

V&V Reference Report

L2 ASCDS Version : 8.4.5

Observation 3898 - L2 Version 3
Chandra X-Ray Center

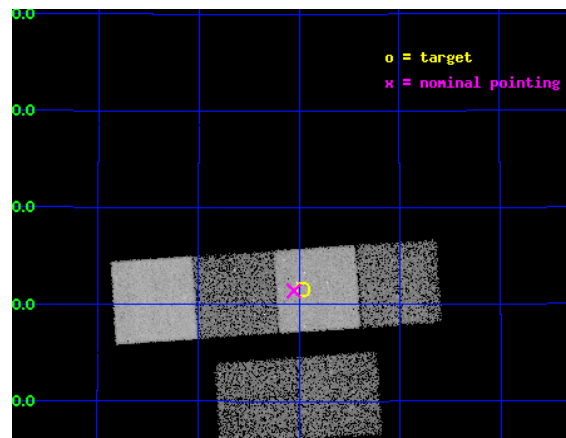
L2 Processing Date : Oct 21 2012

Contents

1	Front	2
2	OBI	3
2.1	OBI	3
2.1.1	Images	3
2.1.2	Bias	3
2.1.3	Parameters	4
2.1.4	Events	4
2.2	Compared Parameters	5
2.3	Aspect	6
2.4	Star Slots	9
2.4.1	Slot 3	9
2.4.2	Slot 4	10
2.4.3	Slot 5	11
2.4.4	Slot 6	12
2.4.5	Slot 7	13
2.5	FID Slots	14
2.5.1	Slot 0	14
2.5.2	Slot 1	15
2.5.3	Slot 2	16
A	Summary	17
A.1	Status	17
A.2	Comments	17

1 Front

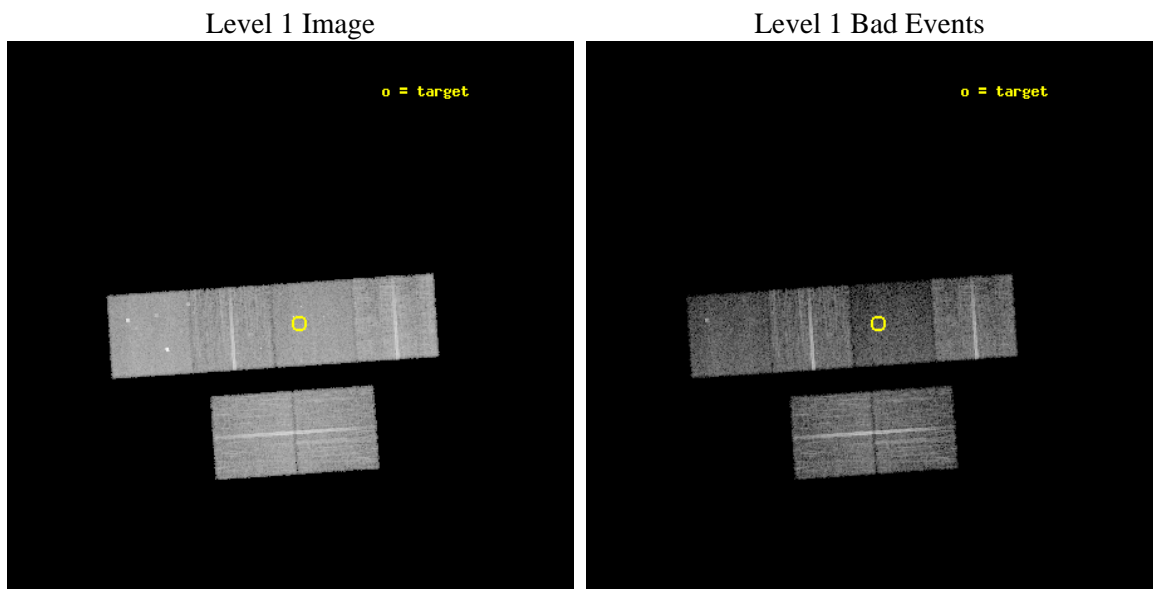
seq_num	500377	Sequence number
obs_id	3898	Observation id
title	EXPLORING THE ZOO OF NEUTRON STARS: HUNTING CGPS SNRS WITH CHANDRA	
observer	Prof. Samar Safi-Harb	Principal investigator
object	G85.4+0.7	Source name
dtcycle	0	
cycle	P	events from which exps? Prim/Second/Both
ra_targ	312.741667	Observer's specified target RA [deg]
dec_targ	45.359722	Observer's specified target Dec [deg]
ra_nom	312.76279167618	Nominal RA [deg]
dec_nom	45.357017792944	Nominal Dec [deg]
roll_nom	356.1502556958	Nominal Roll [deg]
revision	3	Processing version of data
ontime	14460.278499037	Sum of GTIs [s]
livetime	14277.173745748	Livetime [s]
ontime2	14460.31953904	Sum of GTIs [s]
ontime3	14456.914418787	Sum of GTIs [s]
ontime5	14460.237459034	Sum of GTIs [s]
ontime6	14456.955478698	Sum of GTIs [s]
ontime7	14460.278499037	Sum of GTIs [s]
ontime8	14453.63240853	Sum of GTIs [s]
l2events	98008	Number of level 2 events



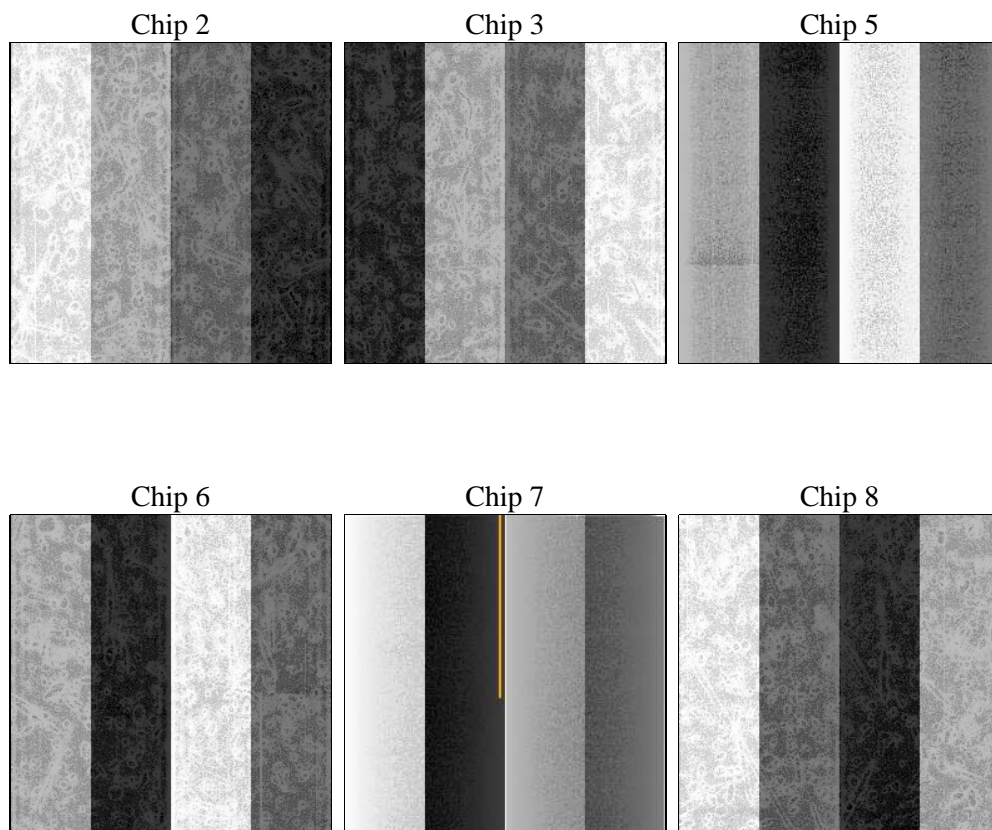
2 OBI

2.1 OBI

2.1.1 Images



2.1.2 Bias



2.1.3 Parameters

obi_num	0	Obi number	sched_exp_time	14500.000000	[s] Scheduled observation exposure time
ascdsver	8.4.5	Processing system revision	ontime	14460.278499037	Sum of GTIs [s]
caldsver	4.5.2	 	ontime2	14460.31953904	Sum of GTIs [s]
date	2012-10-21T05:35:31	Date and time of file creation	ontime3	14456.914418787	Sum of GTIs [s]
revision	3	Processing version of data	ontime5	14460.237459034	Sum of GTIs [s]
			ontime6	14456.955478698	Sum of GTIs [s]
			ontime7	14460.278499037	Sum of GTIs [s]
			ontime8	14453.63240853	Sum of GTIs [s]
			l1events	440010	Number of level 1 events

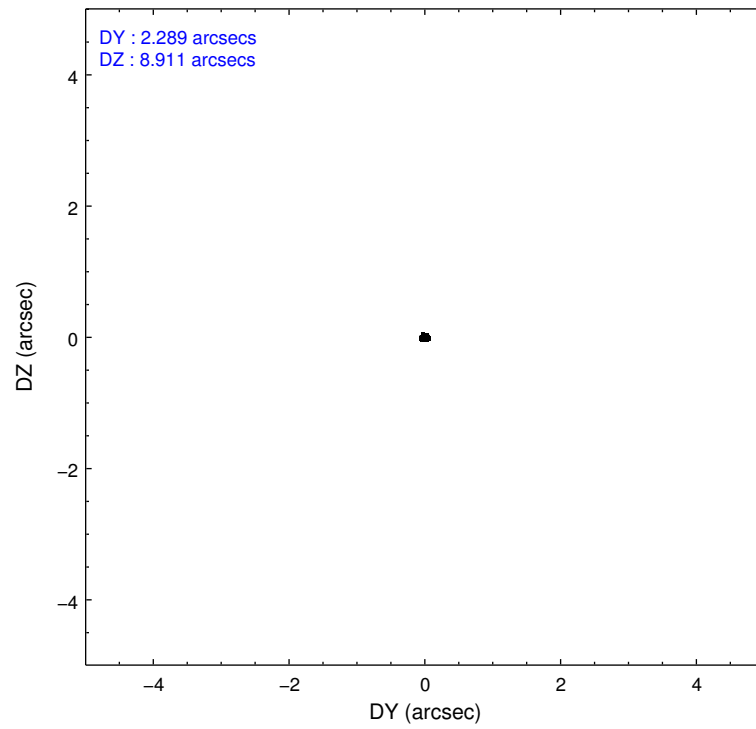
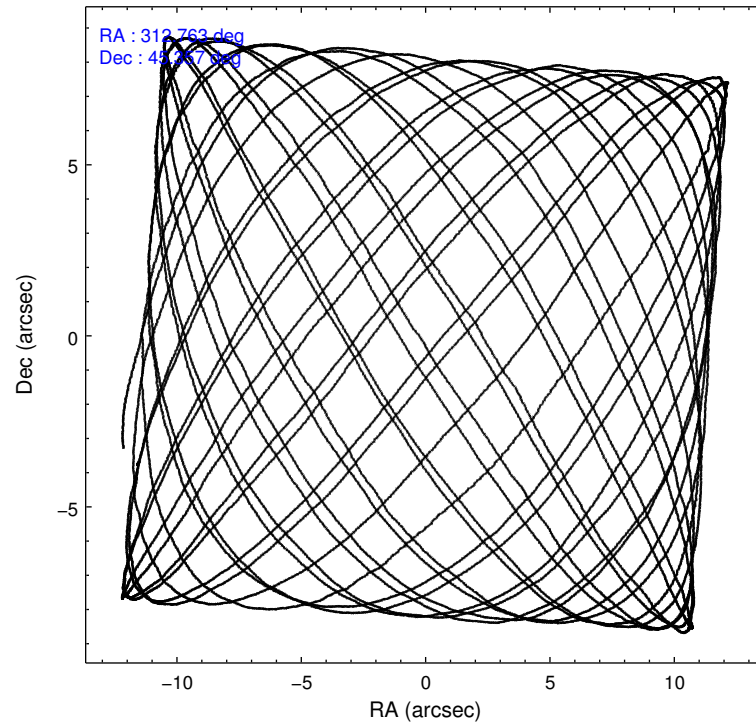
2.1.4 Events

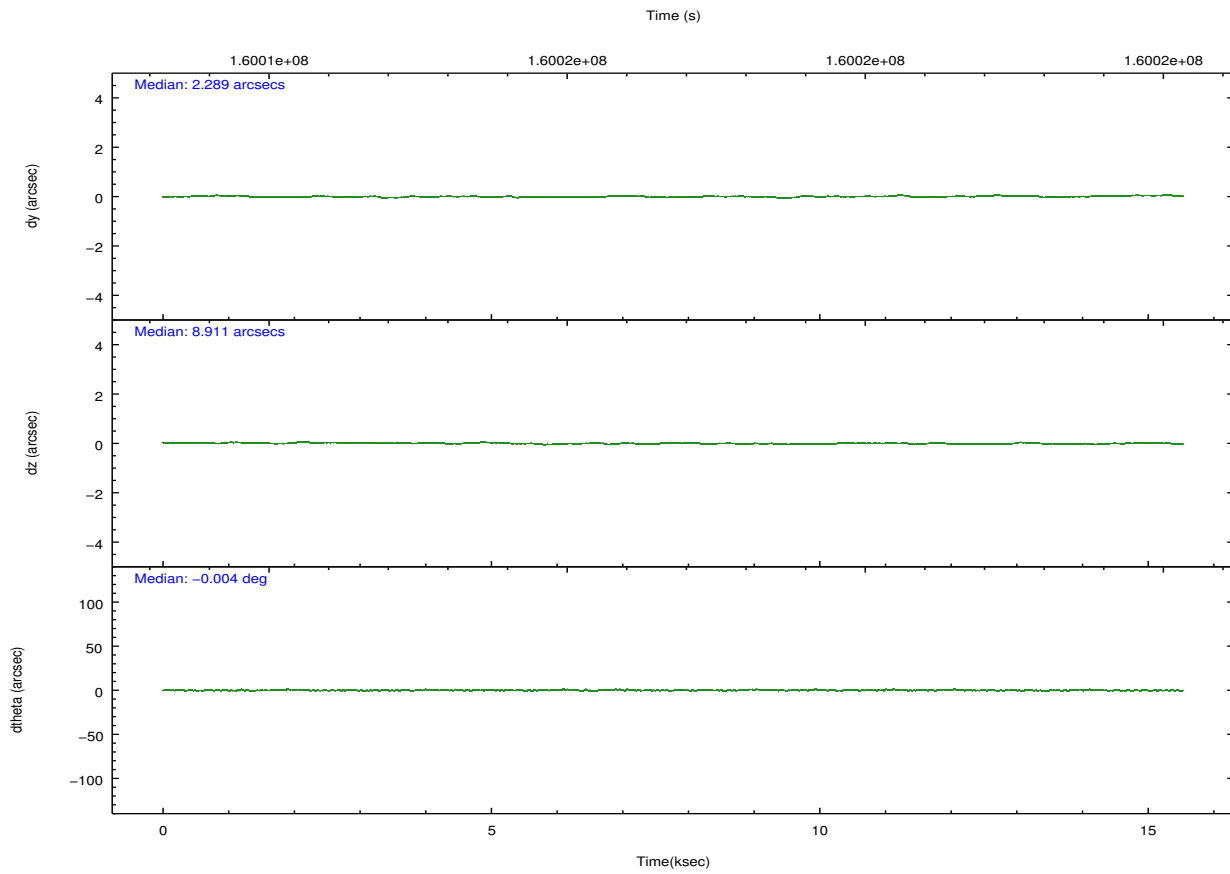
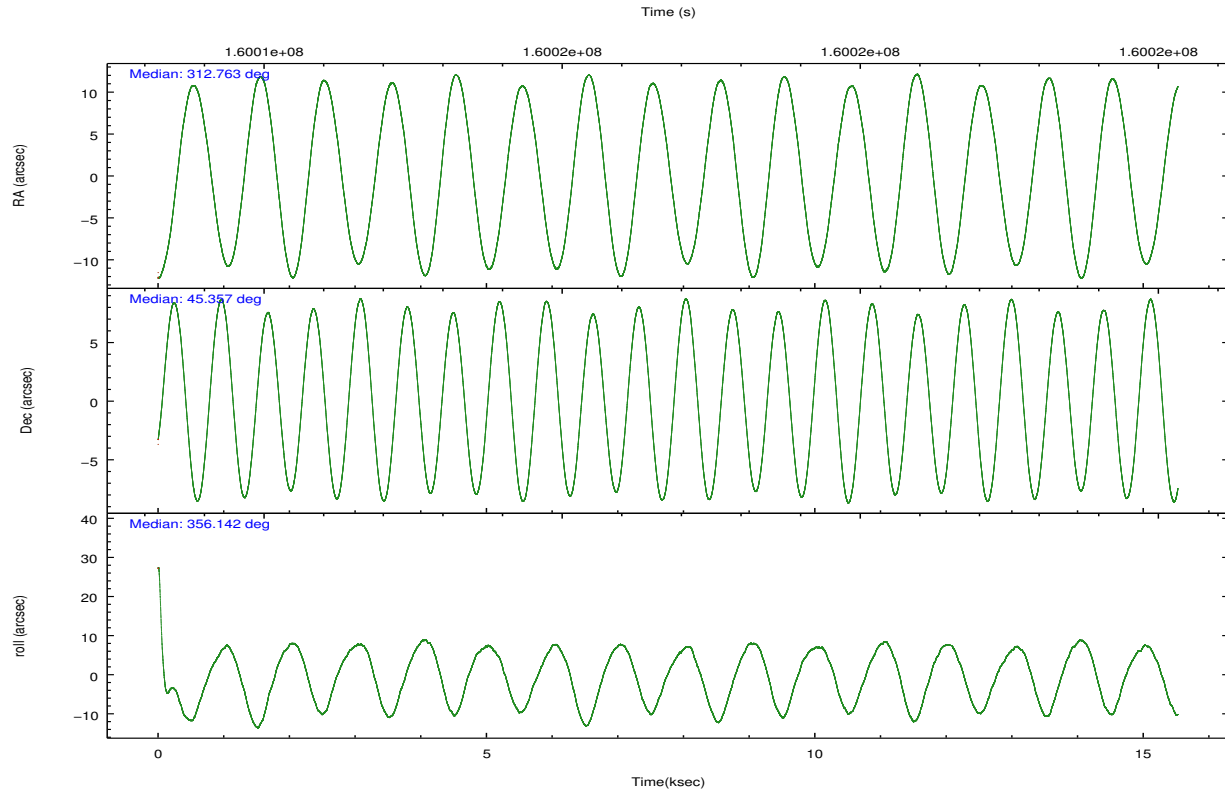
	ccd 2	ccd 3	ccd 5	ccd 6	ccd 7	ccd 8		ccd 2	ccd 3	ccd 5	ccd 6	ccd 7	ccd 8
level 1 events	72777	65661	83957	68899	64868	83848	grade 0 events	2781	2672	6452	3490	3917	5764
rejected events	65712	59074	38715	60970	31360	64727		3%	4%	7%	5%	6%	6%
rejected %	90%	89%	46%	88%	48%	77%	grade 1 events	43	29	87	40	65	50
								0%	0%	0%	0%	0%	0%
							grade 2 events	1537	1345	13164	1550	7129	4369
								2%	2%	15%	2%	10%	5%
							grade 3 events	769	762	2233	792	3430	2008
								1%	1%	2%	1%	5%	2%
							grade 4 events	790	672	2126	780	3399	1901
								1%	1%	2%	1%	5%	2%
							grade 5 events	1921	2116	6948	2248	6855	3427
								2%	3%	8%	3%	10%	4%
							grade 6 events	1189	1137	21280	1319	15639	5087
								1%	1%	25%	1%	24%	6%
							grade 7 events	63747	56928	31667	58680	24434	61242
								87%	86%	37%	85%	37%	73%

2.2 Compared Parameters

Parameter	Planned	Actual	Parameter	Planned	Actual
Instrument	ACIS	ACIS	Obspar format version number	7	7
Detector	ACIS-235678	ACIS-235678	Obspar file type	PREDICTED	ACTUAL
Grating	NONE	NONE	Obspar update status	NONE	UPDATED
Data mode	VFAINT	VFAINT	Number of optional ACIS chips dropped	0	0
Observation mode	POINTING	POINTING	On-chip summing requested	N	N
[deg] Pointing RA	312.728291	312.7627916761803	Subarray requested	NONE	NONE
[deg] Pointing Dec	45.344670	45.35701779294368	Alternating exposures requested	N	N
[deg] Pointing Roll	356.018147	356.1502556958044	[s] Primary exposure time	0.000000	3.2
[mm] SIM focus pos	-0.684267	-0.6828225247311905			
[mm] SIM defocus	0	0.001444936568705701			
[mm] SIM translation stage pos	-190.132523	-190.1400660498719			
[mm] SIM translation stage offset	0	0.00754346686406393			
[s] Observation start time (MET)	160010037.184000	160008655.3861			
Observation start date	2003-01-26T23:12:53	2003-01-26T22:50:55			
[s] Observation end time (MET)	160024537.184000	160025060.51179			
Observation end date	2003-01-27T03:14:33	2003-01-27T03:24:20			
Read mode	TIMED	TIMED			

2.3 Aspect



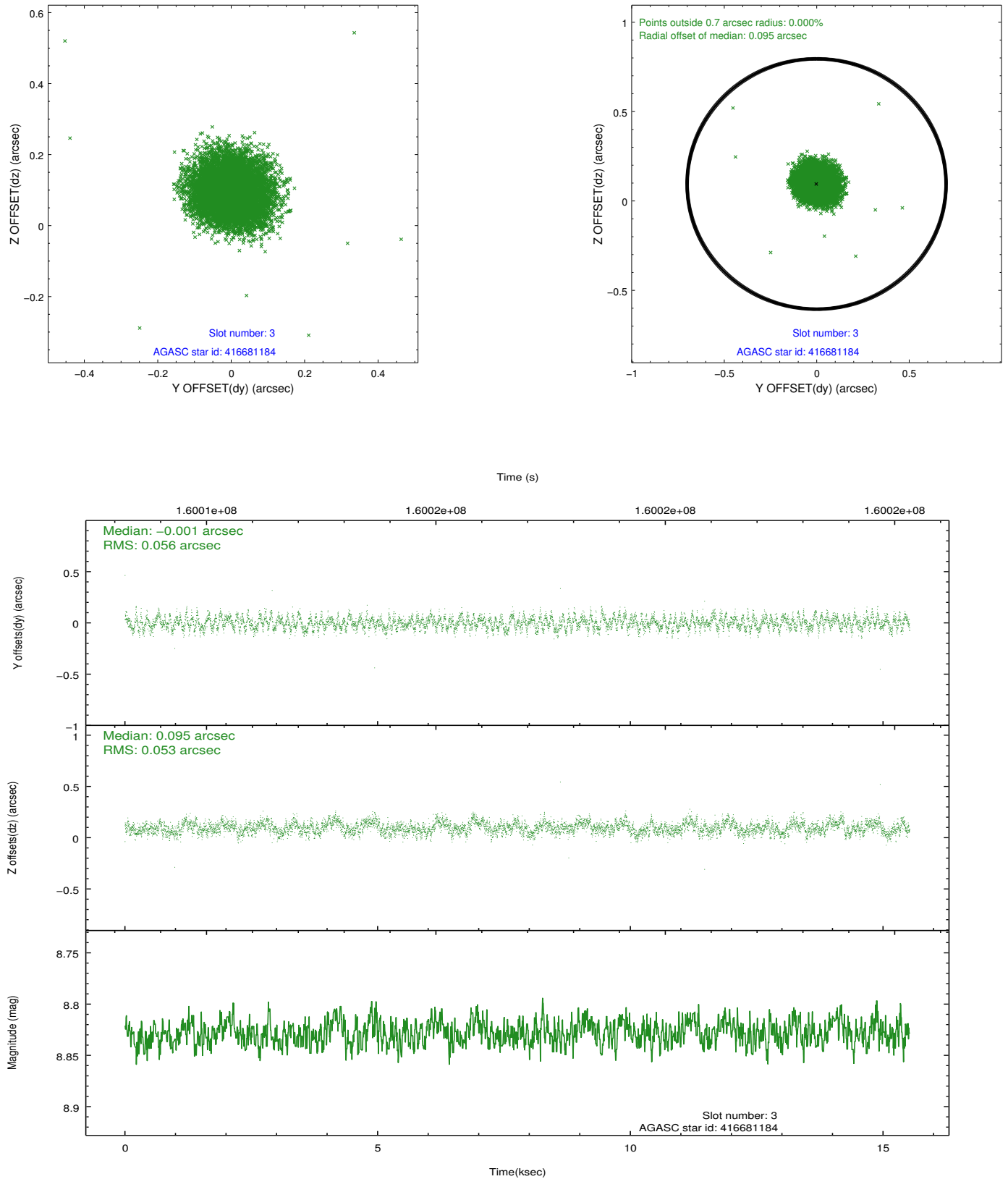


Slot Statistics

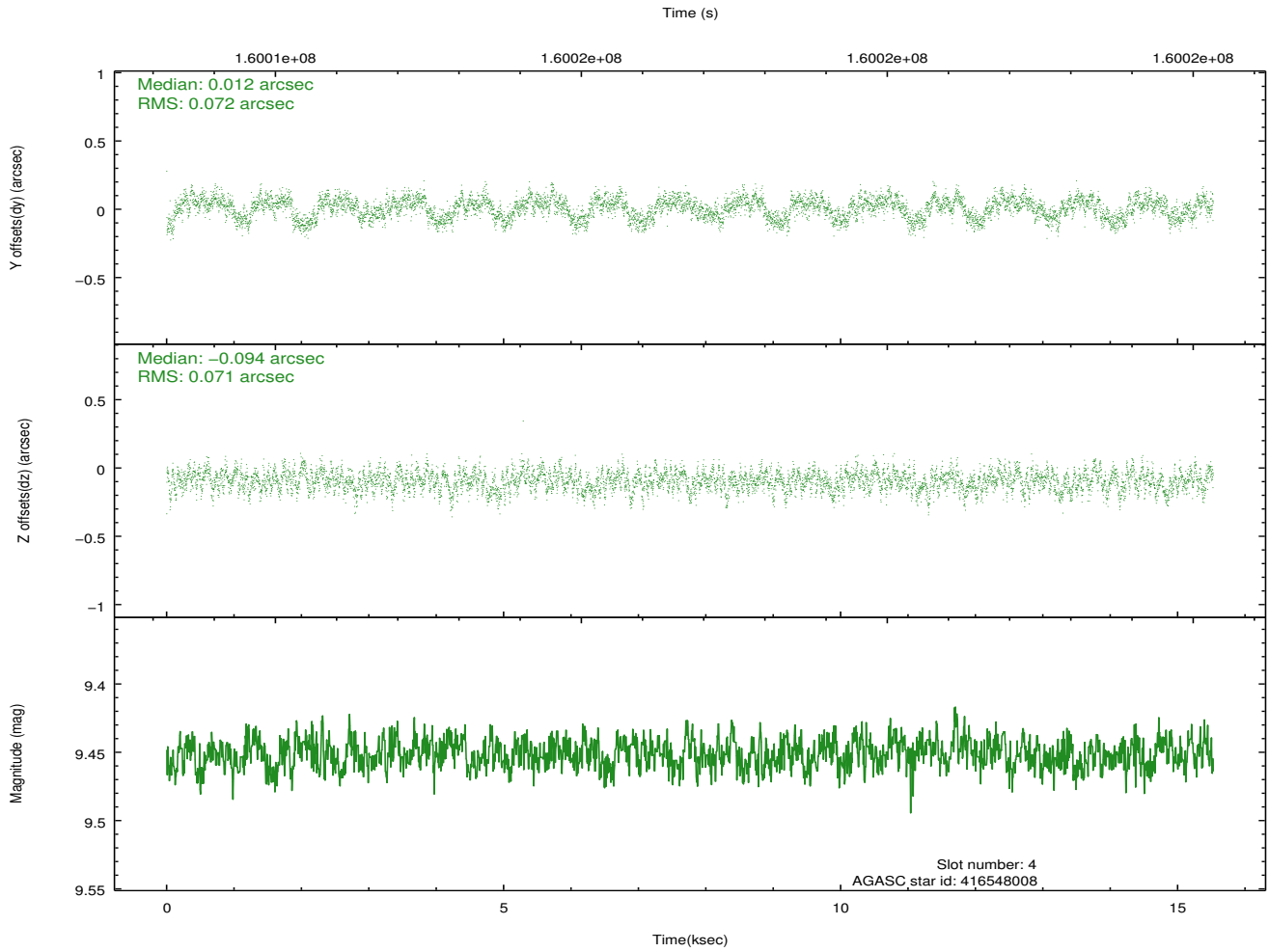
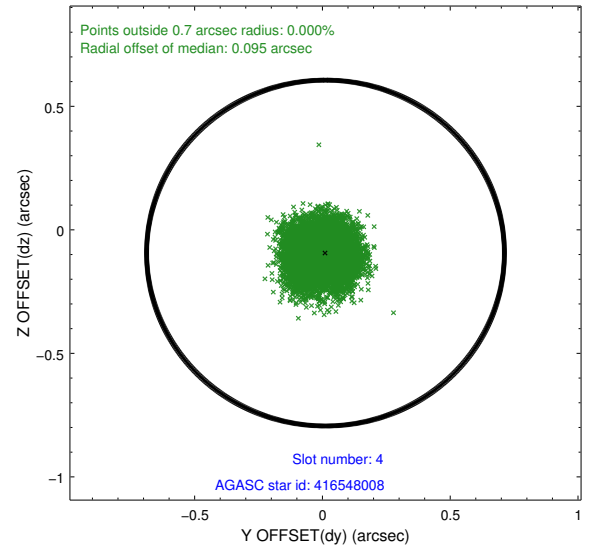
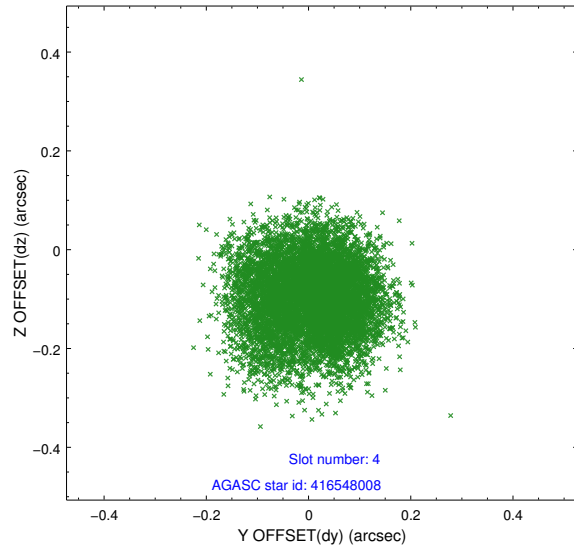
slot	status	id	mag	n_pts	med_dy	med_dz	dr1	dr2	ra	dec	mean_y	mean_z
0	FID	ACIS-S-2	7.10	3787	-0.027	-0.003	0.007	0.011	0.000000	0.000000	-754.93	-1730.13
1	FID	ACIS-S-4	7.20	3786	-0.022	0.014	0.006	0.011	0.000000	0.000000	2158.21	178.08
2	FID	ACIS-S-5	7.24	3786	0.018	-0.001	0.006	0.011	0.000000	0.000000	-1807.37	172.05
3	GUIDE	416681184	8.83	7571	-0.001	0.095	0.082	0.127	313.182612	44.714809	1317.15	-2177.69
4	GUIDE	416548008	9.45	7566	0.012	-0.094	0.110	0.171	311.932961	44.866575	-1905.02	-1848.50
5	GUIDE	416547880	9.39	7567	-0.114	-0.025	0.103	0.157	312.003203	44.699637	-1690.25	-2437.50
6	GUIDE	468620728	9.86	7570	-0.021	0.014	0.106	0.172	312.272299	45.763465	-1247.74	1427.40
7	GUIDE	468585016	9.58	7564	0.128	0.012	0.088	0.146	313.504874	45.555122	1899.53	901.82

2.4 Star Slots

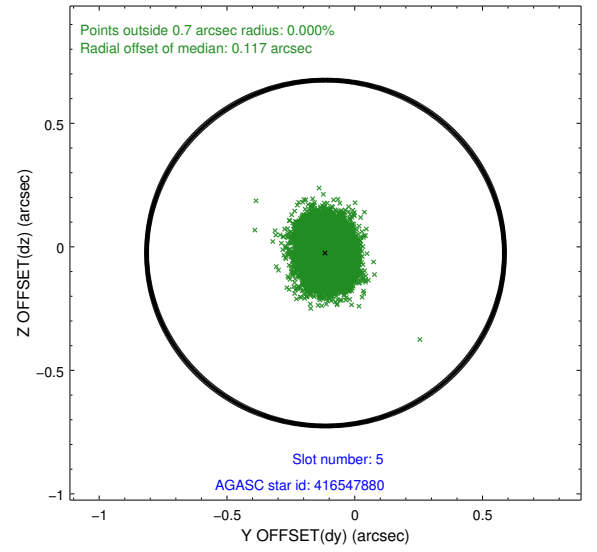
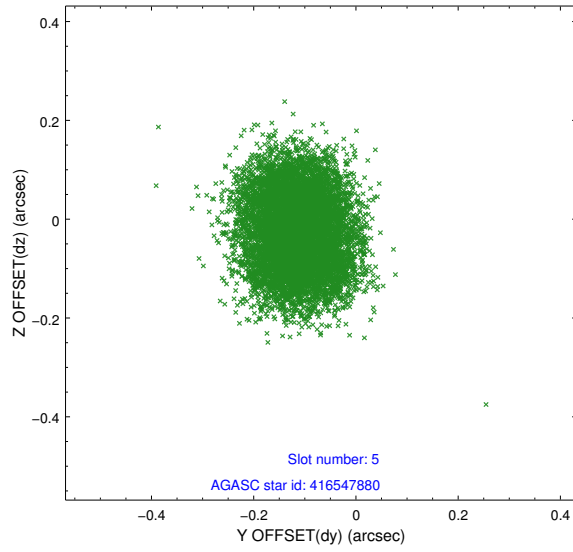
2.4.1 Slot 3



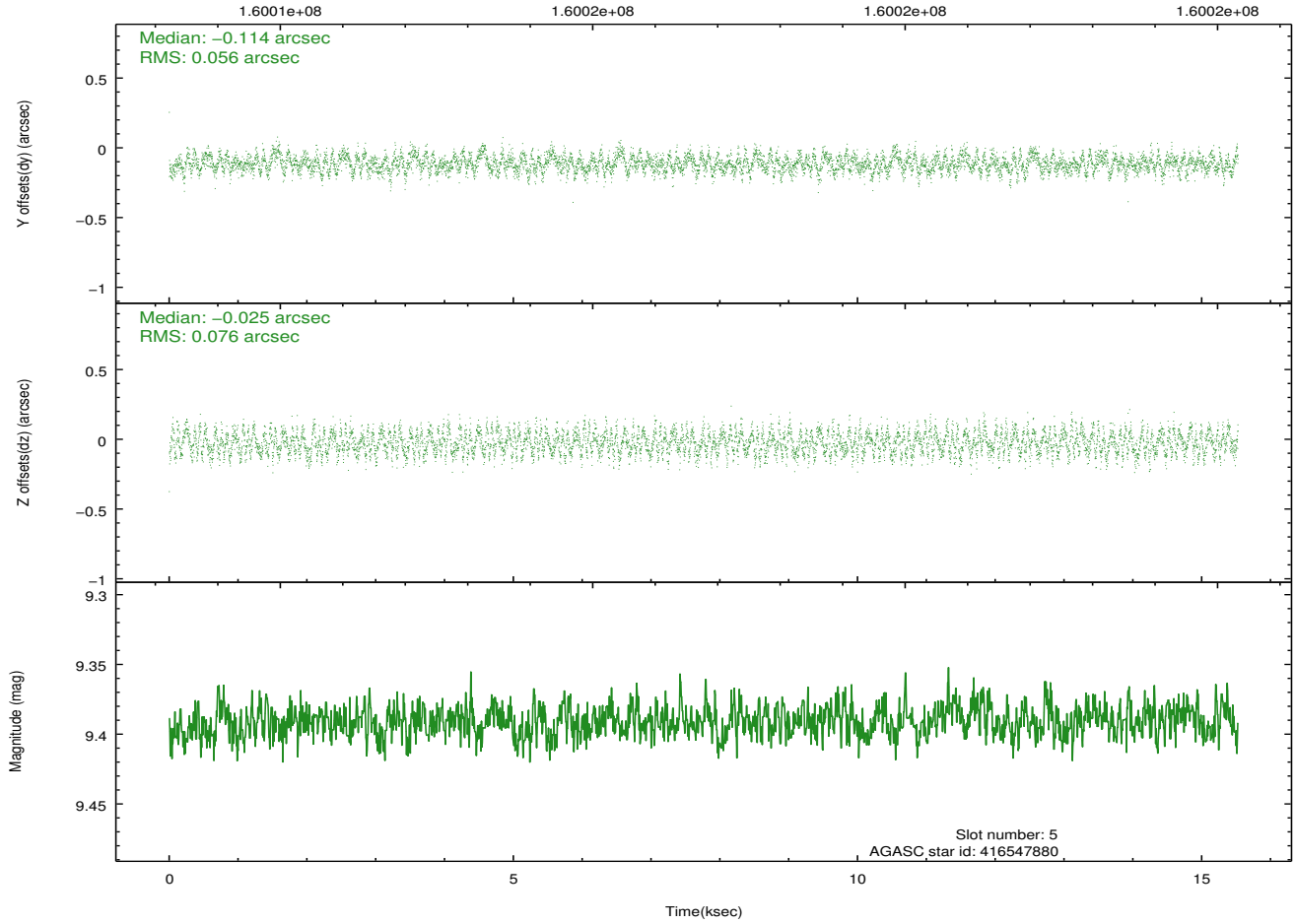
2.4.2 Slot 4



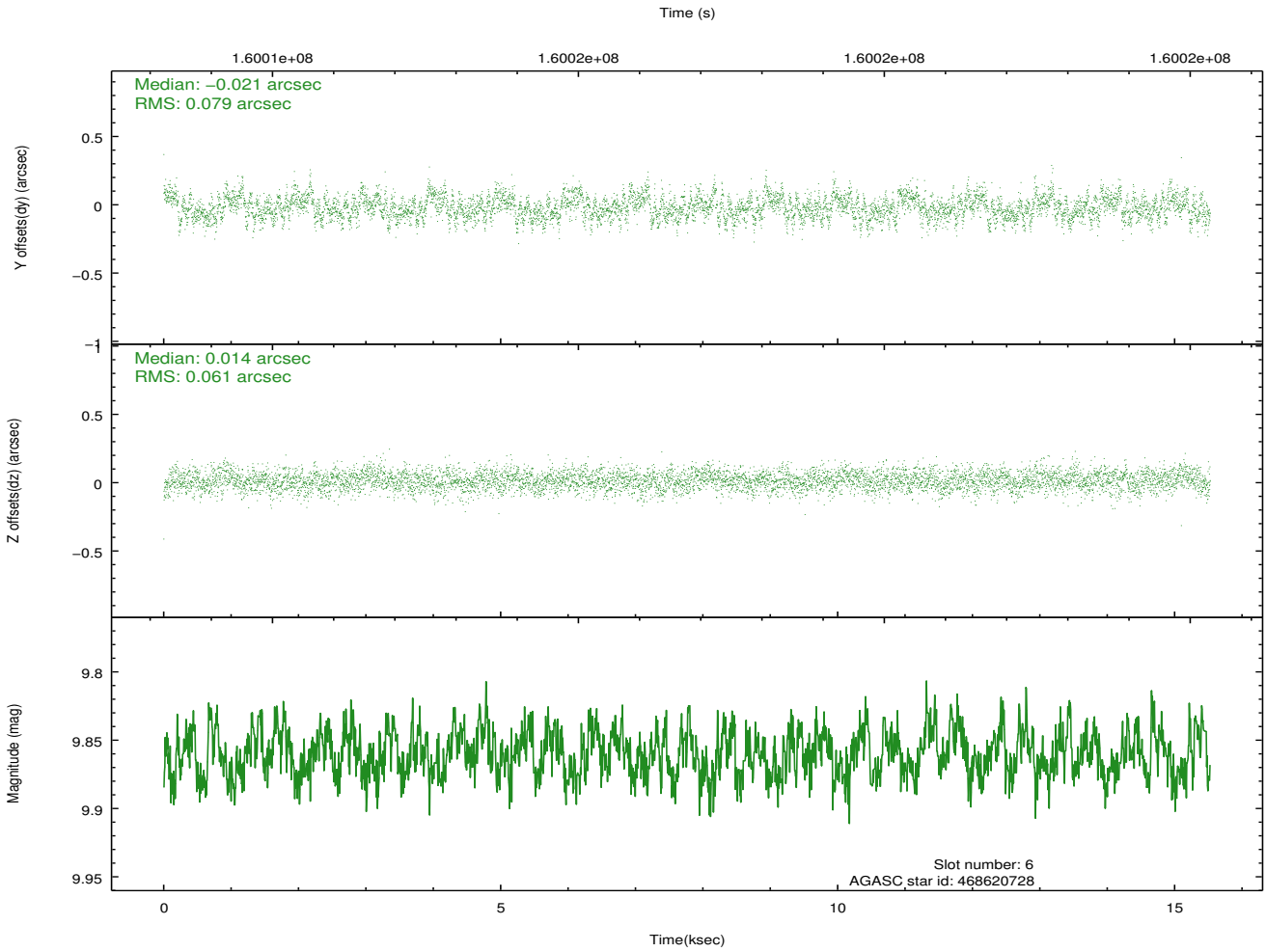
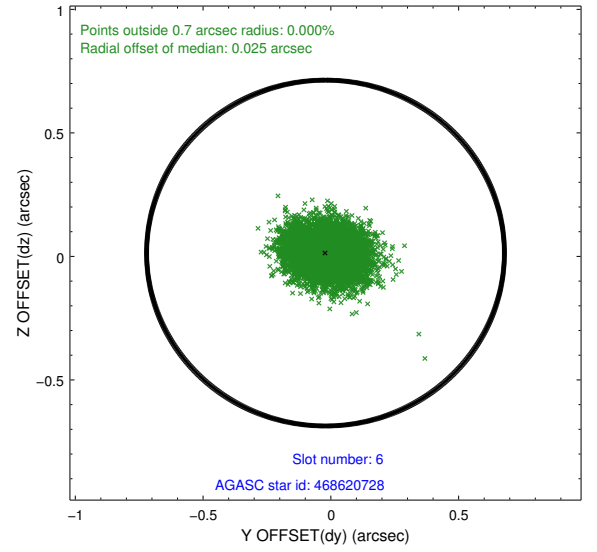
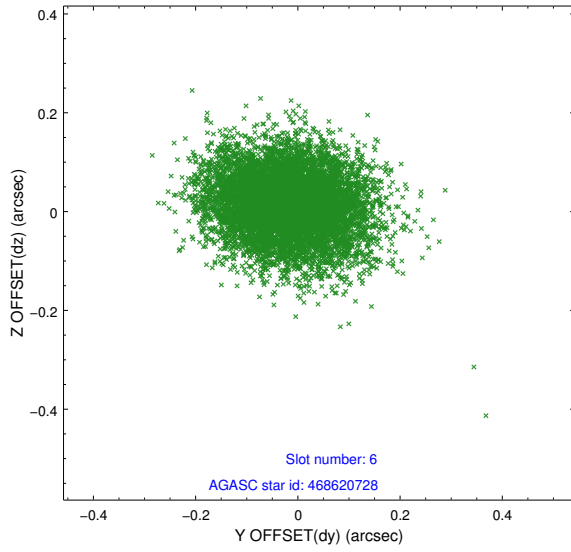
2.4.3 Slot 5



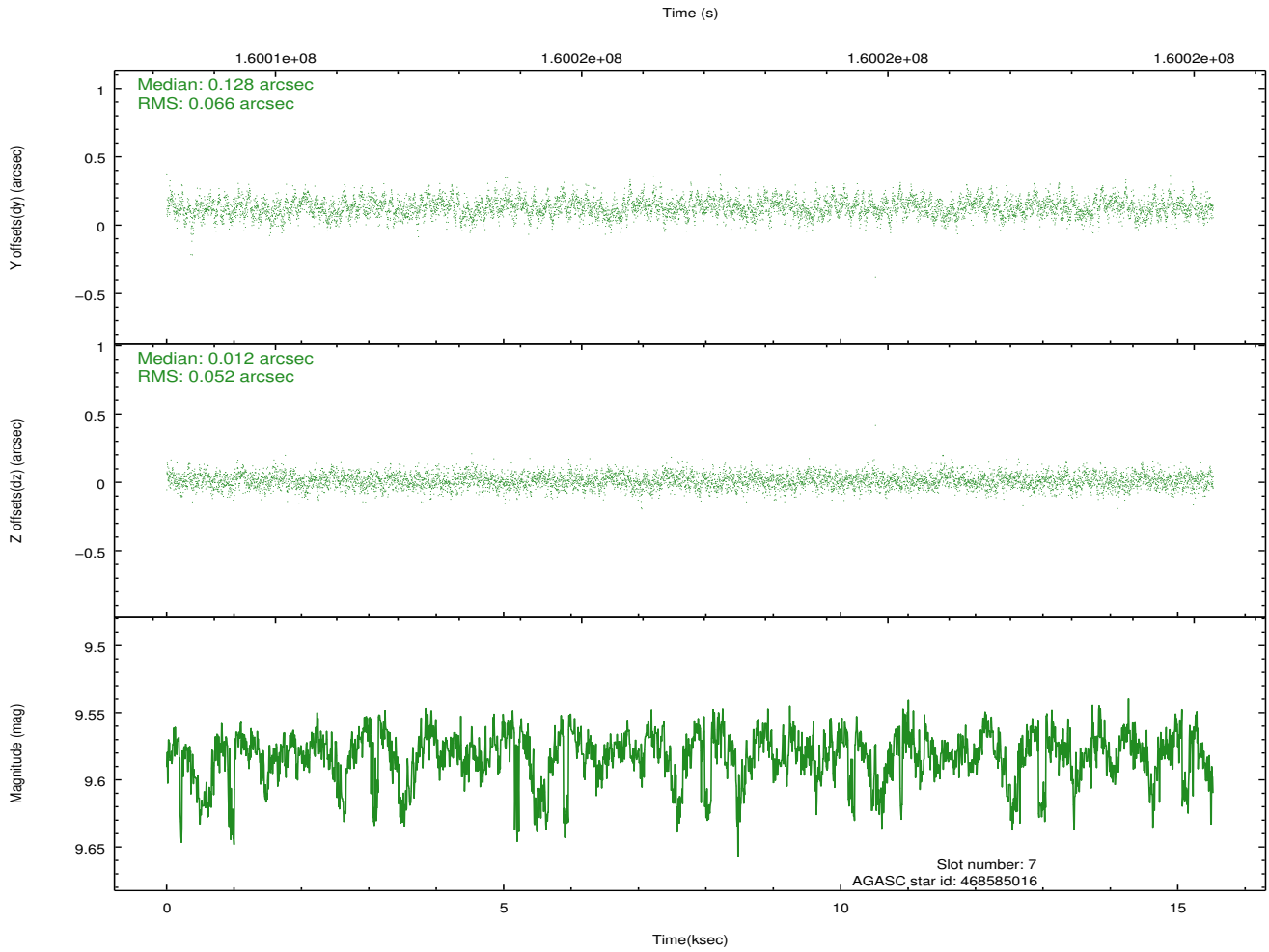
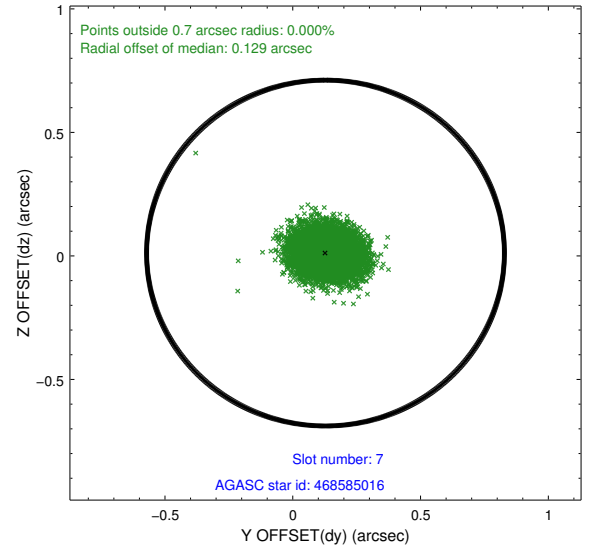
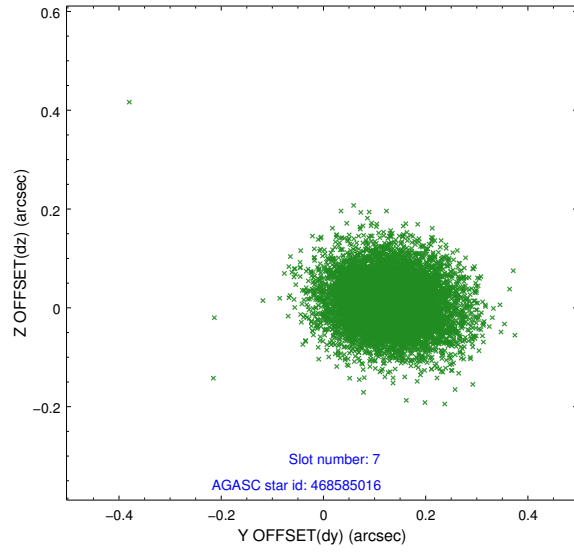
Time (s)



2.4.4 Slot 6

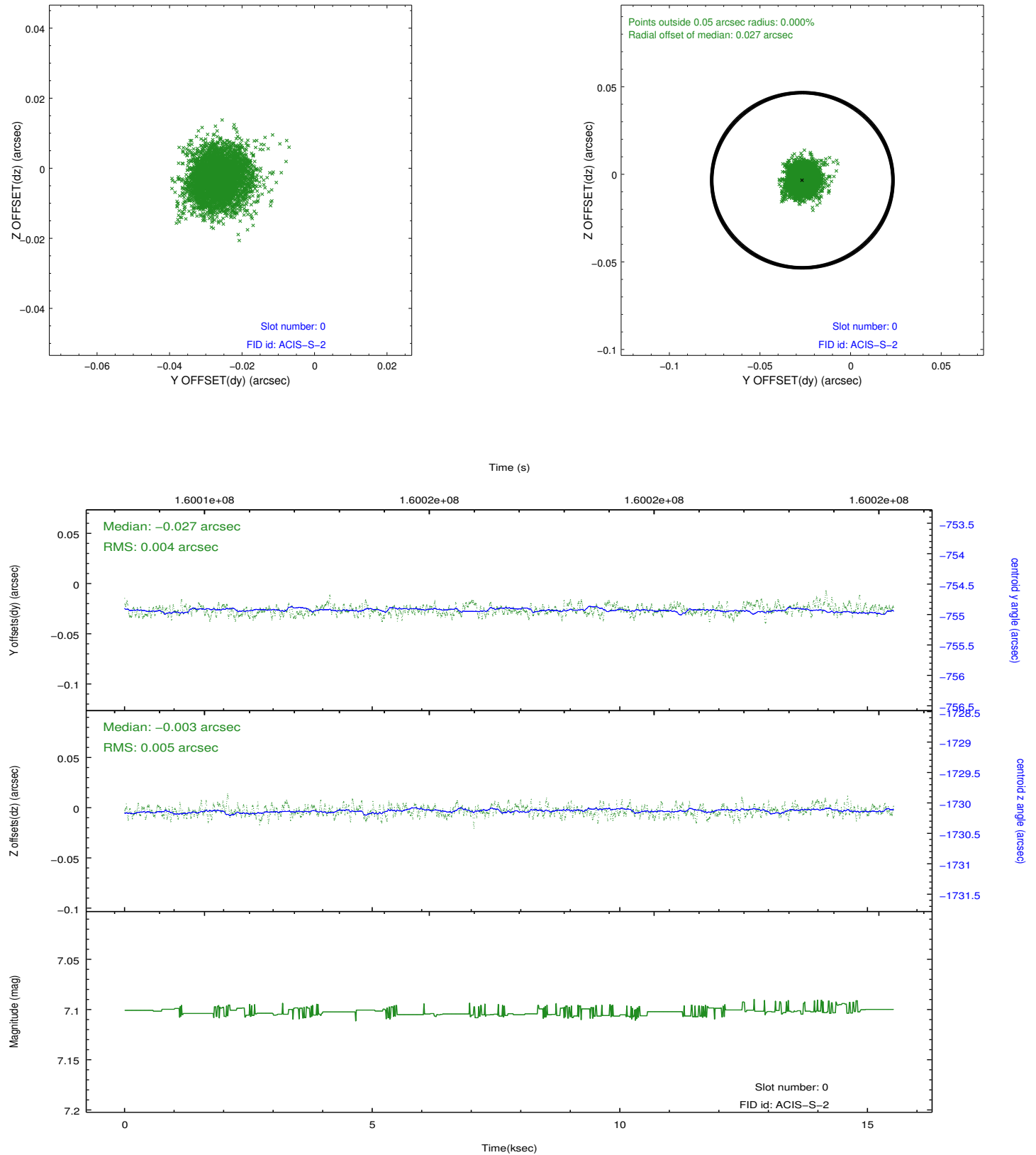


2.4.5 Slot 7

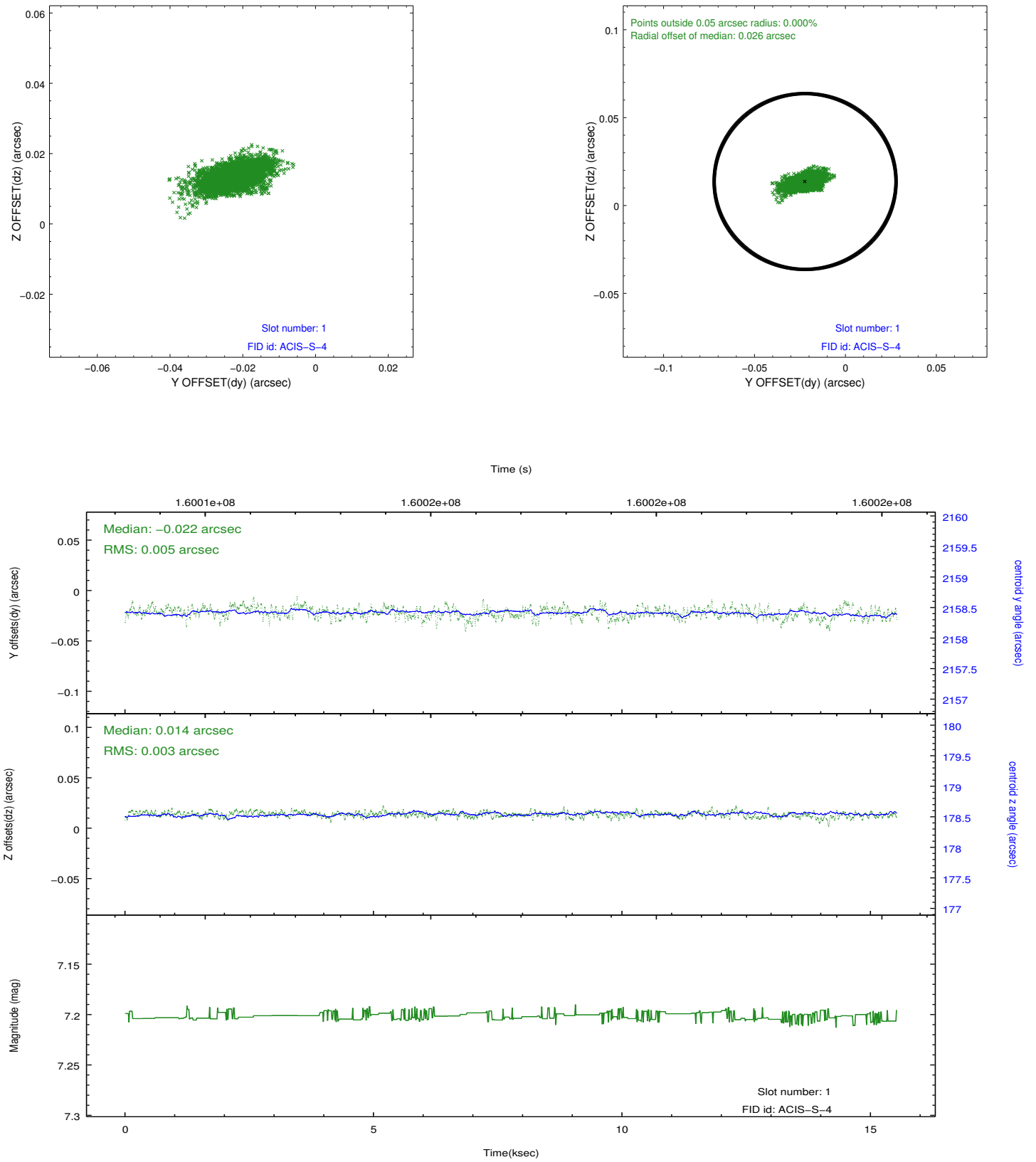


2.5 FID Slots

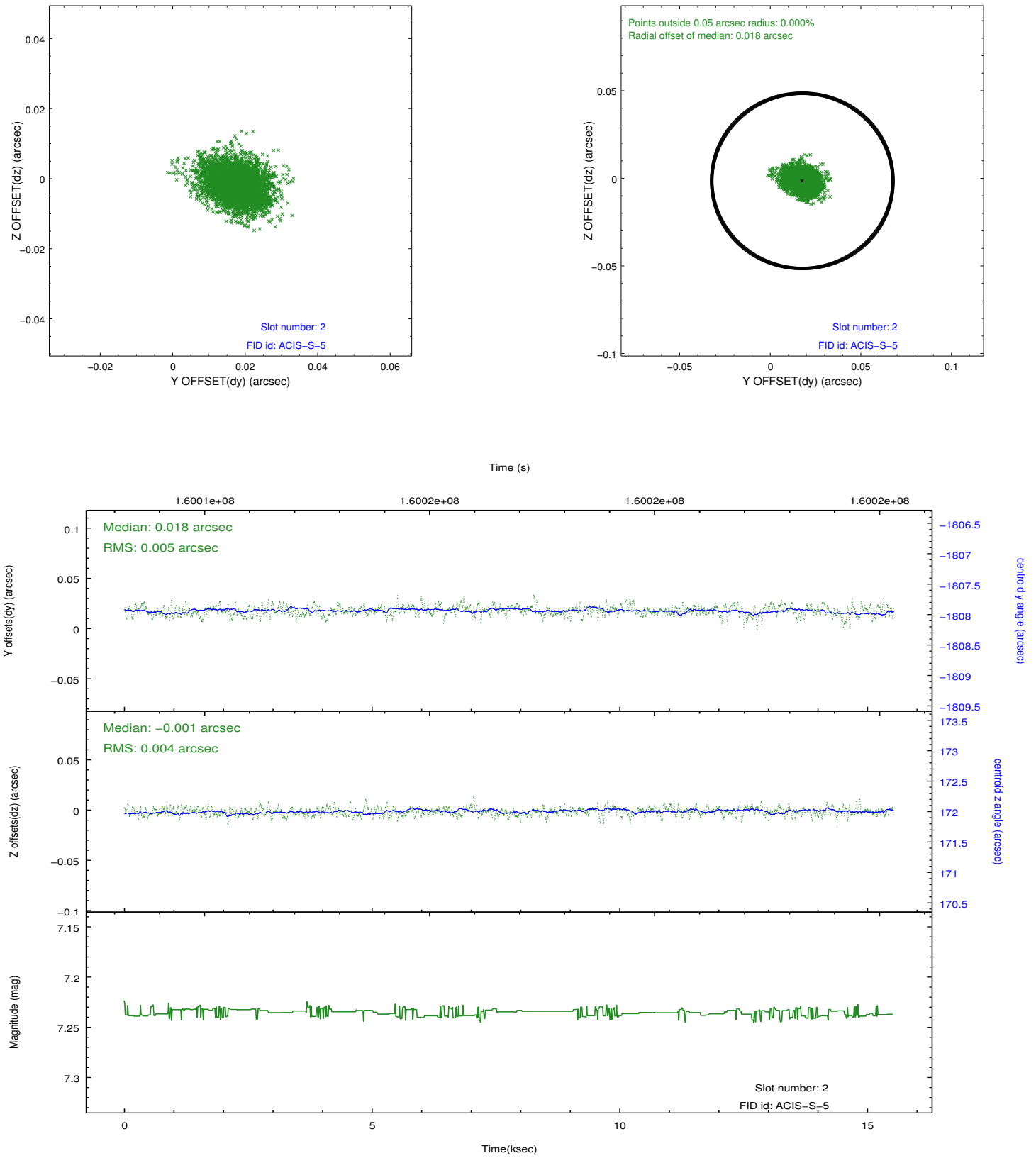
2.5.1 Slot 0



2.5.2 Slot 1



2.5.3 Slot 2



A Summary

A.1 Status

V&V Scientist	Jen Lauer
V&V Date (YYYY-MM-DD)	2012.11.01
V&V Edition	1
V&V Disposition and Status	OK
V&V Charge Time	14.46

A.2 Comments

Roll preference not met.