

V&V Reference Report

L2 ASCDS Version : 8.4.5

Observation 3897 - L2 Version 3
Chandra X-Ray Center

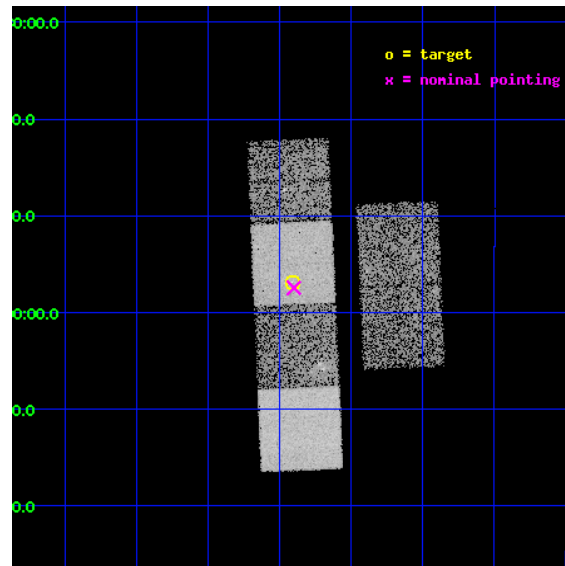
L2 Processing Date : Nov 3 2012

Contents

1	Front	2
2	OBI	3
2.1	OBI	3
2.1.1	Images	3
2.1.2	Bias	3
2.1.3	Parameters	4
2.1.4	Events	4
2.2	Compared Parameters	5
2.3	Aspect	6
2.4	Star Slots	9
2.4.1	Slot 3	9
2.4.2	Slot 4	10
2.4.3	Slot 5	11
2.4.4	Slot 6	12
2.4.5	Slot 7	13
2.5	FID Slots	14
2.5.1	Slot 0	14
2.5.2	Slot 1	15
2.5.3	Slot 2	16
A	Summary	17
A.1	Status	17
A.2	Comments	17

1 Front

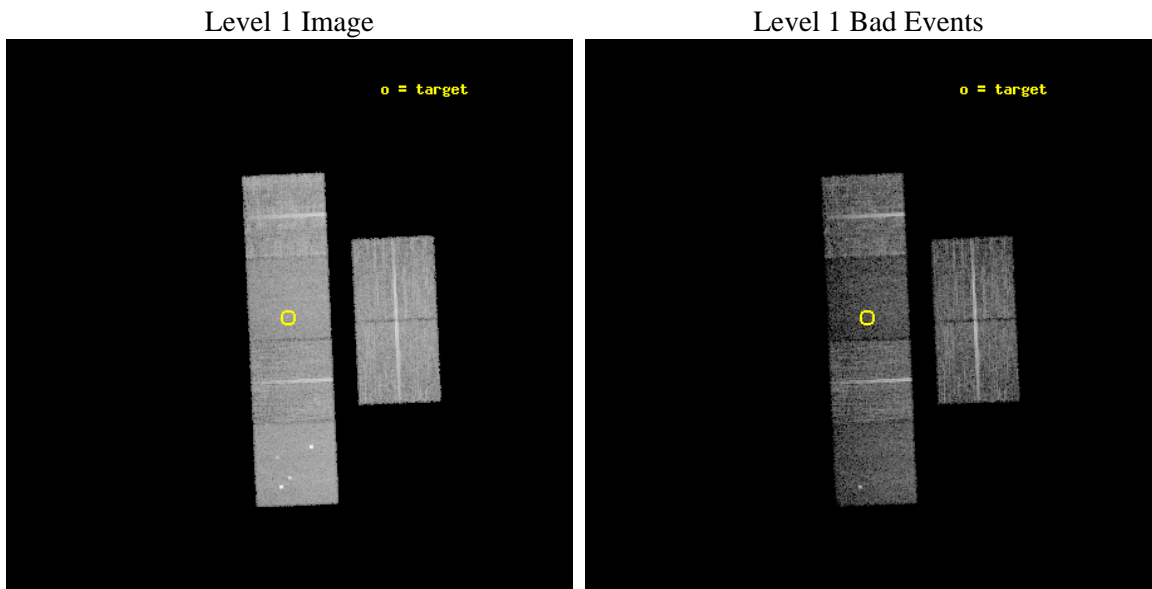
seq_num	500376	Sequence number
obs_id	3897	Observation id
title	IS AX J1845-0258 AN ANOMALOUS X-RAY PULSAR?	Proposal title
observer	Dr. Victoria Kaspi	Principal investigator
object	AX J1845-0258	Source name
dtcycle	0	
cycle	P	events from which exps? Prim/Second/Both
ra_targ	281.2275	Observer's specified target RA [deg]
dec_targ	-2.948056	Observer's specified target Dec [deg]
ra_nom	281.22538811774	Nominal RA [deg]
dec_nom	-2.9575266731988	Nominal Dec [deg]
roll_nom	267.46331322619	Nominal Roll [deg]
revision	3	Processing version of data
ontime	11926.399955571	Sum of GTIs [s]
livetime	11775.380698117	Livetime [s]
ontime2	11926.399955571	Sum of GTIs [s]
ontime3	11926.399955571	Sum of GTIs [s]
ontime5	11926.399955571	Sum of GTIs [s]
ontime6	11926.399955571	Sum of GTIs [s]
ontime7	11926.399955571	Sum of GTIs [s]
ontime8	11926.399955571	Sum of GTIs [s]
l2events	83560	Number of level 2 events



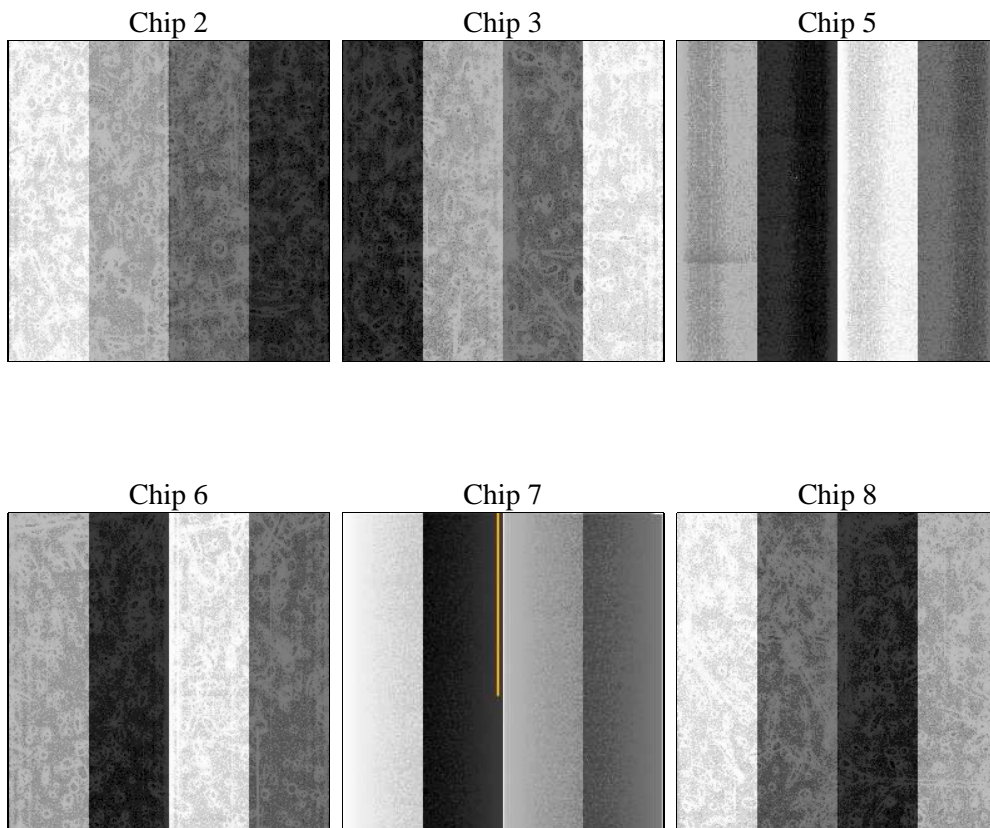
2 OBI

2.1 OBI

2.1.1 Images



2.1.2 Bias



2.1.3 Parameters

obi_num	0	Obi number	sched_exp_time	12000.000000	[s] Scheduled observation exposure time
ascdsver	8.4.5	Processing system revision	ontime	11926.399955571	Sum of GTIs [s]
caldbver	4.5.2	 	ontime2	11926.399955571	Sum of GTIs [s]
date	2012-11-03T19:36:37	Date and time of file creation	ontime3	11926.399955571	Sum of GTIs [s]
revision	3	Processing version of data	ontime5	11926.399955571	Sum of GTIs [s]
			ontime6	11926.399955571	Sum of GTIs [s]
			ontime7	11926.399955571	Sum of GTIs [s]
			ontime8	11926.399955571	Sum of GTIs [s]
			l1events	375623	Number of level 1 events

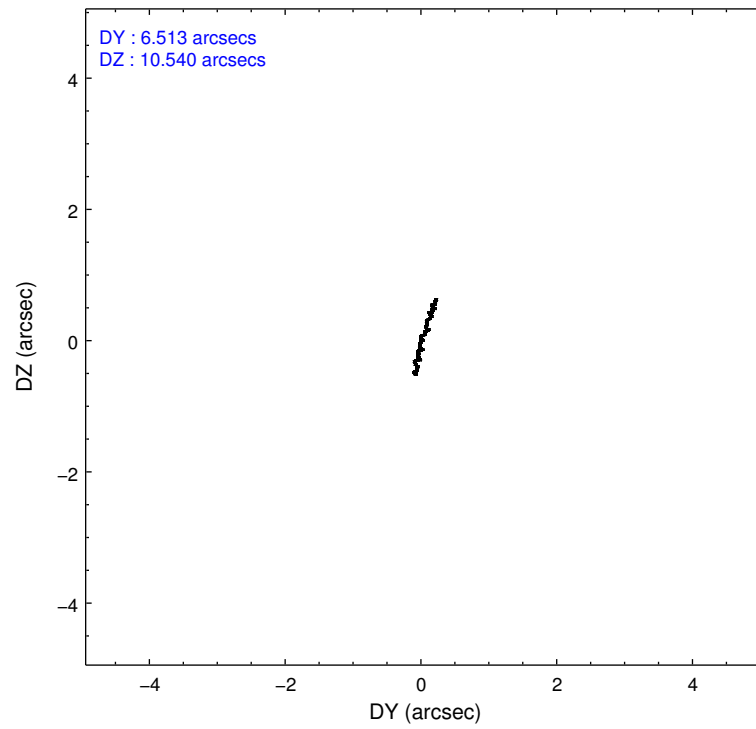
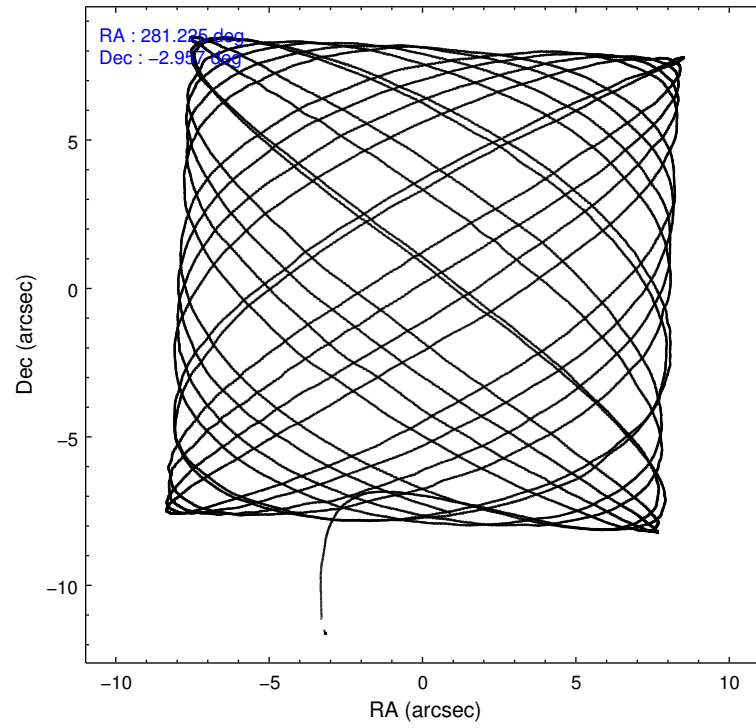
2.1.4 Events

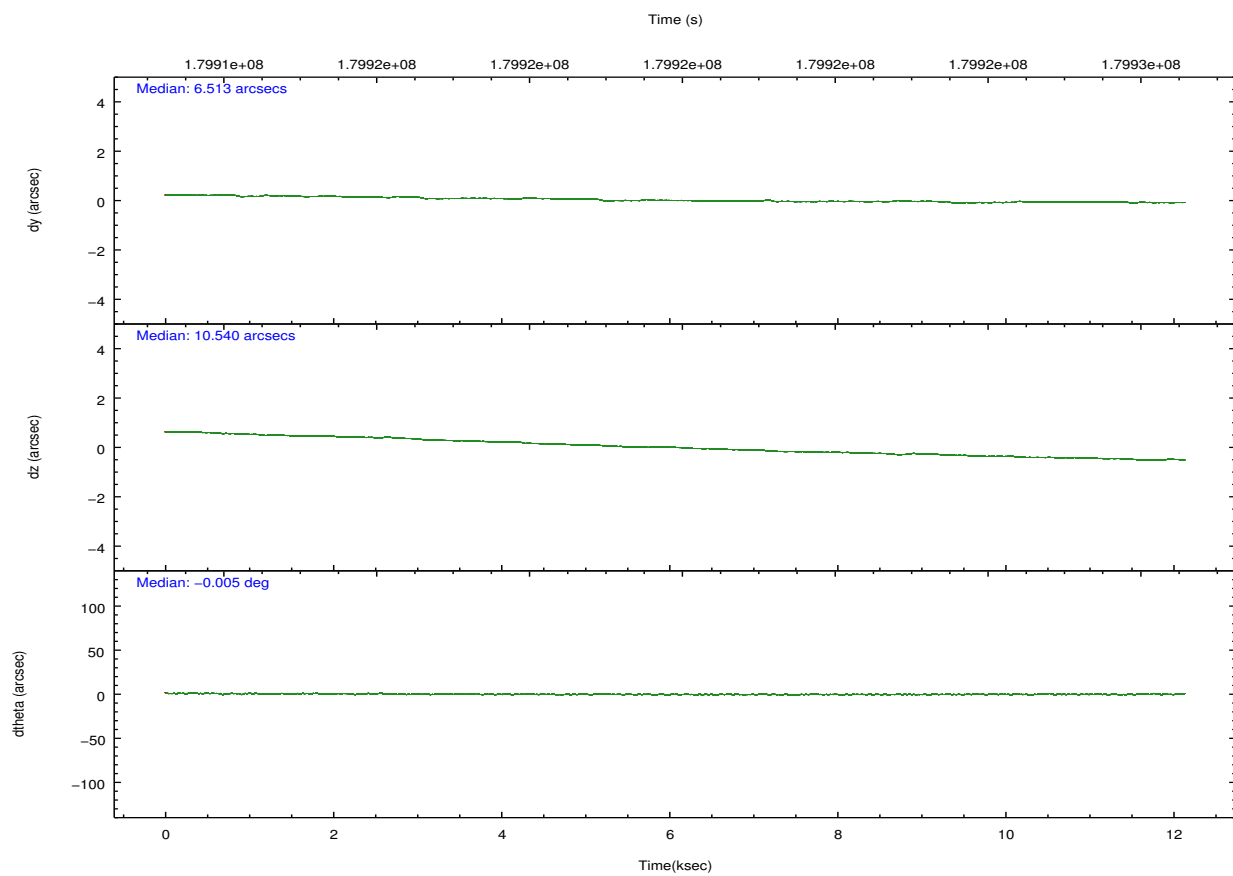
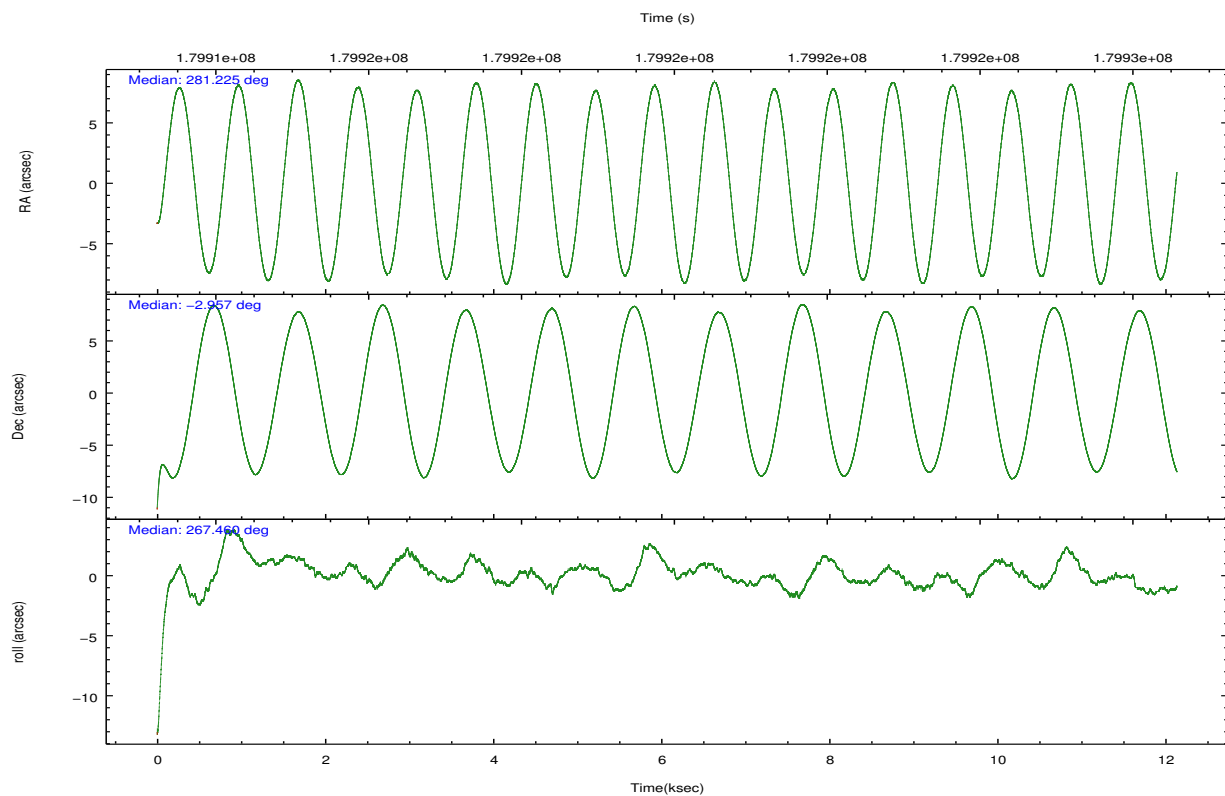
	ccd 2	ccd 3	ccd 5	ccd 6	ccd 7	ccd 8		ccd 2	ccd 3	ccd 5	ccd 6	ccd 7	ccd 8
level 1 events	60844	57424	73638	58448	54823	70446	grade 0 events	2438	2378	6257	2992	2772	4900
rejected events	54762	51585	33503	51255	27295	54037		4%	4%	8%	5%	5%	6%
rejected %	90%	89%	45%	87%	49%	76%	grade 1 events	41	27	152	25	59	42
								0%	0%	0%	0%	0%	0%
							grade 2 events	1337	1194	11790	1454	5838	3911
								2%	2%	16%	2%	10%	5%
							grade 3 events	676	663	1953	769	2678	1702
								1%	1%	2%	1%	4%	2%
							grade 4 events	651	604	1837	687	2753	1596
								1%	1%	2%	1%	5%	2%
							grade 5 events	1622	1819	6100	2004	5887	2805
								2%	3%	8%	3%	10%	3%
							grade 6 events	984	1005	18320	1296	13502	4306
								1%	1%	24%	2%	24%	6%
							grade 7 events	53095	49734	27229	49221	21334	51184
								87%	86%	36%	84%	38%	72%

2.2 Compared Parameters

Parameter	Planned	Actual	Parameter	Planned	Actual
Instrument	ACIS	ACIS	Obspar format version number	7	7
Detector	ACIS-235678	ACIS-235678	Obspar file type	PREDICTED	ACTUAL
Grating	NONE	NONE	Obspar update status	NONE	UPDATED
Data mode	VFAINT	VFAINT	Number of optional ACIS chips dropped	0	0
Observation mode	POINTING	POINTING	On-chip summing requested	N	N
[deg] Pointing RA	281.212483	281.2253881177425	Subarray requested	NONE	NONE
[deg] Pointing Dec	-2.933500	-2.95752667319875	Alternating exposures requested	N	N
[deg] Pointing Roll	267.306030	267.4633132261907	[s] Primary exposure time	0.000000	3.2
[mm] SIM focus pos	-0.684267	-0.6828225247311905			
[mm] SIM defocus	0	0.001444936568705701			
[mm] SIM translation stage pos	-190.132523	-190.1400660498719			
[mm] SIM translation stage offset	0	0.00754346686406393			
[s] Observation start time (MET)	179913971.184000	179912895.99232			
Observation start date	2003-09-14T08:05:07	2003-09-14T07:48:15			
[s] Observation end time (MET)	179925971.184000	179926895.44292			
Observation end date	2003-09-14T11:25:07	2003-09-14T11:41:35			
Read mode	TIMED	TIMED			

2.3 Aspect



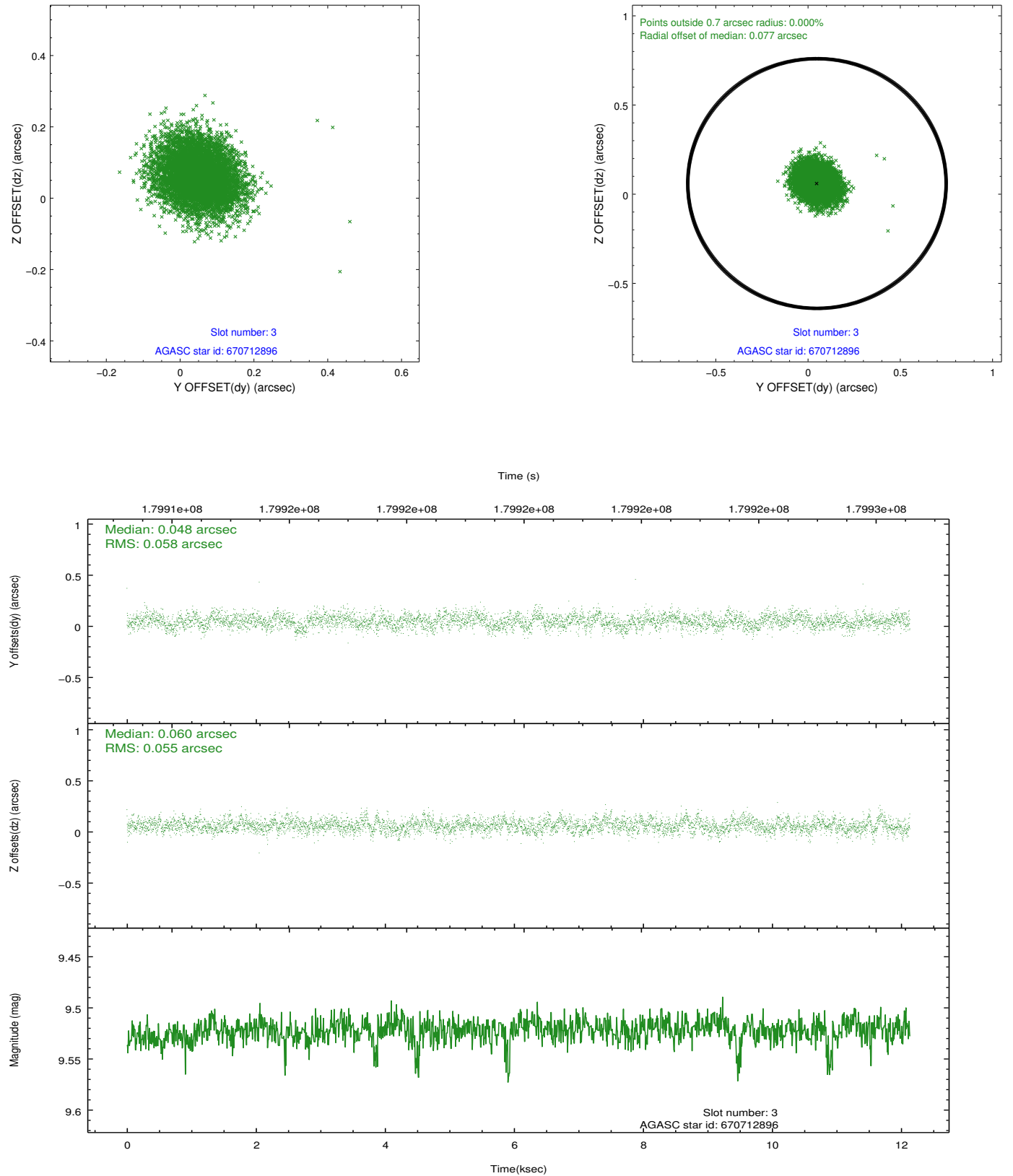


Slot Statistics

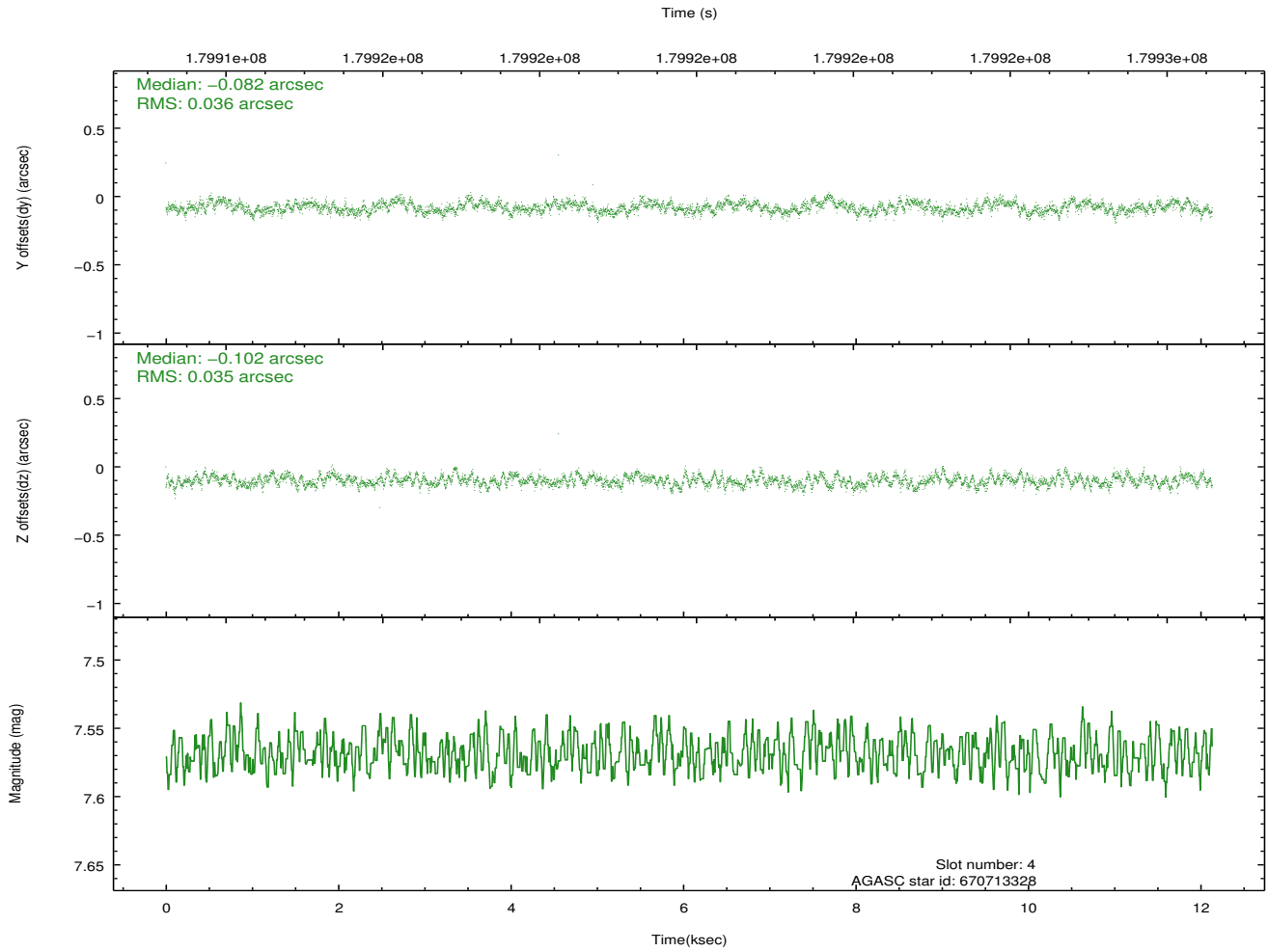
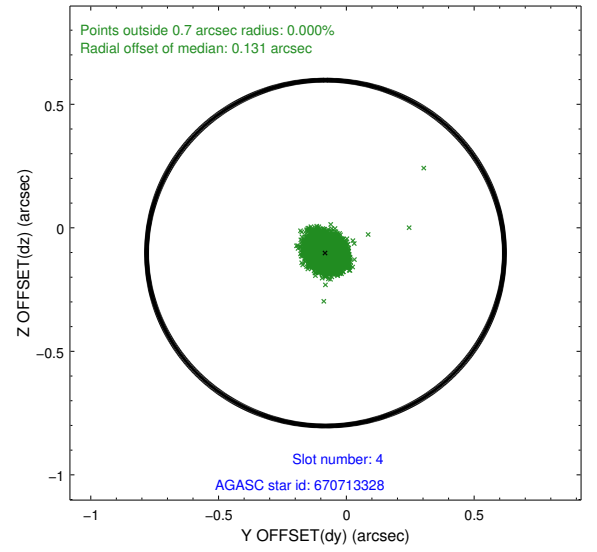
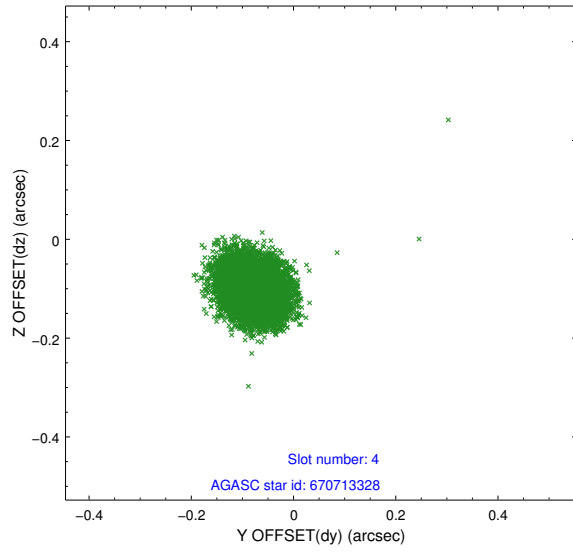
slot	status	id	mag	n_pts	med_dy	med_dz	dr1	dr2	ra	dec	mean_y	mean_z
0	FID	ACIS-S-2	7.10	2961	-0.057	-0.014	0.009	0.014	0.000000	0.000000	-759.32	-1731.84
1	FID	ACIS-S-4	7.20	2961	0.065	0.031	0.007	0.013	0.000000	0.000000	2153.87	176.30
2	FID	ACIS-S-5	7.23	2959	-0.040	-0.008	0.006	0.011	0.000000	0.000000	-1811.64	170.34
3	GUIDE	670712896	9.52	5918	0.048	0.060	0.085	0.137	281.136637	-3.286600	1283.52	-212.51
4	GUIDE	670713328	7.57	5920	-0.082	-0.102	0.054	0.084	280.824681	-3.187771	980.58	-1349.38
5	GUIDE	670714008	9.03	5918	0.022	0.054	0.069	0.110	281.129237	-3.153193	804.63	-261.75
6	GUIDE	670830264	8.75	5919	-0.114	-0.032	0.065	0.105	281.361536	-3.231556	1046.99	585.67
7	GUIDE	670713072	9.02	5916	0.123	0.021	0.080	0.128	281.205407	-3.604132	2413.43	88.45

2.4 Star Slots

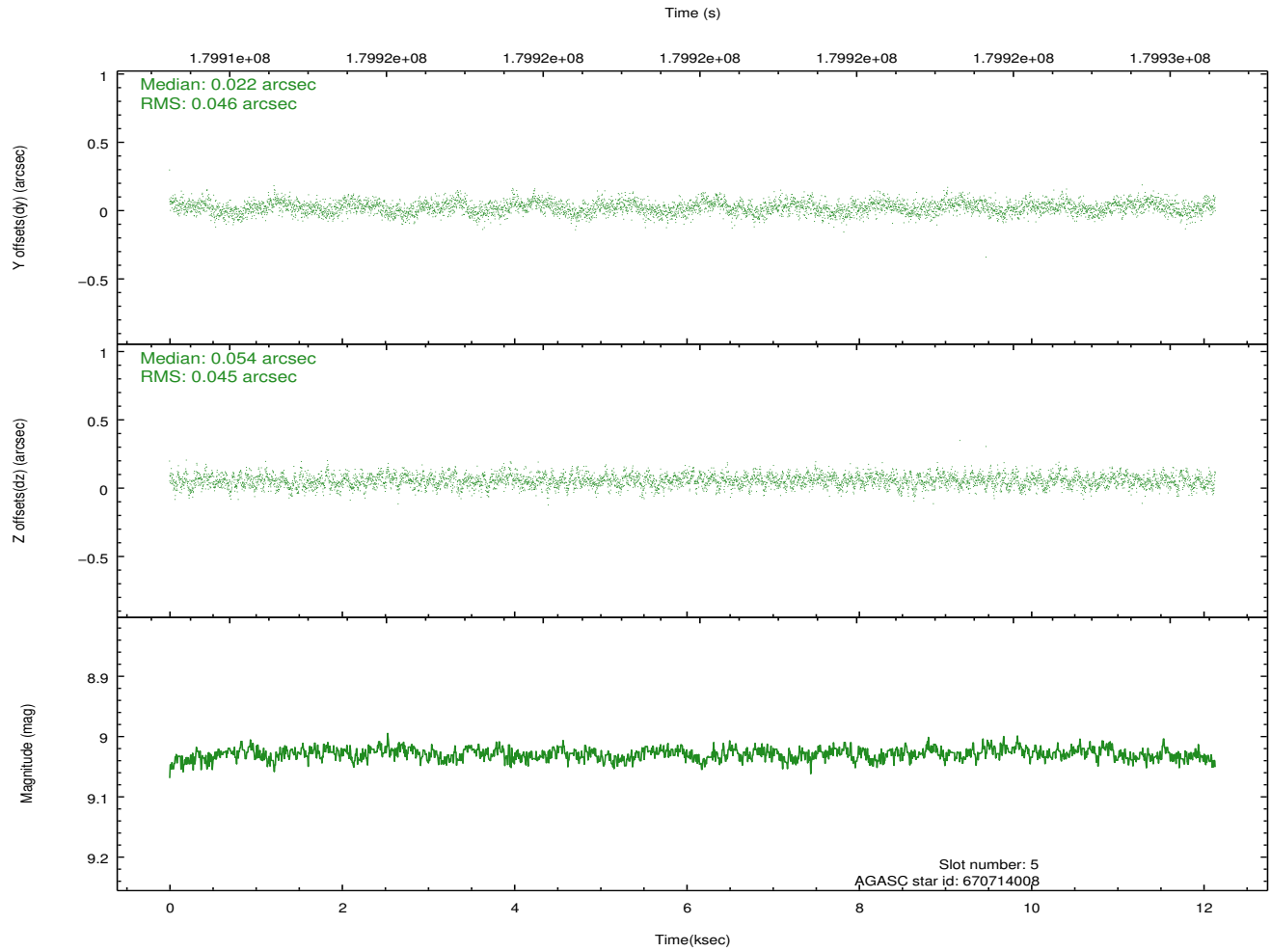
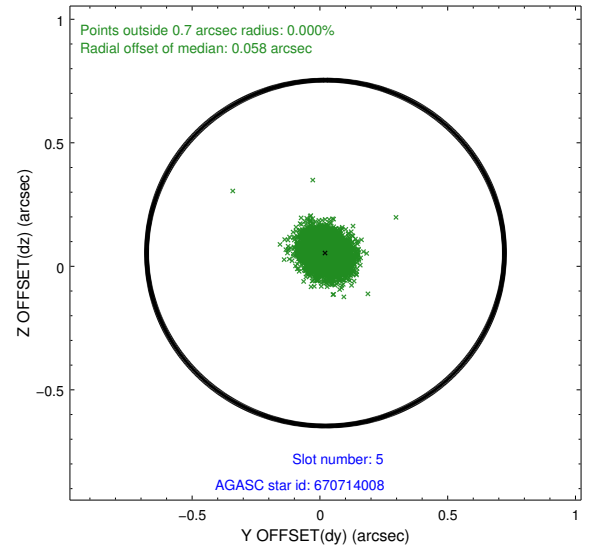
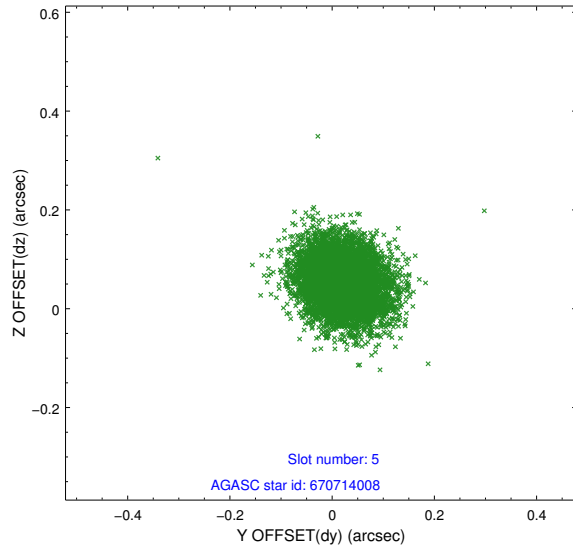
2.4.1 Slot 3



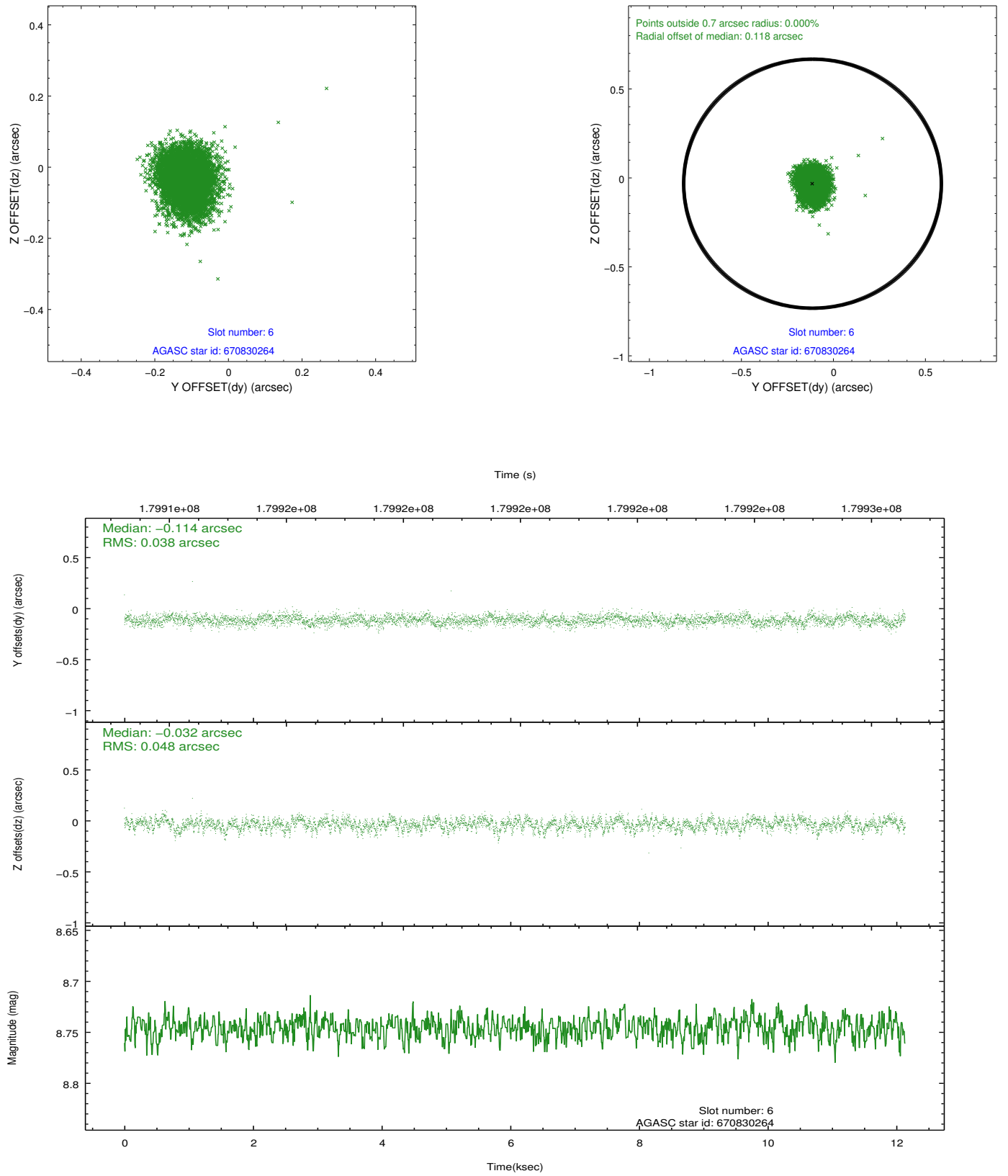
2.4.2 Slot 4



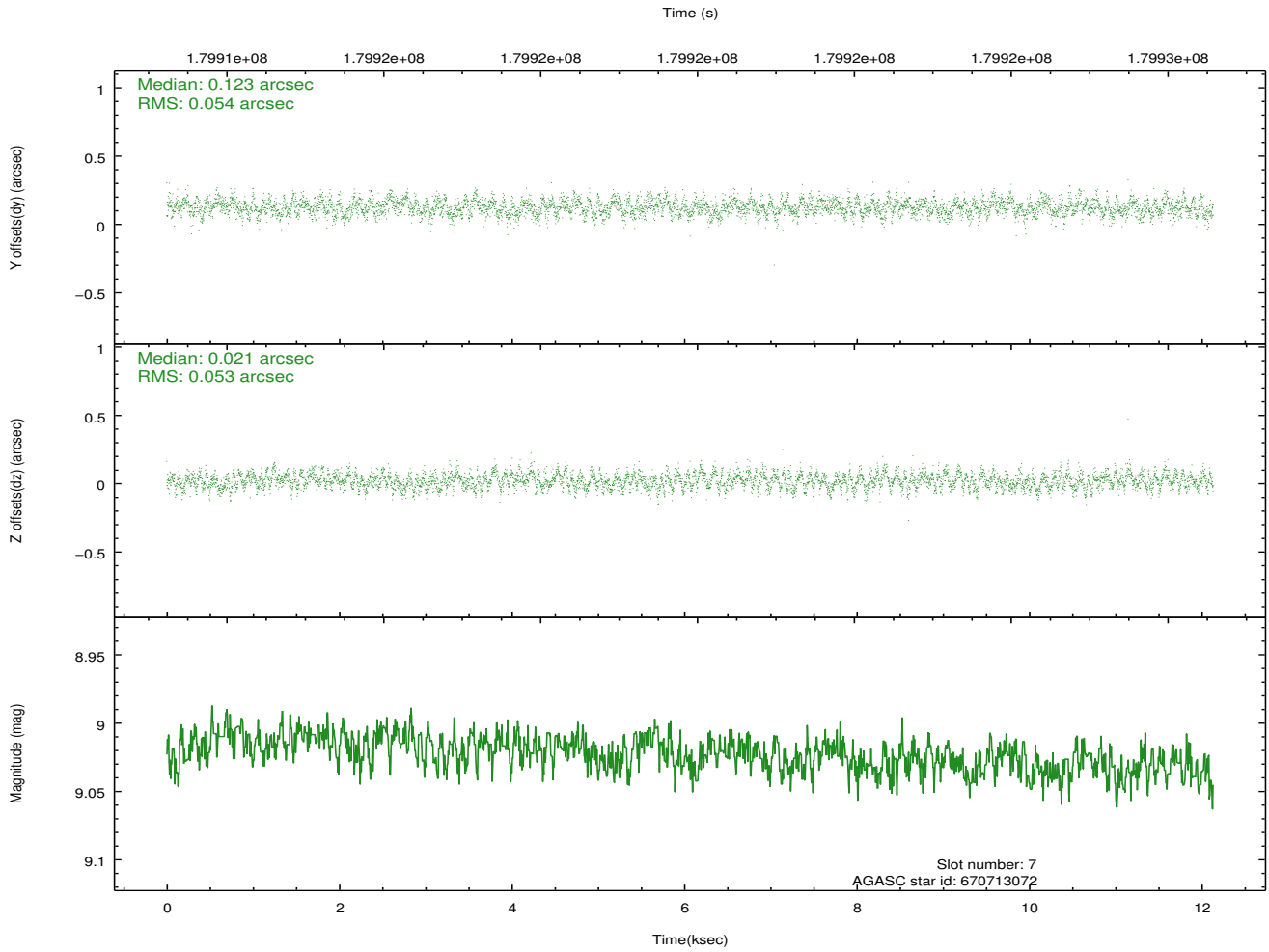
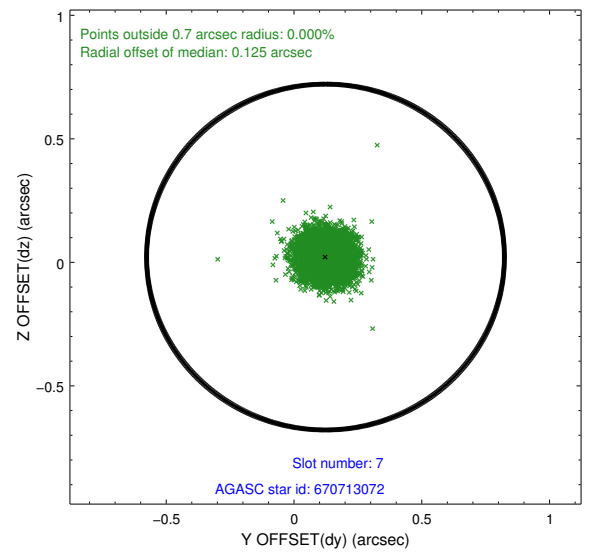
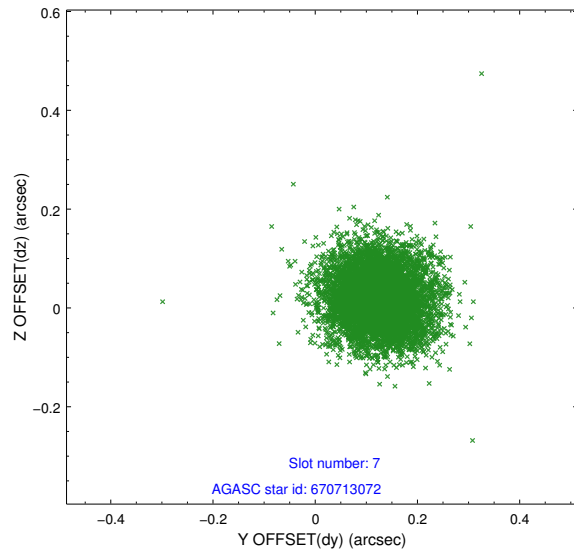
2.4.3 Slot 5



2.4.4 Slot 6

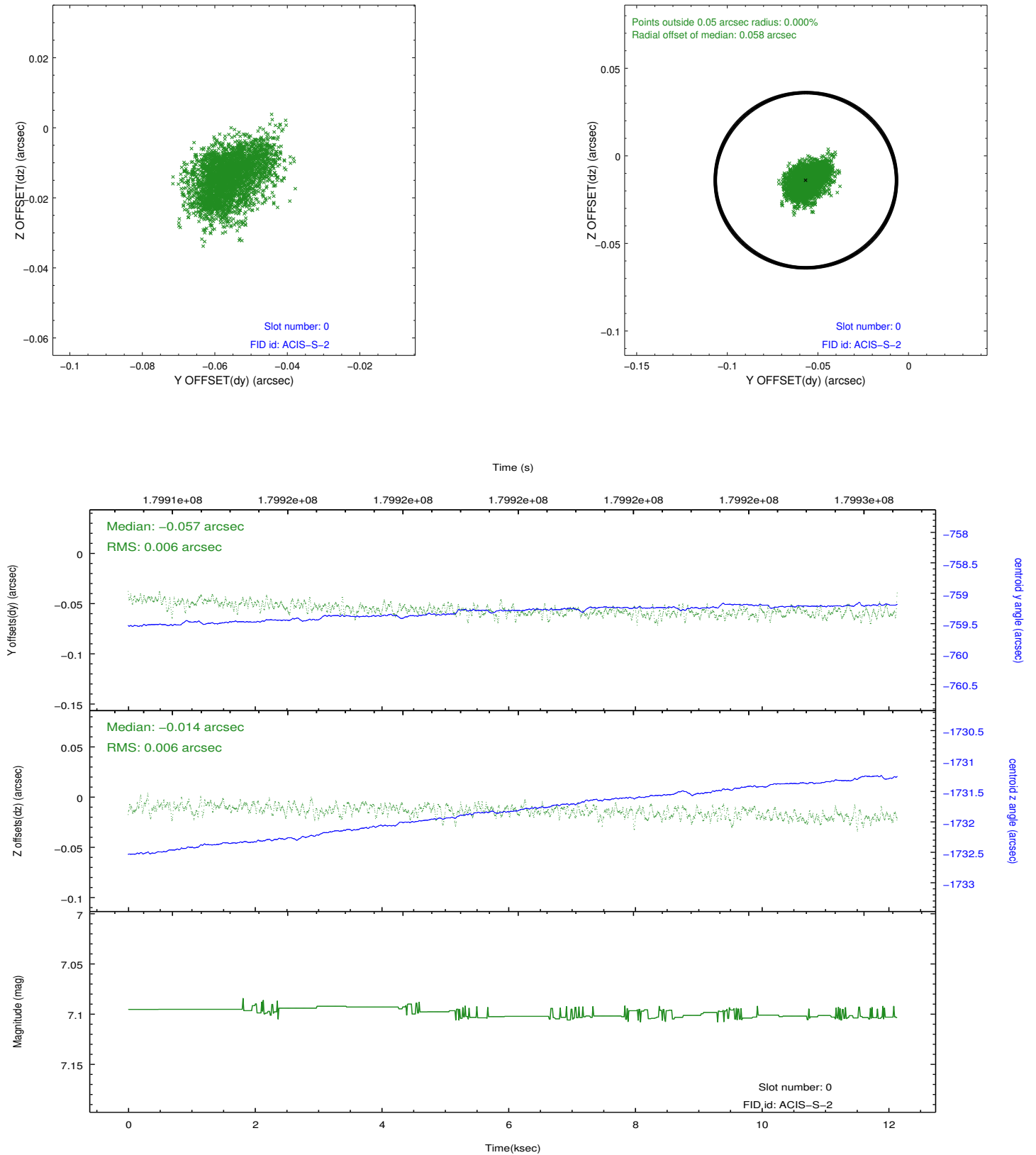


2.4.5 Slot 7

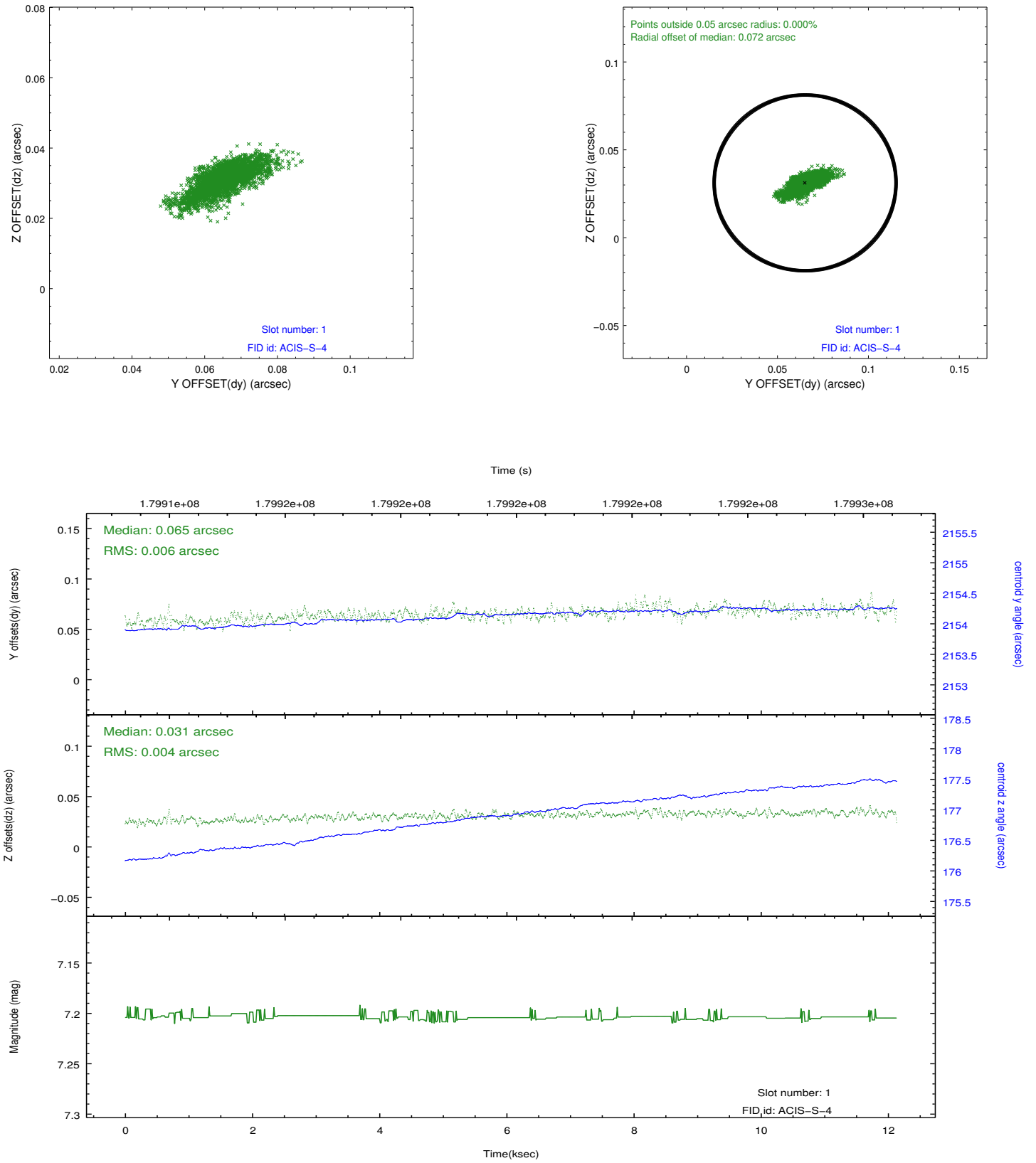


2.5 FID Slots

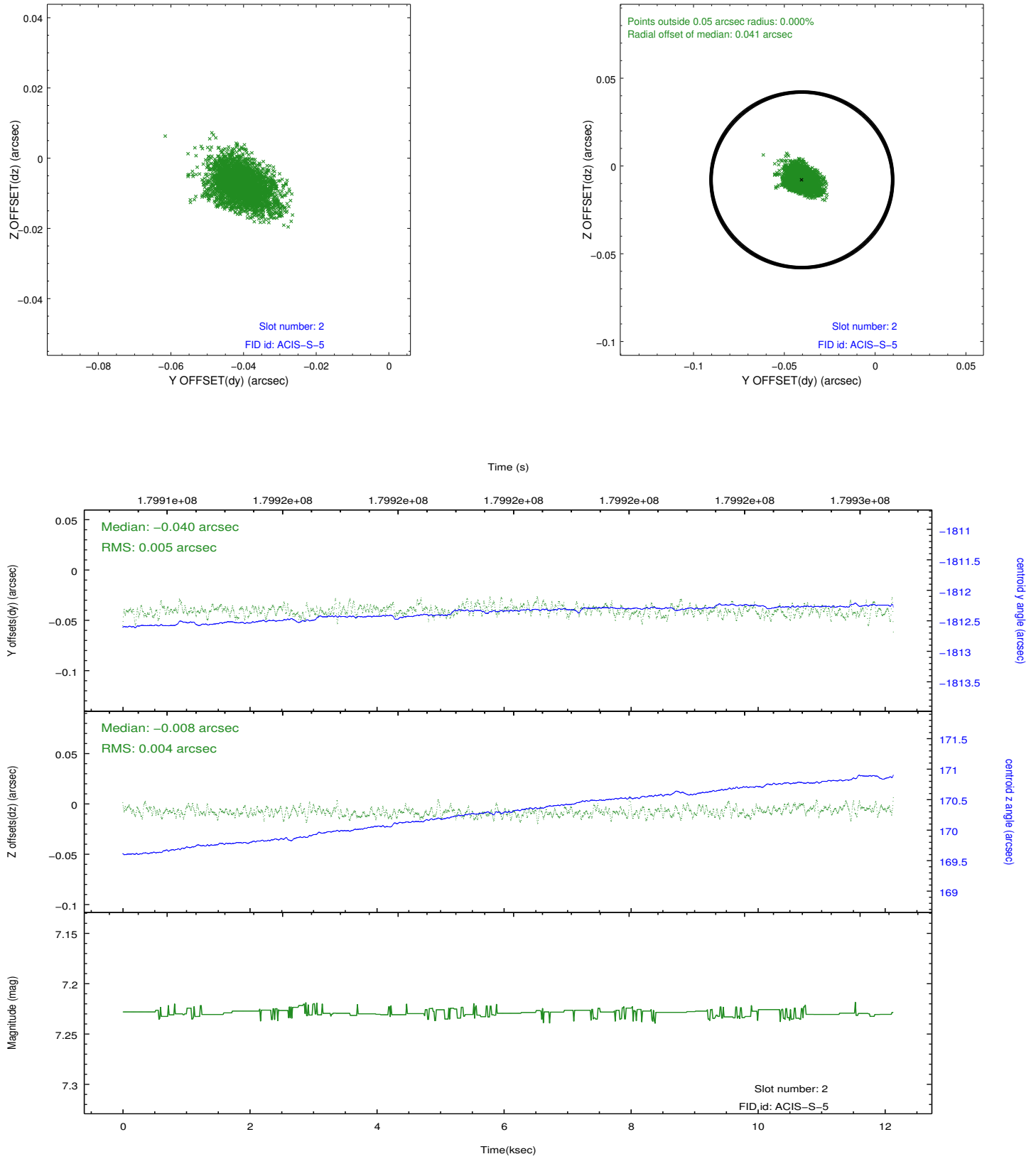
2.5.1 Slot 0



2.5.2 Slot 1



2.5.3 Slot 2



A Summary

A.1 Status

V&V Scientist	Jen Lauer
V&V Date (YYYY-MM-DD)	2012.11.29
V&V Edition	1
V&V Disposition and Status	OK
V&V Charge Time	11.929

A.2 Comments