

V&V Reference Report

L2 ASCDS Version : 7.6.8

Observation 3885 - L2 Version 001
Chandra X-Ray Center

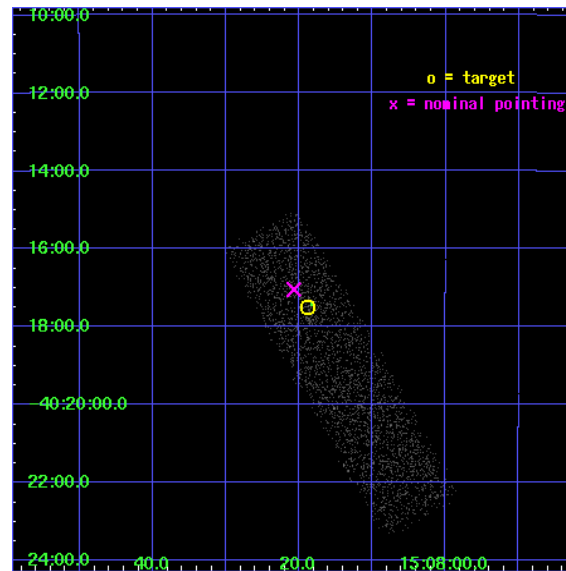
L2 Processing Date : Jul 24 2006

Contents

1	Front	2
2	OBI	3
2.1	OBI	3
2.1.1	Images	3
2.1.2	Bias	3
2.1.3	Parameters	4
2.1.4	Events	4
2.2	Compared Parameters	5
2.3	Aspect	6
2.4	Star Slots	9
2.4.1	Slot 3	9
2.4.2	Slot 4	10
2.4.3	Slot 5	11
2.4.4	Slot 6	12
2.4.5	Slot 7	13
2.5	FID Slots	14
2.5.1	Slot 0	14
2.5.2	Slot 1	15
2.5.3	Slot 2	16
3	Point Sources	17
A	Summary	18
A.1	Status	18
A.2	Comments	18

1 Front

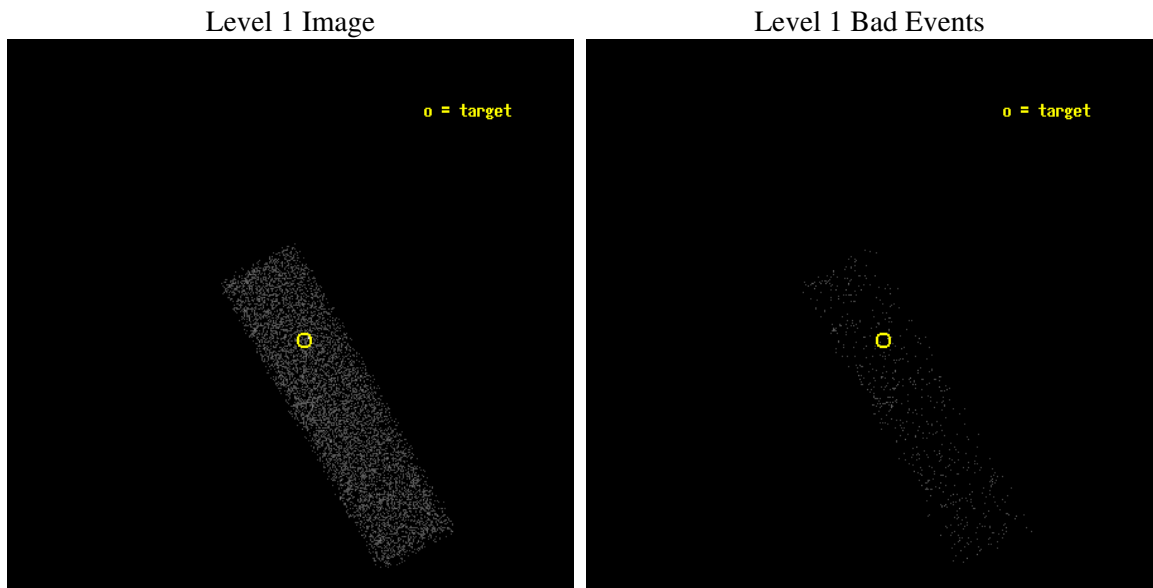
seq_num	500364
obs_id	3885
title	COMPLETING THE CENSUS OF COMPACT OBJECTS IN SUPERNOVA REMNANTS
observer	Dr David Kaplan
object	RX J150818.8-401730
dtcycle	0
cycle	P
ra_targ	227.078333
dec_targ	-40.291667
ra_nom	227.08644067057
dec_nom	-40.28407096098
roll_nom	60.243118217617
revision	2
ontime	3688.8000549674
livetime	3508.7986825525
ontime7	3688.8000549674
l2events	3775



2 OBI

2.1 OBI

2.1.1 Images



2.1.2 Bias

Chip 7



2.1.3 Parameters

obi_num	0
ascdsver	7.6.8
caldbver	3.2.2
date	2006-07-24T20:22:45
revision	2

sched_exp_time	3029.000000
ontime	3757.7260783613
ontime7	3757.7260783613
l1events	8726

2.1.4 Events

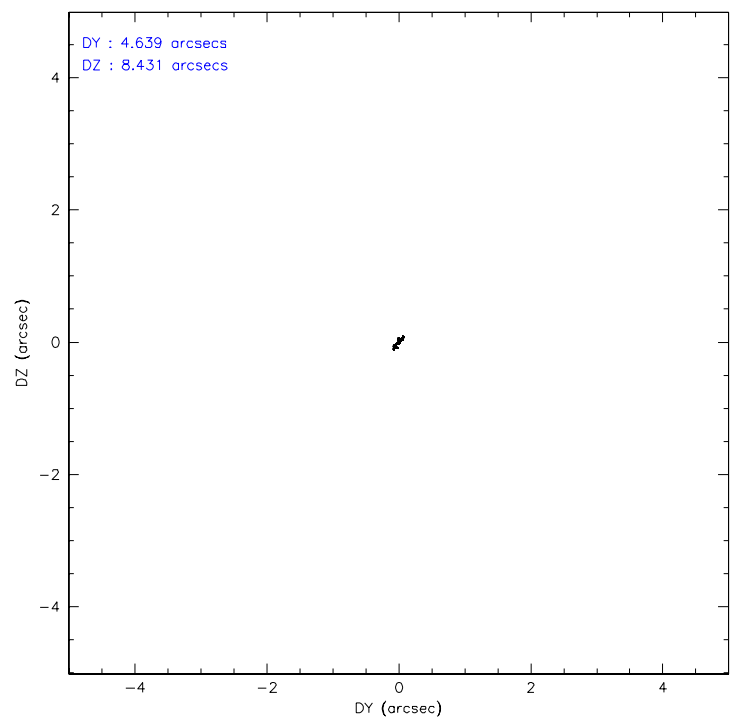
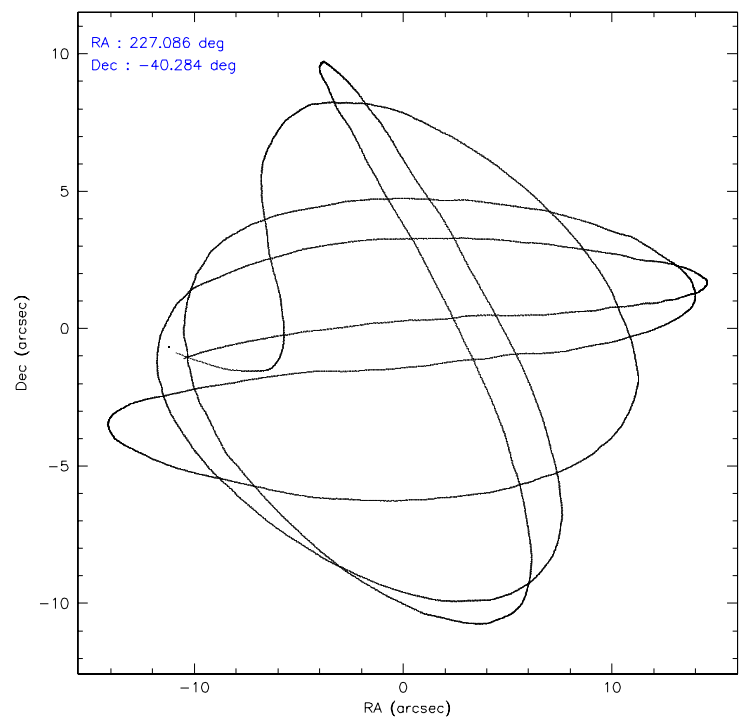
	ccd 7
level 1 events	8726
rejected events	4836
rejected %	55%

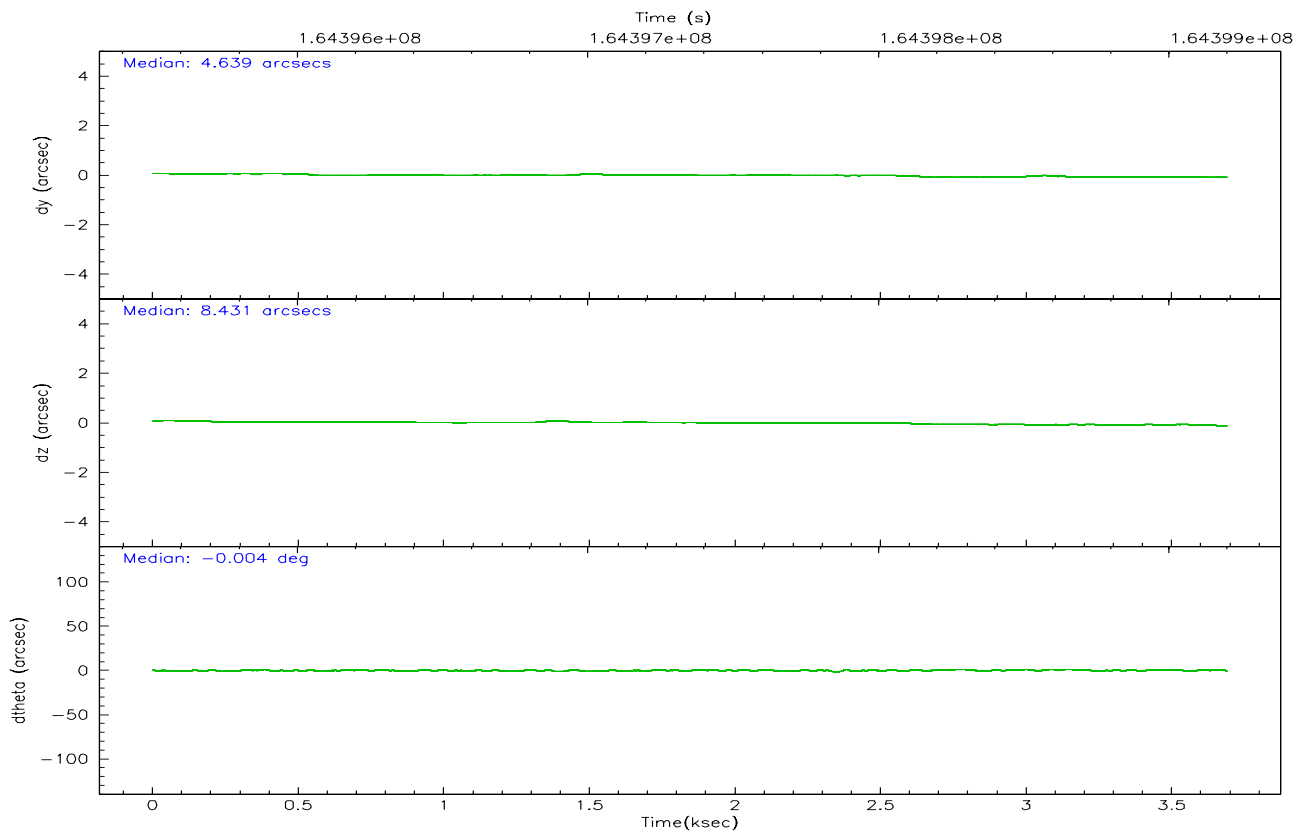
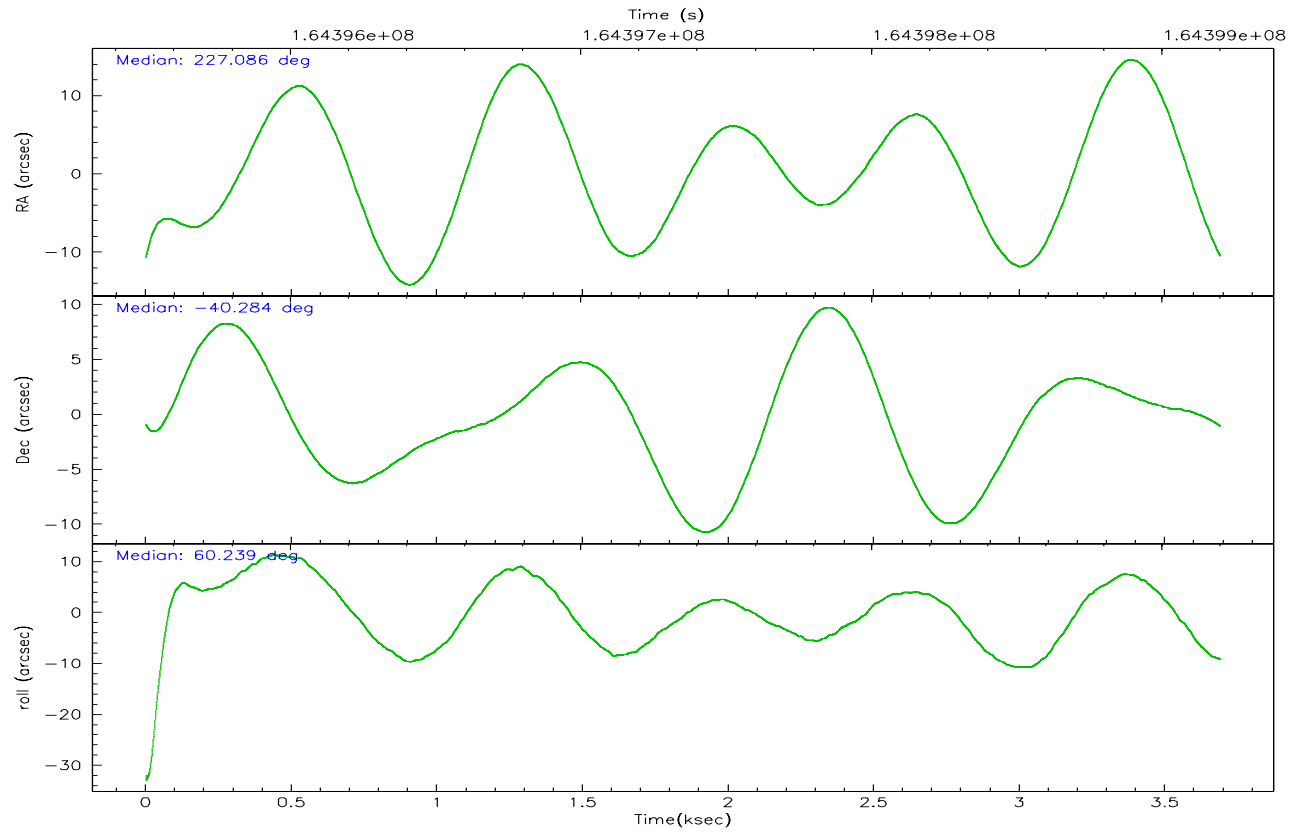
	ccd 7
grade 0 events	399
	4%
grade 1 events	2
	0%
grade 2 events	943
	10%
grade 3 events	361
	4%
grade 4 events	300
	3%
grade 5 events	582
	6%
grade 6 events	1954
	22%
grade 7 events	4185
	47%

2.2 Compared Parameters

Parameter	Planned	Actual	Parameter	Planned	Actual
Instrument	ACIS	ACIS	Obspar format version number	6	6
Detector	ACIS-7	ACIS-7	Obspar file type	PREDICTED	ACTUAL
Grating	NONE	NONE	Obspar update status	NONE	UPDATED
Data mode	FAINT	FAINT	On-chip summing requested	N	N
Observation mode	POINTING	POINTING	Subarray requested	1/4	1/4
Pointing RA	227.087094	227.0864406705722	Subarray start row	0	385
Pointing Dec	-40.311473	-40.28407096098005	Subarray row count	1024	256
Pointing Roll	60.087043	60.24311821761712	Alternating exposures requested	N	N
SIM focus pos (mm)	-0.684267	-0.6828225247311905	Primary exposure time	0.000000	0.8
SIM defocus (mm)	0	0.001444936568705701			
SIM translation stage pos (mm)	-190.132523	-190.1400660498719			
SIM translation stage offset (mm)	0	0.00754346686406393			
Observation start time	164396166.184000	164394962.15798			
Observation start date	2003-03-18T17:35:02	2003-03-18T17:16:02			
Observation end time	164399195.184000	164399350.69567			
Observation end date	2003-03-18T18:25:31	2003-03-18T18:29:10			
Read mode	TIMED	TIMED			

2.3 Aspect



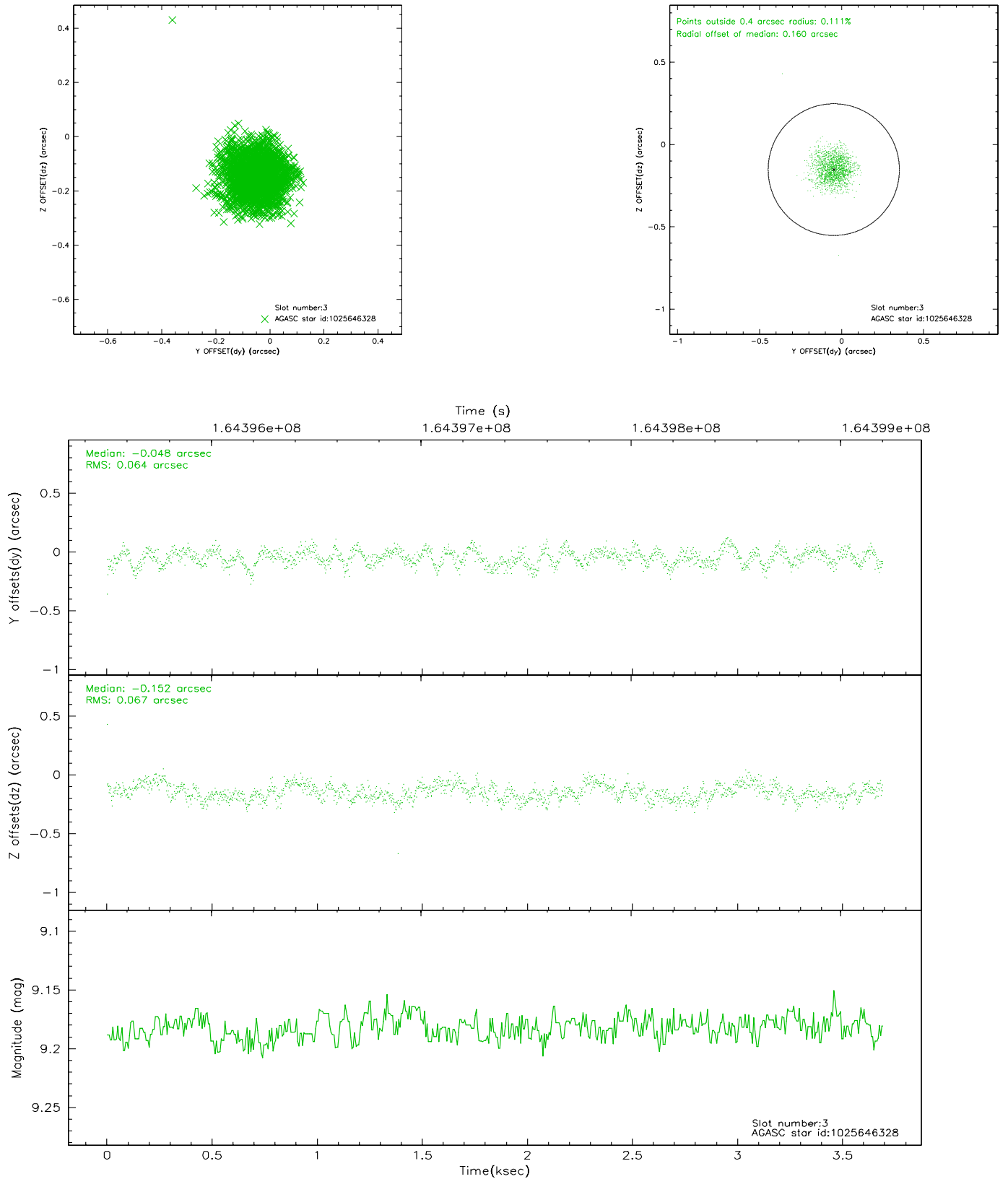


Slot Statistics

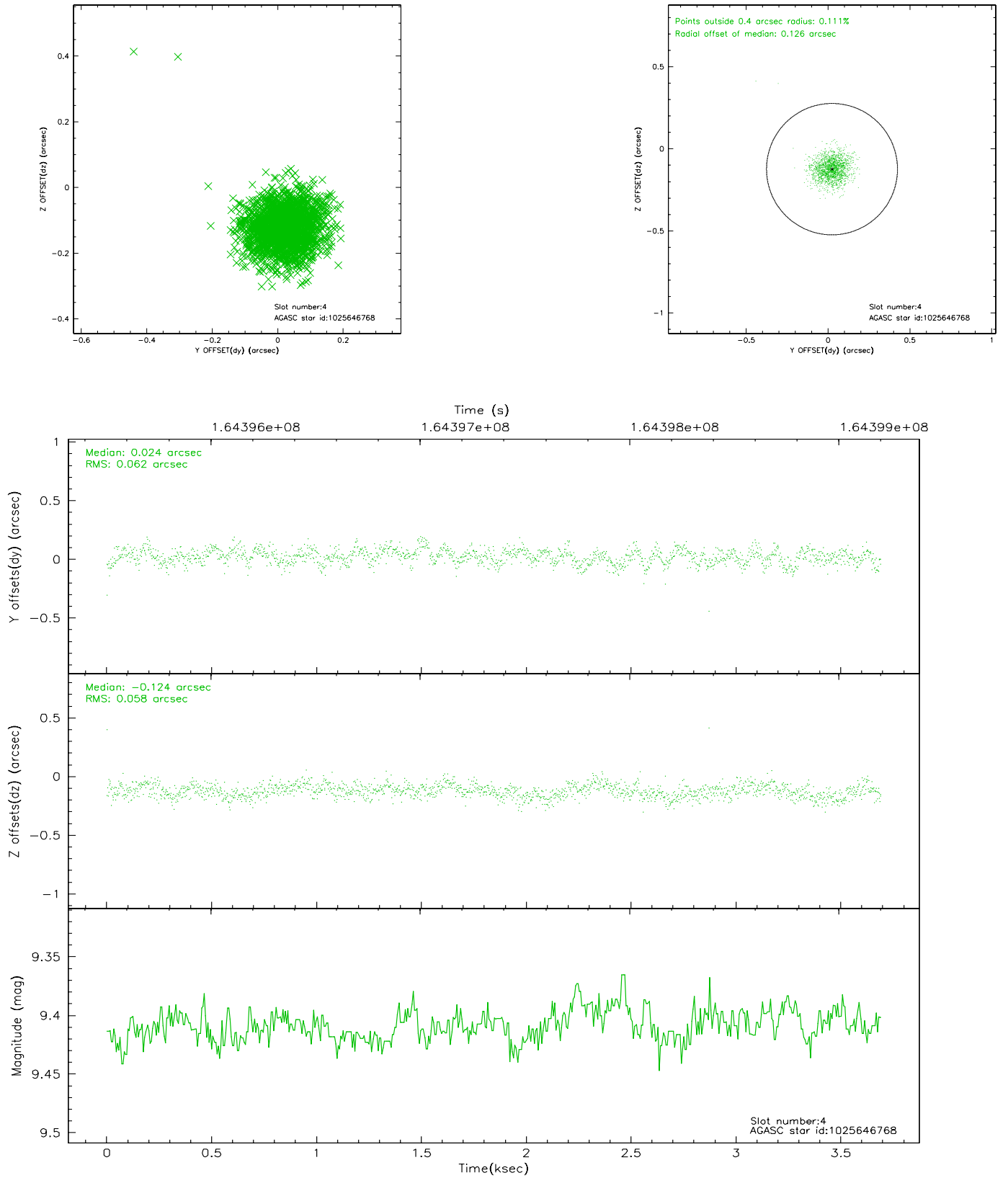
slot	status	id	mag	n_pts	med_dy	med_dz	dr1	dr2	ra	dec	mean_y	mean_z
0	FID	ACIS-S-2	7.11	900	-0.011	0.002	0.007	0.010	0.000000	0.000000	-757.33	-1729.62
1	FID	ACIS-S-4	7.21	899	-0.002	0.005	0.005	0.009	0.000000	0.000000	2155.19	177.09
2	FID	ACIS-S-5	7.24	901	-0.018	0.002	0.007	0.011	0.000000	0.000000	-1807.98	172.72
3	GUIDE	1025646328	9.18	1798	-0.048	-0.152	0.098	0.154	226.726414	-39.678395	1474.74	2001.44
4	GUIDE	1025646768	9.41	1801	0.024	-0.124	0.088	0.141	226.770574	-39.503973	2080.13	2212.03
5	GUIDE	1025771264	9.63	1800	-0.338	0.148	0.114	0.187	228.090113	-39.985137	2384.86	-1818.83
6	GUIDE	1025794112	8.80	1801	-0.249	0.644	0.089	0.142	227.544851	-41.004564	-1544.63	-2324.70
7	GUIDE	1025794136	8.18	1800	0.614	-0.524	0.066	0.107	227.574251	-41.007734	-1516.30	-2401.27

2.4 Star Slots

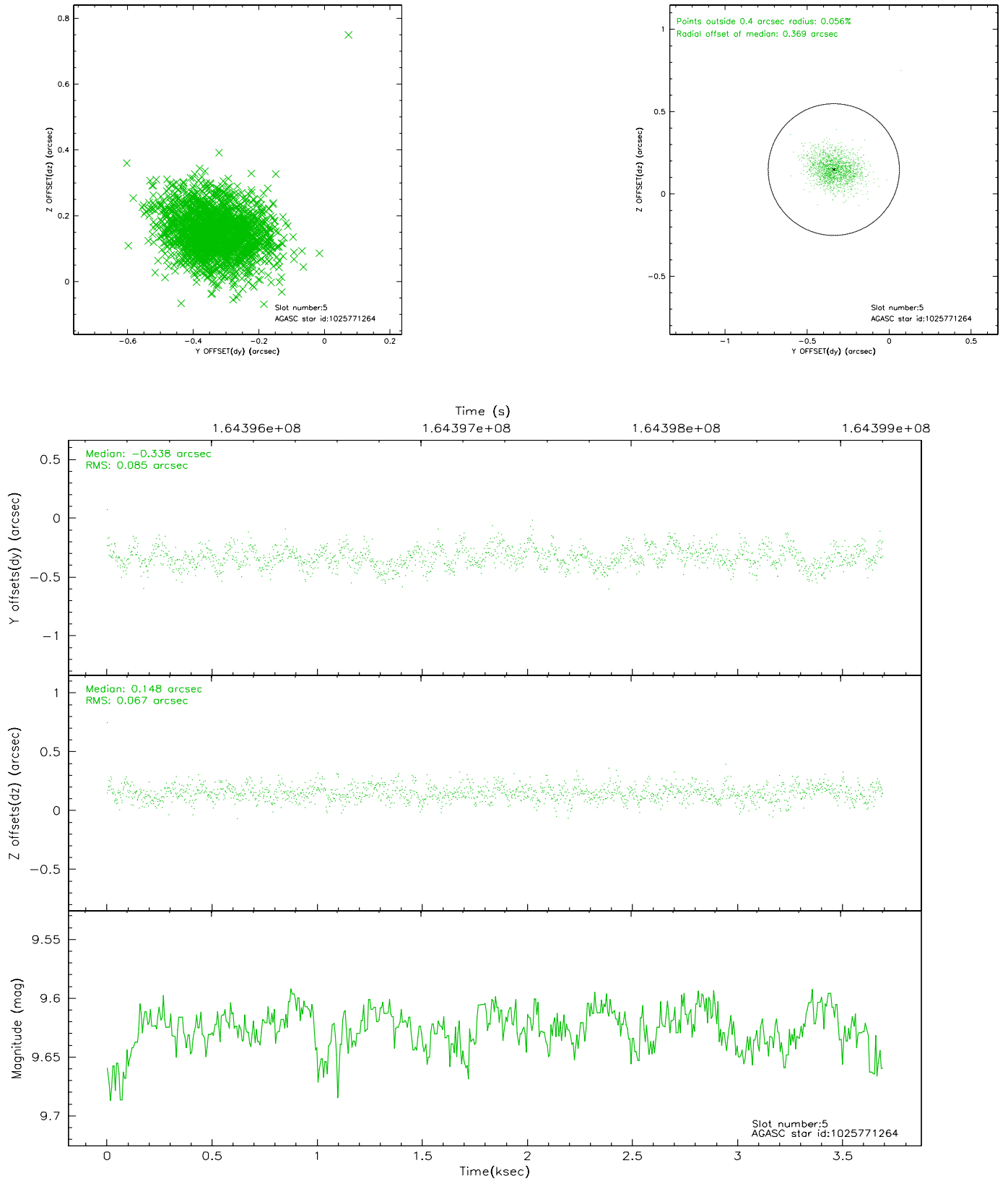
2.4.1 Slot 3



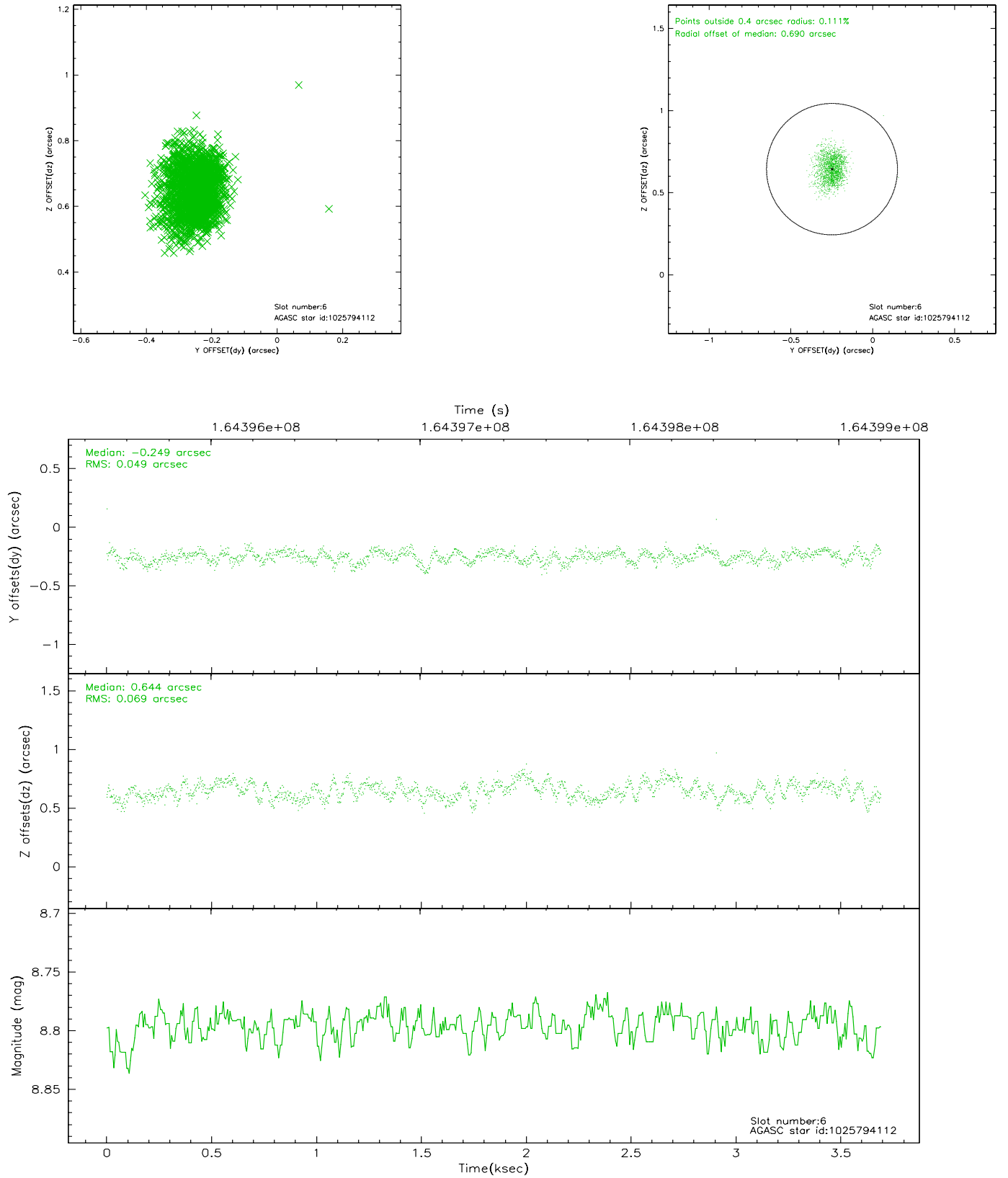
2.4.2 Slot 4



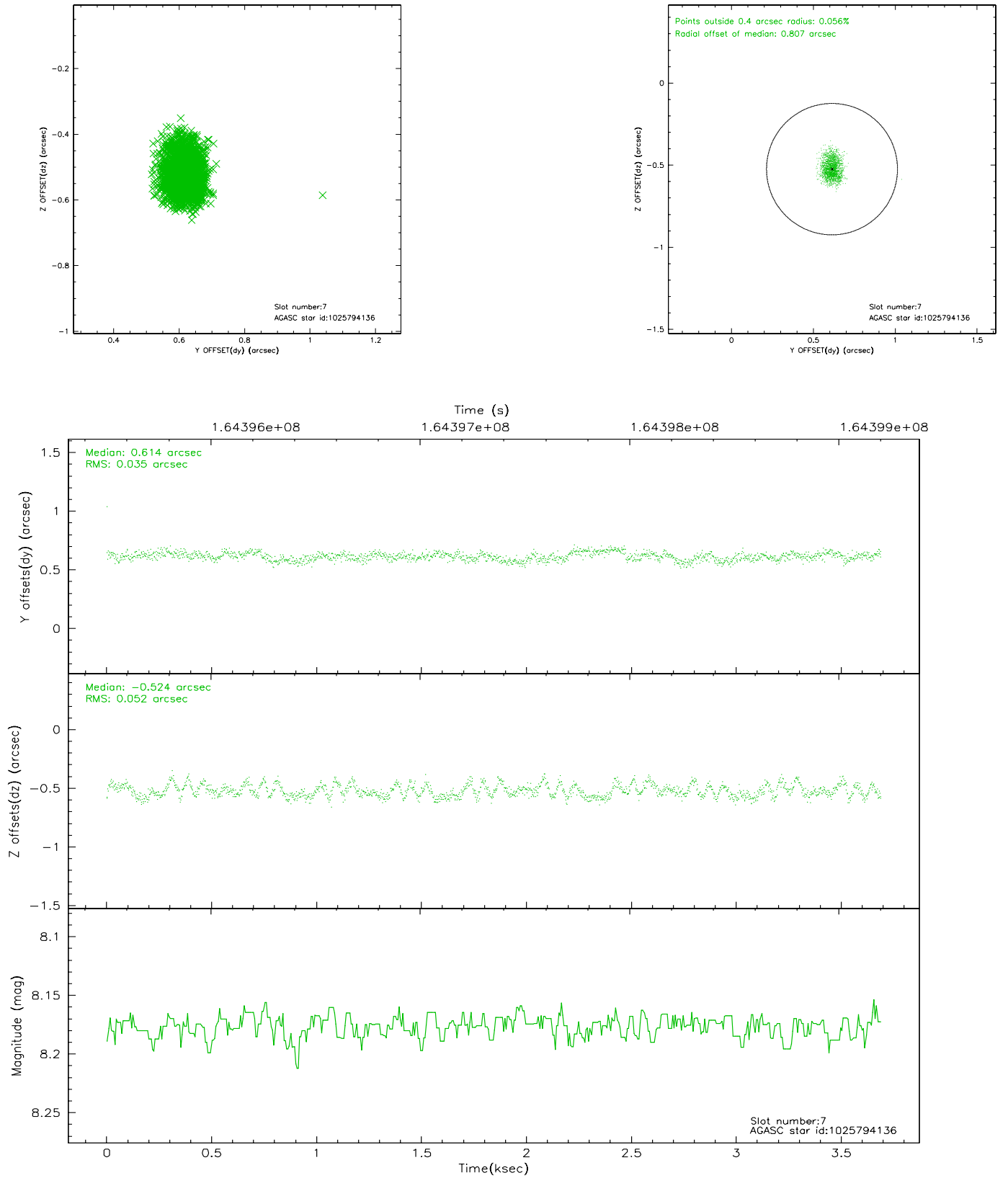
2.4.3 Slot 5



2.4.4 Slot 6

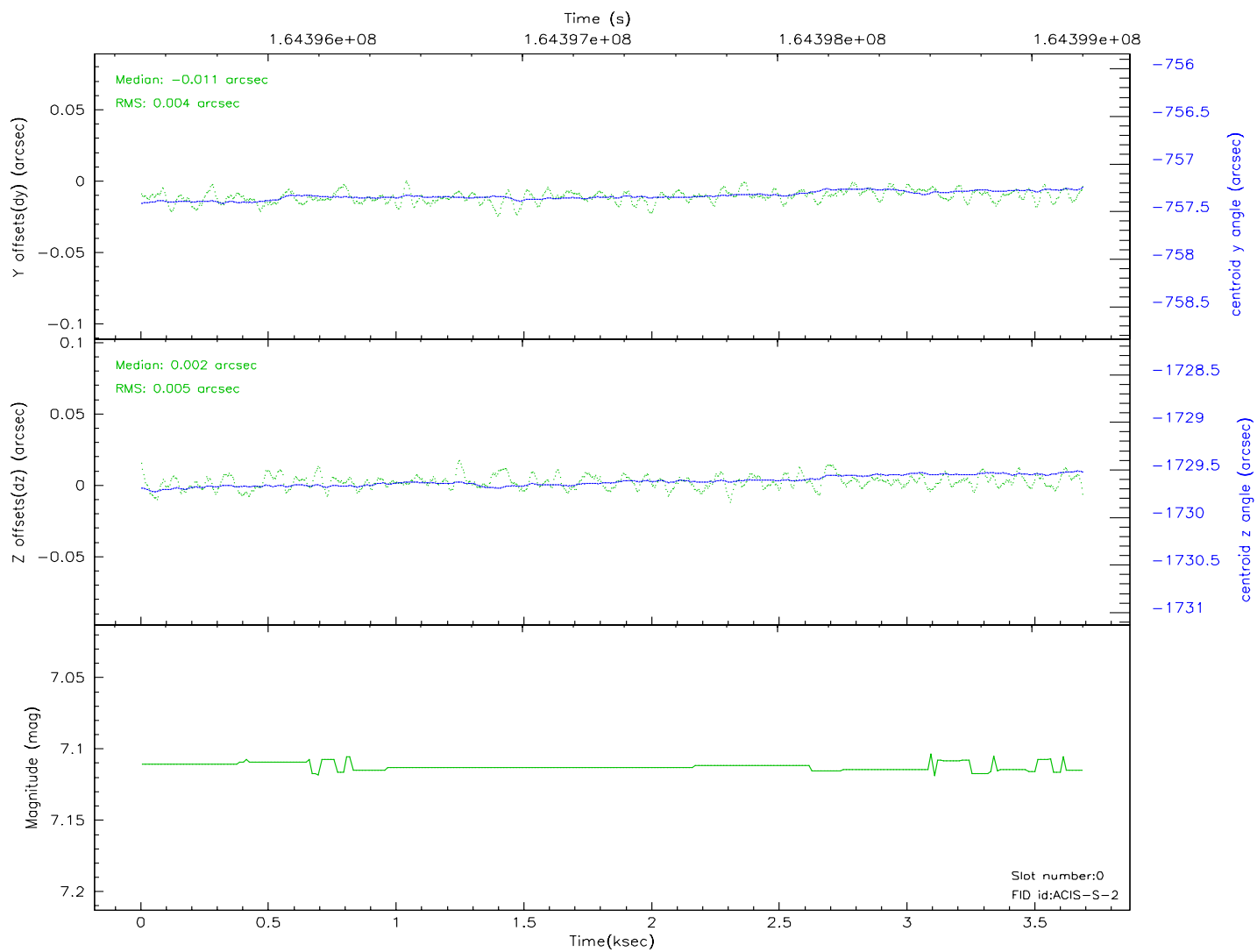
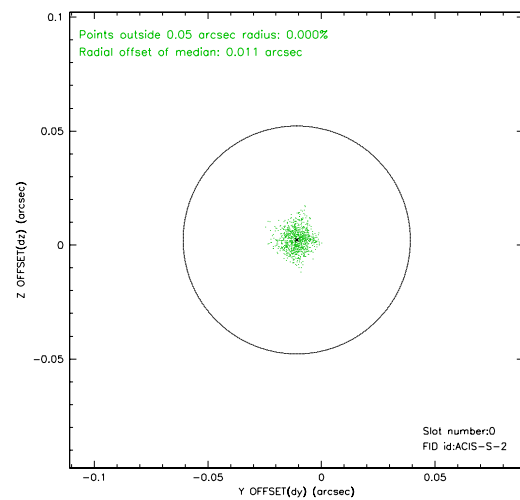
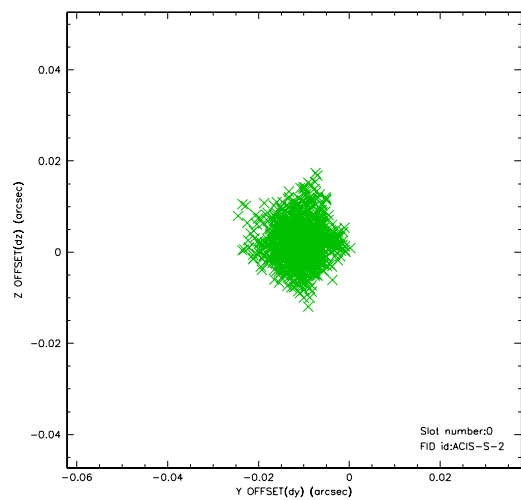


2.4.5 Slot 7

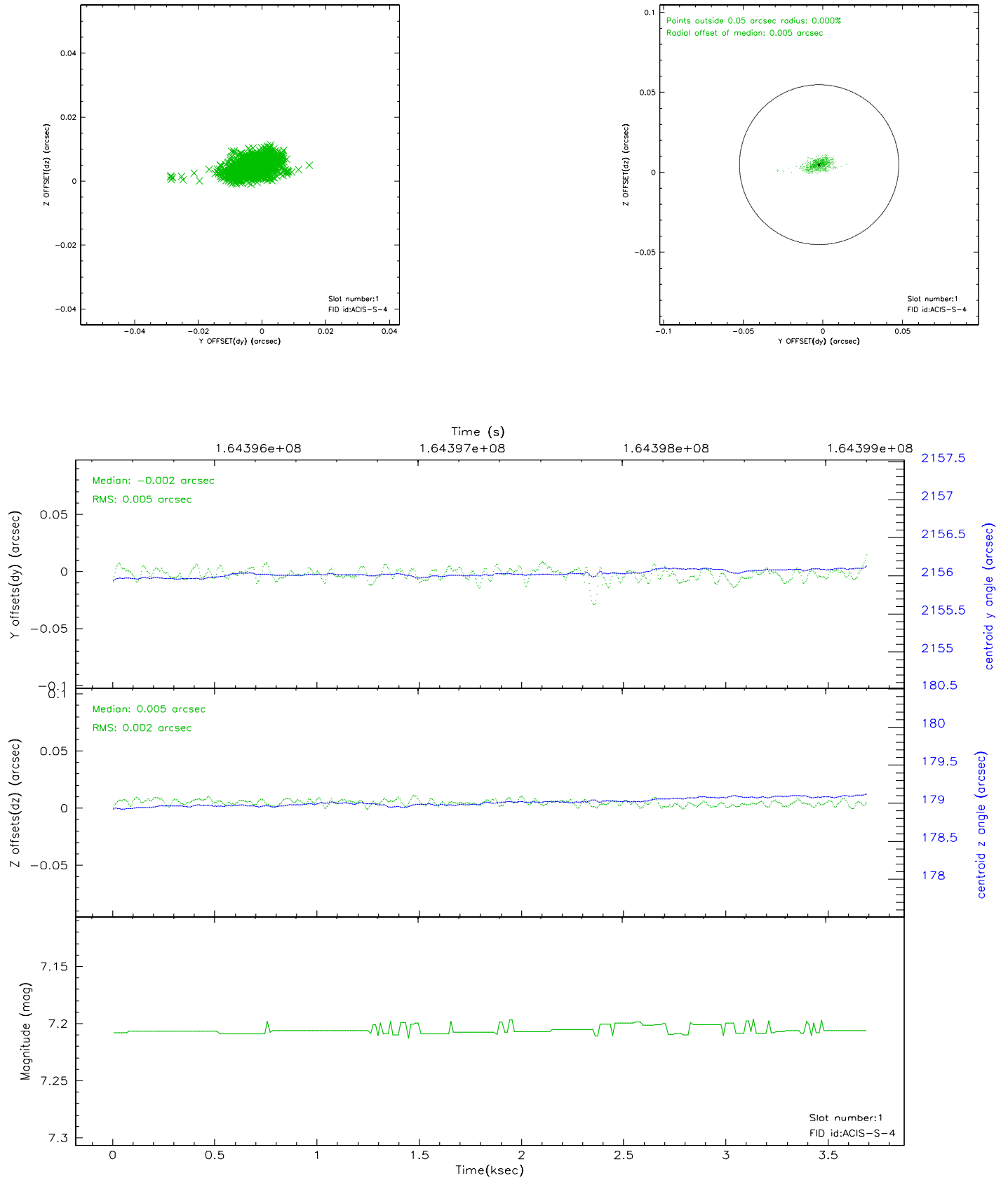


2.5 FID Slots

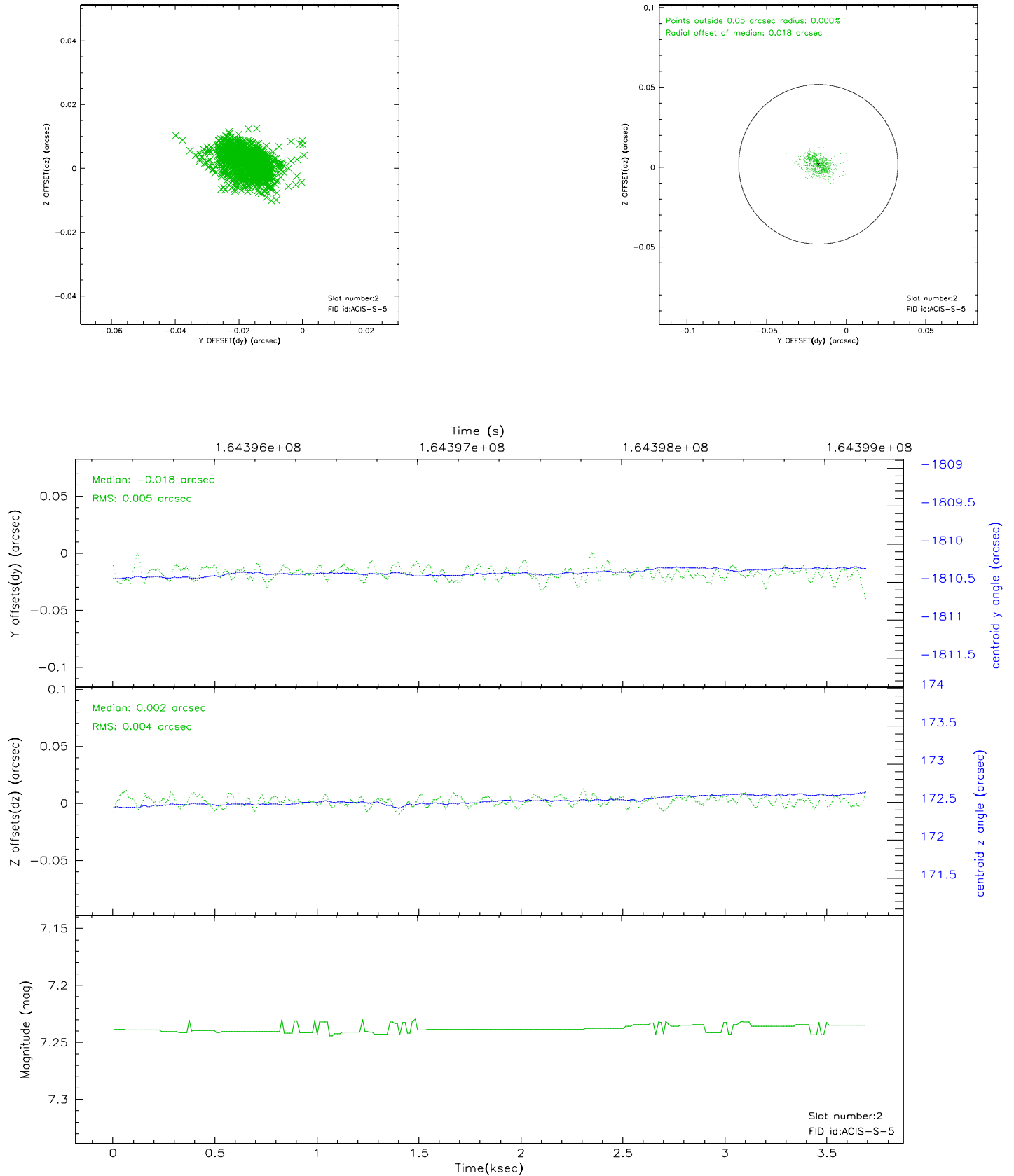
2.5.1 Slot 0



2.5.2 Slot 1



2.5.3 Slot 2



3 Point Sources

A Summary

A.1 Status

V&V Scientist	Beth Sundheim
V&V Date (YYYY-MM-DD)	2006.07.25
V&V Edition	1
V&V Disposition and Status	OK
V&V Charge Time	3.688

A.2 Comments