

V&V Reference Report

L2 ASCDS Version : 7.6.8.1

Observation 3834 - L2 Version 001
Chandra X-Ray Center

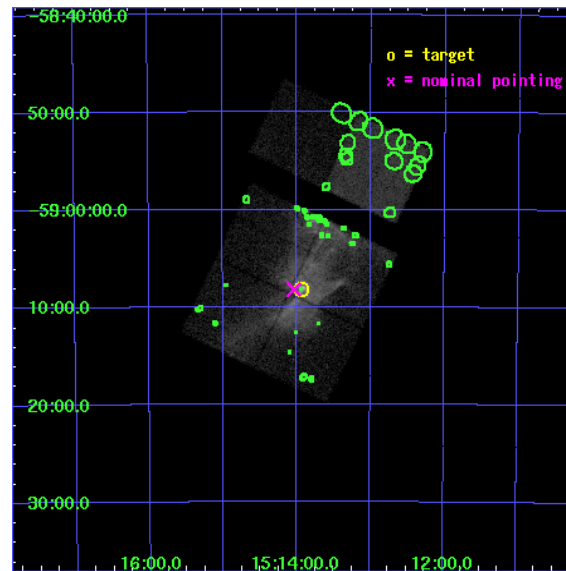
L2 Processing Date : Aug 4 2006

Contents

1	Front	2
2	OBI	3
2.1	OBI	3
2.1.1	Images	3
2.1.2	Bias	3
2.1.3	Parameters	4
2.1.4	Events	4
2.2	Compared Parameters	5
2.3	Aspect	6
2.4	Star Slots	9
2.4.1	Slot 3	9
2.4.2	Slot 4	10
2.4.3	Slot 5	11
2.4.4	Slot 6	12
2.4.5	Slot 7	13
2.5	FID Slots	14
2.5.1	Slot 0	14
2.5.2	Slot 1	15
2.5.3	Slot 2	16
3	Point Sources	17
A	Summary	18
A.1	Status	18
A.2	Comments	18

1 Front

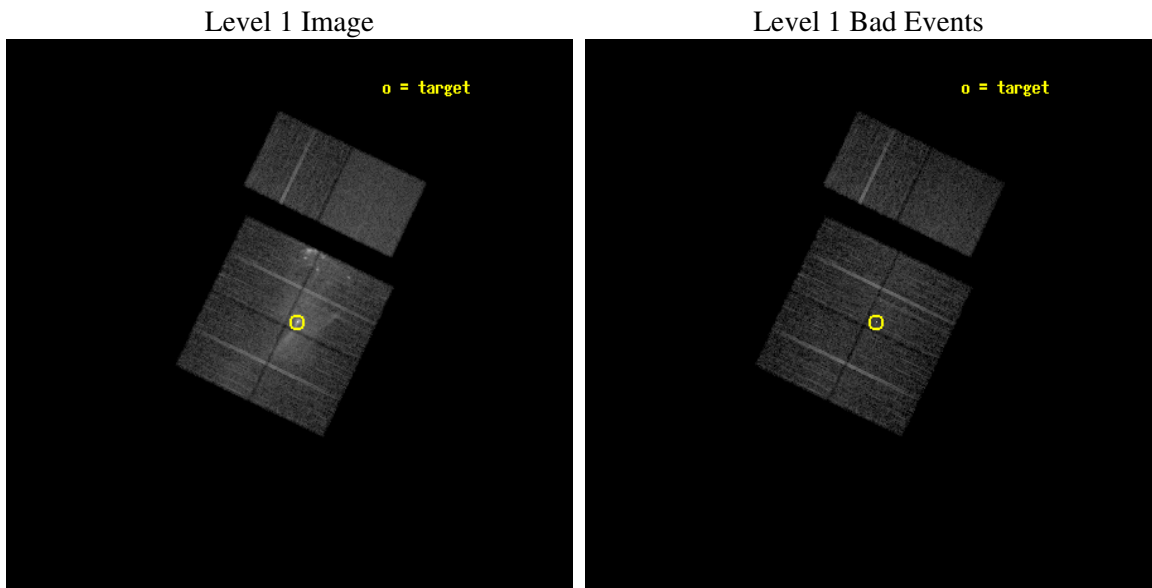
seq_num	500313
obs_id	3834
title	MULTI-EPOCH OBSERVATIONS OF PSR B1509-58 AND ITS NEBULA
observer	Prof. Bryan Gaensler
object	PSR B1509-58
dtcycle	0
cycle	P
ra_targ	228.481667
dec_targ	-59.135889
ra_nom	228.50942959234
dec_nom	-59.136614961106
roll_nom	25.624019877651
revision	2
ontime	9590.399964273
livetime	9468.9605452798
ontime0	9590.399964273
ontime1	9590.399964273
ontime2	9590.399964273
ontime3	9590.399964273
ontime6	9590.399964273
ontime7	9590.399964273
l2events	154208



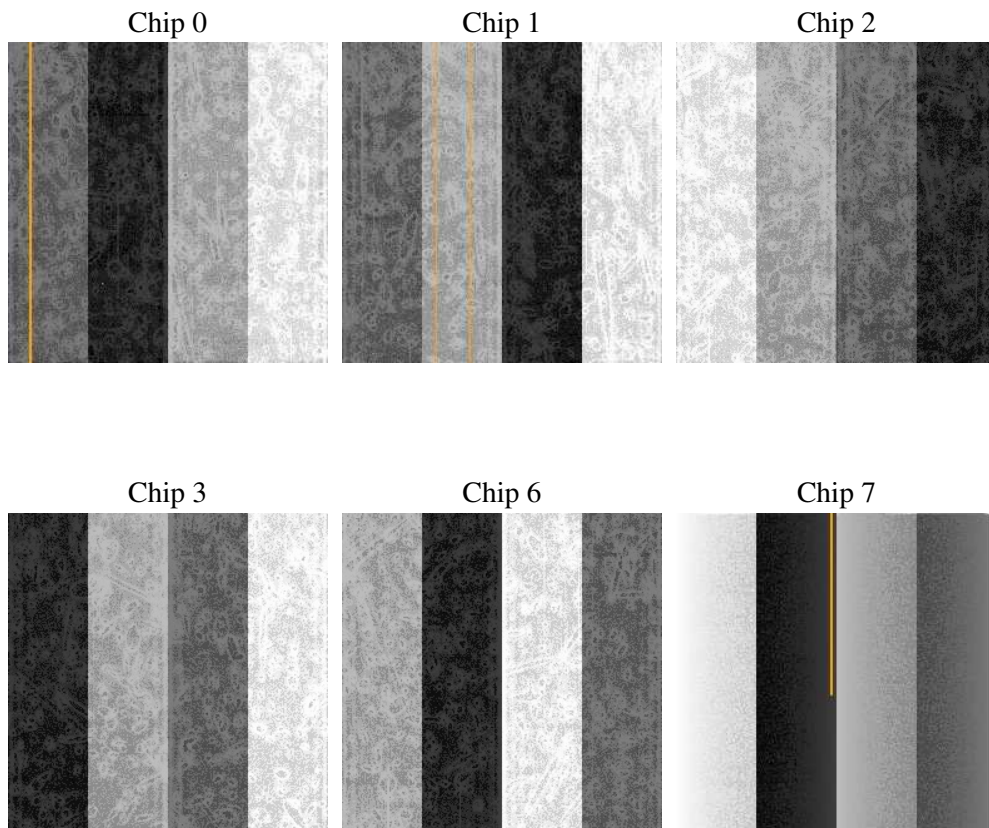
2 OBI

2.1 OBI

2.1.1 Images



2.1.2 Bias



2.1.3 Parameters

obi_num	1
ascdsver	7.6.8.1
caldbver	3.2.2
date	2006-08-05T00:24:00
revision	2

sched_exp_time	9625.000000
ontime	9593.3847458661
ontime0	9593.3847458661
ontime1	9593.3847259581
ontime2	9593.3847458661
ontime3	9593.3847458661
ontime6	9593.3847259581
ontime7	9593.3847458661
l1events	466972

2.1.4 Events

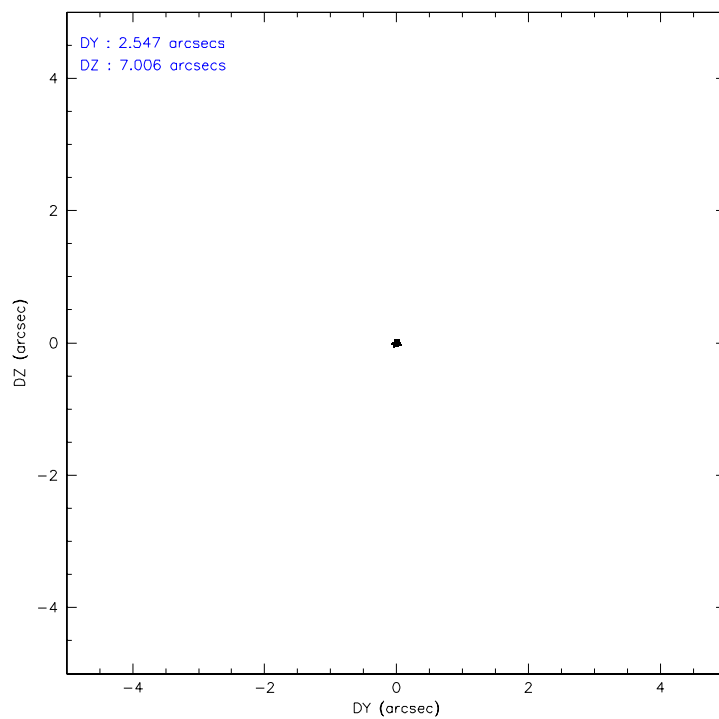
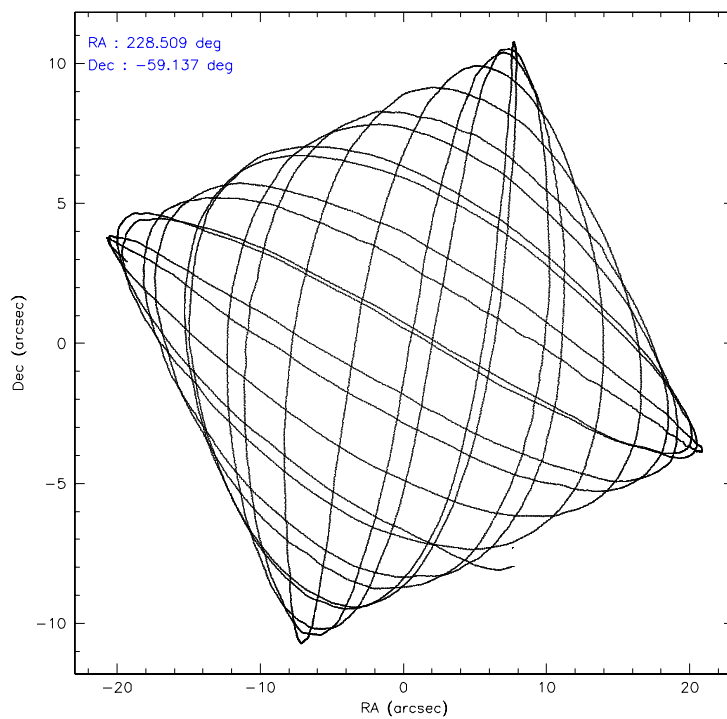
	ccd 0	ccd 1	ccd 2	ccd 3	ccd 6	ccd 7
level 1 events	66149	72528	79544	108113	60176	80462
rejected events	47930	47461	51590	54910	52108	48667
rejected %	72%	65%	64%	50%	86%	60%

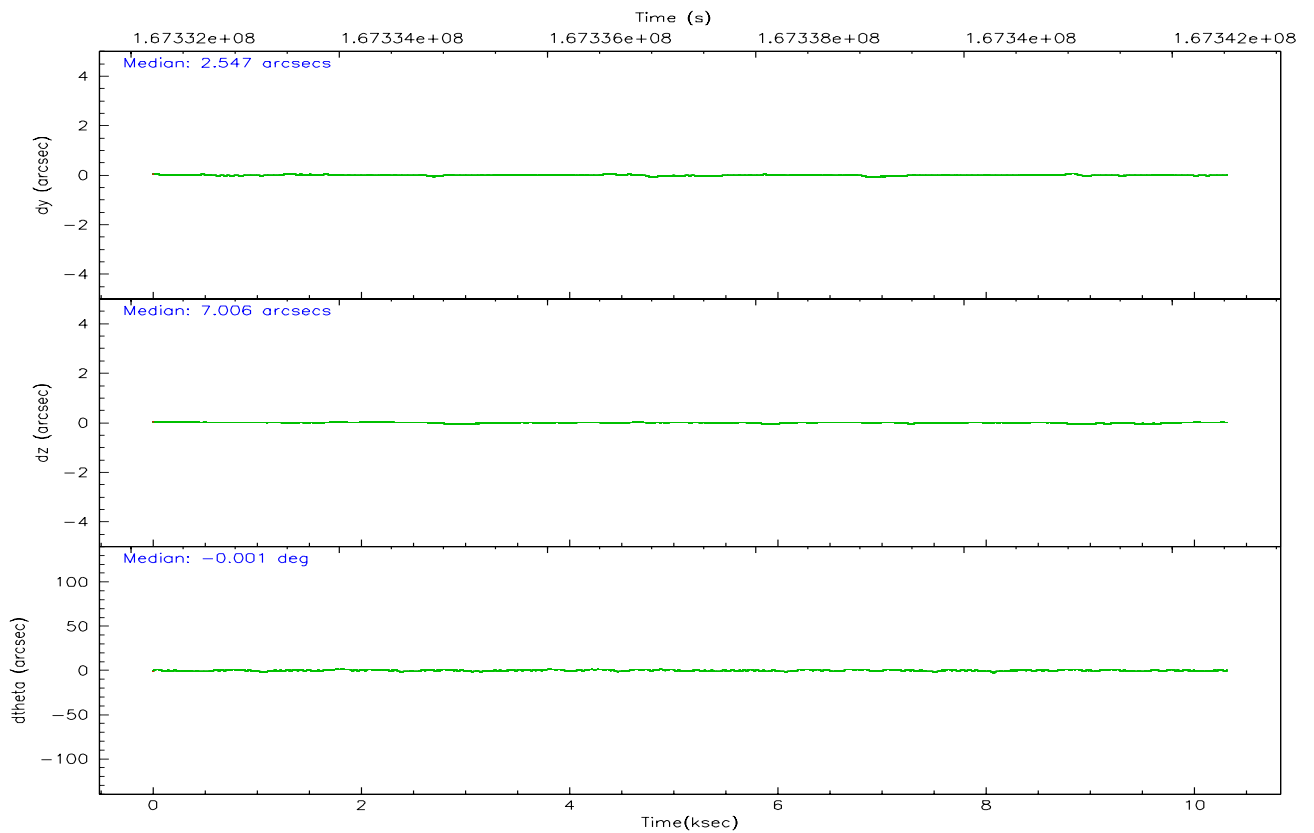
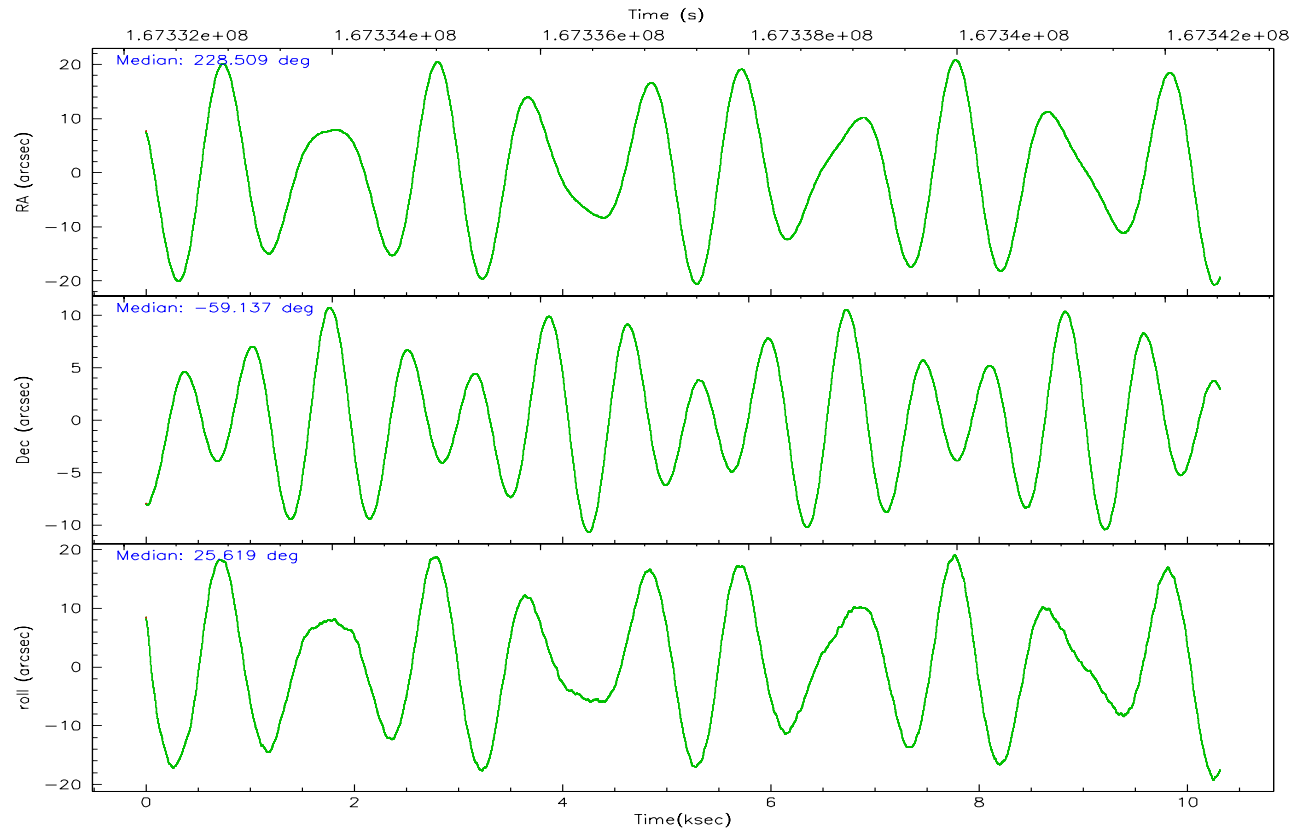
	ccd 0	ccd 1	ccd 2	ccd 3	ccd 6	ccd 7
grade 0 events	11709	16675	20447	38887	3586	2184
	17%	22%	25%	35%	5%	2%
grade 1 events	70	91	123	562	32	46
	0%	0%	0%	0%	0%	0%
grade 2 events	2658	3598	3376	6493	1583	7880
	4%	4%	4%	6%	2%	9%
grade 3 events	1128	1355	1289	2385	726	1762
	1%	1%	1%	2%	1%	2%
grade 4 events	1079	1399	1301	2358	717	1777
	1%	1%	1%	2%	1%	2%
grade 5 events	2404	2555	2361	3247	2808	5304
	3%	3%	2%	3%	4%	6%
grade 6 events	1648	2051	1553	3093	1458	18206
	2%	2%	1%	2%	2%	22%
grade 7 events	45453	44804	49094	51088	49266	43303
	68%	61%	61%	47%	81%	53%

2.2 Compared Parameters

Parameter	Planned	Actual	Parameter	Planned	Actual
Instrument	ACIS	ACIS	Obspar format version number	6	6
Detector	ACIS-012367	ACIS-012367	Obspar file type	PREDICTED	ACTUAL
Grating	NONE	NONE	Obspar update status	NONE	UPDATED
Data mode	FAINT	FAINT	On-chip summing requested	N	N
Observation mode	POINTING	POINTING	Subarray requested	NONE	NONE
Pointing RA	228.479568	228.5094295923435	Alternating exposures requested	N	N
Pointing Dec	-59.159284	-59.13661496110563	Primary exposure time	0.000000	3.2
Pointing Roll	25.389690	25.62401987765139			
SIM focus pos (mm)	-0.782348	-0.7809083437167272			
SIM defocus (mm)	0	0.001439871863259334			
SIM translation stage pos (mm)	-233.592463	-233.5874344608287			
SIM translation stage offset (mm)	0	-0.005018542100998502			
Observation start time	167332899.184000	167331688.75691			
Observation start date	2003-04-21T17:20:35	2003-04-21T17:01:28			
Observation end time	167342524.184000	167343654.09492			
Observation end date	2003-04-21T20:01:00	2003-04-21T20:20:54			
Read mode	TIMED	TIMED			

2.3 Aspect



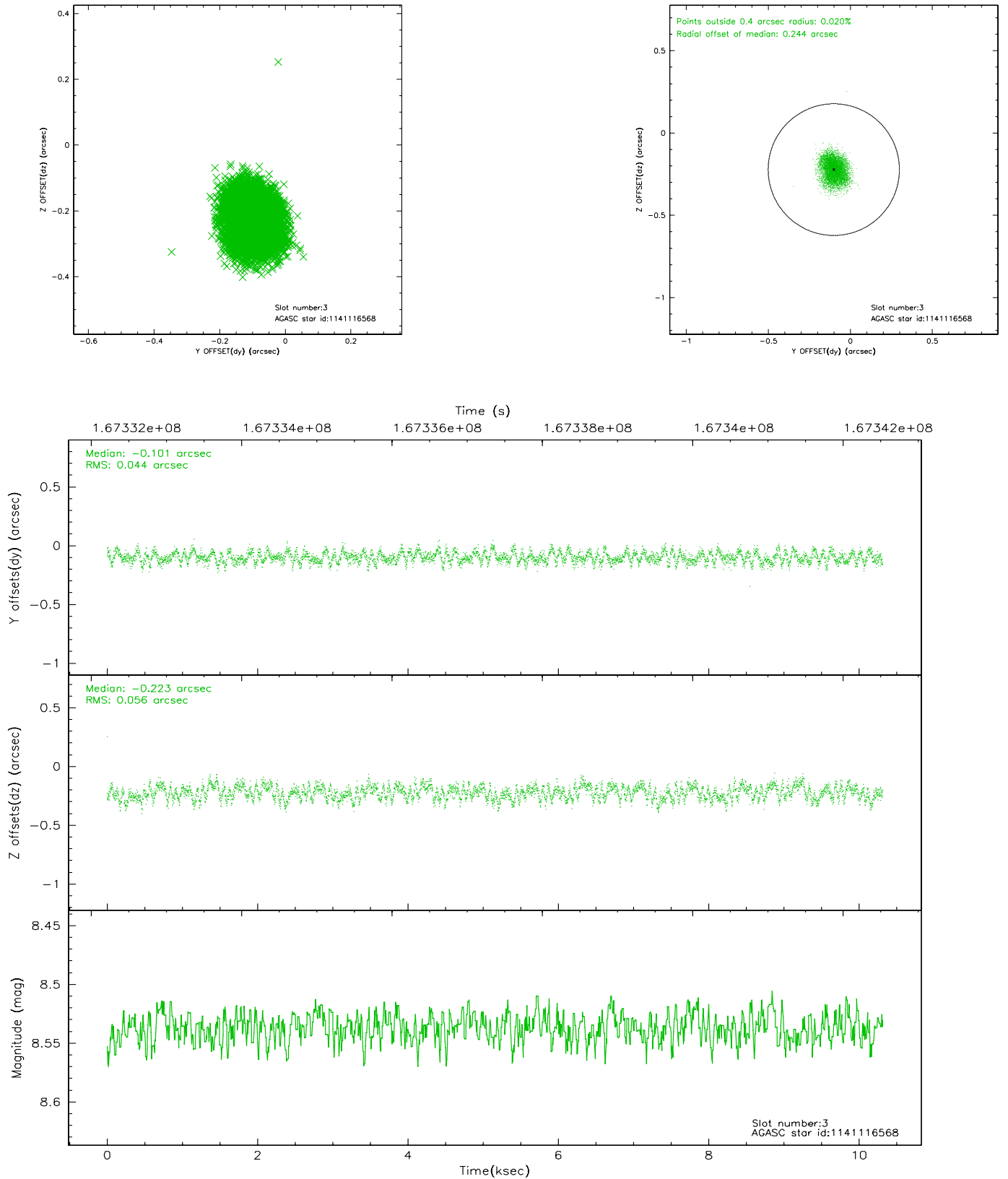


Slot Statistics

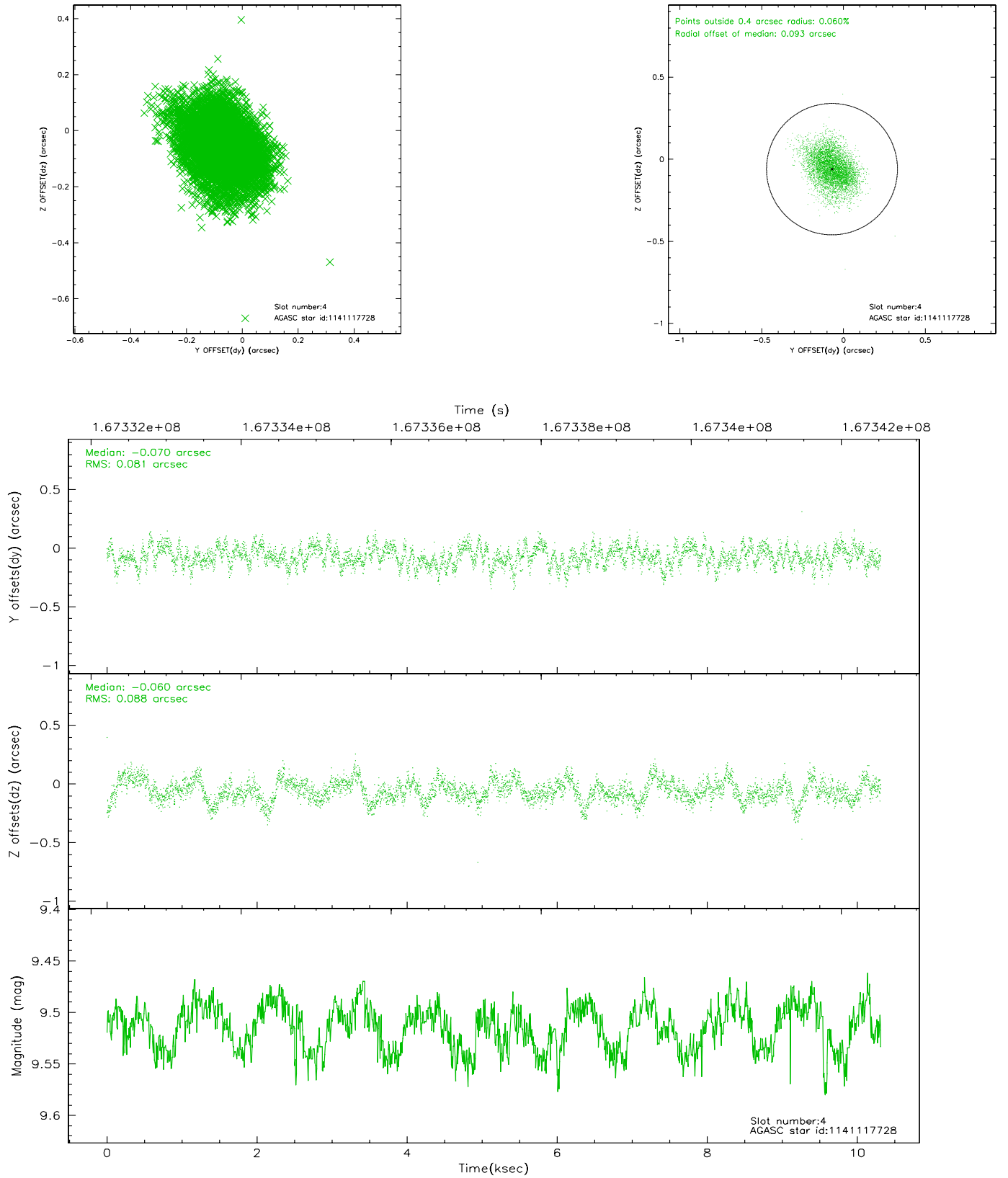
slot	status	id	mag	n_pts	med_dy	med_dz	dr1	dr2	ra	dec	mean_y	mean_z
0	FID	ACIS-I-1	7.24	2517	-0.007	0.035	0.009	0.016	0.000000	0.000000	937.24	-830.38
1	FID	ACIS-I-5	7.24	2517	-0.052	0.048	0.008	0.013	0.000000	0.000000	-1810.60	1066.92
2	FID	ACIS-I-6	7.26	2517	-0.031	-0.013	0.008	0.013	0.000000	0.000000	402.25	1711.90
3	GUIDE	1141116568	8.54	5030	-0.101	-0.223	0.077	0.119	228.578452	-58.520066	1154.63	1998.98
4	GUIDE	1141117728	9.51	5030	-0.070	-0.060	0.127	0.205	228.608878	-58.618268	1054.34	1655.82
5	GUIDE	1141118720	9.45	5031	0.152	0.120	0.082	0.134	227.772709	-59.614232	-1867.26	-933.65
6	GUIDE	1141119096	9.45	5023	0.152	0.027	0.111	0.178	228.052751	-59.529718	-1276.77	-873.33
7	GUIDE	1141119896	8.40	5032	-0.133	0.140	0.068	0.108	229.637327	-59.405643	1528.26	-1727.36

2.4 Star Slots

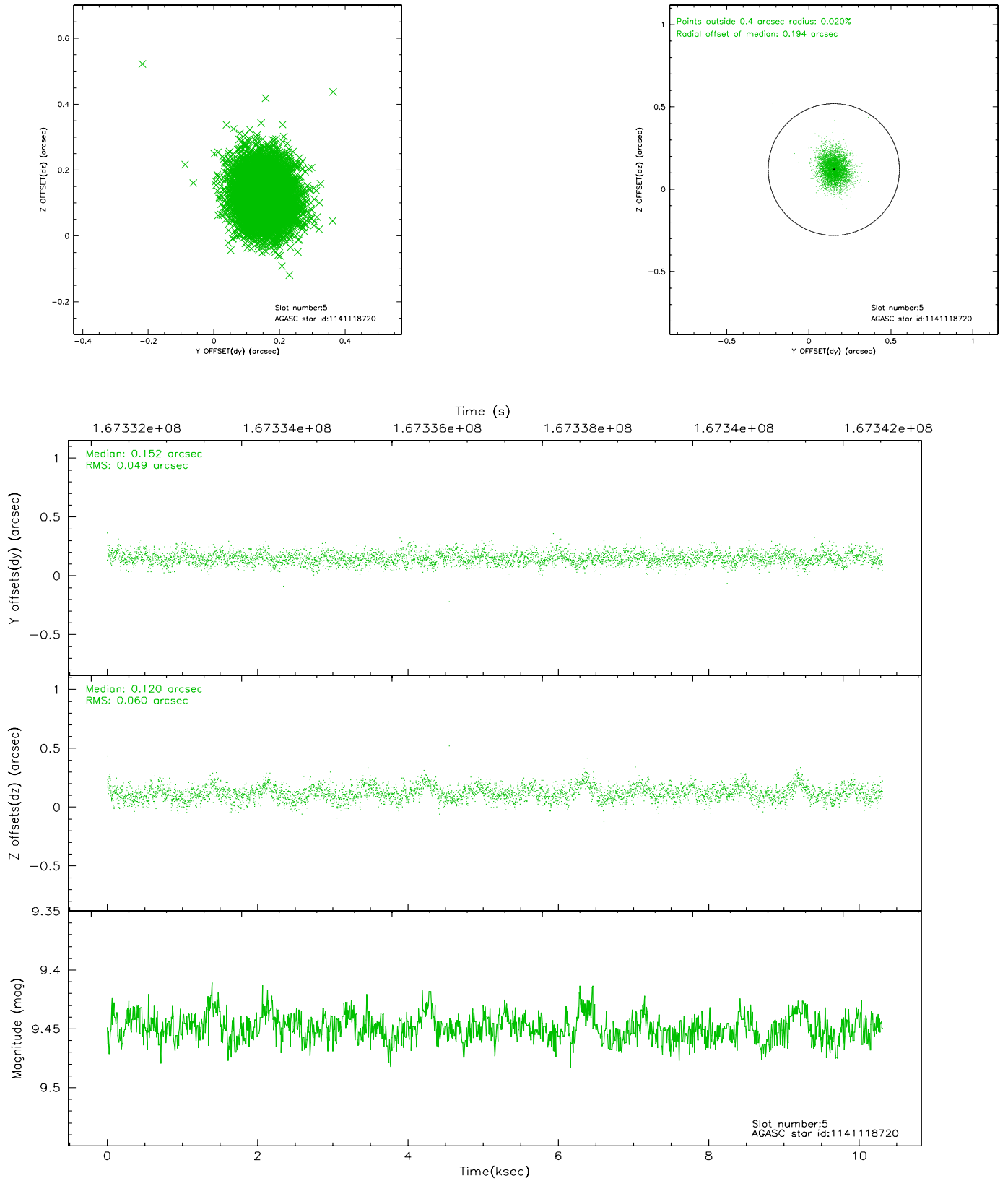
2.4.1 Slot 3



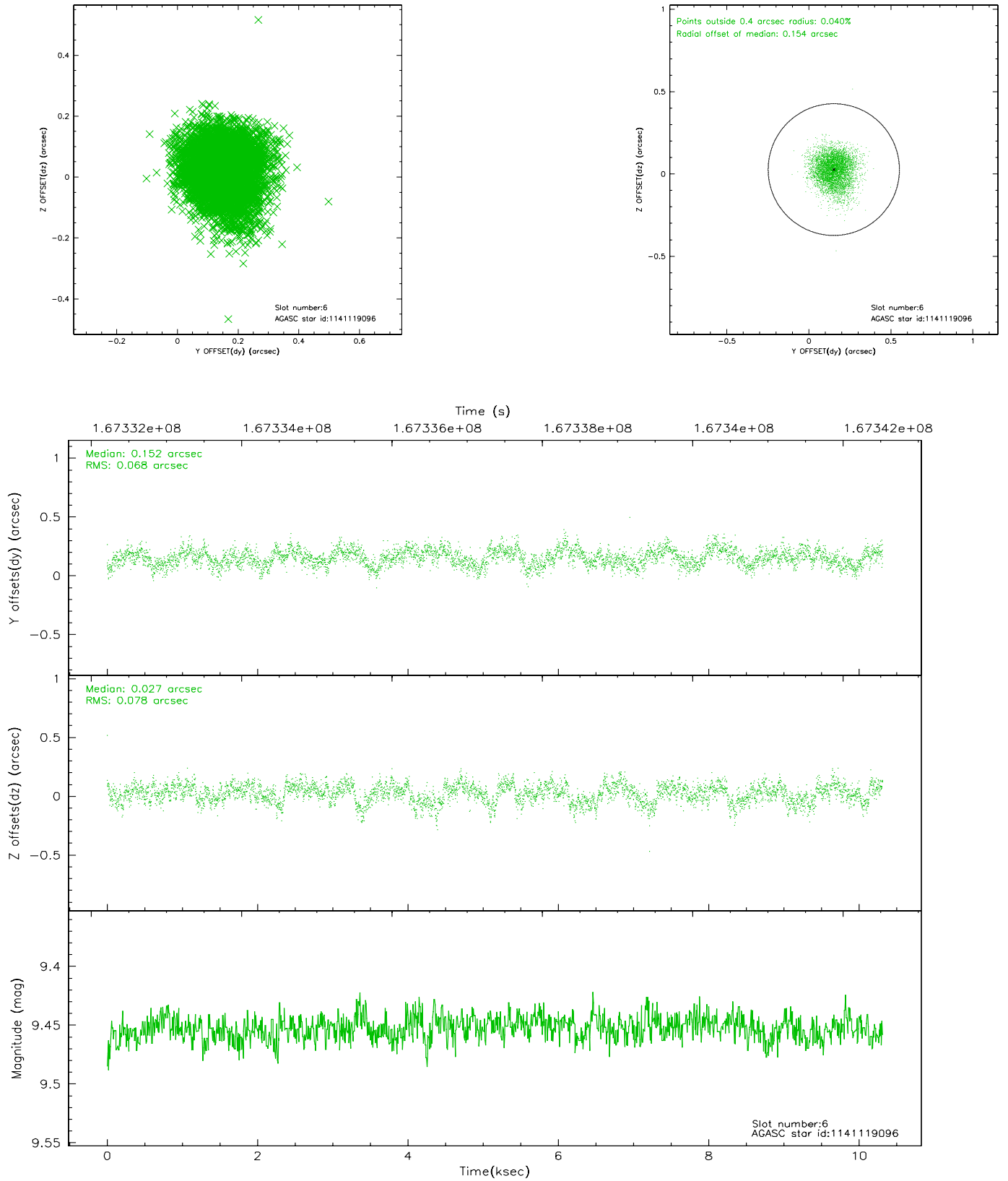
2.4.2 Slot 4



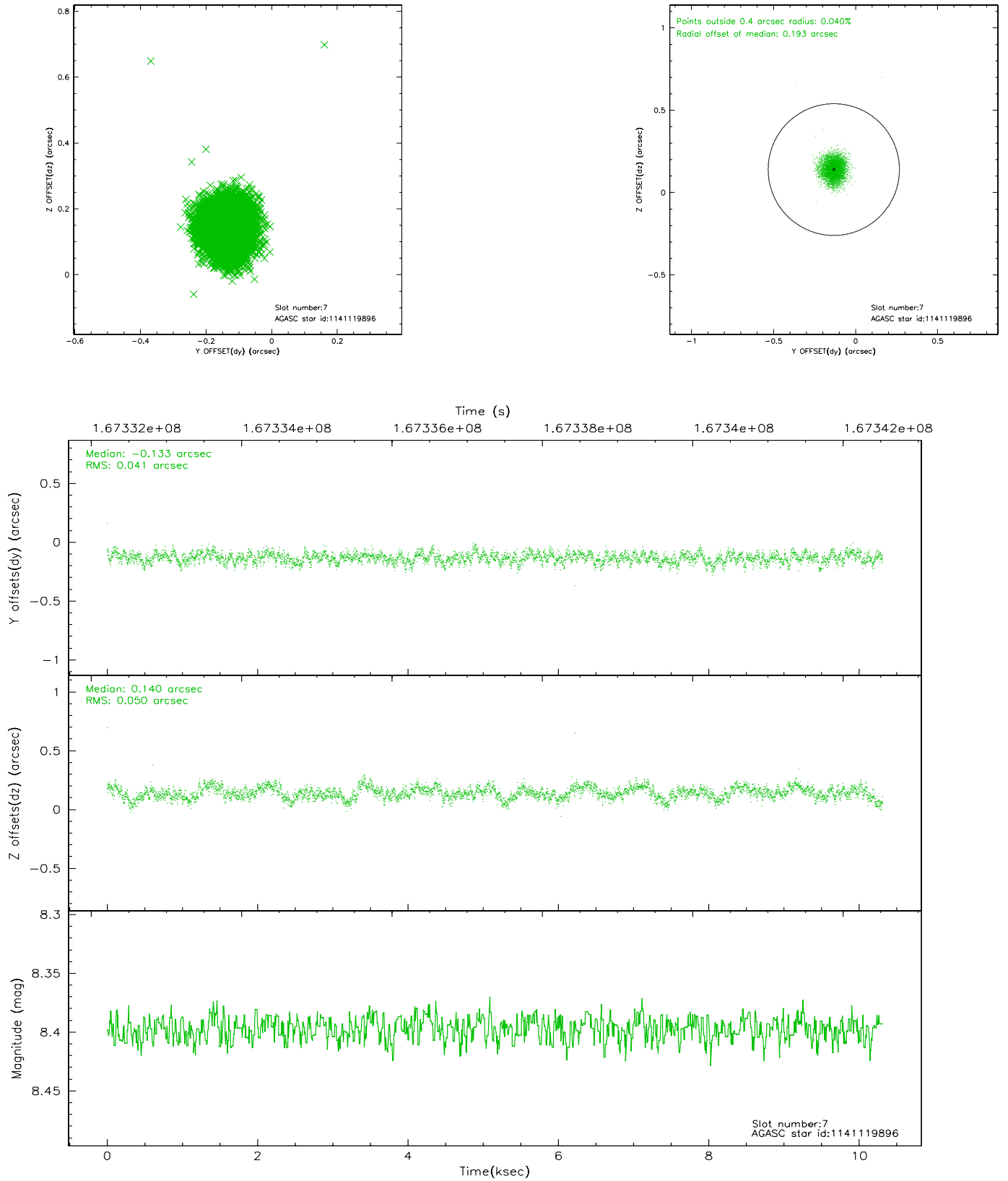
2.4.3 Slot 5



2.4.4 Slot 6

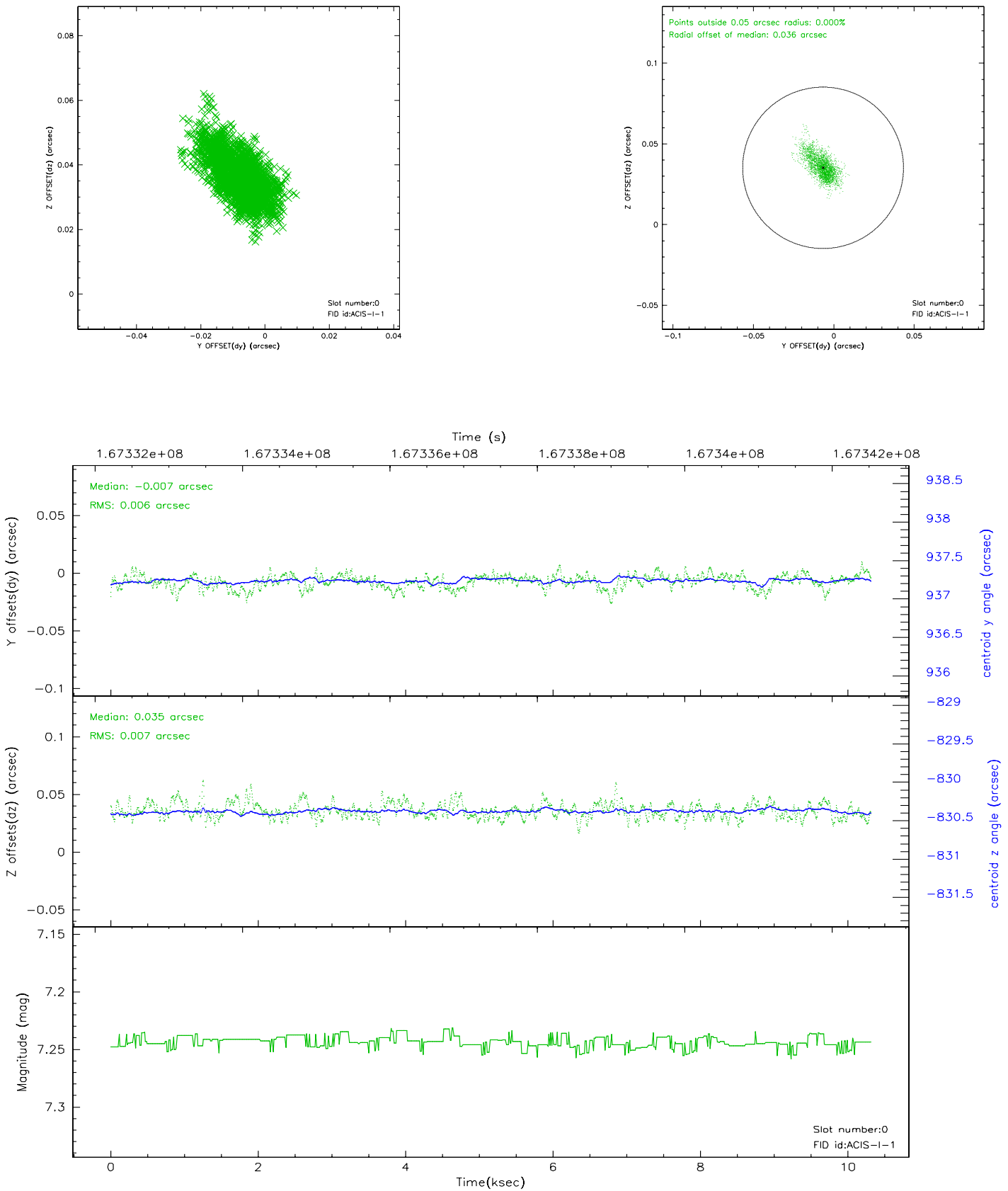


2.4.5 Slot 7

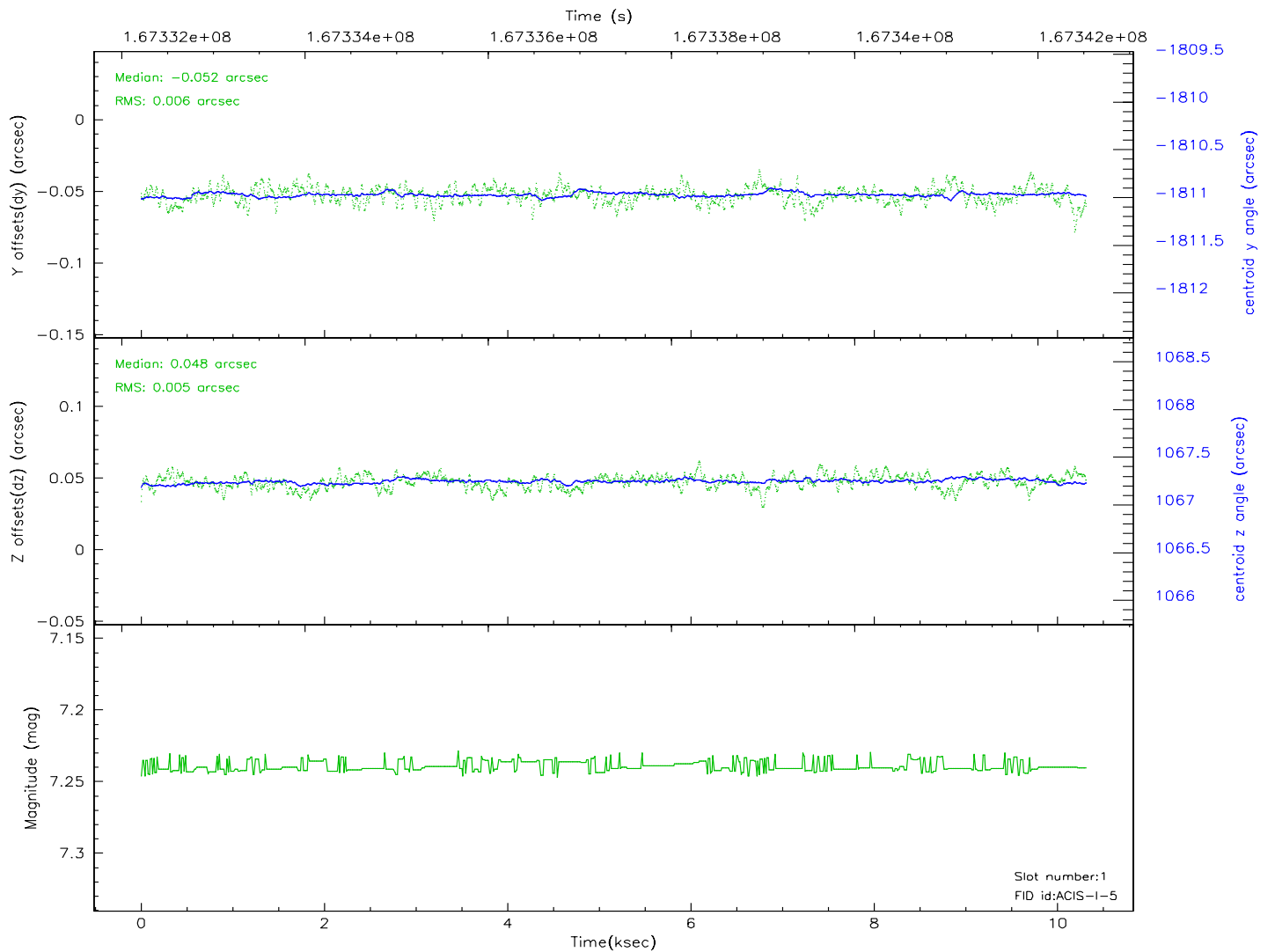
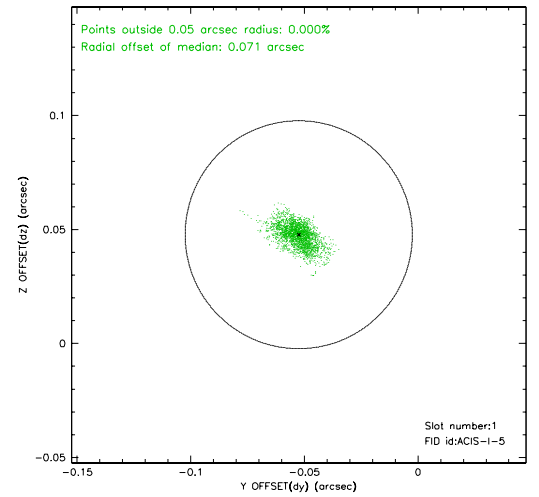
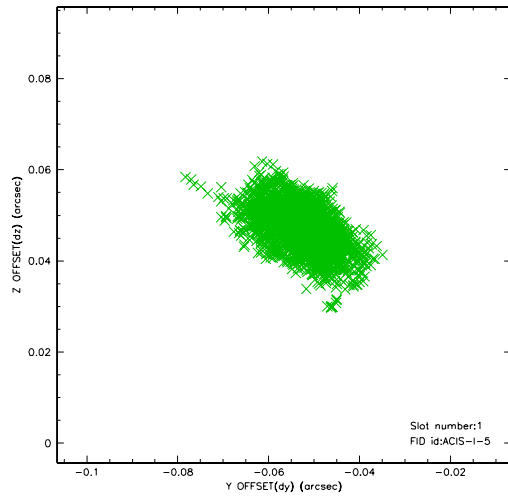


2.5 FID Slots

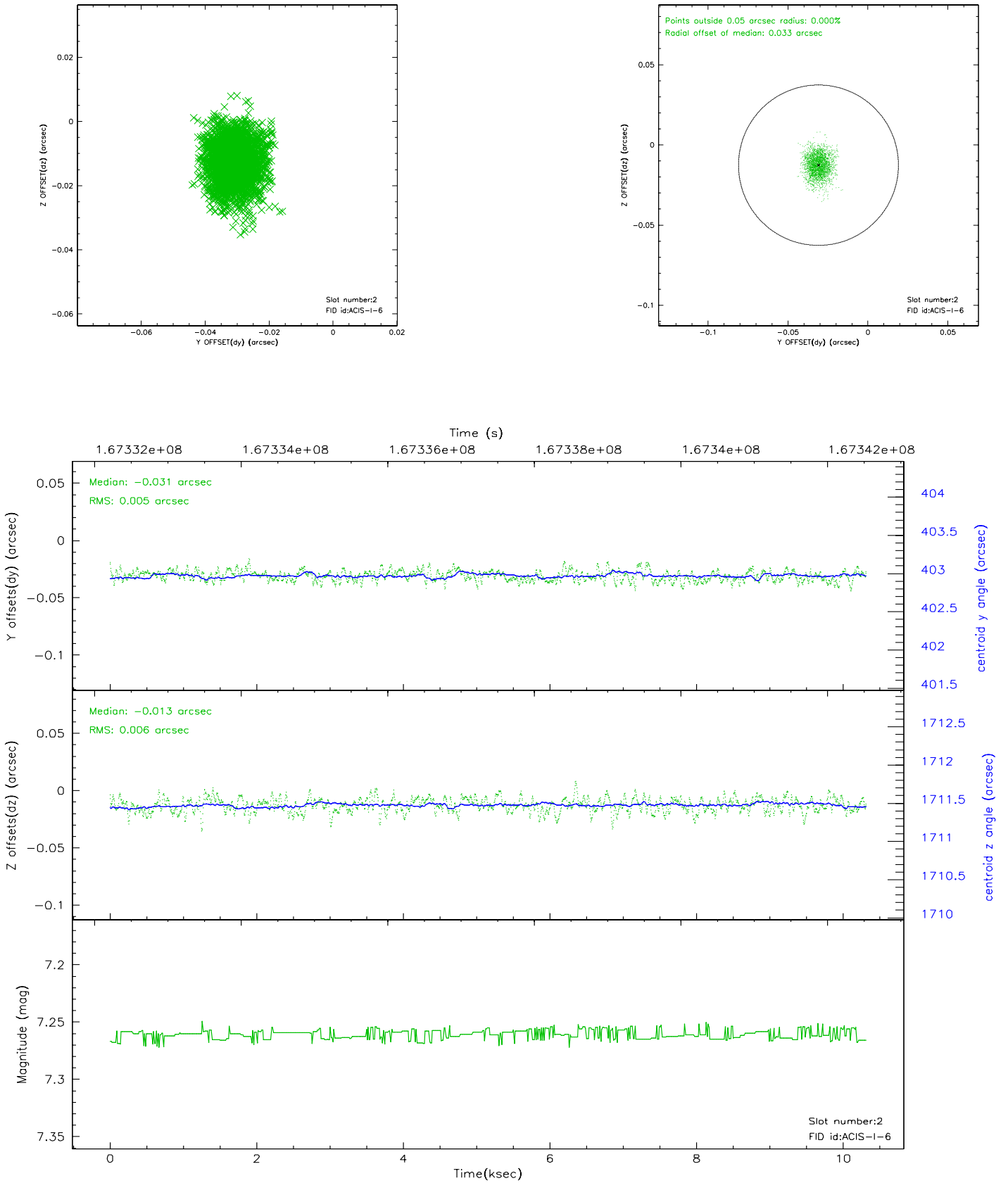
2.5.1 Slot 0



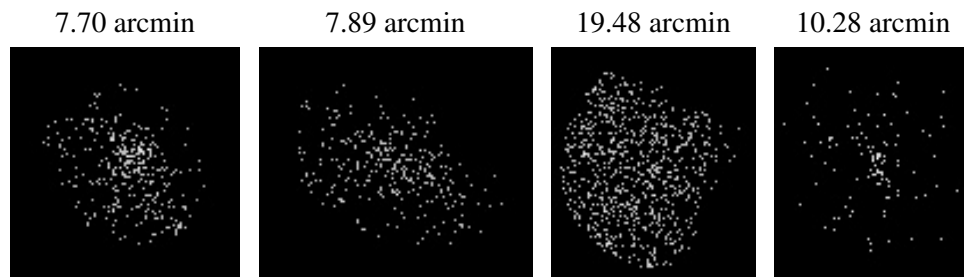
2.5.2 Slot 1



2.5.3 Slot 2



3 Point Sources



A Summary

A.1 Status

V&V Scientist	Beth Sundheim
V&V Date (YYYY-MM-DD)	2006.08.06
V&V Edition	1
V&V Disposition and Status	OK
V&V Charge Time	9.59

A.2 Comments