

V&V Reference Report

L2 ASCDS Version : 8.4.5

Observation 3795 - L2 Version 3
Chandra X-Ray Center

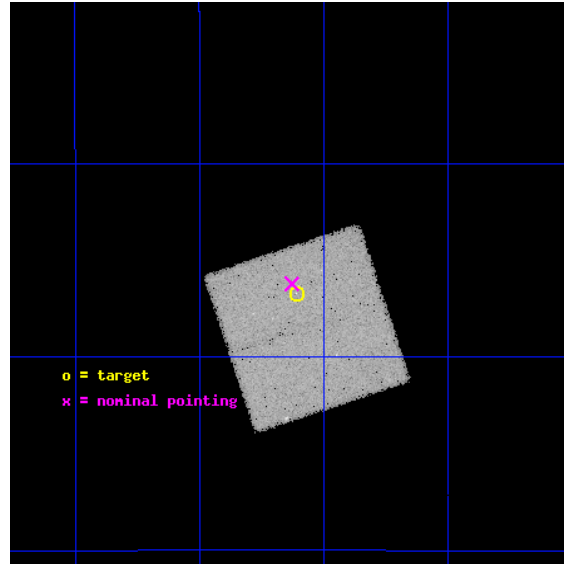
L2 Processing Date : Oct 27 2012

Contents

1	Front	2
2	OBI	3
2.1	OBI	3
2.1.1	Images	3
2.1.2	Bias	3
2.1.3	Parameters	4
2.1.4	Events	4
2.2	Compared Parameters	5
2.3	Aspect	6
2.4	Star Slots	9
2.4.1	Slot 3	9
2.4.2	Slot 4	10
2.4.3	Slot 5	11
2.4.4	Slot 6	12
2.4.5	Slot 7	13
2.5	FID Slots	14
2.5.1	Slot 0	14
2.5.2	Slot 1	15
2.5.3	Slot 2	16
A	Summary	17
A.1	Status	17
A.2	Comments	17

1 Front

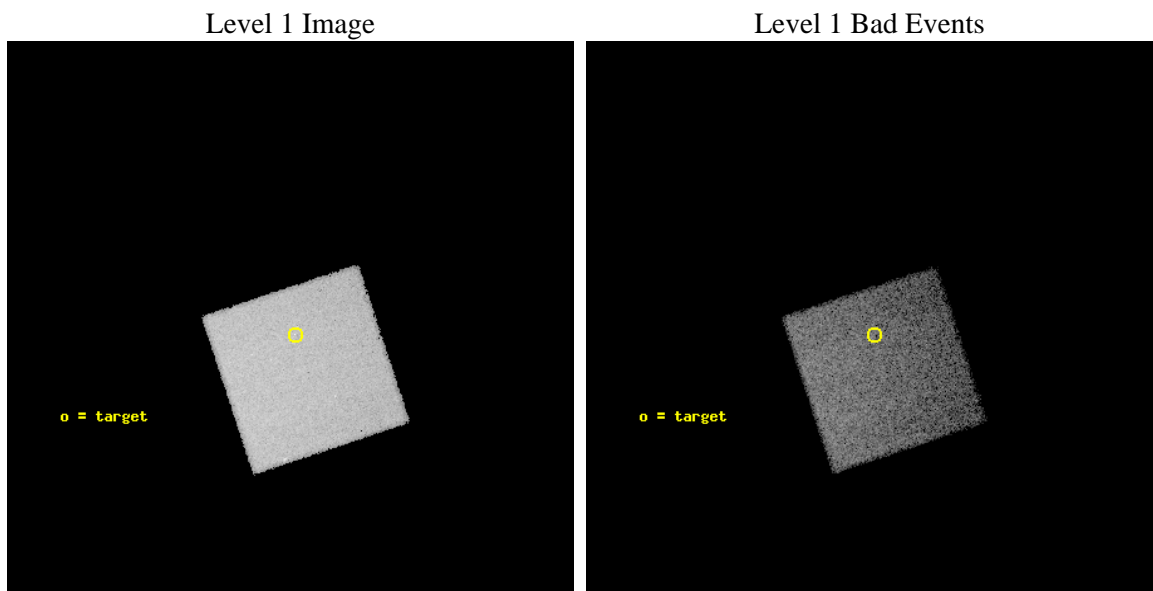
seq_num	400282	Sequence number
obs_id	3795	Observation id
title	MONITORING TWO QUASI-PERSISTENT X-RAY BINARIES IN QUIESCENCE	Propo
observer	Dr. Rudy Wijnands	Principal investigator
object	MXB 1659-298	Source name
dtcycle	0	
cycle	P	events from which exps? Prim/Second/Both
ra_targ	255.526667	Observer's specified target RA [deg]
dec_targ	-29.945639	Observer's specified target Dec [deg]
ra_nom	255.53196544107	Nominal RA [deg]
dec_nom	-29.937173213174	Nominal Dec [deg]
roll_nom	71.611005873983	Nominal Roll [deg]
revision	3	Processing version of data
ontime	27509.959029764	Sum of GTIs [s]
livetime	27138.701591986	Livetime [s]
ontime7	27509.959029764	Sum of GTIs [s]
l2events	95548	Number of level 2 events



2 OBI

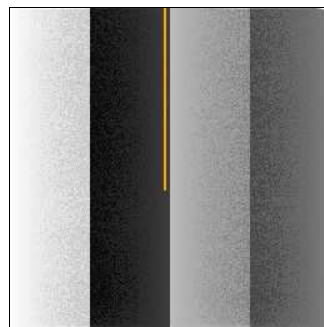
2.1 OBI

2.1.1 Images



2.1.2 Bias

Chip 7



2.1.3 Parameters

obi_num	1	Obi number	sched_exp_time	27000.000000	[s] Scheduled observation exposure time
ascdsver	8.4.5	Processing system revision	ontime	27509.959029764	Sum of GTIs [s]
caldsver	4.5.2	 	ontime7	27509.959029764	Sum of GTIs [s]
date	2012-10-27T17:29:05	Date and time of file creation	l1events	223989	Number of level 1 events
revision	3	Processing version of data			

2.1.4 Events

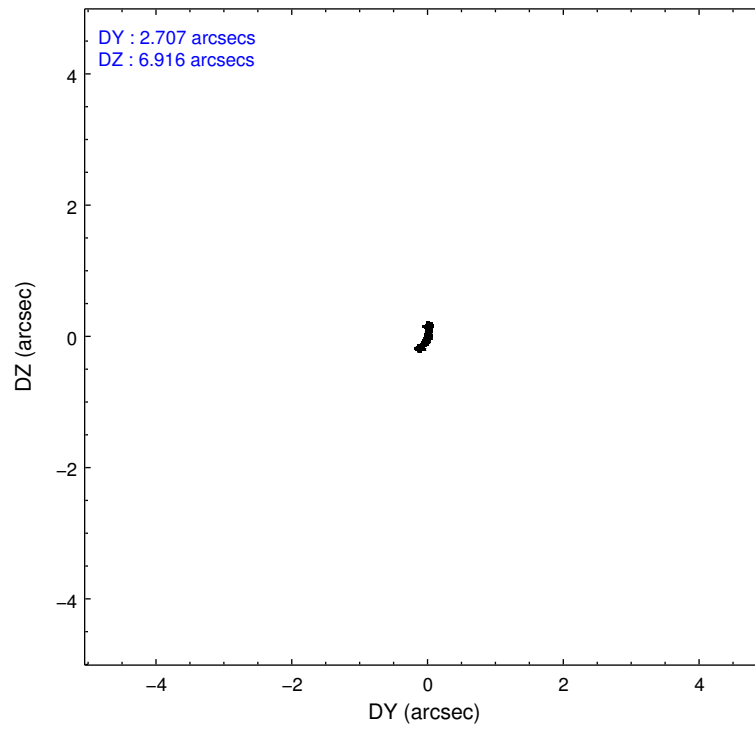
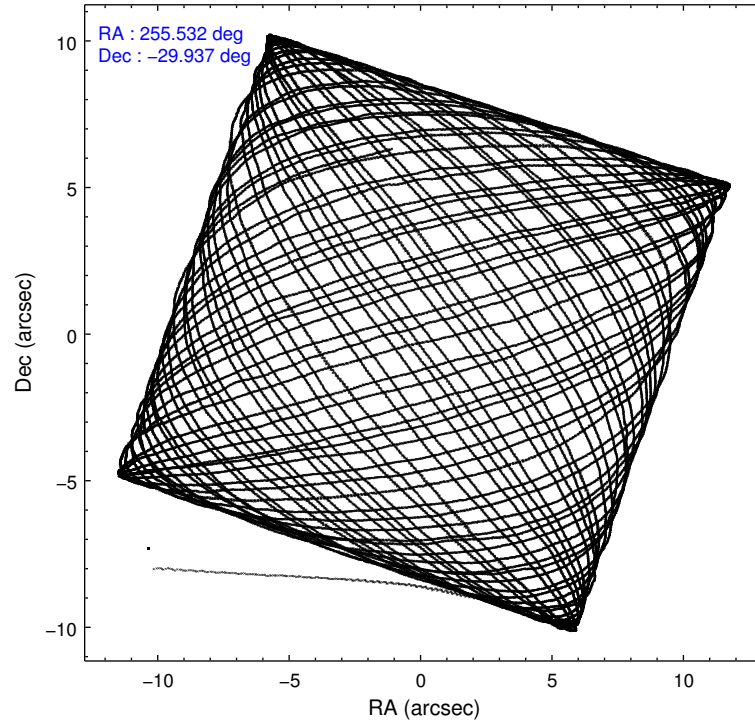
	ccd 7
level 1 events	223989
rejected events	126145
rejected %	56%

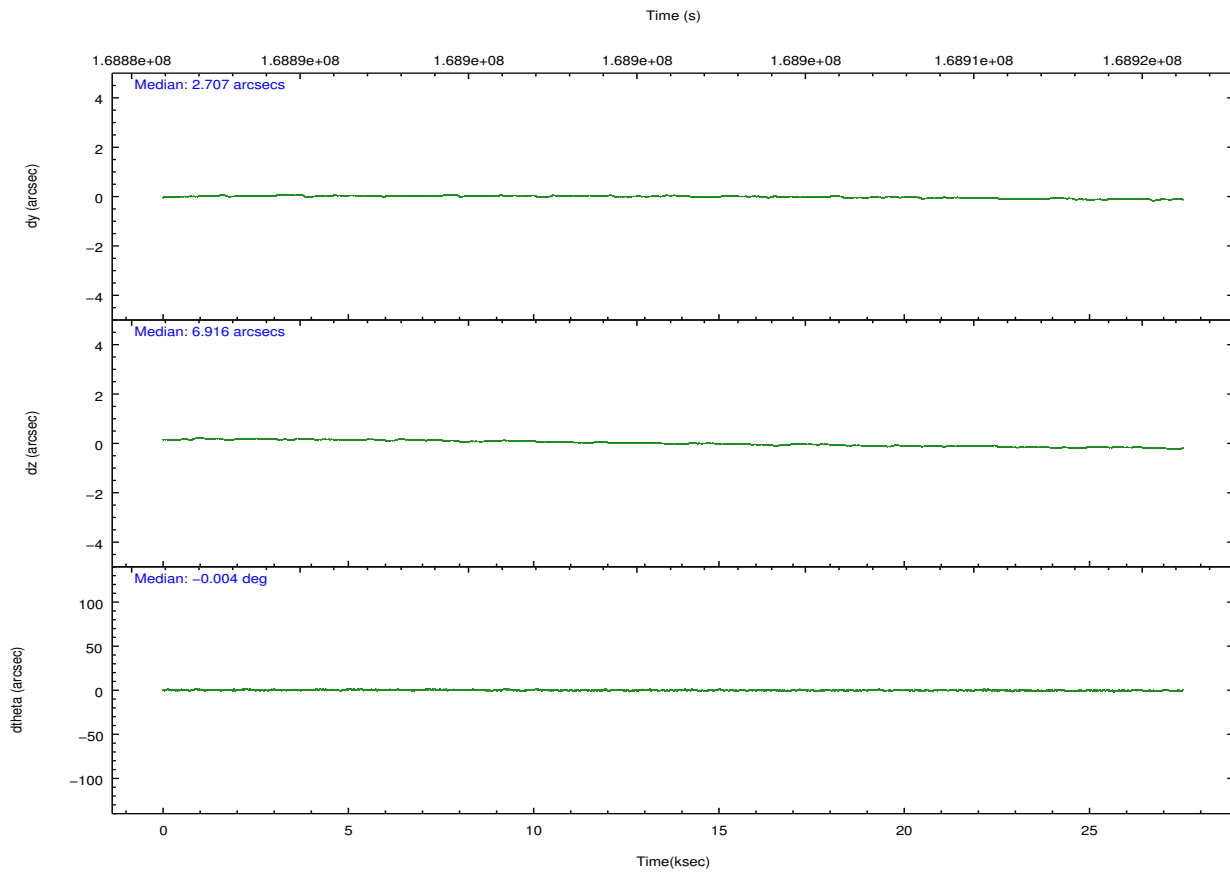
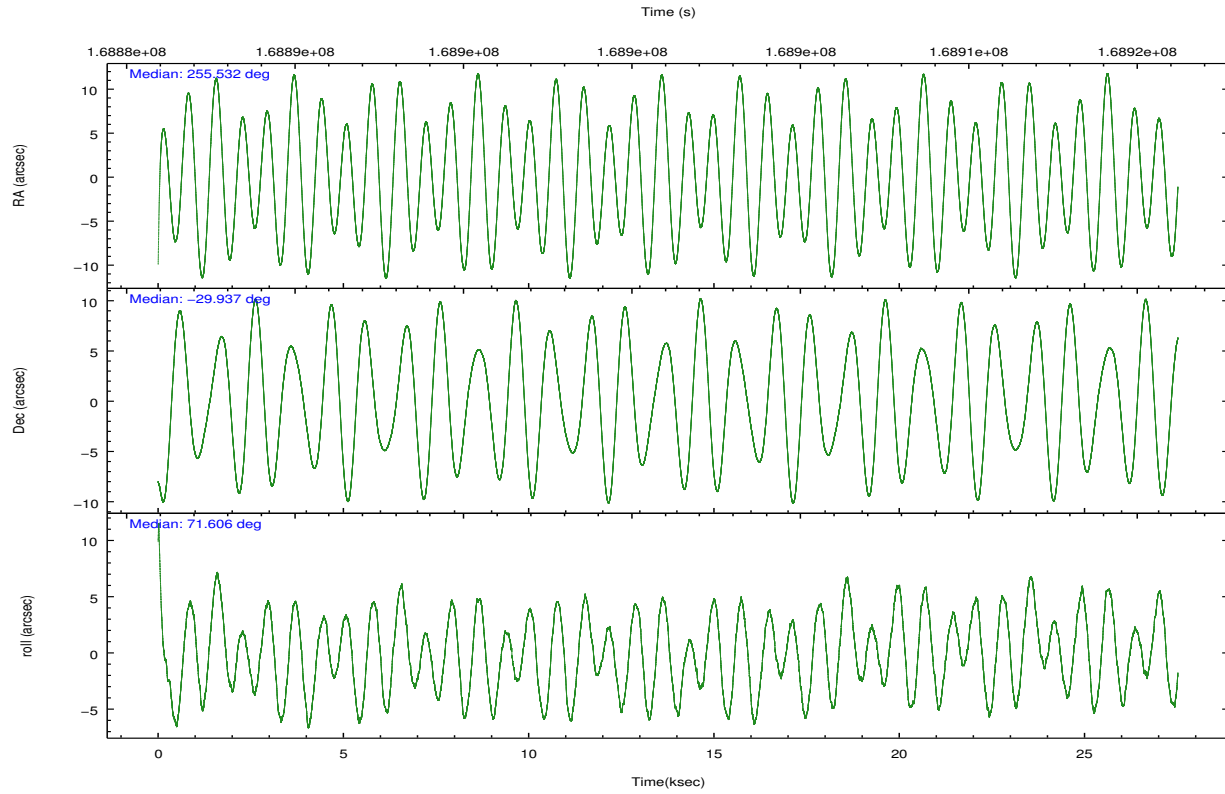
	ccd 7
grade 0 events	10204
	4%
grade 1 events	168
	0%
grade 2 events	19655
	8%
grade 3 events	9034
	4%
grade 4 events	8992
	4%
grade 5 events	20788
	9%
grade 6 events	50162
	22%
grade 7 events	104986
	46%

2.2 Compared Parameters

Parameter	Planned	Actual	Parameter	Planned	Actual
Instrument	ACIS	ACIS	Obspar format version number	7	7
Detector	ACIS-7	ACIS-7	Obspar file type	PREDICTED	ACTUAL
Grating	NONE	NONE	Obspar update status	NONE	UPDATED
Data mode	FAINT	FAINT	Number of optional ACIS chips dropped	0	0
Observation mode	POINTING	POINTING	On-chip summing requested	N	N
[deg] Pointing RA	255.538739	255.5319654410689	Subarray requested	NONE	NONE
[deg] Pointing Dec	-29.963736	-29.93717321317359	Alternating exposures requested	N	N
[deg] Pointing Roll	71.457757	71.61100587398296	[s] Primary exposure time	0.000000	3
[mm] SIM focus pos	-0.684267	-0.6828225247311905			
[mm] SIM defocus	0	0.001444936568705701			
[mm] SIM translation stage pos	-190.132523	-190.1400660498719			
[mm] SIM translation stage offset	0	0.00754346686406393			
[s] Observation start time (MET)	168887832.184000	168886700.94766			
Observation start date	2003-05-09T17:16:08	2003-05-09T16:58:20			
[s] Observation end time (MET)	168914832.184000	168915324.58637			
Observation end date	2003-05-10T00:46:08	2003-05-10T00:55:24			
Read mode	TIMED	TIMED			

2.3 Aspect



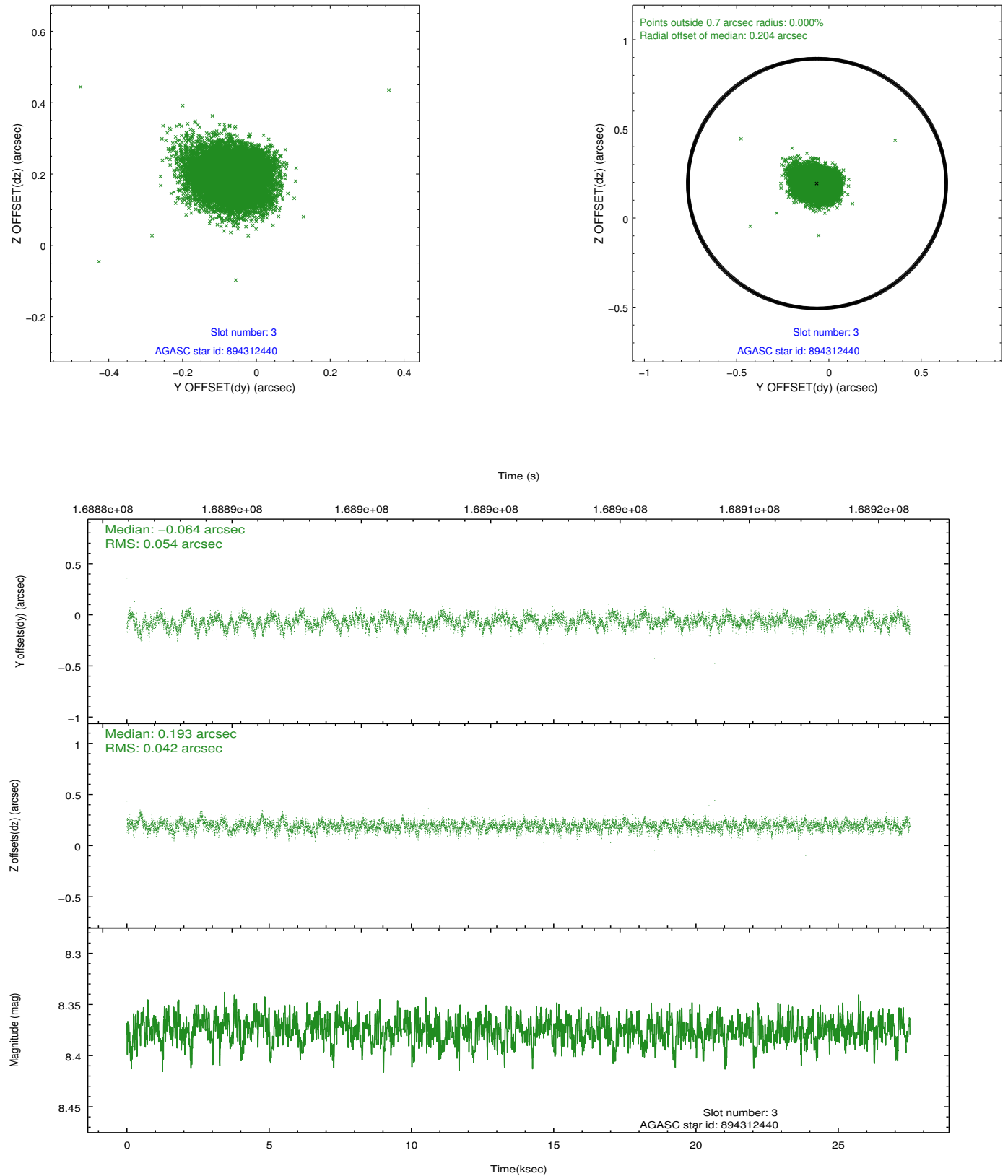


Slot Statistics

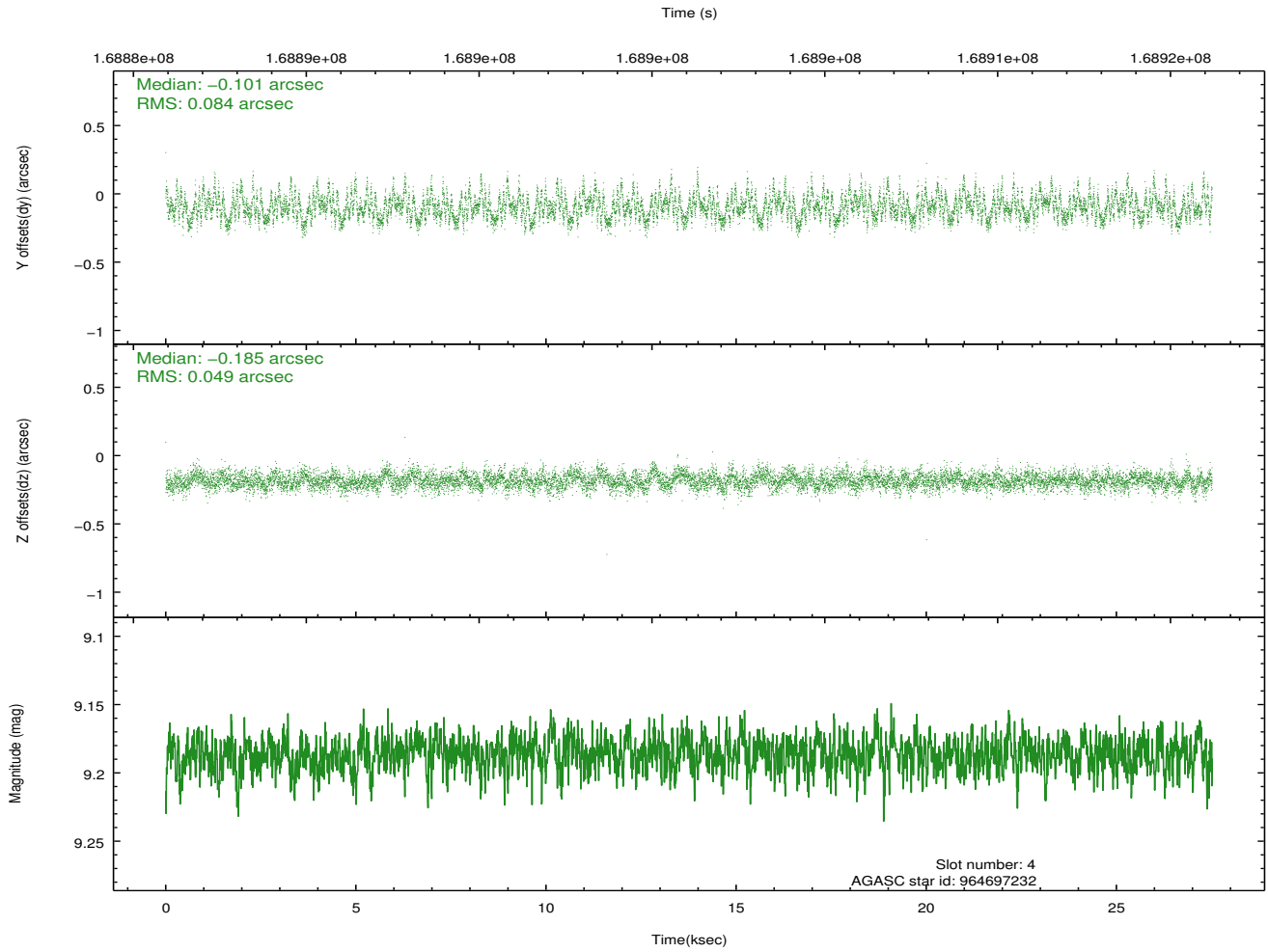
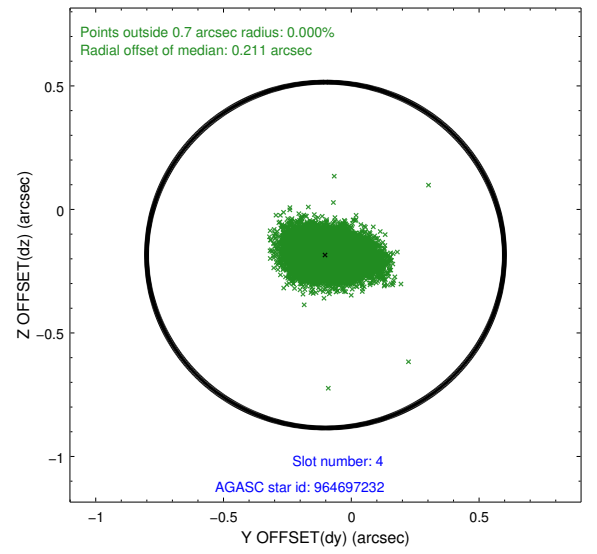
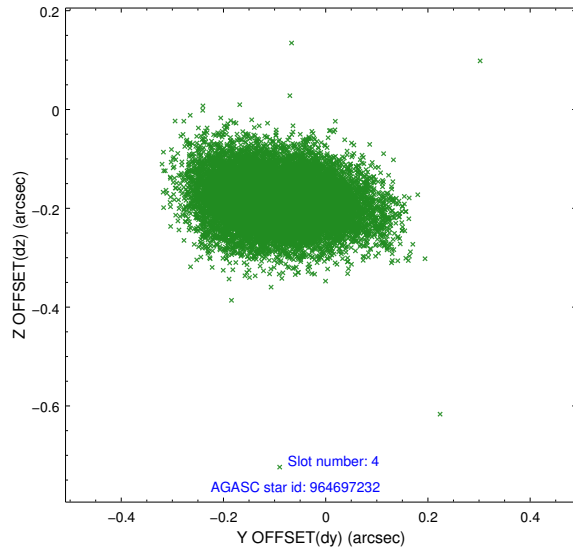
slot	status	id	mag	n_pts	med_dy	med_dz	dr1	dr2	ra	dec	mean_y	mean_z
0	FID	ACIS-S-2	7.11	6711	-0.030	-0.020	0.007	0.013	0.000000	0.000000	-755.34	-1728.11
1	FID	ACIS-S-4	7.20	6711	0.015	0.014	0.007	0.011	0.000000	0.000000	2157.92	180.33
2	FID	ACIS-S-6	7.35	6710	-0.012	0.013	0.008	0.013	0.000000	0.000000	406.76	817.82
3	GUIDE	894312440	8.38	13418	-0.064	0.193	0.073	0.118	256.267206	-29.720309	1548.61	-1882.53
4	GUIDE	964697232	9.19	13421	-0.101	-0.185	0.102	0.173	254.697519	-30.172036	-1552.70	2240.28
5	GUIDE	894191616	9.48	13418	0.096	-0.162	0.110	0.175	254.985496	-29.335021	1589.79	2364.87
6	GUIDE	964691944	9.43	13417	0.078	0.065	0.106	0.163	255.940849	-30.671472	-2021.20	-1991.36
7	GUIDE	964690104	8.90	13420	-0.003	0.090	0.079	0.134	256.020184	-30.783001	-2325.63	-2350.97

2.4 Star Slots

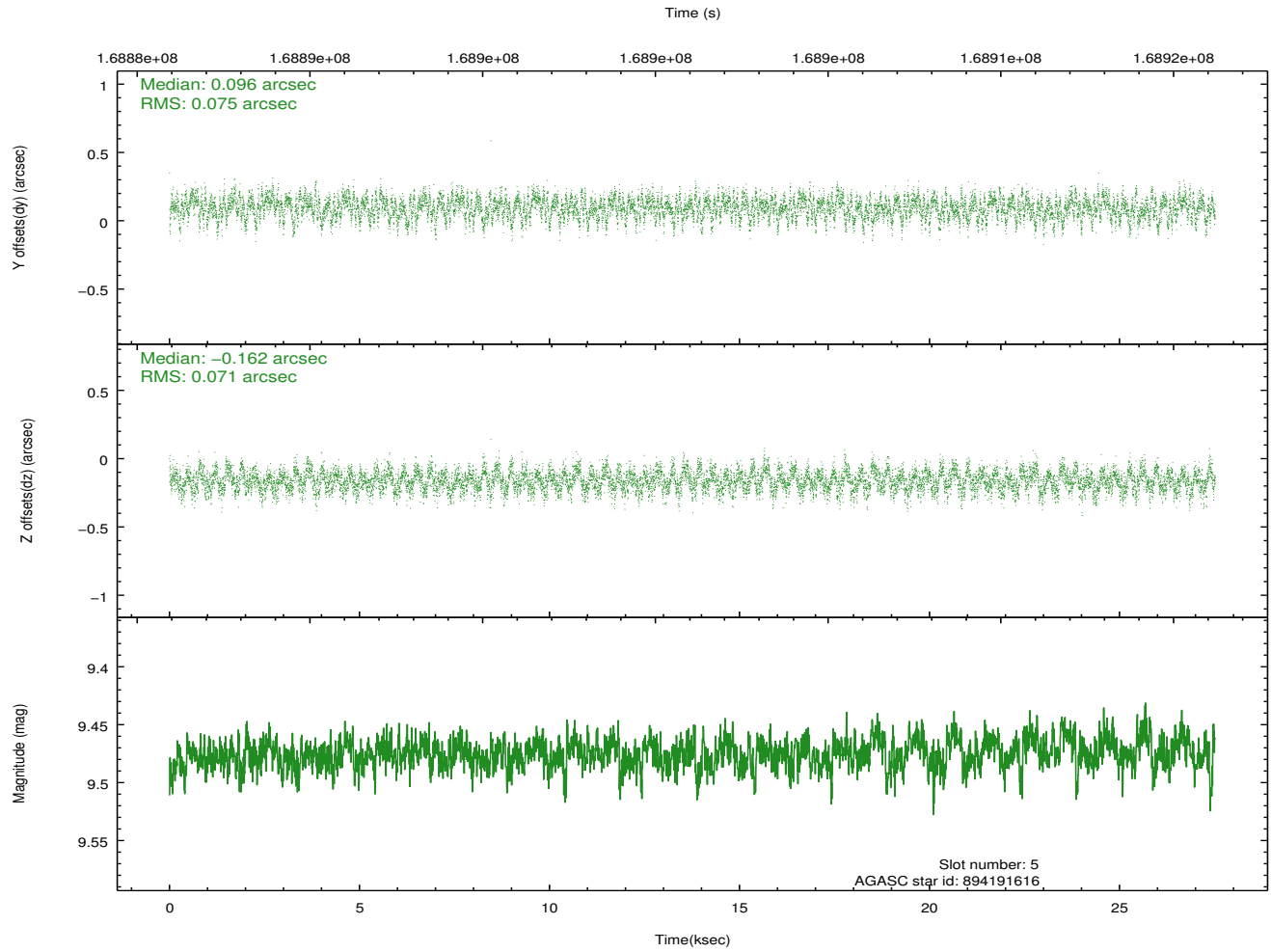
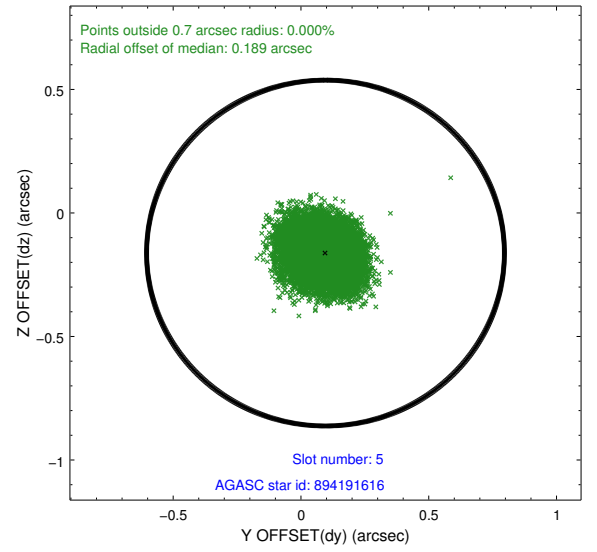
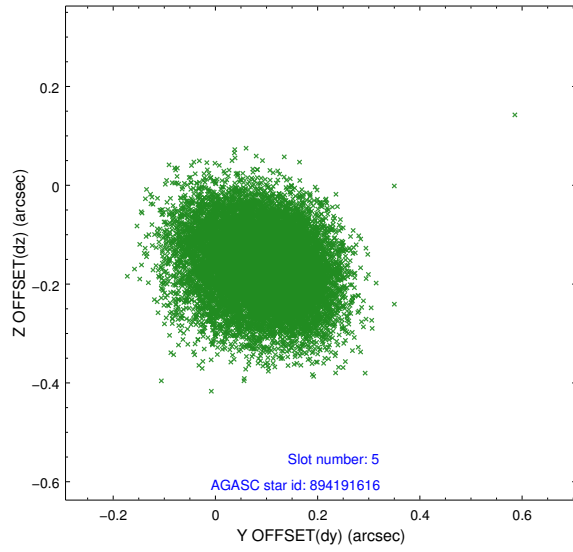
2.4.1 Slot 3



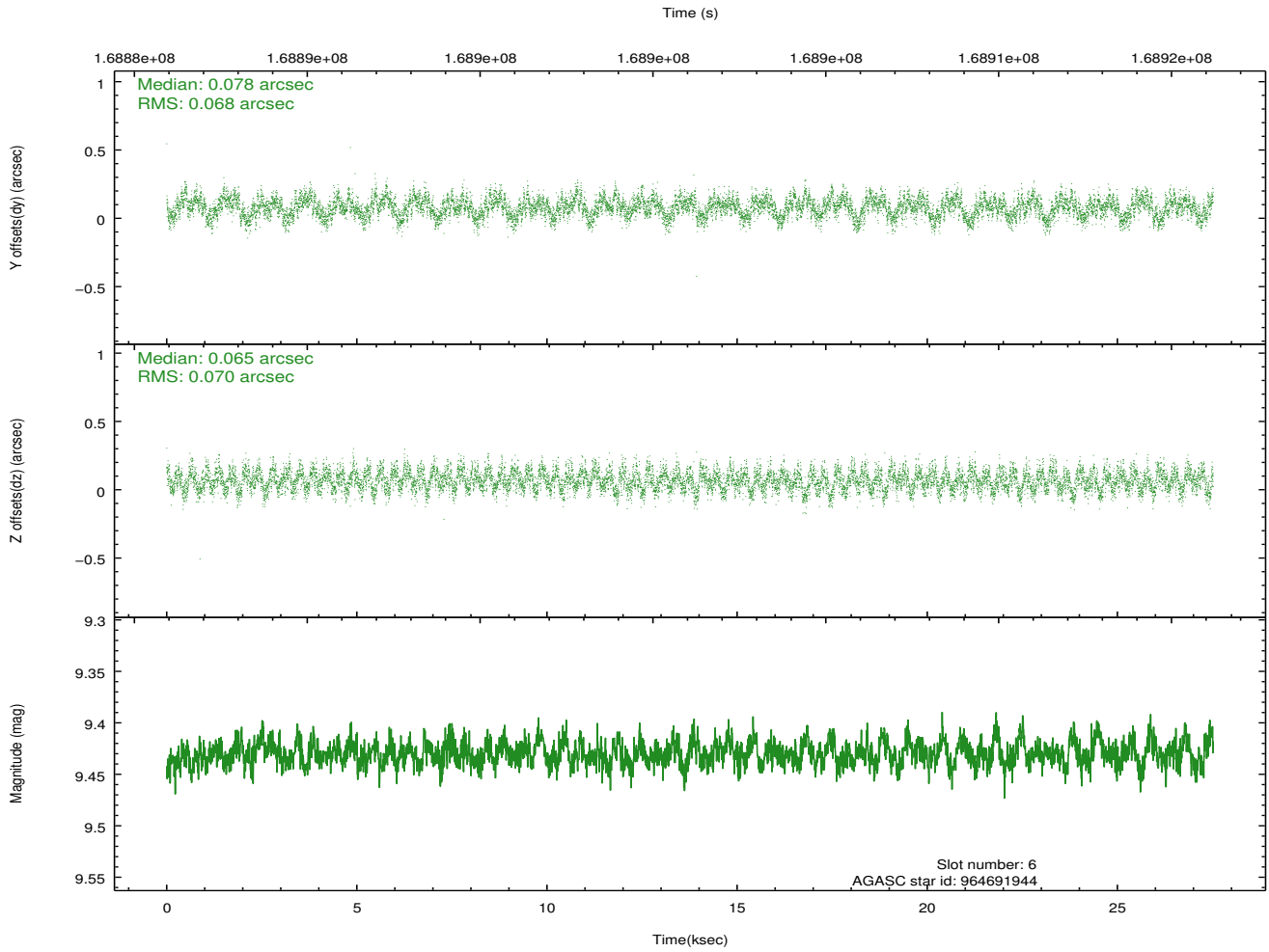
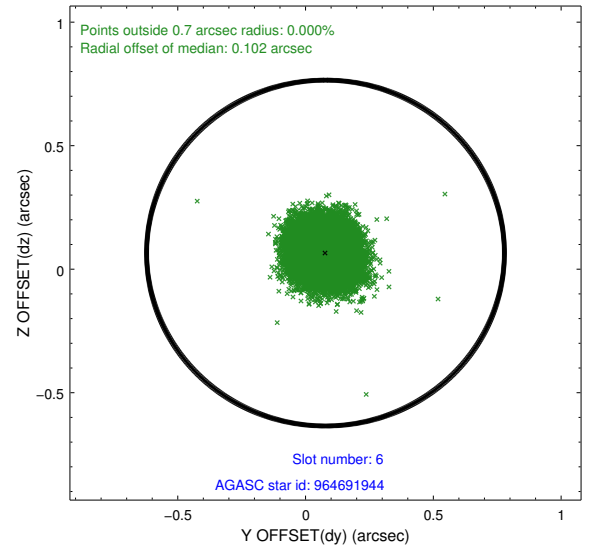
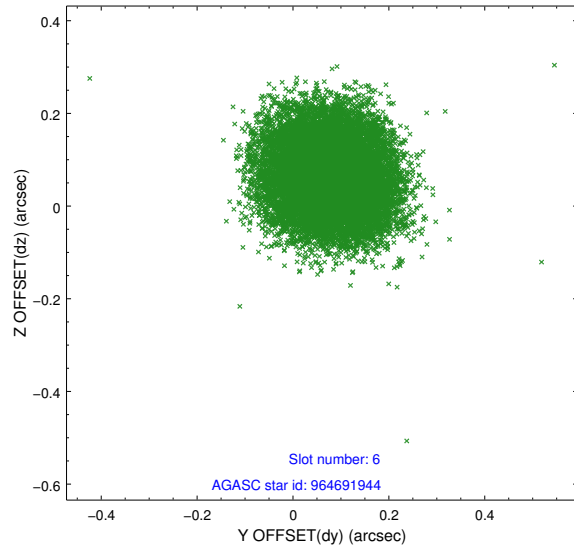
2.4.2 Slot 4



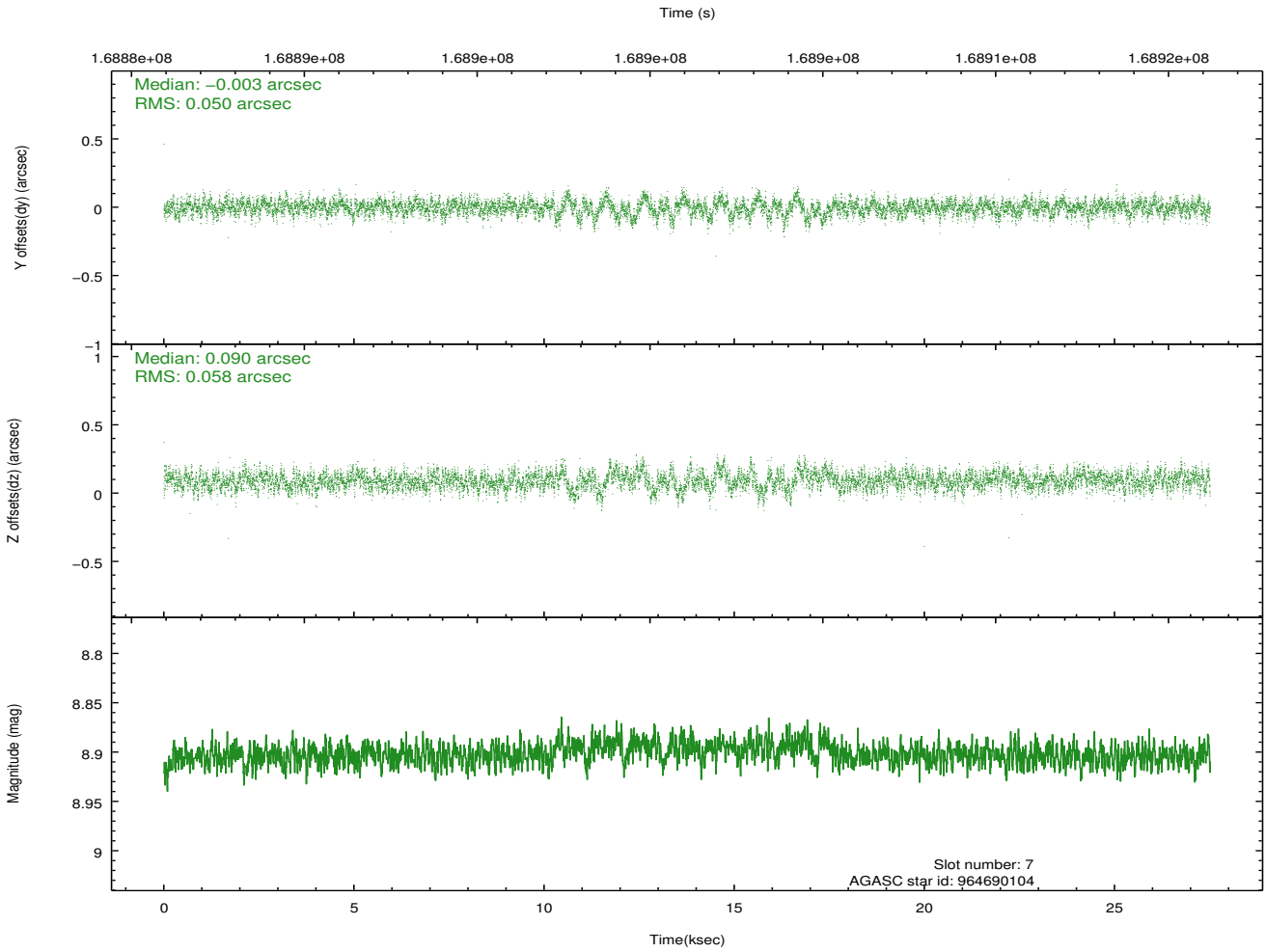
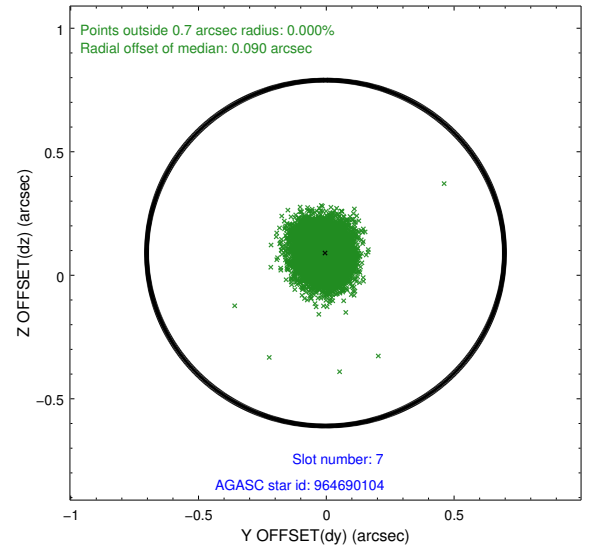
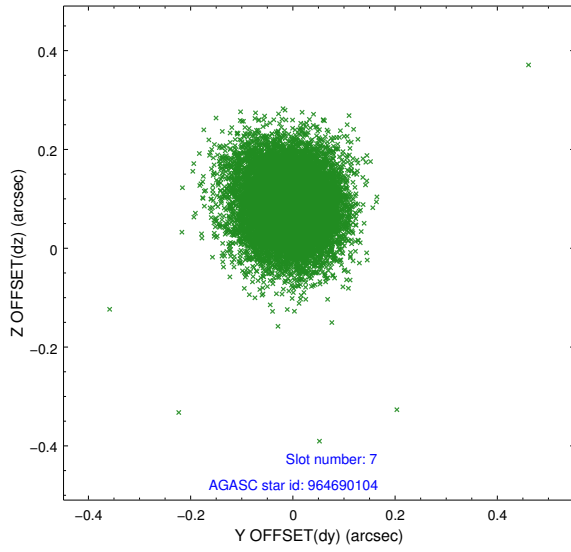
2.4.3 Slot 5



2.4.4 Slot 6

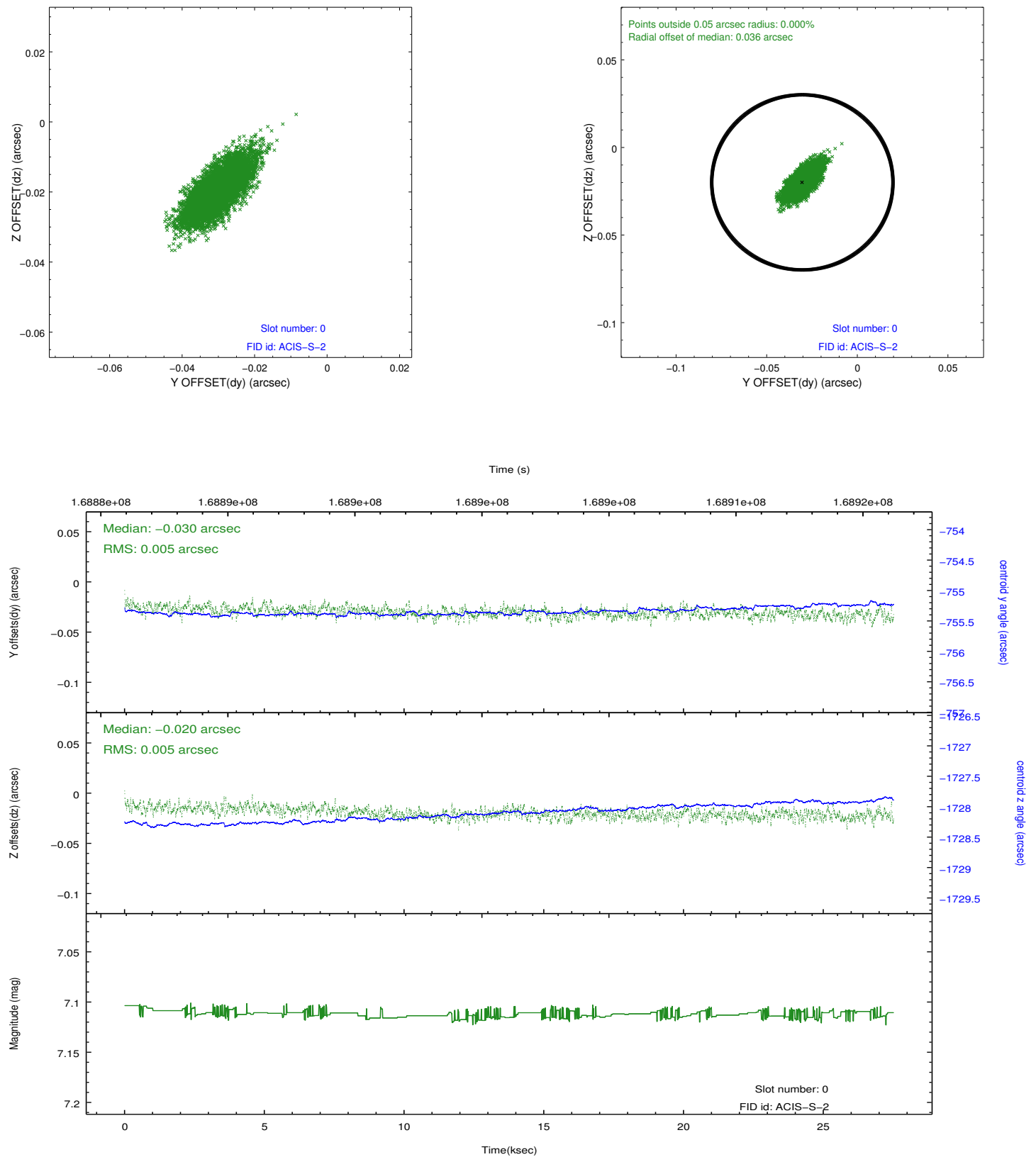


2.4.5 Slot 7

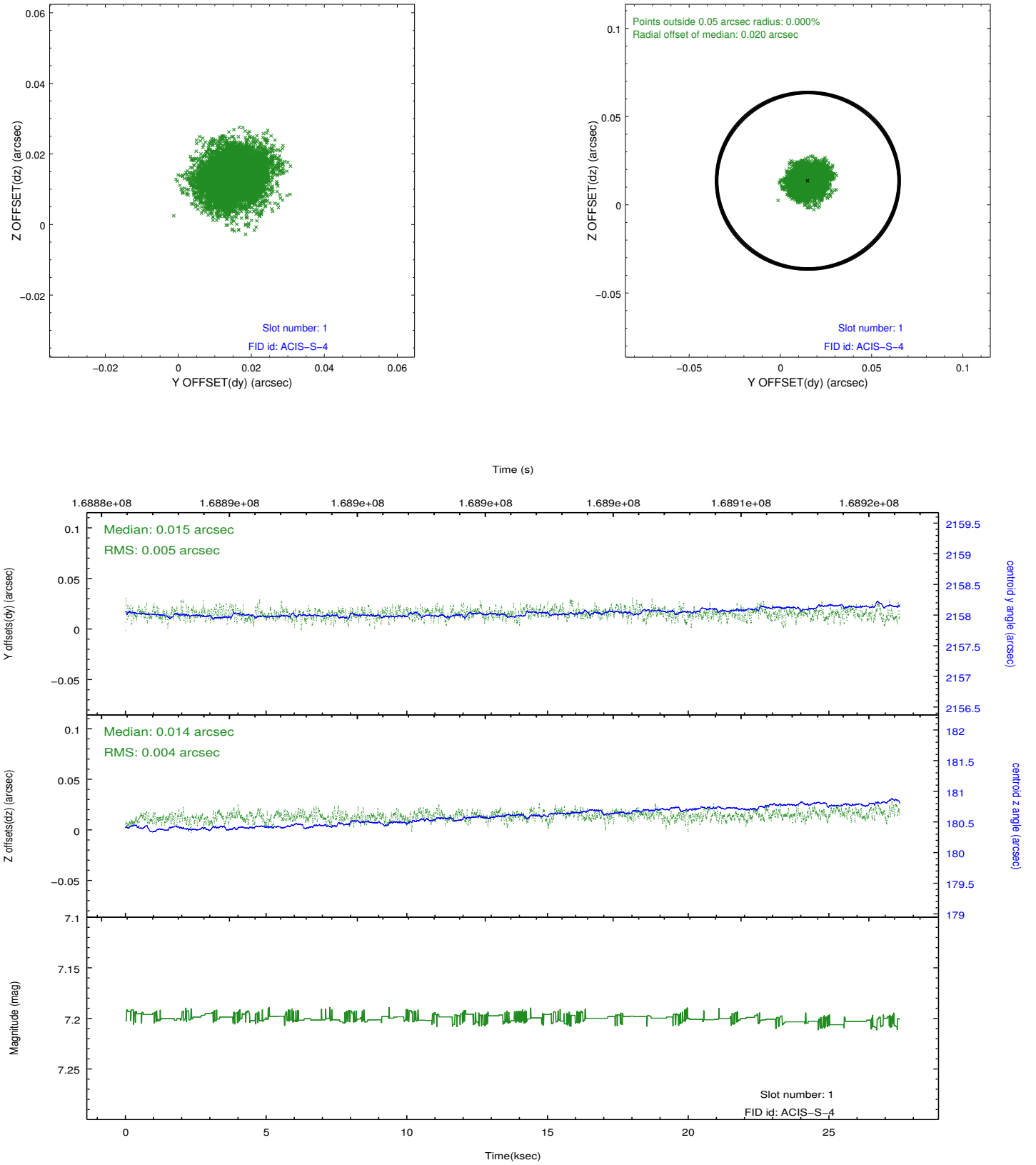


2.5 FID Slots

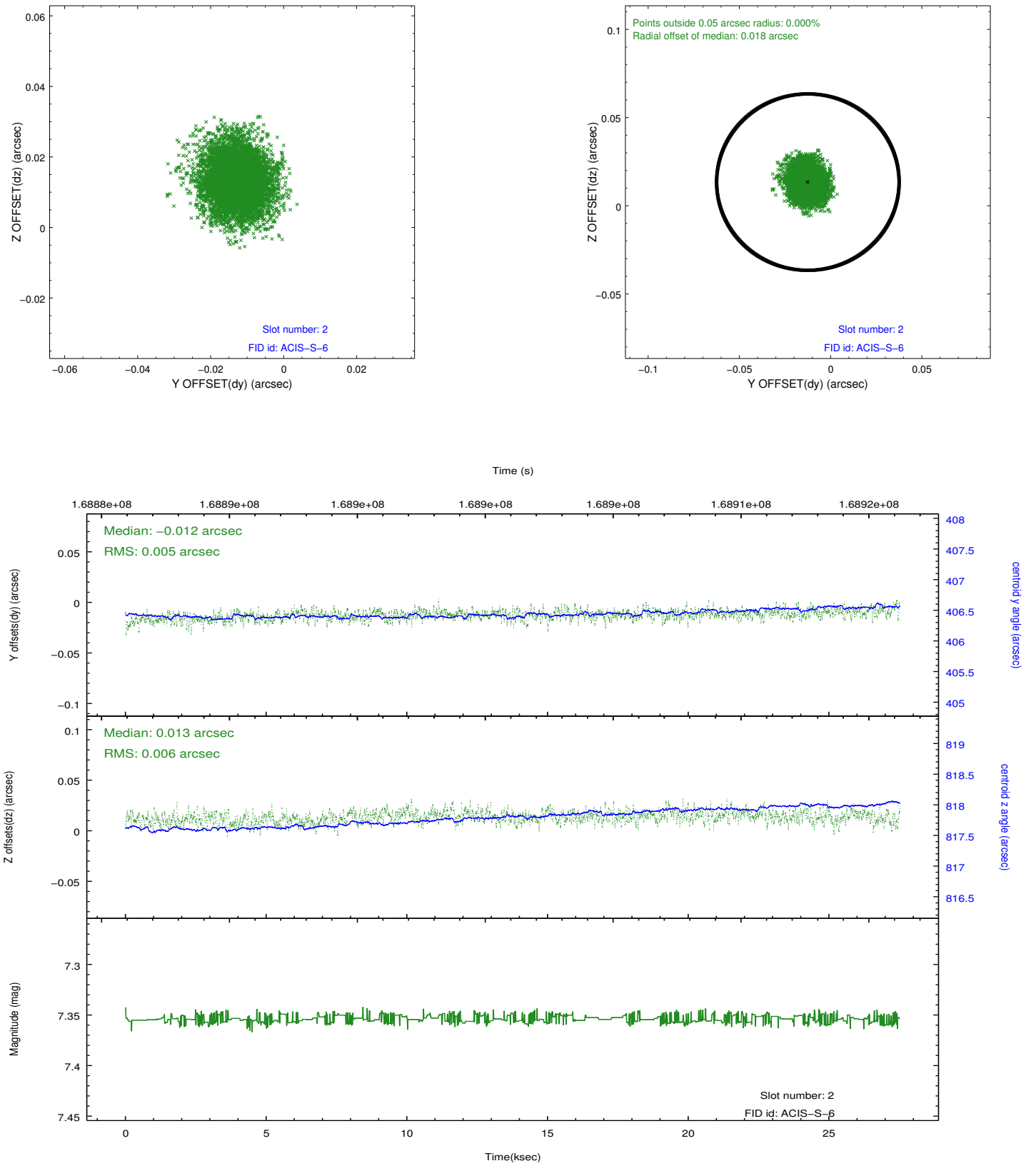
2.5.1 Slot 0



2.5.2 Slot 1



2.5.3 Slot 2



A Summary

A.1 Status

V&V Scientist	Beth Sundheim
V&V Date (YYYY-MM-DD)	2012.11.14
V&V Edition	1
V&V Disposition and Status	OK
V&V Charge Time	27.509

A.2 Comments