

# V&V Reference Report

## L2 ASCDS Version : 8.4.5

Observation 3784 - L2 Version 3  
Chandra X-Ray Center

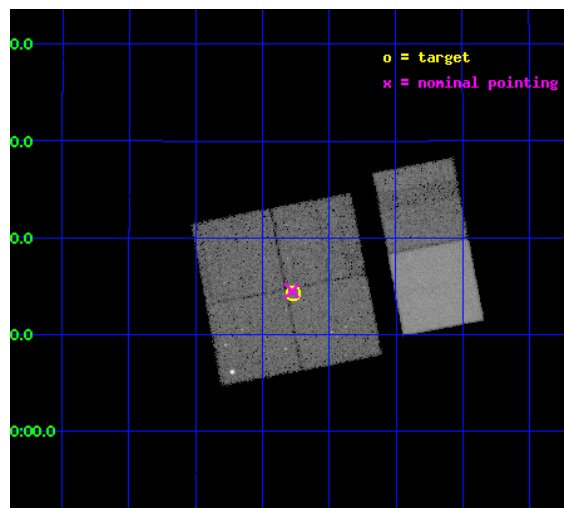
L2 Processing Date : Oct 19 2012

## Contents

<b>1</b>	<b>Front</b>	<b>2</b>
<b>2</b>	<b>OBI</b>	<b>3</b>
2.1	OBI . . . . .	3
2.1.1	Images . . . . .	3
2.1.2	Bias . . . . .	3
2.1.3	Parameters . . . . .	4
2.1.4	Events . . . . .	4
2.2	Compared Parameters . . . . .	5
2.3	Aspect . . . . .	6
2.4	Star Slots . . . . .	9
2.4.1	Slot 3 . . . . .	9
2.4.2	Slot 4 . . . . .	10
2.4.3	Slot 5 . . . . .	11
2.4.4	Slot 6 . . . . .	12
2.4.5	Slot 7 . . . . .	13
2.5	FID Slots . . . . .	14
2.5.1	Slot 0 . . . . .	14
2.5.2	Slot 1 . . . . .	15
2.5.3	Slot 2 . . . . .	16
<b>A</b>	<b>Summary</b>	<b>17</b>
A.1	Status . . . . .	17
A.2	Comments . . . . .	17

# 1 Front

seq_num	400271	Sequence number
obs_id	3784	Observation id
title	REOLVING THE SHORT GAMMA-RAY BURST MYSTERY	Proposal title
observer	Dr Kevin Hurley	Principal investigator
object	GRB021201	Source name
dtcycle	0	&#160
cycle	P	events from which exps? Prim/Second/Both
ra_targ	121.942083	Observer's specified target RA [deg]
dec_targ	21.238306	Observer's specified target Dec [deg]
ra_nom	121.94483938541	Nominal RA [deg]
dec_nom	21.242140328693	Nominal Dec [deg]
roll_nom	79.141383393283	Nominal Roll [deg]
revision	3	Processing version of data
ontime	19967.739334196	Sum of GTIs [s]
livetime	19714.895795617	Livetime [s]
ontime0	19967.616214216	Sum of GTIs [s]
ontime1	19967.657254189	Sum of GTIs [s]
ontime2	19967.698294193	Sum of GTIs [s]
ontime3	19967.739334196	Sum of GTIs [s]
ontime6	19967.821414202	Sum of GTIs [s]
ontime7	19967.780374199	Sum of GTIs [s]
l2events	184096	Number of level 2 events

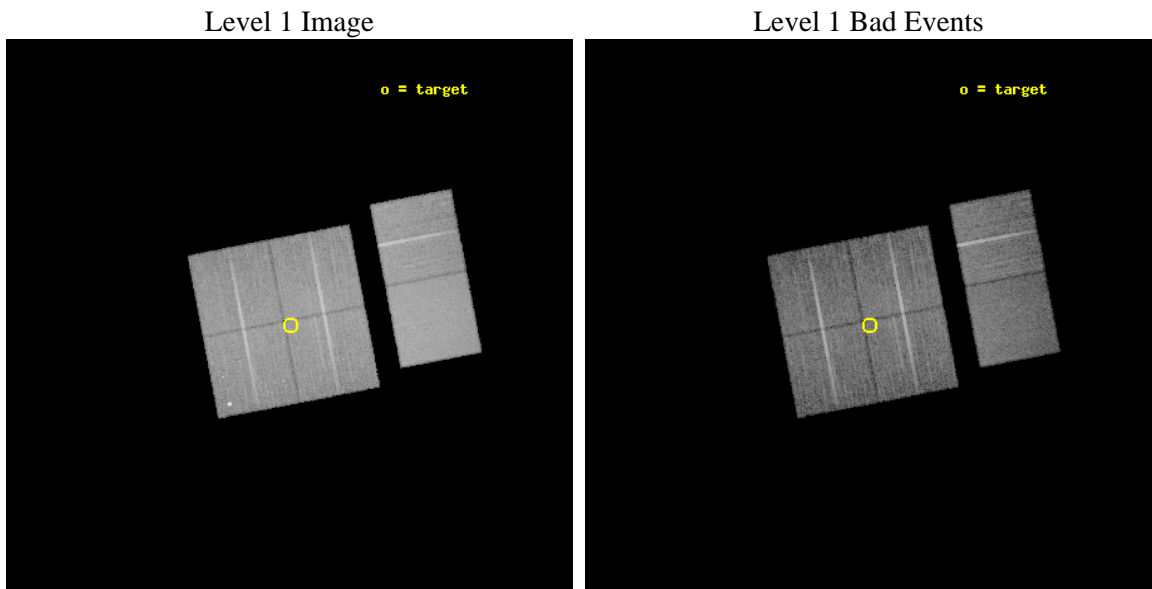




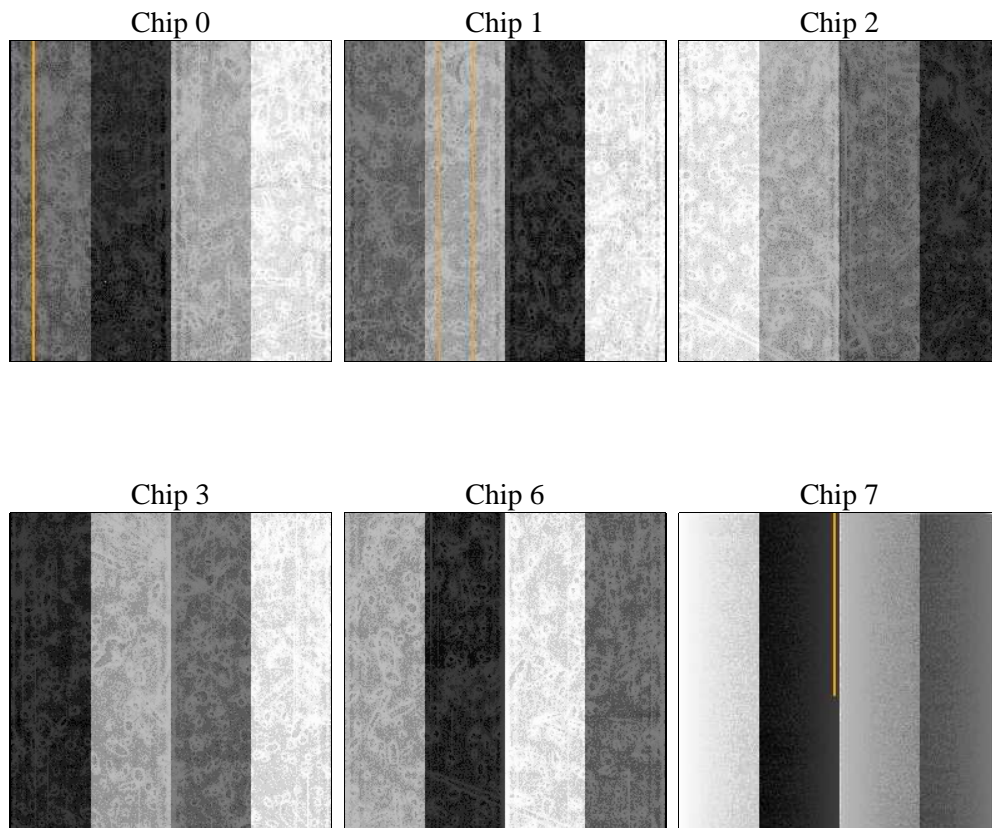
## 2 OBI

### 2.1 OBI

#### 2.1.1 Images



#### 2.1.2 Bias



### 2.1.3 Parameters

obi_num	0	Obi number	sched_exp_time	20000.000000	[s] Scheduled observation exposure time
ascdsver	8.4.5	Processing system revision	ontime	19967.739334196	Sum of GTIs [s]
caldsver	4.5.2	&#160	ontime0	19967.616214216	Sum of GTIs [s]
date	2012-10-19T05:24:31	Date and time of file creation	ontime1	19967.657254189	Sum of GTIs [s]
revision	3	Processing version of data	ontime2	19967.698294193	Sum of GTIs [s]
			ontime3	19967.739334196	Sum of GTIs [s]
			ontime6	19967.821414202	Sum of GTIs [s]
			ontime7	19967.780374199	Sum of GTIs [s]
			l1events	823642	Number of level 1 events

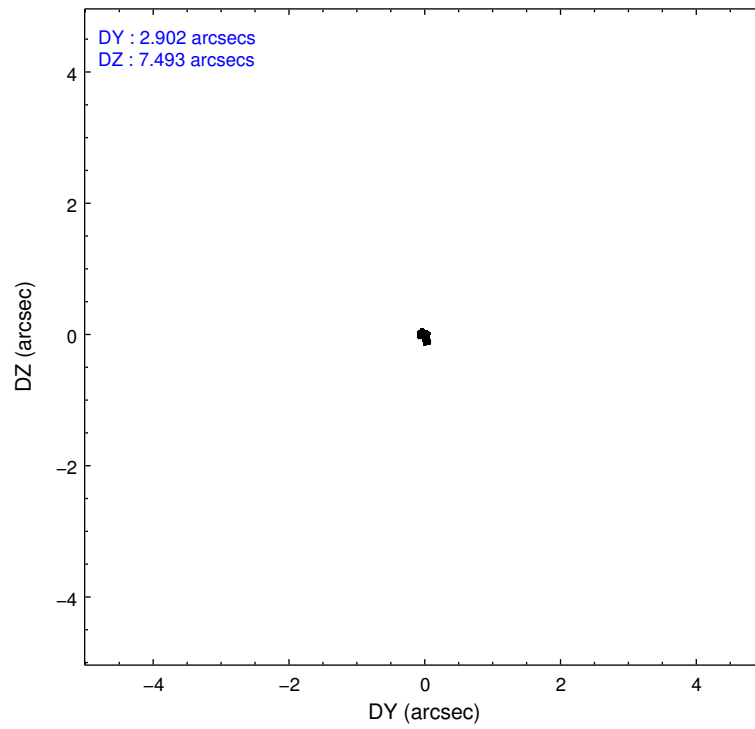
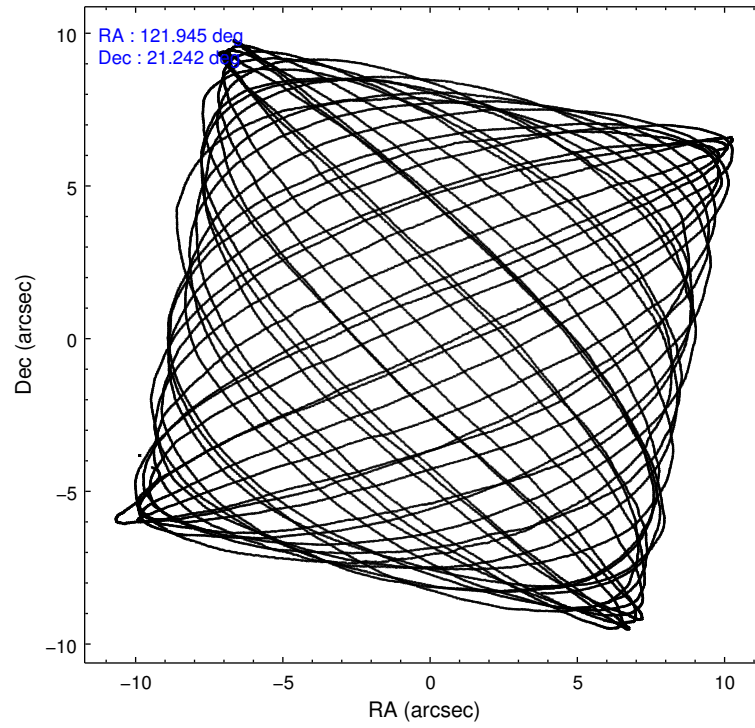
### 2.1.4 Events

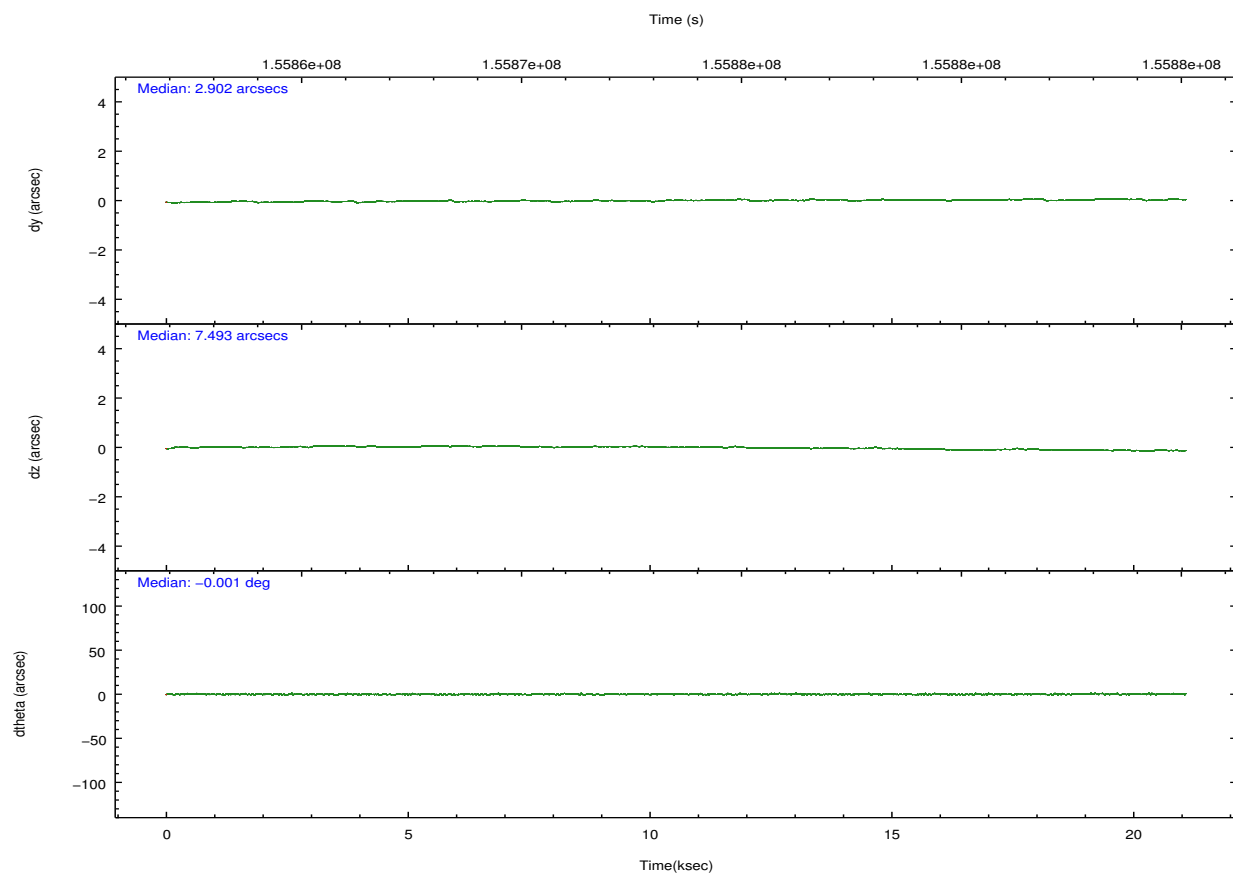
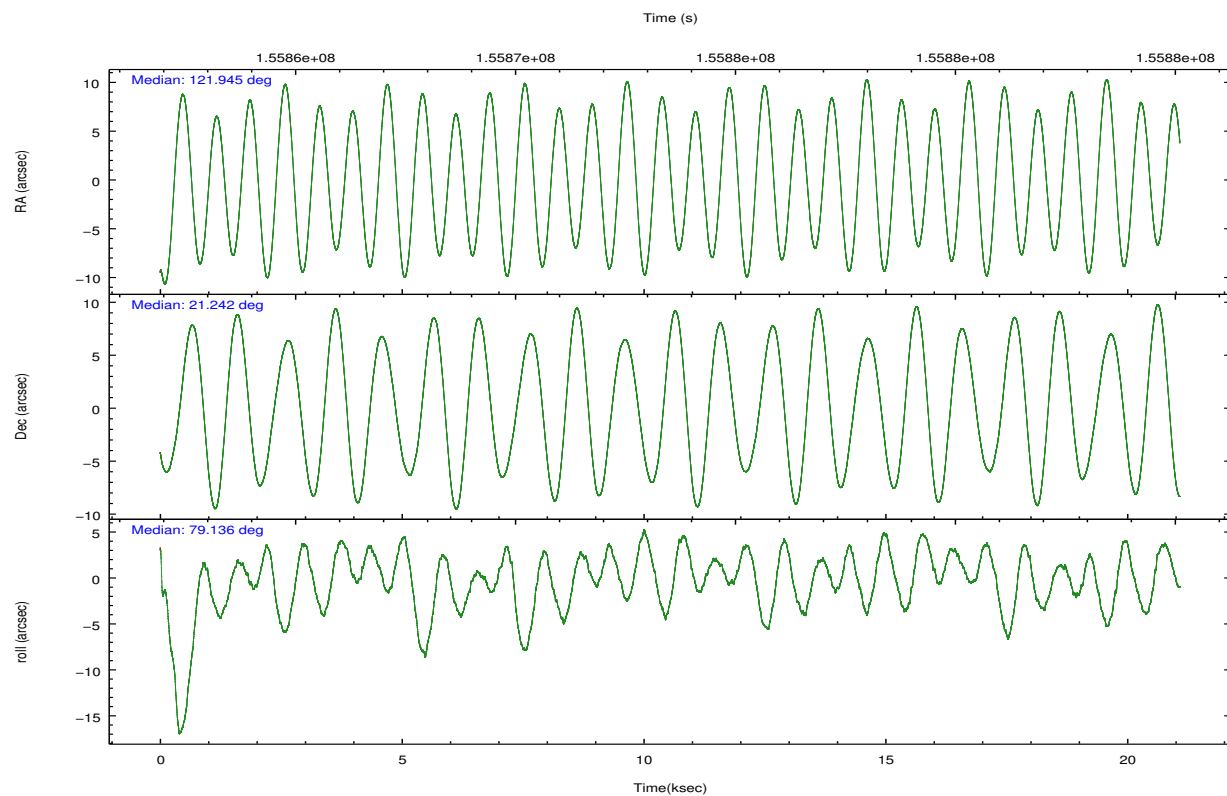
	ccd 0	ccd 1	ccd 2	ccd 3	ccd 6	ccd 7		ccd 0	ccd 1	ccd 2	ccd 3	ccd 6	ccd 7
level 1 events	119159	126684	134884	132220	136487	174208	grade 0 events	12858	16111	12924	13628	12499	7040
rejected events	96085	98858	112376	108521	112890	96320		10%	12%	9%	10%	9%	4%
rejected %	80%	78%	83%	82%	82%	55%	grade 1 events	99	98	118	91	95	160
								0%	0%	0%	0%	0%	0%
							grade 2 events	3855	4485	3446	3700	4112	14529
								3%	3%	2%	2%	3%	8%
							grade 3 events	1781	1914	1639	1660	1824	6683
								1%	1%	1%	1%	1%	3%
							grade 4 events	1673	1906	1647	1763	1728	6608
								1%	1%	1%	1%	1%	3%
							grade 5 events	4817	5103	4567	5153	5605	15648
								4%	4%	3%	3%	4%	8%
							grade 6 events	2910	3414	2853	2949	3435	43035
								2%	2%	2%	2%	2%	24%
							grade 7 events	91166	93653	107690	103276	107189	80505
								76%	73%	79%	78%	78%	46%

## 2.2 Compared Parameters

Parameter	Planned	Actual	Parameter	Planned	Actual
Instrument	ACIS	ACIS	Obspar format version number	7	7
Detector	ACIS-012367	ACIS-012367	Obspar file type	PREDICTED	ACTUAL
Grating	NONE	NONE	Obspar update status	NONE	UPDATED
Data mode	FAINT	FAINT	Number of optional ACIS chips dropped	0	0
Observation mode	POINTING	POINTING	On-chip summing requested	N	N
[deg] Pointing RA	121.954599	121.944839385406	Subarray requested	NONE	NONE
[deg] Pointing Dec	21.216325	21.24214032869282	Alternating exposures requested	N	N
[deg] Pointing Roll	78.929154	79.14138339328279	[s] Primary exposure time	0.000000	3.2
[mm] SIM focus pos	-0.782348	-0.7809083437167272			
[mm] SIM defocus	0	0.001439871863259334			
[mm] SIM translation stage pos	-233.592463	-233.5874344608287			
[mm] SIM translation stage offset	0	-0.005018542100998502			
[s] Observation start time (MET)	155864056.184000	155862643.47531			
Observation start date	2002-12-09T23:33:12	2002-12-09T23:10:43			
[s] Observation end time (MET)	155884056.184000	155884535.42622			
Observation end date	2002-12-10T05:06:32	2002-12-10T05:15:35			
Read mode	TIMED	TIMED			

## 2.3 Aspect



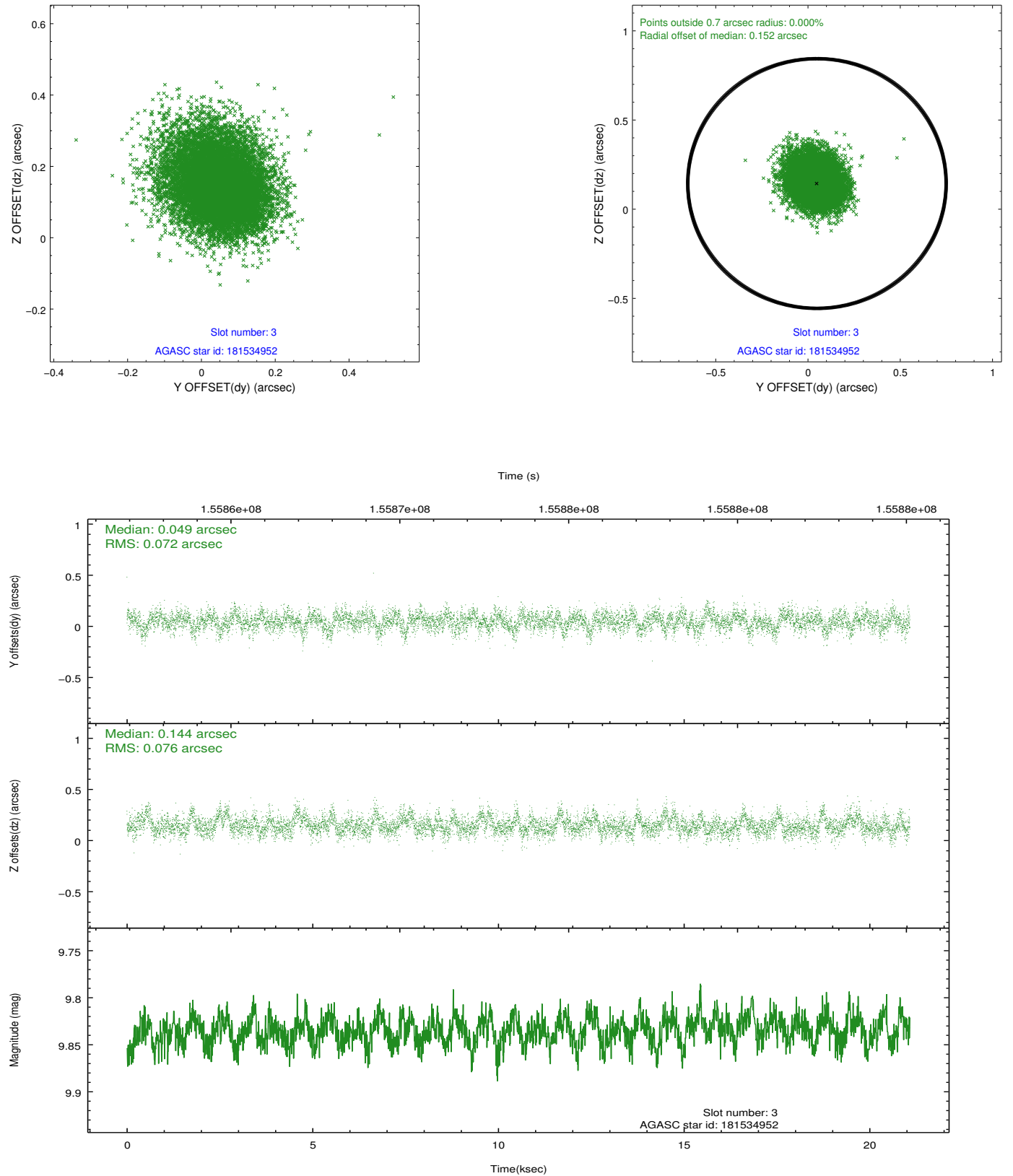


### Slot Statistics

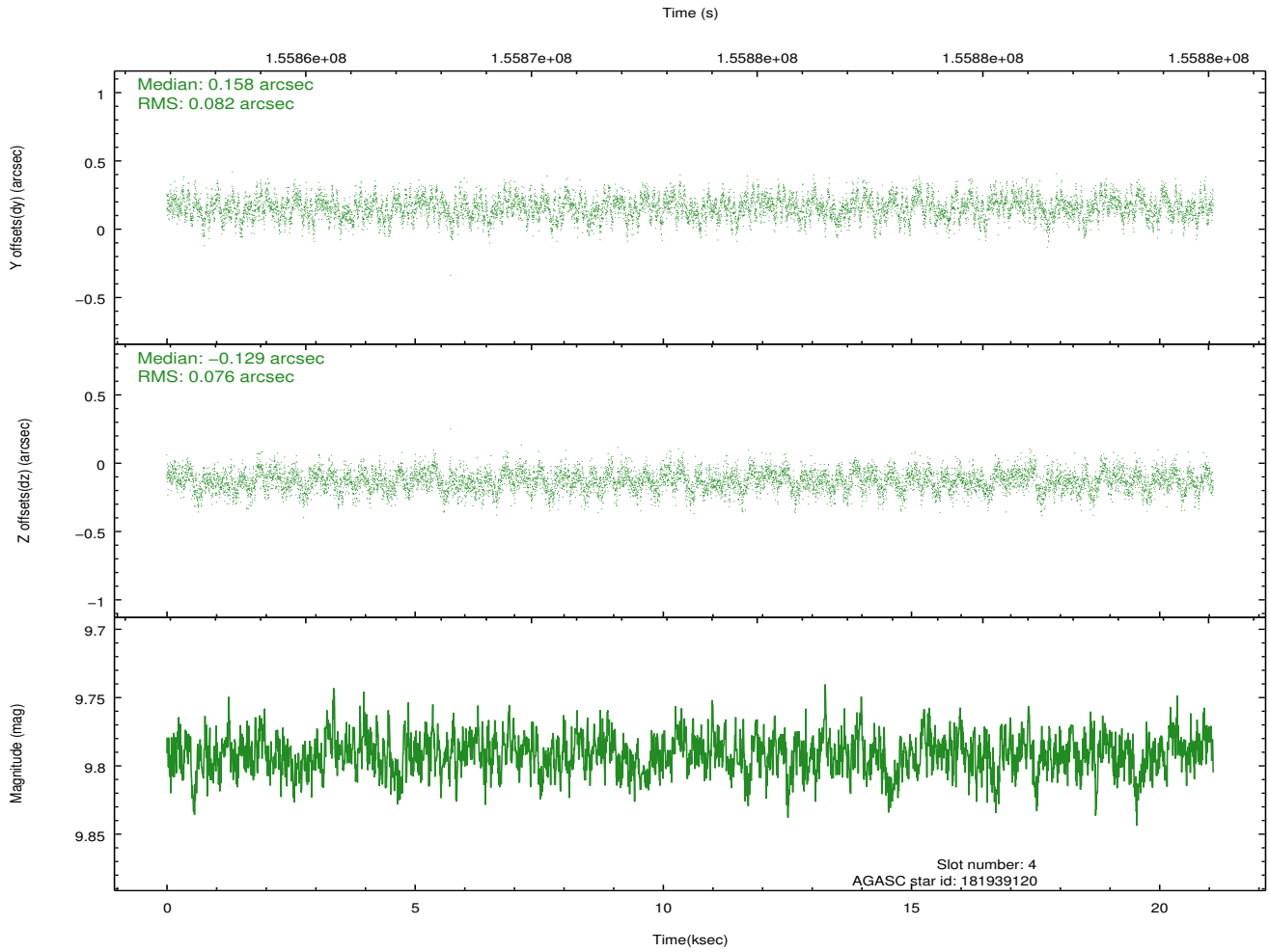
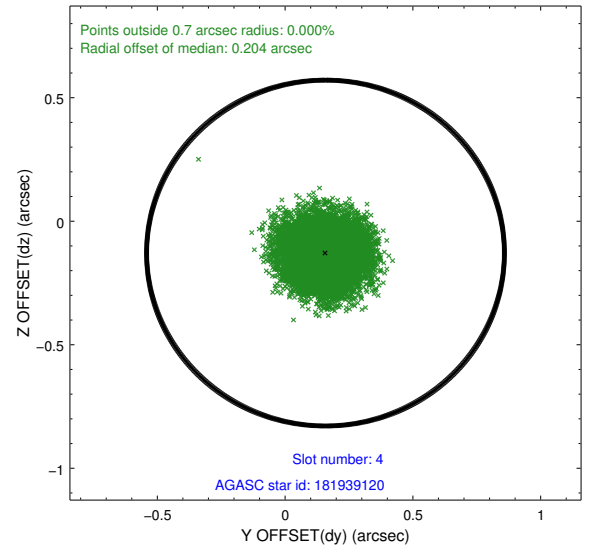
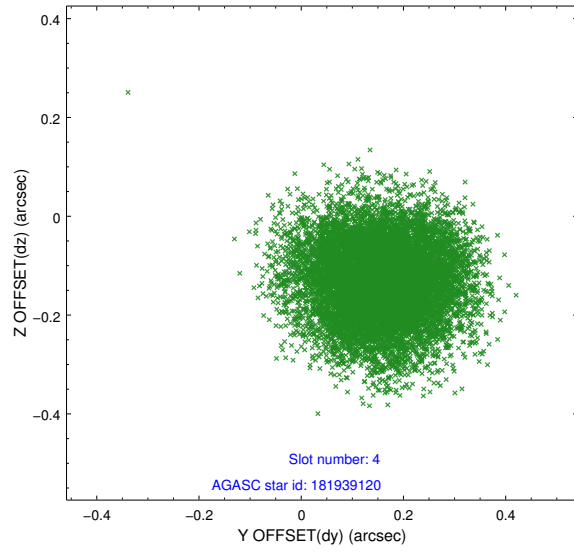
slot	status	id	mag	n_pts	med_dy	med_dz	dr1	dr2	ra	dec	mean_y	mean_z
0	FID	ACIS-I-1	7.25	5141	0.012	0.019	0.008	0.013	0.000000	0.000000	936.90	-830.87
1	FID	ACIS-I-5	7.24	5141	-0.083	0.057	0.007	0.012	0.000000	0.000000	-1811.18	1066.61
2	FID	ACIS-I-6	7.26	5140	-0.020	-0.005	0.007	0.012	0.000000	0.000000	402.27	1711.21
3	GUIDE	181534952	9.83	10275	0.049	0.144	0.111	0.183	122.257601	20.539153	-2193.81	-1470.84
4	GUIDE	181939120	9.79	10280	0.158	-0.129	0.121	0.190	121.402306	20.783384	-1882.24	1524.92
5	GUIDE	182061696	9.75	10276	-0.084	0.046	0.114	0.185	122.373049	21.367790	807.57	-1271.74
6	GUIDE	181942008	9.34	10280	0.017	-0.165	0.093	0.149	121.454983	20.803759	-1776.40	1364.64
7	GUIDE	182062104	9.73	10266	-0.140	0.098	0.096	0.156	122.204442	21.589629	1481.27	-562.56

## 2.4 Star Slots

### 2.4.1 Slot 3

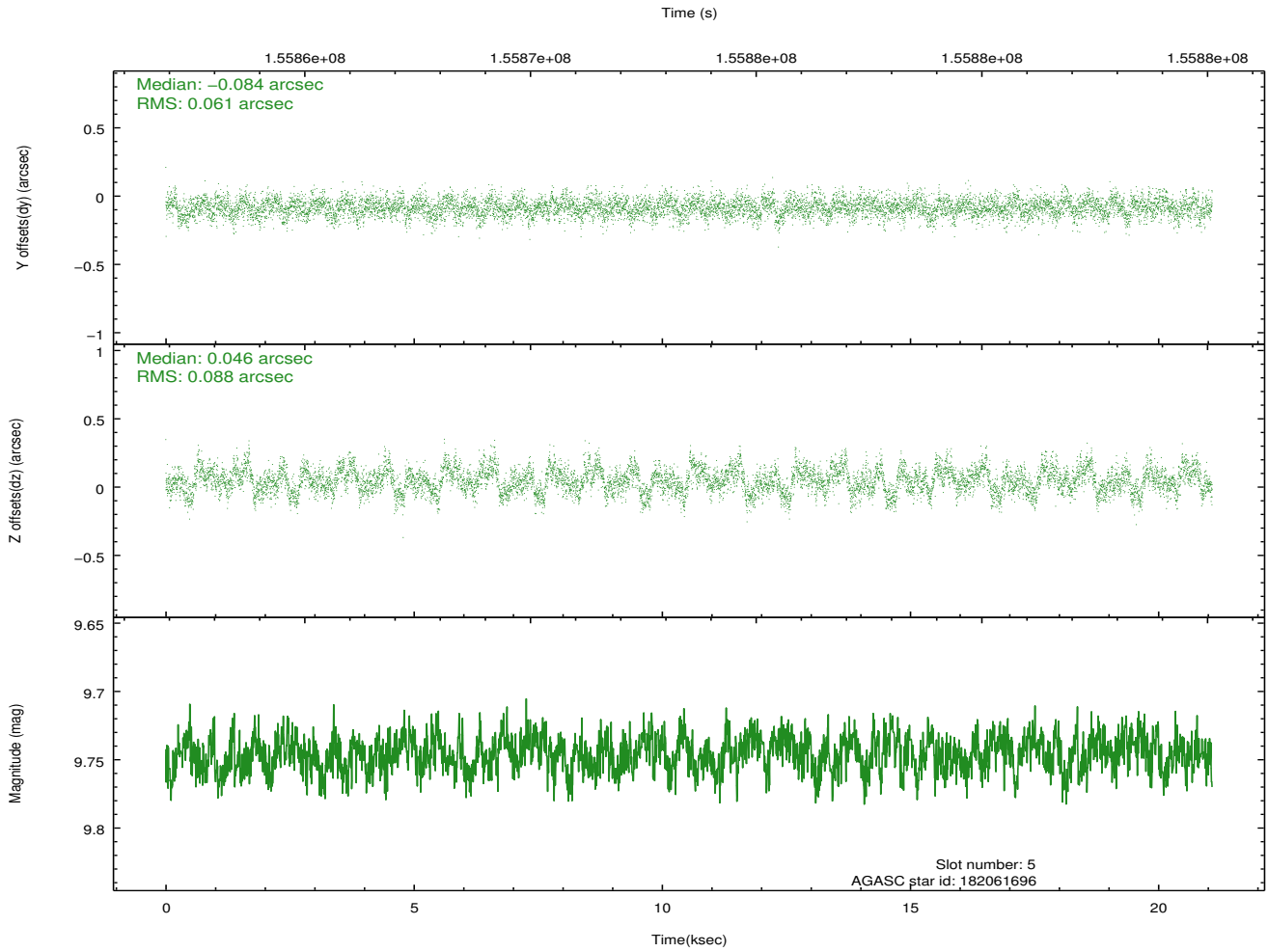
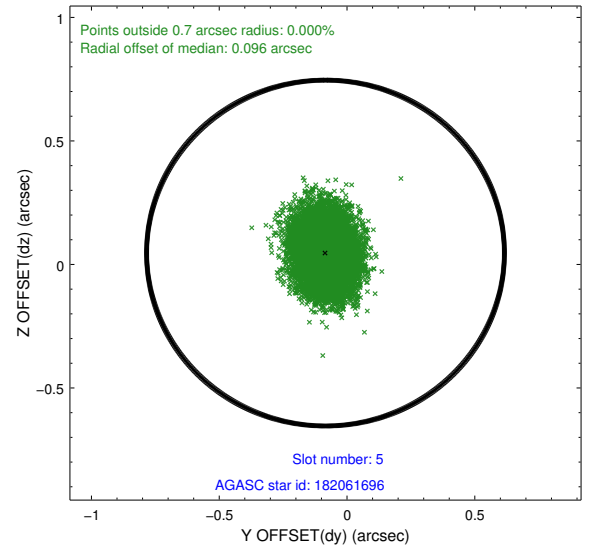
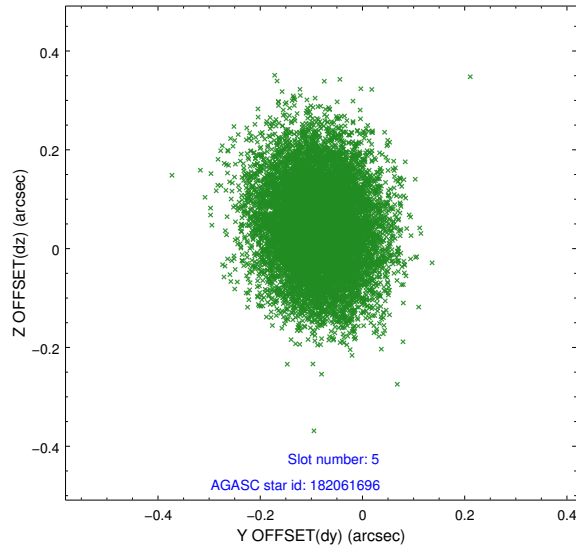


## 2.4.2 Slot 4

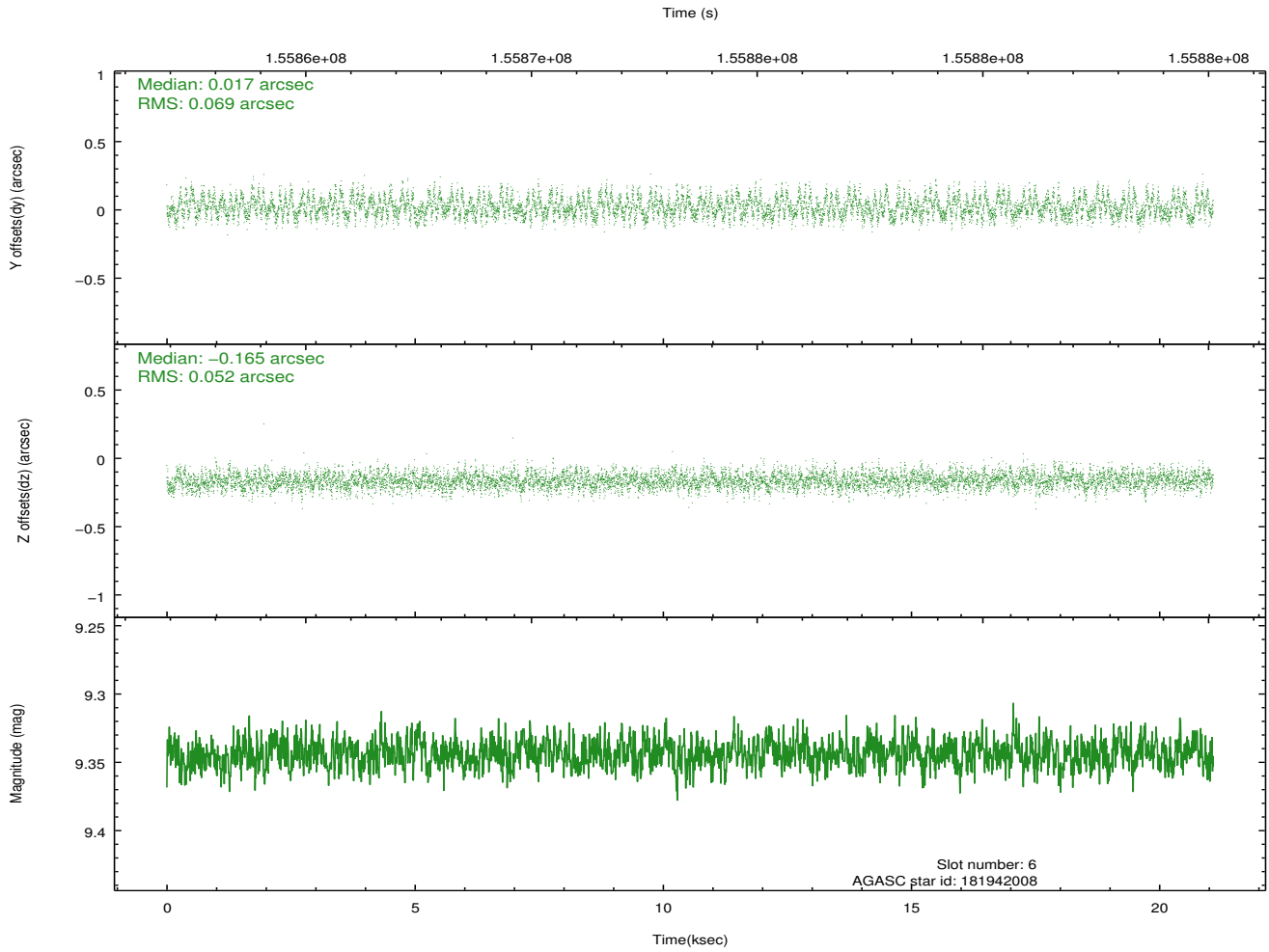
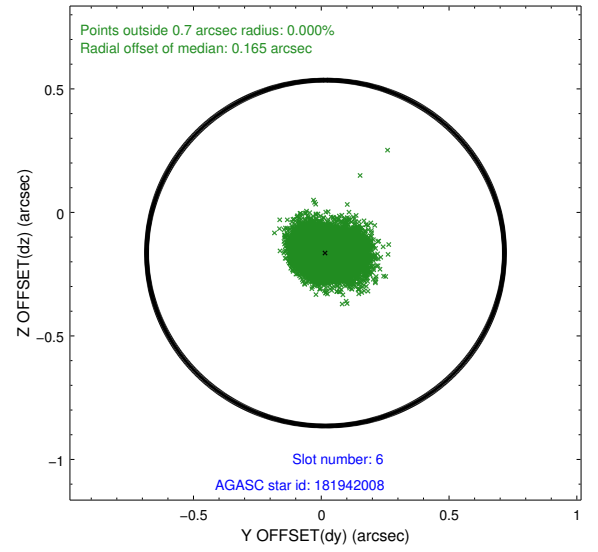
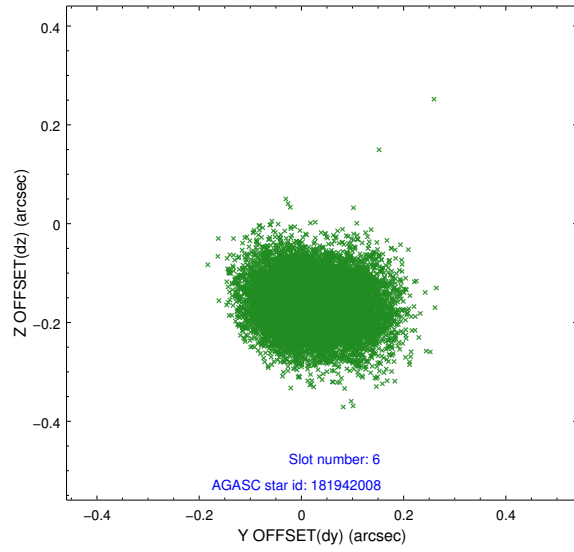




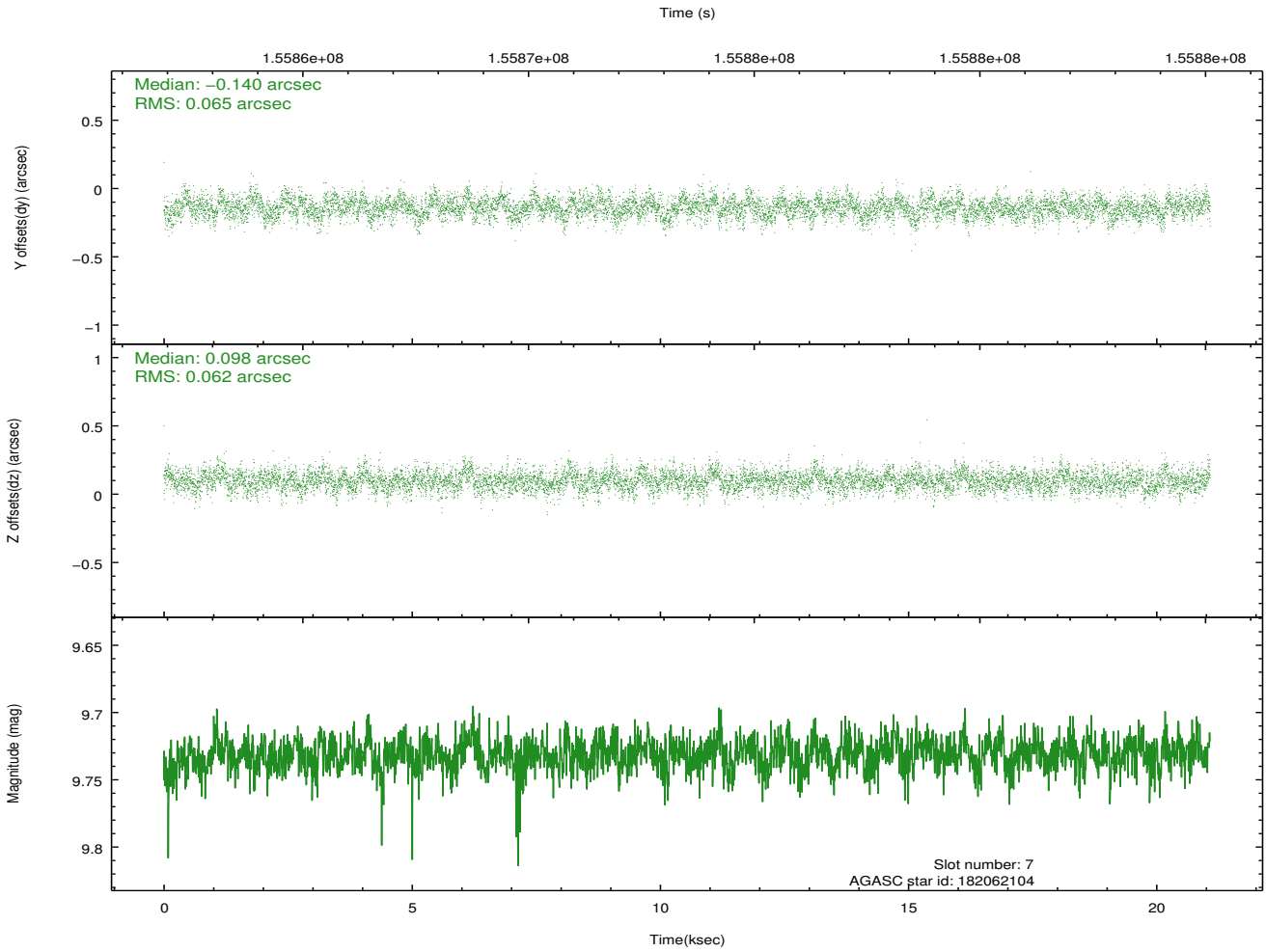
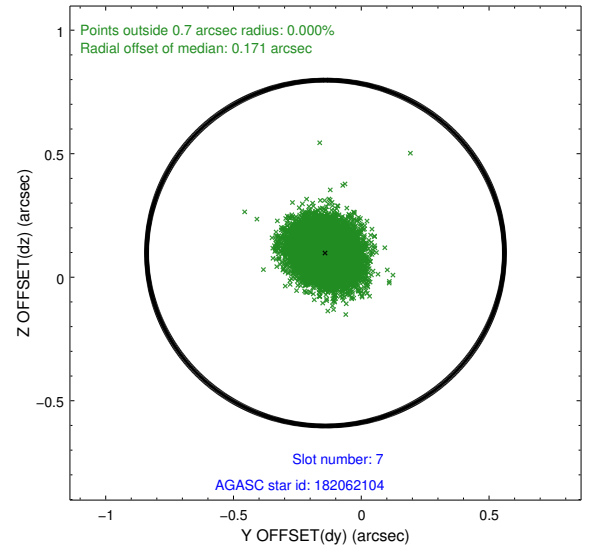
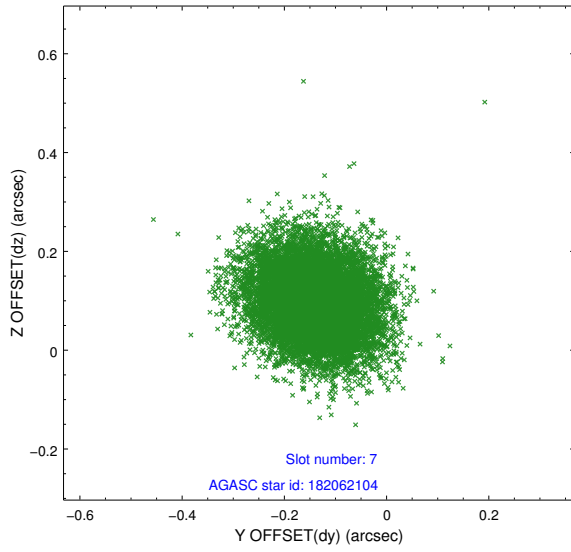
### 2.4.3 Slot 5



## 2.4.4 Slot 6

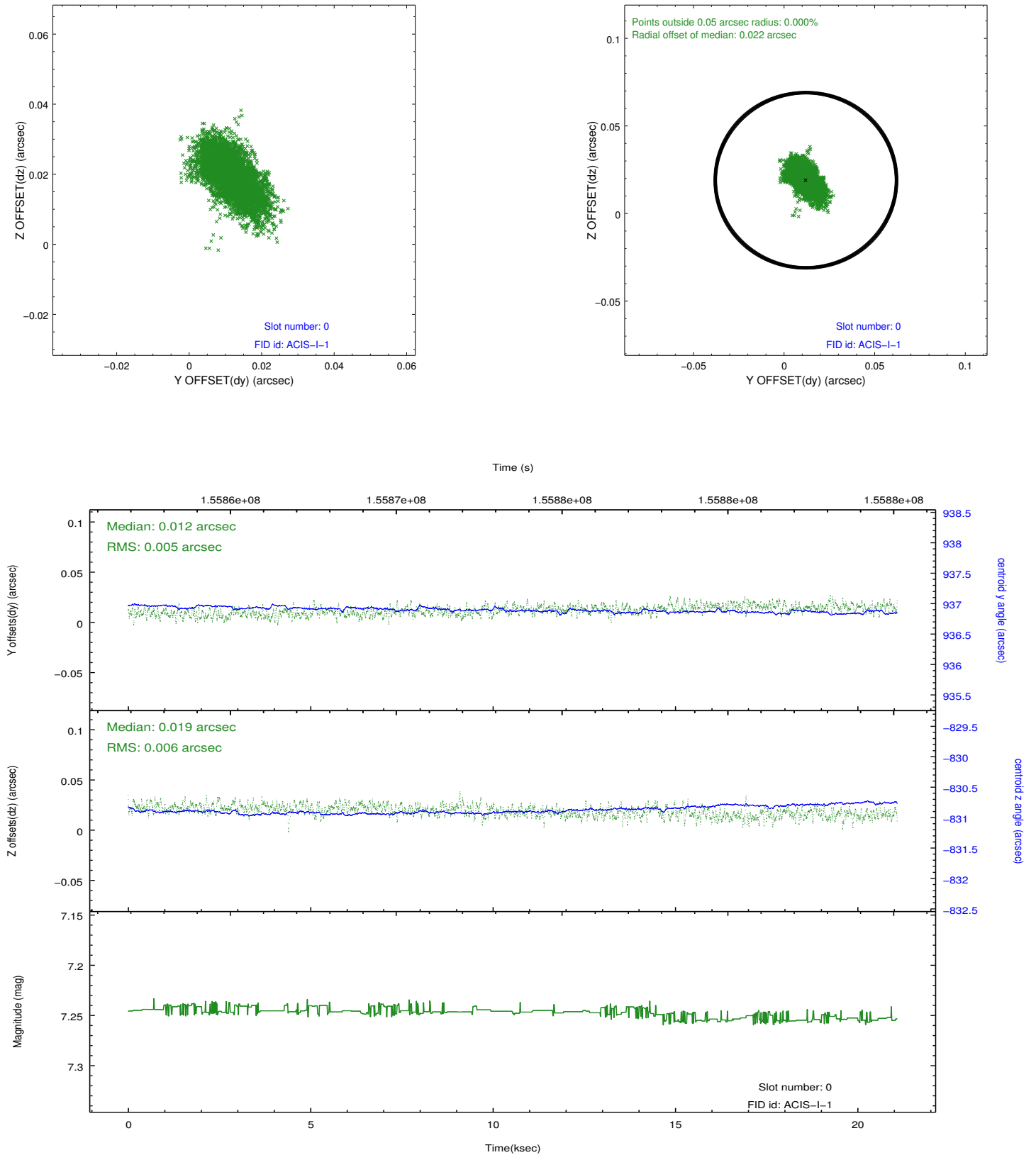


## 2.4.5 Slot 7

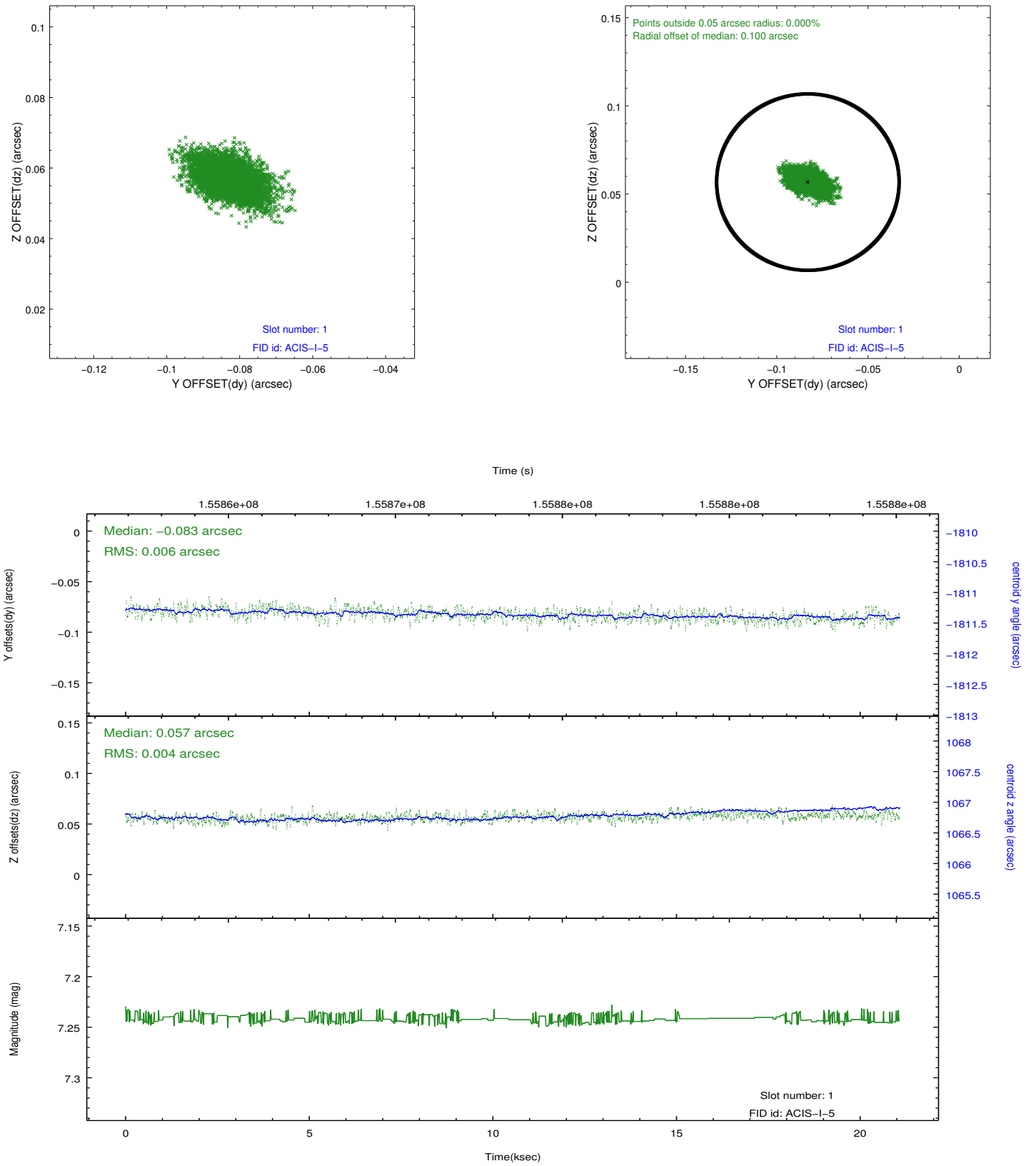


## 2.5 FID Slots

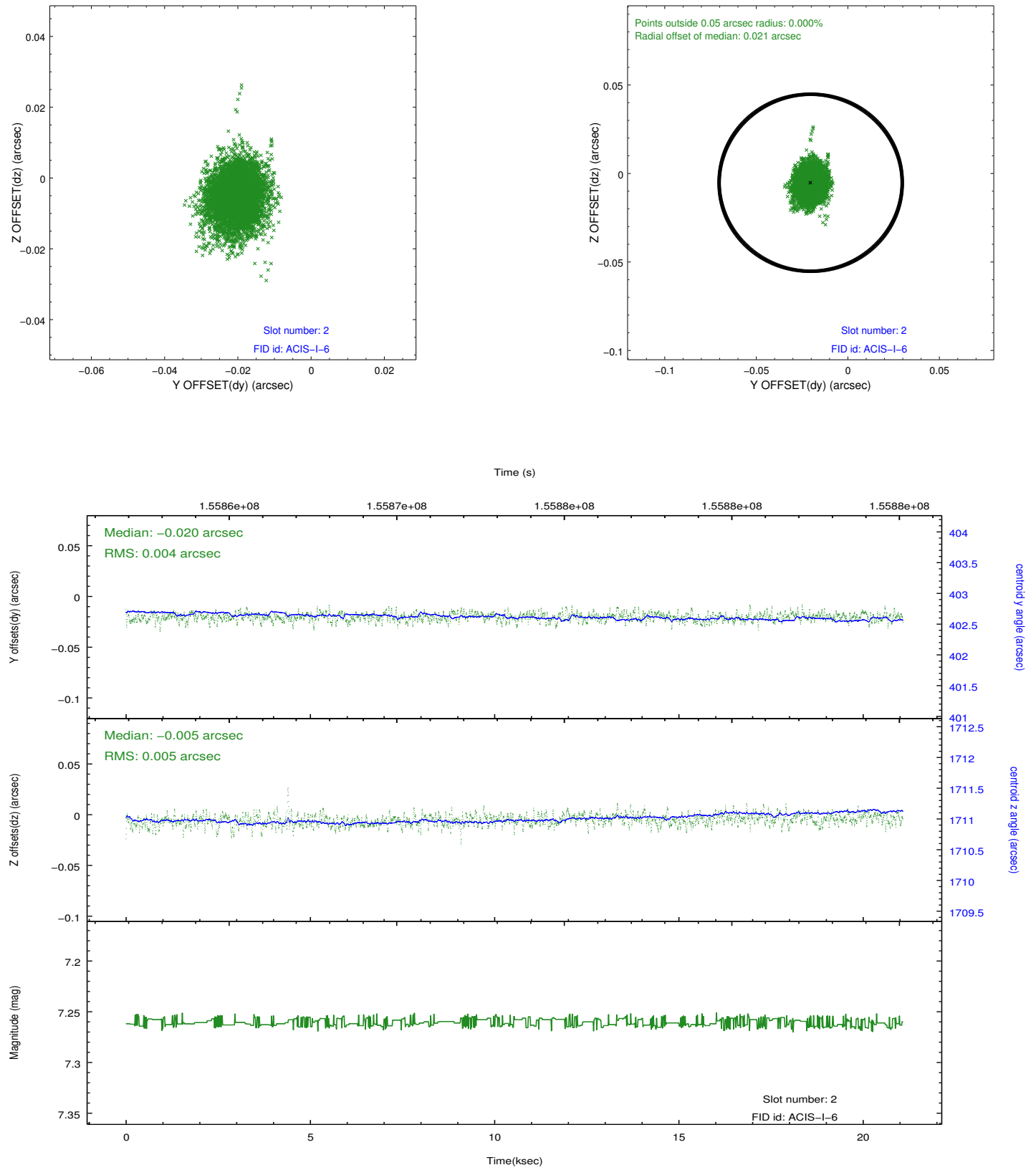
### 2.5.1 Slot 0



## 2.5.2 Slot 1



### 2.5.3 Slot 2



## A Summary

### A.1 Status

V&V Scientist	Jen Lauer
V&V Date (YYYY-MM-DD)	2012.10.31
V&V Edition	1
V&V Disposition and Status	OK
V&V Charge Time	19.967

### A.2 Comments