

V&V Reference Report

L2 ASCDS Version : 7.6.8

Observation 3510 - L2 Version 001
Chandra X-Ray Center

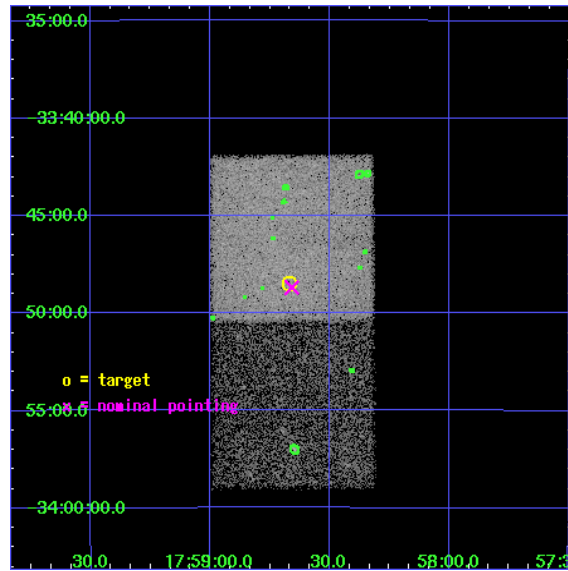
L2 Processing Date : Jul 2 2006

Contents

1	Front	2
2	OBI	3
2.1	OBI	3
2.1.1	Images	3
2.1.2	Bias	3
2.1.3	Parameters	4
2.1.4	Events	4
2.2	Compared Parameters	5
2.3	Aspect	6
2.4	Star Slots	9
2.4.1	Slot 3	9
2.4.2	Slot 4	10
2.4.3	Slot 5	11
2.4.4	Slot 6	12
2.4.5	Slot 7	13
2.5	FID Slots	14
2.5.1	Slot 0	14
2.5.2	Slot 1	15
2.5.3	Slot 2	16
3	Point Sources	17
A	Summary	18
A.1	Status	18
A.2	Comments	18

1 Front

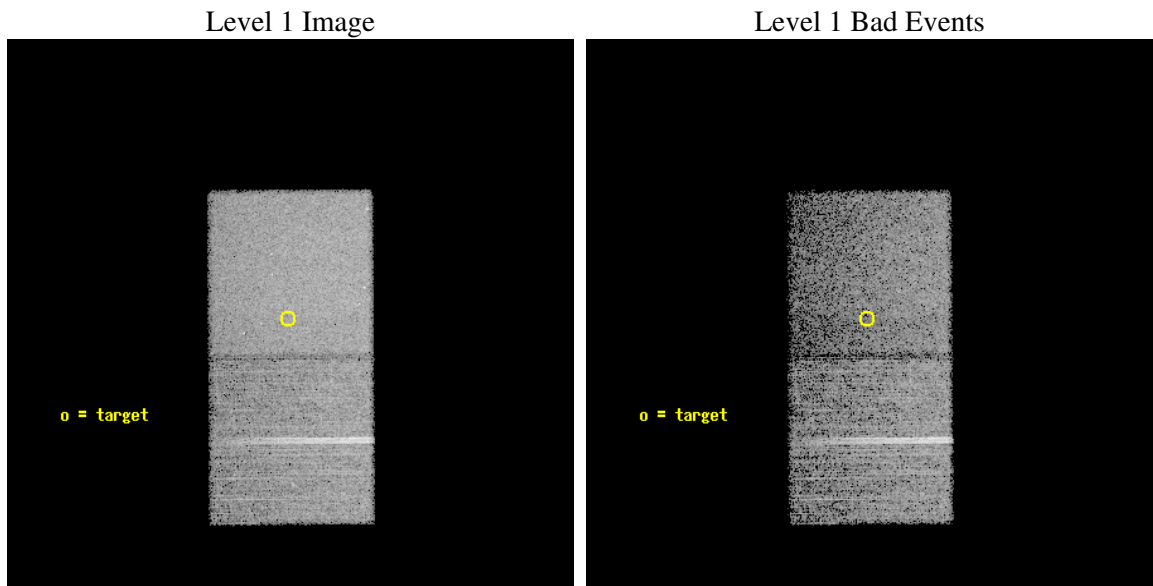
seq_num	400263
obs_id	3510
title	NEUTRON STARS IN QUIESCENCE
observer	Dr. Stephen Murray
object	4U1755-33
dtcycle	0
cycle	P
ra_targ	269.666667
dec_targ	-33.8075
ra_nom	269.66464506962
dec_nom	-33.811494456187
roll_nom	269.61430222829
revision	2
ontime	22209.0
livetime	21909.281035435
ontime6	22209.0
ontime7	22209.0
l2events	85385



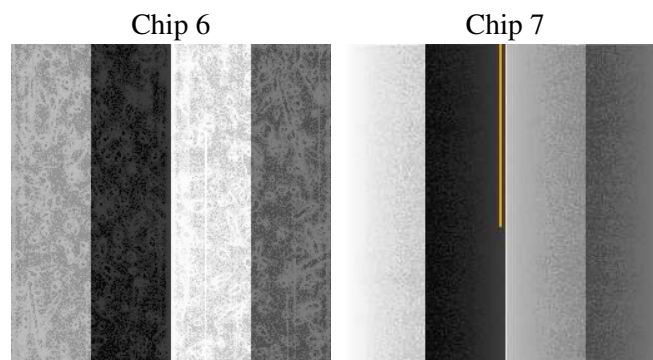
2 OBI

2.1 OBI

2.1.1 Images



2.1.2 Bias



2.1.3 Parameters

obi_num	0
ascdsver	7.6.8
caldsver	3.2.2
date	2006-07-03T02:19:24
revision	2

sched_exp_time	22000.000000
ontime	22254.059305072
ontime6	22254.059305072
ontime7	22254.059305072
l1events	279798

2.1.4 Events

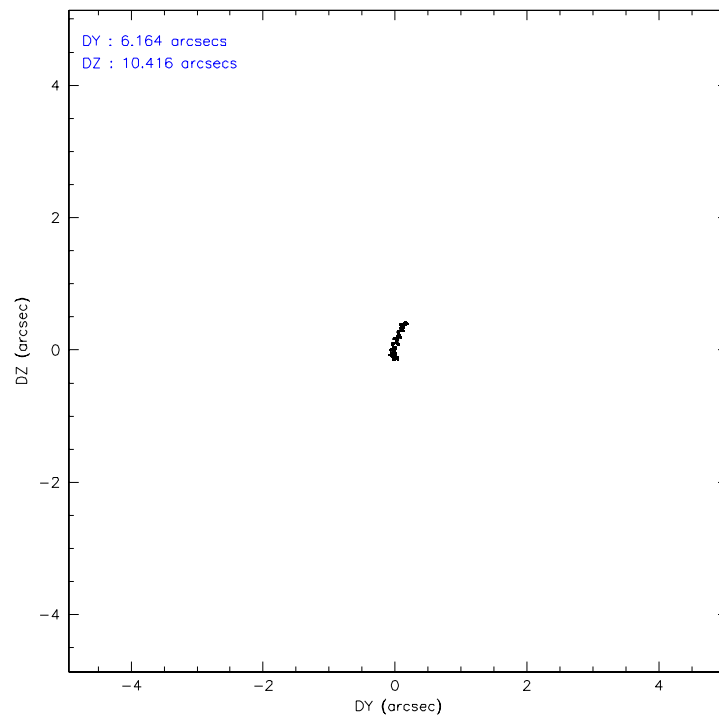
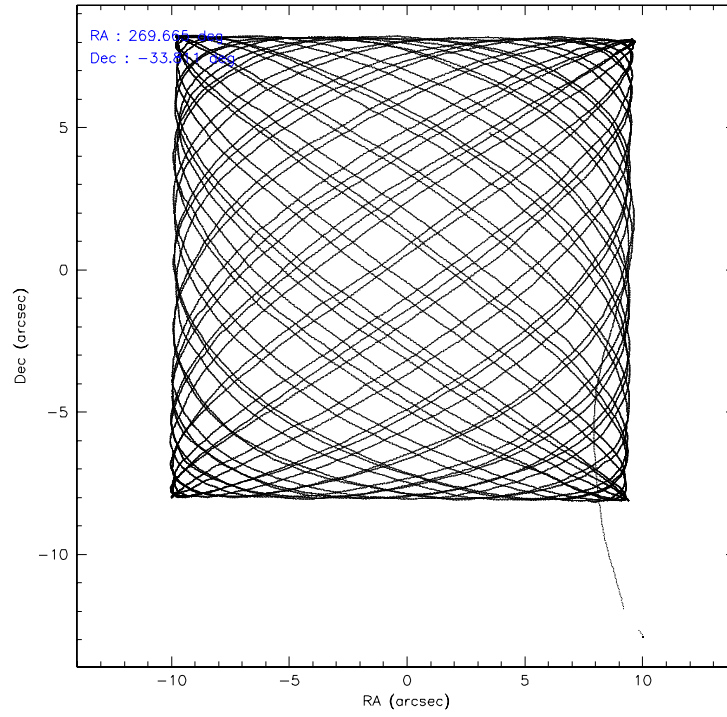
	ccd 6	ccd 7
level 1 events	127956	151842
rejected events	111656	80023
rejected %	87%	52%

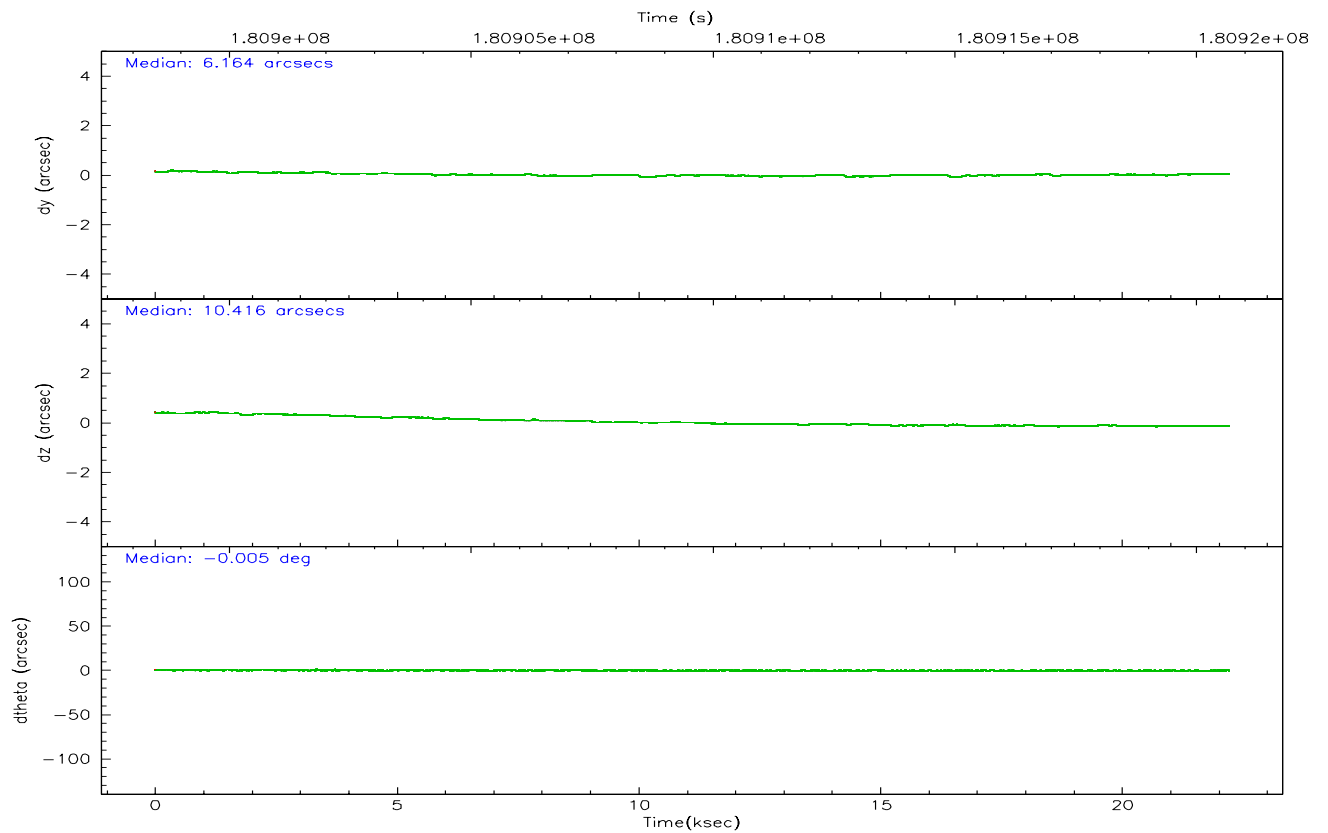
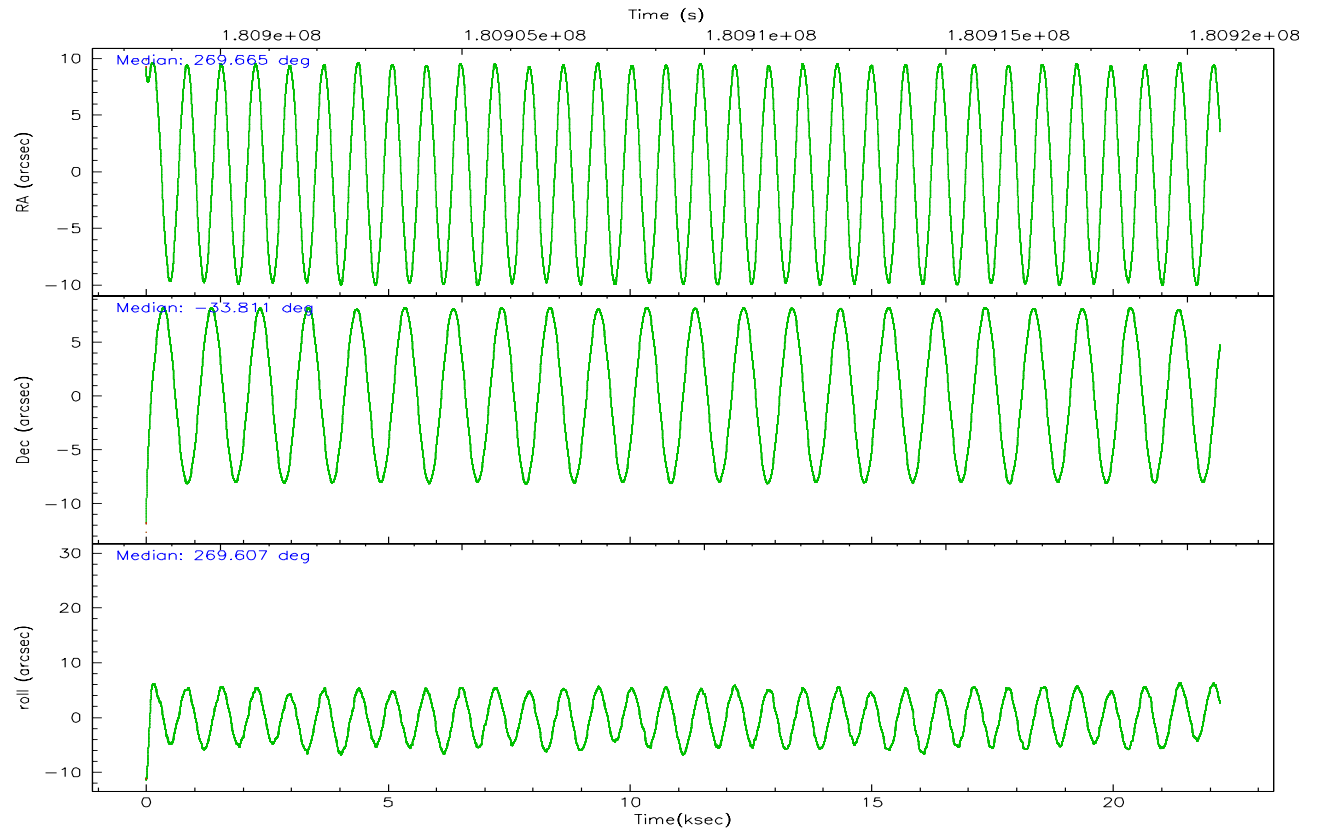
	ccd 6	ccd 7
grade 0 events	7616	5452
	5%	3%
grade 1 events	47	63
	0%	0%
grade 2 events	2972	16829
	2%	11%
grade 3 events	1506	4229
	1%	2%
grade 4 events	1498	4089
	1%	2%
grade 5 events	4912	10499
	3%	6%
grade 6 events	2735	41345
	2%	27%
grade 7 events	106670	69336
	83%	45%

2.2 Compared Parameters

Parameter	Planned	Actual	Parameter	Planned	Actual
Instrument	ACIS	ACIS	Obspar format version number	6	6
Detector	ACIS-67	ACIS-67	Obspar file type	PREDICTED	ACTUAL
Grating	NONE	NONE	Obspar update status	NONE	UPDATED
Data mode	VFAINT	VFAINT	On-chip summing requested	N	N
Observation mode	POINTING	POINTING	Subarray requested	NONE	NONE
Pointing RA	269.648039	269.6646450696187	Alternating exposures requested	N	N
Pointing Dec	-33.788017	-33.81149445618669	Primary exposure time	0.000000	3
Pointing Roll	269.448452	269.614302228289			
SIM focus pos (mm)	-0.684267	-0.6828225247311905			
SIM defocus (mm)	0	0.001444936568705701			
SIM translation stage pos (mm)	-190.132523	-190.1400660498719			
SIM translation stage offset (mm)	0	0.00754346686406393			
Observation start time	180898670.184000	180897678.62206			
Observation start date	2003-09-25T17:36:46	2003-09-25T17:21:18			
Observation end time	180920670.184000	180921110.12307			
Observation end date	2003-09-25T23:43:26	2003-09-25T23:51:50			
Read mode	TIMED	TIMED			

2.3 Aspect



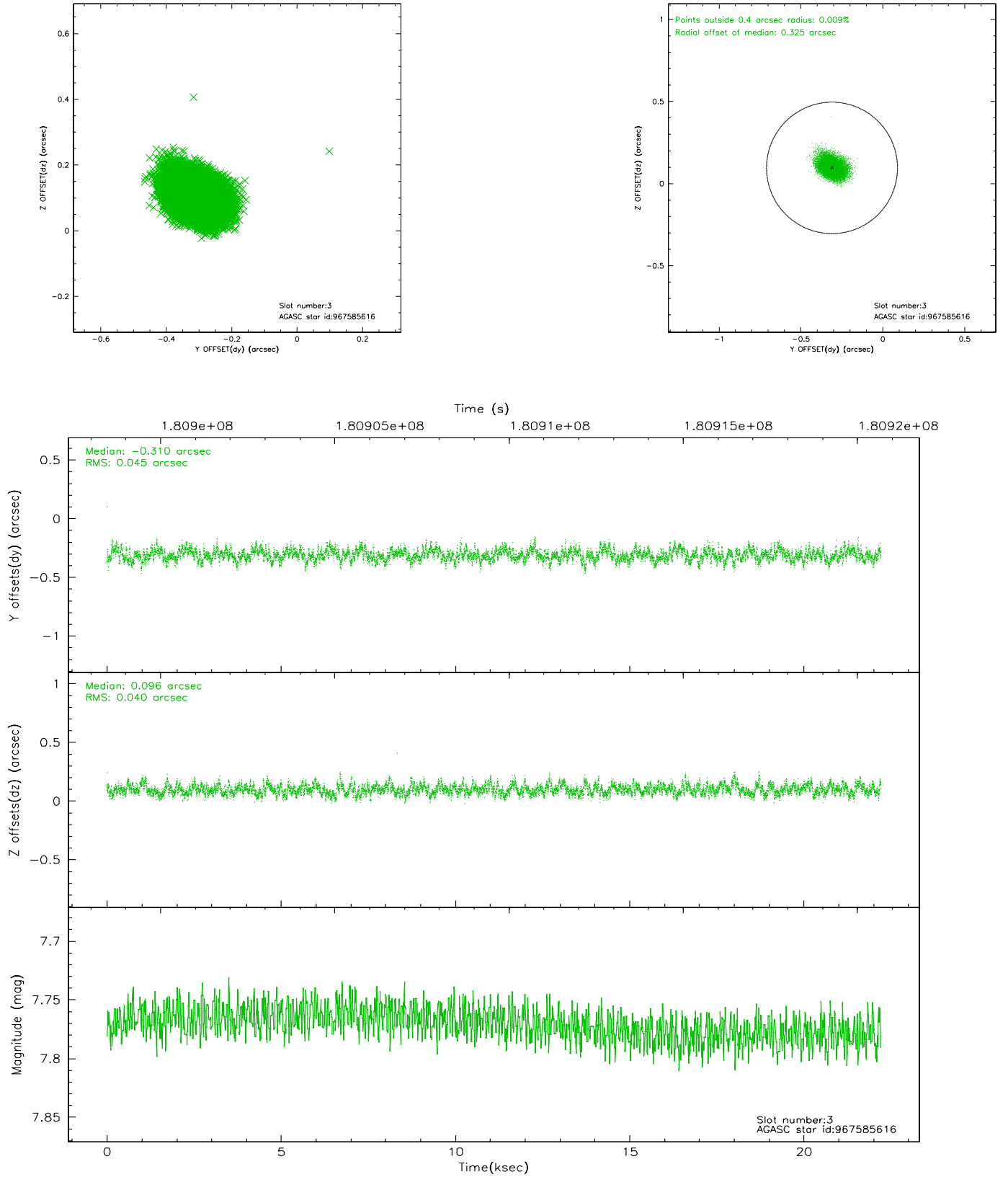


Slot Statistics

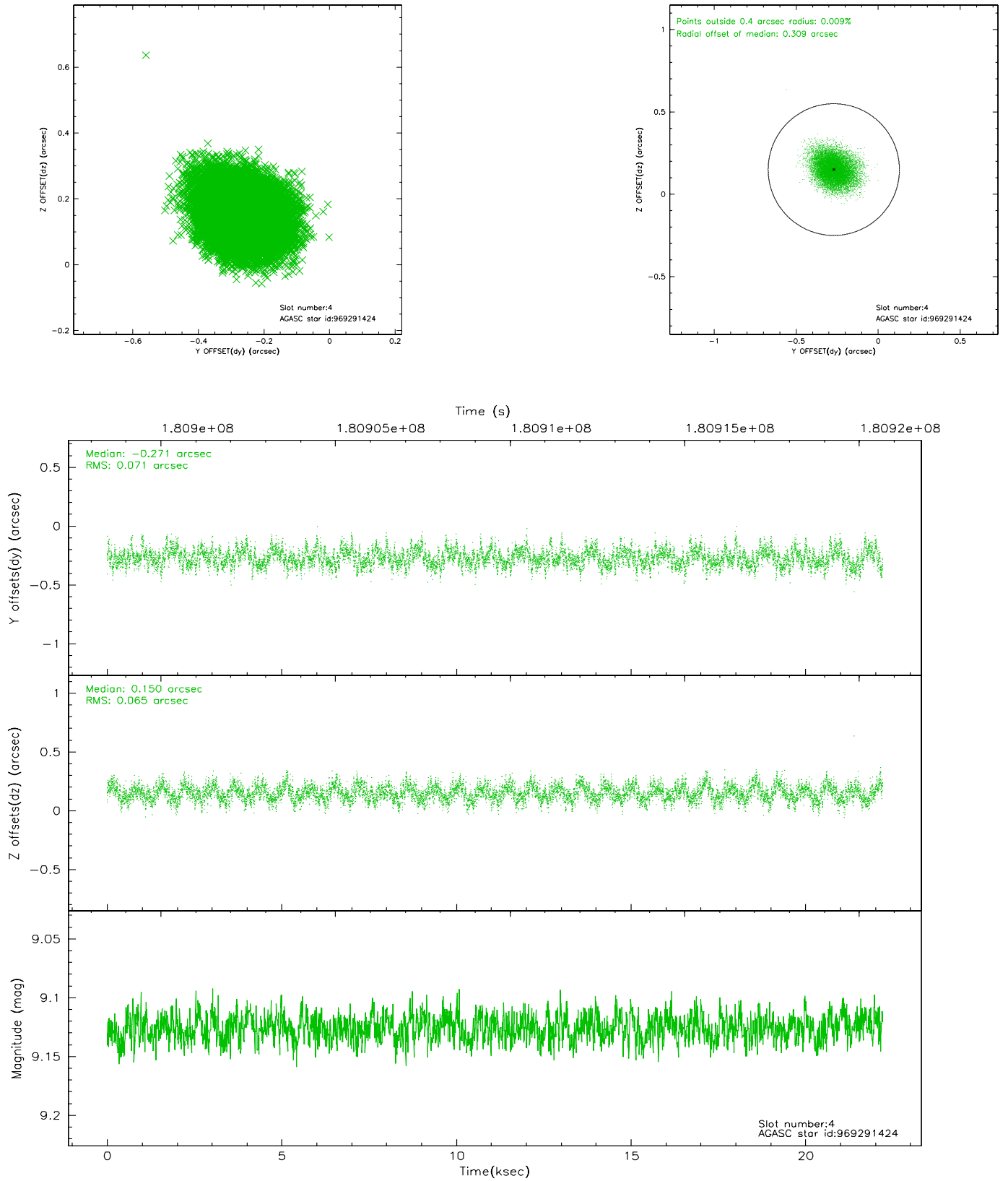
slot	status	id	mag	n_pts	med_dy	med_dz	dr1	dr2	ra	dec	mean_y	mean_z
0	FID	ACIS-S-1	7.18	5418	-0.025	-0.013	0.011	0.022	0.000000	0.000000	937.09	-1727.38
1	FID	ACIS-S-4	7.20	5418	0.014	0.025	0.009	0.016	0.000000	0.000000	2154.62	176.66
2	FID	ACIS-S-5	7.23	5418	-0.015	0.000	0.008	0.012	0.000000	0.000000	-1811.57	170.41
3	GUIDE	967585616	7.77	10835	-0.310	0.096	0.064	0.105	269.985133	-33.408329	-1375.12	999.86
4	GUIDE	969291424	9.13	10836	-0.271	0.150	0.102	0.164	270.075194	-33.189856	-2163.36	1266.24
5	GUIDE	969804208	8.87	10833	0.235	0.278	0.065	0.105	270.411541	-34.412083	2233.24	2290.05
6	GUIDE	968106320	9.21	10831	0.259	-0.360	0.120	0.192	268.826628	-34.368465	2123.89	-2420.44
7	GUIDE	968110016	8.40	10830	0.085	-0.170	0.099	0.163	268.984118	-34.286625	1821.12	-1957.51

2.4 Star Slots

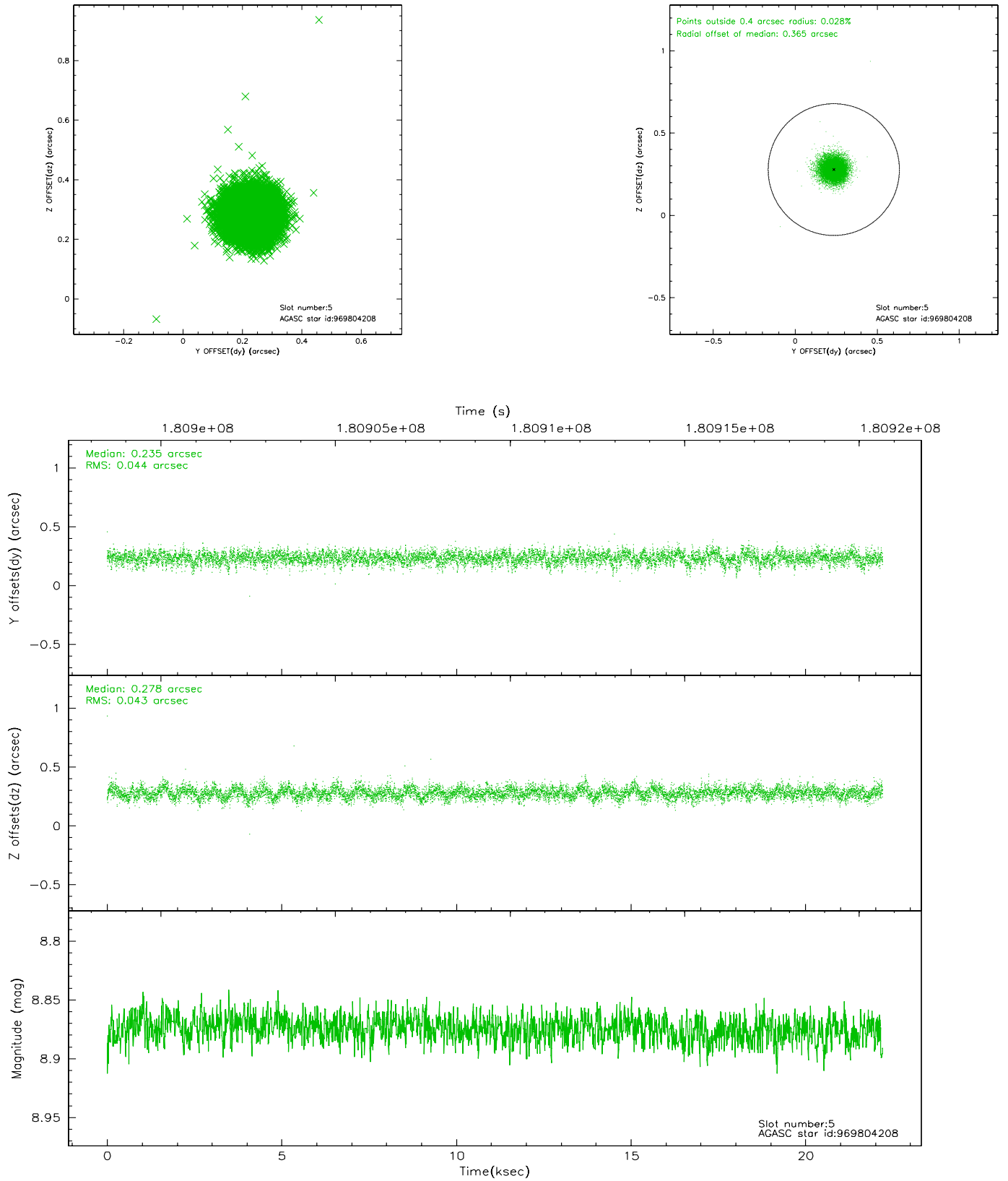
2.4.1 Slot 3



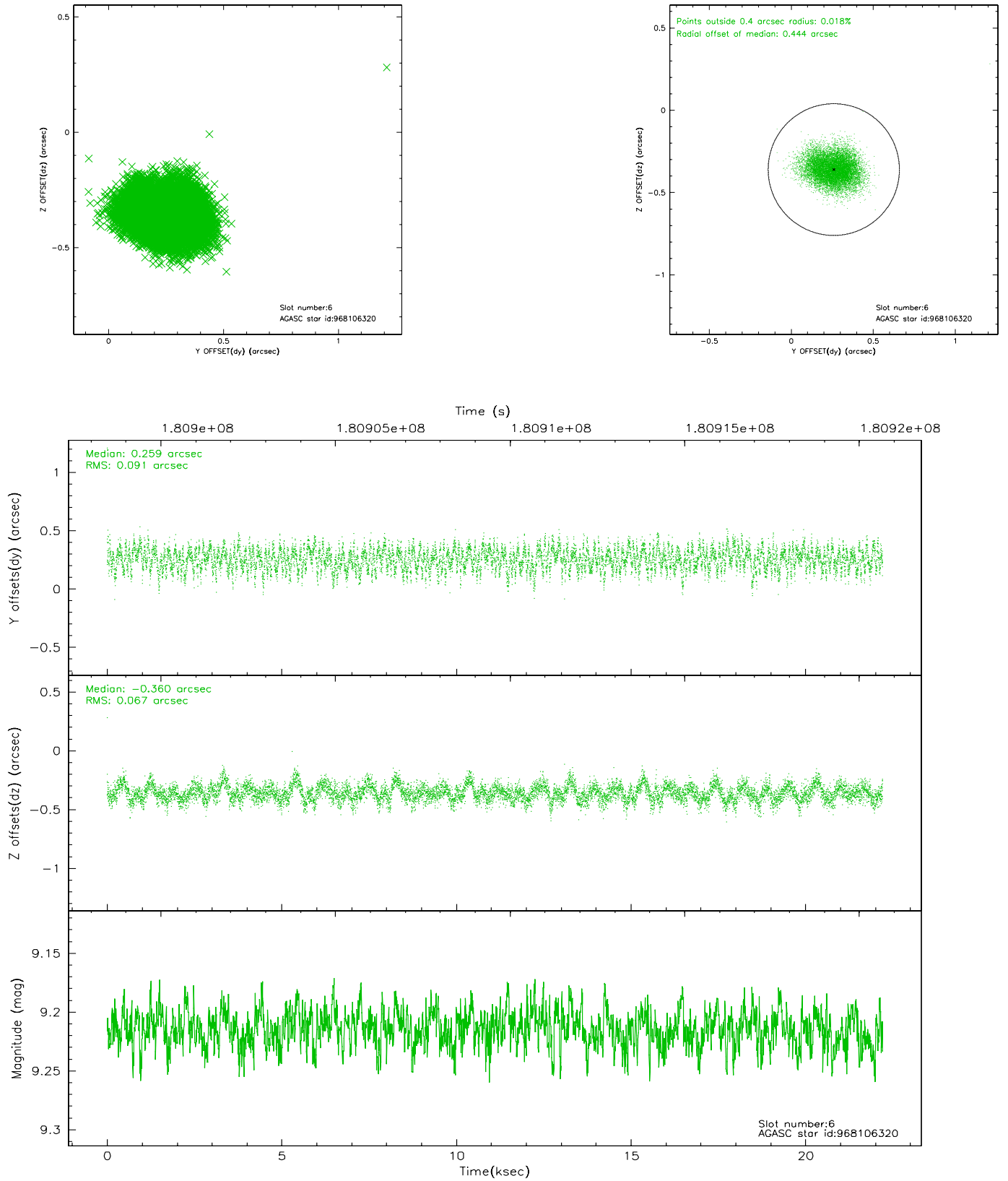
2.4.2 Slot 4



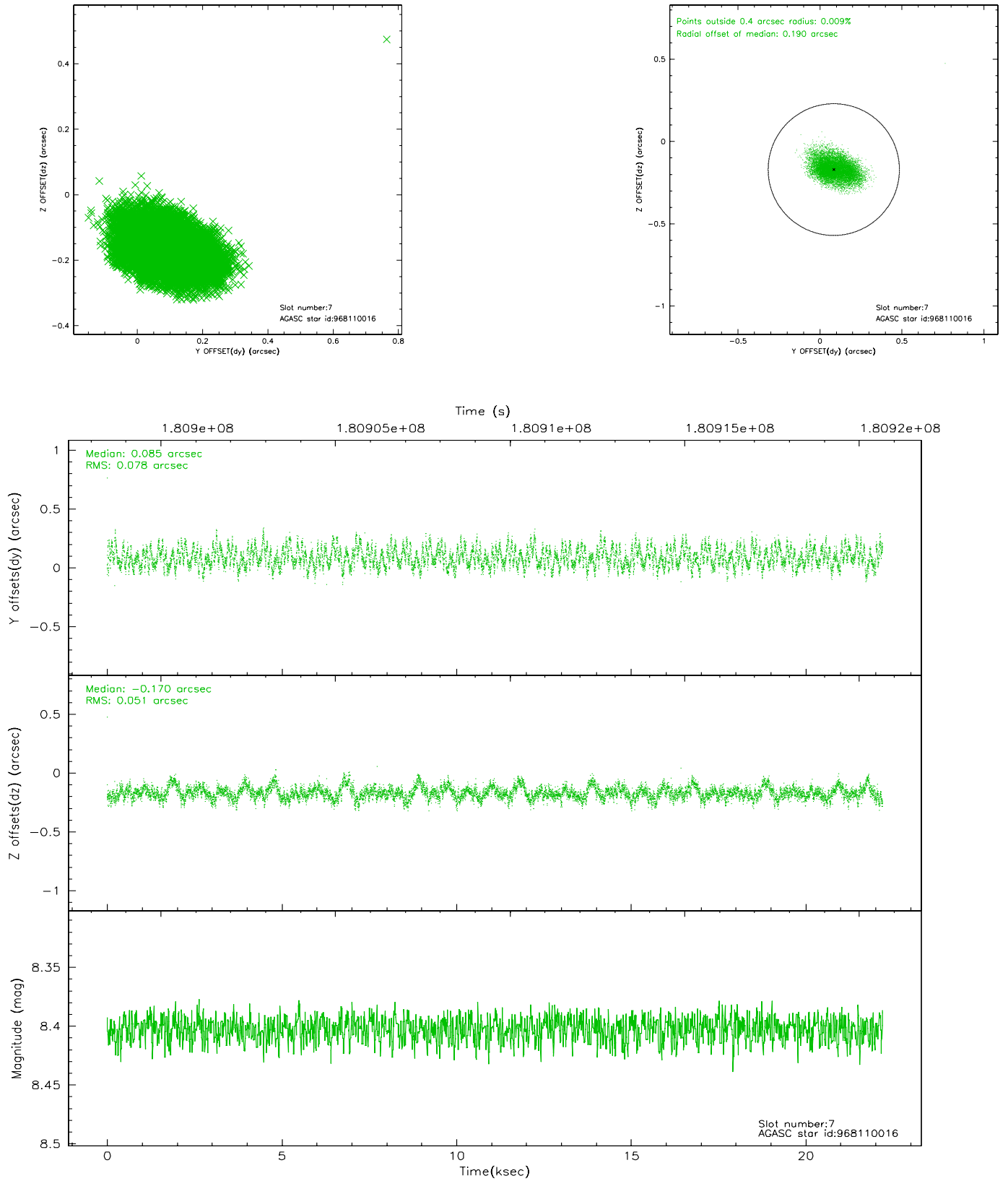
2.4.3 Slot 5



2.4.4 Slot 6

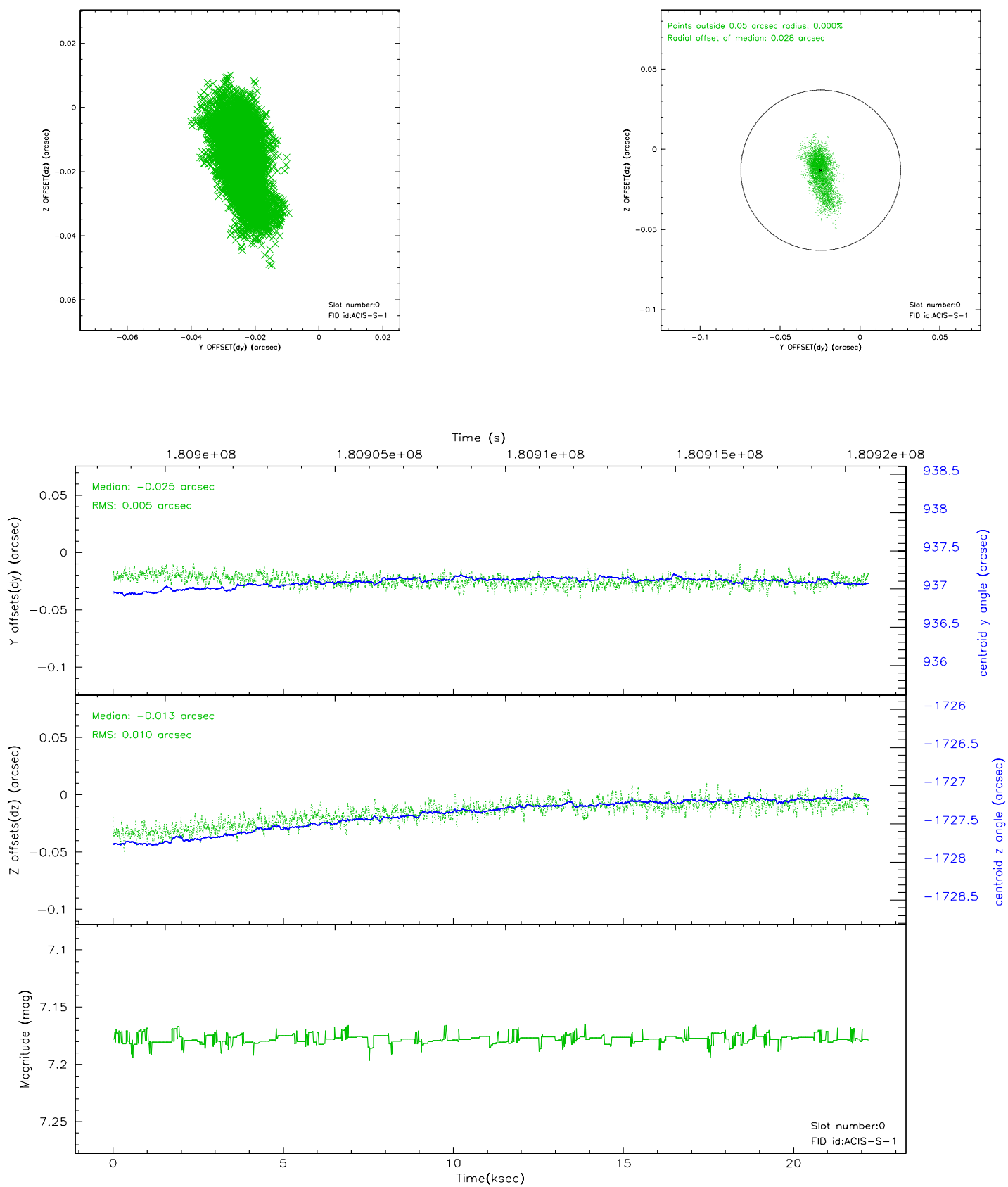


2.4.5 Slot 7

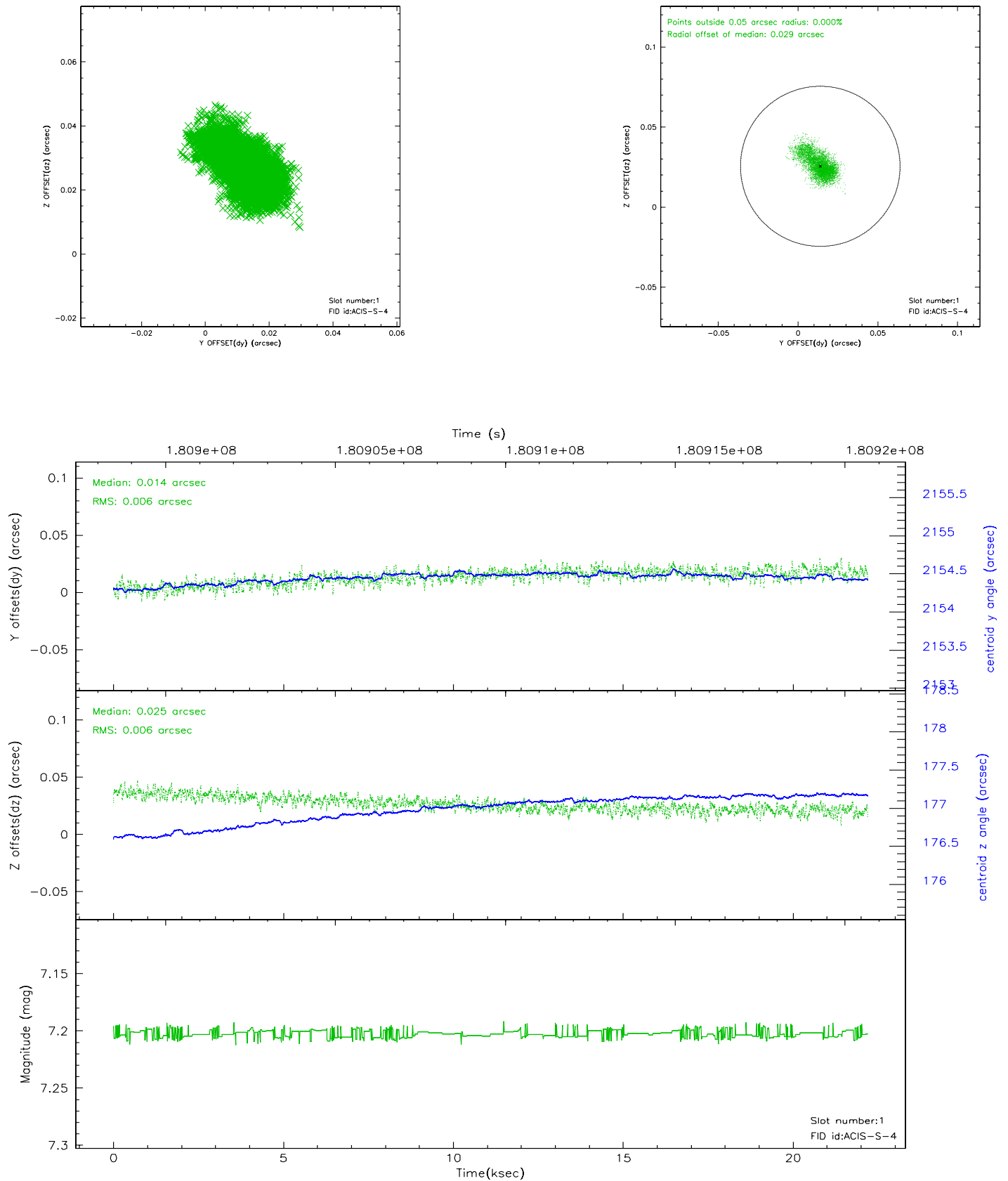


2.5 FID Slots

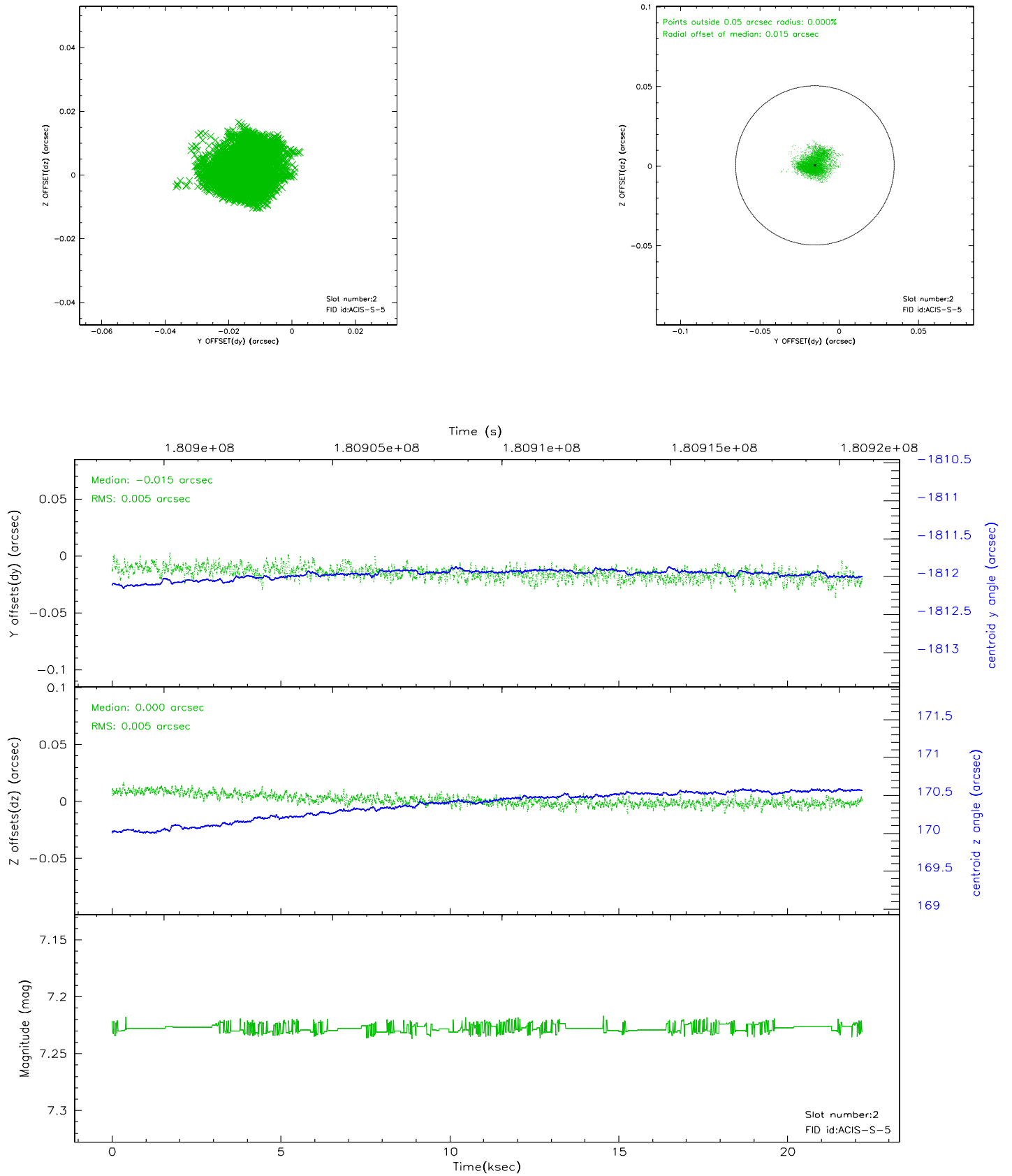
2.5.1 Slot 0



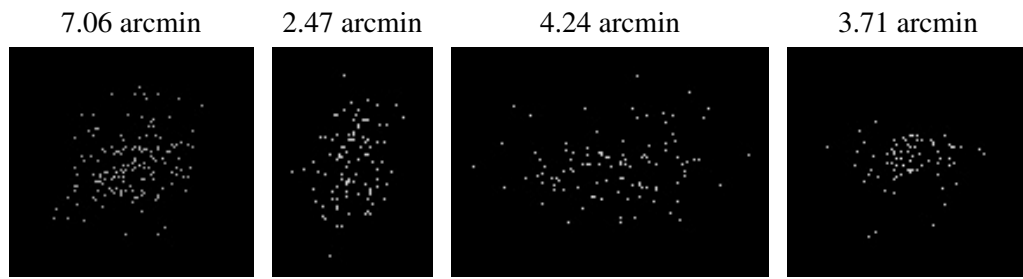
2.5.2 Slot 1



2.5.3 Slot 2



3 Point Sources



A Summary

A.1 Status

V&V Scientist	Beth Sundheim
V&V Date (YYYY-MM-DD)	2006.07.03
V&V Edition	1
V&V Disposition and Status	OK
V&V Charge Time	22.209

A.2 Comments