

V&V Reference Report

L2 ASCDS Version : 7.6.8.1

Observation 4433 - L2 Version 001
Chandra X-Ray Center

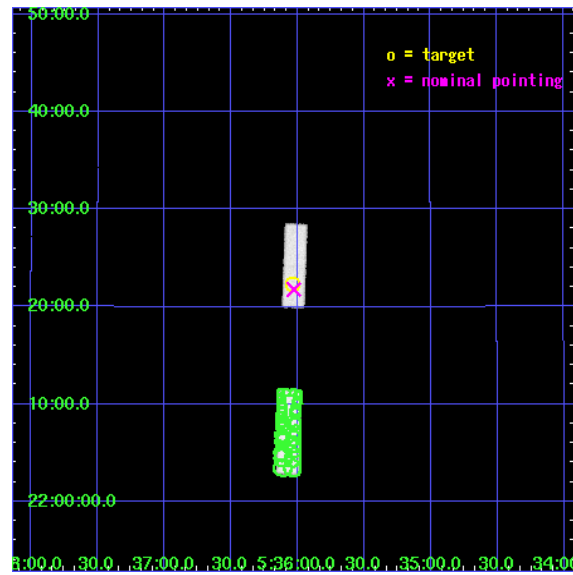
L2 Processing Date : Aug 4 2006

Contents

1	Front	2
2	OBI	3
2.1	OBI	3
2.1.1	Images	3
2.1.2	Bias	3
2.1.3	Parameters	4
2.1.4	Events	4
2.2	Compared Parameters	5
2.3	Aspect	6
2.4	Star Slots	9
2.4.1	Slot 3	9
2.4.2	Slot 4	10
2.4.3	Slot 5	11
2.4.4	Slot 6	12
2.4.5	Slot 7	13
2.5	FID Slots	14
2.5.1	Slot 0	14
2.5.2	Slot 1	15
2.5.3	Slot 2	16
3	Point Sources	17
A	Summary	18
A.1	Status	18
A.2	Comments	18

1 Front

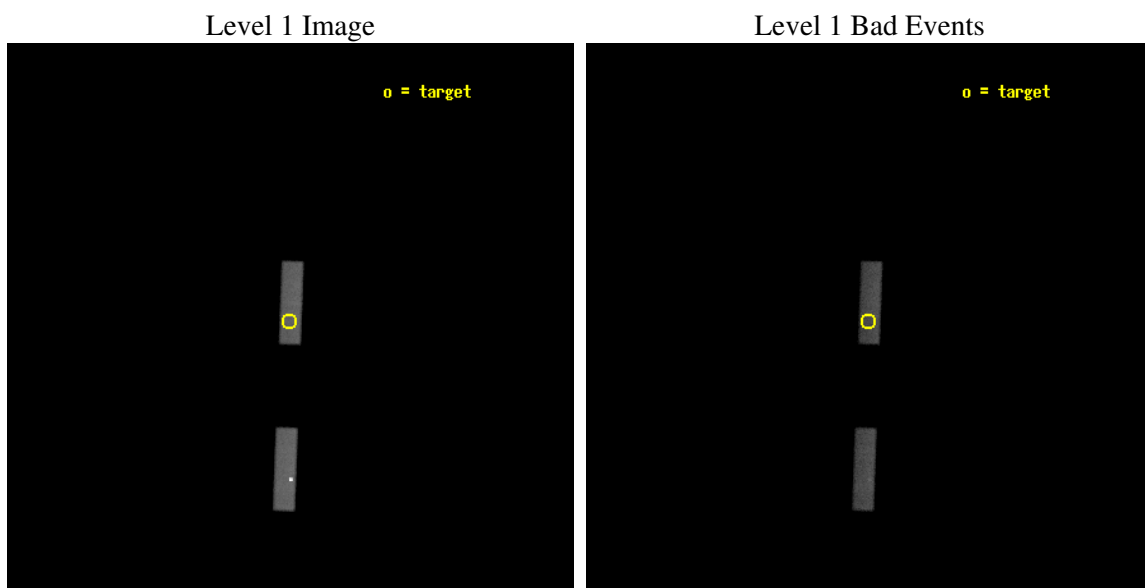
seq_num	100035
obs_id	4433
title	SPATIALLY RESOLVED X-RAY EMISSION FROM SATURN
observer	Dr Jan-Uwe Ness
object	SATURN
dtcycle	0
cycle	P
ra_targ	84.0083
dec_targ	22.37283
ra_nom	84.006840477447
dec_nom	22.363256212042
roll_nom	272.03270781649
revision	2
ontime	35261.018173426
liveltime	33723.238497921
ontime5	35261.018173426
ontime7	35261.018173426
l2events	88659



2 OBI

2.1 OBI

2.1.1 Images



2.1.2 Bias

Chip 5

Chip 7



2.1.3 Parameters

obi_num	0
ascdsver	7.6.8.1
caldbver	3.2.2
date	2006-08-04T18:53:02
revision	2

sched_exp_time	35428.377000
ontime	35262.210619837
ontime5	35262.210619837
ontime7	35262.210619837
l1events	208811

2.1.4 Events

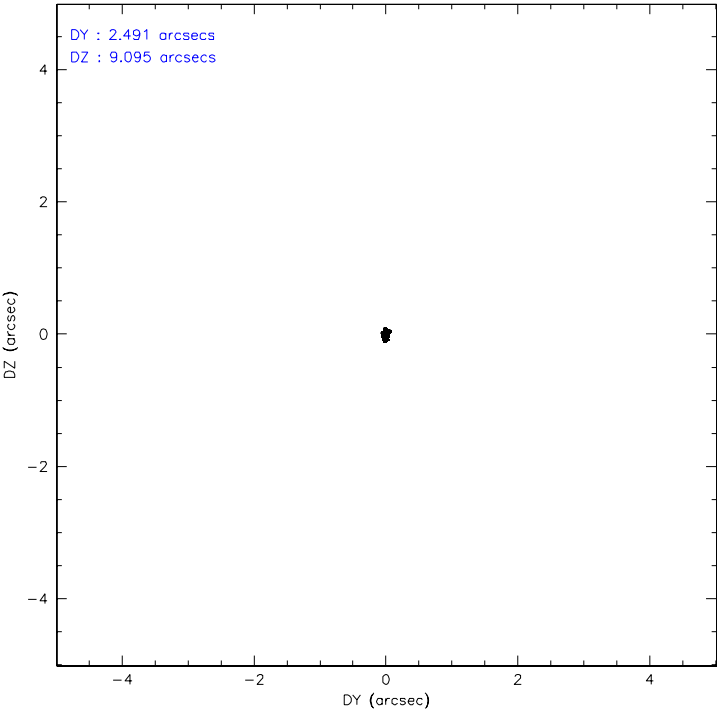
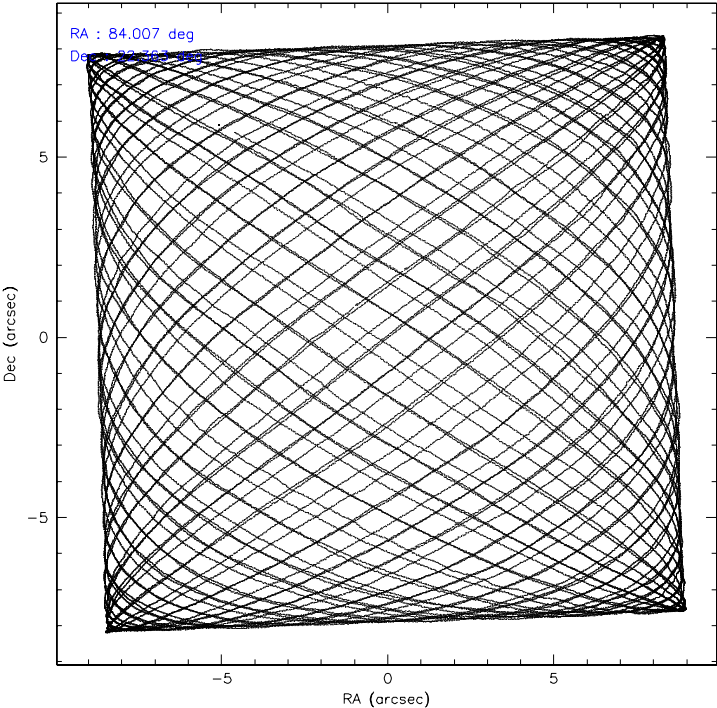
	ccd 5	ccd 7
level 1 events	123957	84854
rejected events	44744	43704
rejected %	36%	51%

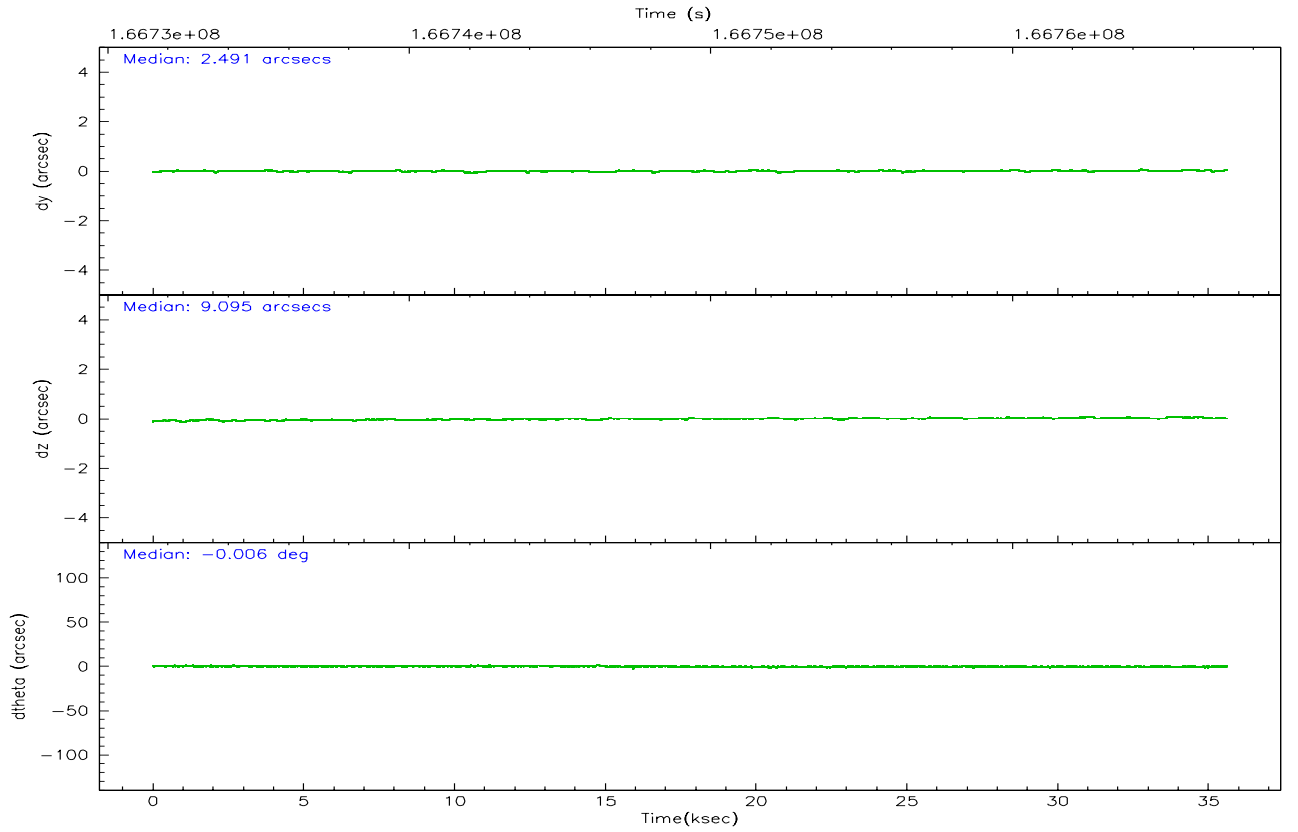
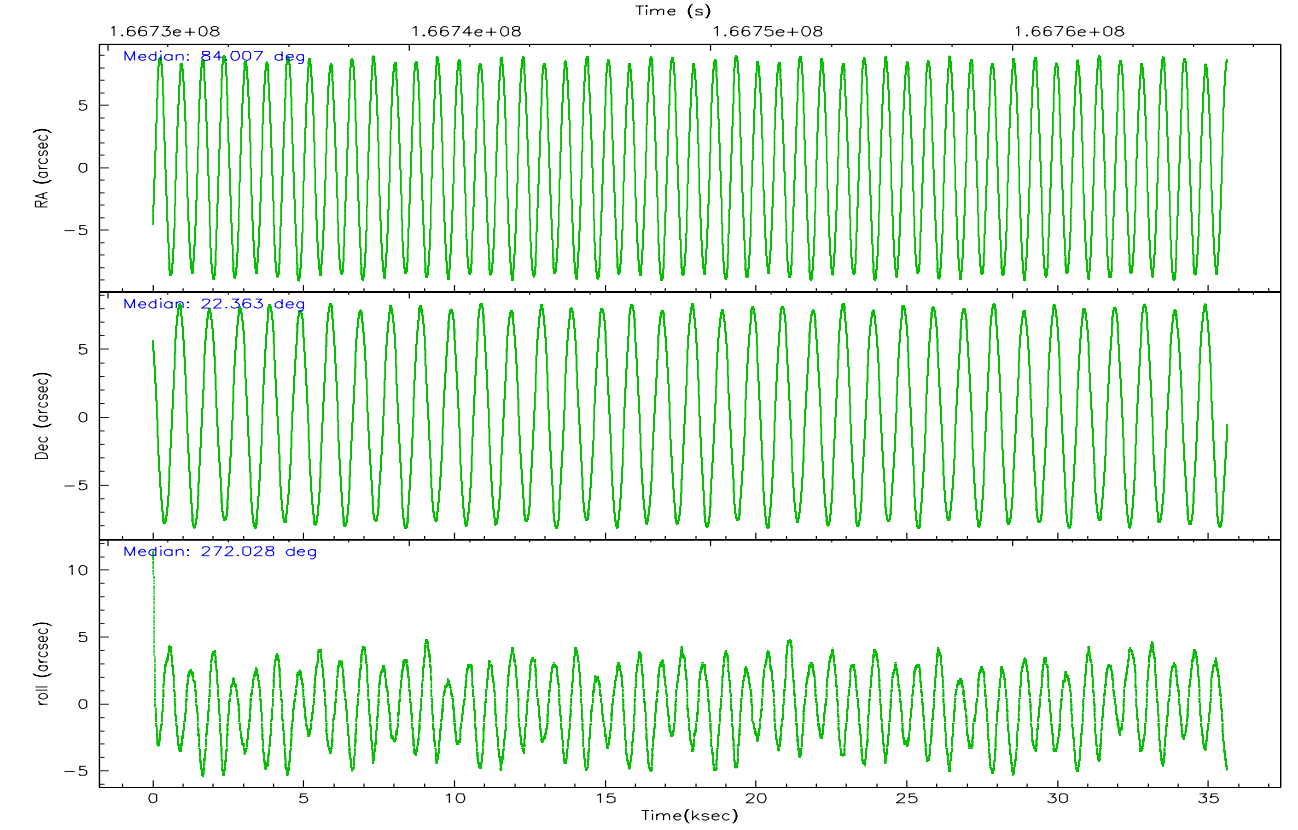
	ccd 5	ccd 7
grade 0 events	32542	3896
	26%	4%
grade 1 events	242	49
	0%	0%
grade 2 events	18020	9493
	14%	11%
grade 3 events	2547	3089
	2%	3%
grade 4 events	2047	3001
	1%	3%
grade 5 events	4173	5394
	3%	6%
grade 6 events	24062	21678
	19%	25%
grade 7 events	40324	38254
	32%	45%

2.2 Compared Parameters

Parameter	Planned	Actual	Parameter	Planned	Actual
Instrument	ACIS	ACIS	Obspar format version number	6	6
Detector	ACIS-57	ACIS-57	Obspar file type	PREDICTED	ACTUAL
Grating	NONE	NONE	Obspar update status	NONE	UPDATED
Data mode	VFAINT	VFAINT	On-chip summing requested	N	N
Observation mode	POINTING	POINTING	Subarray requested	1/4	1/4
Pointing RA	83.990883	84.0068404774474	Subarray start row	0	385
Pointing Dec	22.386144	22.36325621204168	Subarray row count	1024	256
Pointing Roll	271.882158	272.0327078164877	Alternating exposures requested	N	N
SIM focus pos (mm)	-0.684267	-0.6828225247311905	Primary exposure time	0.000000	0.9
SIM defocus (mm)	0	0.001444936568705701			
SIM translation stage pos (mm)	-190.132523	-190.1400660498719			
SIM translation stage offset (mm)	0	0.00754346686406393			
Observation start time	166731698.184000	166731321.63153			
Observation start date	2003-04-14T18:20:34	2003-04-14T18:15:21			
Observation end time	166767126.184000	166767440.58306			
Observation end date	2003-04-15T04:11:02	2003-04-15T04:17:20			
Read mode	TIMED	TIMED			

2.3 Aspect



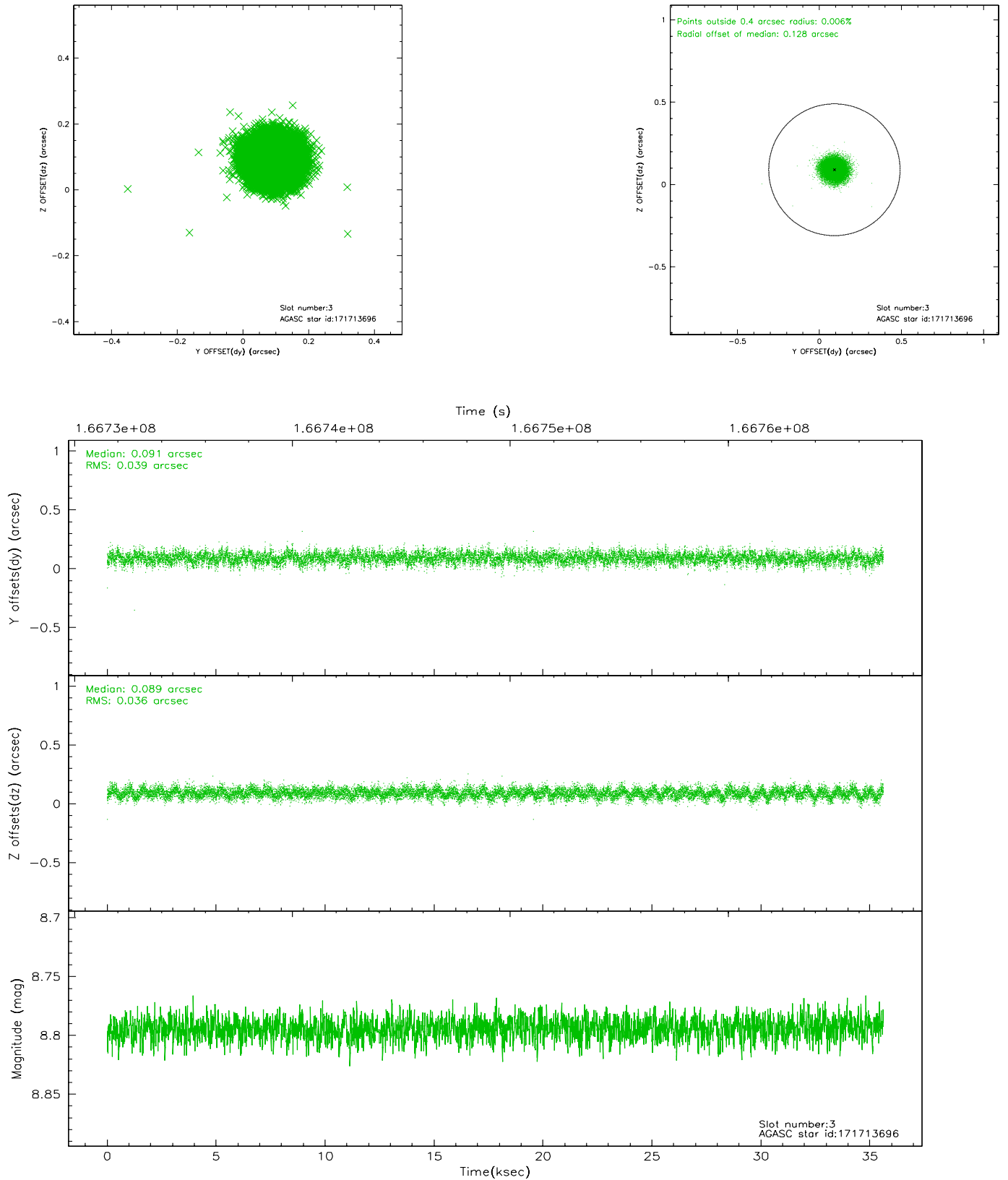


Slot Statistics

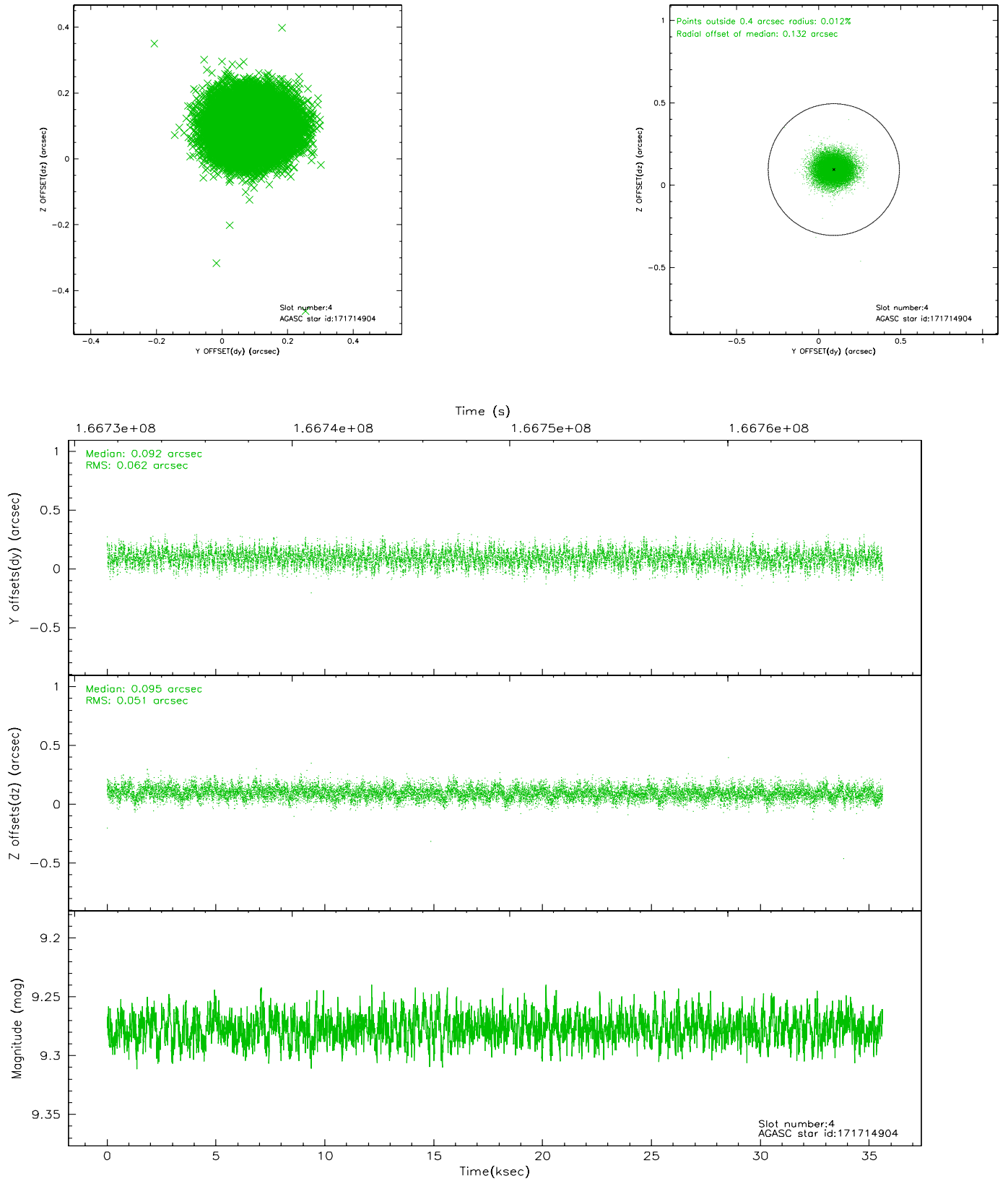
slot	status	id	mag	n_pts	med_dy	med_dz	dr1	dr2	ra	dec	mean_y	mean_z
0	FID	ACIS-S-1	7.19	8685	-0.012	0.055	0.007	0.011	0.000000	0.000000	940.92	-1725.88
1	FID	ACIS-S-5	7.24	8685	0.019	0.019	0.006	0.010	0.000000	0.000000	-1808.04	171.59
2	FID	ACIS-S-6	7.36	8686	-0.029	-0.062	0.008	0.013	0.000000	0.000000	406.40	815.52
3	GUIDE	171713696	8.79	17368	0.091	0.089	0.056	0.091	84.473197	21.894804	1818.39	1552.58
4	GUIDE	171714904	9.28	17366	0.092	0.095	0.087	0.138	84.565036	22.013202	1401.64	1871.70
5	GUIDE	242223104	8.60	17367	-0.189	-0.190	0.094	0.145	83.329008	22.957429	-2132.33	-2125.34
6	GUIDE	243941560	8.29	17365	0.001	-0.094	0.071	0.114	83.733264	22.568598	-685.19	-834.58
7	GUIDE	171720040	9.30	17364	0.011	0.107	0.084	0.134	84.493575	22.465216	-232.35	1681.00

2.4 Star Slots

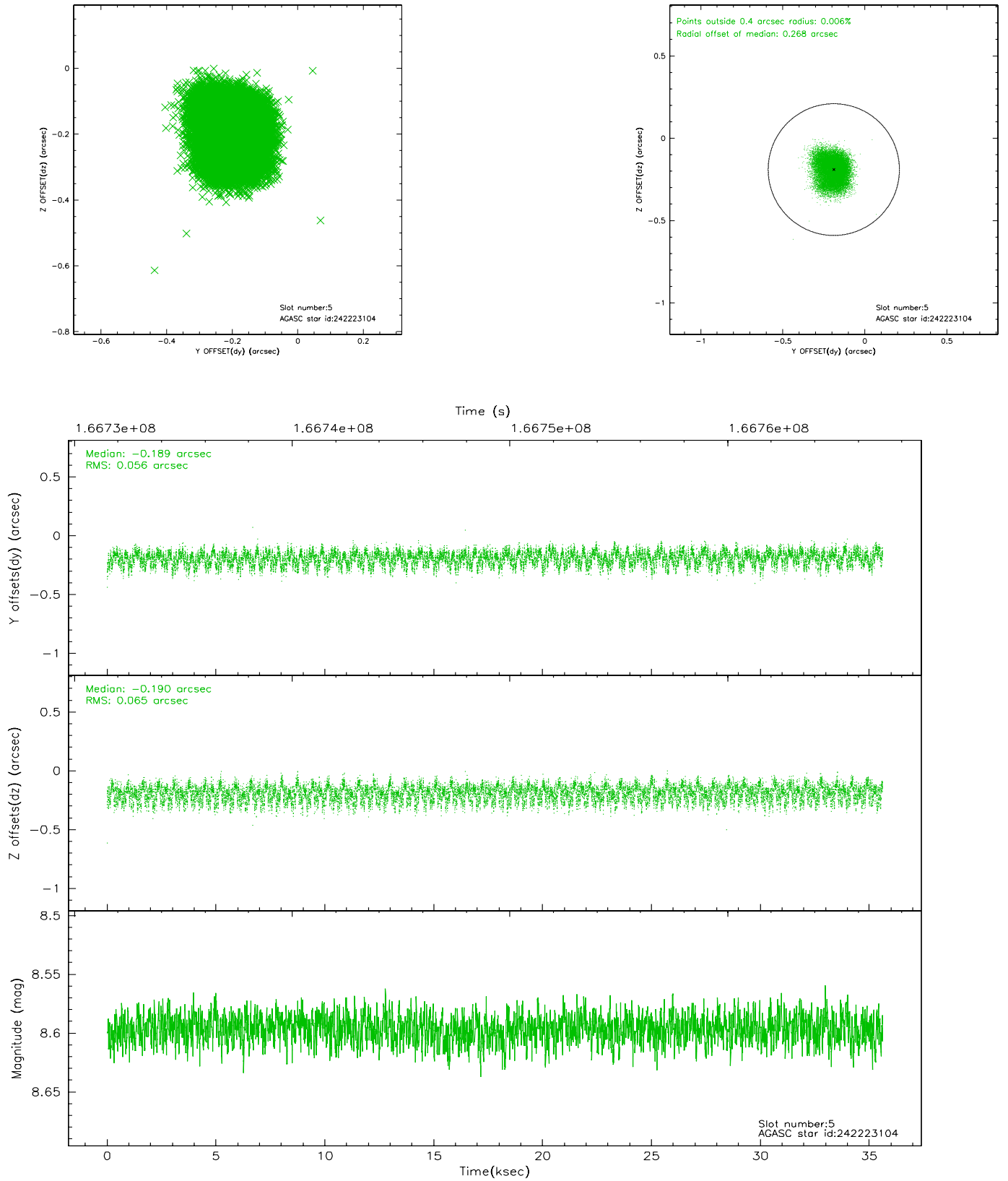
2.4.1 Slot 3



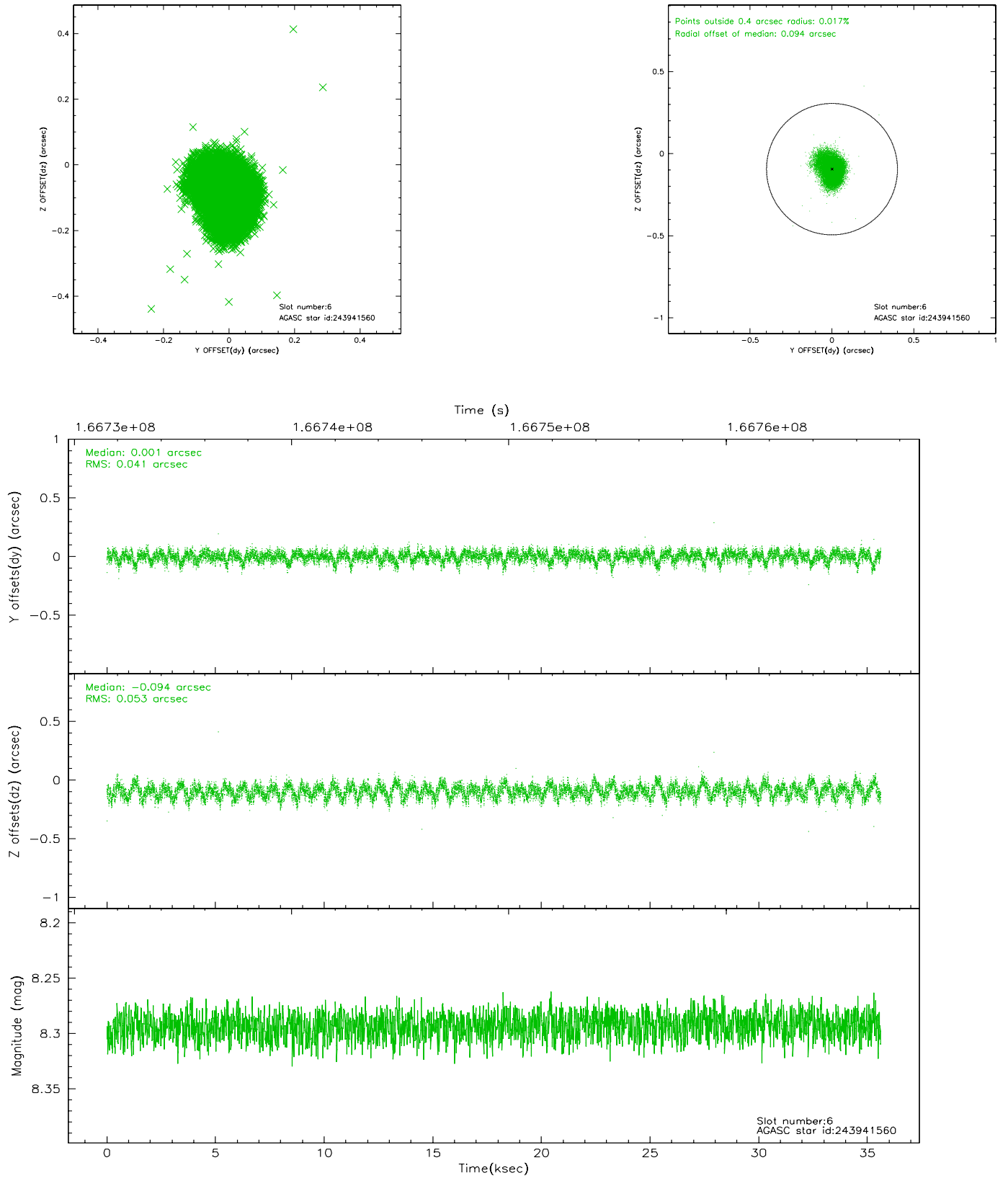
2.4.2 Slot 4



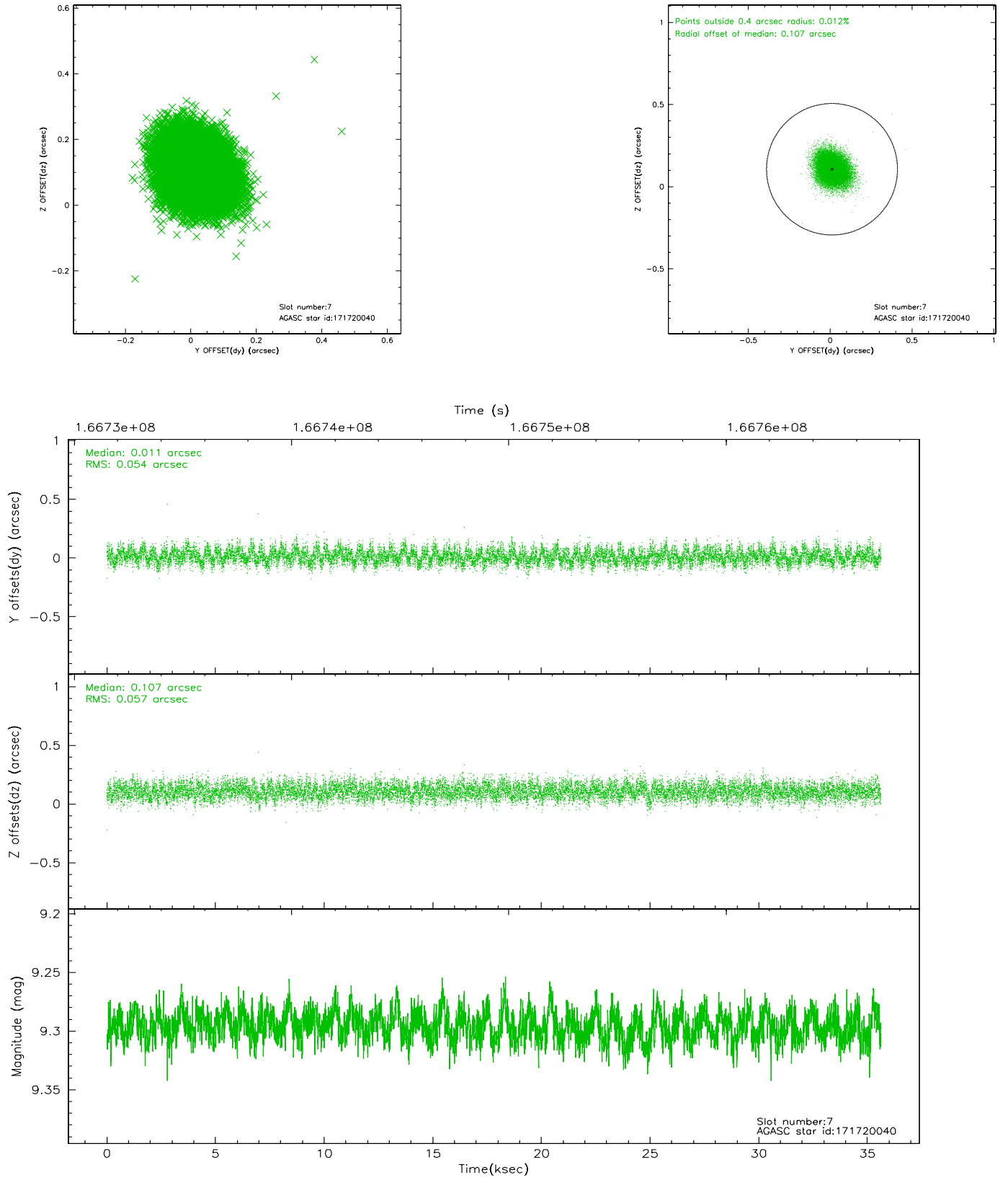
2.4.3 Slot 5



2.4.4 Slot 6

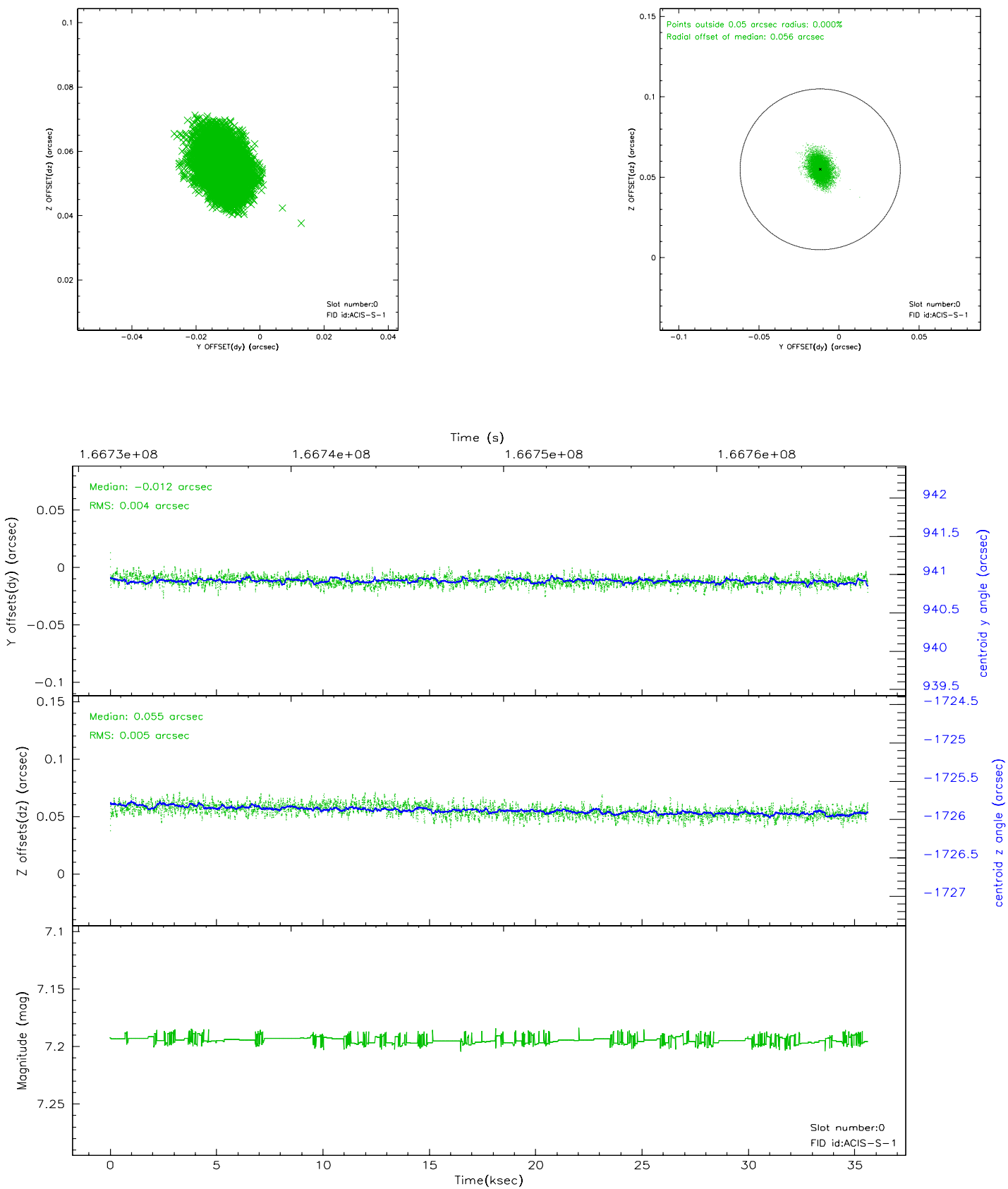


2.4.5 Slot 7

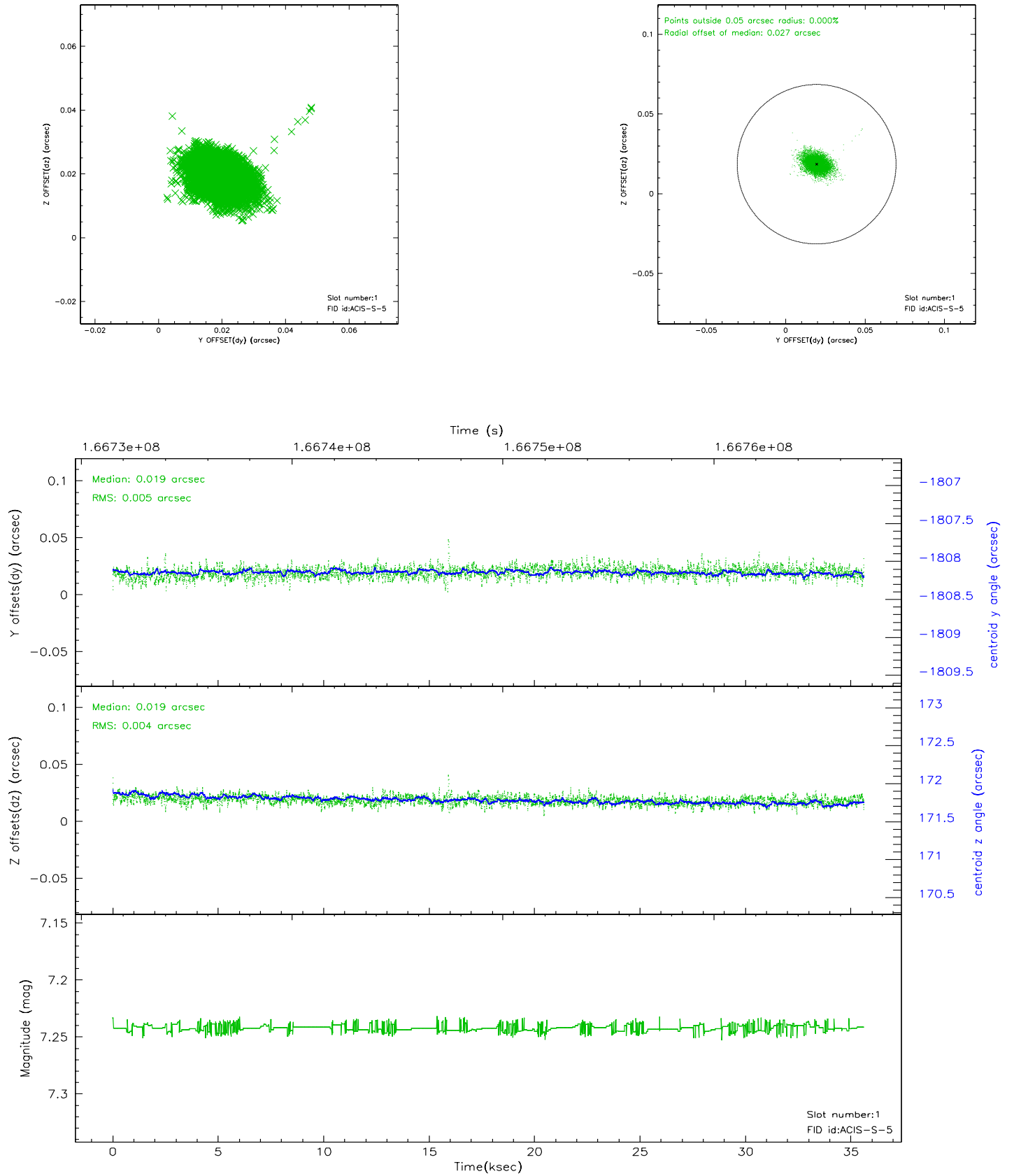


2.5 FID Slots

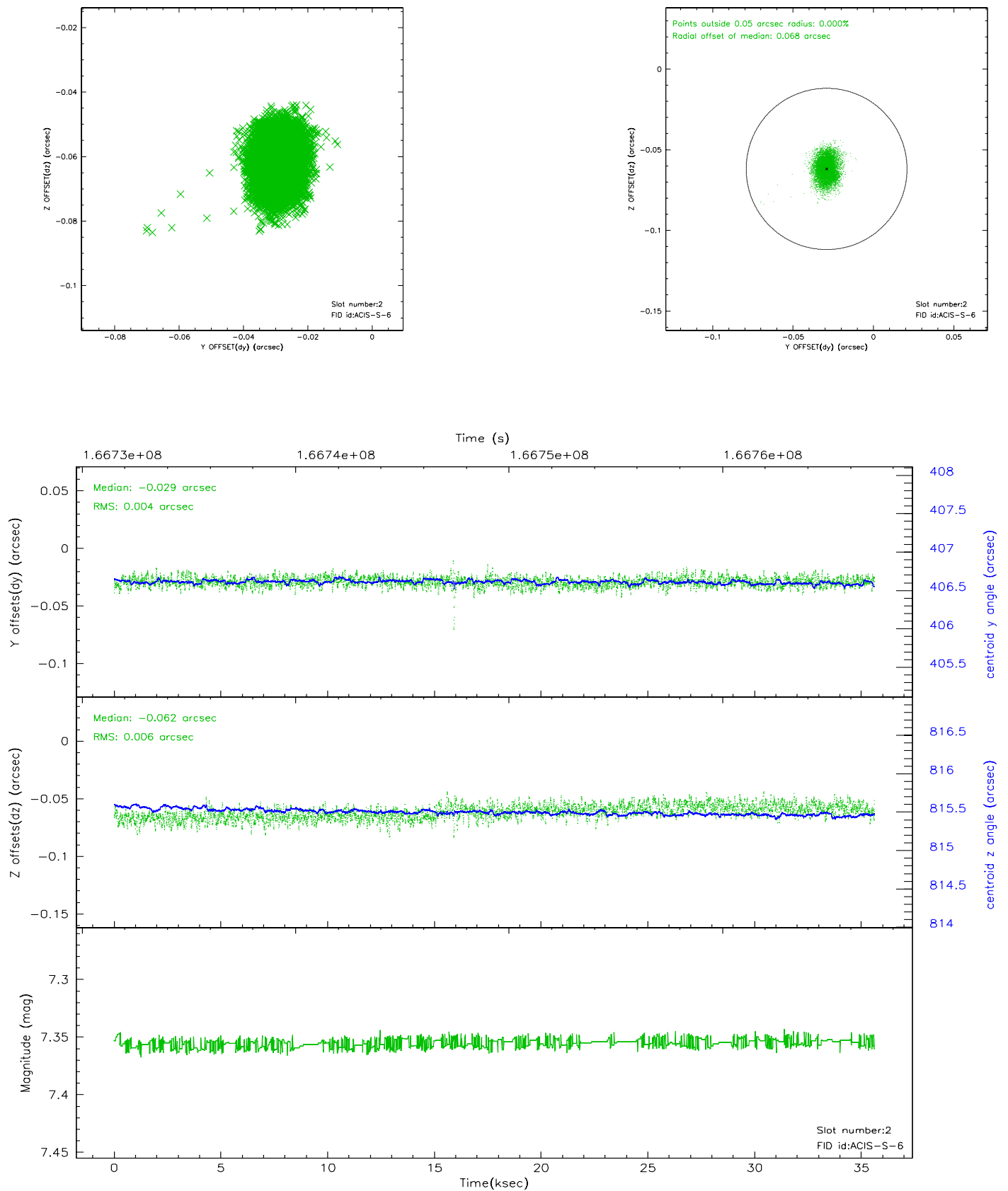
2.5.1 Slot 0



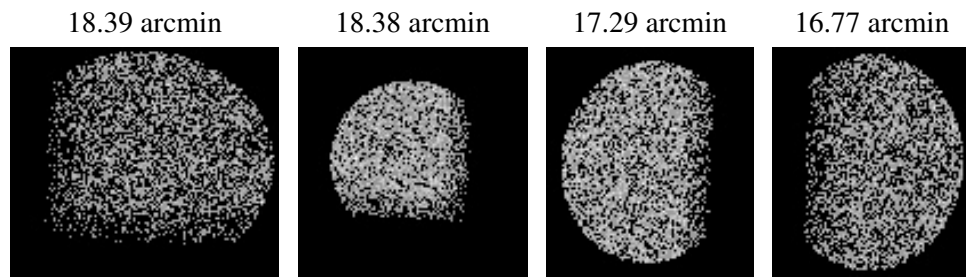
2.5.2 Slot 1



2.5.3 Slot 2



3 Point Sources



A Summary

A.1 Status

V&V Scientist	Beth Sundheim
V&V Date (YYYY-MM-DD)	2006.08.06
V&V Edition	1
V&V Disposition and Status	OK
V&V Charge Time	35.261

A.2 Comments