

# V&V Reference Report

## L2 ASCDS Version : 7.6.8.1

Observation 4418 - L2 Version 001  
Chandra X-Ray Center

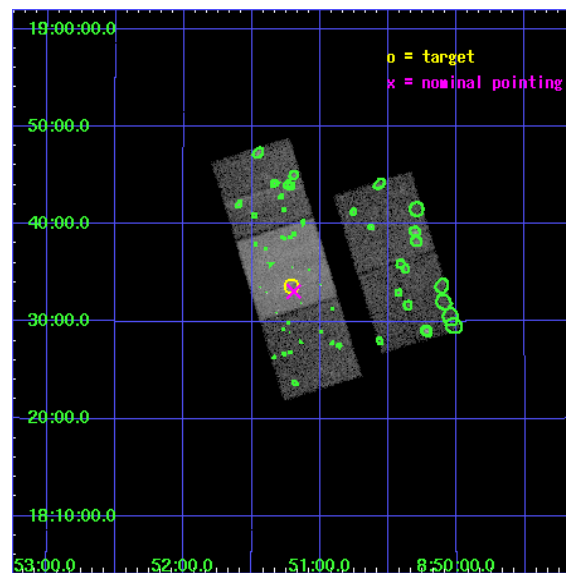
L2 Processing Date : Aug 18 2006

## Contents

<b>1</b>	<b>Front</b>	<b>2</b>
<b>2</b>	<b>OBI</b>	<b>3</b>
2.1	OBI . . . . .	3
2.1.1	Images . . . . .	3
2.1.2	Bias . . . . .	3
2.1.3	Parameters . . . . .	4
2.1.4	Events . . . . .	4
2.2	Compared Parameters . . . . .	5
2.3	Aspect . . . . .	6
2.4	Star Slots . . . . .	9
2.4.1	Slot 3 . . . . .	9
2.4.2	Slot 4 . . . . .	10
2.4.3	Slot 5 . . . . .	11
2.4.4	Slot 6 . . . . .	12
2.4.5	Slot 7 . . . . .	13
2.5	FID Slots . . . . .	14
2.5.1	Slot 0 . . . . .	14
2.5.2	Slot 1 . . . . .	15
2.5.3	Slot 2 . . . . .	16
<b>3</b>	<b>Point Sources</b>	<b>17</b>
<b>A</b>	<b>Summary</b>	<b>18</b>
A.1	Status . . . . .	18
A.2	Comments . . . . .	18

# 1 Front

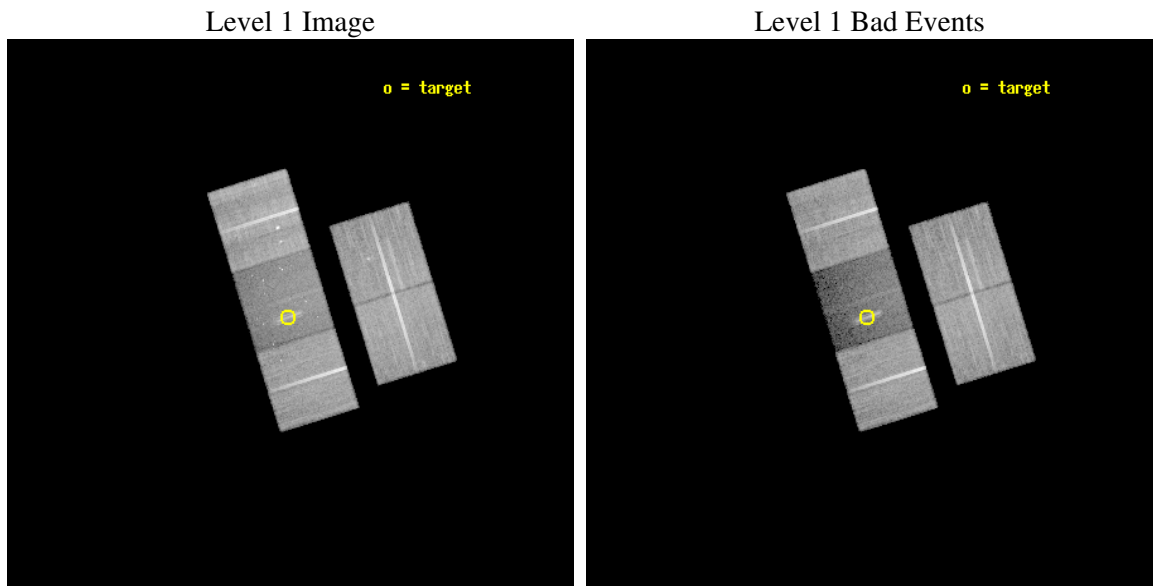
seq_num	100036
obs_id	4418
title	MULTIWAVELENGTH OBSERVATIONS OF JUPITER'S AURORAL HOT SPOT
observer	Dr. Ronald Elsner
object	JUPITER
dtcycle	0
cycle	P
ra_targ	132.80266
dec_targ	18.56011
ra_nom	132.79798525865
dec_nom	18.5515275677
roll_nom	252.78566516199
revision	3
ontime	41273.399920642
livetime	40734.132565644
ontime2	41270.258940428
ontime3	41267.117940277
ontime6	41270.258940399
ontime7	41273.399920642
ontime8	41273.399920642
l2events	110269



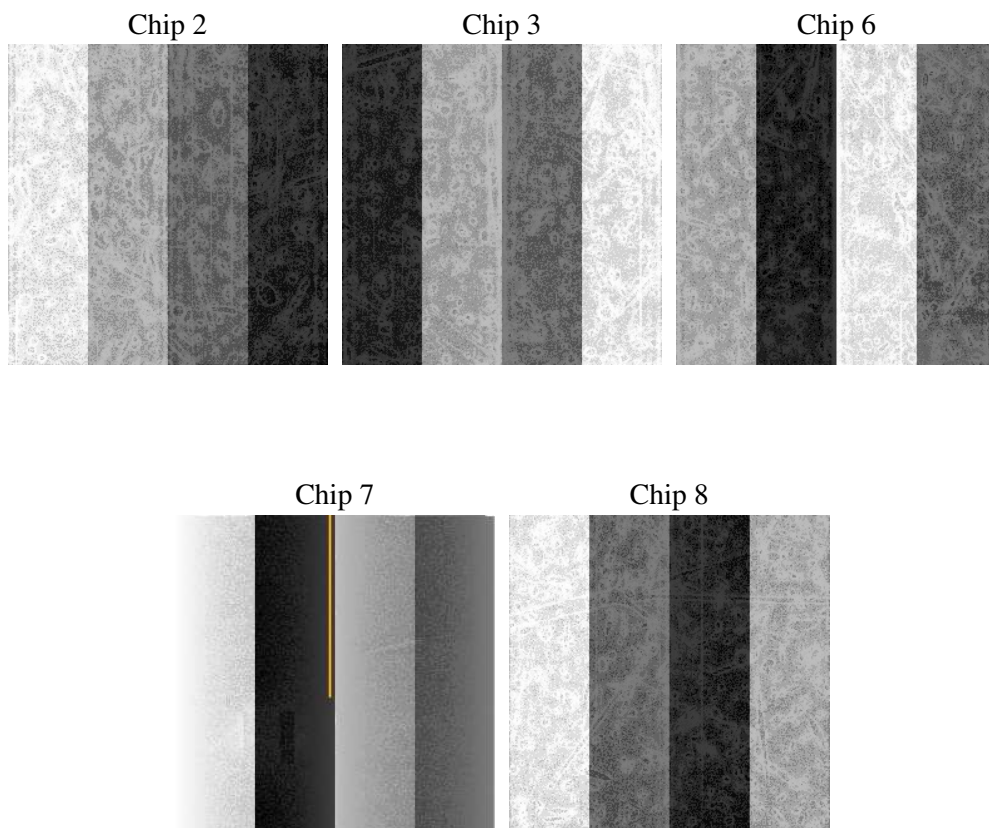
## 2 OBI

### 2.1 OBI

#### 2.1.1 Images



#### 2.1.2 Bias



### 2.1.3 Parameters

obi_num	0
ascdsver	7.6.8.1
caldbver	3.2.3
date	2006-08-18T20:09:37
revision	3

sched_exp_time	41182.000000
ontime	41279.155735403
ontime2	41276.014755189
ontime3	41272.873755038
ontime6	41276.01475516
ontime7	41279.155735403
ontime8	41279.155735403
llevents	901831

### 2.1.4 Events

	ccd 2	ccd 3	ccd 6	ccd 7	ccd 8
level 1 events	197676	185529	184110	109775	224741
rejected events	181893	169375	167287	57381	170577
rejected %	92%	91%	90%	52%	75%

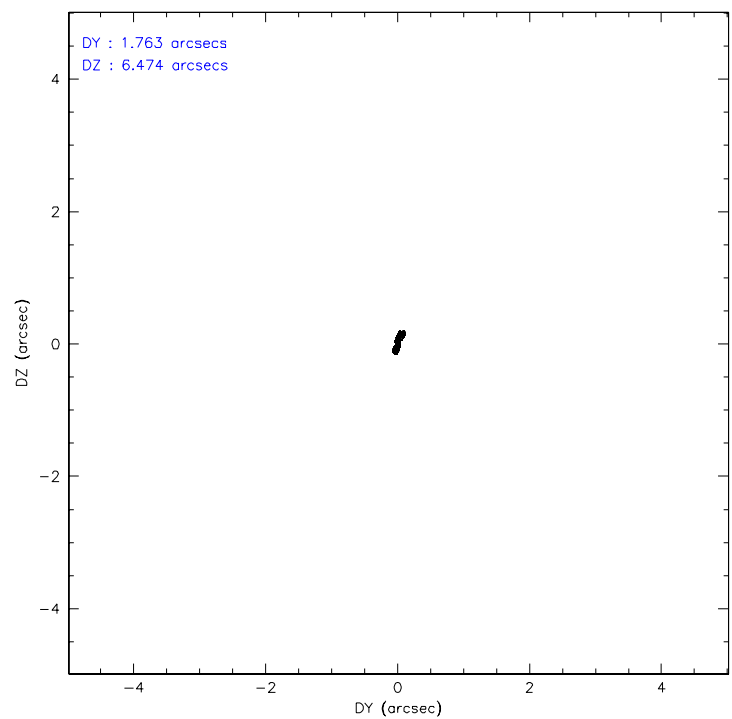
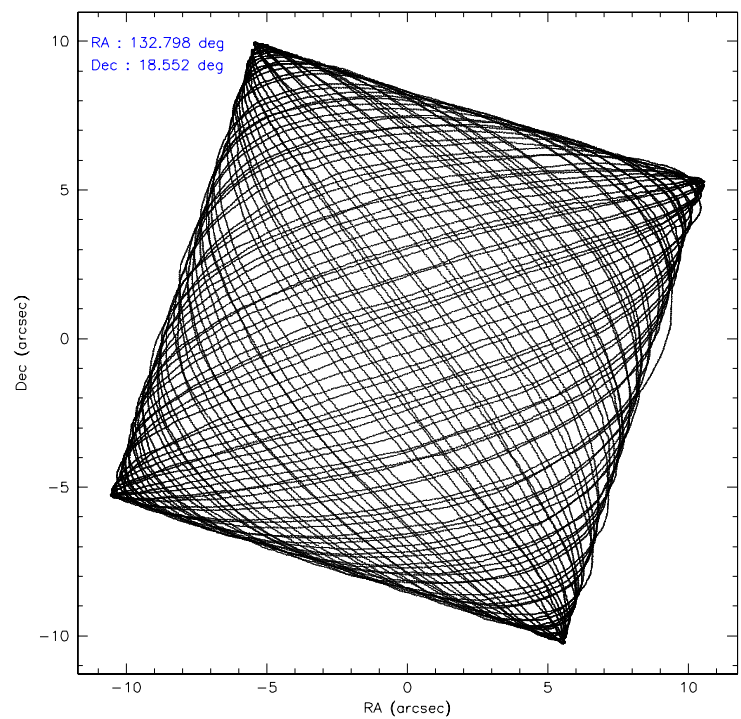
	ccd 2	ccd 3	ccd 6	ccd 7	ccd 8
grade 0 events	6476	6877	6771	5020	17017
	3%	3%	3%	4%	7%
grade 1 events	88	105	71	141	138
	0%	0%	0%	0%	0%
grade 2 events	3573	3171	3417	13521	12062
	1%	1%	1%	12%	5%
grade 3 events	1780	1934	1981	3297	5955
	0%	1%	1%	3%	2%
grade 4 events	1830	1750	1998	3205	5562
	0%	0%	1%	2%	2%
grade 5 events	2798	3539	3616	8602	6234
	1%	1%	1%	7%	2%
grade 6 events	2125	2427	2661	27356	13574
	1%	1%	1%	24%	6%
grade 7 events	179006	165726	163595	48633	164199
	90%	89%	88%	44%	73%

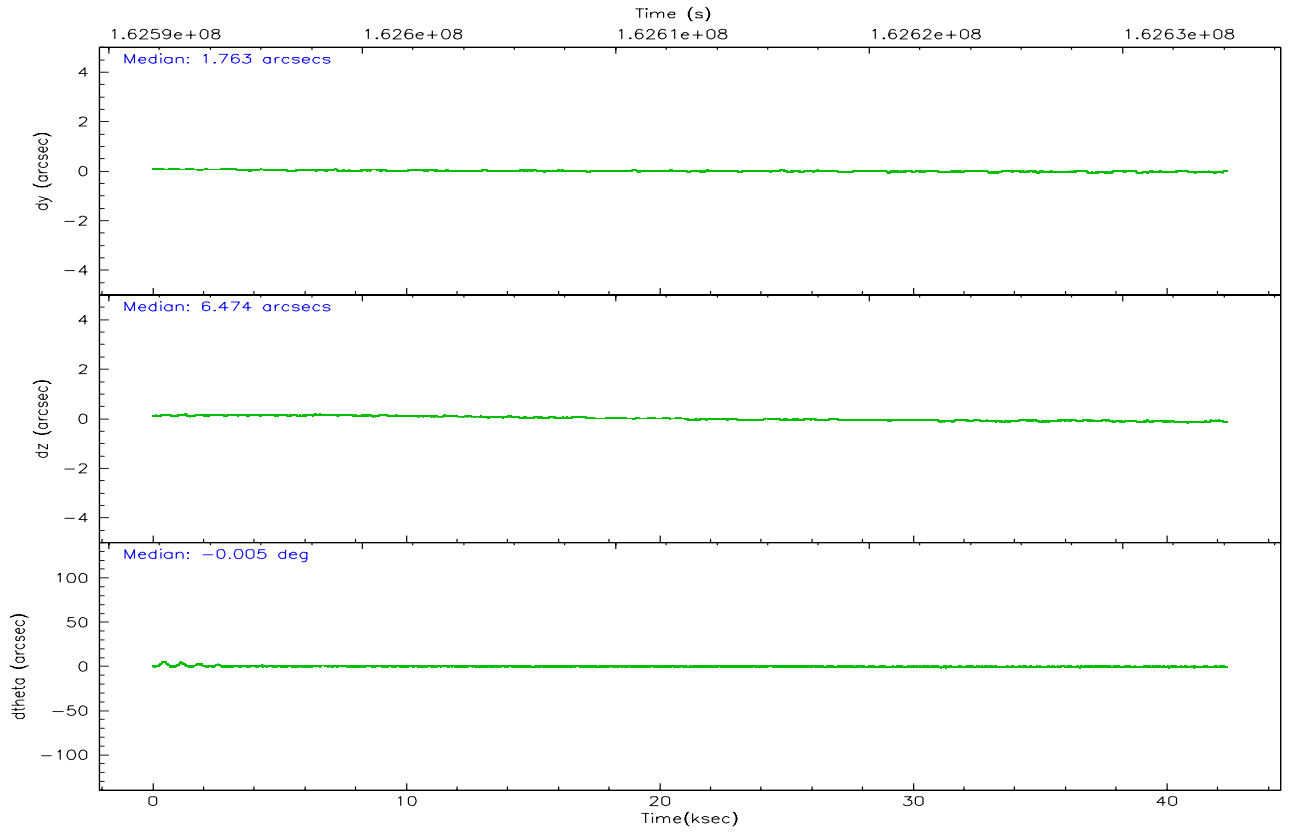
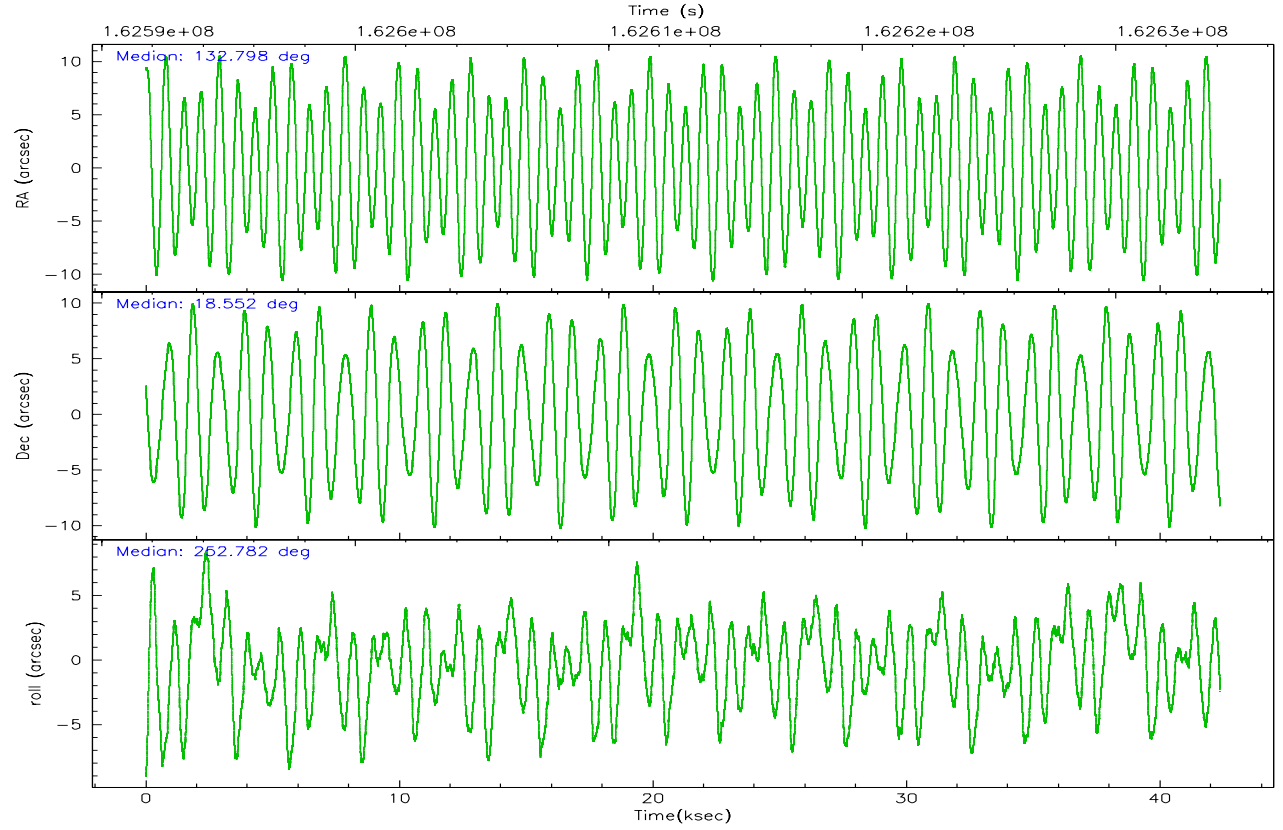


## 2.2 Compared Parameters

Parameter	Planned	Actual	Parameter	Planned	Actual
Instrument	ACIS	ACIS	Obspar format version number	6	6
Detector	ACIS-23678	ACIS-23678	Obspar file type	PREDICTED	ACTUAL
Grating	NONE	NONE	Obspar update status	NONE	UPDATED
Data mode	VFAINT	VFAINT	On-chip summing requested	N	N
Observation mode	POINTING	POINTING	Subarray requested	NONE	NONE
Pointing RA	132.791250	132.7979852586499	Alternating exposures requested	N	N
Pointing Dec	18.577986	18.55152756770011	Primary exposure time	0.000000	3.1
Pointing Roll	252.631184	252.7856651619884			
SIM focus pos (mm)	-0.684267	-0.6828225247311905			
SIM defocus (mm)	0	0.001444936568705701			
SIM translation stage pos (mm)	-190.132523	-190.1400660498719			
SIM translation stage offset (mm)	0	0.00754346686406393			
Observation start time	162592942.184000	162591476.11958			
Observation start date	2003-02-25T20:41:18	2003-02-25T20:17:56			
Observation end time	162634124.184000	162634639.3839			
Observation end date	2003-02-26T08:07:40	2003-02-26T08:17:19			
Read mode	TIMED	TIMED			

## 2.3 Aspect



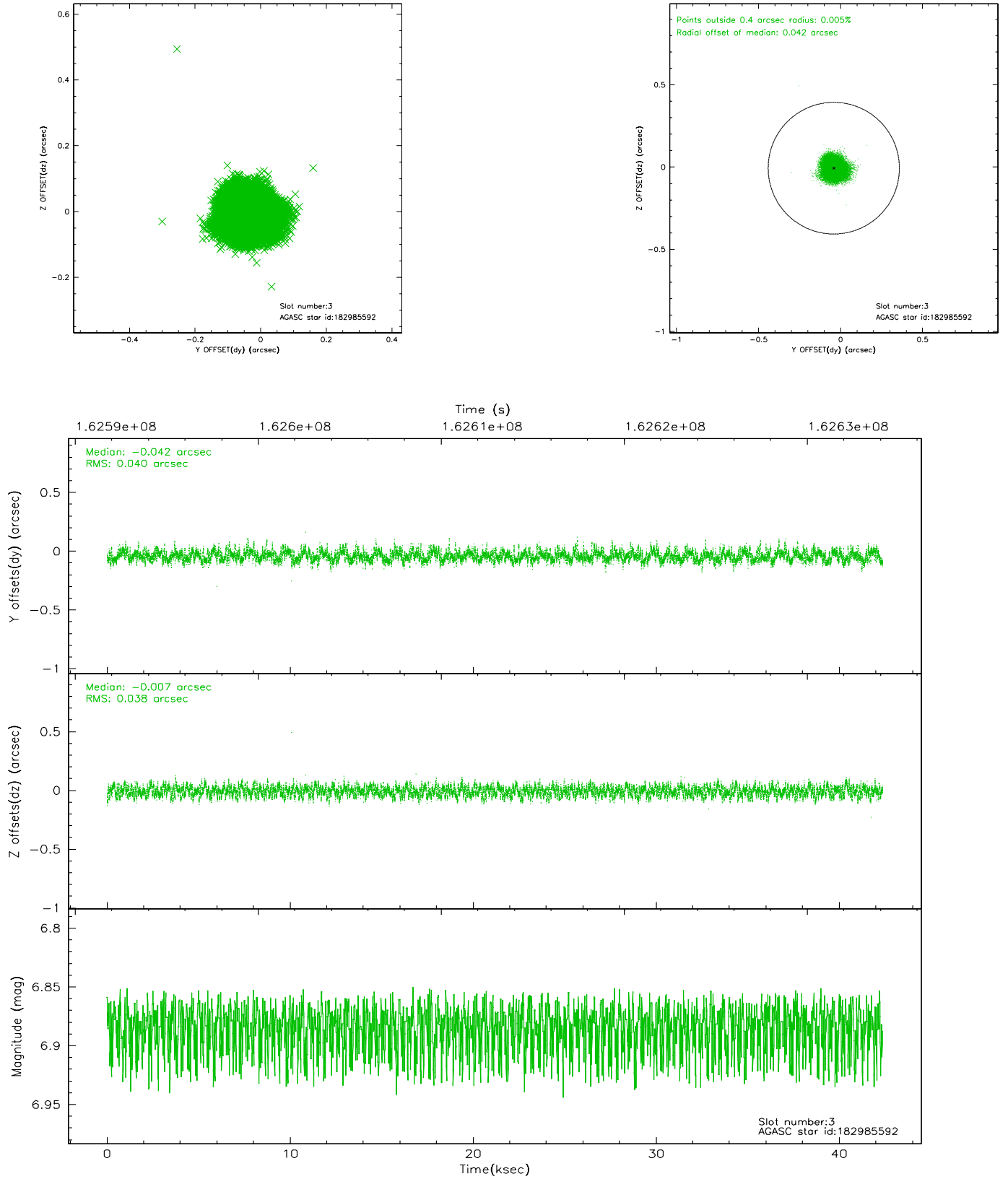


### Slot Statistics

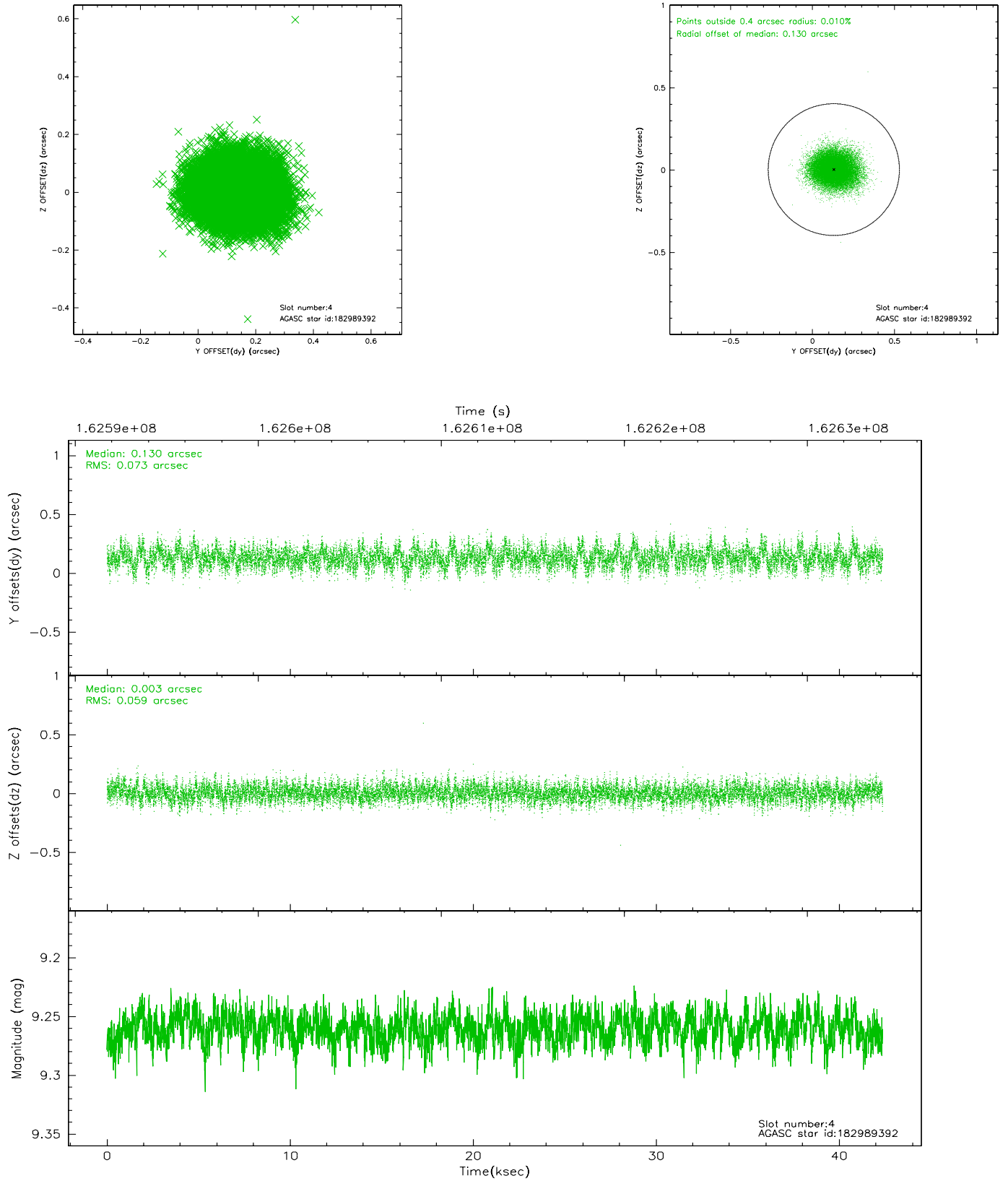
slot	status	id	mag	n_pts	med_dy	med_dz	dr1	dr2	ra	dec	mean_y	mean_z
0	FID	ACIS-S-2	7.11	10334	-0.049	0.011	0.007	0.013	0.000000	0.000000	-754.39	-1727.64
1	FID	ACIS-S-4	7.21	10332	-0.018	0.021	0.005	0.010	0.000000	0.000000	2158.88	180.89
2	FID	ACIS-S-5	7.24	10334	0.036	-0.023	0.006	0.011	0.000000	0.000000	-1807.18	174.46
3	GUIDE	182985592	6.88	20671	-0.042	-0.007	0.060	0.093	132.688010	18.832182	-768.24	-608.65
4	GUIDE	182989392	9.26	20663	0.130	0.003	0.099	0.161	132.825117	17.883707	2350.98	857.41
5	GUIDE	182991352	8.86	20668	-0.089	-0.048	0.078	0.125	132.561076	19.276214	-2165.68	-1497.02
6	GUIDE	182992064	8.37	20664	-0.016	-0.063	0.060	0.097	133.014881	18.894292	-1314.51	387.06
7	GUIDE	182986552	9.66	20605	0.021	0.116	0.143	0.223	133.280093	18.160834	931.93	2044.15

## 2.4 Star Slots

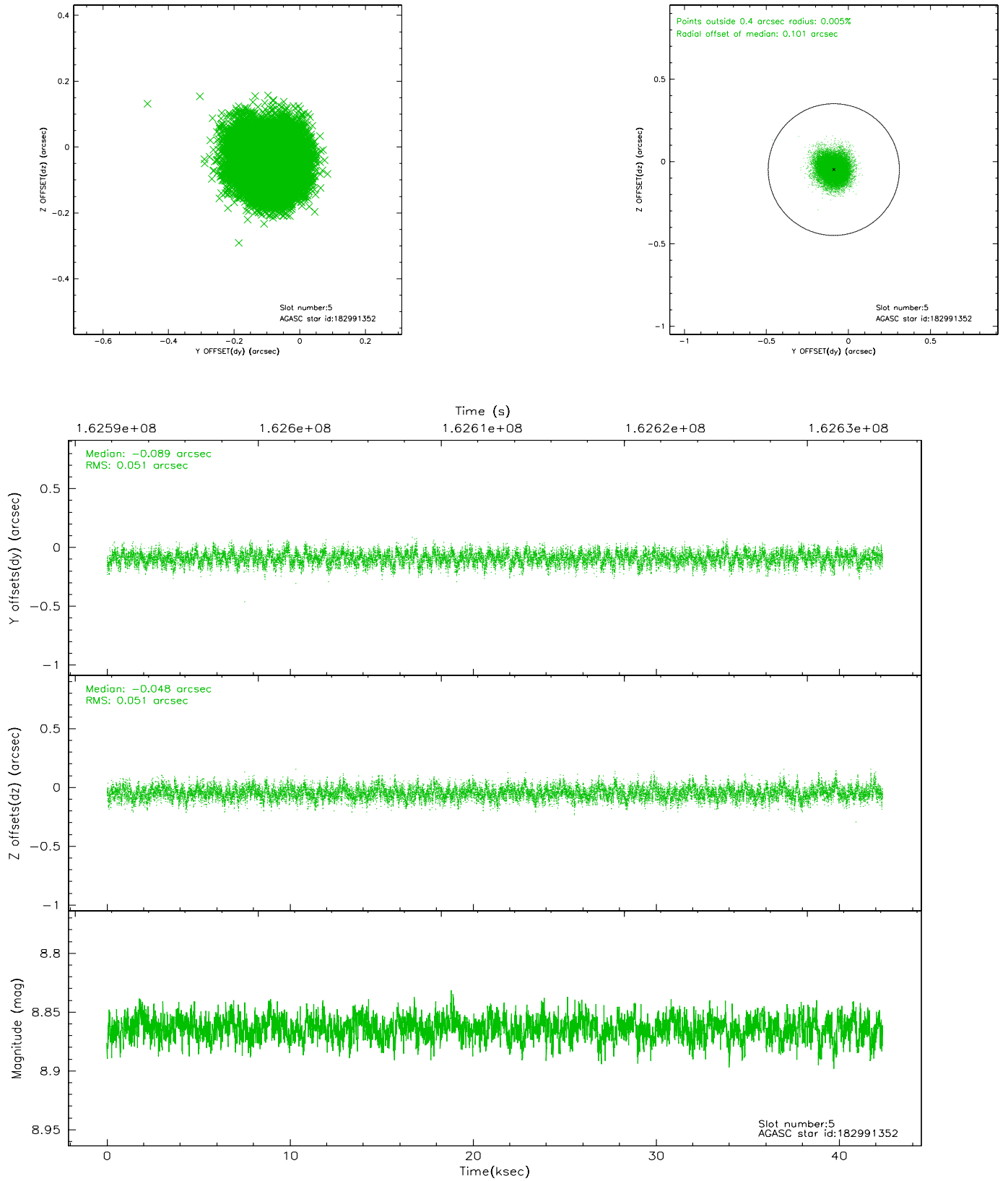
### 2.4.1 Slot 3



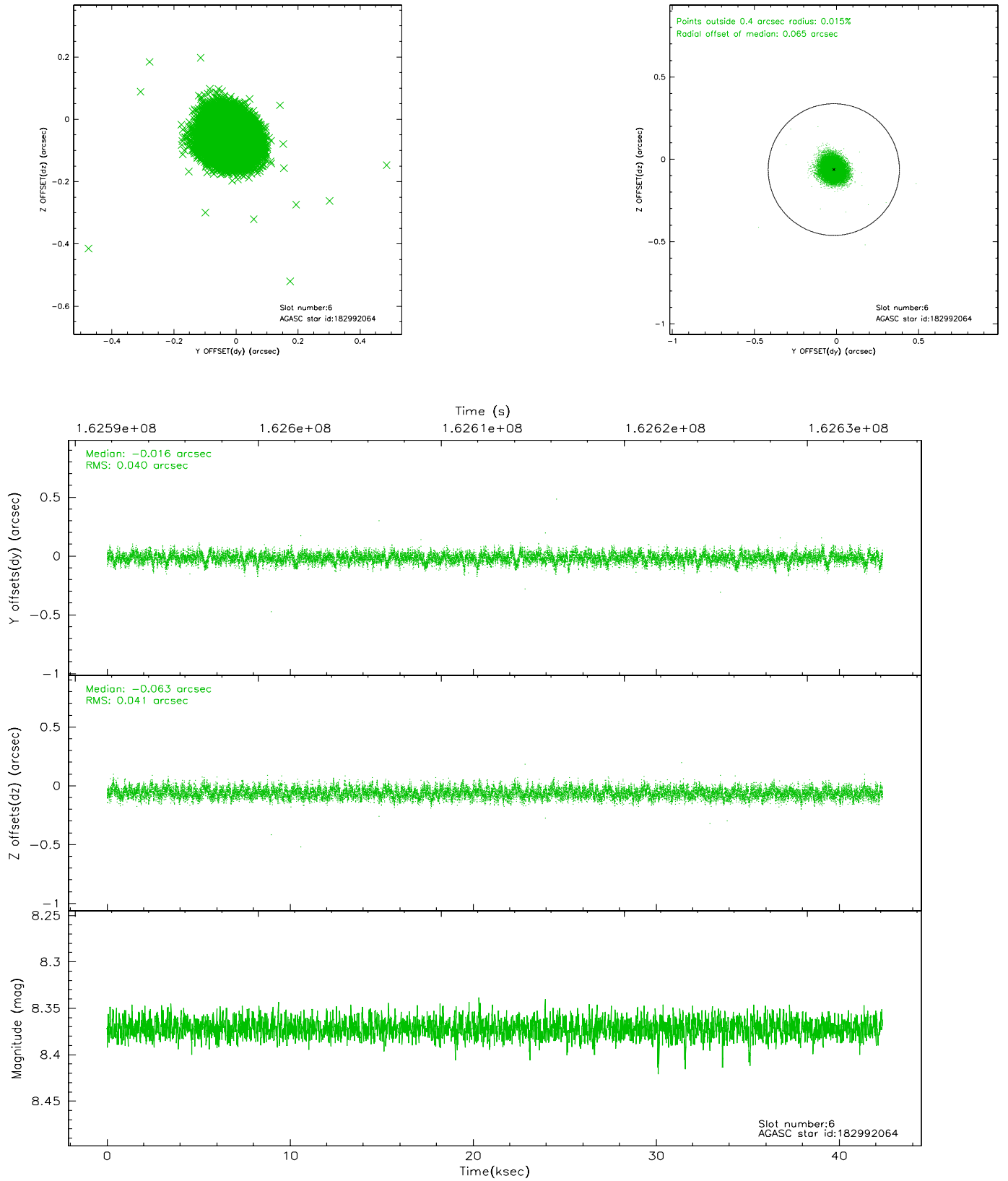
## 2.4.2 Slot 4



### 2.4.3 Slot 5

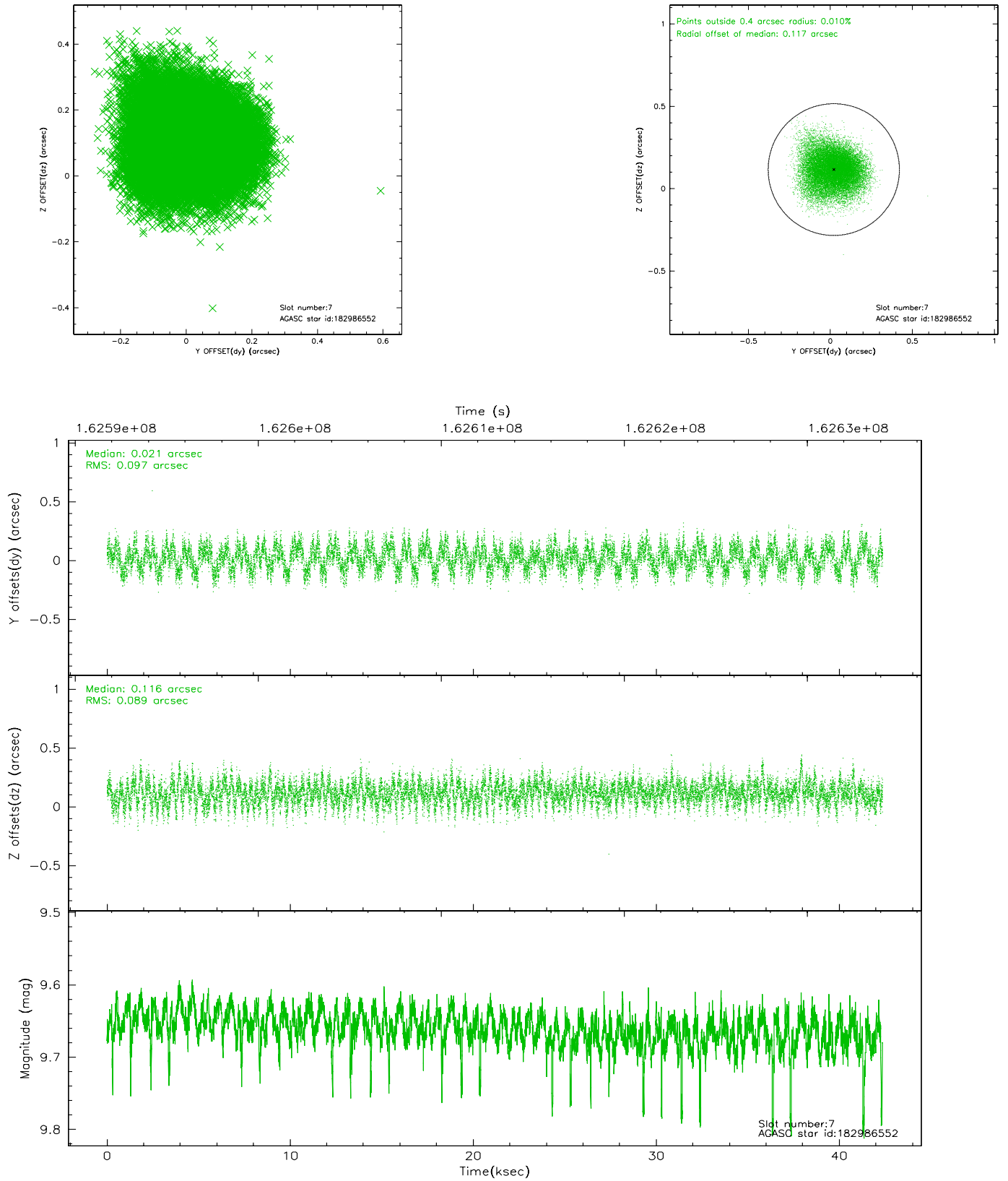


## 2.4.4 Slot 6



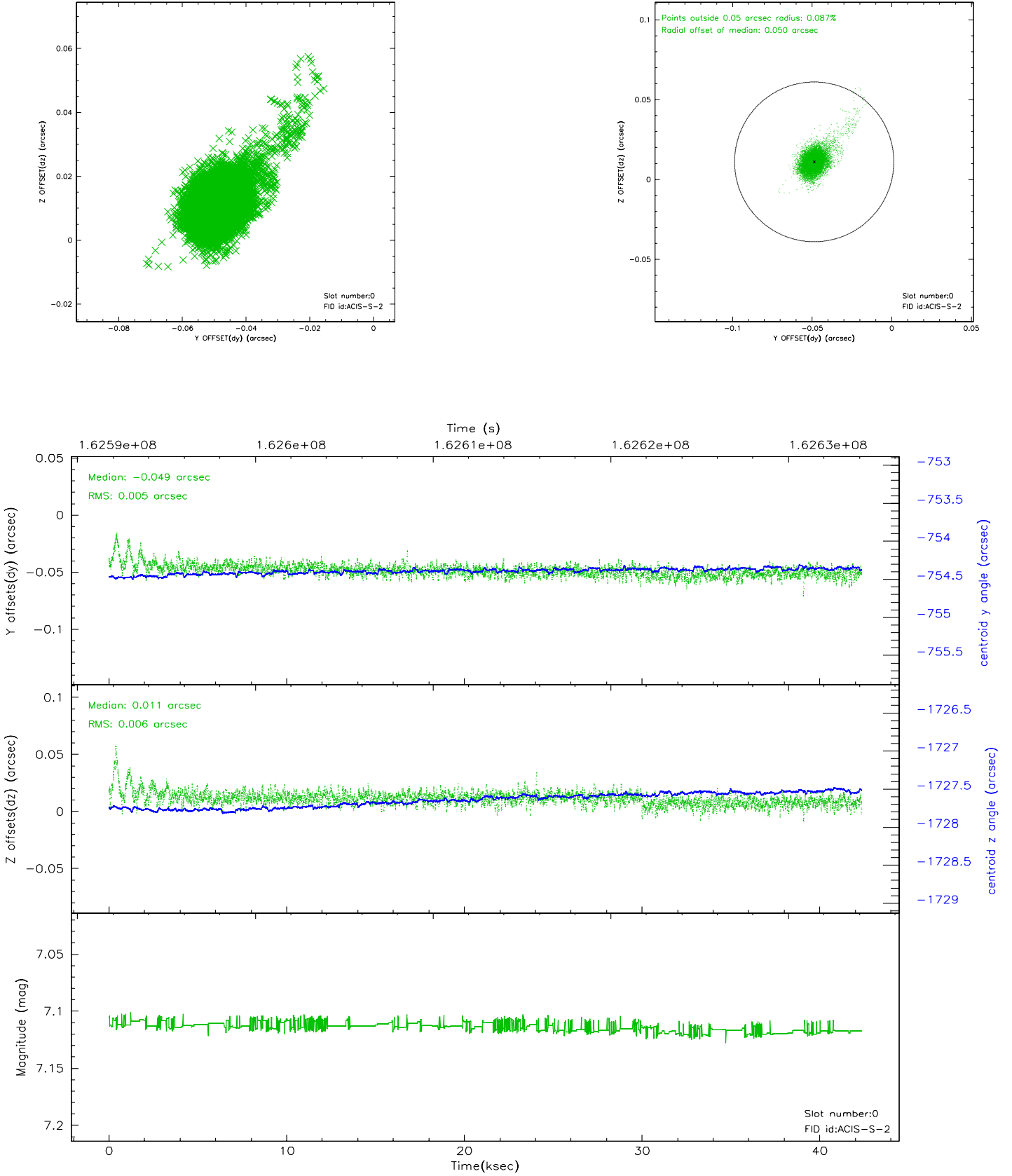


## 2.4.5 Slot 7

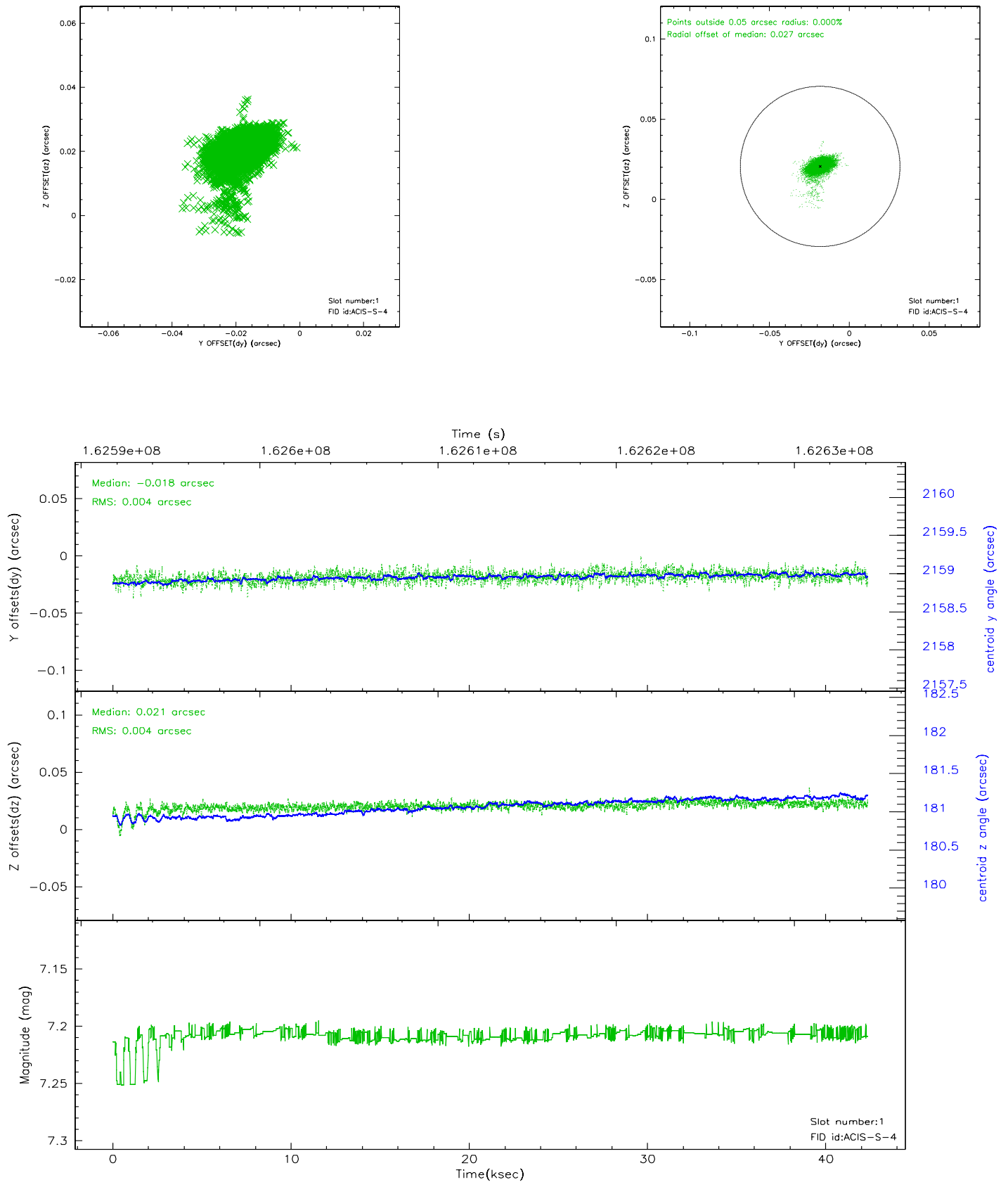


## 2.5 FID Slots

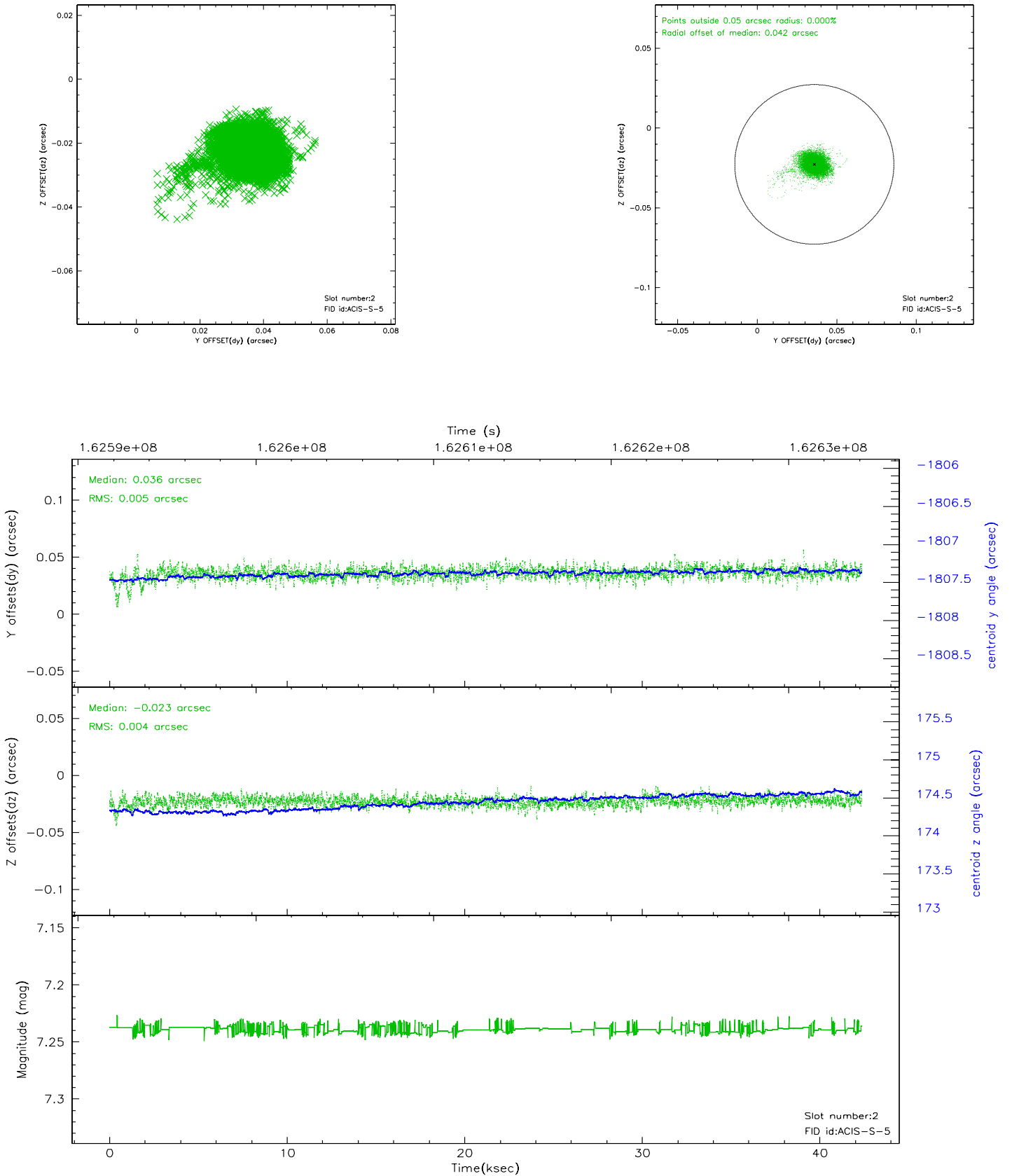
### 2.5.1 Slot 0



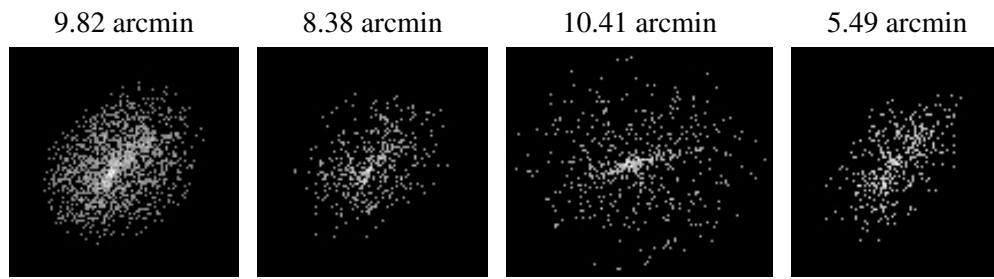
## 2.5.2 Slot 1



### 2.5.3 Slot 2



### 3 Point Sources



# A Summary

## A.1 Status

V&V Scientist	Joy Nichols
V&V Date (YYYY-MM-DD)	2006.08.21
V&V Edition	1
V&V Disposition and Status	OK
V&V Charge Time	41.276

## A.2 Comments

An image of Jupiter was inadvertently superposed on the bias map for chip 7.

The region of that bias map containing the anomalous values due to the image of Jupiter was replaced with scaled values from another bias map for this chip taken near in time. The replacement values came from the bias

map for chip 7 of obsid 3848. The FITS header of the bias file for this

observation details the exact pixels replaced.