

V&V Reference Report

L2 ASCDS Version : 7.6.10

Observation 3388 - L2 Version 001
Chandra X-Ray Center

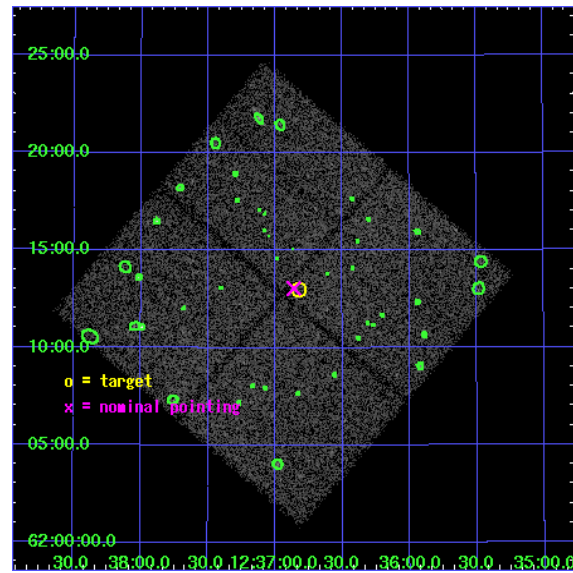
L2 Processing Date : Jan 12 2007

Contents

1	Front	2
2	OBI	3
2.1	OBI	3
2.1.1	Images	3
2.1.2	Bias	3
2.1.3	Parameters	4
2.1.4	Events	4
2.2	Compared Parameters	5
2.3	Aspect	6
2.4	Star Slots	9
2.4.1	Slot 3	9
2.4.2	Slot 4	10
2.4.3	Slot 5	11
2.4.4	Slot 6	12
2.4.5	Slot 7	13
2.5	FID Slots	14
2.5.1	Slot 0	14
2.5.2	Slot 1	15
2.5.3	Slot 2	16
3	Point Sources	17
A	Summary	18
A.1	Status	18
A.2	Comments	18

1 Front

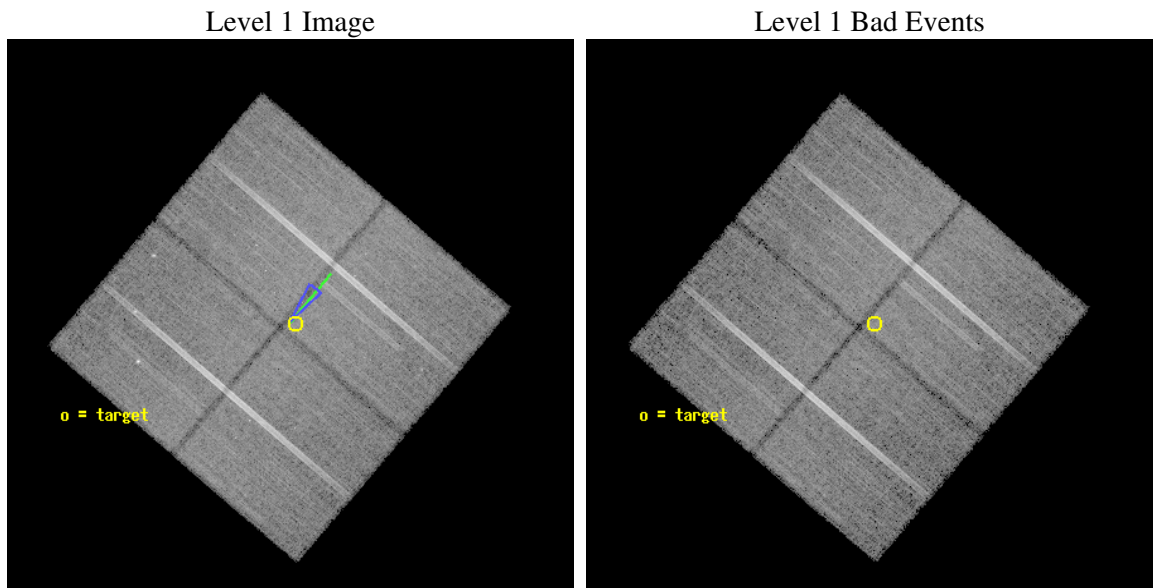
seq_num	900132
obs_id	3388
title	THE CHANDRA SURVEY OF THE HUBBLE DEEP FIELD NORTH AREA: A PUBLIC RESOURCE FOR THE PRESENT AND FUTURE OF X-RAY ASTRONOMY
observer	Prof. William Brandt
object	HDF-N
dtcycle	0
cycle	P
ra_targ	189.205833
dec_targ	62.216111
ra_nom	189.21545914387
dec_nom	62.217523641515
roll_nom	40.523175024491
revision	2
ontime	50216.77702266
livetime	49560.657861805
ontime0	50210.495082274
ontime1	50210.49507226
ontime2	50219.917952999
ontime3	50216.77702266
l2events	79199



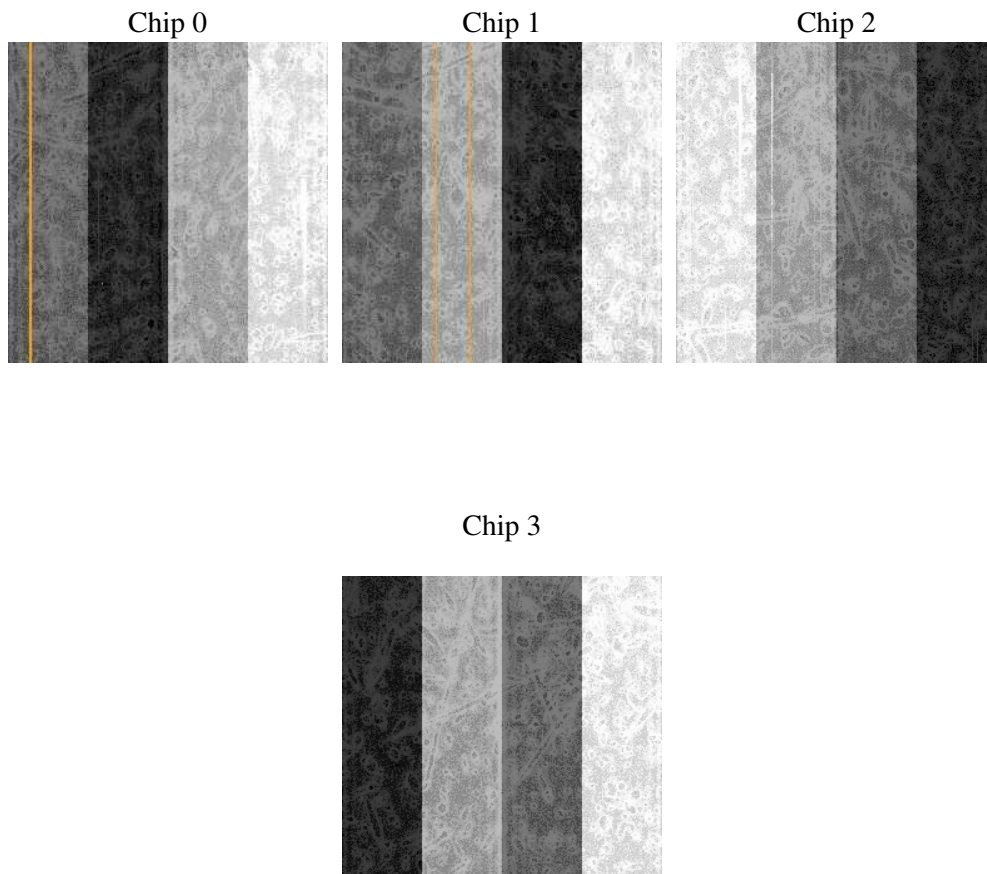
2 OBI

2.1 OBI

2.1.1 Images



2.1.2 Bias



2.1.3 Parameters

obi_num	0
ascdsver	7.6.10
caldbver	3.3.0
date	2007-01-12T08:44:50
revision	2

sched_exp_time	50000.000000
ontime	50216.77702266
ontime0	50210.495082274
ontime1	50210.49507226
ontime2	50219.917952999
ontime3	50216.77702266
l1events	1004528

2.1.4 Events

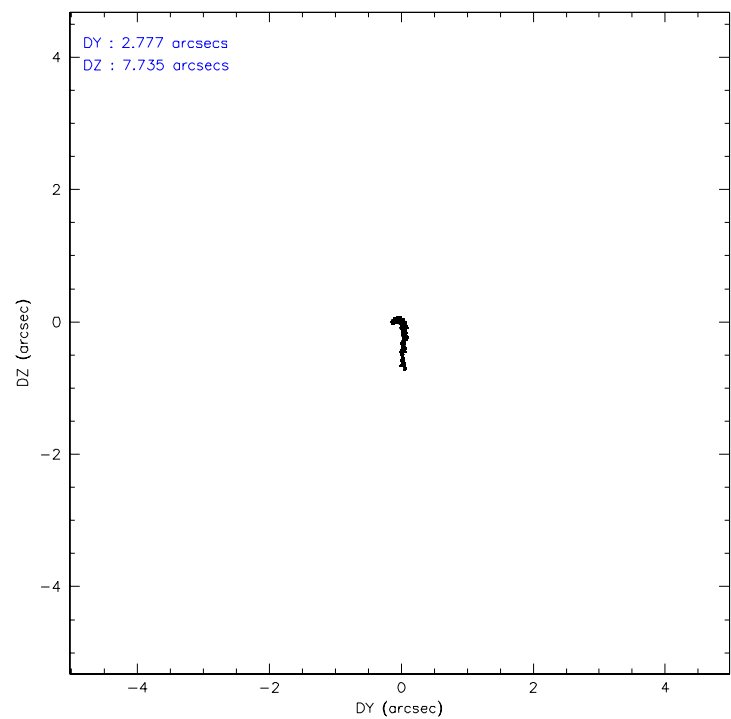
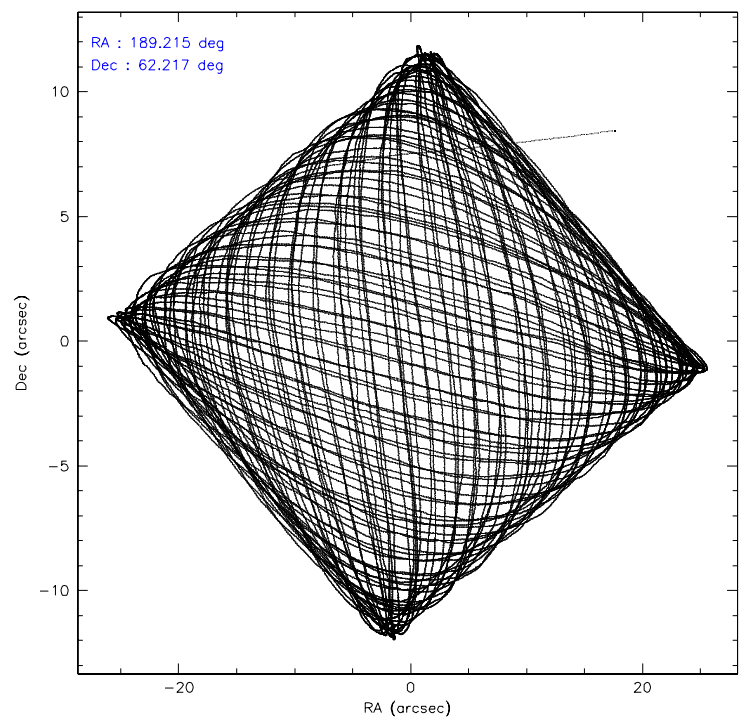
	ccd 0	ccd 1	ccd 2	ccd 3
level 1 events	238529	236762	268795	260442
rejected events	213102	211501	244451	237469
rejected %	89%	89%	90%	91%

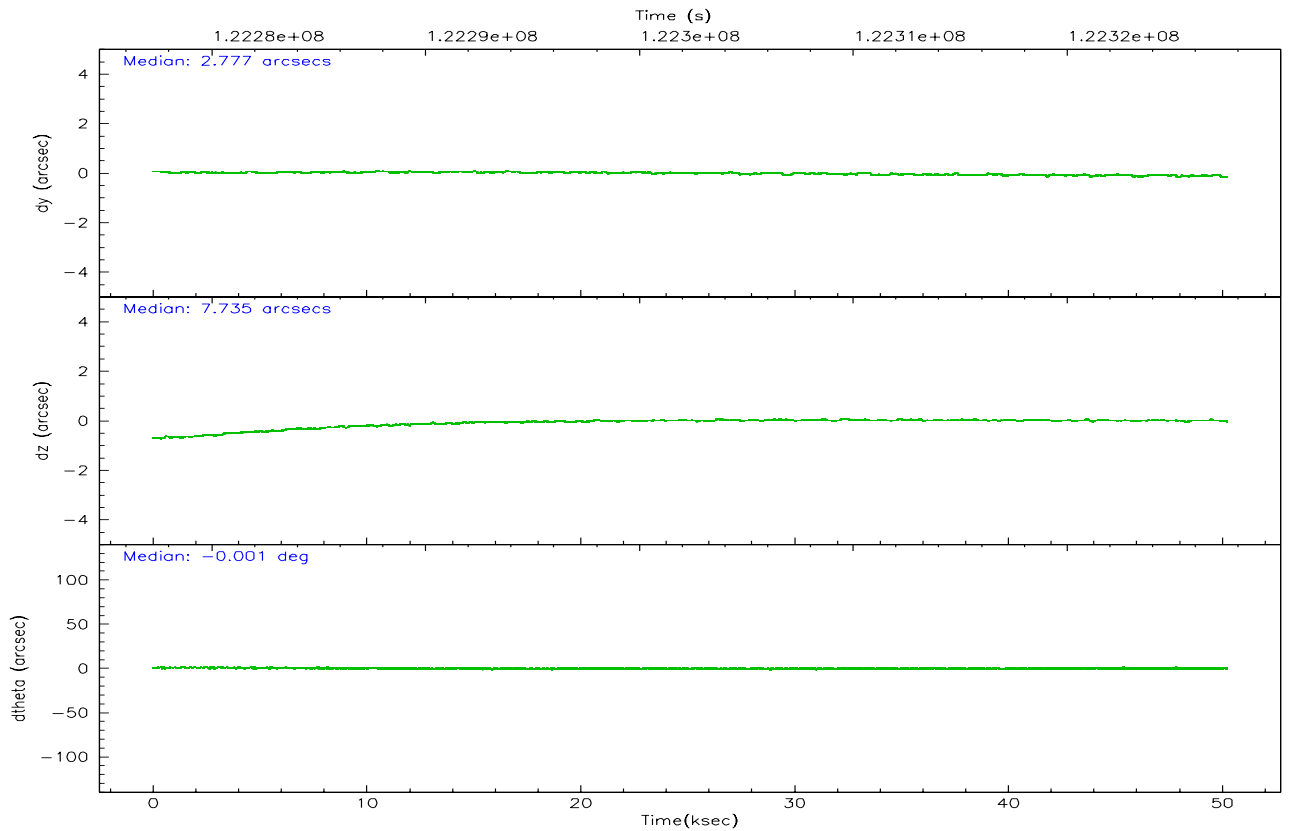
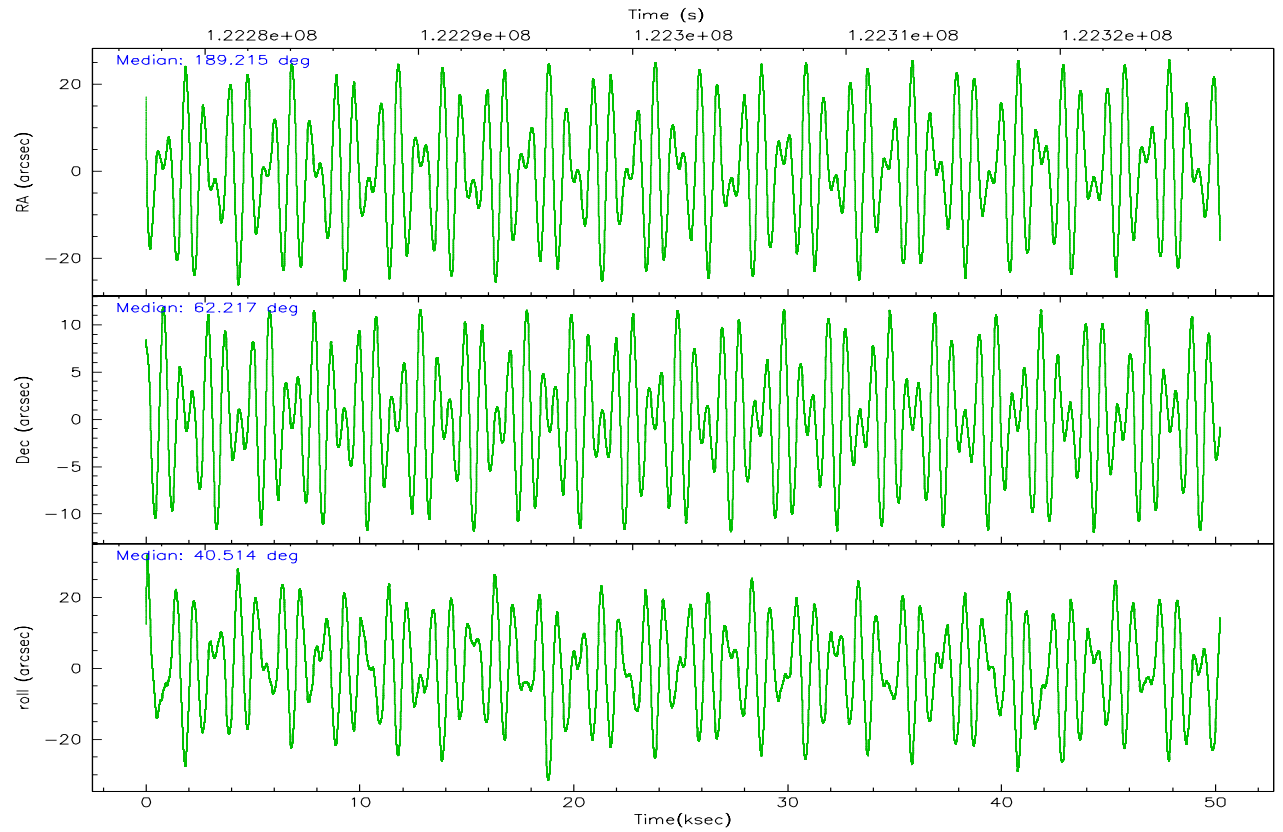
	ccd 0	ccd 1	ccd 2	ccd 3
grade 0 events	9601	8483	9060	8447
	4%	3%	3%	3%
grade 1 events	103	110	87	121
	0%	0%	0%	0%
grade 2 events	5622	5463	5703	4828
	2%	2%	2%	1%
grade 3 events	3018	3136	2707	2713
	1%	1%	1%	1%
grade 4 events	2779	3197	2675	2665
	1%	1%	0%	1%
grade 5 events	6971	7652	6516	7752
	2%	3%	2%	2%
grade 6 events	4411	4985	4200	4327
	1%	2%	1%	1%
grade 7 events	206024	203736	237847	229589
	86%	86%	88%	88%

2.2 Compared Parameters

Parameter	Planned	Actual	Parameter	Planned	Actual
Instrument	ACIS	ACIS	Obspar format version number	6	6
Detector	ACIS-0123	ACIS-0123	Obspar file type	PREDICTED	ACTUAL
Grating	NONE	NONE	Obspar update status	NONE	UPDATED
Data mode	VFAINT	VFAINT	Number of optional ACIS chips dropped	0	0
Observation mode	POINTING	POINTING	On-chip summing requested	N	N
Pointing RA	189.195967	189.2154591438668	Subarray requested	NONE	NONE
Pointing Dec	62.191647	62.21752364151451	Alternating exposures requested	N	N
Pointing Roll	40.331722	40.52317502449086	Primary exposure time	0.000000	3.1
Roll angle	38.000000	38.000000			
Roll tolerance	10.000000	10.000000			
Roll constraint allows 180D rotation	N	N			
SIM focus pos (mm)	-0.782348	-0.7809083437167272			
SIM defocus (mm)	0	0.001439871863259334			
SIM translation stage pos (mm)	-233.592463	-233.5874344608287			
SIM translation stage offset (mm)	0	-0.005018542100998502			
Observation start time	122277486.184000	122276476.32852			
Observation start date	2001-11-16T05:57:02	2001-11-16T05:41:16			
Observation end time	122327486.184000	122328693.4181			
Observation end date	2001-11-16T19:50:22	2001-11-16T20:11:33			
Read mode	TIMED	TIMED			

2.3 Aspect



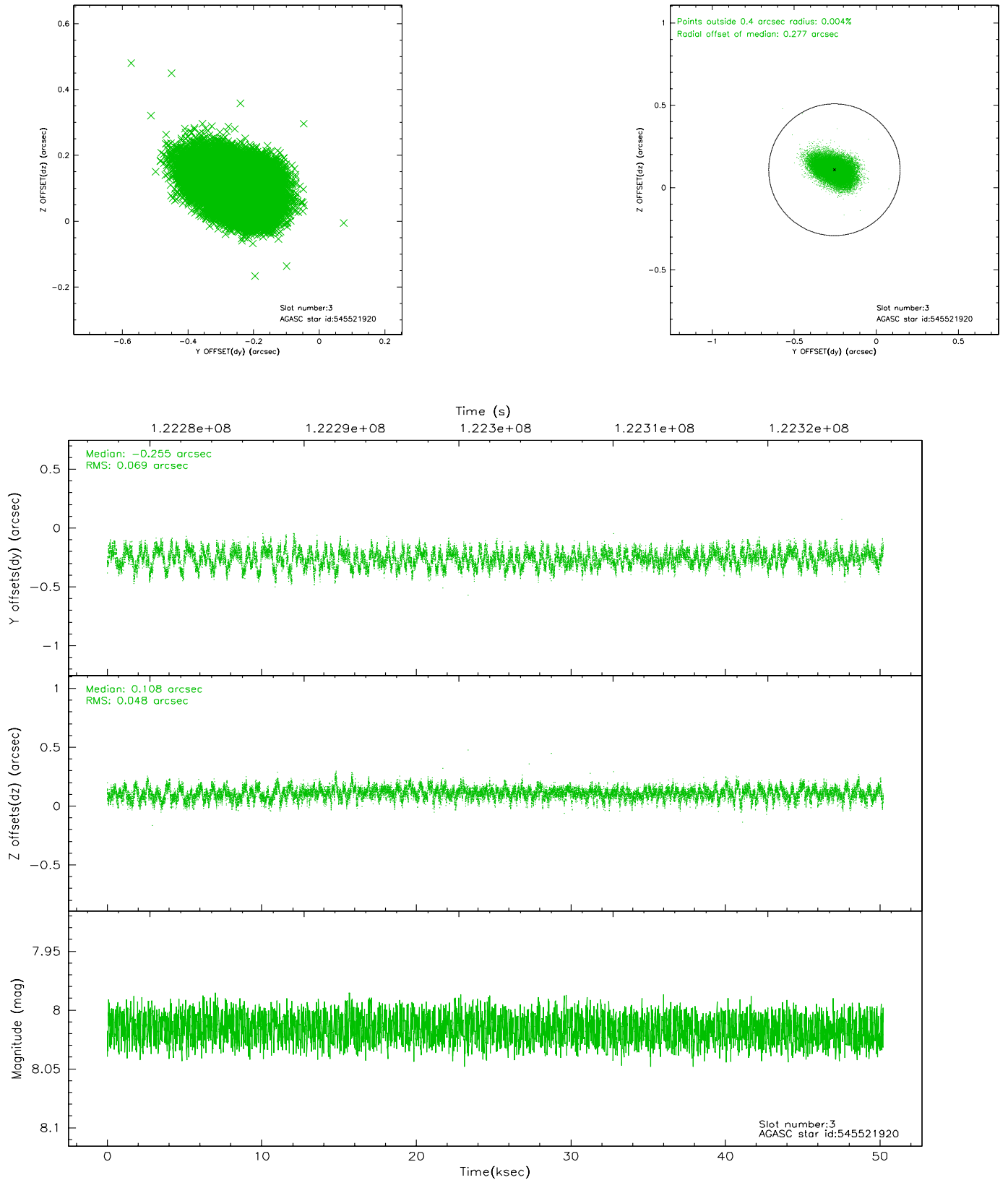


Slot Statistics

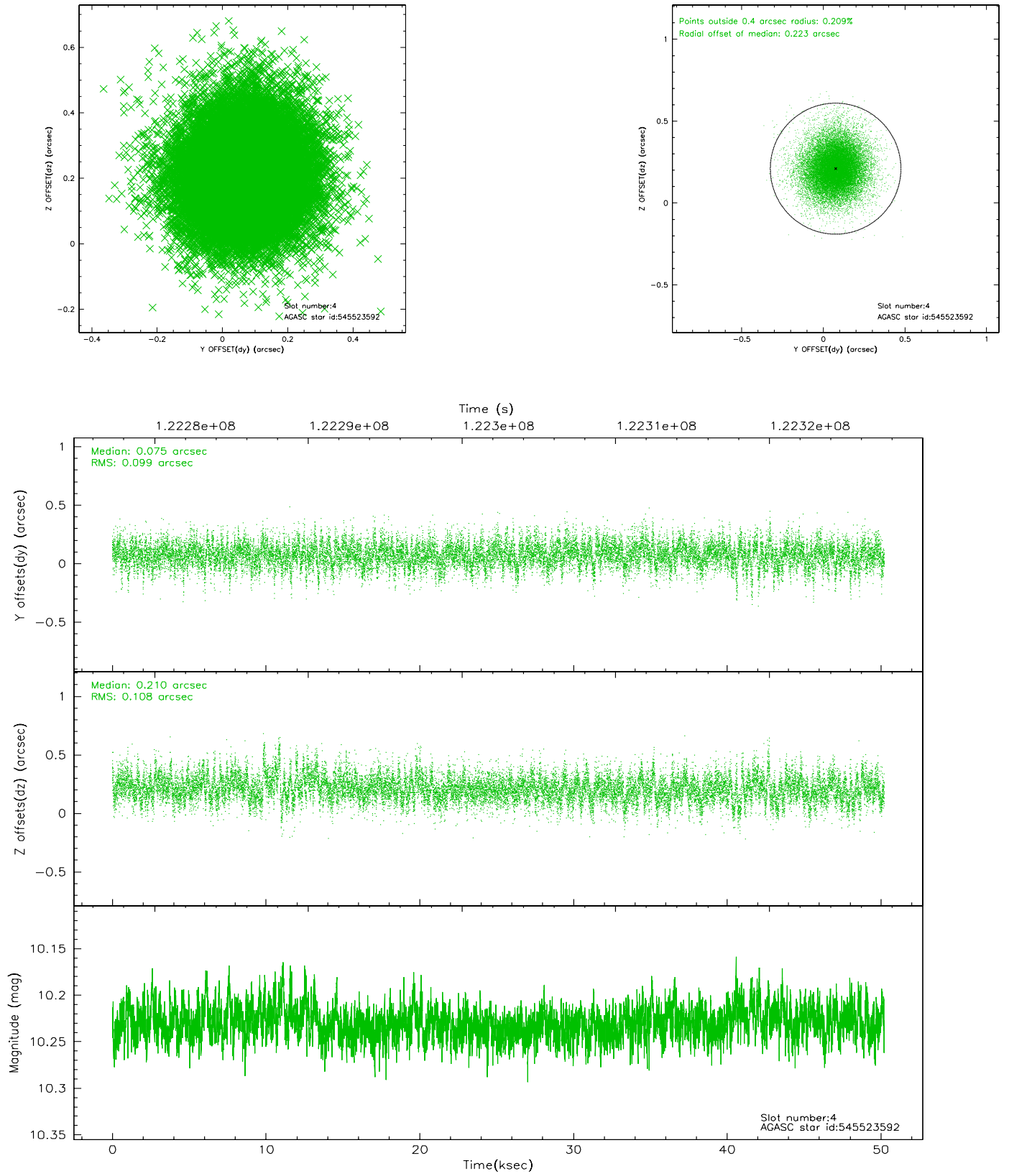
slot	status	id	mag	n_pts	med_dy	med_dz	dr1	dr2	ra	dec	mean_y	mean_z
0	FID	ACIS-I-1	7.24	12251	-0.033	0.074	0.011	0.024	0.000000	0.000000	936.99	-830.99
1	FID	ACIS-I-5	7.24	12249	-0.010	0.040	0.008	0.013	0.000000	0.000000	-1811.08	1066.52
2	FID	ACIS-I-6	7.26	12249	-0.049	-0.043	0.008	0.018	0.000000	0.000000	402.58	1710.88
3	GUIDE	545521920	8.02	24493	-0.255	0.108	0.090	0.146	190.203465	62.042567	958.62	-1499.46
4	GUIDE	545523592	10.23	24415	0.075	0.210	0.153	0.258	188.664324	61.541019	-2207.27	-1192.84
5	GUIDE	545523632	10.04	24480	0.196	0.097	0.146	0.250	188.952319	61.550910	-1809.43	-1487.75
6	GUIDE	544605560	10.25	24465	0.172	-0.329	0.213	0.374	187.386670	62.313812	-1993.85	2325.07
7	GUIDE	545916224	9.59	24486	-0.180	-0.078	0.129	0.208	188.817359	62.651242	595.40	1667.87

2.4 Star Slots

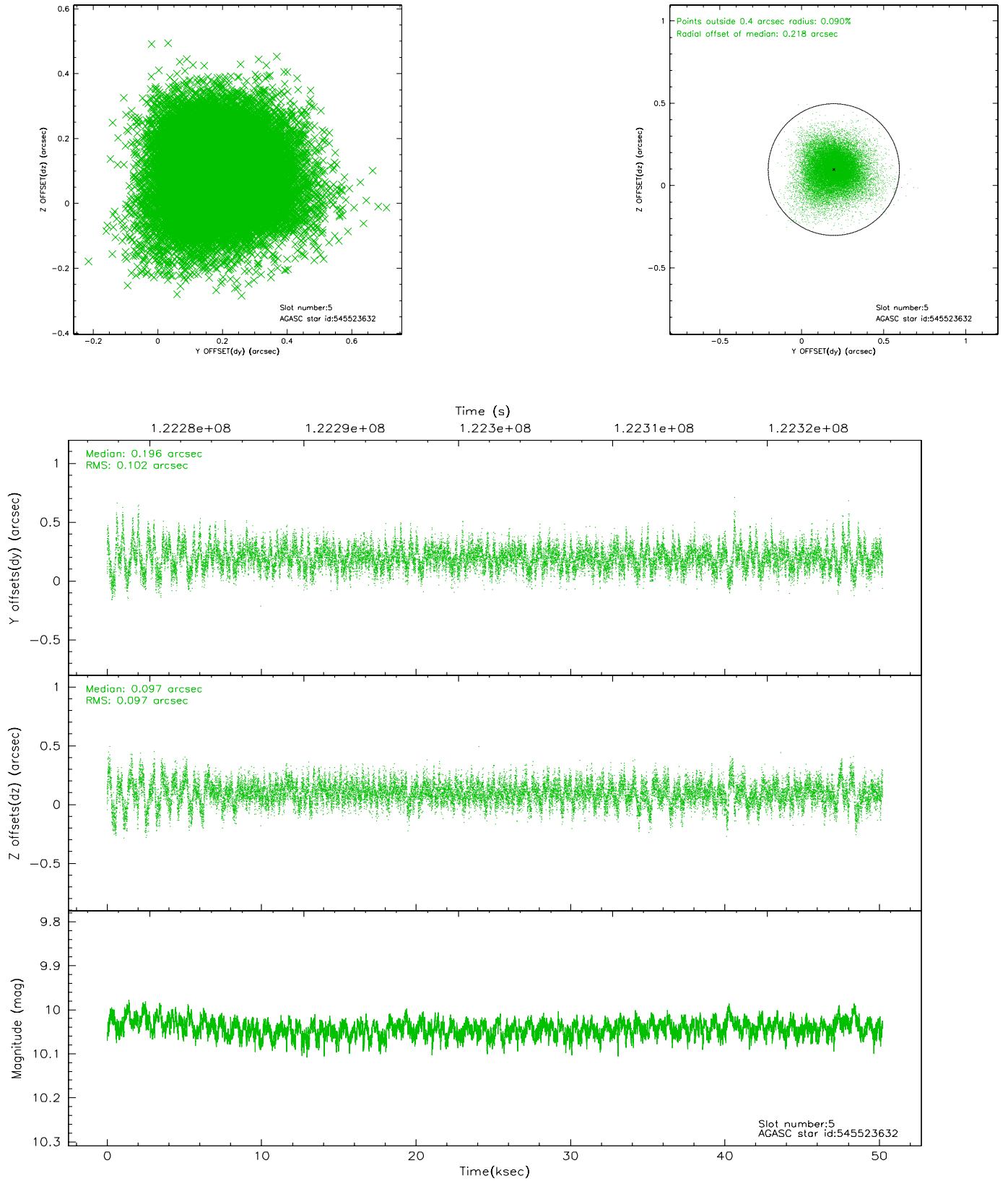
2.4.1 Slot 3



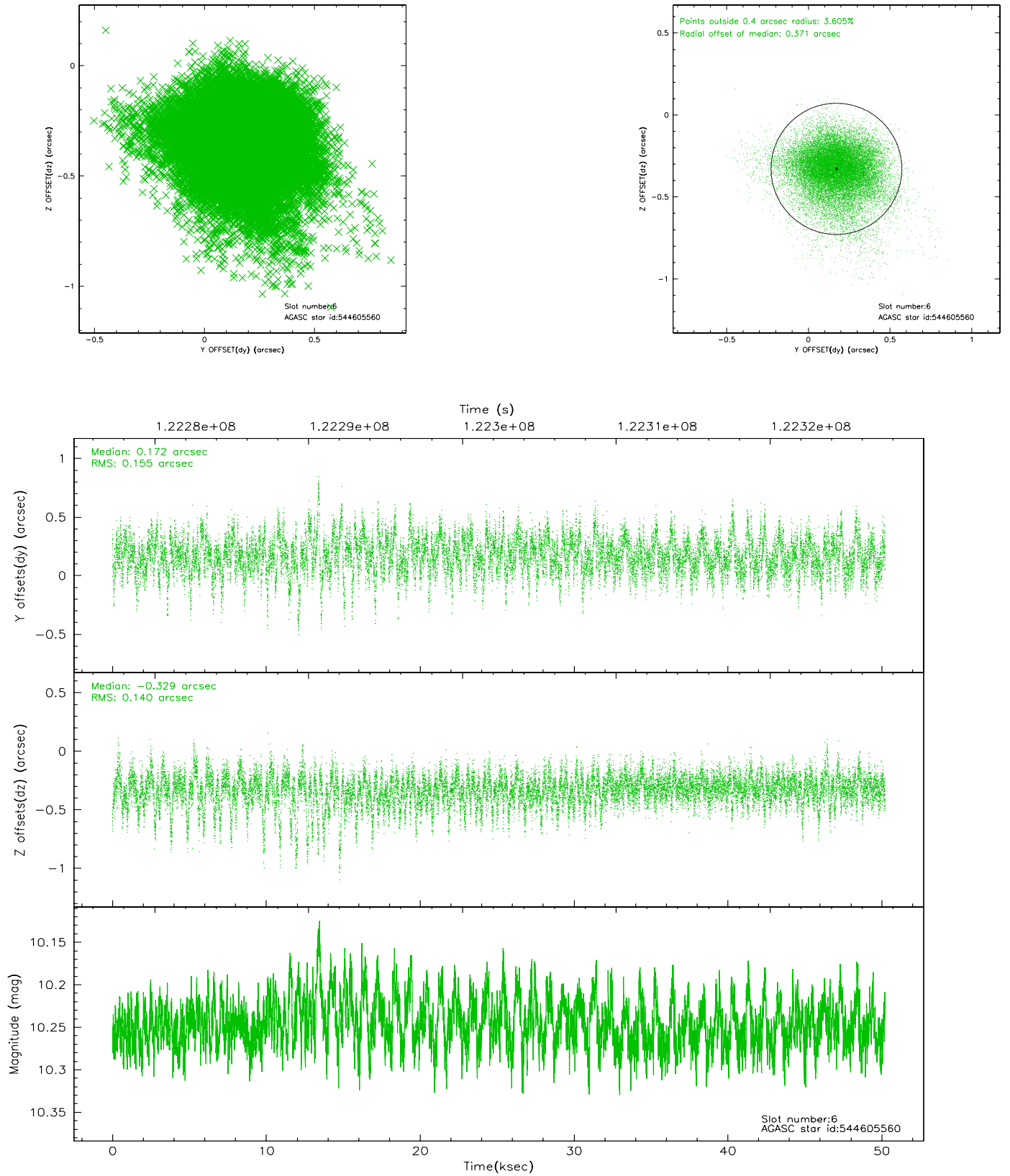
2.4.2 Slot 4



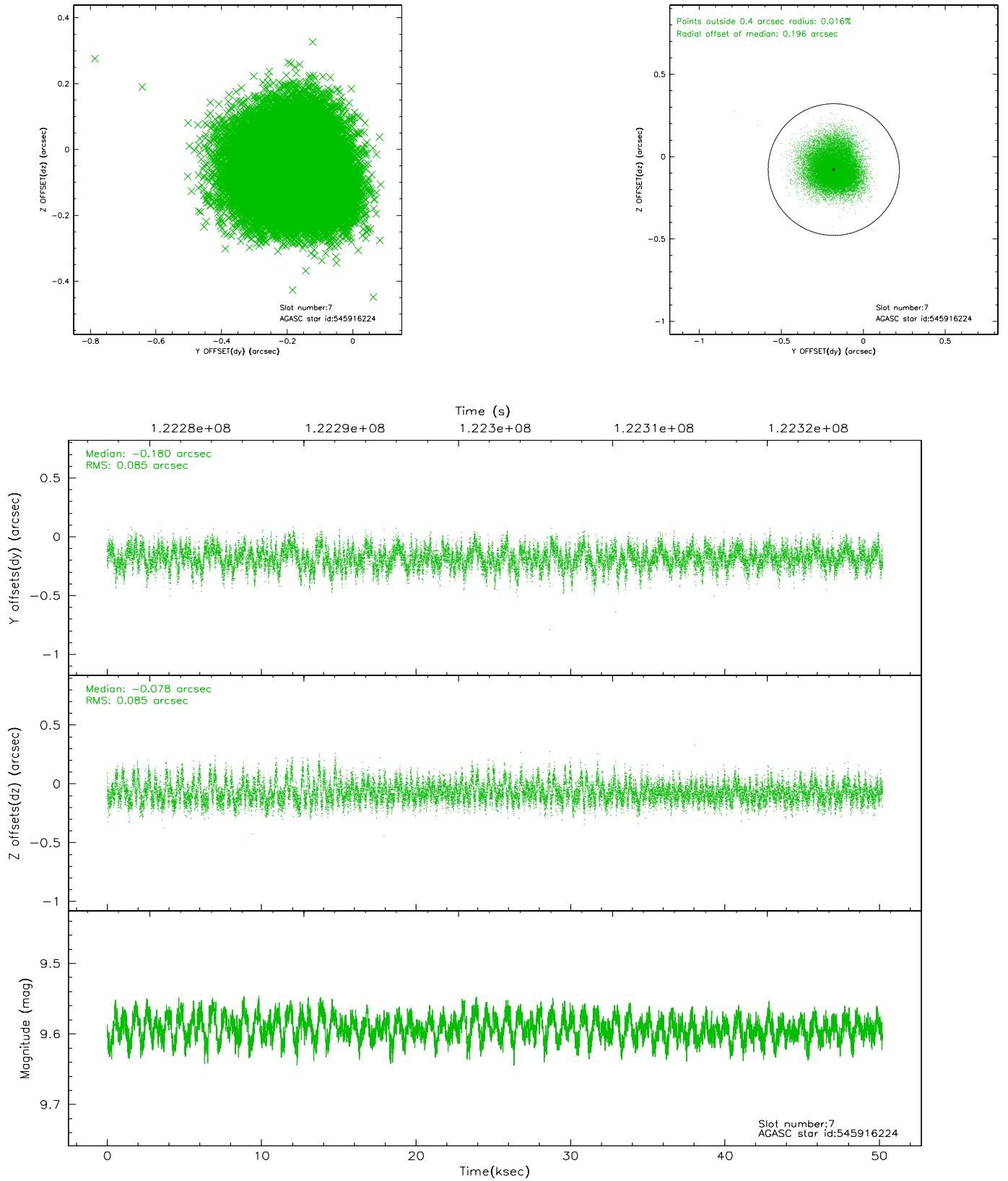
2.4.3 Slot 5



2.4.4 Slot 6

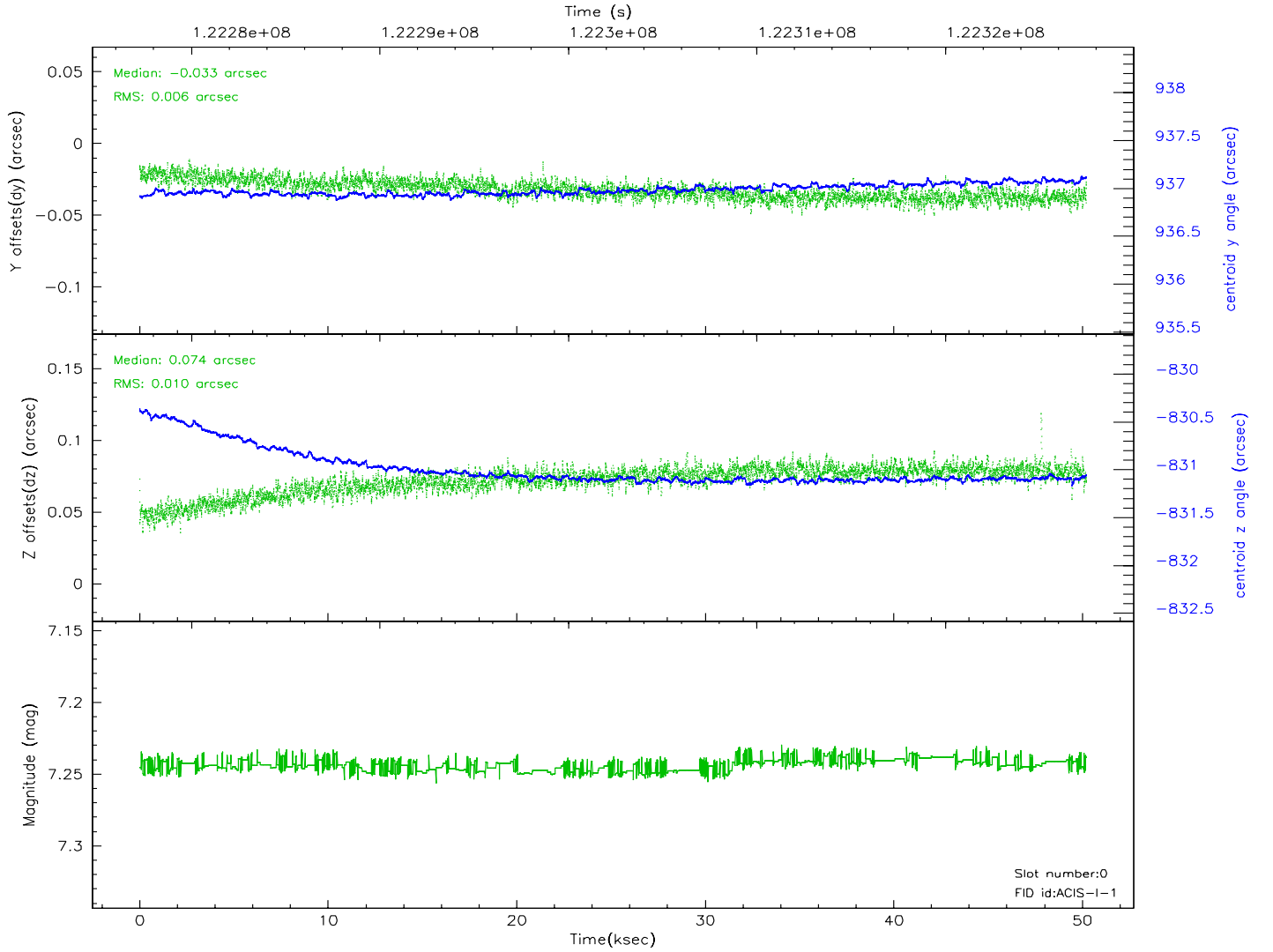
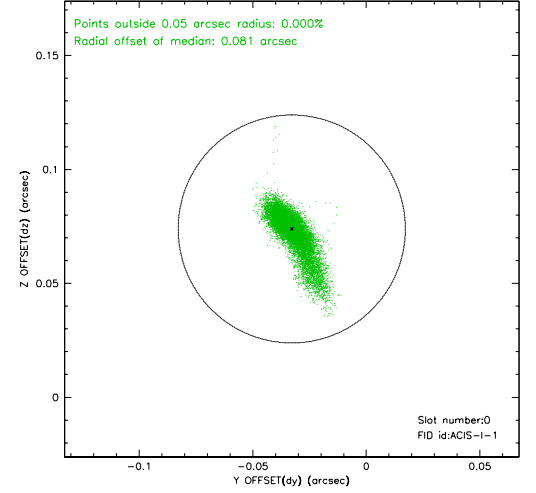
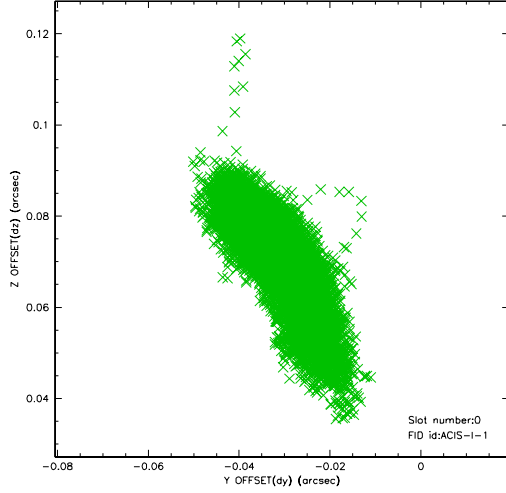


2.4.5 Slot 7

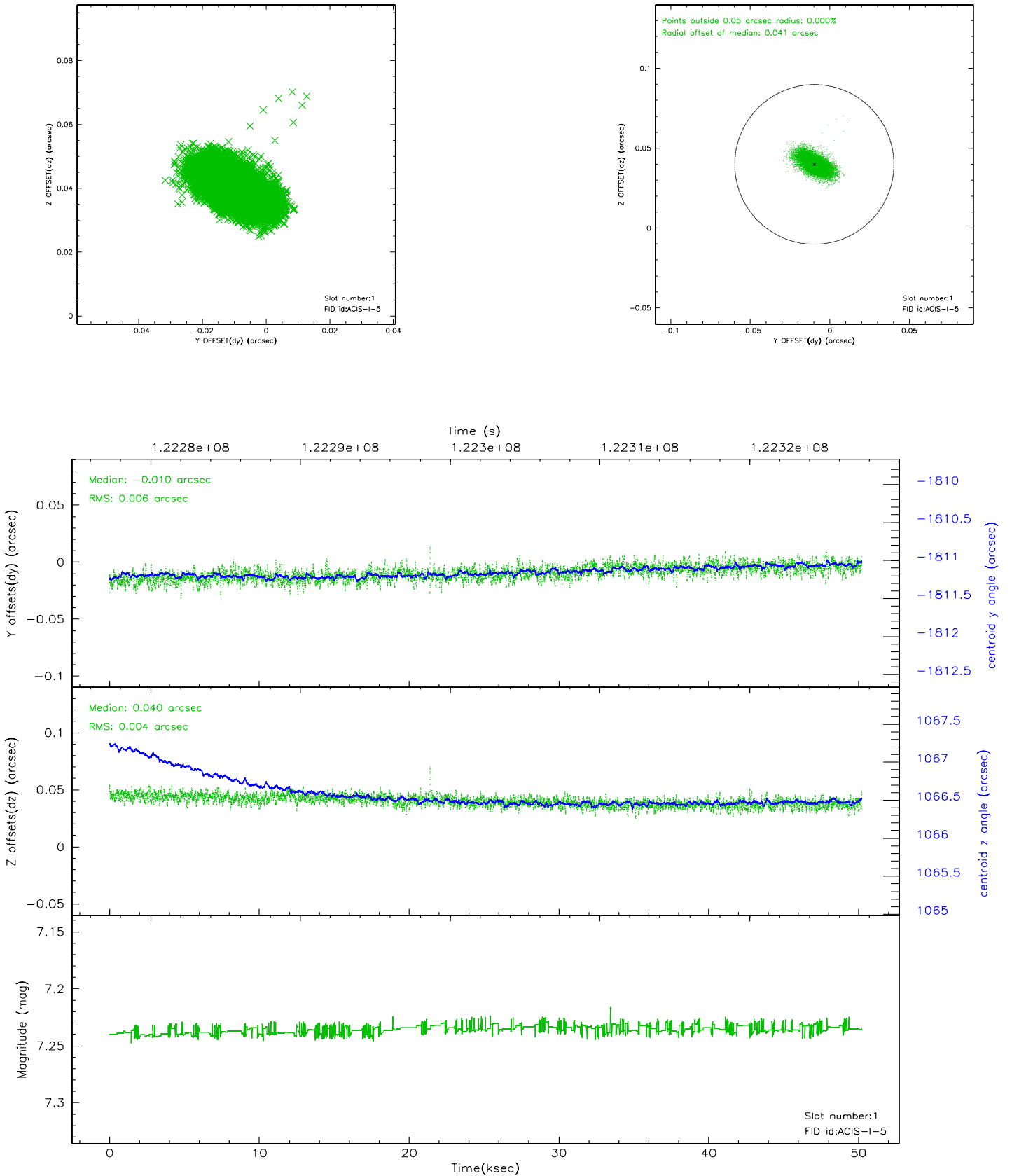


2.5 FID Slots

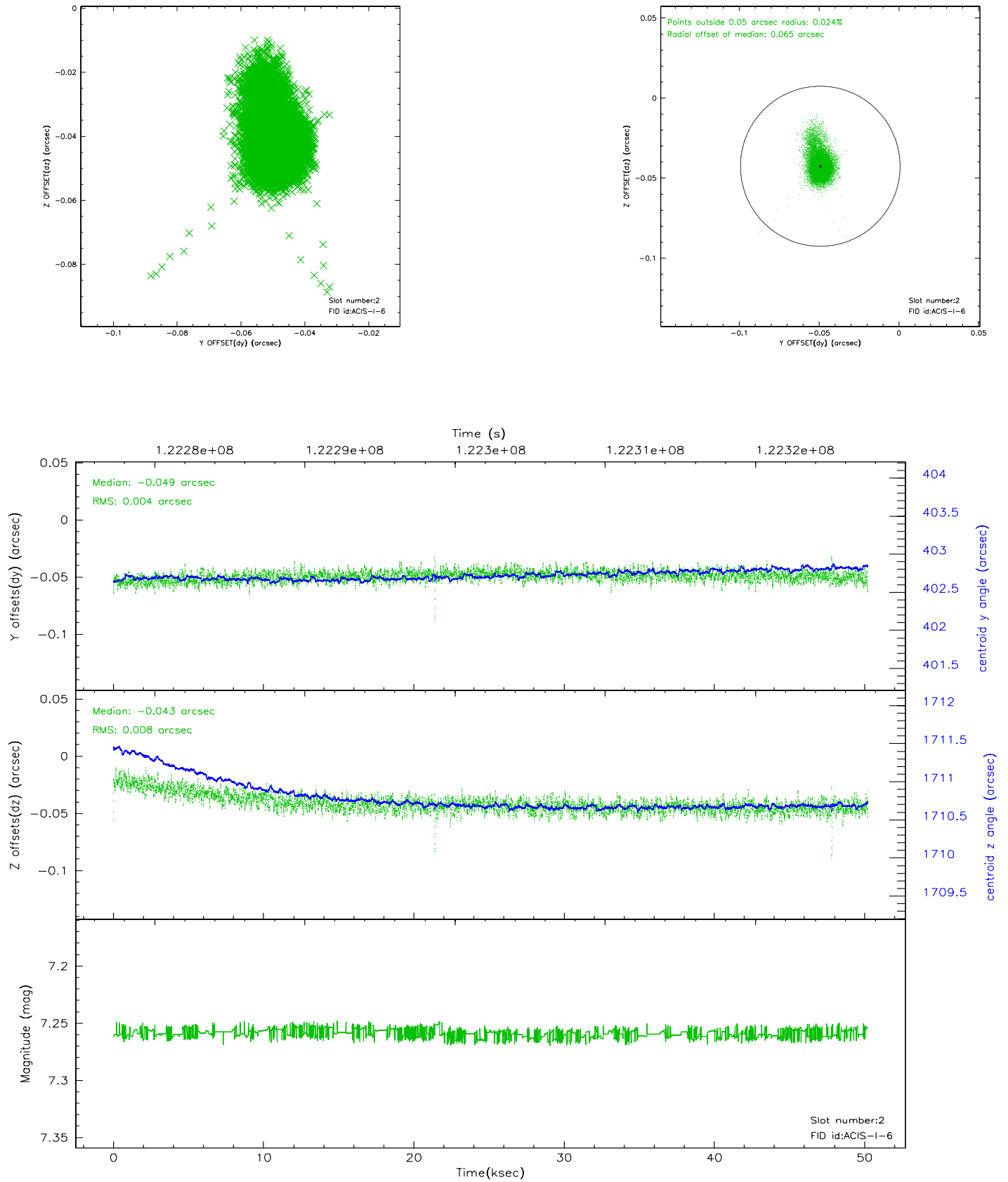
2.5.1 Slot 0



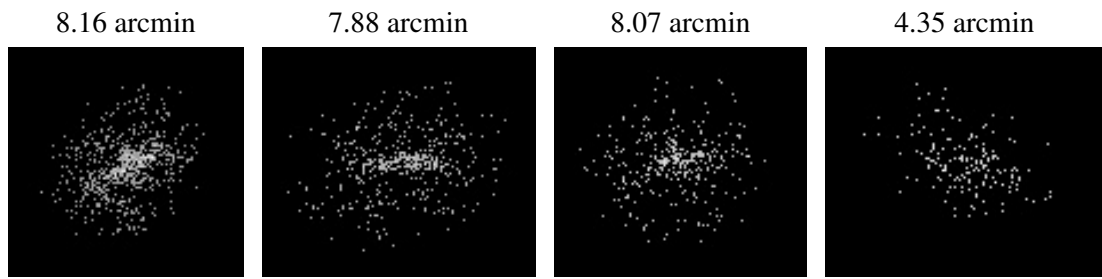
2.5.2 Slot 1



2.5.3 Slot 2



3 Point Sources



A Summary

A.1 Status

V&V Scientist	Beth Sundheim
V&V Date (YYYY-MM-DD)	2007.01.12
V&V Edition	1
V&V Disposition and Status	OK
V&V Charge Time	50.216

A.2 Comments