

V&V Reference Report

L2 ASCDS Version : 8.4.5

Observation 3348 - L2 Version 3
Chandra X-Ray Center

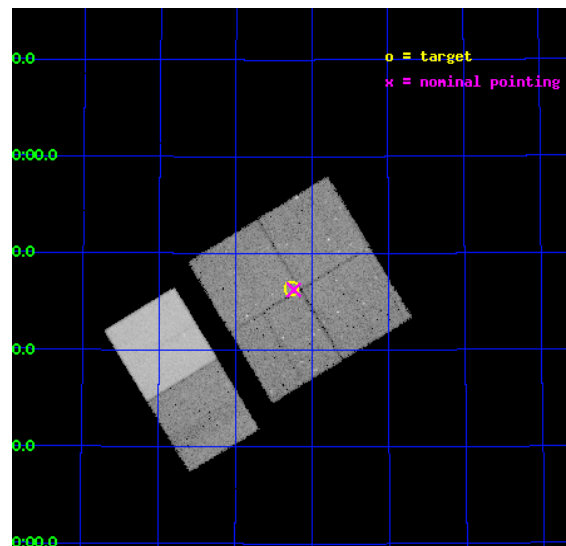
L2 Processing Date : Oct 7 2012

Contents

| | | |
|----------|-------------------------------|-----------|
| 1 | Front | 2 |
| 2 | OBI | 3 |
| 2.1 | OBI | 3 |
| 2.1.1 | Images | 3 |
| 2.1.2 | Bias | 3 |
| 2.1.3 | Parameters | 4 |
| 2.1.4 | Events | 4 |
| 2.2 | Compared Parameters | 5 |
| 2.3 | Aspect | 6 |
| 2.4 | Star Slots | 9 |
| 2.4.1 | Slot 3 | 9 |
| 2.4.2 | Slot 4 | 10 |
| 2.4.3 | Slot 5 | 11 |
| 2.4.4 | Slot 6 | 12 |
| 2.4.5 | Slot 7 | 13 |
| 2.5 | FID Slots | 14 |
| 2.5.1 | Slot 0 | 14 |
| 2.5.2 | Slot 1 | 15 |
| 2.5.3 | Slot 2 | 16 |
| A | Summary | 17 |
| A.1 | Status | 17 |
| A.2 | Comments | 17 |

1 Front

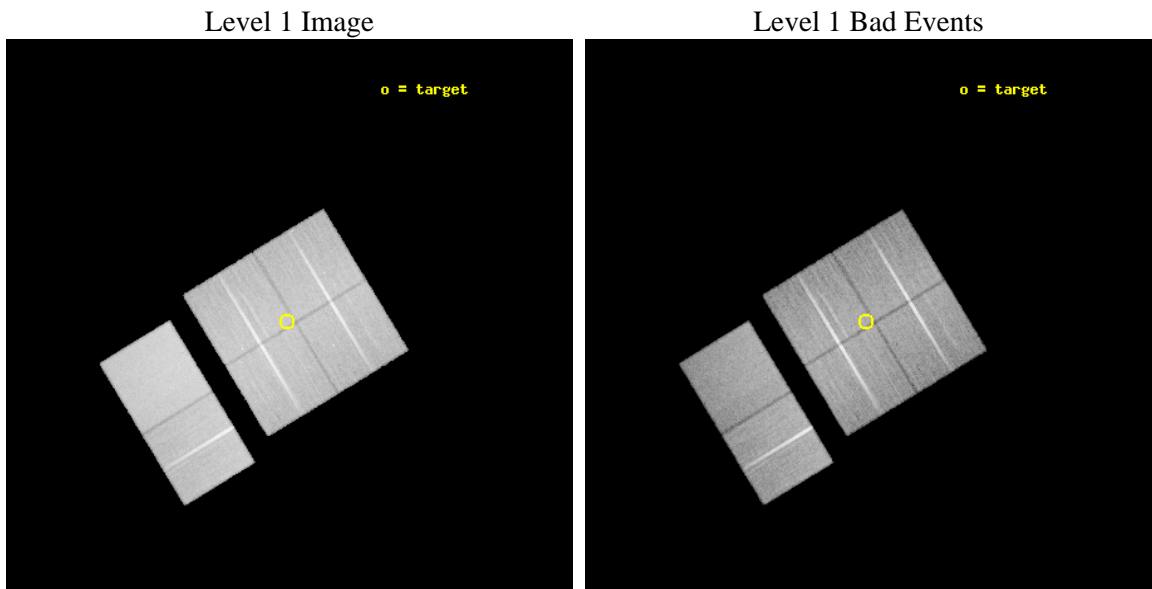
| | | |
|----------|---|---|
| seq_num | 900187 | Sequence number |
| obs_id | 3348 | Observation id |
| title | WIDE-FIELD CHANDRA SURVEY OF THE LOCKMAN HOLE-NORTHWEST | Proposal t |
| observer | Prof. Amy Barger | Principal investigator |
| object | LH-NW-9 | Source name |
| dtcycle | 0 | |
| cycle | P | events from which exps? Prim/Second/Both |
| ra_targ | 158.81665 | Observer's specified target RA [deg] |
| dec_targ | 57.773609 | Observer's specified target Dec [deg] |
| ra_nom | 158.80955001198 | Nominal RA [deg] |
| dec_nom | 57.770875622412 | Nominal Dec [deg] |
| roll_nom | 238.73278074345 | Nominal Roll [deg] |
| revision | 3 | Processing version of data |
| ontime | 40027.764520645 | Sum of GTIs [s] |
| livetime | 39520.908864459 | Livetime [s] |
| ontime0 | 40030.88240087 | Sum of GTIs [s] |
| ontime1 | 40024.441410661 | Sum of GTIs [s] |
| ontime2 | 40024.482510328 | Sum of GTIs [s] |
| ontime3 | 40027.764520645 | Sum of GTIs [s] |
| ontime6 | 40014.882799506 | Sum of GTIs [s] |
| ontime7 | 40018.082699805 | Sum of GTIs [s] |
| l2events | 272010 | Number of level 2 events |



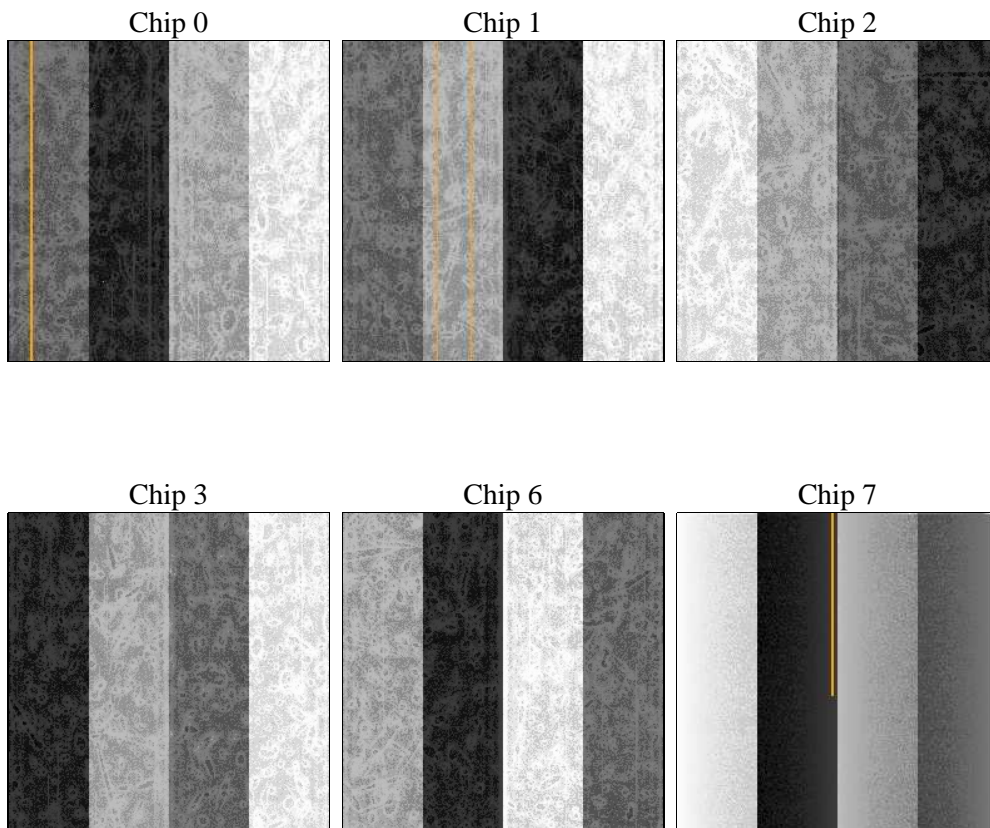
2 OBI

2.1 OBI

2.1.1 Images



2.1.2 Bias



2.1.3 Parameters

| | | | | | |
|----------|---------------------|--------------------------------|----------------|-----------------|---|
| obi_num | 0 | Obi number | sched_exp_time | 40000.000000 | [s] Scheduled observation exposure time |
| ascdsver | 8.4.5 | Processing system revision | ontime | 40027.764520645 | Sum of GTIs [s] |
| caldsver | 4.5.2 | | ontime0 | 40030.88240087 | Sum of GTIs [s] |
| date | 2012-10-07T09:46:08 | Date and time of file creation | ontime1 | 40024.441410661 | Sum of GTIs [s] |
| revision | 3 | Processing version of data | ontime2 | 40024.482510328 | Sum of GTIs [s] |
| | | | ontime3 | 40027.764520645 | Sum of GTIs [s] |
| | | | ontime6 | 40014.882799506 | Sum of GTIs [s] |
| | | | ontime7 | 40018.082699805 | Sum of GTIs [s] |
| | | | l1events | 1628308 | Number of level 1 events |

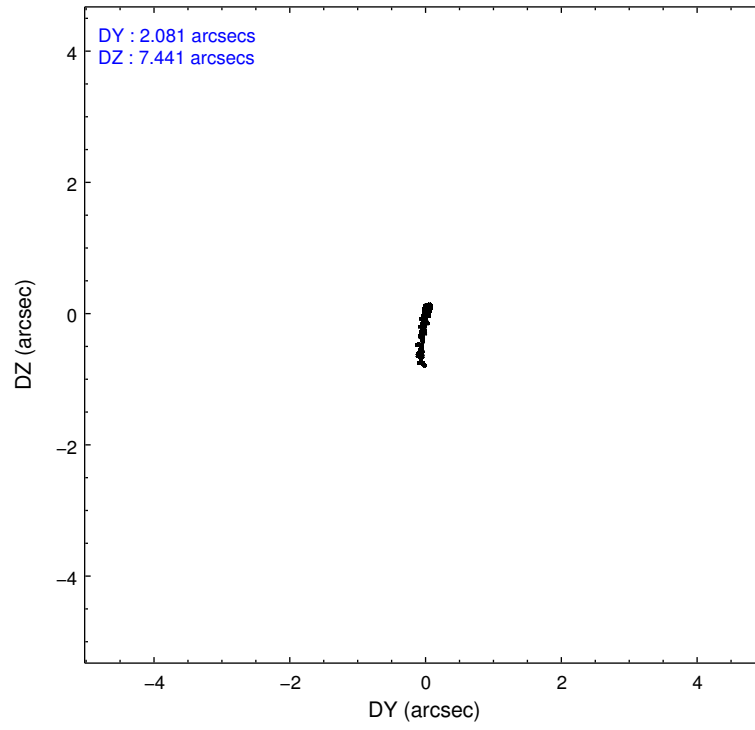
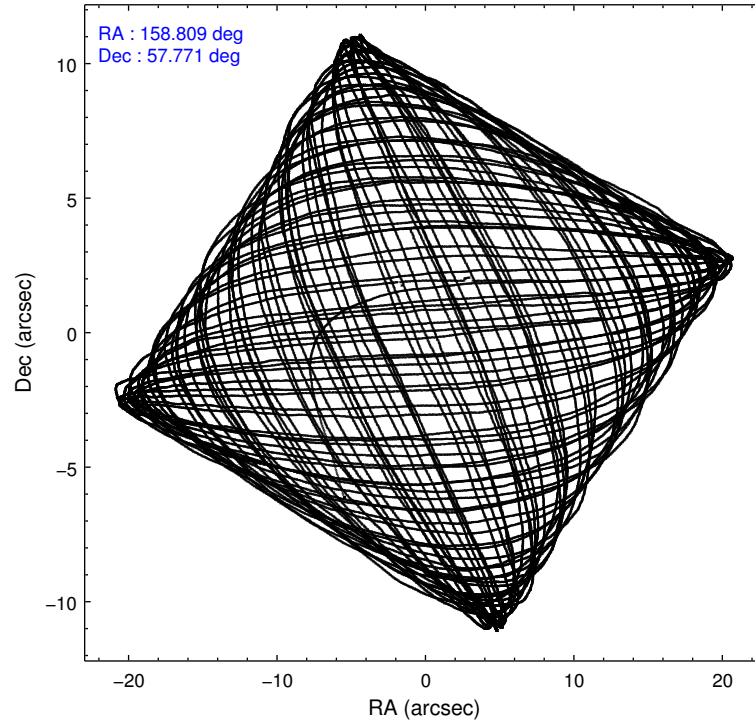
2.1.4 Events

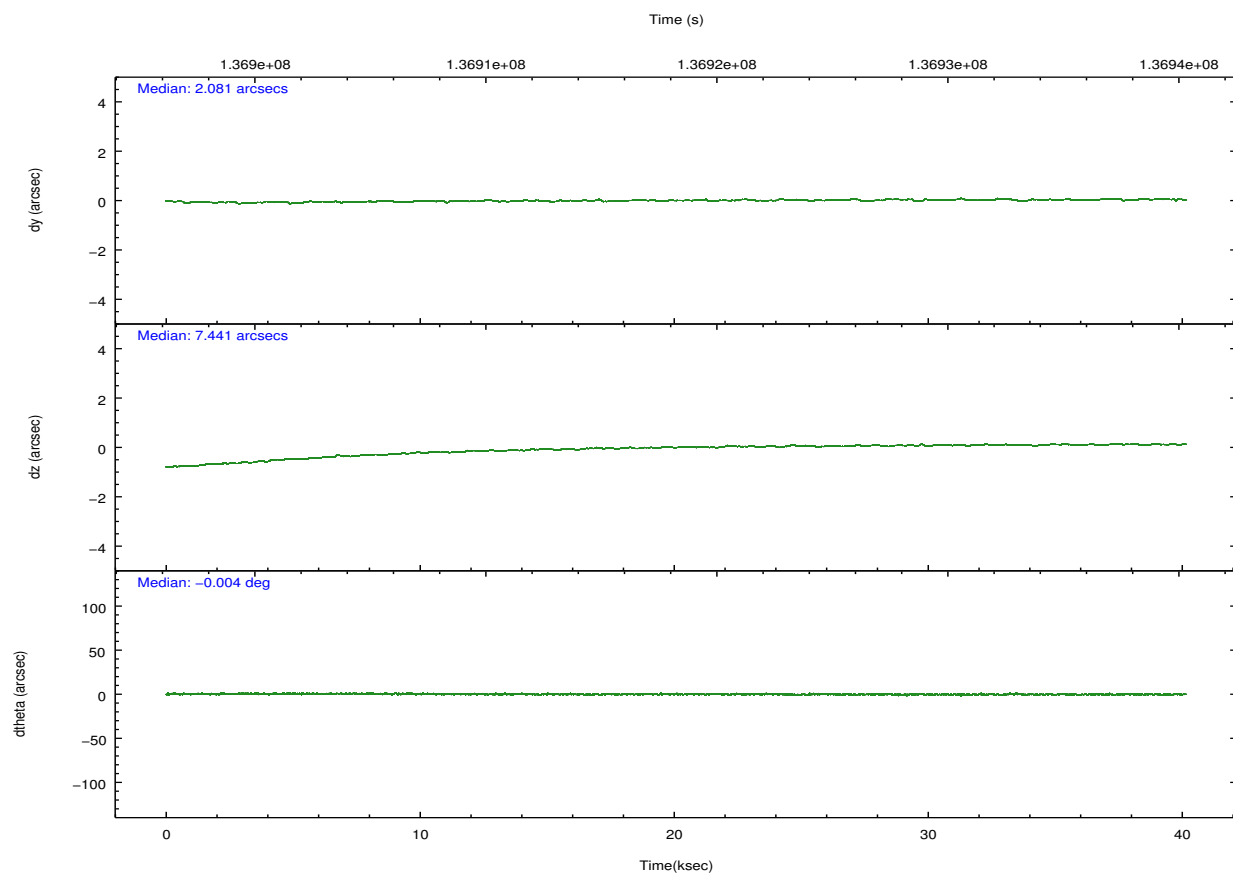
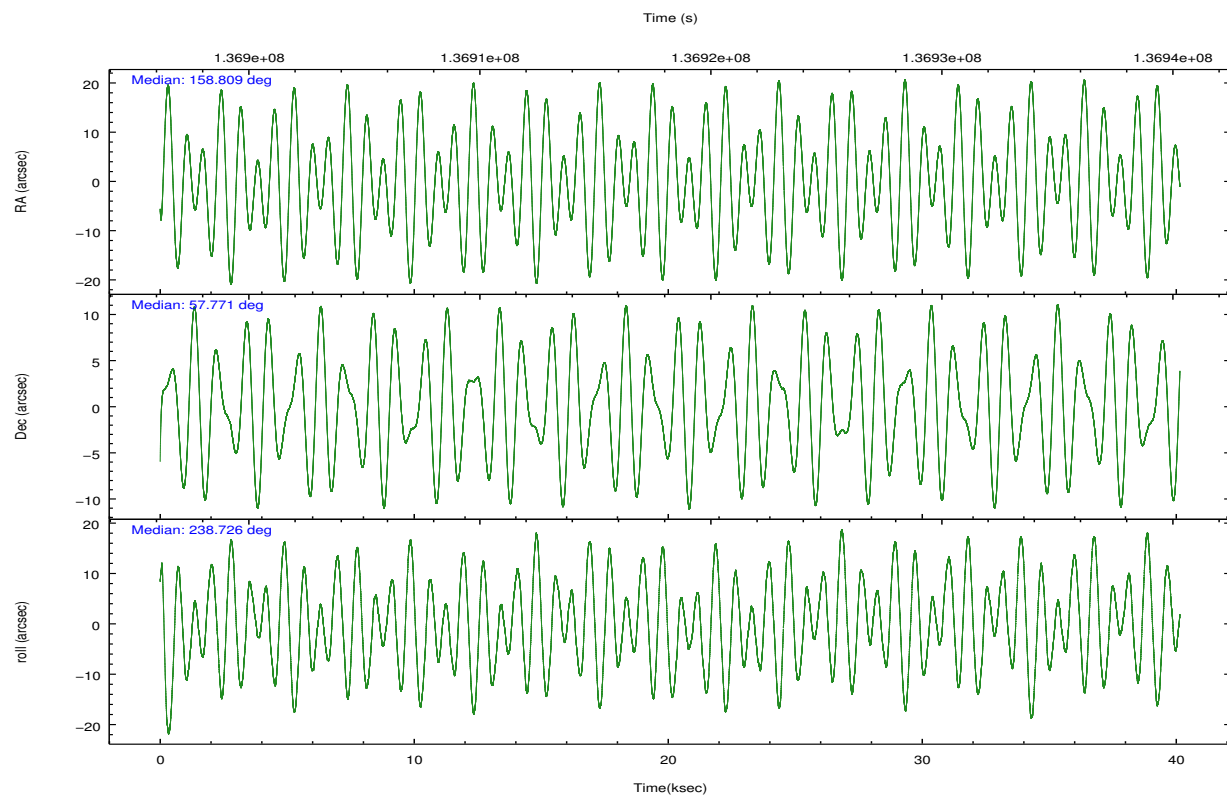
| | ccd 0 | ccd 1 | ccd 2 | ccd 3 | ccd 6 | ccd 7 | | ccd 0 | ccd 1 | ccd 2 | ccd 3 | ccd 6 | ccd 7 |
|-----------------|--------|--------|--------|--------|--------|--------|----------------|--------|--------|--------|--------|--------|--------|
| level 1 events | 238131 | 244886 | 262171 | 263043 | 276425 | 343652 | grade 0 events | 13319 | 13893 | 13190 | 12871 | 11959 | 13188 |
| rejected events | 206857 | 211433 | 231630 | 232796 | 245828 | 202474 | | 5% | 5% | 5% | 4% | 4% | 3% |
| rejected % | 86% | 86% | 88% | 88% | 88% | 58% | grade 1 events | 141 | 107 | 128 | 132 | 152 | 309 |
| | | | | | | | | 0% | 0% | 0% | 0% | 0% | 0% |
| | | | | | | | grade 2 events | 6679 | 6784 | 6520 | 6110 | 6403 | 27739 |
| | | | | | | | | 2% | 2% | 2% | 2% | 2% | 8% |
| | | | | | | | grade 3 events | 3084 | 3382 | 2837 | 2901 | 3037 | 12595 |
| | | | | | | | | 1% | 1% | 1% | 1% | 1% | 3% |
| | | | | | | | grade 4 events | 2757 | 3255 | 2766 | 2848 | 2977 | 12481 |
| | | | | | | | | 1% | 1% | 1% | 1% | 1% | 3% |
| | | | | | | | grade 5 events | 9991 | 10536 | 9295 | 10666 | 11655 | 32570 |
| | | | | | | | | 4% | 4% | 3% | 4% | 4% | 9% |
| | | | | | | | grade 6 events | 5441 | 6142 | 5234 | 5523 | 6225 | 75197 |
| | | | | | | | | 2% | 2% | 1% | 2% | 2% | 21% |
| | | | | | | | grade 7 events | 196719 | 200787 | 222201 | 221992 | 234017 | 169573 |
| | | | | | | | | 82% | 81% | 84% | 84% | 84% | 49% |

2.2 Compared Parameters

| Parameter | Planned | Actual | Parameter | Planned | Actual |
|-----------------------------------|---------------------|-----------------------|---------------------------------------|-----------|---------|
| Instrument | ACIS | ACIS | Obspar format version number | 7 | 7 |
| Detector | ACIS-012367 | ACIS-012367 | Obspar file type | PREDICTED | ACTUAL |
| Grating | NONE | NONE | Obspar update status | NONE | UPDATED |
| Data mode | VFAINT | VFAINT | Number of optional ACIS chips dropped | 0 | 0 |
| Observation mode | POINTING | POINTING | On-chip summing requested | N | N |
| [deg] Pointing RA | 158.810525 | 158.8095500119774 | Subarray requested | NONE | NONE |
| [deg] Pointing Dec | 57.798290 | 57.77087562241152 | Alternating exposures requested | N | N |
| [deg] Pointing Roll | 238.523270 | 238.7327807434521 | [s] Primary exposure time | 0.000000 | 3.2 |
| [mm] SIM focus pos | -0.782348 | -0.7809083437167272 | | | |
| [mm] SIM defocus | 0 | 0.001439871863259334 | | | |
| [mm] SIM translation stage pos | -233.592463 | -233.5874344608287 | | | |
| [mm] SIM translation stage offset | 0 | -0.005018542100998502 | | | |
| [s] Observation start time (MET) | 136898305.184000 | 136897307.54334 | | | |
| Observation start date | 2002-05-04T11:17:21 | 2002-05-04T11:01:47 | | | |
| [s] Observation end time (MET) | 136938305.184000 | 136939396.60755 | | | |
| Observation end date | 2002-05-04T22:24:01 | 2002-05-04T22:43:16 | | | |
| Read mode | TIMED | TIMED | | | |

2.3 Aspect



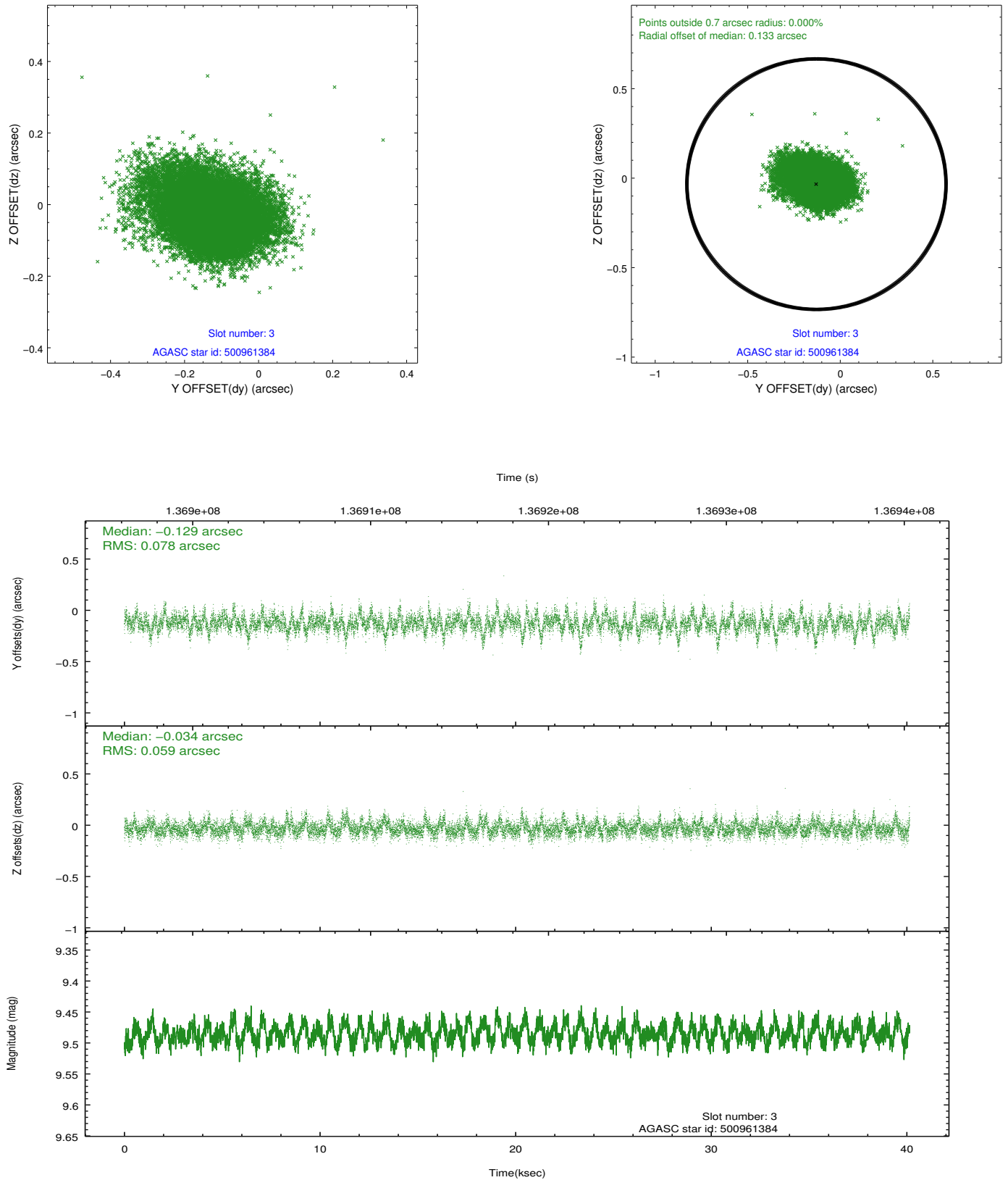


Slot Statistics

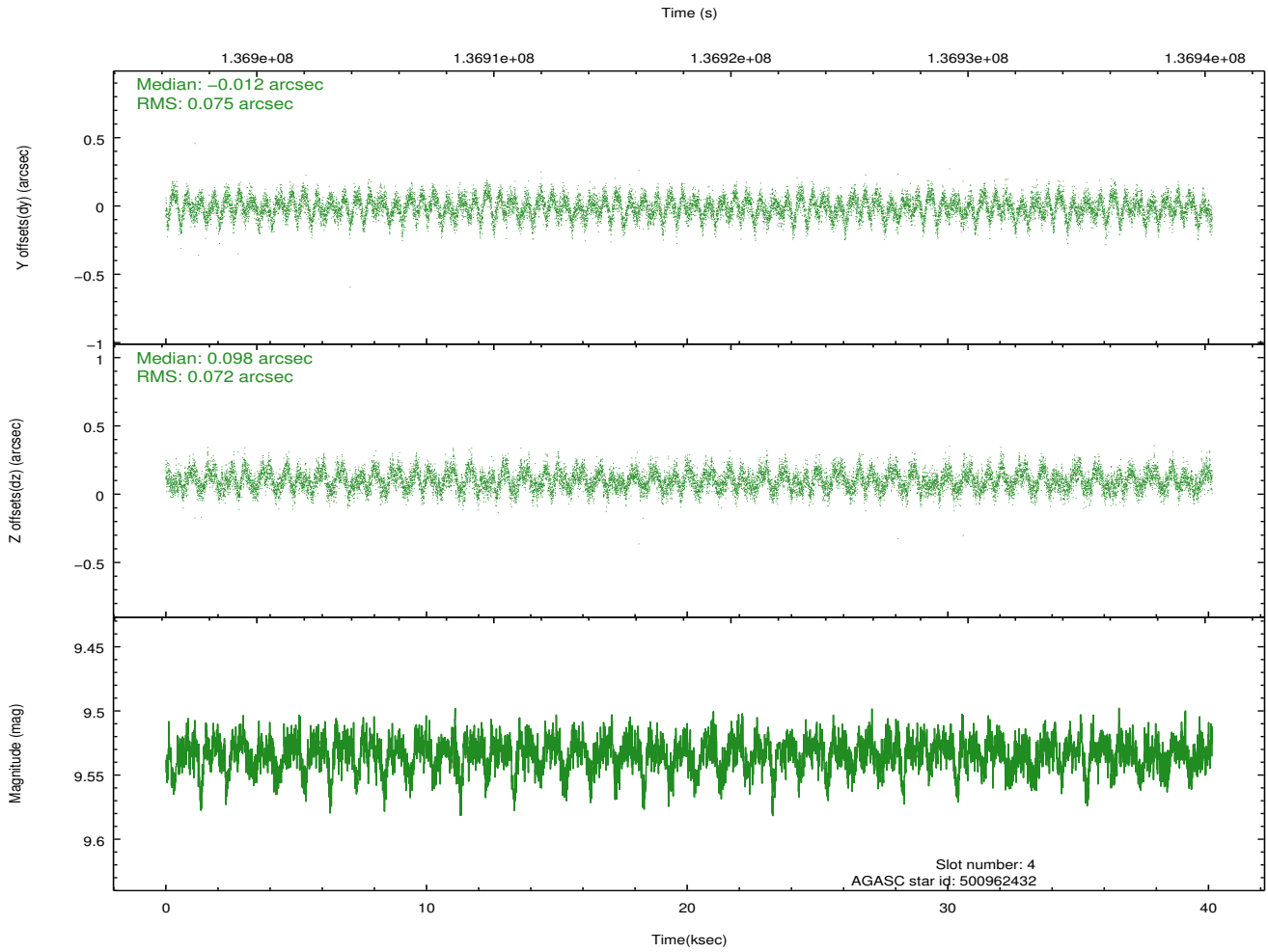
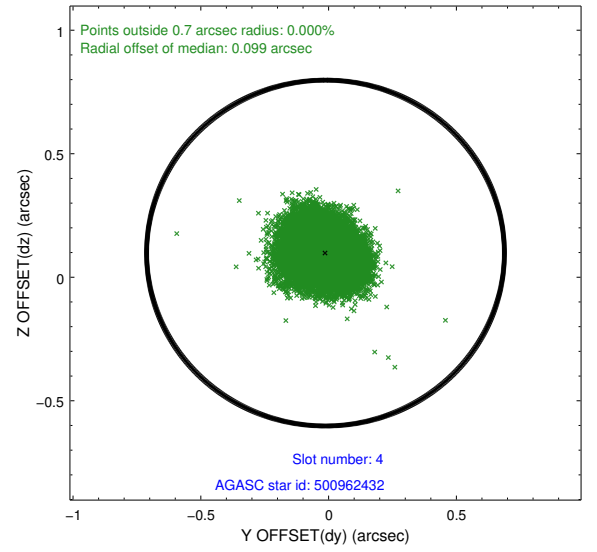
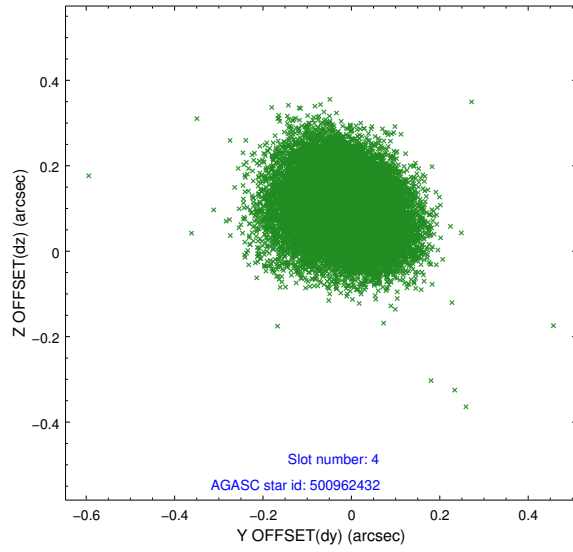
| slot | status | id | mag | n_pts | med_dy | med_dz | dr1 | dr2 | ra | dec | mean_y | mean_z |
|------|--------|-----------|------|-------|--------|--------|-------|-------|------------|-----------|----------|----------|
| 0 | FID | ACIS-I-1 | 7.24 | 9787 | 0.038 | -0.017 | 0.011 | 0.021 | 0.000000 | 0.000000 | 937.81 | -830.73 |
| 1 | FID | ACIS-I-5 | 7.24 | 9786 | 0.115 | 0.136 | 0.007 | 0.011 | 0.000000 | 0.000000 | -1810.27 | 1066.82 |
| 2 | FID | ACIS-I-6 | 7.25 | 9783 | -0.245 | -0.048 | 0.011 | 0.026 | 0.000000 | 0.000000 | 402.97 | 1711.23 |
| 3 | GUIDE | 500961384 | 9.49 | 19568 | -0.129 | -0.034 | 0.100 | 0.178 | 159.416101 | 58.123584 | -1605.43 | 367.94 |
| 4 | GUIDE | 500962432 | 9.53 | 19563 | -0.012 | 0.098 | 0.111 | 0.175 | 158.977500 | 58.020820 | -850.85 | -146.48 |
| 5 | GUIDE | 500960944 | 9.86 | 19494 | 0.099 | -0.142 | 0.123 | 0.210 | 157.785286 | 57.689555 | 1350.34 | -1485.32 |
| 6 | GUIDE | 500568656 | 8.47 | 19575 | 0.064 | 0.094 | 0.071 | 0.115 | 159.217900 | 57.306375 | 1093.70 | 1599.66 |
| 7 | GUIDE | 500568000 | 9.35 | 19542 | -0.018 | -0.011 | 0.109 | 0.176 | 159.814761 | 57.401116 | 188.83 | 2400.73 |

2.4 Star Slots

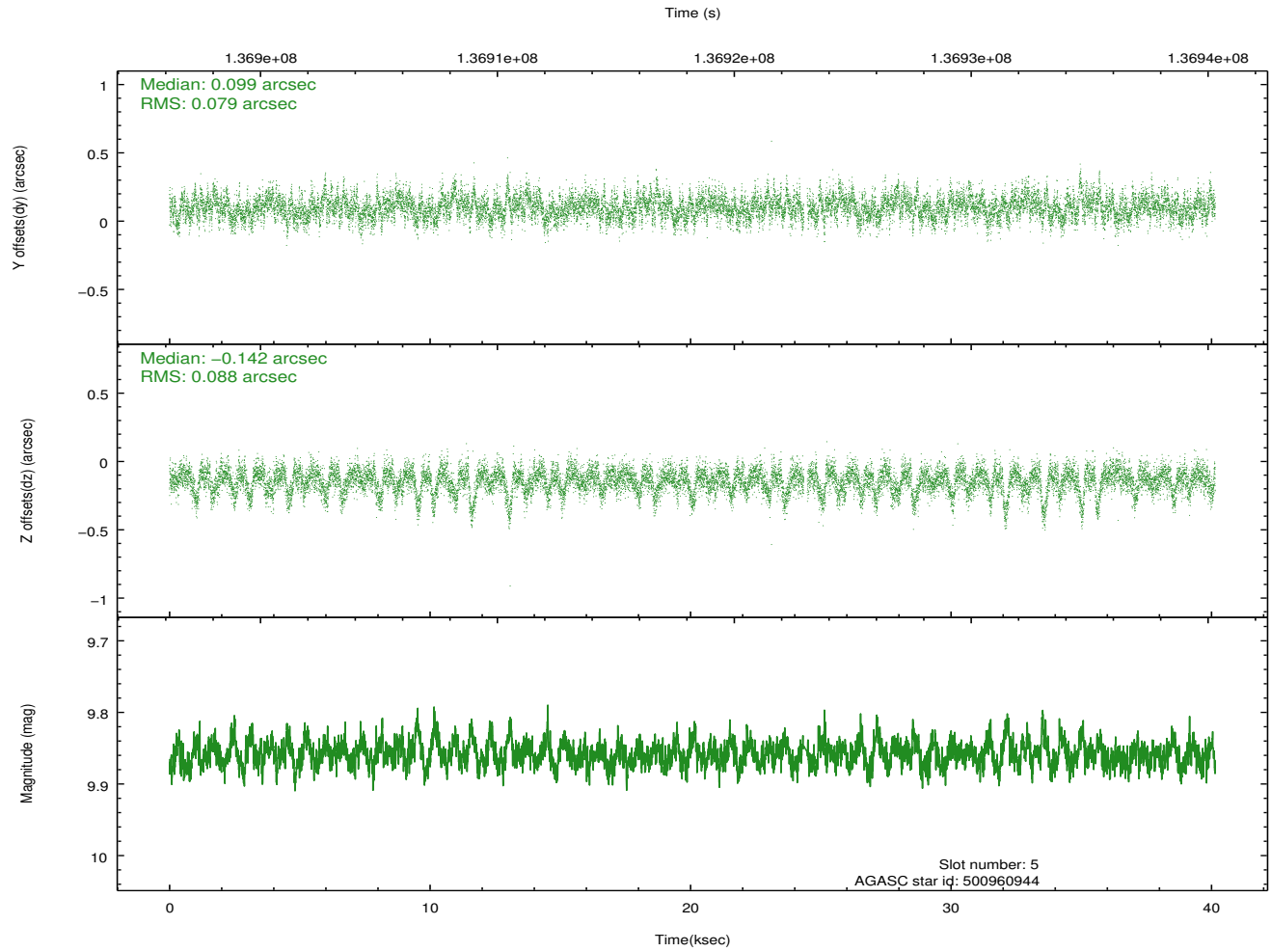
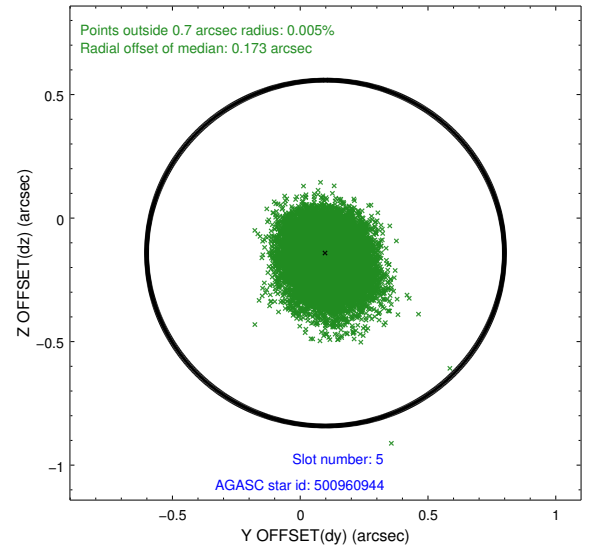
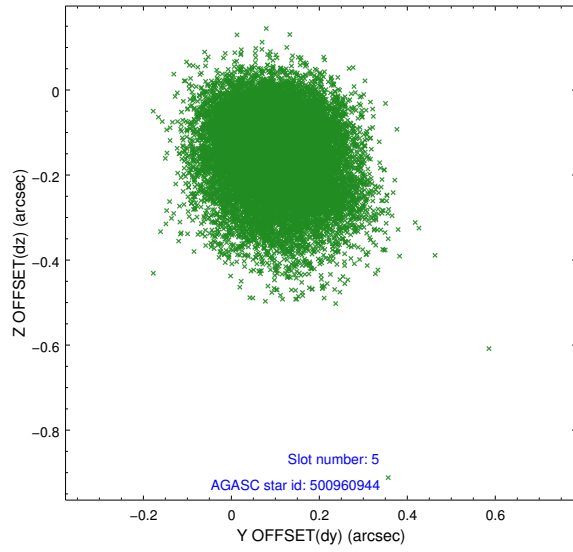
2.4.1 Slot 3



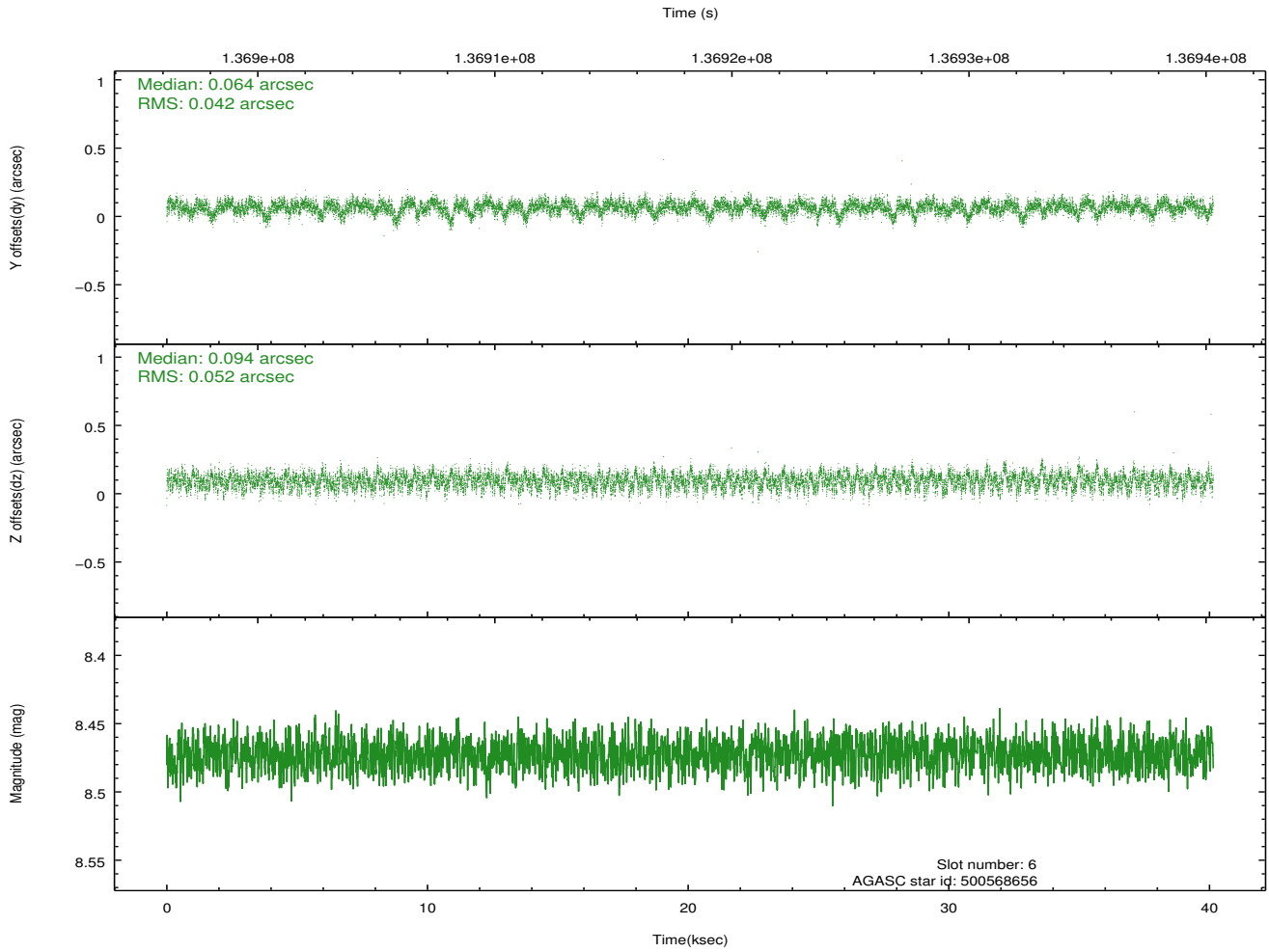
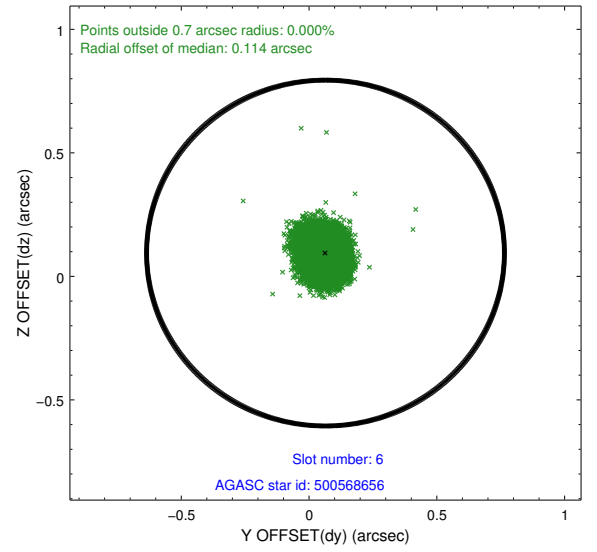
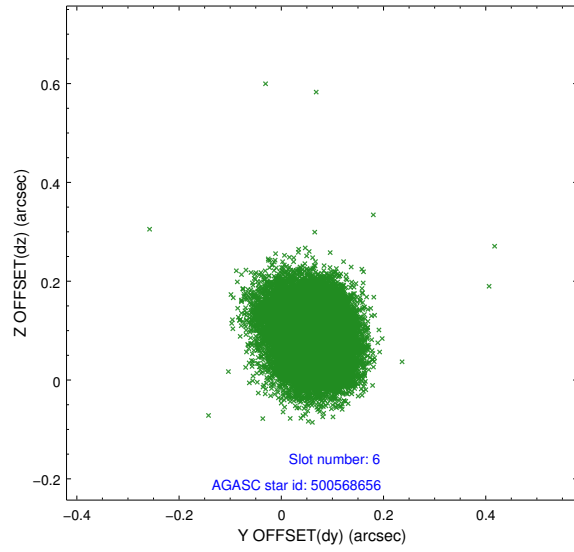
2.4.2 Slot 4



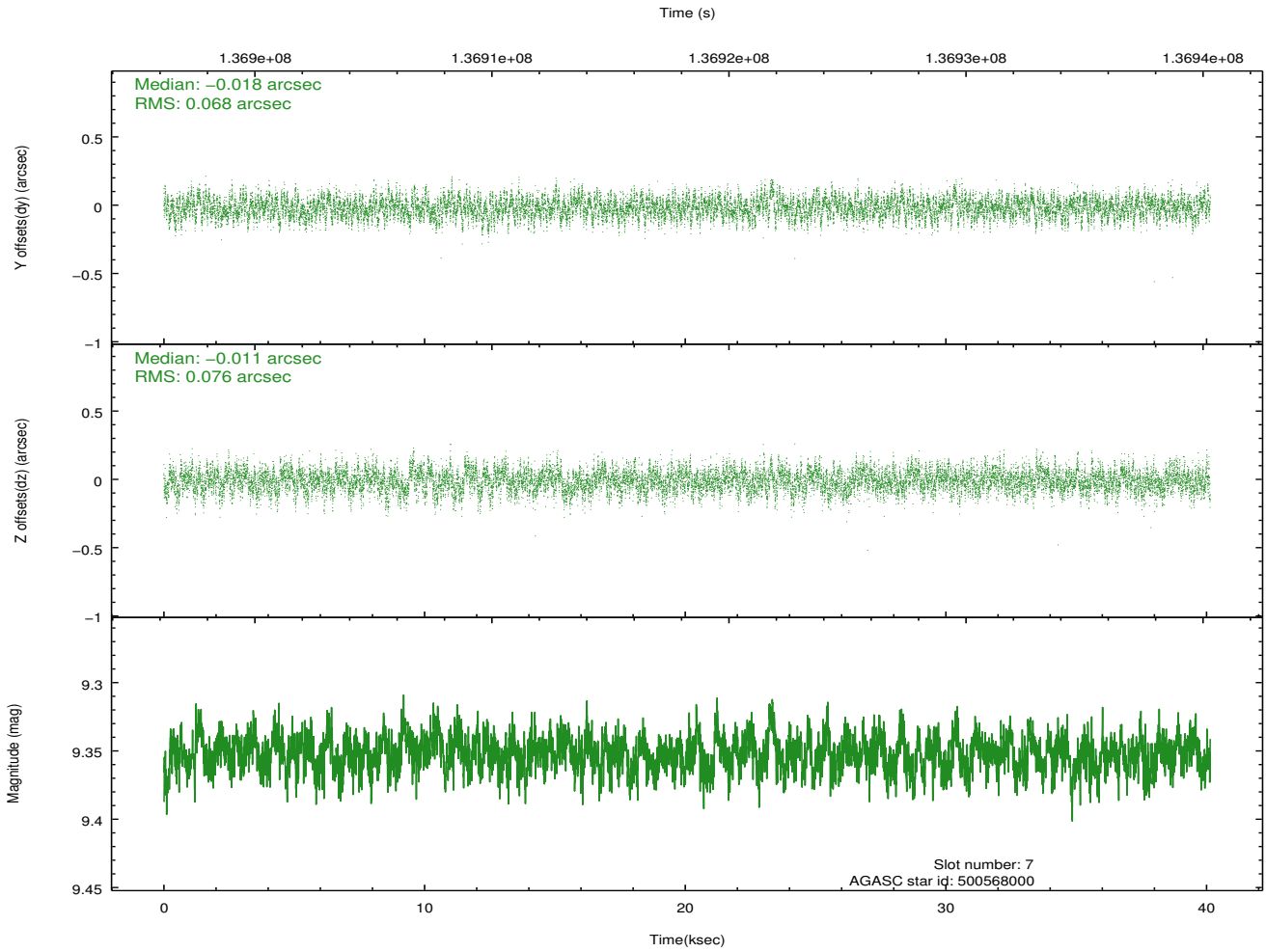
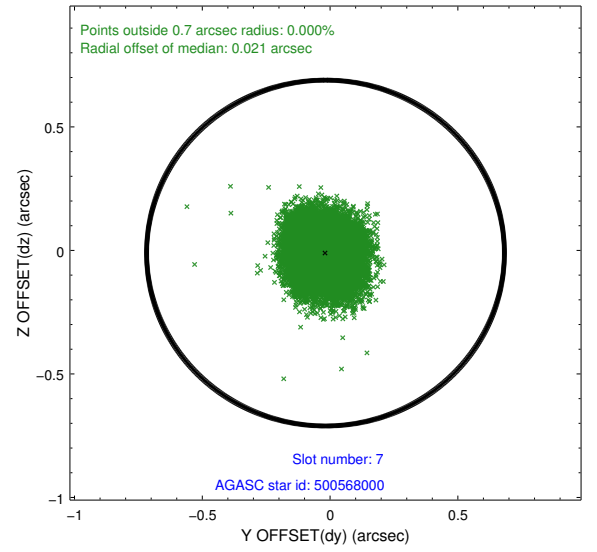
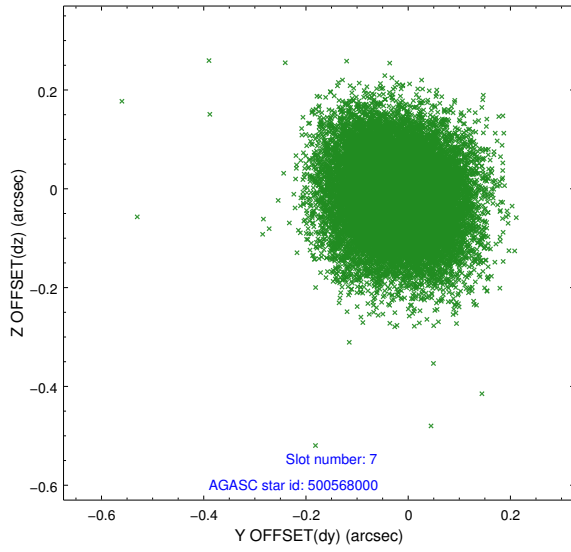
2.4.3 Slot 5



2.4.4 Slot 6

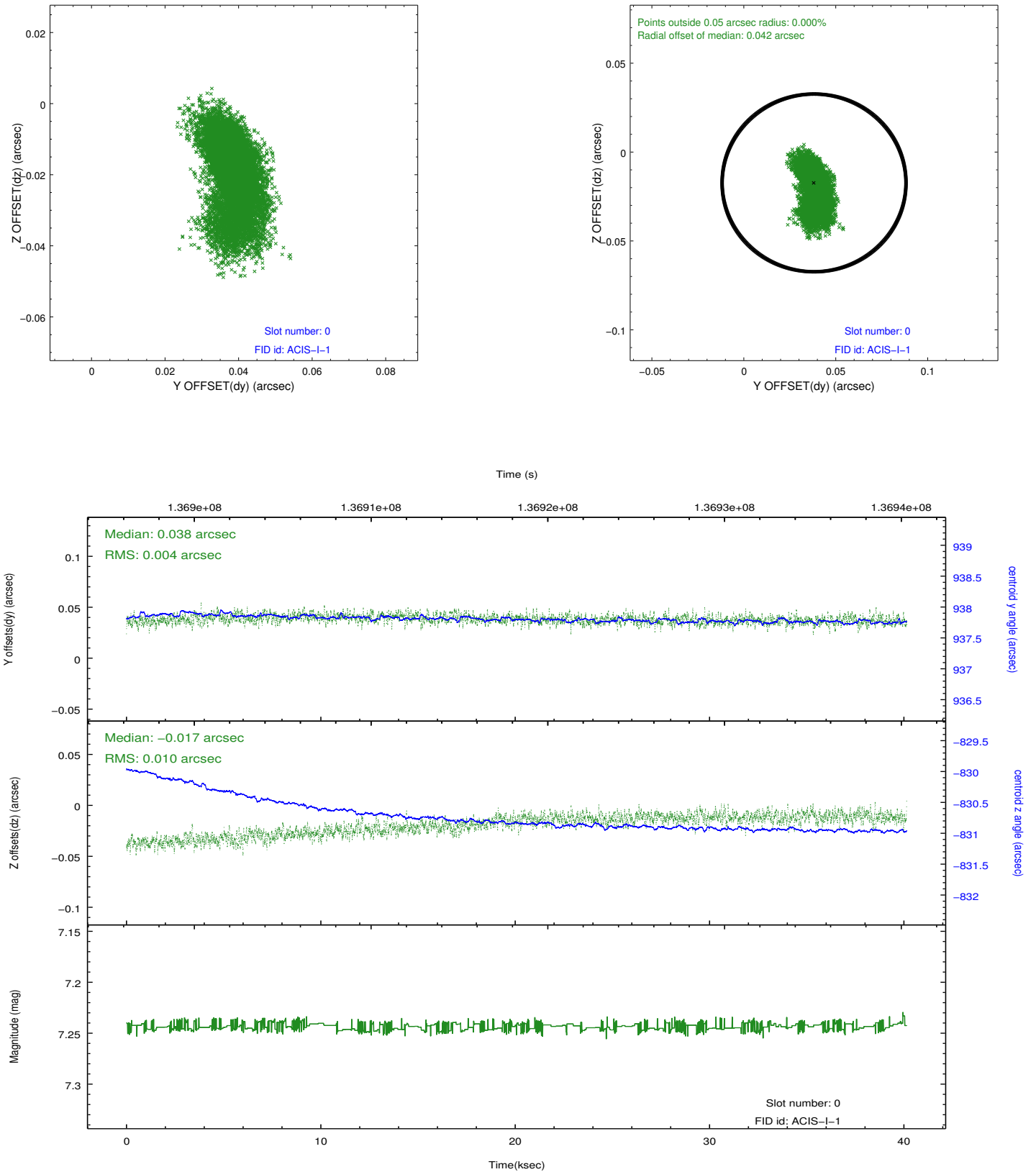


2.4.5 Slot 7

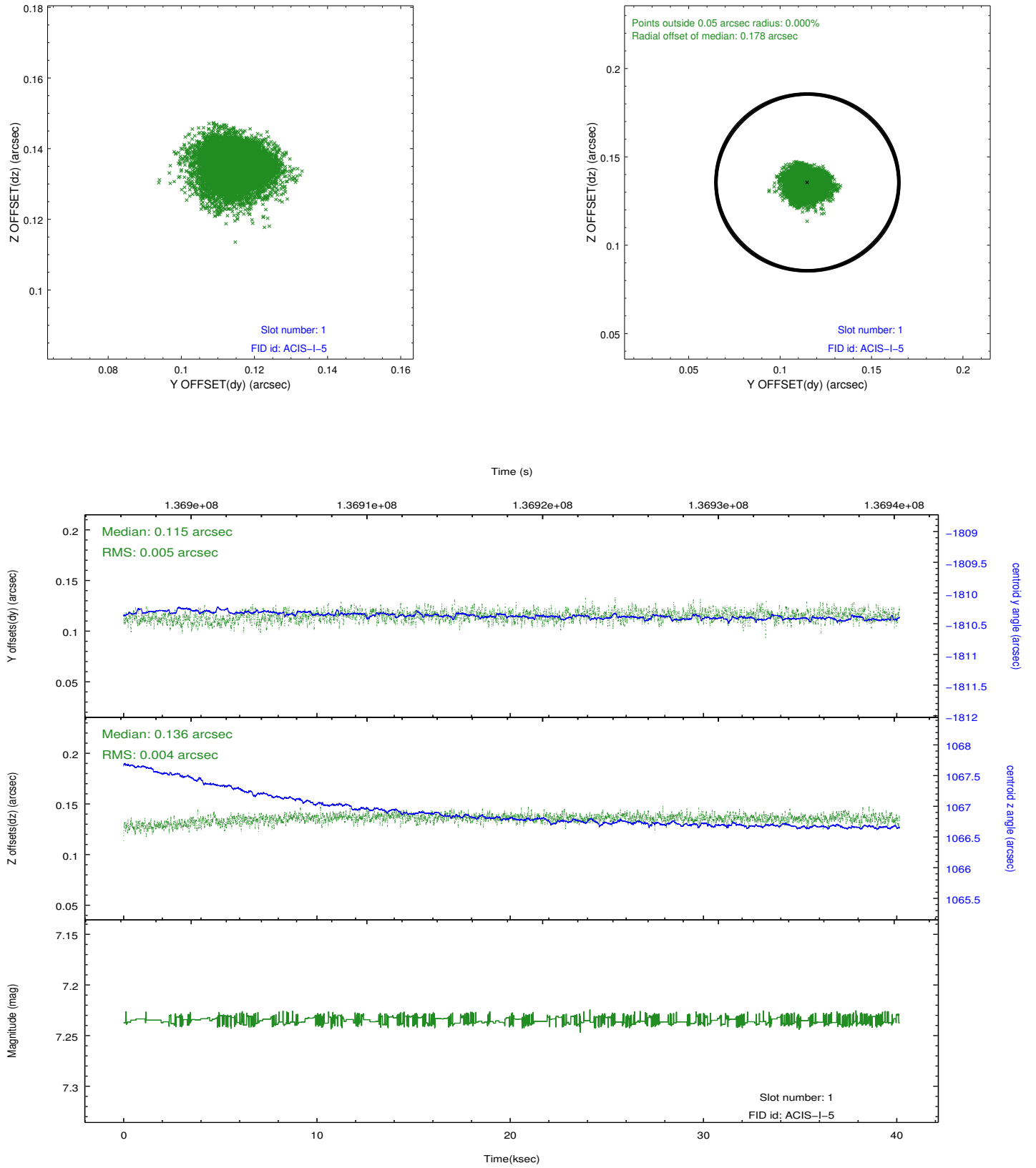


2.5 FID Slots

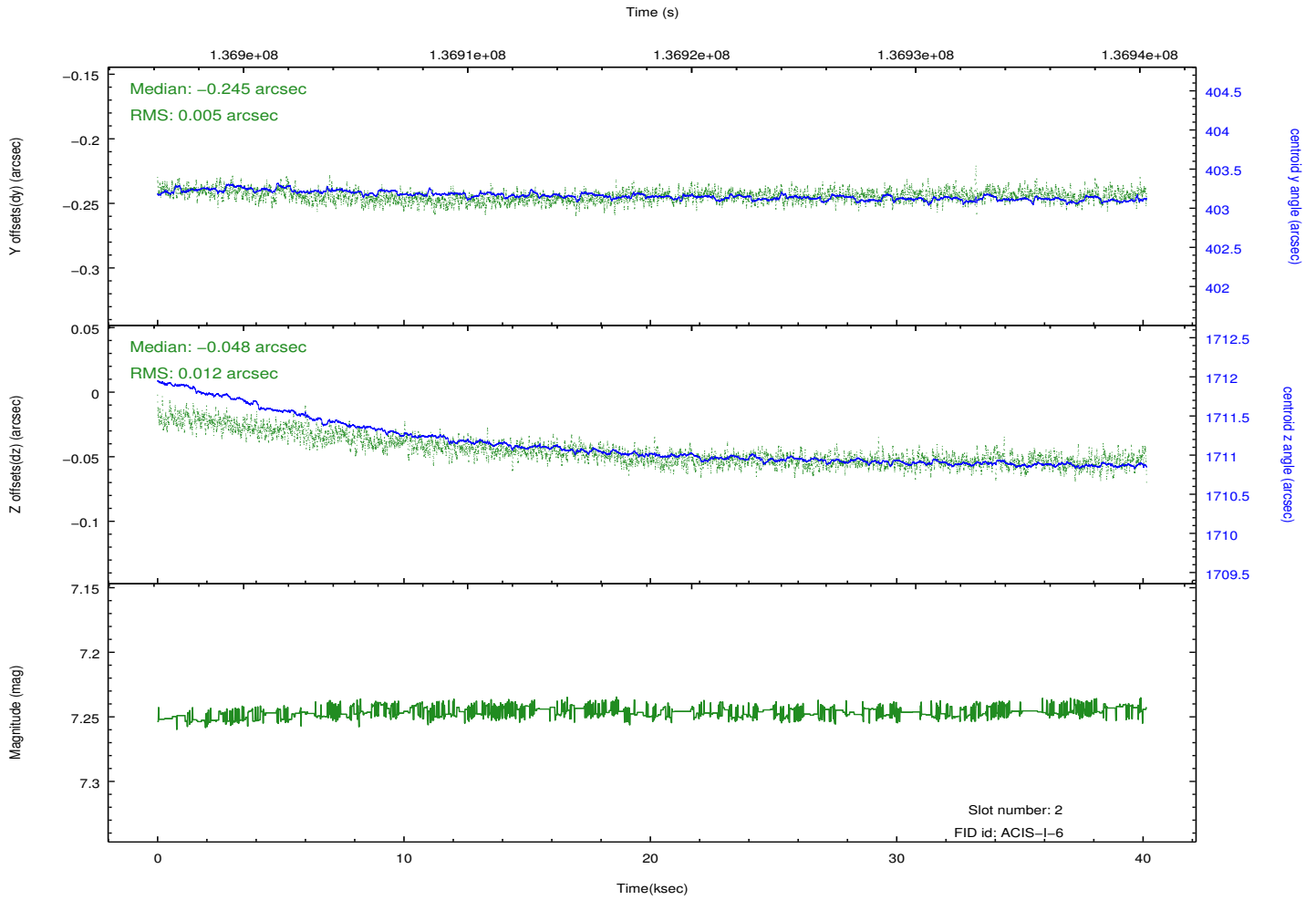
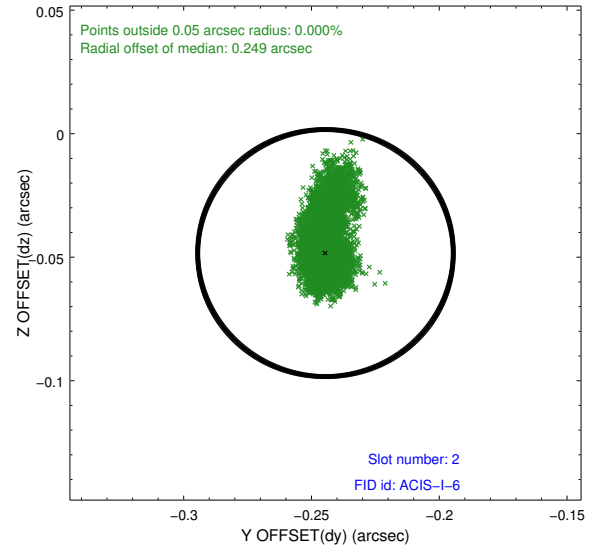
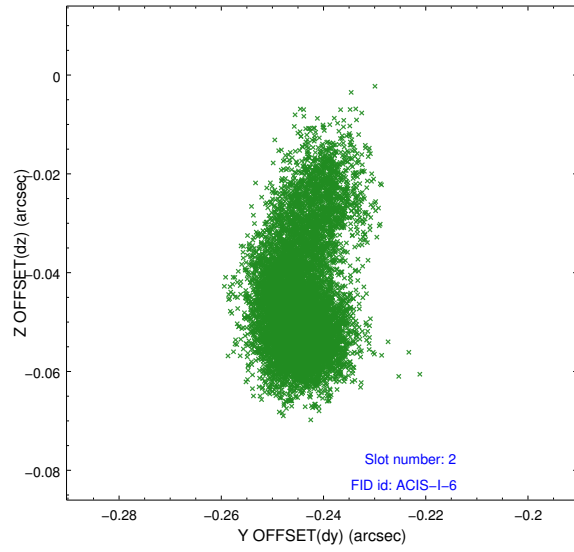
2.5.1 Slot 0



2.5.2 Slot 1



2.5.3 Slot 2



A Summary

A.1 Status

| | |
|----------------------------|---------------|
| V&V Scientist | Beth Sundheim |
| V&V Date (YYYY-MM-DD) | 2012.10.17 |
| V&V Edition | 1 |
| V&V Disposition and Status | OK |
| V&V Charge Time | 40.031 |

A.2 Comments