

V&V Reference Report

L2 ASCDS Version : 7.6.9

Observation 3344 - L2 Version 001
Chandra X-Ray Center

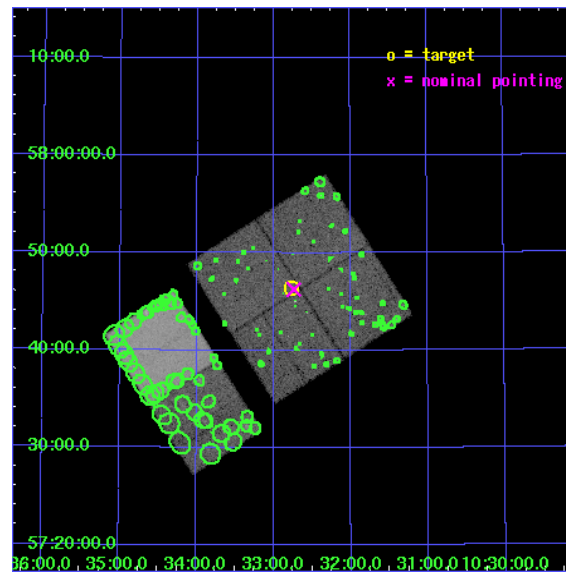
L2 Processing Date : Sep 14 2006

Contents

1	Front	2
2	OBI	3
2.1	OBI	3
2.1.1	Images	3
2.1.2	Bias	3
2.1.3	Parameters	4
2.1.4	Events	4
2.2	Compared Parameters	5
2.3	Aspect	6
2.4	Star Slots	9
2.4.1	Slot 3	9
2.4.2	Slot 4	10
2.4.3	Slot 5	11
2.4.4	Slot 6	12
2.4.5	Slot 7	13
2.5	FID Slots	14
2.5.1	Slot 0	14
2.5.2	Slot 1	15
2.5.3	Slot 2	16
3	Point Sources	17
A	Summary	18
A.1	Status	18
A.2	Comments	18

1 Front

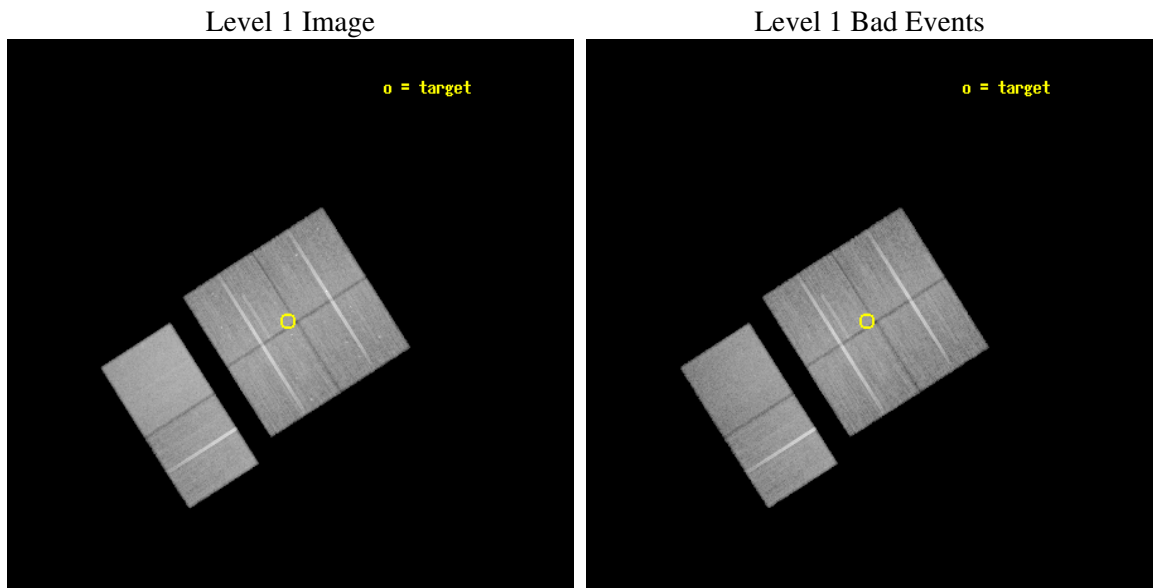
seq_num	900183
obs_id	3344
title	WIDE-FIELD CHANDRA SURVEY OF THE LOCKMAN HOLE-NORTHWEST
observer	Prof. AMY BARGER
object	LH-NW-7
dtcycle	0
cycle	P
ra_targ	158.191666
dec_targ	57.773609
ra_nom	158.18443968117
dec_nom	57.770975230478
roll_nom	237.48812358975
revision	2
ontime	39039.958894283
livetime	38545.611427722
ontime0	39036.717904091
ontime1	39030.235973597
ontime2	39036.717934012
ontime3	39039.958894283
ontime6	39036.717924029
ontime7	39043.199854553
l2events	262348



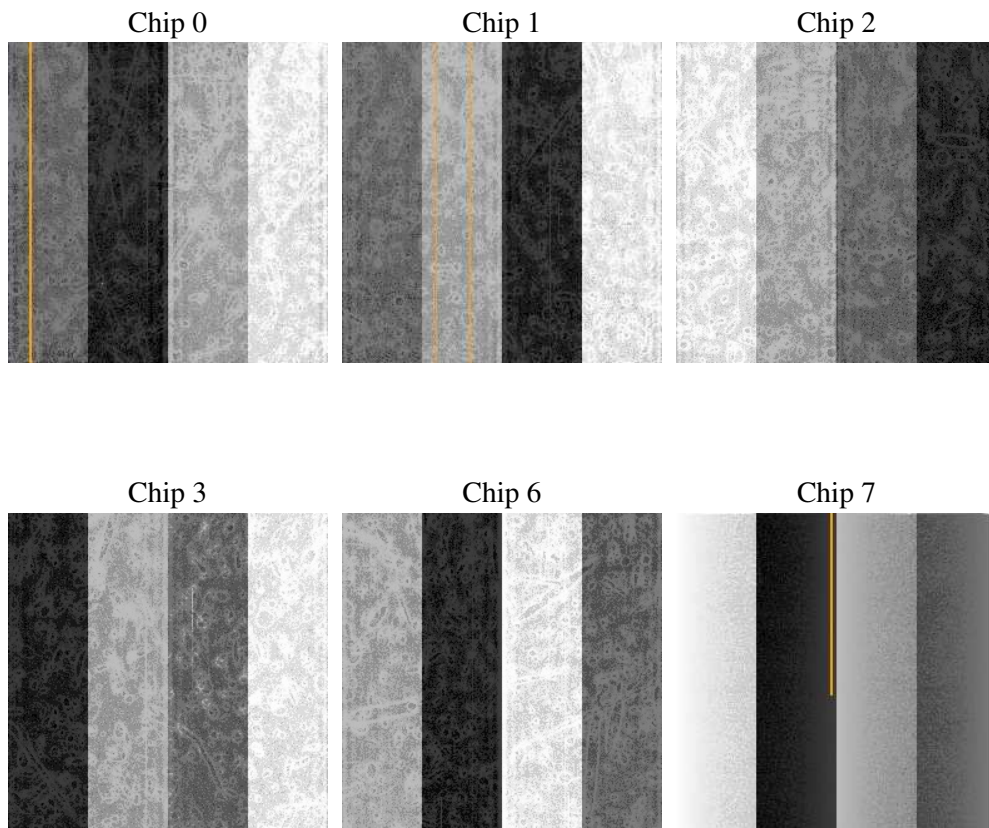
2 OBI

2.1 OBI

2.1.1 Images



2.1.2 Bias



2.1.3 Parameters

obi_num	0
ascdsver	7.6.9
caldsver	3.2.3
date	2006-09-14T22:45:09
revision	2

sched_exp_time	39000.000000
ontime	39044.327781707
ontime0	39041.086791515
ontime1	39034.604880929
ontime2	39041.086841345
ontime3	39044.327781707
ontime6	39041.086811453
ontime7	39047.568761885
l1events	1611079

2.1.4 Events

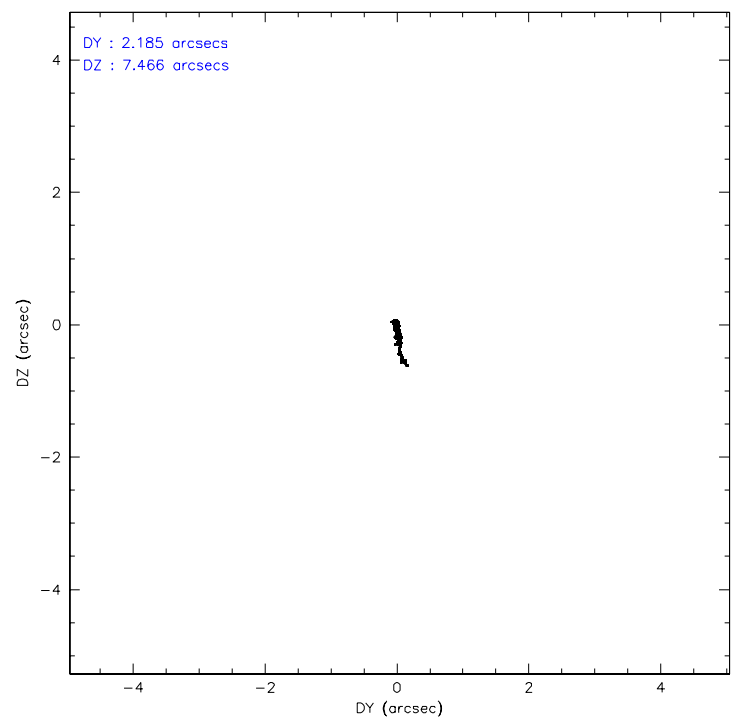
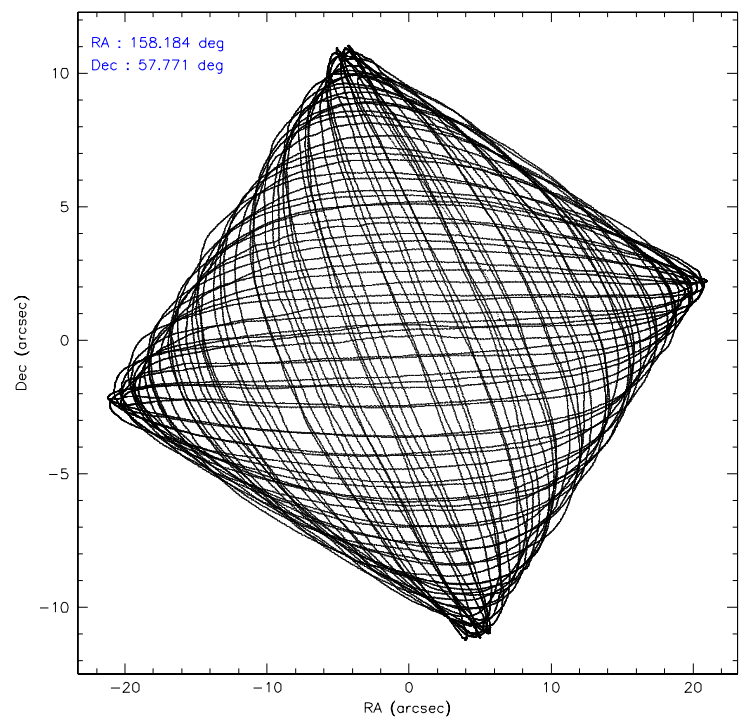
	ccd 0	ccd 1	ccd 2	ccd 3	ccd 6	ccd 7
level 1 events	237657	242274	261918	260112	273469	335649
rejected events	204813	208068	229988	229735	241920	207587
rejected %	86%	85%	87%	88%	88%	61%

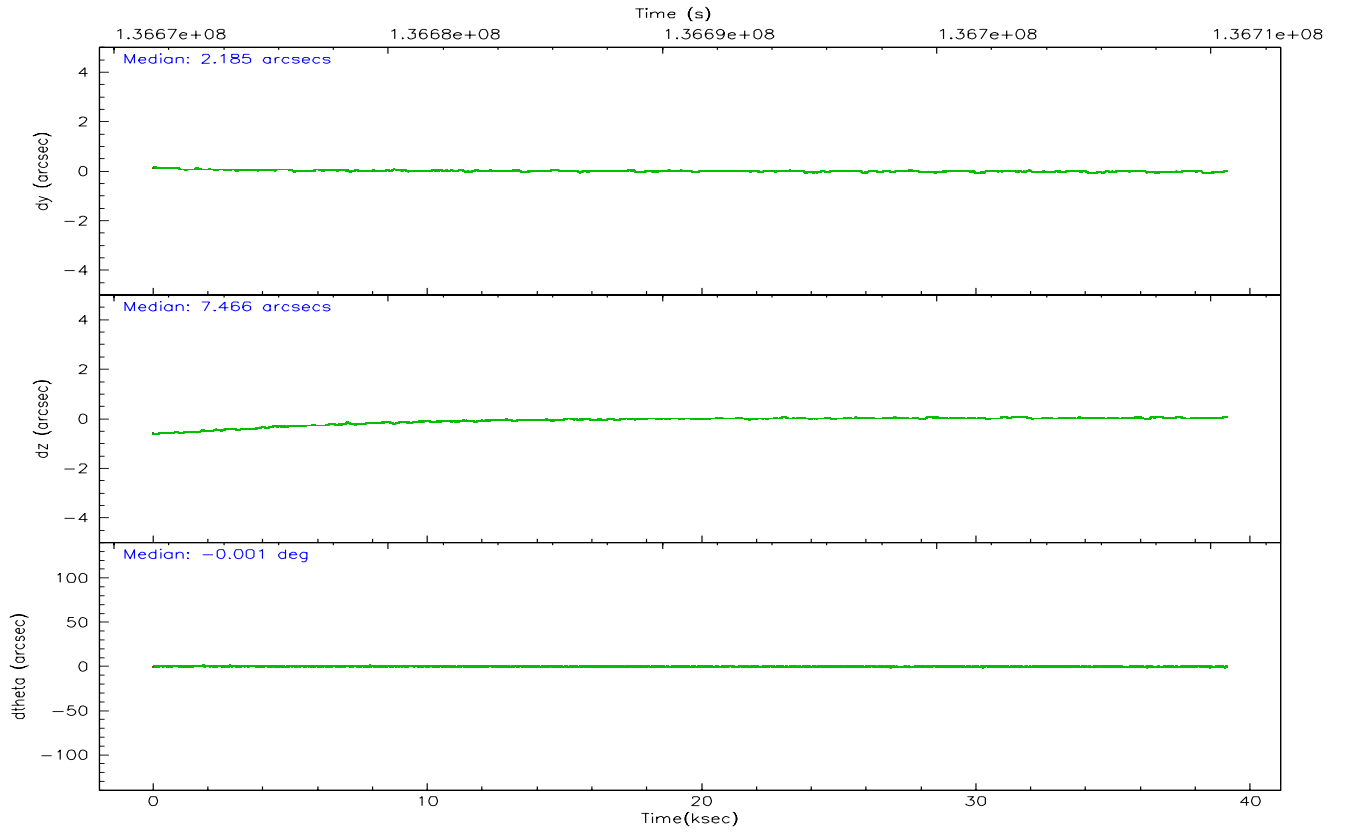
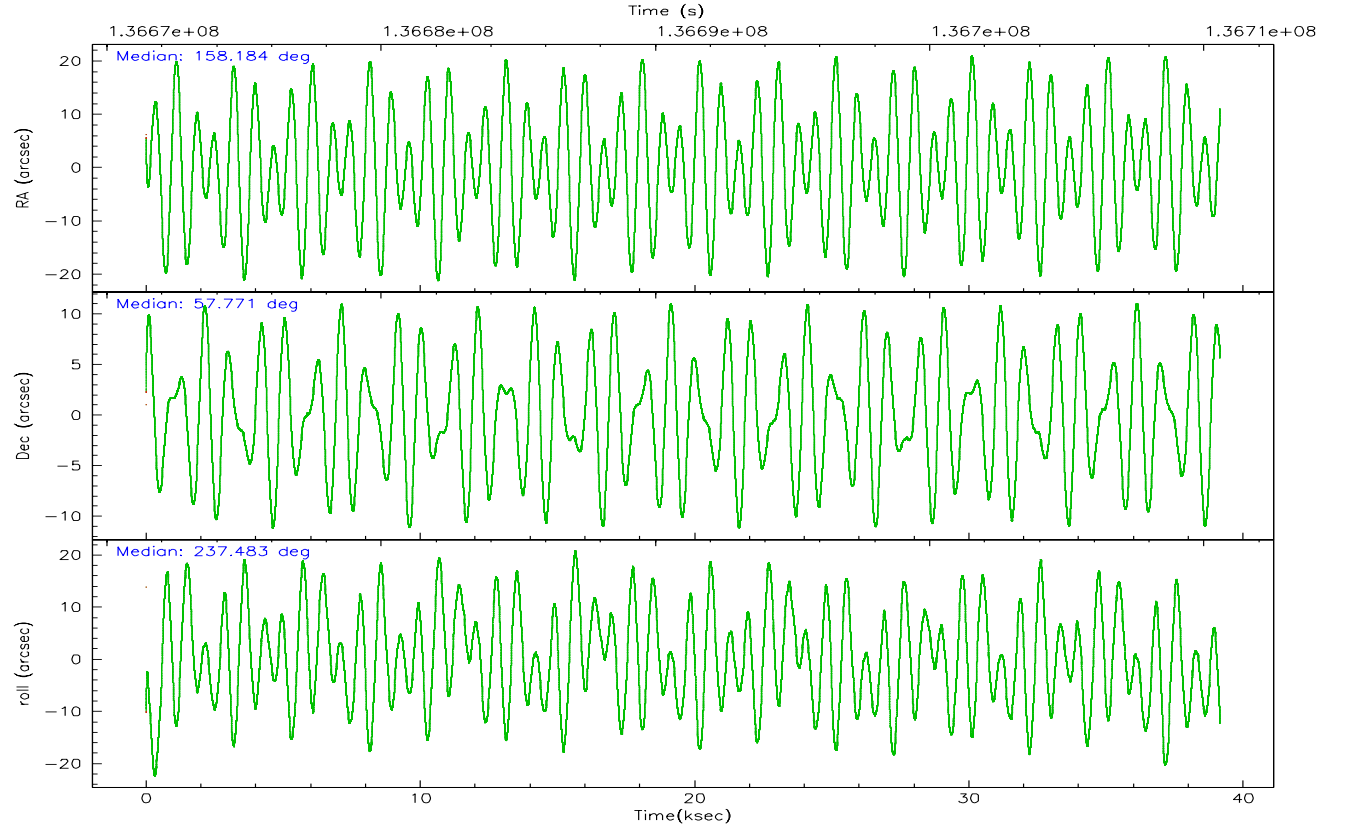
	ccd 0	ccd 1	ccd 2	ccd 3	ccd 6	ccd 7
grade 0 events	14117	14060	13864	12564	12434	7549
	5%	5%	5%	4%	4%	2%
grade 1 events	128	142	117	120	129	200
	0%	0%	0%	0%	0%	0%
grade 2 events	7180	7131	6944	6396	6781	31529
	3%	2%	2%	2%	2%	9%
grade 3 events	2965	3322	2800	2897	3013	6654
	1%	1%	1%	1%	1%	1%
grade 4 events	2893	3326	2919	2896	2944	6523
	1%	1%	1%	1%	1%	1%
grade 5 events	9408	10202	8988	10086	11468	22534
	3%	4%	3%	3%	4%	6%
grade 6 events	5691	6368	5405	5626	6384	75815
	2%	2%	2%	2%	2%	22%
grade 7 events	195275	197723	220881	219527	230316	184845
	82%	81%	84%	84%	84%	55%

2.2 Compared Parameters

Parameter	Planned	Actual	Parameter	Planned	Actual
Instrument	ACIS	ACIS	Obspar format version number	6	6
Detector	ACIS-012367	ACIS-012367	Obspar file type	PREDICTED	ACTUAL
Grating	NONE	NONE	Obspar update status	NONE	UPDATED
Data mode	VFAINT	VFAINT	Number of optional ACIS chips dropped	0	0
Observation mode	POINTING	POINTING	On-chip summing requested	N	N
Pointing RA	158.186542	158.1844396811697	Subarray requested	NONE	NONE
Pointing Dec	57.798329	57.77097523047817	Alternating exposures requested	N	N
Pointing Roll	237.277661	237.4881235897484	Primary exposure time	0.000000	3.2
SIM focus pos (mm)	-0.782348	-0.7809083437167272			
SIM defocus (mm)	0	0.001439871863259334			
SIM translation stage pos (mm)	-233.592463	-233.5874344608287			
SIM translation stage offset (mm)	0	-0.005018542100998502			
Observation start time	136671587.184000	136670586.7591			
Observation start date	2002-05-01T20:18:43	2002-05-01T20:03:06			
Observation end time	136710587.184000	136711214.68575			
Observation end date	2002-05-02T07:08:43	2002-05-02T07:20:14			
Read mode	TIMED	TIMED			

2.3 Aspect



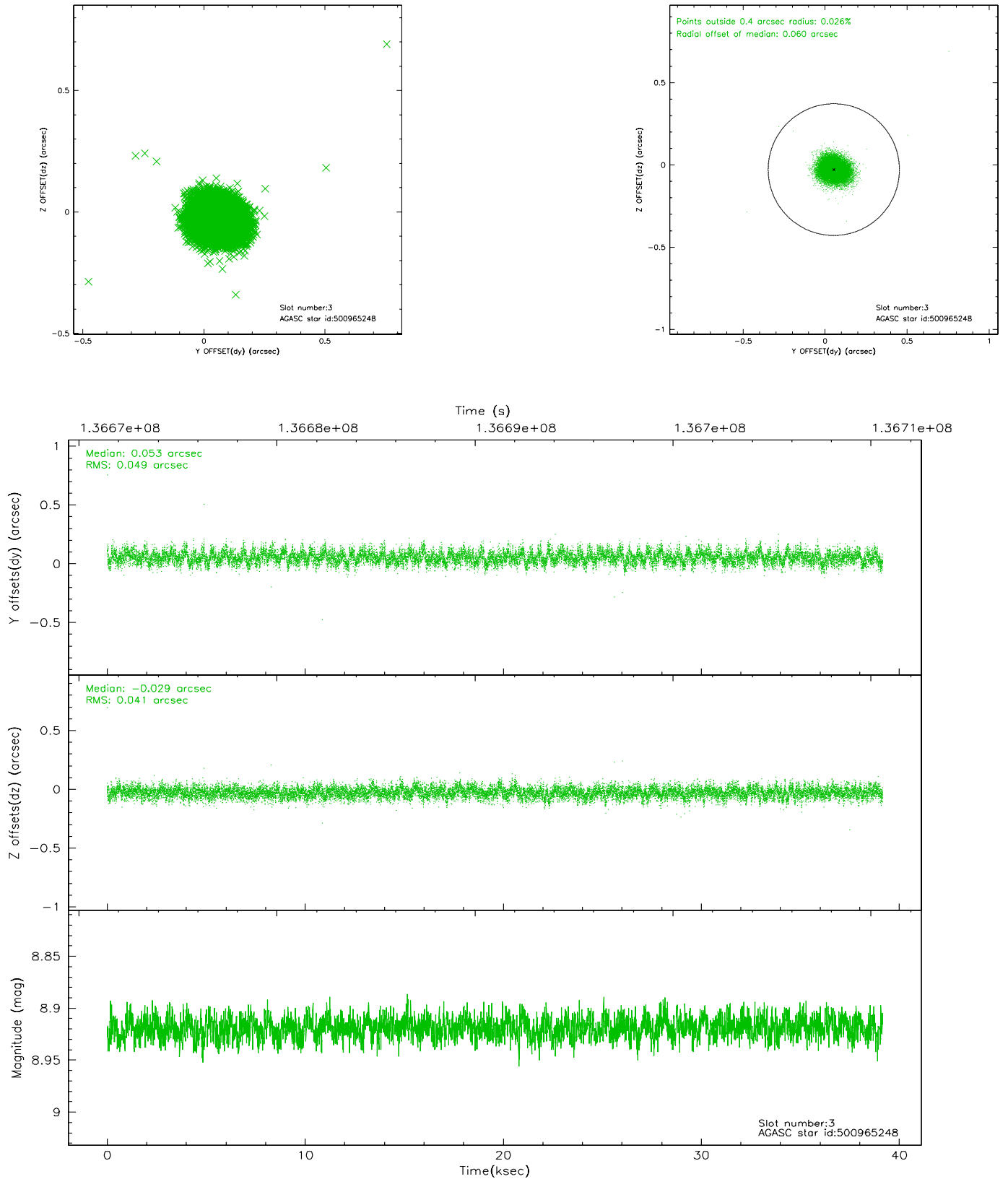


Slot Statistics

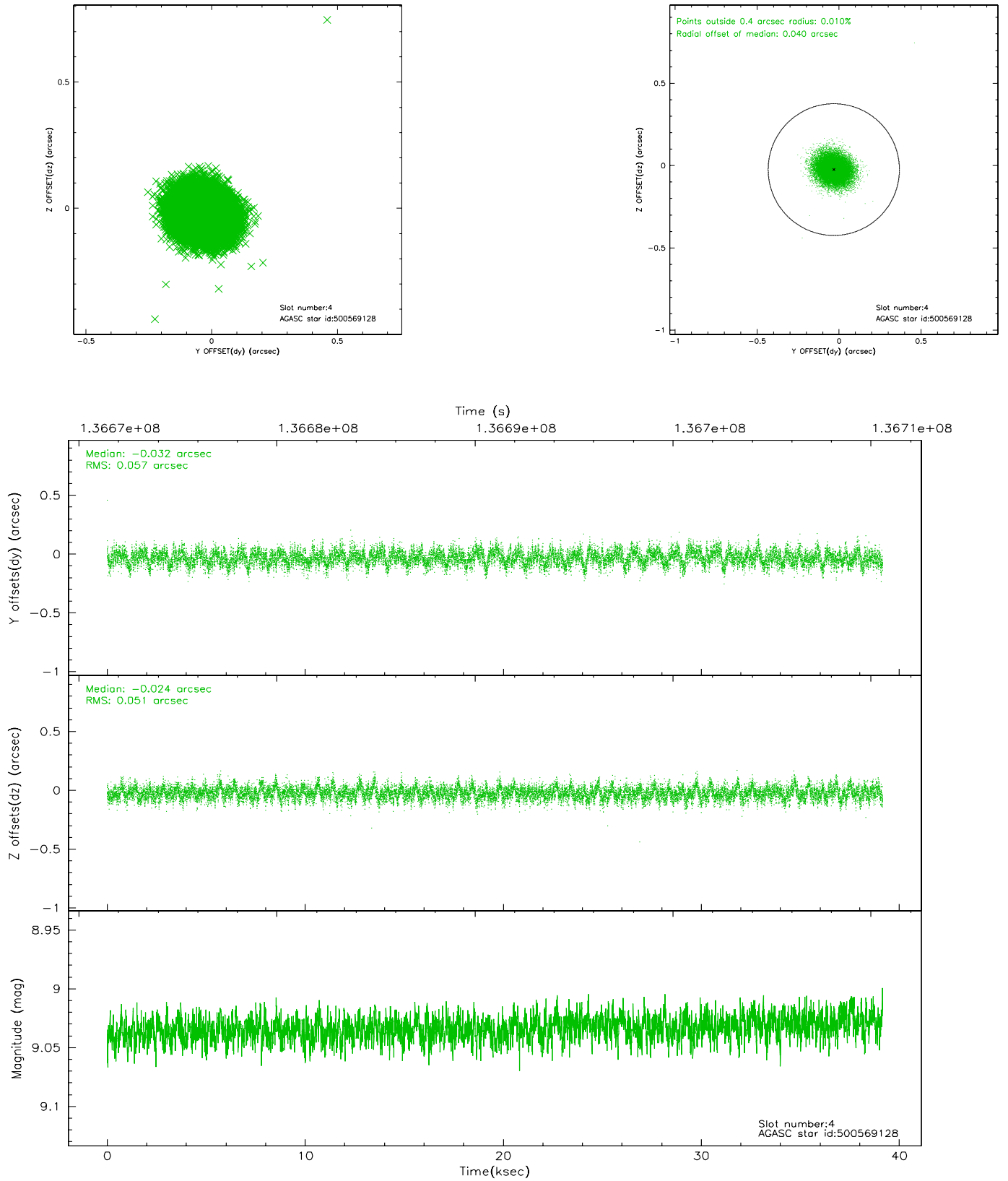
slot	status	id	mag	n_pts	med_dy	med_dz	dr1	dr2	ra	dec	mean_y	mean_z
0	FID	ACIS-I-1	7.24	9553	-0.030	0.065	0.008	0.016	0.000000	0.000000	937.58	-830.74
1	FID	ACIS-I-5	7.24	9547	-0.012	0.040	0.006	0.010	0.000000	0.000000	-1810.46	1066.77
2	FID	ACIS-I-6	7.26	9551	-0.049	-0.035	0.008	0.016	0.000000	0.000000	403.13	1711.17
3	GUIDE	500965248	8.92	19093	0.053	-0.029	0.067	0.109	157.040068	57.653140	1617.28	-1584.49
4	GUIDE	500569128	9.03	19095	-0.032	-0.024	0.082	0.132	157.930103	57.115848	2336.27	906.46
5	GUIDE	500959408	9.51	19090	0.095	-0.077	0.088	0.148	157.361573	57.862425	651.49	-1458.28
6	GUIDE	500961384	9.51	19086	-0.091	0.070	0.107	0.170	159.416101	58.123584	-2267.28	1322.53
7	GUIDE	500962432	9.51	19020	-0.030	0.060	0.106	0.171	158.977500	58.020820	-1497.21	831.67

2.4 Star Slots

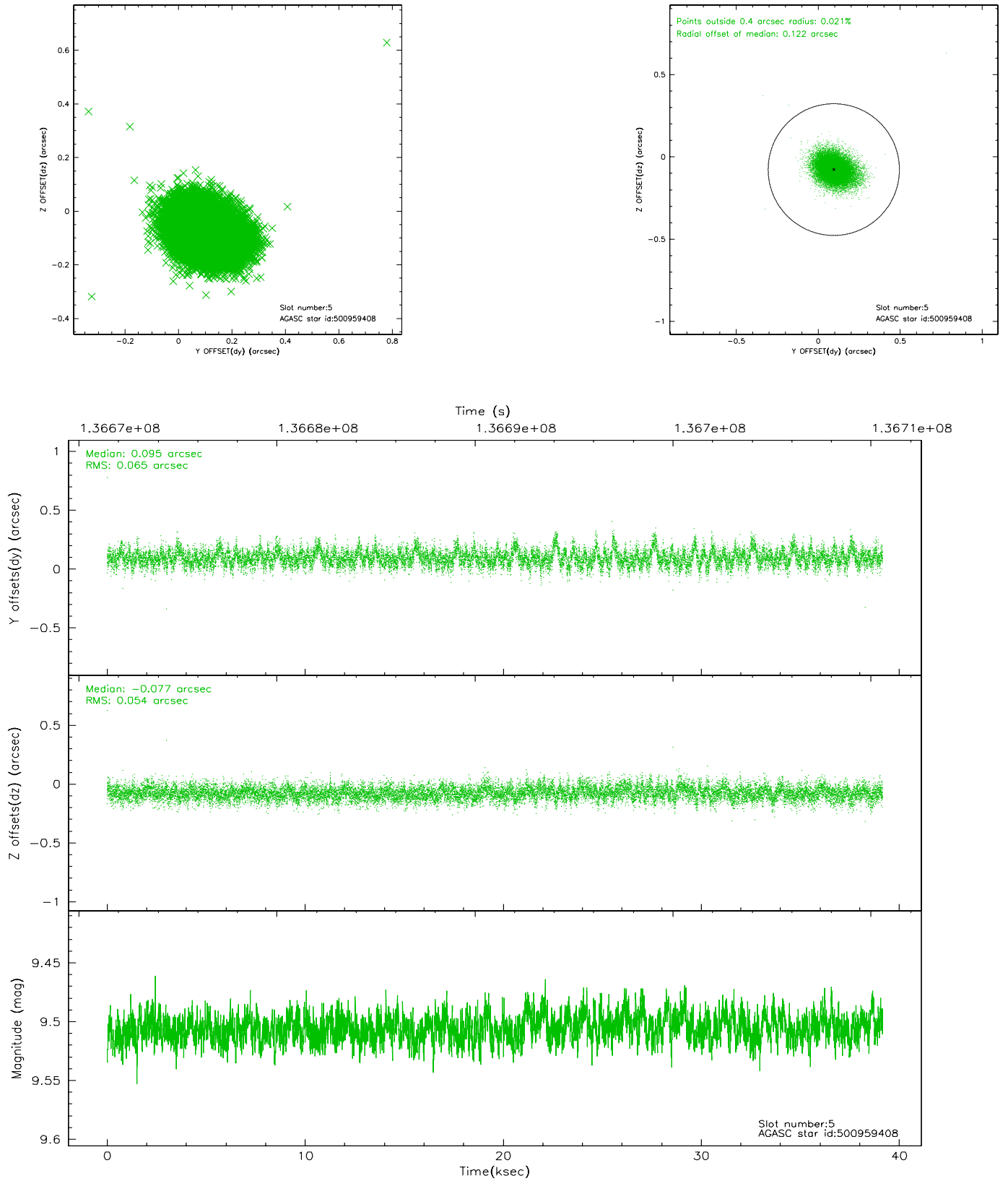
2.4.1 Slot 3



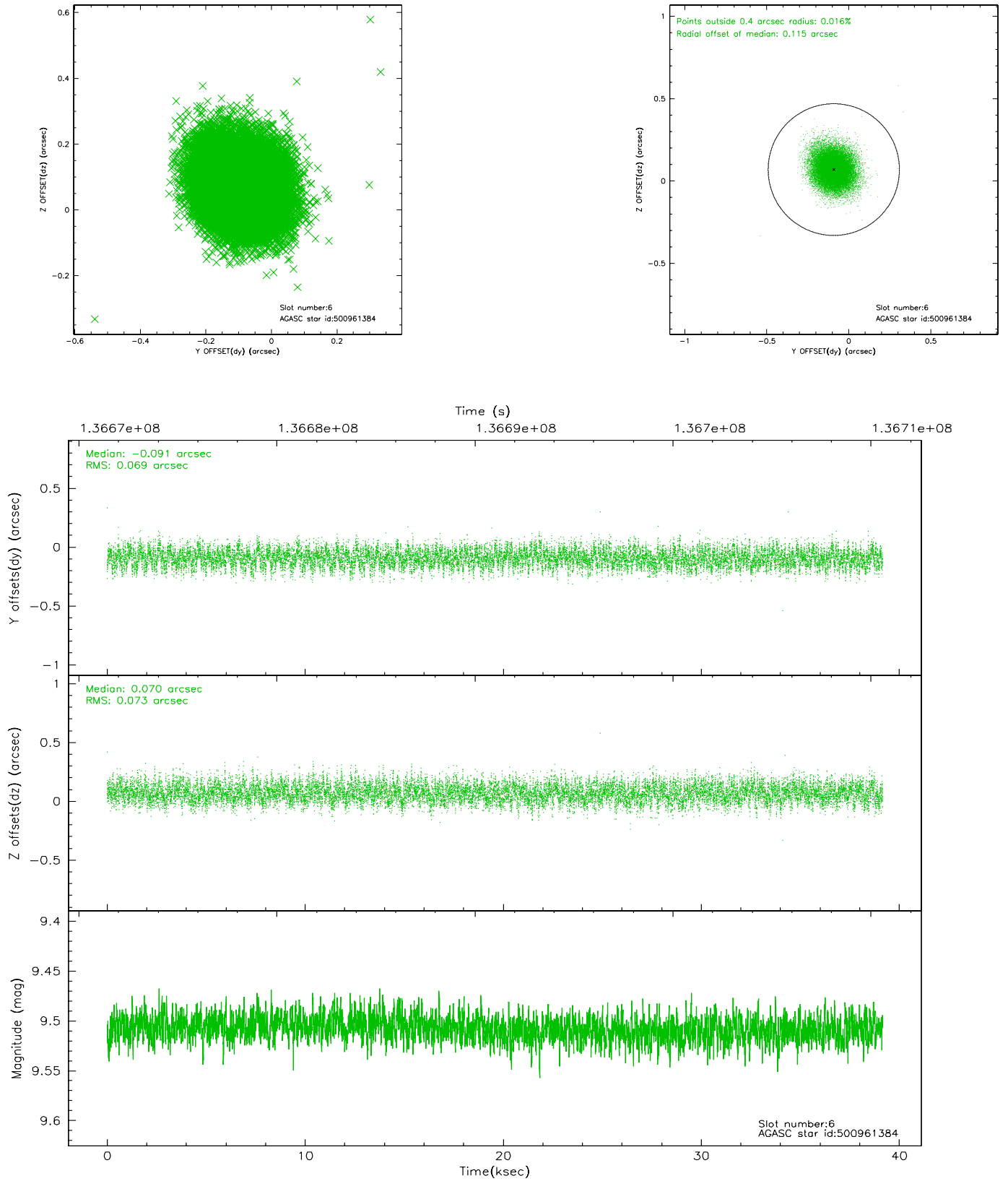
2.4.2 Slot 4



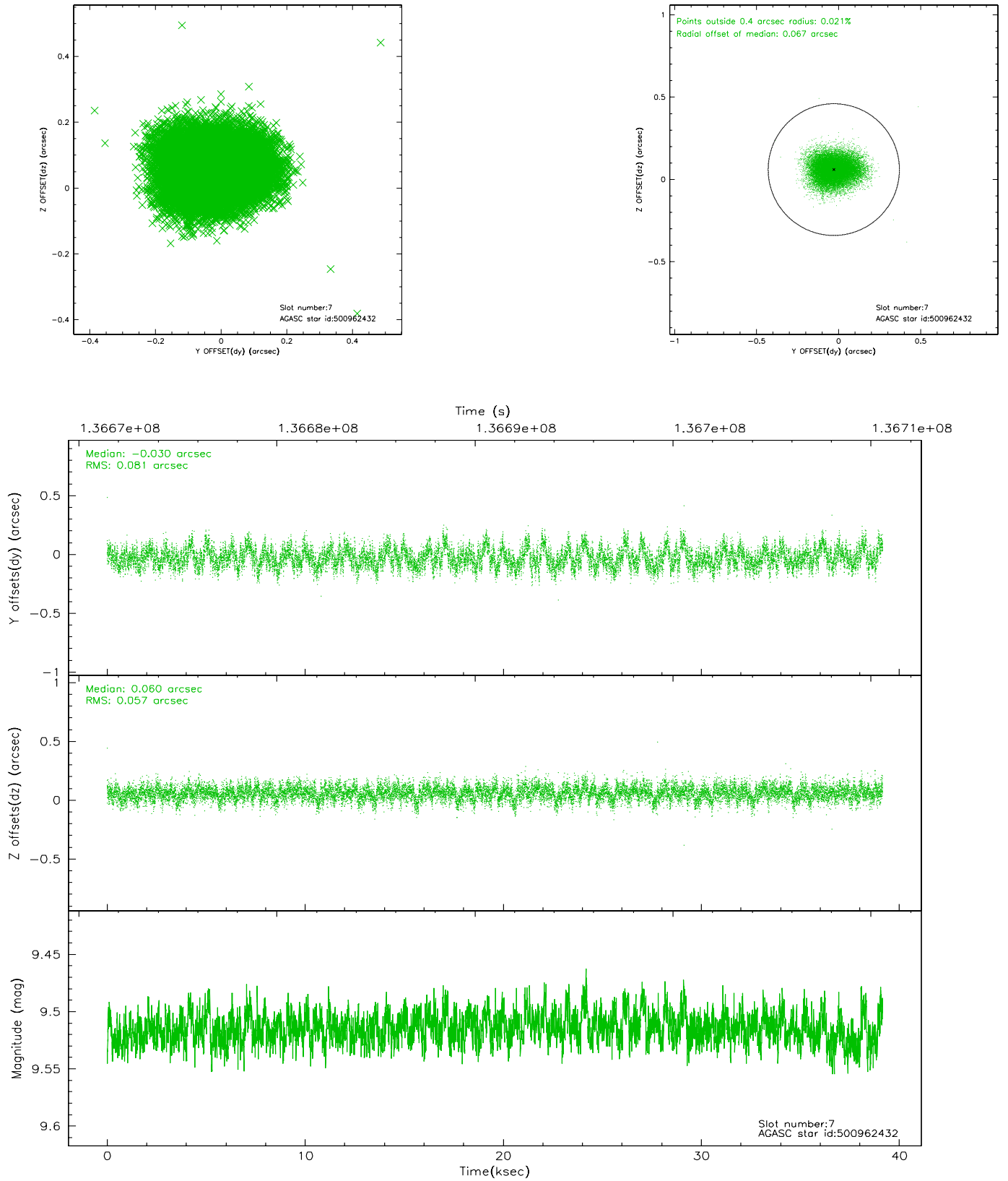
2.4.3 Slot 5



2.4.4 Slot 6

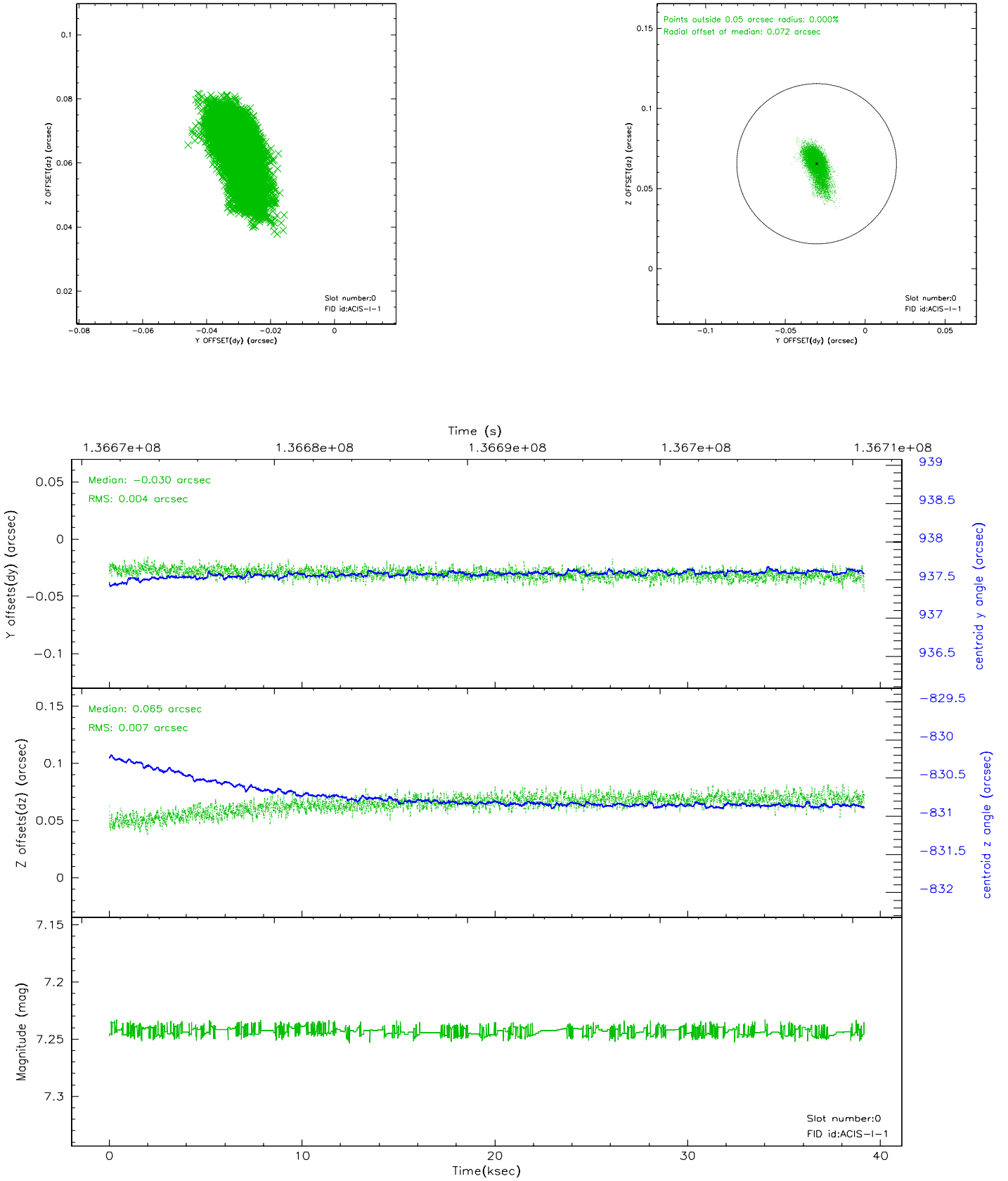


2.4.5 Slot 7

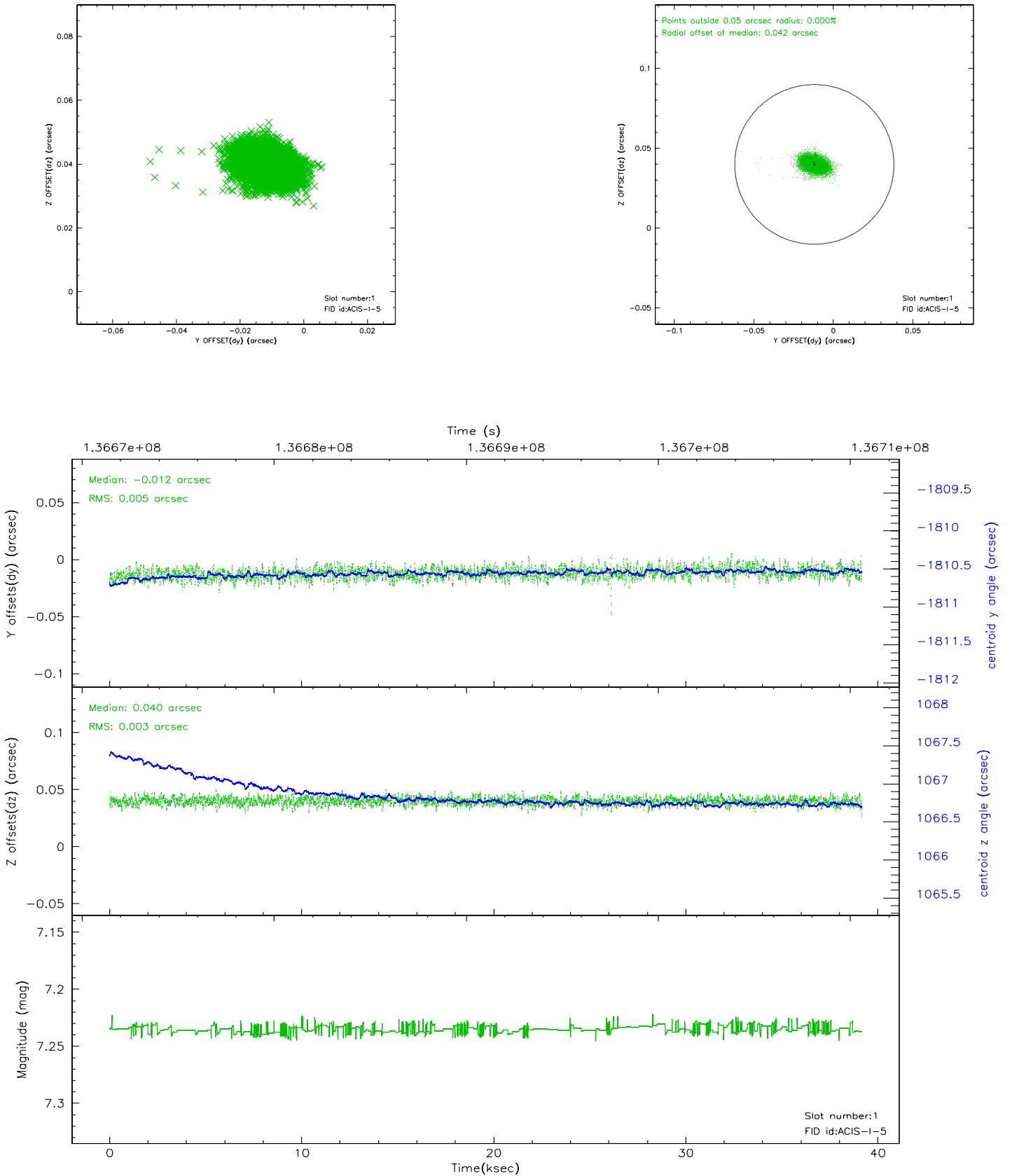


2.5 FID Slots

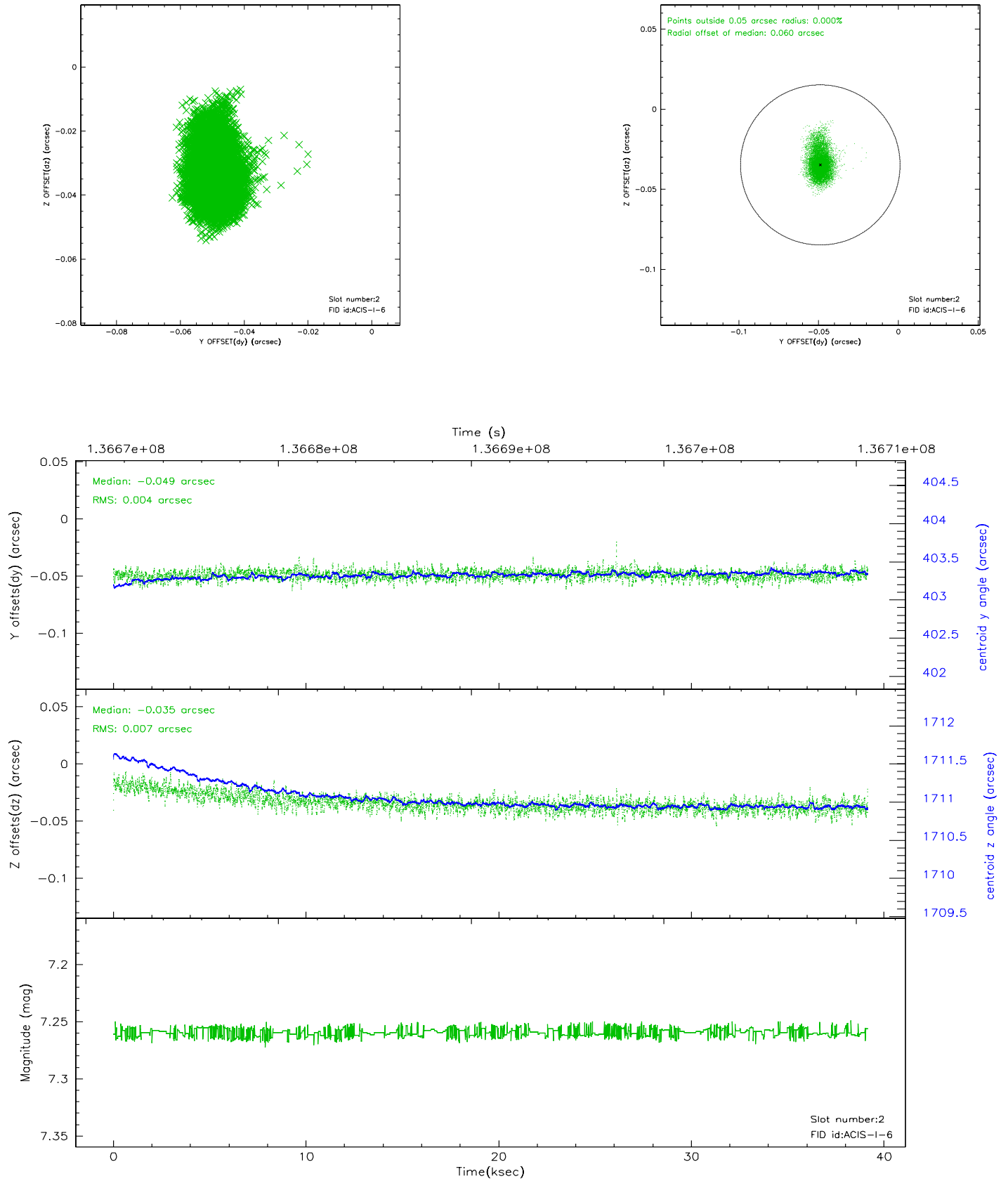
2.5.1 Slot 0



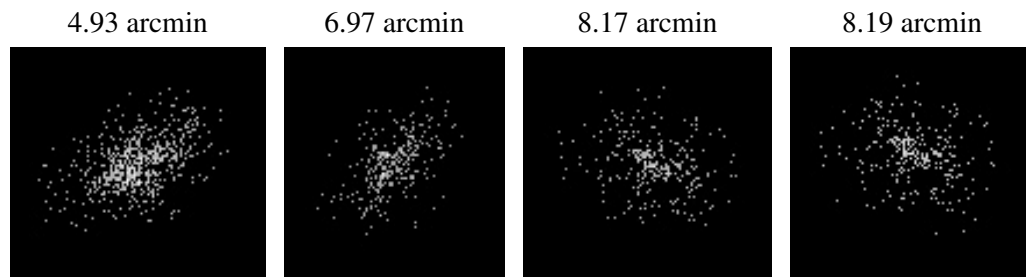
2.5.2 Slot 1



2.5.3 Slot 2



3 Point Sources



A Summary

A.1 Status

V&V Scientist	Jen Lauer
V&V Date (YYYY-MM-DD)	2006.09.18
V&V Edition	1
V&V Disposition and Status	OK
V&V Charge Time	39.036

A.2 Comments