

V&V Reference Report

L2 ASCDS Version : 7.6.9

Observation 3341 - L2 Version 001
Chandra X-Ray Center

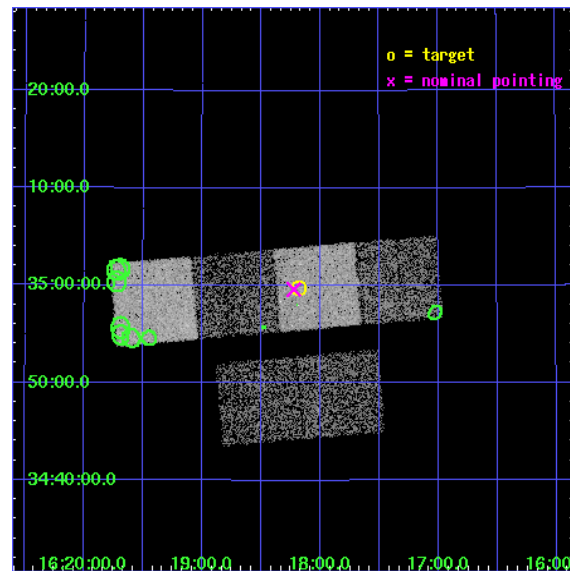
L2 Processing Date : Oct 13 2006

Contents

1	Front	2
2	OBI	3
2.1	OBI	3
2.1.1	Images	3
2.1.2	Bias	3
2.1.3	Parameters	4
2.1.4	Events	4
2.2	Compared Parameters	5
2.3	Aspect	6
2.4	Star Slots	9
2.4.1	Slot 3	9
2.4.2	Slot 4	10
2.4.3	Slot 5	11
2.4.4	Slot 6	12
2.4.5	Slot 7	13
2.5	FID Slots	14
2.5.1	Slot 0	14
2.5.2	Slot 1	15
2.5.3	Slot 2	16
3	Point Sources	17
A	Summary	18
A.1	Status	18
A.2	Comments	18

1 Front

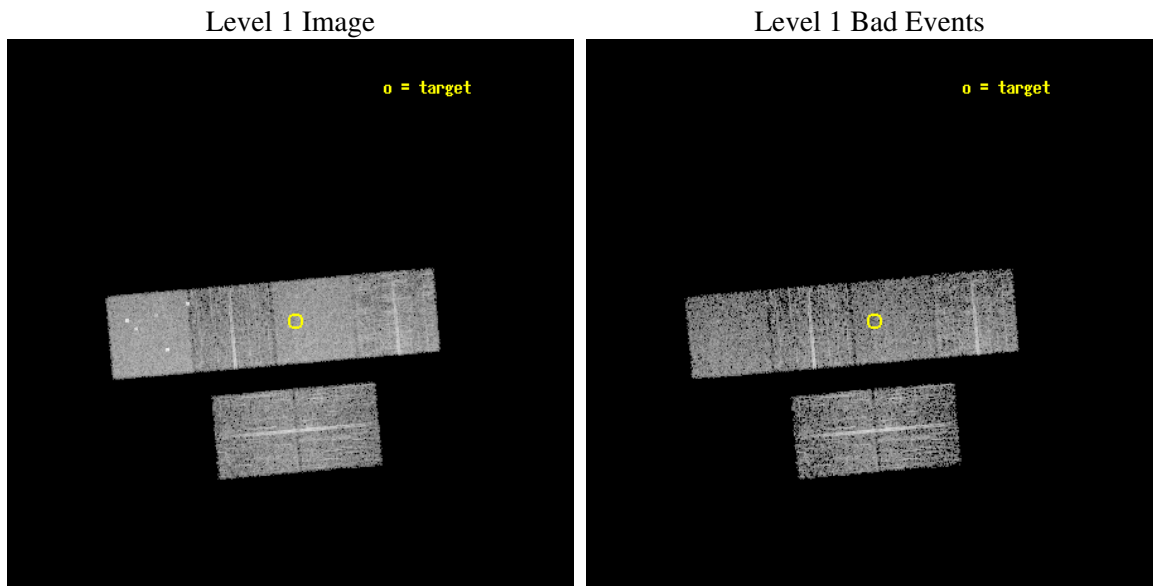
seq_num	900180
obs_id	3341
title	THE SHEEP SURVEY: WHAT KIND OF OBJECTS MAKE THE X-RAY BACKGROUND?
observer	Professor Kirpal Nandra
object	AX J1618.1+3459
dtcycle	0
cycle	P
ra_targ	244.544583
dec_targ	34.996111
ra_nom	244.55591829816
dec_nom	34.99354773769
roll_nom	355.04887301133
revision	2
ontime	4931.1999816298
livetime	4868.7581582503
ontime2	4931.1999816298
ontime3	4931.1999816298
ontime5	4931.1999816298
ontime6	4931.1999816298
ontime7	4931.1999816298
ontime8	4931.1999816298
l2events	48839



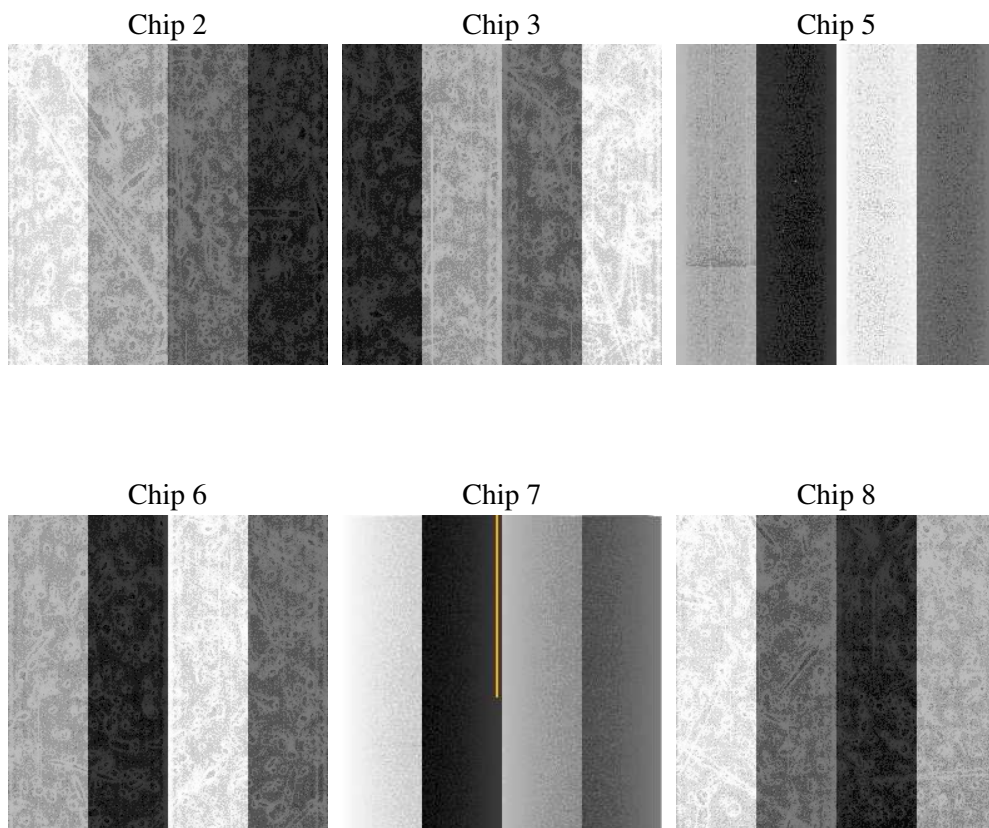
2 OBI

2.1 OBI

2.1.1 Images



2.1.2 Bias



2.1.3 Parameters

obi_num	0
ascdsver	7.6.9
caldsver	3.2.3
date	2006-10-13T11:18:14
revision	2

sched_exp_time	5000.000000
ontime	4936.0432157218
ontime2	4936.0432157218
ontime3	4936.0432157218
ontime5	4936.0432157218
ontime6	4936.0432157218
ontime7	4936.0432157218
ontime8	4936.0432157218
l1events	219355

2.1.4 Events

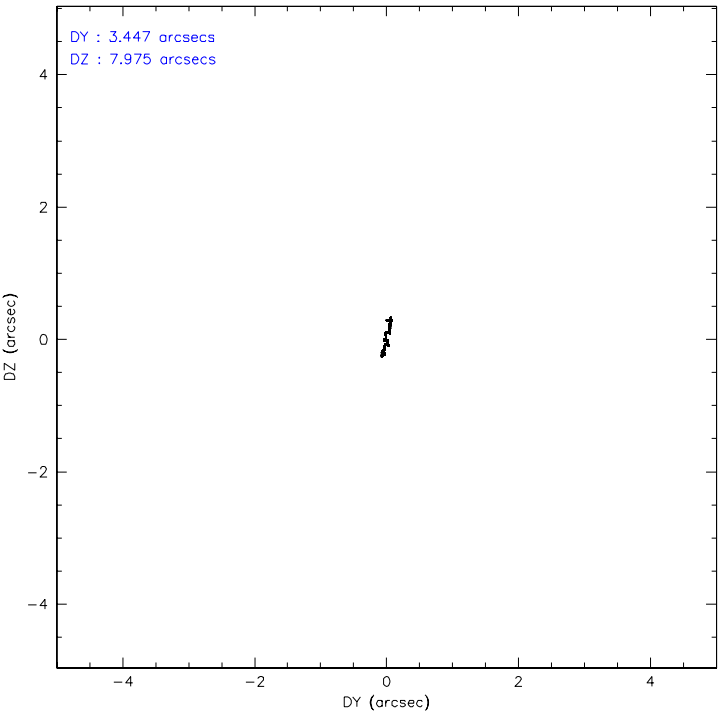
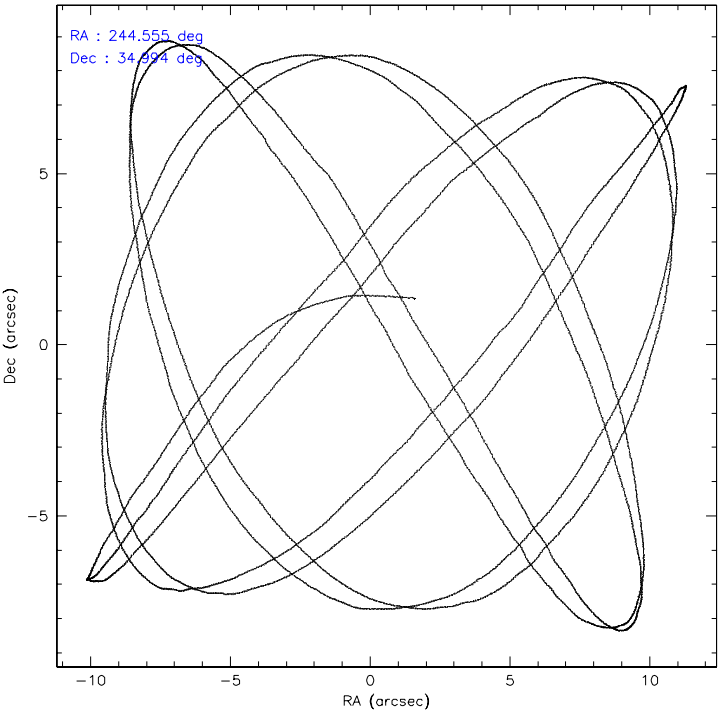
	ccd 2	ccd 3	ccd 5	ccd 6	ccd 7	ccd 8
level 1 events	31752	30614	45757	31275	41595	38362
rejected events	27994	26989	24777	27492	25119	29458
rejected %	88%	88%	54%	87%	60%	76%

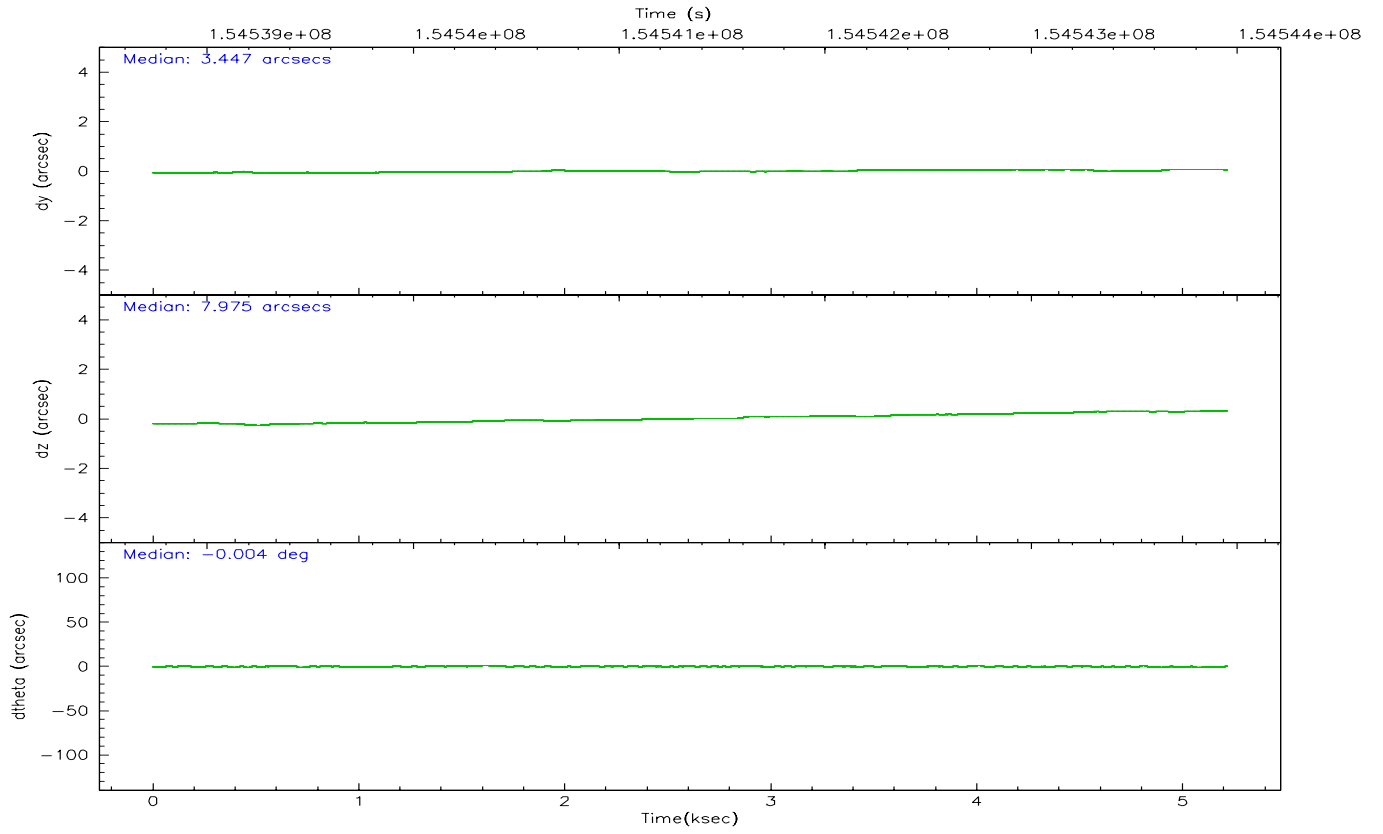
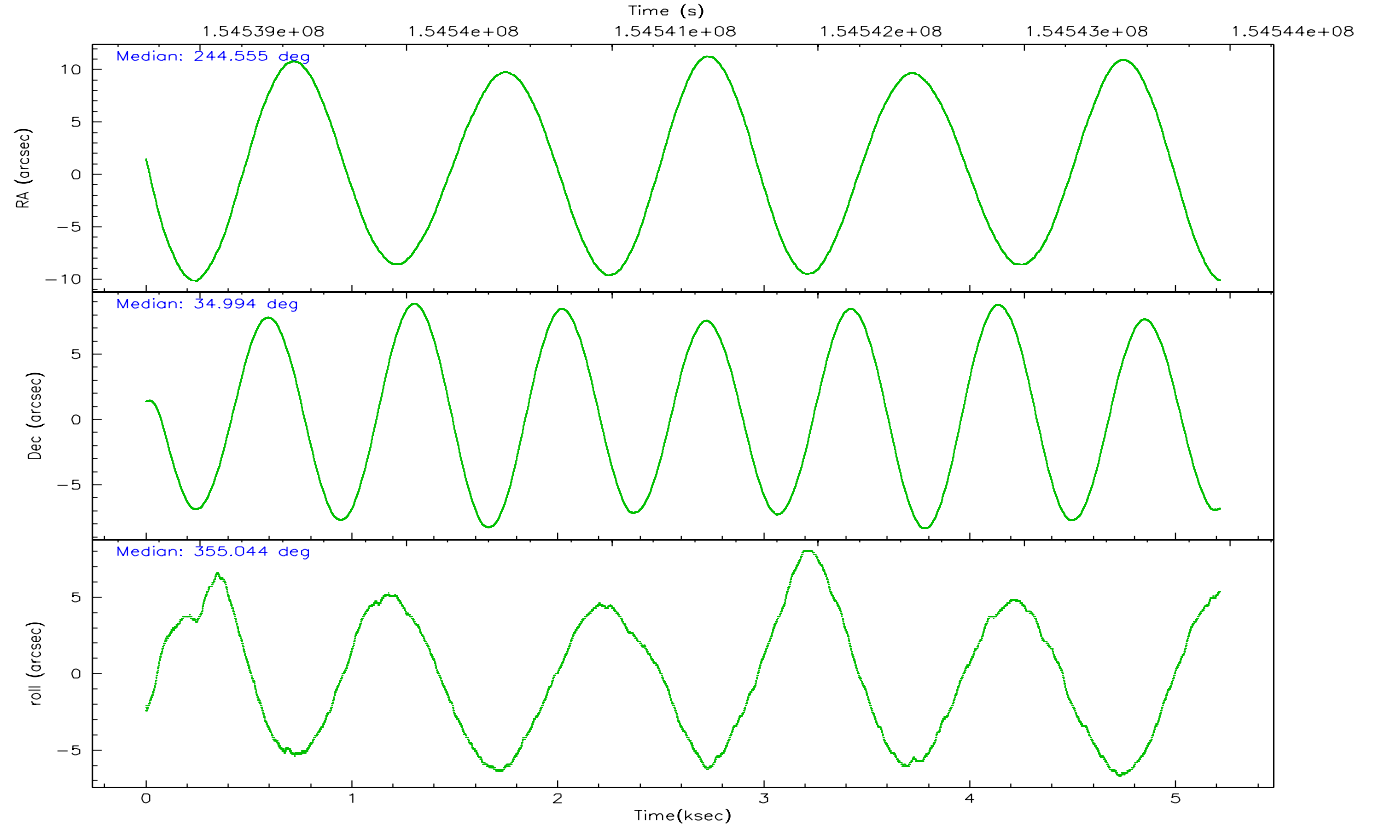
	ccd 2	ccd 3	ccd 5	ccd 6	ccd 7	ccd 8
grade 0 events	1665	1725	2610	1616	1225	3232
	5%	5%	5%	5%	2%	8%
grade 1 events	15	24	93	18	23	30
	0%	0%	0%	0%	0%	0%
grade 2 events	737	642	6107	763	4098	1750
	2%	2%	13%	2%	9%	4%
grade 3 events	381	344	506	341	893	920
	1%	1%	1%	1%	2%	2%
grade 4 events	370	334	454	365	896	846
	1%	1%	0%	1%	2%	2%
grade 5 events	1192	1316	2159	1356	2689	1773
	3%	4%	4%	4%	6%	4%
grade 6 events	606	584	11331	702	9392	2168
	1%	1%	24%	2%	22%	5%
grade 7 events	26786	25645	22497	26114	22379	27643
	84%	83%	49%	83%	53%	72%

2.2 Compared Parameters

Parameter	Planned	Actual	Parameter	Planned	Actual
Instrument	ACIS	ACIS	Obspar format version number	6	6
Detector	ACIS-235678	ACIS-235678	Obspar file type	PREDICTED	ACTUAL
Grating	NONE	NONE	Obspar update status	NONE	UPDATED
Data mode	FAINT	FAINT	Number of optional ACIS chips dropped	0	0
Observation mode	POINTING	POINTING	On-chip summing requested	N	N
Pointing RA	244.526067	244.5559182981572	Subarray requested	NONE	NONE
Pointing Dec	34.981737	34.99354773769004	Alternating exposures requested	N	N
Pointing Roll	354.909373	355.0488730113342	Primary exposure time	0.000000	3.2
SIM focus pos (mm)	-0.684267	-0.6828225247311905			
SIM defocus (mm)	0	0.001444936568705701			
SIM translation stage pos (mm)	-190.132523	-190.1425803651734			
SIM translation stage offset (mm)	0	0.01005778216563158			
Observation start time	154538952.184000	154537974.93257			
Observation start date	2002-11-24T15:28:08	2002-11-24T15:12:54			
Observation end time	154543952.184000	154544365.29534			
Observation end date	2002-11-24T16:51:28	2002-11-24T16:59:25			
Read mode	TIMED	TIMED			

2.3 Aspect



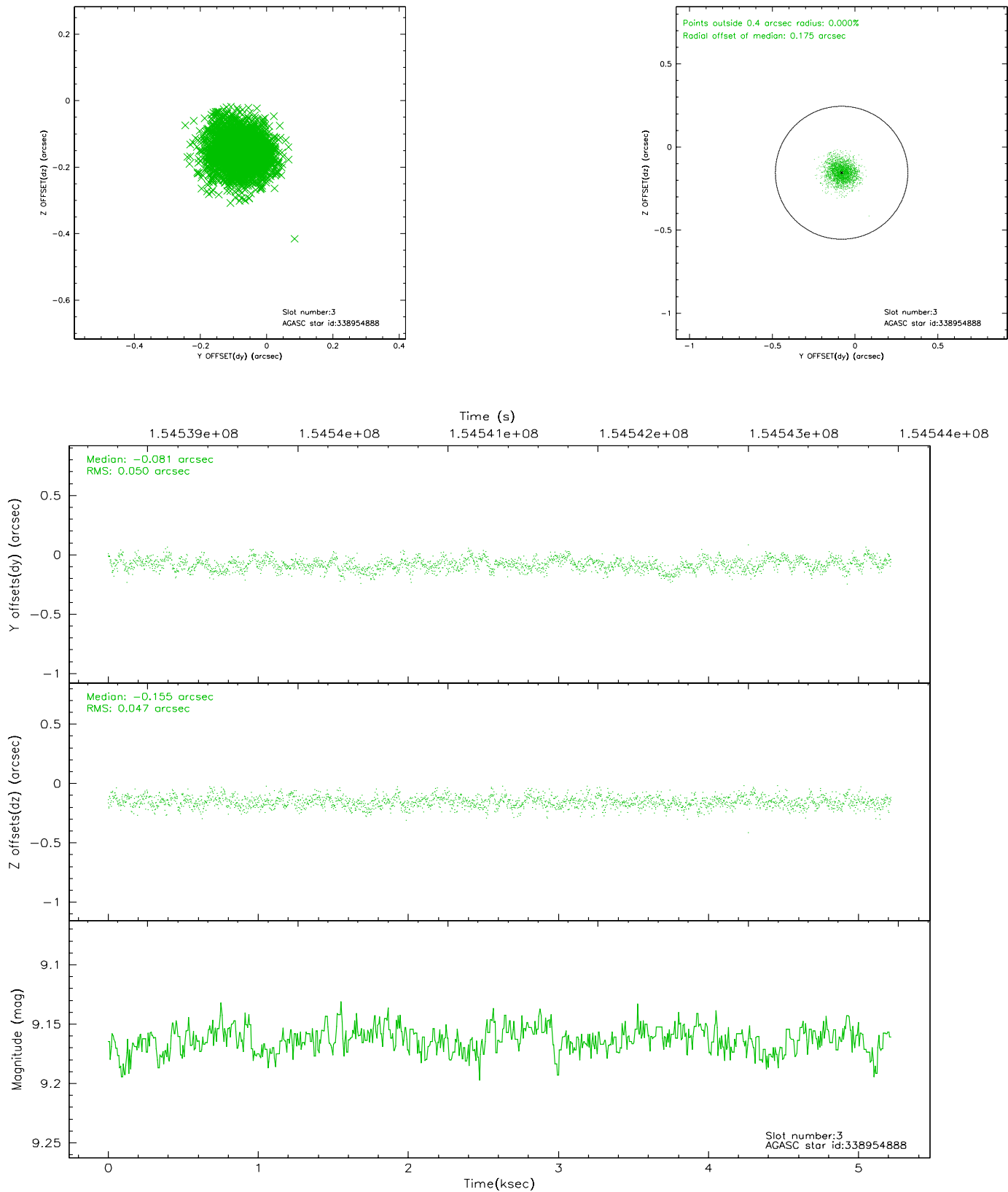


Slot Statistics

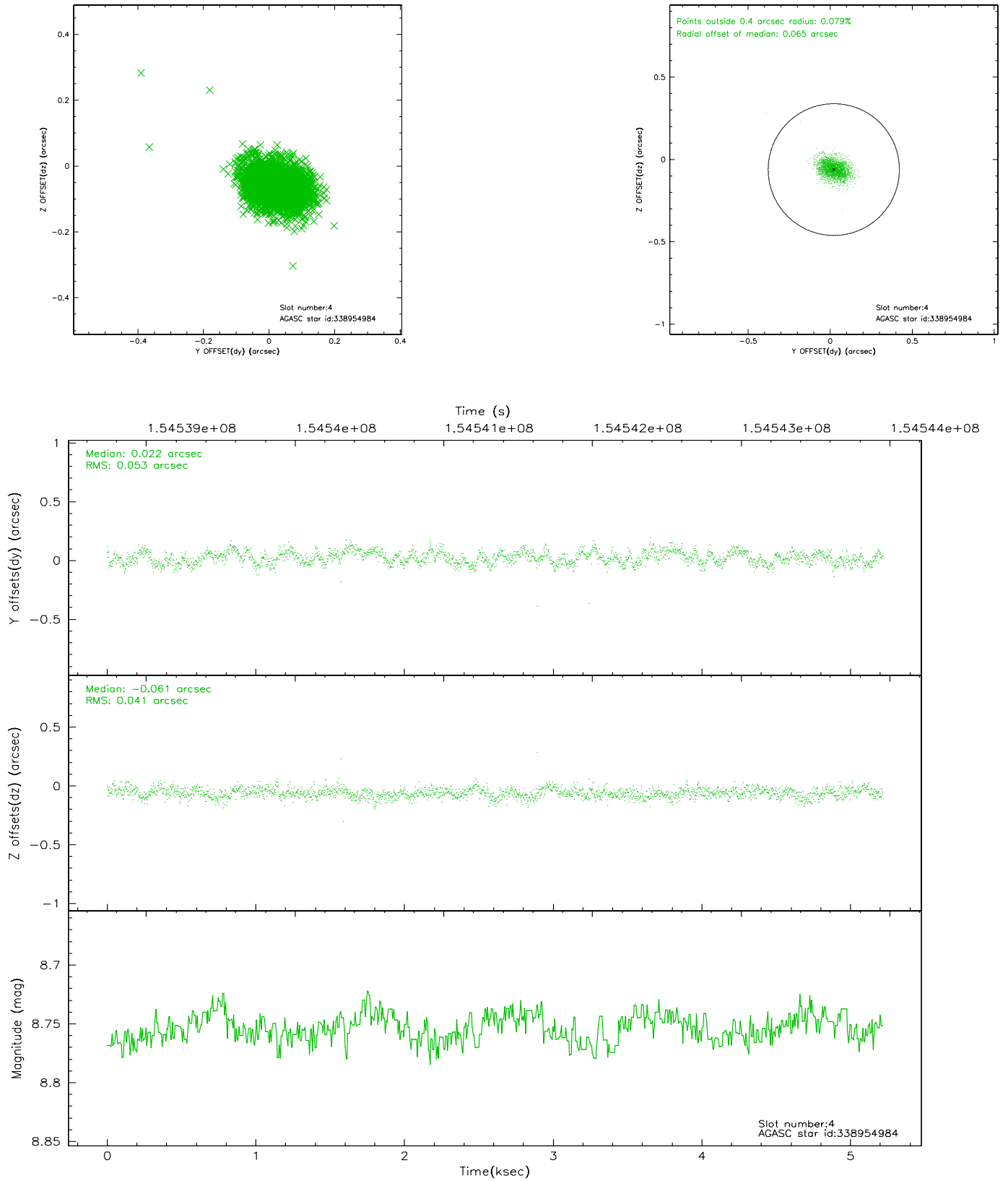
slot	status	id	mag	n_pts	med_dy	med_dz	dr1	dr2	ra	dec	mean_y	mean_z
0	FID	ACIS-S-2	7.11	1273	0.014	0.029	0.007	0.013	0.000000	0.000000	-756.10	-1729.11
1	FID	ACIS-S-4	7.20	1273	-0.057	-0.014	0.006	0.011	0.000000	0.000000	2156.60	178.11
2	FID	ACIS-S-5	7.24	1273	0.012	-0.006	0.007	0.012	0.000000	0.000000	-1807.44	173.14
3	GUIDE	338954888	9.16	2544	-0.081	-0.155	0.074	0.118	244.962818	35.513386	1105.78	2022.75
4	GUIDE	338954984	8.75	2545	0.022	-0.061	0.069	0.112	243.868741	35.485553	-2079.29	1642.53
5	GUIDE	338576432	8.79	2544	-0.013	0.015	0.081	0.128	243.692839	34.516402	-2313.59	-1877.19
6	GUIDE	338566360	9.69	2545	0.051	0.158	0.102	0.165	243.866393	34.463228	-1784.69	-2027.40
7	GUIDE	338566056	9.46	2544	0.024	0.044	0.090	0.147	245.242665	34.367391	2317.44	-2007.02

2.4 Star Slots

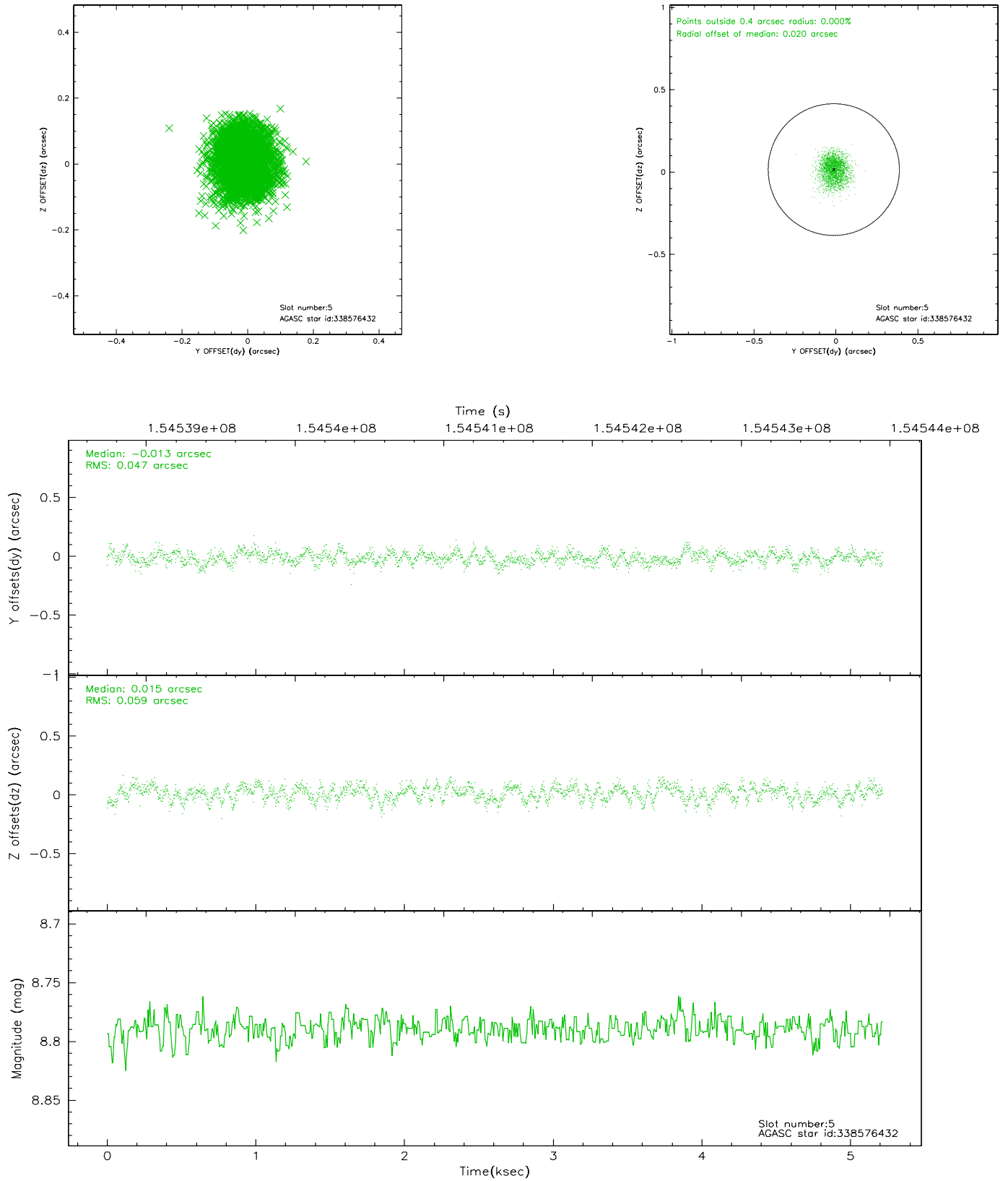
2.4.1 Slot 3



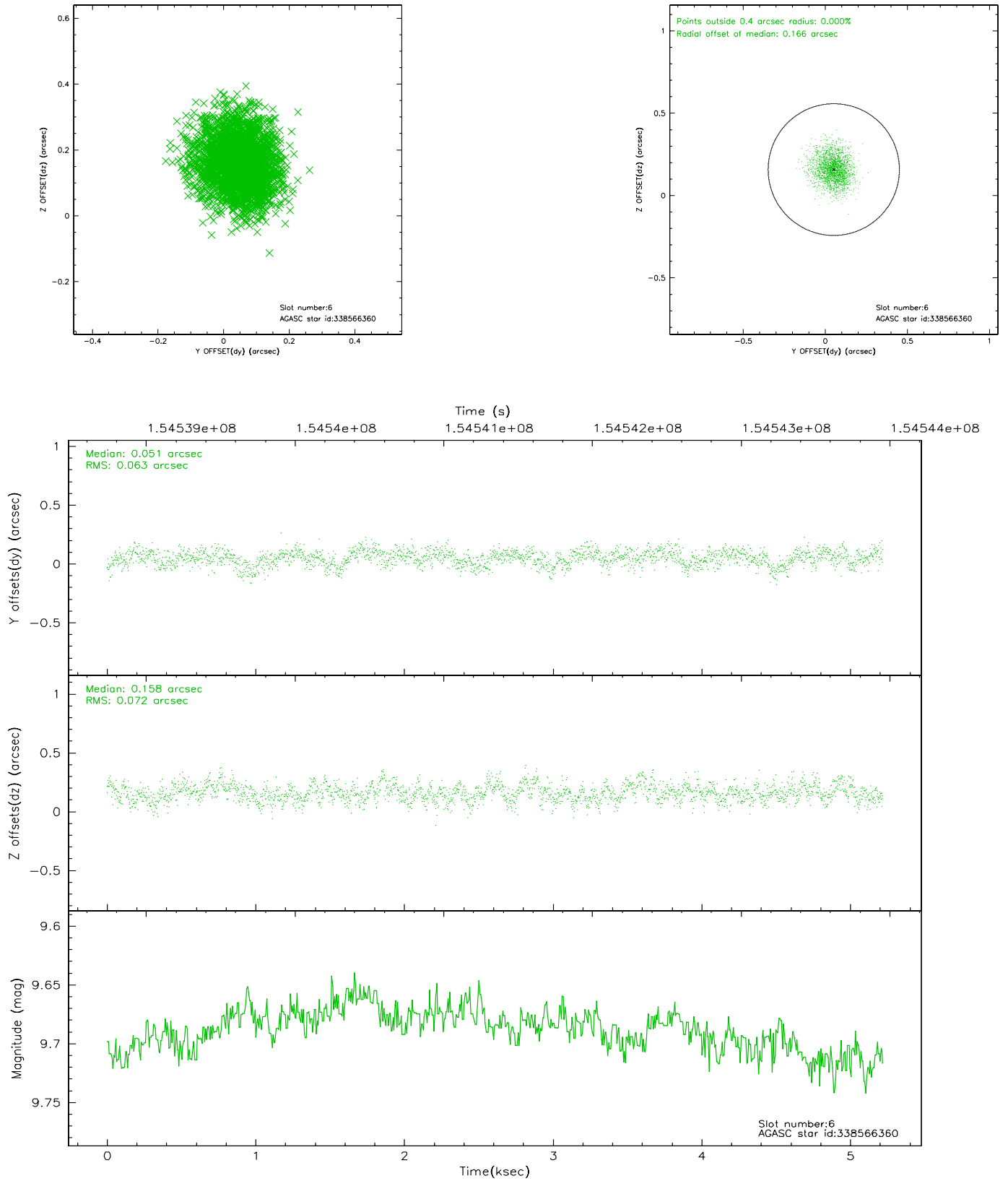
2.4.2 Slot 4



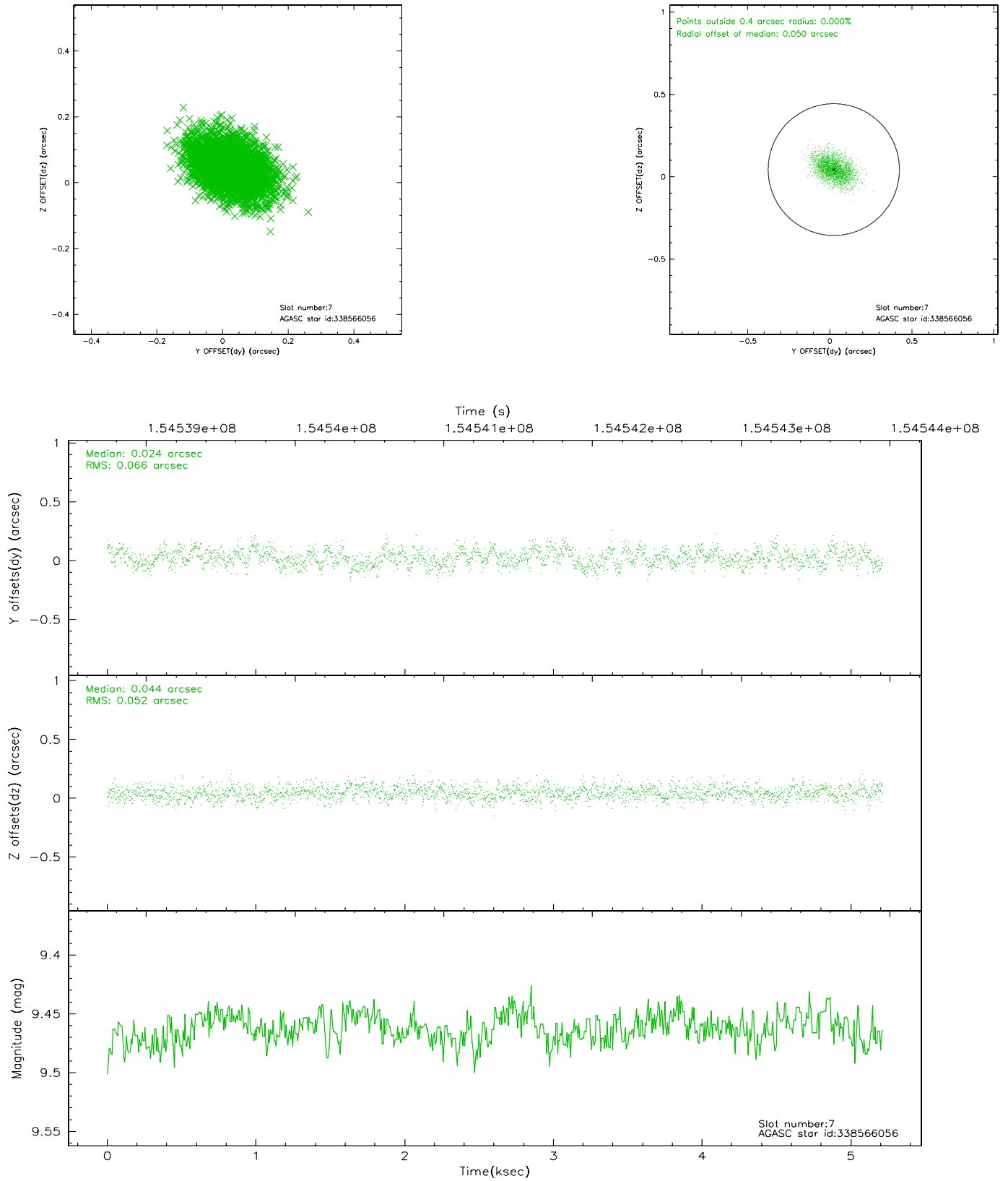
2.4.3 Slot 5



2.4.4 Slot 6

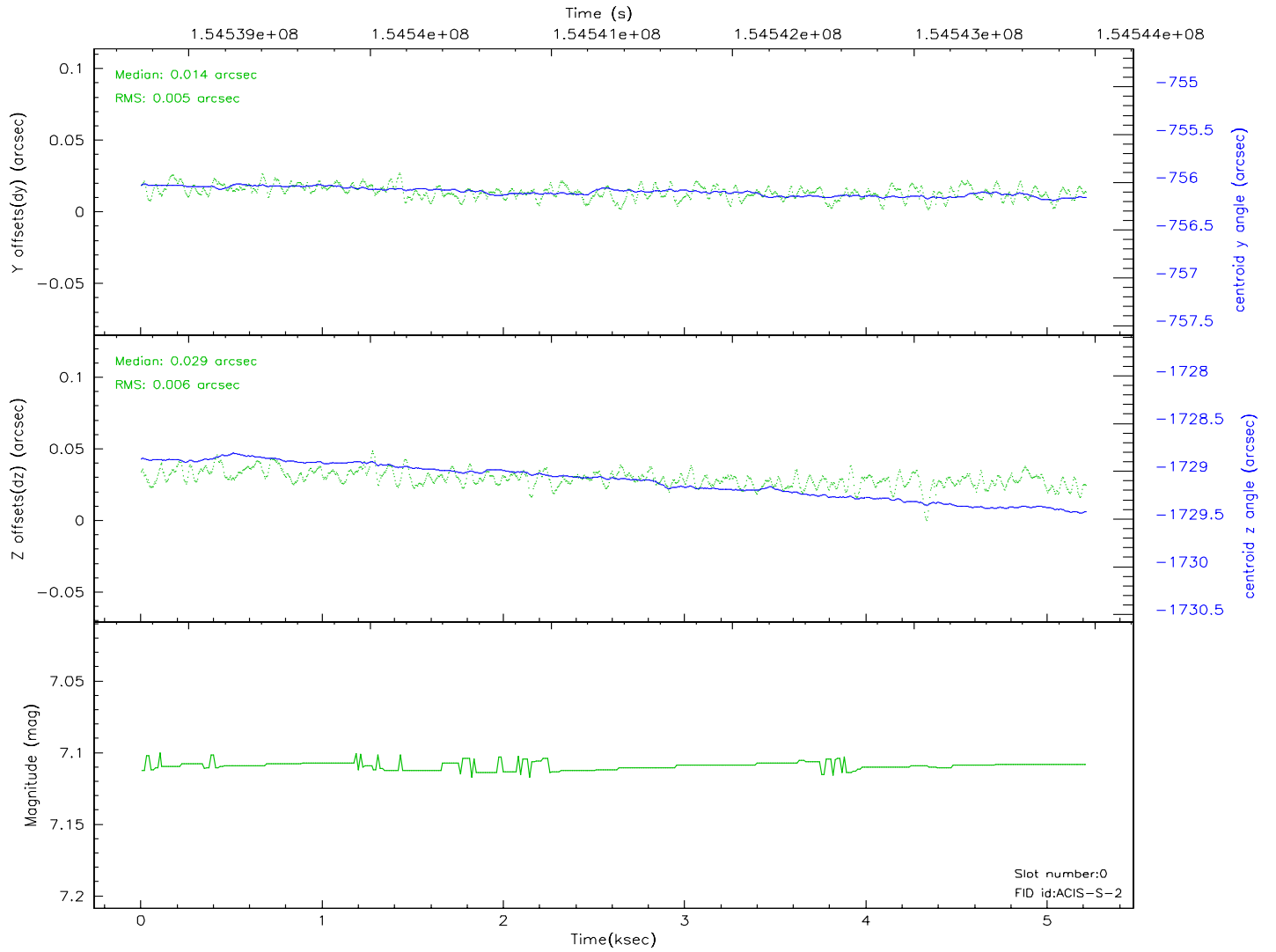
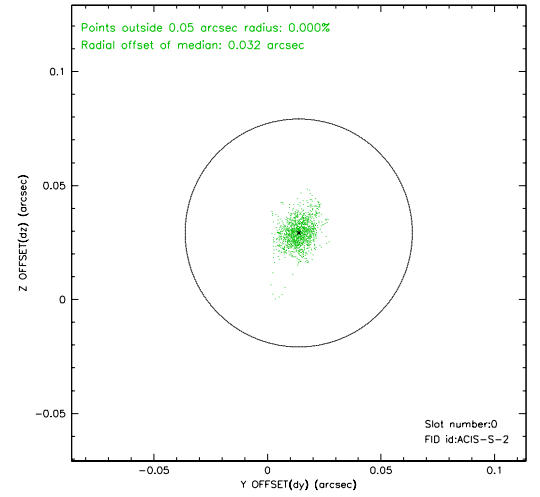
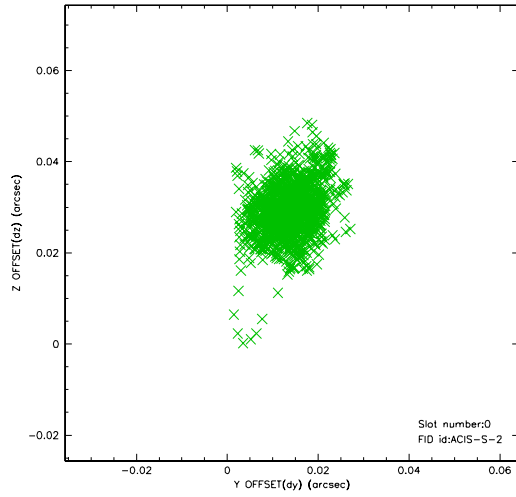


2.4.5 Slot 7

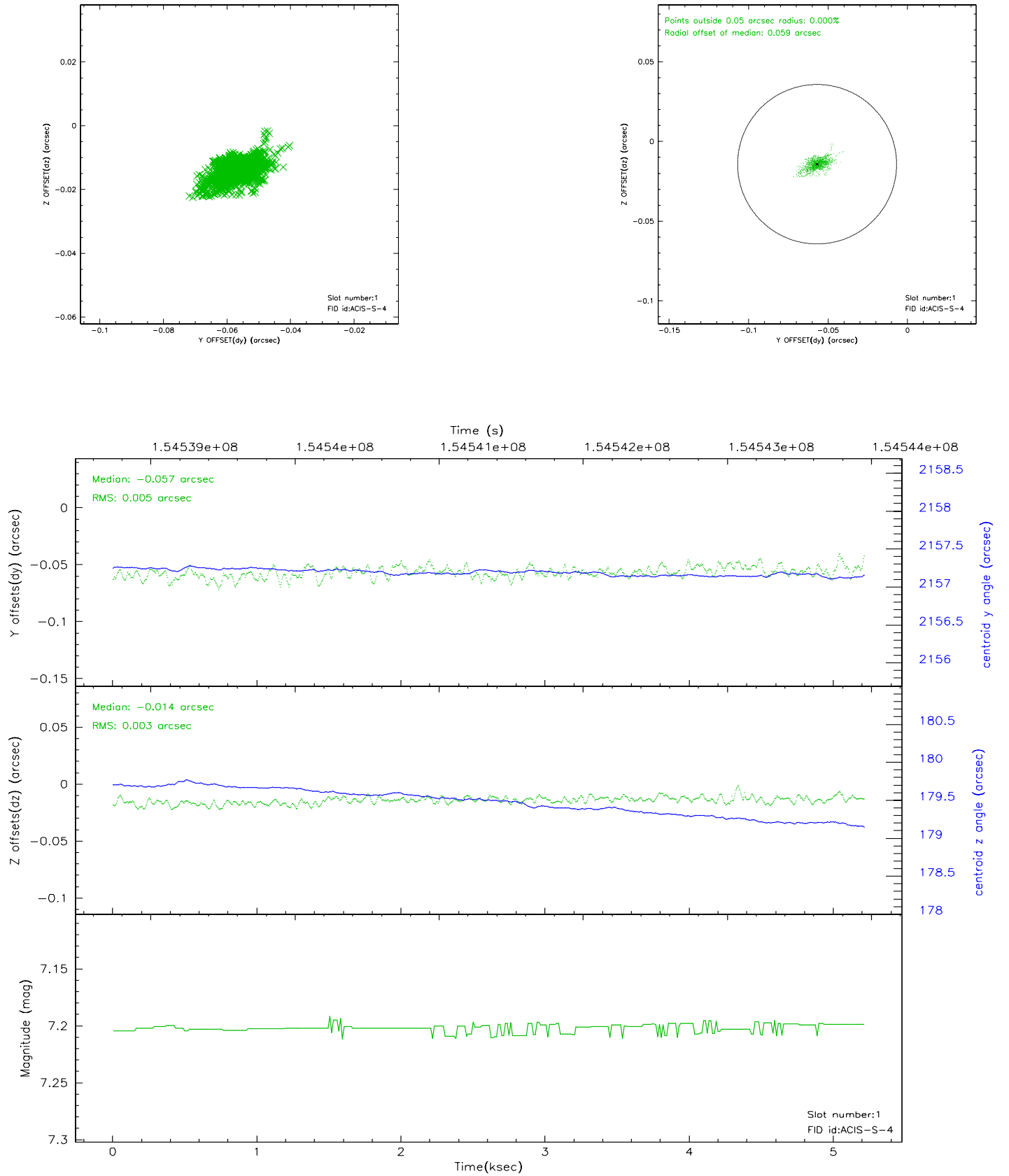


2.5 FID Slots

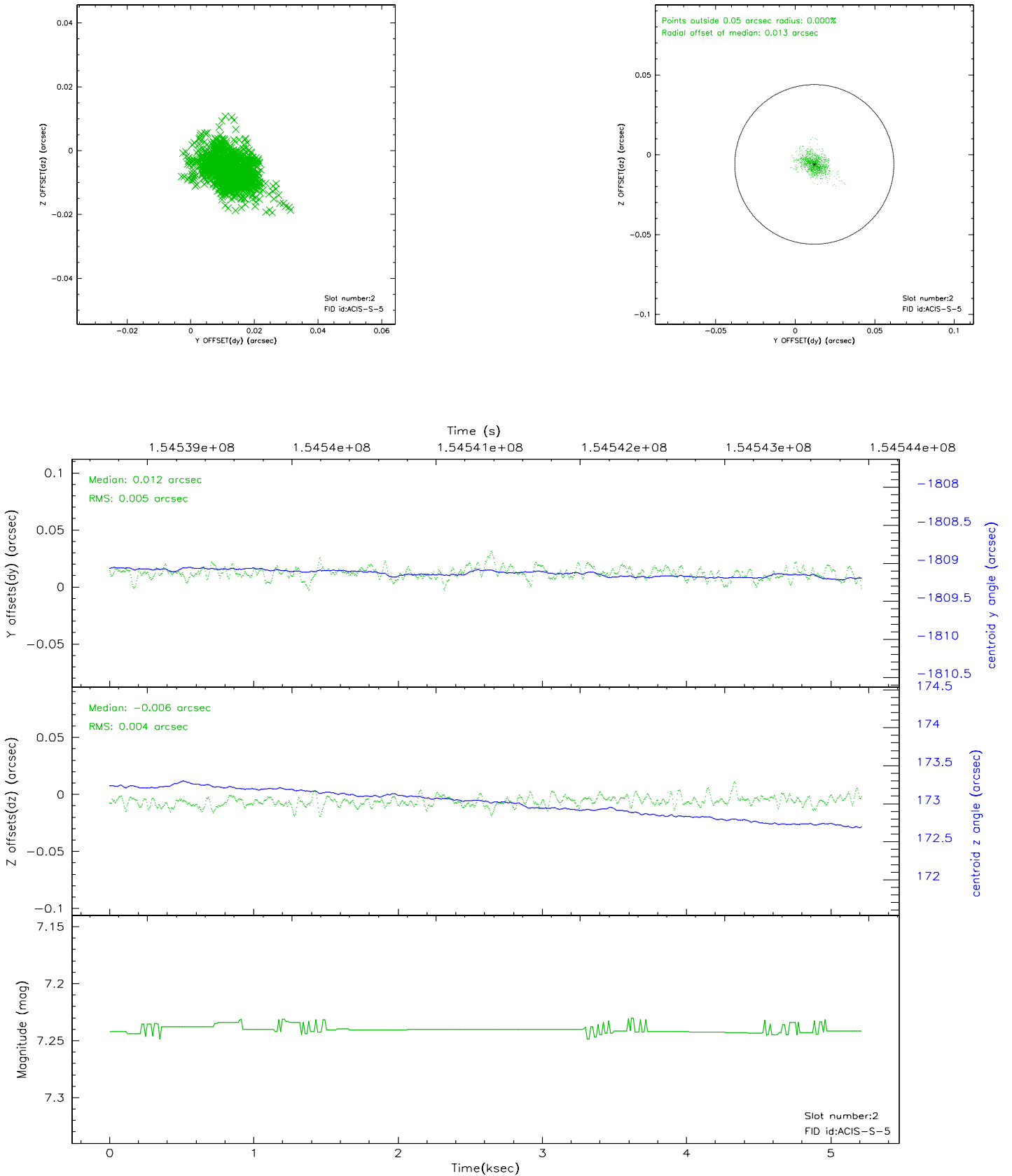
2.5.1 Slot 0



2.5.2 Slot 1



2.5.3 Slot 2



3 Point Sources

3.73 arcmin



18.62 arcmin



A Summary

A.1 Status

V&V Scientist	Beth Sundheim
V&V Date (YYYY-MM-DD)	2006.10.13
V&V Edition	1
V&V Disposition and Status	OK
V&V Charge Time	4.934

A.2 Comments