

V&V Reference Report

L2 ASCDS Version : 7.6.9

Observation 3338 - L2 Version 001
Chandra X-Ray Center

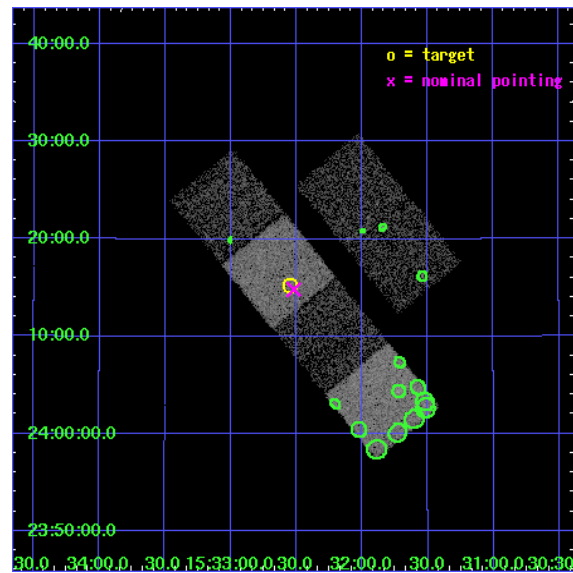
L2 Processing Date : Sep 21 2006

Contents

1	Front	2
2	OBI	3
2.1	OBI	3
2.1.1	Images	3
2.1.2	Bias	3
2.1.3	Parameters	4
2.1.4	Events	4
2.2	Compared Parameters	5
2.3	Aspect	6
2.4	Star Slots	9
2.4.1	Slot 3	9
2.4.2	Slot 4	10
2.4.3	Slot 5	11
2.4.4	Slot 6	12
2.4.5	Slot 7	13
2.5	FID Slots	14
2.5.1	Slot 0	14
2.5.2	Slot 1	15
2.5.3	Slot 2	16
3	Point Sources	17
A	Summary	18
A.1	Status	18
A.2	Comments	18

1 Front

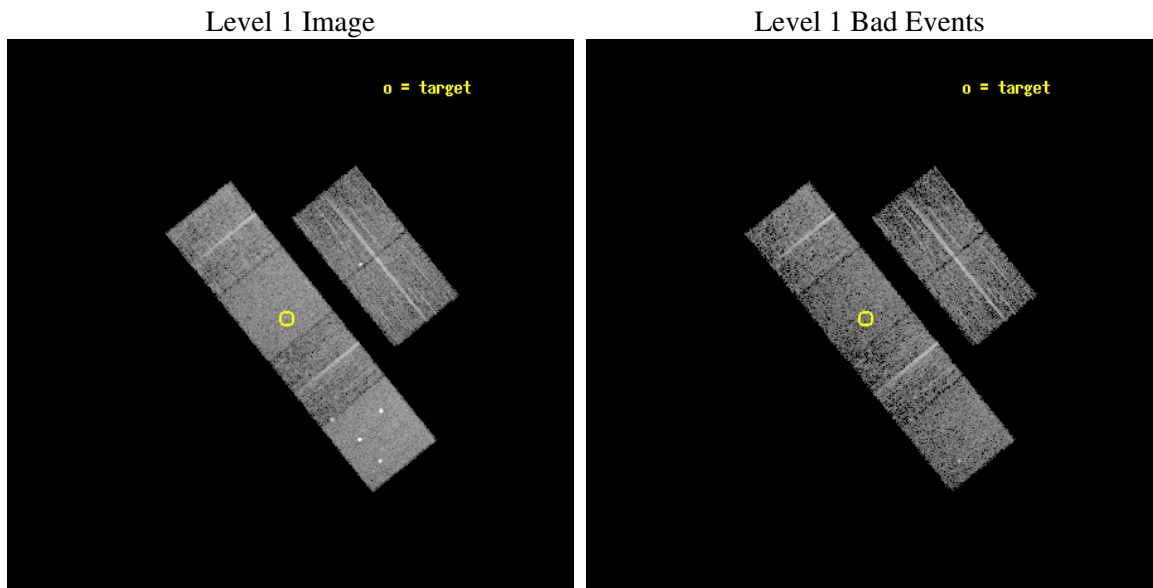
seq_num	900177
obs_id	3338
title	THE SHEEP SURVEY: WHAT KIND OF OBJECTS MAKE THE X-RAY BACKGROUND?
observer	Professor Kirpal Nandra
object	AX J1532.5+2415
dtcycle	0
cycle	P
ra_targ	233.137917
dec_targ	24.253611
ra_nom	233.1298167249
dec_nom	24.247194355806
roll_nom	231.03020716404
revision	3
ontime	4959.9999815226
livetime	4897.1934752031
ontime2	4959.9999815226
ontime3	4959.9999815226
ontime5	4959.9999815226
ontime6	4959.9999815226
ontime7	4959.9999815226
ontime8	4959.9999815226
l2events	50073



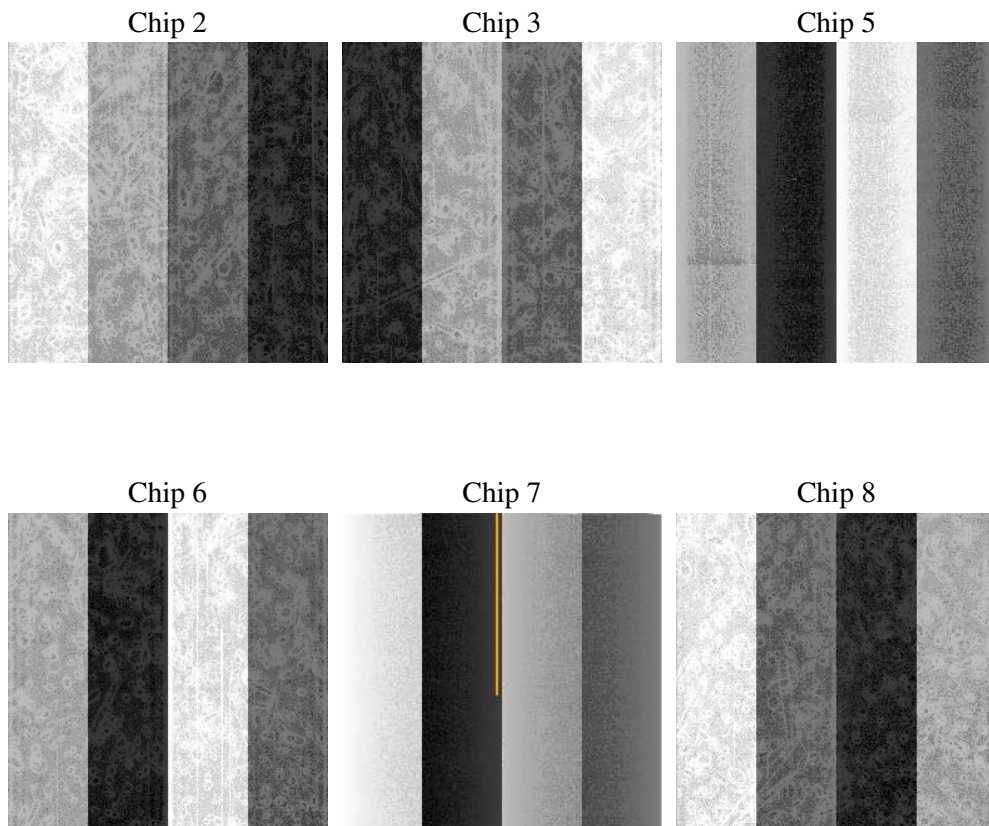
2 OBI

2.1 OBI

2.1.1 Images



2.1.2 Bias



2.1.3 Parameters

obi_num	0
ascdsver	7.6.9
caldbver	3.2.3
date	2006-09-21T07:47:53
revision	3

sched_exp_time	5000.000000
ontime	4965.2142437696
ontime2	4965.2142437696
ontime3	4965.2142437696
ontime5	4965.2142437696
ontime6	4965.2142437696
ontime7	4965.2142437696
ontime8	4965.2142437696
l1events	235942

2.1.4 Events

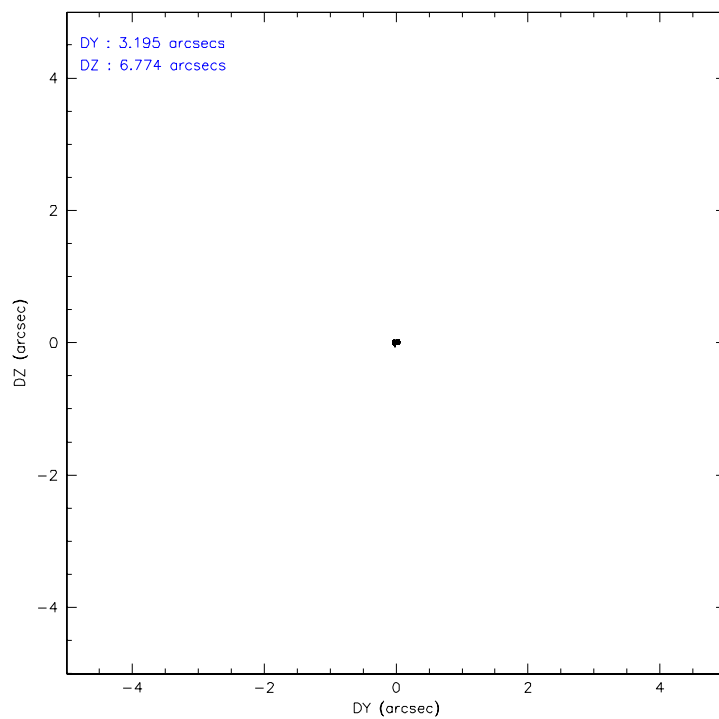
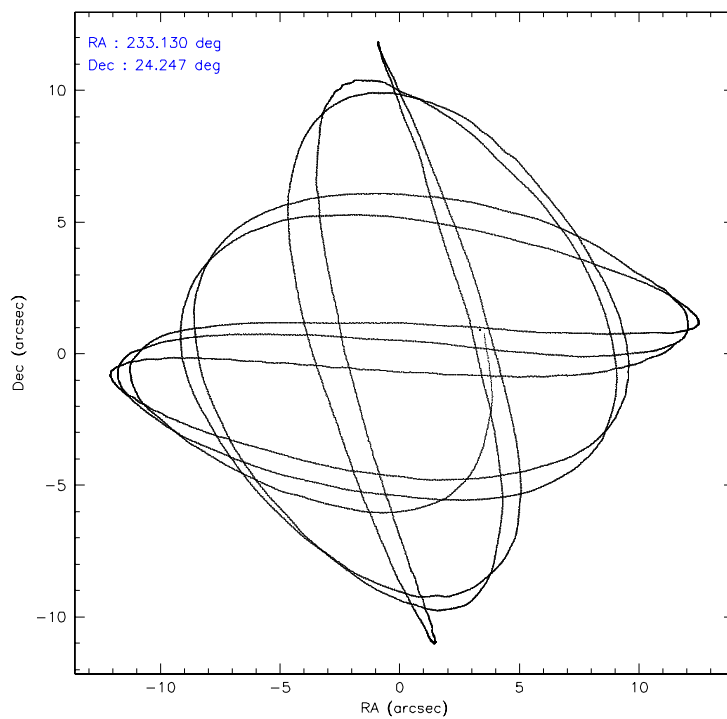
	ccd 2	ccd 3	ccd 5	ccd 6	ccd 7	ccd 8
level 1 events	33758	32471	50743	33355	43211	42404
rejected events	29893	28387	27164	29477	26748	34076
rejected %	88%	87%	53%	88%	61%	80%

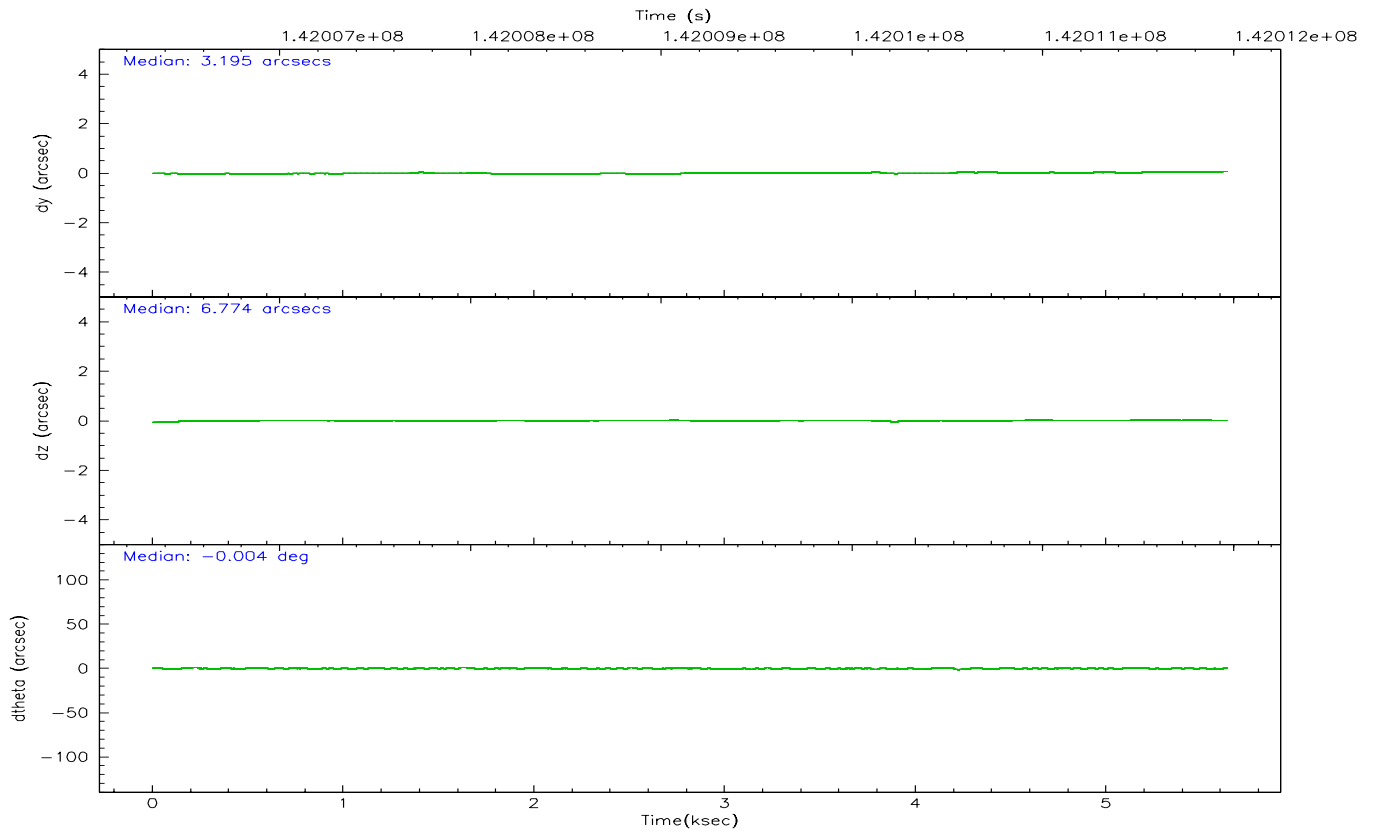
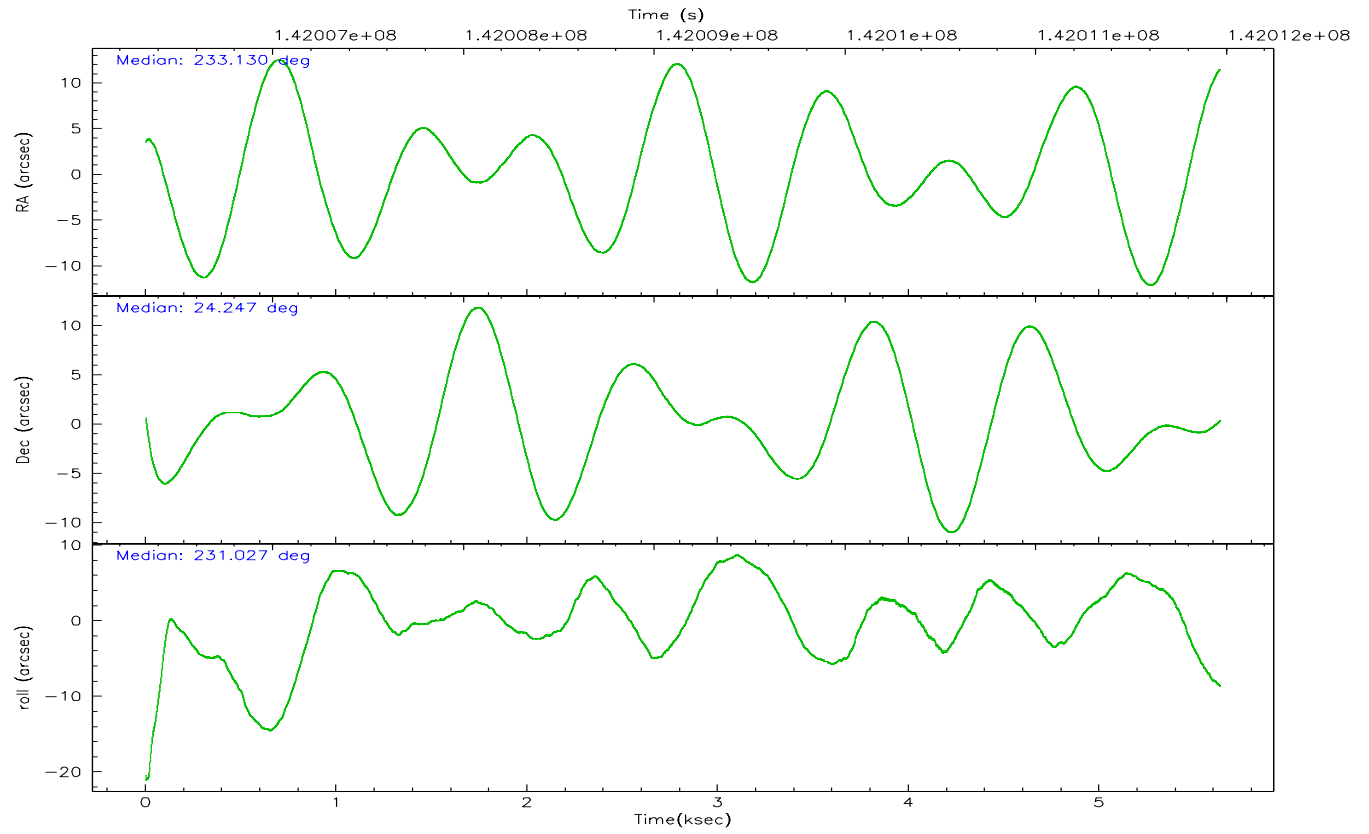
	ccd 2	ccd 3	ccd 5	ccd 6	ccd 7	ccd 8
grade 0 events	1700	1975	3790	1570	1017	2529
	5%	6%	7%	4%	2%	5%
grade 1 events	18	21	100	21	38	19
	0%	0%	0%	0%	0%	0%
grade 2 events	821	741	6714	791	4243	1866
	2%	2%	13%	2%	9%	4%
grade 3 events	357	321	526	386	805	812
	1%	0%	1%	1%	1%	1%
grade 4 events	354	373	480	373	796	830
	1%	1%	0%	1%	1%	1%
grade 5 events	1209	1252	2347	1435	2860	1781
	3%	3%	4%	4%	6%	4%
grade 6 events	638	683	12098	765	9628	2306
	1%	2%	23%	2%	22%	5%
grade 7 events	28661	27105	24688	28014	23824	32261
	84%	83%	48%	83%	55%	76%

2.2 Compared Parameters

Parameter	Planned	Actual	Parameter	Planned	Actual
Instrument	ACIS	ACIS	Obspar format version number	6	6
Detector	ACIS-235678	ACIS-235678	Obspar file type	PREDICTED	ACTUAL
Grating	NONE	NONE	Obspar update status	NONE	UPDATED
Data mode	FAINT	FAINT	Number of optional ACIS chips dropped	0	0
Observation mode	POINTING	POINTING	On-chip summing requested	N	N
Pointing RA	233.134167	233.129816724904	Subarray requested	NONE	NONE
Pointing Dec	24.274230	24.24719435580568	Alternating exposures requested	N	N
Pointing Roll	230.871801	231.0302071640435	Primary exposure time	0.000000	3.2
SIM focus pos (mm)	-0.684267	-0.6828225247311905			
SIM defocus (mm)	0	0.001444936568705701			
SIM translation stage pos (mm)	-190.132523	-190.1425803651734			
SIM translation stage offset (mm)	0	0.01005778216563158			
Observation start time	142006972.184000	142005785.26458			
Observation start date	2002-07-02T14:21:48	2002-07-02T14:03:05			
Observation end time	142011972.184000	142012616.37736			
Observation end date	2002-07-02T15:45:08	2002-07-02T15:56:56			
Read mode	TIMED	TIMED			

2.3 Aspect



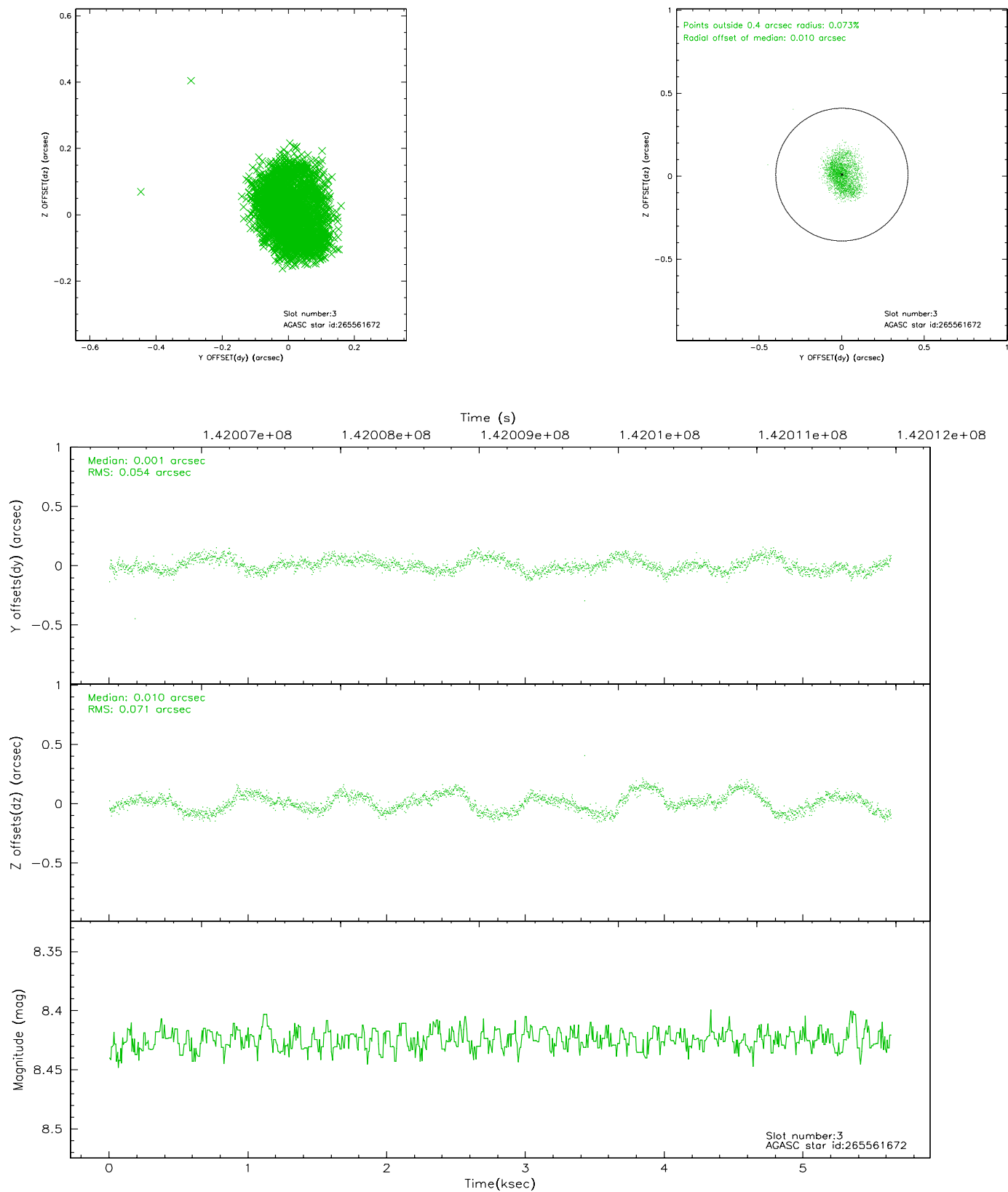


Slot Statistics

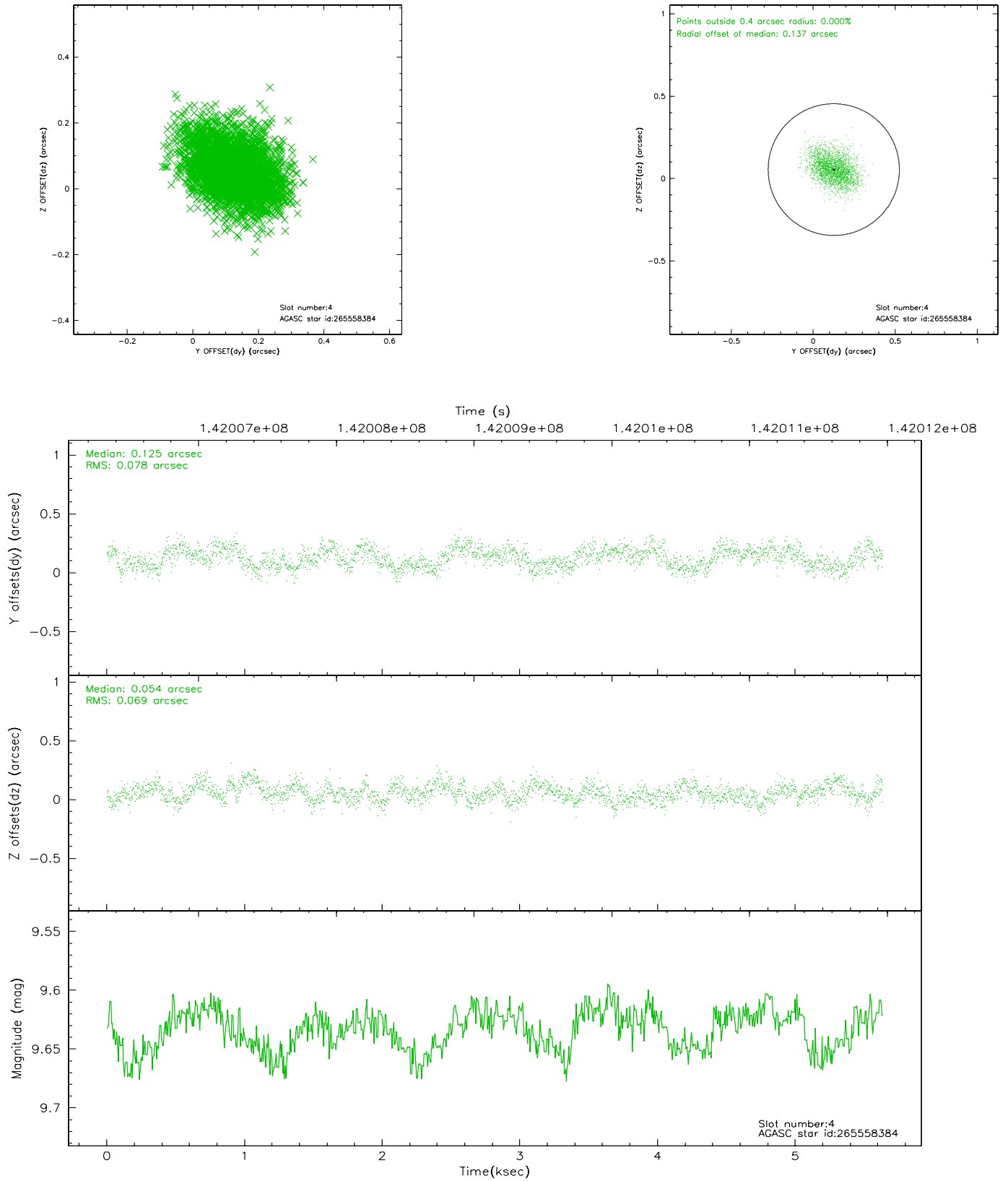
slot	status	id	mag	n_pts	med_dy	med_dz	dr1	dr2	ra	dec	mean_y	mean_z
0	FID	ACIS-S-2	7.12	1374	-0.011	0.028	0.007	0.011	0.000000	0.000000	-755.84	-1727.86
1	FID	ACIS-S-4	7.20	1374	-0.040	-0.002	0.005	0.009	0.000000	0.000000	2156.91	179.52
2	FID	ACIS-S-5	7.24	1375	0.021	-0.017	0.007	0.011	0.000000	0.000000	-1807.30	174.35
3	GUIDE	265561672	8.42	2749	0.001	0.010	0.099	0.147	233.051219	23.521427	2274.56	1498.70
4	GUIDE	265558384	9.63	2749	0.125	0.054	0.113	0.177	232.899731	24.051291	1108.94	-90.42
5	GUIDE	265559904	10.01	2749	0.042	0.106	0.301	0.417	233.501135	24.275645	-765.24	930.64
6	GUIDE	265556832	10.18	2749	-0.091	-0.167	0.154	0.248	232.771701	24.451376	252.94	-1323.98
7	GUIDE	265559712	9.91	2744	-0.089	0.009	0.160	0.265	233.996729	24.207250	-1607.57	2343.84

2.4 Star Slots

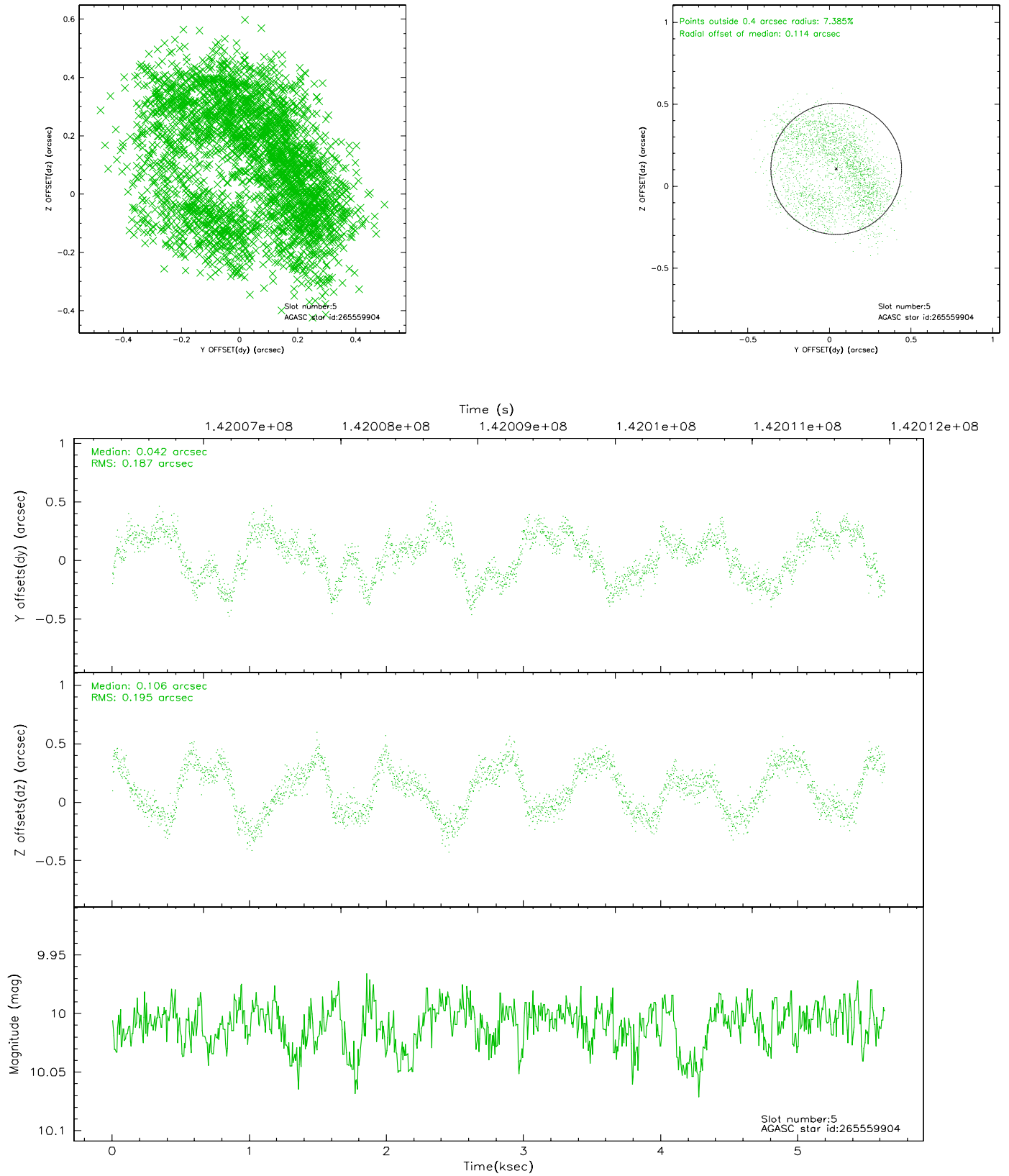
2.4.1 Slot 3



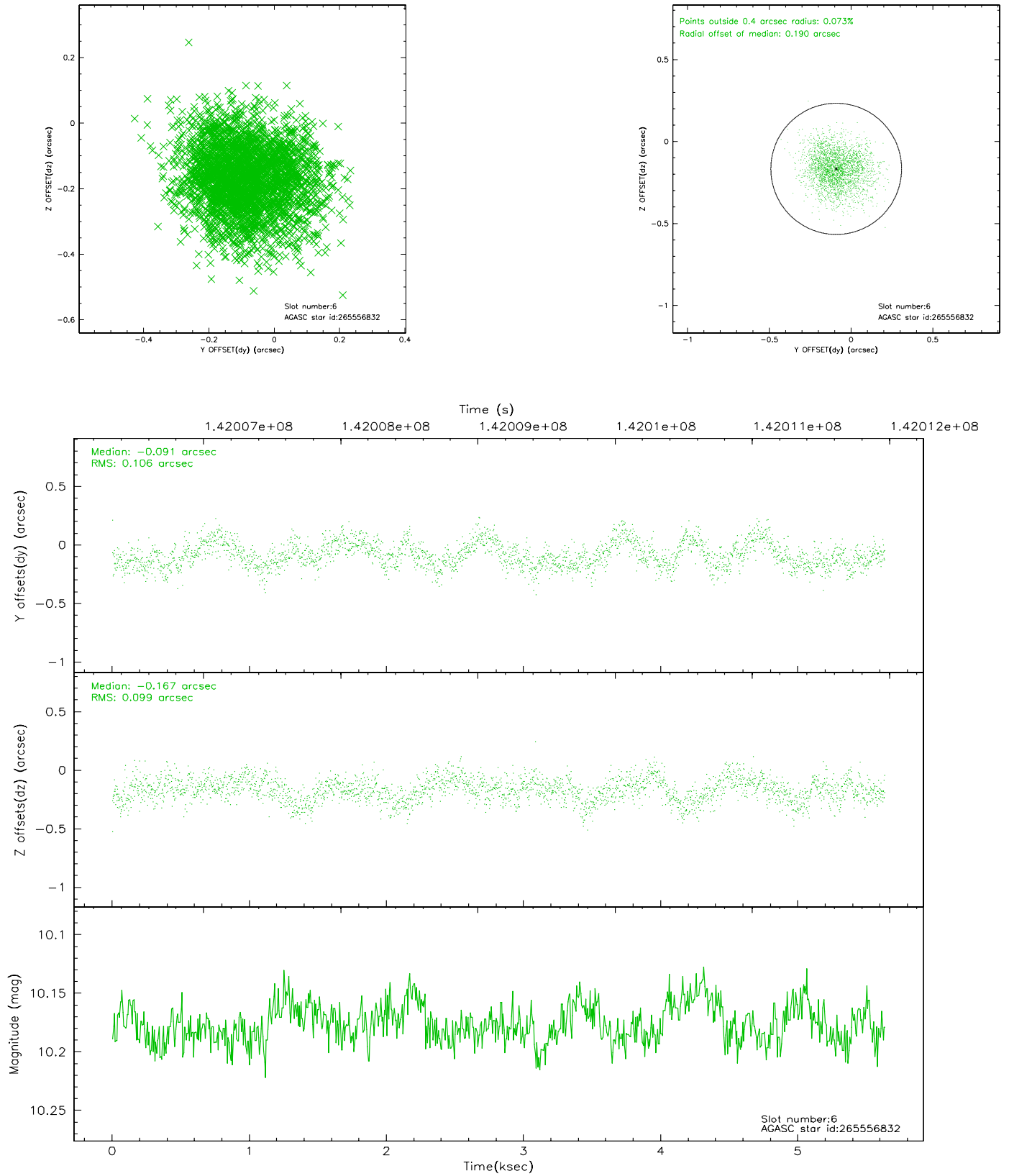
2.4.2 Slot 4



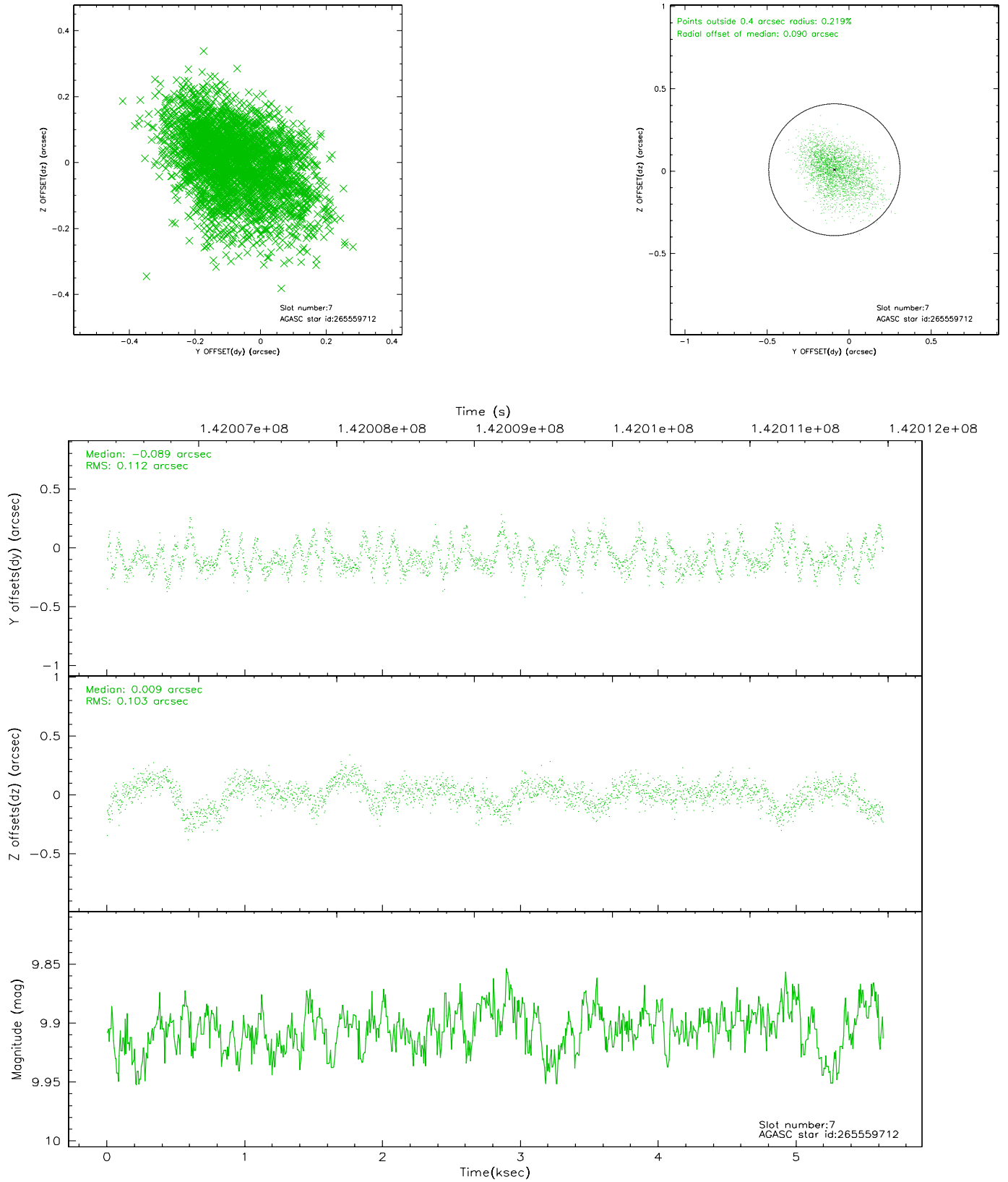
2.4.3 Slot 5



2.4.4 Slot 6

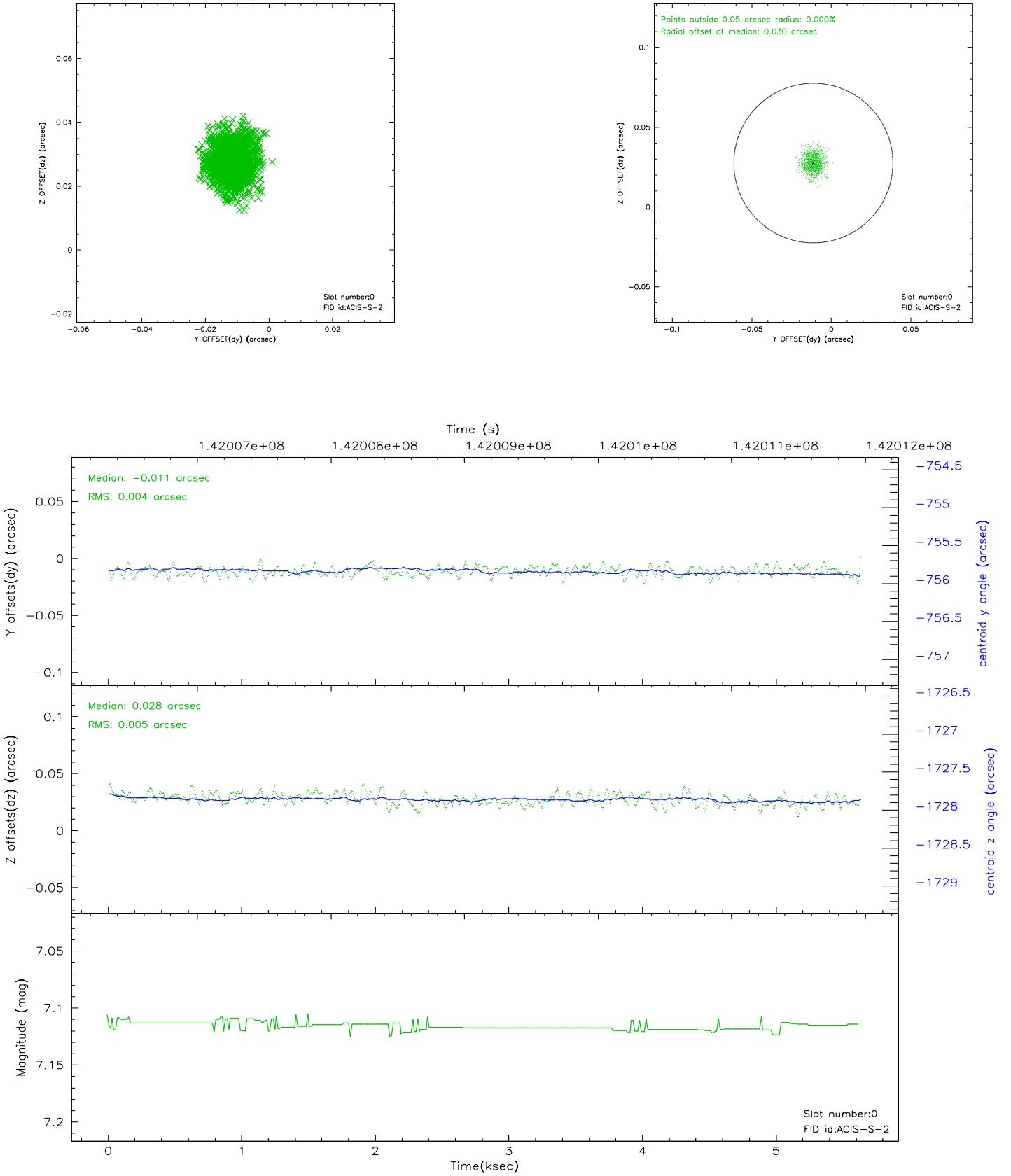


2.4.5 Slot 7

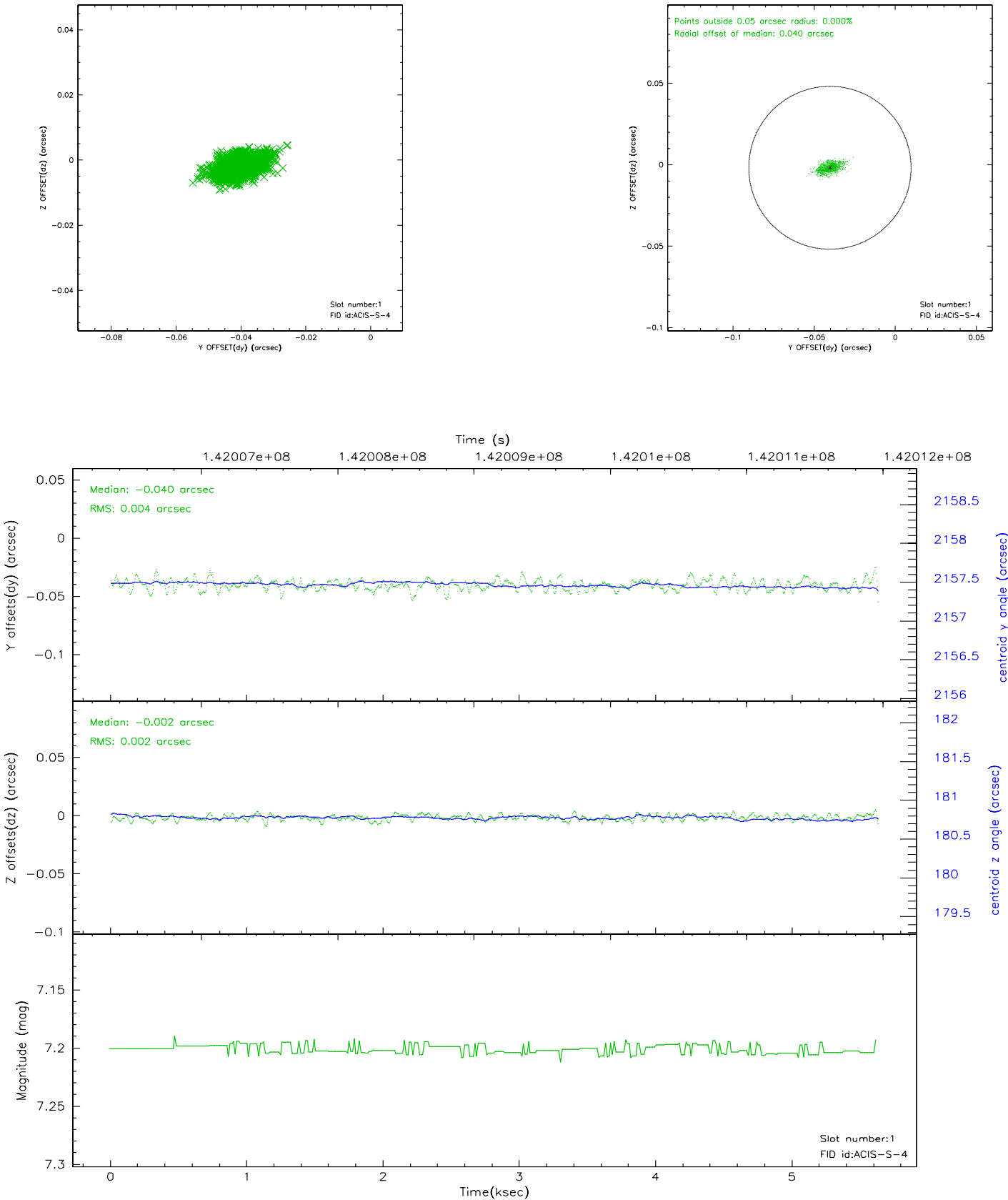


2.5 FID Slots

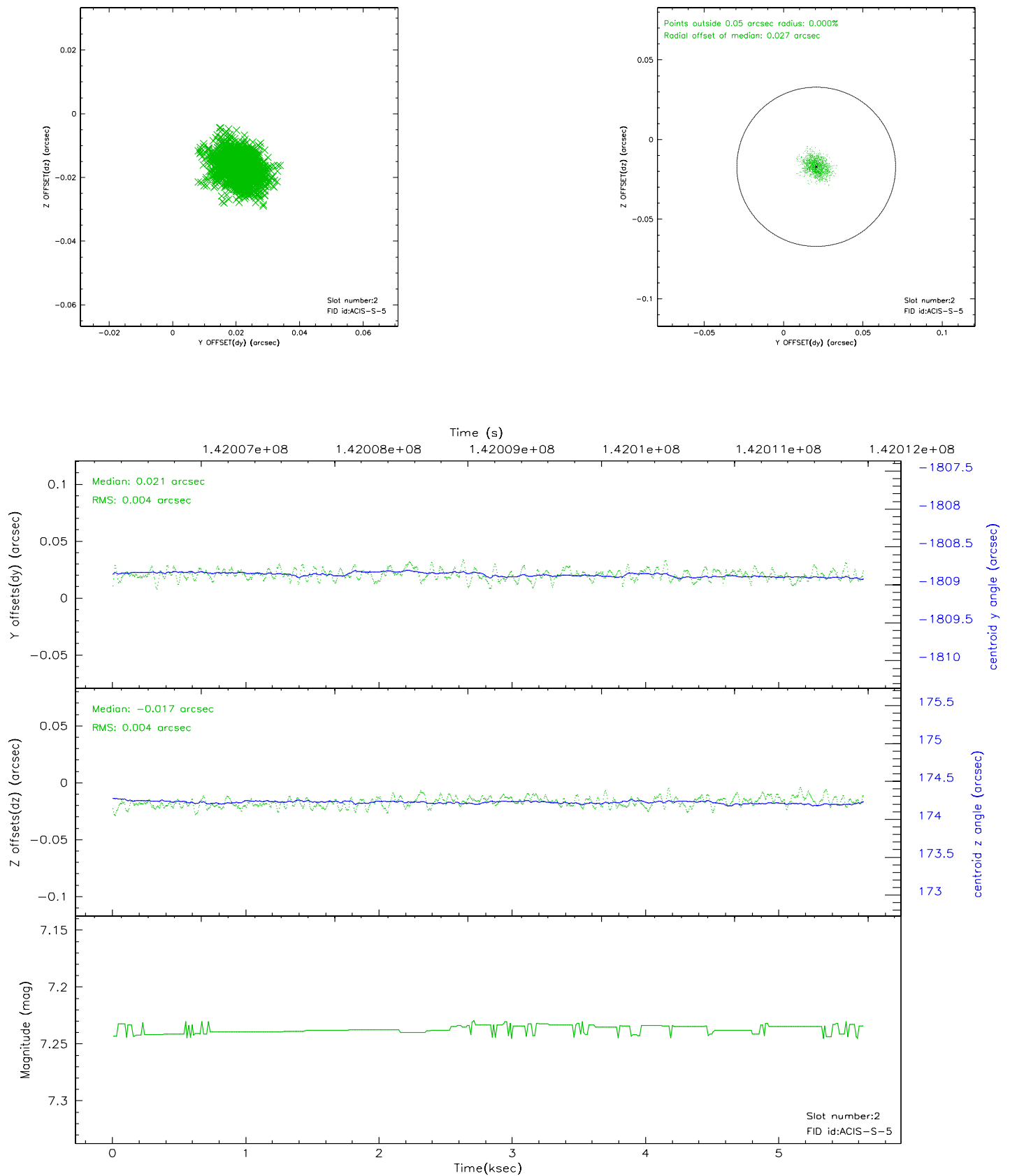
2.5.1 Slot 0



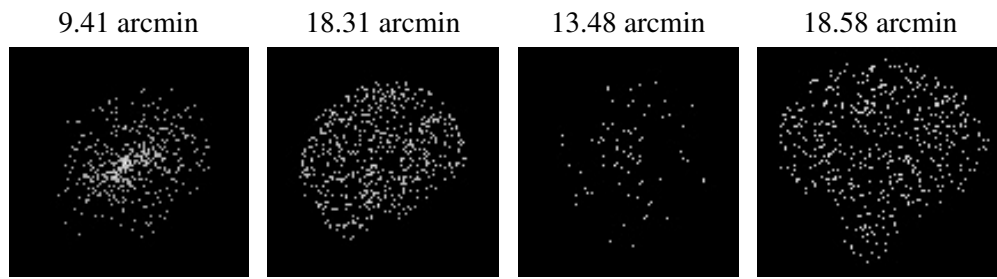
2.5.2 Slot 1



2.5.3 Slot 2



3 Point Sources



A Summary

A.1 Status

V&V Scientist	Joy Nichols
V&V Date (YYYY-MM-DD)	2006.09.22
V&V Edition	1
V&V Disposition and Status	OK
V&V Charge Time	4.963

A.2 Comments