

V&V Reference Report

L2 ASCDS Version : 7.6.10

Observation 3316 - L2 Version 001
Chandra X-Ray Center

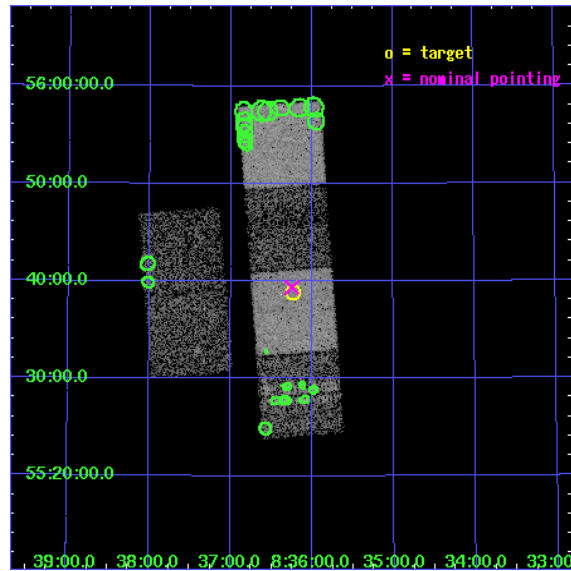
L2 Processing Date : Jan 13 2007

Contents

1	Front	2
2	OBI	3
2.1	OBI	3
2.1.1	Images	3
2.1.2	Bias	3
2.1.3	Parameters	4
2.1.4	Events	4
2.2	Compared Parameters	5
2.3	Aspect	6
2.4	Star Slots	9
2.4.1	Slot 3	9
2.4.2	Slot 4	10
2.4.3	Slot 5	11
2.4.4	Slot 6	12
2.4.5	Slot 7	13
2.5	FID Slots	14
2.5.1	Slot 0	14
2.5.2	Slot 1	15
2.5.3	Slot 2	16
3	Point Sources	17
A	Summary	18
A.1	Status	18
A.2	Comments	18

1 Front

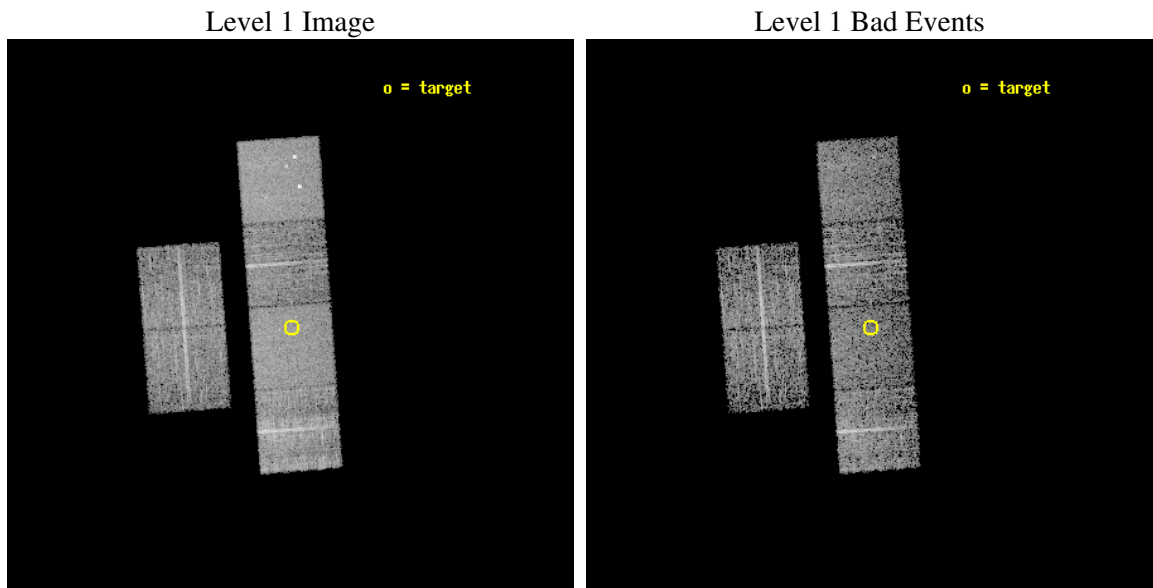
seq_num	900155
obs_id	3316
title	THE SHEEP SURVEY: WHAT KIND OF OBJECTS MAKE THE X-RAY BACKGROUND?
observer	Professor Kirpal Nandra
object	AX J0836.2+5538
dtcycle	0
cycle	P
ra_targ	129.057917
dec_targ	55.646667
ra_nom	129.06217481654
dec_nom	55.656135580282
roll_nom	85.808490381096
revision	2
ontime	4448.0000041425
livetime	4391.676749826
ontime2	4448.0000041425
ontime3	4448.0000041425
ontime5	4448.0000041425
ontime6	4448.0000041425
ontime7	4448.0000041425
ontime8	4448.0000041425
l2events	56899



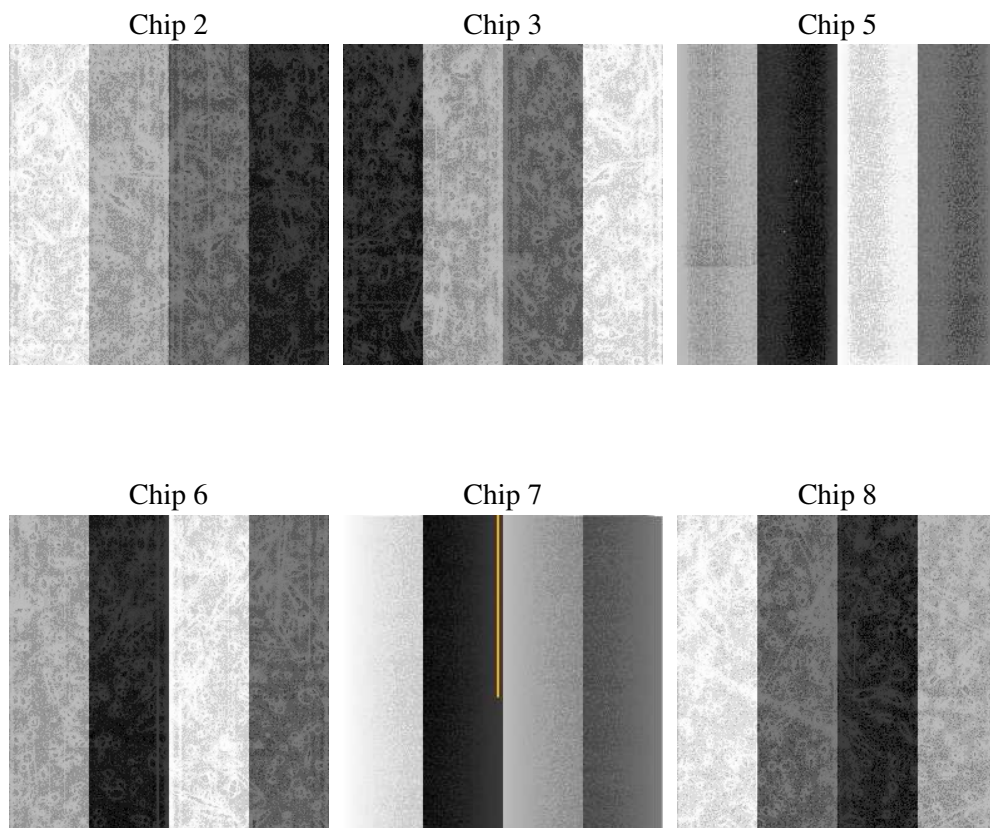
2 OBI

2.1 OBI

2.1.1 Images



2.1.2 Bias



2.1.3 Parameters

obi_num	3
ascdsver	7.6.10
caldsver	3.3.0
date	2007-01-13T09:35:08
revision	2

sched_exp_time	4500.000000
ontime	4448.0000041425
ontime2	4448.0000041425
ontime3	4448.0000041425
ontime5	4448.0000041425
ontime6	4448.0000041425
ontime7	4448.0000041425
ontime8	4448.0000041425
l1events	220177

2.1.4 Events

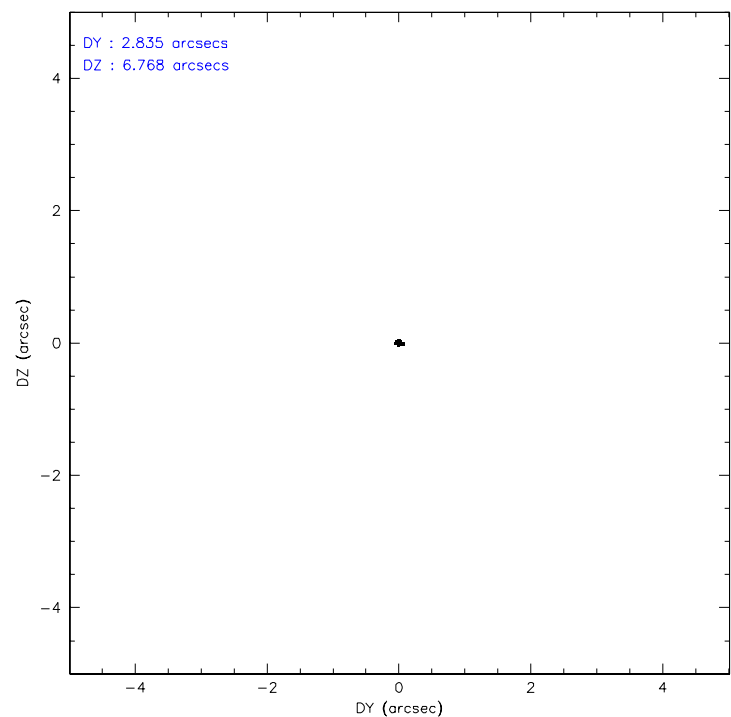
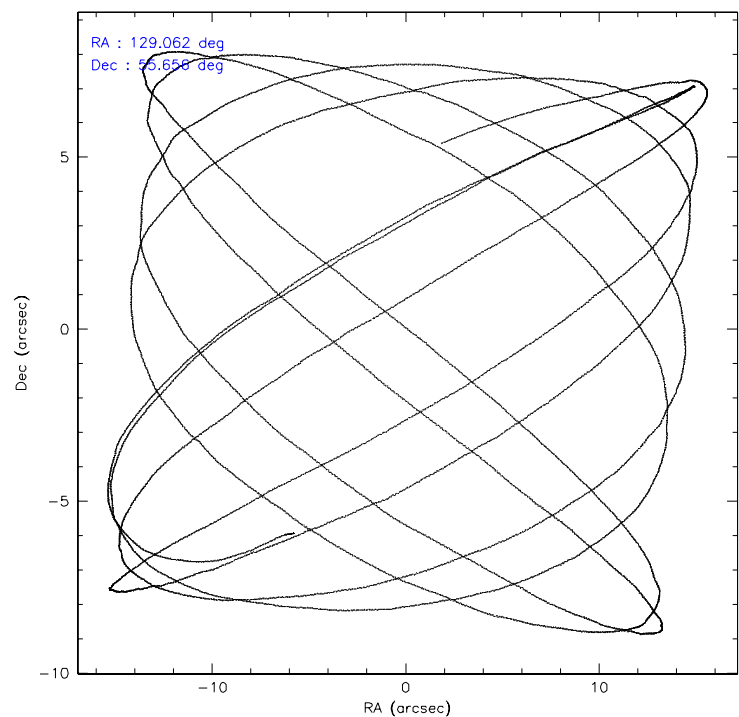
	ccd 2	ccd 3	ccd 5	ccd 6	ccd 7	ccd 8
level 1 events	31307	29458	45241	29574	40215	44382
rejected events	27012	25130	22635	25089	21077	30058
rejected %	86%	85%	50%	84%	52%	67%

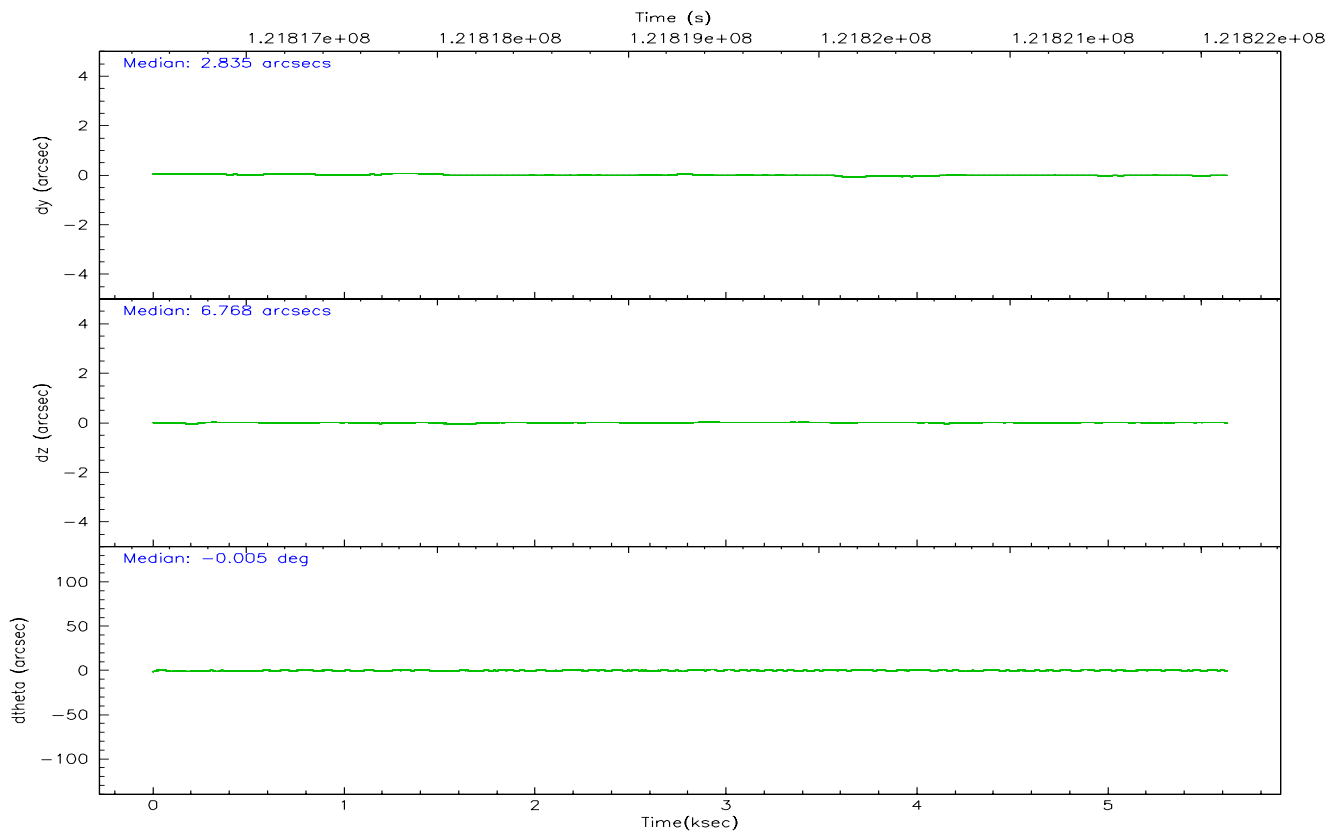
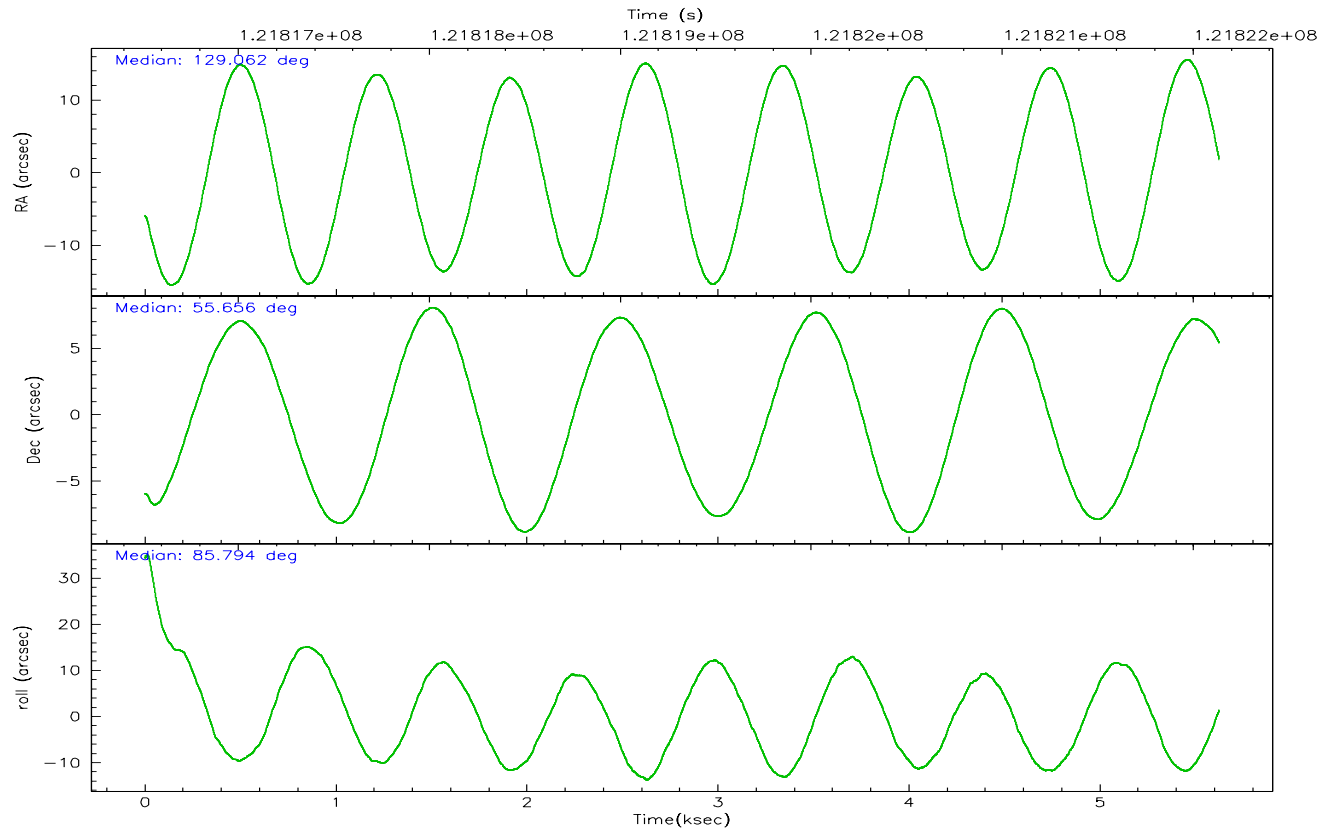
	ccd 2	ccd 3	ccd 5	ccd 6	ccd 7	ccd 8
grade 0 events	1836	1857	3053	1971	1921	4800
	5%	6%	6%	6%	4%	10%
grade 1 events	18	14	63	15	33	30
	0%	0%	0%	0%	0%	0%
grade 2 events	1042	1099	6472	1079	3735	2658
	3%	3%	14%	3%	9%	5%
grade 3 events	280	311	964	303	1593	2016
	0%	1%	2%	1%	3%	4%
grade 4 events	355	346	937	316	1716	1805
	1%	1%	2%	1%	4%	4%
grade 5 events	1000	1107	2994	1117	3436	1507
	3%	3%	6%	3%	8%	3%
grade 6 events	783	716	11199	818	10195	3052
	2%	2%	24%	2%	25%	6%
grade 7 events	25993	24008	19559	23955	17586	28514
	83%	81%	43%	81%	43%	64%

2.2 Compared Parameters

Parameter	Planned	Actual	Parameter	Planned	Actual
Instrument	ACIS	ACIS	Obspar format version number	6	6
Detector	ACIS-235678	ACIS-235678	Obspar file type	PREDICTED	ACTUAL
Grating	NONE	NONE	Obspar update status	NONE	UPDATED
Data mode	FAINT	FAINT	Number of optional ACIS chips dropped	0	0
Observation mode	POINTING	POINTING	On-chip summing requested	N	N
Pointing RA	129.083733	129.0621748165418	Subarray requested	NONE	NONE
Pointing Dec	55.631678	55.65613558028212	Alternating exposures requested	N	N
Pointing Roll	85.634072	85.80849038109598	Primary exposure time	0.000000	3.2
SIM focus pos (mm)	-0.684267	-0.6828225247311905			
SIM defocus (mm)	0	0.001444936568705701			
SIM translation stage pos (mm)	-190.132523	-190.1400660498719			
SIM translation stage offset (mm)	0	0.00754346686406393			
Observation start time	121817637.184000	121816203.64763			
Observation start date	2001-11-10T22:12:53	2001-11-10T21:50:03			
Observation end time	121822137.184000	121822271.13537			
Observation end date	2001-11-10T23:27:53	2001-11-10T23:31:11			
Read mode	TIMED	TIMED			

2.3 Aspect



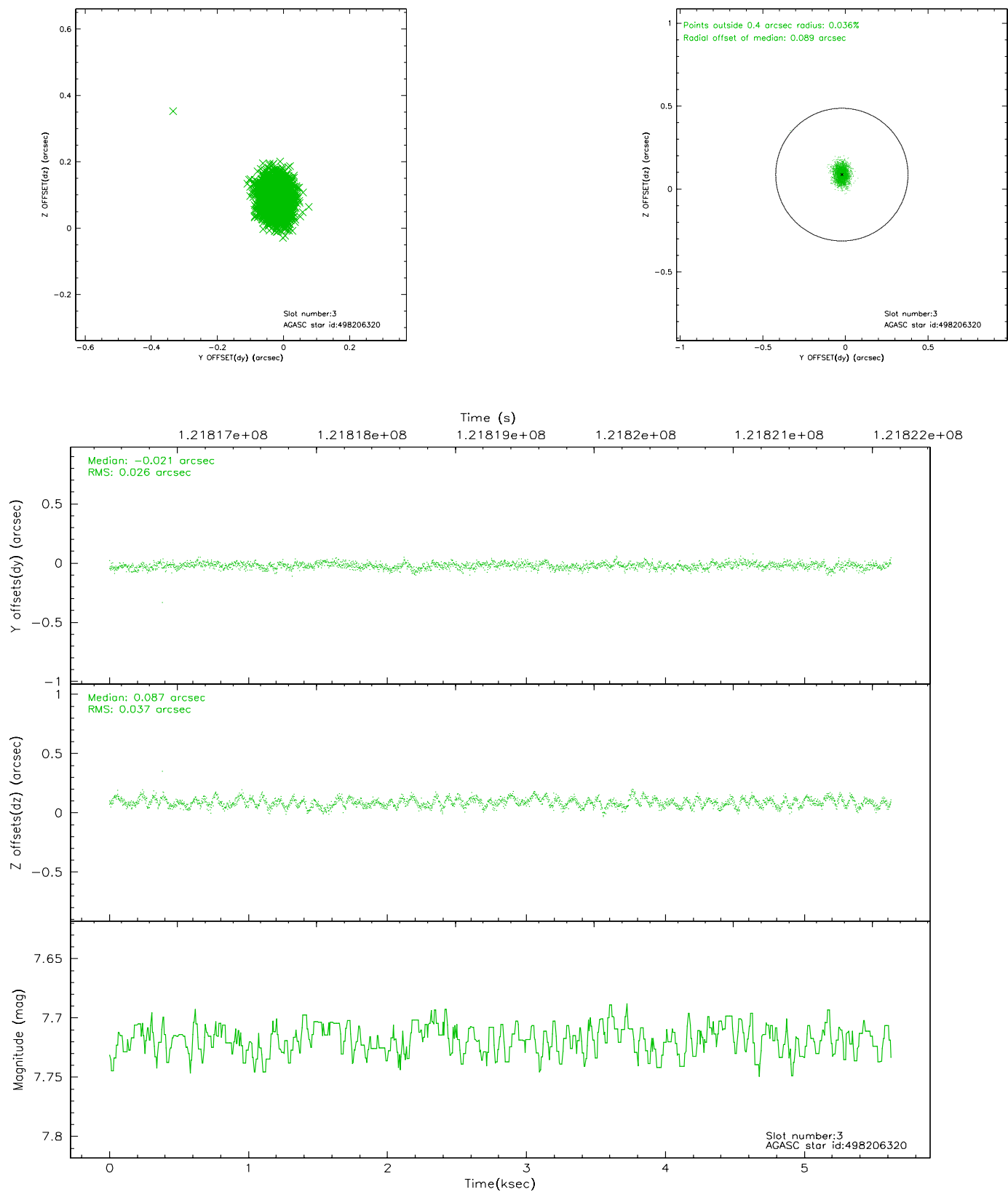


Slot Statistics

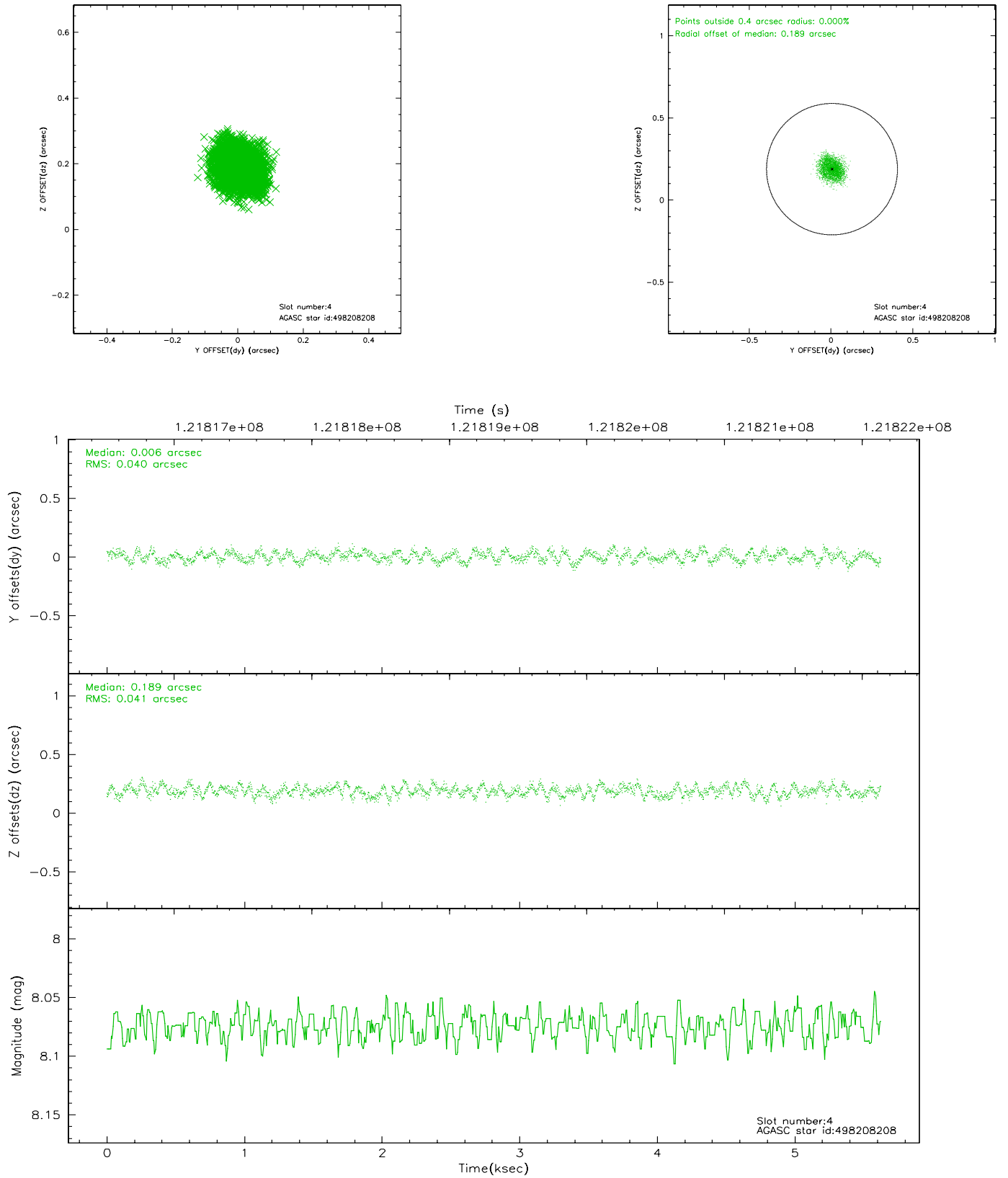
slot	status	id	mag	n_pts	med_dy	med_dz	dr1	dr2	ra	dec	mean_y	mean_z
0	FID	ACIS-S-2	7.11	1372	-0.009	0.038	0.006	0.010	0.000000	0.000000	-755.47	-1727.89
1	FID	ACIS-S-4	7.20	1372	-0.079	-0.006	0.005	0.008	0.000000	0.000000	2157.24	179.47
2	FID	ACIS-S-5	7.24	1372	0.057	-0.024	0.006	0.010	0.000000	0.000000	-1806.89	174.30
3	GUIDE	498206320	7.72	2745	-0.021	0.087	0.047	0.076	129.264284	55.839214	775.05	-307.87
4	GUIDE	498208208	8.07	2745	0.006	0.189	0.062	0.094	130.175717	55.667734	317.51	-2199.97
5	GUIDE	498206776	9.18	2745	-0.004	0.217	0.104	0.168	130.185581	55.785525	741.97	-2181.75
6	GUIDE	498076160	9.95	2744	0.038	-0.060	0.120	0.190	128.113251	56.269618	2157.33	2108.81
7	GUIDE	498075392	8.21	2744	-0.024	-0.424	0.073	0.117	127.928319	55.776476	363.03	2372.94

2.4 Star Slots

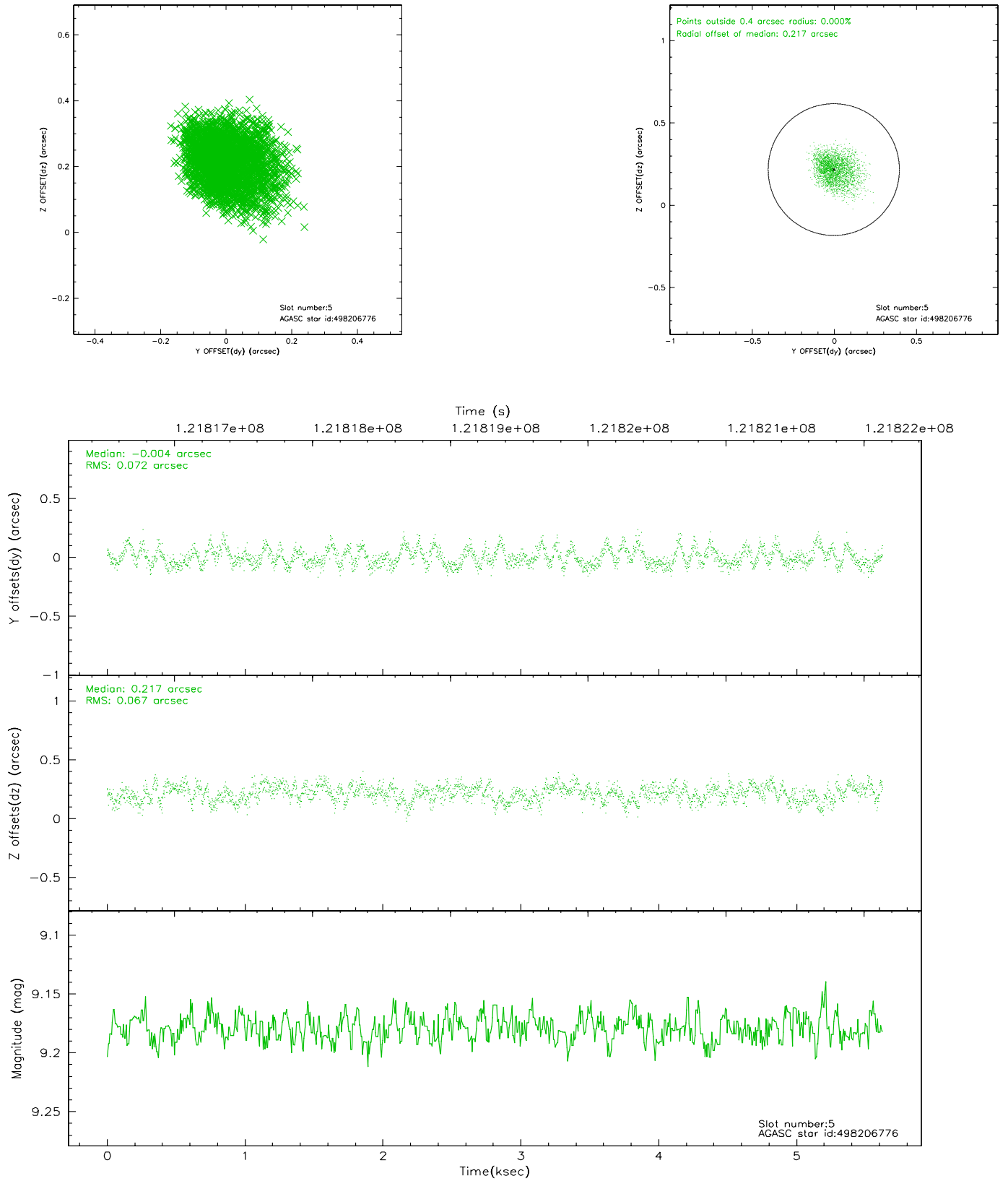
2.4.1 Slot 3



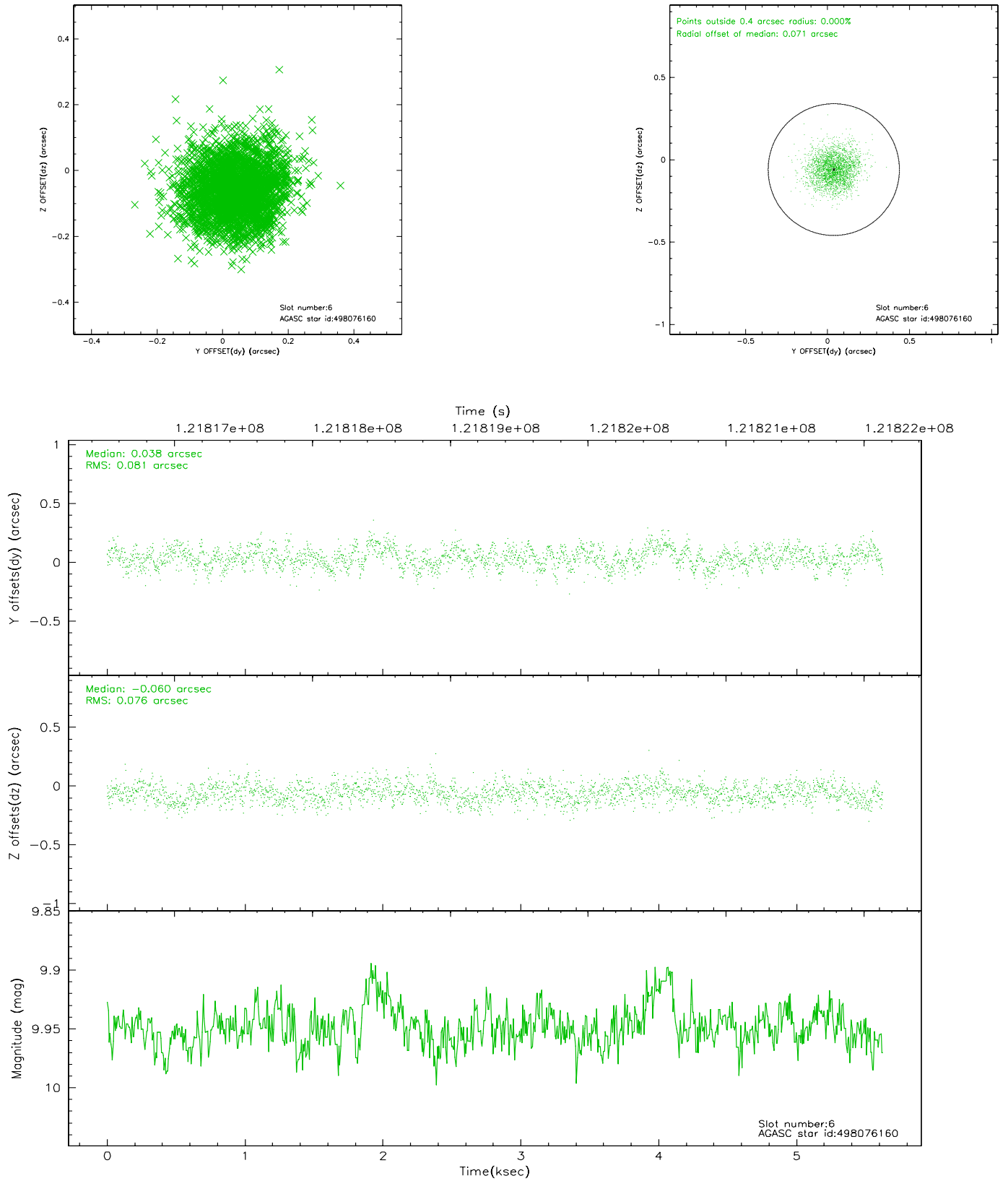
2.4.2 Slot 4



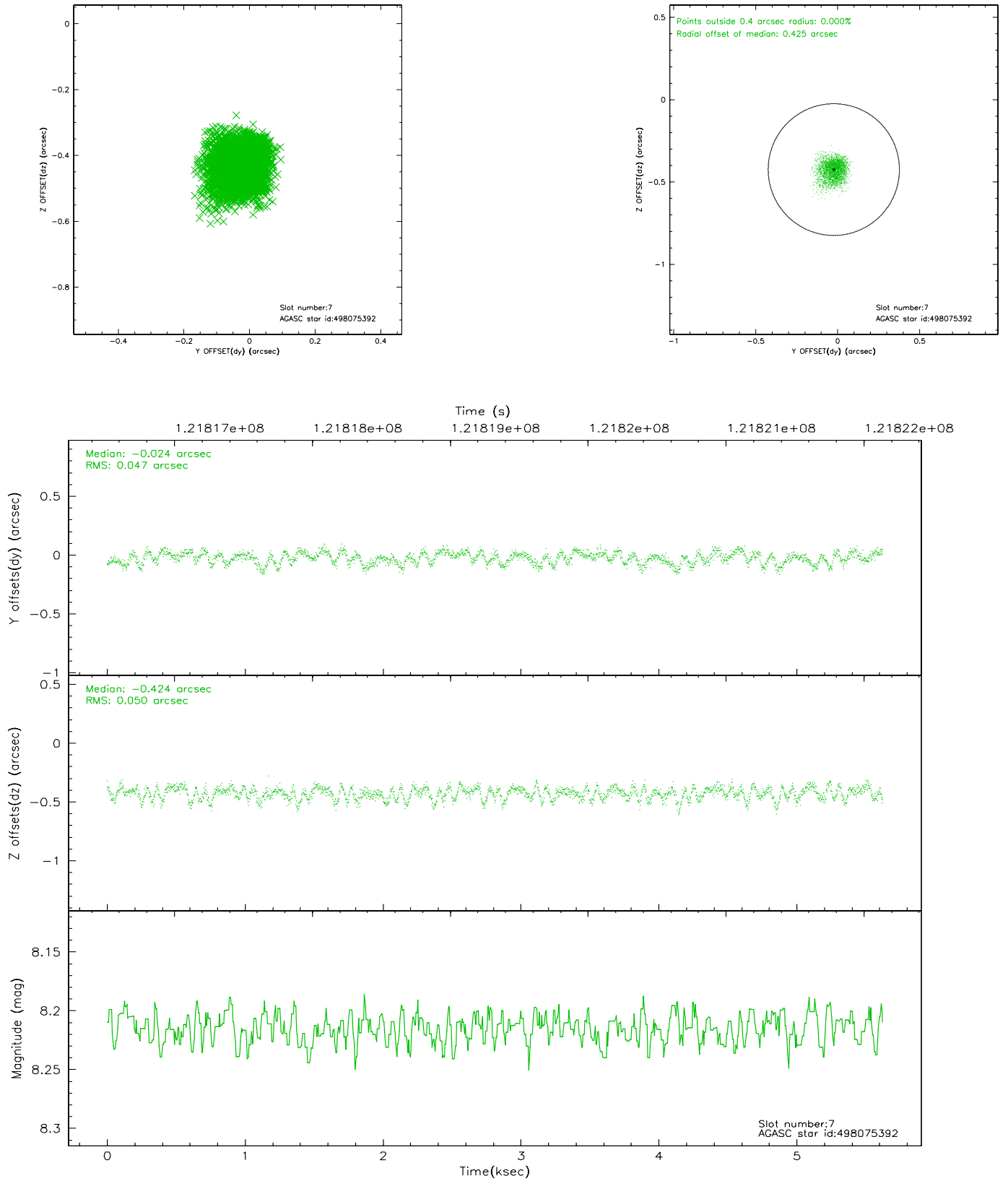
2.4.3 Slot 5



2.4.4 Slot 6

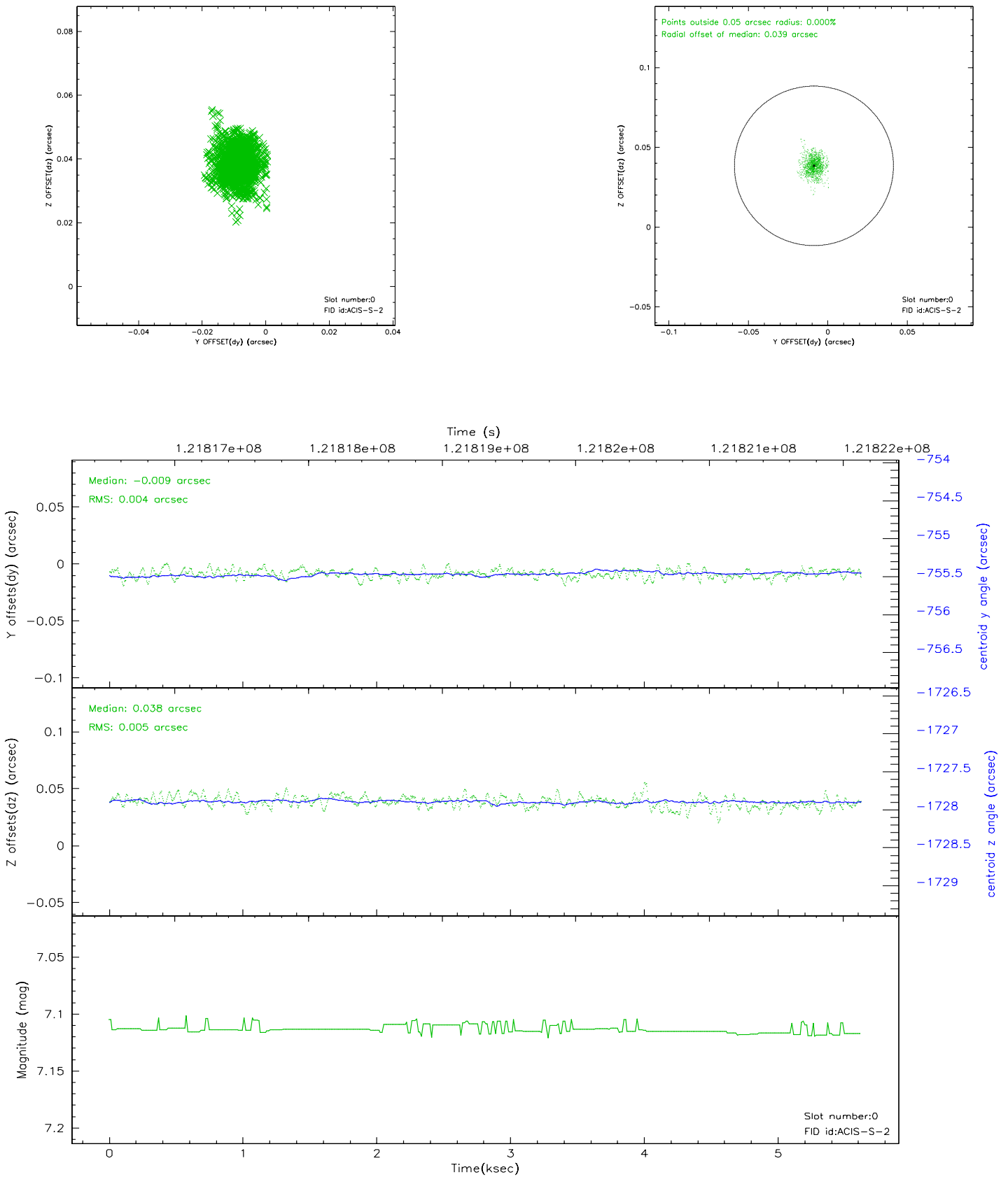


2.4.5 Slot 7

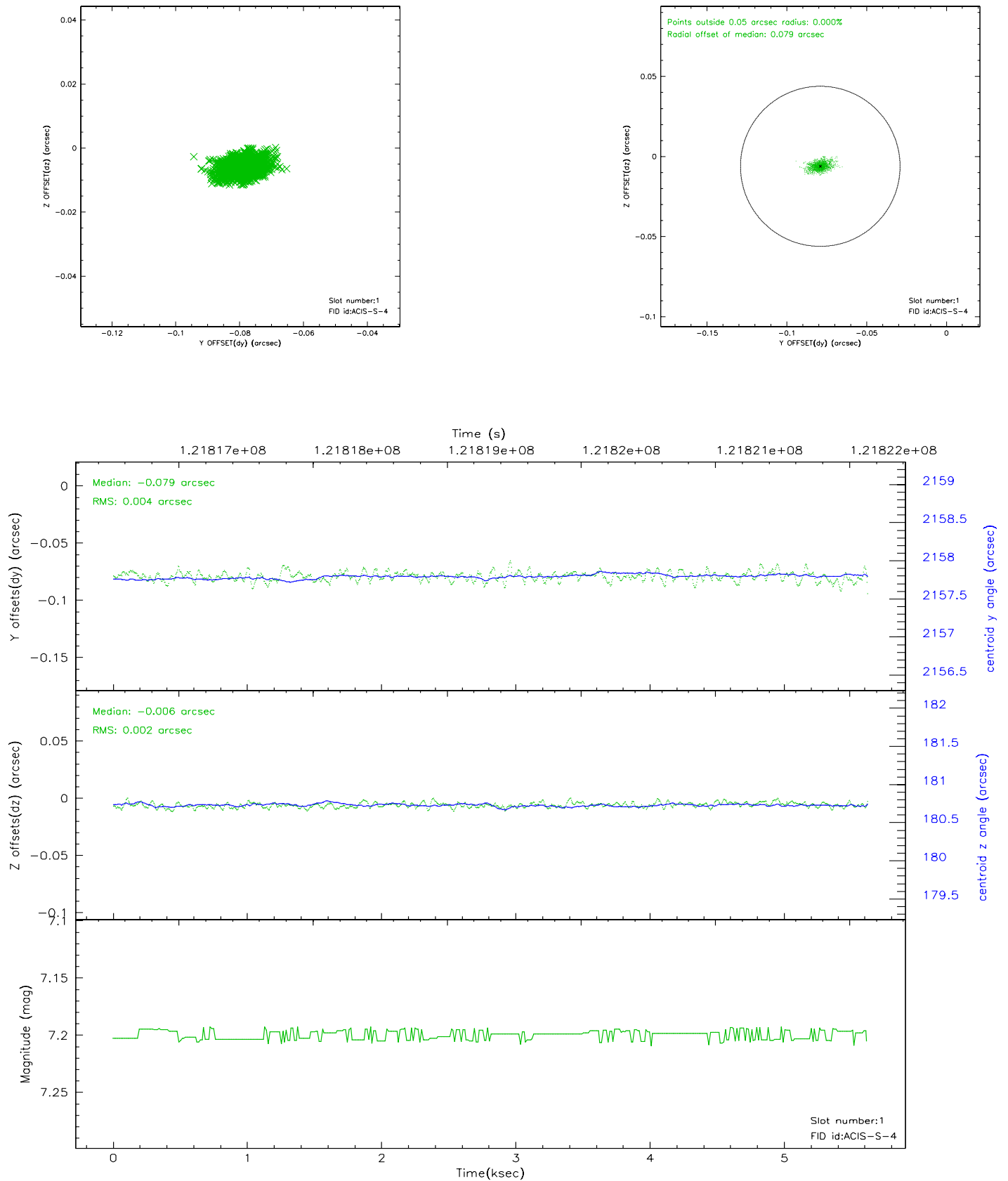


2.5 FID Slots

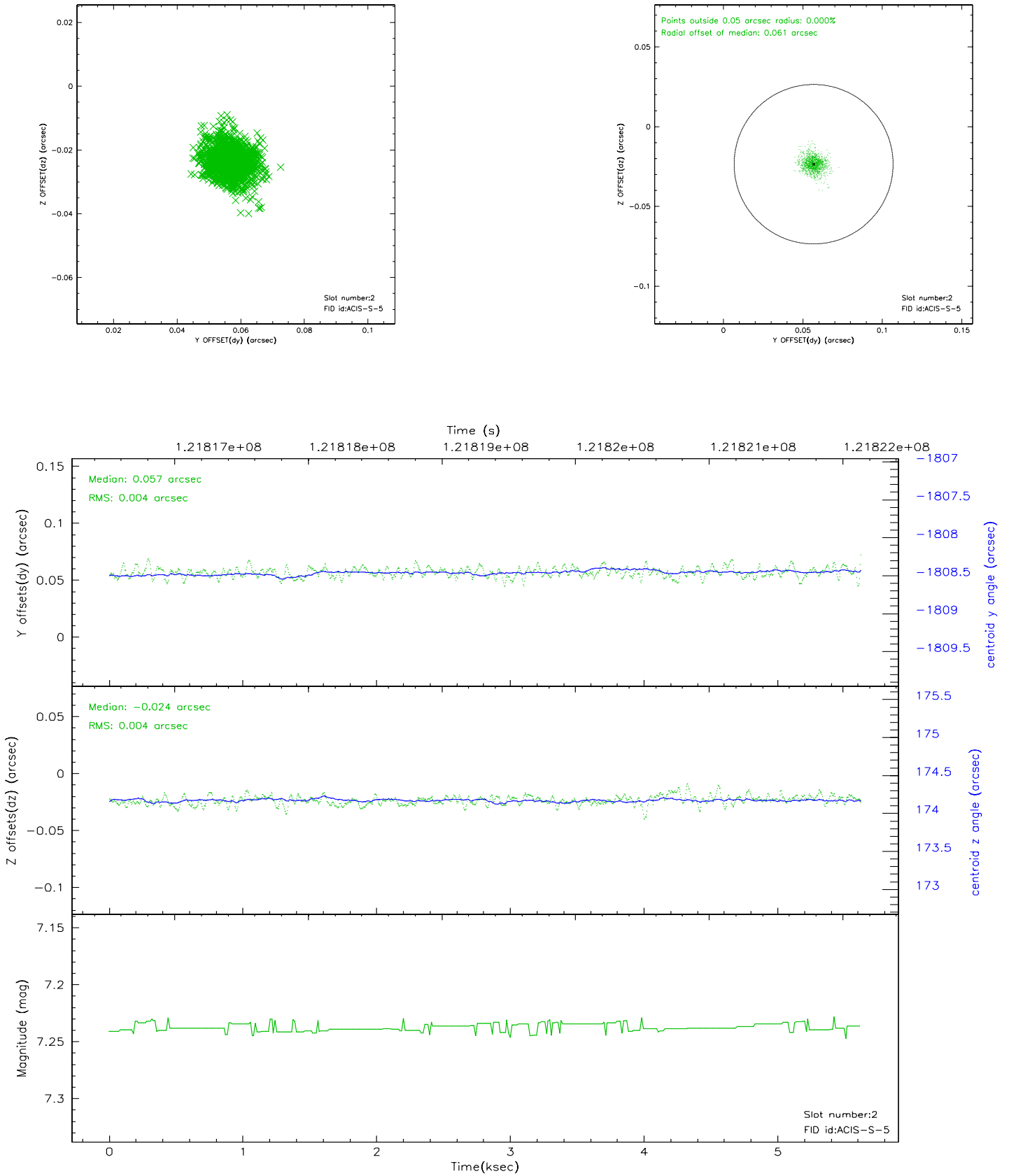
2.5.1 Slot 0



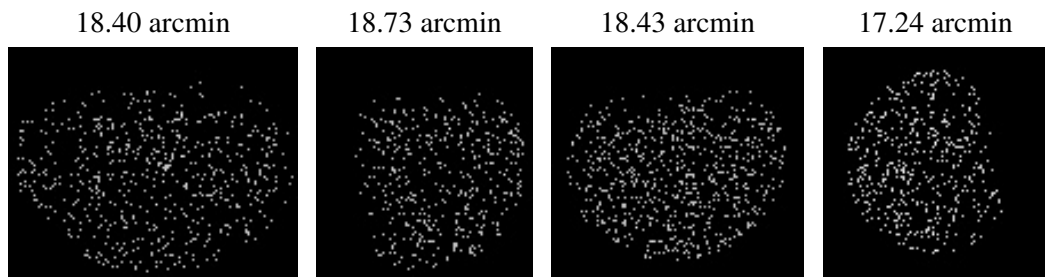
2.5.2 Slot 1



2.5.3 Slot 2



3 Point Sources



A Summary

A.1 Status

V&V Scientist	Jen Lauer
V&V Date (YYYY-MM-DD)	2007.01.16
V&V Edition	1
V&V Disposition and Status	OK
V&V Charge Time	4.448

A.2 Comments

Focal plane temperature is warmer than -118.7 C degrees during the entire observation. This temperature is the upper limit of the verified ACIS calibration for the front-illuminated chips. The focal plane temperature is warmer than -116.7 degrees C for the entire observation observation. This temperature is the upper limit of the verified ACIS calibration for the back-illuminated chips. The ACIS spectral response calibration is less accurate at these warmer temperatures than it is at -119.7 C. Users whose science objectives depend on the most accurate spectral response (ie: fitting line-rich spectra) may notice an effect. Users whose science objectives do not depend on the most accurate spectral response should not notice an effect.