

V&V Reference Report

L2 ASCDS Version : 7.6.9

Observation 3308 - L2 Version 001
Chandra X-Ray Center

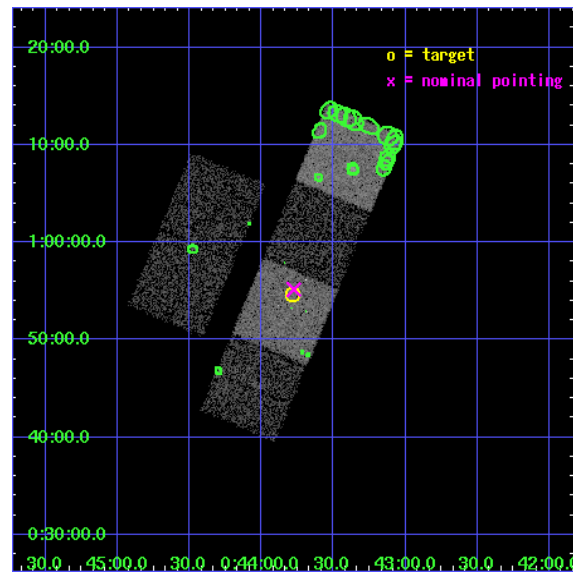
L2 Processing Date : Sep 22 2006

Contents

1	Front	2
2	OBI	3
2.1	OBI	3
2.1.1	Images	3
2.1.2	Bias	3
2.1.3	Parameters	4
2.1.4	Events	4
2.2	Compared Parameters	5
2.3	Aspect	6
2.4	Star Slots	9
2.4.1	Slot 3	9
2.4.2	Slot 4	10
2.4.3	Slot 5	11
2.4.4	Slot 6	12
2.4.5	Slot 7	13
2.5	FID Slots	14
2.5.1	Slot 0	14
2.5.2	Slot 1	15
2.5.3	Slot 2	16
3	Point Sources	17
A	Summary	18
A.1	Status	18
A.2	Comments	18

1 Front

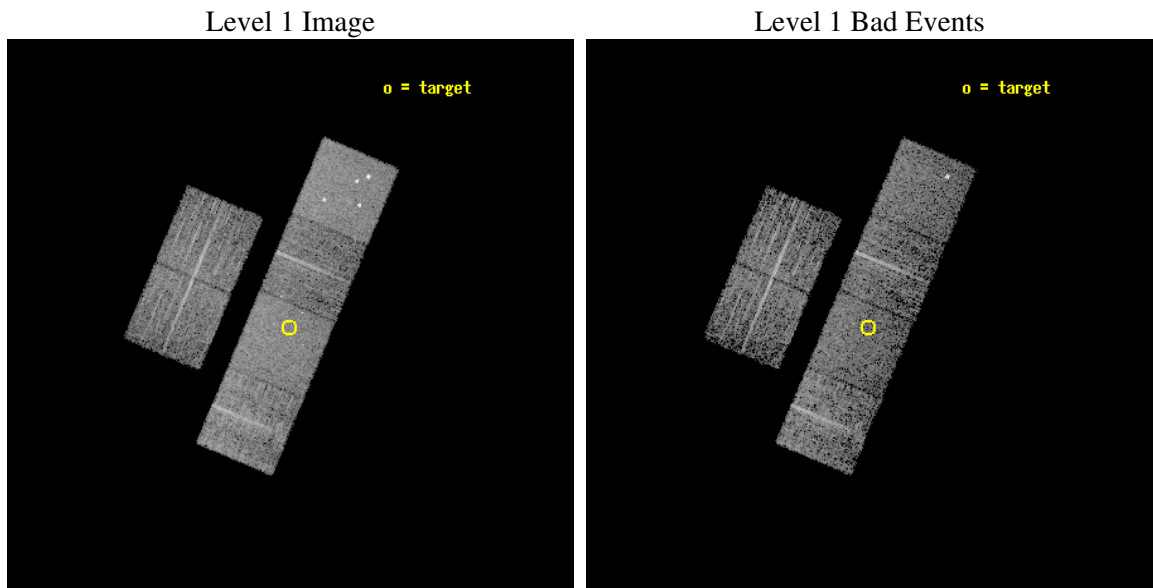
seq_num	900147
obs_id	3308
title	THE SHEEP SURVEY: WHAT KIND OF OBJECTS MAKE THE X-RAY BACKGROUND?
observer	Professor Kirpal Nandra
object	AX J0043.7+0054
dtcycle	0
cycle	P
ra_targ	10.945833
dec_targ	0.91
ra_nom	10.943772066326
dec_nom	0.91942518871196
roll_nom	112.80903405174
revision	2
ontime	4662.3999826312
livetime	4603.3618666909
ontime2	4662.3999826312
ontime3	4662.3999826312
ontime5	4662.3999826312
ontime6	4662.3999826312
ontime7	4662.3999826312
ontime8	4662.3999826312
l2events	48487



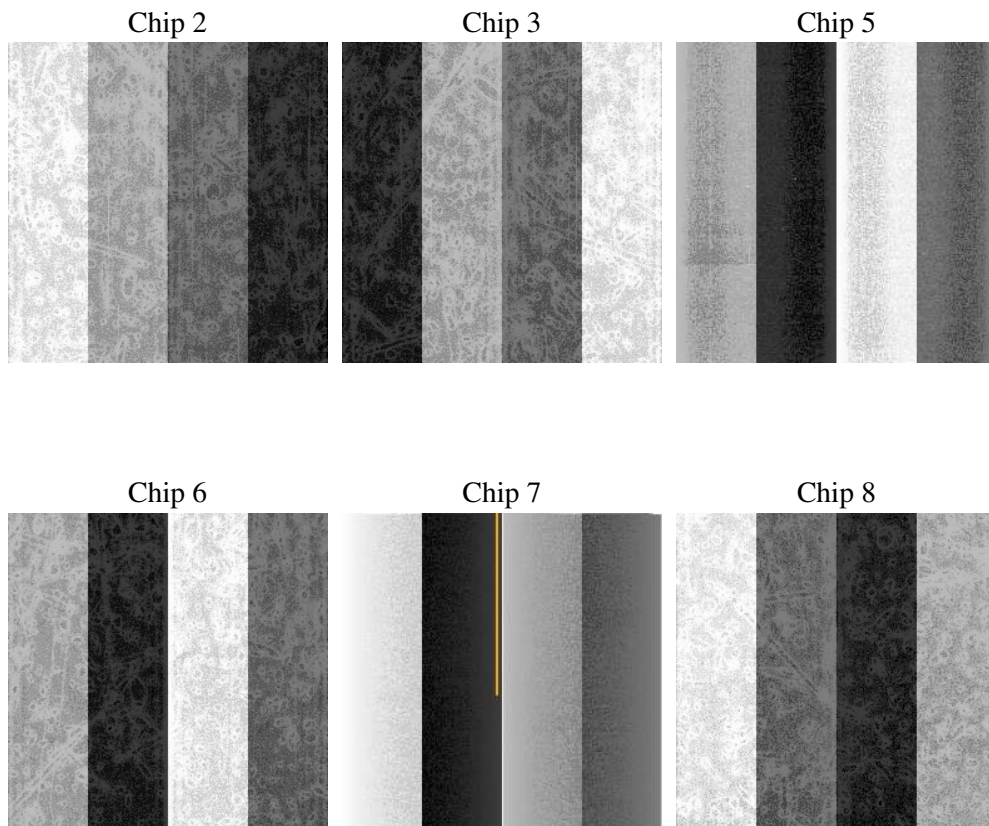
2 OBI

2.1 OBI

2.1.1 Images



2.1.2 Bias



2.1.3 Parameters

obi_num	0
ascdsver	7.6.9
caldsver	3.2.3
date	2006-09-22T18:21:41
revision	2

sched_exp_time	4700.000000
ontime	4667.0410217345
ontime2	4667.0410217345
ontime3	4667.0410217345
ontime5	4667.0410217345
ontime6	4667.0410217345
ontime7	4667.0410217345
ontime8	4667.0410217345
l1events	225237

2.1.4 Events

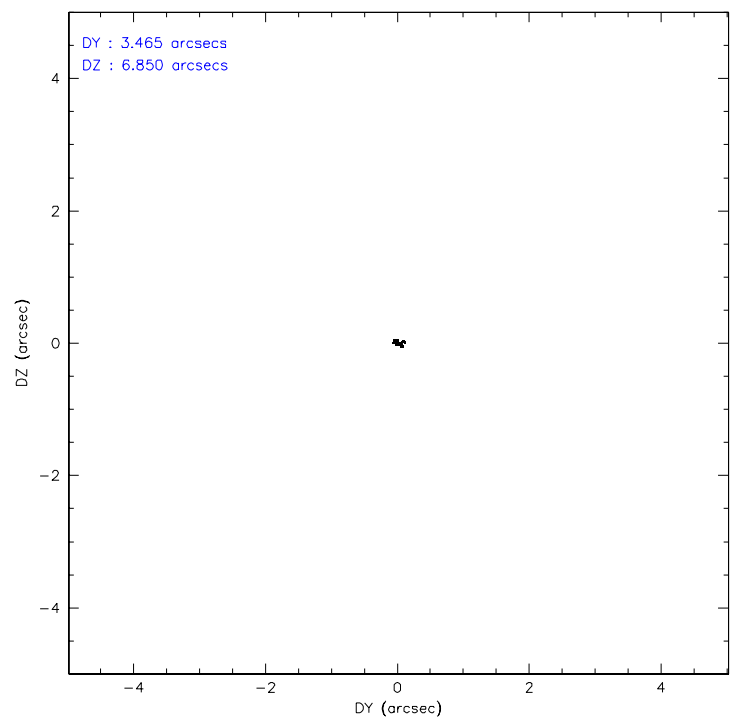
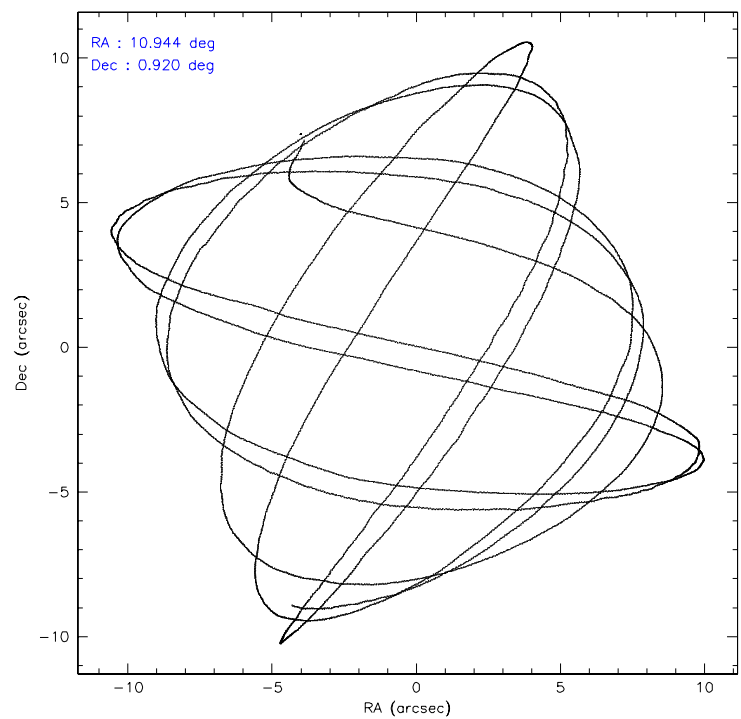
	ccd 2	ccd 3	ccd 5	ccd 6	ccd 7	ccd 8
level 1 events	33164	30893	47362	30825	41002	41991
rejected events	29212	27120	25505	26728	25021	32500
rejected %	88%	87%	53%	86%	61%	77%

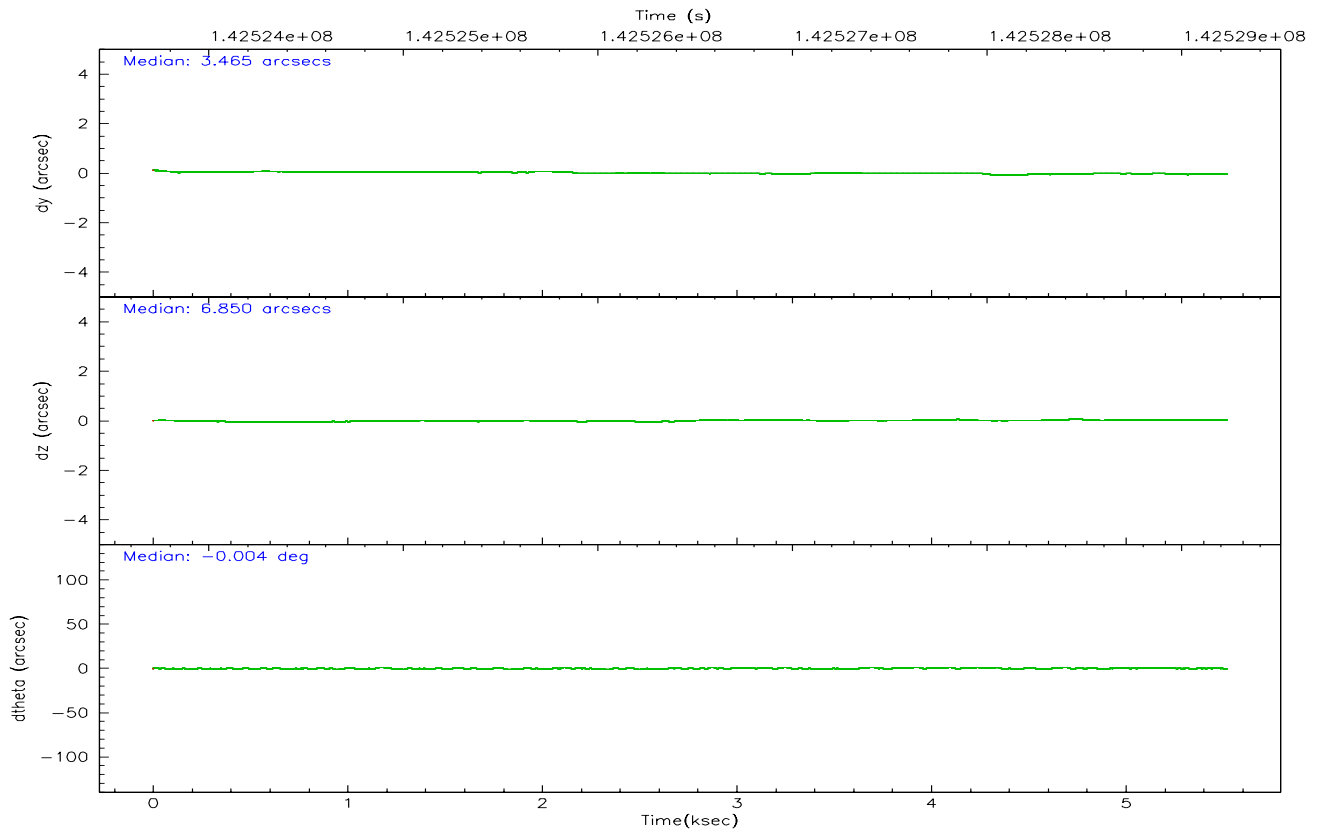
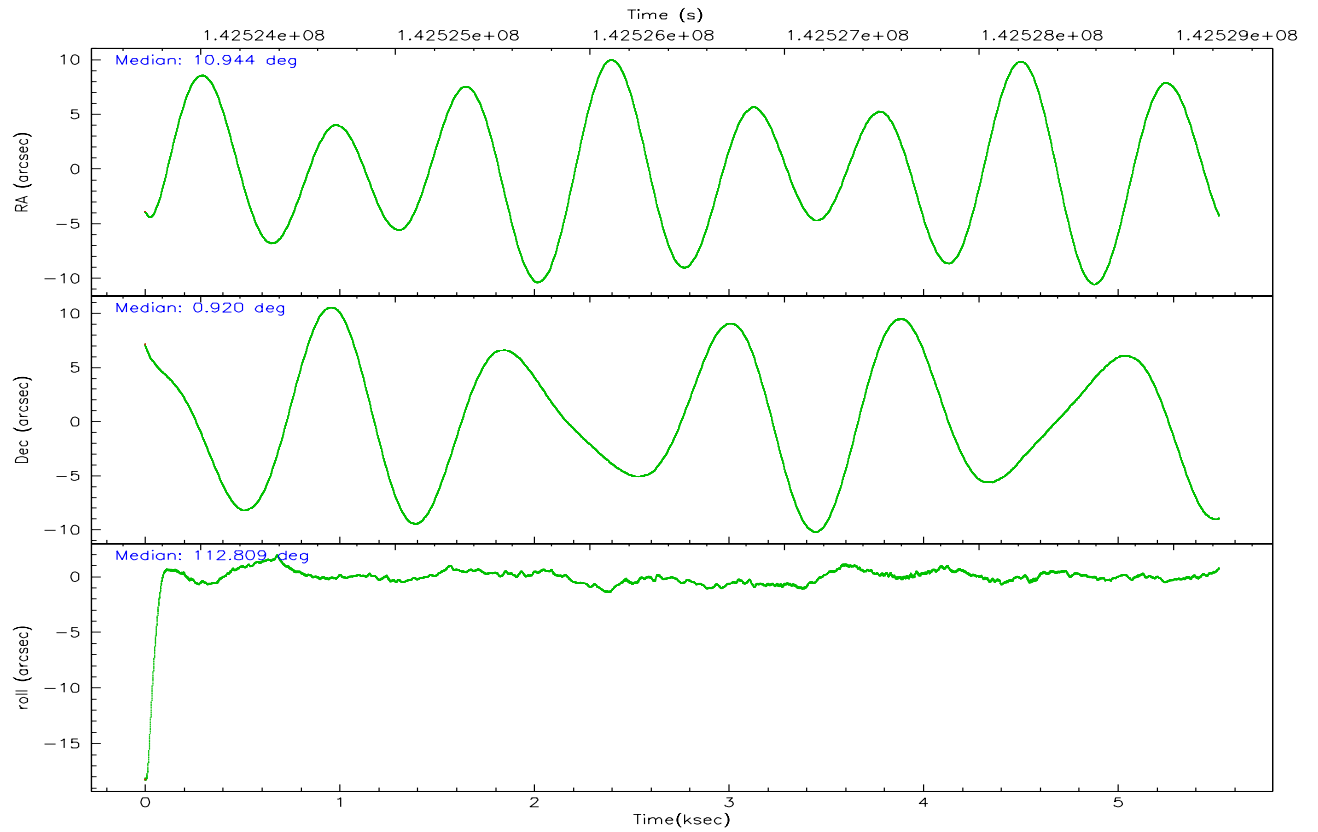
	ccd 2	ccd 3	ccd 5	ccd 6	ccd 7	ccd 8
grade 0 events	1721	1590	3199	1753	1150	3001
	5%	5%	6%	5%	2%	7%
grade 1 events	21	17	42	13	25	27
	0%	0%	0%	0%	0%	0%
grade 2 events	856	833	6666	801	3873	1999
	2%	2%	14%	2%	9%	4%
grade 3 events	364	329	431	383	885	1090
	1%	1%	0%	1%	2%	2%
grade 4 events	342	358	439	376	798	961
	1%	1%	0%	1%	1%	2%
grade 5 events	1081	1238	2331	1339	2611	1704
	3%	4%	4%	4%	6%	4%
grade 6 events	677	668	11148	787	9292	2450
	2%	2%	23%	2%	22%	5%
grade 7 events	28102	25860	23106	25373	22368	30759
	84%	83%	48%	82%	54%	73%

2.2 Compared Parameters

Parameter	Planned	Actual	Parameter	Planned	Actual
Instrument	ACIS	ACIS	Obspar format version number	6	6
Detector	ACIS-235678	ACIS-235678	Obspar file type	PREDICTED	ACTUAL
Grating	NONE	NONE	Obspar update status	NONE	UPDATED
Data mode	FAINT	FAINT	Number of optional ACIS chips dropped	0	0
Observation mode	POINTING	POINTING	On-chip summing requested	N	N
Pointing RA	10.965622	10.94377206632603	Subarray requested	NONE	NONE
Pointing Dec	0.903270	0.9194251887119567	Alternating exposures requested	N	N
Pointing Roll	112.652094	112.8090340517398	Primary exposure time	0.000000	3.2
SIM focus pos (mm)	-0.684267	-0.6828225247311905			
SIM defocus (mm)	0	0.001444936568705701			
SIM translation stage pos (mm)	-190.132523	-190.1425803651734			
SIM translation stage offset (mm)	0	0.01005778216563158			
Observation start time	142524531.184000	142523260.63581			
Observation start date	2002-07-08T14:07:47	2002-07-08T13:47:40			
Observation end time	142529231.184000	142529781.17358			
Observation end date	2002-07-08T15:26:07	2002-07-08T15:36:21			
Read mode	TIMED	TIMED			

2.3 Aspect



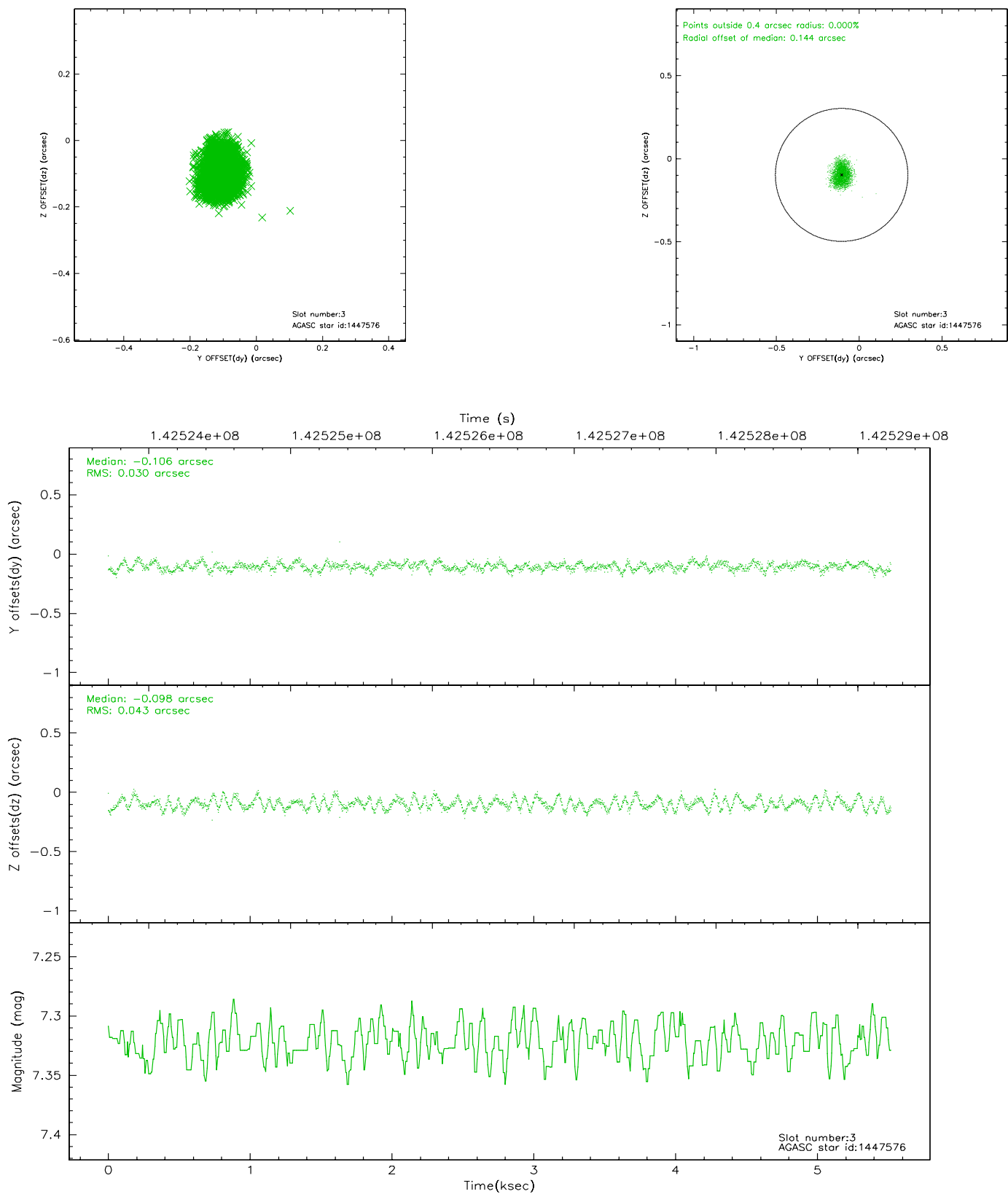


Slot Statistics

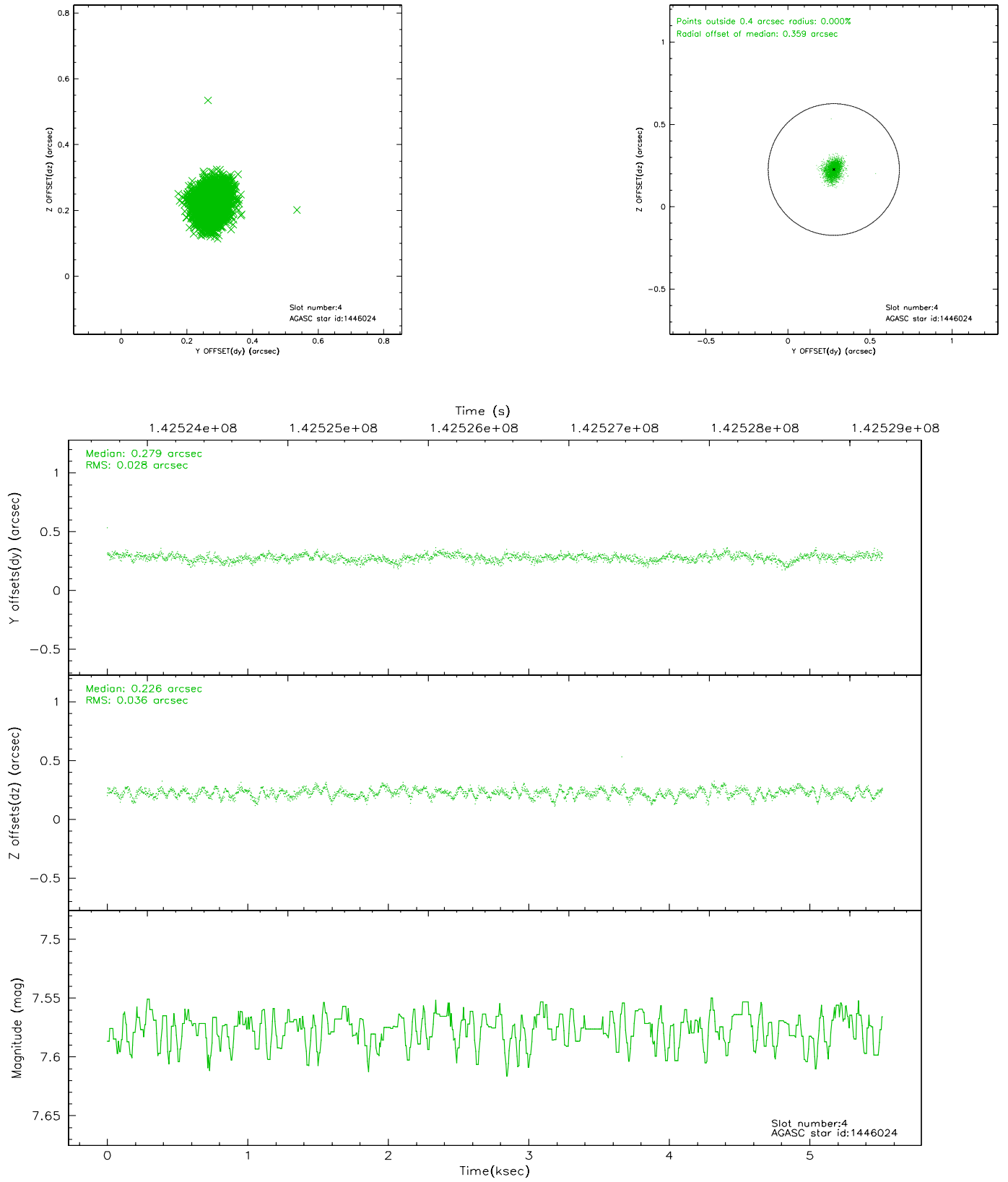
slot	status	id	mag	n_pts	med_dy	med_dz	dr1	dr2	ra	dec	mean_y	mean_z
0	FID	ACIS-S-2	7.12	1347	-0.009	0.028	0.006	0.011	0.000000	0.000000	-756.12	-1727.94
1	FID	ACIS-S-4	7.20	1347	-0.030	-0.003	0.005	0.009	0.000000	0.000000	2156.63	179.41
2	FID	ACIS-S-5	7.24	1347	0.008	-0.016	0.006	0.011	0.000000	0.000000	-1807.56	174.28
3	GUIDE	1447576	7.32	2693	-0.106	-0.098	0.056	0.087	10.509485	1.023642	1031.62	1348.14
4	GUIDE	1446024	7.58	2693	0.279	0.226	0.049	0.079	11.477410	0.579409	-1785.39	-1250.81
5	GUIDE	1451184	7.79	2693	-0.063	-0.020	0.045	0.074	10.528007	1.063449	1137.56	1231.13
6	GUIDE	1447696	8.50	2694	-0.041	-0.034	0.053	0.083	10.739939	1.292792	1606.74	209.89
7	GUIDE	1449360	8.92	2692	-0.067	-0.075	0.067	0.106	10.210501	1.173717	1945.58	2133.21

2.4 Star Slots

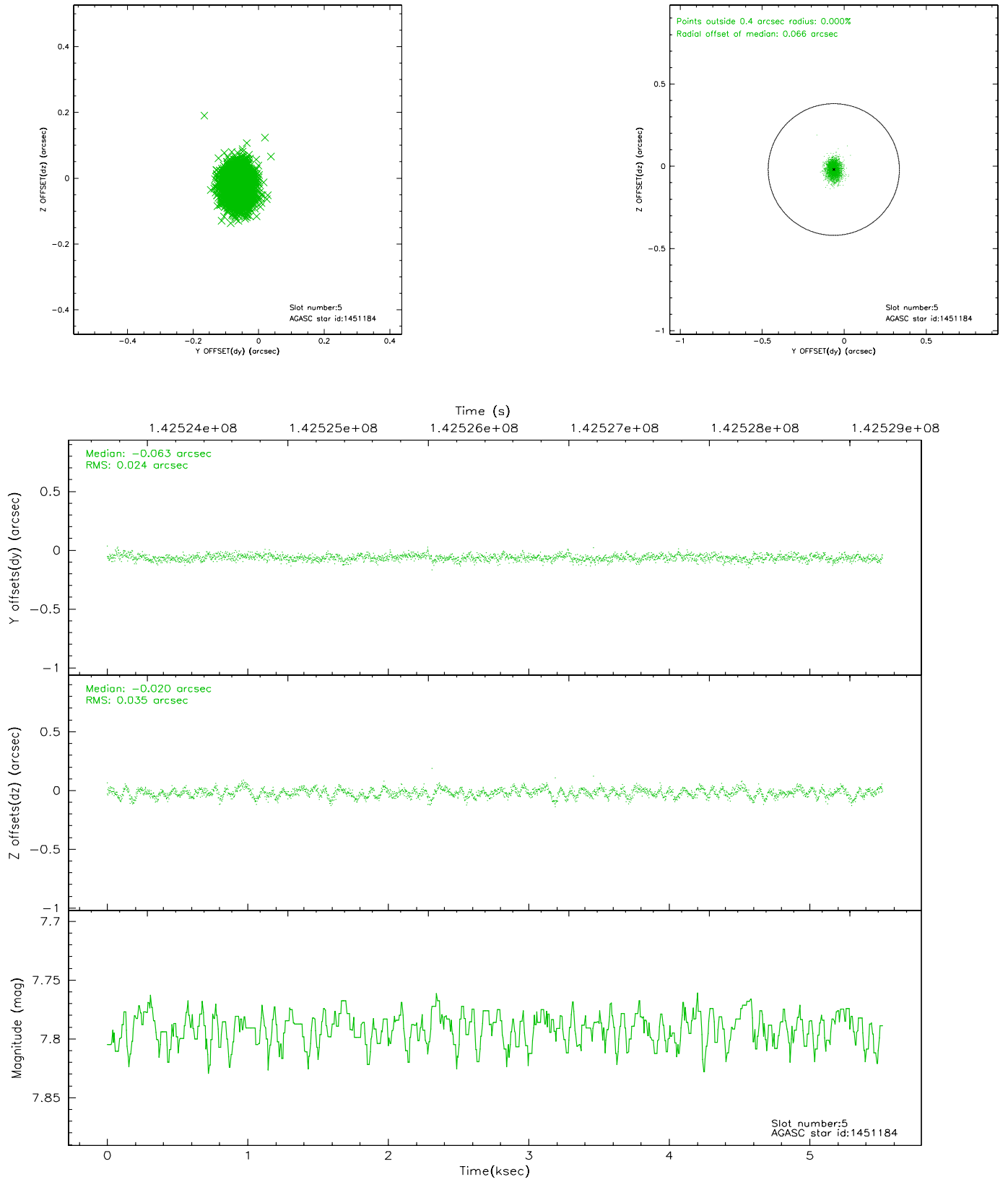
2.4.1 Slot 3



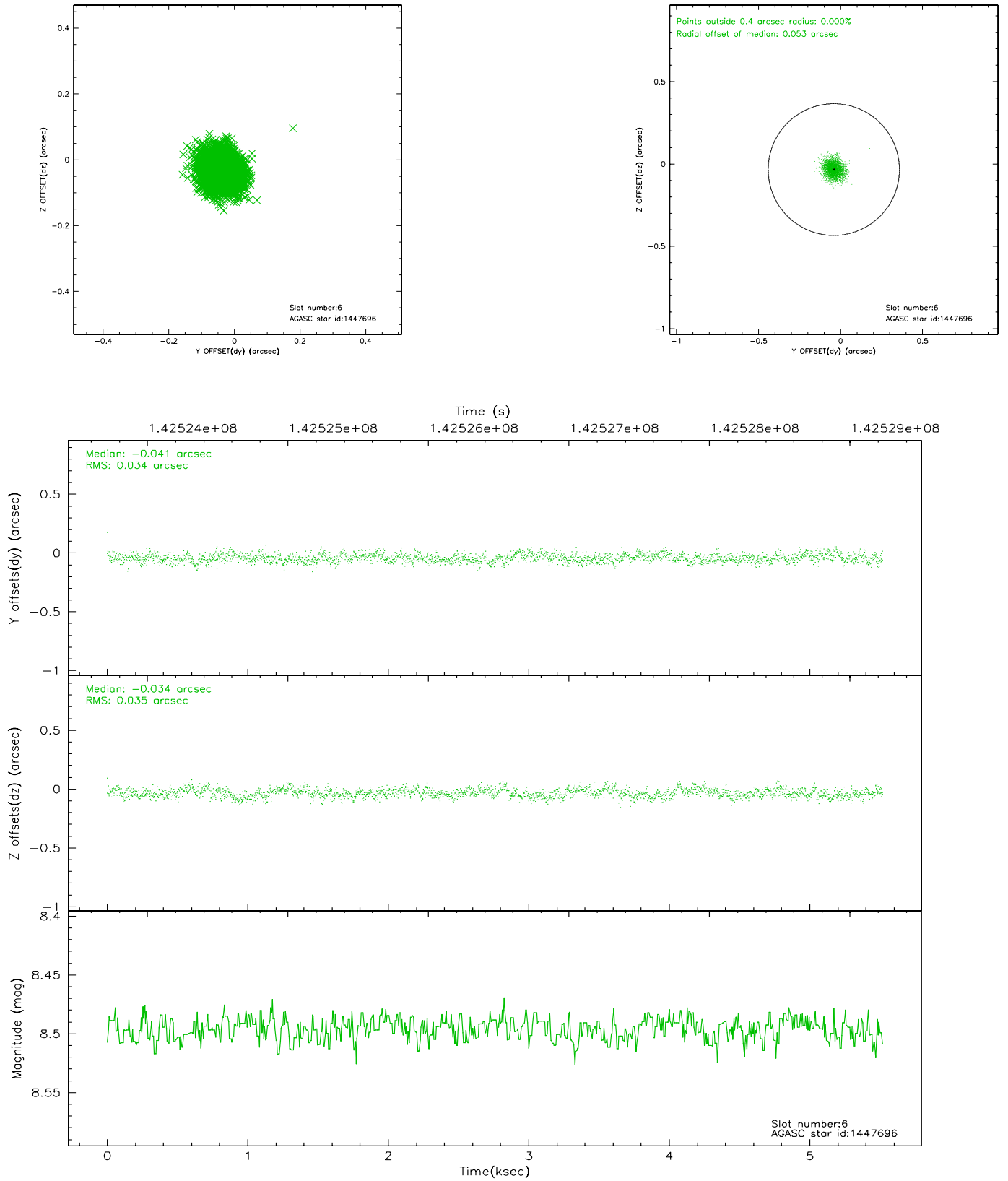
2.4.2 Slot 4



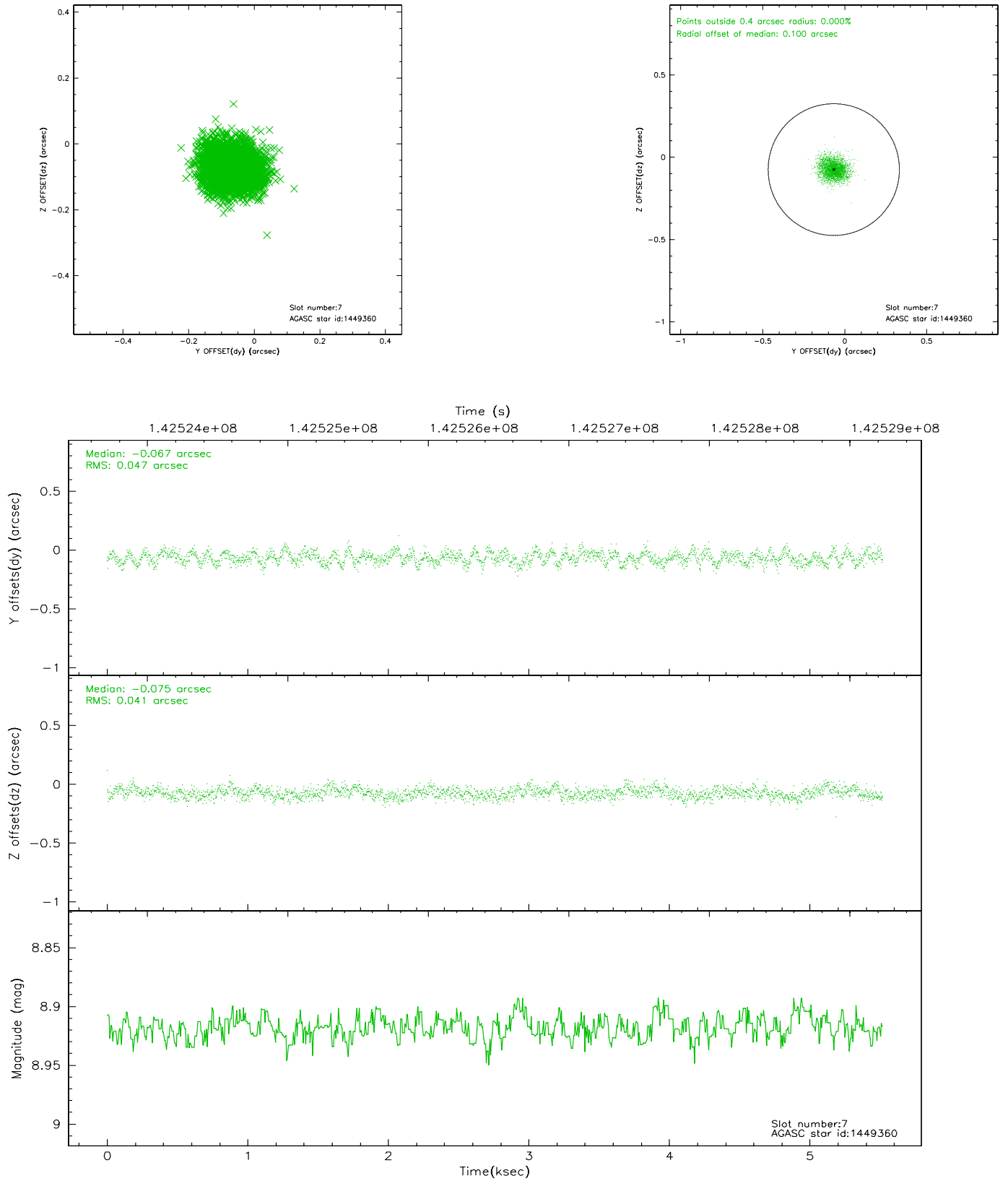
2.4.3 Slot 5



2.4.4 Slot 6

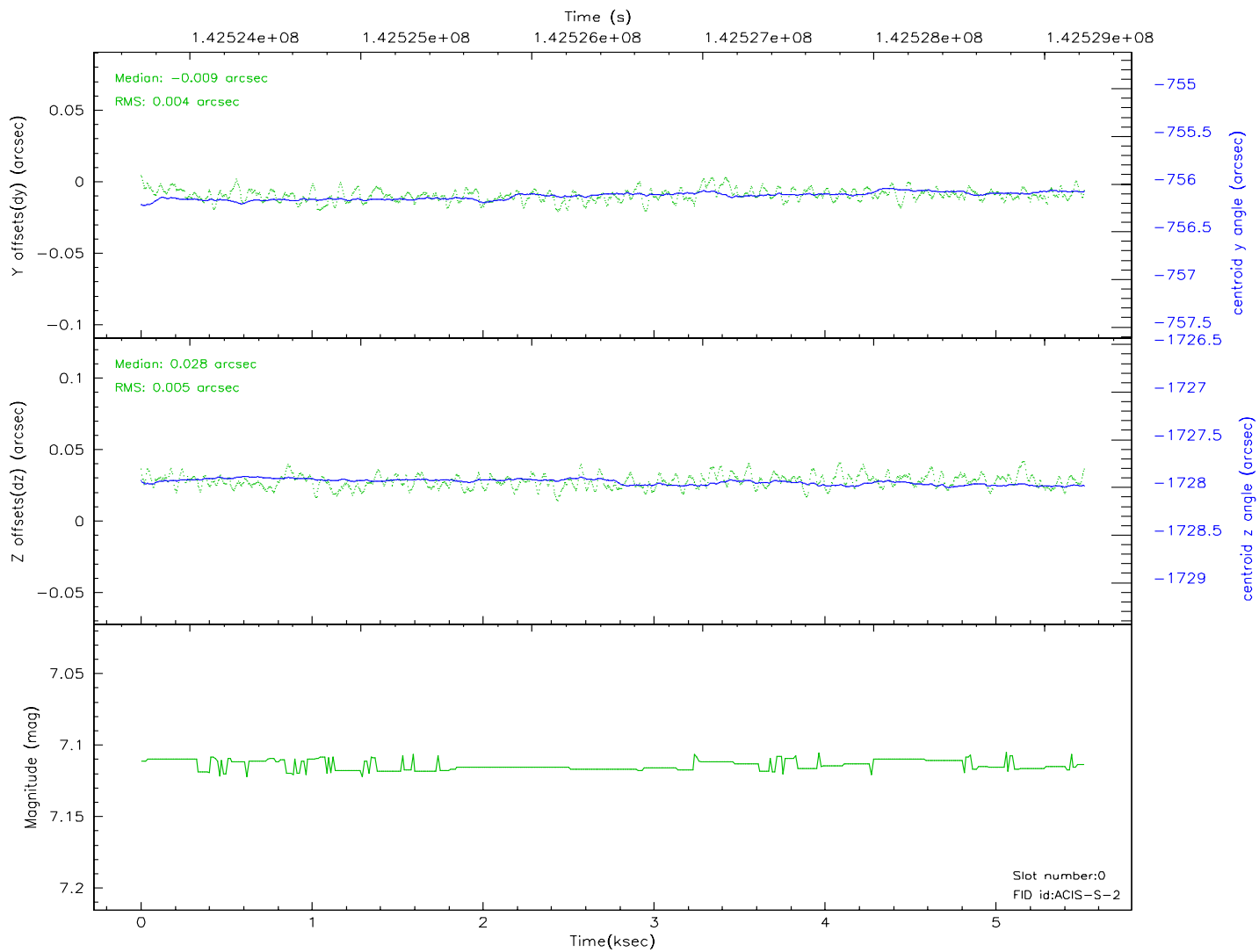
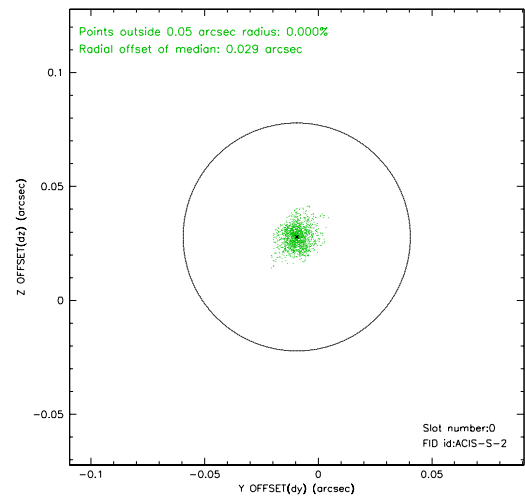
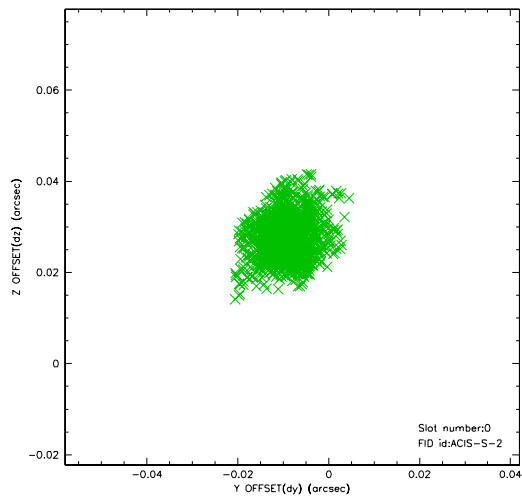


2.4.5 Slot 7

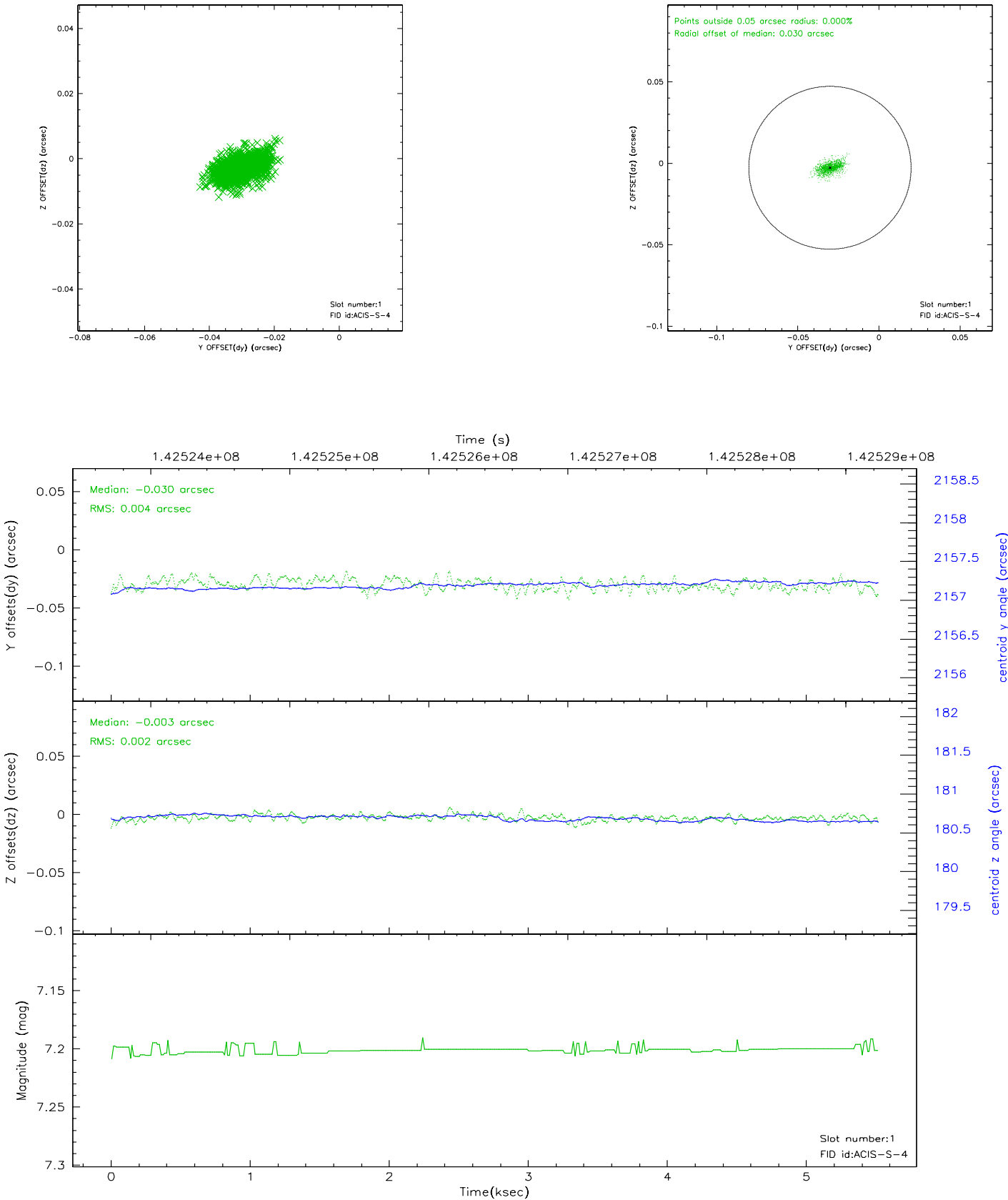


2.5 FID Slots

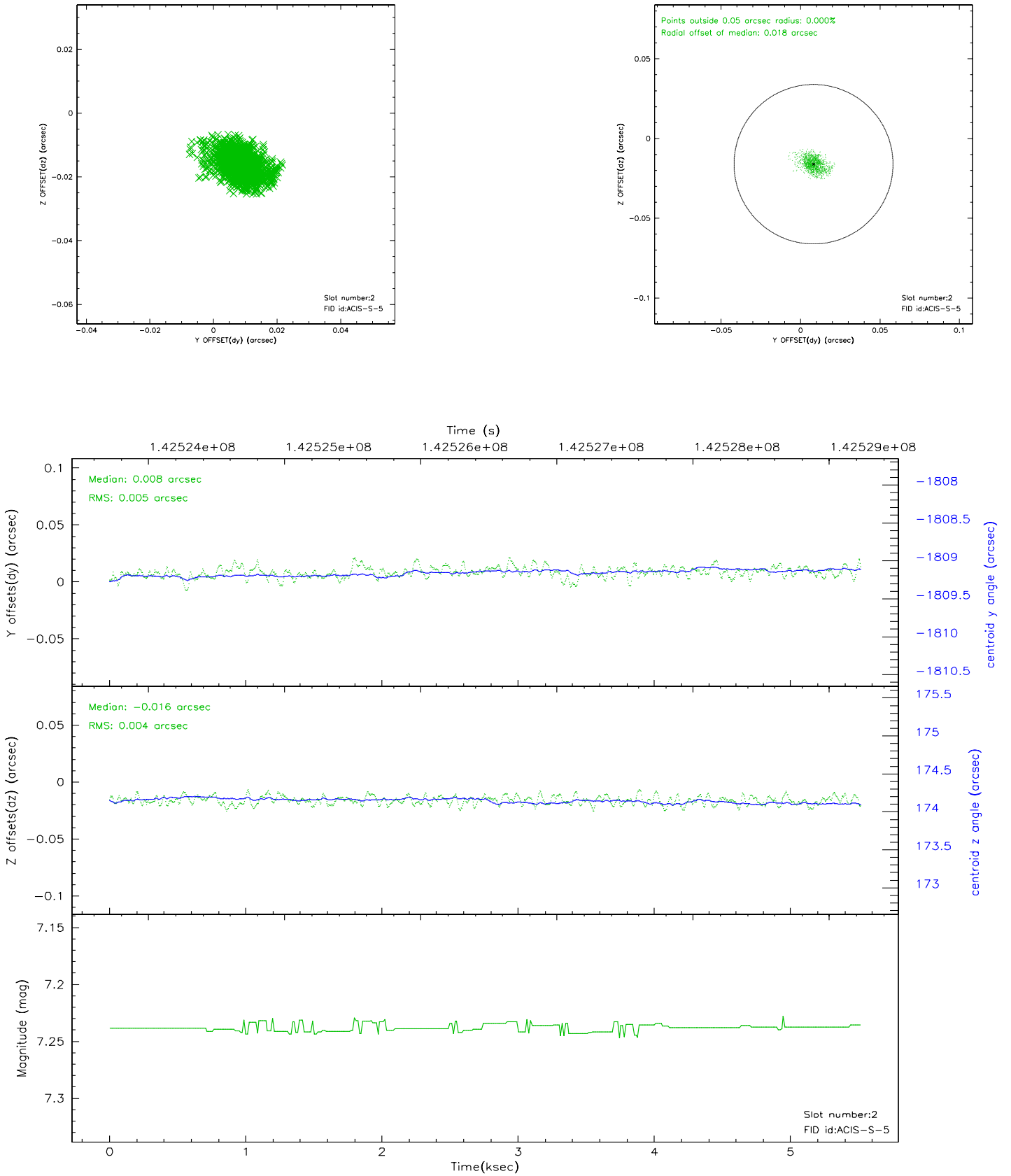
2.5.1 Slot 0



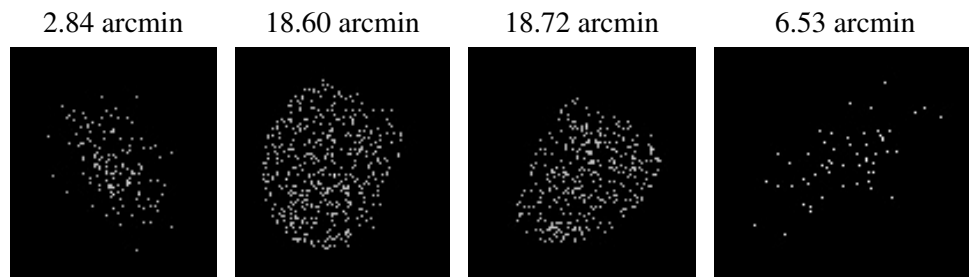
2.5.2 Slot 1



2.5.3 Slot 2



3 Point Sources



A Summary

A.1 Status

V&V Scientist	Beth Sundheim
V&V Date (YYYY-MM-DD)	2006.09.24
V&V Edition	1
V&V Disposition and Status	OK
V&V Charge Time	4.665

A.2 Comments