

V&V Reference Report

L2 ASCDS Version : 7.6.9

Observation 3283 - L2 Version 001
Chandra X-Ray Center

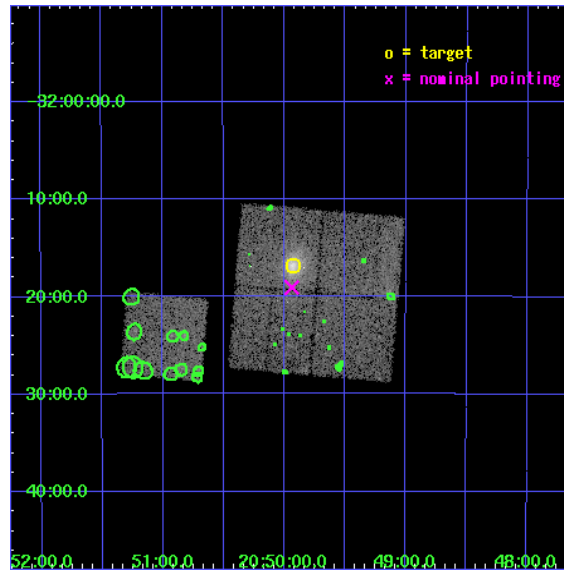
L2 Processing Date : Oct 14 2006

Contents

1	Front	2
2	OBI	3
2.1	OBI	3
2.1.1	Images	3
2.1.2	Bias	3
2.1.3	Parameters	4
2.1.4	Events	4
2.2	Compared Parameters	5
2.3	Aspect	6
2.4	Star Slots	9
2.4.1	Slot 3	9
2.4.2	Slot 4	10
2.4.3	Slot 5	11
2.4.4	Slot 6	12
2.4.5	Slot 7	13
2.5	FID Slots	14
2.5.1	Slot 0	14
2.5.2	Slot 1	15
2.5.3	Slot 2	16
3	Point Sources	17
A	Summary	18
A.1	Status	18
A.2	Comments	18

1 Front

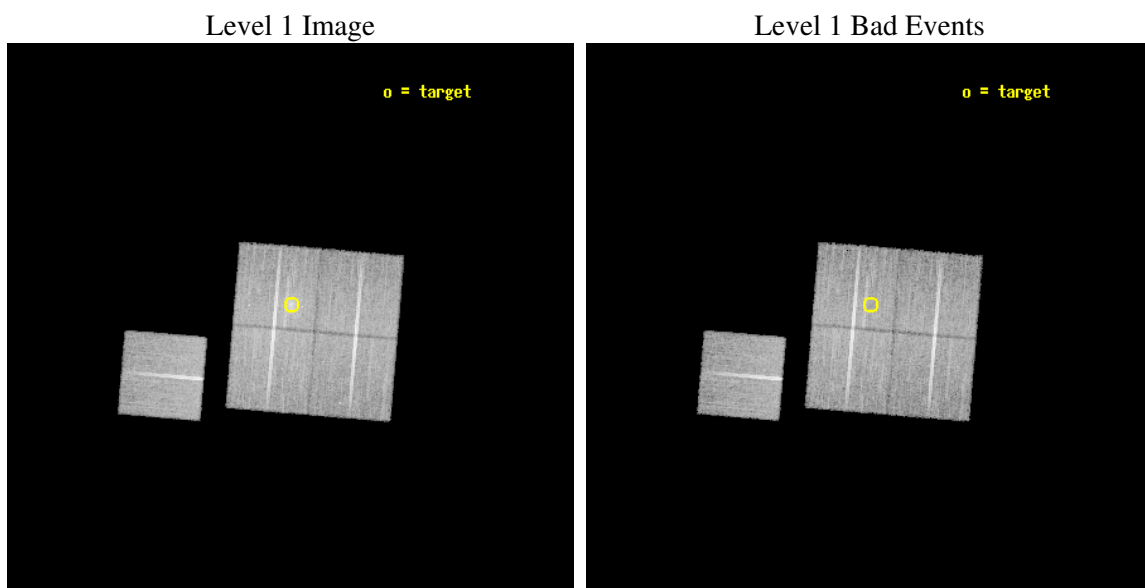
seq_num	800283
obs_id	3283
title	MACS: THE X-RAY PROPERTIES OF THE MOST MASSIVE GALAXY CLUSTERS AT $Z>0.3$
observer	Dr Harald Ebeling
object	MACSJ2049.9-3217
dtcycle	0
cycle	P
ra_targ	312.482917
dec_targ	-32.280278
ra_nom	312.48443504586
dec_nom	-32.317891261328
roll_nom	274.8674569954
revision	2
ontime	24114.858933538
livetime	23799.780548471
ontime0	24114.858983427
ontime1	24111.718003213
ontime2	24111.718082964
ontime3	24114.858933538
ontime6	24111.718003273
l2events	60508



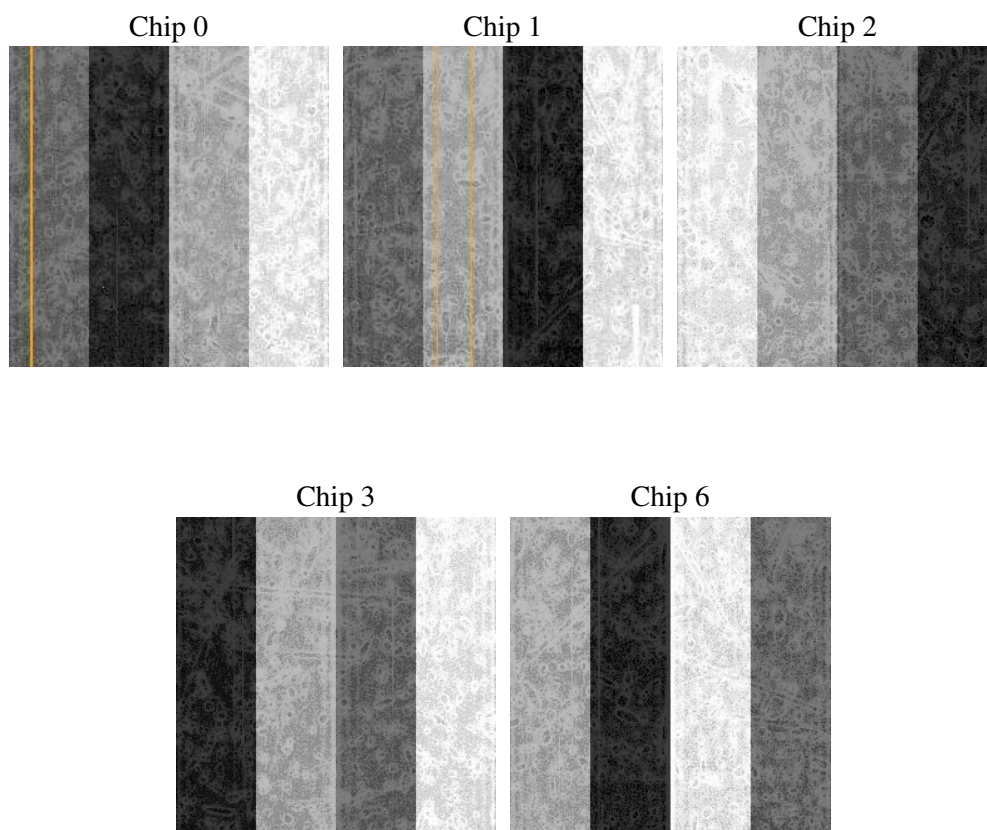
2 OBI

2.1 OBI

2.1.1 Images



2.1.2 Bias



2.1.3 Parameters

obi_num	1
ascdsver	7.6.9
caldbver	3.2.3
date	2006-10-14T21:14:35
revision	2

sched_exp_time	24000.000000
ontime	24119.74020645
ontime0	24119.740256339
ontime1	24116.599276125
ontime2	24116.599335968
ontime3	24119.74020645
ontime6	24116.599276185
l1events	620876

2.1.4 Events

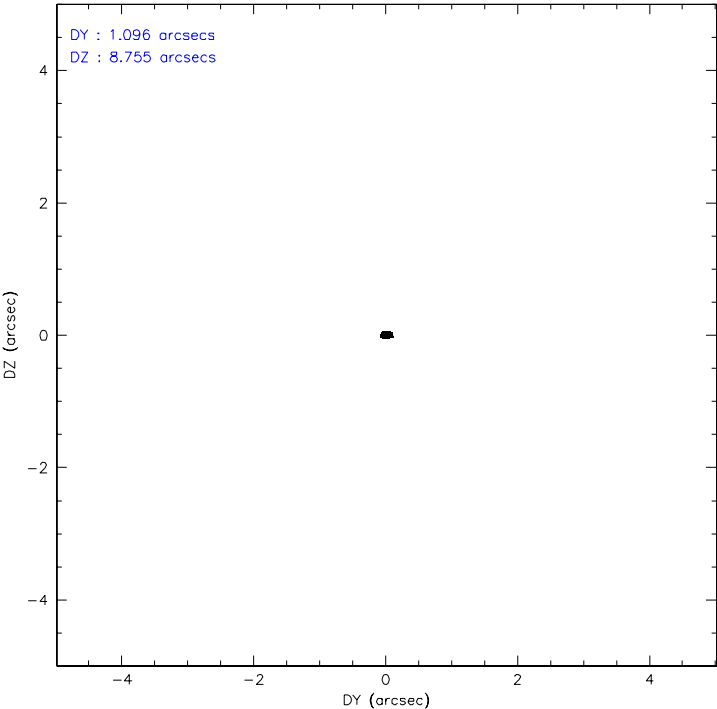
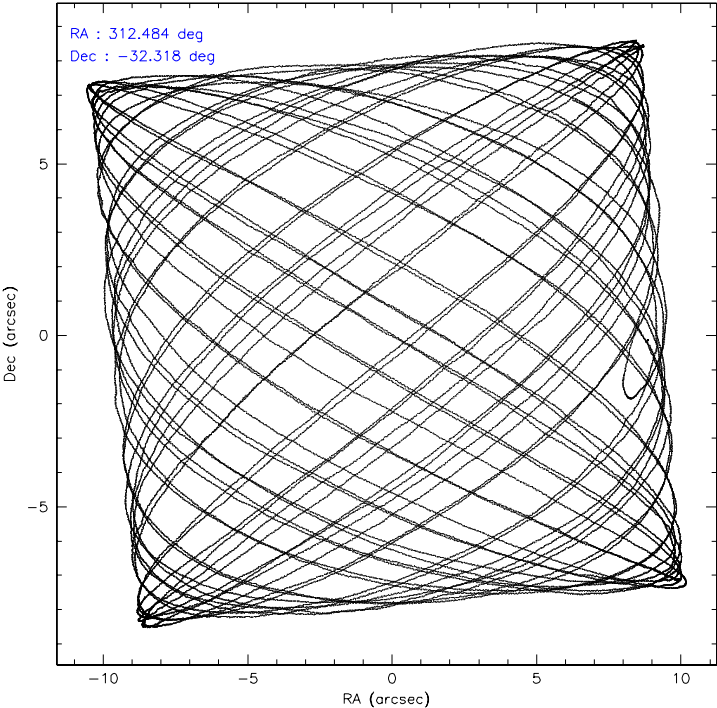
	ccd 0	ccd 1	ccd 2	ccd 3	ccd 6
level 1 events	114924	116492	131365	132133	125962
rejected events	102302	102571	118628	112910	112974
rejected %	89%	88%	90%	85%	89%

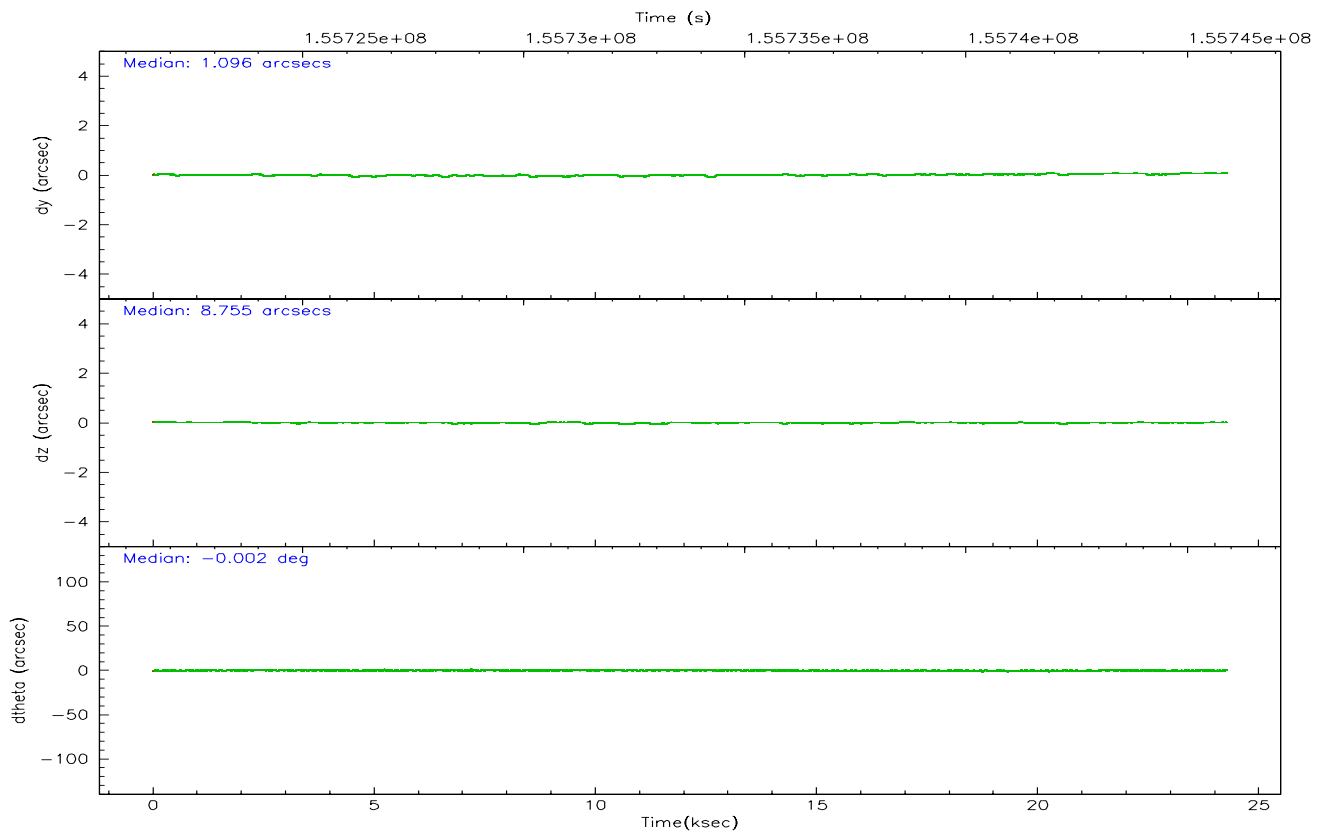
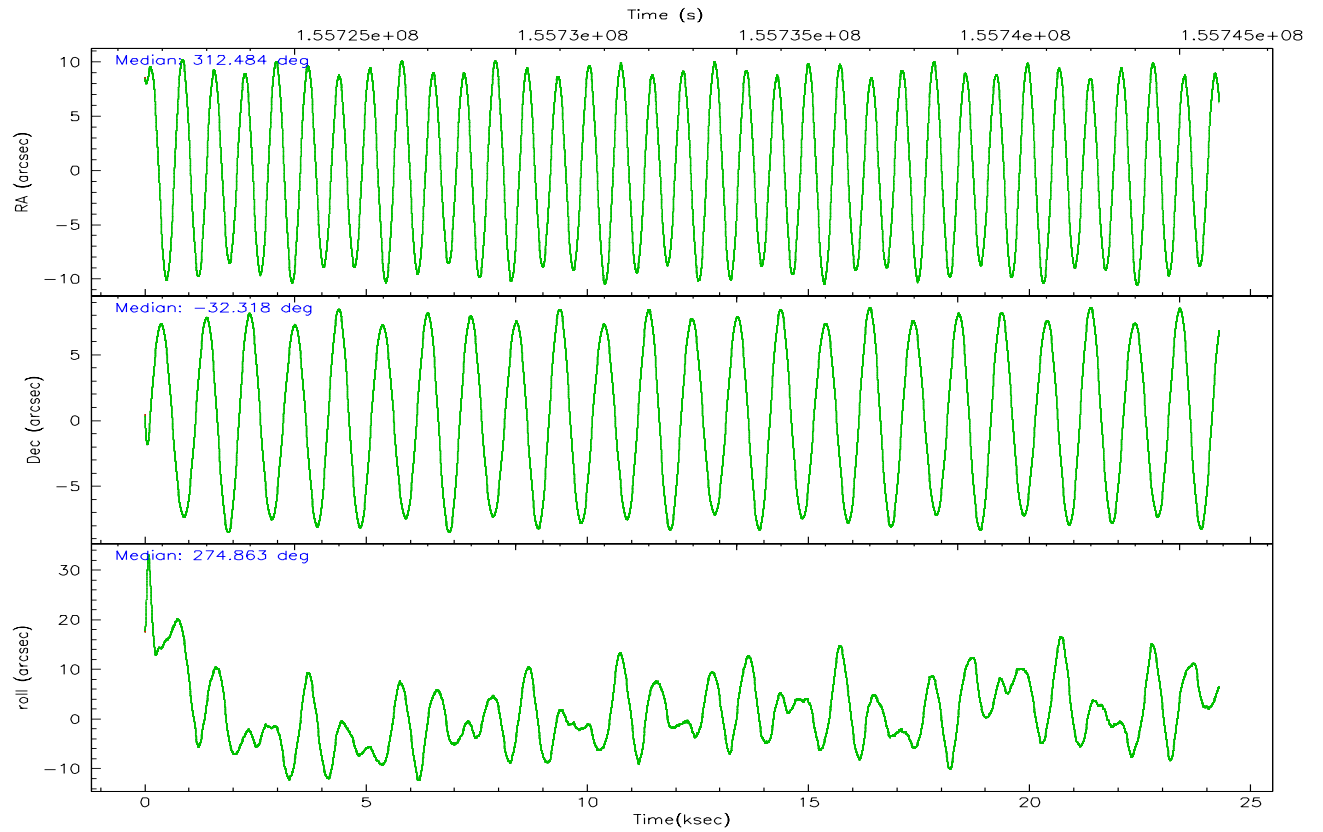
	ccd 0	ccd 1	ccd 2	ccd 3	ccd 6
grade 0 events	4579	5131	4865	10448	4656
	3%	4%	3%	7%	3%
grade 1 events	56	57	66	83	48
	0%	0%	0%	0%	0%
grade 2 events	2805	2864	2822	3181	2768
	2%	2%	2%	2%	2%
grade 3 events	1476	1587	1360	1608	1514
	1%	1%	1%	1%	1%
grade 4 events	1395	1558	1397	1601	1401
	1%	1%	1%	1%	1%
grade 5 events	4263	4532	4072	4762	4715
	3%	3%	3%	3%	3%
grade 6 events	2368	2783	2294	2392	2650
	2%	2%	1%	1%	2%
grade 7 events	97982	97980	114489	108058	108210
	85%	84%	87%	81%	85%

2.2 Compared Parameters

Parameter	Planned	Actual	Parameter	Planned	Actual
Instrument	ACIS	ACIS	Obspar format version number	6	6
Detector	ACIS-01236	ACIS-01236	Obspar file type	PREDICTED	ACTUAL
Grating	NONE	NONE	Obspar update status	NONE	UPDATED
Data mode	VFAINT	VFAINT	Number of optional ACIS chips dropped	0	0
Observation mode	POINTING	POINTING	On-chip summing requested	N	N
Pointing RA	312.465791	312.4844350458583	Subarray requested	NONE	NONE
Pointing Dec	-32.295502	-32.31789126132794	Alternating exposures requested	N	N
Pointing Roll	274.648818	274.8674569953953	Primary exposure time	0.000000	3.1
SIM focus pos (mm)	-0.782348	-0.7809083437167272			
SIM defocus (mm)	0	0.001439871863259334			
SIM translation stage pos (mm)	-227.742463	-227.734108438797			
SIM translation stage offset (mm)	-5.85	-5.858344564132665			
Observation start time	155721902.184000	155720892.63189			
Observation start date	2002-12-08T08:03:58	2002-12-08T07:48:12			
Observation end time	155745902.184000	155746691.88297			
Observation end date	2002-12-08T14:43:58	2002-12-08T14:58:11			
Read mode	TIMED	TIMED			

2.3 Aspect



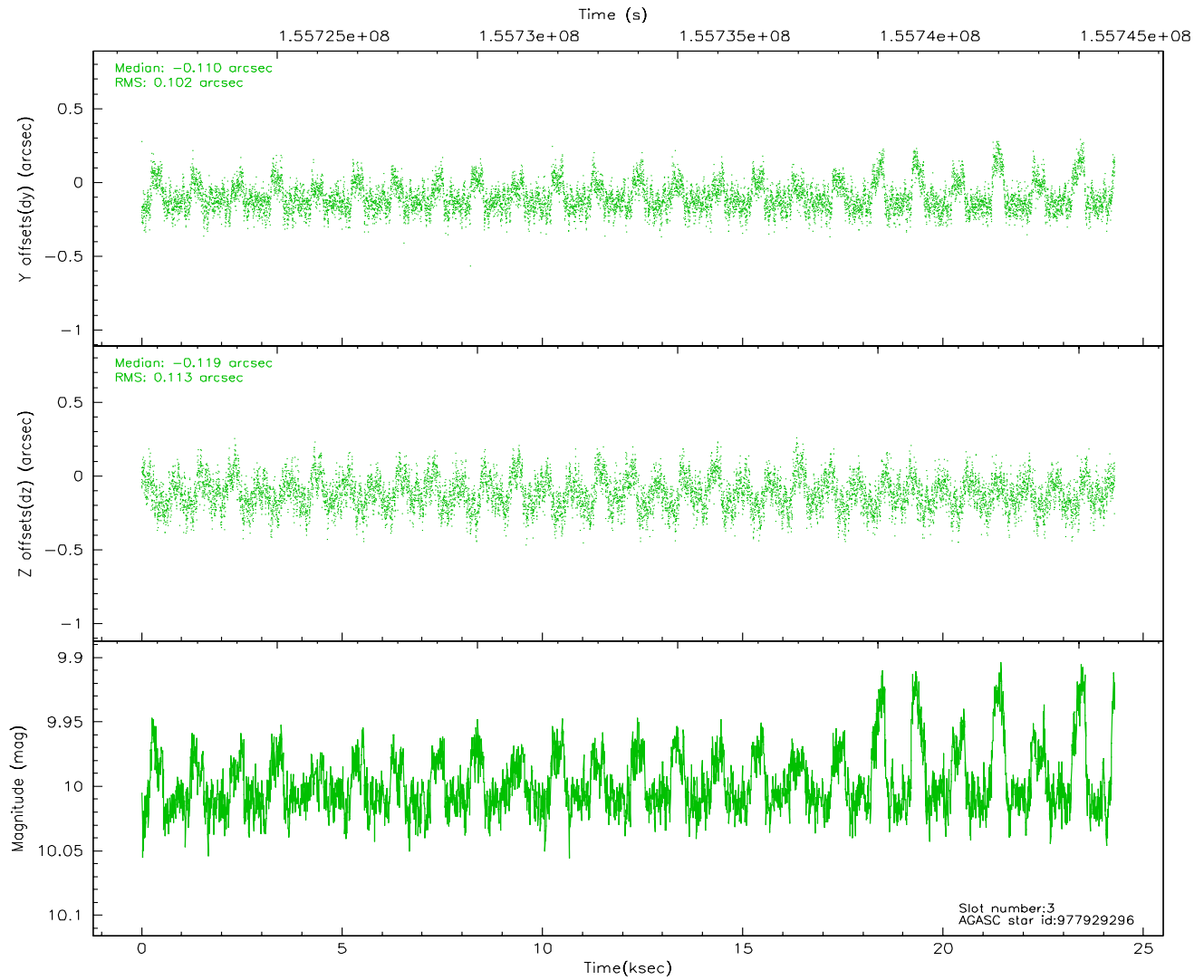
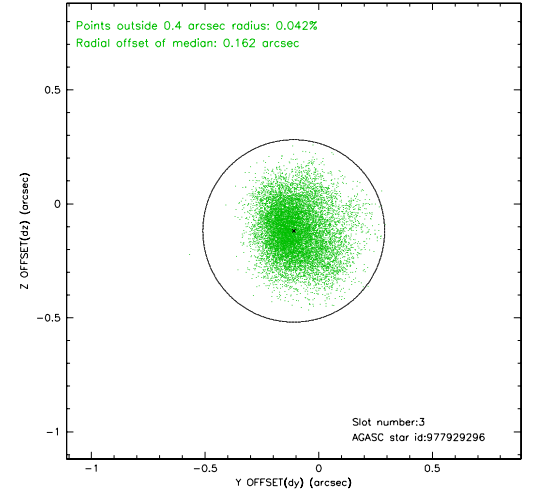
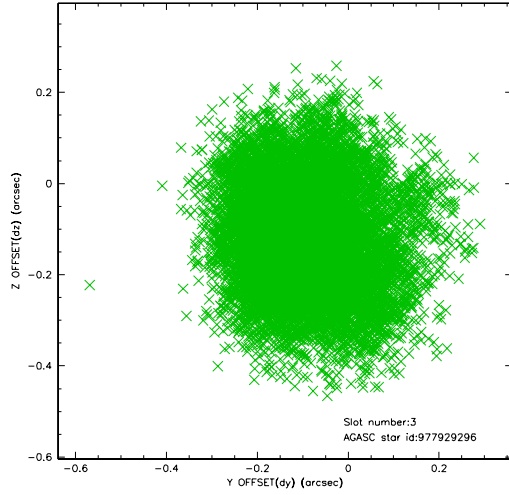


Slot Statistics

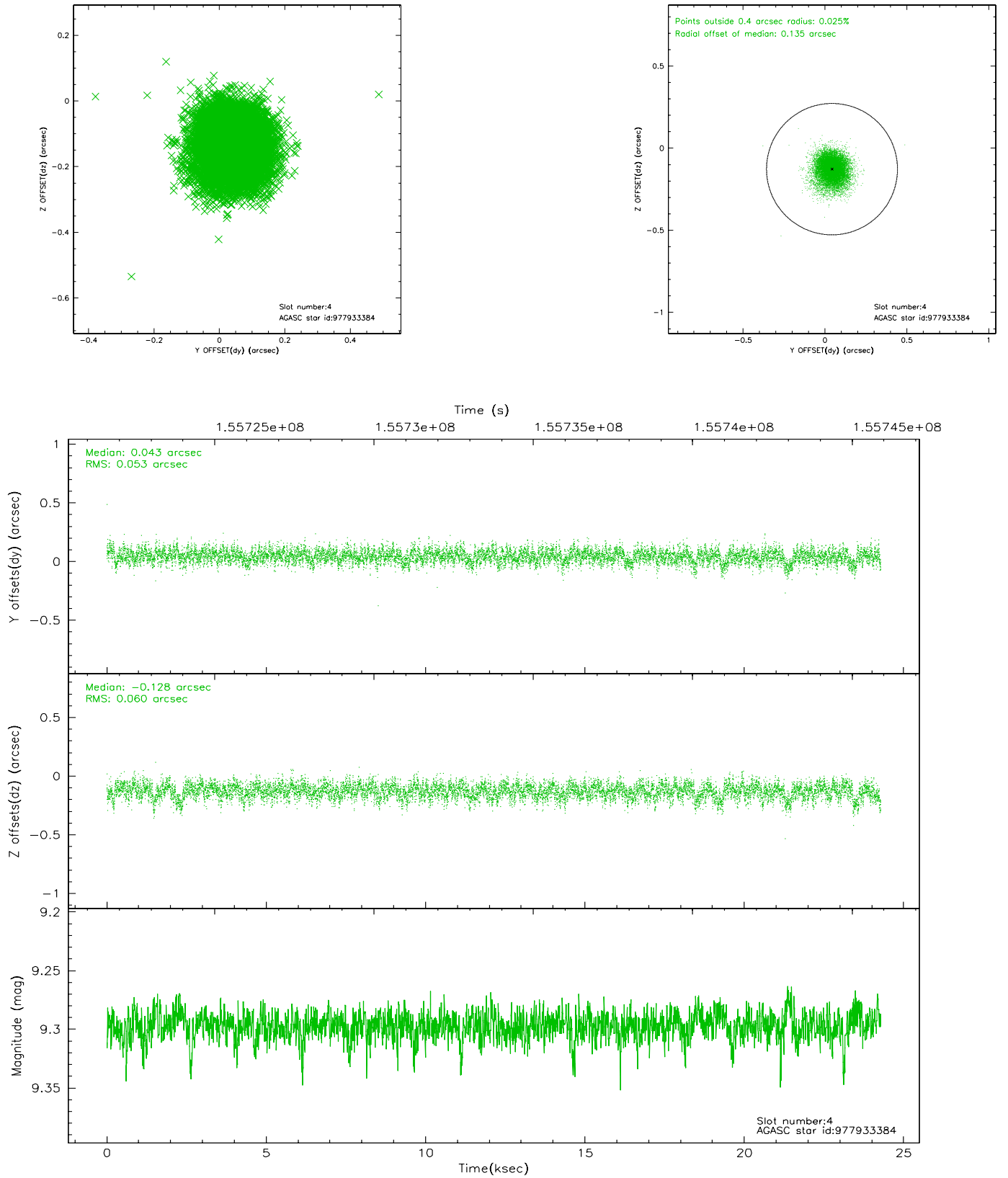
slot	status	id	mag	n_pts	med_dy	med_dz	dr1	dr2	ra	dec	mean_y	mean_z
0	FID	ACIS-I-1	7.24	5923	0.012	0.025	0.006	0.010	0.000000	0.000000	938.64	-952.42
1	FID	ACIS-I-5	7.24	5923	-0.131	0.044	0.007	0.011	0.000000	0.000000	-1809.53	945.02
2	FID	ACIS-I-6	7.26	5923	0.028	0.001	0.008	0.013	0.000000	0.000000	404.08	1589.62
3	GUIDE	977929296	10.00	11811	-0.110	-0.119	0.161	0.266	311.692079	-31.909619	-1567.29	-2244.63
4	GUIDE	977933384	9.30	11840	0.043	-0.128	0.083	0.141	311.943152	-32.559926	824.60	-1657.93
5	GUIDE	978060760	9.36	11844	0.112	0.157	0.100	0.158	312.956910	-32.611979	1260.19	1392.27
6	GUIDE	978062128	9.77	11829	0.093	0.145	0.116	0.188	312.915446	-32.136983	-454.23	1412.94
7	GUIDE	977416456	7.15	11844	-0.153	-0.057	0.054	0.091	312.662713	-31.725622	-1995.07	767.66

2.4 Star Slots

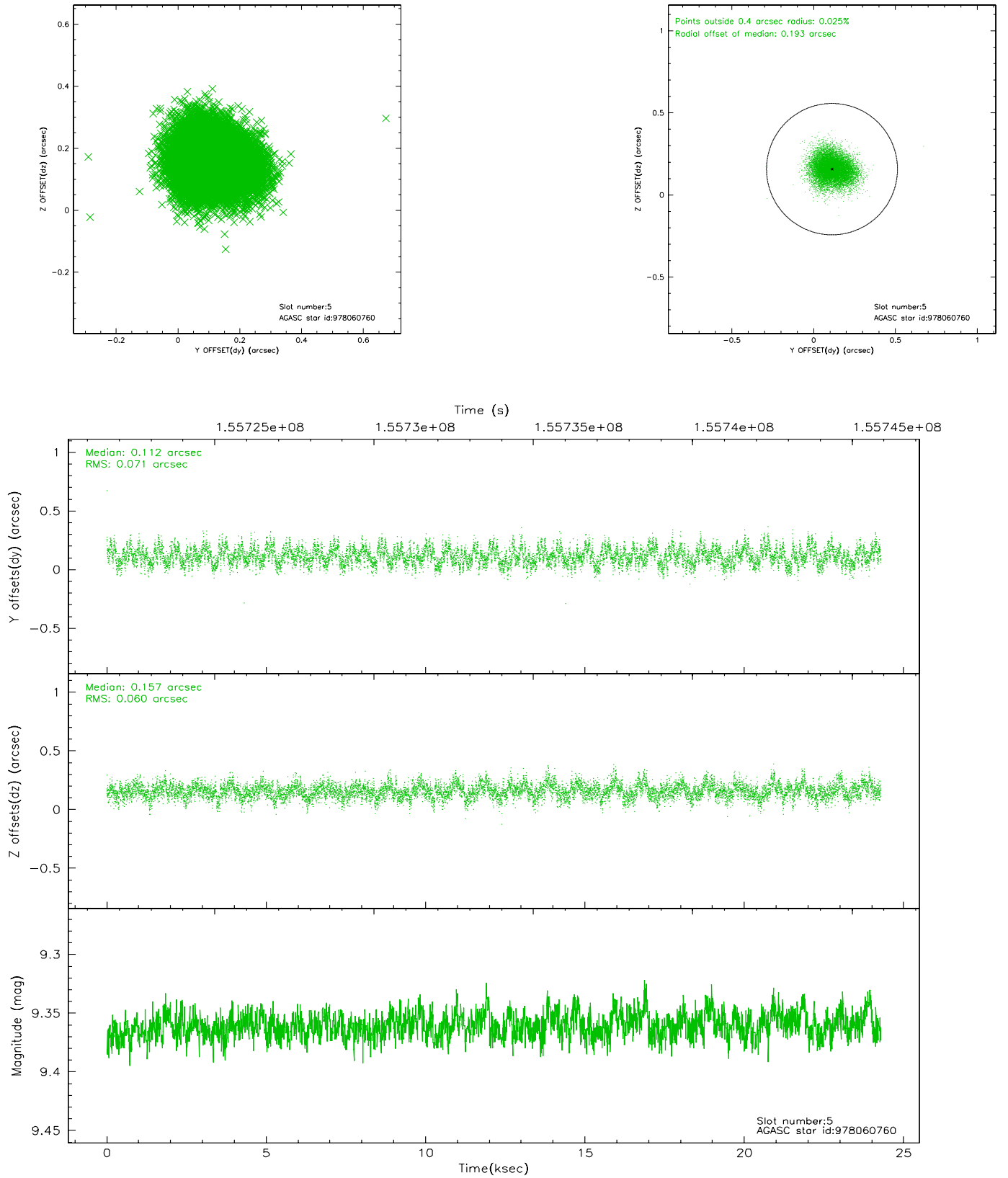
2.4.1 Slot 3



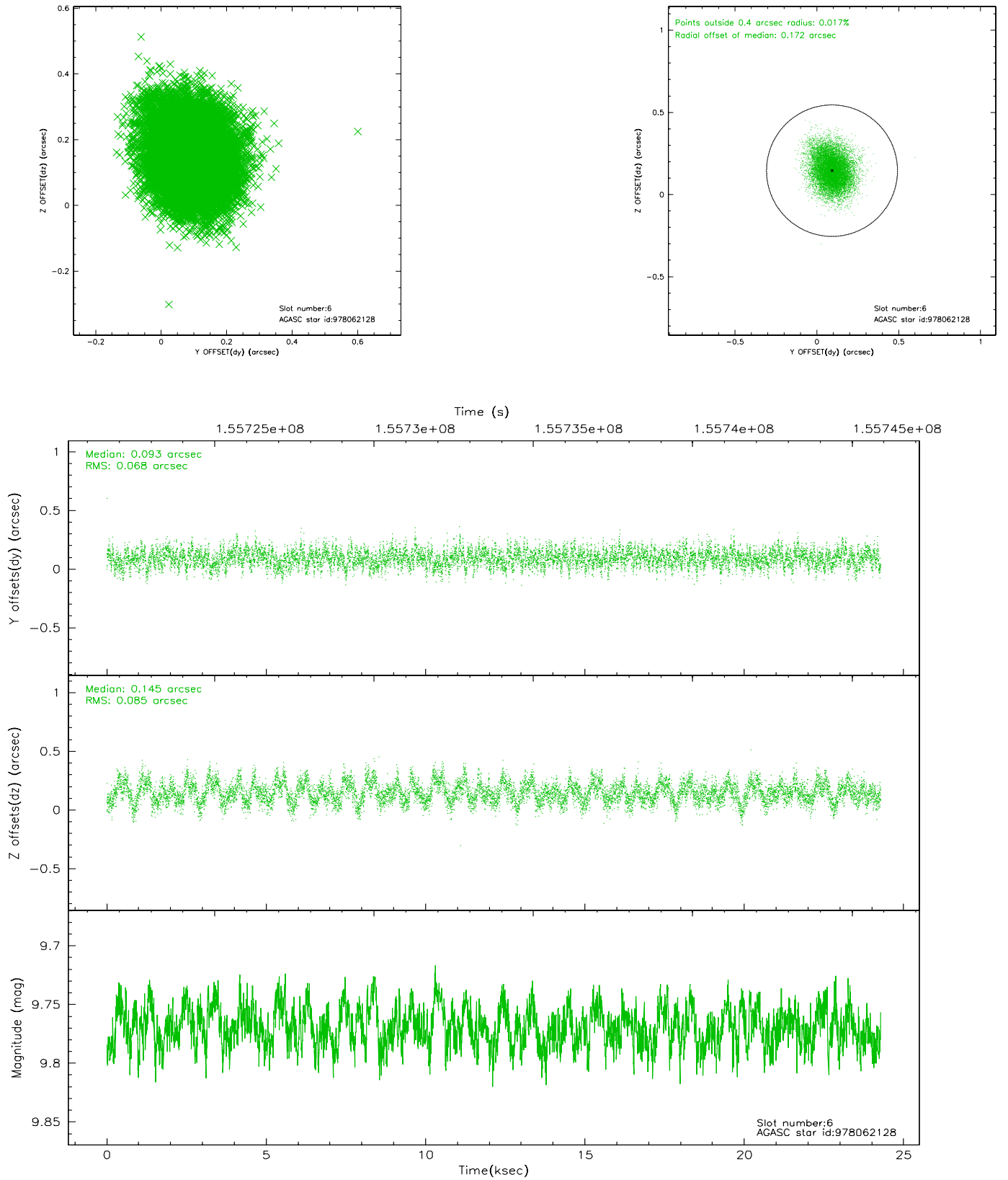
2.4.2 Slot 4



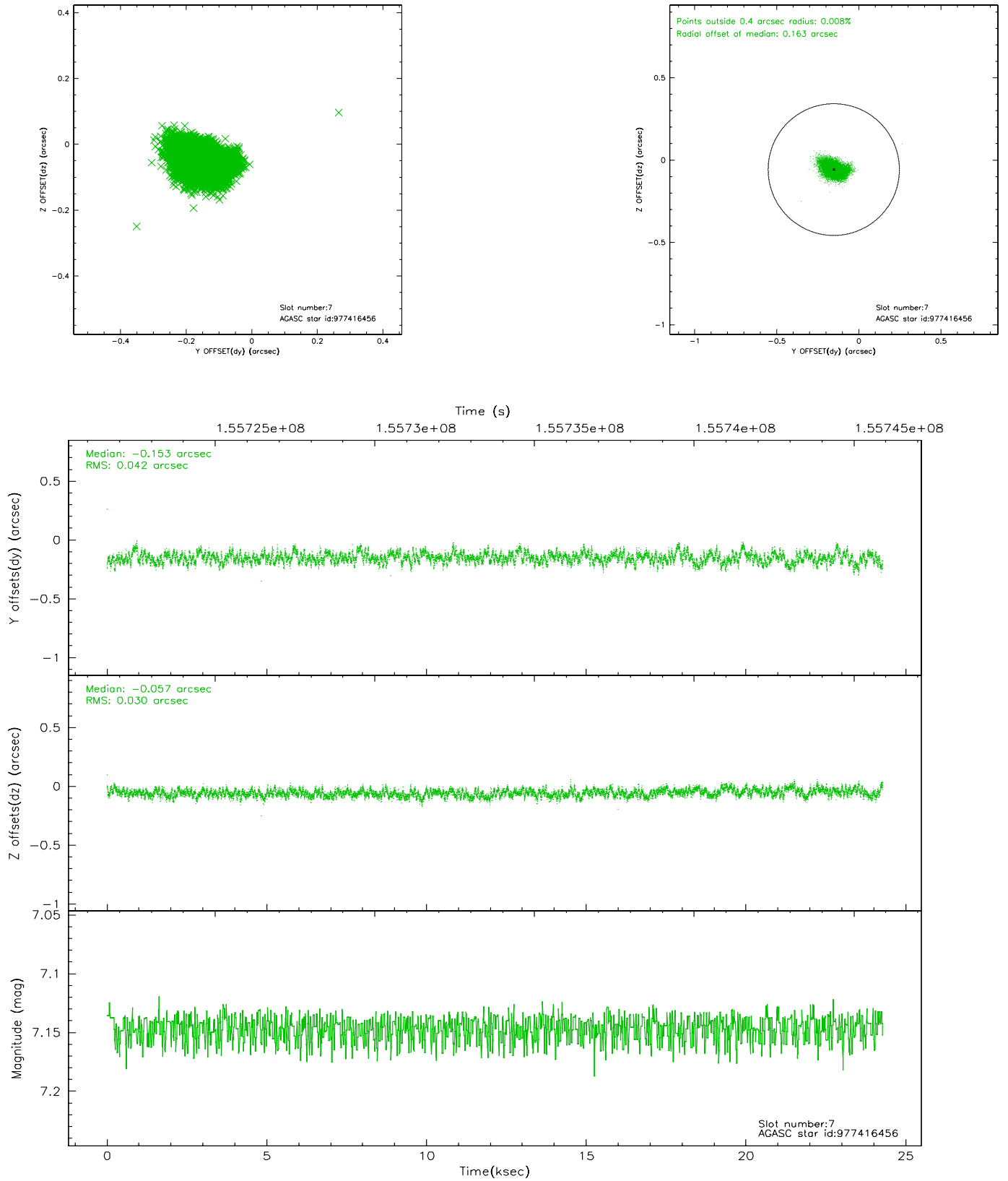
2.4.3 Slot 5



2.4.4 Slot 6

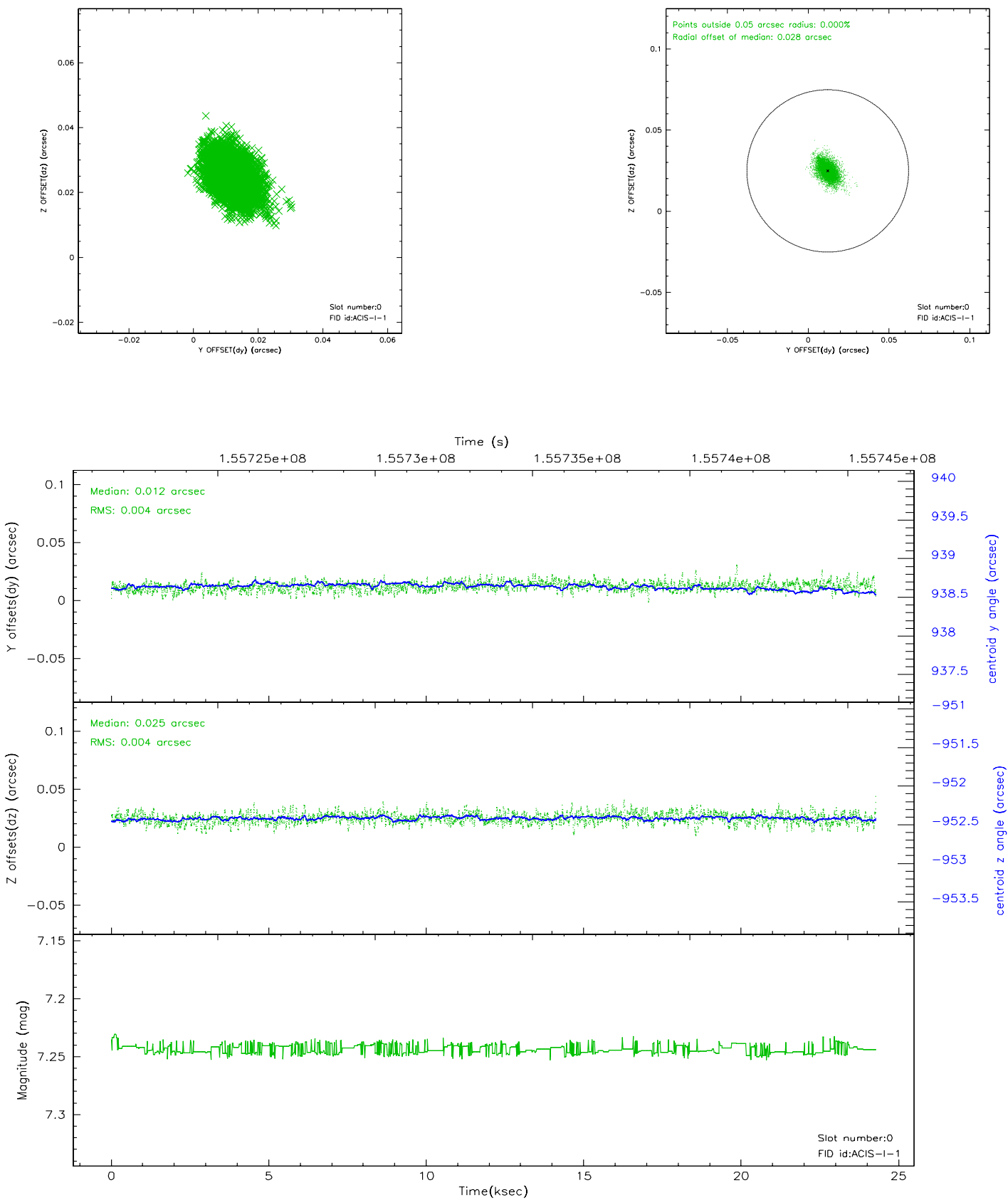


2.4.5 Slot 7

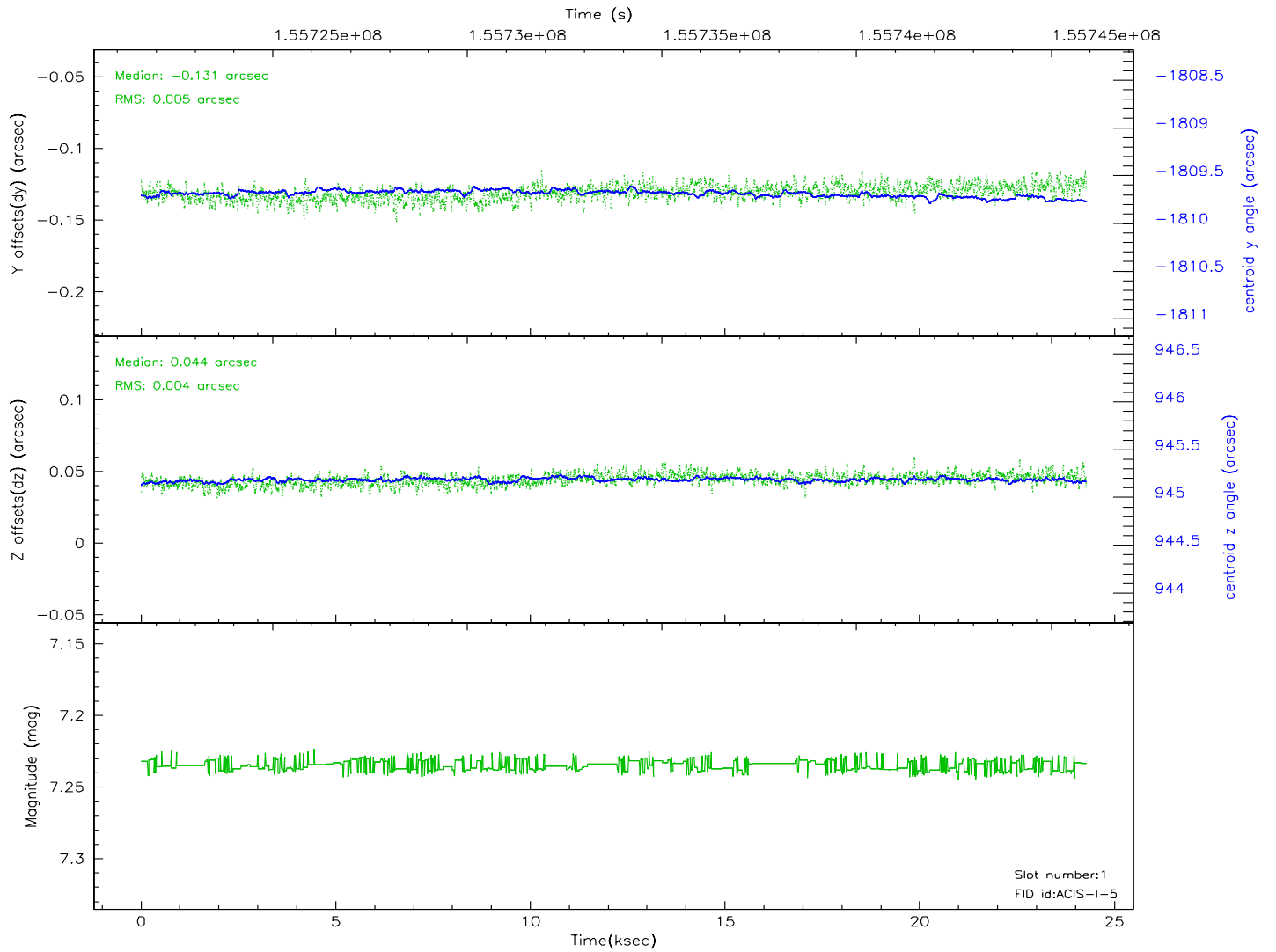
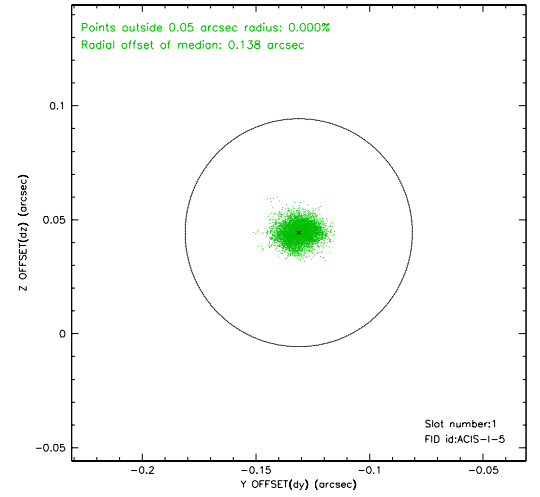
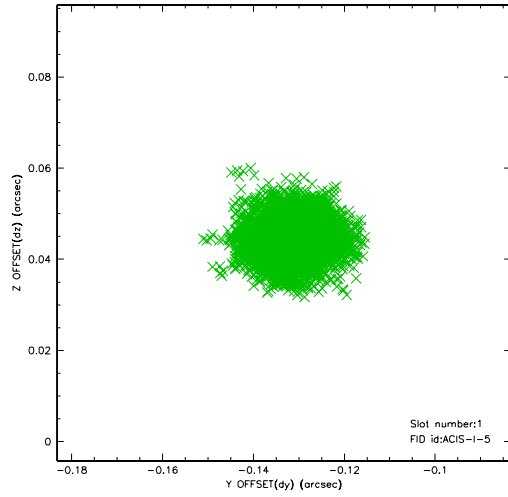


2.5 FID Slots

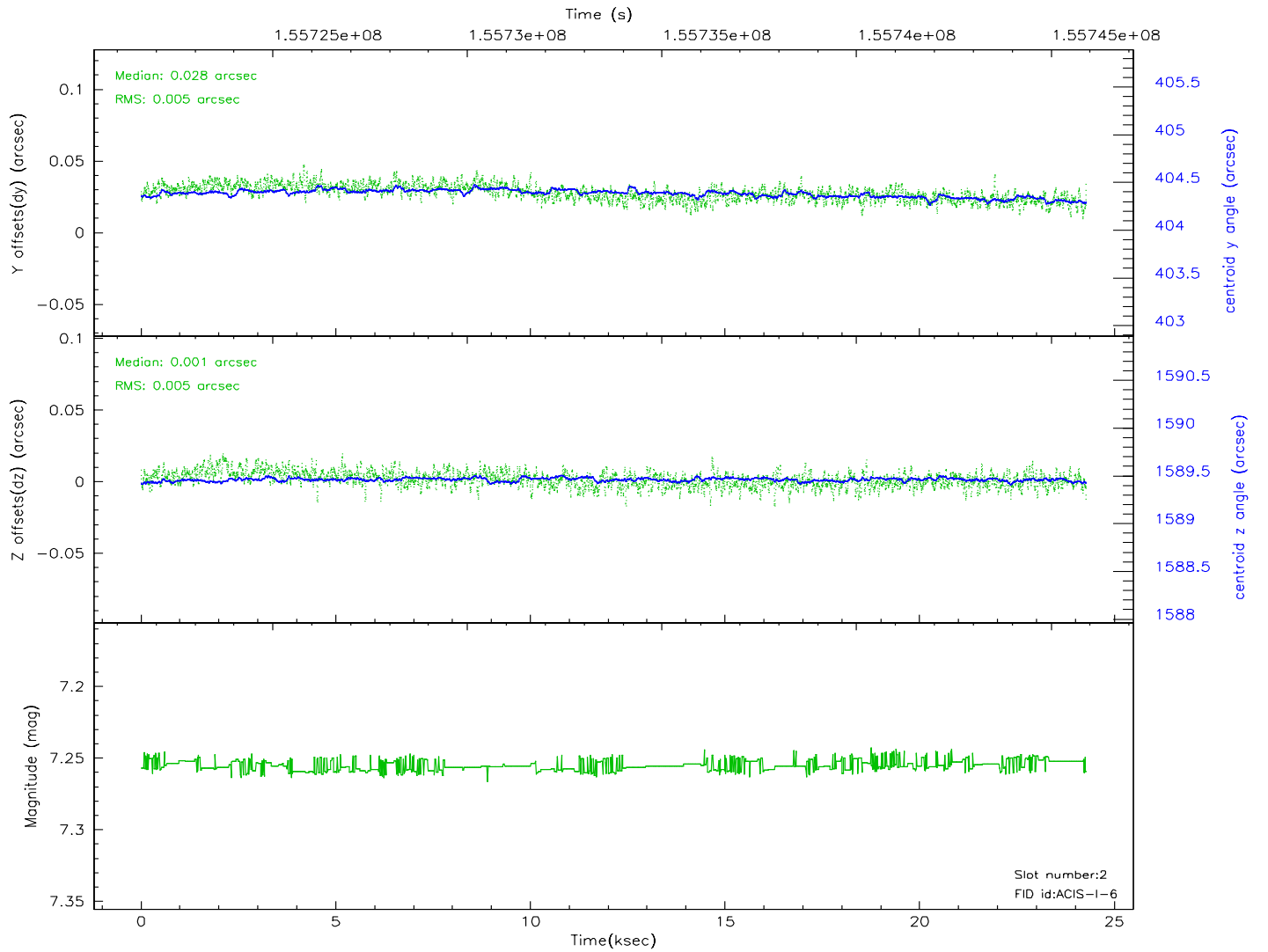
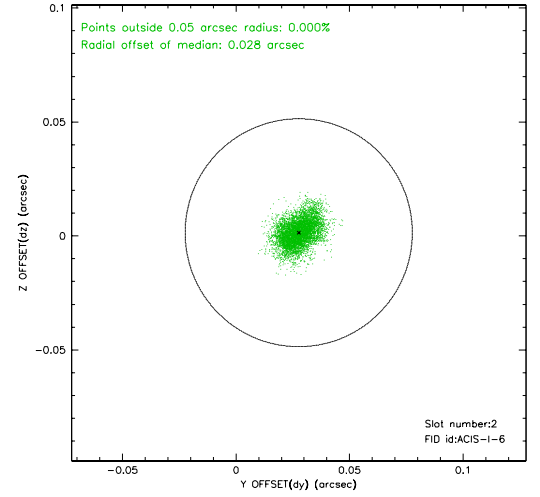
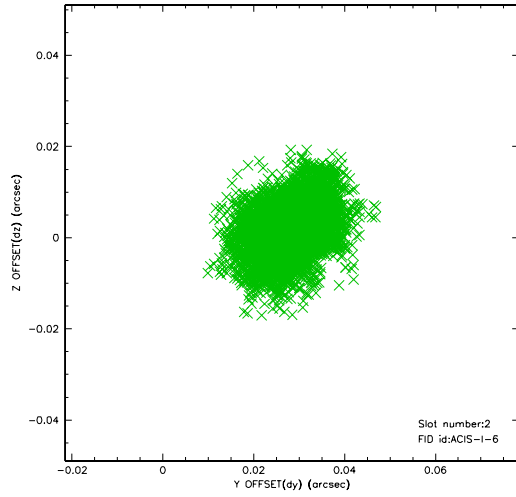
2.5.1 Slot 0



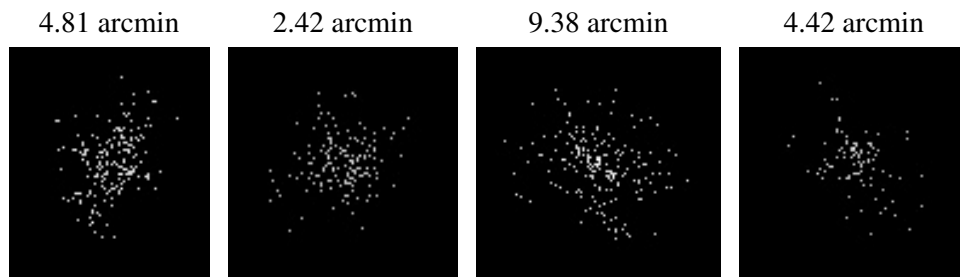
2.5.2 Slot 1



2.5.3 Slot 2



3 Point Sources



A Summary

A.1 Status

V&V Scientist	Beth Sundheim
V&V Date (YYYY-MM-DD)	2006.10.15
V&V Edition	1
V&V Disposition and Status	OK
V&V Charge Time	24.114

A.2 Comments