

V&V Reference Report

L2 ASCDS Version : 7.6.9

Observation 3281 - L2 Version 001
Chandra X-Ray Center

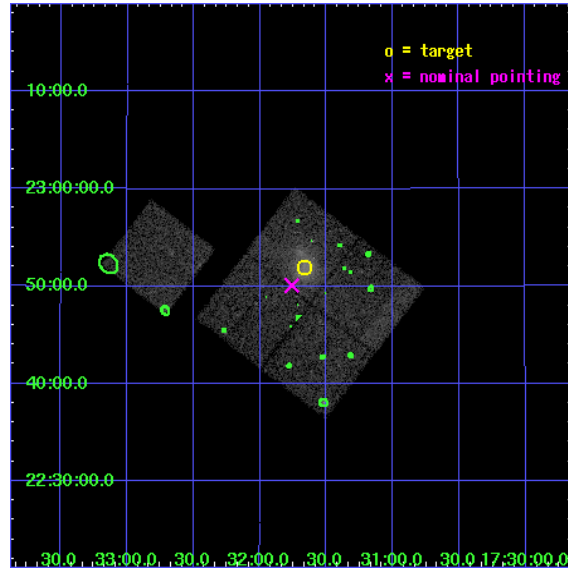
L2 Processing Date : Oct 11 2006

Contents

1	Front	2
2	OBI	3
2.1	OBI	3
2.1.1	Images	3
2.1.2	Bias	3
2.1.3	Parameters	4
2.1.4	Events	4
2.2	Compared Parameters	5
2.3	Aspect	6
2.4	Star Slots	9
2.4.1	Slot 3	9
2.4.2	Slot 4	10
2.4.3	Slot 5	11
2.4.4	Slot 6	12
2.4.5	Slot 7	13
2.5	FID Slots	14
2.5.1	Slot 0	14
2.5.2	Slot 1	15
2.5.3	Slot 2	16
3	Point Sources	17
A	Summary	18
A.1	Status	18
A.2	Comments	18

1 Front

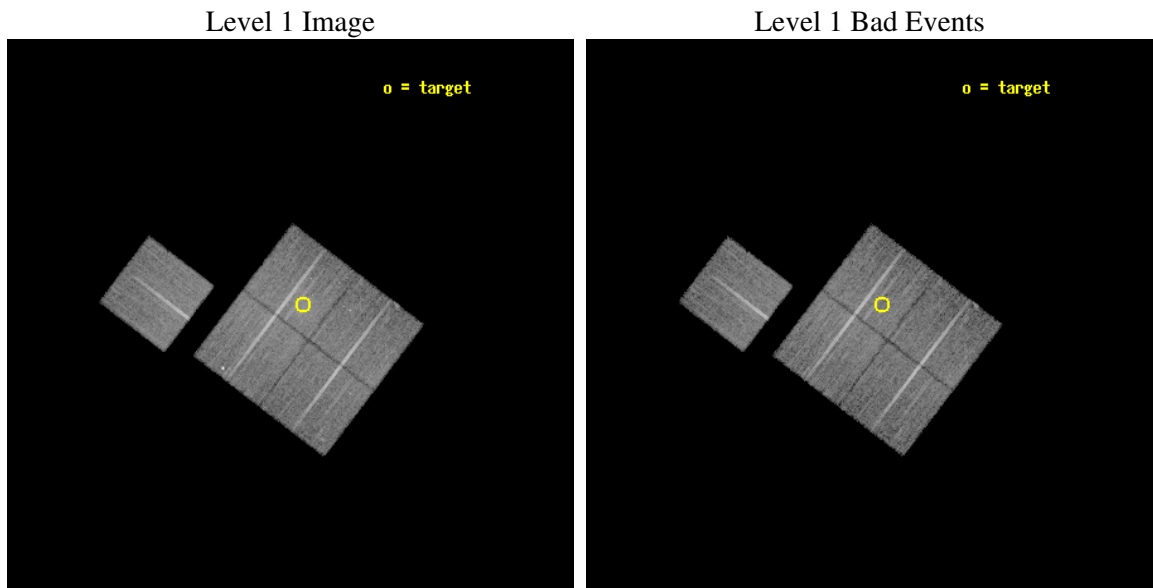
seq_num	800281
obs_id	3281
title	MACS: THE X-RAY PROPERTIES OF THE MOST MASSIVE GALAXY CLUSTERS AT $Z>0.3$
observer	Dr Harald Ebeling
object	MACSJ1731.6+2252
dtcycle	0
cycle	P
ra_targ	262.916667
dec_targ	22.866111
ra_nom	262.93976922349
dec_nom	22.835046286591
roll_nom	307.38208254762
revision	2
ontime	20773.099960059
livetime	20501.684116147
ontime0	20773.099960059
ontime1	20773.099960059
ontime2	20763.677049458
ontime3	20773.099960059
ontime6	20766.818039566
l2events	53616



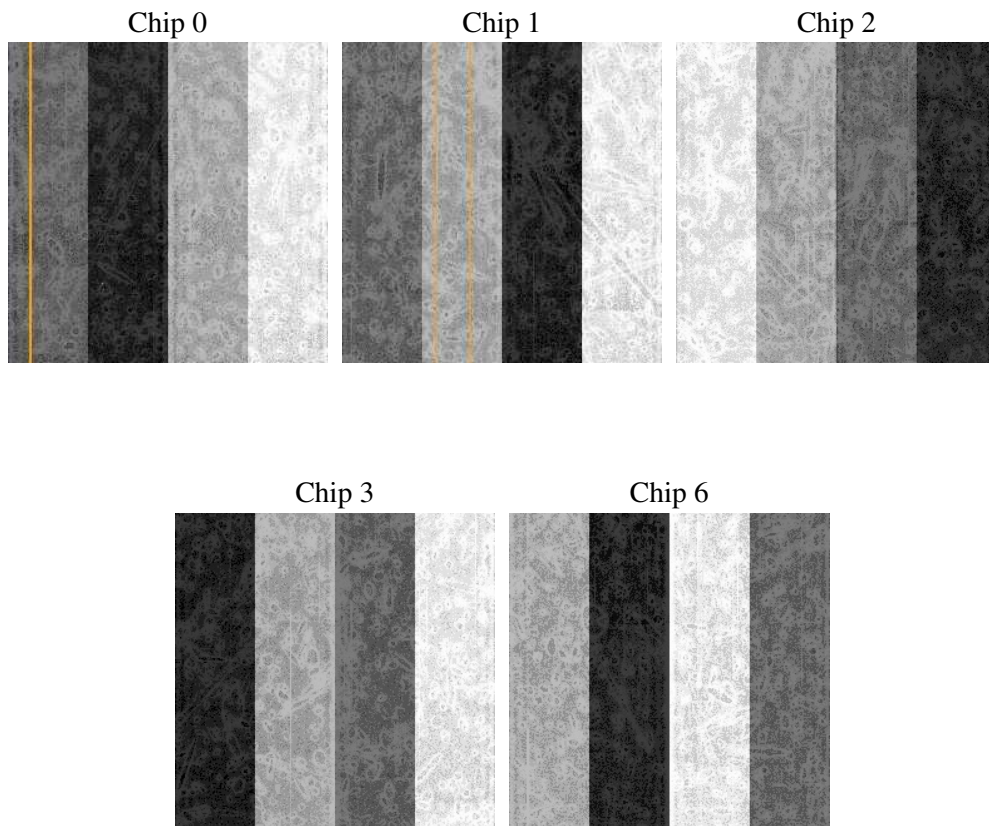
2 OBI

2.1 OBI

2.1.1 Images



2.1.2 Bias



2.1.3 Parameters

obi_num	1
ascdsver	7.6.9
caldbver	3.2.3
date	2006-10-12T00:46:54
revision	2

sched_exp_time	21000.000000
ontime	20777.718323976
ontime0	20777.718323976
ontime1	20777.718323976
ontime2	20768.295413375
ontime3	20777.718323976
ontime6	20771.436403483
l1events	546015

2.1.4 Events

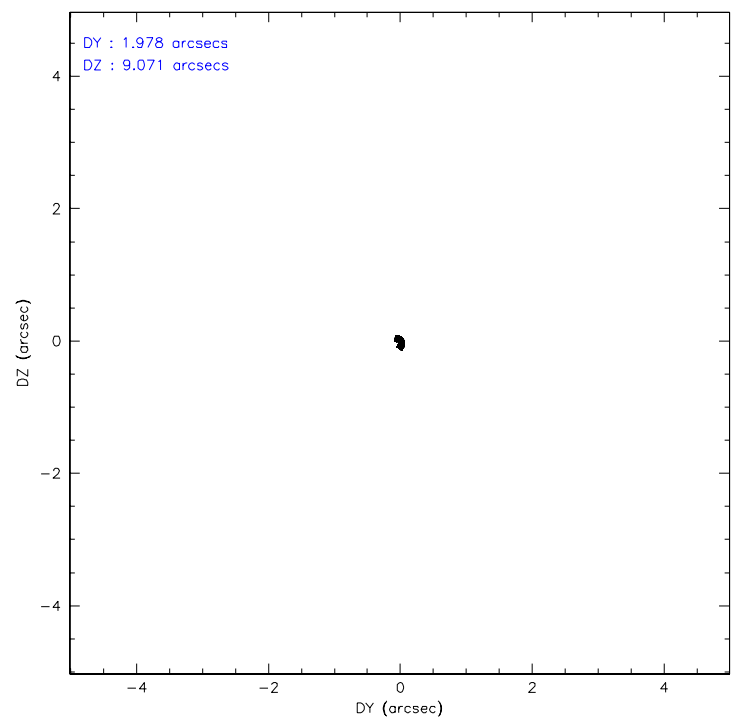
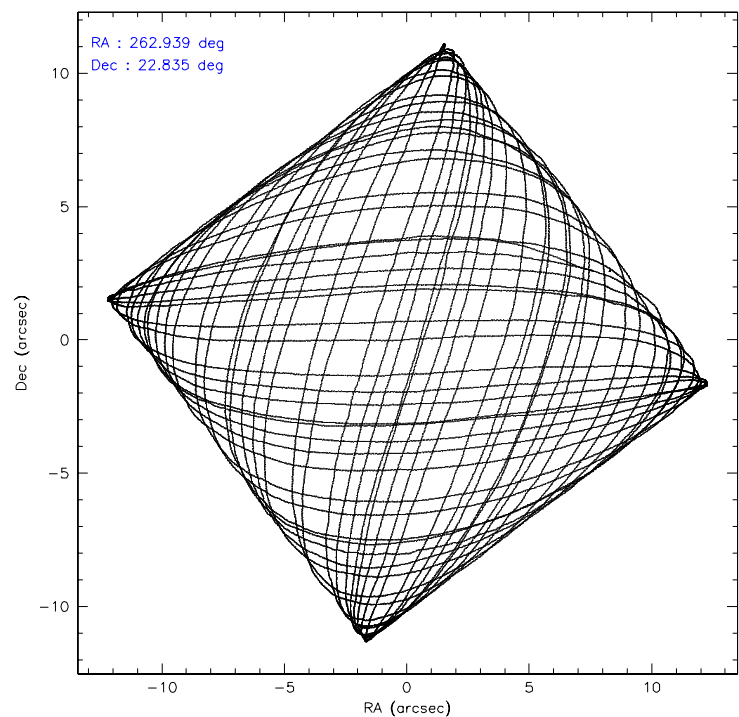
	ccd 0	ccd 1	ccd 2	ccd 3	ccd 6
level 1 events	98796	101932	118397	116703	110187
rejected events	87658	89338	105818	100416	99018
rejected %	88%	87%	89%	86%	89%

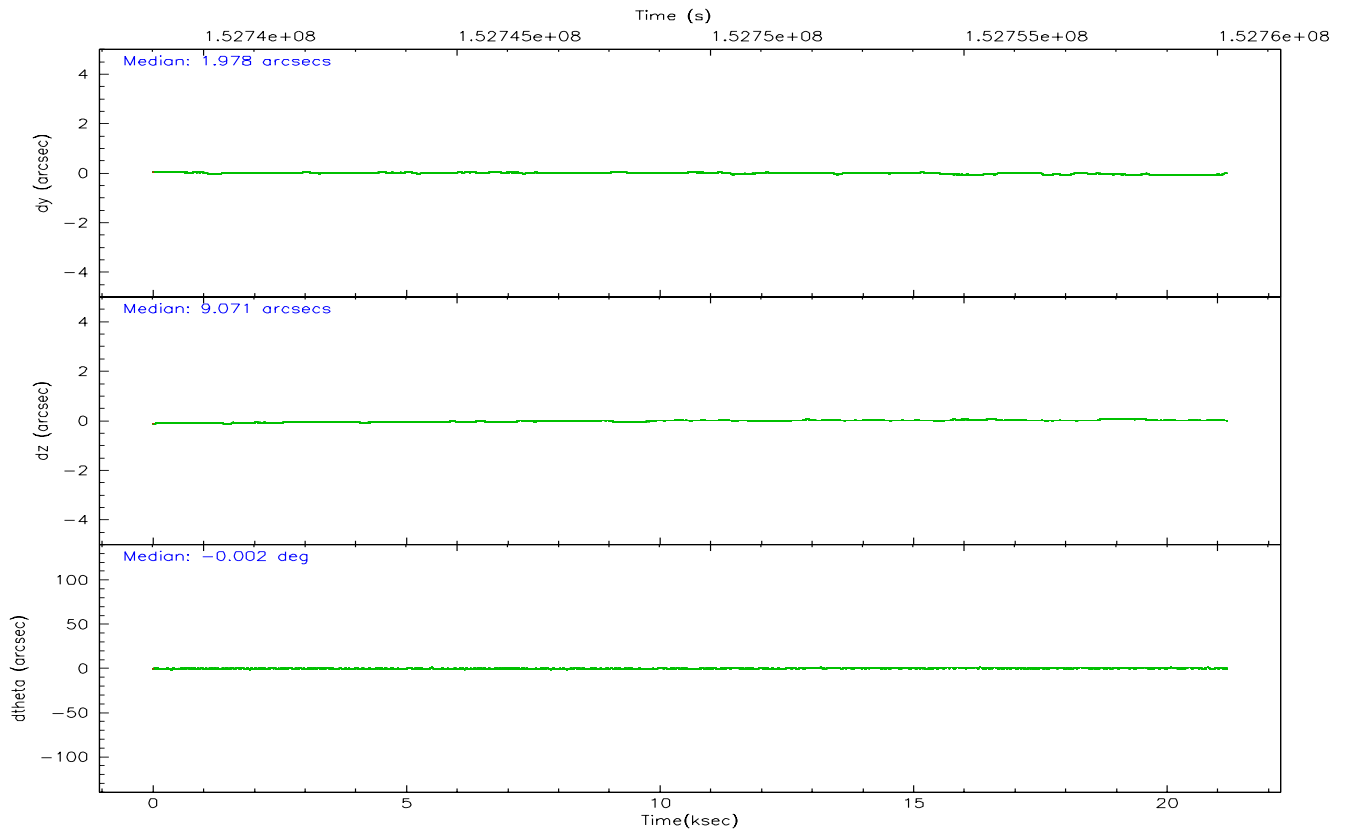
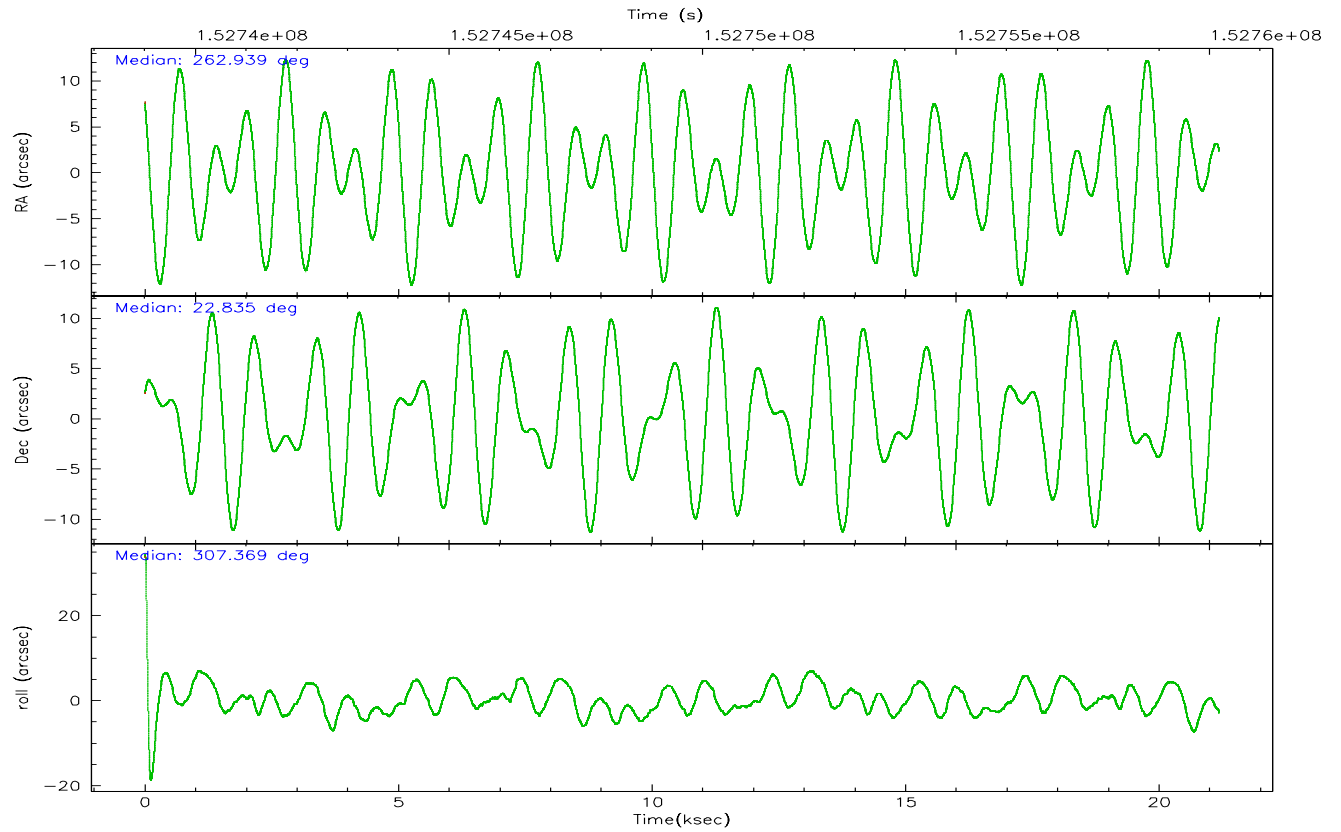
	ccd 0	ccd 1	ccd 2	ccd 3	ccd 6
grade 0 events	4162	4791	5449	8670	4050
	4%	4%	4%	7%	3%
grade 1 events	49	47	55	78	49
	0%	0%	0%	0%	0%
grade 2 events	2498	2566	2660	2732	2316
	2%	2%	2%	2%	2%
grade 3 events	1282	1413	1298	1372	1297
	1%	1%	1%	1%	1%
grade 4 events	1140	1452	1251	1364	1223
	1%	1%	1%	1%	1%
grade 5 events	3583	3906	3422	4044	4092
	3%	3%	2%	3%	3%
grade 6 events	2060	2375	1924	2154	2284
	2%	2%	1%	1%	2%
grade 7 events	84022	85382	102338	96289	94876
	85%	83%	86%	82%	86%

2.2 Compared Parameters

Parameter	Planned	Actual	Parameter	Planned	Actual
Instrument	ACIS	ACIS	Obspar format version number	6	6
Detector	ACIS-01236	ACIS-01236	Obspar file type	PREDICTED	ACTUAL
Grating	NONE	NONE	Obspar update status	NONE	UPDATED
Data mode	VFAINT	VFAINT	Number of optional ACIS chips dropped	0	0
Observation mode	POINTING	POINTING	On-chip summing requested	N	N
Pointing RA	262.912308	262.9397692234907	Subarray requested	NONE	NONE
Pointing Dec	22.845489	22.83504628659058	Alternating exposures requested	N	N
Pointing Roll	307.184019	307.3820825476208	Primary exposure time	0.000000	3.1
SIM focus pos (mm)	-0.782348	-0.7809083437167272			
SIM defocus (mm)	0	0.001439871863259334			
SIM translation stage pos (mm)	-227.742463	-227.734108438797			
SIM translation stage offset (mm)	-5.85	-5.858344564132665			
Observation start time	152739193.184000	152738567.8827			
Observation start date	2002-11-03T19:32:09	2002-11-03T19:22:47			
Observation end time	152760193.184000	152760927.23363			
Observation end date	2002-11-04T01:22:09	2002-11-04T01:35:27			
Read mode	TIMED	TIMED			

2.3 Aspect



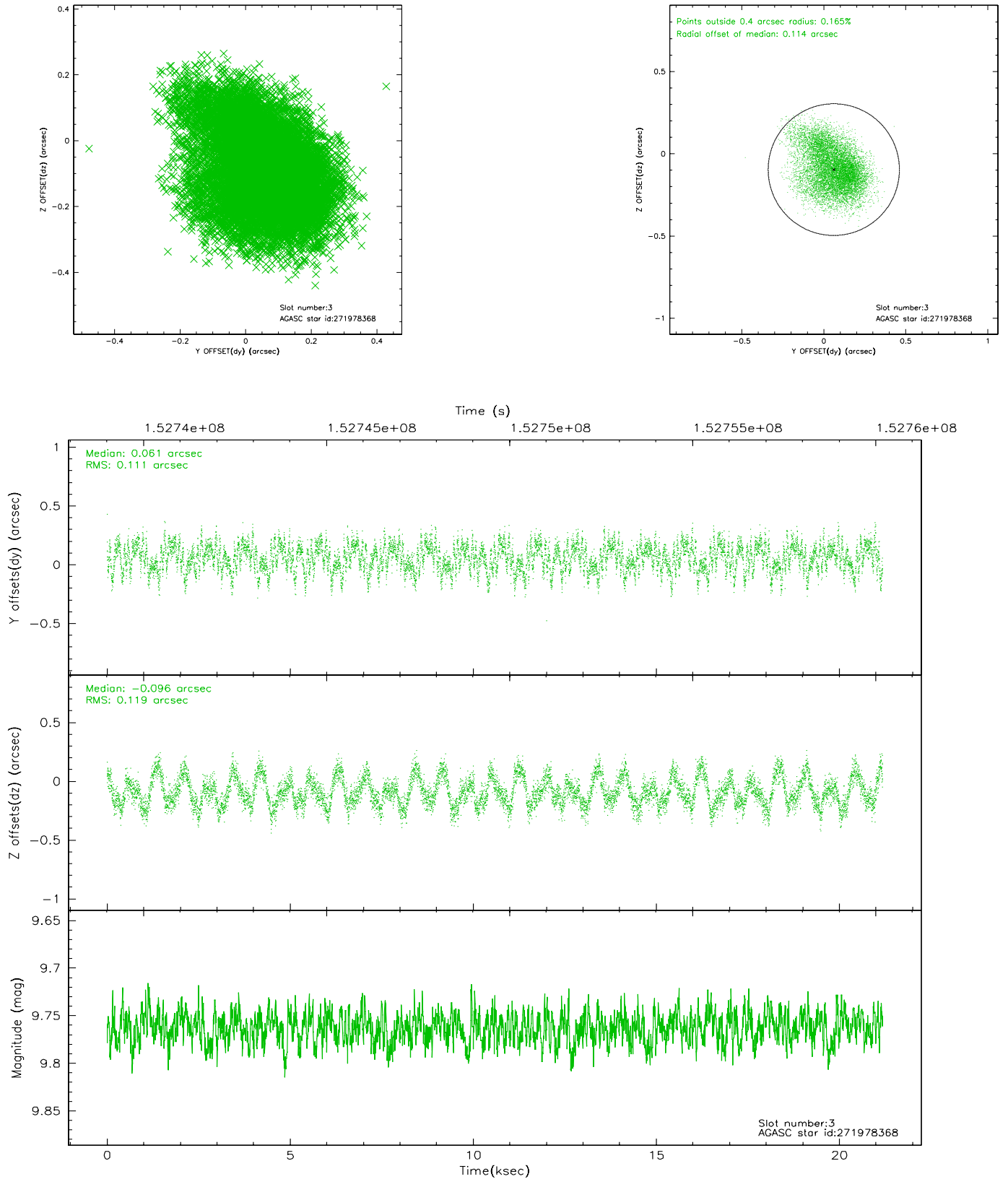


Slot Statistics

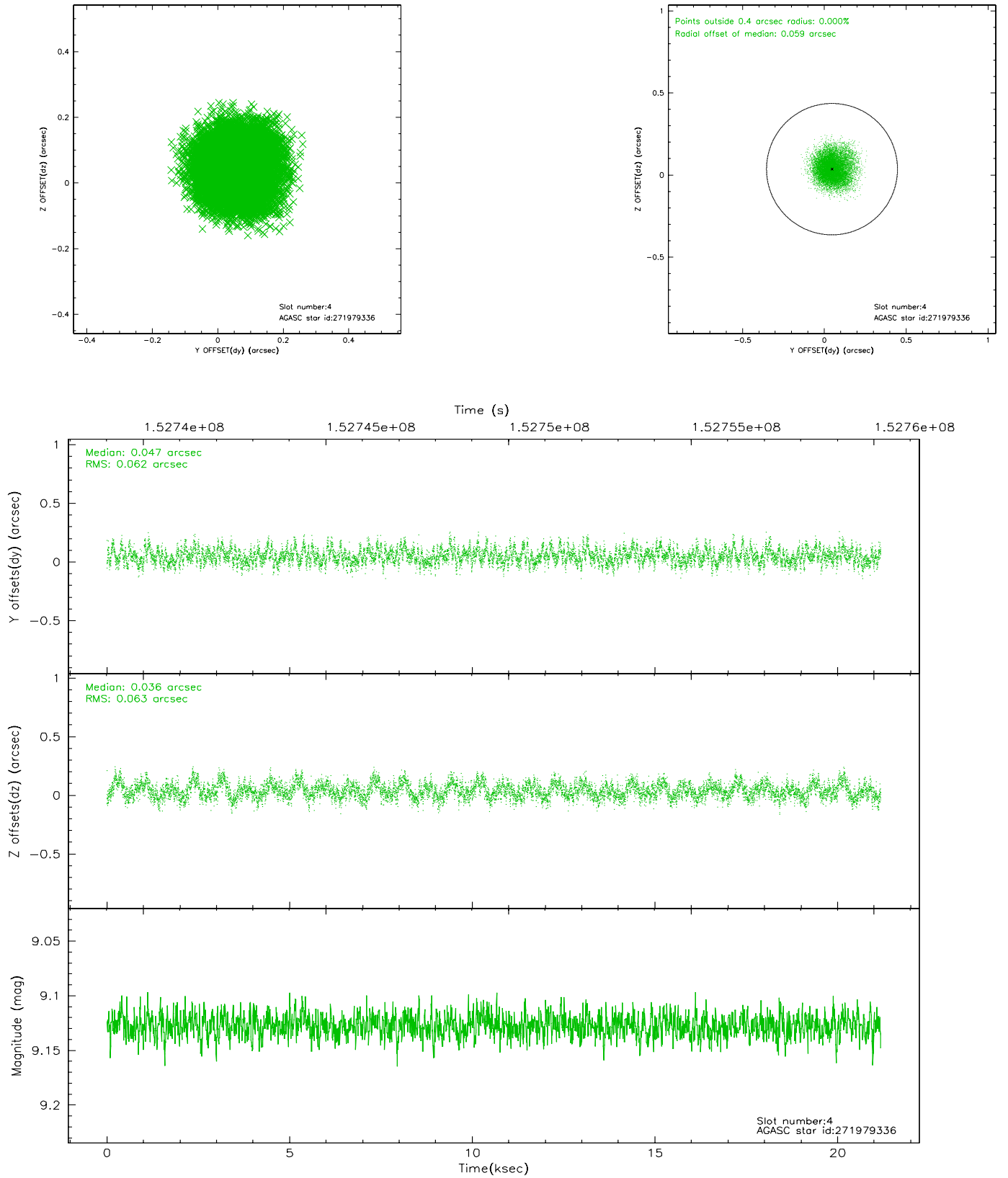
slot	status	id	mag	n_pts	med_dy	med_dz	dr1	dr2	ra	dec	mean_y	mean_z
0	FID	ACIS-I-1	7.24	5168	0.009	0.020	0.006	0.011	0.000000	0.000000	937.74	-952.73
1	FID	ACIS-I-5	7.23	5167	-0.096	0.049	0.006	0.010	0.000000	0.000000	-1810.37	944.70
2	FID	ACIS-I-6	7.25	5167	-0.004	0.001	0.007	0.012	0.000000	0.000000	403.11	1589.33
3	GUIDE	271978368	9.76	10325	0.061	-0.096	0.175	0.277	263.155604	23.545364	-1521.93	2162.97
4	GUIDE	271979336	9.13	10325	0.047	0.036	0.094	0.152	263.202554	23.288341	-690.23	1729.34
5	GUIDE	271988024	9.40	10323	-0.084	0.014	0.108	0.170	263.403778	23.086720	290.21	1823.95
6	GUIDE	203165048	8.35	10333	-0.025	0.027	0.073	0.114	262.431727	22.304803	583.08	-2449.48
7	GUIDE	203171184	9.41	10264	-0.009	-0.001	0.126	0.202	262.672265	22.409857	767.67	-1583.44

2.4 Star Slots

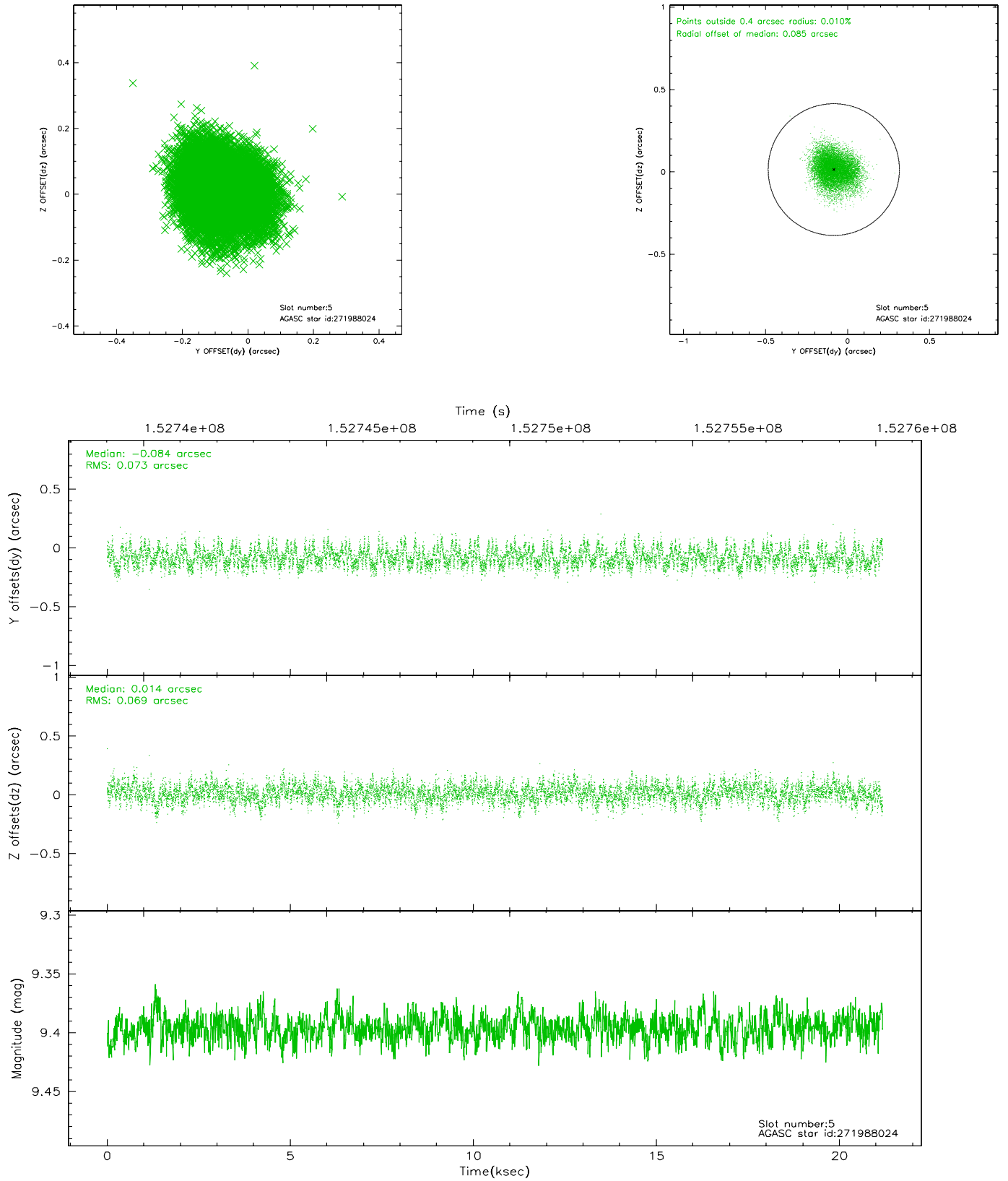
2.4.1 Slot 3



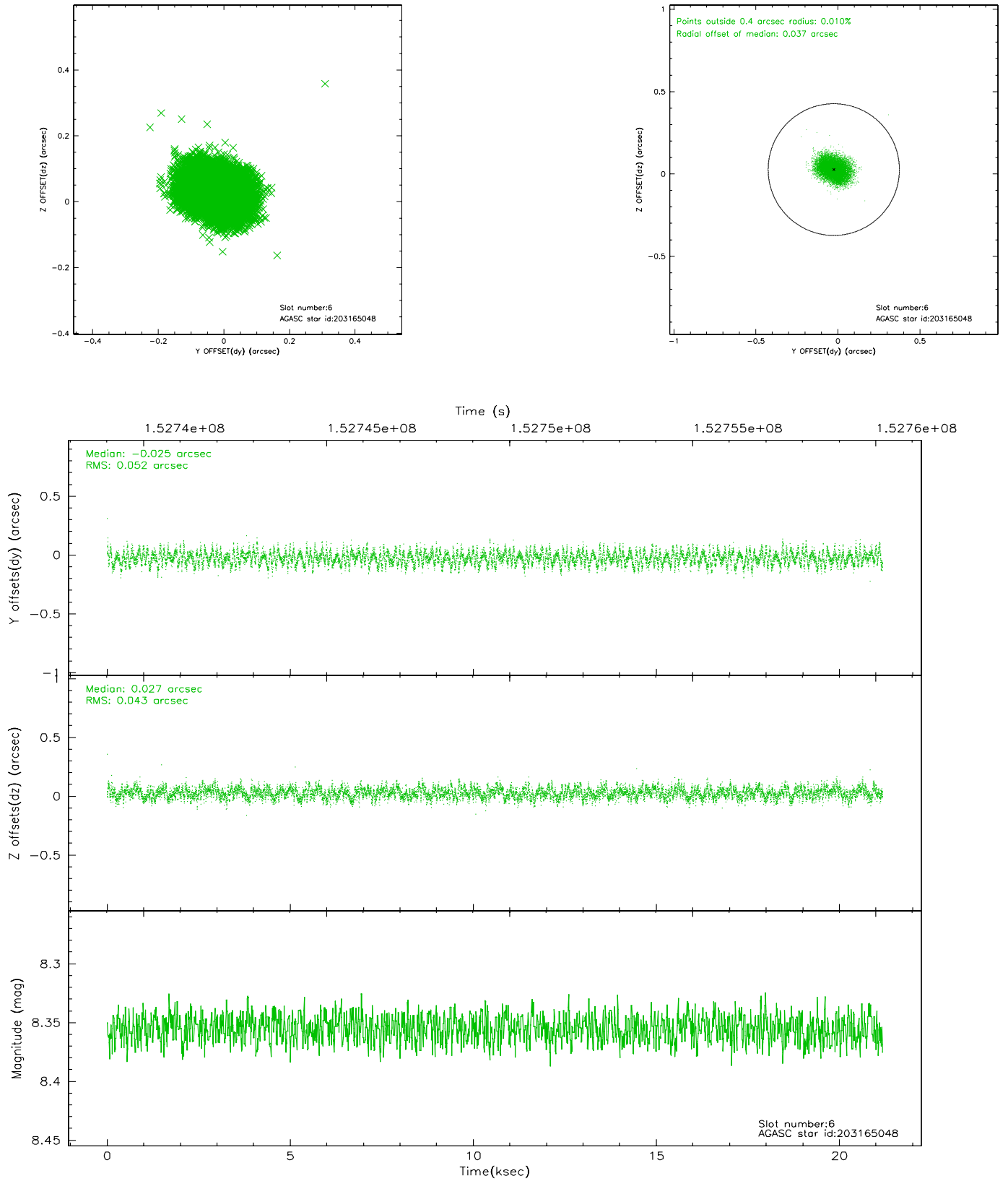
2.4.2 Slot 4



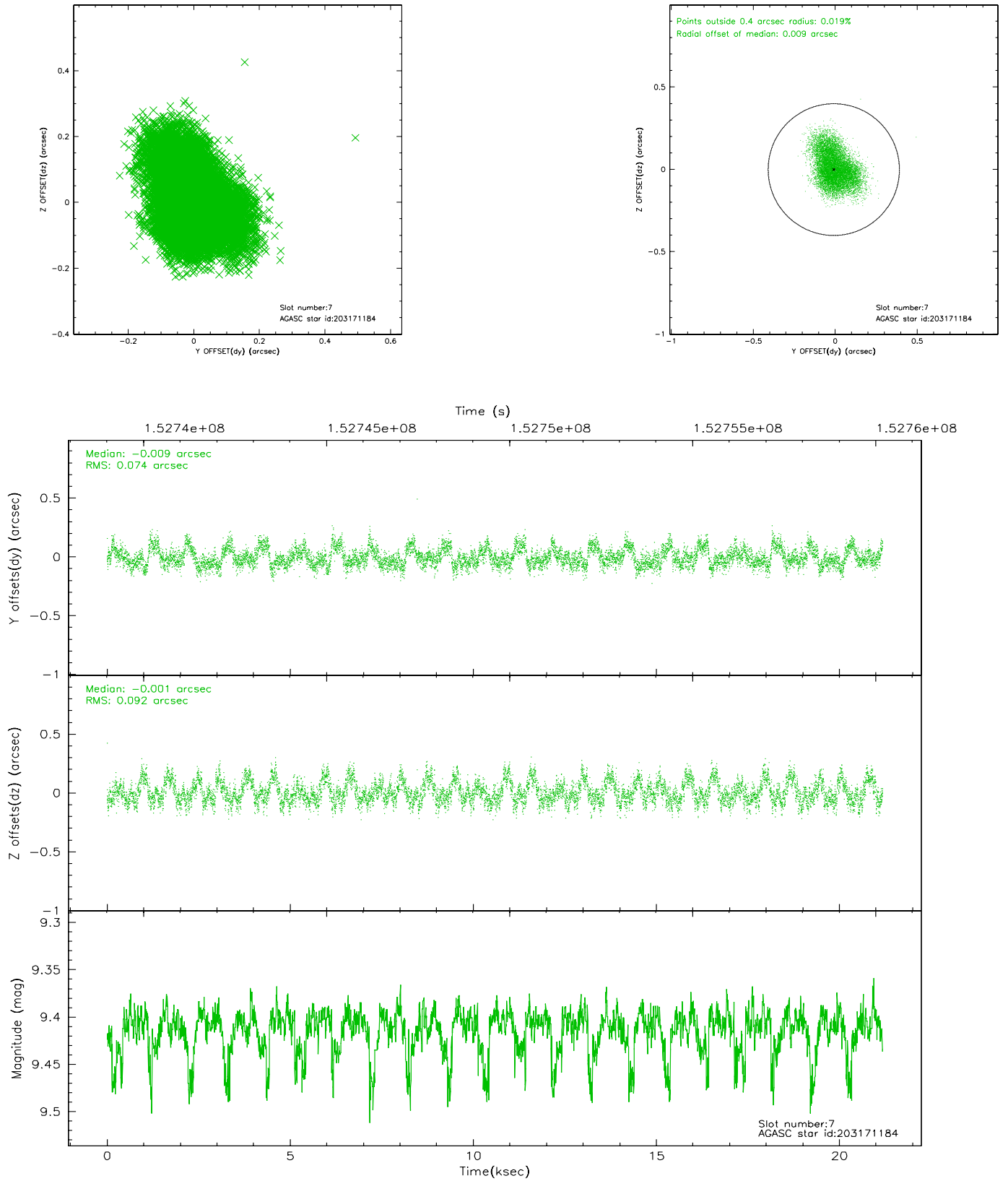
2.4.3 Slot 5



2.4.4 Slot 6

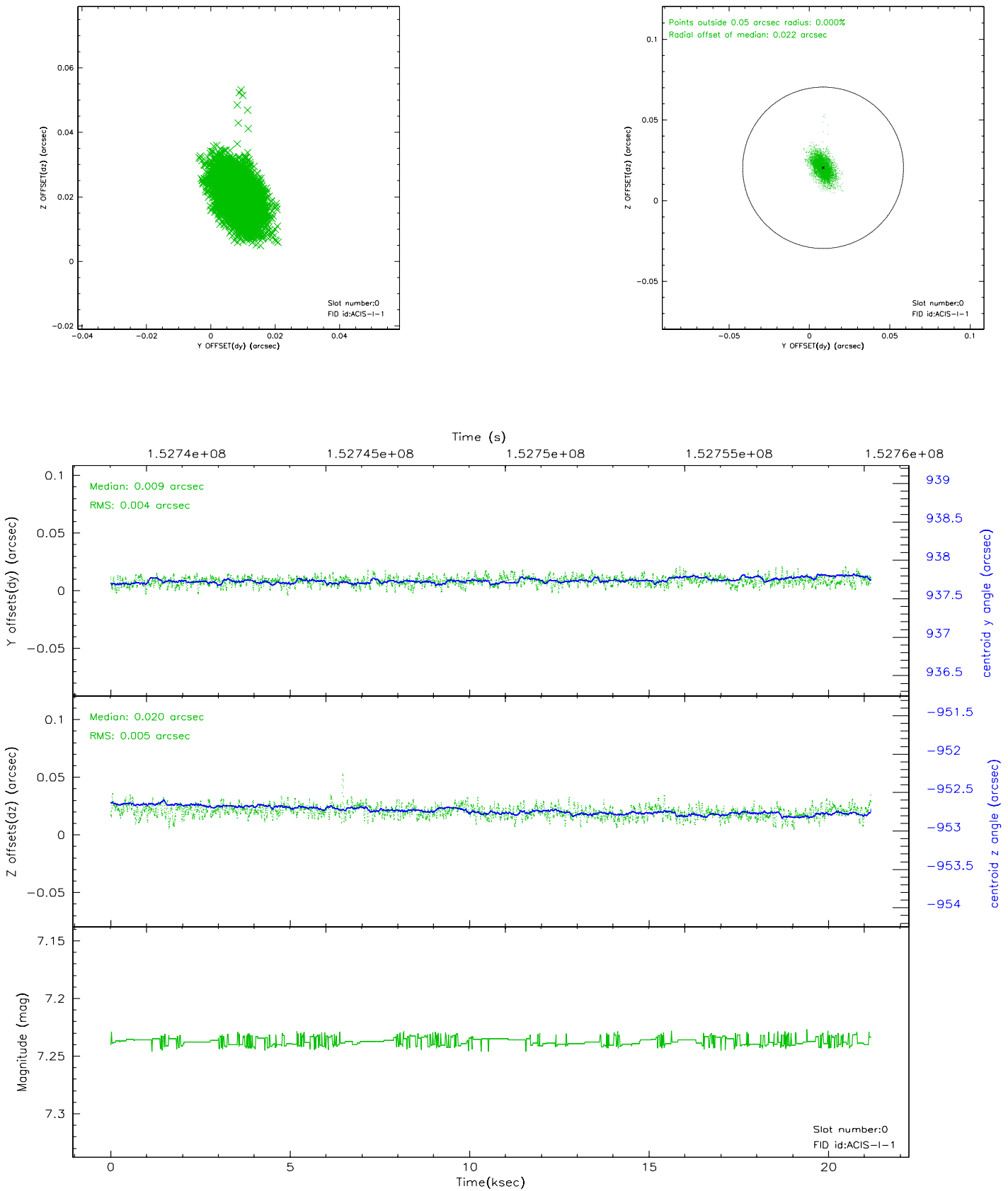


2.4.5 Slot 7

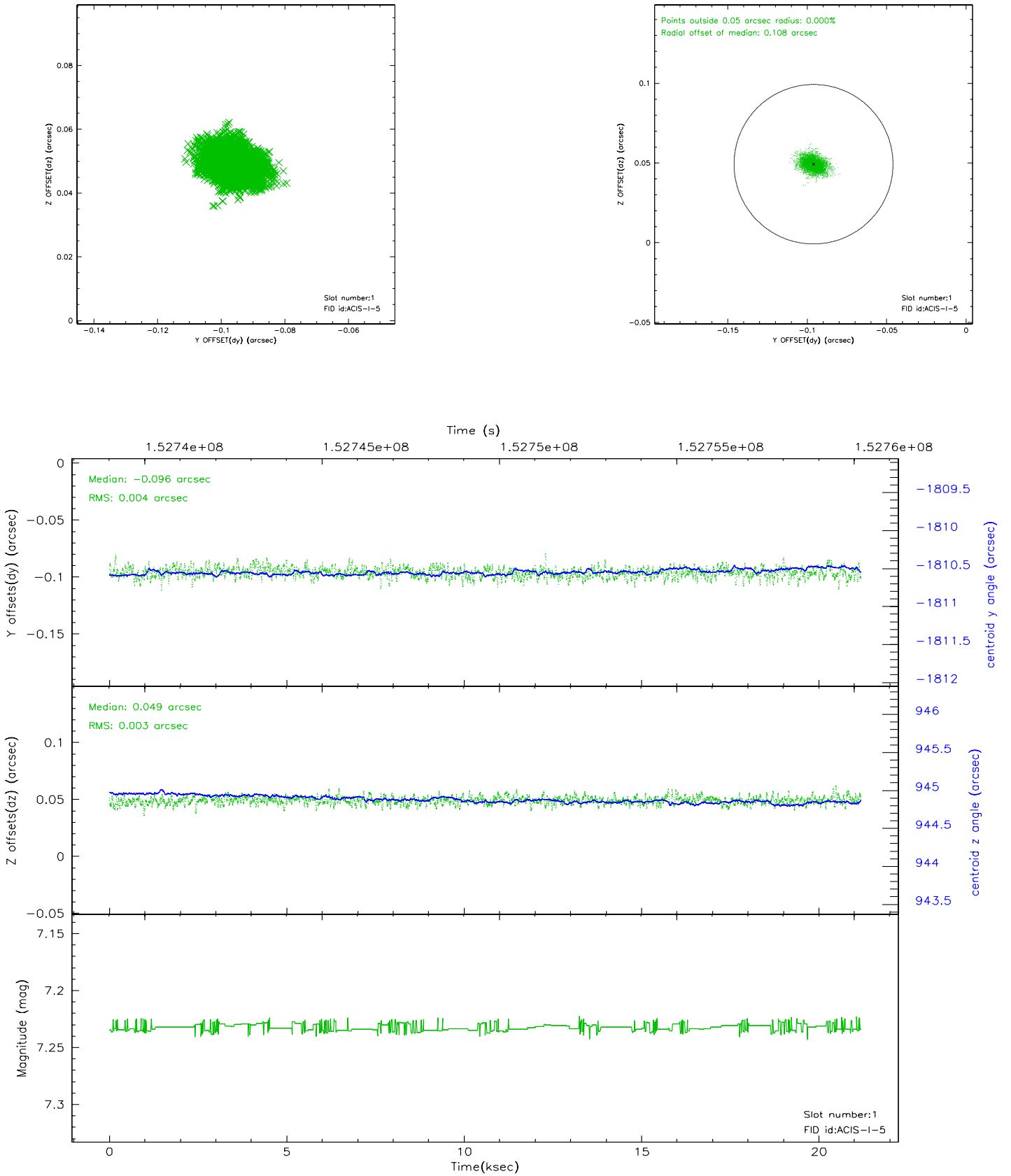


2.5 FID Slots

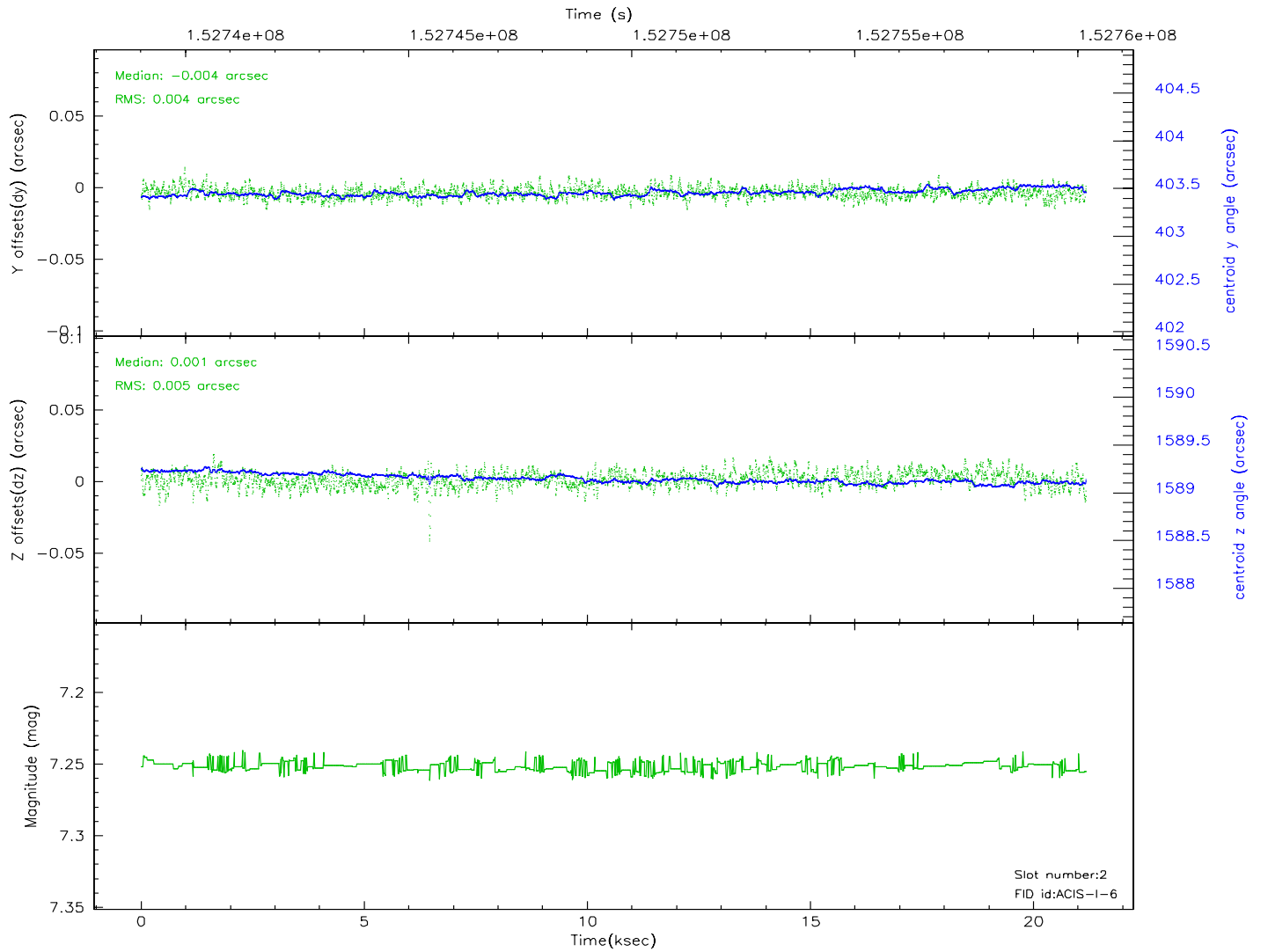
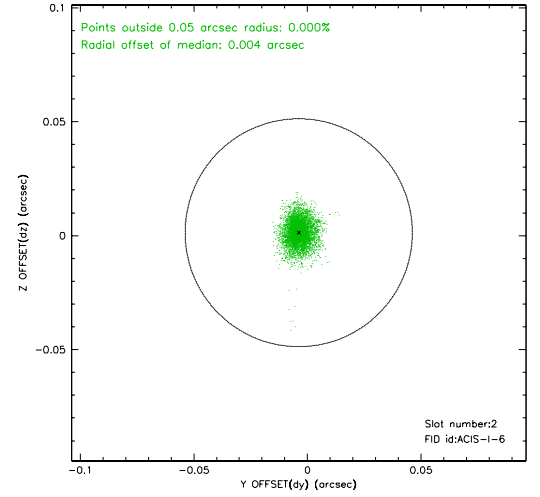
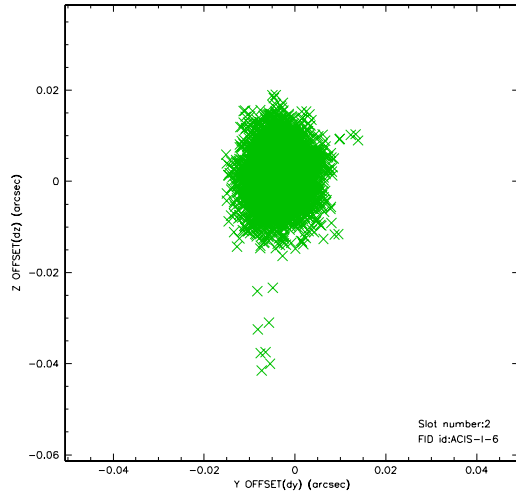
2.5.1 Slot 0



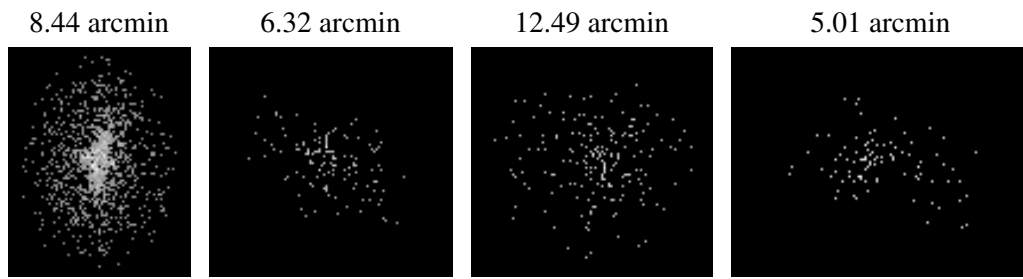
2.5.2 Slot 1



2.5.3 Slot 2



3 Point Sources



A Summary

A.1 Status

V&V Scientist	Beth Sundheim
V&V Date (YYYY-MM-DD)	2006.10.12
V&V Edition	1
V&V Disposition and Status	OK
V&V Charge Time	20.769

A.2 Comments