

V&V Reference Report

L2 ASCDS Version : 8.4.5

Observation 3266 - L2 Version 3
Chandra X-Ray Center

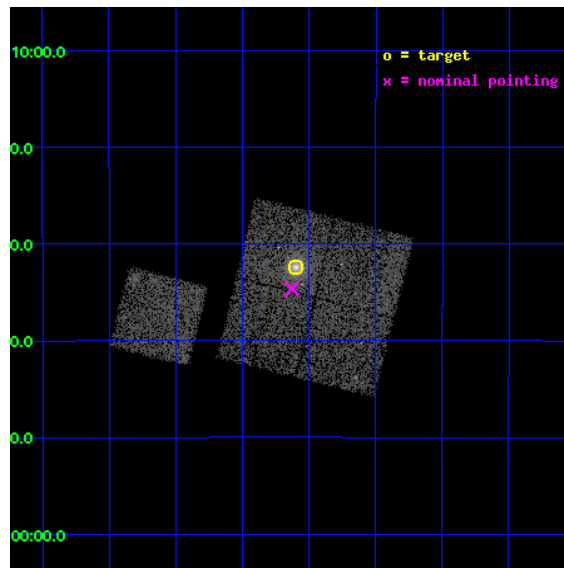
L2 Processing Date : Oct 2 2012

Contents

1	Front	2
2	OBI	3
2.1	OBI	3
2.1.1	Images	3
2.1.2	Bias	3
2.1.3	Parameters	4
2.1.4	Events	4
2.2	Compared Parameters	5
2.3	Aspect	6
2.4	Star Slots	9
2.4.1	Slot 3	9
2.4.2	Slot 4	10
2.4.3	Slot 5	11
2.4.4	Slot 6	12
2.4.5	Slot 7	13
2.5	FID Slots	14
2.5.1	Slot 0	14
2.5.2	Slot 1	15
2.5.3	Slot 2	16
A	Summary	17
A.1	Status	17
A.2	Comments	17

1 Front

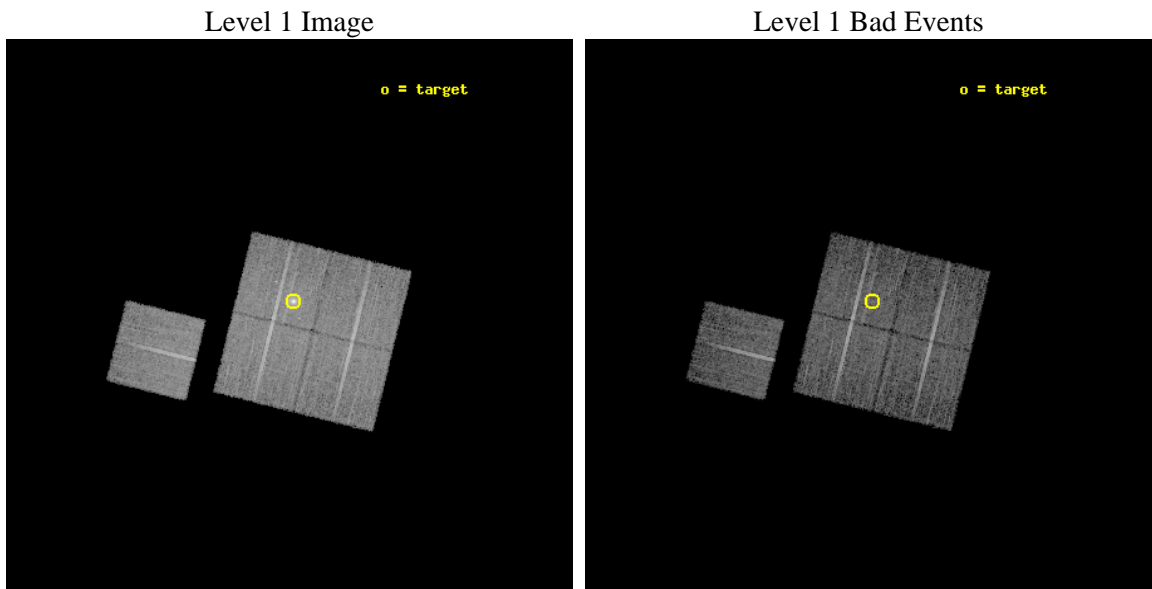
seq_num	800266	Sequence number
obs_id	3266	Observation id
title	MACS: THE X-RAY PROPERTIES OF THE MOST MASSIVE GALAXY CLUSTERS AT $Z>0.3$	Proposal title
observer	Dr. Harald Ebeling	Principal investigator
object	MACSJ0242.5-2132	Source name
dtcycle	0	
cycle	P	events from which exps? Prim/Second/Both
ra_targ	40.649583	Observer's specified target RA [deg]
dec_targ	-21.540556	Observer's specified target Dec [deg]
ra_nom	40.657326029604	Nominal RA [deg]
dec_nom	-21.577609079543	Nominal Dec [deg]
roll_nom	283.92875361492	Nominal Roll [deg]
revision	3	Processing version of data
ontime	12015.599976897	Sum of GTIs [s]
livetime	11858.607317443	Livetime [s]
ontime0	12012.459016651	Sum of GTIs [s]
ontime1	12015.599976897	Sum of GTIs [s]
ontime2	12012.458986714	Sum of GTIs [s]
ontime3	12015.599976897	Sum of GTIs [s]
ontime6	12015.599976897	Sum of GTIs [s]
l2events	36684	Number of level 2 events



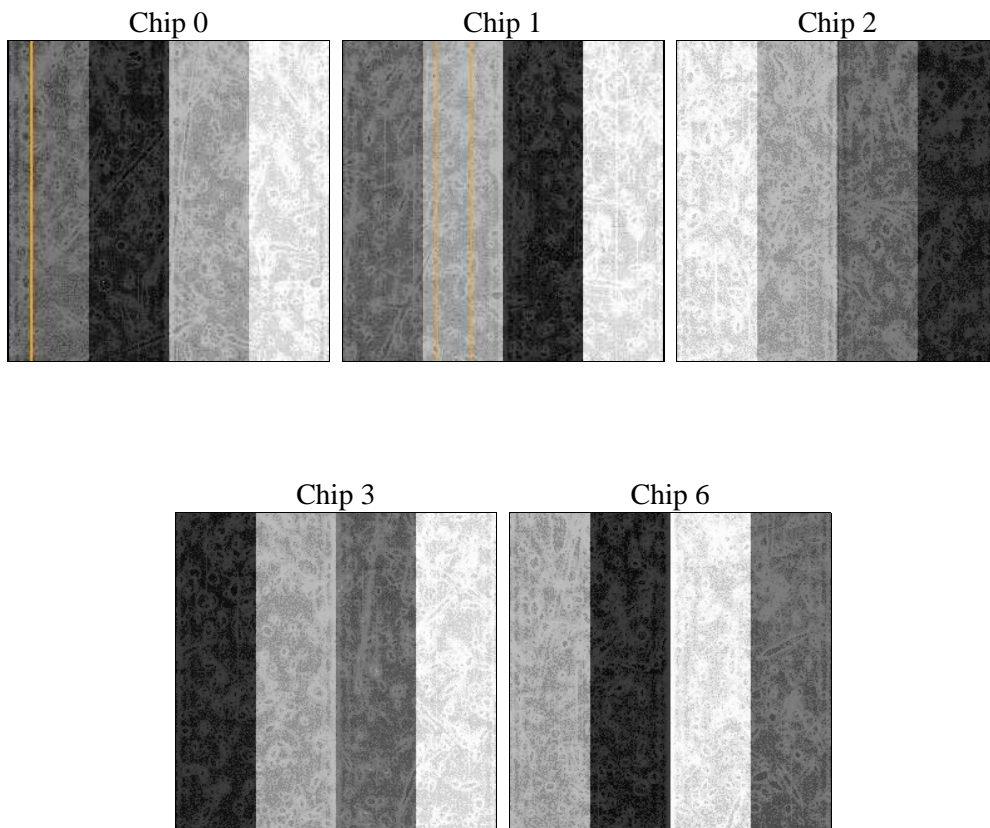
2 OBI

2.1 OBI

2.1.1 Images



2.1.2 Bias



2.1.3 Parameters

obi_num	0	Obi number	sched_exp_time	11900.000000	[s] Scheduled observation exposure time
ascdsver	8.4.5	Processing system revision	ontime	12015.599976897	Sum of GTIs [s]
caldbver	4.5.2	 	ontime0	12012.459016651	Sum of GTIs [s]
date	2012-10-02T05:33:03	Date and time of file creation	ontime1	12015.599976897	Sum of GTIs [s]
revision	3	Processing version of data	ontime2	12012.458986714	Sum of GTIs [s]
			ontime3	12015.599976897	Sum of GTIs [s]
			ontime6	12015.599976897	Sum of GTIs [s]
			l1events	339612	Number of level 1 events

2.1.4 Events

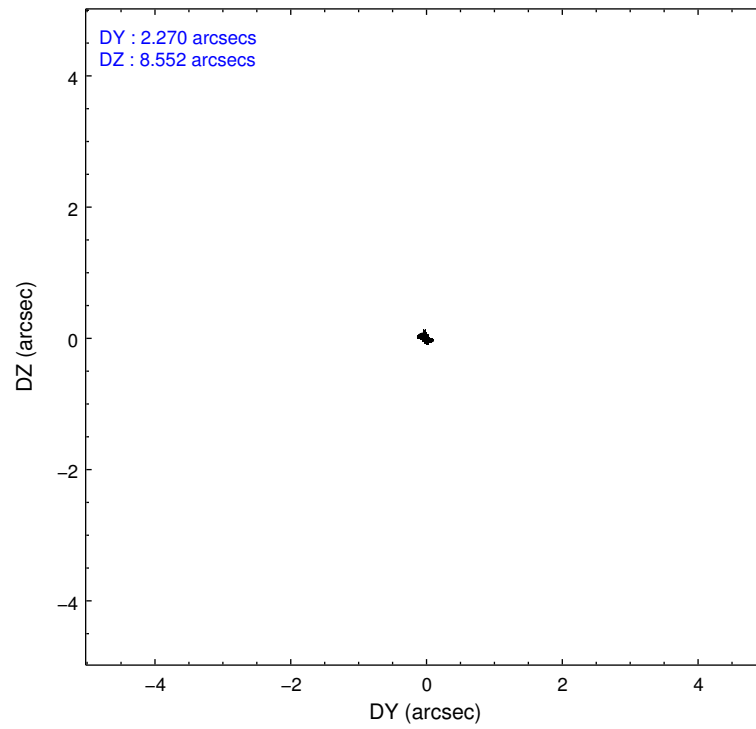
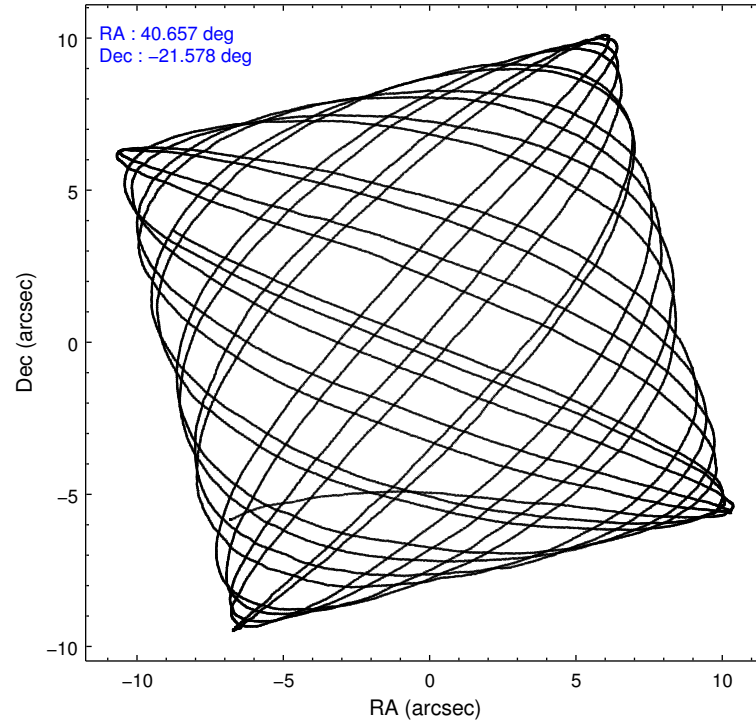
	ccd 0	ccd 1	ccd 2	ccd 3	ccd 6
level 1 events	63055	63641	71593	75396	65927
rejected events	56400	56219	65229	60415	58780
rejected %	89%	88%	91%	80%	89%

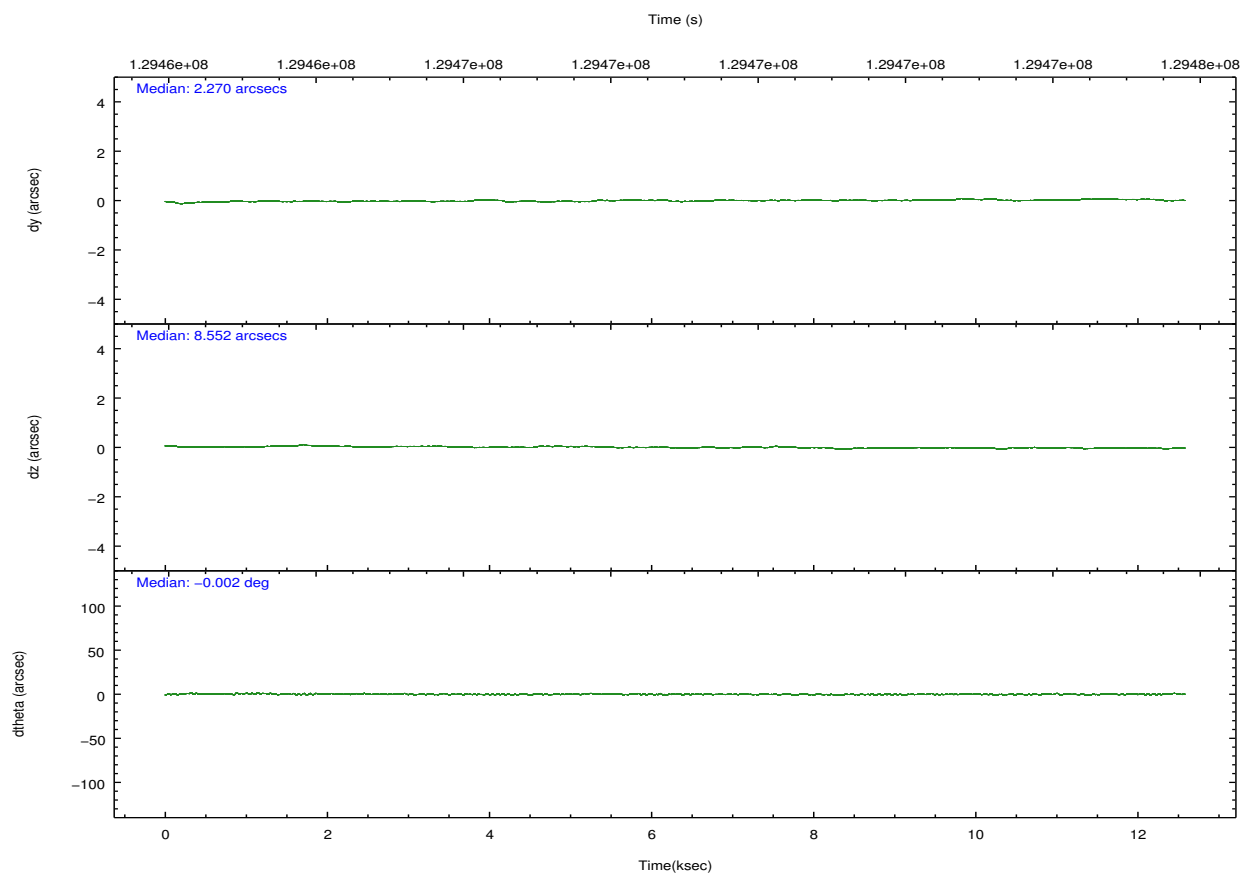
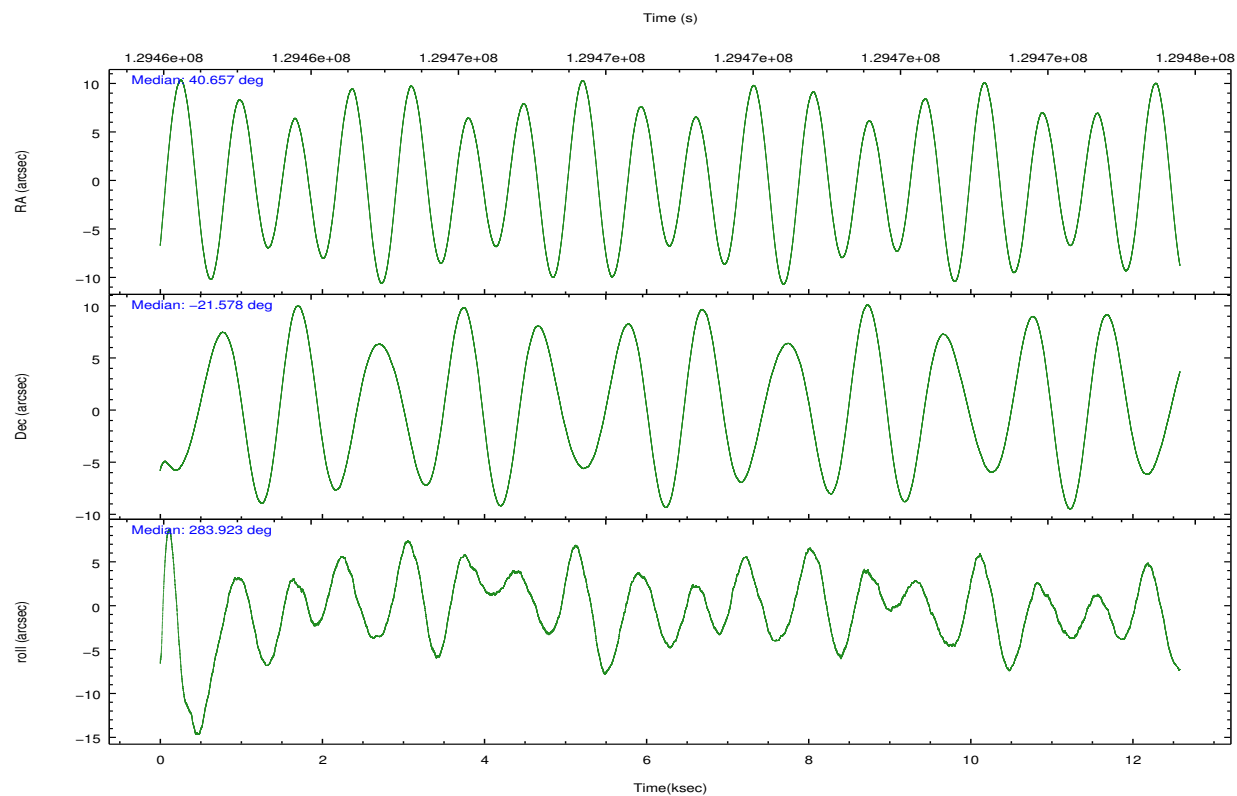
	ccd 0	ccd 1	ccd 2	ccd 3	ccd 6
grade 0 events	2346	2957	2402	9655	2899
	3%	4%	3%	12%	4%
grade 1 events	26	29	35	62	20
	0%	0%	0%	0%	0%
grade 2 events	1532	1484	1421	2132	1408
	2%	2%	1%	2%	2%
grade 3 events	786	815	671	904	779
	1%	1%	0%	1%	1%
grade 4 events	707	783	705	899	724
	1%	1%	0%	1%	1%
grade 5 events	2187	2220	2060	2444	2464
	3%	3%	2%	3%	3%
grade 6 events	1285	1389	1167	1396	1339
	2%	2%	1%	1%	2%
grade 7 events	54186	53964	63132	57904	56294
	85%	84%	88%	76%	85%

2.2 Compared Parameters

Parameter	Planned	Actual	Parameter	Planned	Actual
Instrument	ACIS	ACIS	Obspar format version number	7	7
Detector	ACIS-01236	ACIS-01236	Obspar file type	PREDICTED	ACTUAL
Grating	NONE	NONE	Obspar update status	NONE	UPDATED
Data mode	VFAINT	VFAINT	Number of optional ACIS chips dropped	0	0
Observation mode	POINTING	POINTING	On-chip summing requested	N	N
[deg] Pointing RA	40.636793	40.65732602960362	Subarray requested	NONE	NONE
[deg] Pointing Dec	-21.557872	-21.57760907954339	Alternating exposures requested	N	N
[deg] Pointing Roll	283.712533	283.9287536149212	[s] Primary exposure time	0.000000	3.1
[mm] SIM focus pos	-0.782348	-0.7809083437167272			
[mm] SIM defocus	0	0.001439871863259334			
[mm] SIM translation stage pos	-227.742463	-227.734108438797			
[mm] SIM translation stage offset	-5.85	-5.858344564132665			
[s] Observation start time (MET)	129463263.184000	129462058.71693			
Observation start date	2002-02-07T09:59:59	2002-02-07T09:40:58			
[s] Observation end time (MET)	129475163.184000	129475715.30498			
Observation end date	2002-02-07T13:18:19	2002-02-07T13:28:35			
Read mode	TIMED	TIMED			

2.3 Aspect



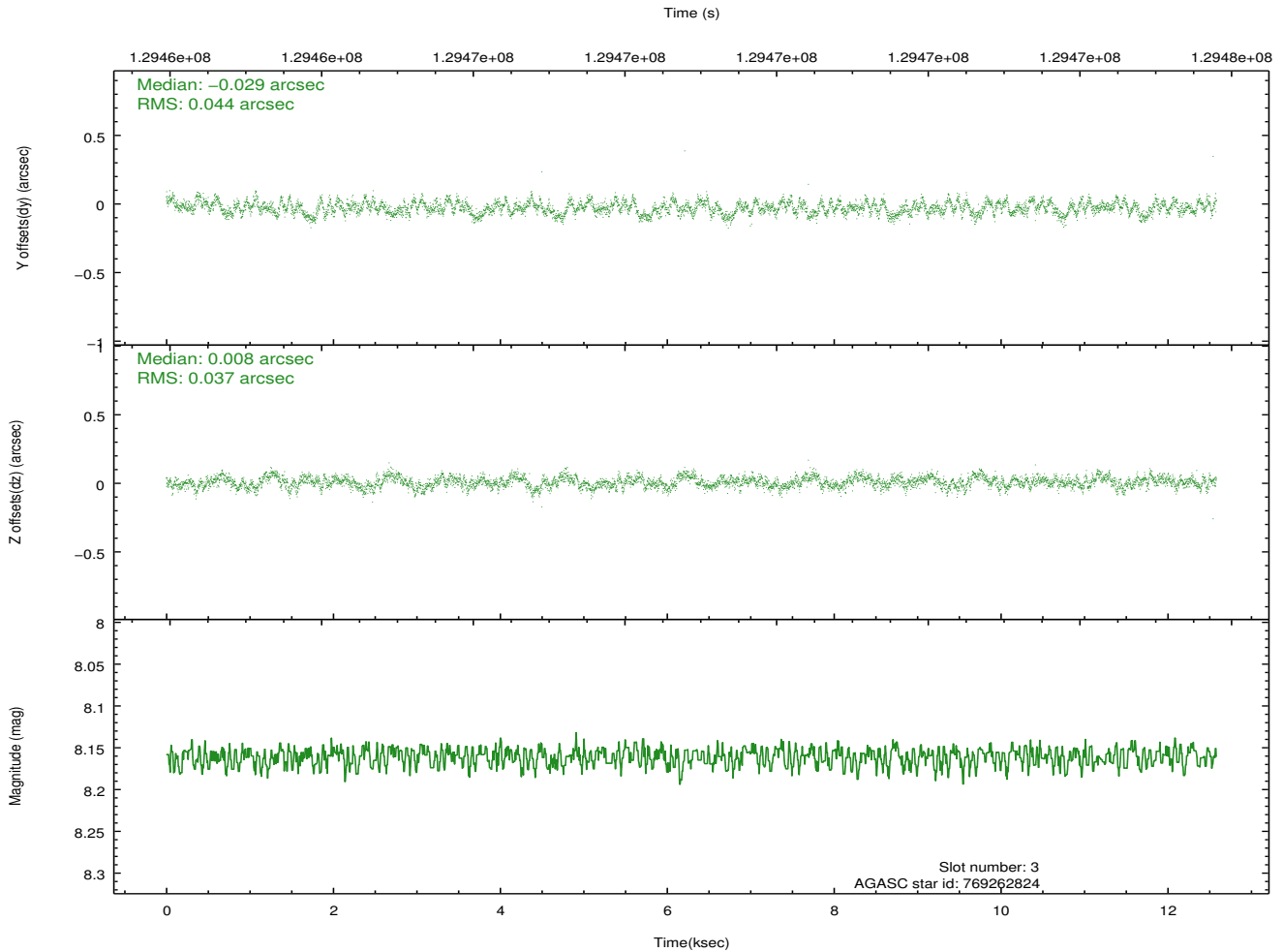
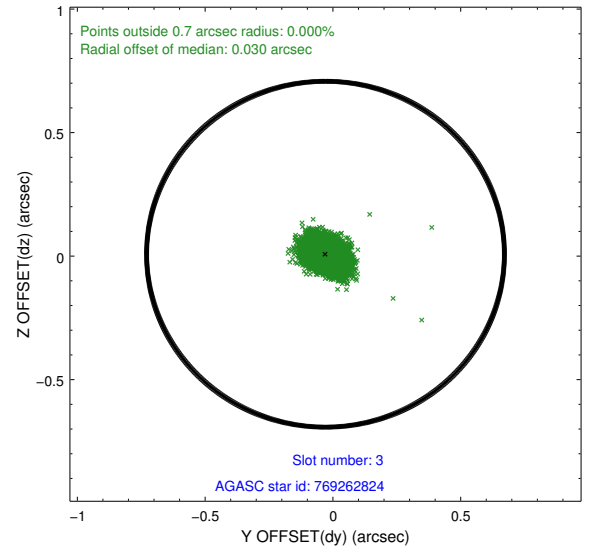
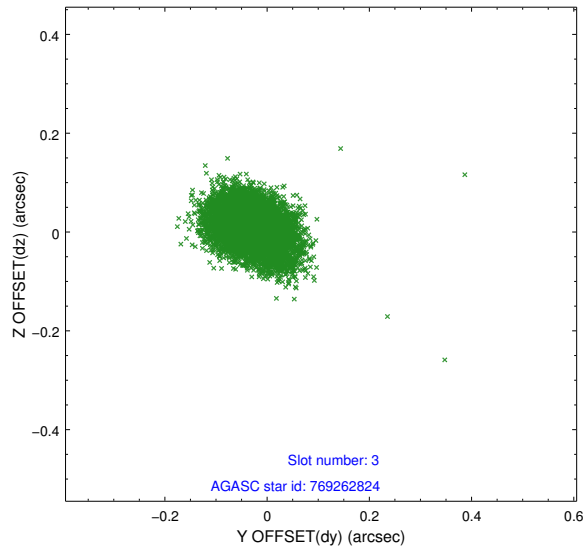


Slot Statistics

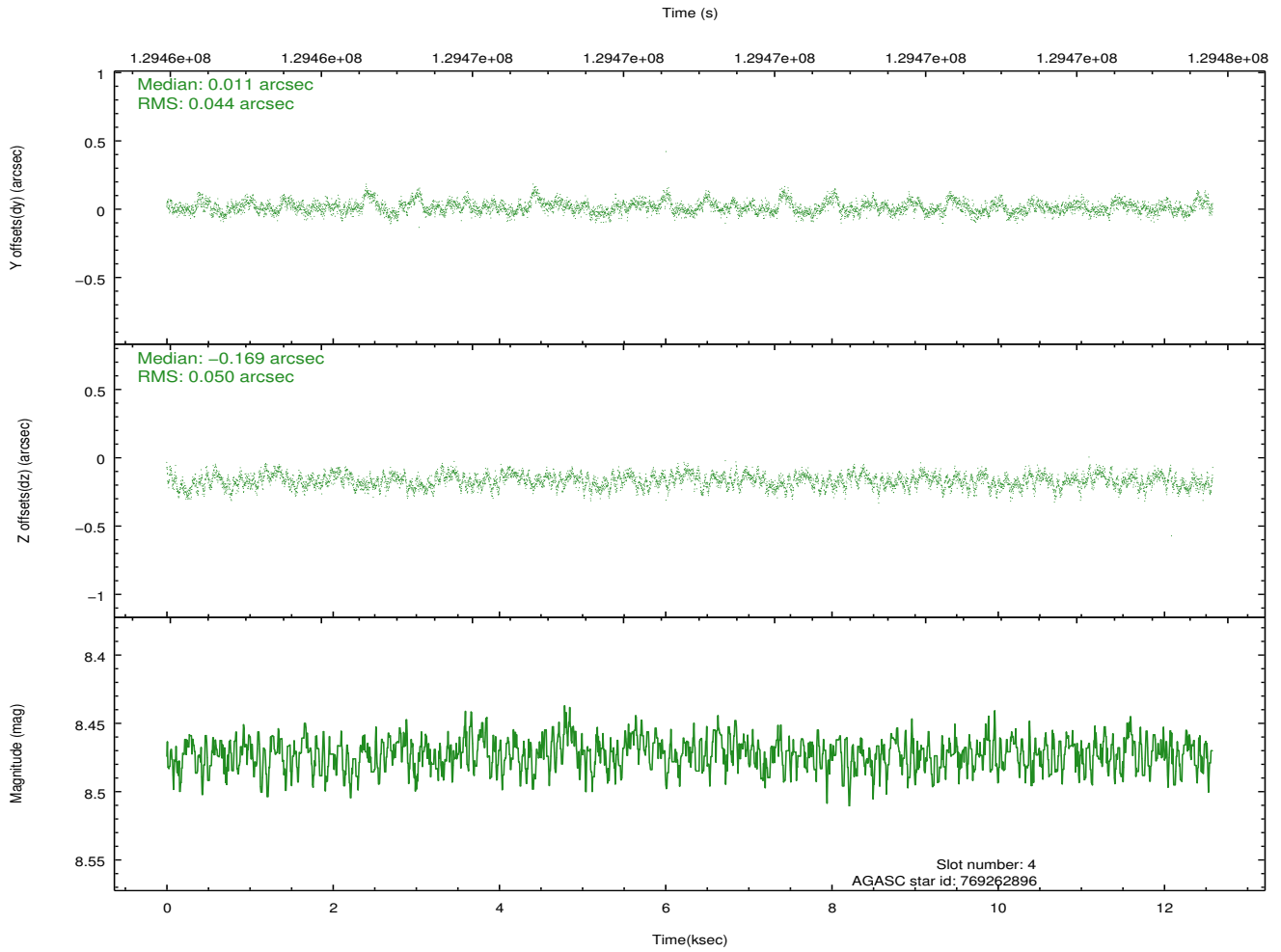
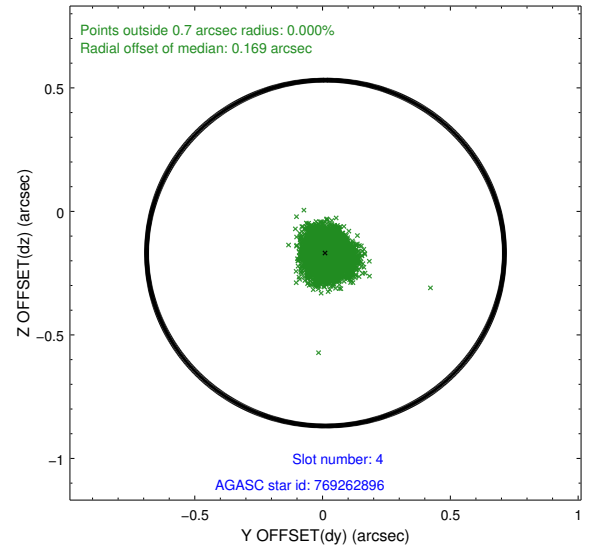
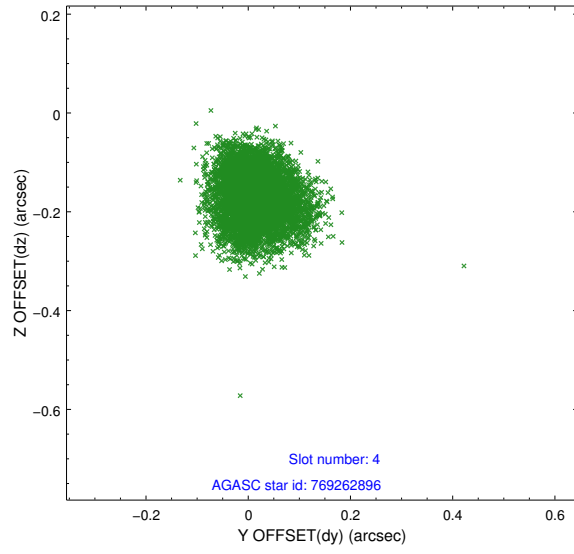
slot	status	id	mag	n_pts	med_dy	med_dz	dr1	dr2	ra	dec	mean_y	mean_z
0	FID	ACIS-I-1	7.24	3068	0.011	0.018	0.006	0.011	0.000000	0.000000	937.45	-952.21
1	FID	ACIS-I-5	7.23	3068	-0.098	0.050	0.006	0.010	0.000000	0.000000	-1810.55	945.08
2	FID	ACIS-I-6	7.25	3069	-0.004	0.003	0.007	0.011	0.000000	0.000000	402.56	1589.98
3	GUIDE	769262824	8.16	6137	-0.029	0.008	0.061	0.098	40.233653	-21.922255	957.31	-1619.39
4	GUIDE	769262896	8.47	6138	0.011	-0.169	0.071	0.114	40.156866	-21.578784	-304.39	-1580.01
5	GUIDE	769266064	8.79	6139	-0.056	0.048	0.068	0.111	40.429333	-21.171660	-1515.33	-347.42
6	GUIDE	769262640	9.55	6132	0.243	-0.011	0.082	0.134	40.628059	-21.816597	898.30	-249.30
7	GUIDE	769267432	9.53	6133	-0.167	0.117	0.147	0.239	40.968206	-20.802152	-2377.53	1728.02

2.4 Star Slots

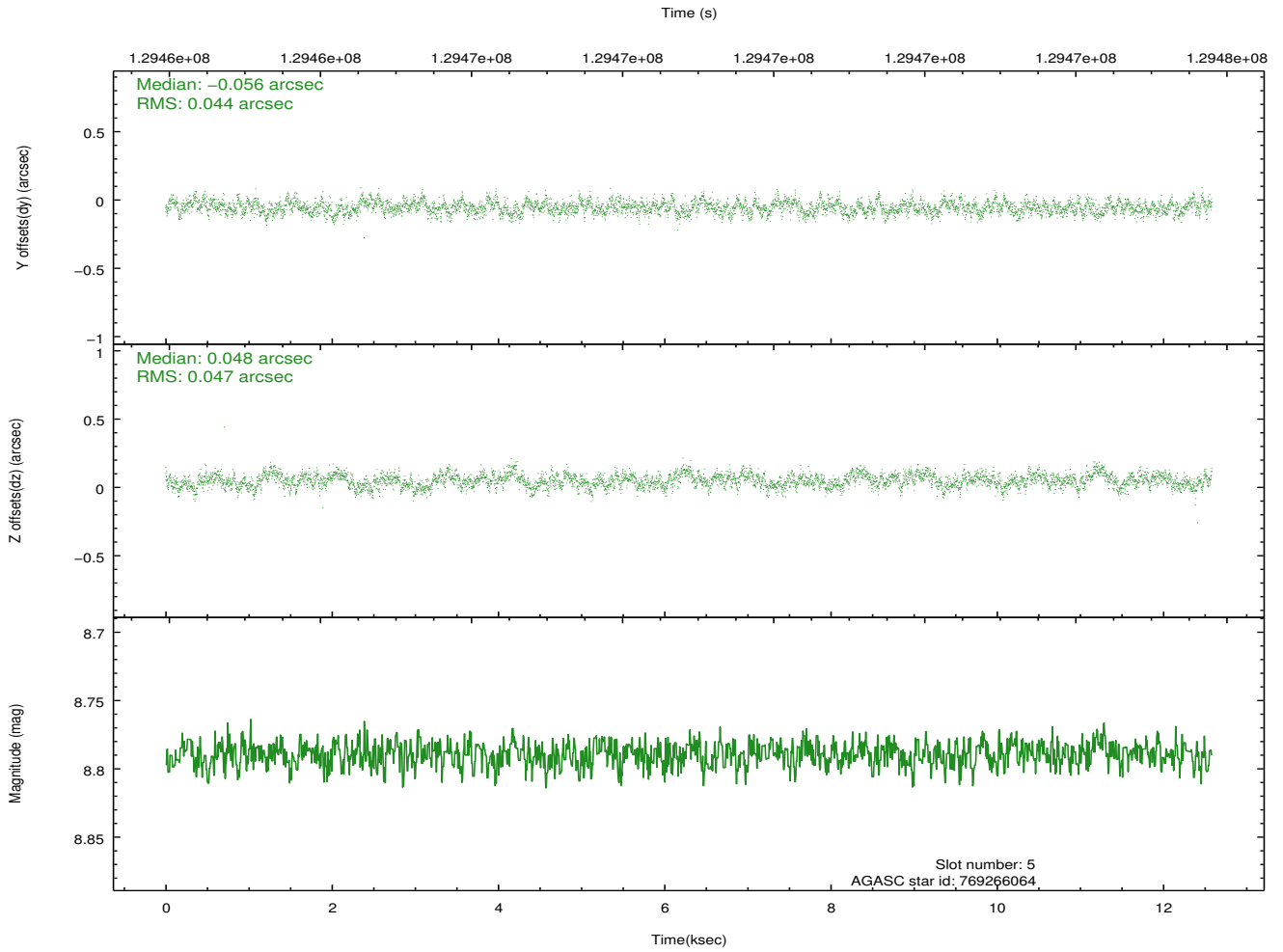
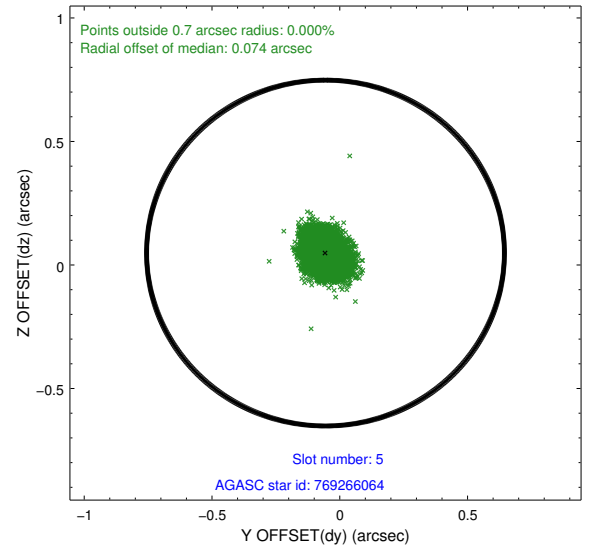
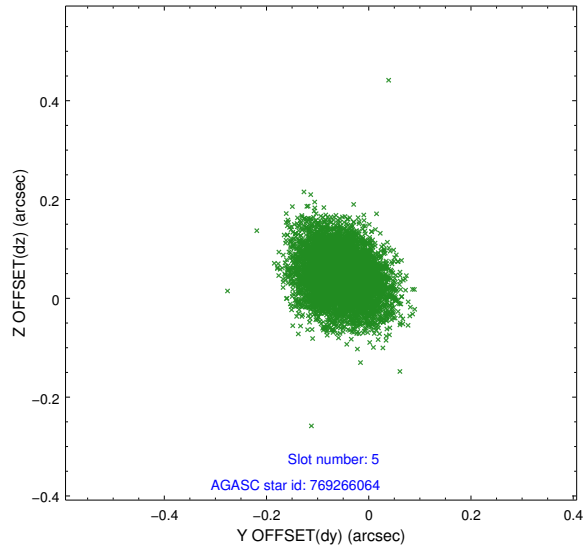
2.4.1 Slot 3



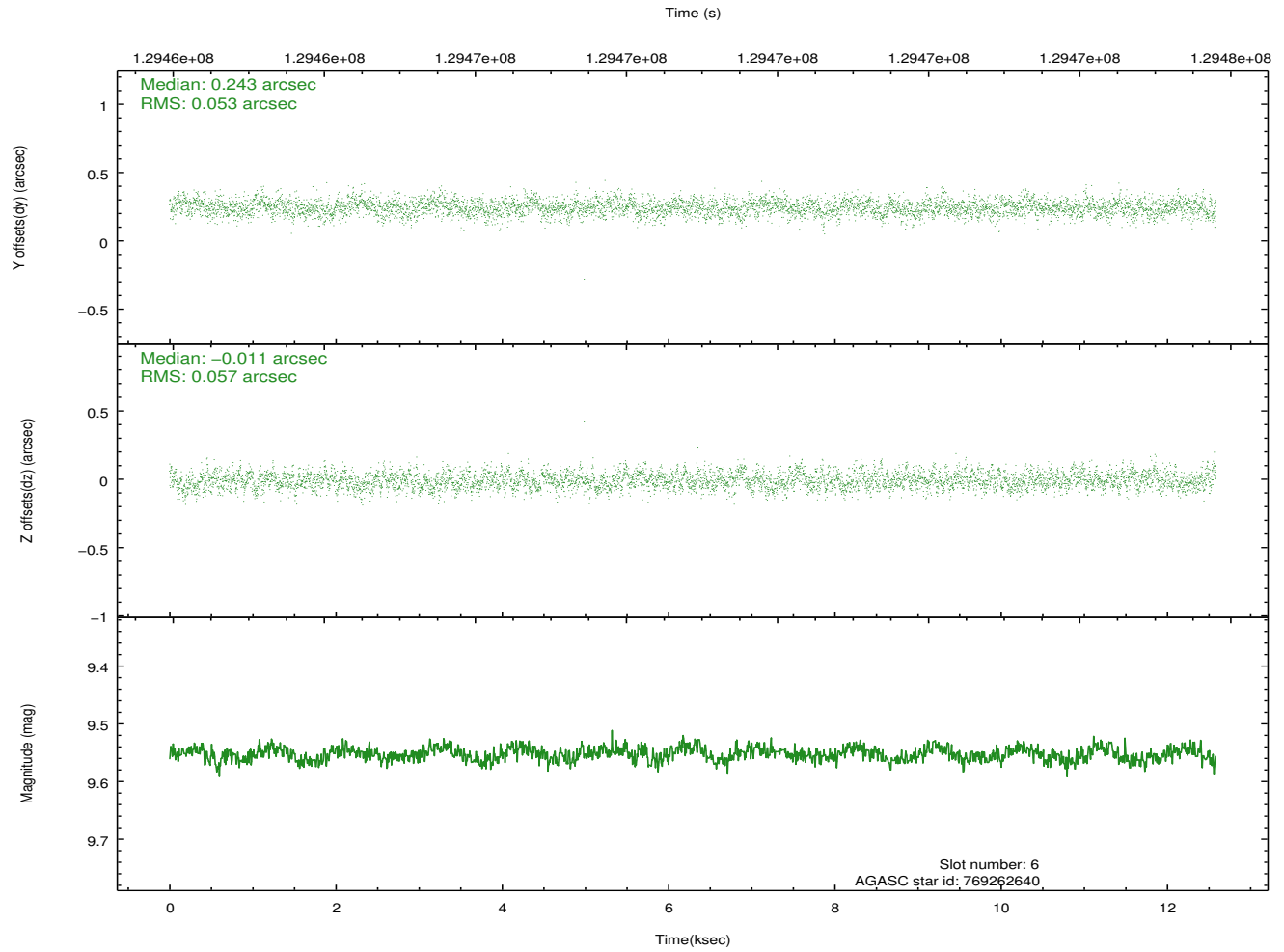
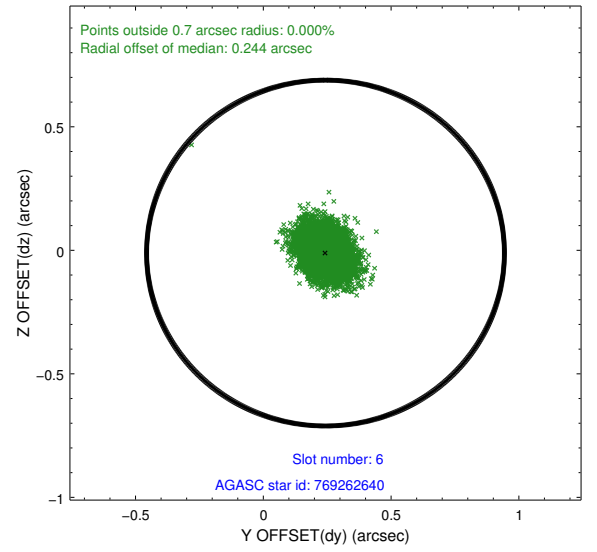
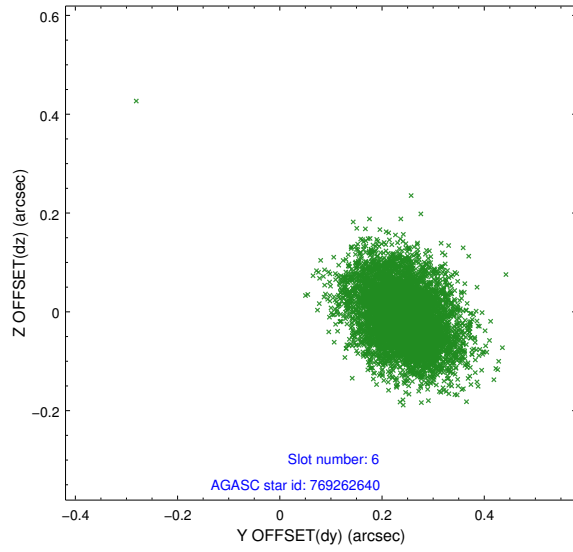
2.4.2 Slot 4



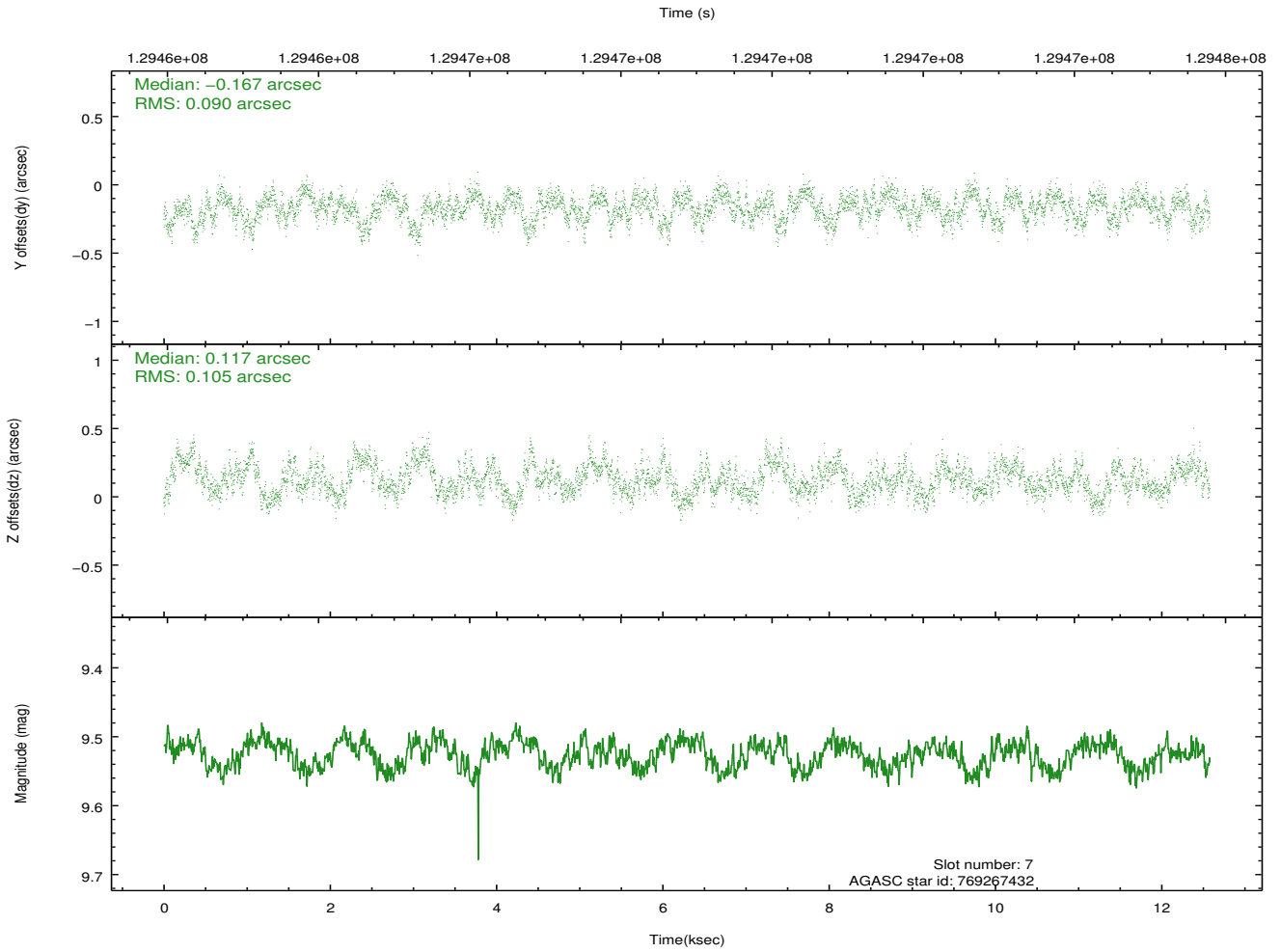
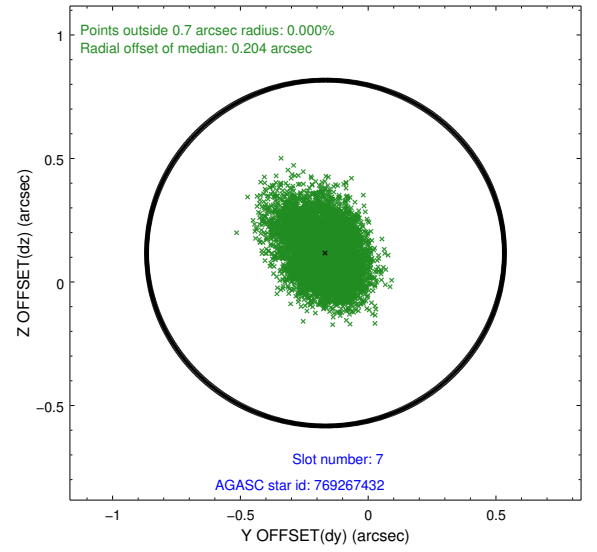
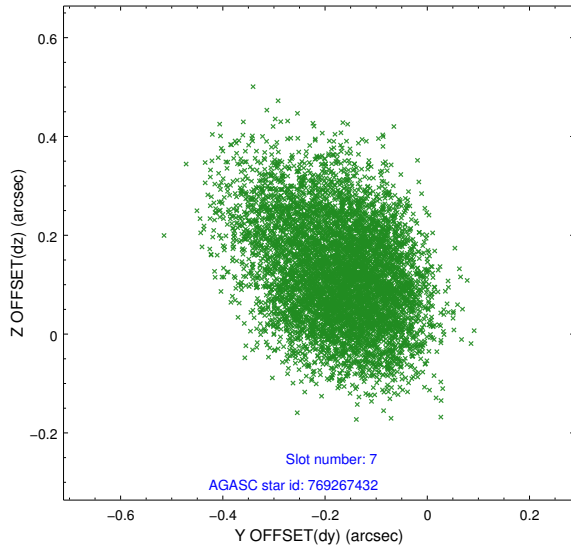
2.4.3 Slot 5



2.4.4 Slot 6

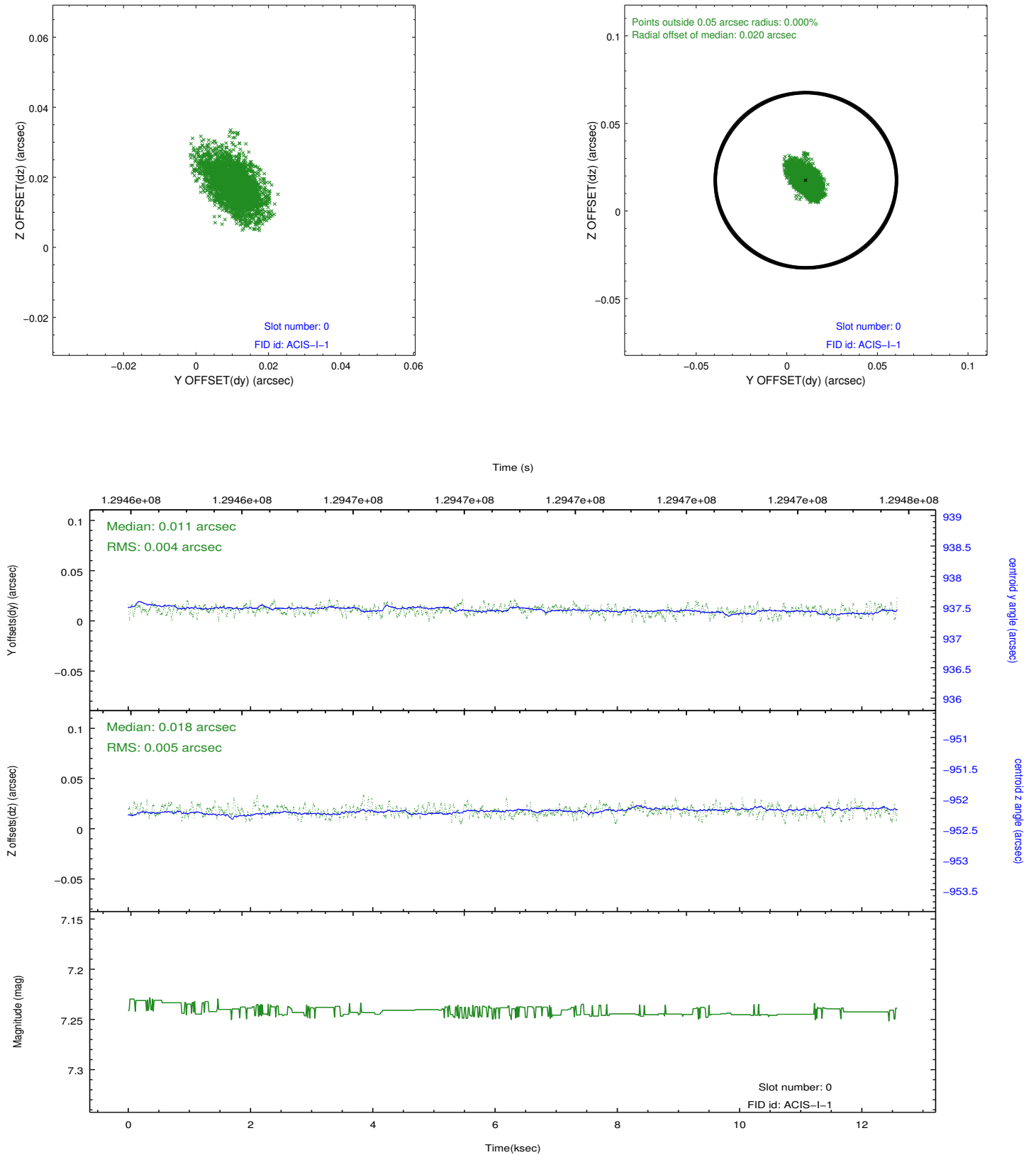


2.4.5 Slot 7

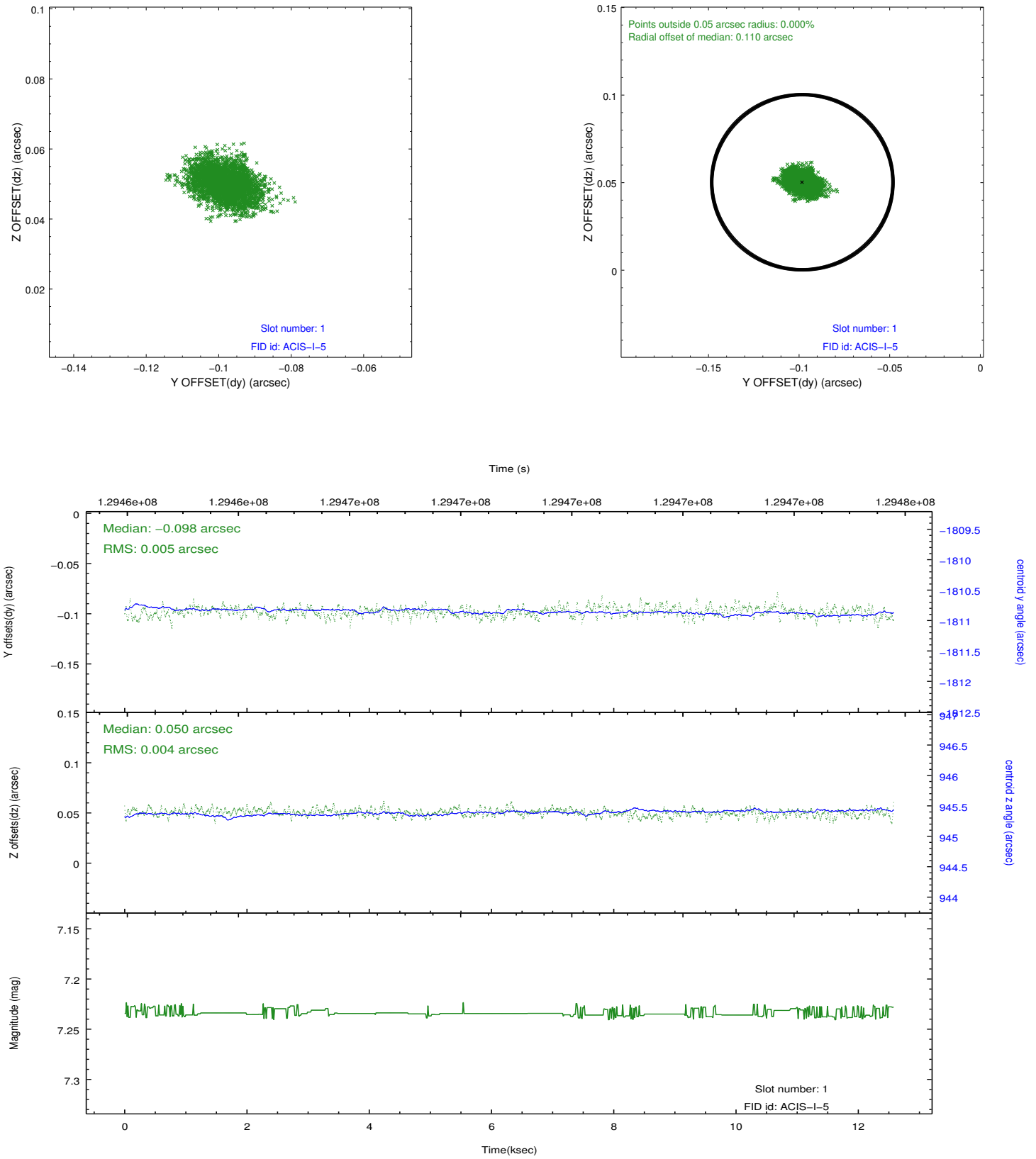


2.5 FID Slots

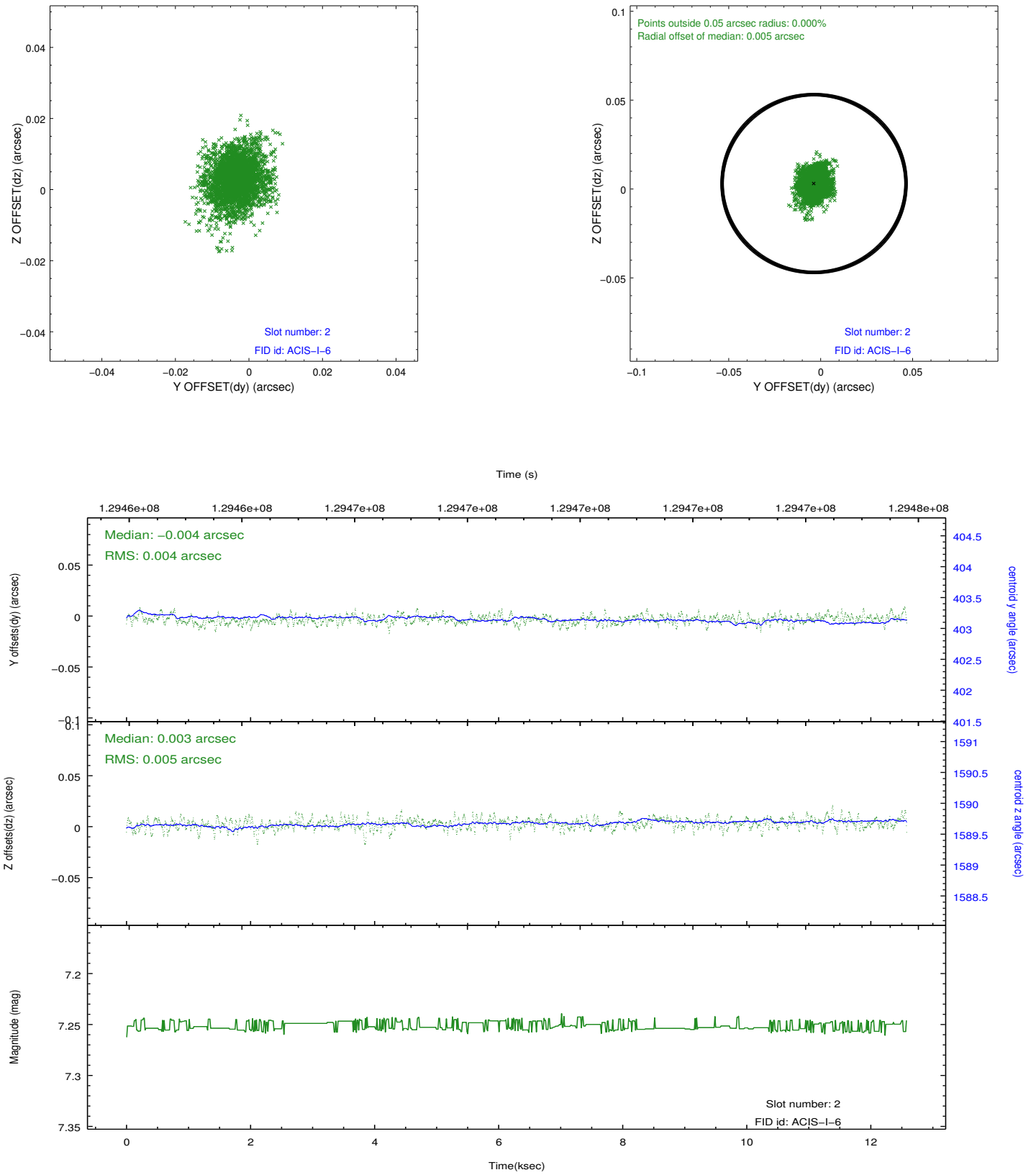
2.5.1 Slot 0



2.5.2 Slot 1



2.5.3 Slot 2



A Summary

A.1 Status

V&V Scientist	Beth Sundheim
V&V Date (YYYY-MM-DD)	2012.10.04
V&V Edition	1
V&V Disposition and Status	OK
V&V Charge Time	12.018

A.2 Comments