

# V&V Reference Report

## L2 ASCDS Version : 7.6.9

Observation 3265 - L2 Version 001  
Chandra X-Ray Center

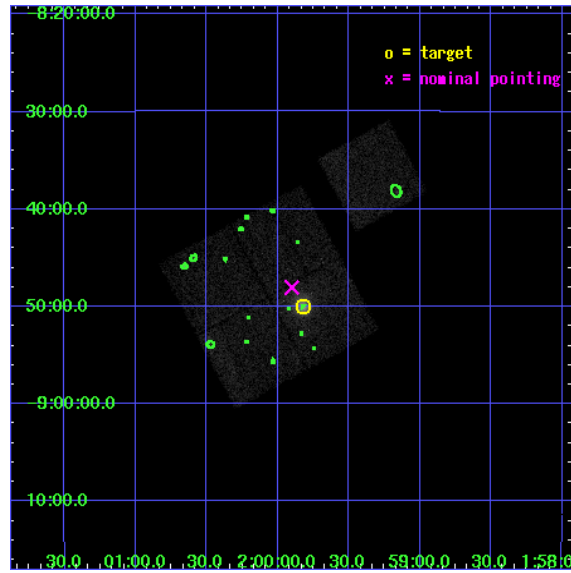
L2 Processing Date : Oct 5 2006

## Contents

<b>1</b>	<b>Front</b>	<b>2</b>
<b>2</b>	<b>OBI</b>	<b>3</b>
2.1	OBI . . . . .	3
2.1.1	Images . . . . .	3
2.1.2	Bias . . . . .	3
2.1.3	Parameters . . . . .	4
2.1.4	Events . . . . .	4
2.2	Compared Parameters . . . . .	5
2.3	Aspect . . . . .	6
2.4	Star Slots . . . . .	9
2.4.1	Slot 3 . . . . .	9
2.4.2	Slot 4 . . . . .	10
2.4.3	Slot 5 . . . . .	11
2.4.4	Slot 6 . . . . .	12
2.4.5	Slot 7 . . . . .	13
2.5	FID Slots . . . . .	14
2.5.1	Slot 0 . . . . .	14
2.5.2	Slot 1 . . . . .	15
2.5.3	Slot 2 . . . . .	16
<b>3</b>	<b>Point Sources</b>	<b>17</b>
<b>A</b>	<b>Summary</b>	<b>18</b>
A.1	Status . . . . .	18
A.2	Comments . . . . .	18

# 1 Front

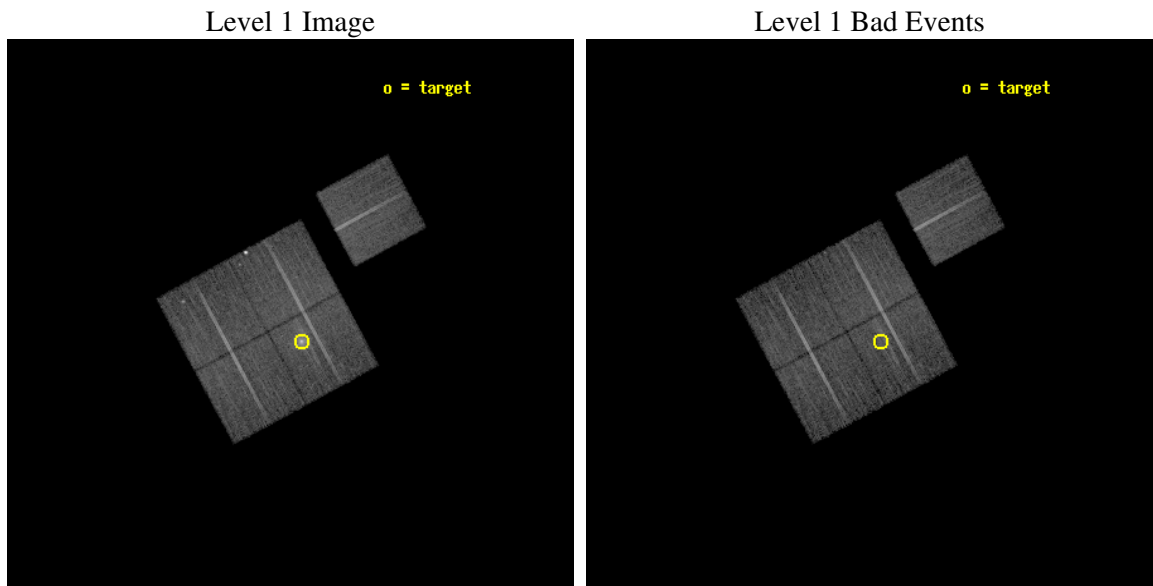
seq_num	800265
obs_id	3265
title	MACS: THE X-RAY PROPERTIES OF THE MOST MASSIVE GALAXY CLUSTERS AT $Z>0.3$
observer	Dr Harald Ebeling
object	MACSJ0159.8-0849
dtcycle	0
cycle	P
ra_targ	29.955417
dec_targ	-8.833056
ra_nom	29.975211187042
dec_nom	-8.800853468773
roll_nom	61.625408203947
revision	2
ontime	18138.018024653
livetime	17901.031466146
ontime0	18144.299965113
ontime1	18144.299965113
ontime2	18141.158994853
ontime3	18138.018024653
ontime6	18144.299965113
l2events	56099



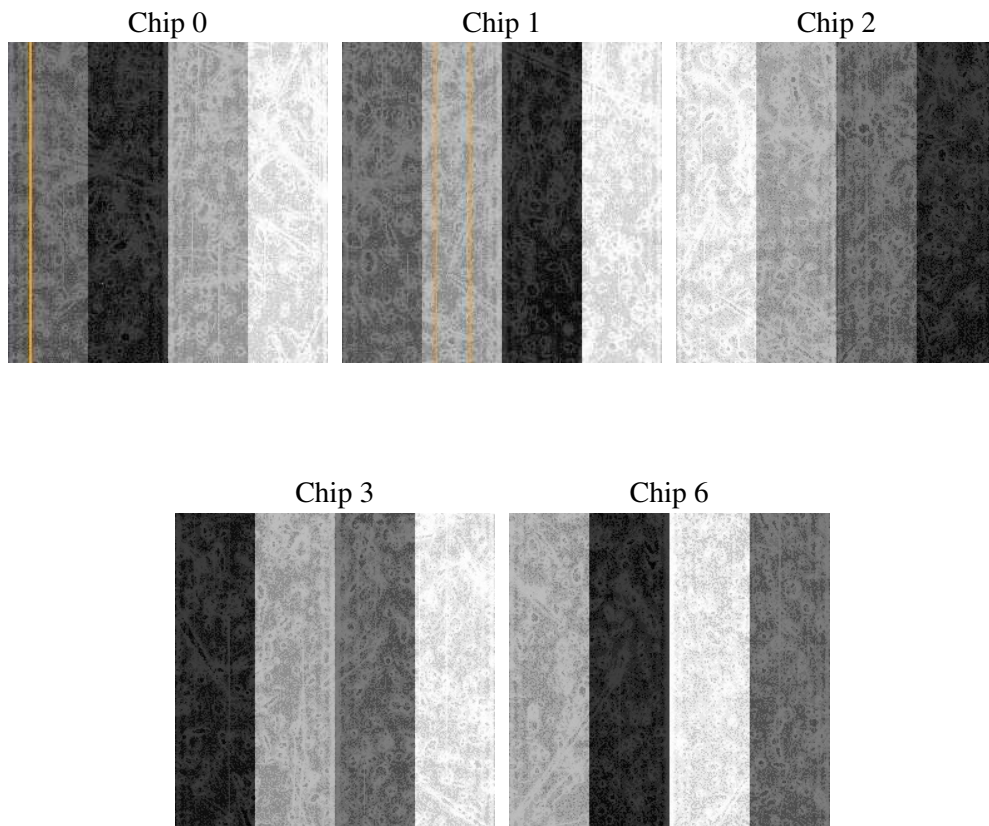
## 2 OBI

### 2.1 OBI

#### 2.1.1 Images



#### 2.1.2 Bias



### 2.1.3 Parameters

obi_num	0
ascdsver	7.6.9
caldbver	3.2.3
date	2006-10-05T16:36:50
revision	2

sched_exp_time	18000.000000
ontime	18858.606526166
ontime0	18883.734367818
ontime1	18880.59371677
ontime2	18846.042605311
ontime3	18858.606526166
ontime6	18921.42686817
l1events	608837

### 2.1.4 Events

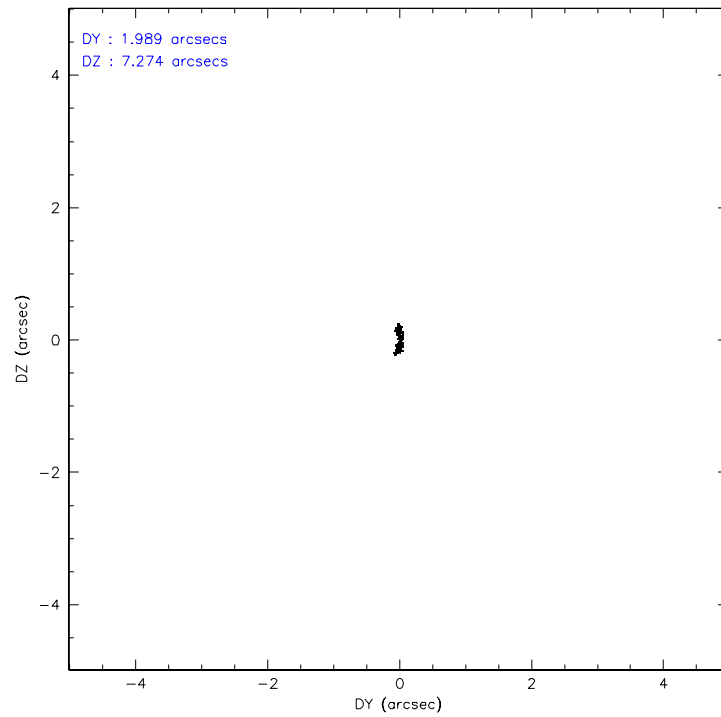
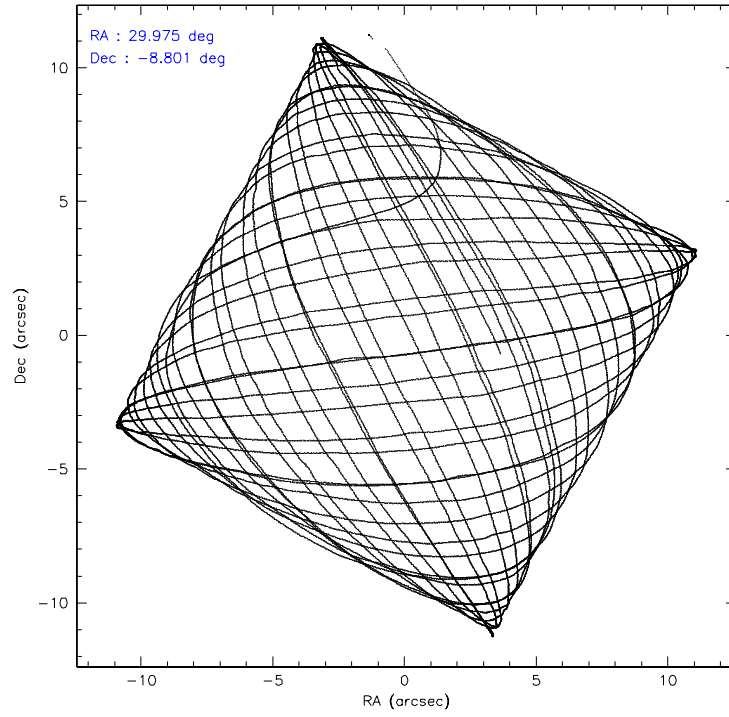
	ccd 0	ccd 1	ccd 2	ccd 3	ccd 6
level 1 events	113163	114342	130725	126728	123879
rejected events	103095	103084	116136	107893	113587
rejected %	91%	90%	88%	85%	91%

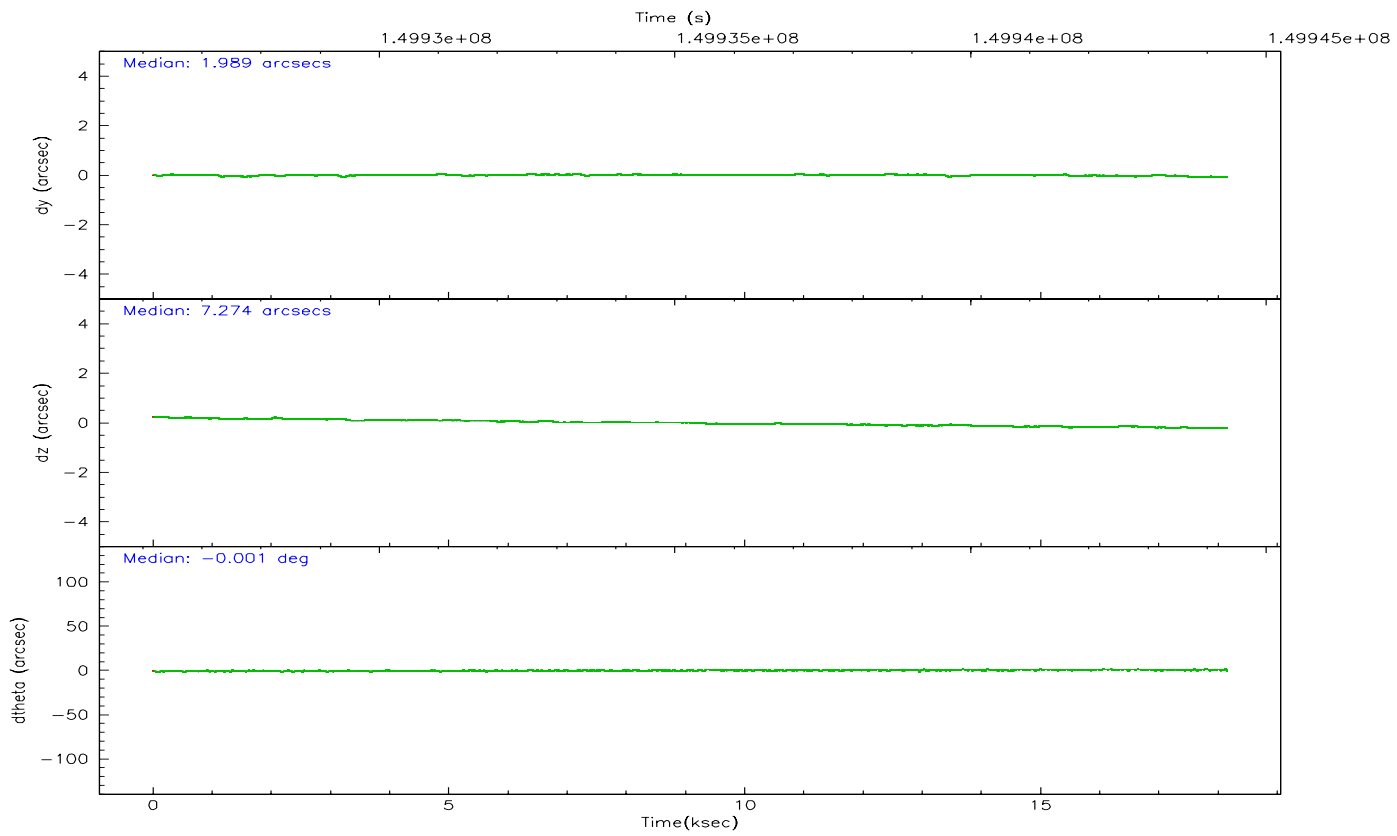
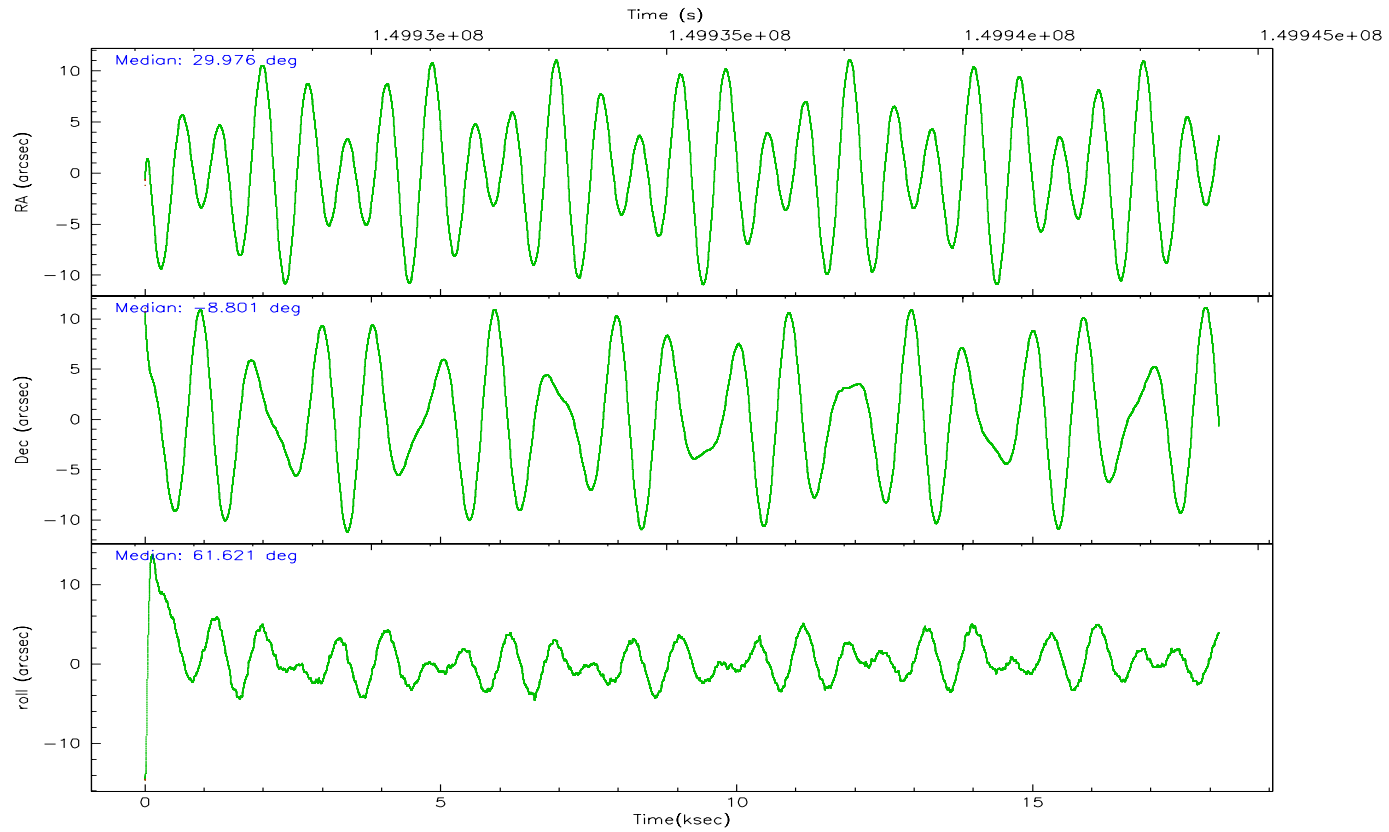
	ccd 0	ccd 1	ccd 2	ccd 3	ccd 6
grade 0 events	12865	13580	16969	20669	14026
	11%	11%	12%	16%	11%
grade 1 events	81	96	167	144	87
	0%	0%	0%	0%	0%
grade 2 events	5062	5510	5436	5798	5339
	4%	4%	4%	4%	4%
grade 3 events	2267	2315	2348	2422	2350
	2%	2%	1%	1%	1%
grade 4 events	2066	2287	2314	2386	2380
	1%	2%	1%	1%	1%
grade 5 events	3611	3786	3408	4028	3998
	3%	3%	2%	3%	3%
grade 6 events	4137	4672	4099	4272	5085
	3%	4%	3%	3%	4%
grade 7 events	83074	82096	95984	87009	90614
	73%	71%	73%	68%	73%

## 2.2 Compared Parameters

Parameter	Planned	Actual	Parameter	Planned	Actual
Instrument	ACIS	ACIS	Obspar format version number	6	6
Detector	ACIS-01236	ACIS-01236	Obspar file type	PREDICTED	ACTUAL
Grating	NONE	NONE	Obspar update status	NONE	UPDATED
Data mode	VFAINT	VFAINT	Number of optional ACIS chips dropped	0	0
Observation mode	POINTING	POINTING	On-chip summing requested	N	N
Pointing RA	29.976115	29.97521118704159	Subarray requested	NONE	NONE
Pointing Dec	-8.828259	-8.800853468772981	Alternating exposures requested	N	N
Pointing Roll	61.416879	61.62540820394669	Primary exposure time	0.000000	3.1
SIM focus pos (mm)	-0.782348	-0.7809083437167272			
SIM defocus (mm)	0	0.001439871863259334			
SIM translation stage pos (mm)	-227.742463	-227.734108438797			
SIM translation stage offset (mm)	-5.85	-5.858344564132665			
Observation start time	149926332.184000	149924362.10343			
Observation start date	2002-10-02T06:11:08	2002-10-02T05:39:22			
Observation end time	149944332.184000	149946137.20433			
Observation end date	2002-10-02T11:11:08	2002-10-02T11:42:17			
Read mode	TIMED	TIMED			

## 2.3 Aspect





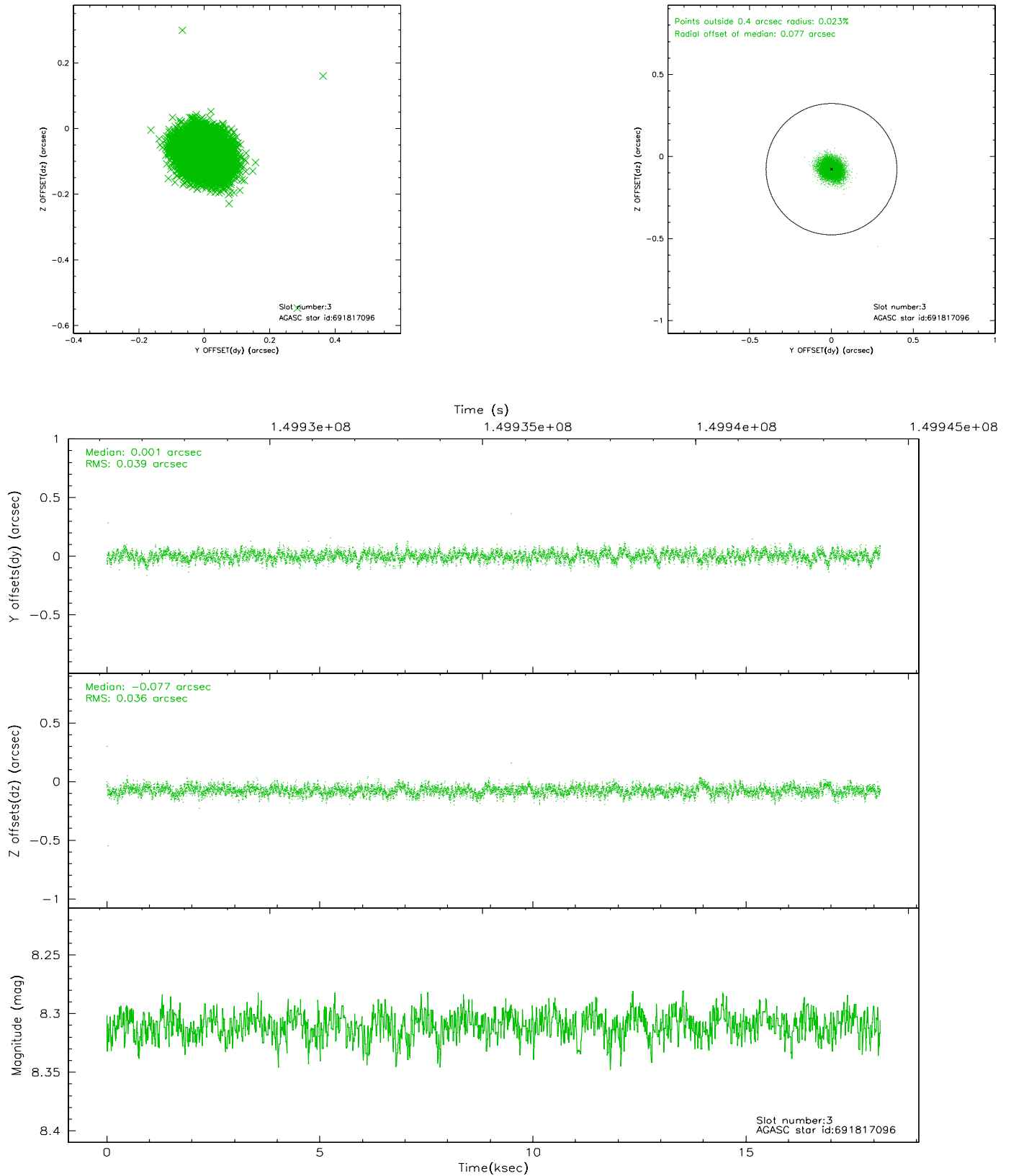
### Slot Statistics

slot	status	id	mag	n_pts	med_dy	med_dz	dr1	dr2	ra	dec	mean_y	mean_z
0	FID	ACIS-I-1	7.24	4428	0.025	0.031	0.009	0.015	0.000000	0.000000	937.74	-950.89
1	FID	ACIS-I-5	7.23	4428	-0.102	0.069	0.008	0.013	0.000000	0.000000	-1810.35	946.53
2	FID	ACIS-I-6	7.25	4428	-0.014	-0.029	0.008	0.013	0.000000	0.000000	403.03	1591.17
3	GUIDE	691817096	8.31	8795	0.001	-0.077	0.055	0.091	29.769058	-8.981725	-837.39	383.12
4	GUIDE	691814104	8.87	8855	-0.015	0.134	0.075	0.119	30.197239	-9.598726	-2060.23	-2015.33
5	GUIDE	691810904	9.05	8855	-0.090	0.022	0.081	0.130	29.876683	-8.010454	2415.43	1721.01
6	GUIDE	691811024	8.91	8855	0.021	-0.034	0.071	0.111	29.791583	-8.363095	1156.29	1379.68
7	GUIDE	692204744	9.34	8848	0.084	-0.043	0.122	0.207	30.881810	-8.596523	2272.23	-2432.35

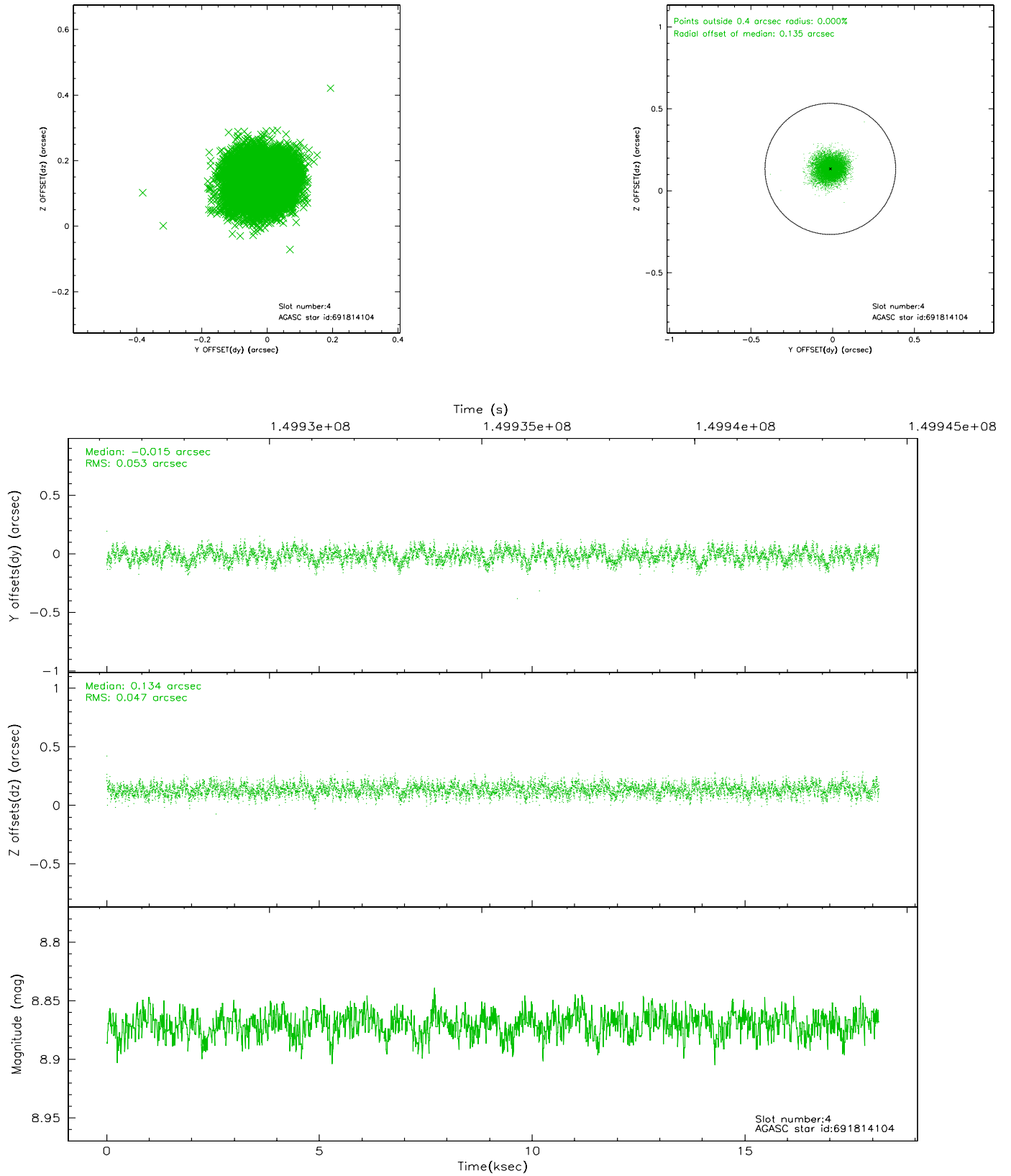


## 2.4 Star Slots

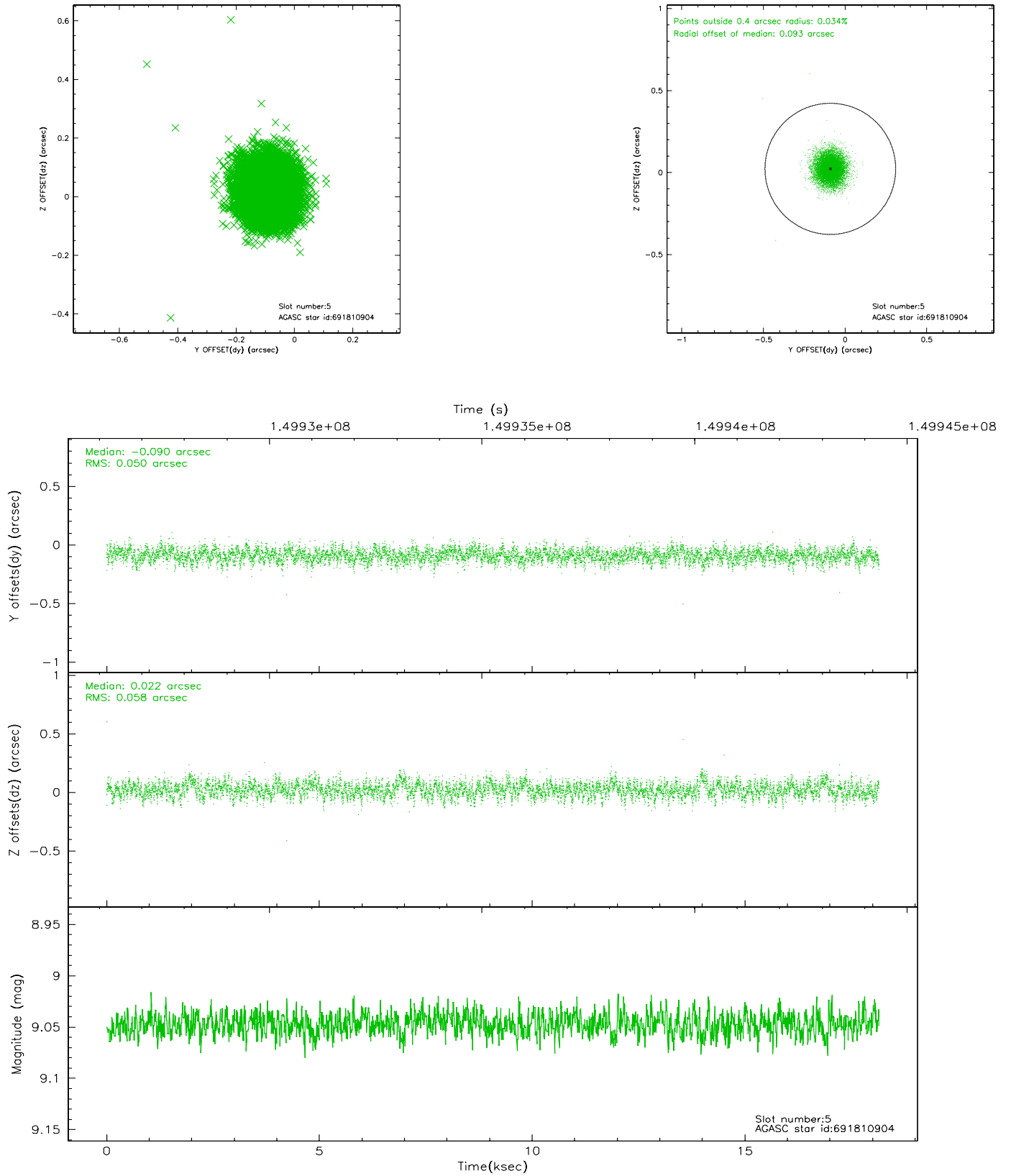
### 2.4.1 Slot 3



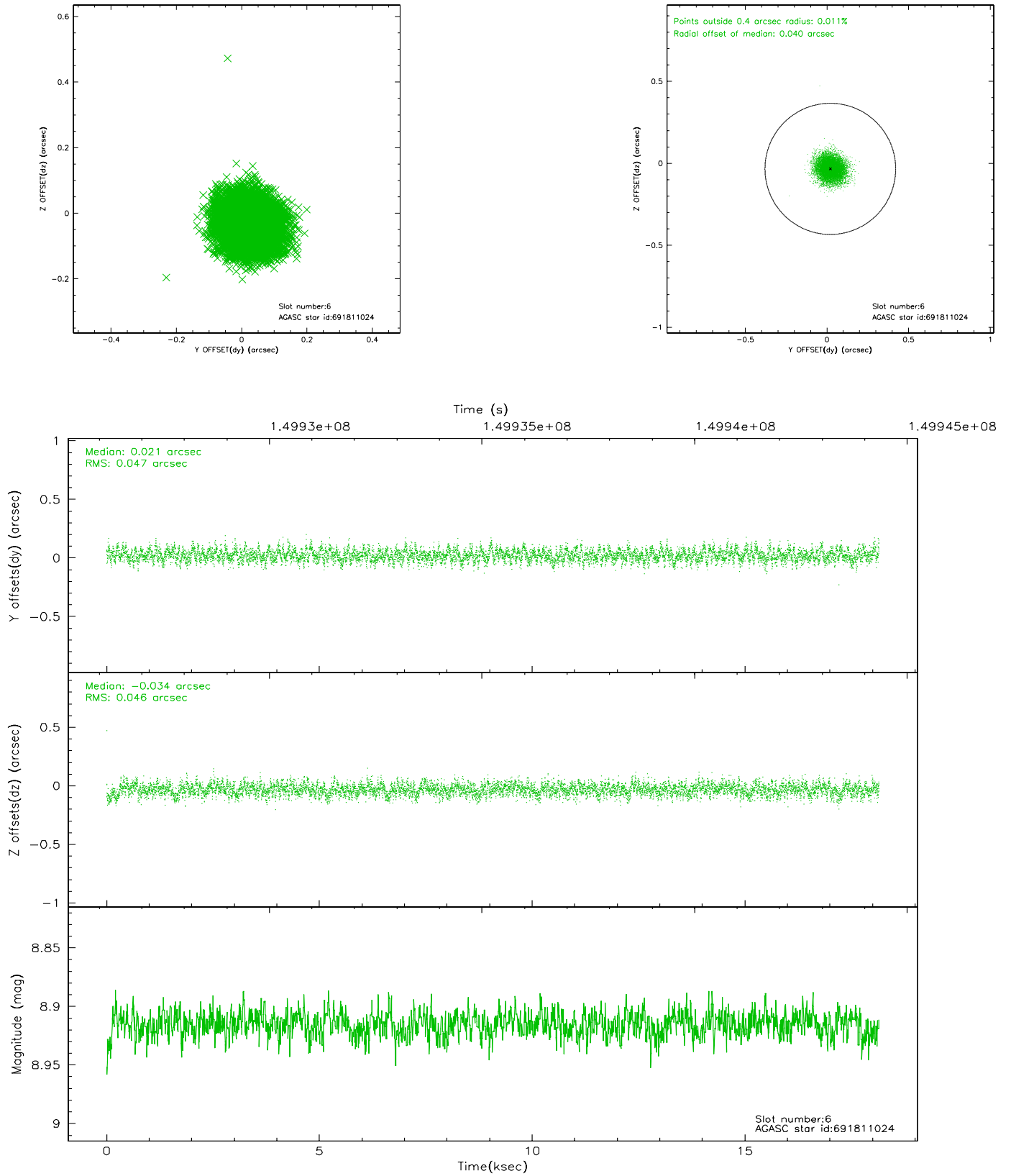
## 2.4.2 Slot 4



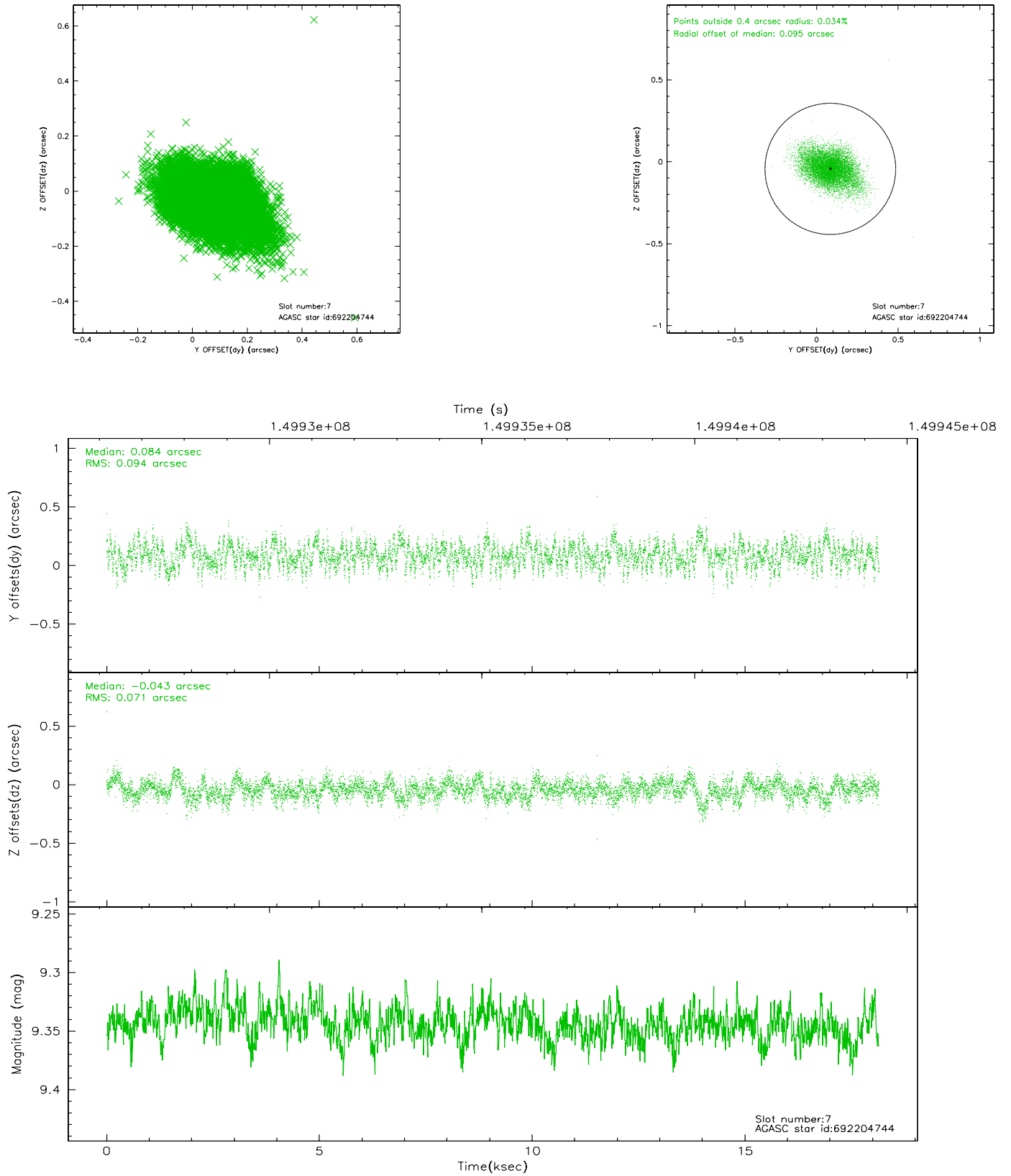
### 2.4.3 Slot 5



## 2.4.4 Slot 6

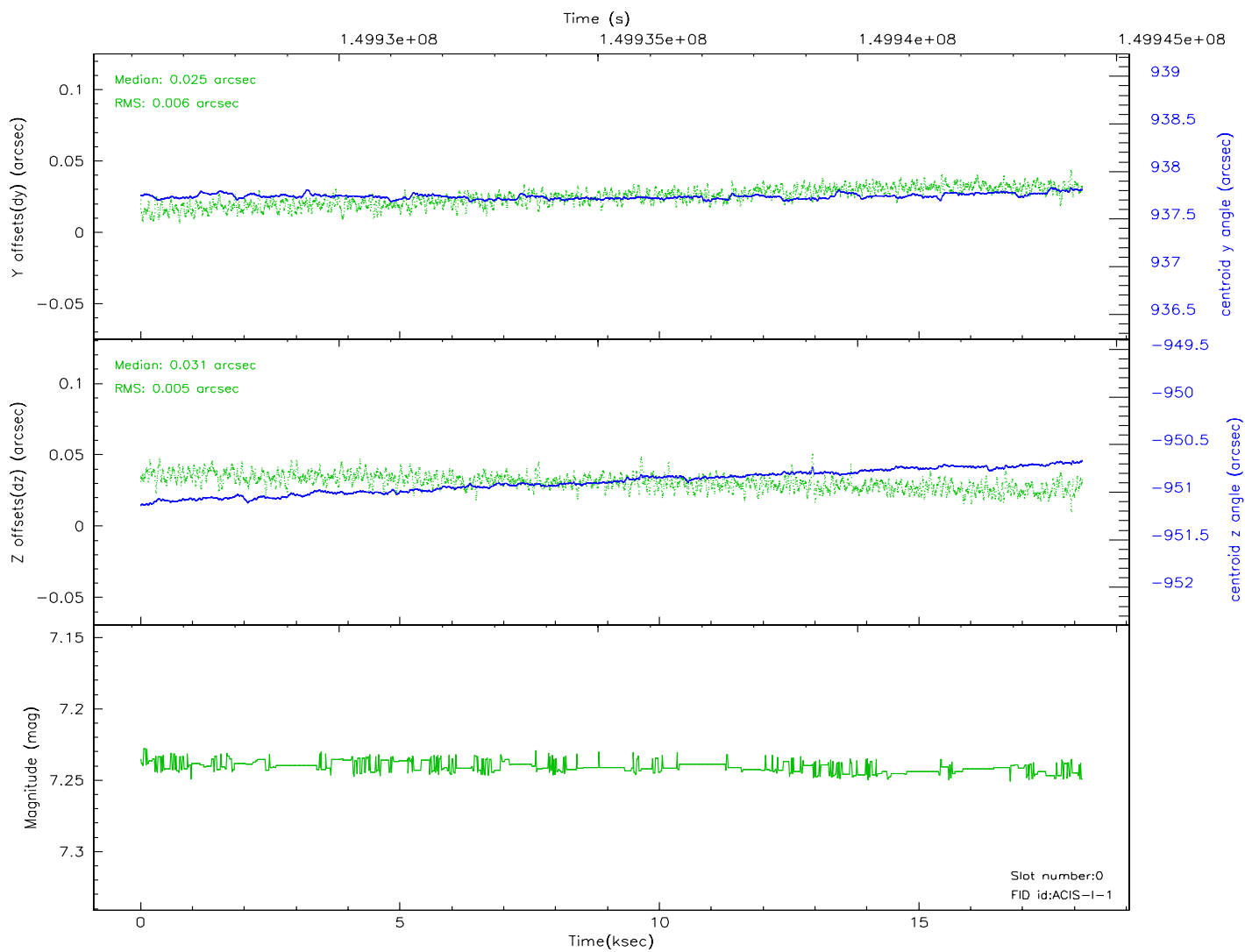
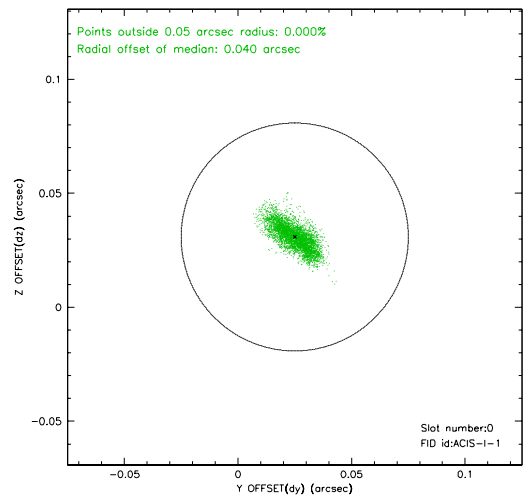
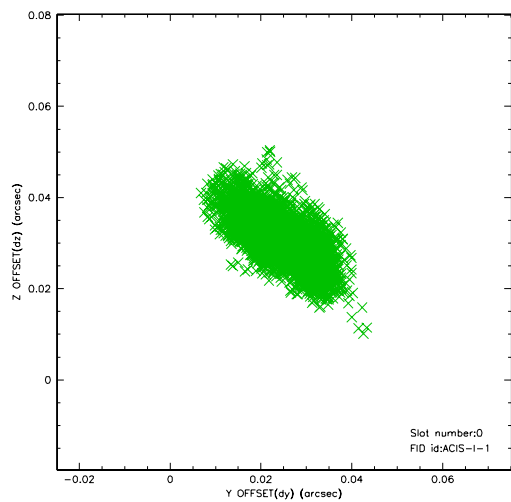


## 2.4.5 Slot 7

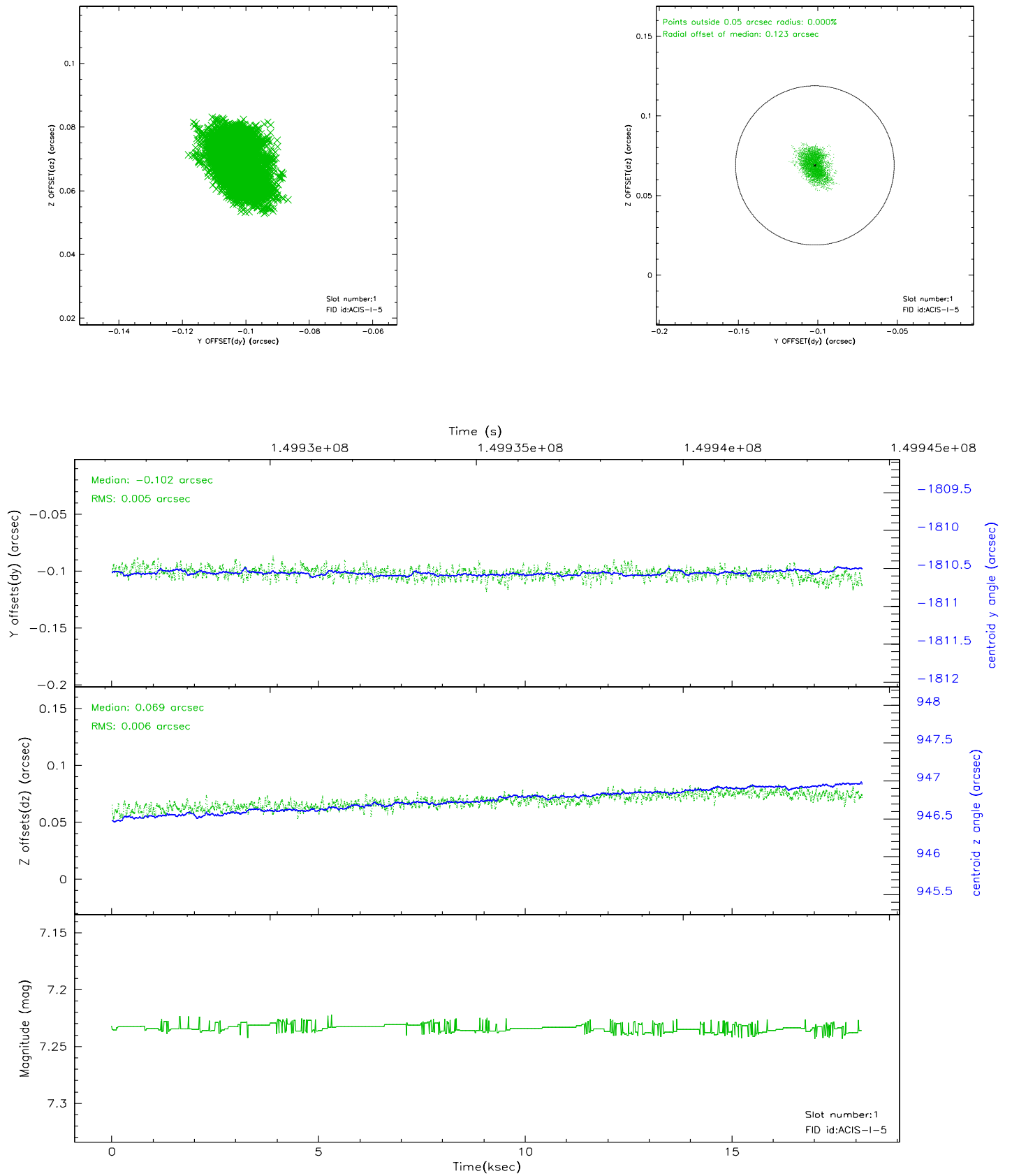


## 2.5 FID Slots

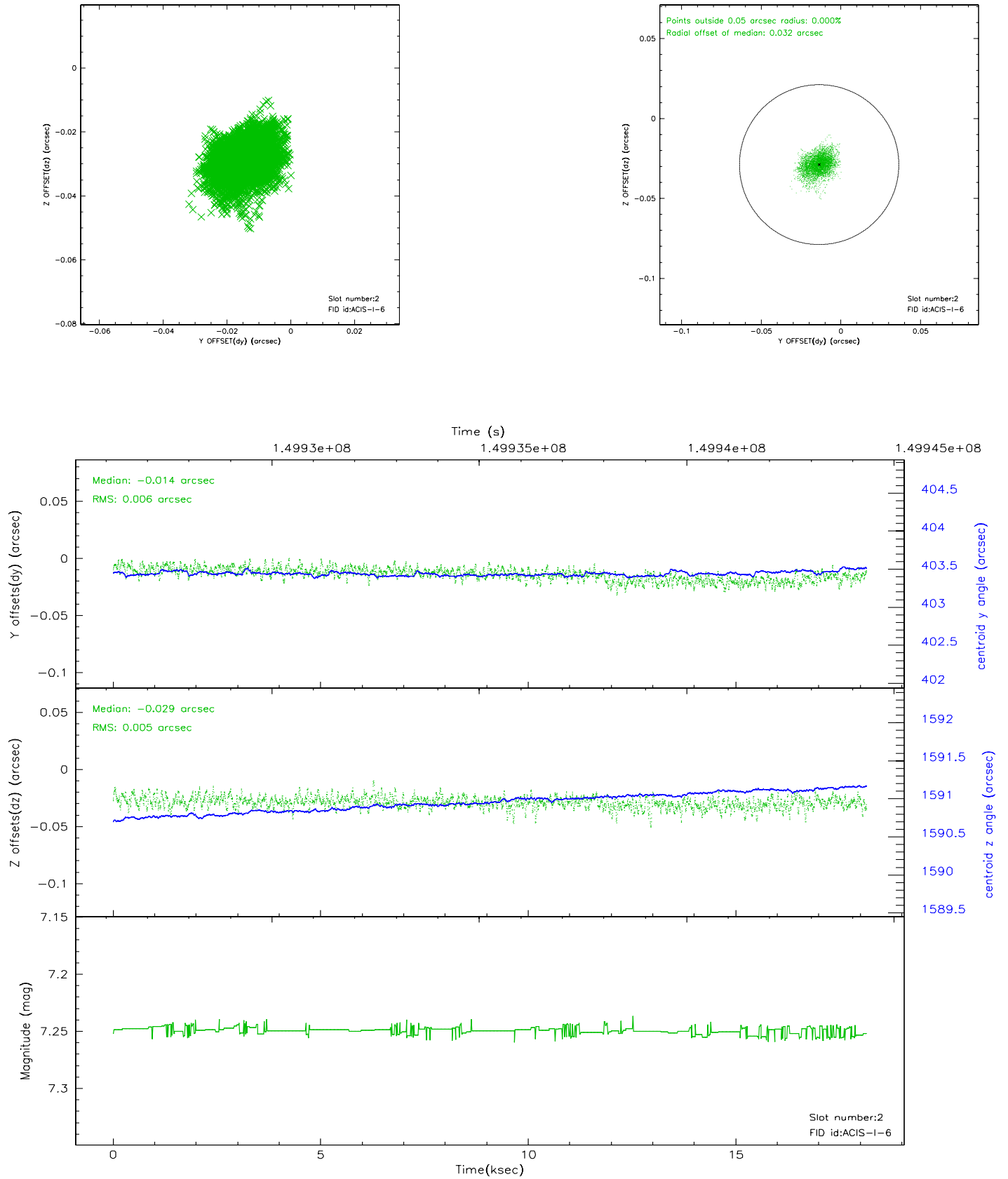
### 2.5.1 Slot 0



## 2.5.2 Slot 1

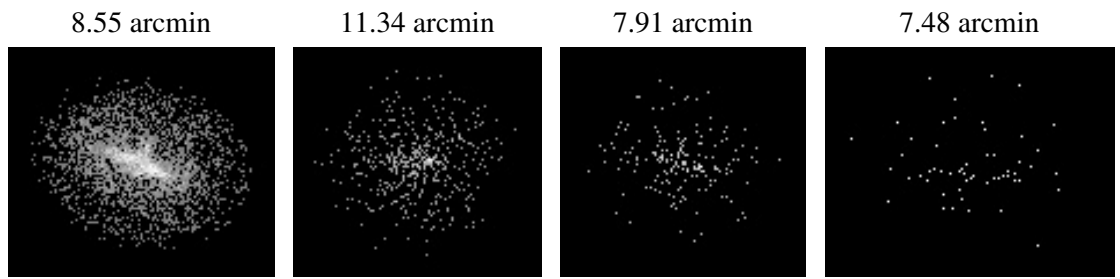


### 2.5.3 Slot 2





### 3 Point Sources



## A Summary

### A.1 Status

V&V Scientist	Jen Lauer
V&V Date (YYYY-MM-DD)	2006.10.05
V&V Edition	1
V&V Disposition and Status	OK
V&V Charge Time	18.138

### A.2 Comments