

V&V Reference Report

L2 ASCDS Version : 8.4.5

Observation 3263 - L2 Version 3
Chandra X-Ray Center

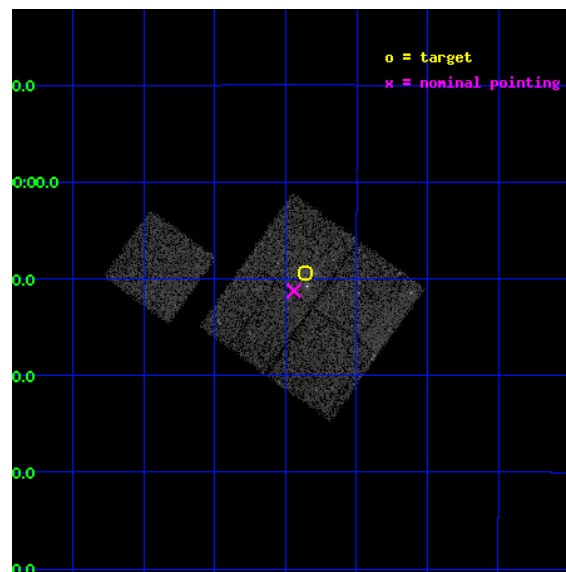
L2 Processing Date : Sep 28 2012

Contents

1	Front	2
2	OBI	3
2.1	OBI	3
2.1.1	Images	3
2.1.2	Bias	3
2.1.3	Parameters	4
2.1.4	Events	4
2.2	Compared Parameters	5
2.3	Aspect	6
2.4	Star Slots	9
2.4.1	Slot 3	9
2.4.2	Slot 4	10
2.4.3	Slot 5	11
2.4.4	Slot 6	12
2.4.5	Slot 7	13
2.5	FID Slots	14
2.5.1	Slot 0	14
2.5.2	Slot 1	15
2.5.3	Slot 2	16
A	Summary	17
A.1	Status	17
A.2	Comments	17

1 Front

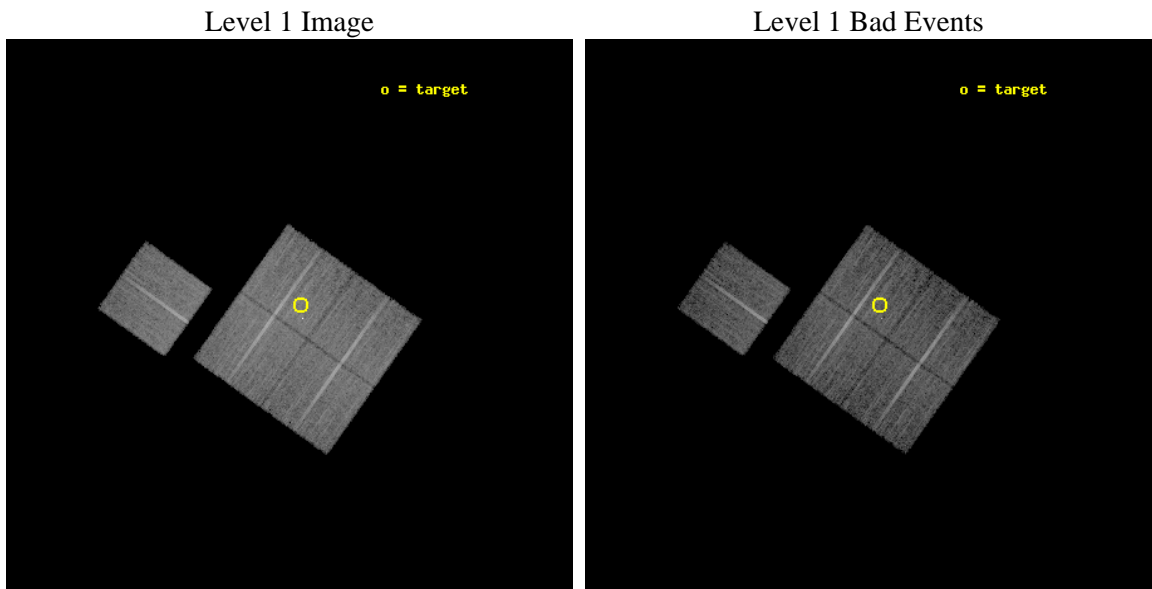
seq_num	800263	Sequence number
obs_id	3263	Observation id
title	MACS: THE X-RAY PROPERTIES OF THE MOST MASSIVE GALAXY CLUSTERS AT $Z>0.3$	Proposal title
observer	Dr. Harald Ebeling	Principal investigator
object	MACSJ0047.3-0810	Source name
dtcycle	0	
cycle	P	events from which exps? Prim/Second/Both
ra_targ	11.84	Observer's specified target RA [deg]
dec_targ	-8.155833	Observer's specified target Dec [deg]
ra_nom	11.860485792928	Nominal RA [deg]
dec_nom	-8.1876510242719	Nominal Dec [deg]
roll_nom	305.48712498151	Nominal Roll [deg]
revision	3	Processing version of data
ontime	14135.99997282	Sum of GTIs [s]
livetime	13951.302726404	Livetime [s]
ontime0	14126.577042148	Sum of GTIs [s]
ontime1	14135.99997282	Sum of GTIs [s]
ontime2	14135.99997282	Sum of GTIs [s]
ontime3	14135.99997282	Sum of GTIs [s]
ontime6	14135.99997282	Sum of GTIs [s]
l2events	35316	Number of level 2 events



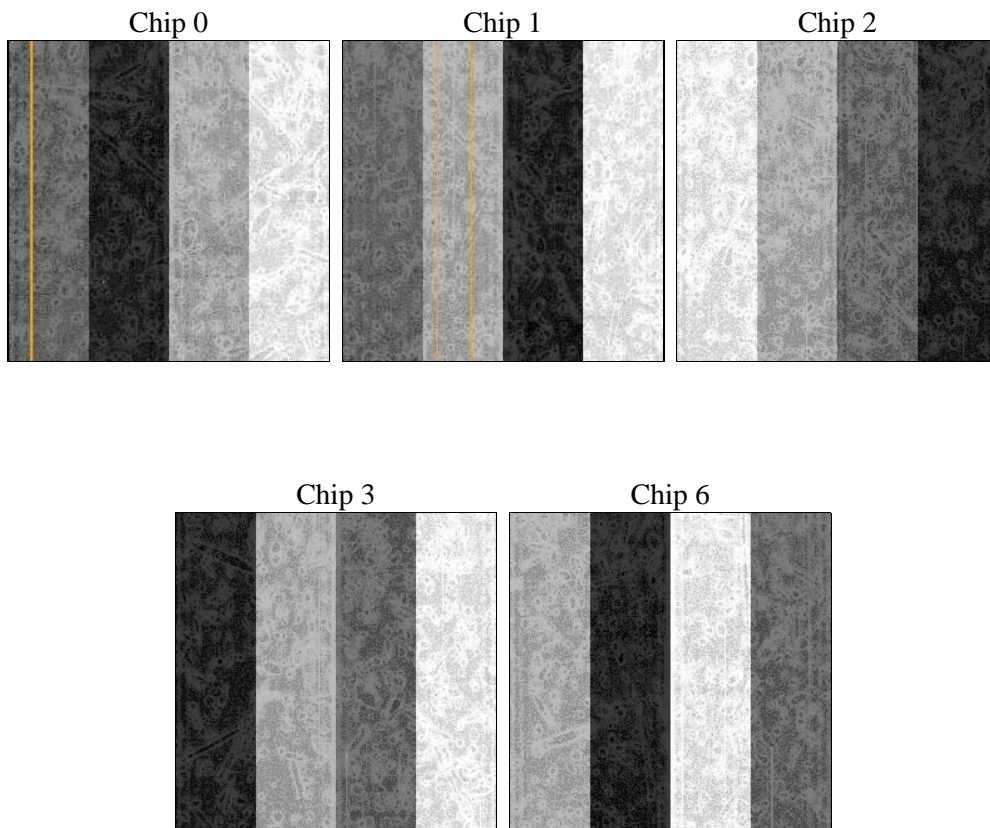
2 OBI

2.1 OBI

2.1.1 Images



2.1.2 Bias



2.1.3 Parameters

obi_num	1	Obi number	sched_exp_time	14000.000000	[s] Scheduled observation exposure time
ascdsver	8.4.5	Processing system revision	ontime	14135.99997282	Sum of GTIs [s]
caldsver	4.5.2	 	ontime0	14126.577042148	Sum of GTIs [s]
date	2012-09-28T06:22:06	Date and time of file creation	ontime1	14135.99997282	Sum of GTIs [s]
revision	3	Processing version of data	ontime2	14135.99997282	Sum of GTIs [s]
			ontime3	14135.99997282	Sum of GTIs [s]
			ontime6	14135.99997282	Sum of GTIs [s]
			l1events	410095	Number of level 1 events

2.1.4 Events

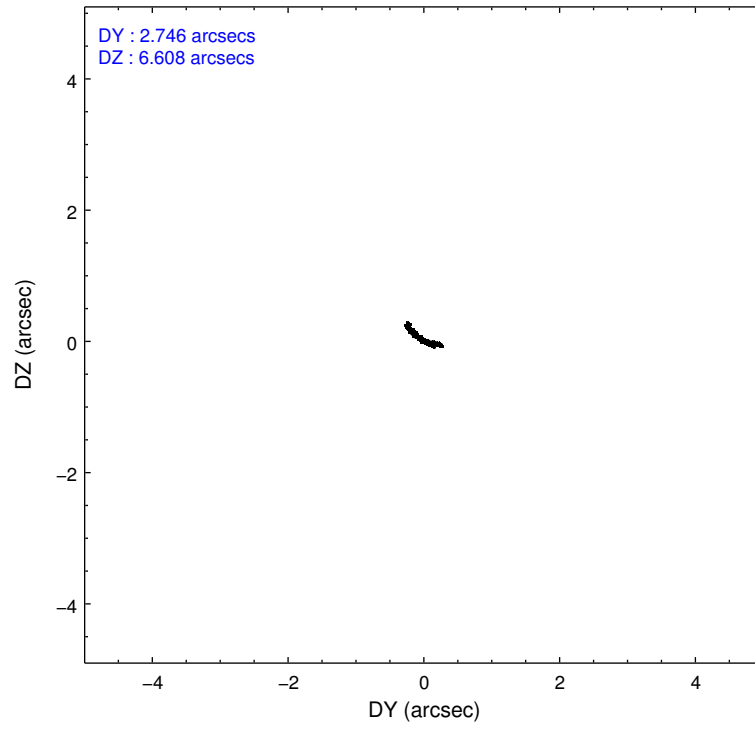
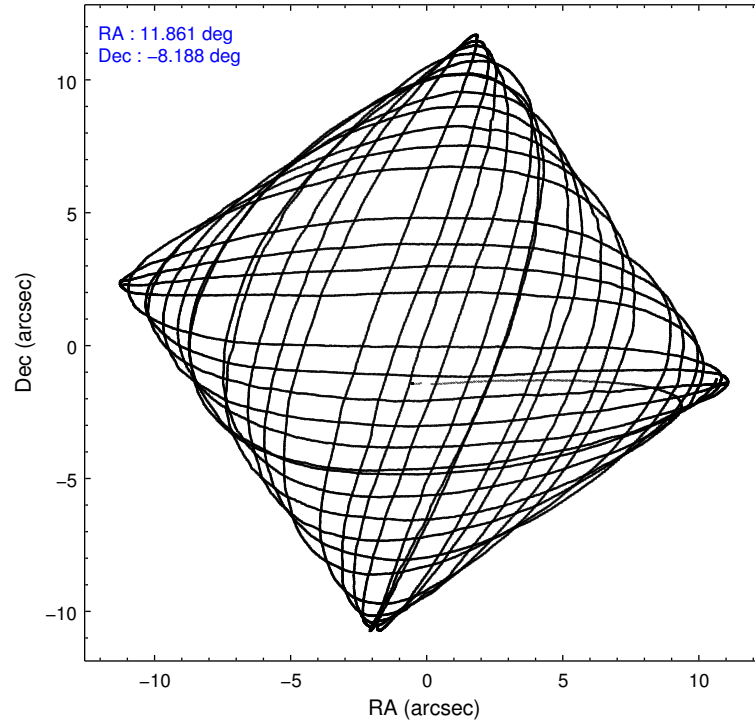
	ccd 0	ccd 1	ccd 2	ccd 3	ccd 6
level 1 events	75473	77019	87746	89101	80756
rejected events	67902	68198	79872	78595	73118
rejected %	89%	88%	91%	88%	90%

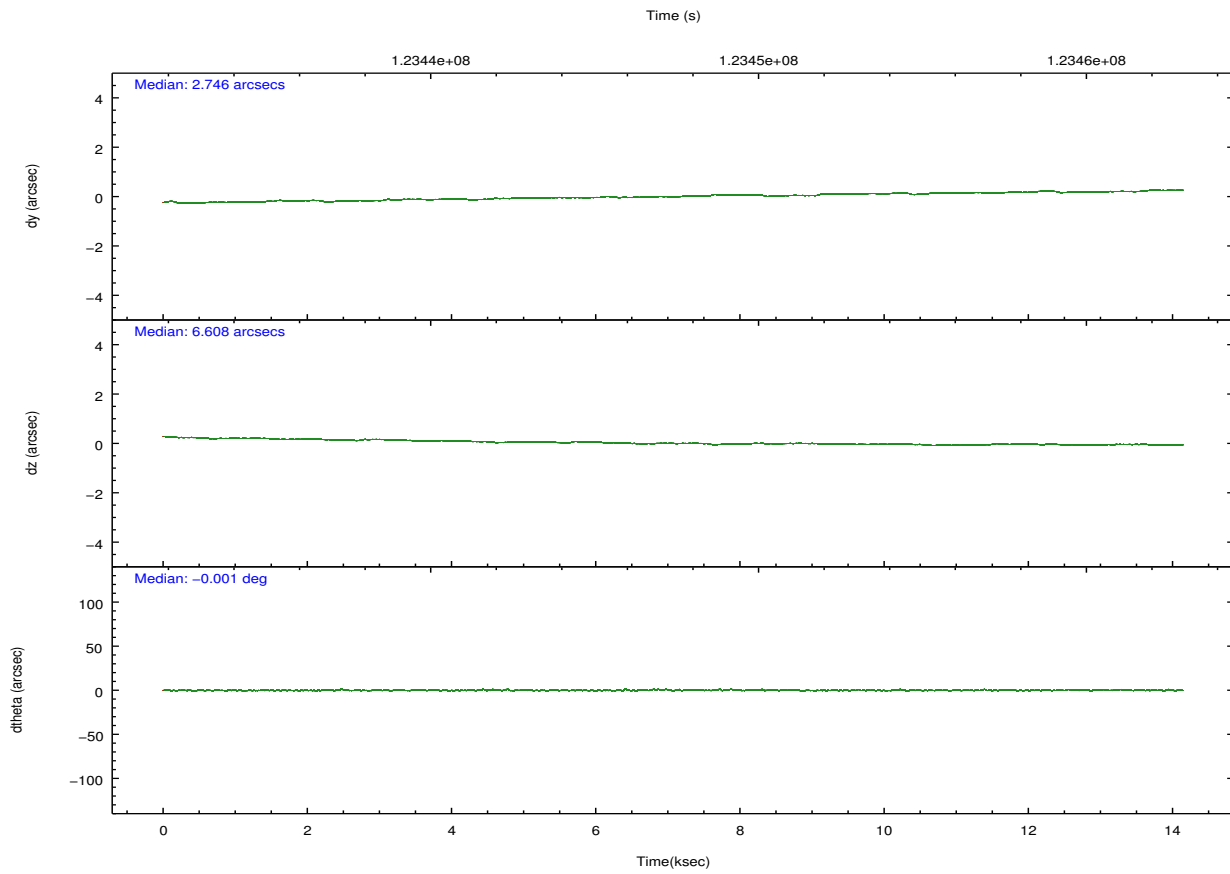
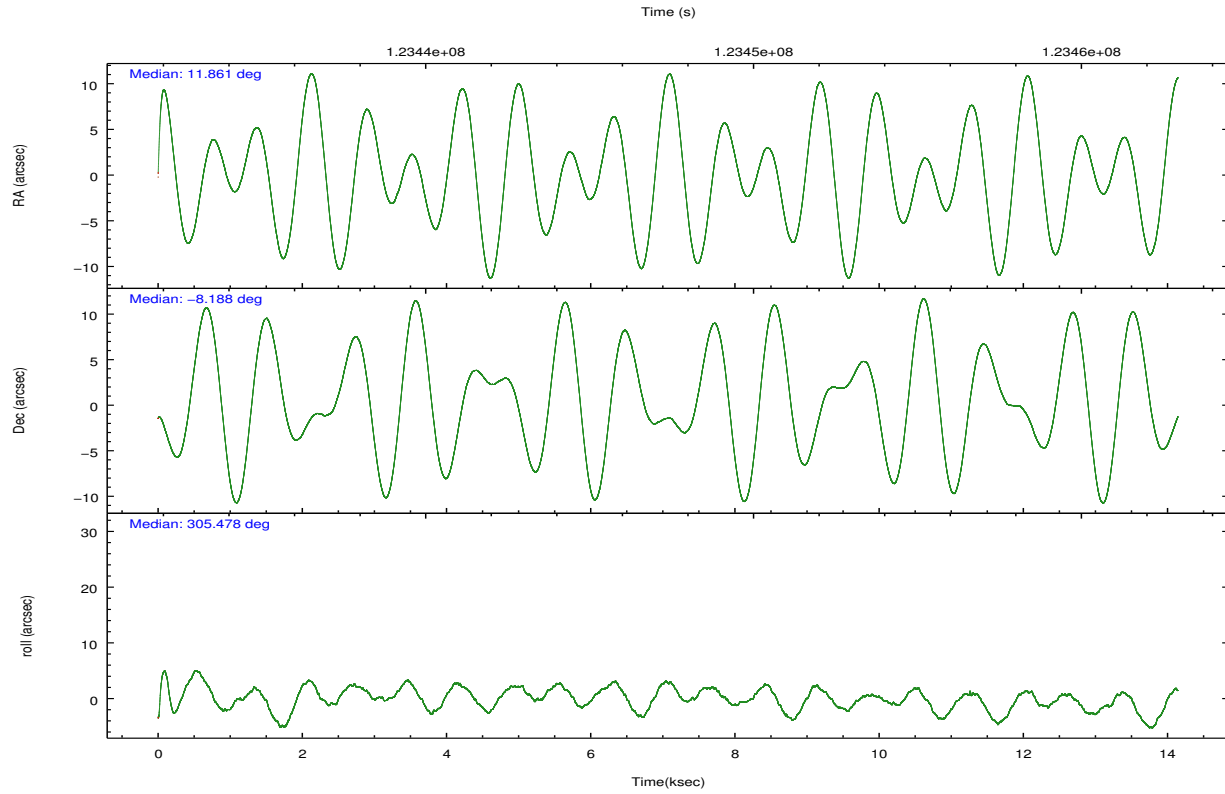
	ccd 0	ccd 1	ccd 2	ccd 3	ccd 6
grade 0 events	2802	3507	2977	5133	2809
	3%	4%	3%	5%	3%
grade 1 events	34	45	36	163	25
	0%	0%	0%	0%	0%
grade 2 events	1863	1881	1910	2039	1700
	2%	2%	2%	2%	2%
grade 3 events	957	1016	901	1023	914
	1%	1%	1%	1%	1%
grade 4 events	793	1001	930	1011	913
	1%	1%	1%	1%	1%
grade 5 events	2523	2803	2410	3086	2969
	3%	3%	2%	3%	3%
grade 6 events	1476	1785	1477	1646	1657
	1%	2%	1%	1%	2%
grade 7 events	65025	64981	77105	75000	69769
	86%	84%	87%	84%	86%

2.2 Compared Parameters

Parameter	Planned	Actual	Parameter	Planned	Actual
Instrument	ACIS	ACIS	Obspar format version number	7	7
Detector	ACIS-01236	ACIS-01236	Obspar file type	PREDICTED	ACTUAL
Grating	NONE	NONE	Obspar update status	NONE	UPDATED
Data mode	VFAINT	VFAINT	Number of optional ACIS chips dropped	0	0
Observation mode	POINTING	POINTING	On-chip summing requested	N	N
[deg] Pointing RA	11.835248	11.86048579292799	Subarray requested	NONE	NONE
[deg] Pointing Dec	-8.176316	-8.187651024271858	Alternating exposures requested	N	N
[deg] Pointing Roll	305.274855	305.4871249815103	[s] Primary exposure time	0.000000	3.1
[mm] SIM focus pos	-0.782348	-0.7809083437167272			
[mm] SIM defocus	0	0.001439871863259334			
[mm] SIM translation stage pos	-227.742463	-227.734108438797			
[mm] SIM translation stage offset	-5.85	-5.858344564132665			
[s] Observation start time (MET)	123441768.184000	123440487.38755			
Observation start date	2001-11-29T17:21:44	2001-11-29T17:01:27			
[s] Observation end time (MET)	123455768.184000	123456414.35069			
Observation end date	2001-11-29T21:15:04	2001-11-29T21:26:54			
Read mode	TIMED	TIMED			

2.3 Aspect



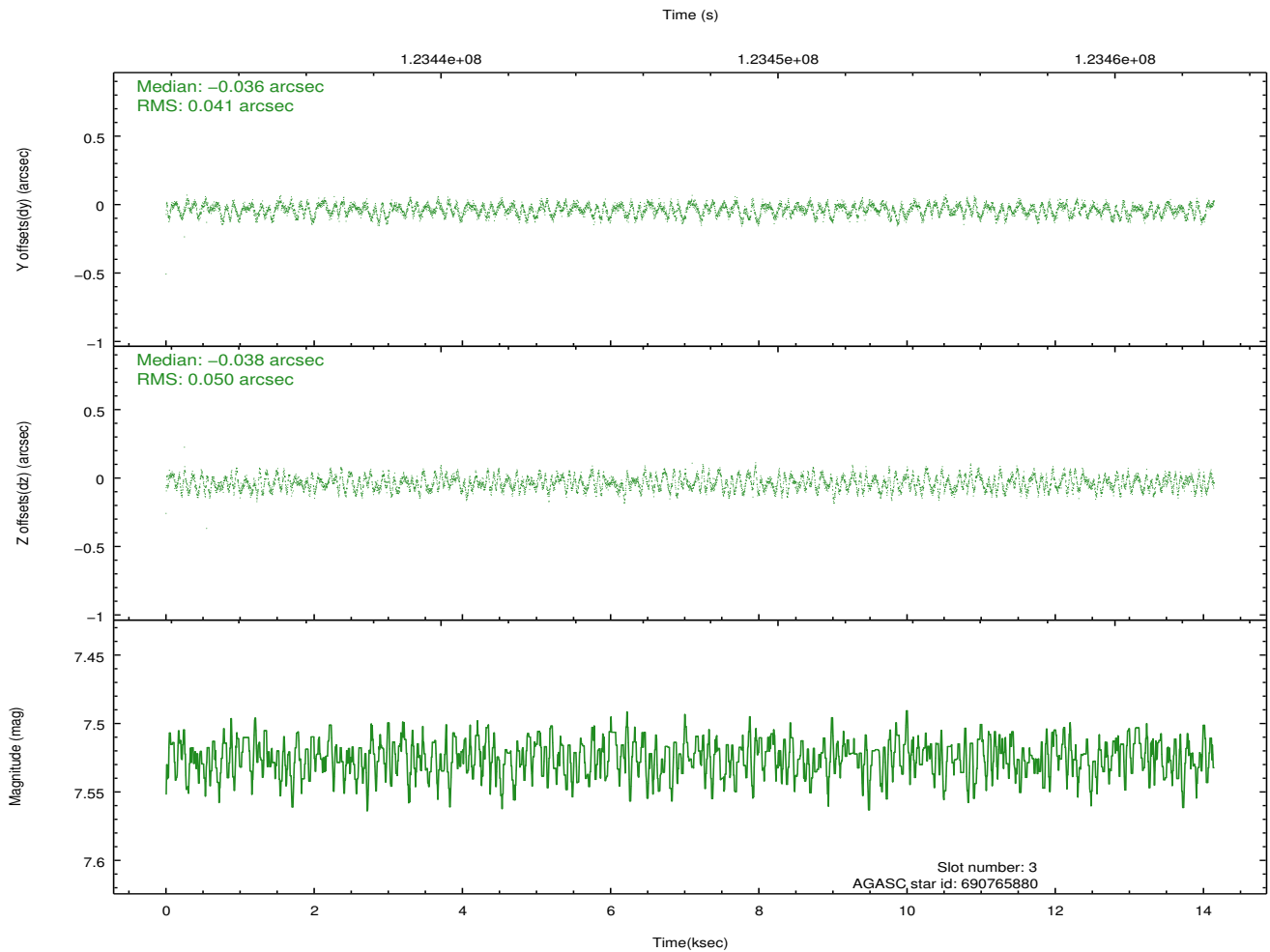
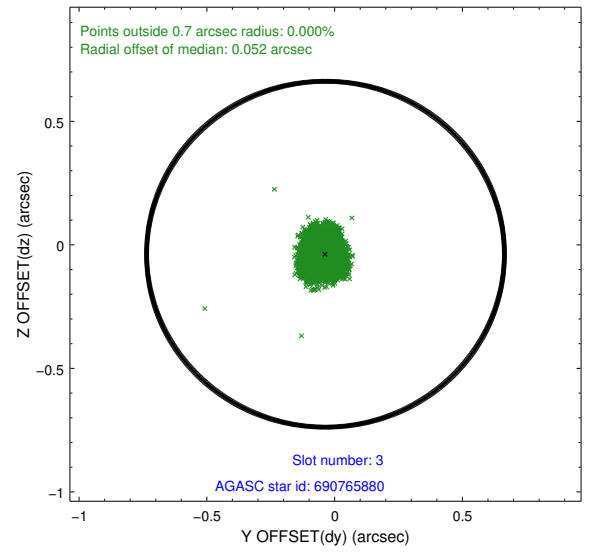
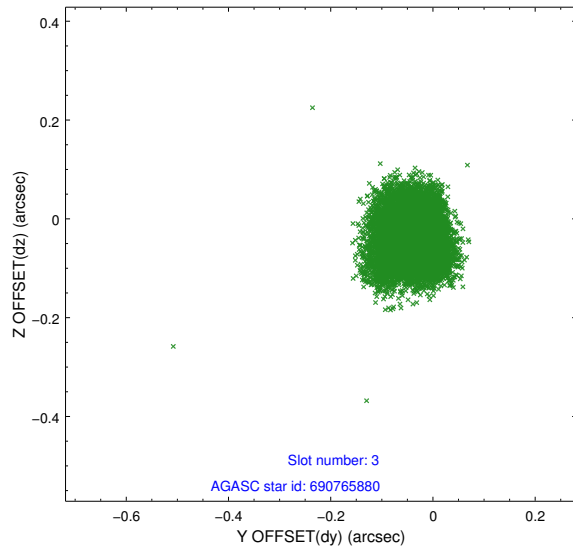


Slot Statistics

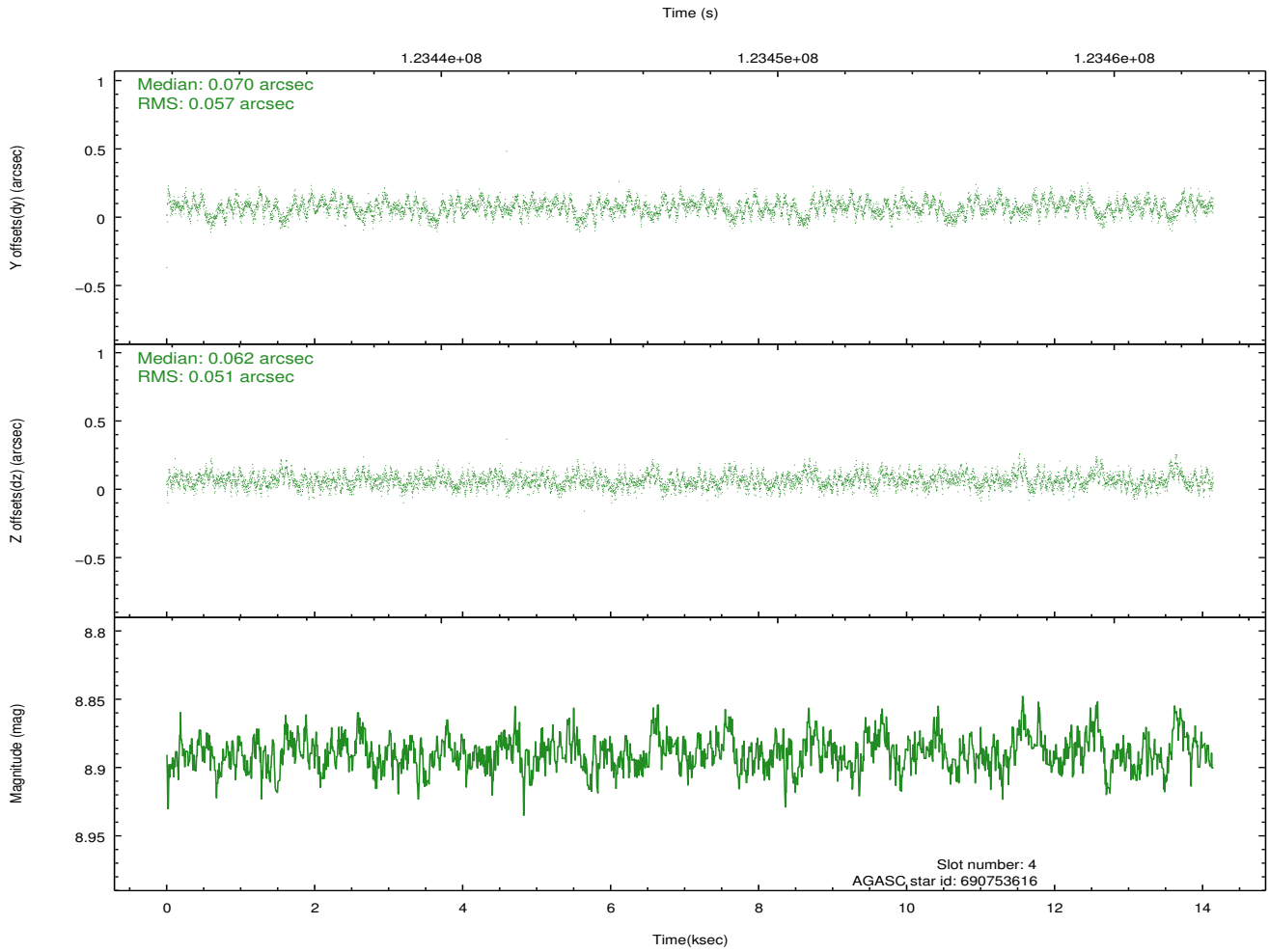
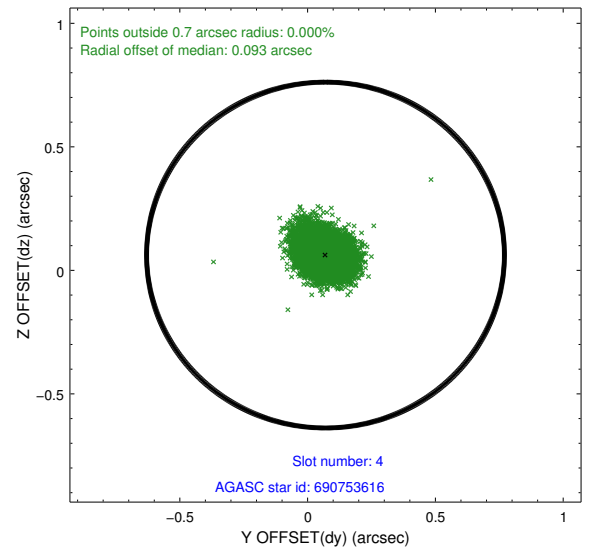
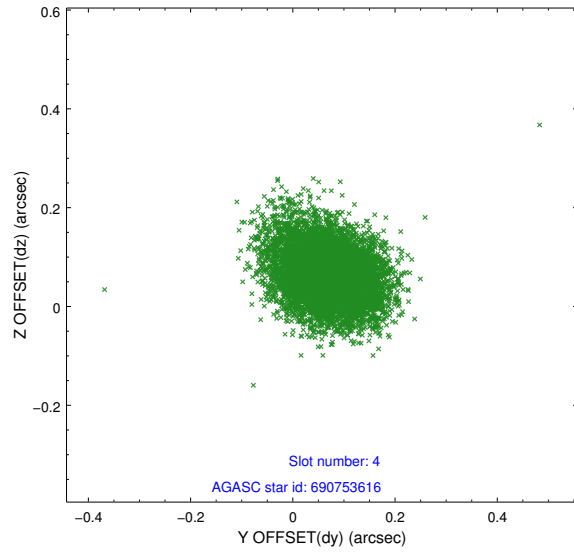
slot	status	id	mag	n_pts	med_dy	med_dz	dr1	dr2	ra	dec	mean_y	mean_z
0	FID	ACIS-I-1	7.25	3450	0.062	-0.005	0.009	0.014	0.000000	0.000000	936.98	-950.29
1	FID	ACIS-I-5	7.23	3450	-0.118	0.097	0.009	0.016	0.000000	0.000000	-1811.08	947.16
2	FID	ACIS-I-6	7.25	3450	-0.034	-0.022	0.008	0.013	0.000000	0.000000	402.13	1591.87
3	GUIDE	690765880	7.52	6899	-0.036	-0.038	0.070	0.106	12.435007	-7.849306	274.49	2424.55
4	GUIDE	690753616	8.89	6898	0.070	0.062	0.081	0.131	12.495554	-8.099390	1133.87	2080.13
5	GUIDE	690767472	8.54	6894	0.067	0.058	0.052	0.084	11.865479	-8.417728	771.50	-414.08
6	GUIDE	690768160	8.94	6895	-0.000	-0.039	0.079	0.127	11.554498	-8.331592	-121.12	-1140.14
7	GUIDE	690622720	8.98	6892	-0.095	-0.043	0.074	0.122	11.303284	-8.162801	-1133.88	-1521.22

2.4 Star Slots

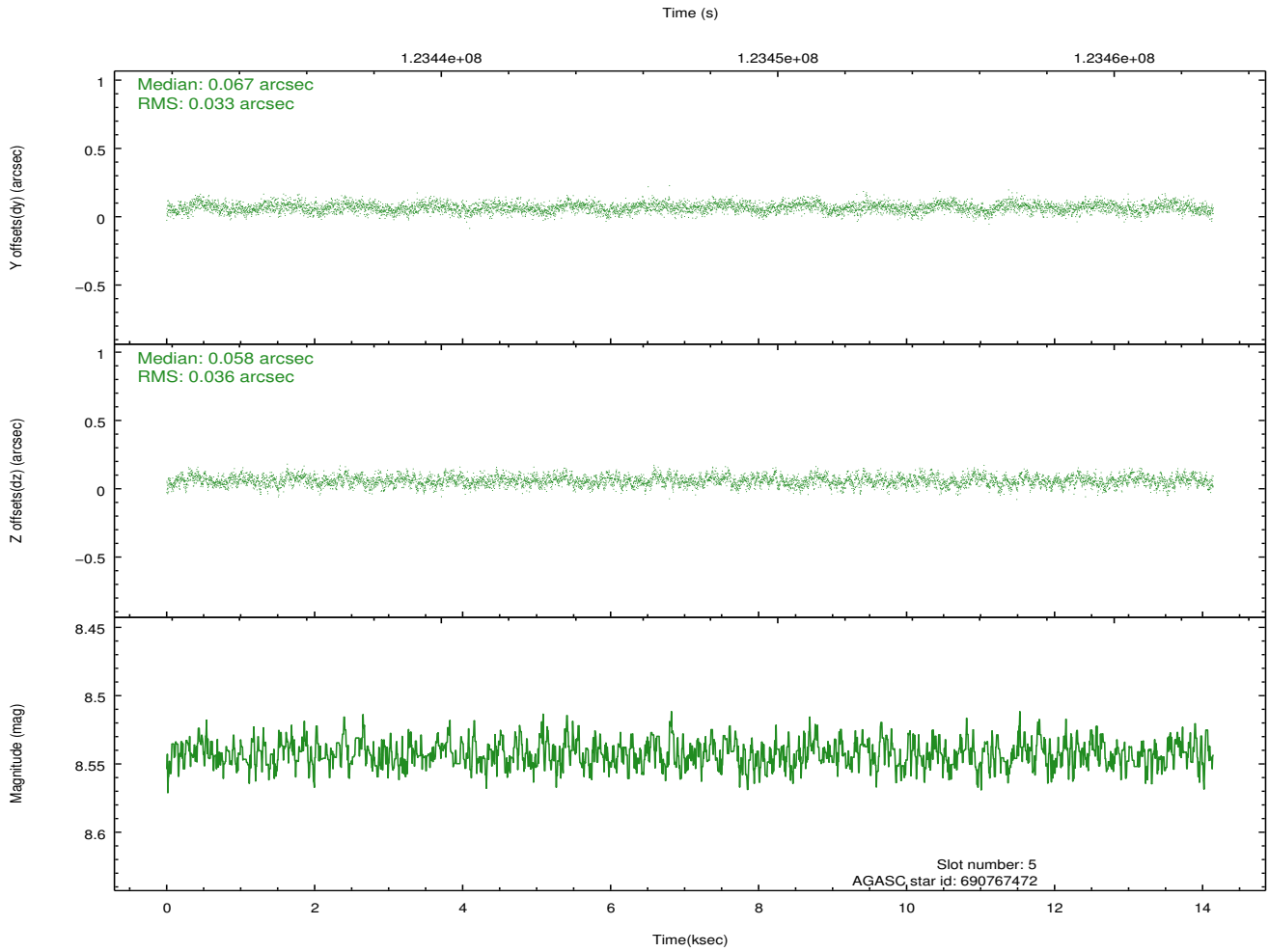
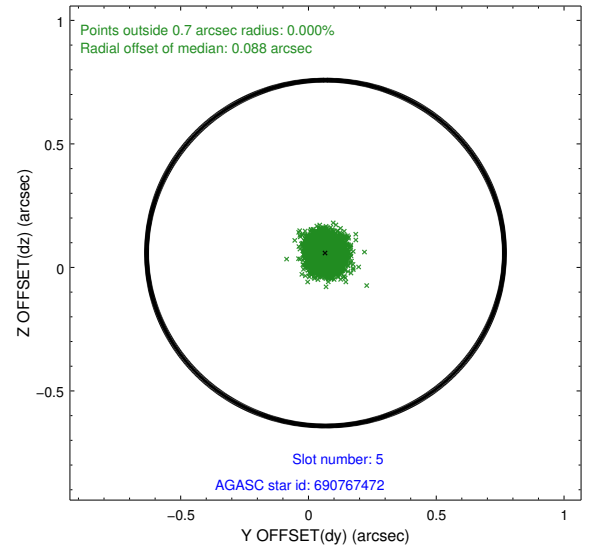
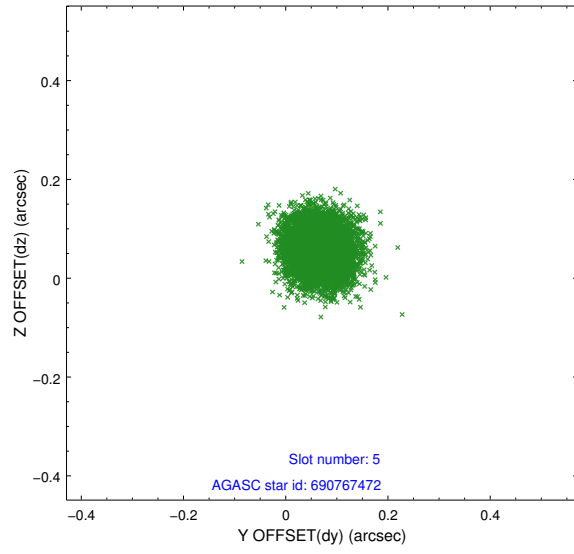
2.4.1 Slot 3



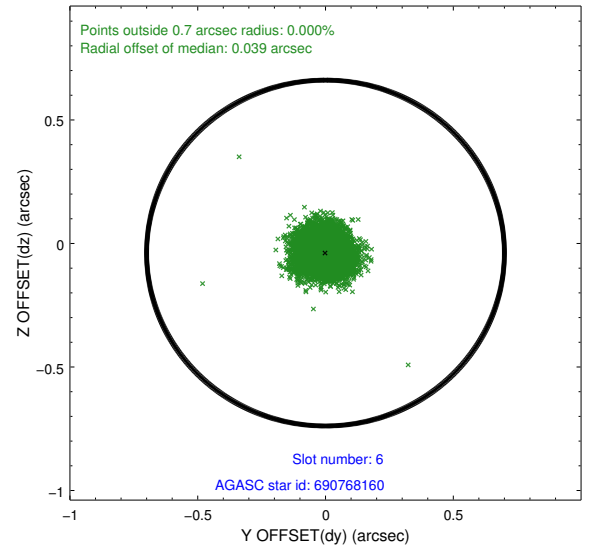
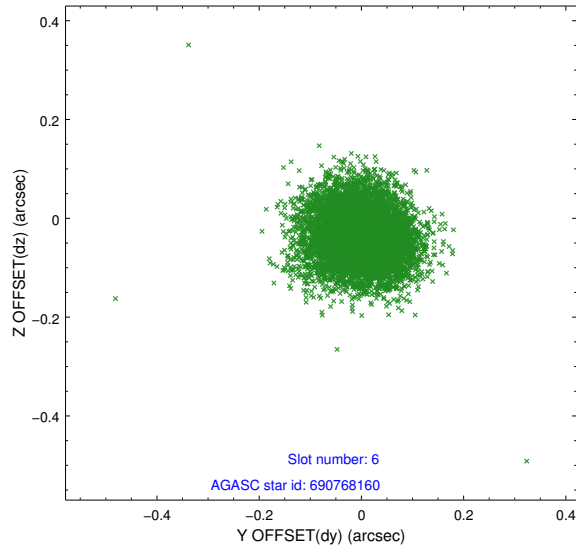
2.4.2 Slot 4



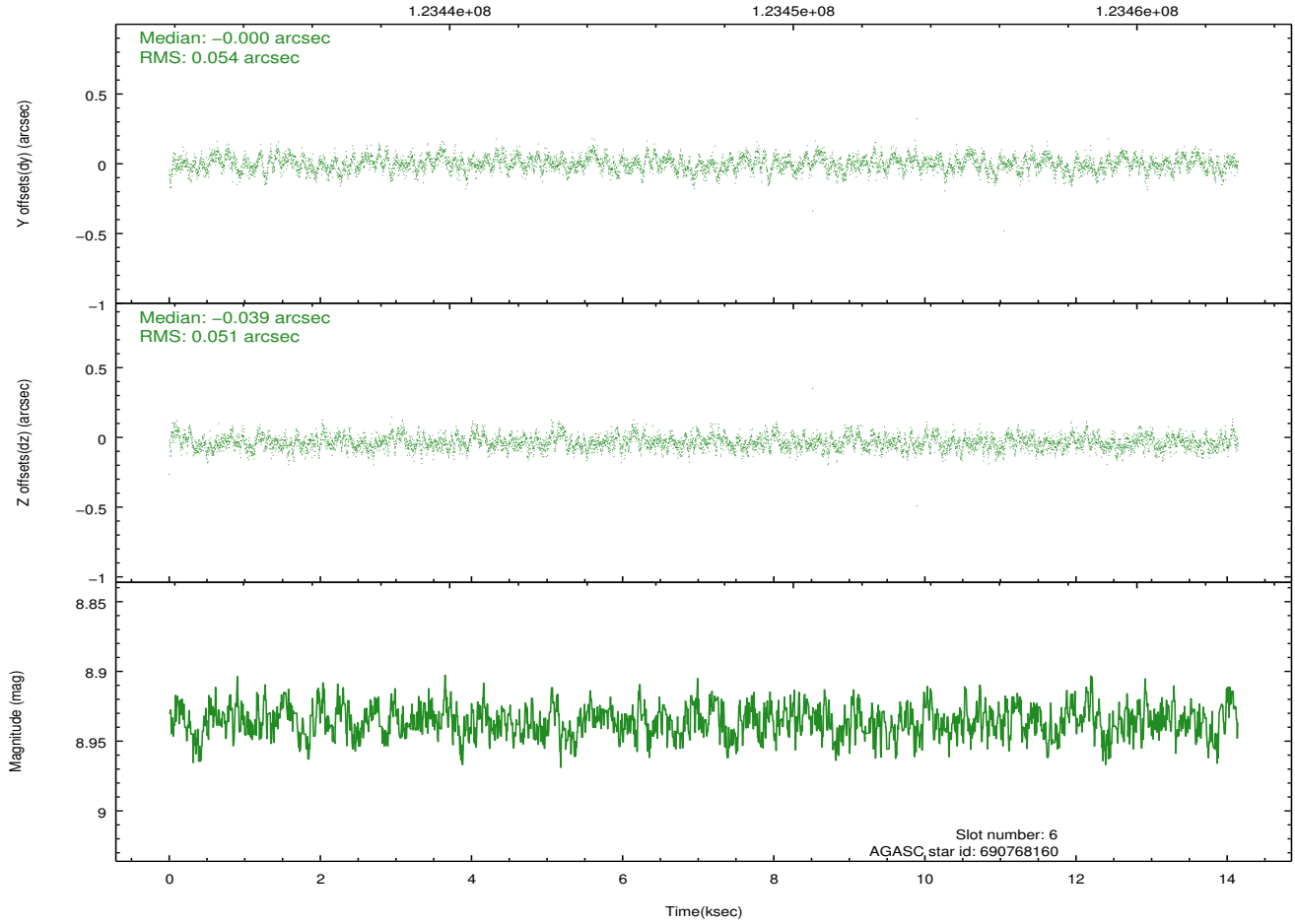
2.4.3 Slot 5



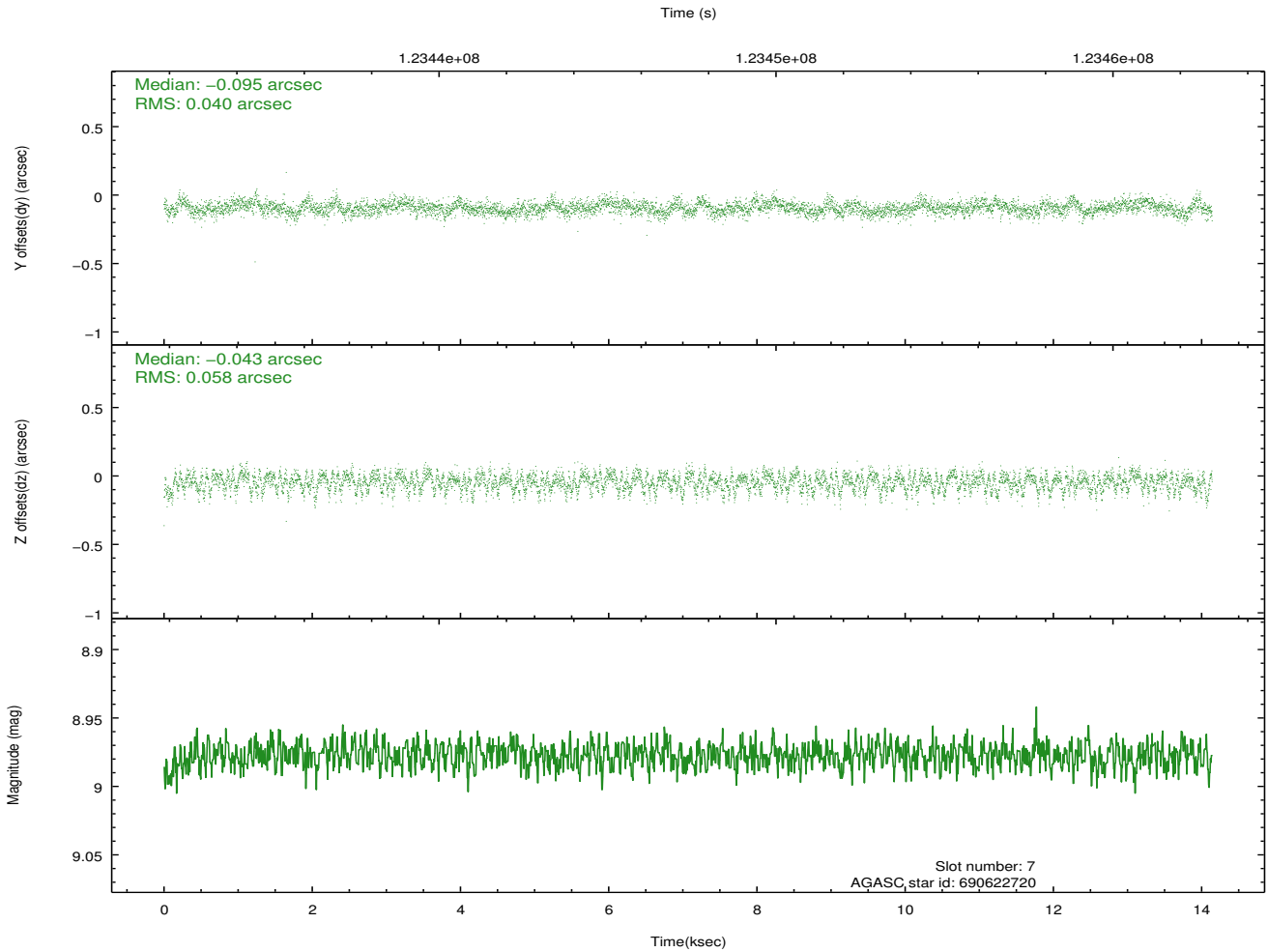
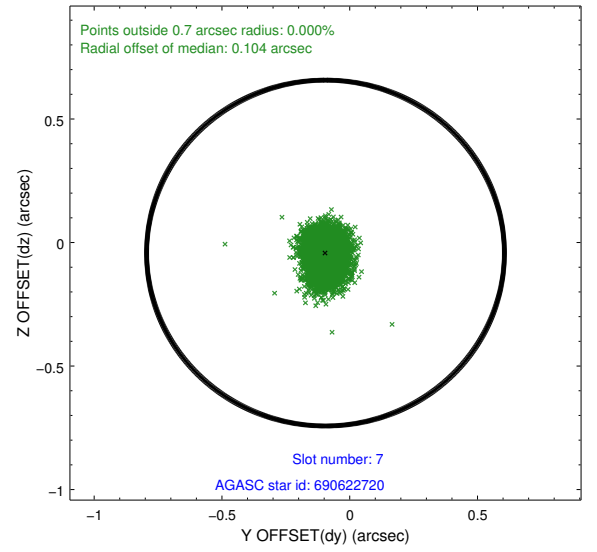
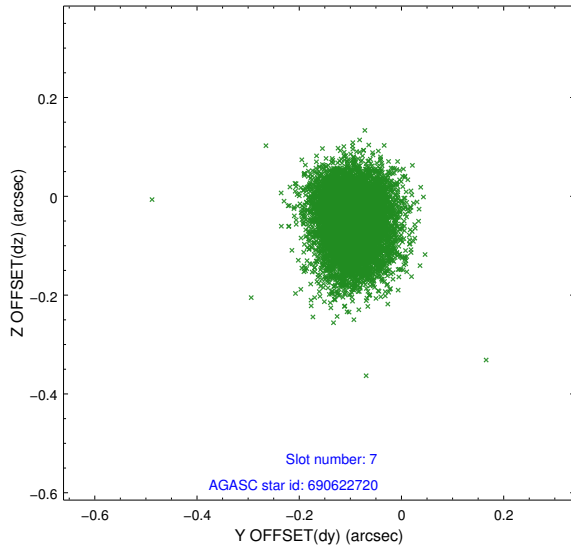
2.4.4 Slot 6



Time (s)

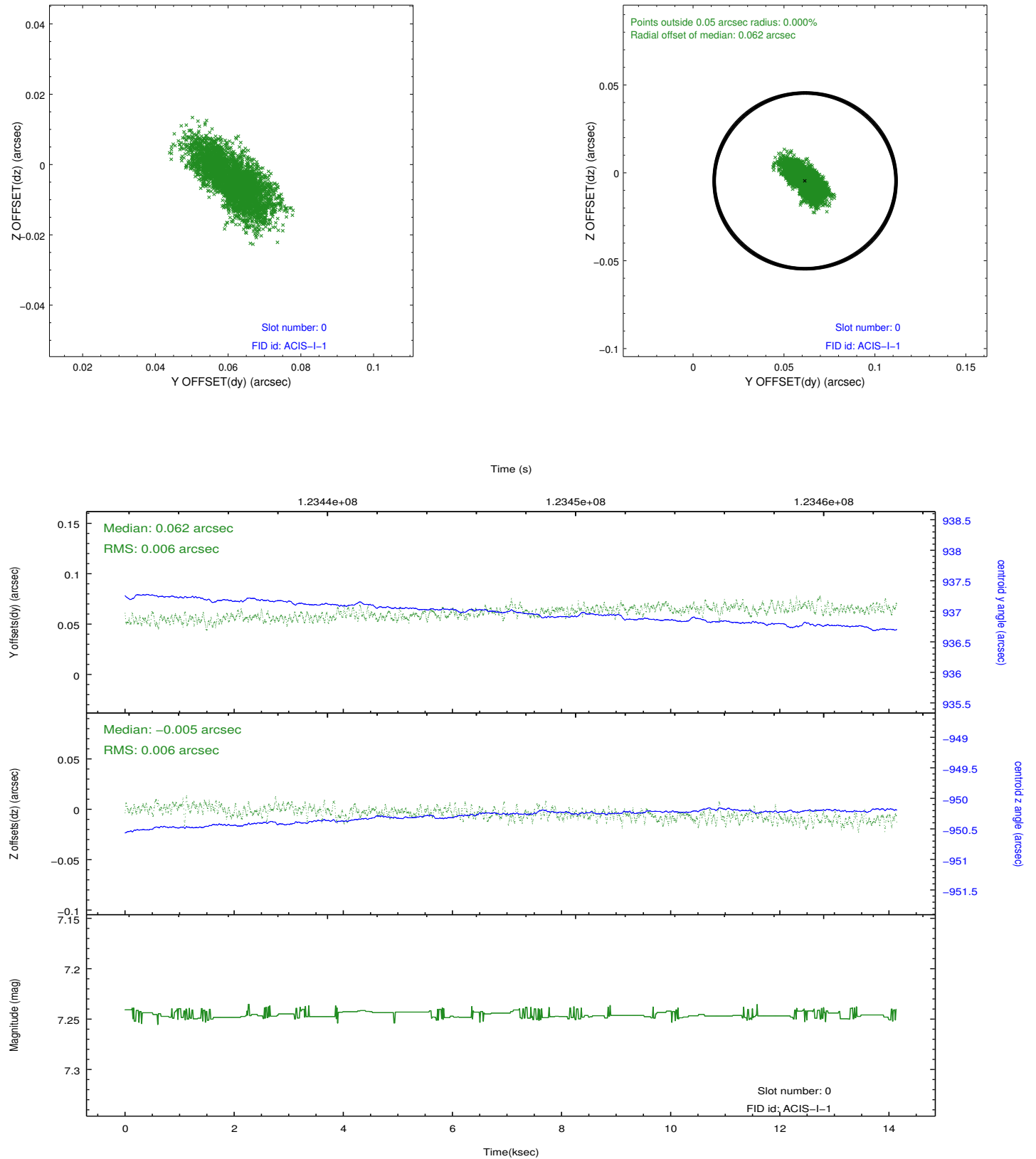


2.4.5 Slot 7

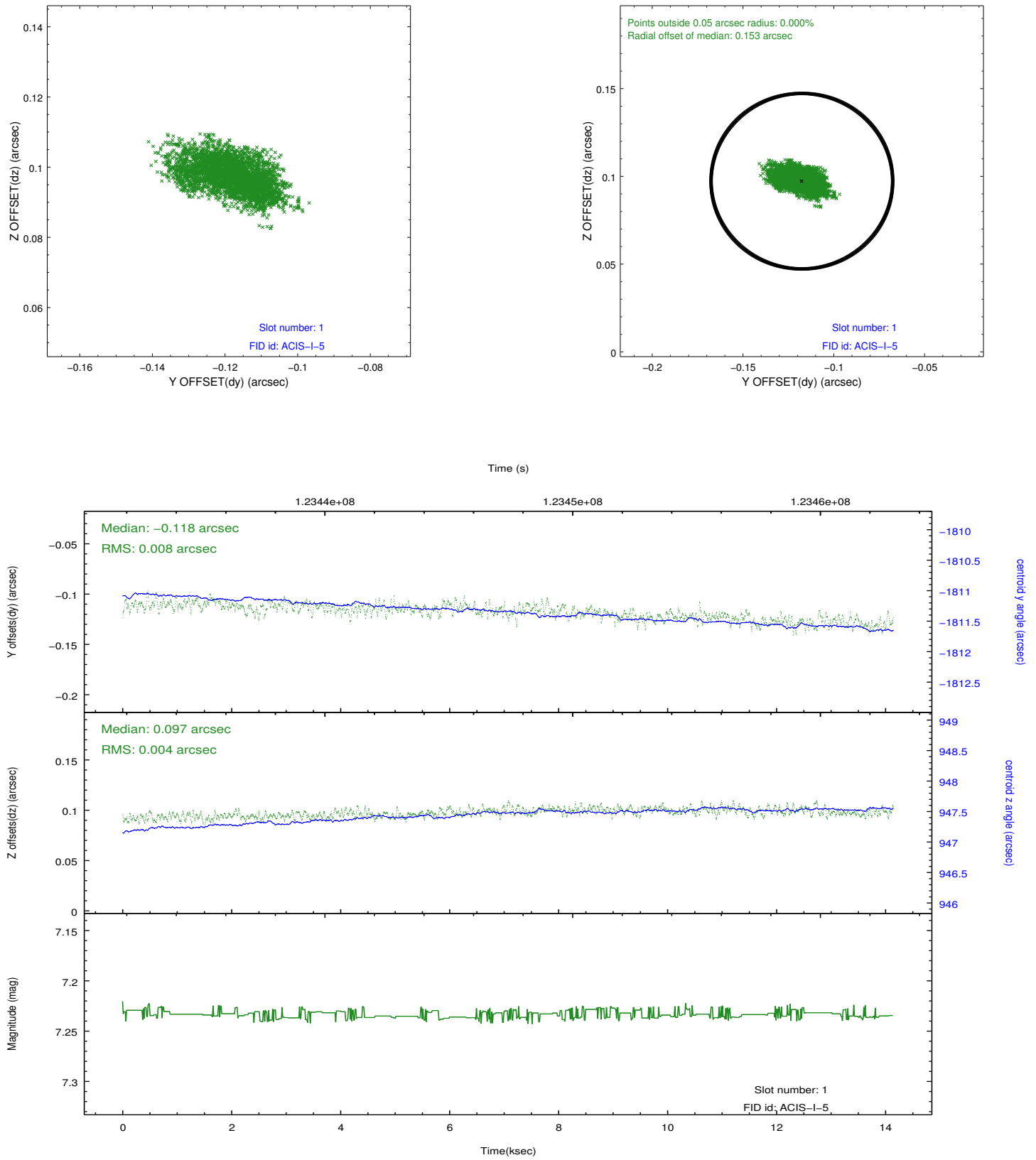


2.5 FID Slots

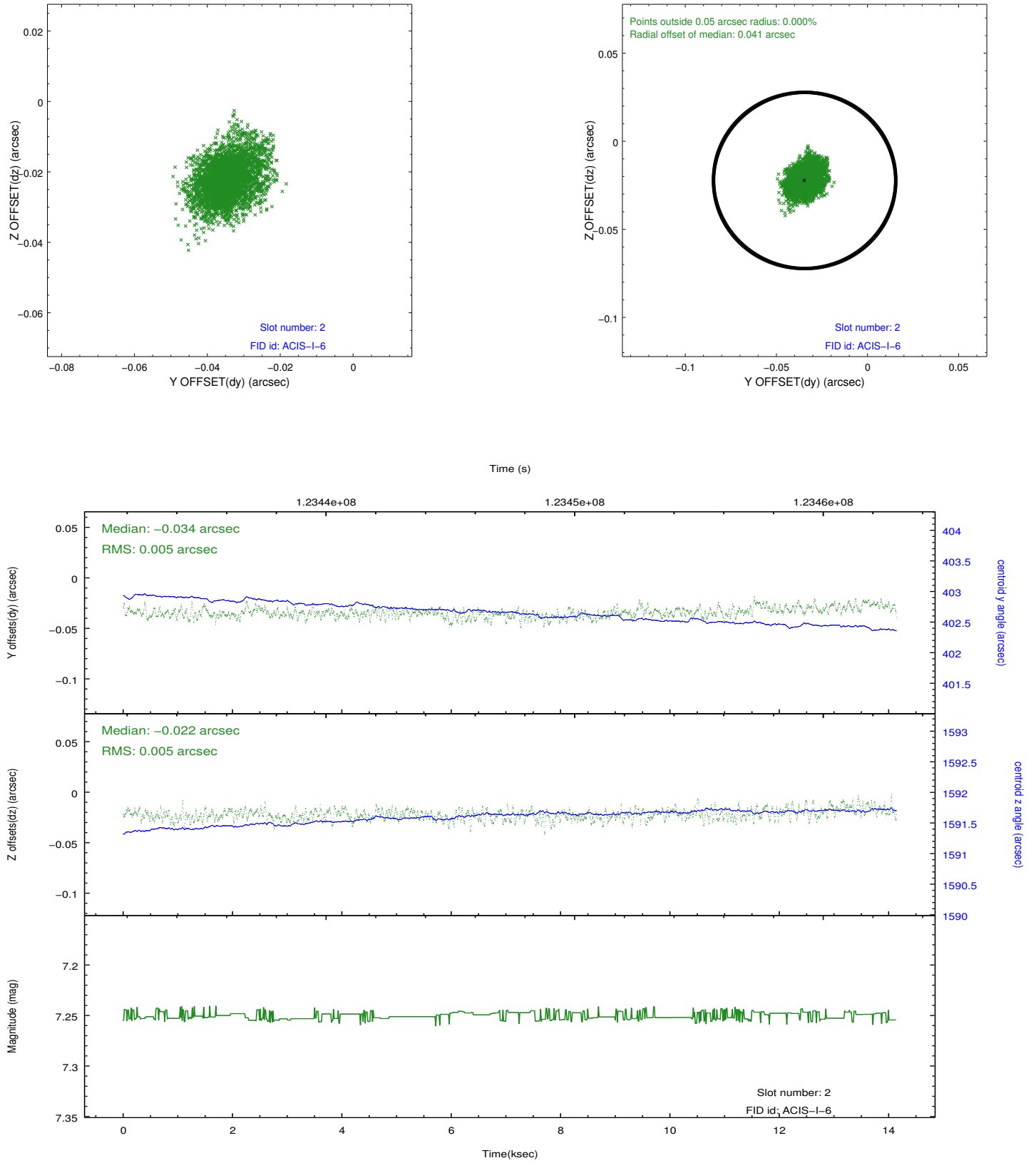
2.5.1 Slot 0



2.5.2 Slot 1



2.5.3 Slot 2



A Summary

A.1 Status

V&V Scientist	Jen Lauer
V&V Date (YYYY-MM-DD)	2012.09.28
V&V Edition	1
V&V Disposition and Status	OK
V&V Charge Time	14.135

A.2 Comments