

# V&V Reference Report

## L2 ASCDS Version : 7.6.9

Observation 3249 - L2 Version 001  
Chandra X-Ray Center

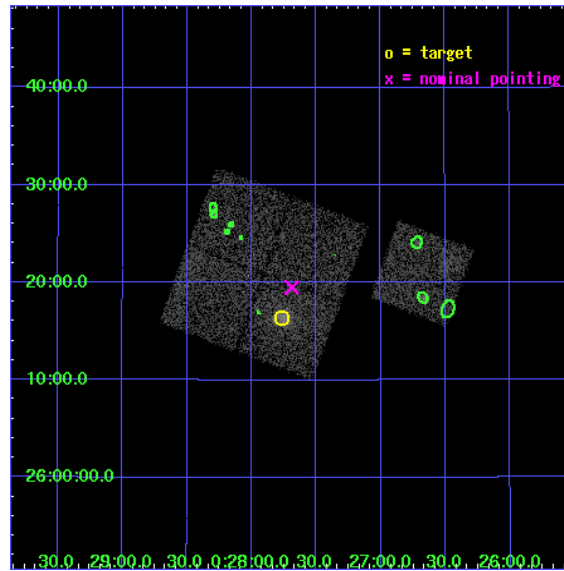
L2 Processing Date : Sep 21 2006

## Contents

<b>1</b>	<b>Front</b>	<b>2</b>
<b>2</b>	<b>OBI</b>	<b>3</b>
2.1	OBI . . . . .	3
2.1.1	Images . . . . .	3
2.1.2	Bias . . . . .	3
2.1.3	Parameters . . . . .	4
2.1.4	Events . . . . .	4
2.2	Compared Parameters . . . . .	5
2.3	Aspect . . . . .	6
2.4	Star Slots . . . . .	9
2.4.1	Slot 3 . . . . .	9
2.4.2	Slot 4 . . . . .	10
2.4.3	Slot 5 . . . . .	11
2.4.4	Slot 6 . . . . .	12
2.4.5	Slot 7 . . . . .	13
2.5	FID Slots . . . . .	14
2.5.1	Slot 0 . . . . .	14
2.5.2	Slot 1 . . . . .	15
2.5.3	Slot 2 . . . . .	16
<b>3</b>	<b>Point Sources</b>	<b>17</b>
<b>A</b>	<b>Summary</b>	<b>18</b>
A.1	Status . . . . .	18
A.2	Comments . . . . .	18

# 1 Front

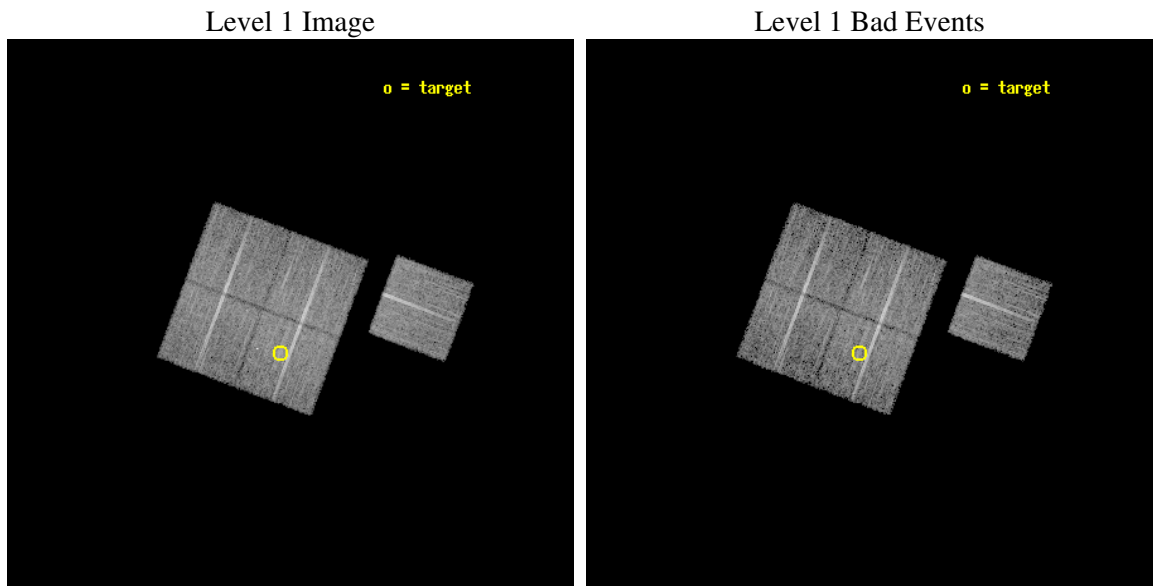
seq_num	800249
obs_id	3249
title	OBSERVATION OF BCS CLUSTERS, FIRST SET
observer	DR. LEON VANSPEYBROECK
object	RXJ0027.6+2616
dtcycle	0
cycle	P
ra_targ	6.94125
dec_targ	26.273611
ra_nom	6.9220721200308
dec_nom	26.325187719916
roll_nom	110.599132294
revision	2
ontime	10109.099980563
livetime	9977.0171471057
ontime0	10109.099980563
ontime1	10109.099980563
ontime2	10109.099980563
ontime3	10109.099980563
ontime6	10109.099980563
l2events	24994



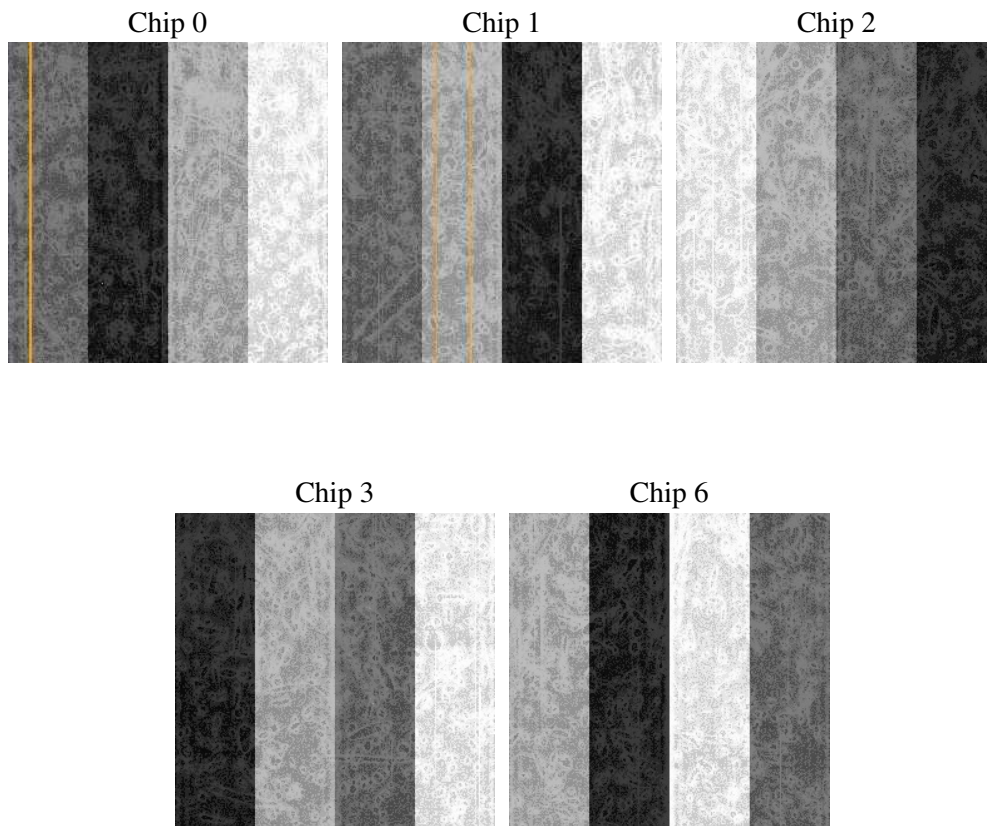
## 2 OBI

### 2.1 OBI

#### 2.1.1 Images



#### 2.1.2 Bias



### 2.1.3 Parameters

obi_num	0
ascdsver	7.6.9
caldsver	3.2.3
date	2006-09-21T03:34:55
revision	2

sched_exp_time	10000.000000
ontime	11992.343191504
ontime0	11992.343191504
ontime1	11992.343191504
ontime2	11992.343191504
ontime3	11992.343191504
ontime6	11992.343191504
l1events	332312

### 2.1.4 Events

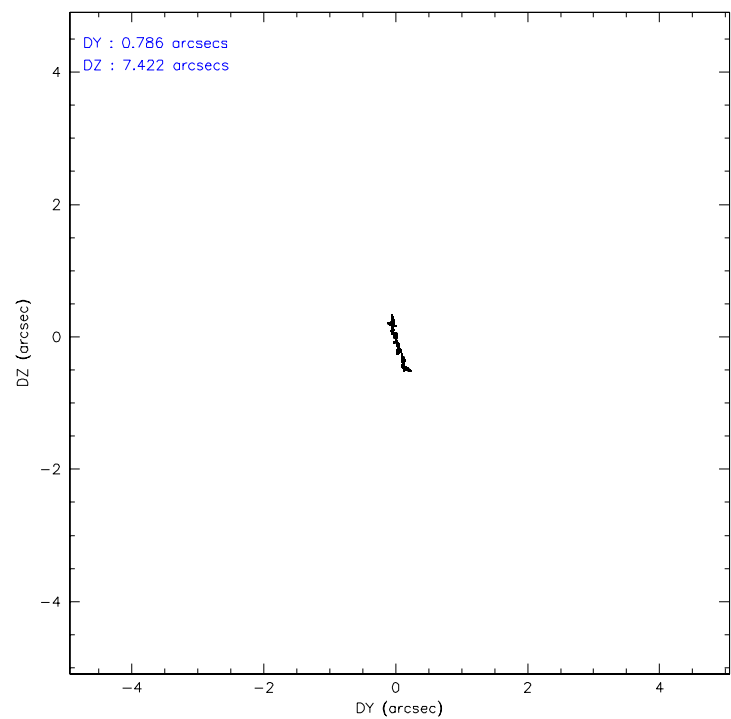
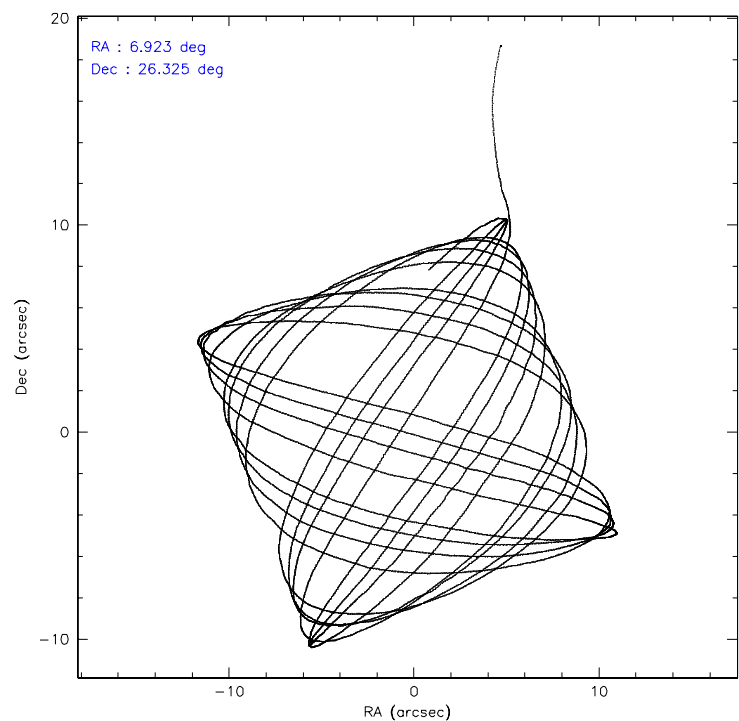
	ccd 0	ccd 1	ccd 2	ccd 3	ccd 6
level 1 events	61506	62789	70645	69769	67603
rejected events	55804	56639	65314	62964	61636
rejected %	90%	90%	92%	90%	91%

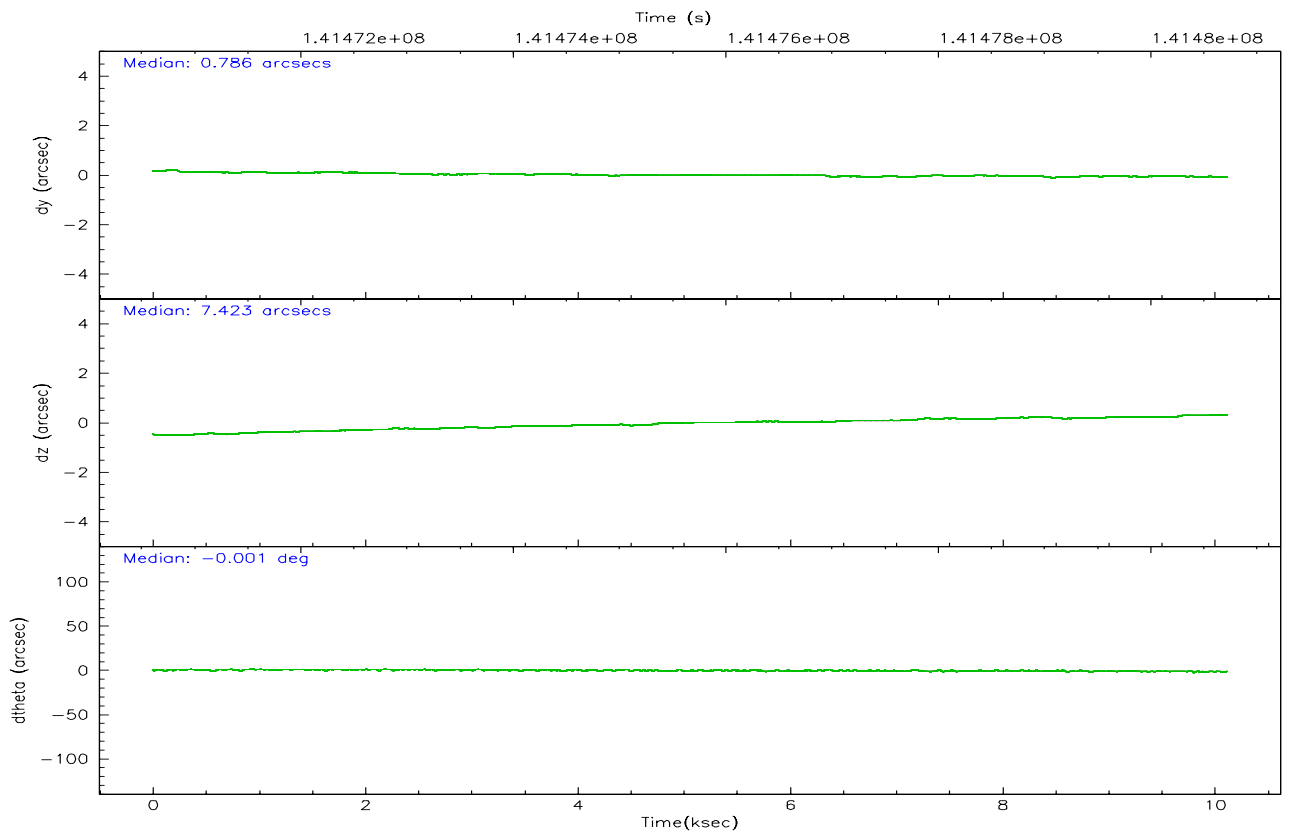
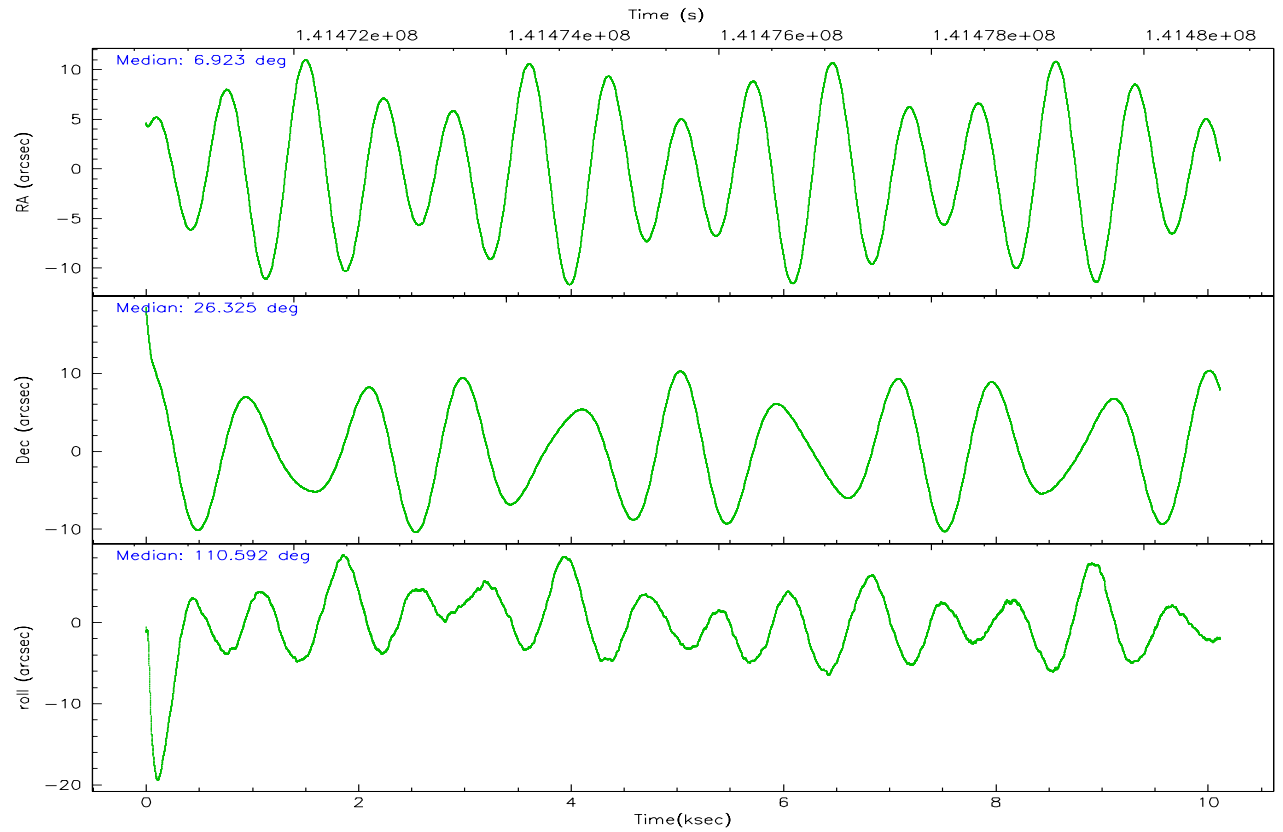
	ccd 0	ccd 1	ccd 2	ccd 3	ccd 6
grade 0 events	2459	2650	2290	3582	2583
	3%	4%	3%	5%	3%
grade 1 events	18	31	25	44	31
	0%	0%	0%	0%	0%
grade 2 events	1523	1496	1423	1421	1474
	2%	2%	2%	2%	2%
grade 3 events	751	795	656	773	753
	1%	1%	0%	1%	1%
grade 4 events	744	841	737	752	749
	1%	1%	1%	1%	1%
grade 5 events	2138	2539	2128	2500	2501
	3%	4%	3%	3%	3%
grade 6 events	1227	1450	1240	1309	1457
	1%	2%	1%	1%	2%
grade 7 events	52646	52987	62146	59388	58055
	85%	84%	87%	85%	85%

## 2.2 Compared Parameters

Parameter	Planned	Actual	Parameter	Planned	Actual
Instrument	ACIS	ACIS	Obspar format version number	6	6
Detector	ACIS-01236	ACIS-01236	Obspar file type	PREDICTED	ACTUAL
Grating	NONE	NONE	Obspar update status	NONE	UPDATED
Data mode	VFAINT	VFAINT	Number of optional ACIS chips dropped	0	0
Observation mode	POINTING	POINTING	On-chip summing requested	N	N
Pointing RA	6.945717	6.922072120030837	Subarray requested	NONE	NONE
Pointing Dec	26.307820	26.32518771991582	Alternating exposures requested	N	N
Pointing Roll	110.379936	110.5991322939993	Primary exposure time	0.000000	3.1
SIM focus pos (mm)	-0.782348	-0.7809083437167272			
SIM defocus (mm)	0	0.001439871863259334			
SIM translation stage pos (mm)	-225.840463	-225.8433433320239			
SIM translation stage offset (mm)	-7.752	-7.749109670905796			
Observation start time	141470720.184000	141468729.31757			
Observation start date	2002-06-26T09:24:16	2002-06-26T08:52:09			
Observation end time	141480720.184000	141481385.50559			
Observation end date	2002-06-26T12:10:56	2002-06-26T12:23:05			
Read mode	TIMED	TIMED			

### 2.3 Aspect





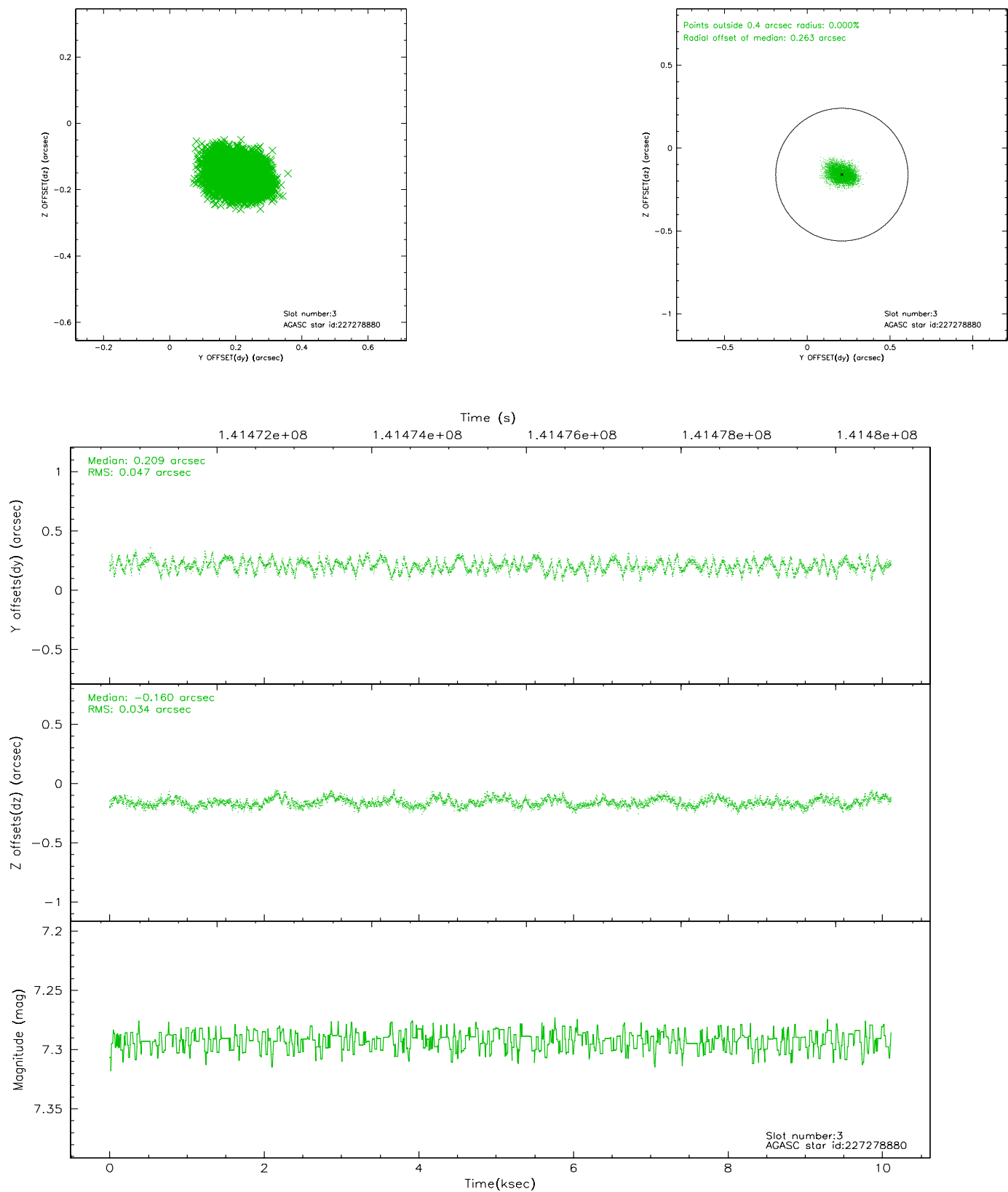
### Slot Statistics

slot	status	id	mag	n_pts	med_dy	med_dz	dr1	dr2	ra	dec	mean_y	mean_z
0	FID	ACIS-I-1	7.23	2468	0.074	-0.011	0.012	0.020	0.000000	0.000000	938.96	-989.89
1	FID	ACIS-I-5	7.22	2466	-0.170	0.096	0.008	0.013	0.000000	0.000000	-1809.06	907.44
2	FID	ACIS-I-6	7.26	2467	0.004	-0.014	0.008	0.013	0.000000	0.000000	403.92	1552.39
3	GUIDE	227278880	7.29	4935	0.209	-0.160	0.063	0.099	6.802316	25.578514	-2297.51	1351.76
4	GUIDE	227284168	8.51	4936	-0.223	0.231	0.066	0.108	7.338725	26.871683	1466.01	-1888.67
5	GUIDE	227286408	8.56	4934	-0.036	0.072	0.067	0.106	7.352499	26.495316	179.98	-1463.31
6	GUIDE	227288248	8.91	4934	-0.062	0.081	0.072	0.119	7.112560	26.515036	513.78	-762.49
7	GUIDE	227286224	9.60	4933	0.105	-0.227	0.112	0.182	6.556975	25.872372	-1027.95	1726.45

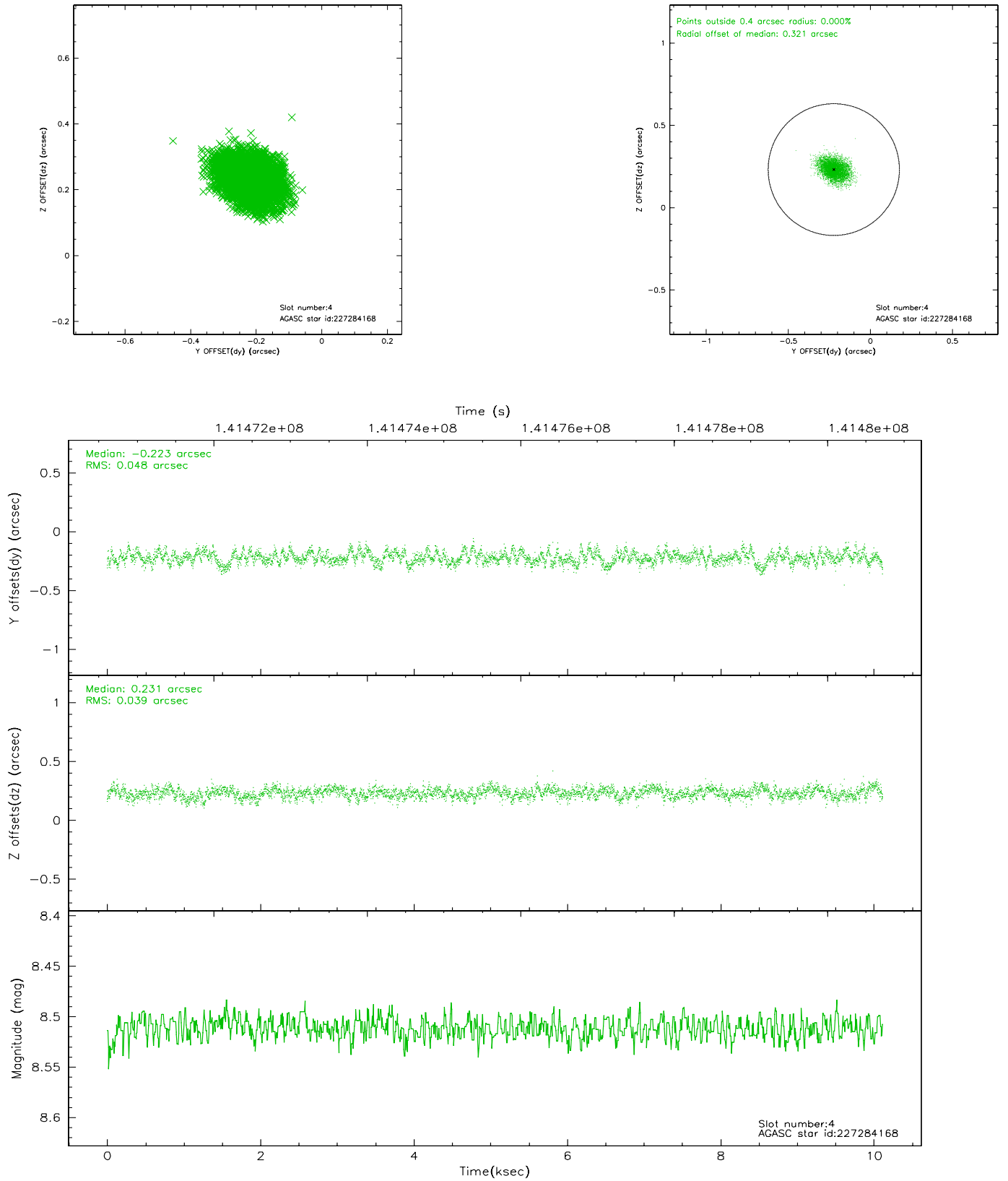


## 2.4 Star Slots

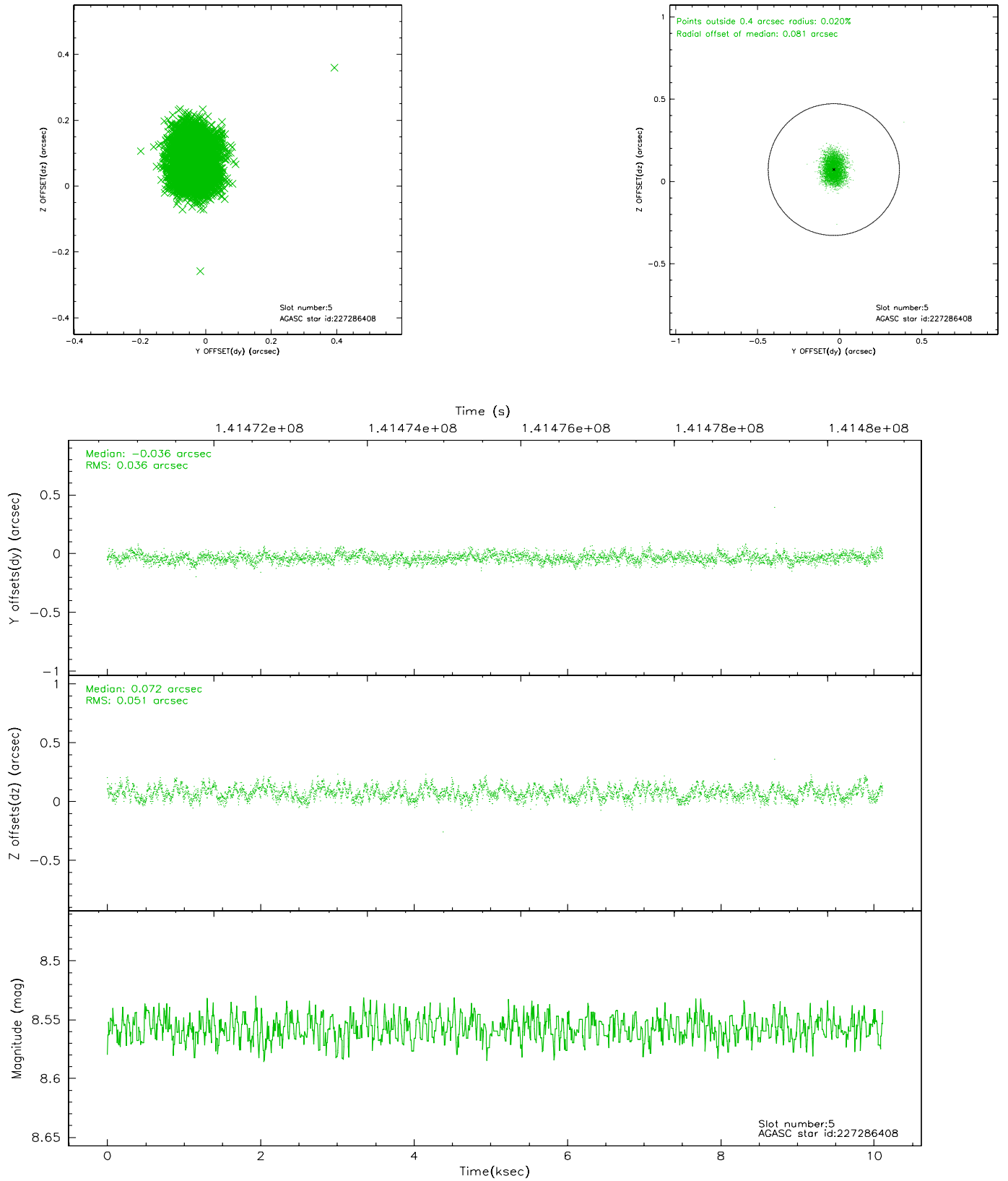
### 2.4.1 Slot 3



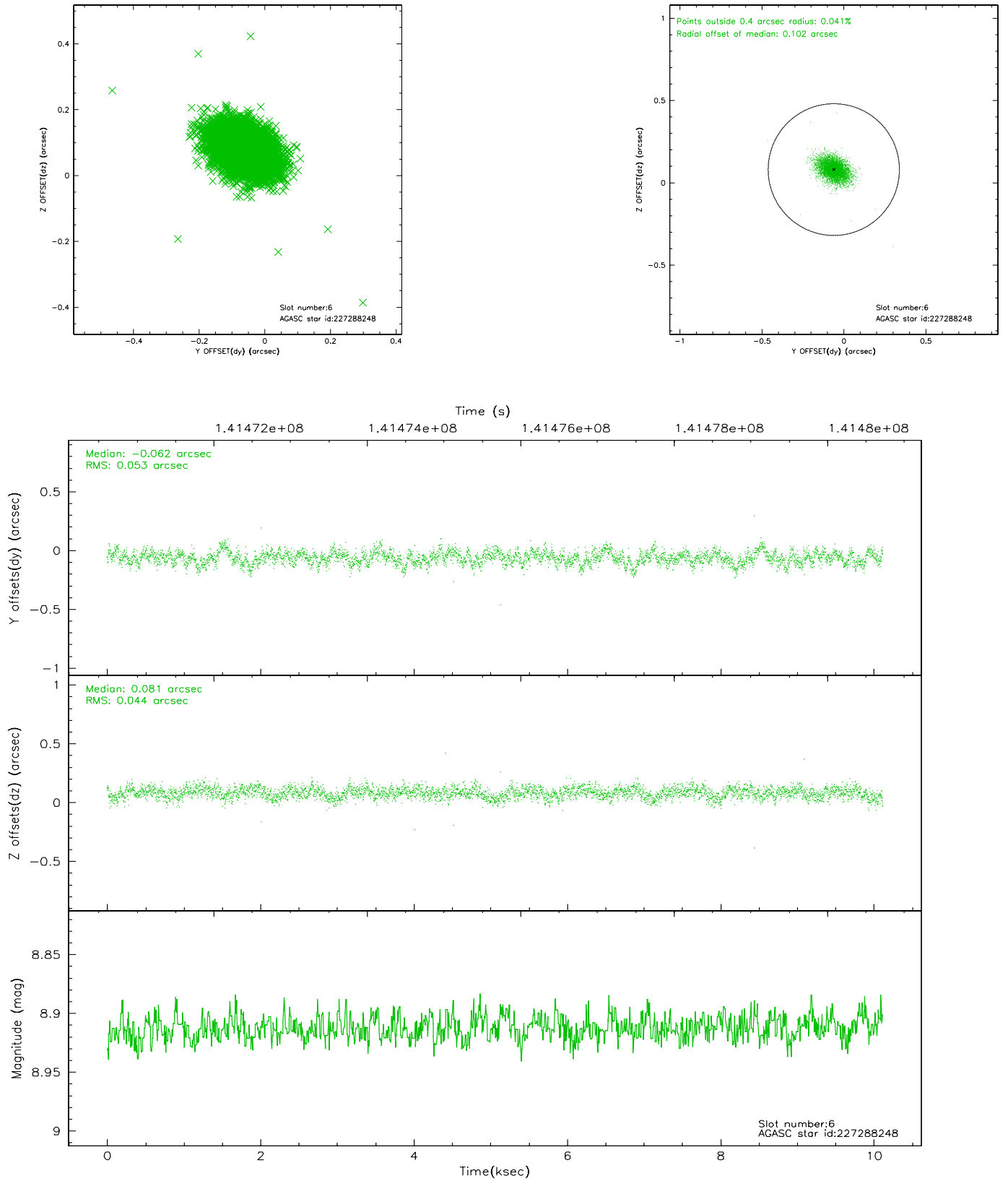
## 2.4.2 Slot 4



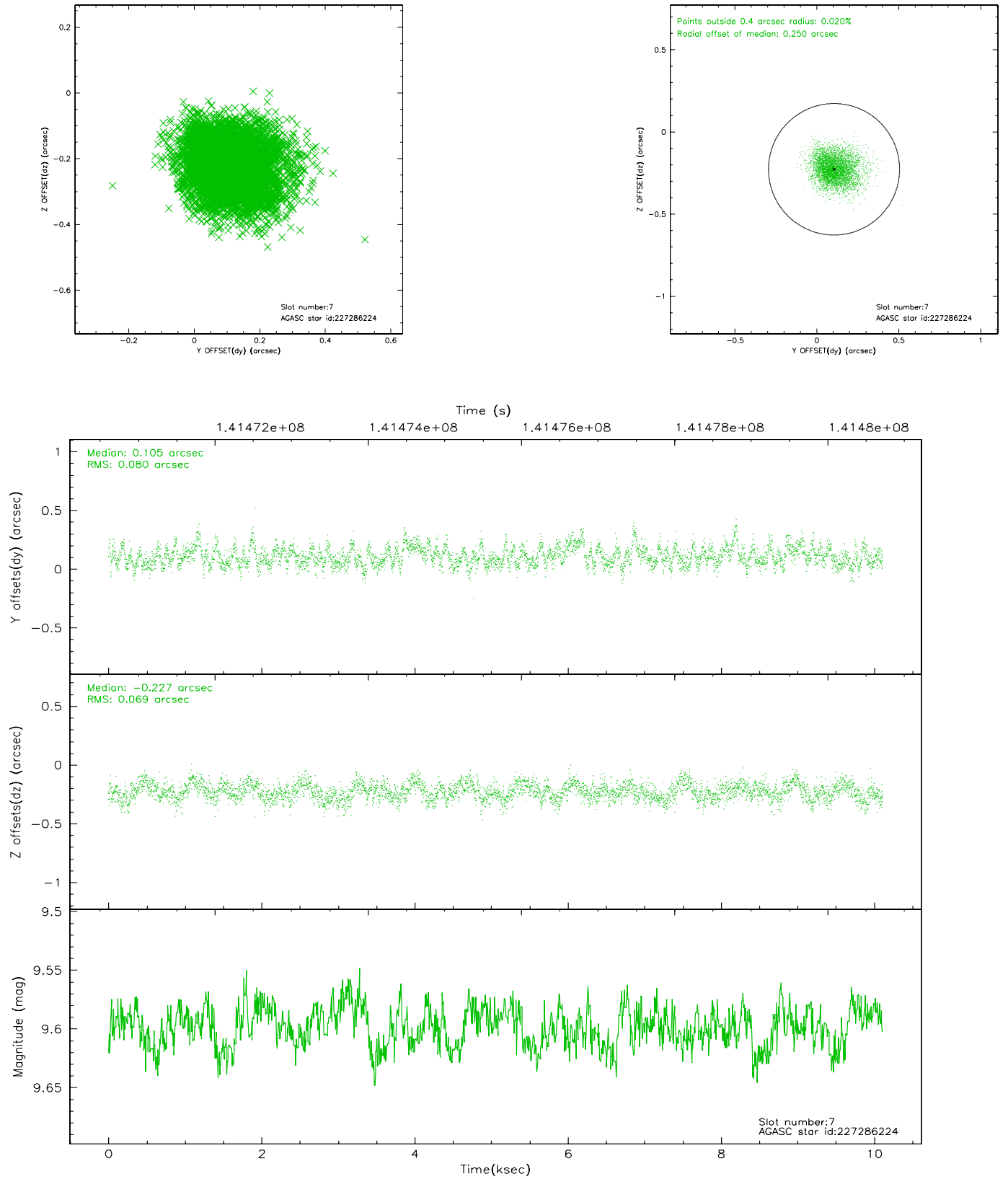
### 2.4.3 Slot 5



## 2.4.4 Slot 6

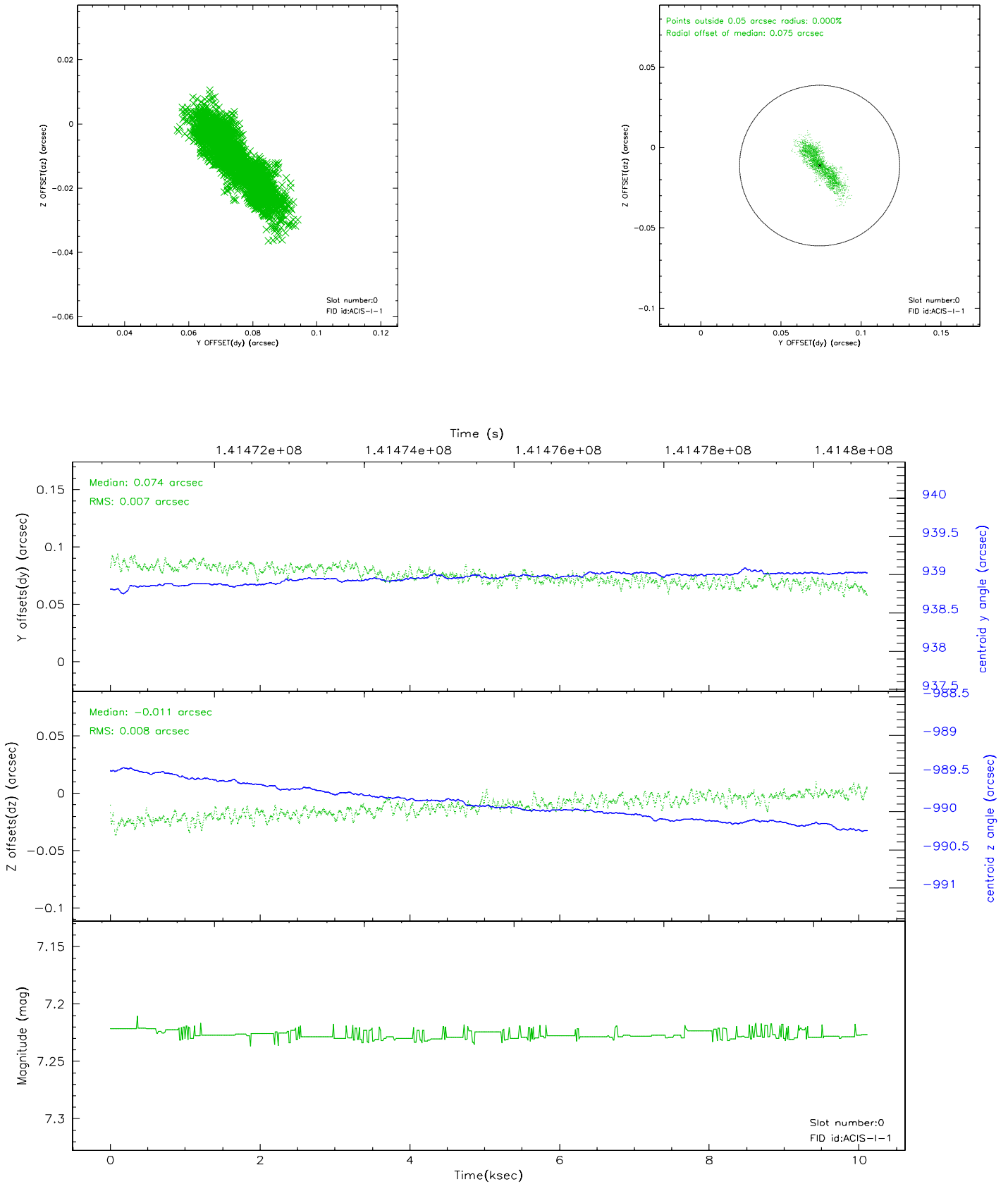


## 2.4.5 Slot 7

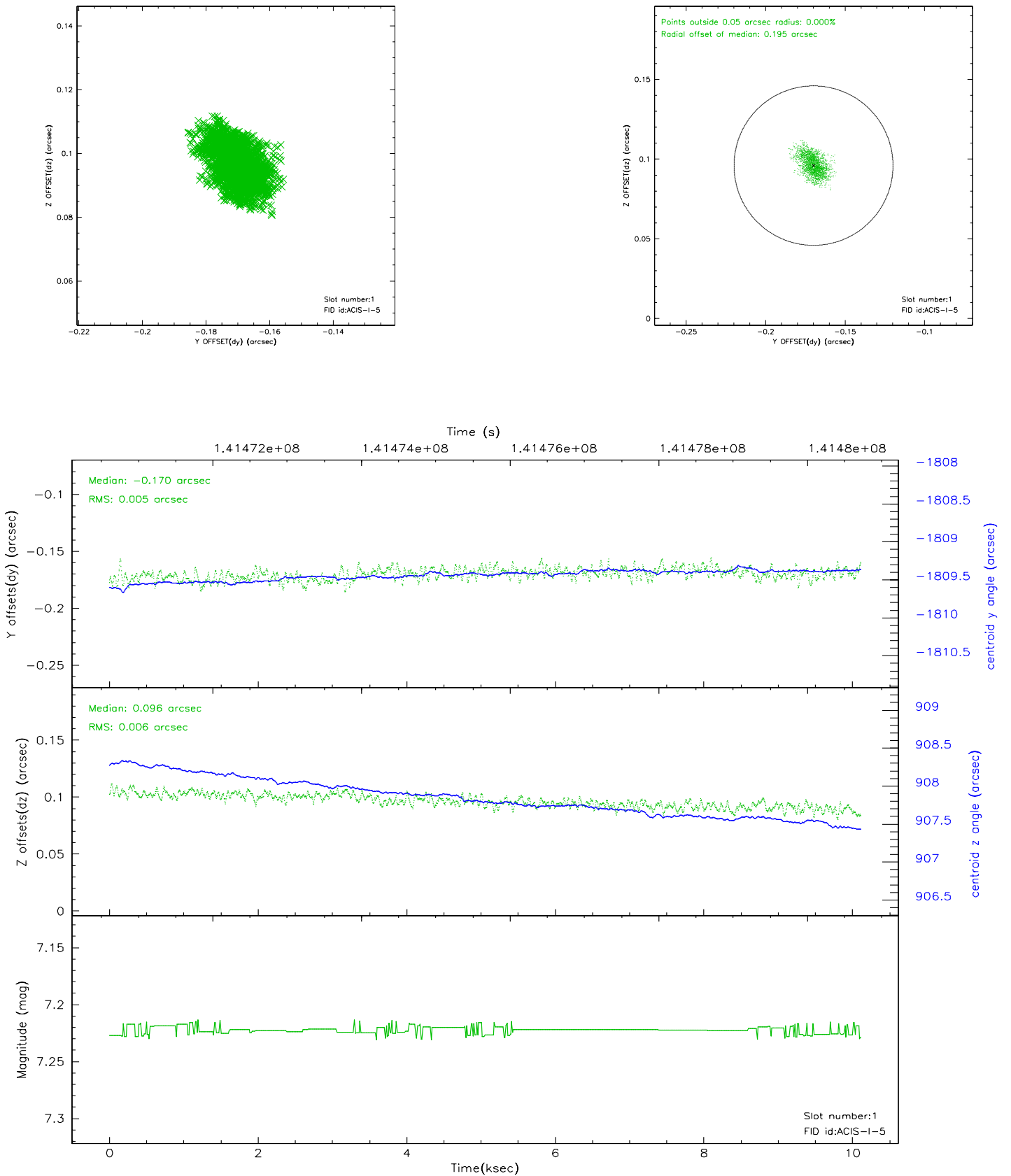


## 2.5 FID Slots

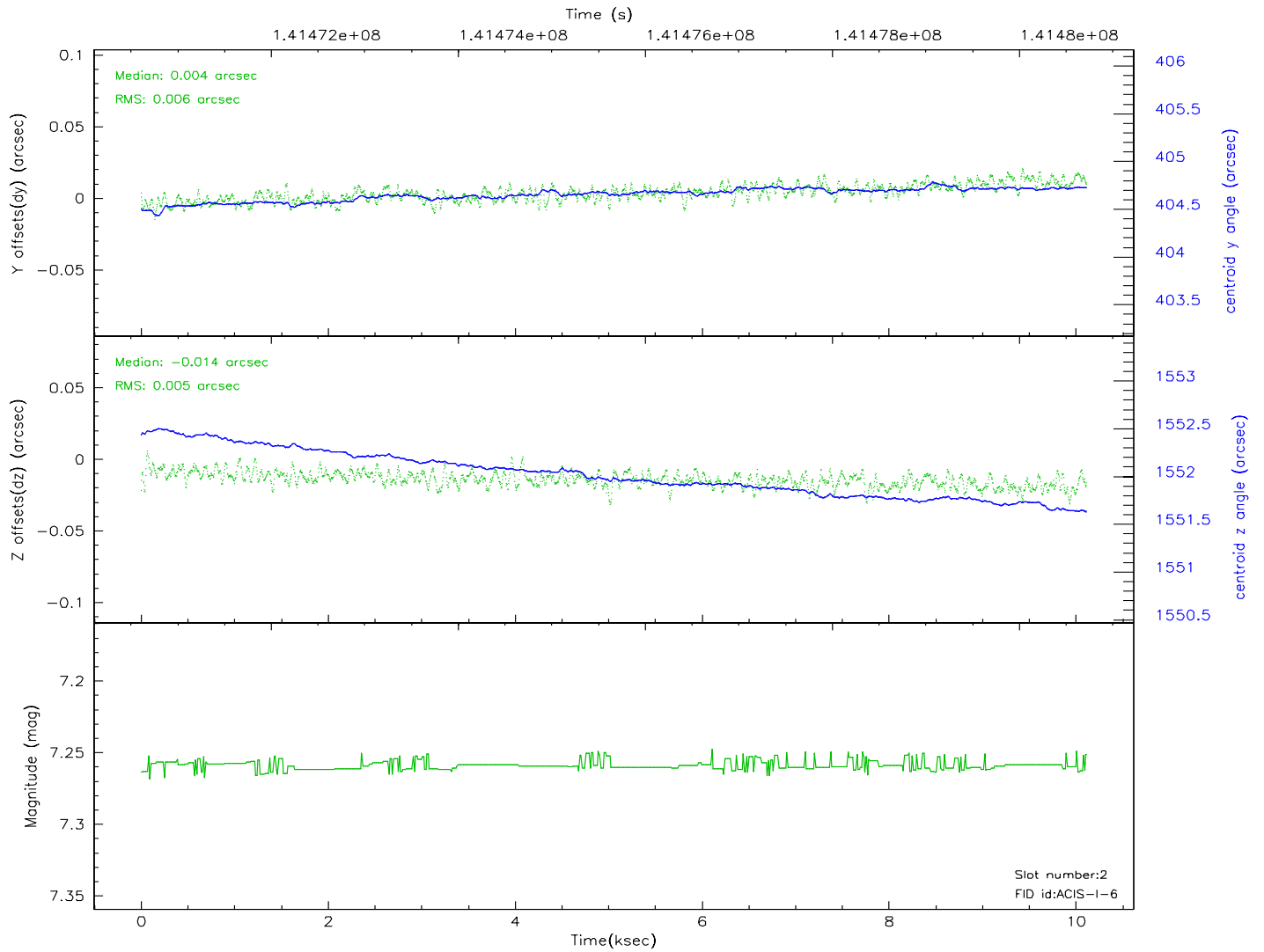
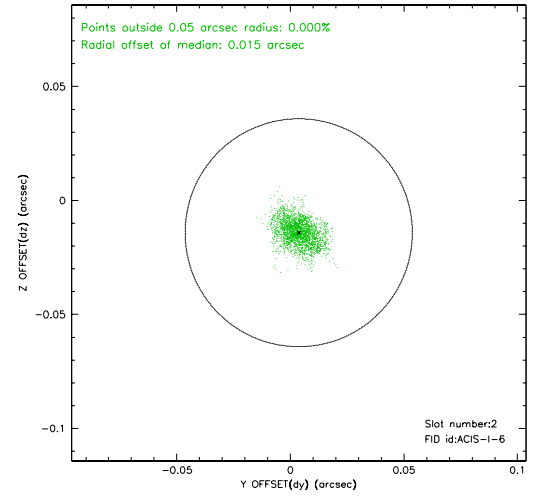
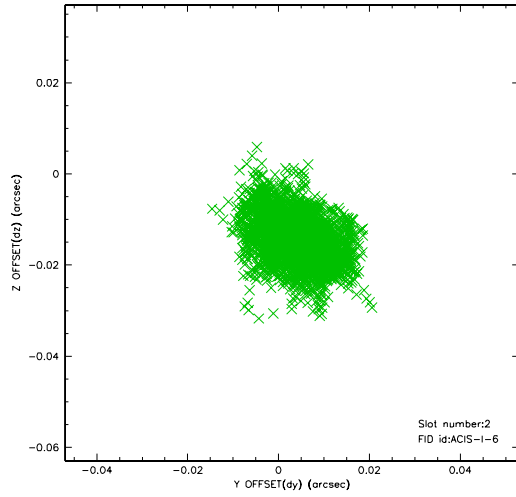
### 2.5.1 Slot 0



## 2.5.2 Slot 1

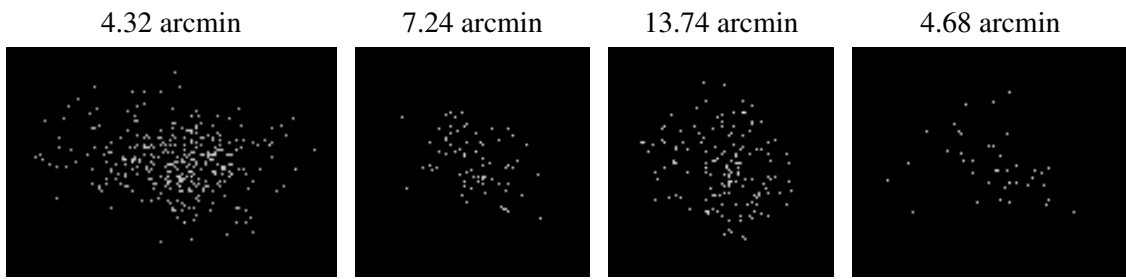


### 2.5.3 Slot 2





### 3 Point Sources



## A Summary

### A.1 Status

V&V Scientist	Jen Lauer
V&V Date (YYYY-MM-DD)	2006.09.21
V&V Edition	1
V&V Disposition and Status	OK
V&V Charge Time	10.109

### A.2 Comments