

# V&V Reference Report

## L2 ASCDS Version : 7.6.8.1

Observation 3215 - L2 Version 001  
Chandra X-Ray Center

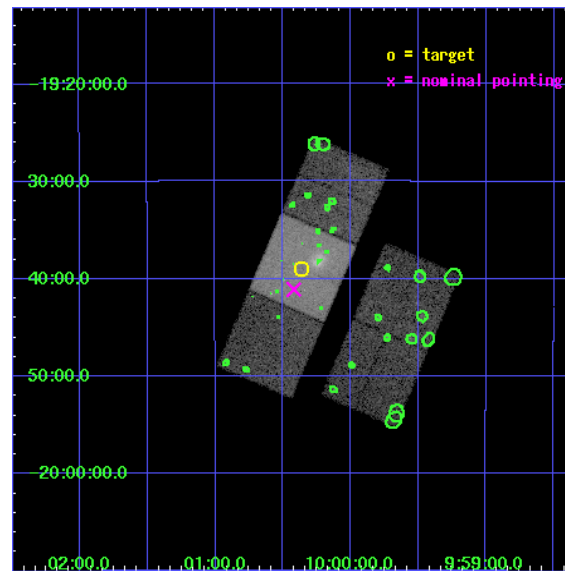
L2 Processing Date : Sep 8 2006

## Contents

<b>1</b>	<b>Front</b>	<b>2</b>
<b>2</b>	<b>OBI</b>	<b>3</b>
2.1	OBI . . . . .	3
2.1.1	Images . . . . .	3
2.1.2	Bias . . . . .	3
2.1.3	Parameters . . . . .	4
2.1.4	Events . . . . .	4
2.2	Compared Parameters . . . . .	5
2.3	Aspect . . . . .	6
2.4	Star Slots . . . . .	9
2.4.1	Slot 3 . . . . .	9
2.4.2	Slot 4 . . . . .	10
2.4.3	Slot 5 . . . . .	11
2.4.4	Slot 6 . . . . .	12
2.4.5	Slot 7 . . . . .	13
2.5	FID Slots . . . . .	14
2.5.1	Slot 0 . . . . .	14
2.5.2	Slot 1 . . . . .	15
2.5.3	Slot 2 . . . . .	16
<b>3</b>	<b>Point Sources</b>	<b>17</b>
<b>A</b>	<b>Summary</b>	<b>18</b>
A.1	Status . . . . .	18
A.2	Comments . . . . .	18

# 1 Front

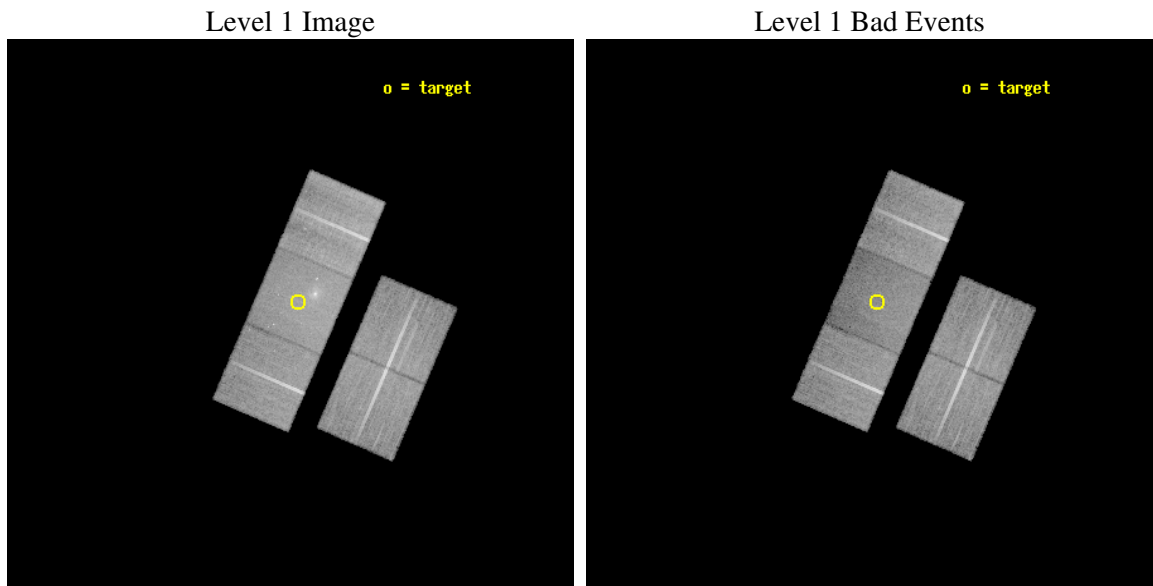
seq_num	800215
obs_id	3215
title	EARLY-TYPE GALAXIES IN GROUPS: STRIPPING AND STIFLING
observer	Professor Trevor Ponman
object	HCG 42
dtcycle	0
cycle	P
ra_targ	150.090833
dec_targ	-19.65
ra_nom	150.10479814323
dec_nom	-19.685033727224
roll_nom	293.32937519381
revision	2
ontime	32106.699938267
livetime	31687.202266965
ontime2	32100.417957872
ontime3	32100.417987764
ontime6	32106.699938267
ontime7	32106.699938267
ontime8	32106.699938267
l2events	139687



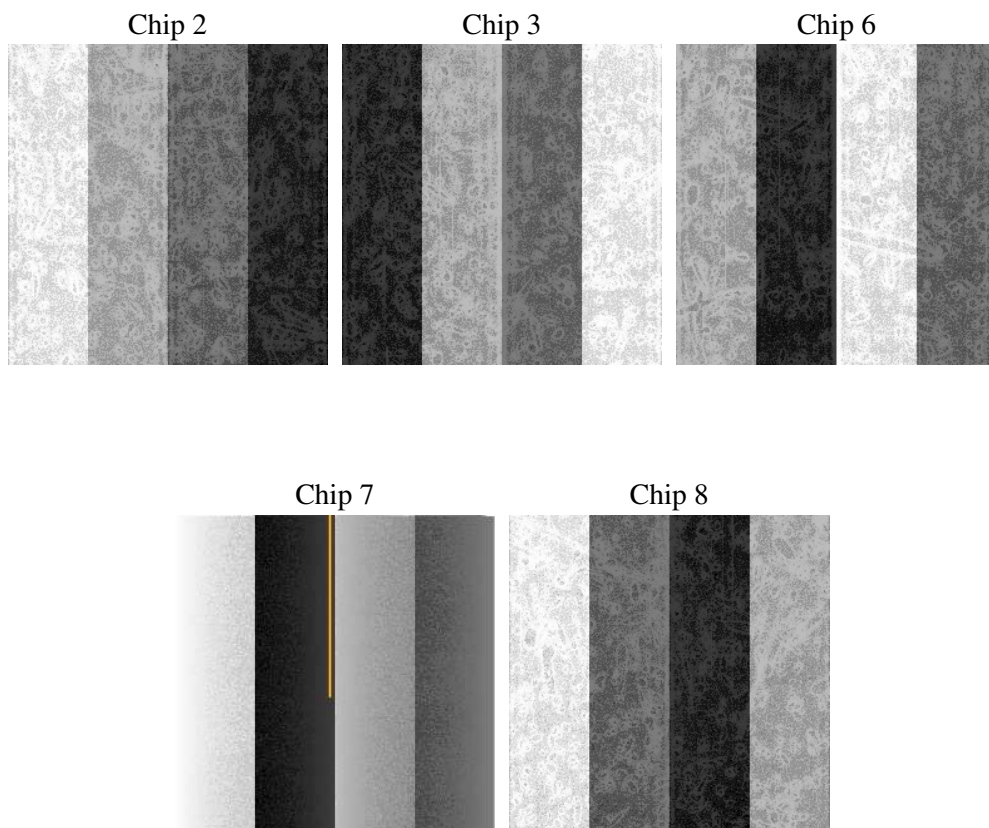
## 2 OBI

### 2.1 OBI

#### 2.1.1 Images



#### 2.1.2 Bias



### 2.1.3 Parameters

obi_num	0
ascdsver	7.6.8.1
caldsver	3.2.3
date	2006-09-08T10:51:33
revision	2

sched_exp_time	32000.000000
ontime	32110.501771376
ontime2	32104.21979098
ontime3	32104.219790936
ontime6	32110.501741439
ontime7	32110.501771376
ontime8	32110.501741439
l1events	882636

### 2.1.4 Events

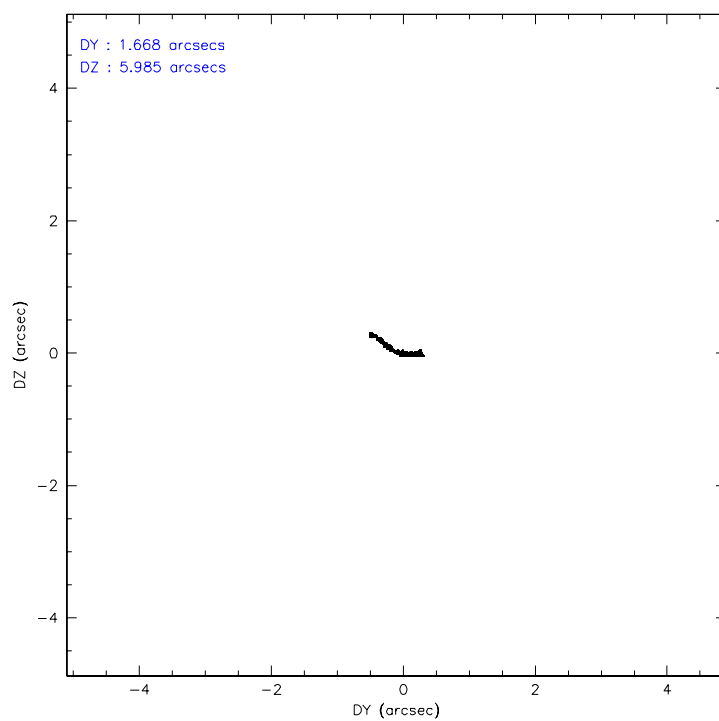
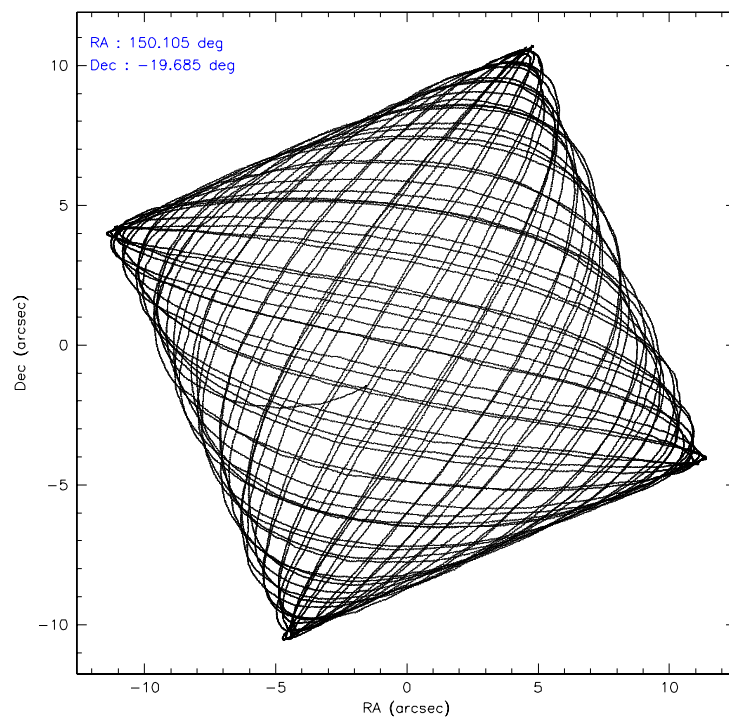
	ccd 2	ccd 3	ccd 6	ccd 7	ccd 8
level 1 events	164676	162026	165272	183876	206786
rejected events	149233	147067	147942	100818	158882
rejected %	90%	90%	89%	54%	76%

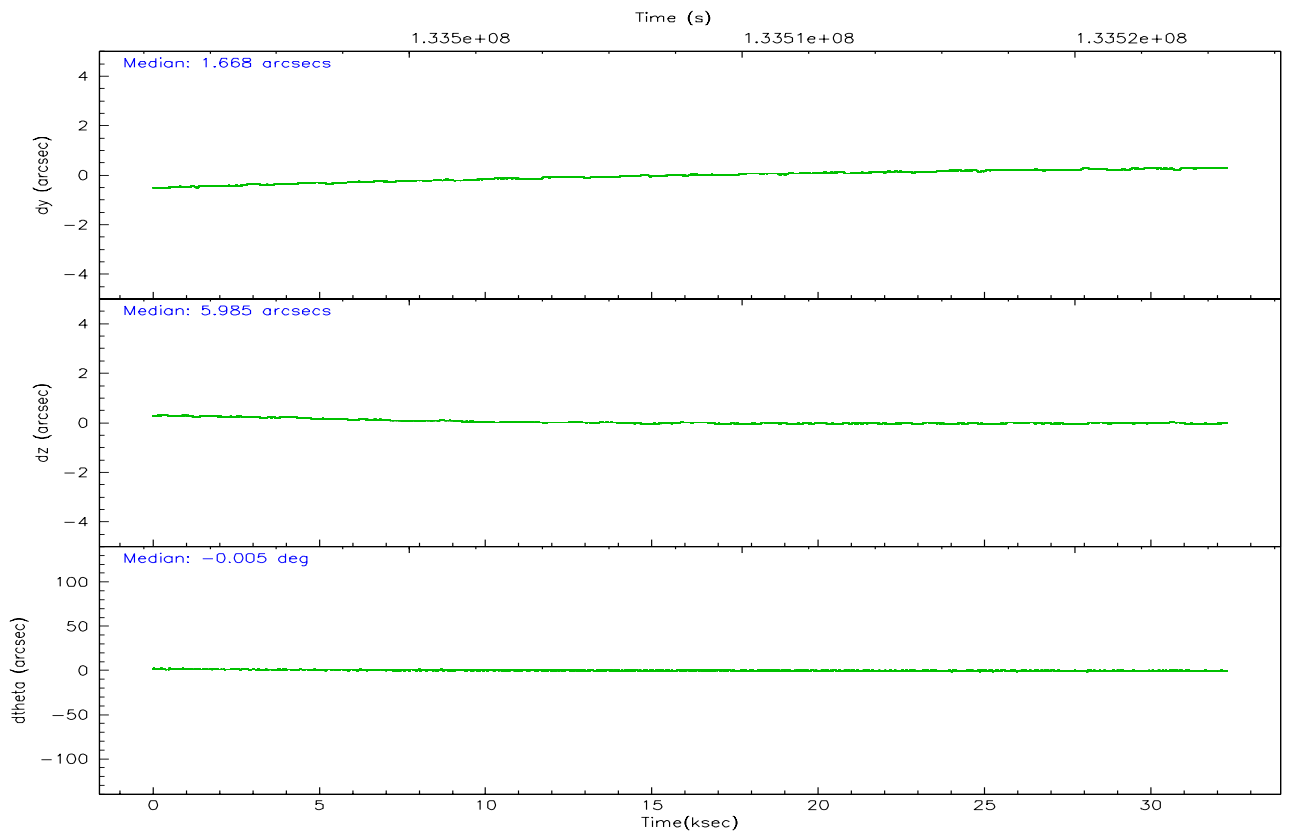
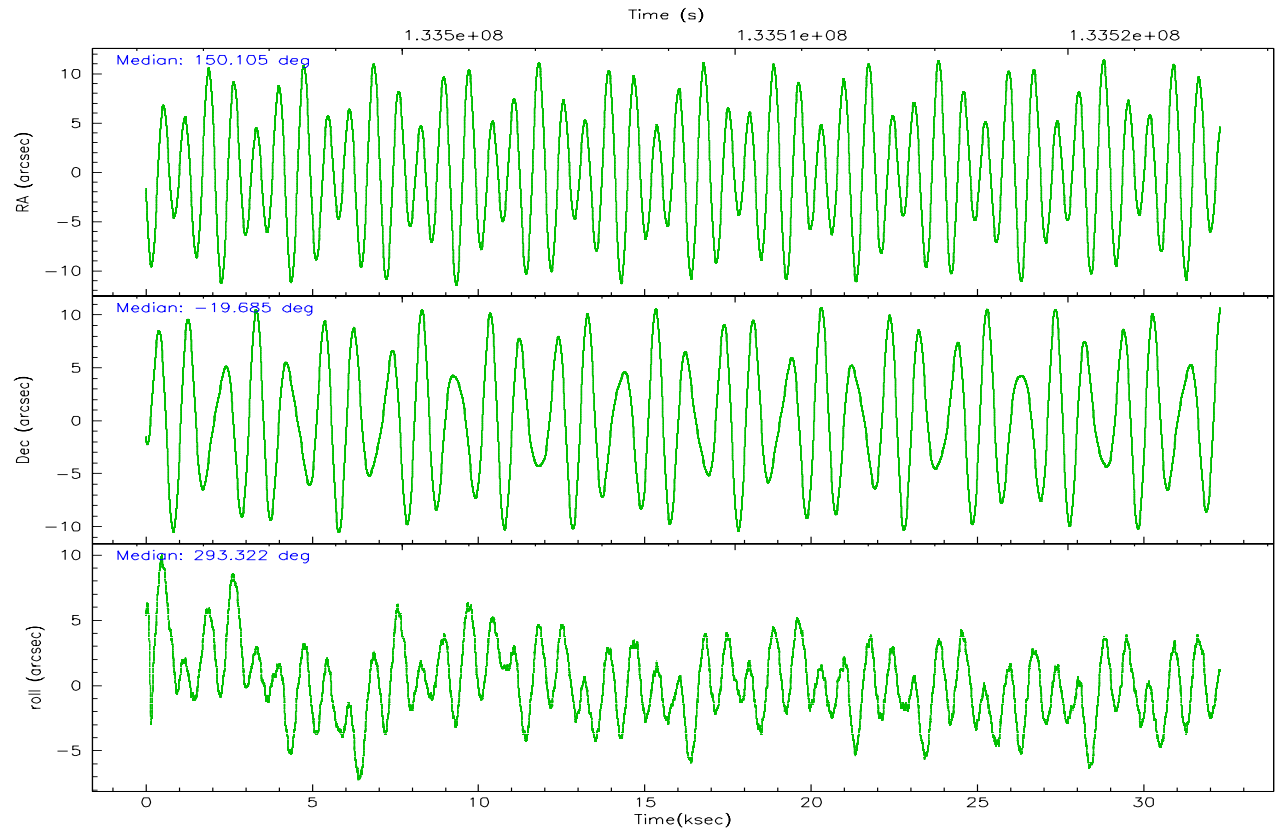
	ccd 2	ccd 3	ccd 6	ccd 7	ccd 8
grade 0 events	5608	5410	6428	8062	15416
	3%	3%	3%	4%	7%
grade 1 events	56	57	68	78	151
	0%	0%	0%	0%	0%
grade 2 events	3497	3096	3594	20692	9796
	2%	1%	2%	11%	4%
grade 3 events	1769	1750	1928	5745	5664
	1%	1%	1%	3%	2%
grade 4 events	1743	1642	1885	5446	5280
	1%	1%	1%	2%	2%
grade 5 events	4879	5713	6426	13448	8623
	2%	3%	3%	7%	4%
grade 6 events	2827	3062	3498	43119	11753
	1%	1%	2%	23%	5%
grade 7 events	144297	141296	141445	87286	150103
	87%	87%	85%	47%	72%

## 2.2 Compared Parameters

Parameter	Planned	Actual	Parameter	Planned	Actual
Instrument	ACIS	ACIS	Obspar format version number	6	6
Detector	ACIS-23678	ACIS-23678	Obspar file type	PREDICTED	ACTUAL
Grating	NONE	NONE	Obspar update status	NONE	UPDATED
Data mode	VFAINT	VFAINT	On-chip summing requested	N	N
Observation mode	POINTING	POINTING	Subarray requested	NONE	NONE
Pointing RA	150.081384	150.1047981432282	Alternating exposures requested	N	N
Pointing Dec	-19.669037	-19.68503372722449	Primary exposure time	0.000000	3.1
Pointing Roll	293.164859	293.3293751938113			
SIM focus pos (mm)	-0.684267	-0.6828225247311905			
SIM defocus (mm)	0	0.001444936568705701			
SIM translation stage pos (mm)	-190.132523	-190.1400660498719			
SIM translation stage offset (mm)	0	0.00754346686406393			
Observation start time	133492586.184000	133491572.19237			
Observation start date	2002-03-26T01:15:22	2002-03-26T00:59:32			
Observation end time	133524586.184000	133525027.16873			
Observation end date	2002-03-26T10:08:42	2002-03-26T10:17:07			
Read mode	TIMED	TIMED			

## 2.3 Aspect





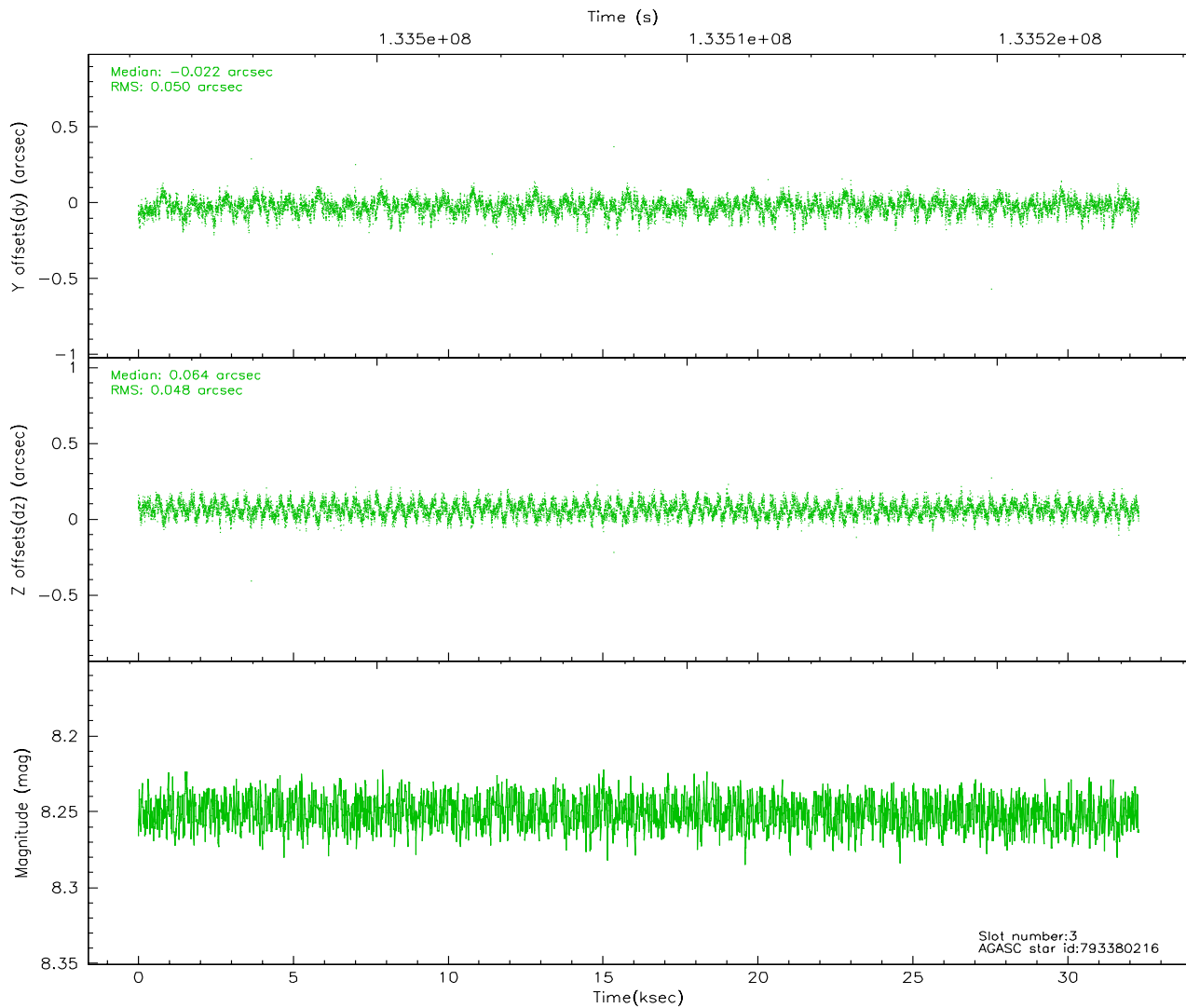
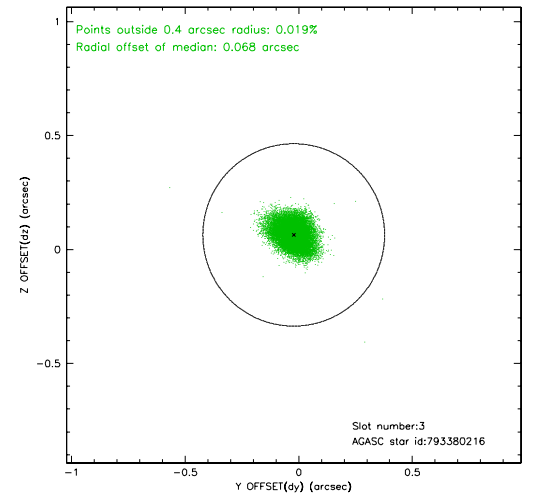
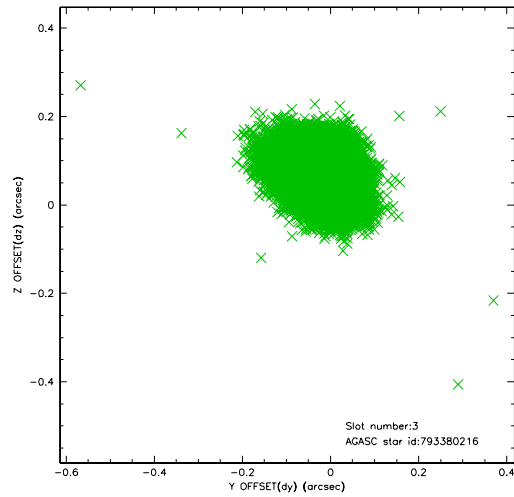
### Slot Statistics

slot	status	id	mag	n_pts	med_dy	med_dz	dr1	dr2	ra	dec	mean_y	mean_z
0	FID	ACIS-S-2	7.12	7878	-0.039	0.029	0.007	0.012	0.000000	0.000000	-754.24	-1727.16
1	FID	ACIS-S-4	7.21	7878	-0.059	0.011	0.005	0.009	0.000000	0.000000	2158.95	181.31
2	FID	ACIS-S-5	7.24	7878	0.067	-0.031	0.006	0.010	0.000000	0.000000	-1806.94	174.92
3	GUIDE	793380216	8.25	15756	-0.022	0.064	0.073	0.118	149.824574	-20.173187	1328.68	-1511.34
4	GUIDE	793514688	8.93	15754	-0.136	-0.068	0.066	0.109	150.387438	-20.266780	2386.49	104.24
5	GUIDE	793517464	9.18	15748	0.008	0.083	0.096	0.158	150.334473	-19.673349	353.05	783.19
6	GUIDE	793389248	9.61	15745	0.009	-0.054	0.116	0.188	149.607484	-20.291545	1434.02	-2352.75
7	GUIDE	793380208	9.92	15741	0.146	-0.023	0.143	0.231	149.955204	-20.174015	1504.87	-1106.51

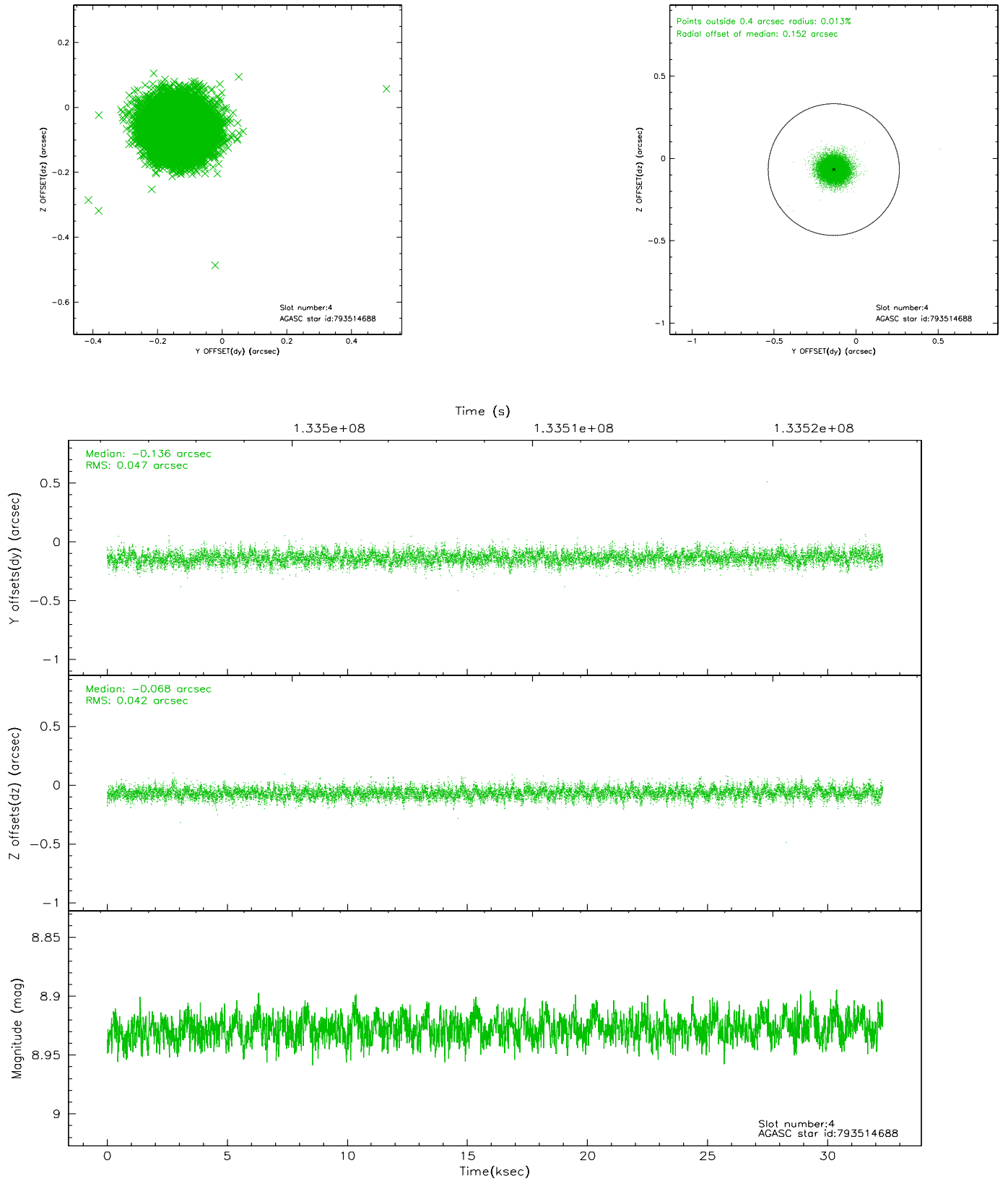


## 2.4 Star Slots

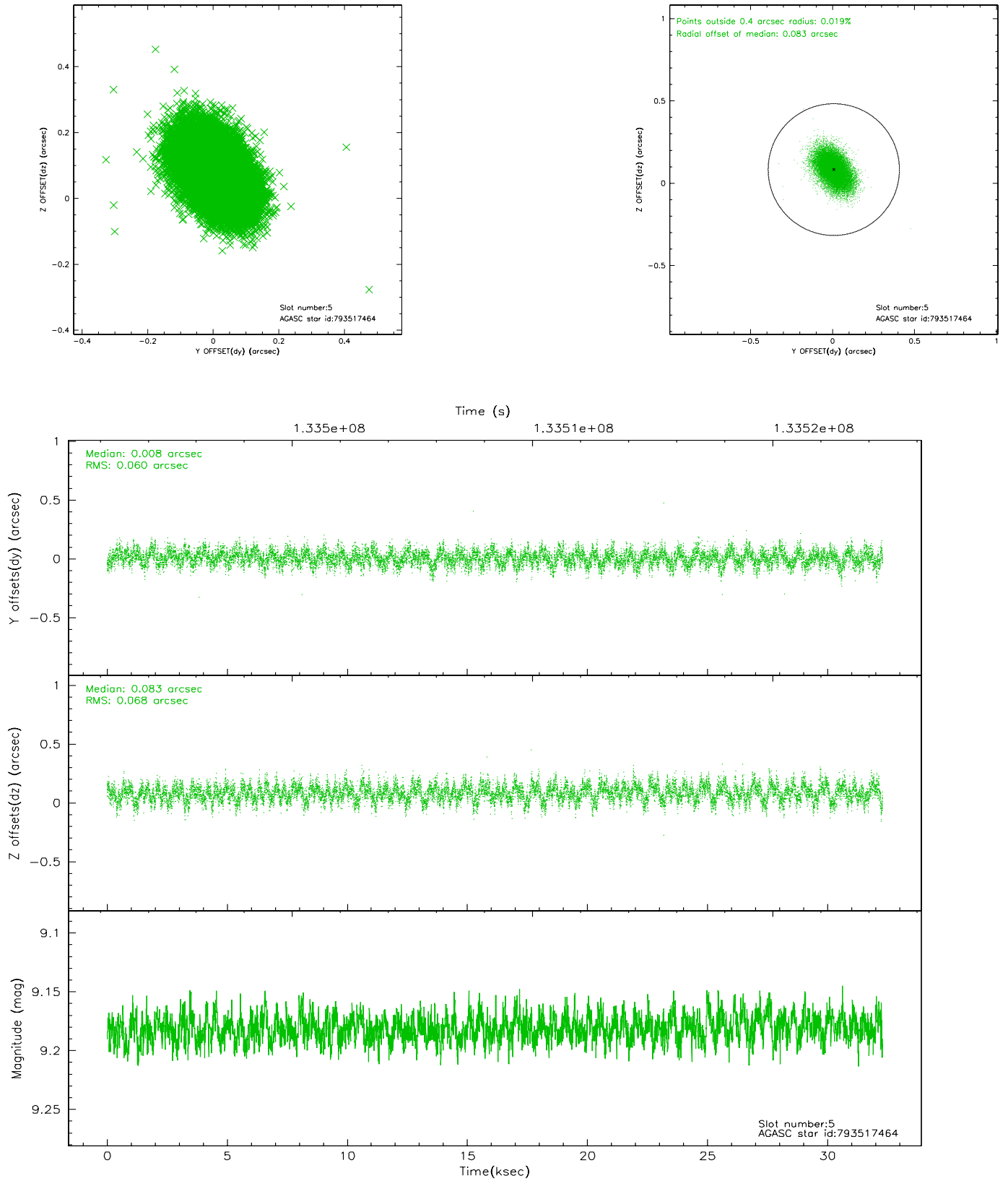
### 2.4.1 Slot 3



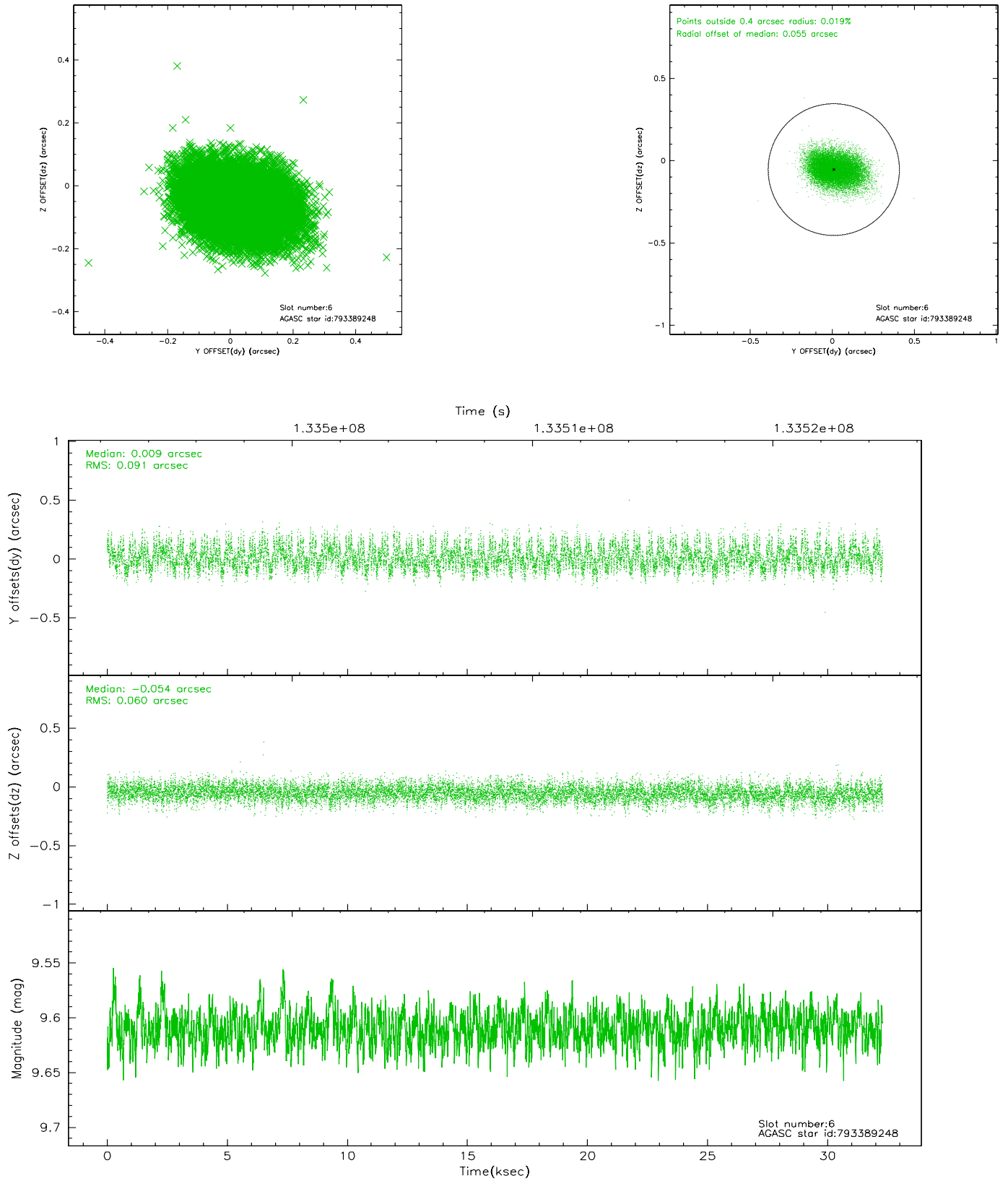
## 2.4.2 Slot 4



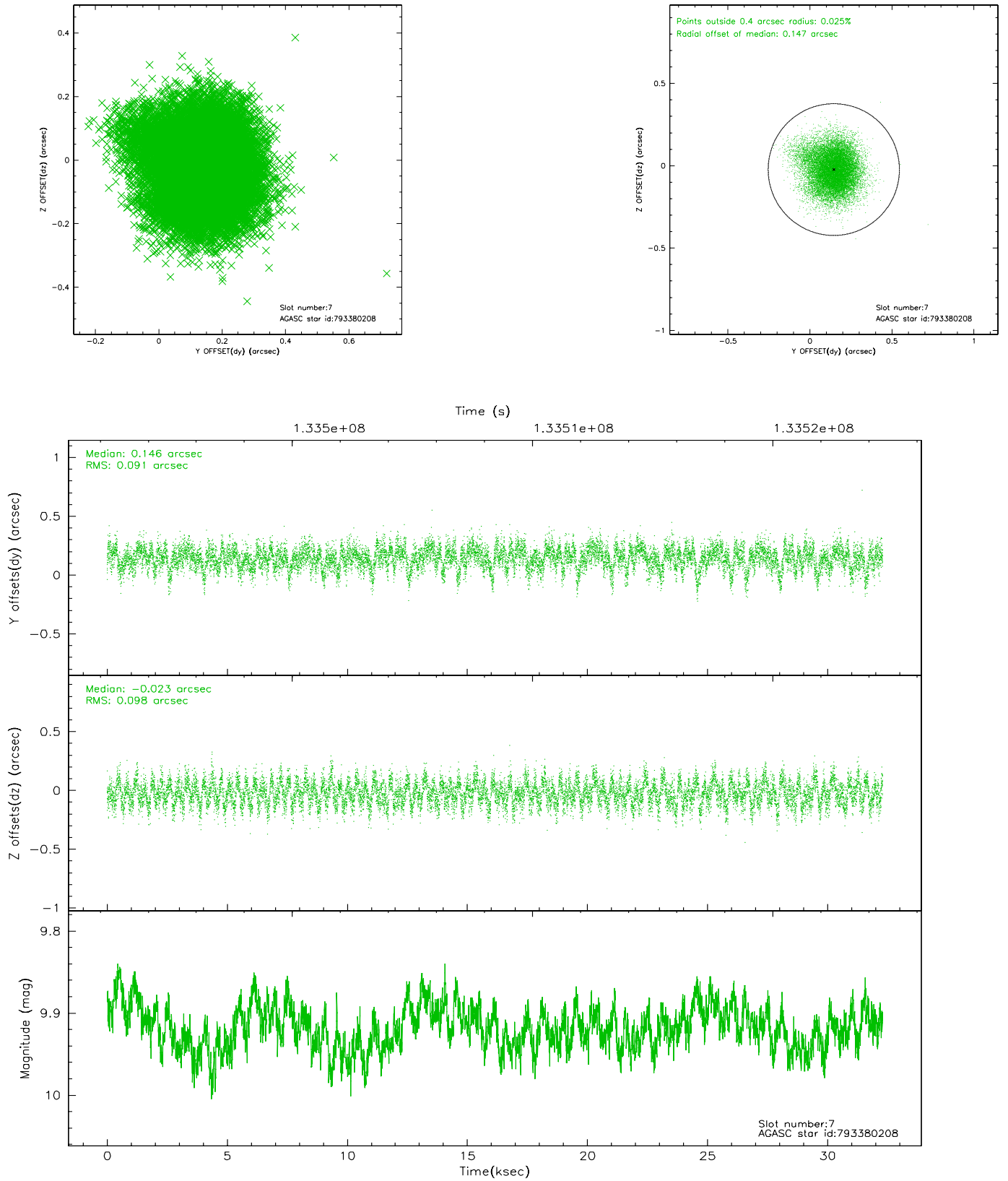
### 2.4.3 Slot 5



## 2.4.4 Slot 6

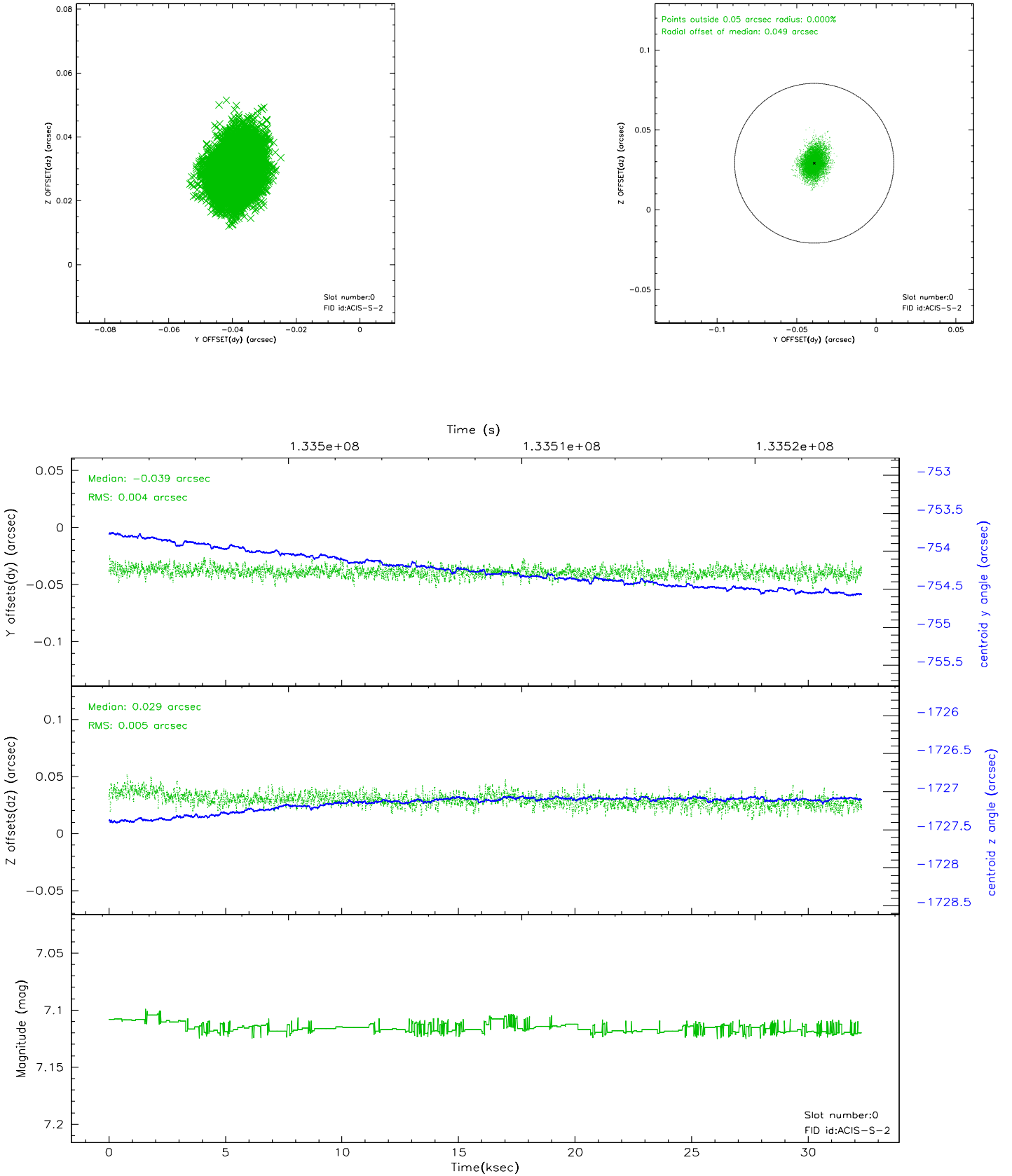


## 2.4.5 Slot 7

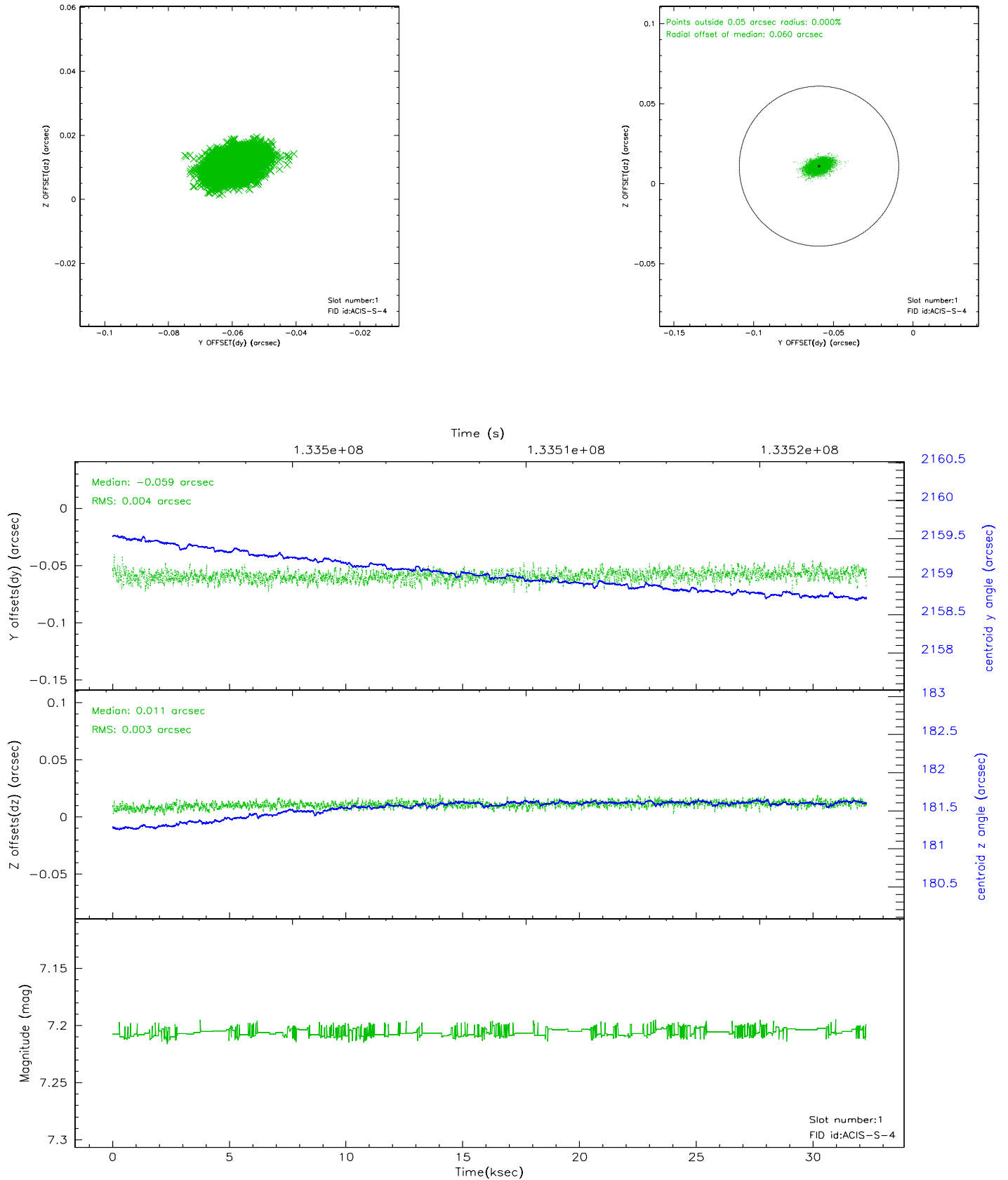


## 2.5 FID Slots

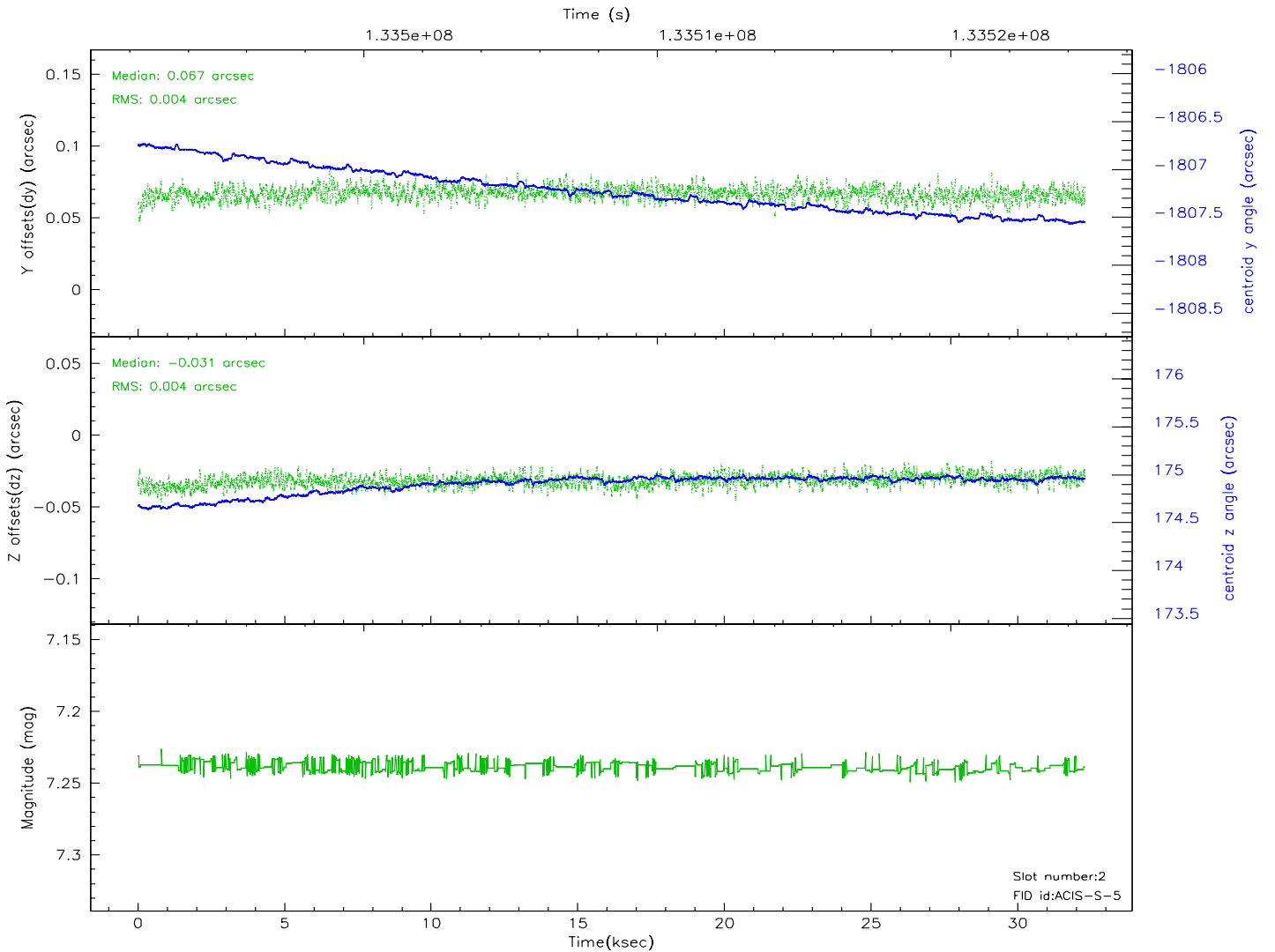
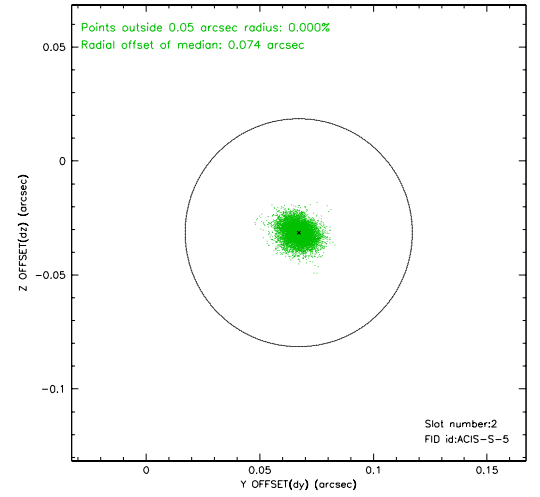
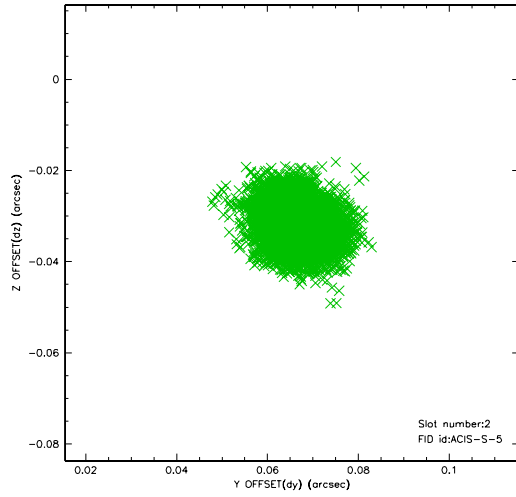
### 2.5.1 Slot 0



## 2.5.2 Slot 1

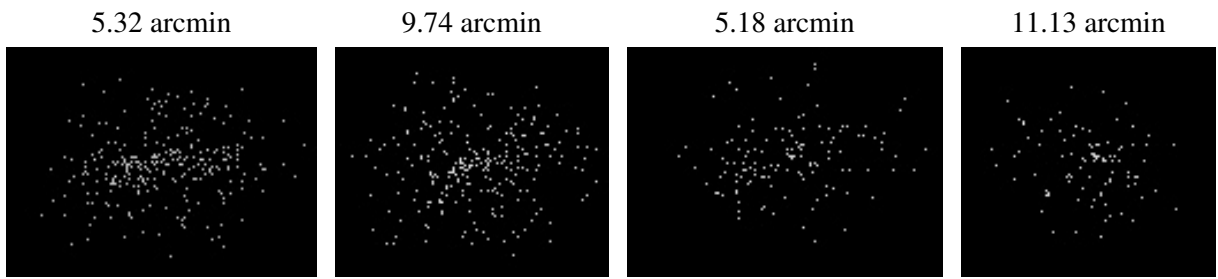


### 2.5.3 Slot 2





### 3 Point Sources



## A Summary

### A.1 Status

V&V Scientist	Jen Lauer
V&V Date (YYYY-MM-DD)	2006.09.08
V&V Edition	1
V&V Disposition and Status	OK
V&V Charge Time	32.106

### A.2 Comments