

V&V Reference Report

L2 ASCDS Version : 7.6.9

Observation 3210 - L2 Version 001
Chandra X-Ray Center

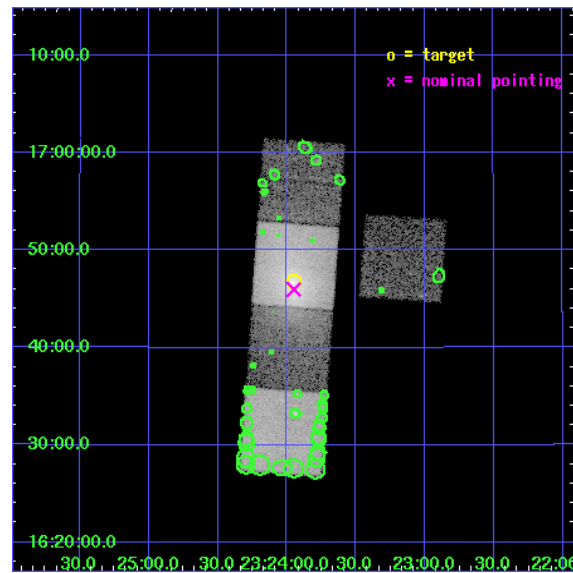
L2 Processing Date : Oct 11 2006

Contents

1	Front	2
2	OBI	3
2.1	OBI	3
2.1.1	Images	3
2.1.2	Bias	3
2.1.3	Parameters	4
2.1.4	Events	4
2.2	Compared Parameters	5
2.3	Aspect	6
2.4	Star Slots	9
2.4.1	Slot 3	9
2.4.2	Slot 4	10
2.4.3	Slot 5	11
2.4.4	Slot 6	12
2.4.5	Slot 7	13
2.5	FID Slots	14
2.5.1	Slot 0	14
2.5.2	Slot 1	15
2.5.3	Slot 2	16
3	Point Sources	17
A	Summary	18
A.1	Status	18
A.2	Comments	18

1 Front

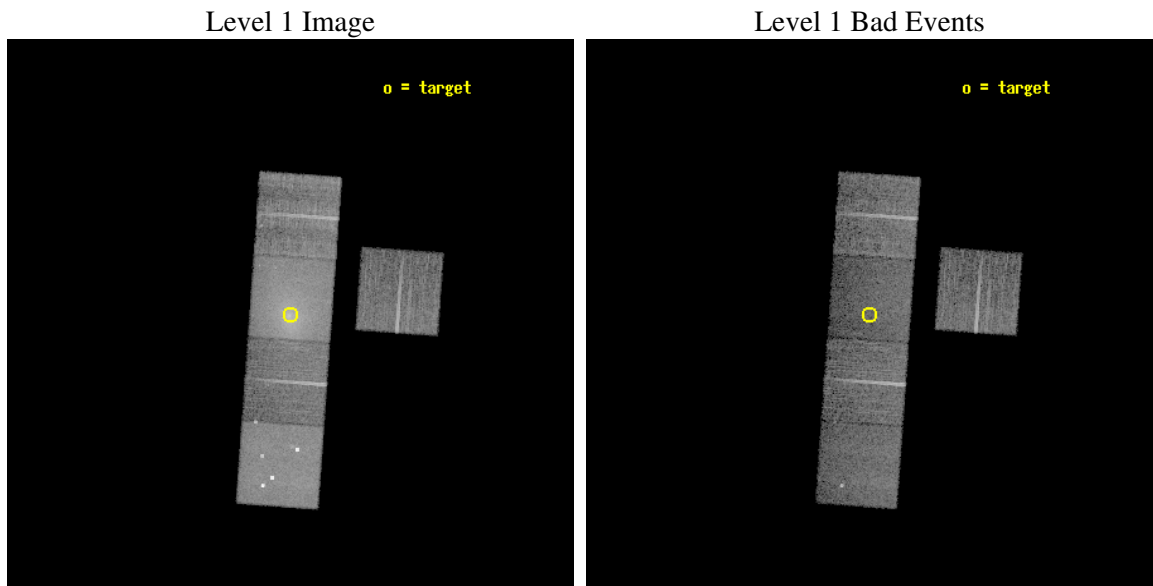
seq_num	800210
obs_id	3210
title	CLUSTER DARK MATTER ON THE SMALLEST SCALES
observer	Prof. David Buote
object	A2589
dtcycle	0
cycle	P
ra_targ	350.988333
dec_targ	16.778611
ra_nom	350.98745988711
dec_nom	16.766205933913
roll_nom	274.12143867072
revision	3
ontime	13856.999973357
livetime	13675.94806733
ontime3	13856.999973357
ontime5	13853.858973205
ontime6	13856.999973357
ontime7	13856.999973357
ontime8	13850.718002975
l2events	218654



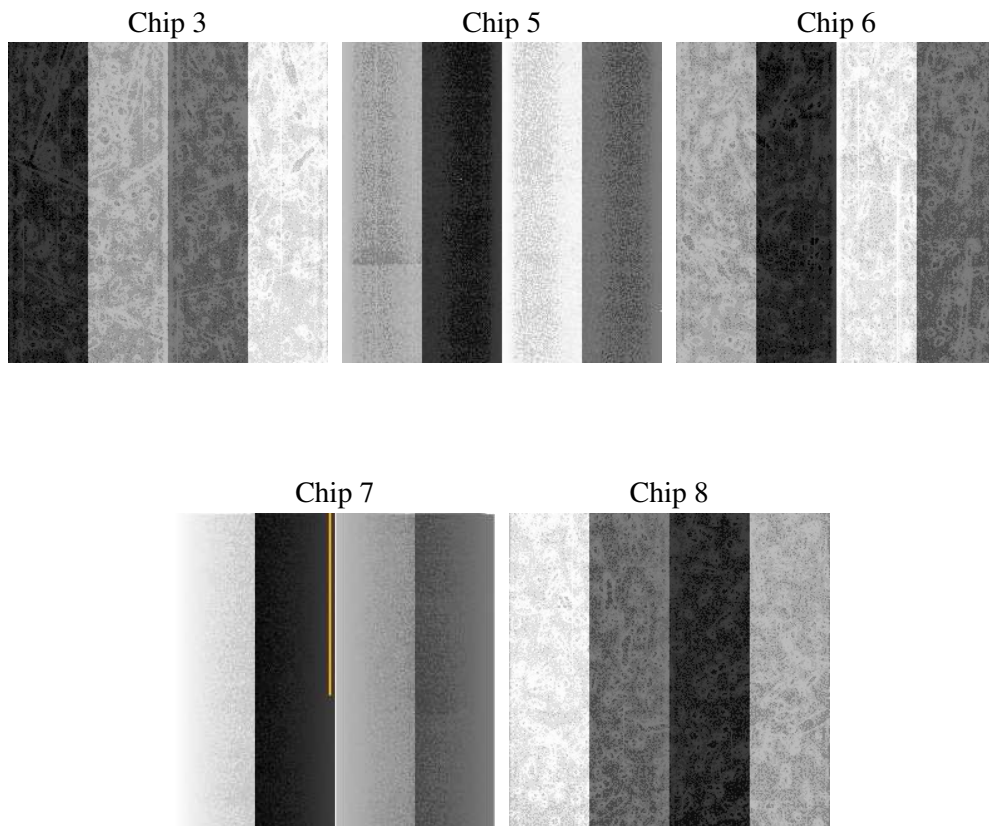
2 OBI

2.1 OBI

2.1.1 Images



2.1.2 Bias



2.1.3 Parameters

obi_num	1
ascdsver	7.6.9
caldsver	3.2.3
date	2006-10-11T22:40:18
revision	3

sched_exp_time	13751.884000
ontime	13861.26009652
ontime3	13861.26009652
ontime5	13858.119116306
ontime6	13861.26009652
ontime7	13861.26009652
ontime8	13854.978126138
l1events	560676

2.1.4 Events

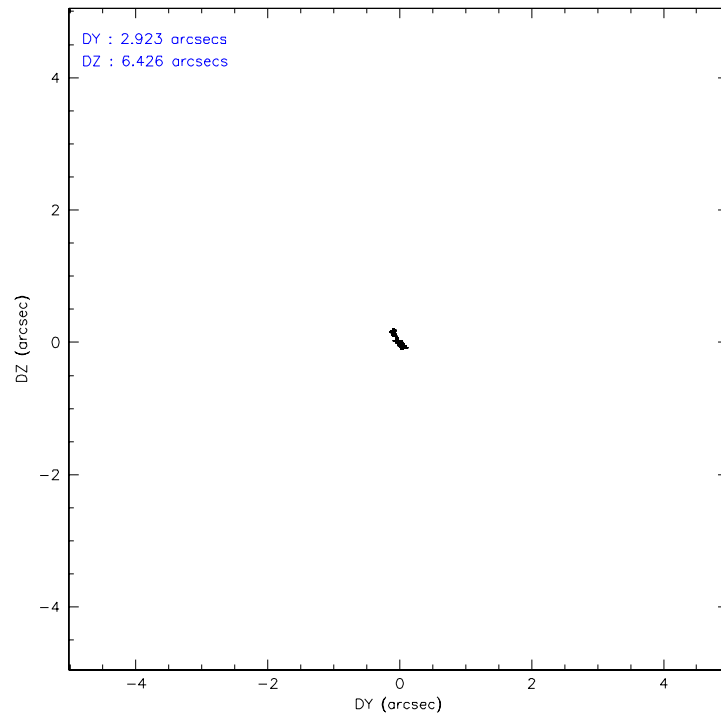
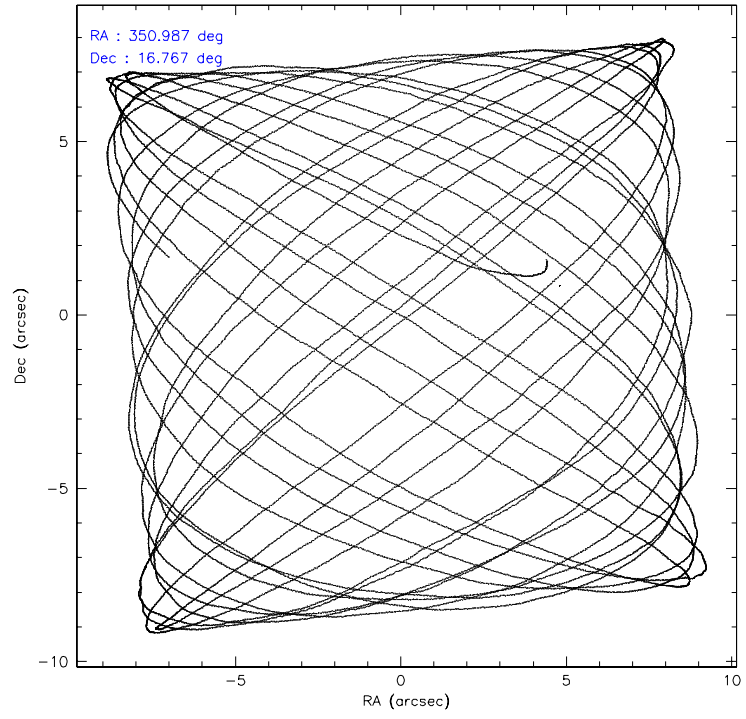
	ccd 3	ccd 5	ccd 6	ccd 7	ccd 8
level 1 events	74072	143141	84350	156505	102608
rejected events	65487	55420	66301	47610	71228
rejected %	88%	38%	78%	30%	69%

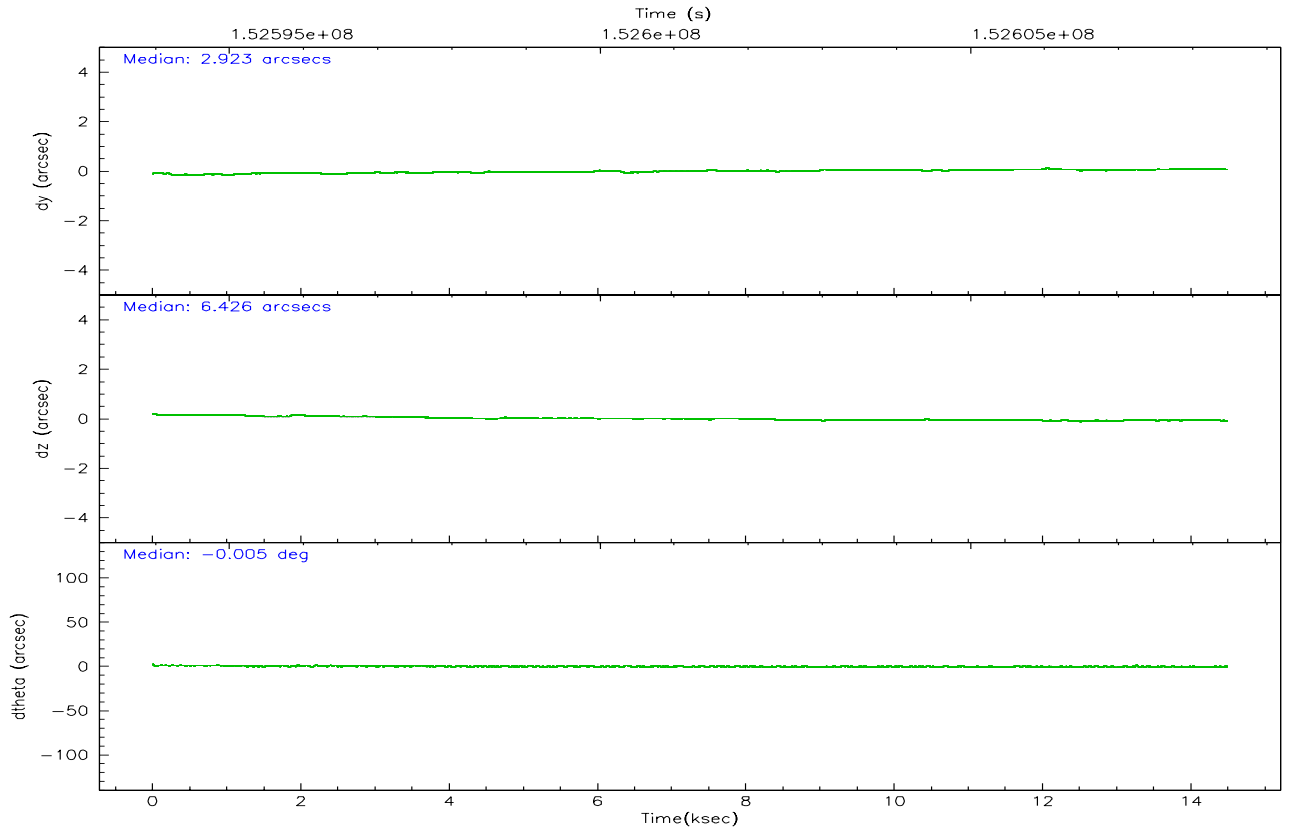
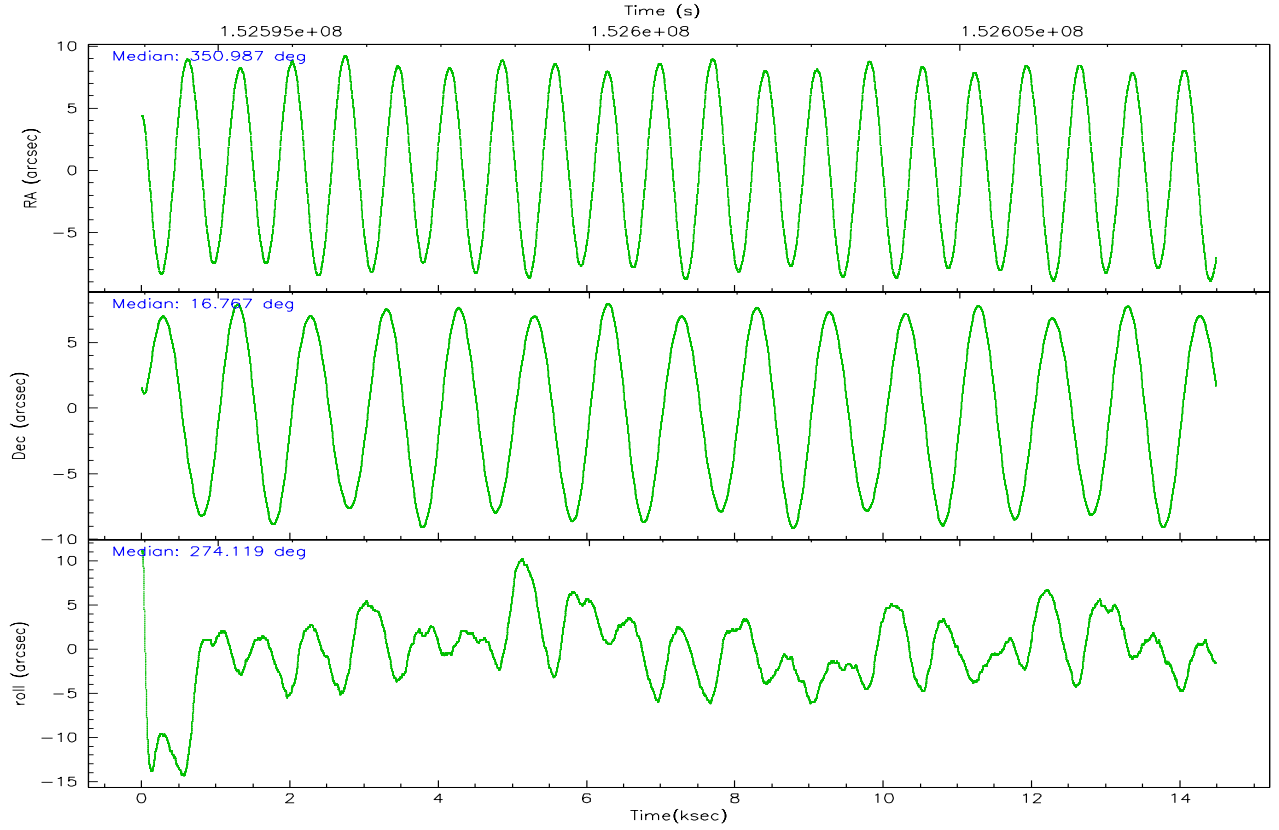
	ccd 3	ccd 5	ccd 6	ccd 7	ccd 8
grade 0 events	3934	16070	11491	18778	12207
	5%	11%	13%	11%	11%
grade 1 events	38	97	60	51	89
	0%	0%	0%	0%	0%
grade 2 events	1561	27100	2578	27539	5252
	2%	18%	3%	17%	5%
grade 3 events	837	2855	1080	9245	3815
	1%	1%	1%	5%	3%
grade 4 events	836	2804	1114	9093	3535
	1%	1%	1%	5%	3%
grade 5 events	2689	5776	2674	6484	3976
	3%	4%	3%	4%	3%
grade 6 events	1418	38934	1790	44291	6654
	1%	27%	2%	28%	6%
grade 7 events	62759	49505	63563	41024	67080
	84%	34%	75%	26%	65%

2.2 Compared Parameters

Parameter	Planned	Actual	Parameter	Planned	Actual
Instrument	ACIS	ACIS	Obspar format version number	6	6
Detector	ACIS-35678	ACIS-35678	Obspar file type	PREDICTED	ACTUAL
Grating	NONE	NONE	Obspar update status	NONE	UPDATED
Data mode	VFAINT	VFAINT	Number of optional ACIS chips dropped	0	0
Observation mode	POINTING	POINTING	On-chip summing requested	N	N
Pointing RA	350.971213	350.9874598871126	Subarray requested	NONE	NONE
Pointing Dec	16.788496	16.76620593391297	Alternating exposures requested	N	N
Pointing Roll	273.969474	274.121438670719	Primary exposure time	0.000000	3.1
SIM focus pos (mm)	-0.684267	-0.6828225247311905			
SIM defocus (mm)	0	0.001444936568705701			
SIM translation stage pos (mm)	-190.132523	-190.1425803651734			
SIM translation stage offset (mm)	0	0.01005778216563158			
Observation start time	152594707.184000	152593471.95167			
Observation start date	2002-11-02T03:24:03	2002-11-02T03:04:31			
Observation end time	152608459.184000	152608773.66481			
Observation end date	2002-11-02T07:13:15	2002-11-02T07:19:33			
Read mode	TIMED	TIMED			

2.3 Aspect



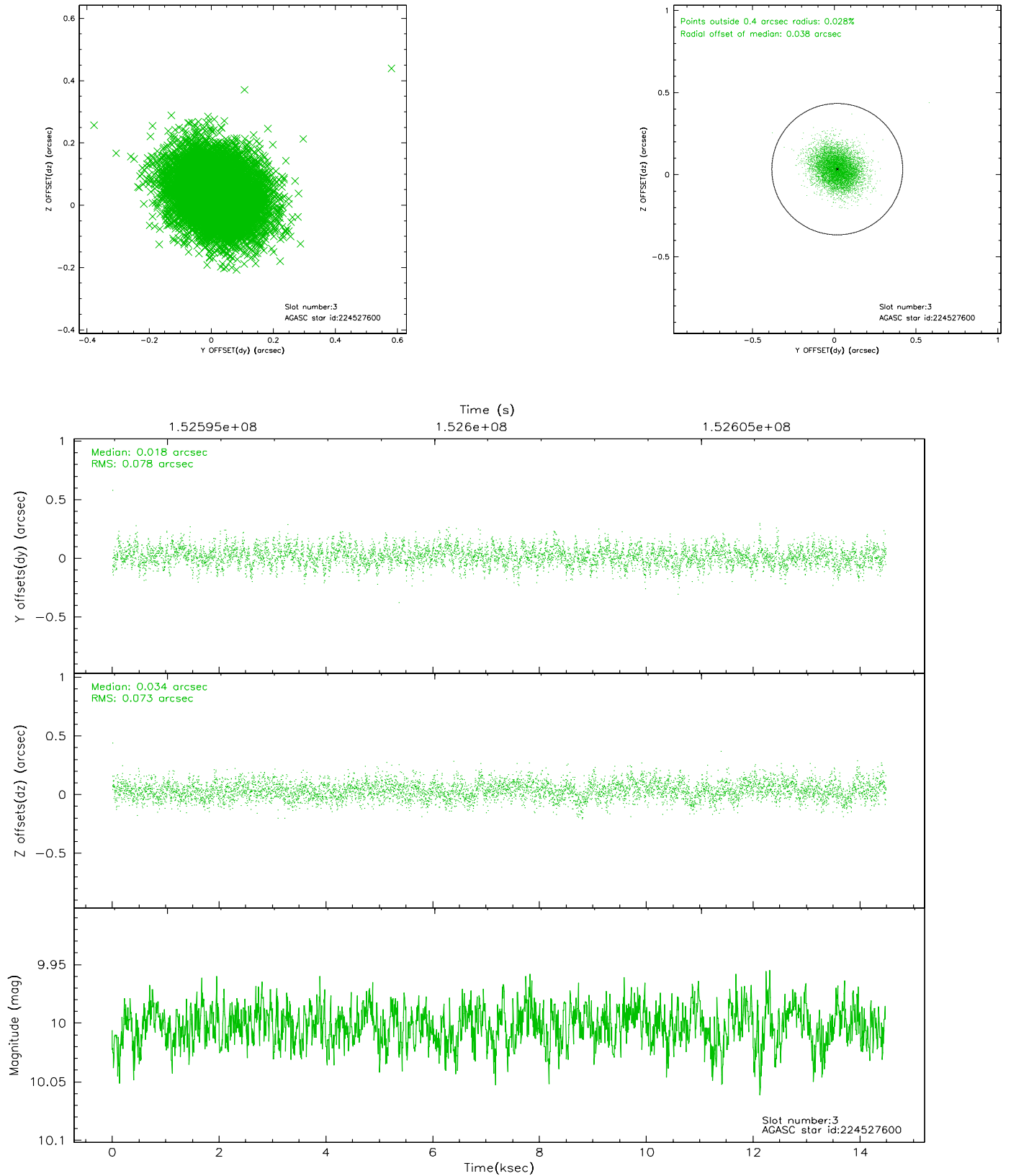


Slot Statistics

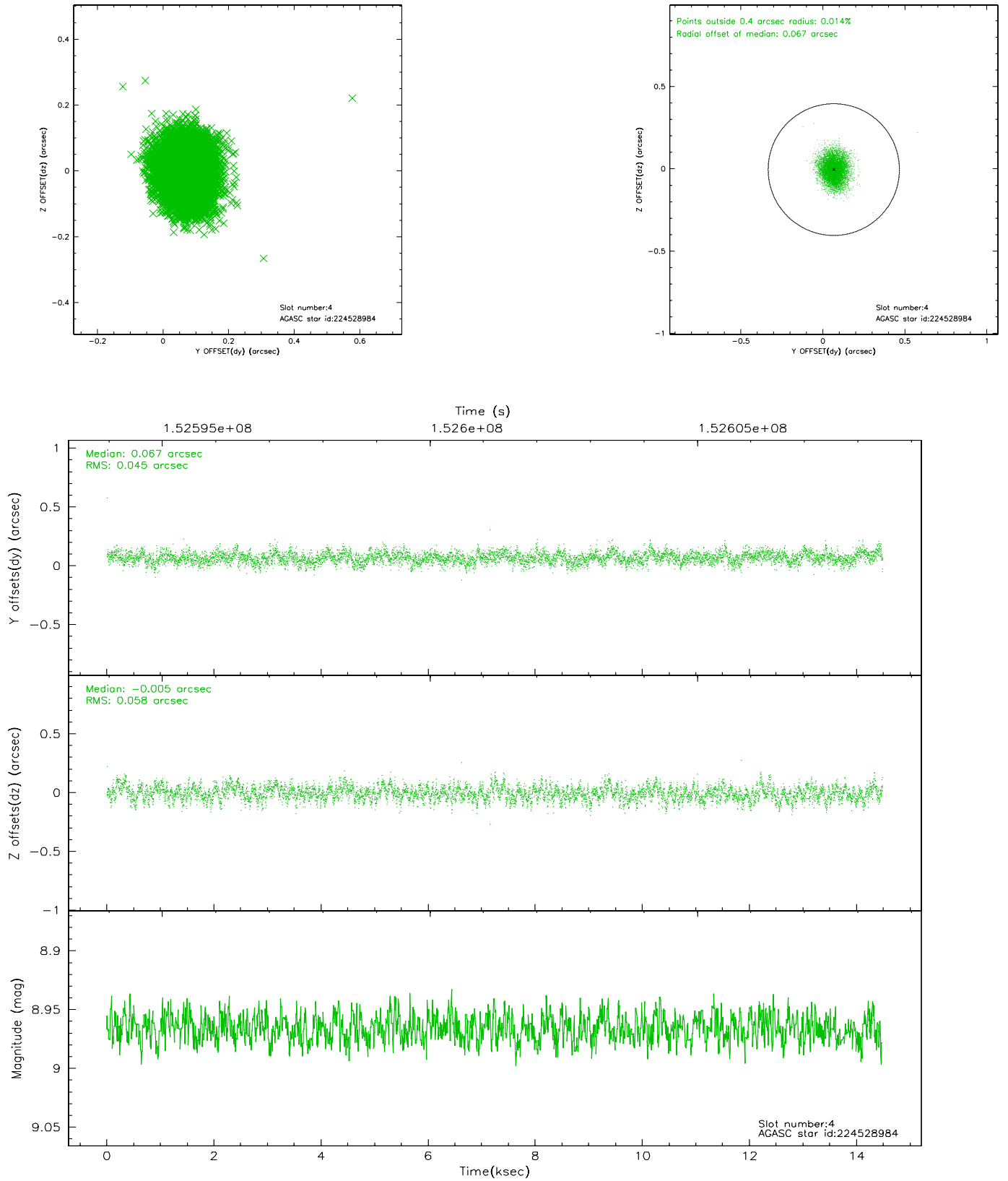
slot	status	id	mag	n_pts	med_dy	med_dz	dr1	dr2	ra	dec	mean_y	mean_z
0	FID	ACIS-S-2	7.12	3531	-0.025	0.024	0.007	0.011	0.000000	0.000000	-755.55	-1727.52
1	FID	ACIS-S-4	7.21	3532	-0.038	0.006	0.007	0.012	0.000000	0.000000	2157.54	180.66
2	FID	ACIS-S-5	7.24	3533	0.033	-0.021	0.007	0.011	0.000000	0.000000	-1807.95	174.60
3	GUIDE	224527600	10.00	7060	0.018	0.034	0.114	0.184	351.354290	17.243672	-1543.36	1428.93
4	GUIDE	224528984	8.97	7066	0.067	-0.005	0.077	0.126	350.492856	16.632535	445.48	-1682.07
5	GUIDE	224529264	6.94	7066	-0.253	-0.123	0.058	0.096	350.240090	17.252650	-1844.43	-2390.50
6	GUIDE	224529752	9.41	7049	0.031	-0.017	0.095	0.155	351.100809	16.483138	1128.64	371.28
7	GUIDE	224531944	9.23	7048	0.137	0.123	0.083	0.134	350.741588	16.203421	2047.63	-936.18

2.4 Star Slots

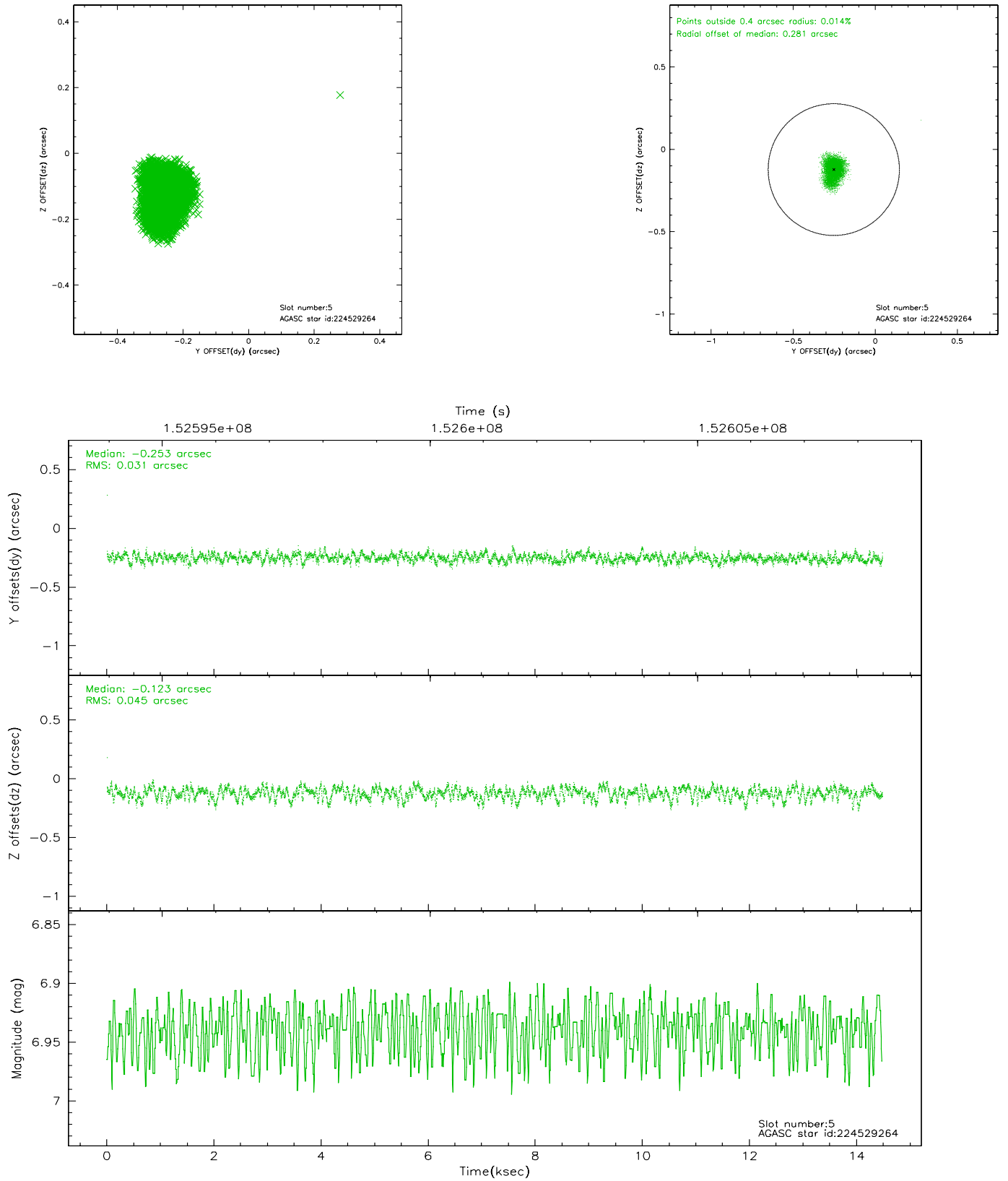
2.4.1 Slot 3



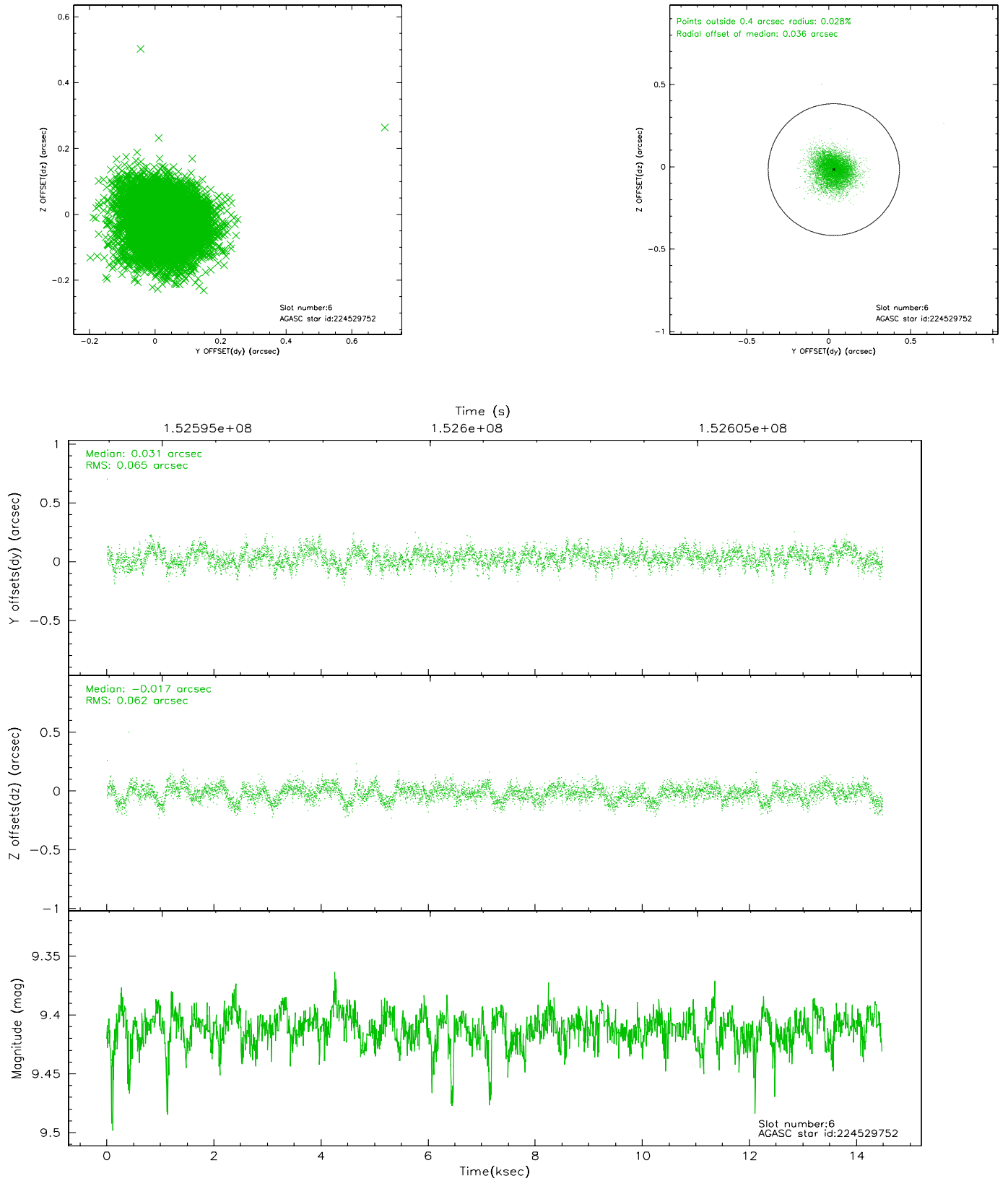
2.4.2 Slot 4



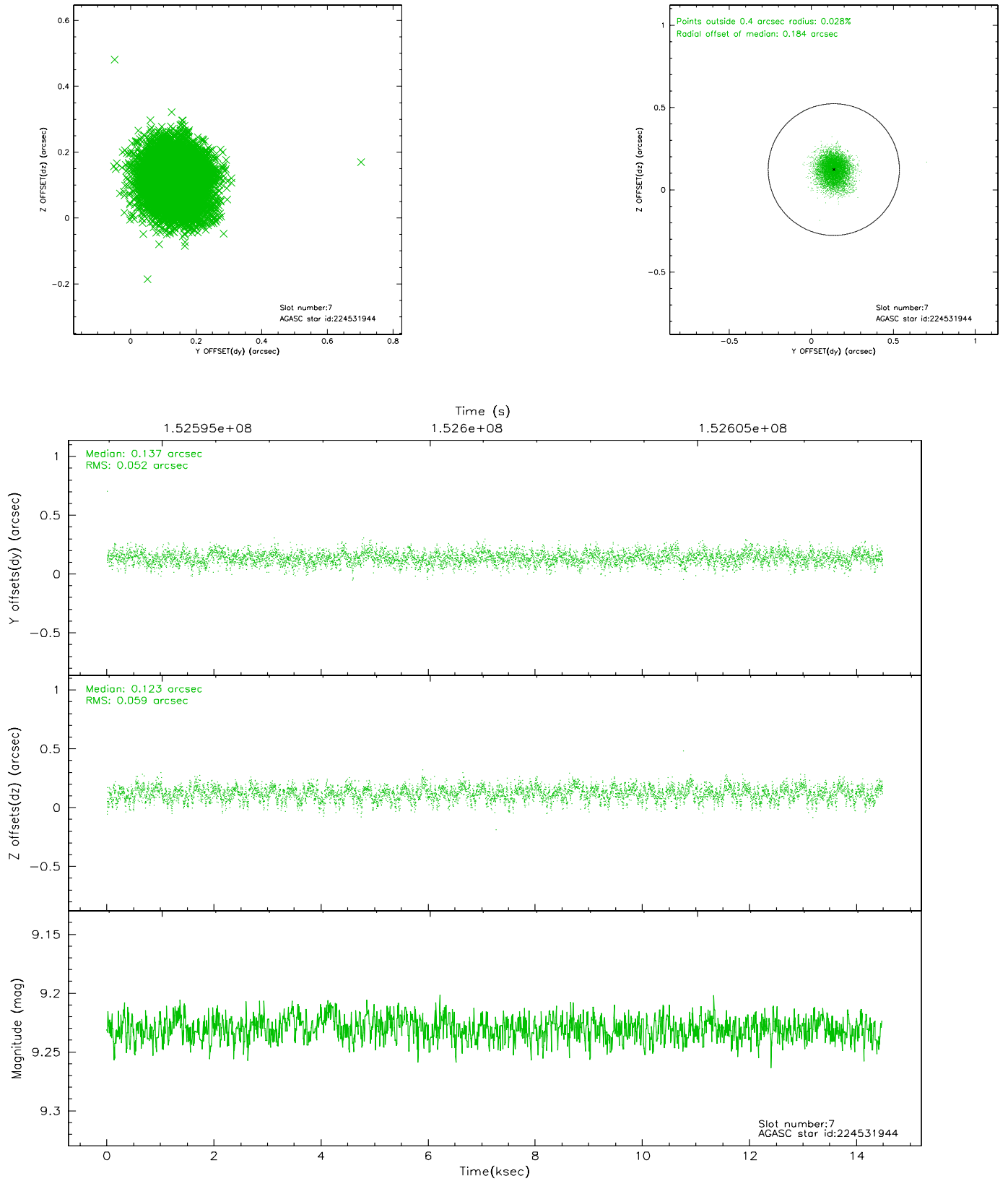
2.4.3 Slot 5



2.4.4 Slot 6

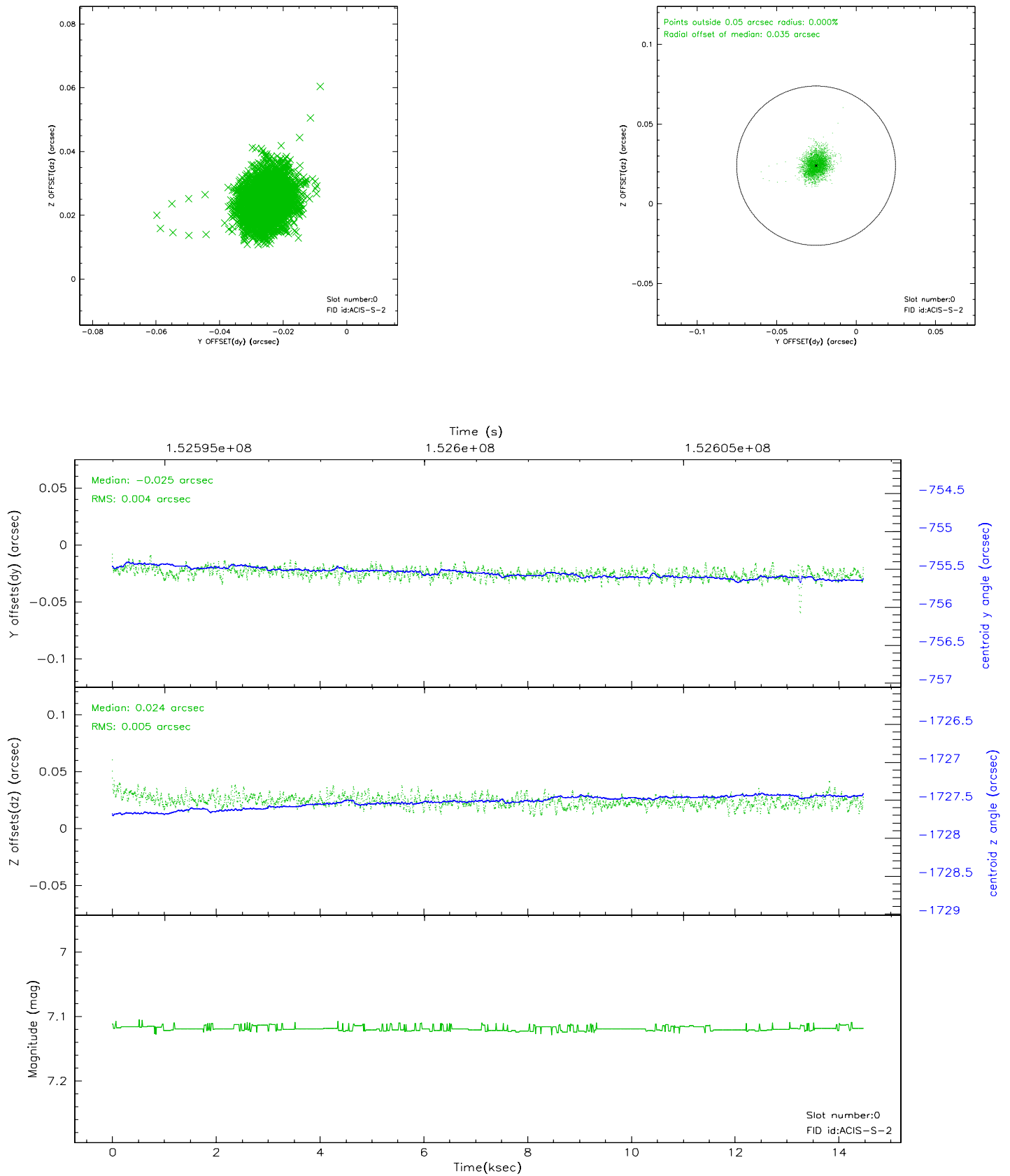


2.4.5 Slot 7

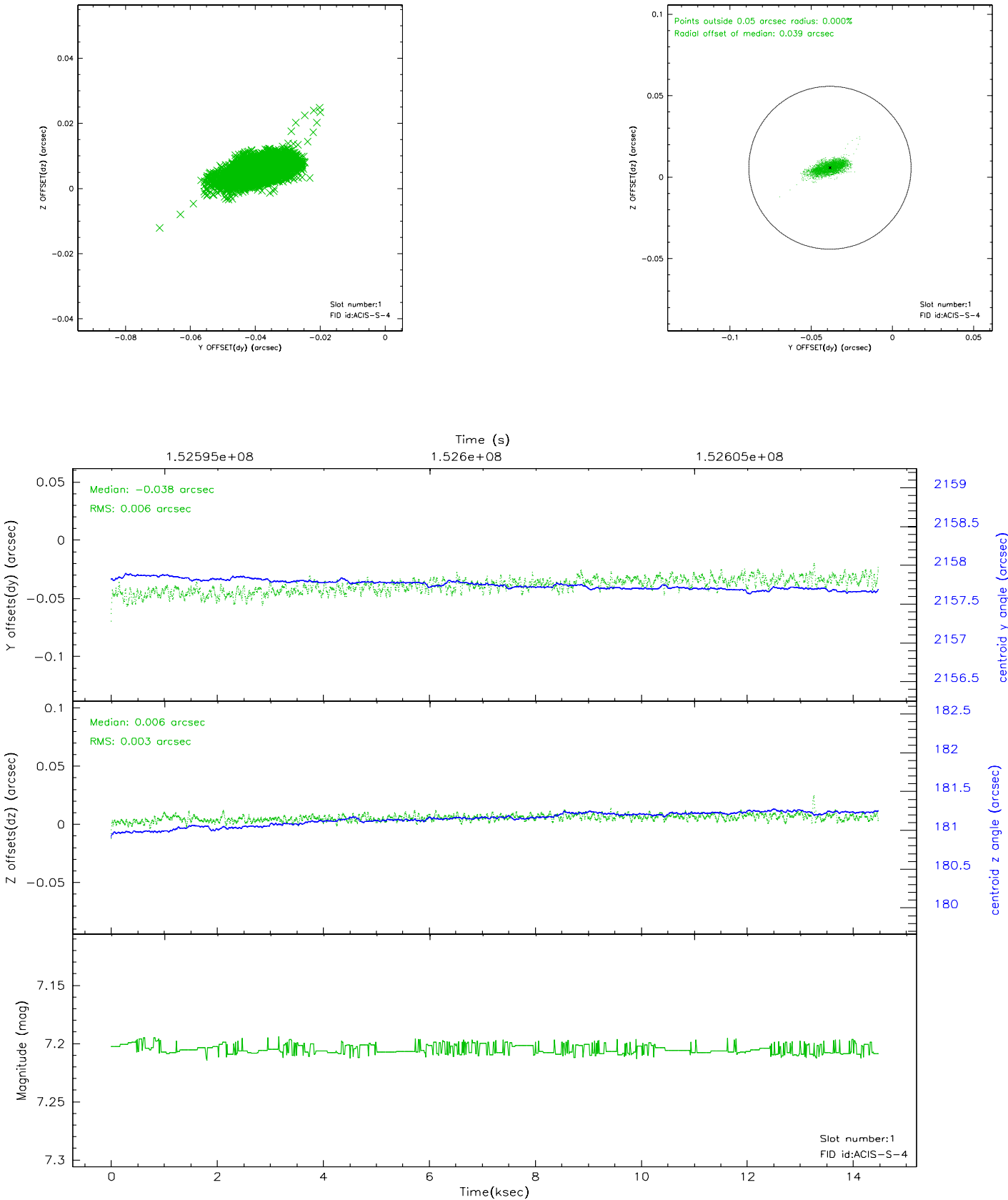


2.5 FID Slots

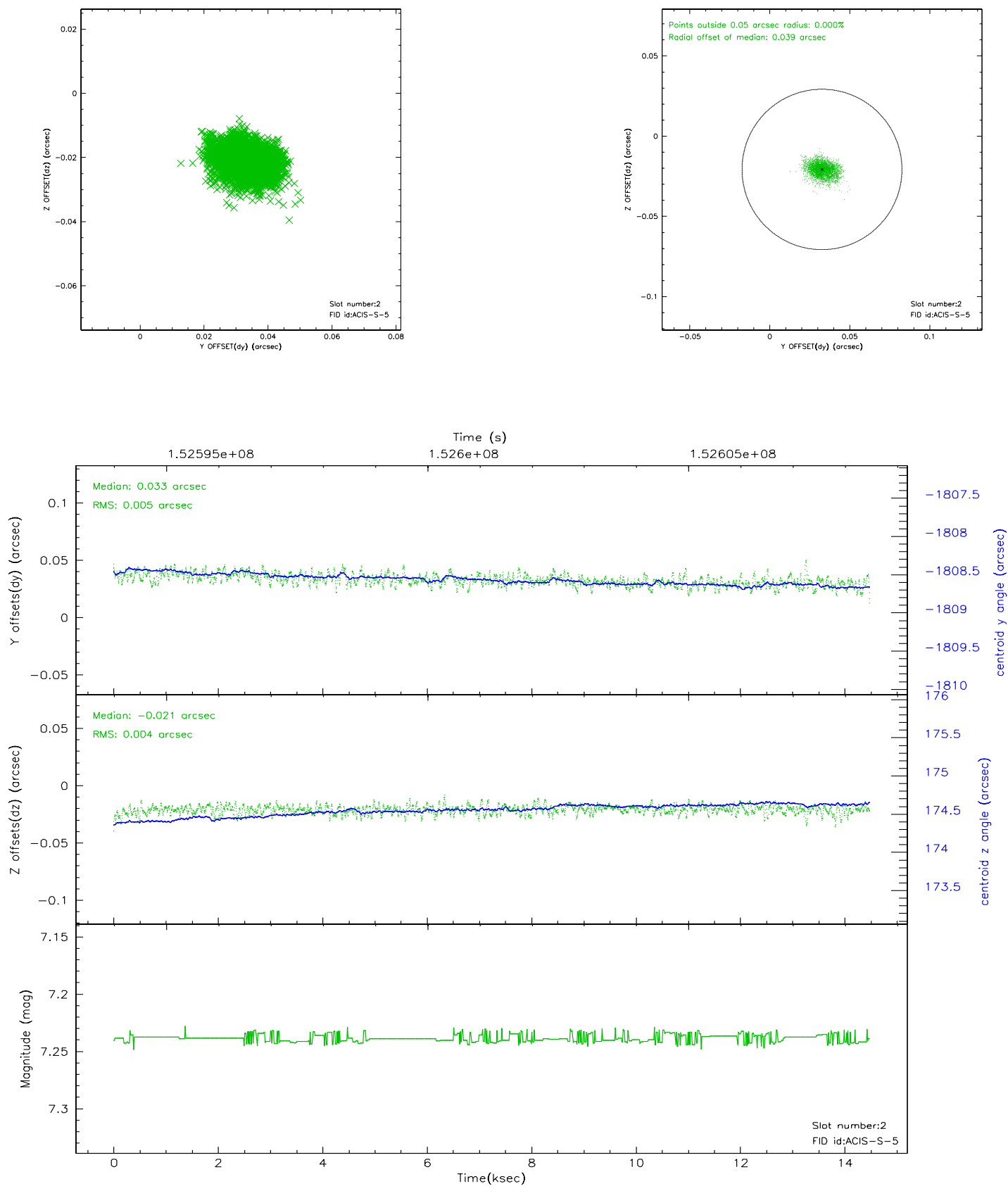
2.5.1 Slot 0



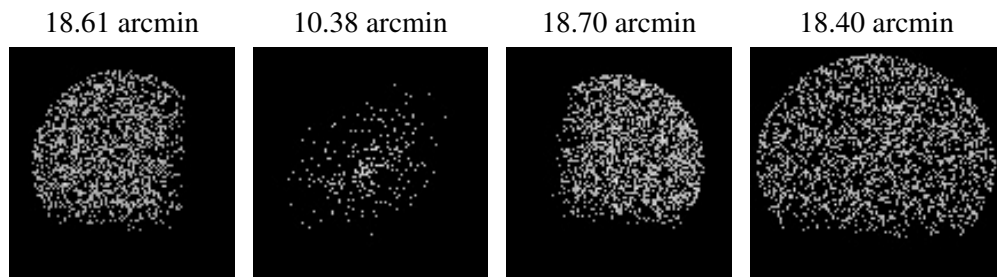
2.5.2 Slot 1



2.5.3 Slot 2



3 Point Sources



A Summary

A.1 Status

V&V Scientist	Jen Lauer
V&V Date (YYYY-MM-DD)	2006.10.12
V&V Edition	1
V&V Disposition and Status	OK
V&V Charge Time	13.86

A.2 Comments