

V&V Reference Report

L2 ASCDS Version : 8.4.5

Observation 3202 - L2 Version 4
Chandra X-Ray Center

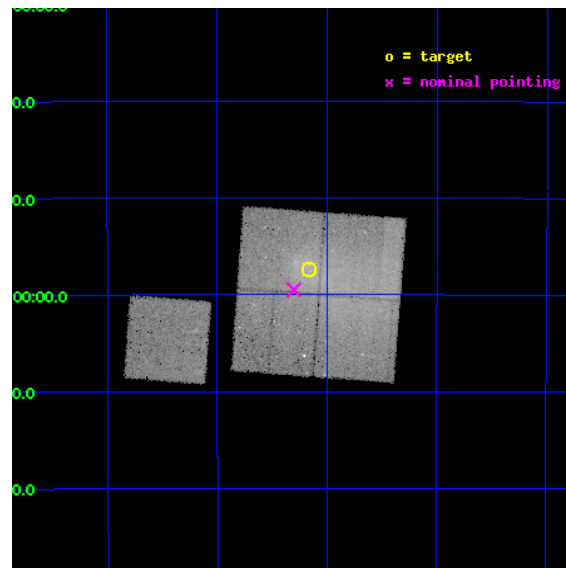
L2 Processing Date : Oct 4 2012

Contents

1	Front	2
2	OBI	3
2.1	OBI	3
2.1.1	Images	3
2.1.2	Bias	3
2.1.3	Parameters	4
2.1.4	Events	4
2.2	Compared Parameters	5
2.3	Aspect	6
2.4	Star Slots	9
2.4.1	Slot 3	9
2.4.2	Slot 4	10
2.4.3	Slot 5	11
2.4.4	Slot 6	12
2.4.5	Slot 7	13
2.5	FID Slots	14
2.5.1	Slot 0	14
2.5.2	Slot 1	15
2.5.3	Slot 2	16
A	Summary	17
A.1	Status	17
A.2	Comments	17

1 Front

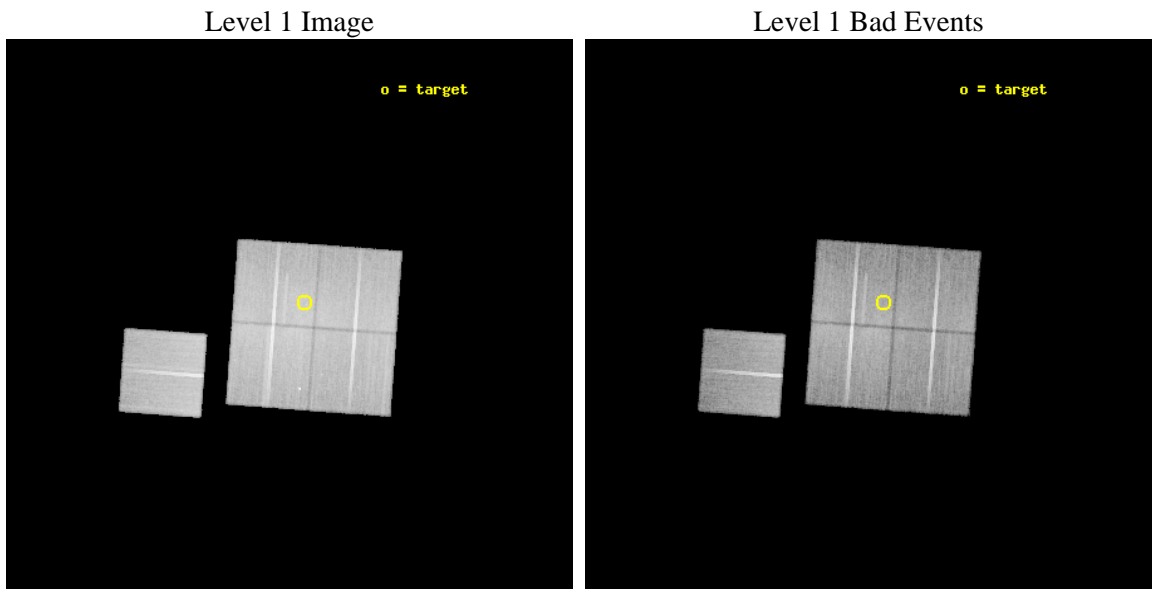
seq_num	800202	Sequence number
obs_id	3202	Observation id
title	GAS DENSITY DISCONTINUITIES IN MERGING CLUSTERS	Proposal title
observer	Dr Maxim Markevitch	Principal investigator
object	A3376	Source name
dtcycle	0	
cycle	P	events from which exps? Prim/Second/Both
ra_targ	90.54167	Observer's specified target RA [deg]
dec_targ	-39.95583	Observer's specified target Dec [deg]
ra_nom	90.575282304553	Nominal RA [deg]
dec_nom	-39.991770713858	Nominal Dec [deg]
roll_nom	274.23027530351	Nominal Roll [deg]
revision	4	Processing version of data
ontime	44853.777022988	Sum of GTIs [s]
livetime	44267.729405312	Livetime [s]
ontime0	44860.058953479	Sum of GTIs [s]
ontime1	44856.917983249	Sum of GTIs [s]
ontime2	44850.636192337	Sum of GTIs [s]
ontime3	44853.777022988	Sum of GTIs [s]
ontime6	44850.636062726	Sum of GTIs [s]
l2events	185514	Number of level 2 events



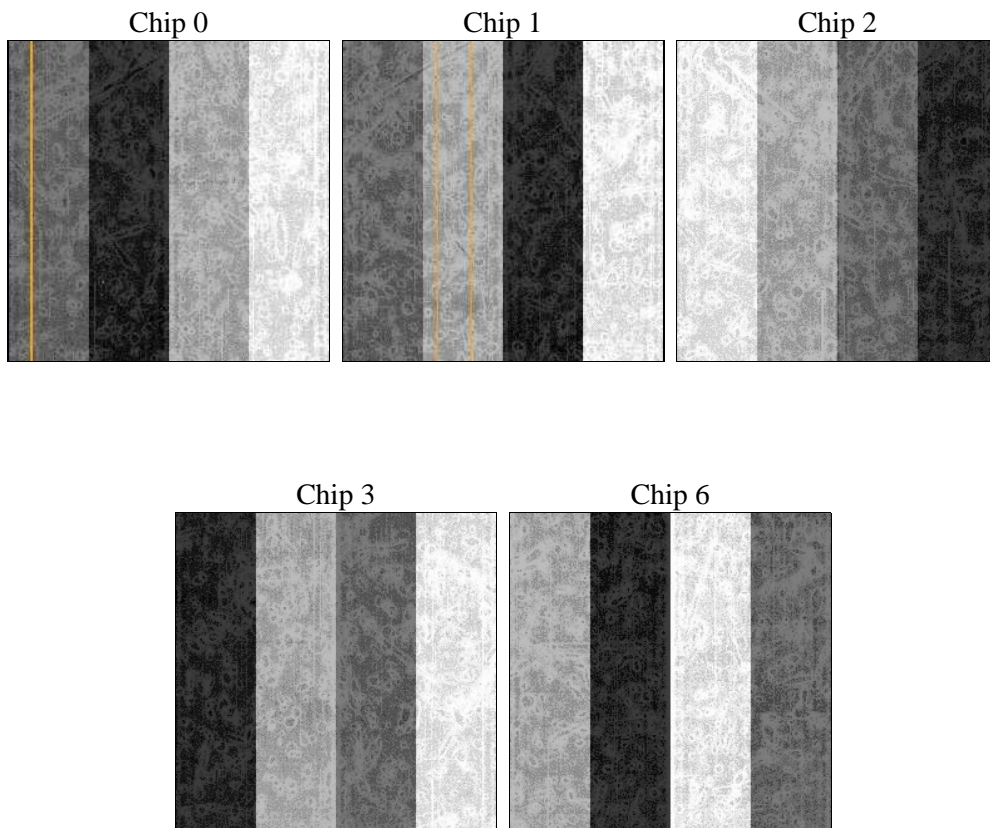
2 OBI

2.1 OBI

2.1.1 Images



2.1.2 Bias



2.1.3 Parameters

obi_num	2	Obi number	sched_exp_time	44746.224000	[s] Scheduled observation exposure time
ascdsver	8.4.5	Processing system revision	ontime	44853.777022988	Sum of GTIs [s]
caldsver	4.5.2	 	ontime0	44860.058953479	Sum of GTIs [s]
date	2012-10-04T12:06:50	Date and time of file creation	ontime1	44856.917983249	Sum of GTIs [s]
revision	4	Processing version of data	ontime2	44850.636192337	Sum of GTIs [s]
			ontime3	44853.777022988	Sum of GTIs [s]
			ontime6	44850.636062726	Sum of GTIs [s]
			l1events	1609986	Number of level 1 events

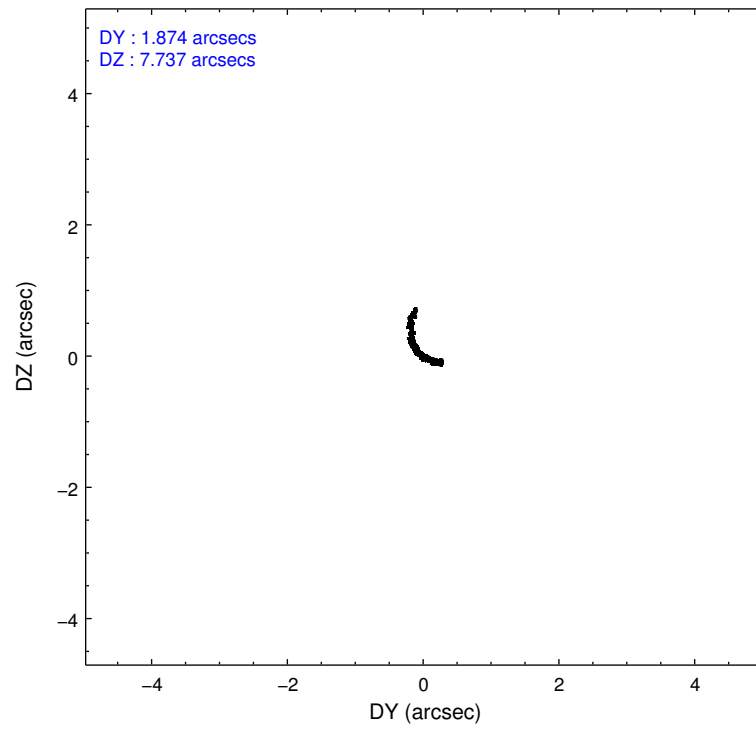
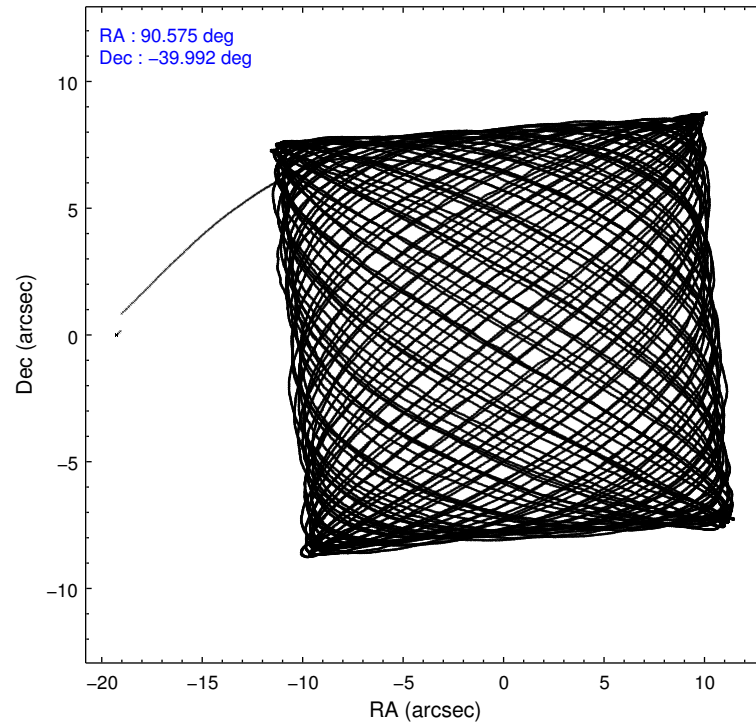
2.1.4 Events

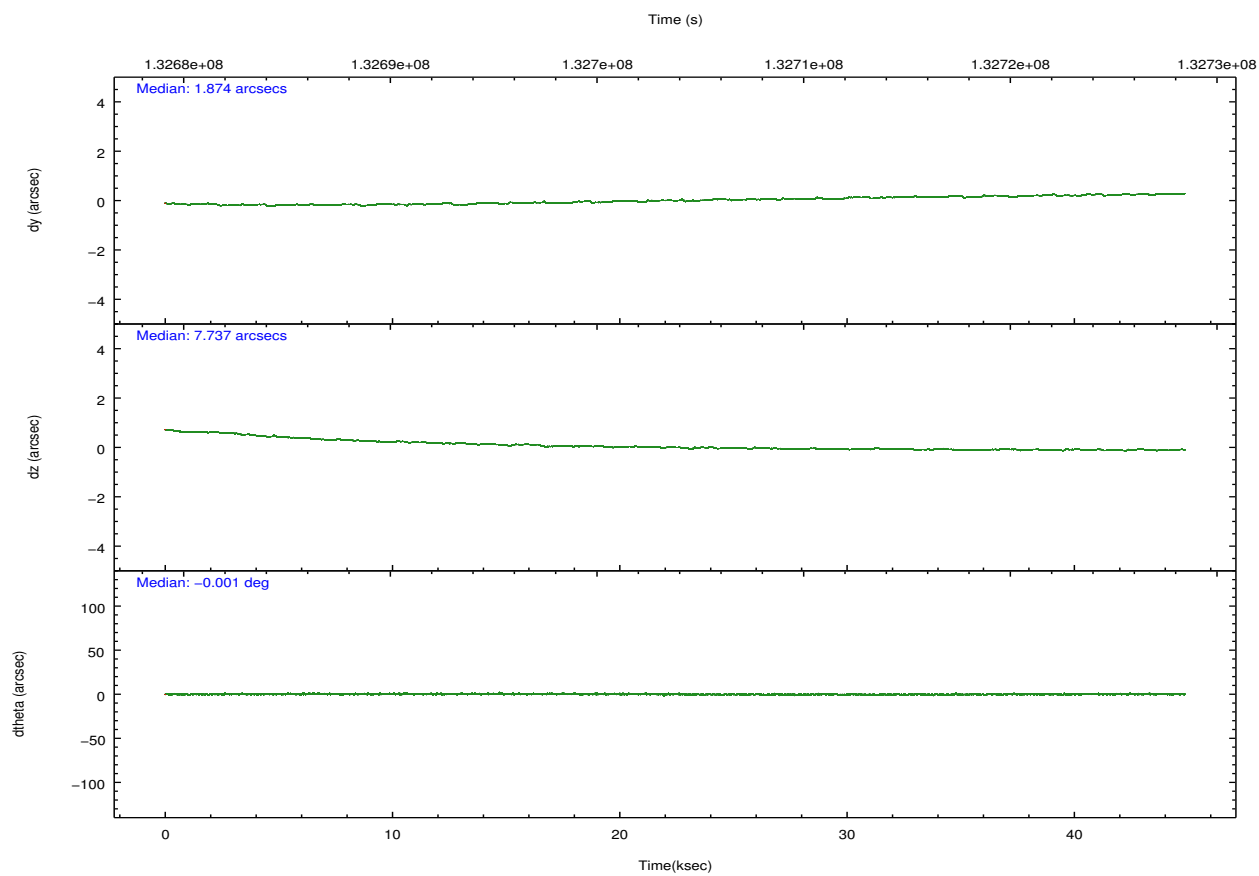
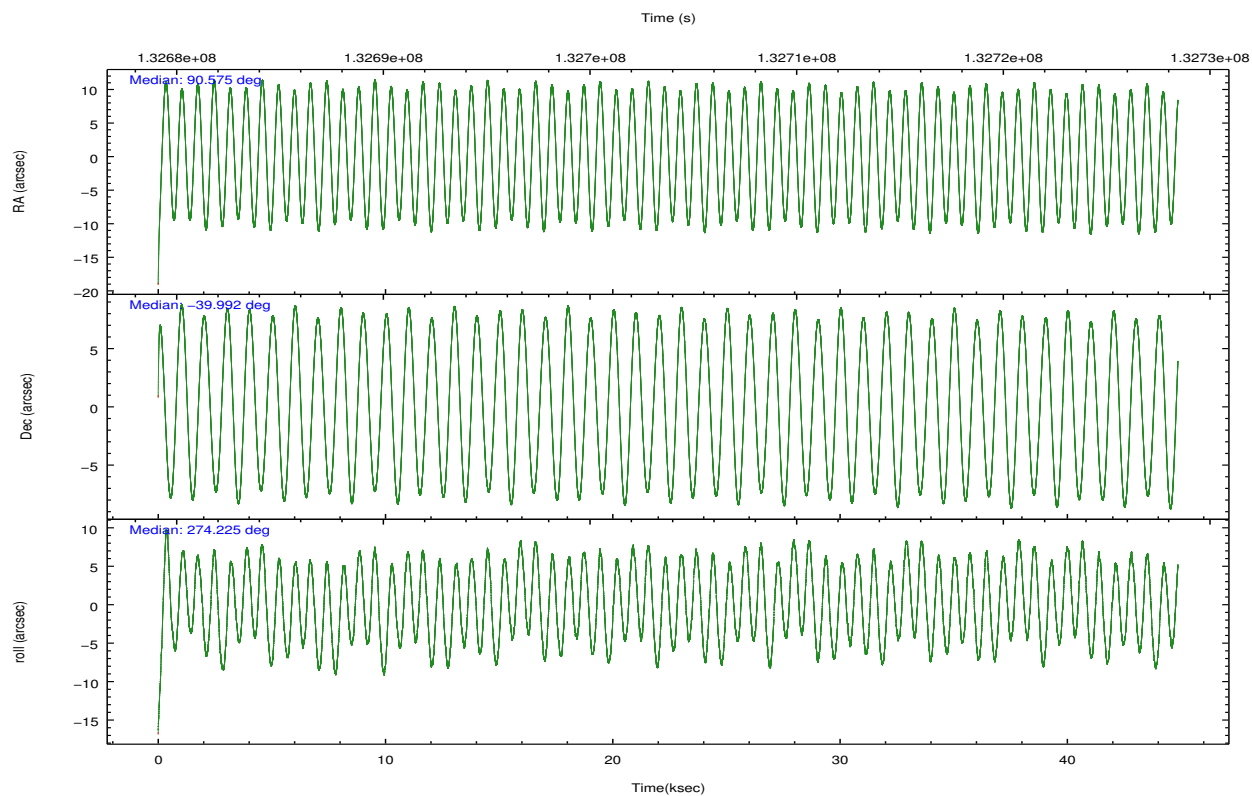
	ccd 0	ccd 1	ccd 2	ccd 3	ccd 6		ccd 0	ccd 1	ccd 2	ccd 3	ccd 6
level 1 events	298850	311052	349839	331182	319063	grade 0 events	29606	36484	23916	25123	13727
rejected events	246732	250059	303712	287227	286261		9%	11%	6%	7%	4%
rejected %	82%	80%	86%	86%	89%	grade 1 events	207	204	256	186	181
							0%	0%	0%	0%	0%
						grade 2 events	11143	10474	10761	7616	8511
							3%	3%	3%	2%	2%
						grade 3 events	3612	4251	3011	3388	3016
							1%	1%	0%	1%	0%
						grade 4 events	3413	4179	4016	3343	2934
							1%	1%	1%	1%	0%
						grade 5 events	8451	9214	8059	9047	9548
							2%	2%	2%	2%	2%
						grade 6 events	5279	6584	5365	5231	5478
							1%	2%	1%	1%	1%
						grade 7 events	237139	239662	294455	277248	275668
							79%	77%	84%	83%	86%

2.2 Compared Parameters

Parameter	Planned	Actual	Parameter	Planned	Actual
Instrument	ACIS	ACIS	Obspar format version number	7	7
Detector	ACIS-01236	ACIS-01236	Obspar file type	PREDICTED	ACTUAL
Grating	NONE	NONE	Obspar update status	NONE	UPDATED
Data mode	VFAINT	VFAINT	Number of optional ACIS chips dropped	0	0
Observation mode	POINTING	POINTING	On-chip summing requested	N	N
[deg] Pointing RA	90.555093	90.57528230455328	Subarray requested	NONE	NONE
[deg] Pointing Dec	-39.969151	-39.99177071385835	Alternating exposures requested	N	N
[deg] Pointing Roll	274.008621	274.2302753035092	[s] Primary exposure time	0.000000	3.1
[mm] SIM focus pos	-0.782348	-0.7809083437167272			
[mm] SIM defocus	0	0.001439871863259334			
[mm] SIM translation stage pos	-227.592463	-227.5958210972112			
[mm] SIM translation stage offset	-6	-5.996631905718488			
[s] Observation start time (MET)	132681464.184000	132679937.18449			
Observation start date	2002-03-16T15:56:40	2002-03-16T15:32:17			
[s] Observation end time (MET)	132726210.184000	132726524.46138			
Observation end date	2002-03-17T04:22:26	2002-03-17T04:28:44			
Read mode	TIMED	TIMED			

2.3 Aspect



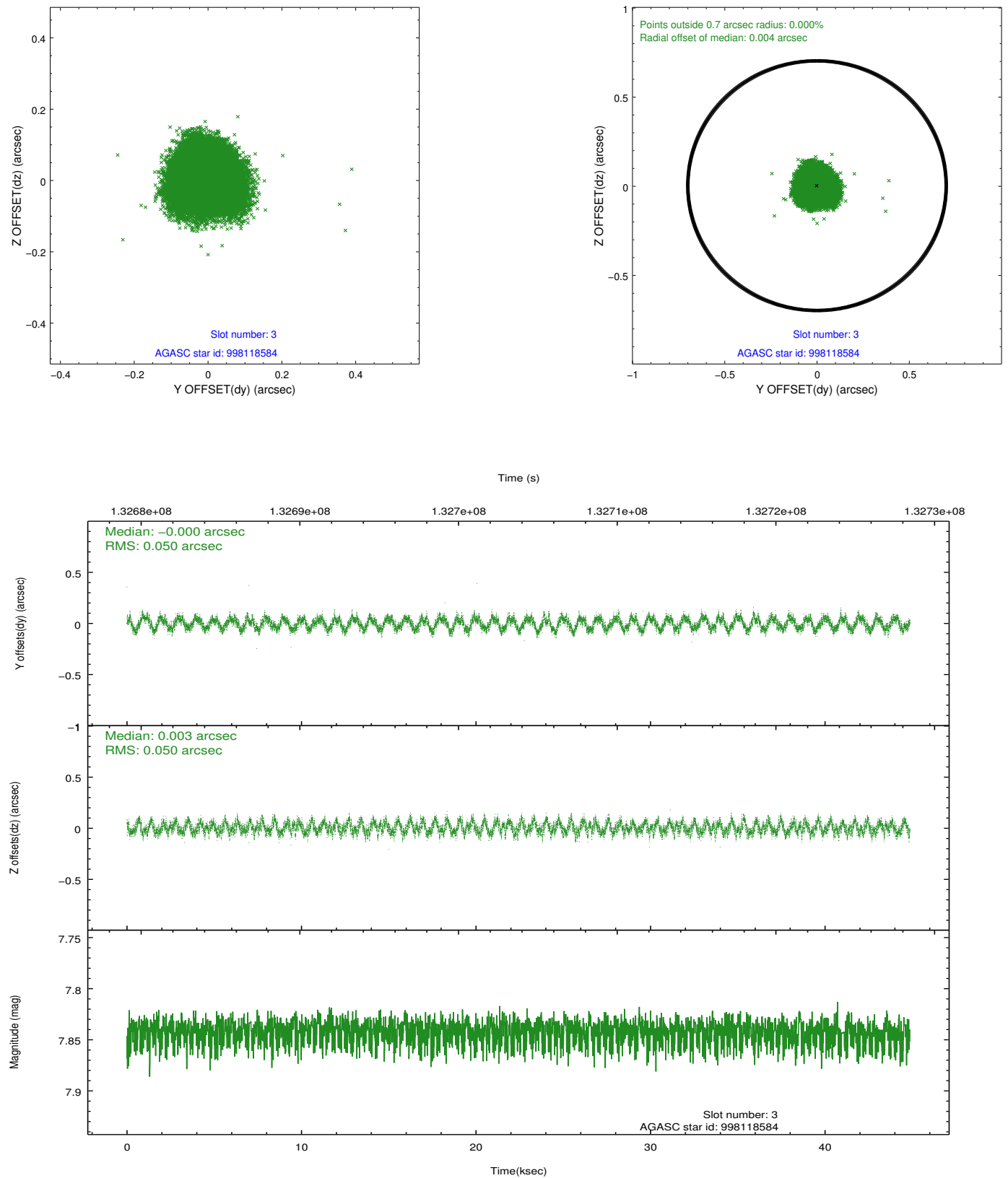


Slot Statistics

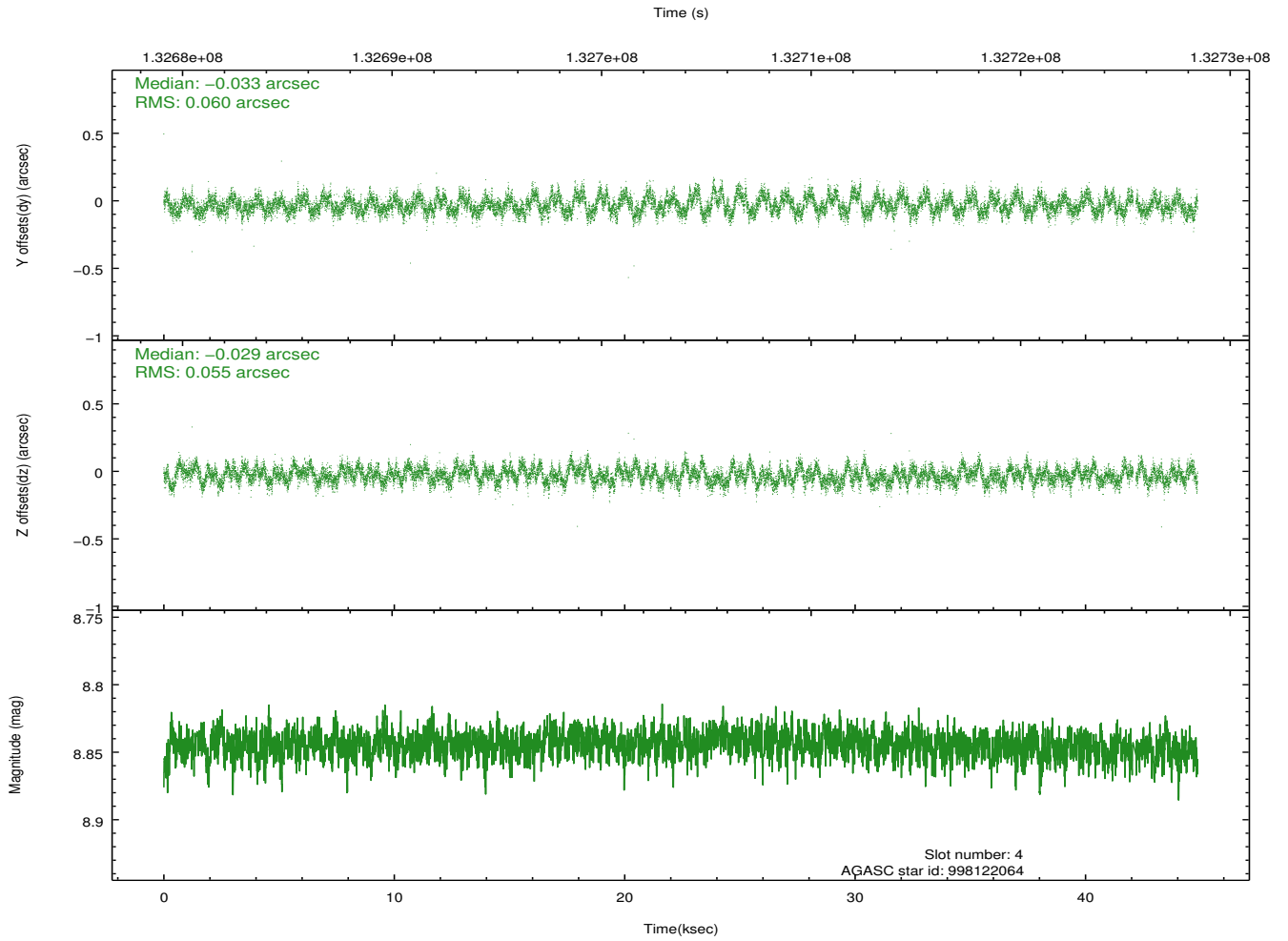
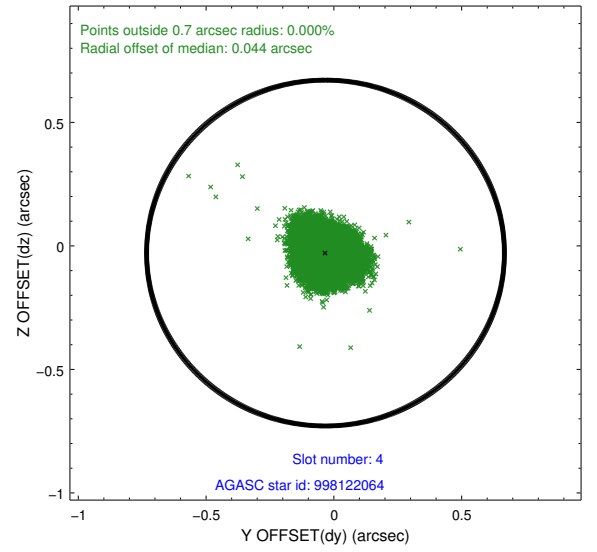
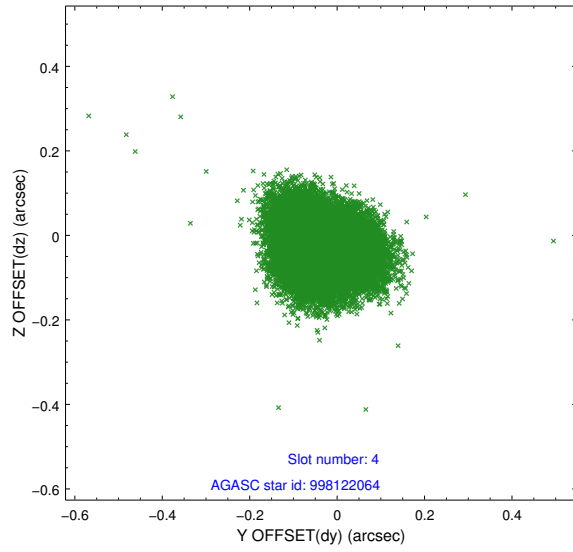
slot	status	id	mag	n_pts	med_dy	med_dz	dr1	dr2	ra	dec	mean_y	mean_z
0	FID	ACIS-I-1	7.24	10942	0.062	-0.035	0.011	0.018	0.000000	0.000000	937.86	-954.38
1	FID	ACIS-I-5	7.24	10941	-0.124	0.089	0.006	0.011	0.000000	0.000000	-1810.38	943.29
2	FID	ACIS-I-6	7.26	10941	-0.029	0.016	0.012	0.018	0.000000	0.000000	403.38	1587.67
3	GUIDE	998118584	7.84	21884	-0.000	0.003	0.077	0.112	91.028900	-39.836263	-381.96	1339.82
4	GUIDE	998122064	8.84	21813	-0.033	-0.029	0.087	0.136	90.154340	-40.368326	1359.61	-1196.86
5	GUIDE	998119120	9.12	21874	0.082	0.048	0.206	0.282	90.414762	-40.136836	576.01	-427.33
6	GUIDE	998115240	9.78	21859	-0.018	-0.008	0.097	0.156	90.090736	-39.523214	-1687.79	-1174.44
7	GUIDE	997593480	9.31	21875	-0.025	-0.007	0.090	0.143	90.607549	-39.310496	-2354.86	311.34

2.4 Star Slots

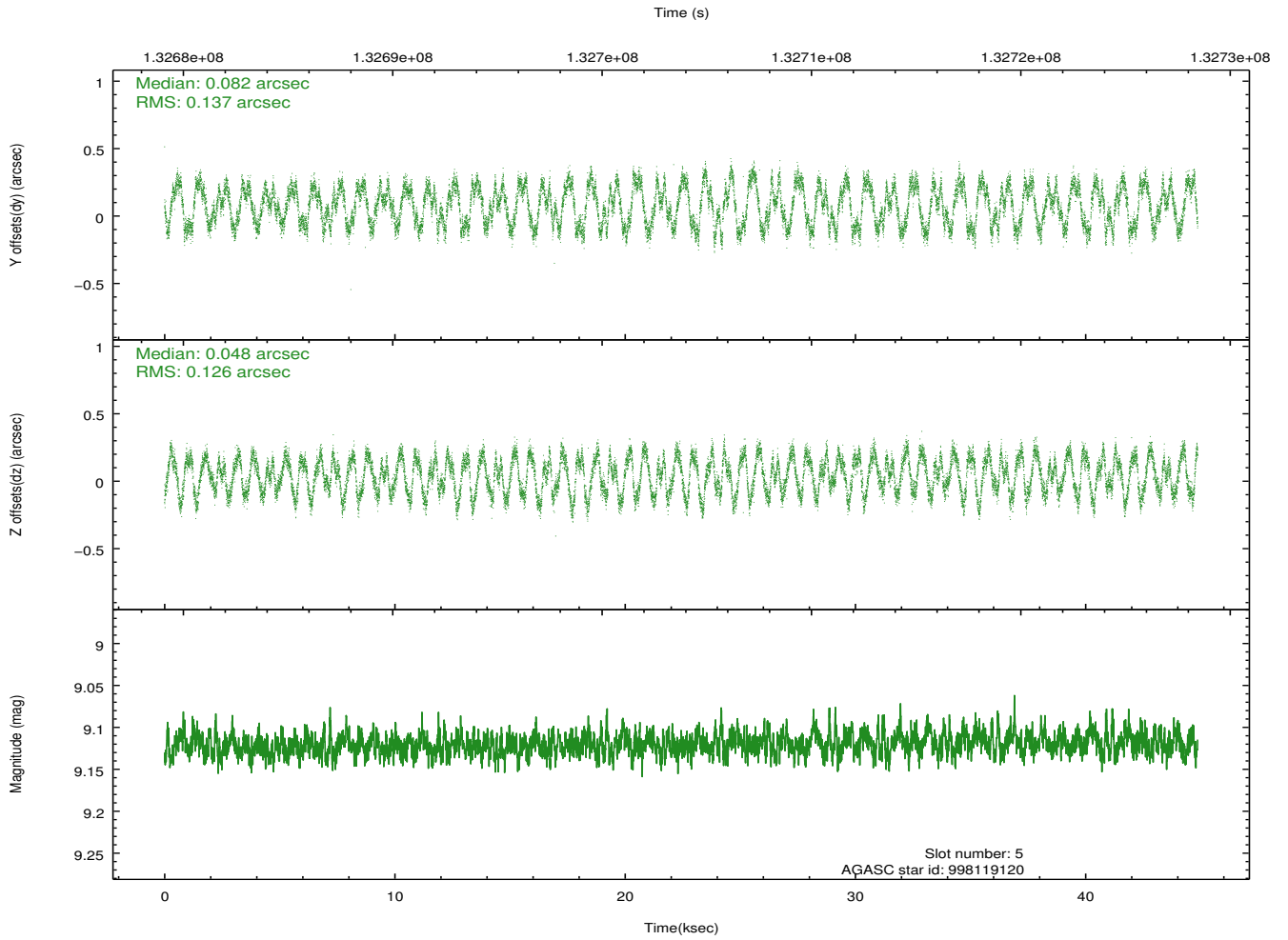
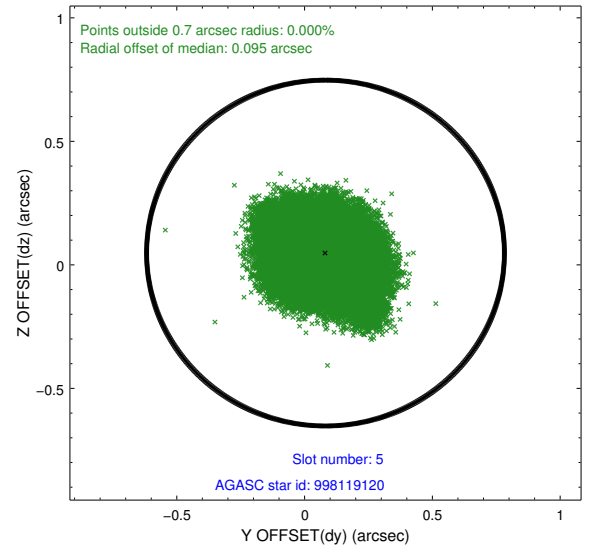
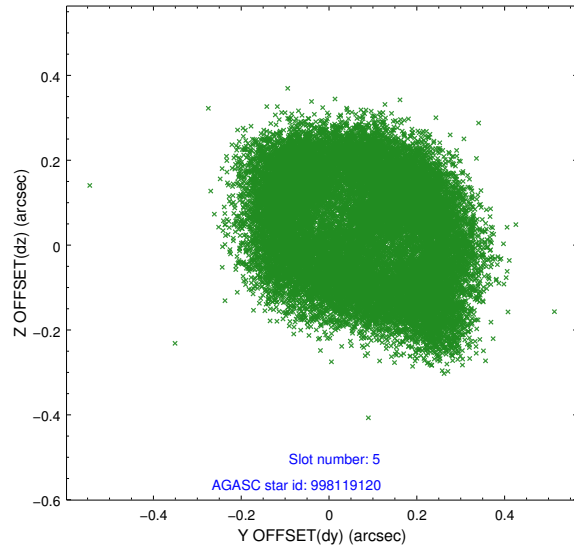
2.4.1 Slot 3



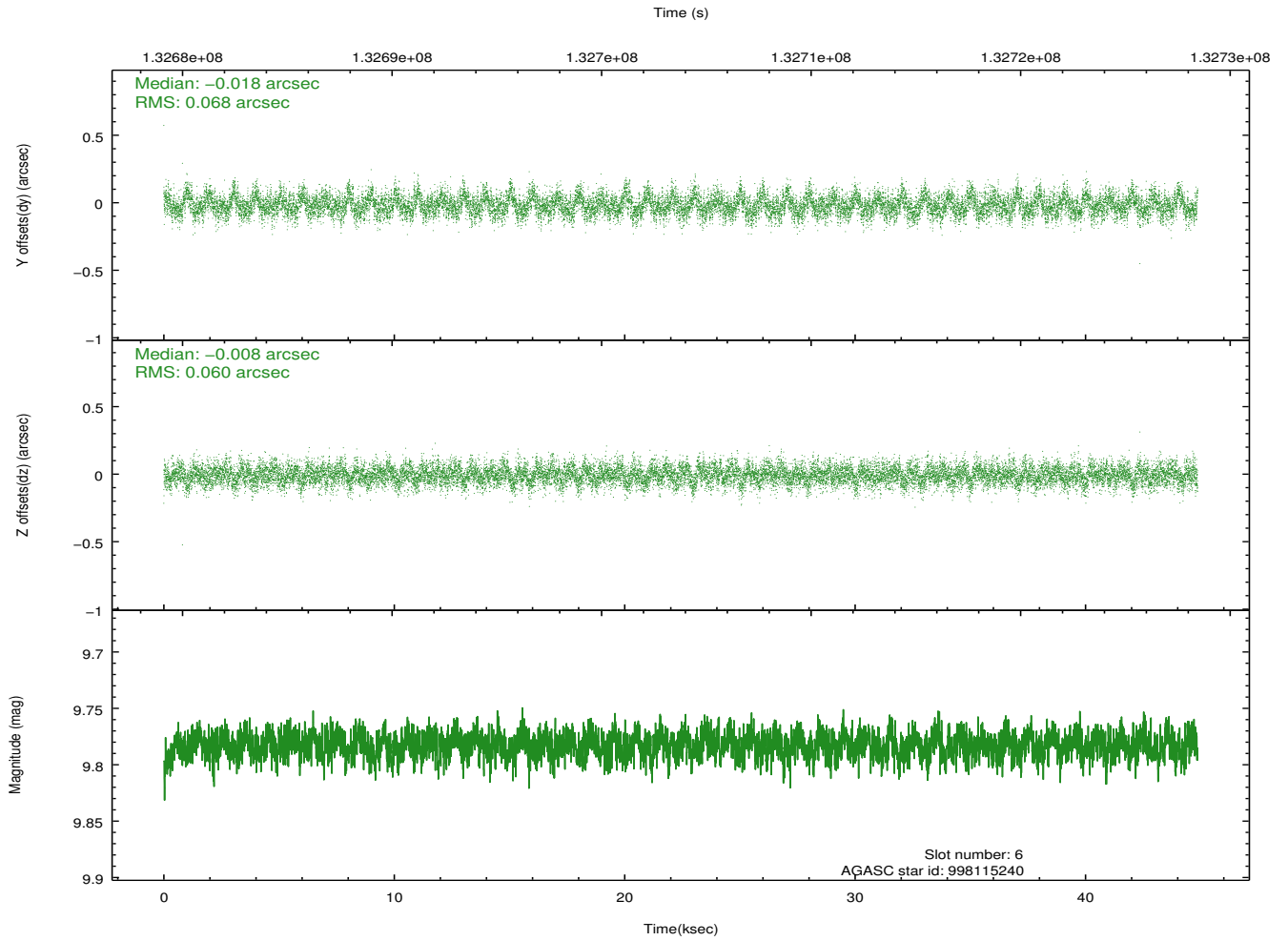
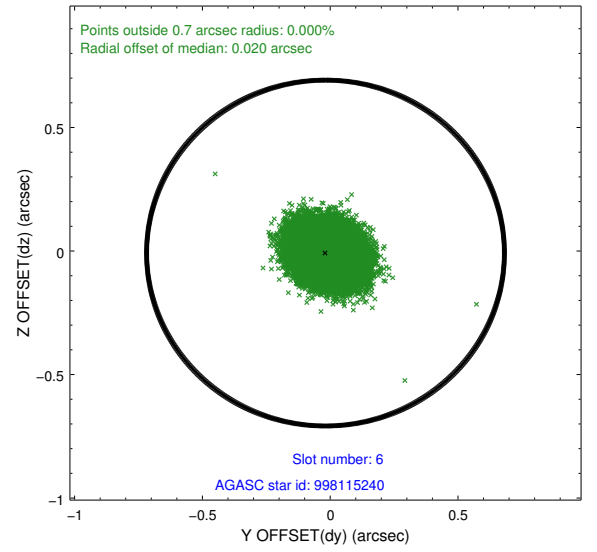
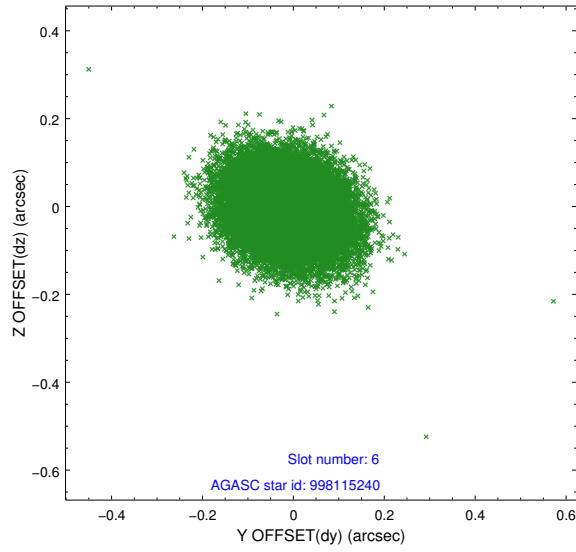
2.4.2 Slot 4



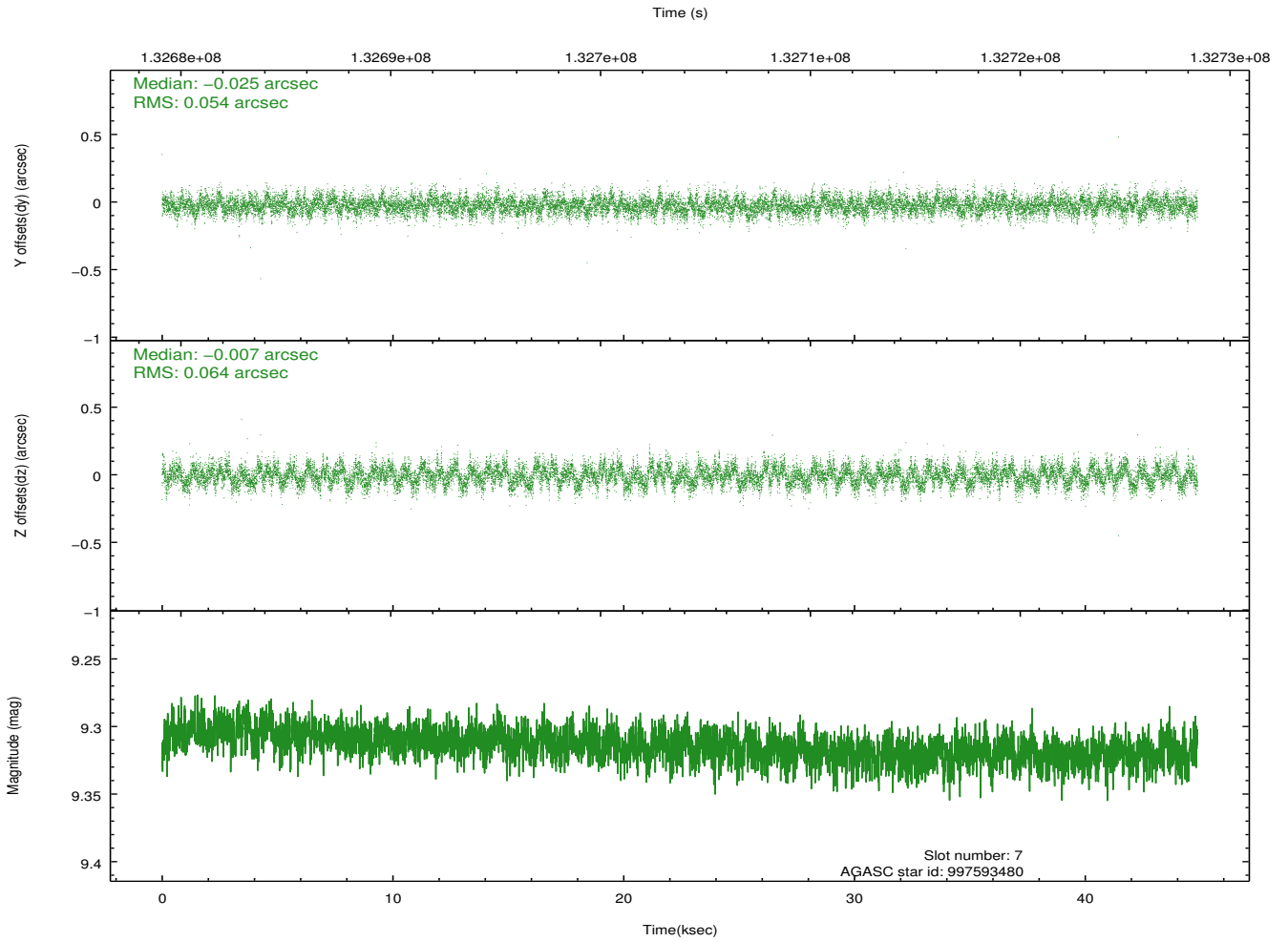
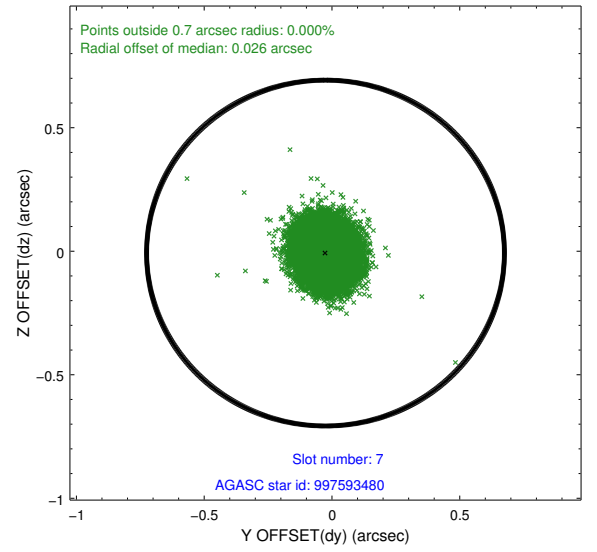
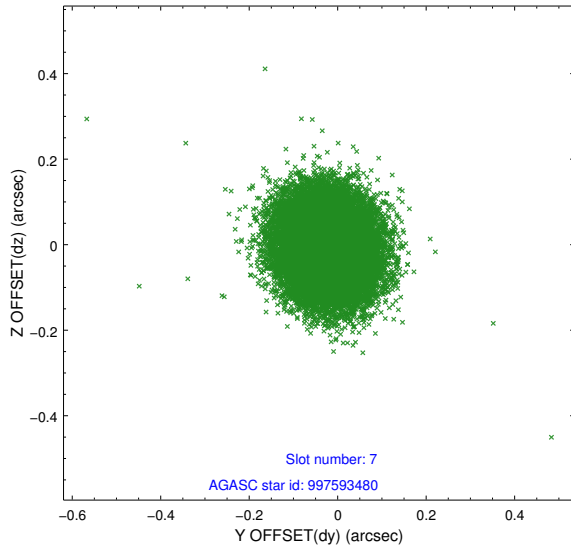
2.4.3 Slot 5



2.4.4 Slot 6

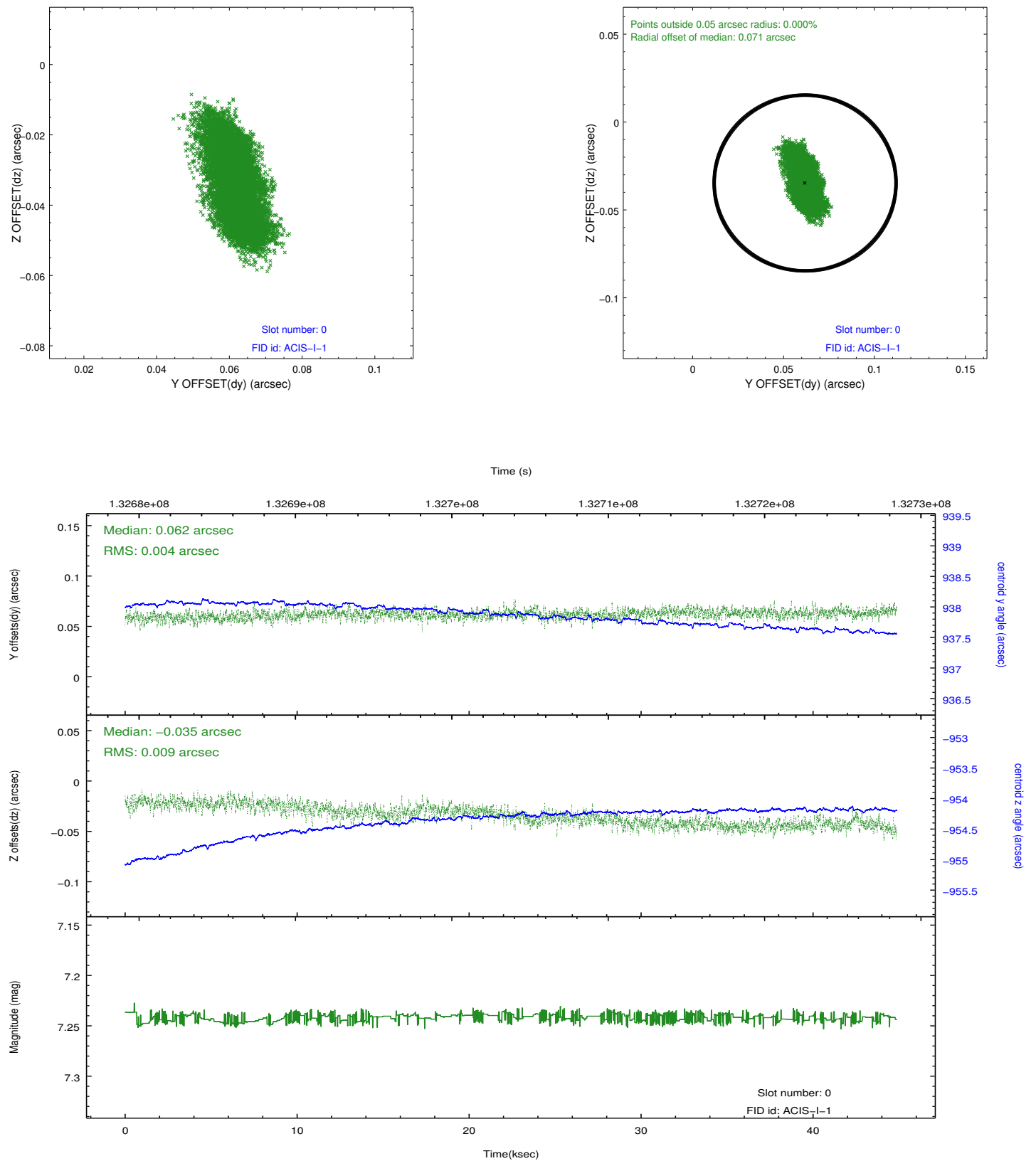


2.4.5 Slot 7

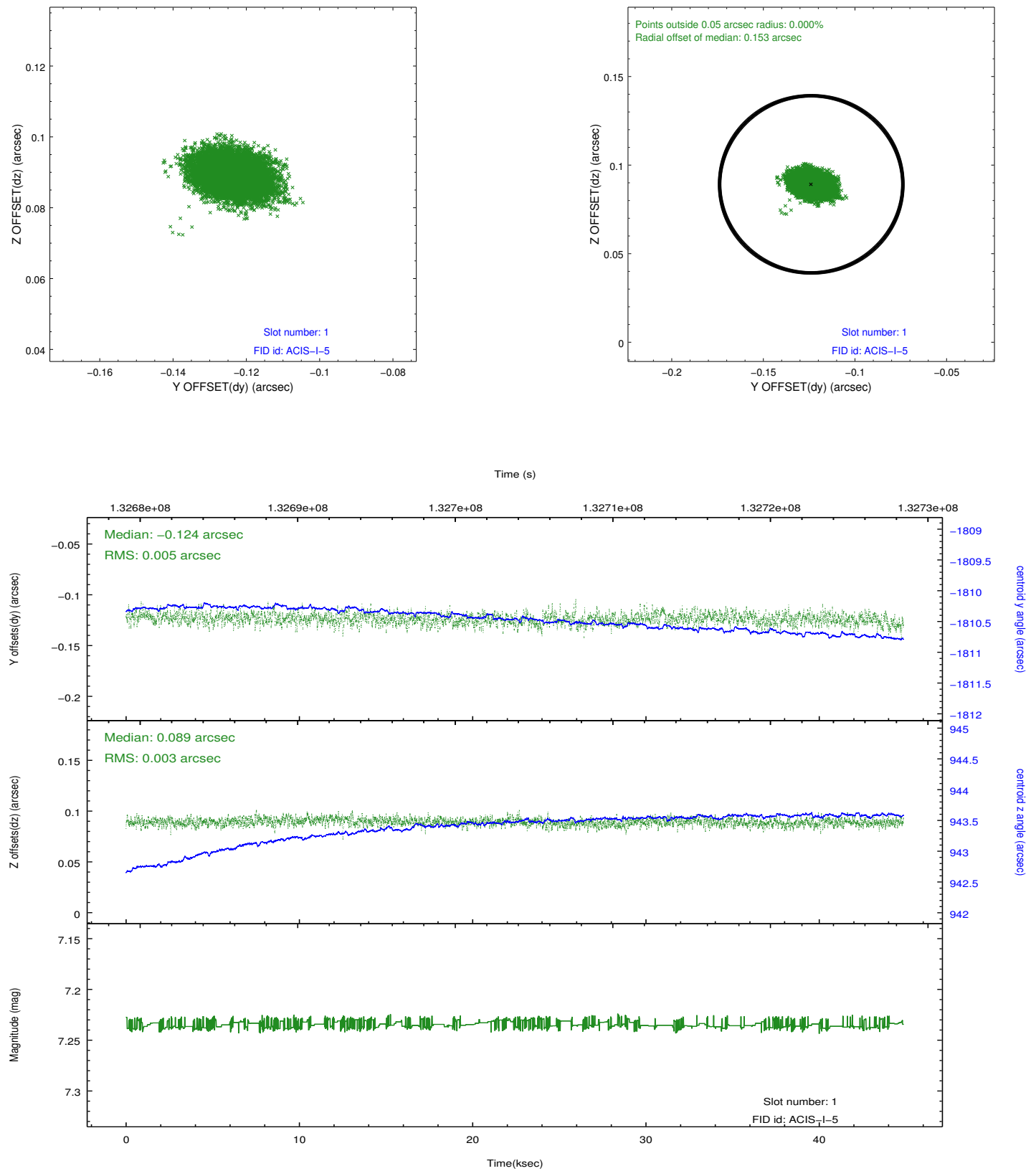


2.5 FID Slots

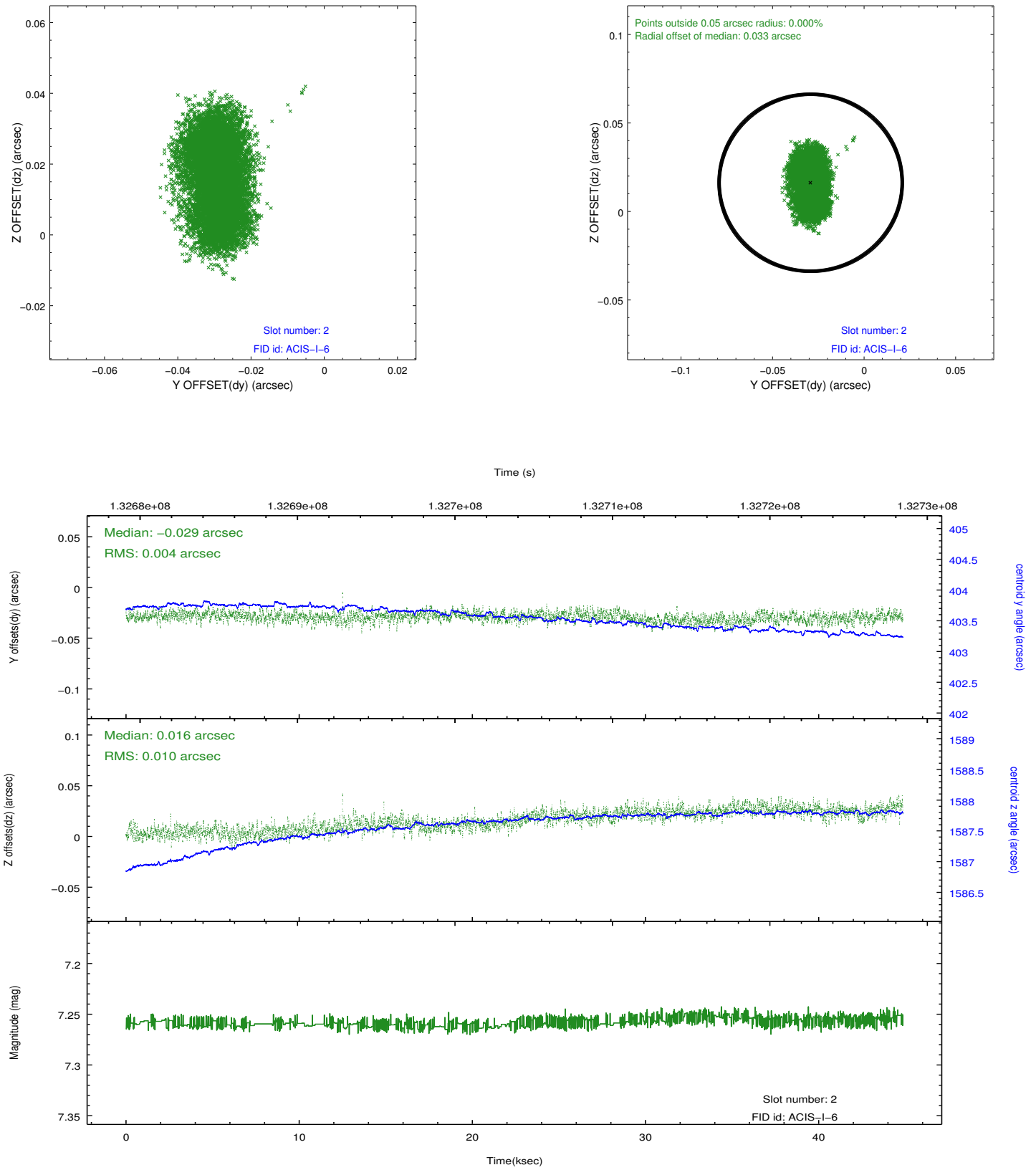
2.5.1 Slot 0



2.5.2 Slot 1



2.5.3 Slot 2



A Summary

A.1 Status

V&V Scientist	Beth Sundheim
V&V Date (YYYY-MM-DD)	2012.10.09
V&V Edition	1
V&V Disposition and Status	OK
V&V Charge Time	44.853

A.2 Comments