

V&V Reference Report

L2 ASCDS Version : 8.4.5

Observation 3199 - L2 Version 3
Chandra X-Ray Center

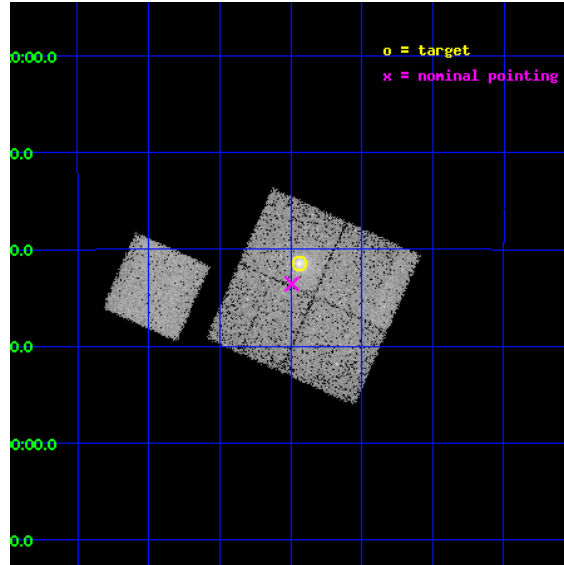
L2 Processing Date : Oct 19 2012

Contents

1	Front	2
2	OBI	3
2.1	OBI	3
2.1.1	Images	3
2.1.2	Bias	3
2.1.3	Parameters	4
2.1.4	Events	4
2.2	Compared Parameters	5
2.3	Aspect	6
2.4	Star Slots	9
2.4.1	Slot 3	9
2.4.2	Slot 4	10
2.4.3	Slot 5	11
2.4.4	Slot 6	12
2.4.5	Slot 7	13
2.5	FID Slots	14
2.5.1	Slot 0	14
2.5.2	Slot 1	15
2.5.3	Slot 2	16
A	Summary	17
A.1	Status	17
A.2	Comments	17

1 Front

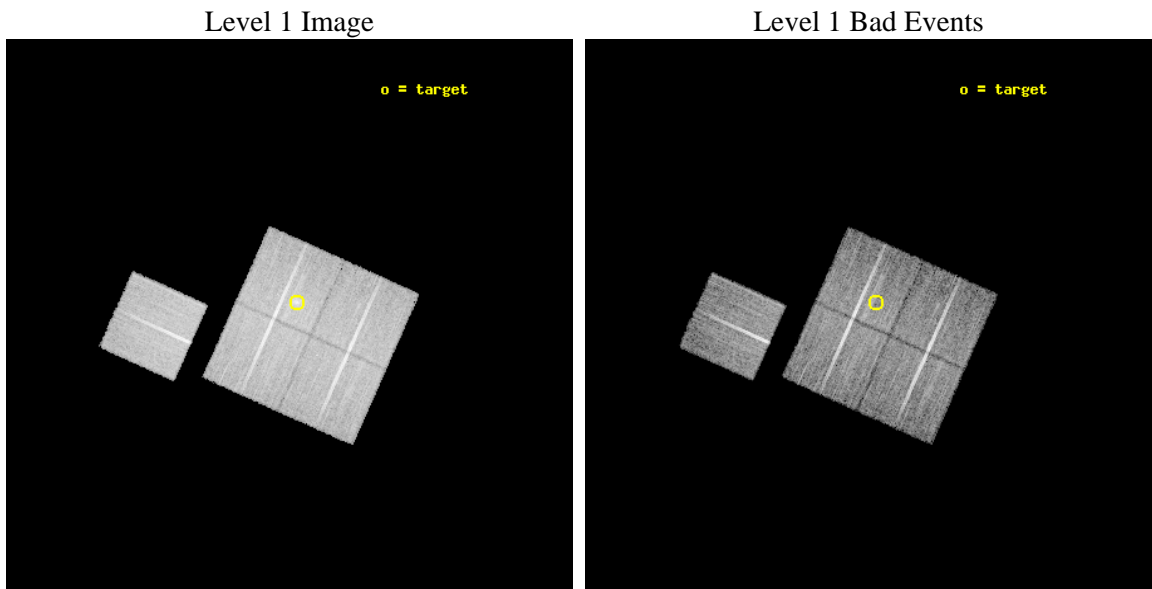
seq_num	800199	Sequence number
obs_id	3199	Observation id
title	OBSERVATION OF MACS CLUSTERS, Z>0.5	Proposal title
observer	DR. LEON VANSPEYBROECK	Principal investigator
object	MACS-J2129.4-0741	Source name
dtcycle	0	
cycle	P	events from which exps? Prim/Second/Both
ra_targ	322.359167	Observer's specified target RA [deg]
dec_targ	-7.690833	Observer's specified target Dec [deg]
ra_nom	322.37292471586	Nominal RA [deg]
dec_nom	-7.7259478537591	Nominal Dec [deg]
roll_nom	294.15836367752	Nominal Roll [deg]
revision	3	Processing version of data
ontime	20118.959001064	Sum of GTIs [s]
liveltime	19856.089990353	Livetime [s]
ontime0	20115.714009374	Sum of GTIs [s]
ontime1	20115.755099207	Sum of GTIs [s]
ontime2	20122.078039765	Sum of GTIs [s]
ontime3	20118.959001064	Sum of GTIs [s]
ontime6	20121.954919755	Sum of GTIs [s]
l2events	64492	Number of level 2 events



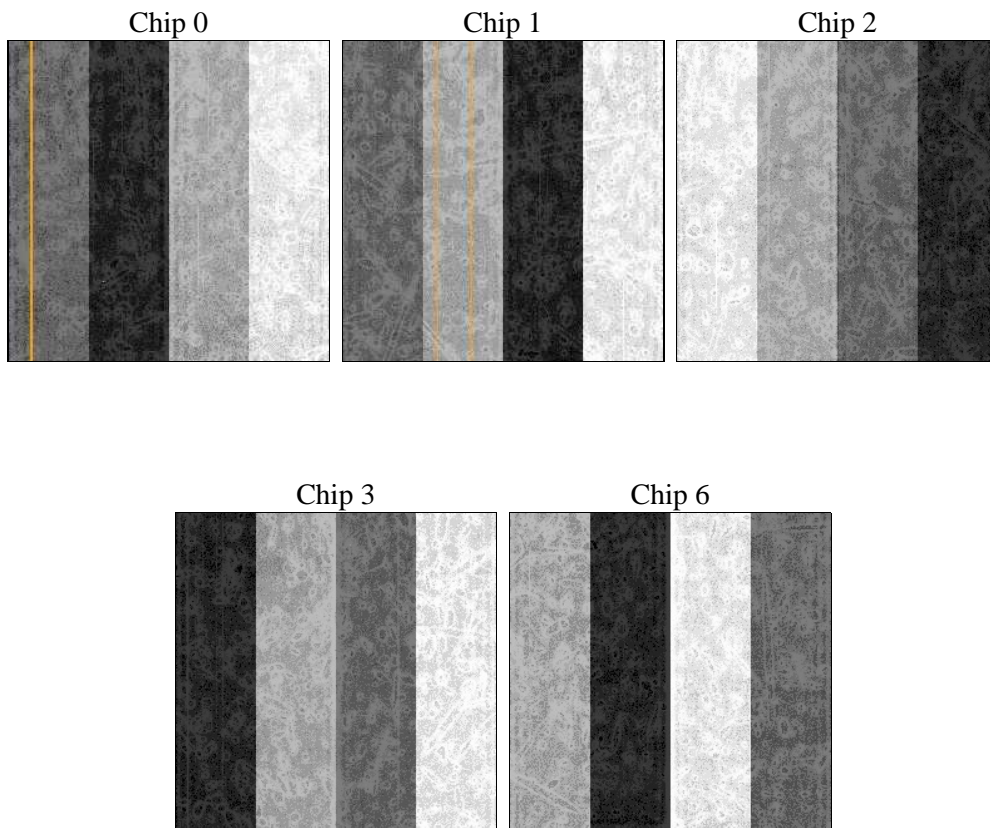
2 OBI

2.1 OBI

2.1.1 Images



2.1.2 Bias



2.1.3 Parameters

obi_num	1	Obi number	sched_exp_time	20000.000000	[s] Scheduled observation exposure time
ascdsver	8.4.5	Processing system revision	ontime	20118.959001064	Sum of GTIs [s]
caldsver	4.5.2	 	ontime0	20115.714009374	Sum of GTIs [s]
date	2012-10-19T06:45:47	Date and time of file creation	ontime1	20115.755099207	Sum of GTIs [s]
revision	3	Processing version of data	ontime2	20122.078039765	Sum of GTIs [s]
			ontime3	20118.959001064	Sum of GTIs [s]
			ontime6	20121.954919755	Sum of GTIs [s]
			l1events	511600	Number of level 1 events

2.1.4 Events

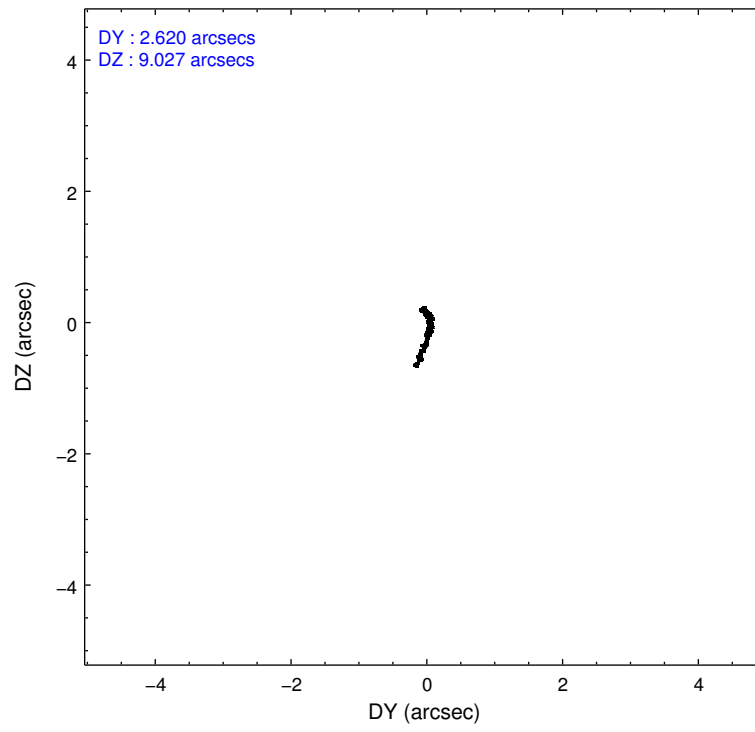
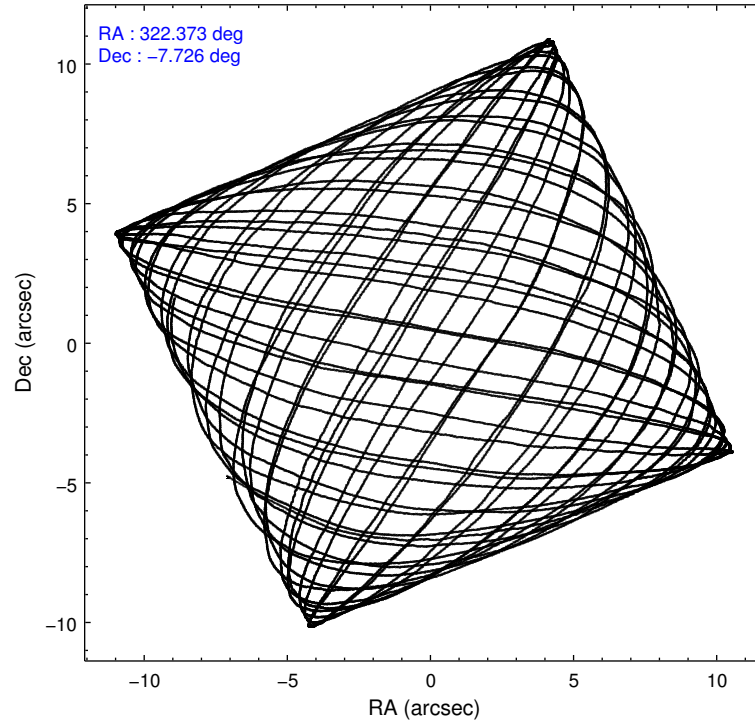
	ccd 0	ccd 1	ccd 2	ccd 3	ccd 6
level 1 events	95606	94798	105075	105998	110123
rejected events	82754	79990	92392	89888	92204
rejected %	86%	84%	87%	84%	83%

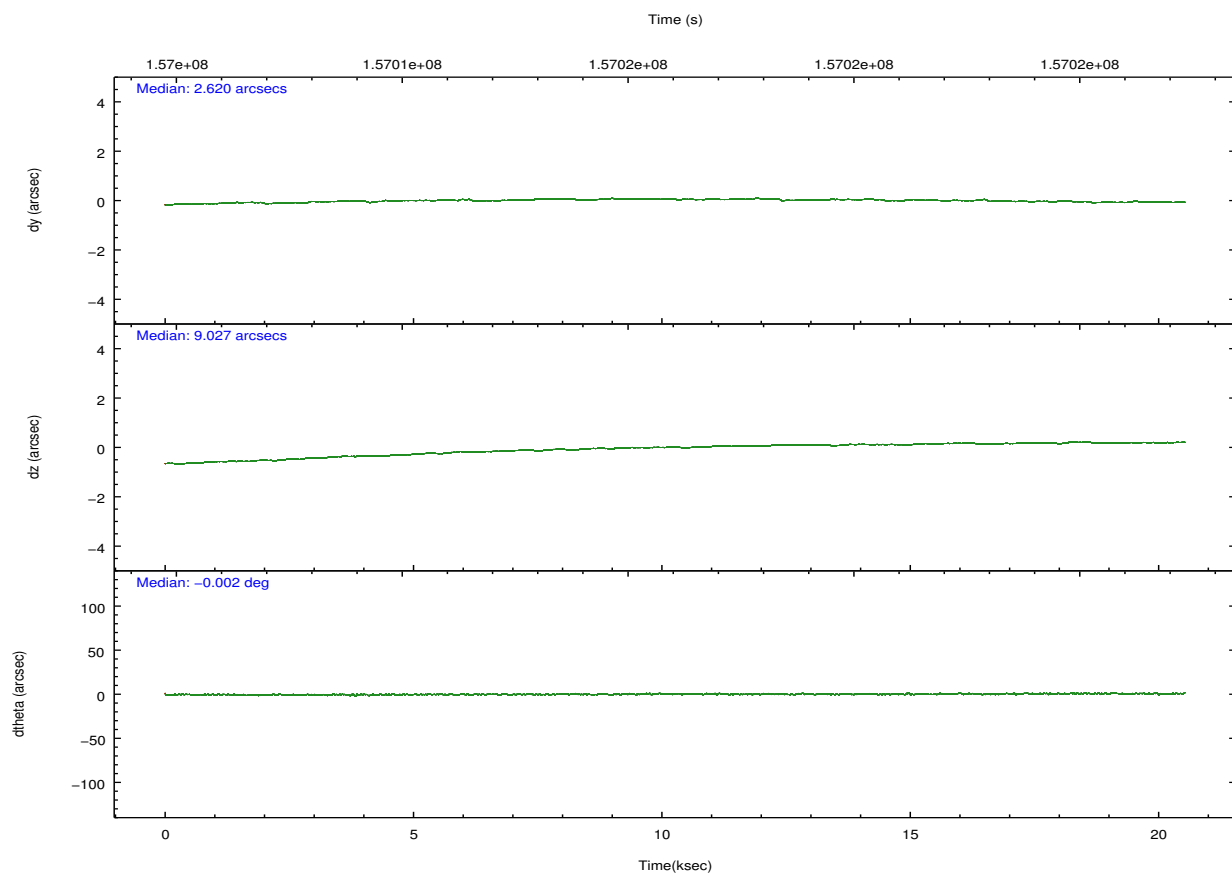
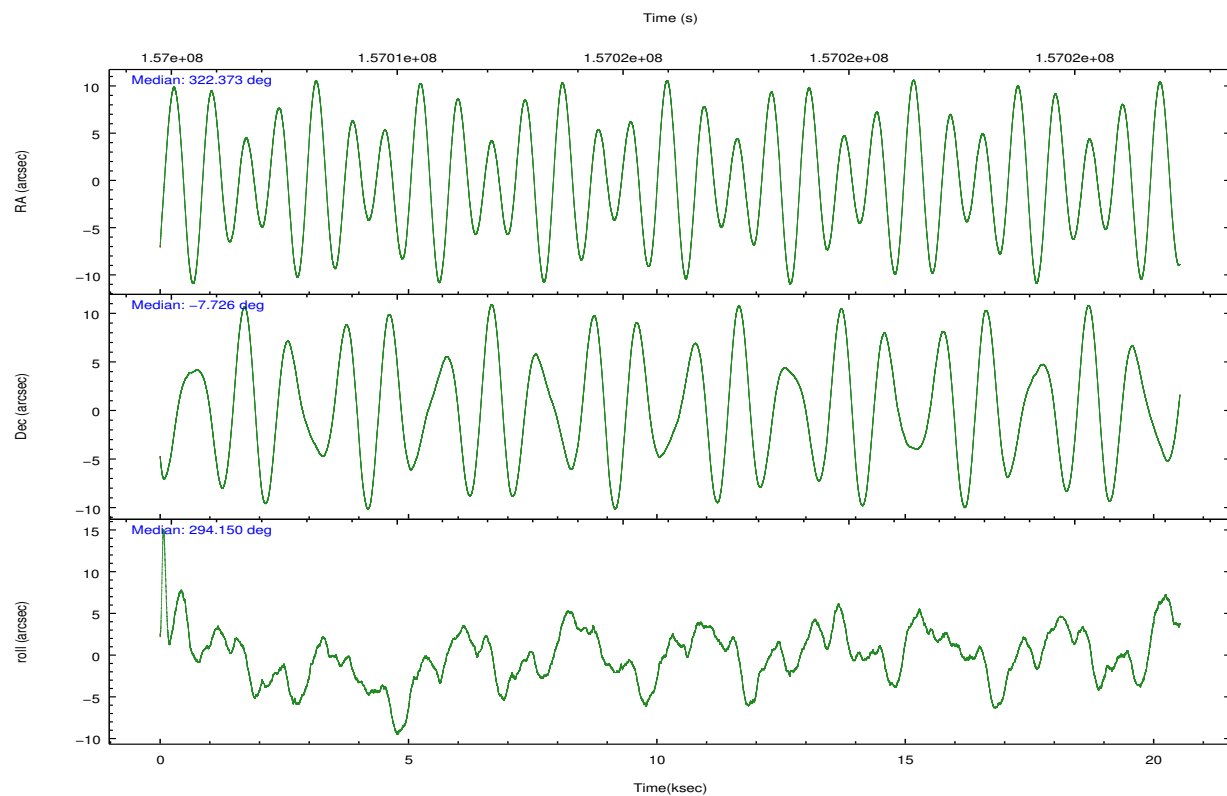
	ccd 0	ccd 1	ccd 2	ccd 3	ccd 6
grade 0 events	6191	7190	6202	9253	10542
	6%	7%	5%	8%	9%
grade 1 events	41	71	48	73	58
	0%	0%	0%	0%	0%
grade 2 events	2468	2788	2431	2432	2708
	2%	2%	2%	2%	2%
grade 3 events	1235	1298	1088	1254	1276
	1%	1%	1%	1%	1%
grade 4 events	1160	1282	1138	1257	1248
	1%	1%	1%	1%	1%
grade 5 events	3368	3555	3192	3671	3770
	3%	3%	3%	3%	3%
grade 6 events	1805	2255	1830	1918	2147
	1%	2%	1%	1%	1%
grade 7 events	79338	76359	89146	86140	88374
	82%	80%	84%	81%	80%

2.2 Compared Parameters

Parameter	Planned	Actual	Parameter	Planned	Actual
Instrument	ACIS	ACIS	Obspar format version number	7	7
Detector	ACIS-01236	ACIS-01236	Obspar file type	PREDICTED	ACTUAL
Grating	NONE	NONE	Obspar update status	NONE	UPDATED
Data mode	VFAINT	VFAINT	Number of optional ACIS chips dropped	0	0
Observation mode	POINTING	POINTING	On-chip summing requested	N	N
[deg] Pointing RA	322.350453	322.3729247158598	Subarray requested	NONE	NONE
[deg] Pointing Dec	-7.709992	-7.725947853759128	Alternating exposures requested	N	N
[deg] Pointing Roll	293.946663	294.1583636775156	[s] Primary exposure time	0.000000	3.1
[mm] SIM focus pos	-0.782348	-0.7809083437167272			
[mm] SIM defocus	0	0.001439871863259334			
[mm] SIM translation stage pos	-227.742463	-227.734108438797			
[mm] SIM translation stage offset	-5.85	-5.858344564132665			
[s] Observation start time (MET)	157006305.184000	157005171.56048			
Observation start date	2002-12-23T04:50:41	2002-12-23T04:32:51			
[s] Observation end time (MET)	157026305.184000	157026740.63638			
Observation end date	2002-12-23T10:24:01	2002-12-23T10:32:20			
Read mode	TIMED	TIMED			

2.3 Aspect



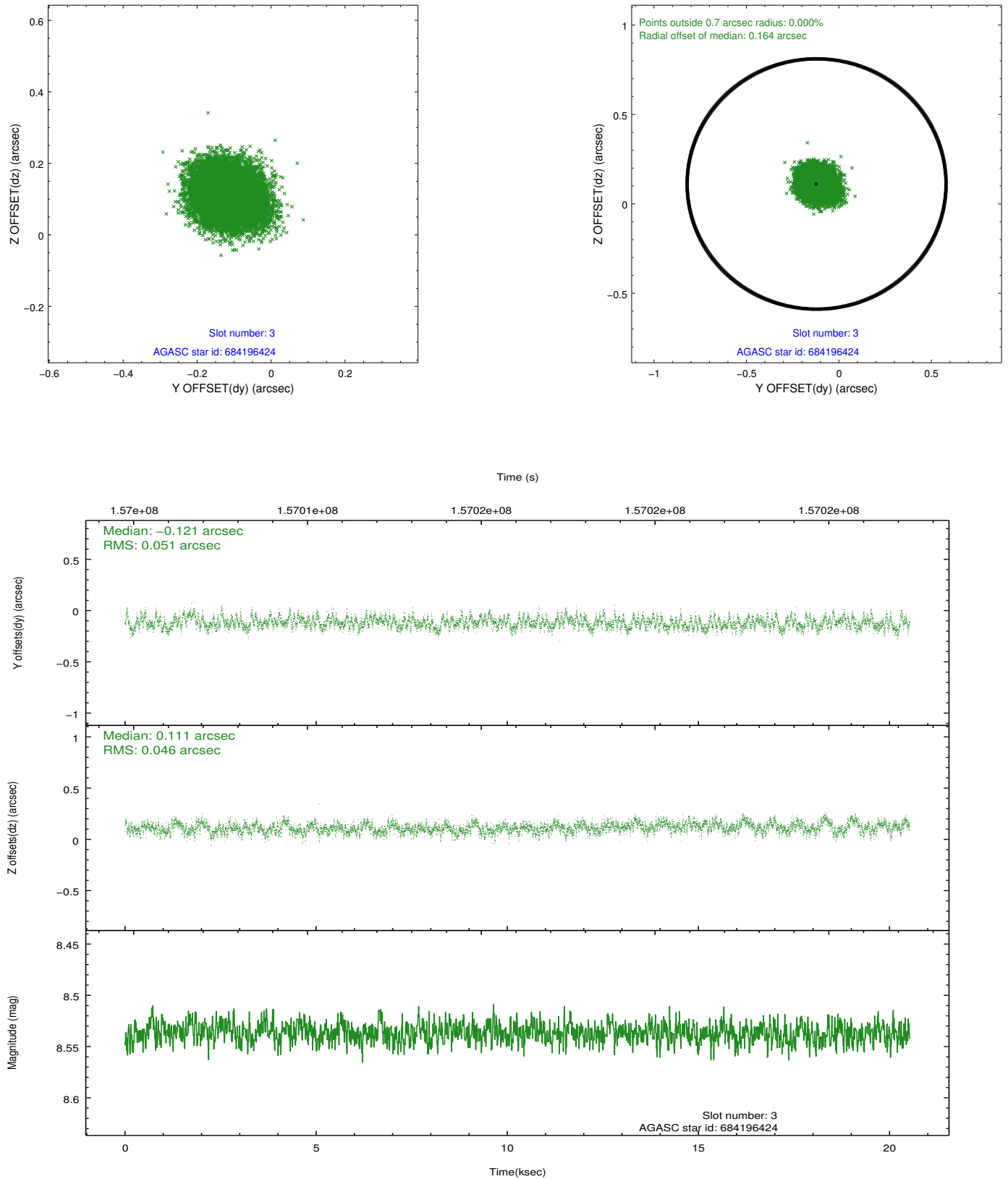


Slot Statistics

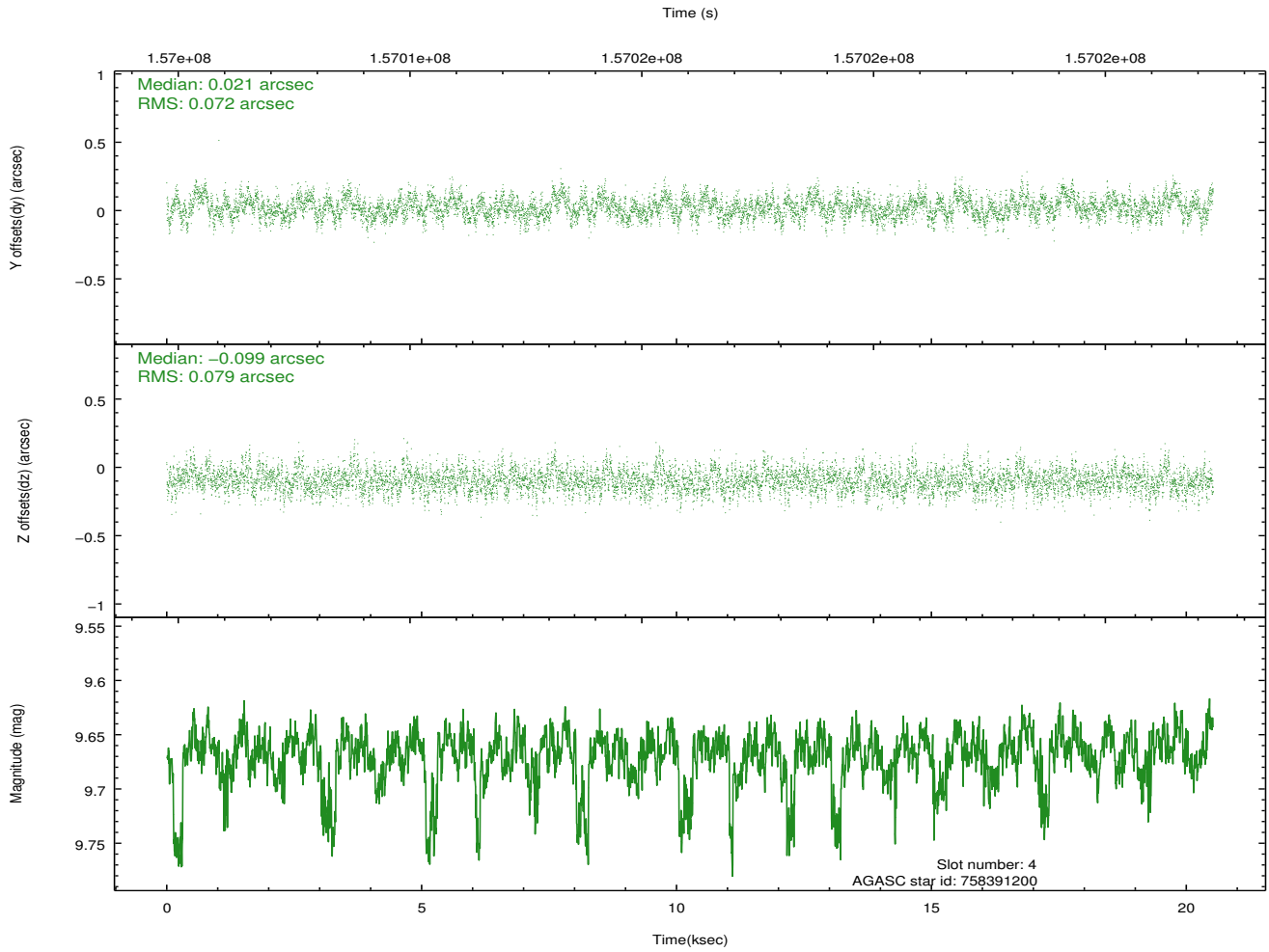
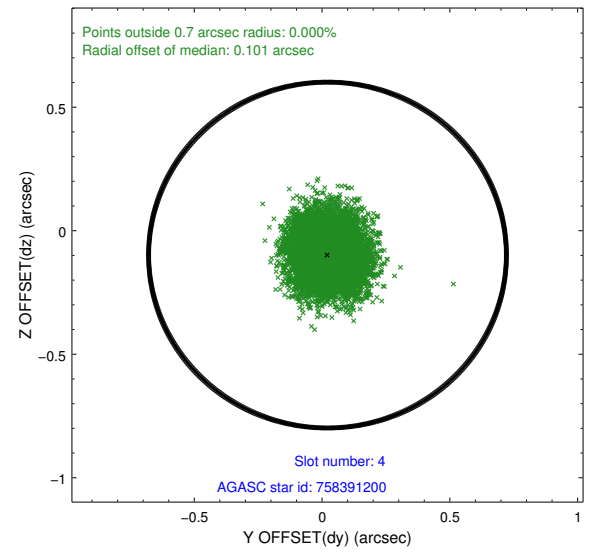
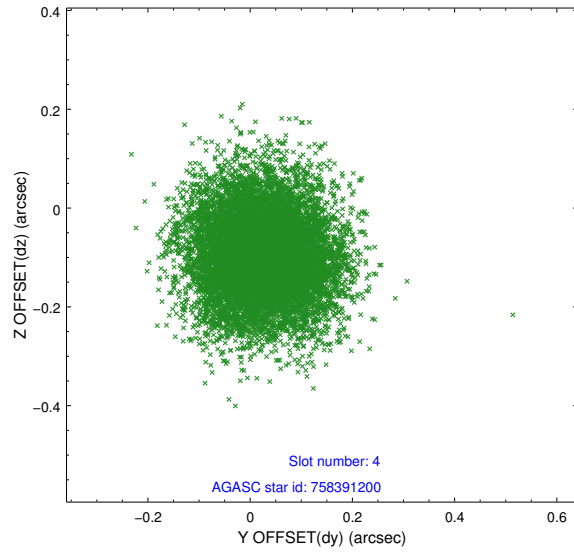
slot	status	id	mag	n_pts	med_dy	med_dz	dr1	dr2	ra	dec	mean_y	mean_z
0	FID	ACIS-I-1	7.24	5003	0.024	-0.003	0.023	0.033	0.000000	0.000000	937.10	-952.64
1	FID	ACIS-I-5	7.23	5002	-0.120	0.055	0.014	0.023	0.000000	0.000000	-1811.04	944.81
2	FID	ACIS-I-6	7.25	5004	0.006	0.021	0.015	0.022	0.000000	0.000000	402.45	1589.47
3	GUIDE	684196424	8.54	10005	-0.121	0.111	0.074	0.117	322.506260	-7.293564	-1144.19	1117.24
4	GUIDE	758391200	9.67	10003	0.021	-0.099	0.114	0.185	321.793565	-8.009857	182.73	-2252.58
5	GUIDE	758392024	9.93	9993	0.087	-0.085	0.147	0.243	321.929910	-8.157103	864.23	-2023.05
6	GUIDE	756678992	10.16	10007	-0.114	0.046	0.136	0.221	321.664663	-7.837970	-569.27	-2422.91
7	GUIDE	758391840	9.83	9995	0.128	0.021	0.112	0.189	322.196358	-8.128595	1154.96	-1113.27

2.4 Star Slots

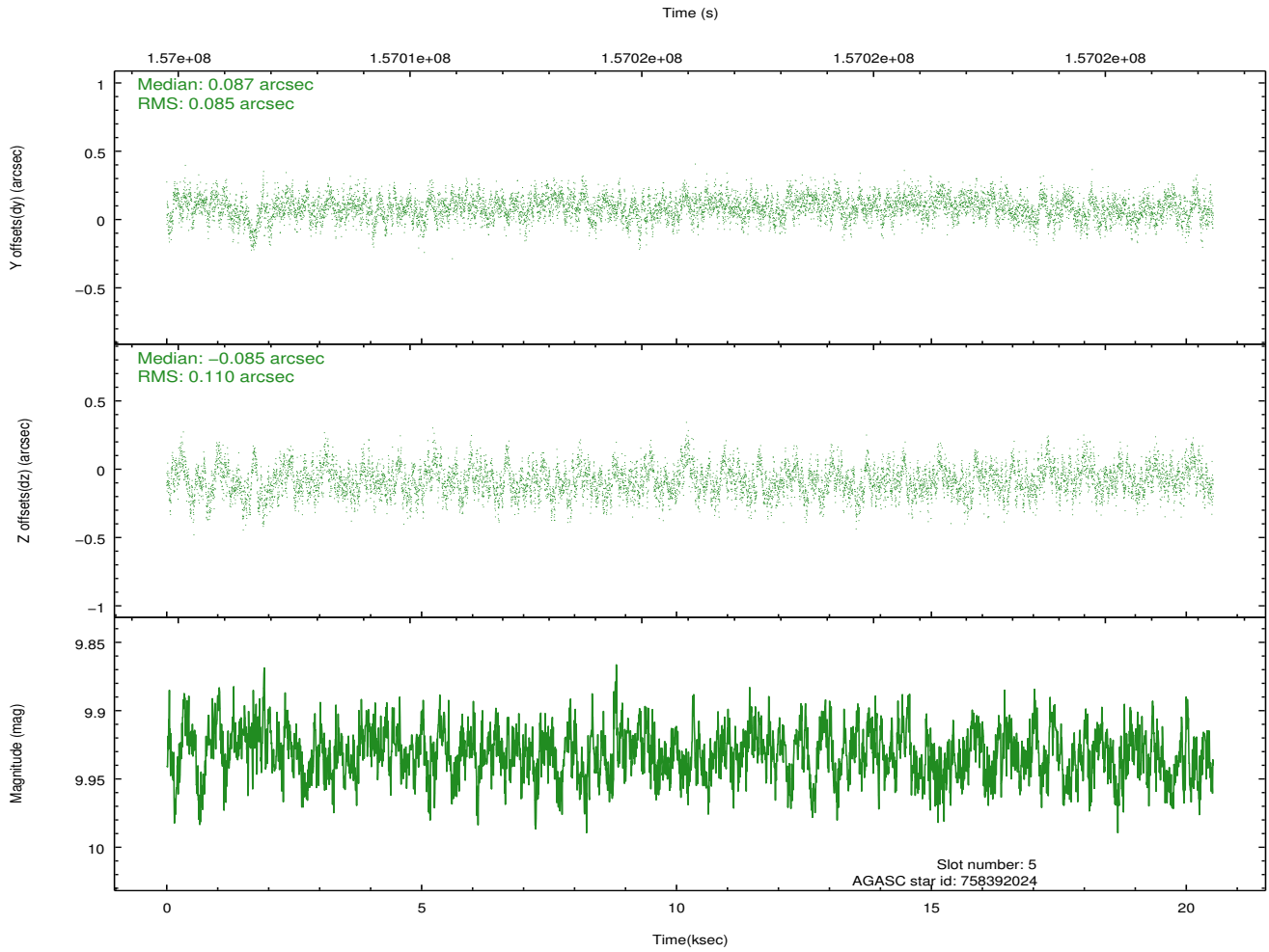
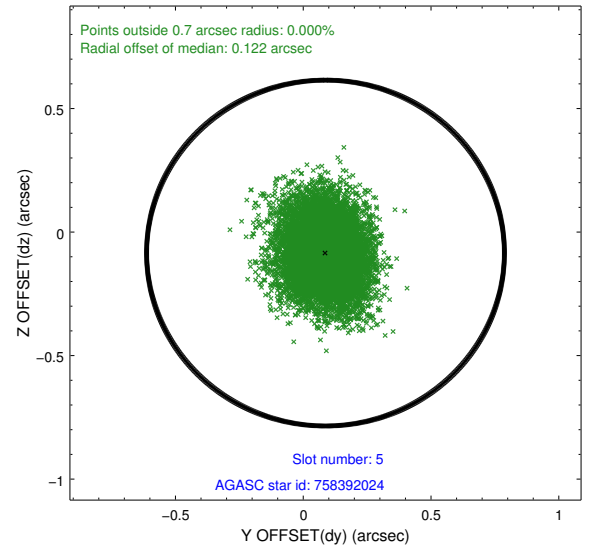
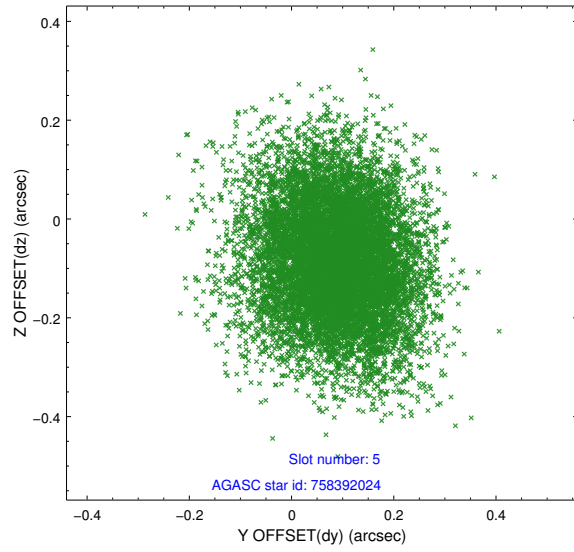
2.4.1 Slot 3



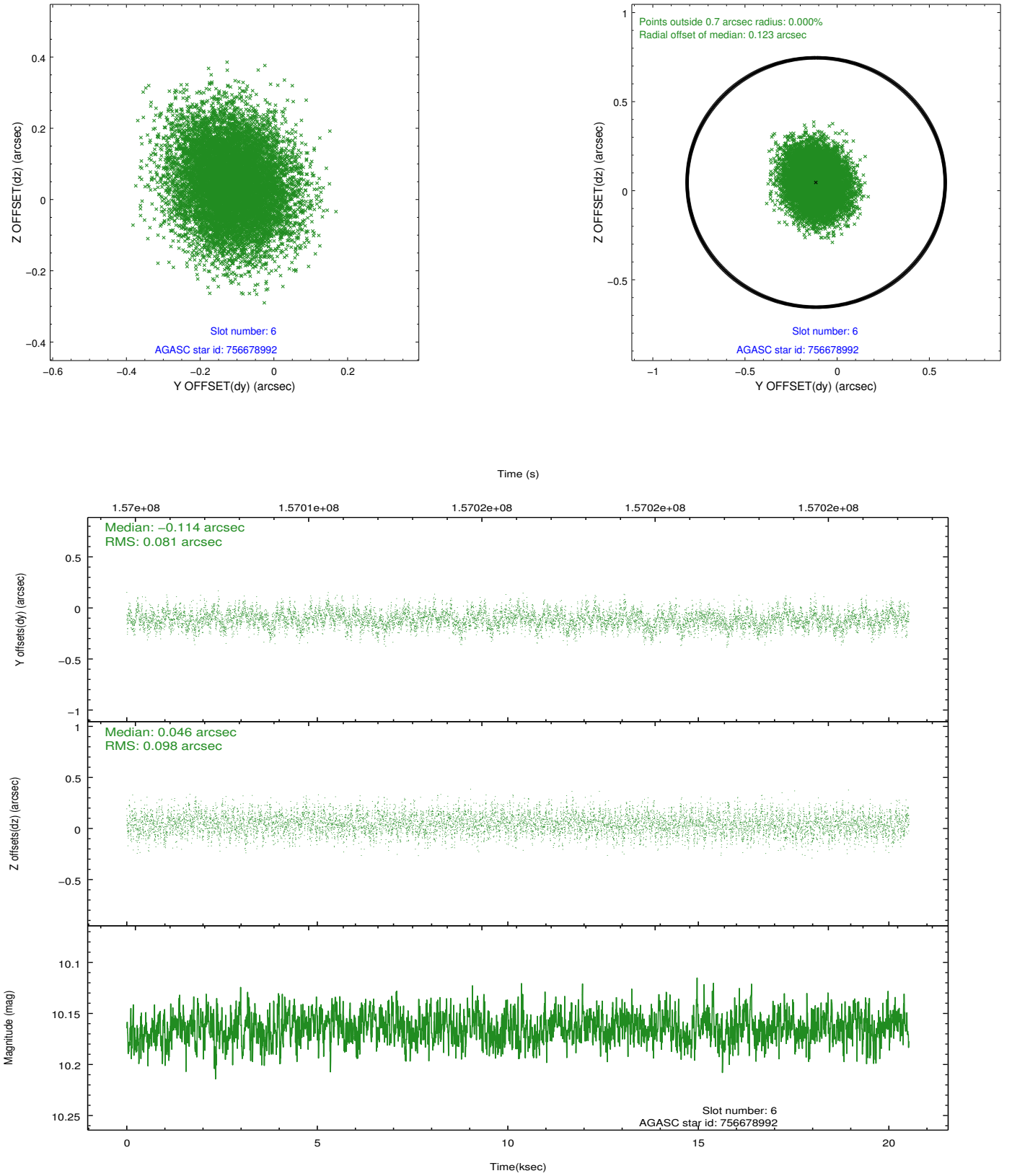
2.4.2 Slot 4



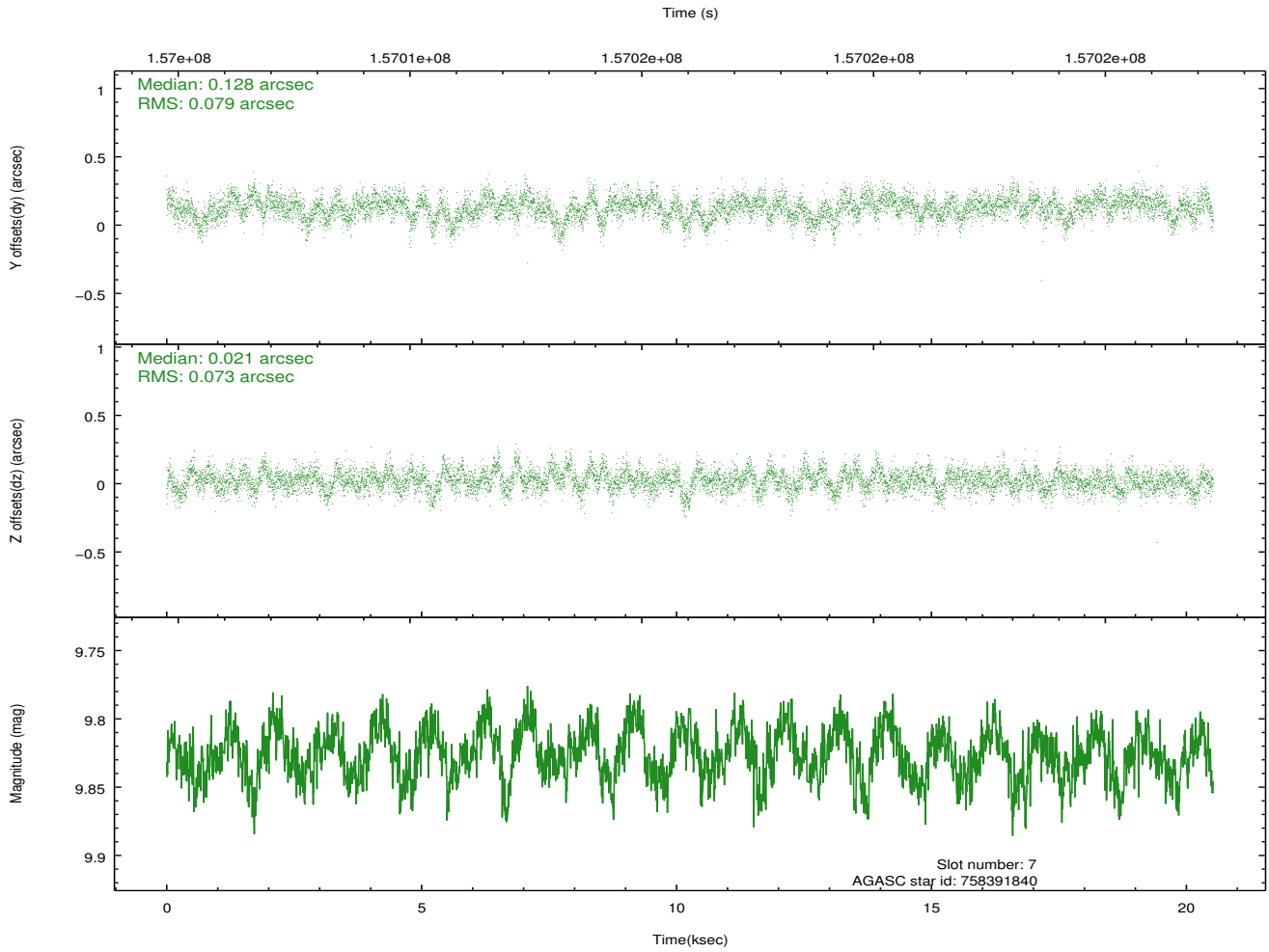
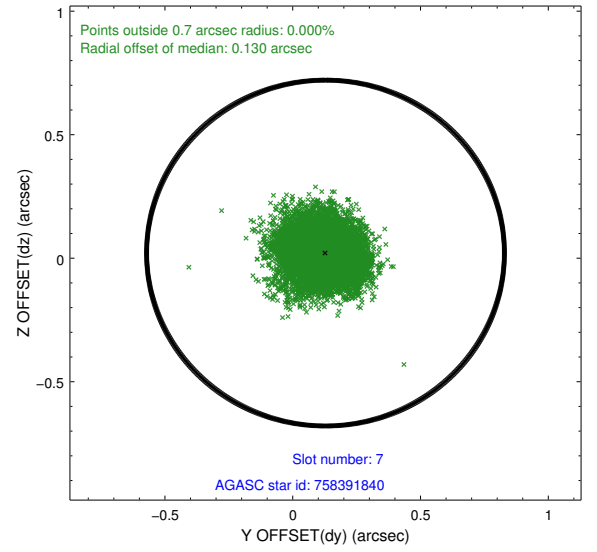
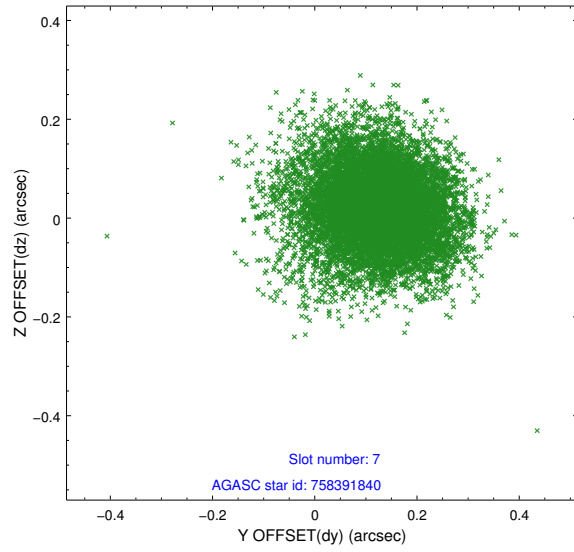
2.4.3 Slot 5



2.4.4 Slot 6

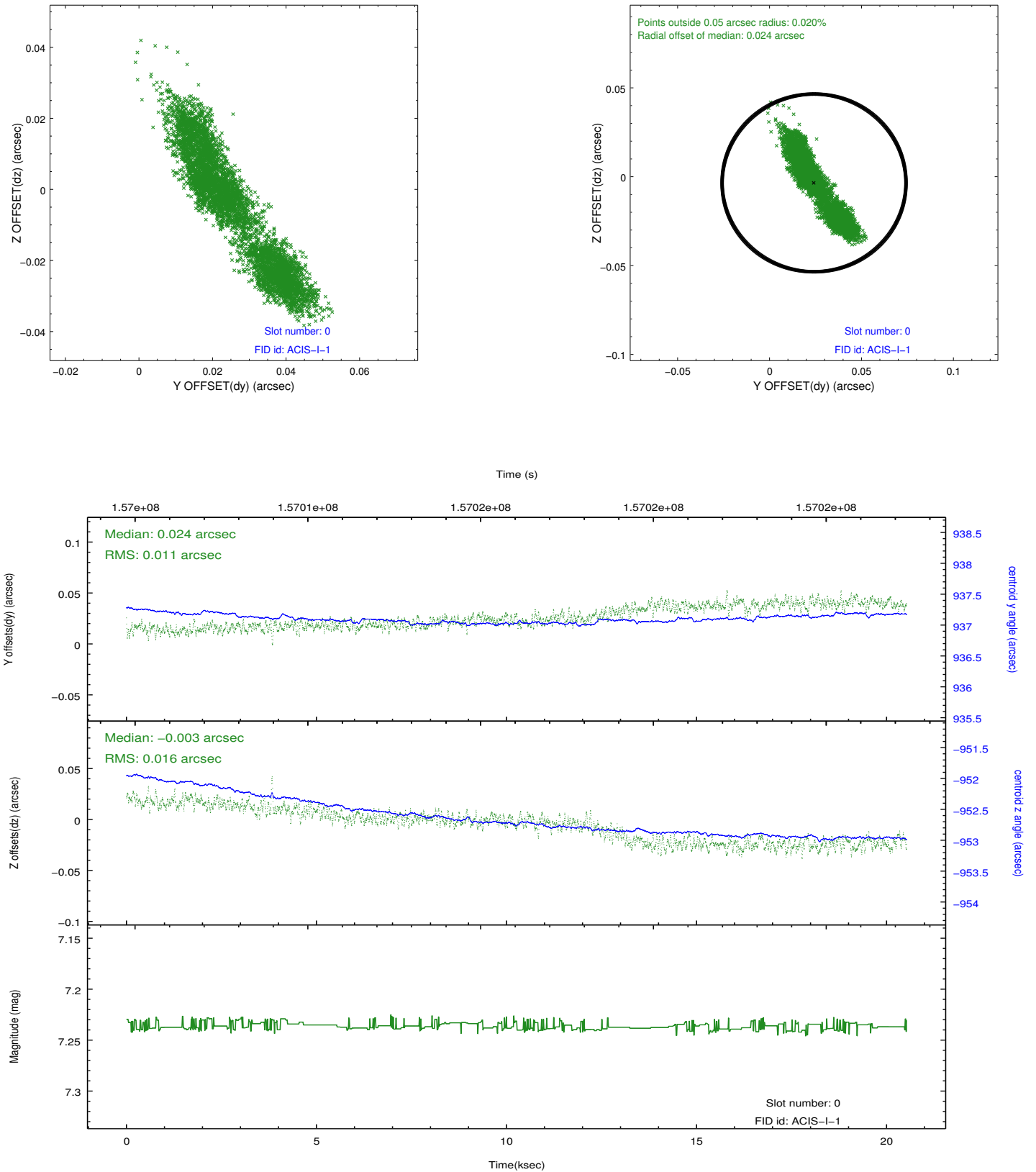


2.4.5 Slot 7

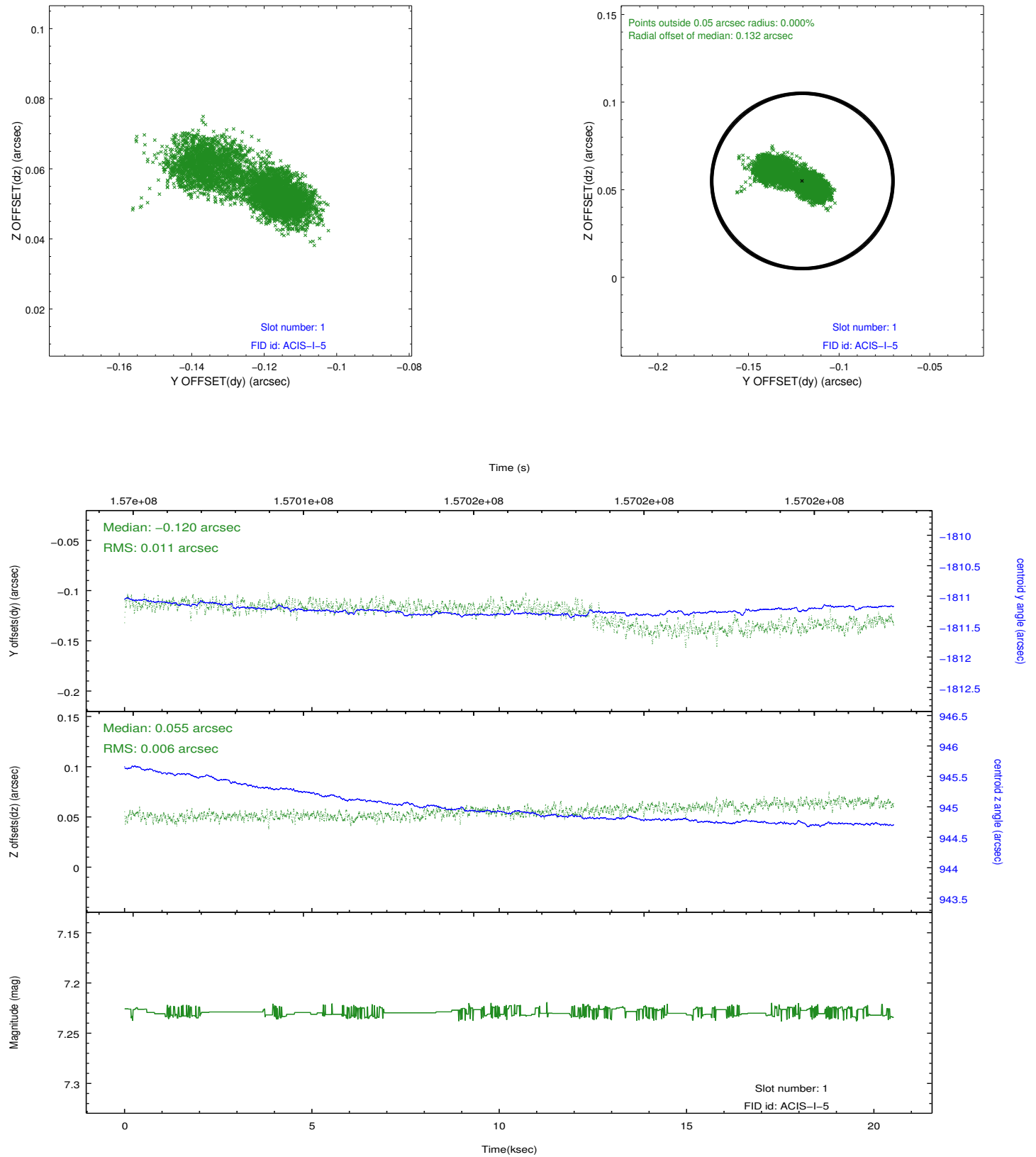


2.5 FID Slots

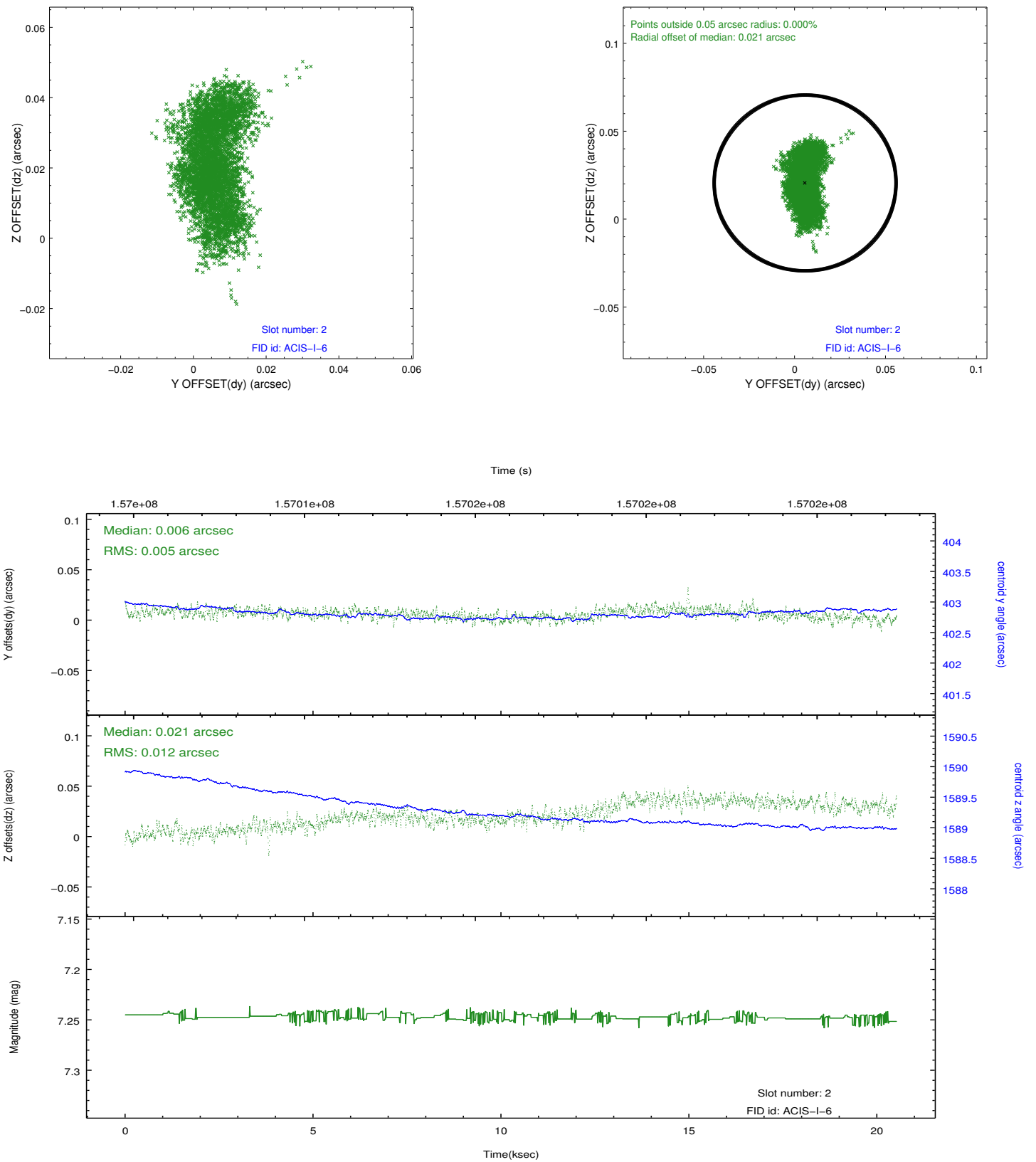
2.5.1 Slot 0



2.5.2 Slot 1



2.5.3 Slot 2



A Summary

A.1 Status

V&V Scientist	Jen Lauer
V&V Date (YYYY-MM-DD)	2012.10.31
V&V Edition	1
V&V Disposition and Status	OK
V&V Charge Time	20.122

A.2 Comments