

# V&V Reference Report

## L2 ASCDS Version : 7.6.10

Observation 3197 - L2 Version 001  
Chandra X-Ray Center

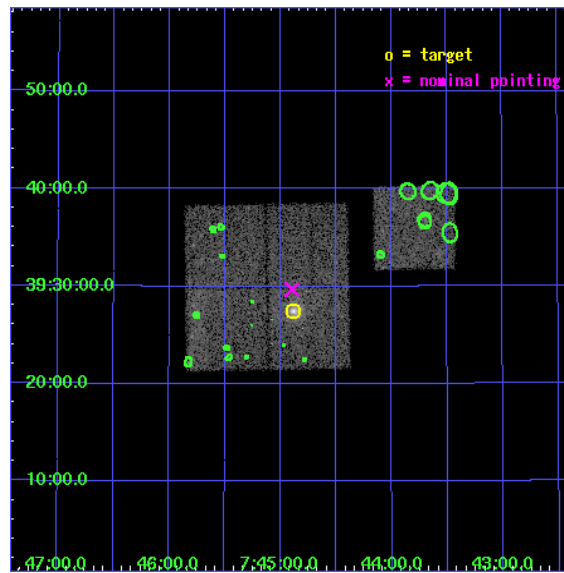
L2 Processing Date : Jan 12 2007

## Contents

<b>1</b>	<b>Front</b>	<b>2</b>
<b>2</b>	<b>OBI</b>	<b>3</b>
2.1	OBI . . . . .	3
2.1.1	Images . . . . .	3
2.1.2	Bias . . . . .	3
2.1.3	Parameters . . . . .	4
2.1.4	Events . . . . .	4
2.2	Compared Parameters . . . . .	5
2.3	Aspect . . . . .	6
2.4	Star Slots . . . . .	9
2.4.1	Slot 3 . . . . .	9
2.4.2	Slot 4 . . . . .	10
2.4.3	Slot 5 . . . . .	11
2.4.4	Slot 6 . . . . .	12
2.4.5	Slot 7 . . . . .	13
2.5	FID Slots . . . . .	14
2.5.1	Slot 0 . . . . .	14
2.5.2	Slot 1 . . . . .	15
2.5.3	Slot 2 . . . . .	16
<b>3</b>	<b>Point Sources</b>	<b>17</b>
<b>A</b>	<b>Summary</b>	<b>18</b>
A.1	Status . . . . .	18
A.2	Comments . . . . .	18

# 1 Front

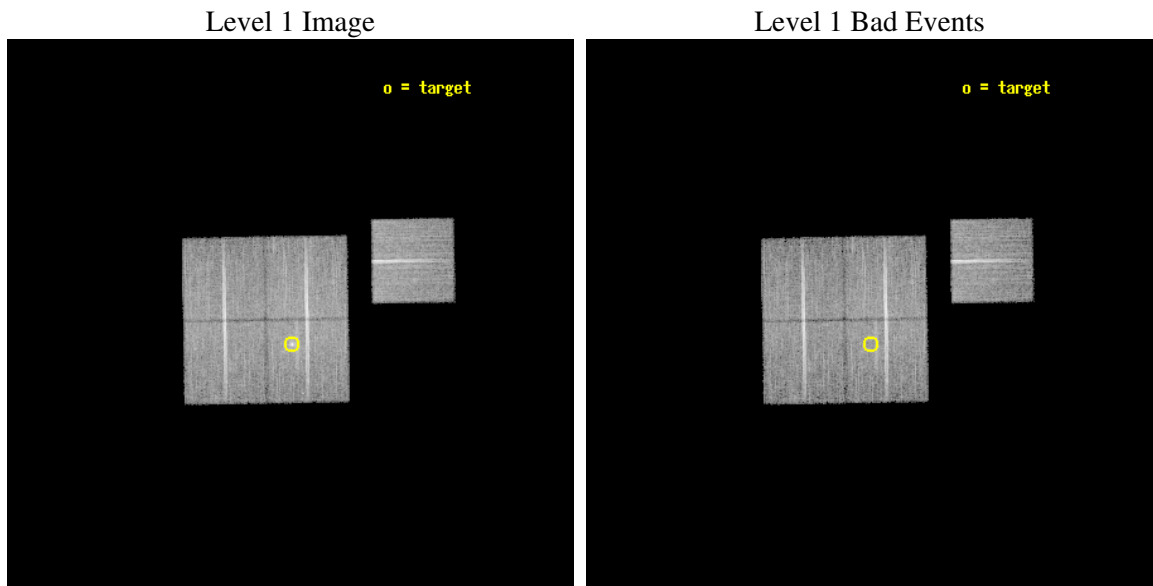
seq_num	800197
obs_id	3197
title	OBSERVATION OF MACS CLUSTERS, $Z>0.5$
observer	DR. LEON VANSPEYBROECK
object	MACS-J0744.8+3927
dtcycle	0
cycle	P
ra_targ	116.220833
dec_targ	39.457222
ra_nom	116.22416796501
dec_nom	39.494844402229
roll_nom	89.085479252091
revision	2
ontime	20506.499960572
livetime	20238.567441921
ontime0	20500.218040079
ontime1	20503.358980402
ontime2	20500.218010157
ontime3	20506.499960572
ontime6	20506.499960572
l2events	50490



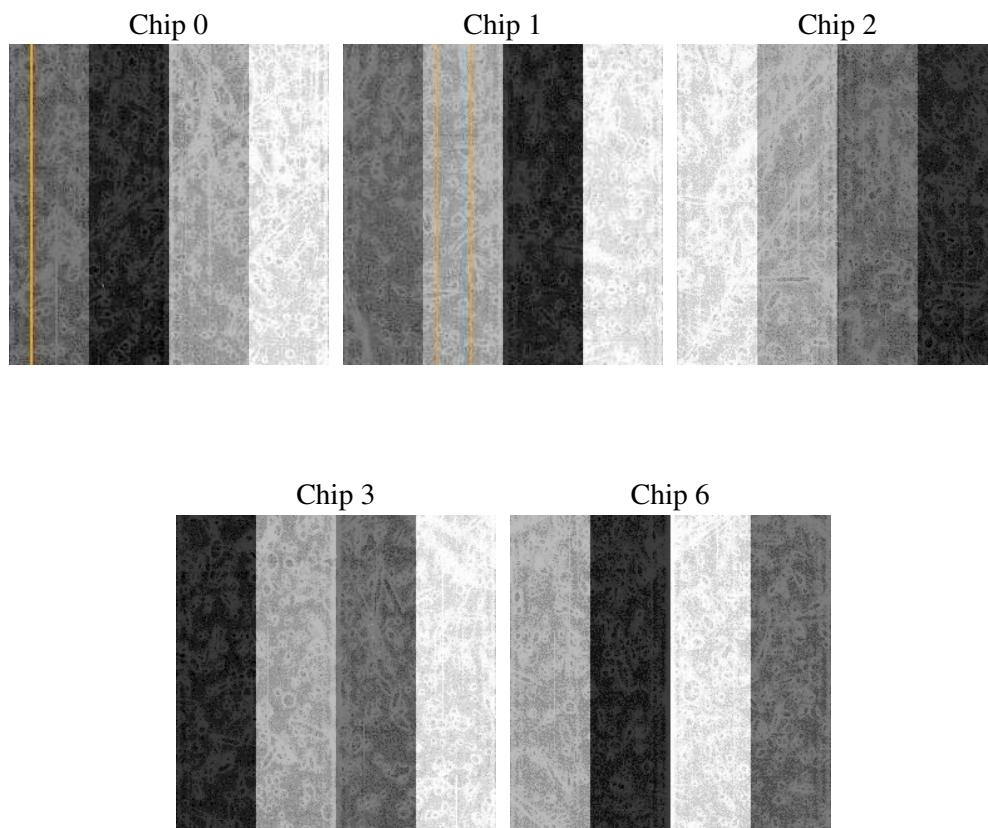
## 2 OBI

### 2.1 OBI

#### 2.1.1 Images



#### 2.1.2 Bias



### 2.1.3 Parameters

obi_num	0
ascdsver	7.6.10
caldbver	3.3.0
date	2007-01-12T06:59:58
revision	2

sched_exp_time	20600.000000
ontime	20506.499960572
ontime0	20500.218040079
ontime1	20503.358980402
ontime2	20500.218010157
ontime3	20506.499960572
ontime6	20506.499960572
l1events	551458

### 2.1.4 Events

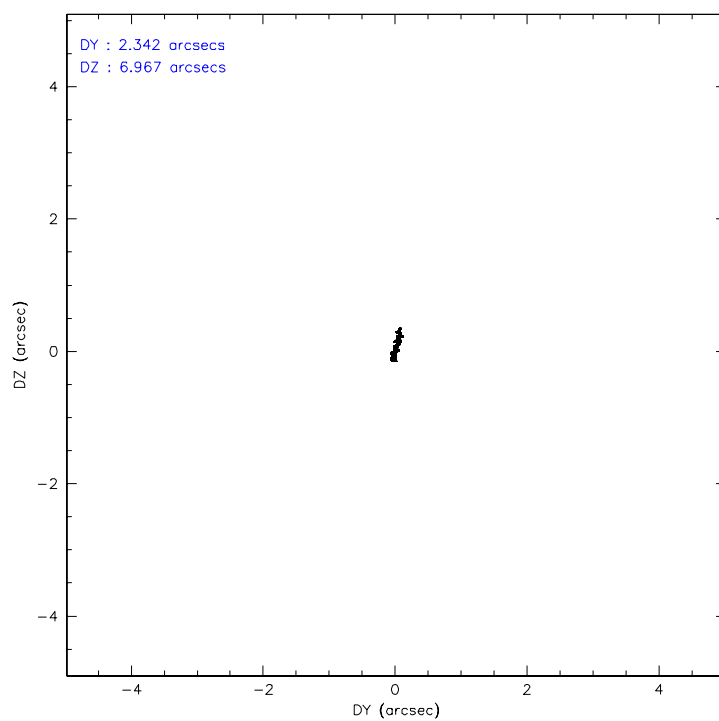
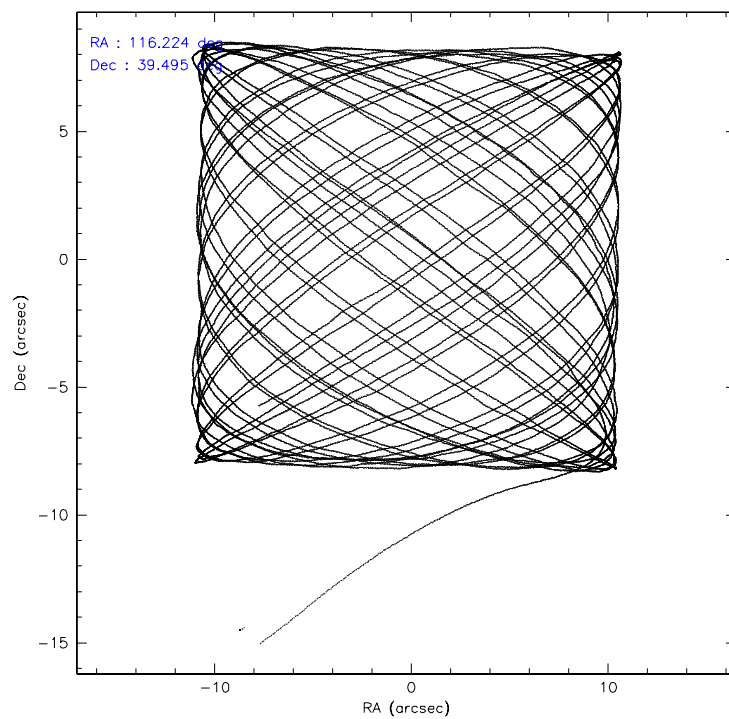
	ccd 0	ccd 1	ccd 2	ccd 3	ccd 6
level 1 events	103137	104562	117150	114632	111977
rejected events	91860	91848	106384	100608	100059
rejected %	89%	87%	90%	87%	89%

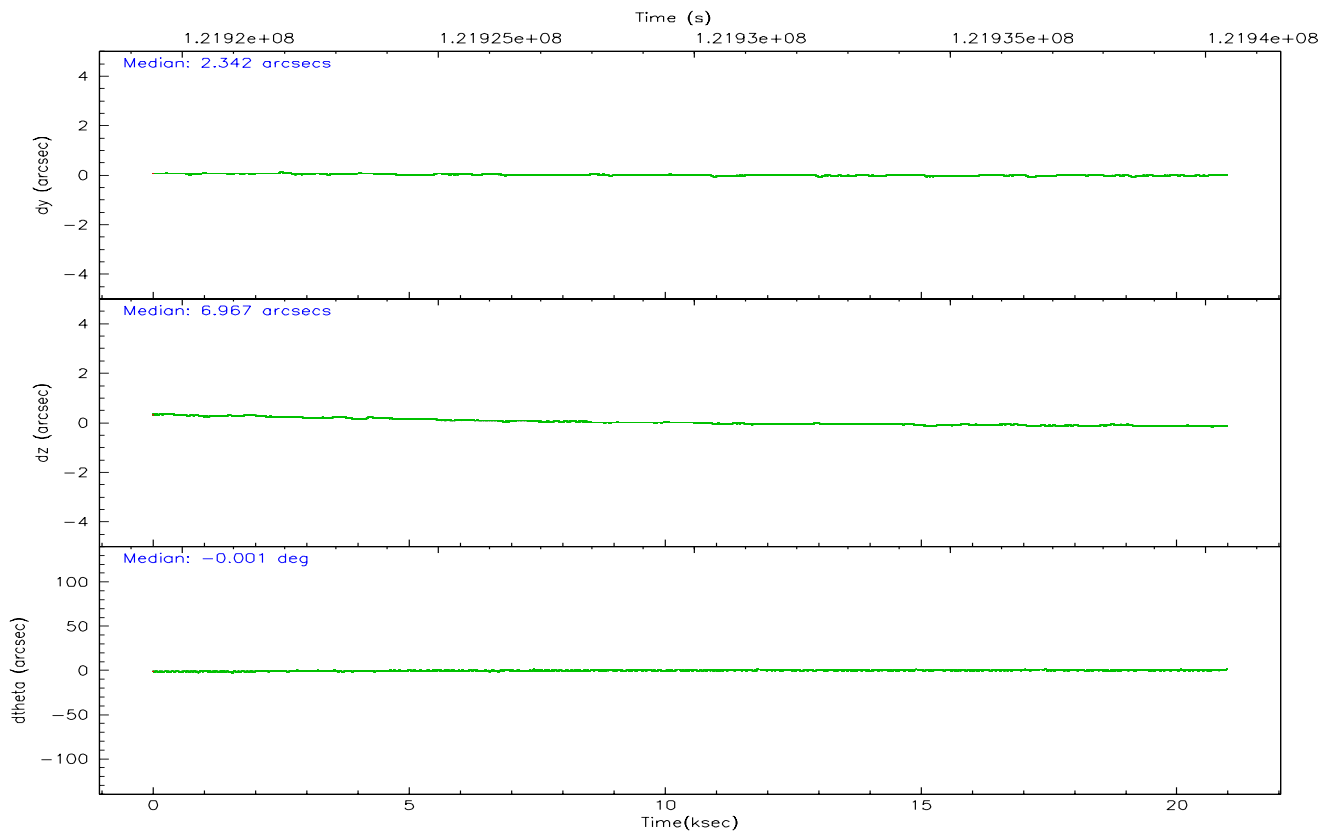
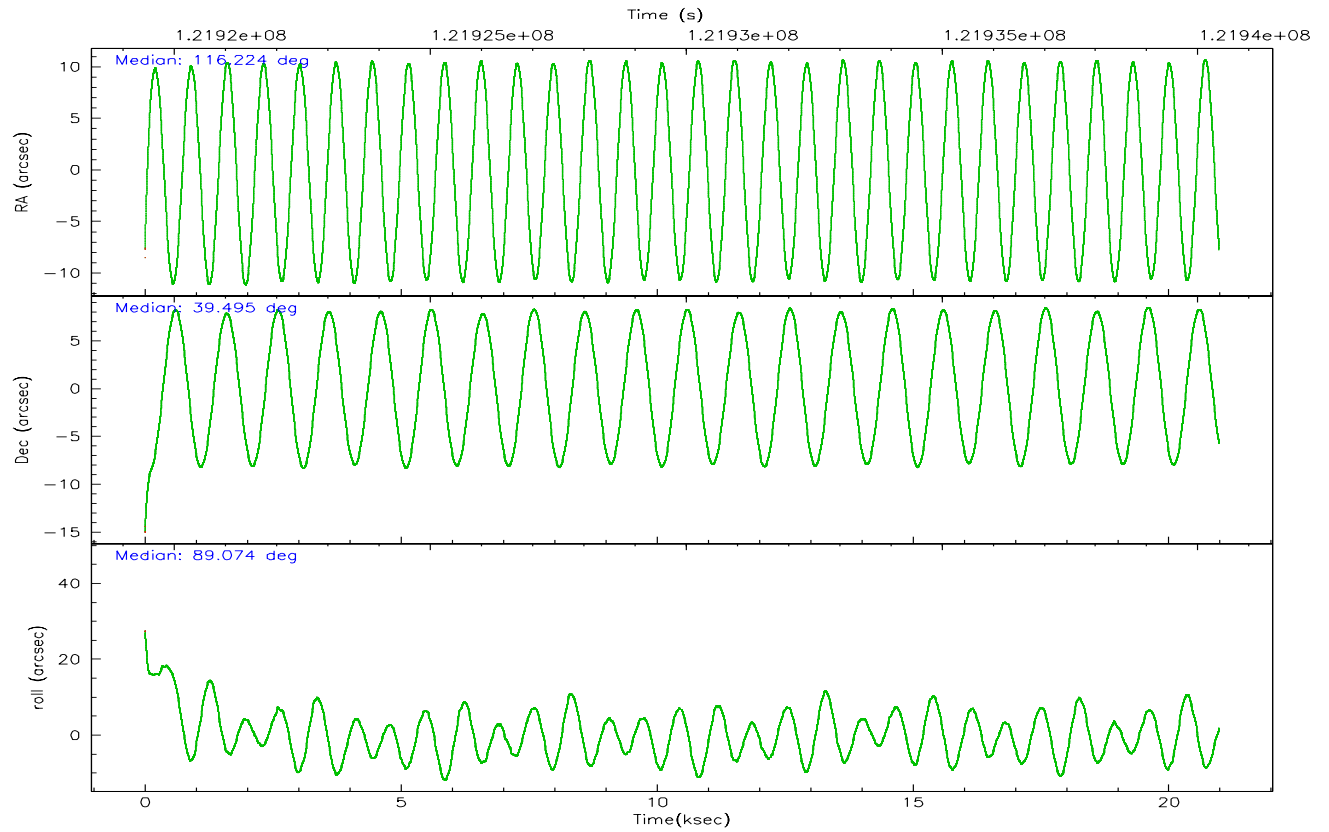
	ccd 0	ccd 1	ccd 2	ccd 3	ccd 6
grade 0 events	4155	4870	3863	6885	4517
	4%	4%	3%	6%	4%
grade 1 events	49	58	48	66	49
	0%	0%	0%	0%	0%
grade 2 events	2542	2599	2446	2518	2430
	2%	2%	2%	2%	2%
grade 3 events	1246	1427	1117	1250	1321
	1%	1%	0%	1%	1%
grade 4 events	1208	1362	1259	1236	1295
	1%	1%	1%	1%	1%
grade 5 events	3578	3826	3347	3899	4064
	3%	3%	2%	3%	3%
grade 6 events	2136	2462	2084	2137	2356
	2%	2%	1%	1%	2%
grade 7 events	88223	87958	102986	96641	95945
	85%	84%	87%	84%	85%

## 2.2 Compared Parameters

Parameter	Planned	Actual	Parameter	Planned	Actual
Instrument	ACIS	ACIS	Obspar format version number	6	6
Detector	ACIS-01236	ACIS-01236	Obspar file type	PREDICTED	ACTUAL
Grating	NONE	NONE	Obspar update status	NONE	UPDATED
Data mode	VFAINT	VFAINT	Number of optional ACIS chips dropped	0	0
Observation mode	POINTING	POINTING	On-chip summing requested	N	N
Pointing RA	116.241475	116.2241679650113	Subarray requested	NONE	NONE
Pointing Dec	39.470908	39.49484440222854	Alternating exposures requested	N	N
Pointing Roll	88.865786	89.08547925209129	Primary exposure time	0.000000	3.1
SIM focus pos (mm)	-0.782348	-0.7809083437167272			
SIM defocus (mm)	0	0.001439871863259334			
SIM translation stage pos (mm)	-227.742463	-227.734108438797			
SIM translation stage offset (mm)	-5.85	-5.858344564132665			
Observation start time	121919814.184000	121918762.58922			
Observation start date	2001-11-12T02:35:50	2001-11-12T02:19:22			
Observation end time	121940414.184000	121940918.99011			
Observation end date	2001-11-12T08:19:10	2001-11-12T08:28:38			
Read mode	TIMED	TIMED			

## 2.3 Aspect





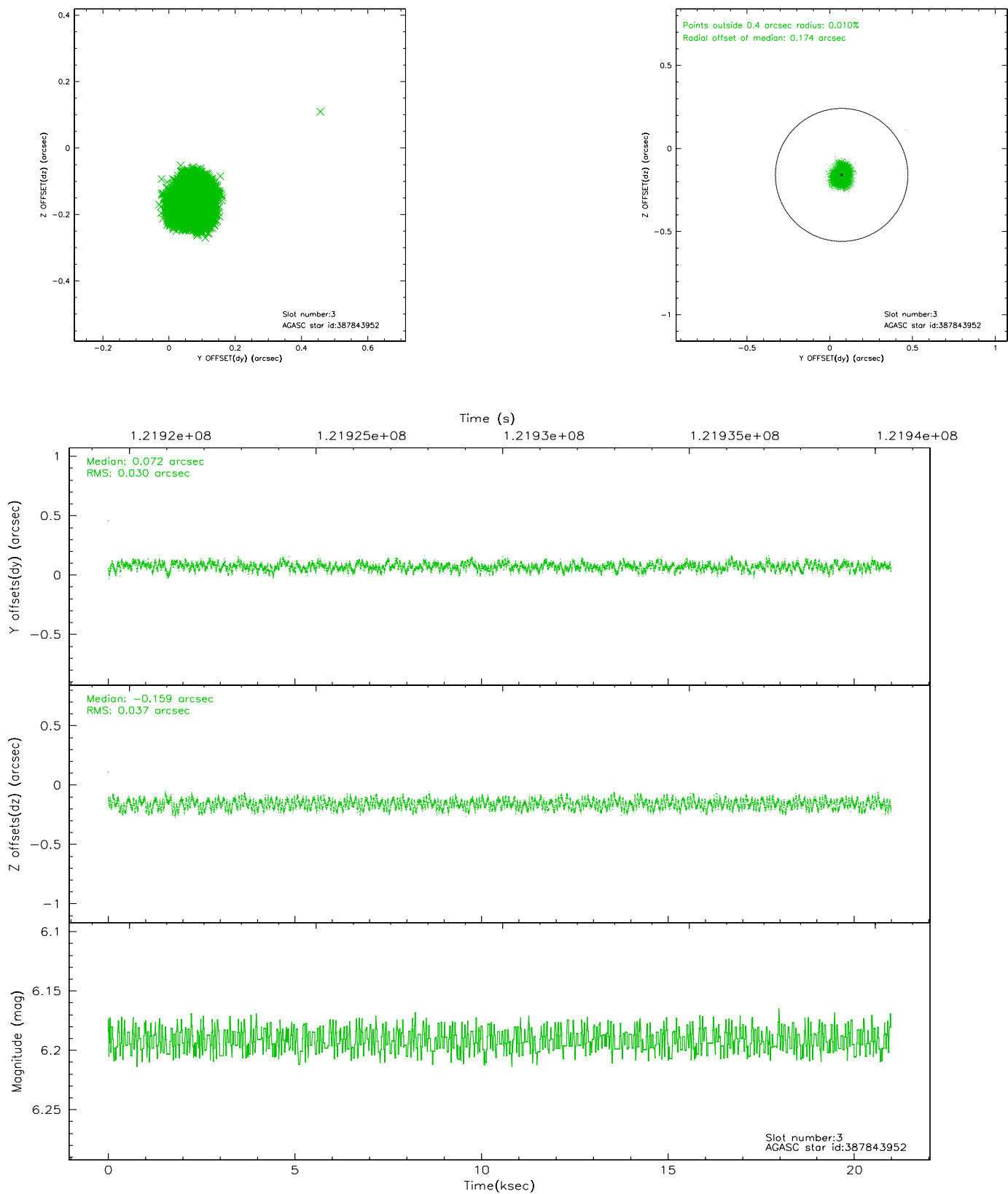
### Slot Statistics

slot	status	id	mag	n_pts	med_dy	med_dz	dr1	dr2	ra	dec	mean_y	mean_z
0	FID	ACIS-I-1	7.24	5117	0.026	0.032	0.009	0.015	0.000000	0.000000	937.36	-950.61
1	FID	ACIS-I-5	7.23	5117	-0.079	0.077	0.008	0.013	0.000000	0.000000	-1810.73	946.85
2	FID	ACIS-I-6	7.25	5118	-0.038	-0.038	0.008	0.013	0.000000	0.000000	402.70	1591.41
3	GUIDE	387843952	6.19	10235	0.072	-0.159	0.052	0.078	116.039537	38.837802	-2289.42	521.17
4	GUIDE	388378136	7.39	10235	-0.078	0.099	0.061	0.099	116.426409	39.546945	284.06	-506.88
5	GUIDE	388371256	9.03	10232	-0.152	0.214	0.077	0.126	116.958551	39.618125	577.23	-1976.49
6	GUIDE	388381184	9.28	10230	0.027	-0.096	0.086	0.143	115.796137	39.415707	-220.46	1234.84
7	GUIDE	387846104	9.39	10230	0.134	-0.054	0.094	0.163	115.792368	39.298643	-641.90	1239.34

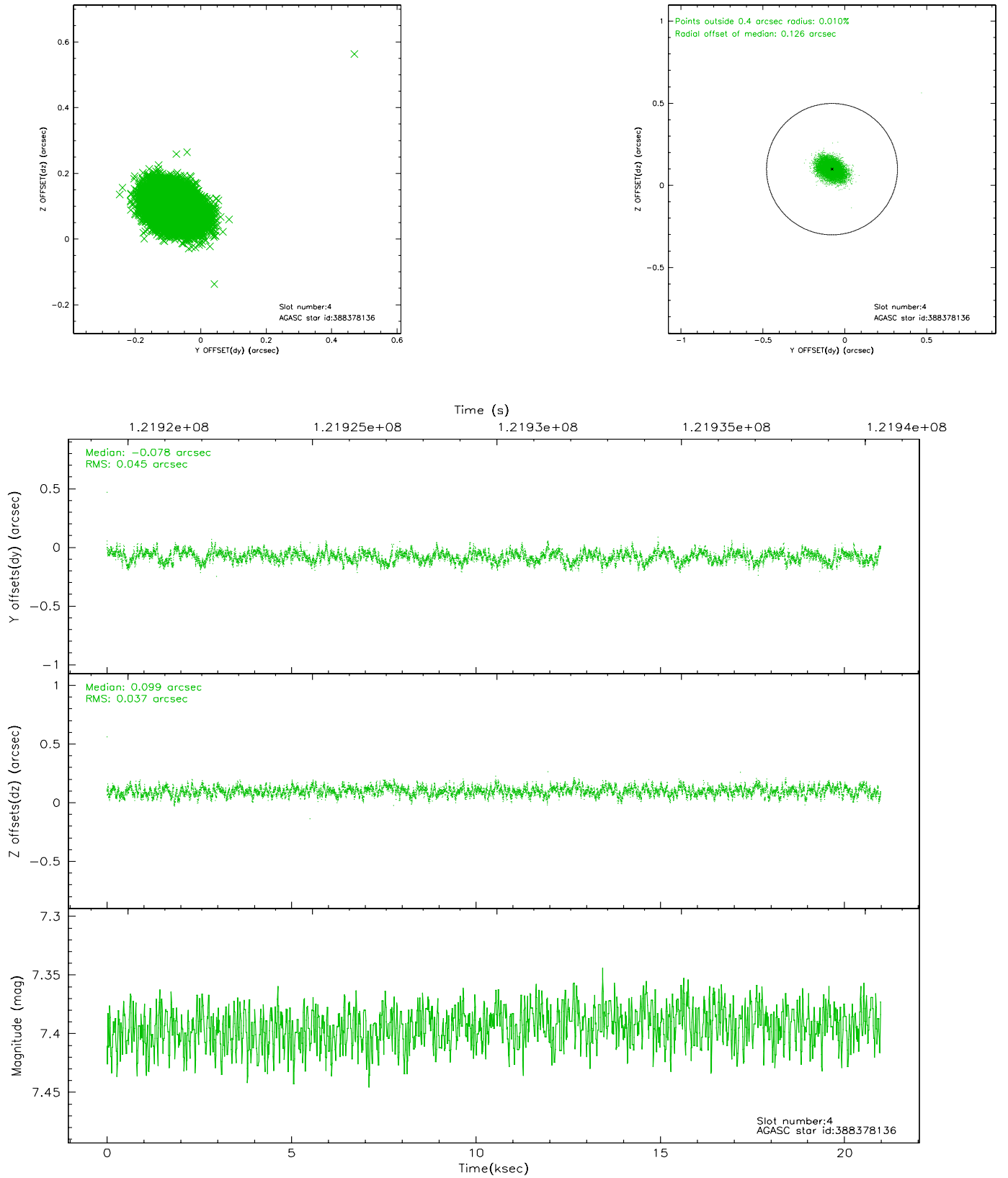


## 2.4 Star Slots

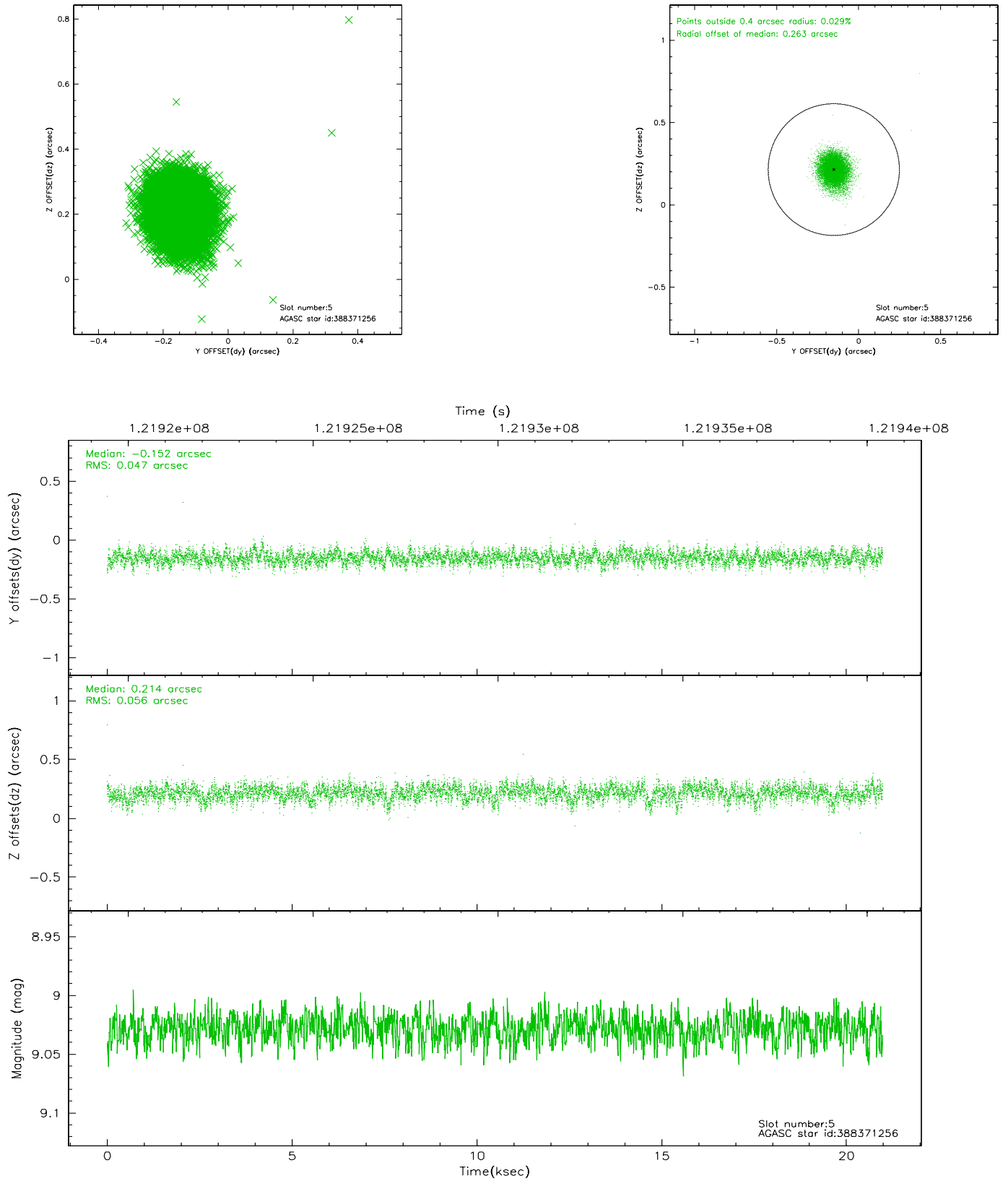
### 2.4.1 Slot 3



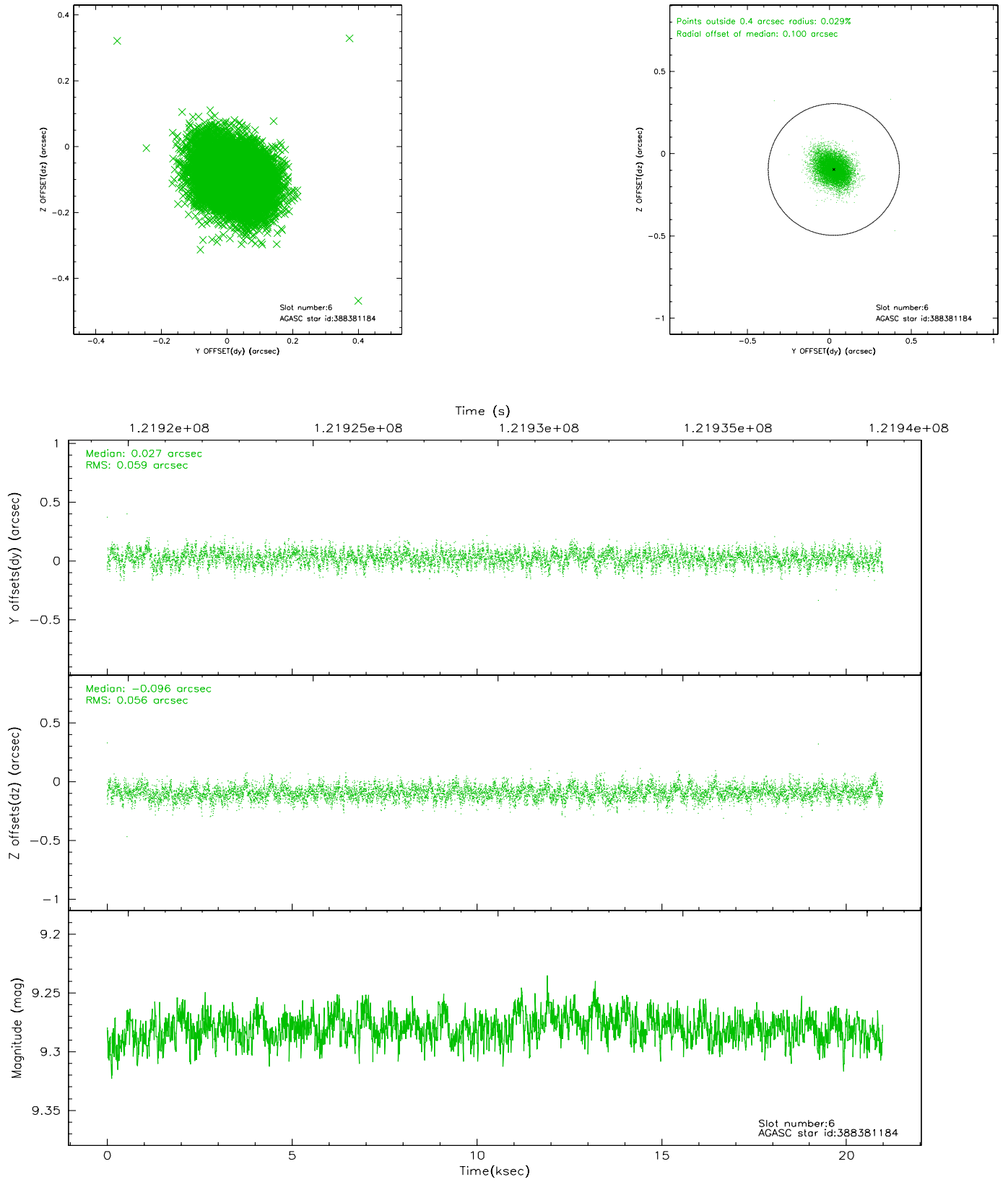
## 2.4.2 Slot 4



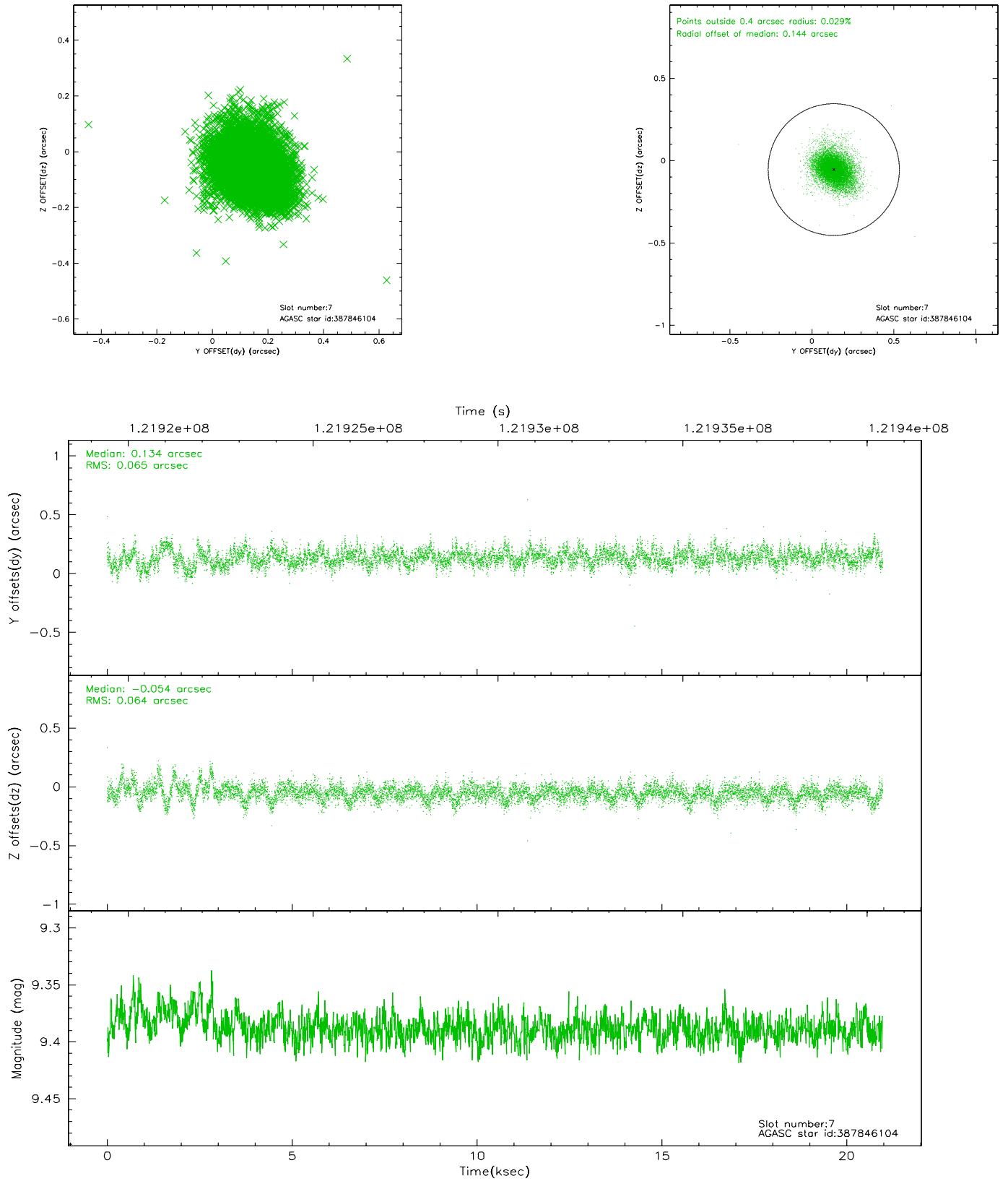
### 2.4.3 Slot 5



## 2.4.4 Slot 6

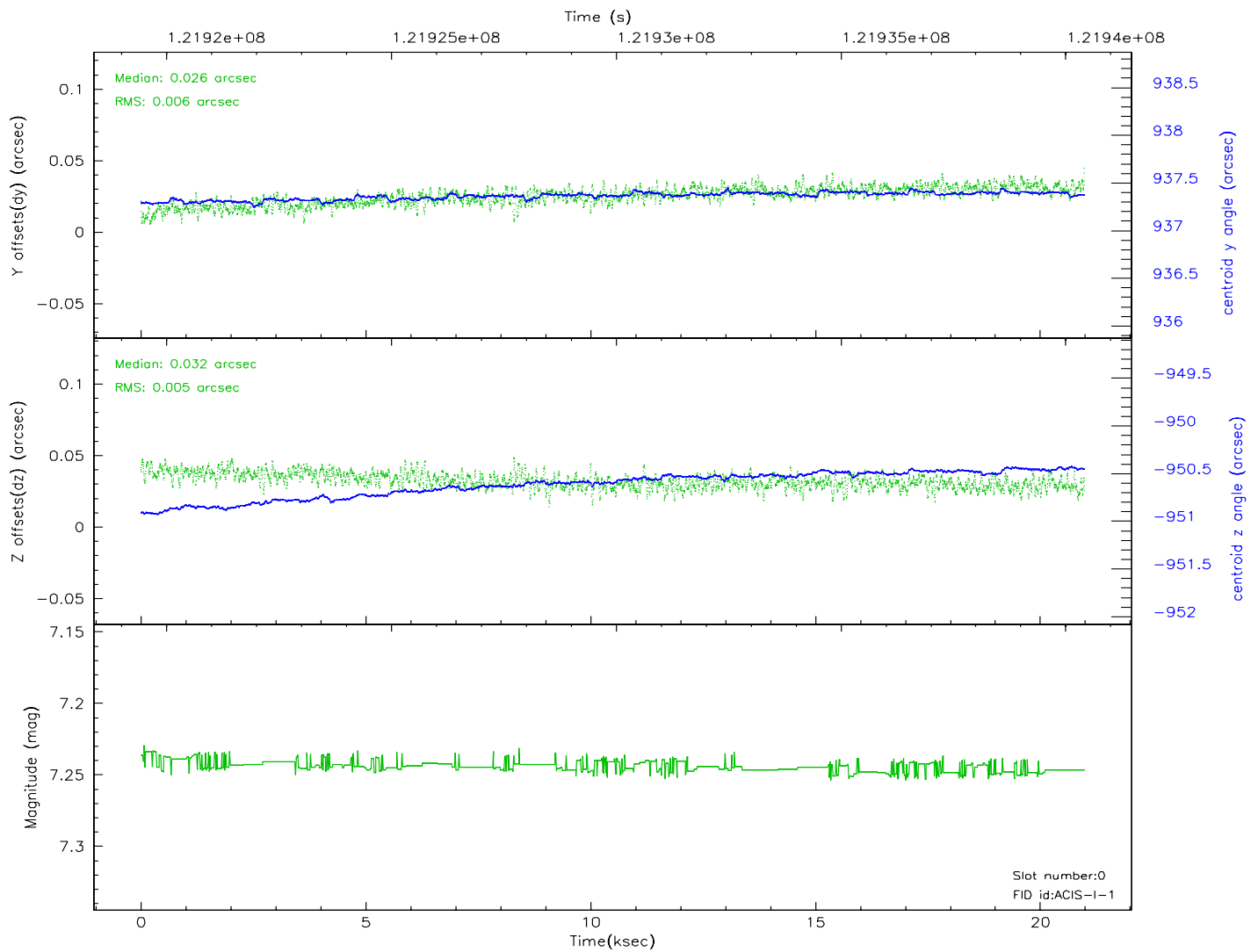
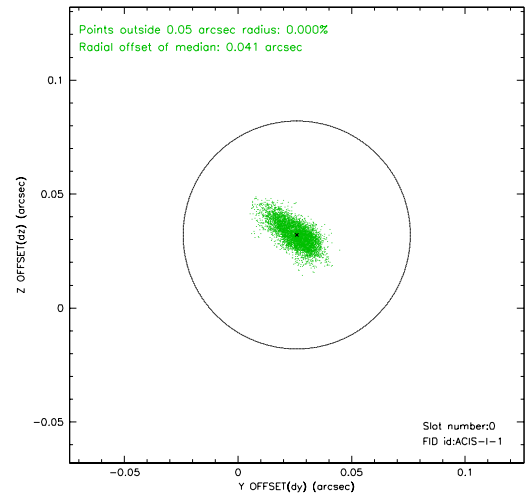
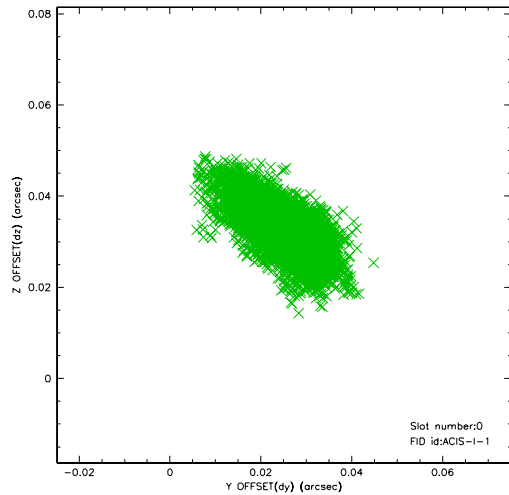


## 2.4.5 Slot 7

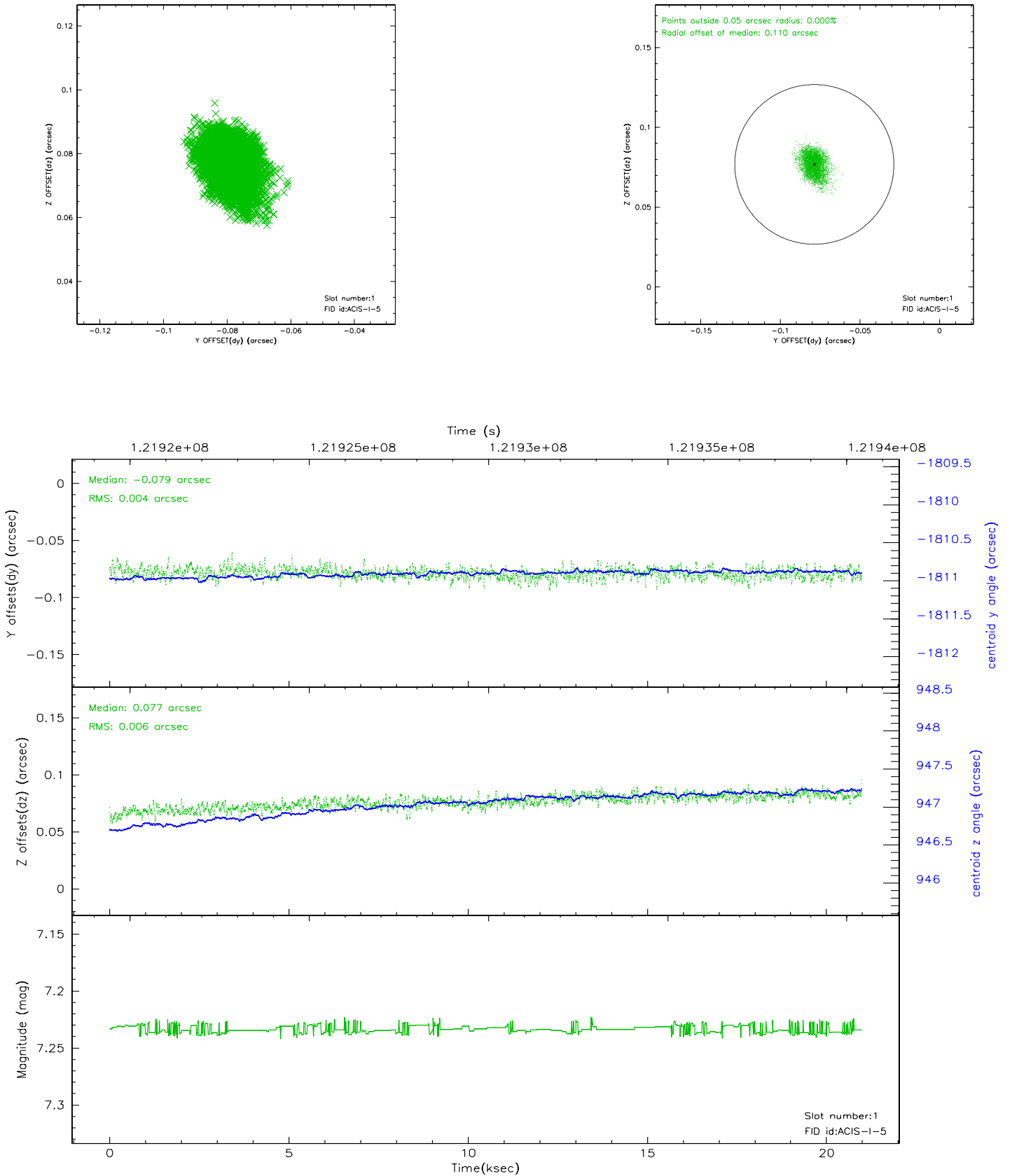


## 2.5 FID Slots

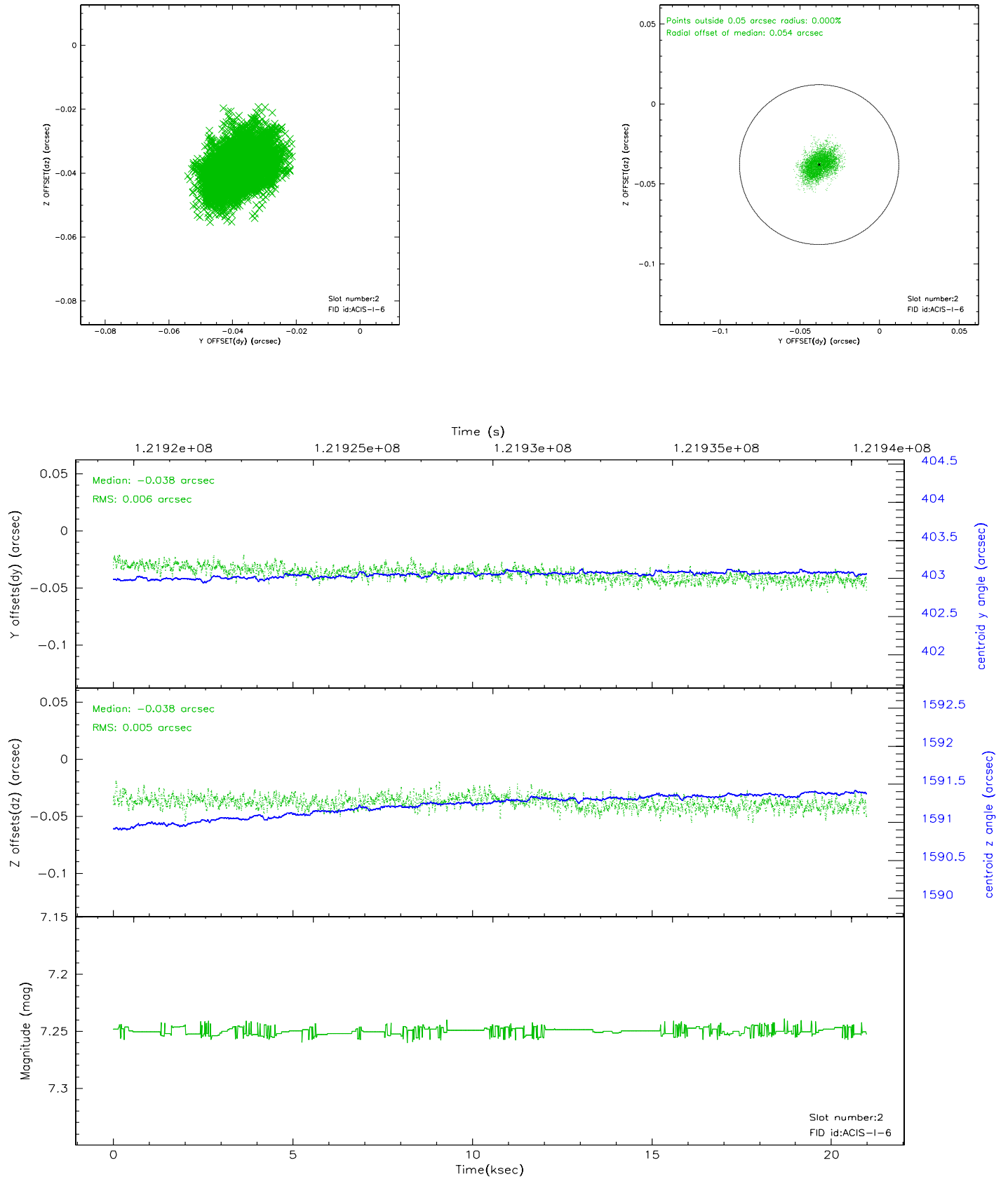
### 2.5.1 Slot 0



## 2.5.2 Slot 1

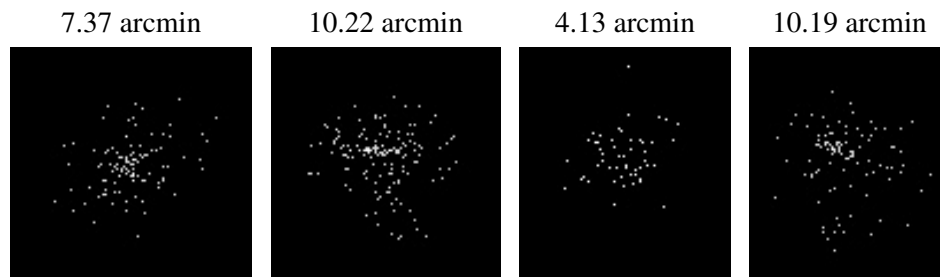


### 2.5.3 Slot 2





### 3 Point Sources



## A Summary

### A.1 Status

V&V Scientist	Beth Sundheim
V&V Date (YYYY-MM-DD)	2007.01.12
V&V Edition	1
V&V Disposition and Status	OK
V&V Charge Time	20.509

### A.2 Comments