

V&V Reference Report

L2 ASCDS Version : 7.6.9

Observation 3190 - L2 Version 001
Chandra X-Ray Center

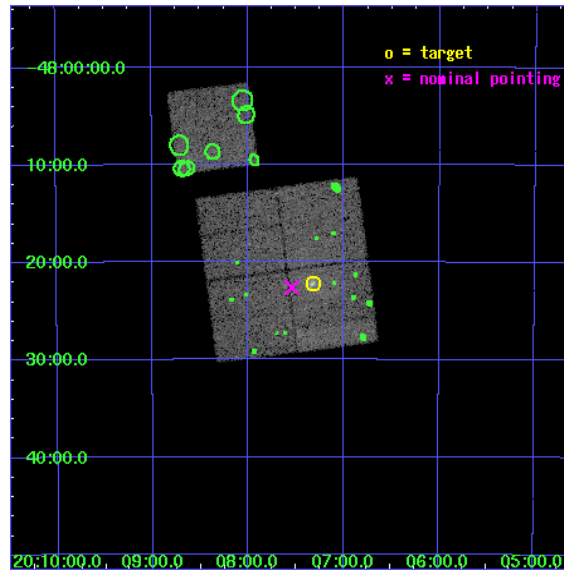
L2 Processing Date : Sep 26 2006

Contents

1	Front	2
2	OBI	3
2.1	OBI	3
2.1.1	Images	3
2.1.2	Bias	3
2.1.3	Parameters	4
2.1.4	Events	4
2.2	Compared Parameters	5
2.3	Aspect	6
2.4	Star Slots	9
2.4.1	Slot 3	9
2.4.2	Slot 4	10
2.4.3	Slot 5	11
2.4.4	Slot 6	12
2.4.5	Slot 7	13
2.5	FID Slots	14
2.5.1	Slot 0	14
2.5.2	Slot 1	15
2.5.3	Slot 2	16
3	Point Sources	17
A	Summary	18
A.1	Status	18
A.2	Comments	18

1 Front

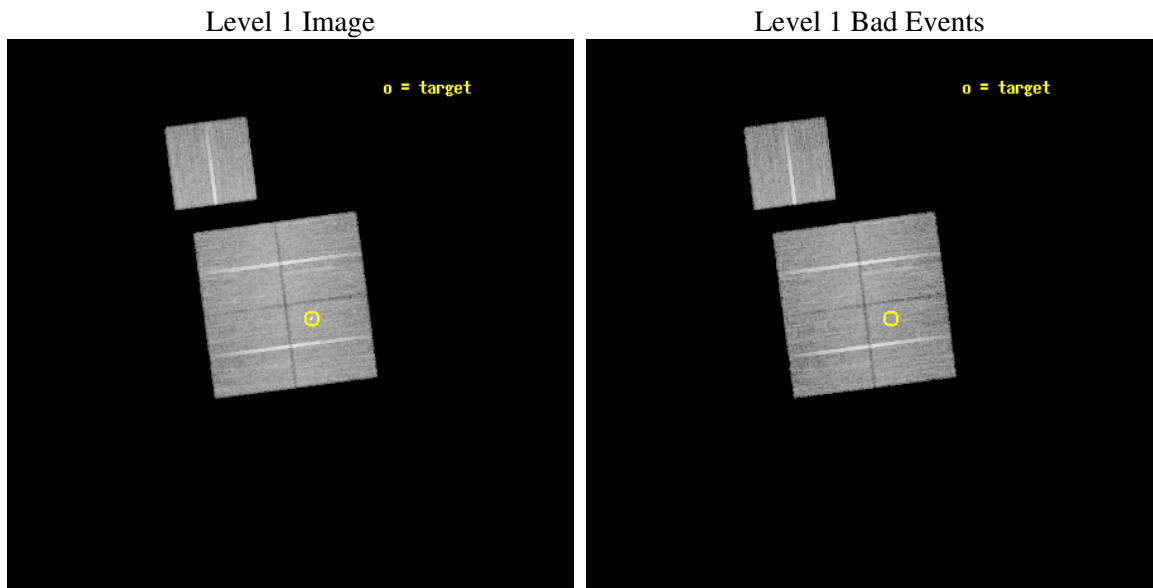
seq_num	800190
obs_id	3190
title	COLLIDING GROUPS
observer	Dr. Stephen Murray
object	NGC6861
dtcycle	0
cycle	P
ra_targ	301.829583
dec_targ	-48.37
ra_nom	301.88533744818
dec_nom	-48.376815680471
roll_nom	352.55946927467
revision	2
ontime	23113.517985225
livetime	22811.522856823
ontime0	23113.517995059
ontime1	23113.517985225
ontime2	23110.377034873
ontime3	23110.377024859
ontime6	23116.658995271
l2events	75847



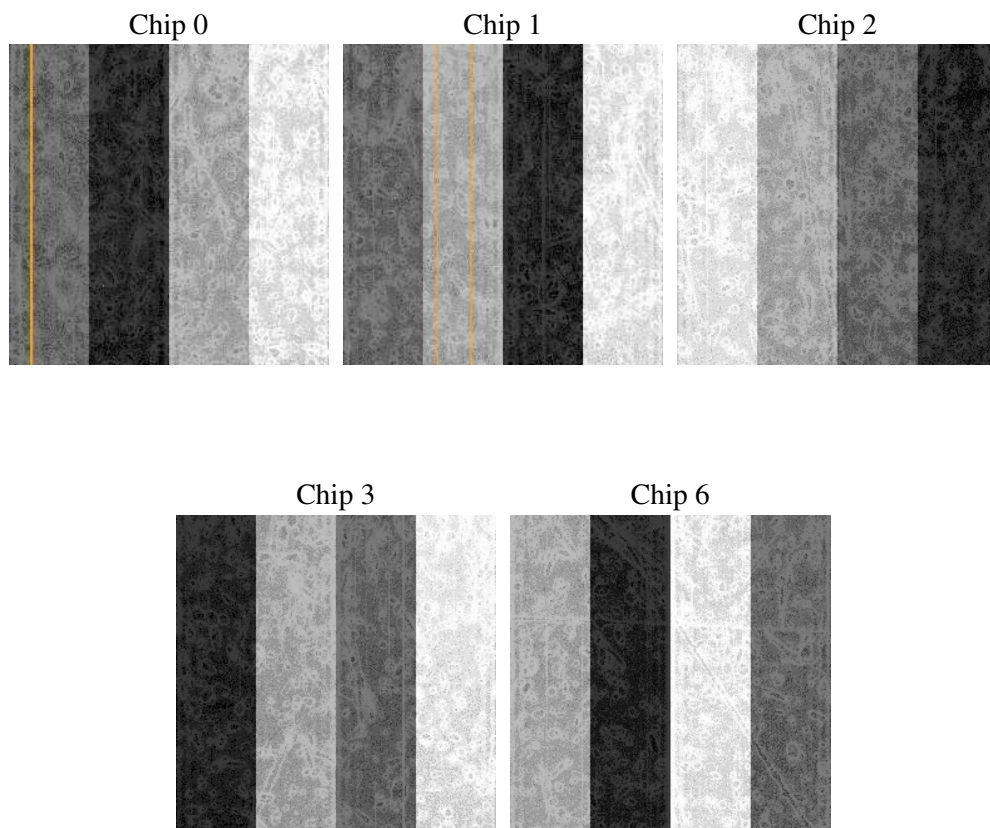
2 OBI

2.1 OBI

2.1.1 Images



2.1.2 Bias



2.1.3 Parameters

obi_num	0
ascdsver	7.6.9
caldbver	3.2.3
date	2006-09-26T14:40:53
revision	2

sched_exp_time	23000.000000
ontime	23117.812630802
ontime0	23117.812640637
ontime1	23117.812630802
ontime2	23114.67168045
ontime3	23114.671670437
ontime6	23120.953640848
llevents	654015

2.1.4 Events

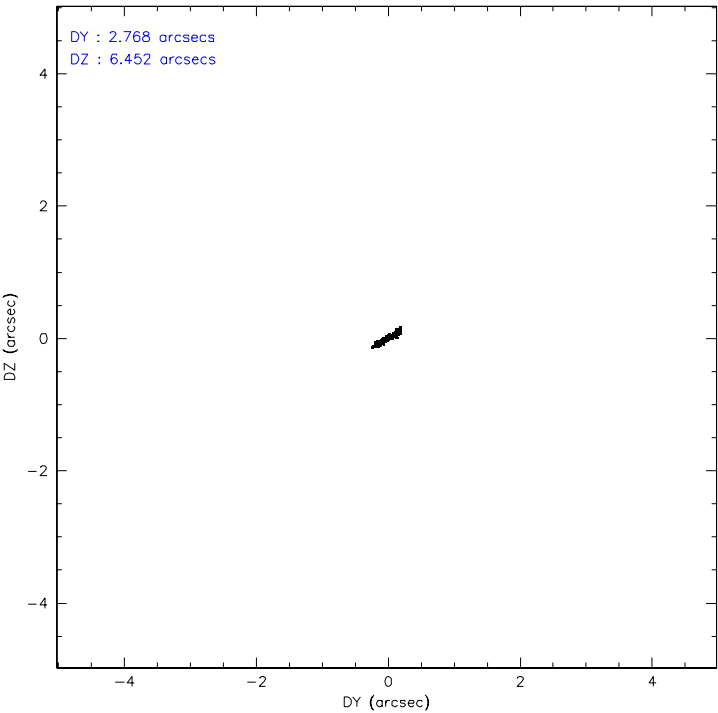
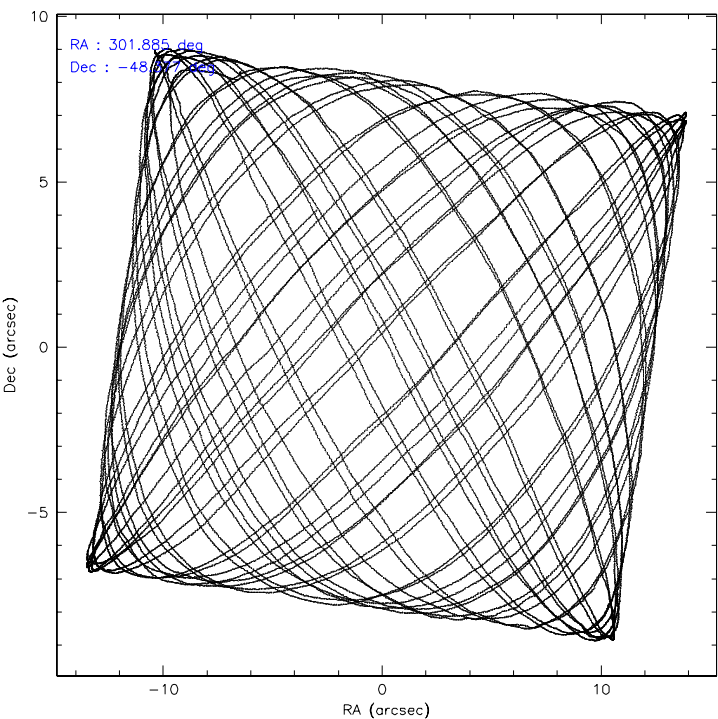
	ccd 0	ccd 1	ccd 2	ccd 3	ccd 6
level 1 events	121269	128498	138744	133476	132028
rejected events	103857	106631	120998	116498	115185
rejected %	85%	82%	87%	87%	87%

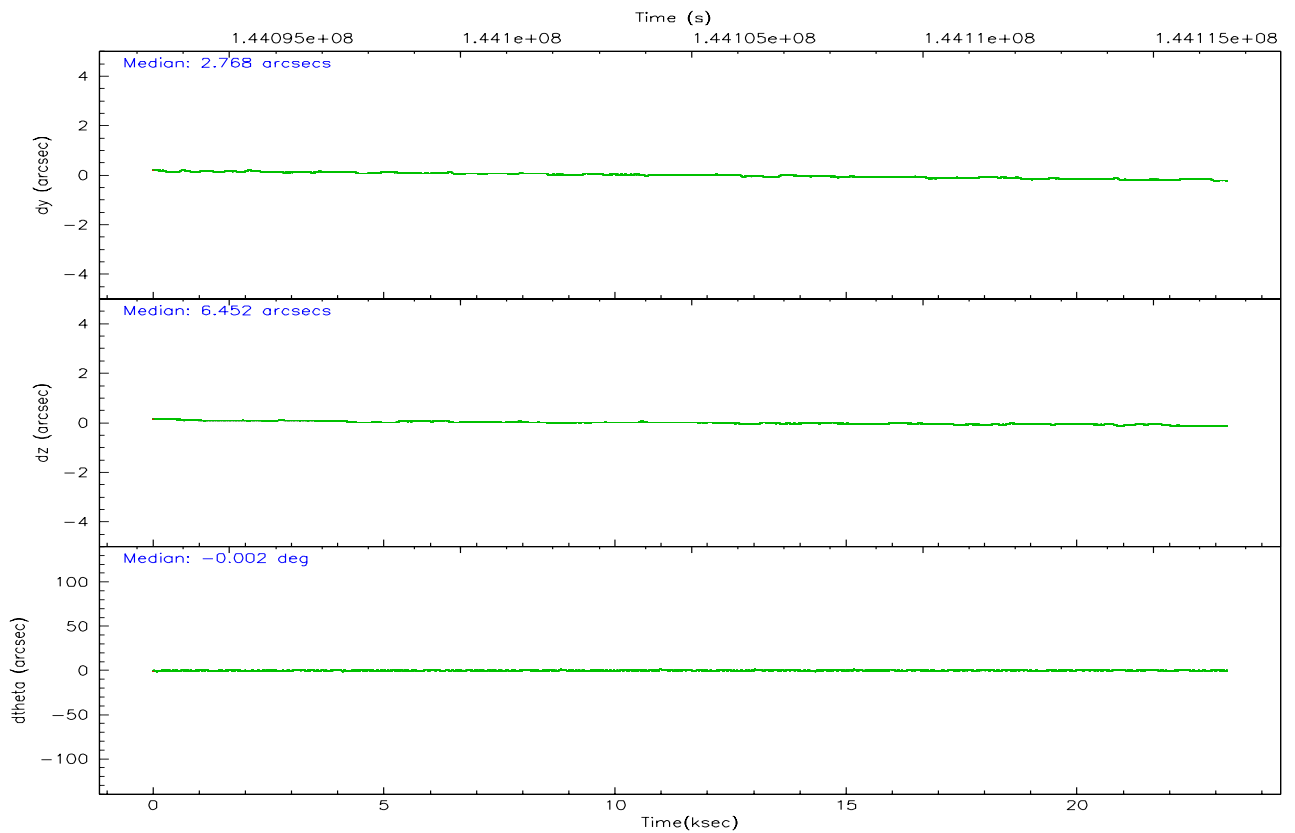
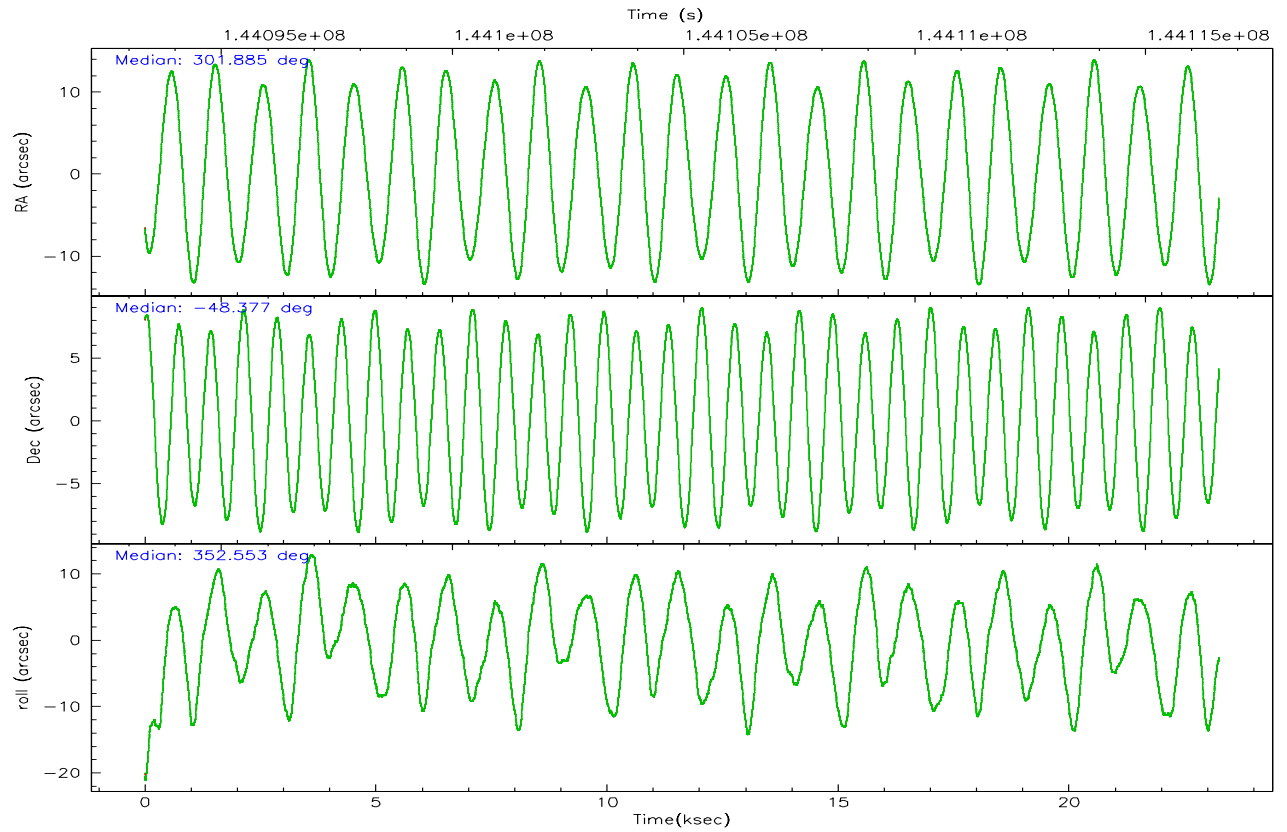
	ccd 0	ccd 1	ccd 2	ccd 3	ccd 6
grade 0 events	7139	10608	7662	7469	6547
	5%	8%	5%	5%	4%
grade 1 events	68	82	56	66	44
	0%	0%	0%	0%	0%
grade 2 events	3785	3938	3857	3294	3510
	3%	3%	2%	2%	2%
grade 3 events	1653	1891	1443	1530	1583
	1%	1%	1%	1%	1%
grade 4 events	1553	1794	1580	1503	1528
	1%	1%	1%	1%	1%
grade 5 events	3877	4306	3689	4352	4335
	3%	3%	2%	3%	3%
grade 6 events	3286	3637	3210	3187	3682
	2%	2%	2%	2%	2%
grade 7 events	99908	102242	117247	112075	110799
	82%	79%	84%	83%	83%

2.2 Compared Parameters

Parameter	Planned	Actual	Parameter	Planned	Actual
Instrument	ACIS	ACIS	Obspar format version number	6	6
Detector	ACIS-01236	ACIS-01236	Obspar file type	PREDICTED	ACTUAL
Grating	NONE	NONE	Obspar update status	NONE	UPDATED
Data mode	VFAINT	VFAINT	Number of optional ACIS chips dropped	0	0
Observation mode	POINTING	POINTING	On-chip summing requested	N	N
Pointing RA	301.847319	301.8853374481795	Subarray requested	NONE	NONE
Pointing Dec	-48.387387	-48.37681568047065	Alternating exposures requested	N	N
Pointing Roll	352.322357	352.5594692746718	Primary exposure time	0.000000	3.1
SIM focus pos (mm)	-0.782348	-0.7809083437167272			
SIM defocus (mm)	0	0.001439871863259334			
SIM translation stage pos (mm)	-240.592463	-240.5872882603717			
SIM translation stage offset (mm)	7	6.994835257442048			
Observation start time	144093594.184000	144092608.98779			
Observation start date	2002-07-26T17:58:50	2002-07-26T17:43:28			
Observation end time	144116594.184000	144117334.55131			
Observation end date	2002-07-27T00:22:10	2002-07-27T00:35:34			
Read mode	TIMED	TIMED			

2.3 Aspect



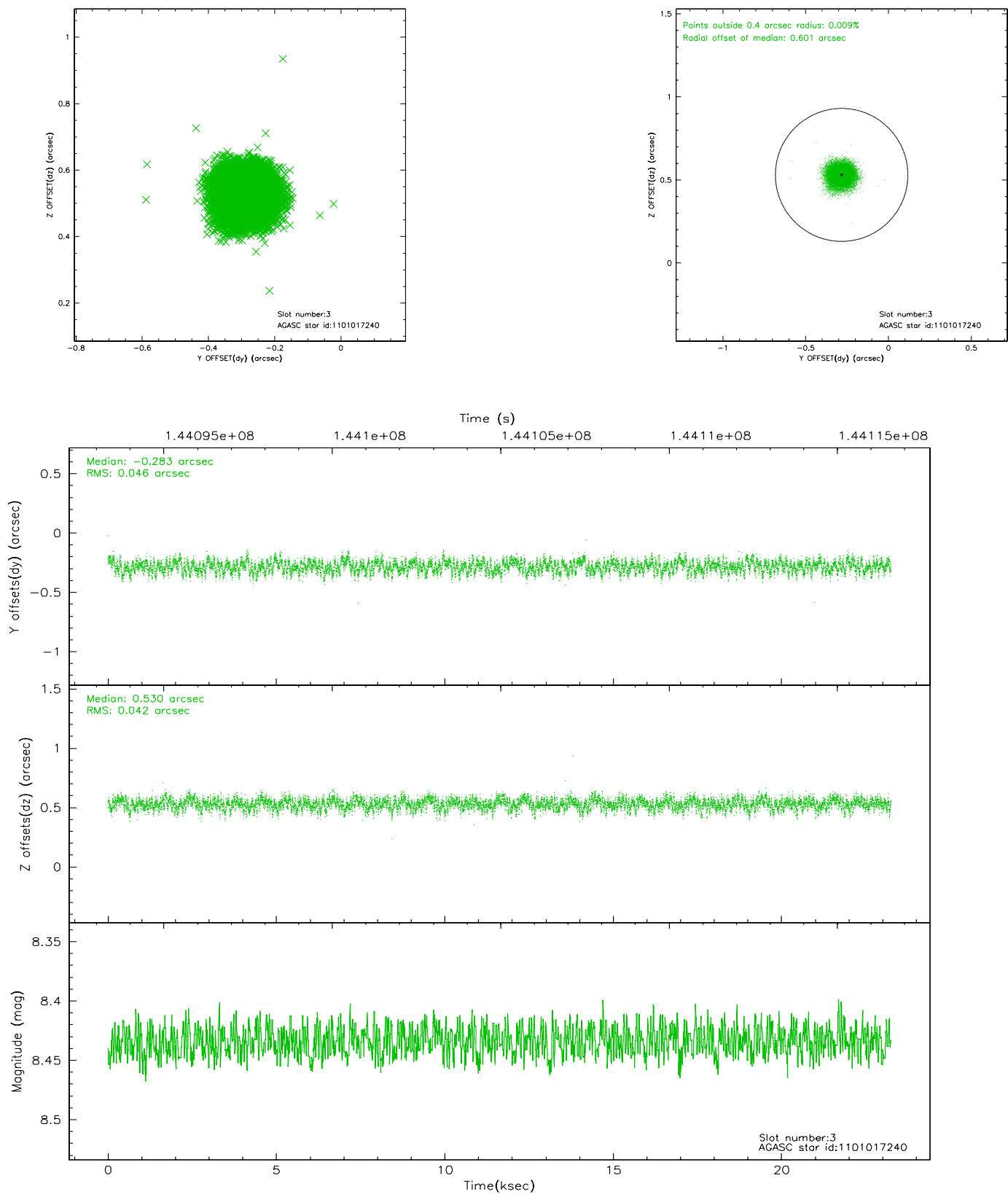


Slot Statistics

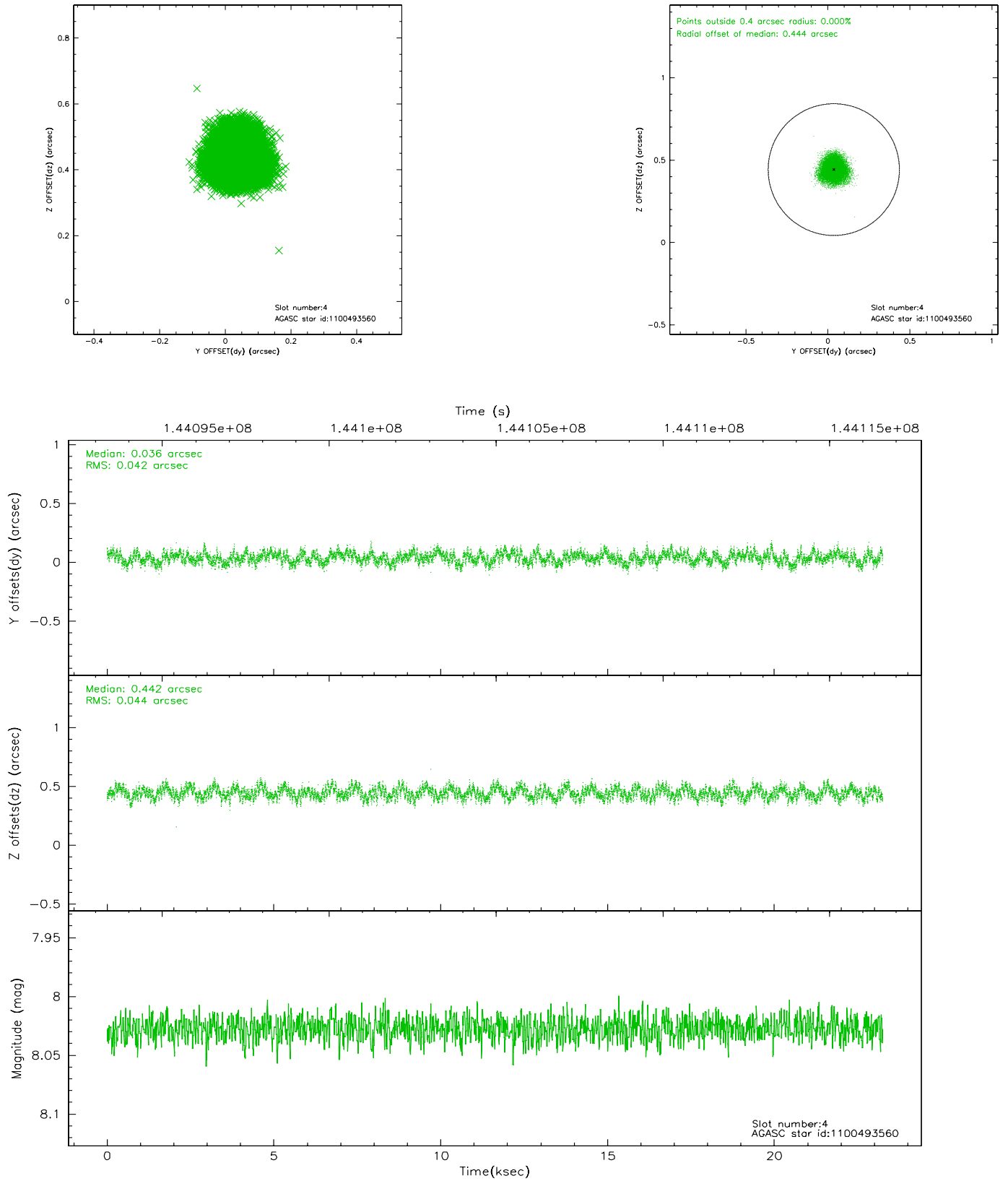
slot	status	id	mag	n_pts	med_dy	med_dz	dr1	dr2	ra	dec	mean_y	mean_z
0	FID	ACIS-I-1	7.28	5670	-0.058	0.076	0.007	0.012	0.000000	0.000000	937.11	-685.96
1	FID	ACIS-I-5	7.24	5670	-0.033	0.004	0.007	0.012	0.000000	0.000000	-1810.90	1211.40
2	FID	ACIS-I-6	7.25	5670	0.000	-0.010	0.007	0.011	0.000000	0.000000	402.56	1856.05
3	GUIDE	1101017240	8.43	11339	-0.283	0.530	0.067	0.105	301.056519	-48.786840	-1664.72	-1685.22
4	GUIDE	1100493560	8.03	11340	0.036	0.442	0.066	0.101	301.193860	-48.160726	-1662.51	592.41
5	GUIDE	1100497552	9.25	11317	0.104	-0.112	0.096	0.167	302.848311	-48.379409	2370.99	332.87
6	GUIDE	1100888904	8.88	11332	0.291	-0.858	0.077	0.124	300.761834	-48.893333	-2298.80	-2167.57
7	GUIDE	1101018712	9.44	11331	-0.142	-0.005	0.104	0.166	302.763008	-48.818100	2360.67	-1259.59

2.4 Star Slots

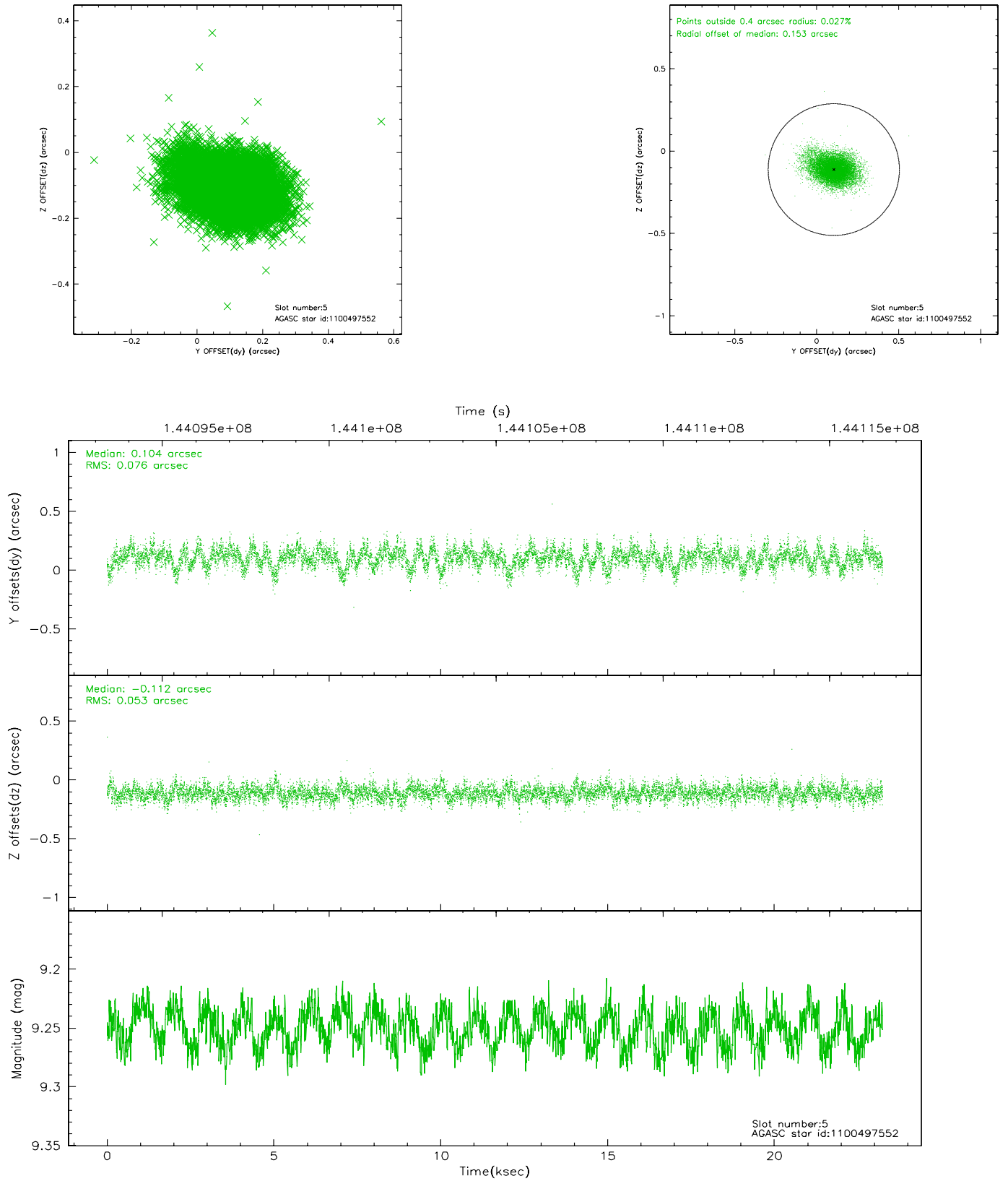
2.4.1 Slot 3



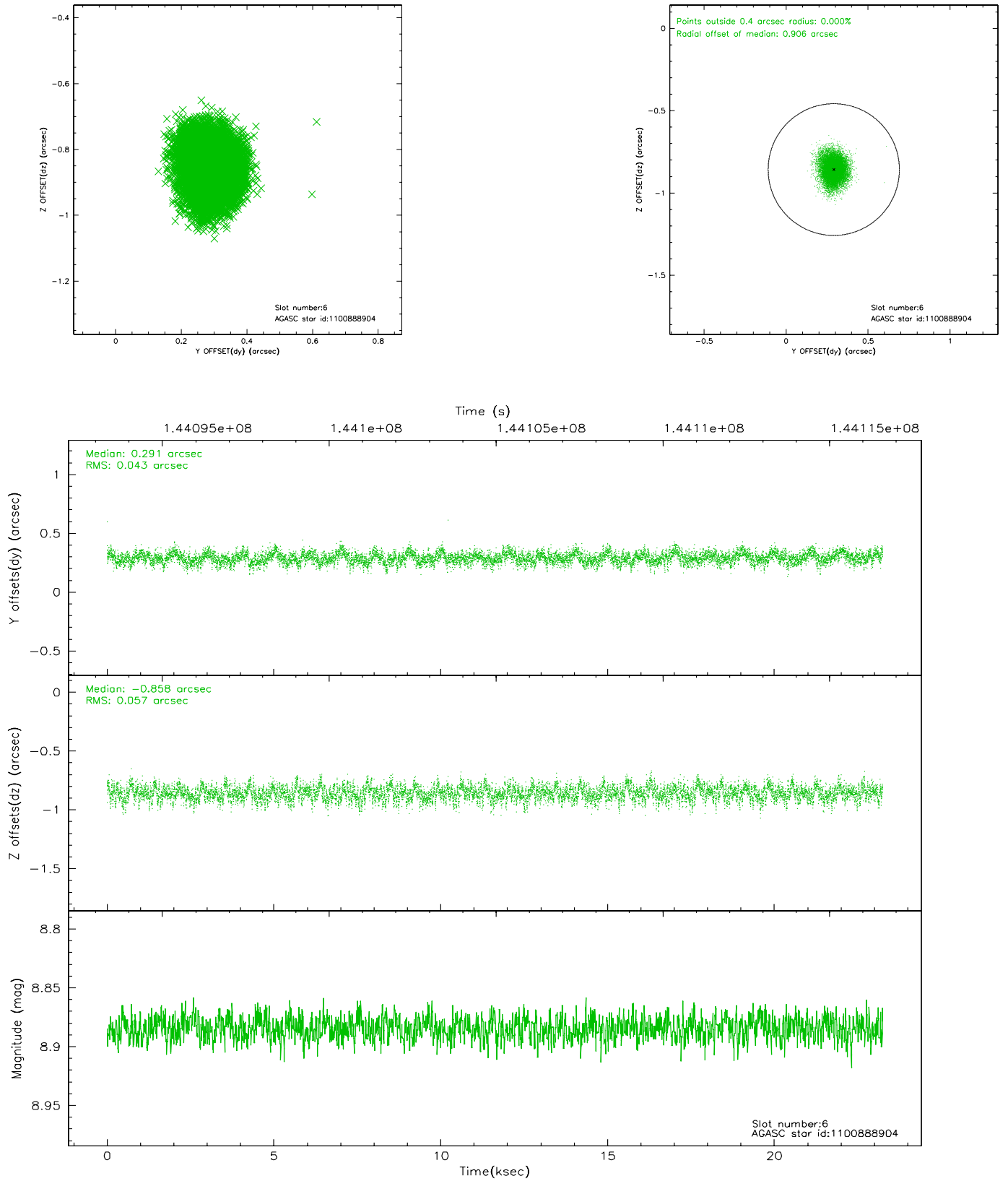
2.4.2 Slot 4



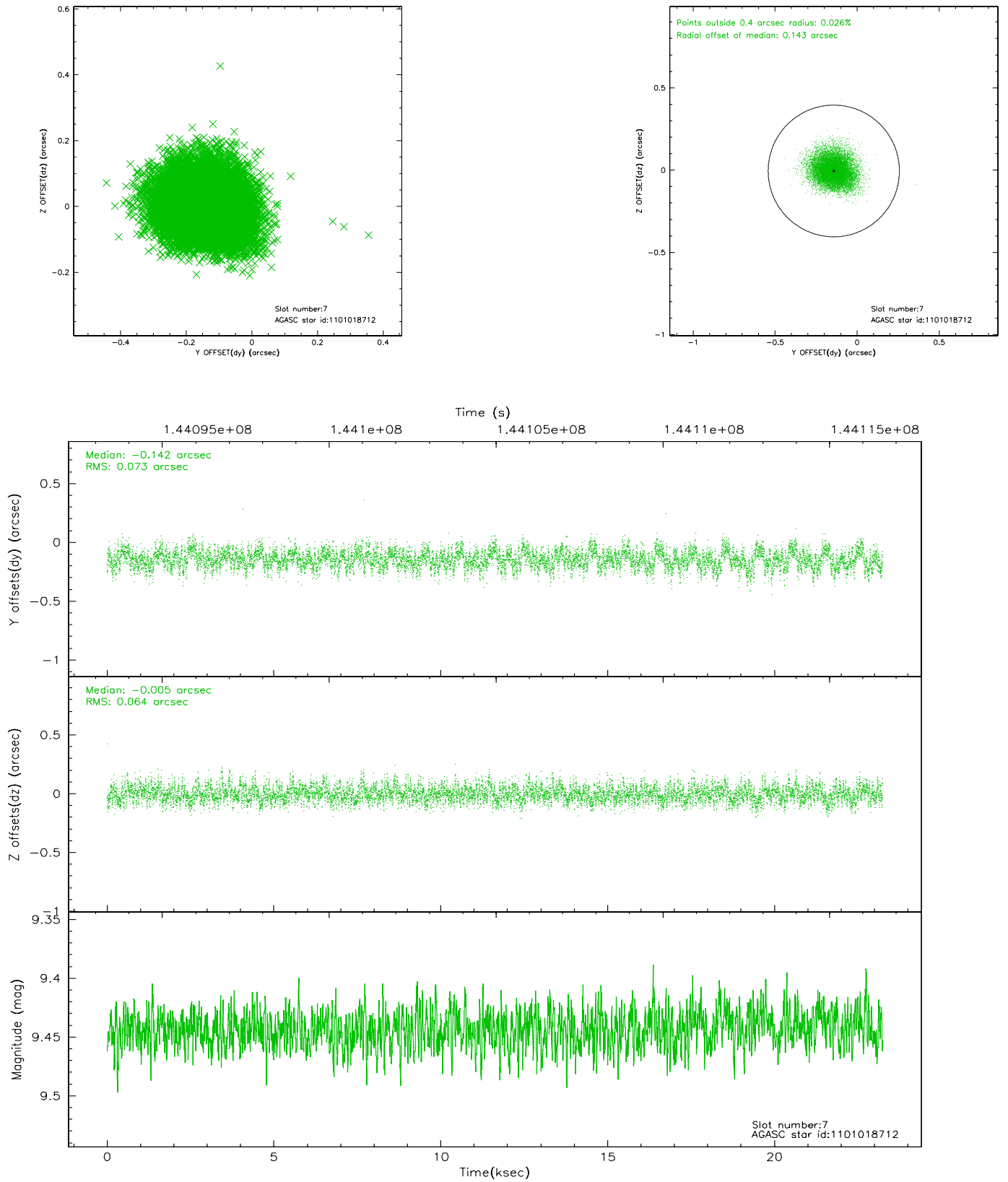
2.4.3 Slot 5



2.4.4 Slot 6

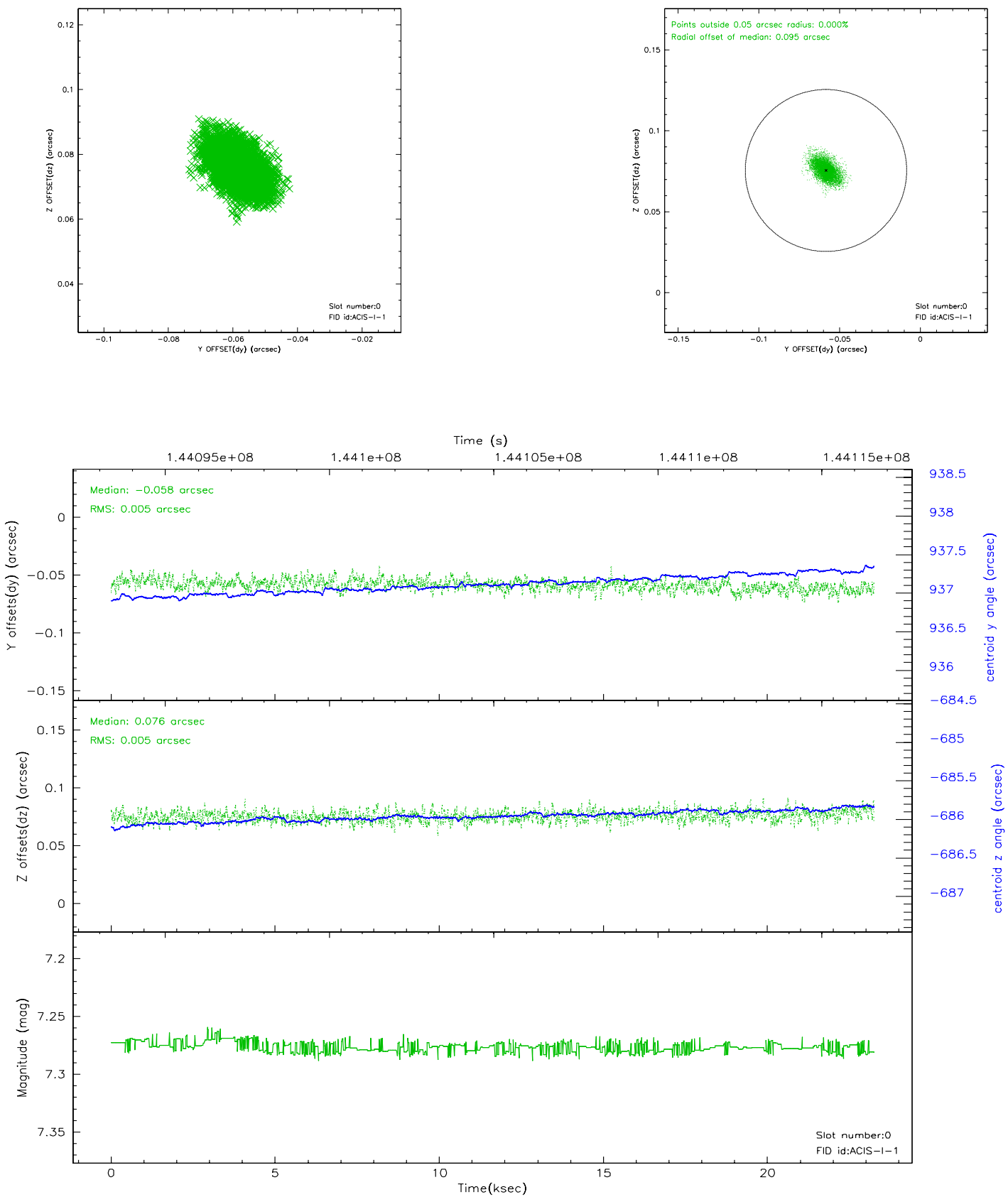


2.4.5 Slot 7

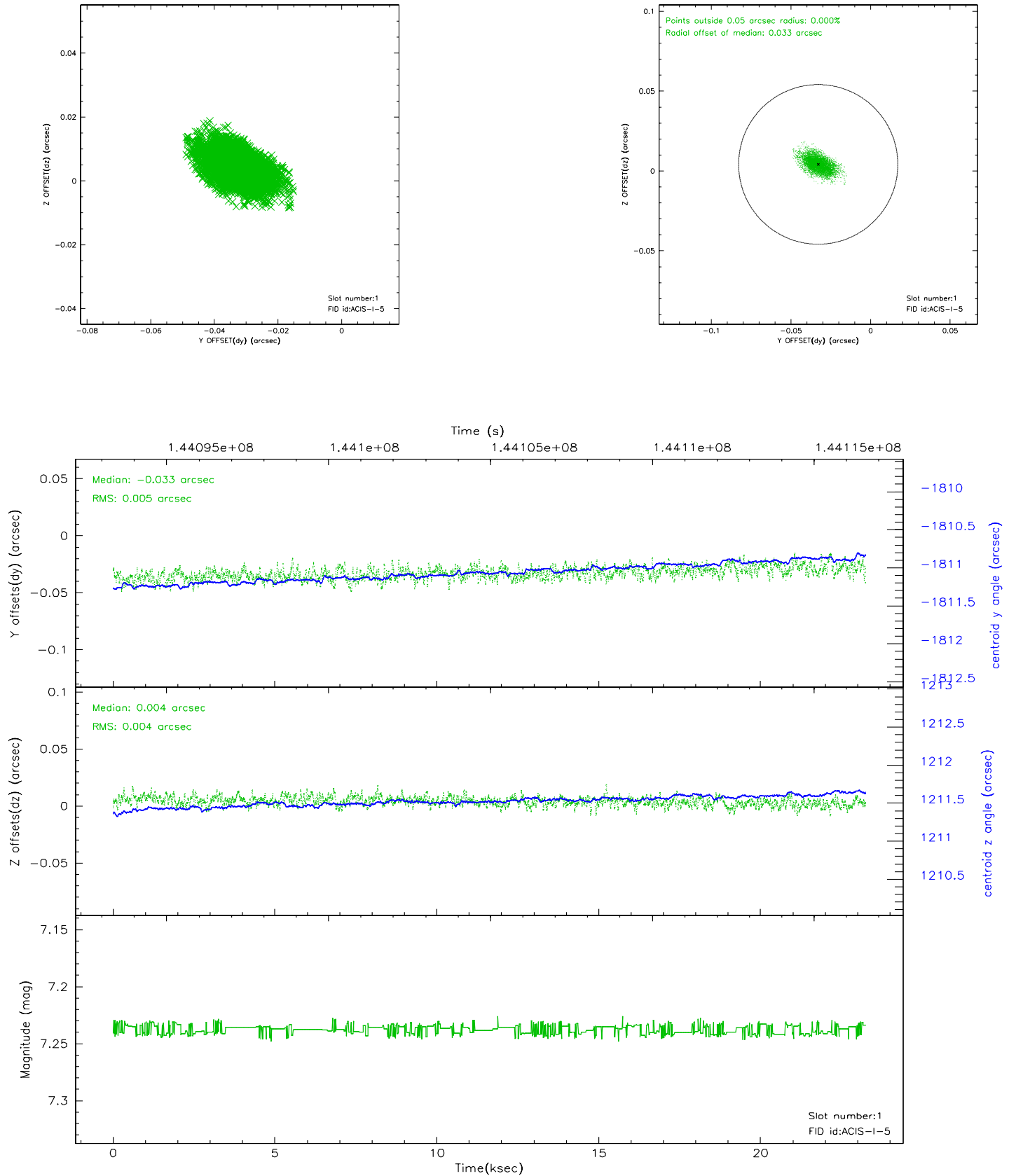


2.5 FID Slots

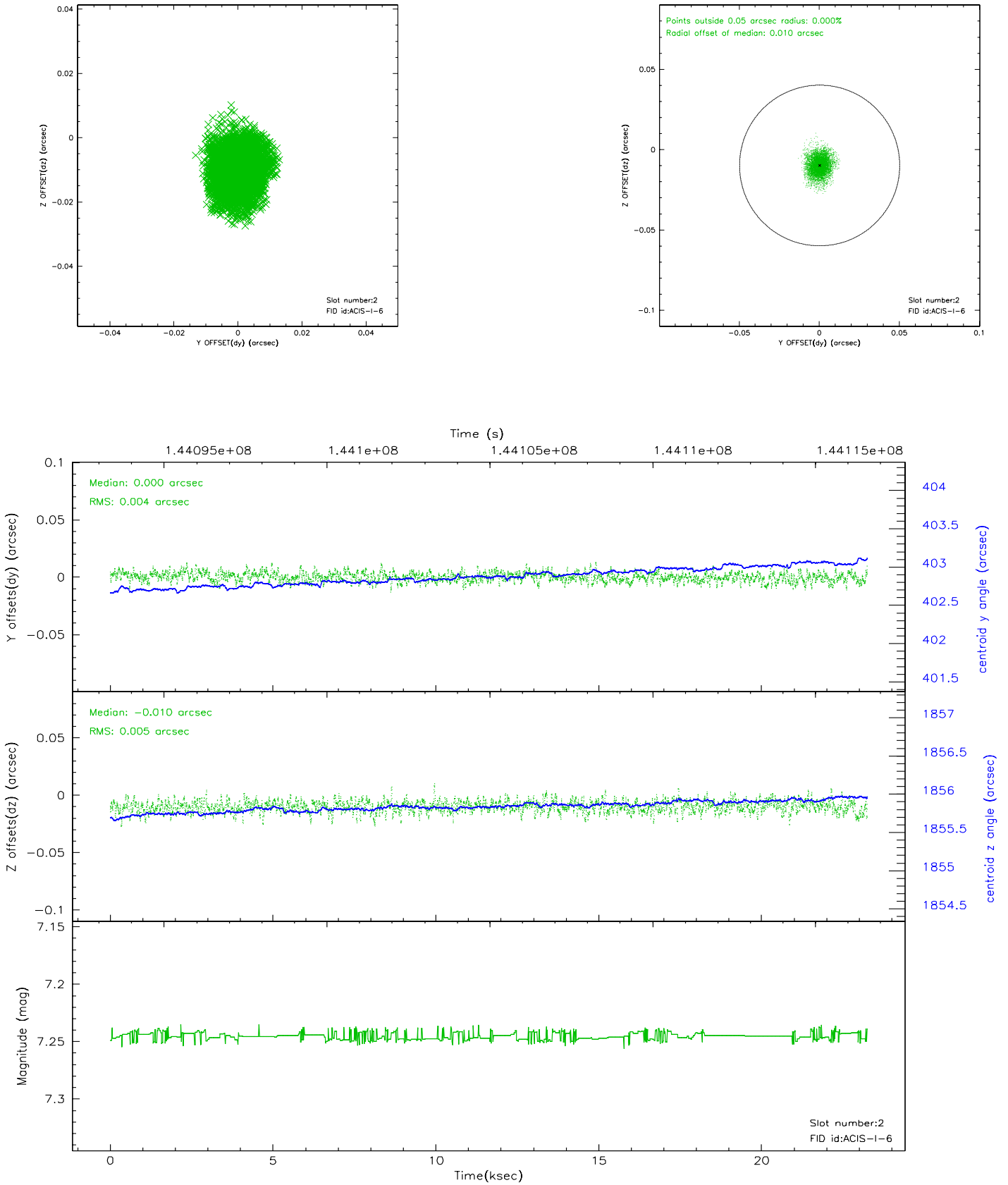
2.5.1 Slot 0



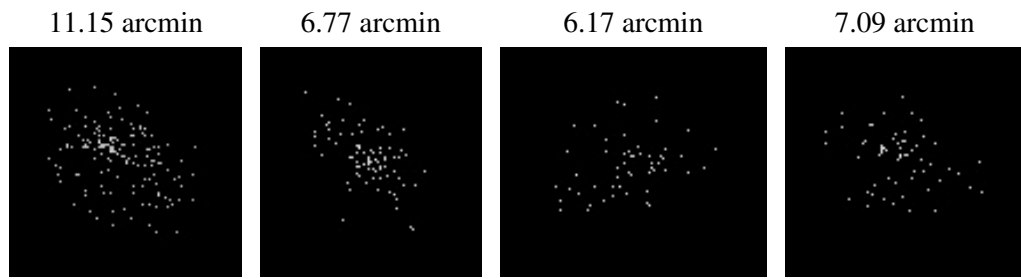
2.5.2 Slot 1



2.5.3 Slot 2



3 Point Sources



A Summary

A.1 Status

V&V Scientist	Beth Sundheim
V&V Date (YYYY-MM-DD)	2006.09.26
V&V Edition	1
V&V Disposition and Status	OK
V&V Charge Time	23.113

A.2 Comments