

V&V Reference Report

L2 ASCDS Version : 8.4.5

Observation 3189 - L2 Version 3
Chandra X-Ray Center

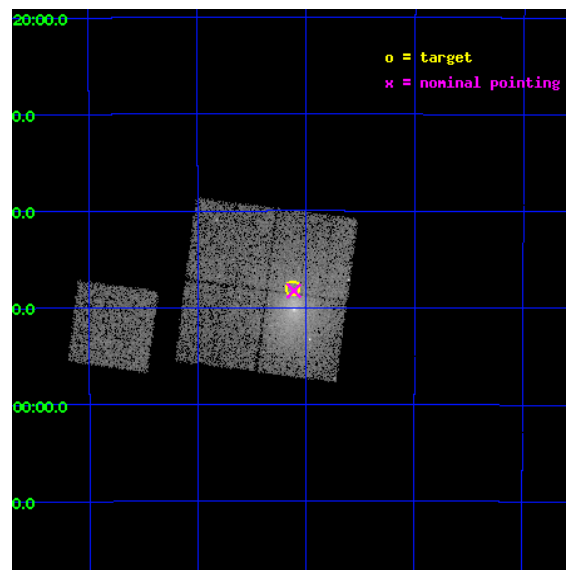
L2 Processing Date : Oct 3 2012

Contents

1	Front	2
2	OBI	3
2.1	OBI	3
2.1.1	Images	3
2.1.2	Bias	3
2.1.3	Parameters	4
2.1.4	Events	4
2.2	Compared Parameters	5
2.3	Aspect	6
2.4	Star Slots	9
2.4.1	Slot 3	9
2.4.2	Slot 5	10
2.4.3	Slot 6	11
2.4.4	Slot 7	12
2.5	FID Slots	13
2.5.1	Slot 0	13
2.5.2	Slot 1	14
2.5.3	Slot 2	15
A	Summary	16
A.1	Status	16
A.2	Comments	16

1 Front

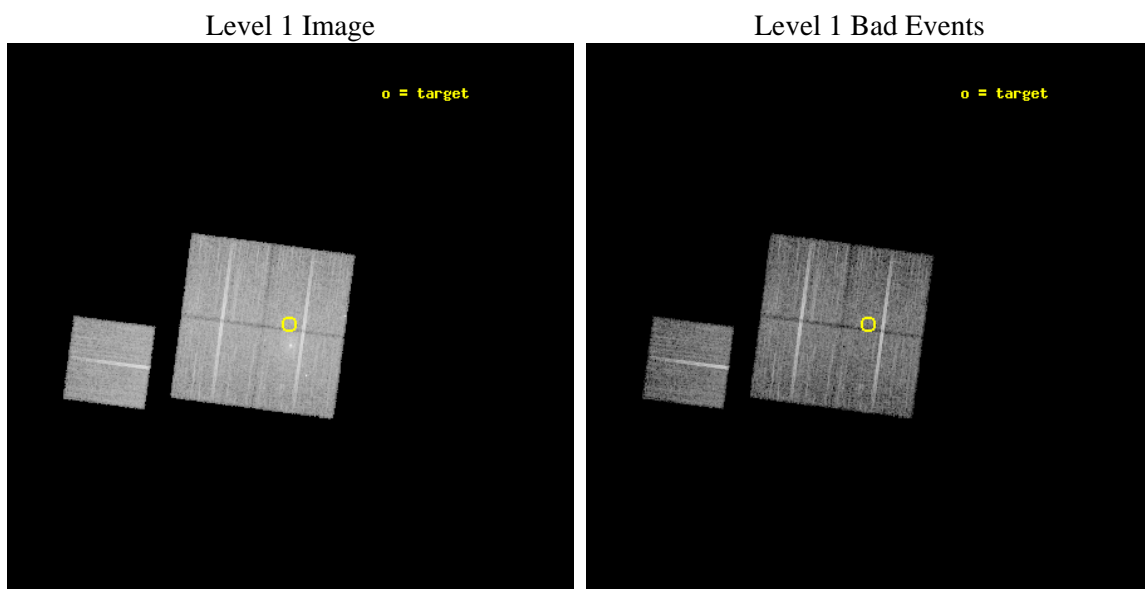
seq_num	800189	Sequence number
obs_id	3189	Observation id
title	OLEGS OR FOSSIL GROUPS -- STUDYING EVOLVED GALAXY SYSTEMS	Proposal
observer	Dr. Stephen Murray	Principal investigator
object	ESO3060170-A	Source name
dtcycle	0	
cycle	P	events from which exps? Prim/Second/Both
ra_targ	85.03	Observer's specified target RA [deg]
dec_targ	-40.8	Observer's specified target Dec [deg]
ra_nom	85.028325113501	Nominal RA [deg]
dec_nom	-40.804504961963	Nominal Dec [deg]
roll_nom	277.49451086376	Nominal Roll [deg]
revision	3	Processing version of data
ontime	14247.480979532	Sum of GTIs [s]
livetime	14061.327151692	Livetime [s]
ontime0	14247.439979464	Sum of GTIs [s]
ontime1	14247.480979532	Sum of GTIs [s]
ontime2	14244.381119117	Sum of GTIs [s]
ontime3	14250.6999726	Sum of GTIs [s]
ontime6	14250.539919615	Sum of GTIs [s]
l2events	55147	Number of level 2 events



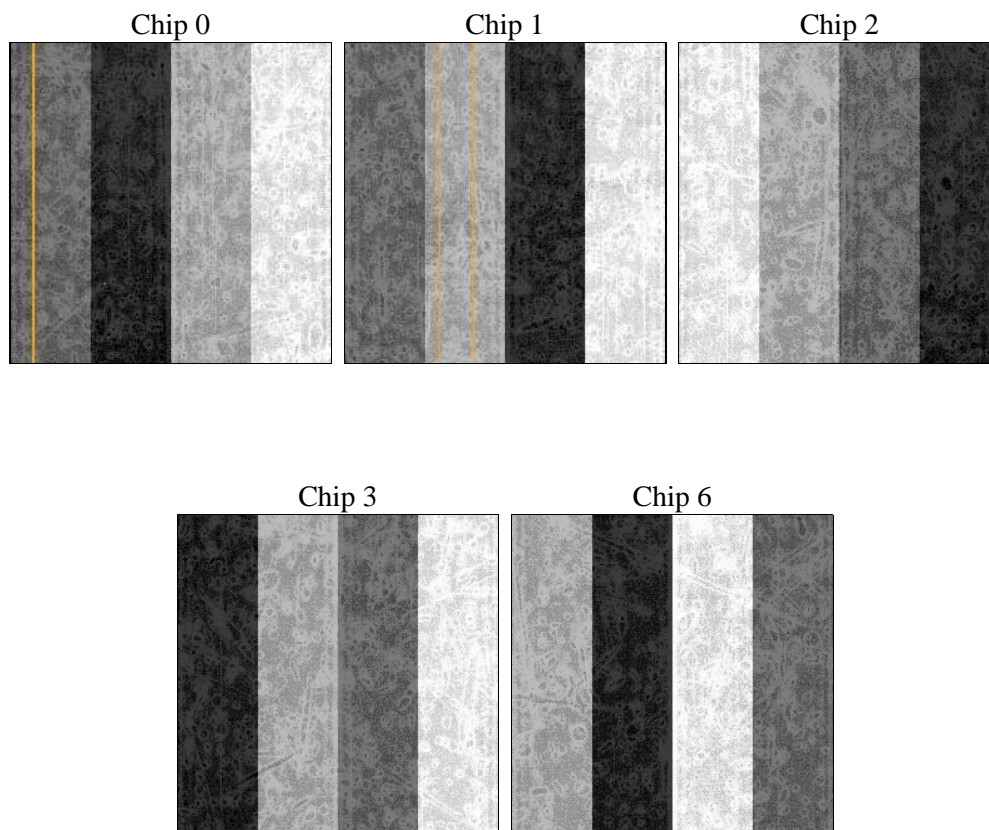
2 OBI

2.1 OBI

2.1.1 Images



2.1.2 Bias



2.1.3 Parameters

obi_num	1	Obi number	sched_exp_time	14477.073000	[s] Scheduled observation exposure time
ascdsver	8.4.5	Processing system revision	ontime	14247.480979532	Sum of GTIs [s]
caldsver	4.5.2	 	ontime0	14247.439979464	Sum of GTIs [s]
date	2012-10-03T03:48:52	Date and time of file creation	ontime1	14247.480979532	Sum of GTIs [s]
revision	3	Processing version of data	ontime2	14244.381119117	Sum of GTIs [s]
			ontime3	14250.6999726	Sum of GTIs [s]
			ontime6	14250.539919615	Sum of GTIs [s]
			l1events	433769	Number of level 1 events

2.1.4 Events

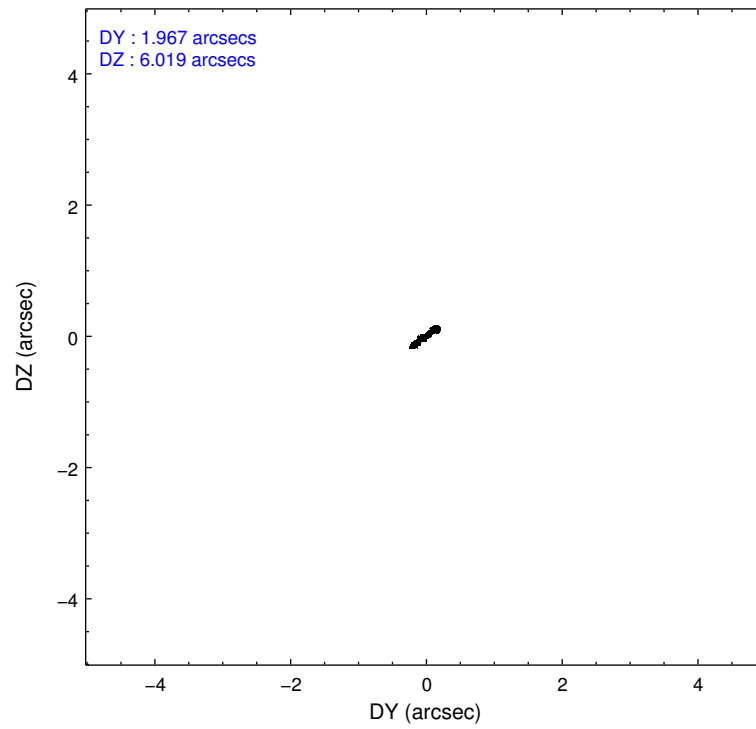
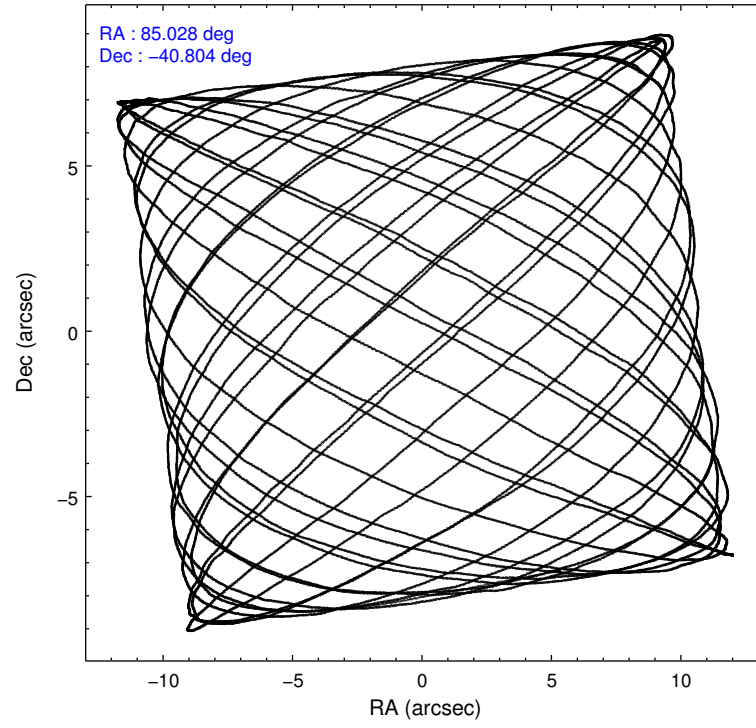
	ccd 0	ccd 1	ccd 2	ccd 3	ccd 6
level 1 events	94475	82422	86727	88528	81617
rejected events	70285	68660	77659	79816	73341
rejected %	74%	83%	89%	90%	89%

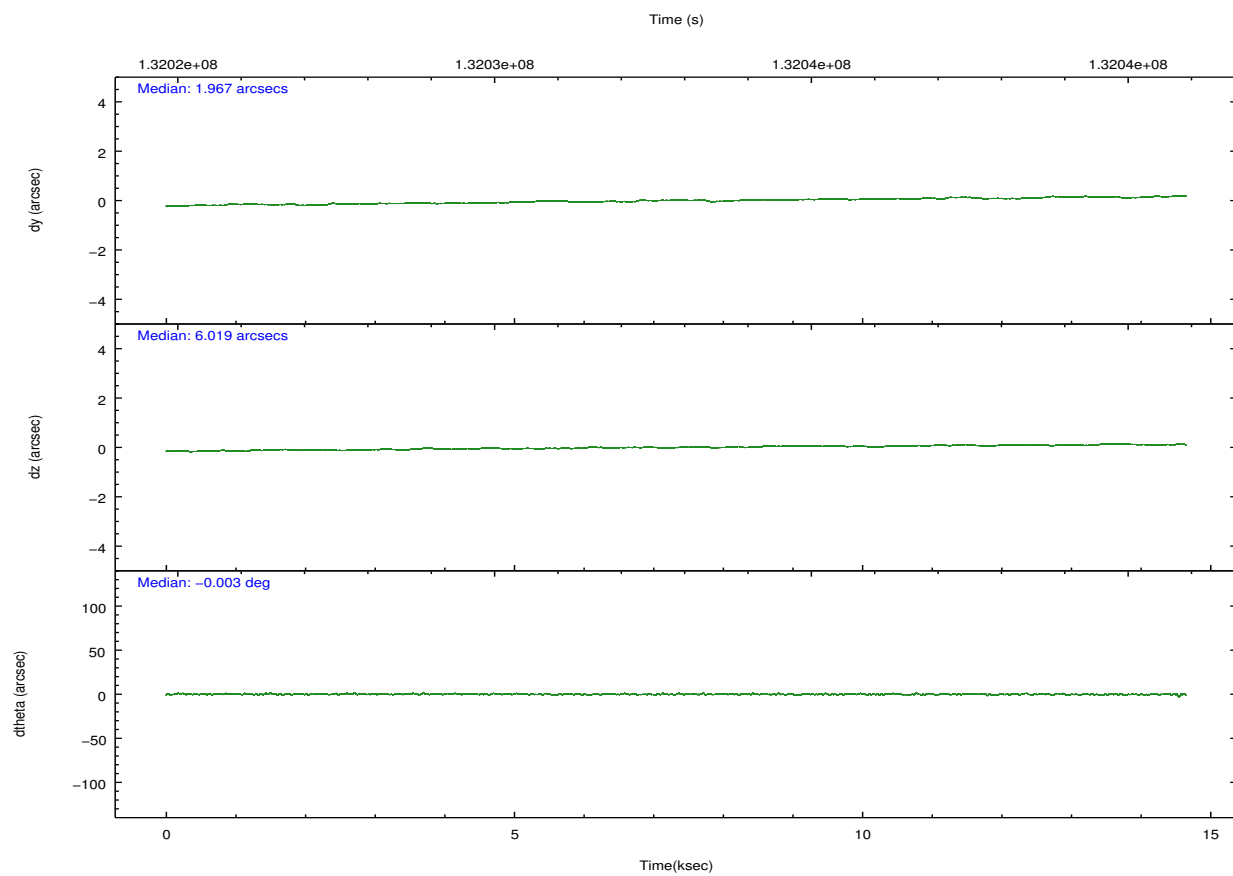
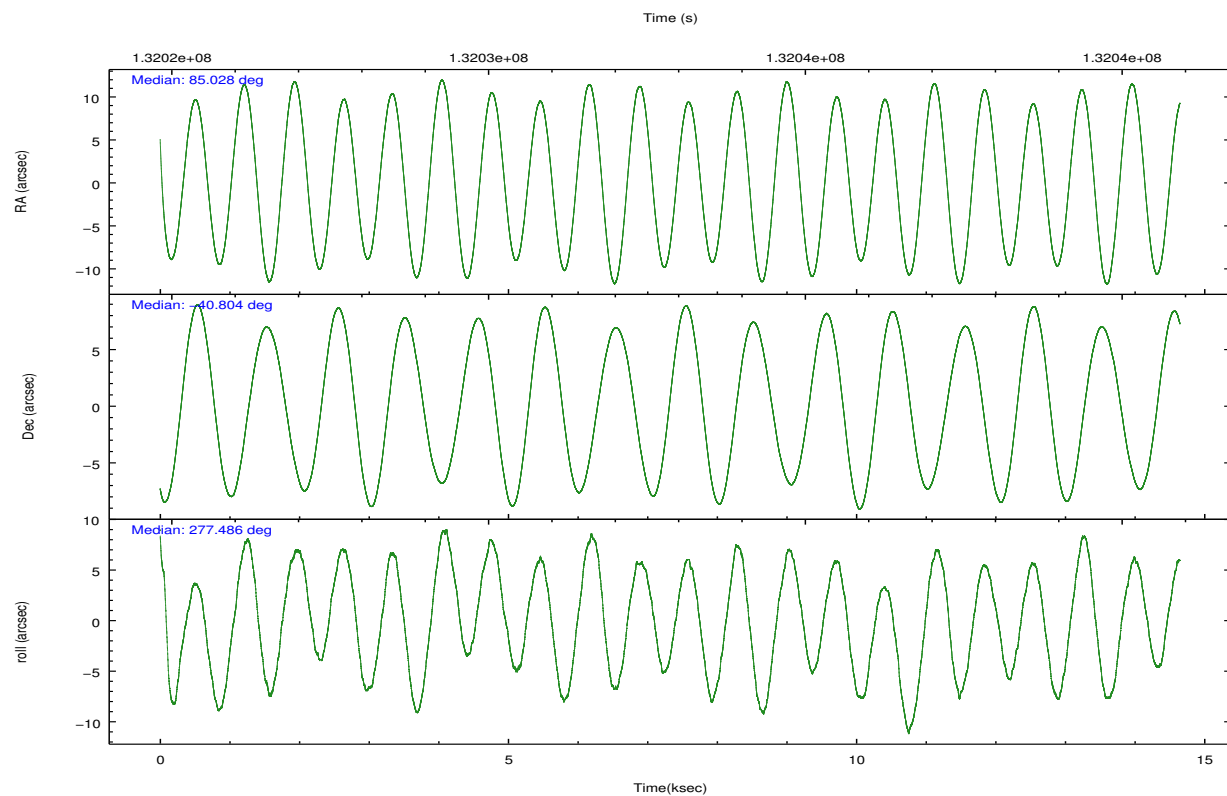
	ccd 0	ccd 1	ccd 2	ccd 3	ccd 6
grade 0 events	16360	7243	3853	3709	3062
	17%	8%	4%	4%	3%
grade 1 events	116	68	36	56	36
	0%	0%	0%	0%	0%
grade 2 events	3258	2345	1966	1706	1707
	3%	2%	2%	1%	2%
grade 3 events	1414	1180	893	907	930
	1%	1%	1%	1%	1%
grade 4 events	1306	1121	914	879	914
	1%	1%	1%	0%	1%
grade 5 events	2618	2762	2363	2789	3017
	2%	3%	2%	3%	3%
grade 6 events	1862	1875	1442	1512	1665
	1%	2%	1%	1%	2%
grade 7 events	67541	65828	75260	76970	70286
	71%	79%	86%	86%	86%

2.2 Compared Parameters

Parameter	Planned	Actual	Parameter	Planned	Actual
Instrument	ACIS	ACIS	Obspar format version number	7	7
Detector	ACIS-01236	ACIS-01236	Obspar file type	PREDICTED	ACTUAL
Grating	NONE	NONE	Obspar update status	NONE	UPDATED
Data mode	VFAINT	VFAINT	Number of optional ACIS chips dropped	0	0
Observation mode	POINTING	POINTING	On-chip summing requested	N	N
[deg] Pointing RA	85.006233	85.02832511350083	Subarray requested	NONE	NONE
[deg] Pointing Dec	-40.782807	-40.80450496196329	Alternating exposures requested	N	N
[deg] Pointing Roll	277.271397	277.4945108637613	[s] Primary exposure time	0.000000	3.1
[mm] SIM focus pos	-0.782348	-0.7809083437167272			
[mm] SIM defocus	0	0.001439871863259334			
[mm] SIM translation stage pos	-243.592463	-243.5843520998312			
[mm] SIM translation stage offset	10	9.991899096901562			
[s] Observation start time (MET)	132025711.184000	132025346.02049			
Observation start date	2002-03-09T01:47:27	2002-03-09T01:42:26			
[s] Observation end time (MET)	132040188.184000	132040503.2086			
Observation end date	2002-03-09T05:48:44	2002-03-09T05:55:03			
Read mode	TIMED	TIMED			

2.3 Aspect



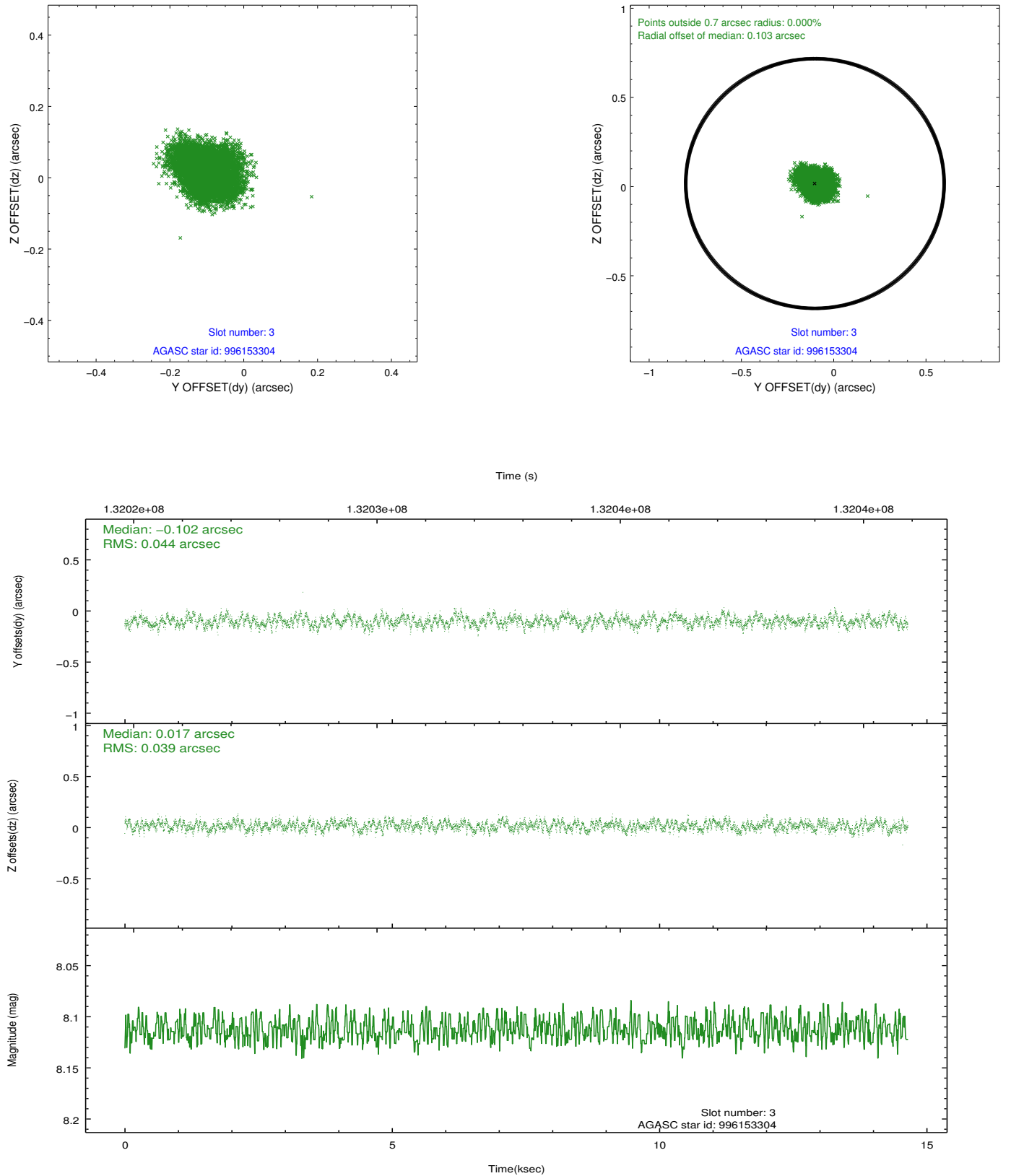


Slot Statistics

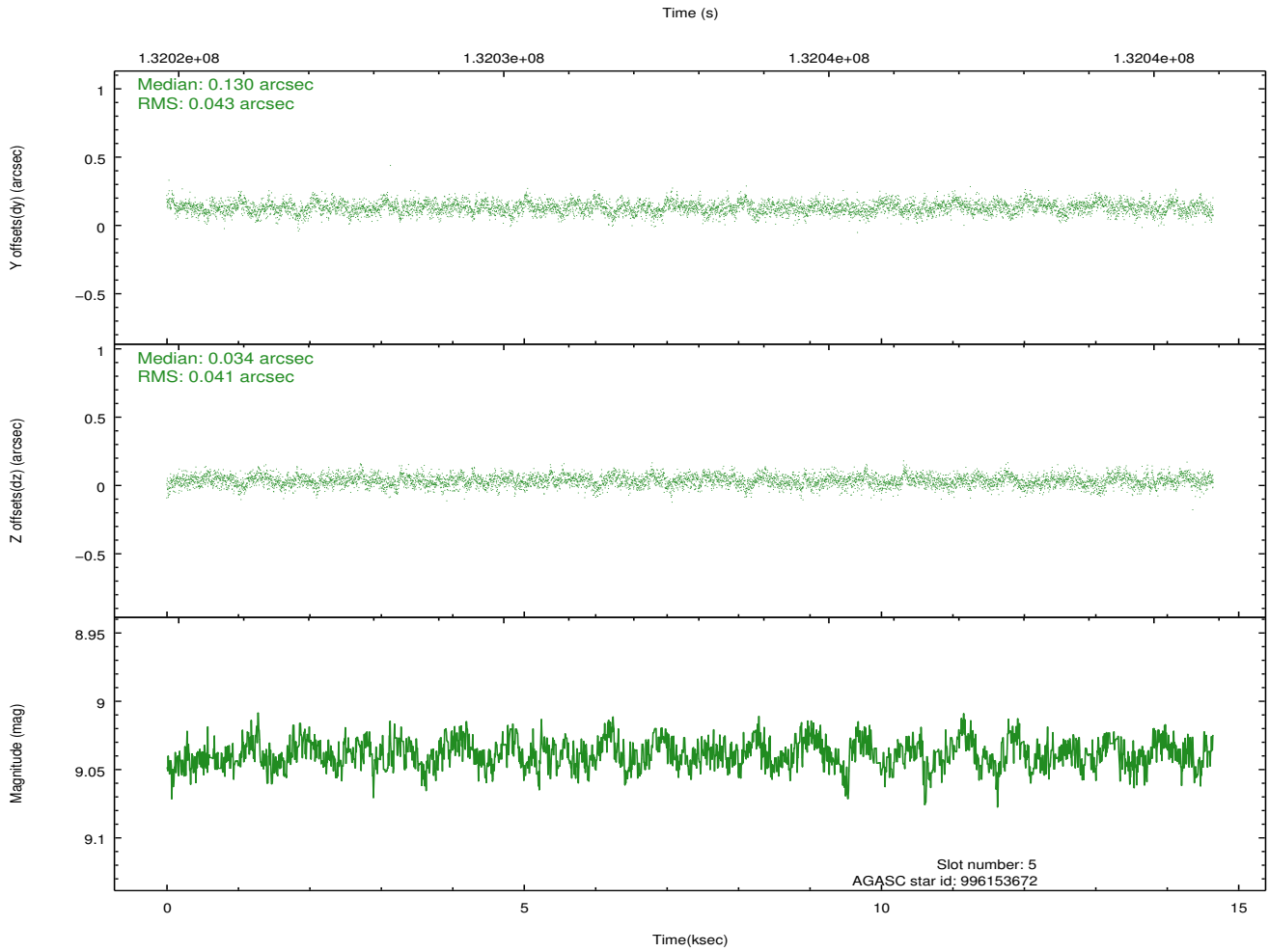
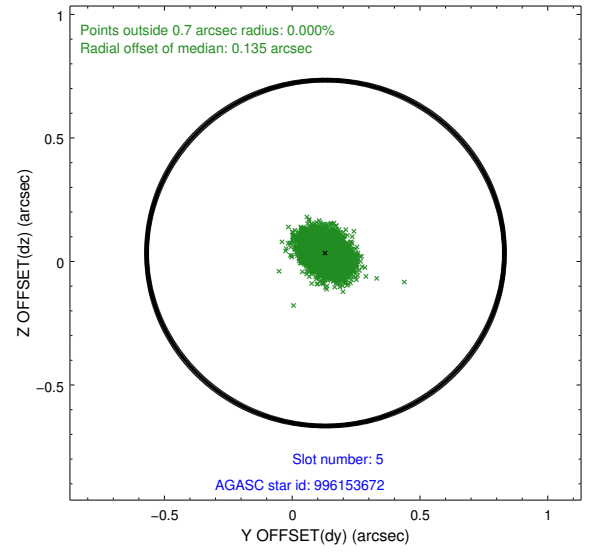
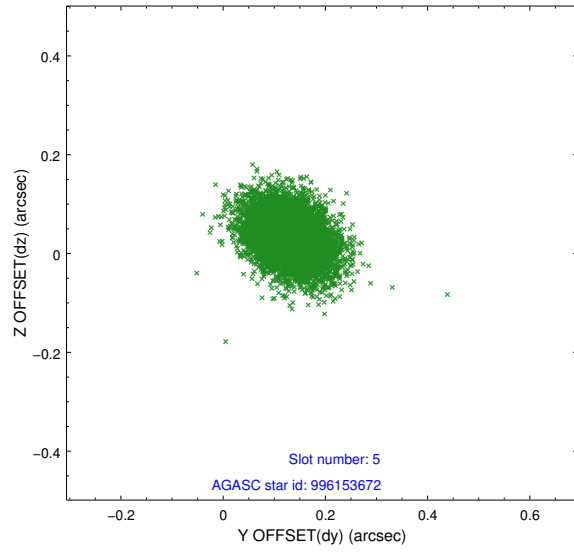
slot	status	id	mag	n_pts	med_dy	med_dz	dr1	dr2	ra	dec	mean_y	mean_z
0	FID	ACIS-I-3	7.47	3573	-0.042	0.182	0.009	0.016	0.000000	0.000000	55.45	-757.07
1	FID	ACIS-I-5	7.24	3573	-0.033	-0.015	0.007	0.013	0.000000	0.000000	-1810.19	1273.26
2	FID	ACIS-I-6	7.25	3573	-0.016	-0.098	0.009	0.014	0.000000	0.000000	403.19	1918.12
3	GUIDE	996153304	8.11	7143	-0.102	0.017	0.063	0.101	84.449102	-41.163019	1171.86	-1670.99
4	UNUSED		0.00	0	0.000	0.000	0.000	0.000	0.000000	0.000000	0.00	0.00
5	GUIDE	996153672	9.04	7142	0.130	0.034	0.062	0.105	84.845844	-41.056579	923.61	-556.26
6	GUIDE	996282616	9.15	7143	0.013	-0.007	0.112	0.182	85.789633	-40.160851	-1938.84	2420.54
7	GUIDE	996158624	10.09	7143	-0.029	-0.046	0.116	0.192	84.150888	-40.278808	-2085.60	-2101.64

2.4 Star Slots

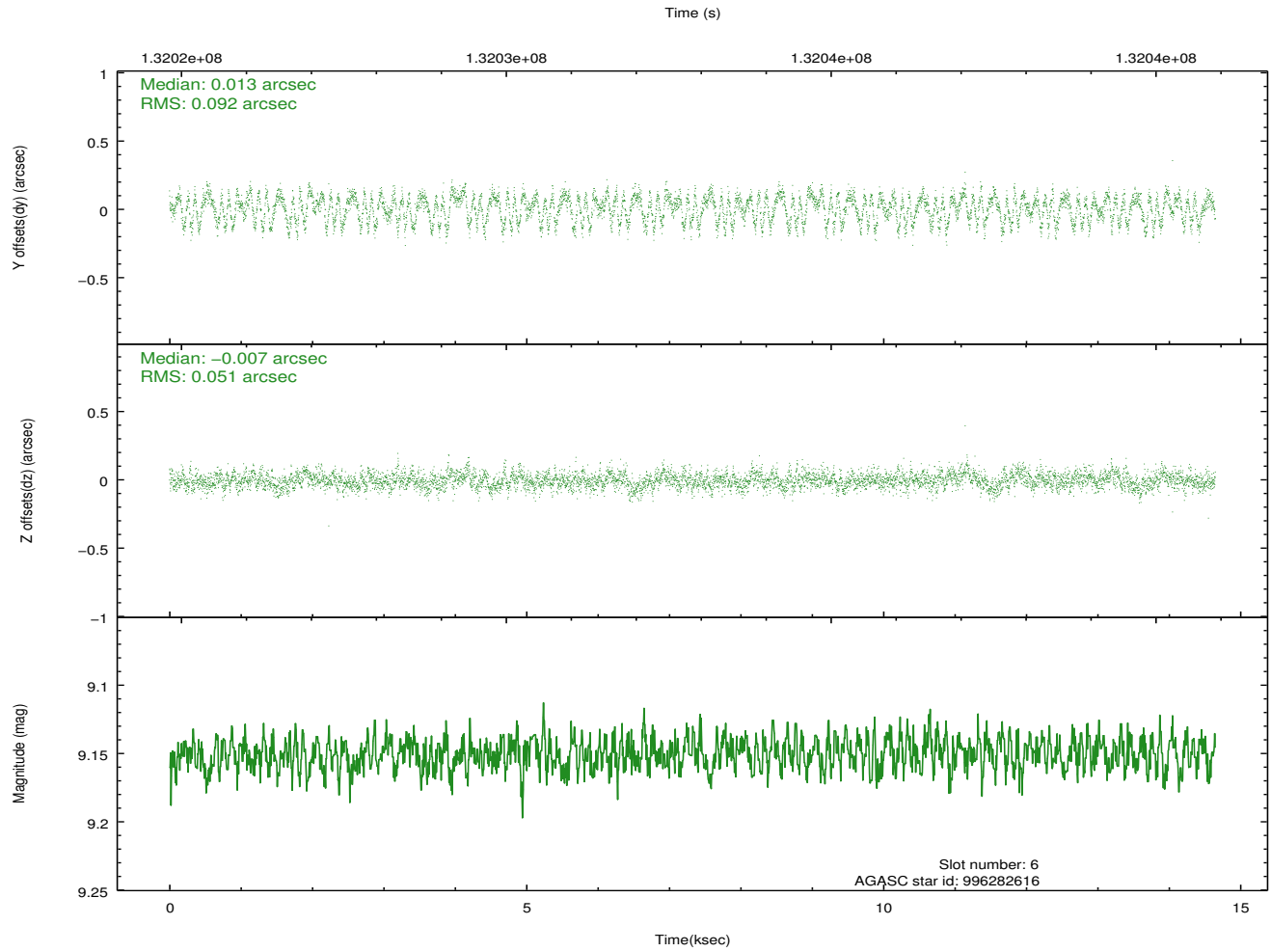
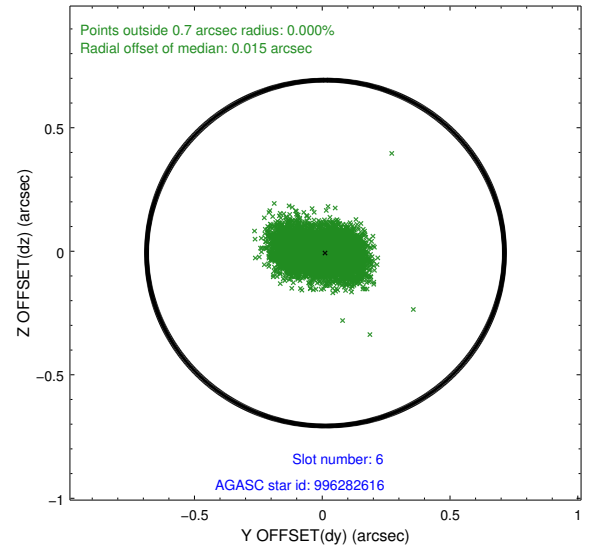
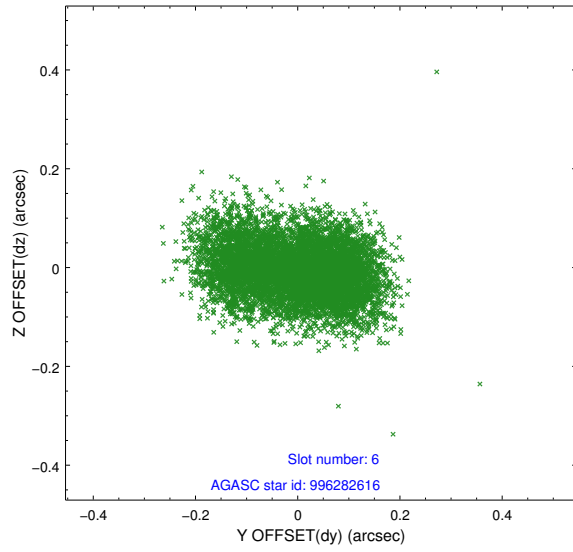
2.4.1 Slot 3



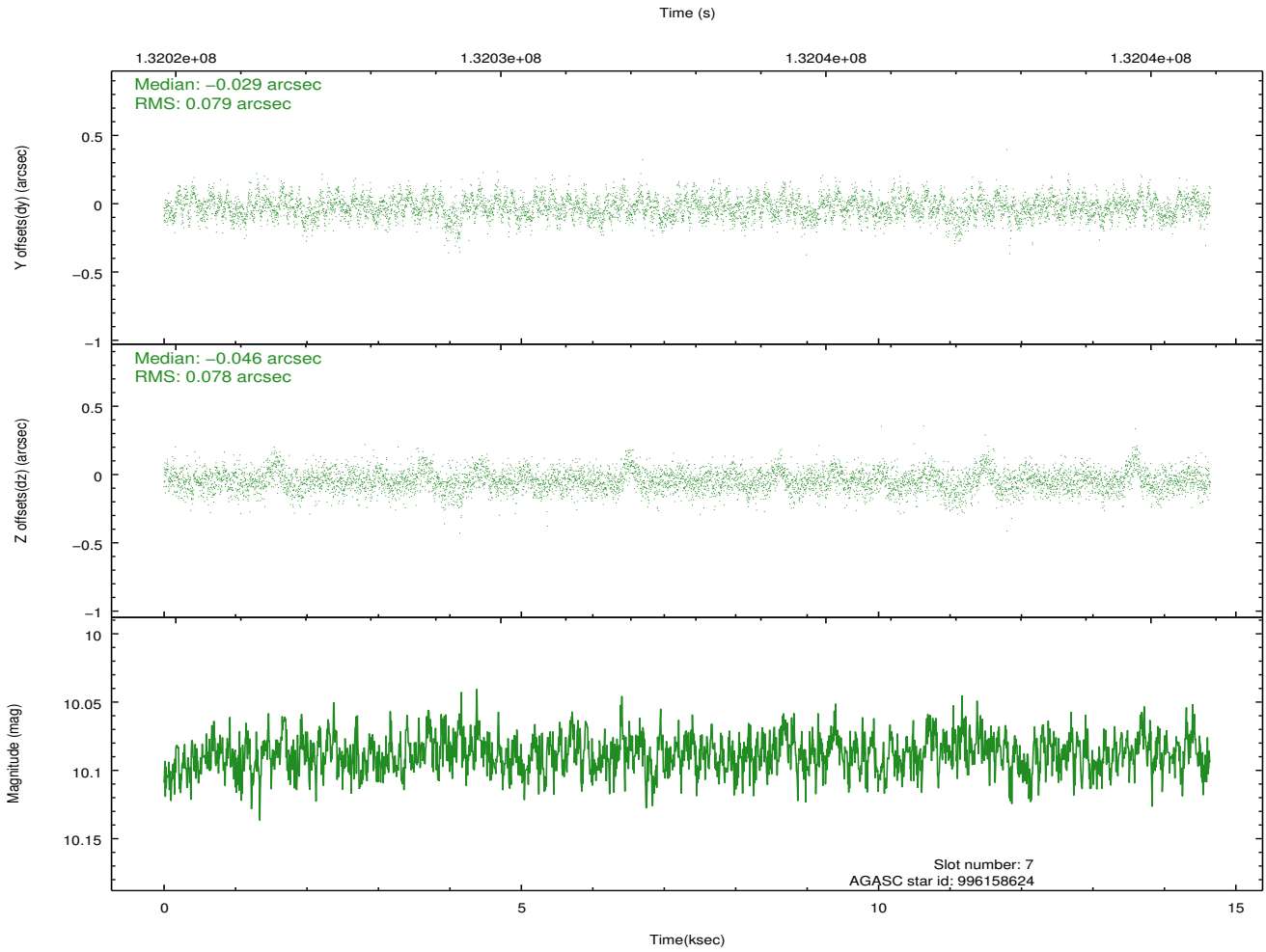
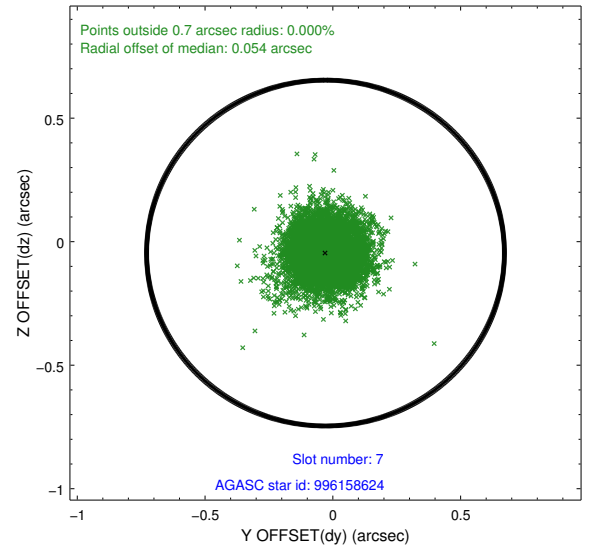
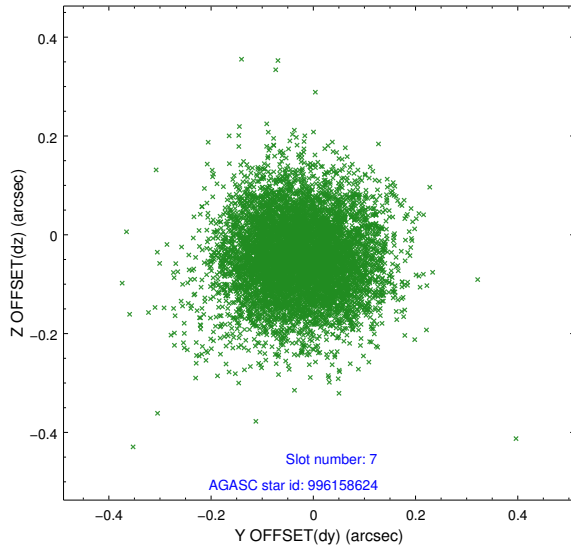
2.4.2 Slot 5



2.4.3 Slot 6

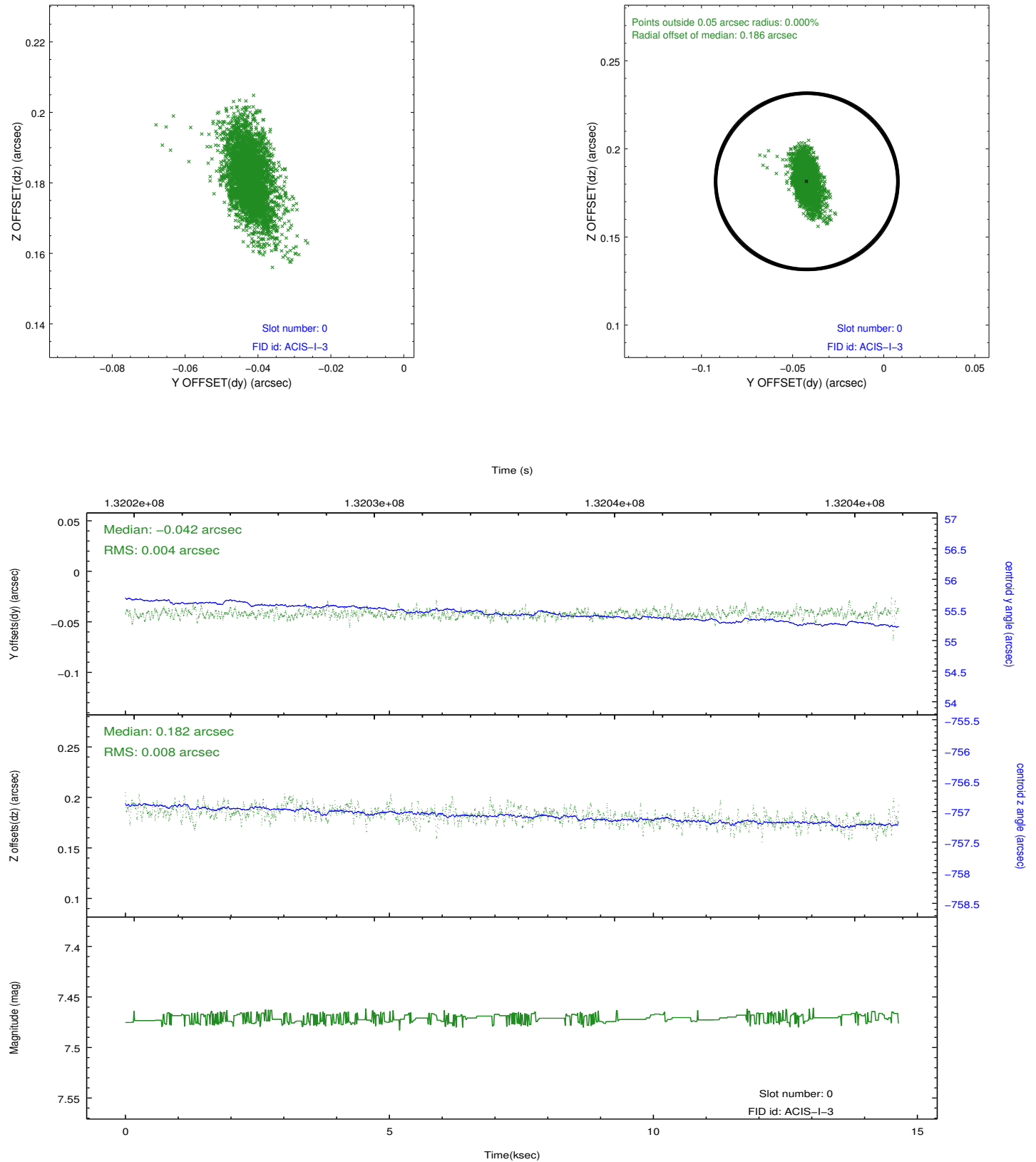


2.4.4 Slot 7

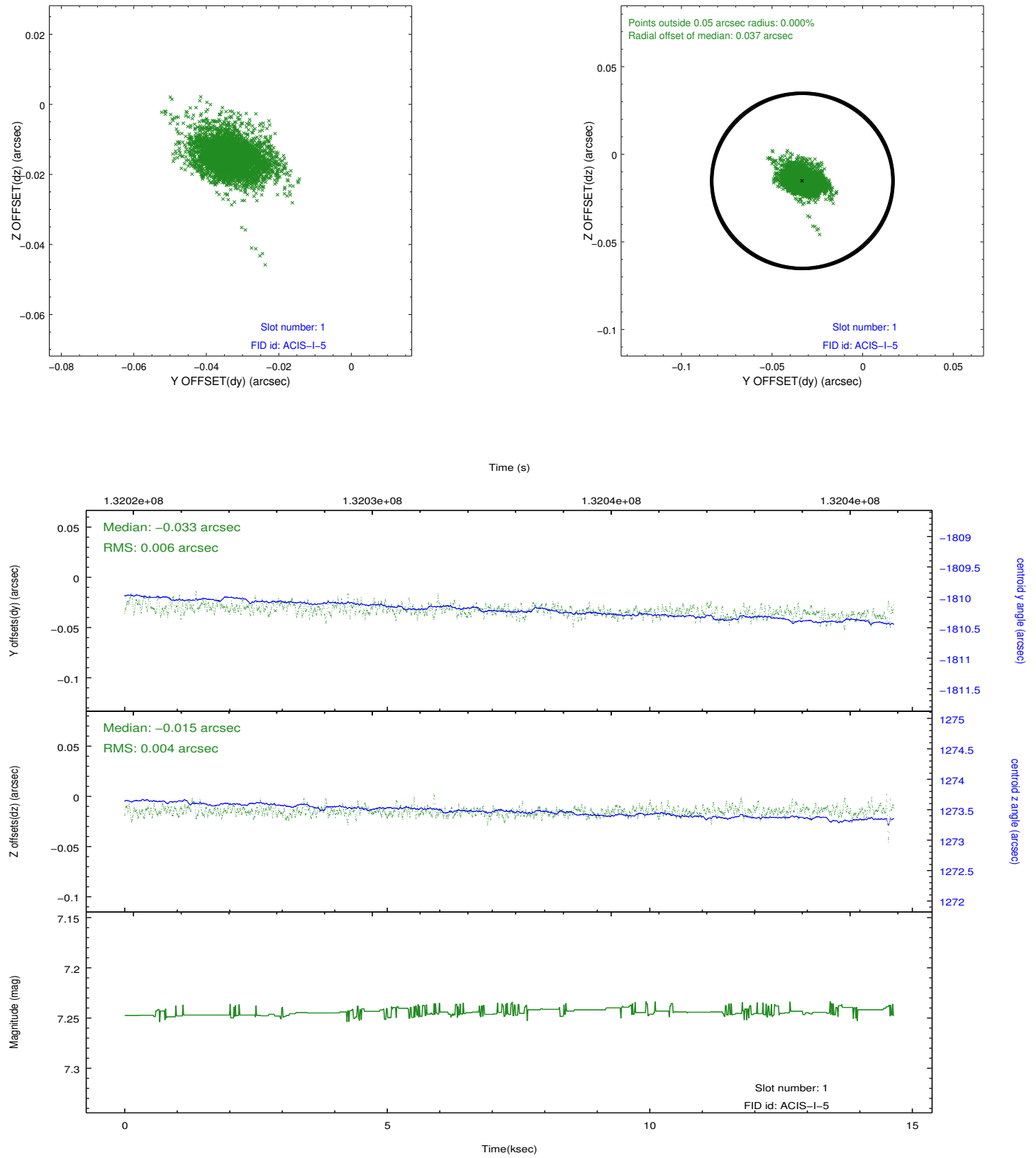


2.5 FID Slots

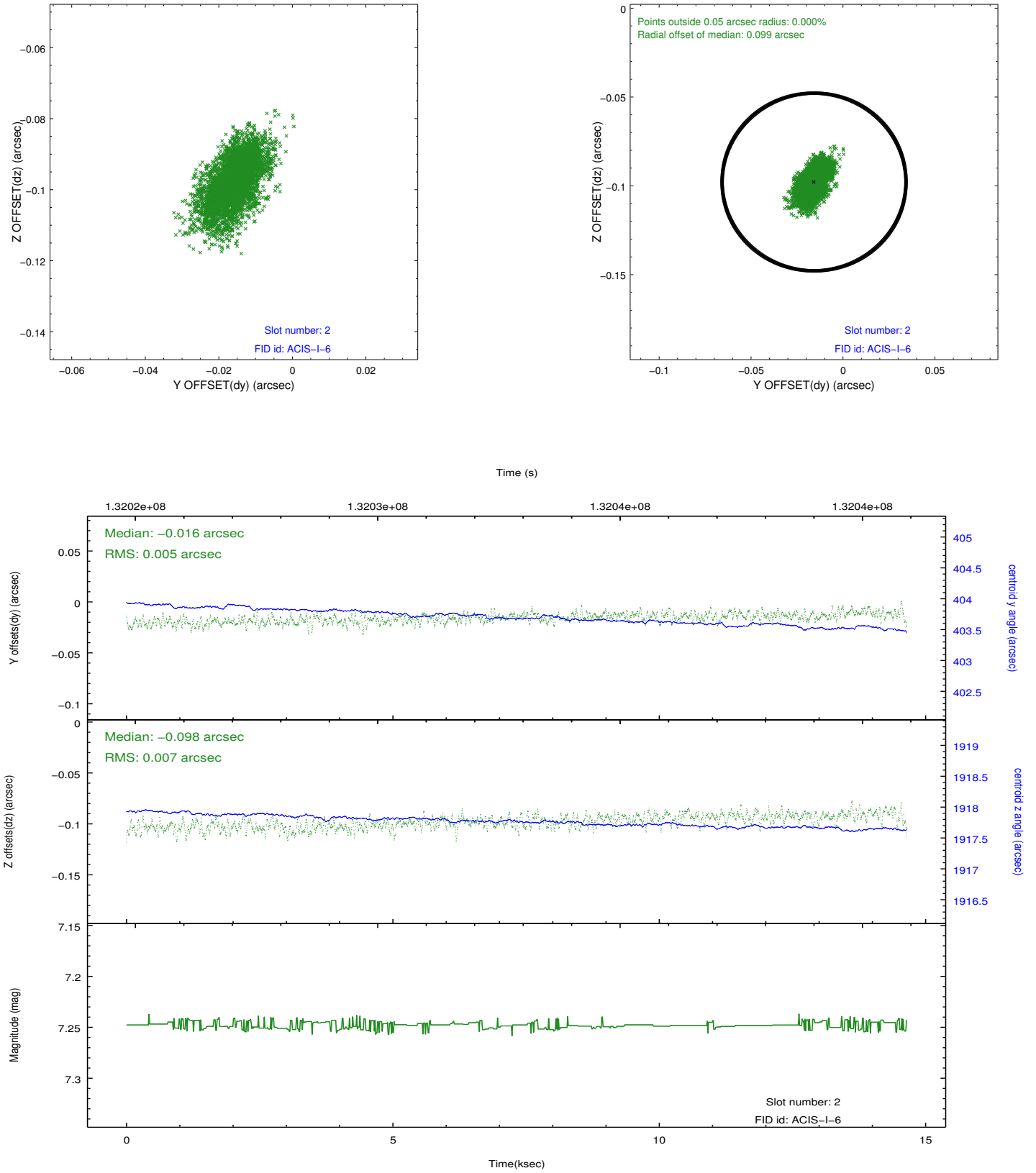
2.5.1 Slot 0



2.5.2 Slot 1



2.5.3 Slot 2



A Summary

A.1 Status

V&V Scientist	Beth Sundheim
V&V Date (YYYY-MM-DD)	2012.10.05
V&V Edition	1
V&V Disposition and Status	OK
V&V Charge Time	14.25

A.2 Comments

Slot 4 was not utilized in this observation.