

V&V Reference Report

L2 ASCDS Version : 7.6.8.1

Observation 3189 - L2 Version 001
Chandra X-Ray Center

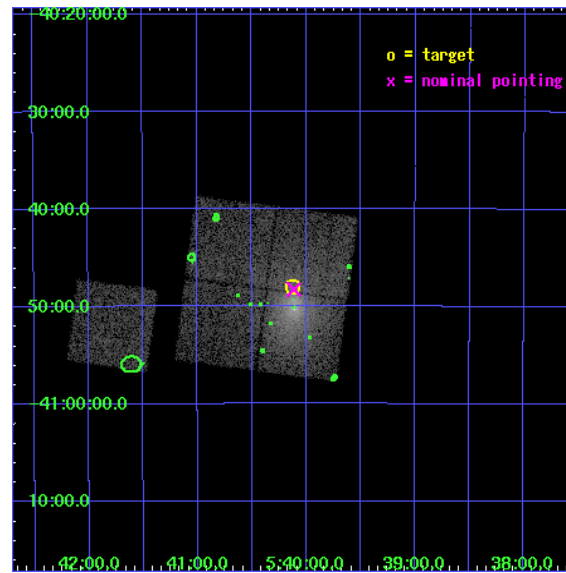
L2 Processing Date : Sep 6 2006

Contents

1	Front	2
2	OBI	3
2.1	OBI	3
2.1.1	Images	3
2.1.2	Bias	3
2.1.3	Parameters	4
2.1.4	Events	4
2.2	Compared Parameters	5
2.3	Aspect	6
2.4	Star Slots	9
2.4.1	Slot 3	9
2.4.2	Slot 5	10
2.4.3	Slot 6	11
2.4.4	Slot 7	12
2.5	FID Slots	13
2.5.1	Slot 0	13
2.5.2	Slot 1	14
2.5.3	Slot 2	15
3	Point Sources	16
A	Summary	17
A.1	Status	17
A.2	Comments	17

1 Front

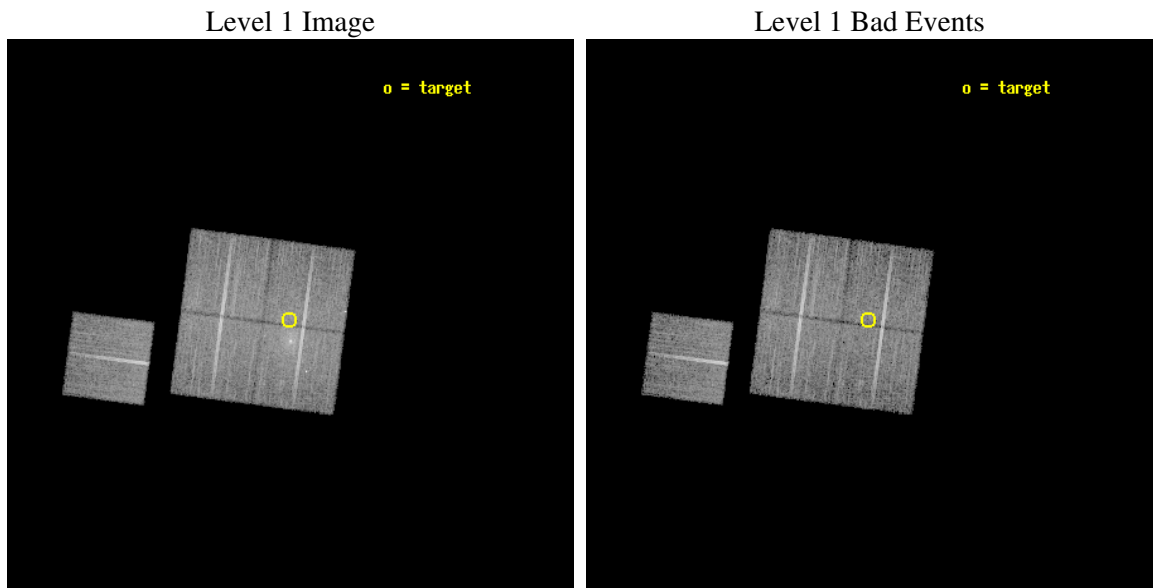
seq_num	800189
obs_id	3189
title	OLEGS OR FOSSIL GROUPS -- STUDYING EVOLVED GALAXY SYSTEMS
observer	Dr. Stephen Murray
object	ESO3060170-A
dtcycle	0
cycle	P
ra_targ	85.03
dec_targ	-40.8
ra_nom	85.028325117517
dec_nom	-40.804504969639
roll_nom	277.49451086522
revision	2
ontime	14247.558982432
livedtime	14061.404135426
ontime0	14247.558992445
ontime1	14247.558982432
ontime2	14244.418052107
ontime3	14250.6999726
ontime6	14250.6999726
l2events	55224



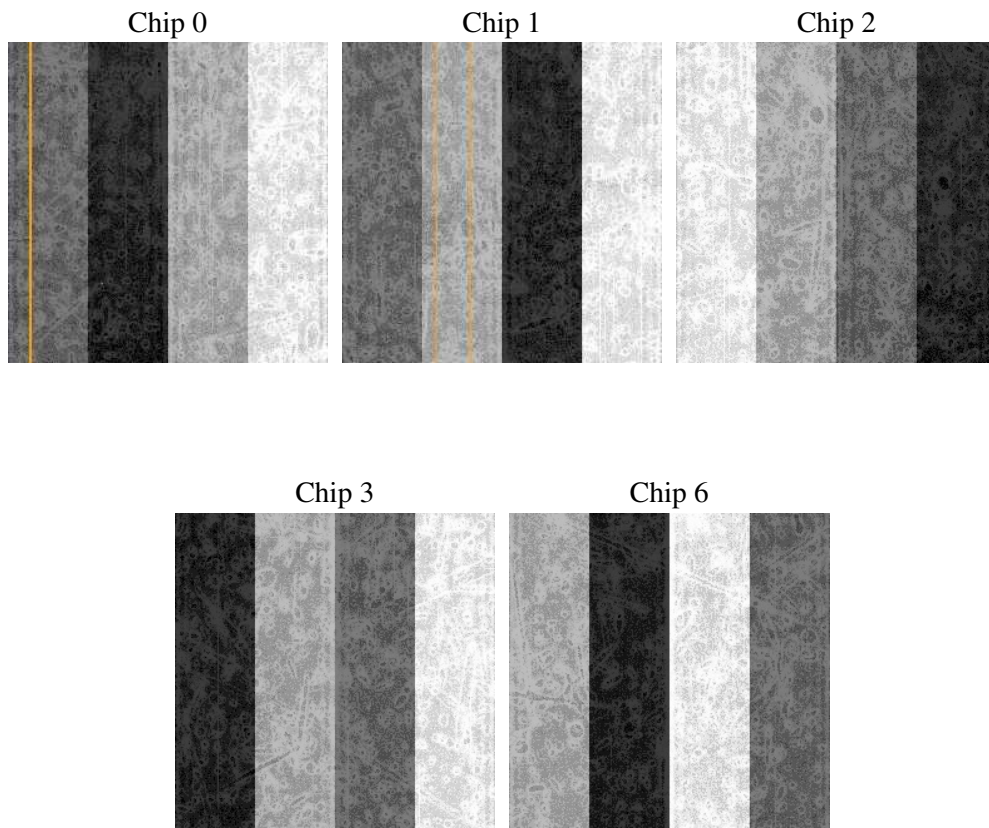
2 OBI

2.1 OBI

2.1.1 Images



2.1.2 Bias



2.1.3 Parameters

obi_num	1
ascdsver	7.6.8.1
caldbver	3.2.3
date	2006-09-06T13:45:54
revision	2

sched_exp_time	14477.073000
ontime	14250.720836565
ontime0	14250.720896393
ontime1	14250.720836565
ontime2	14247.579956055
ontime3	14253.861856639
ontime6	14253.861856639
llevents	433769

2.1.4 Events

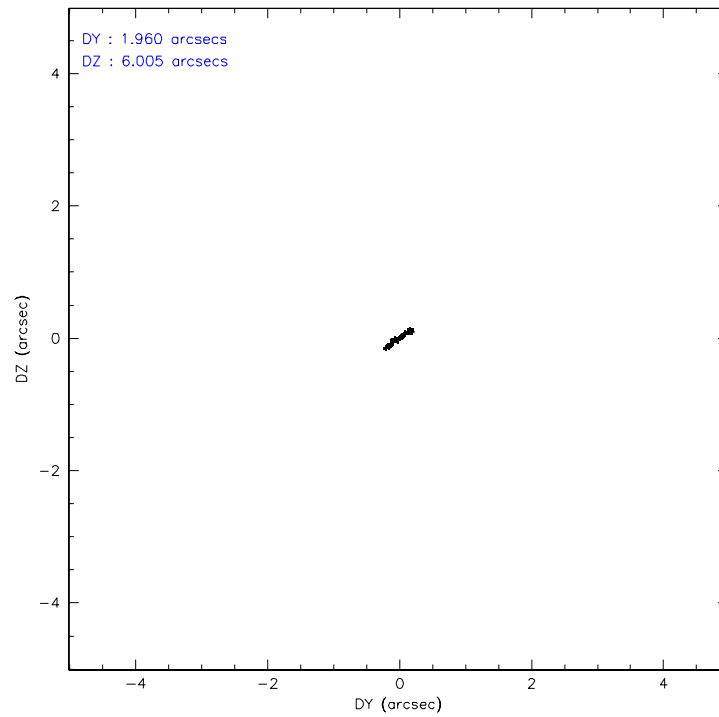
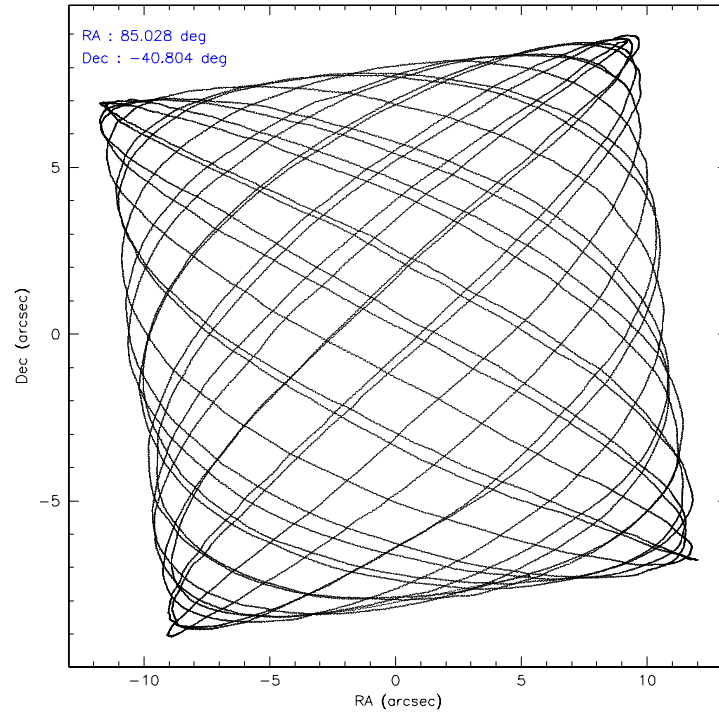
	ccd 0	ccd 1	ccd 2	ccd 3	ccd 6
level 1 events	94475	82422	86727	88528	81617
rejected events	70285	68660	77659	79816	73341
rejected %	74%	83%	89%	90%	89%

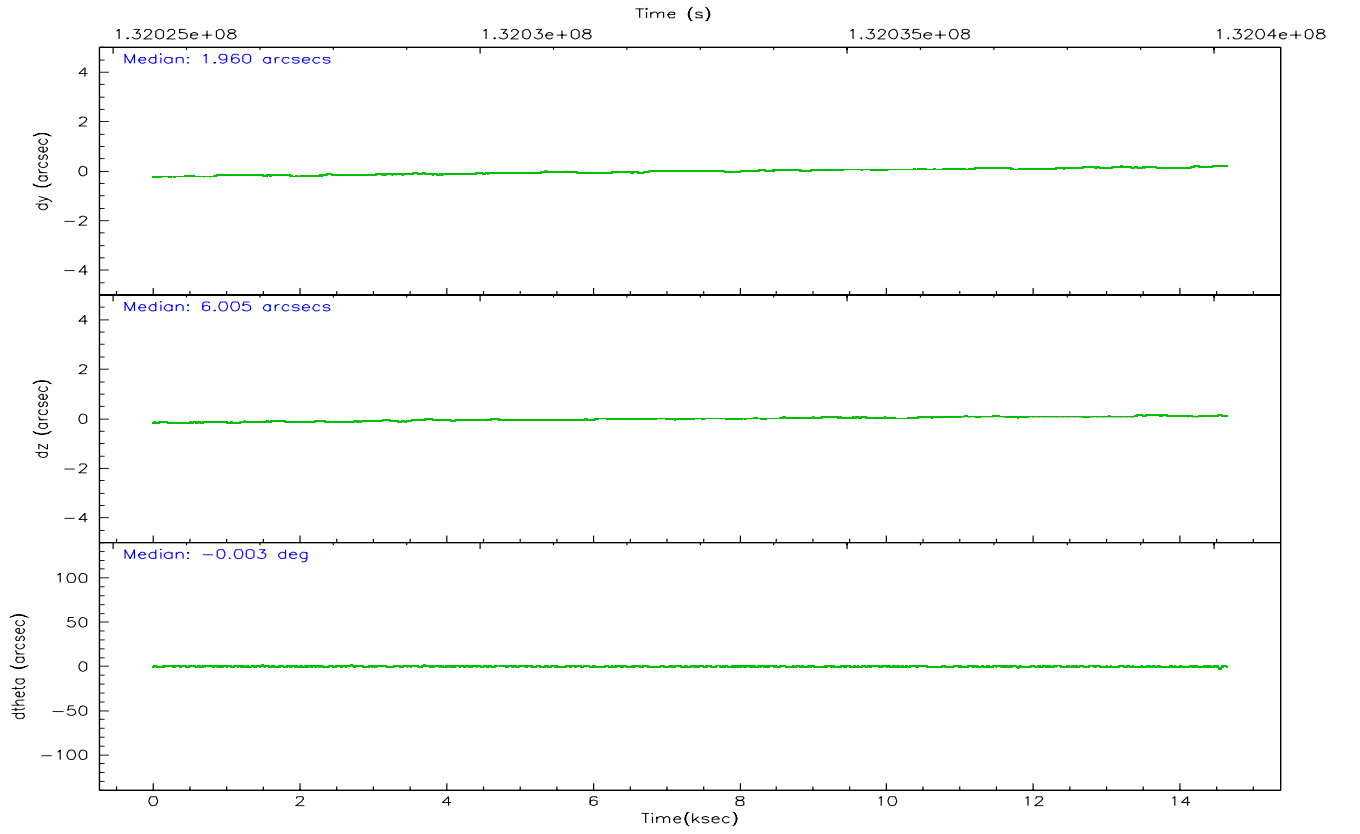
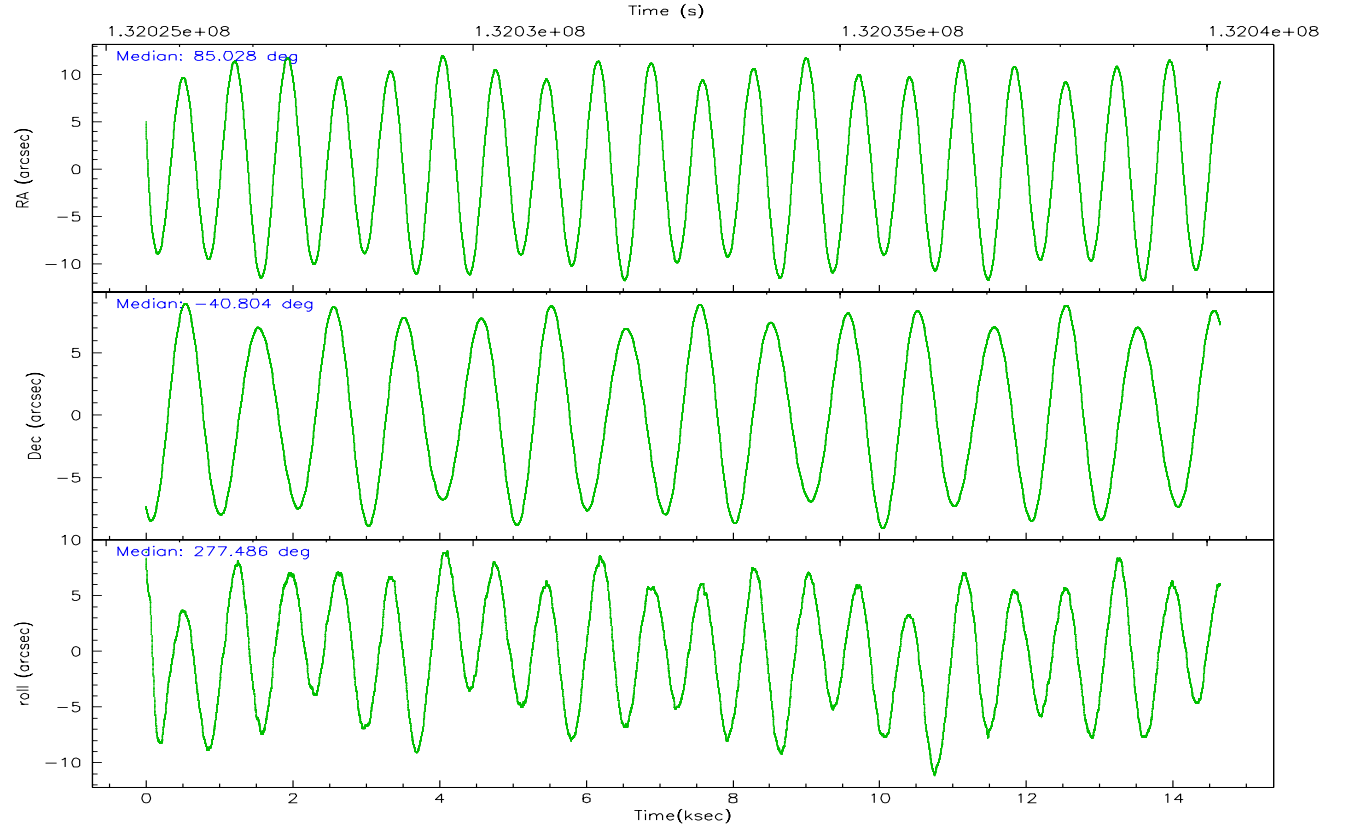
	ccd 0	ccd 1	ccd 2	ccd 3	ccd 6
grade 0 events	16360	7243	3853	3709	3062
	17%	8%	4%	4%	3%
grade 1 events	116	68	36	56	36
	0%	0%	0%	0%	0%
grade 2 events	3258	2345	1966	1706	1707
	3%	2%	2%	1%	2%
grade 3 events	1414	1180	893	907	930
	1%	1%	1%	1%	1%
grade 4 events	1306	1121	914	879	914
	1%	1%	1%	0%	1%
grade 5 events	2618	2762	2363	2789	3017
	2%	3%	2%	3%	3%
grade 6 events	1862	1875	1442	1512	1665
	1%	2%	1%	1%	2%
grade 7 events	67541	65828	75260	76970	70286
	71%	79%	86%	86%	86%

2.2 Compared Parameters

Parameter	Planned	Actual	Parameter	Planned	Actual
Instrument	ACIS	ACIS	Obspar format version number	6	6
Detector	ACIS-01236	ACIS-01236	Obspar file type	PREDICTED	ACTUAL
Grating	NONE	NONE	Obspar update status	NONE	UPDATED
Data mode	VFAINT	VFAINT	On-chip summing requested	N	N
Observation mode	POINTING	POINTING	Subarray requested	NONE	NONE
Pointing RA	85.006233	85.02832511751689	Alternating exposures requested	N	N
Pointing Dec	-40.782807	-40.8045049696387	Primary exposure time	0.000000	3.1
Pointing Roll	277.271397	277.4945108652236			
SIM focus pos (mm)	-0.782348	-0.7809083437167272			
SIM defocus (mm)	0	0.001439871863259334			
SIM translation stage pos (mm)	-243.592463	-243.5843520998312			
SIM translation stage offset (mm)	10	9.991899096901562			
Observation start time	132025711.184000	132025346.02049			
Observation start date	2002-03-09T01:47:27	2002-03-09T01:42:26			
Observation end time	132040188.184000	132040503.2086			
Observation end date	2002-03-09T05:48:44	2002-03-09T05:55:03			
Read mode	TIMED	TIMED			

2.3 Aspect



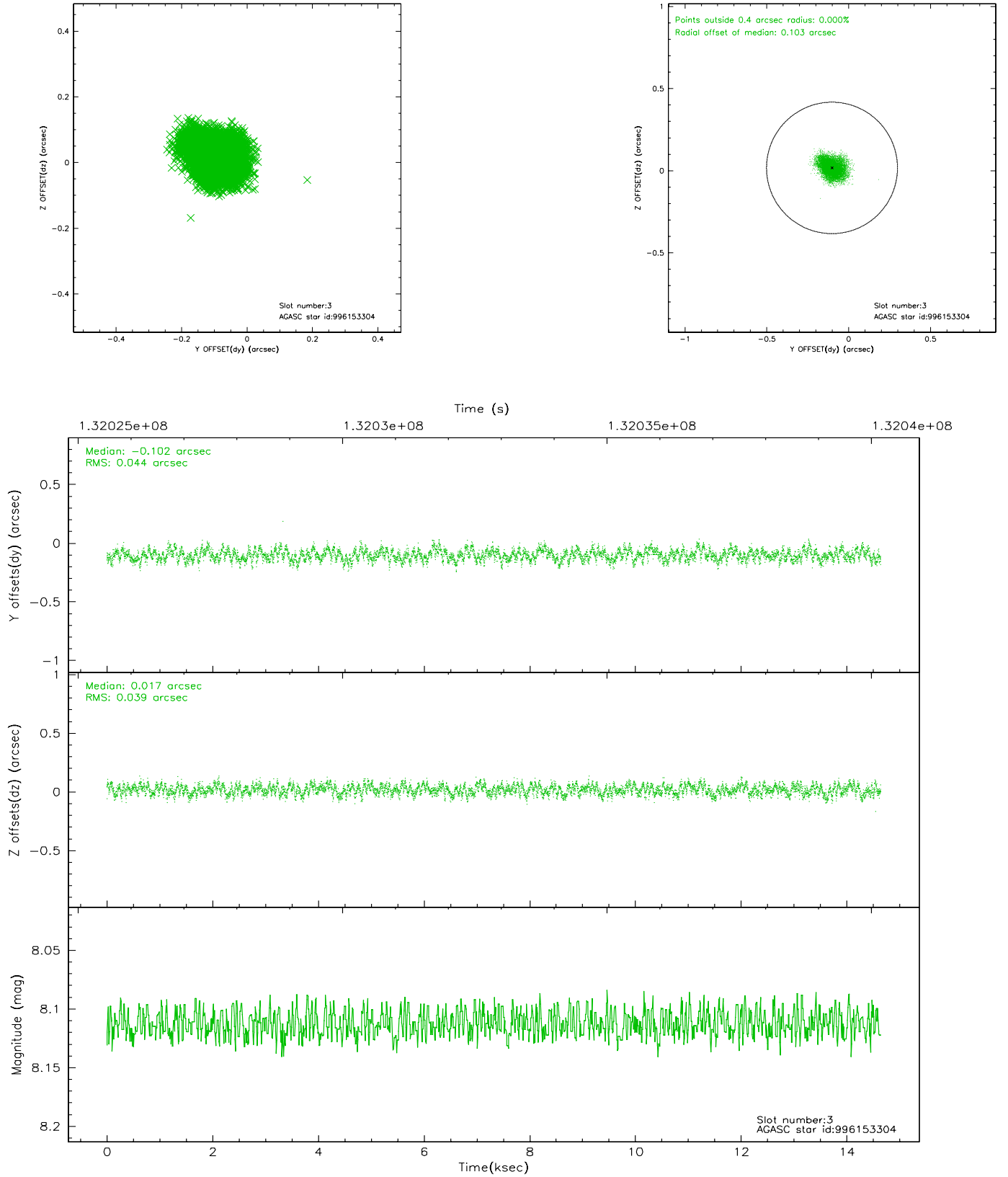


Slot Statistics

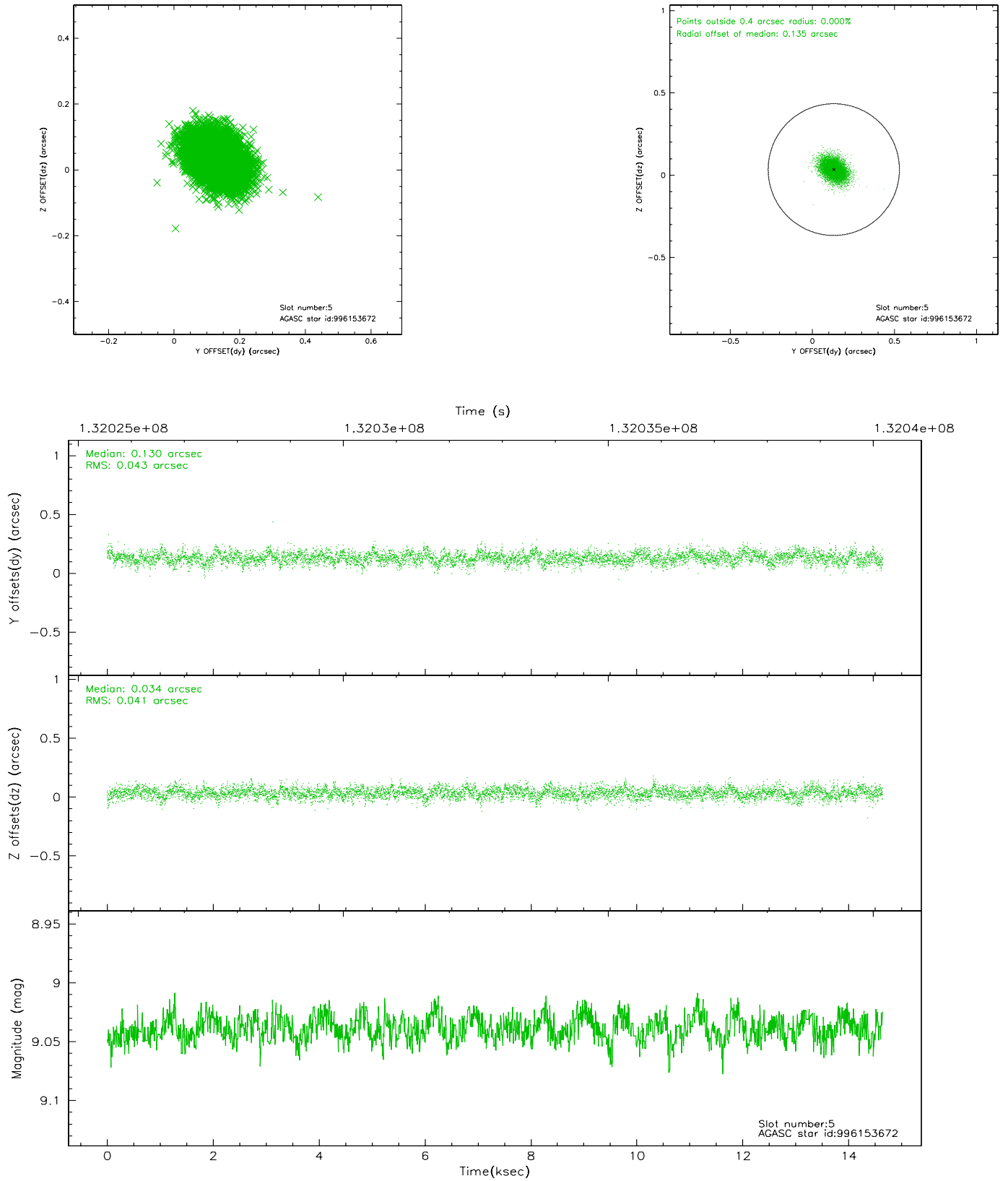
slot	status	id	mag	n_pts	med_dy	med_dz	dr1	dr2	ra	dec	mean_y	mean_z
0	FID	ACIS-I-3	7.47	3573	-0.052	0.210	0.008	0.015	0.000000	0.000000	55.44	-757.03
1	FID	ACIS-I-5	7.24	3573	-0.008	-0.024	0.007	0.012	0.000000	0.000000	-1810.16	1273.27
2	FID	ACIS-I-6	7.25	3573	-0.032	-0.118	0.008	0.013	0.000000	0.000000	403.18	1918.12
3	GUIDE	996153304	8.11	7143	-0.102	0.017	0.063	0.101	84.449102	-41.163019	1171.86	-1670.99
4	UNUSED		0.00	0	0.000	0.000	0.000	0.000	0.000000	0.000000	0.00	0.00
5	GUIDE	996153672	9.04	7142	0.130	0.034	0.062	0.105	84.845844	-41.056579	923.61	-556.26
6	GUIDE	996282616	9.15	7143	0.013	-0.007	0.112	0.182	85.789633	-40.160851	-1938.84	2420.54
7	GUIDE	996158624	10.09	7143	-0.029	-0.046	0.116	0.192	84.150888	-40.278808	-2085.60	-2101.64

2.4 Star Slots

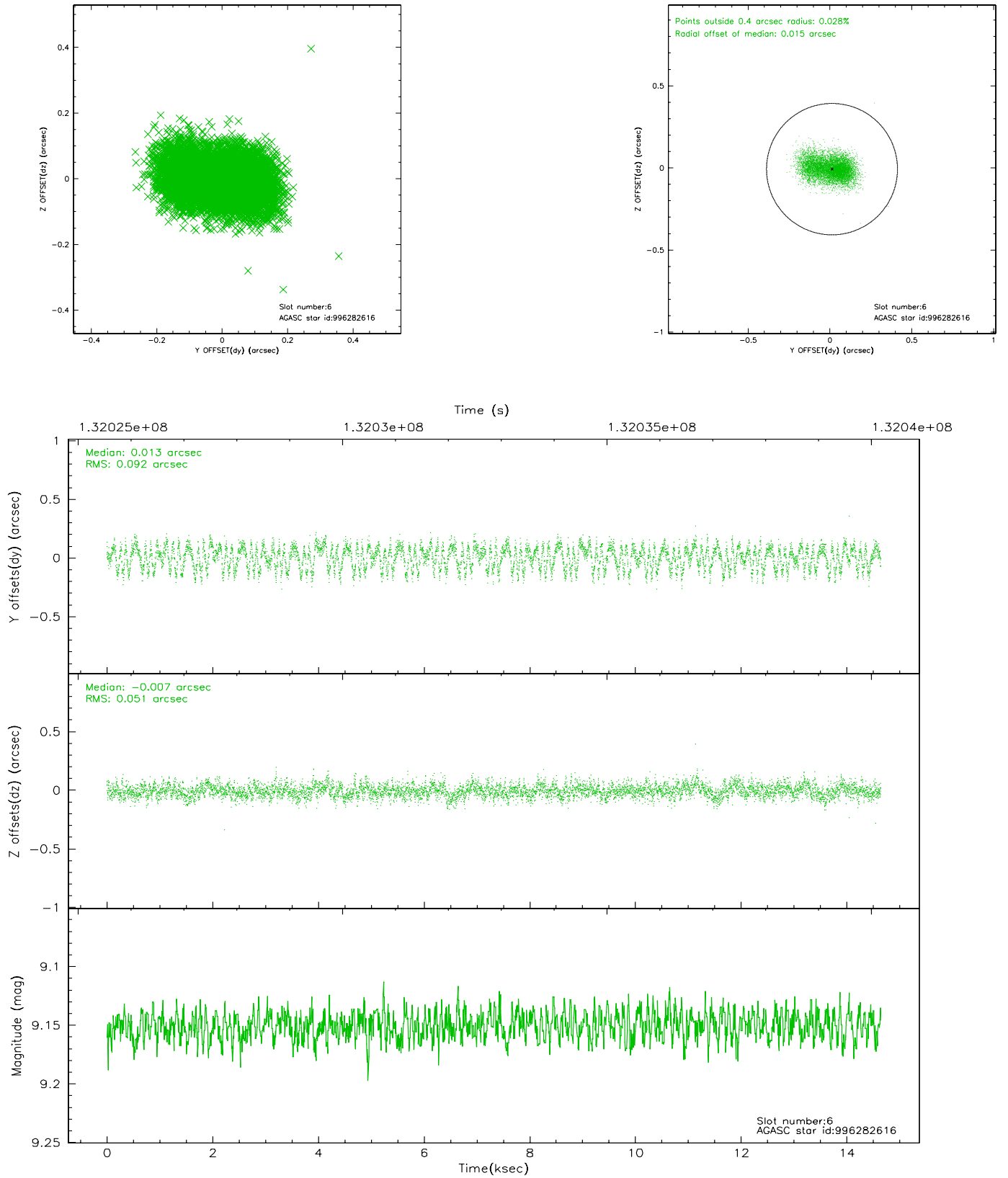
2.4.1 Slot 3



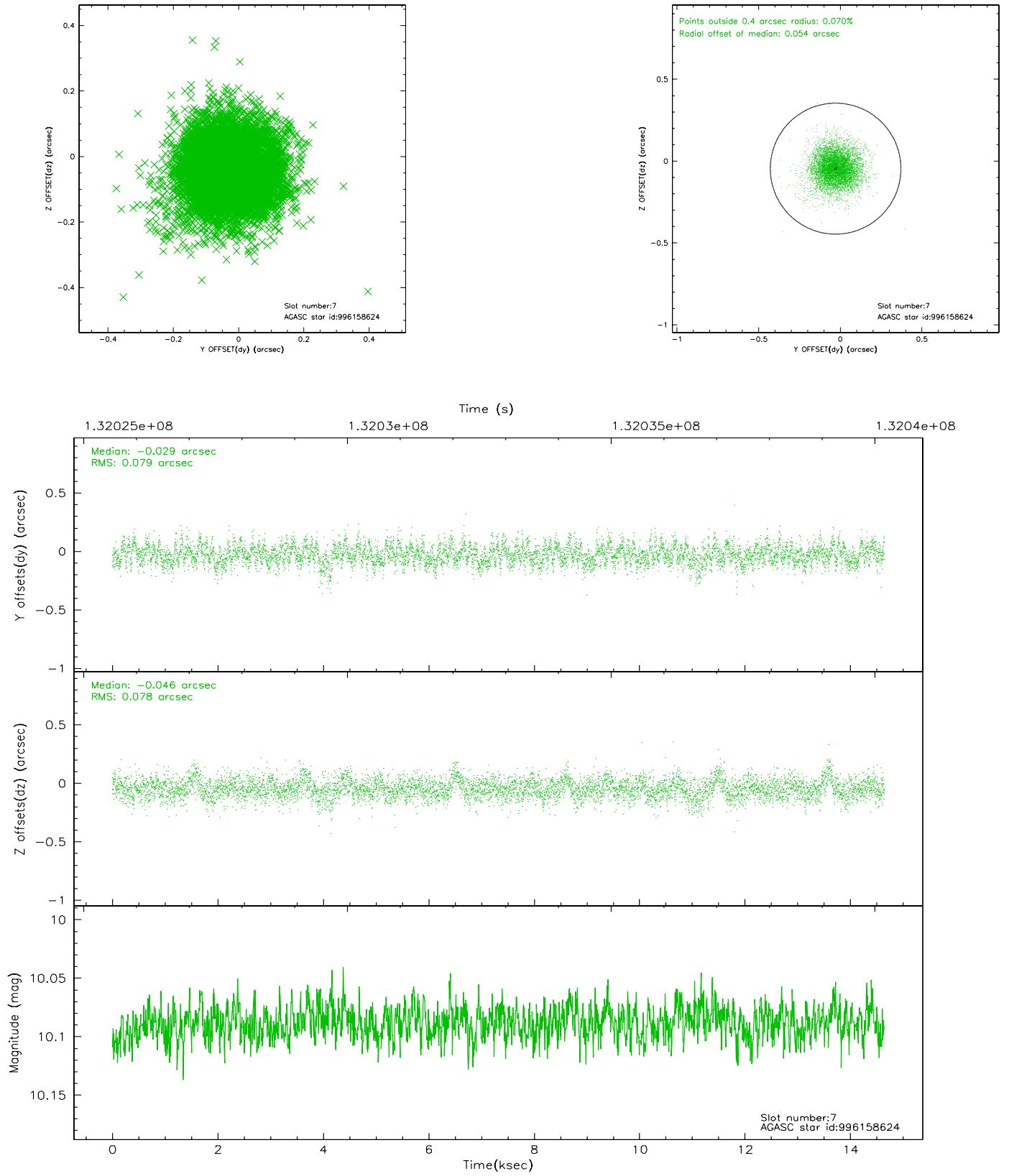
2.4.2 Slot 5



2.4.3 Slot 6

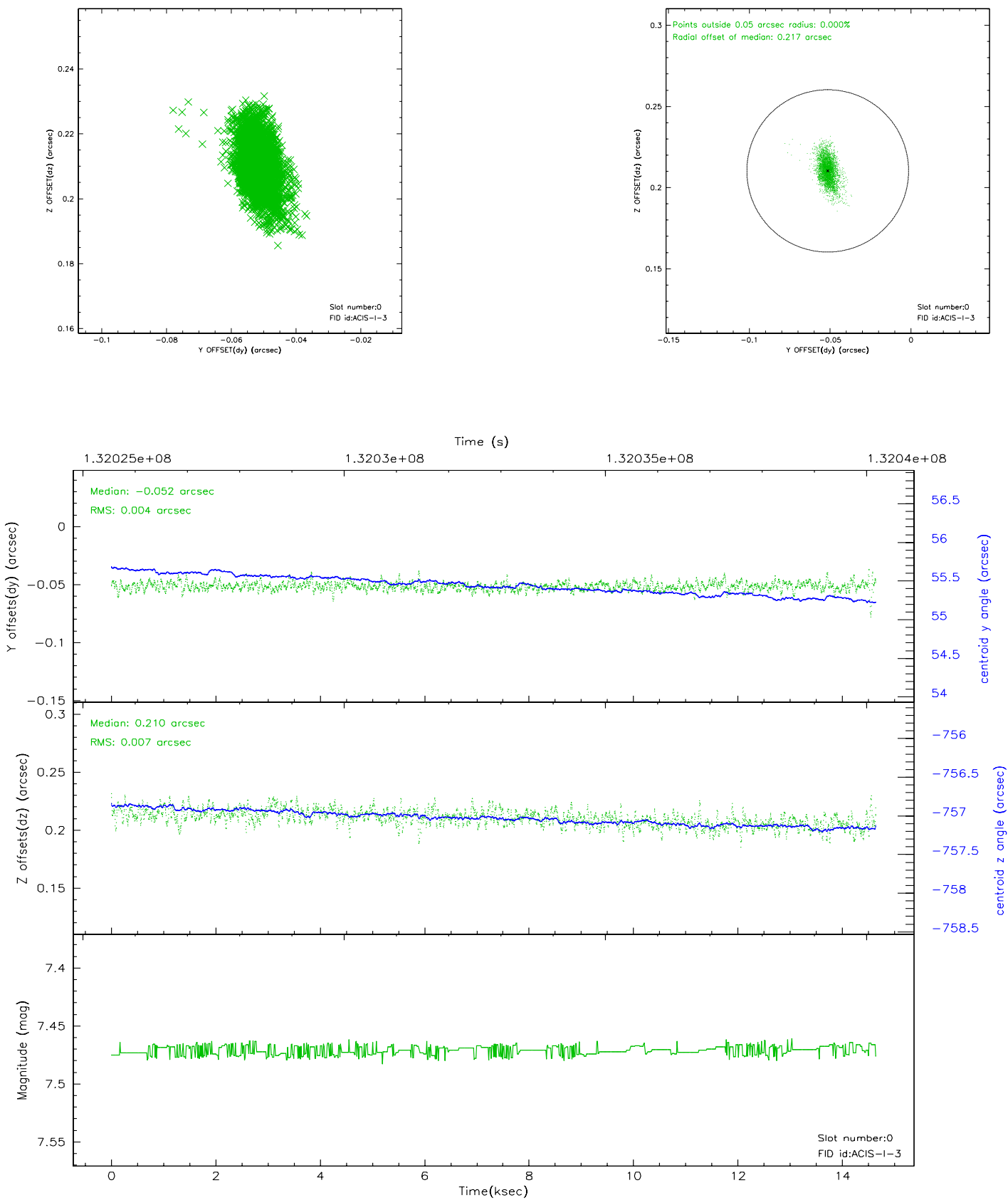


2.4.4 Slot 7

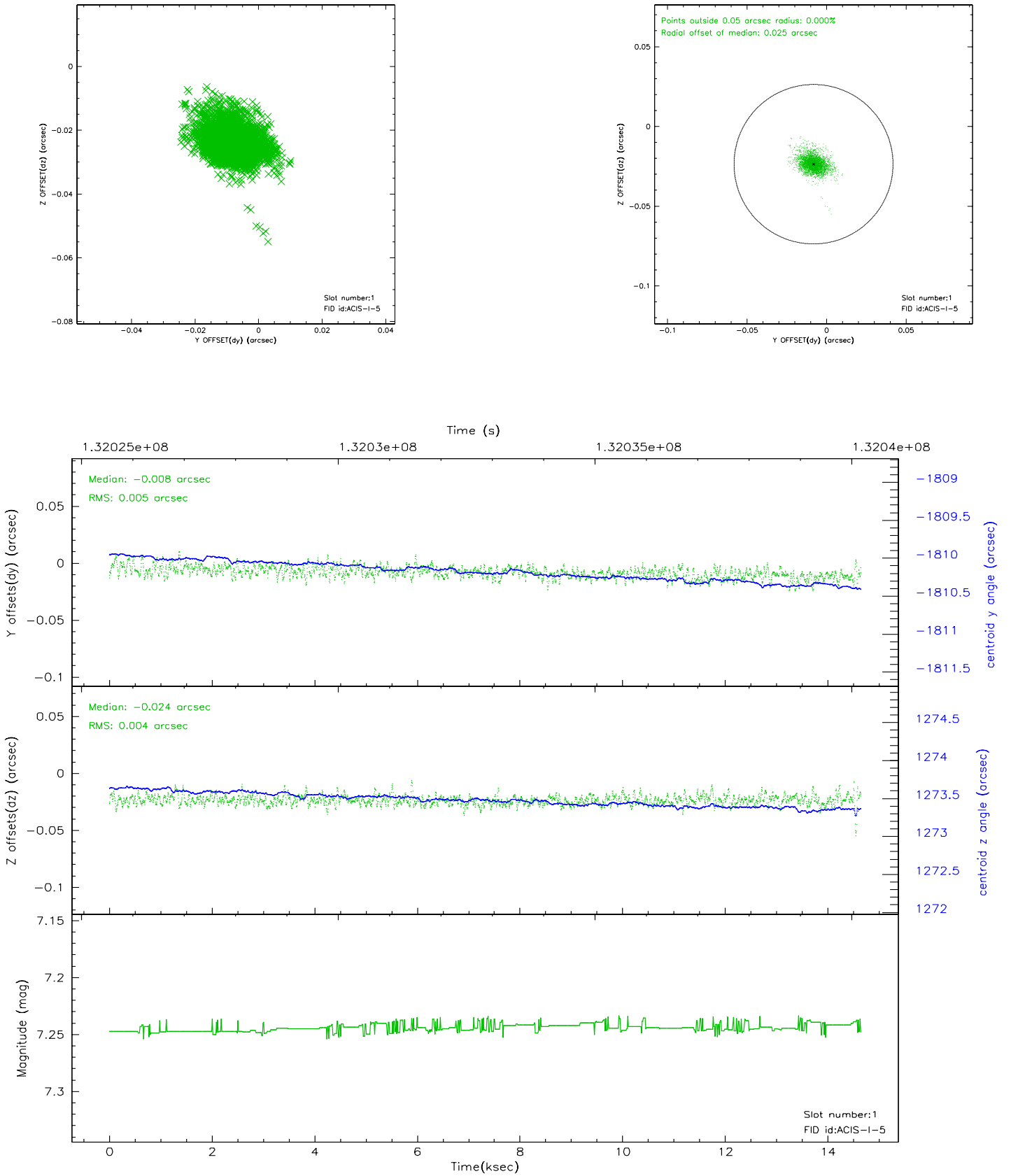


2.5 FID Slots

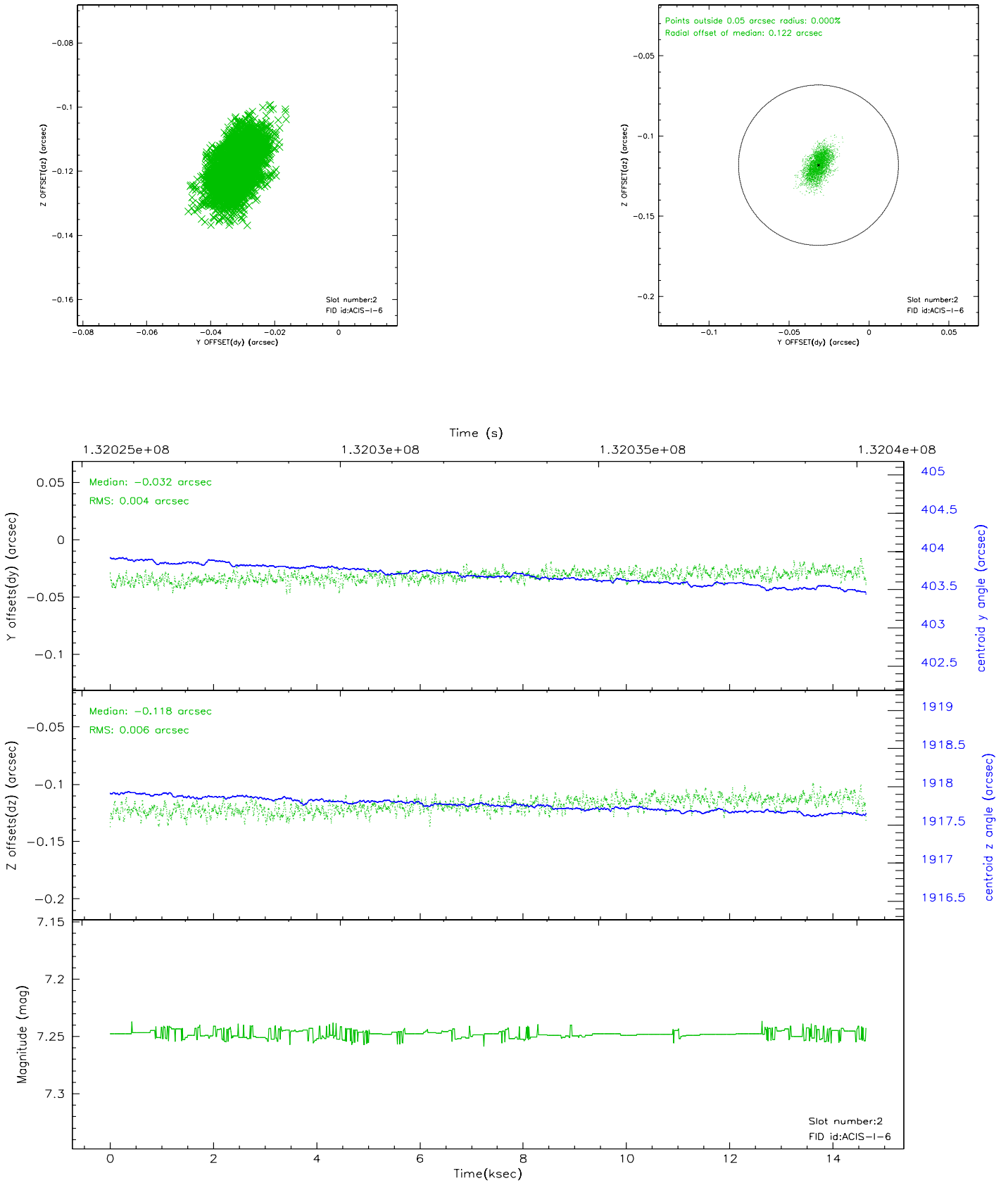
2.5.1 Slot 0



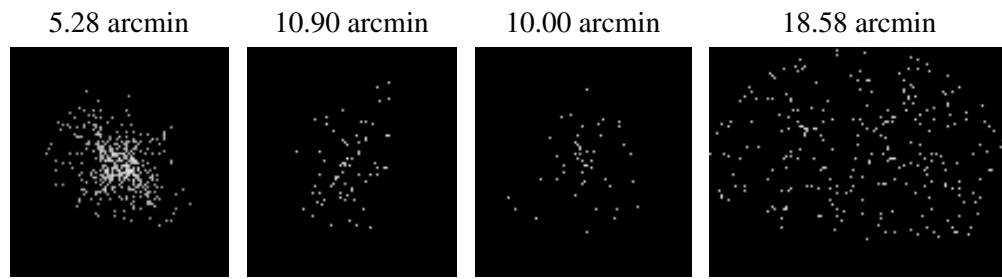
2.5.2 Slot 1



2.5.3 Slot 2



3 Point Sources



A Summary

A.1 Status

V&V Scientist	Beth Sundheim
V&V Date (YYYY-MM-DD)	2006.09.06
V&V Edition	1
V&V Disposition and Status	OK
V&V Charge Time	14.25

A.2 Comments

Slot 4 was not utilized in this observation.