

V&V Reference Report

L2 ASCDS Version : 8.4.5

Observation 4363 - L2 Version 3
Chandra X-Ray Center

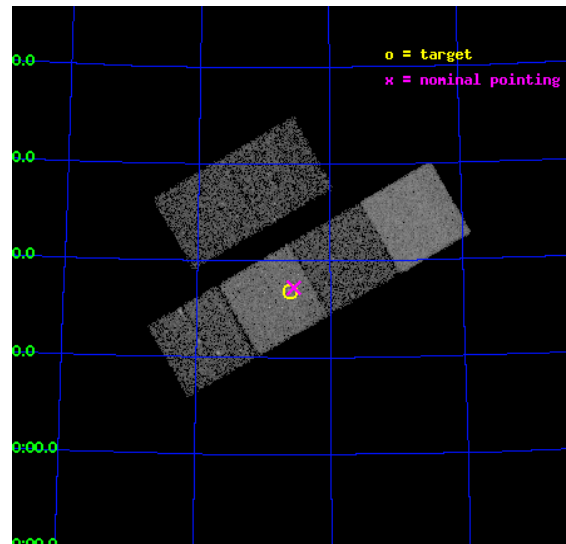
L2 Processing Date : Oct 13 2012

Contents

1	Front	2
2	OBI	3
2.1	OBI	3
2.1.1	Images	3
2.1.2	Bias	3
2.1.3	Parameters	4
2.1.4	Events	4
2.2	Compared Parameters	5
2.3	Aspect	6
2.4	Star Slots	9
2.4.1	Slot 3	9
2.4.2	Slot 4	10
2.4.3	Slot 5	11
2.4.4	Slot 6	12
2.4.5	Slot 7	13
2.5	FID Slots	14
2.5.1	Slot 0	14
2.5.2	Slot 1	15
2.5.3	Slot 2	16
A	Summary	17
A.1	Status	17
A.2	Comments	17

1 Front

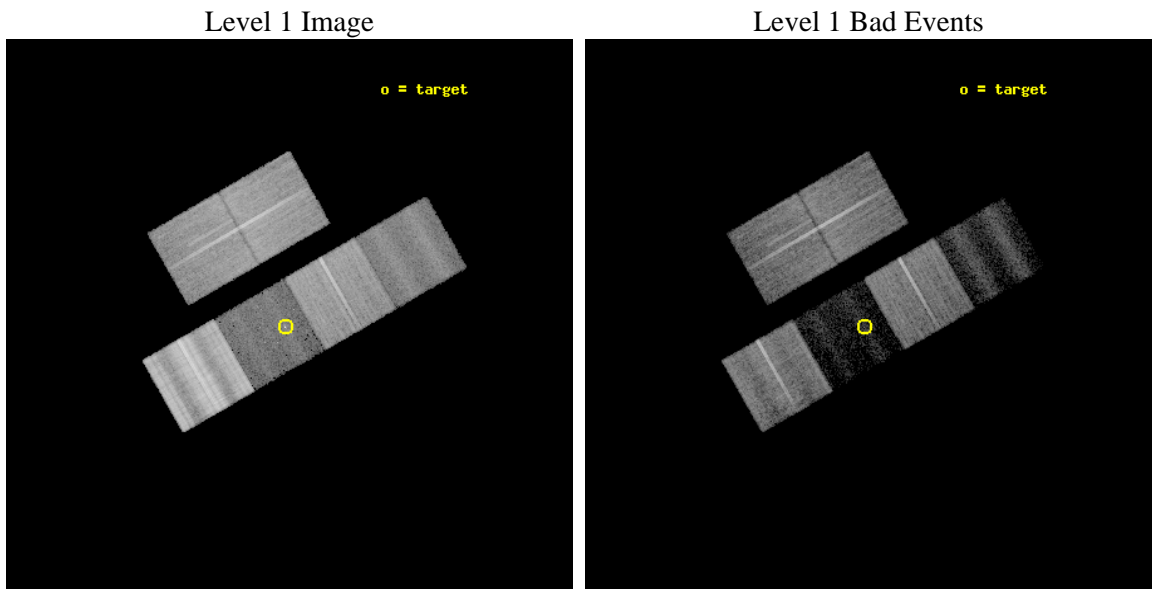
seq_num	700448	Sequence number
obs_id	4363	Observation id
title	INVERSE COMPTON SCATTERING IN POWERFUL RADIO GALAXIES: CONSTRAINING THE ELECTRON SPECTRUM	Proposal title
observer	Dr. Gianfranco Brunetti	Principal investigator
object	3C 6.1	Source name
dtcycle	0	
cycle	P	events from which exps? Prim/Second/Both
ra_targ	4.131667	Observer's specified target RA [deg]
dec_targ	79.281111	Observer's specified target Dec [deg]
ra_nom	4.0917769049251	Nominal RA [deg]
dec_nom	79.287333485822	Nominal Dec [deg]
roll_nom	150.13580982738	Nominal Roll [deg]
revision	3	Processing version of data
ontime	20153.599924922	Sum of GTIs [s]
livetime	19898.402907632	Livetime [s]
ontime2	20153.599924922	Sum of GTIs [s]
ontime3	20150.358964682	Sum of GTIs [s]
ontime5	20153.599924922	Sum of GTIs [s]
ontime6	20153.599924922	Sum of GTIs [s]
ontime7	20153.599924922	Sum of GTIs [s]
ontime8	20153.599924922	Sum of GTIs [s]
l2events	70307	Number of level 2 events



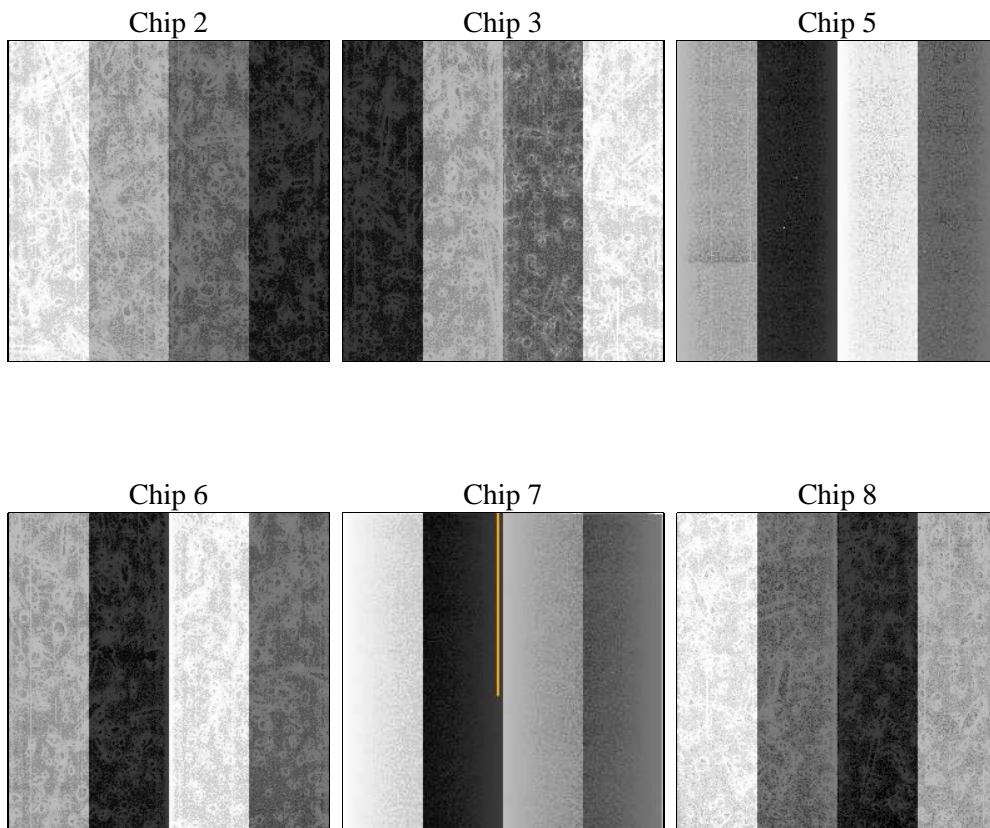
2 OBI

2.1 OBI

2.1.1 Images



2.1.2 Bias



2.1.3 Parameters

obi_num	2	Obi number	sched_exp_time	20000.000000	[s] Scheduled observation exposure time
ascdsver	8.4.5	Processing system revision	ontime	20153.599924922	Sum of GTIs [s]
caldsver	4.5.2	 	ontime2	20153.599924922	Sum of GTIs [s]
date	2012-10-14T00:39:59	Date and time of file creation	ontime3	20150.358964682	Sum of GTIs [s]
revision	3	Processing version of data	ontime5	20153.599924922	Sum of GTIs [s]
			ontime6	20153.599924922	Sum of GTIs [s]
			ontime7	20153.599924922	Sum of GTIs [s]
			ontime8	20153.599924922	Sum of GTIs [s]
			l1events	671895	Number of level 1 events

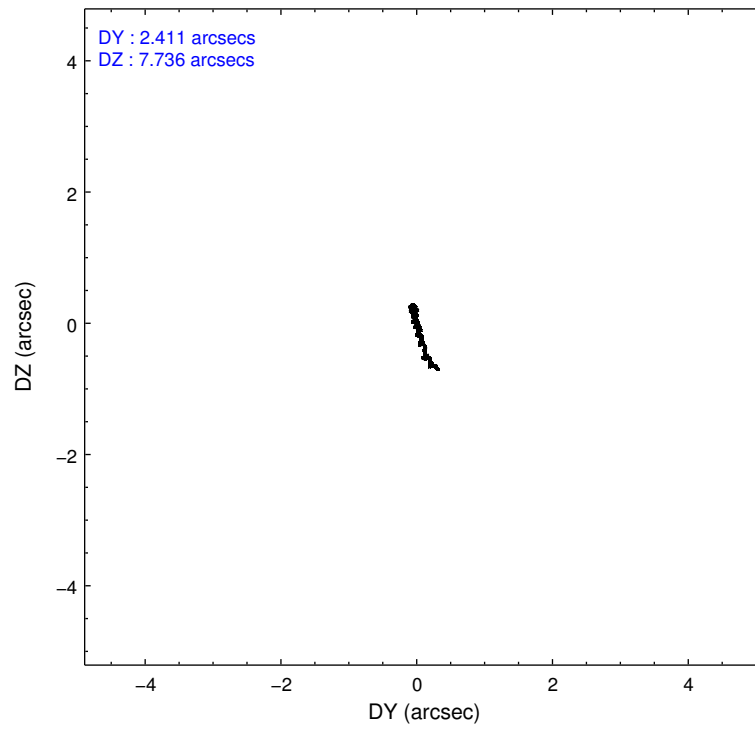
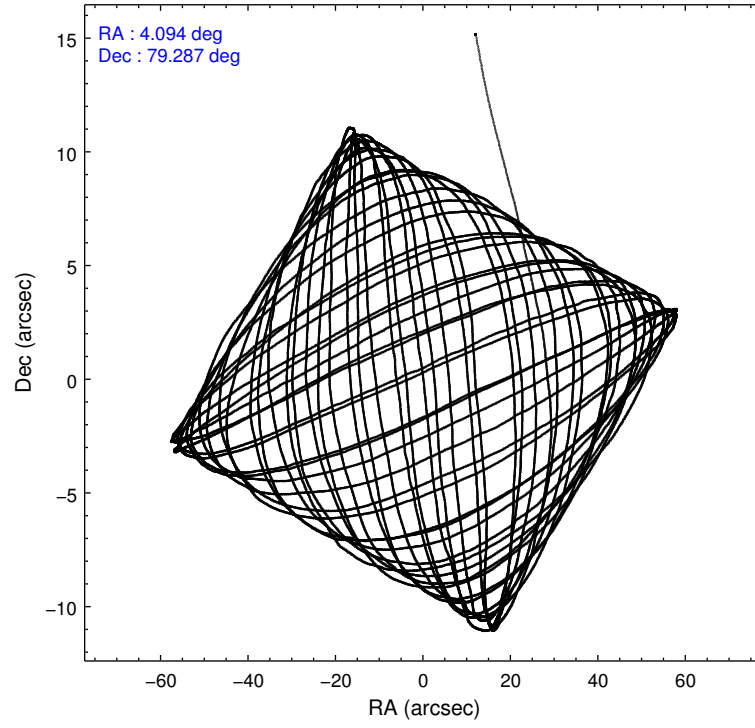
2.1.4 Events

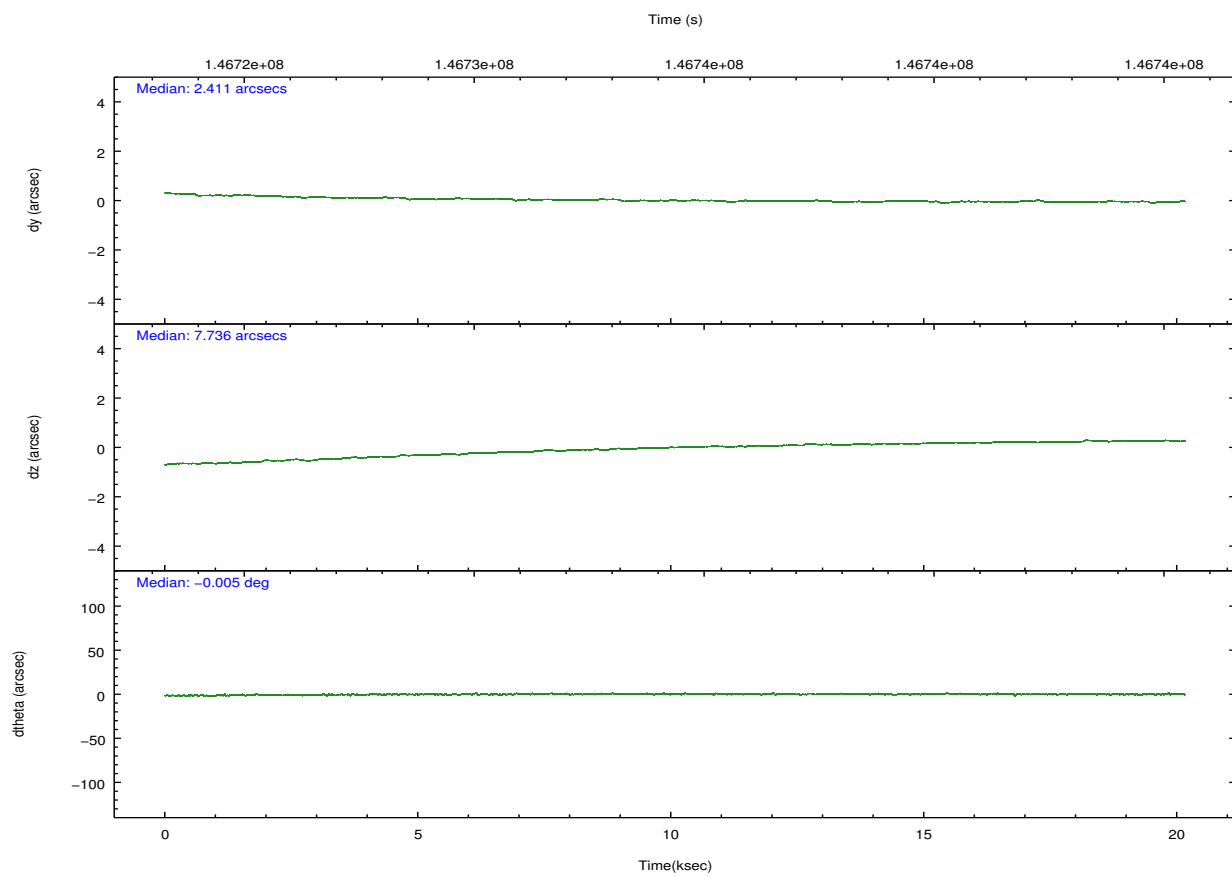
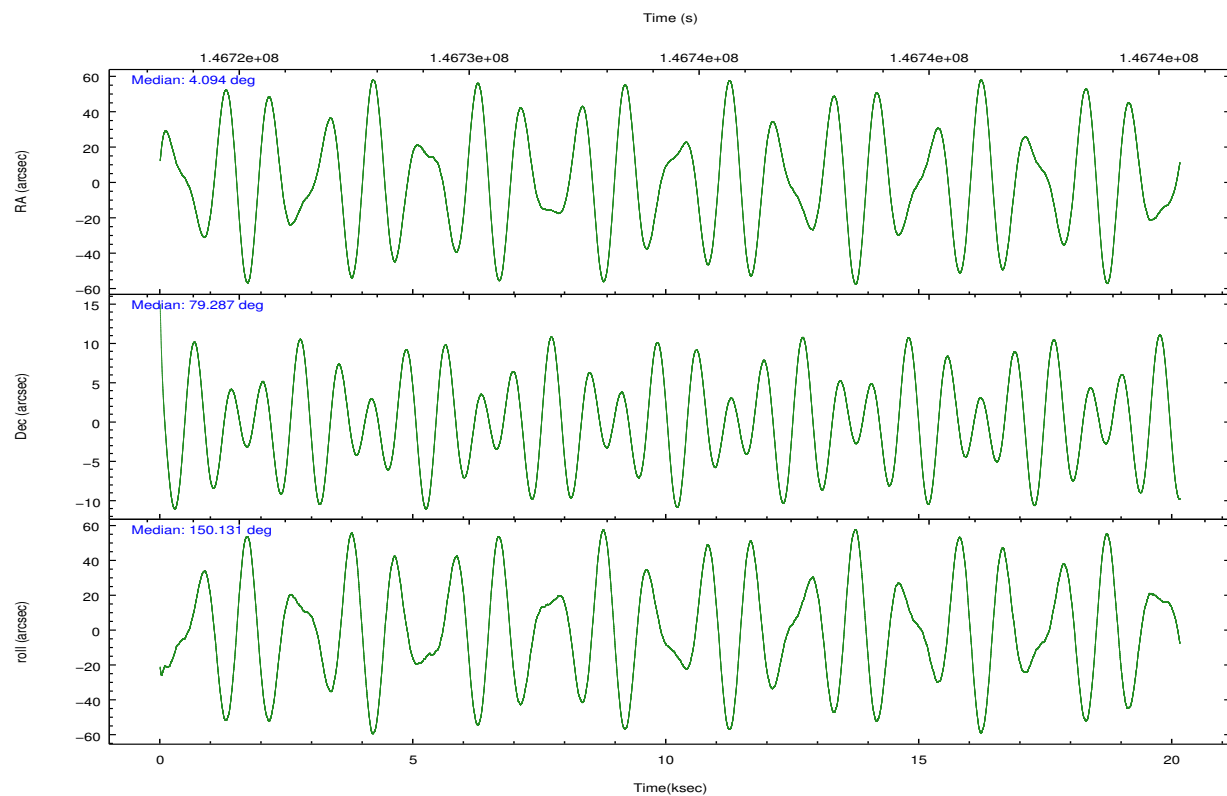
	ccd 2	ccd 3	ccd 5	ccd 6	ccd 7	ccd 8		ccd 2	ccd 3	ccd 5	ccd 6	ccd 7	ccd 8
level 1 events	123333	105000	47396	116217	29526	250423	grade 0 events	4582	3681	3491	5525	3215	41438
rejected events	112799	97849	21359	105716	10107	105017		3%	3%	7%	4%	10%	16%
rejected %	91%	93%	45%	90%	34%	41%	grade 1 events	61	48	125	62	78	385
								0%	0%	0%	0%	0%	0%
							grade 2 events	3029	1322	8432	2544	4674	17723
								2%	1%	17%	2%	15%	7%
							grade 3 events	745	785	1751	820	1948	31616
								0%	0%	3%	0%	6%	12%
							grade 4 events	1248	729	1746	840	1937	27651
								1%	0%	3%	0%	6%	11%
							grade 5 events	705	661	3743	649	2406	2884
								0%	0%	7%	0%	8%	1%
							grade 6 events	937	644	10646	775	7666	27110
								0%	0%	22%	0%	25%	10%
							grade 7 events	112026	97130	17462	105002	7602	101616
								90%	92%	36%	90%	25%	40%

2.2 Compared Parameters

Parameter	Planned	Actual	Parameter	Planned	Actual
Instrument	ACIS	ACIS	Obspar format version number	7	7
Detector	ACIS-235678	ACIS-235678	Obspar file type	PREDICTED	ACTUAL
Grating	NONE	NONE	Obspar update status	NONE	UPDATED
Data mode	VFAINT	VFAINT	Number of optional ACIS chips dropped	0	0
Observation mode	POINTING	POINTING	On-chip summing requested	N	N
[deg] Pointing RA	4.238305	4.091776904925098	Subarray requested	NONE	NONE
[deg] Pointing Dec	79.287718	79.28733348582161	Alternating exposures requested	N	N
[deg] Pointing Roll	149.835223	150.1358098273788	[s] Primary exposure time	0.000000	3.2
[mm] SIM focus pos	-0.684267	-0.6828225247311905			
[mm] SIM defocus	0	0.001444936568705701			
[mm] SIM translation stage pos	-190.132523	-190.1400660498719			
[mm] SIM translation stage offset	0	0.00754346686406393			
[s] Observation start time (MET)	146724452.184000	146723381.78364			
Observation start date	2002-08-26T04:46:28	2002-08-26T04:29:41			
[s] Observation end time (MET)	146744452.184000	146744872.44702			
Observation end date	2002-08-26T10:19:48	2002-08-26T10:27:52			
Read mode	TIMED	TIMED			

2.3 Aspect



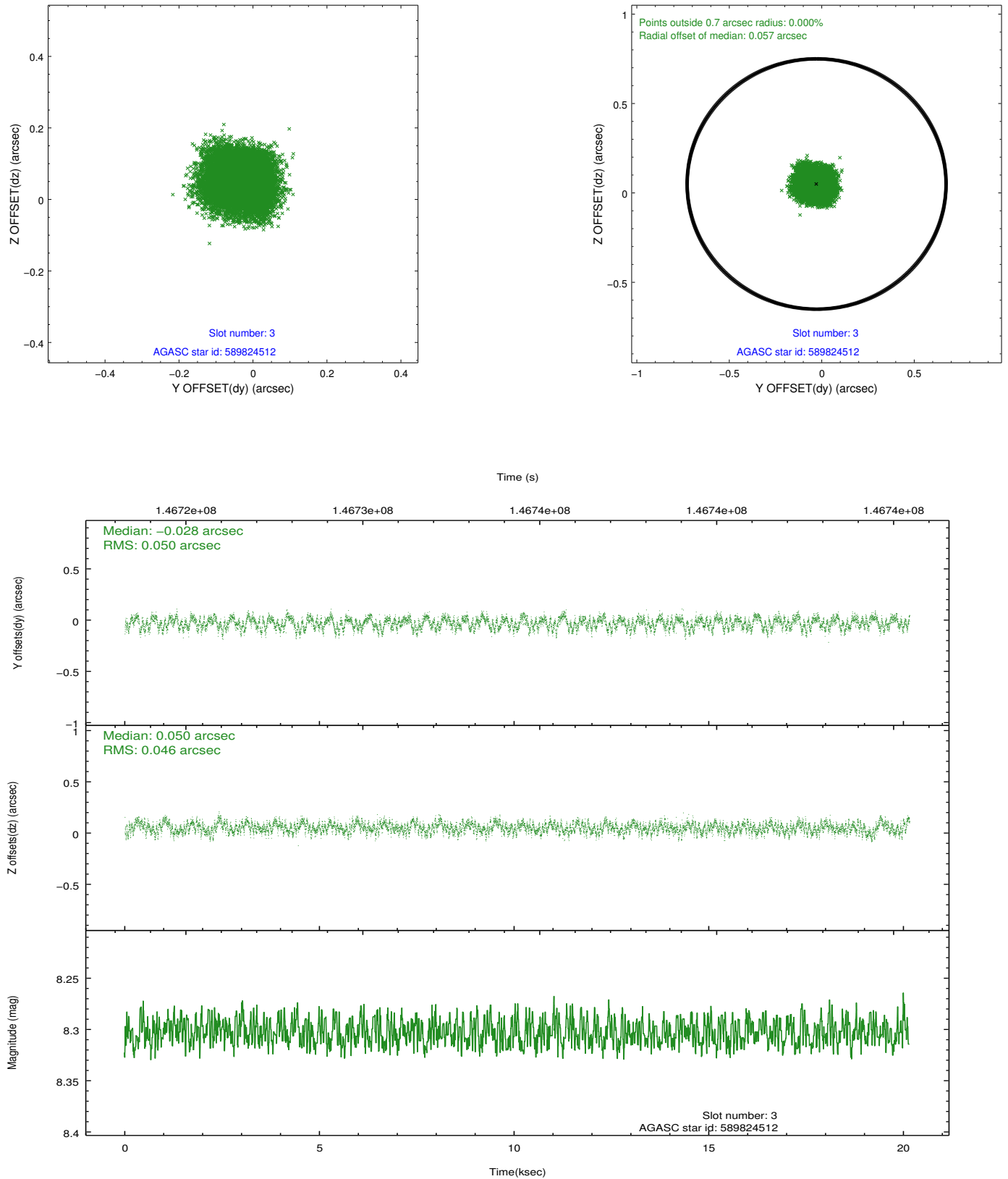


Slot Statistics

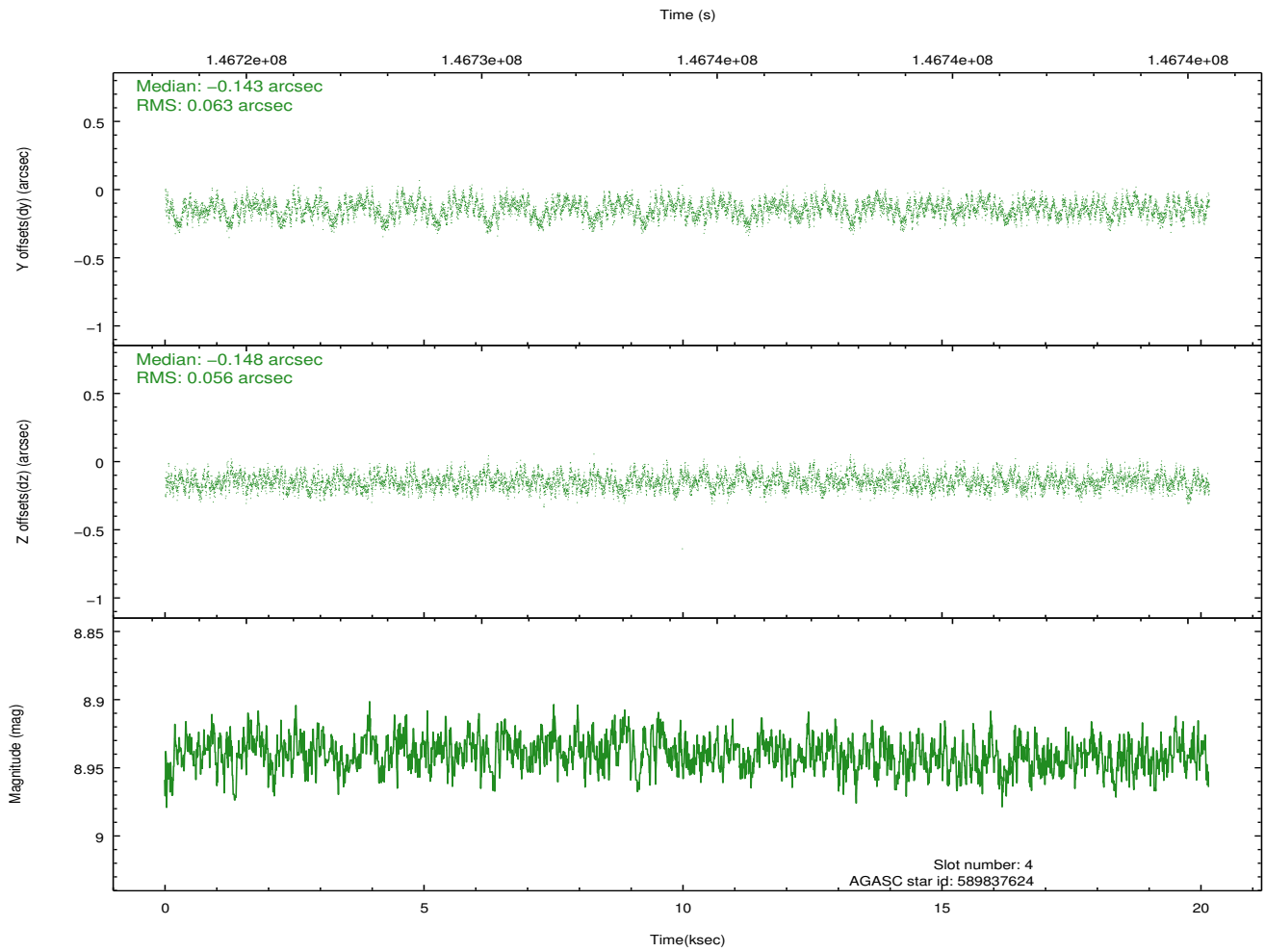
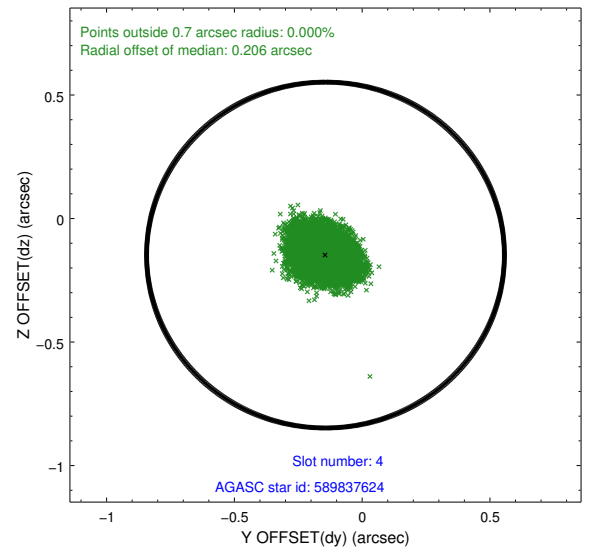
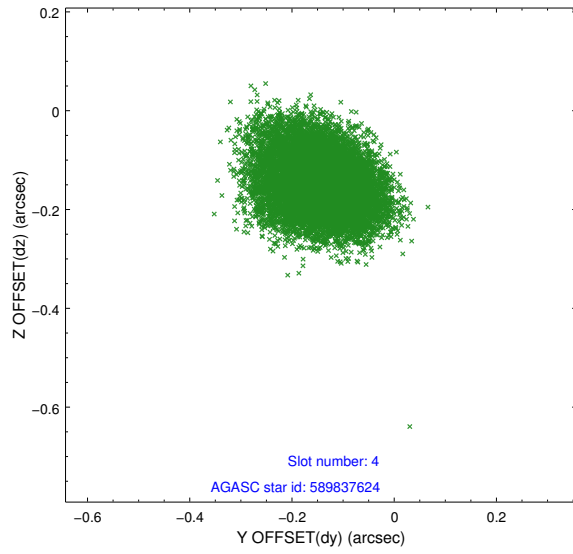
slot	status	id	mag	n_pts	med_dy	med_dz	dr1	dr2	ra	dec	mean_y	mean_z
0	FID	ACIS-S-1	7.19	4916	0.035	-0.026	0.014	0.023	0.000000	0.000000	940.97	-1724.50
1	FID	ACIS-S-5	7.24	4917	-0.008	0.045	0.007	0.012	0.000000	0.000000	-1807.93	172.98
2	FID	ACIS-S-6	7.36	4916	-0.048	-0.009	0.016	0.031	0.000000	0.000000	406.29	817.06
3	GUIDE	589824512	8.30	9831	-0.028	0.050	0.074	0.113	6.067443	79.539008	-568.05	-1398.46
4	GUIDE	589837624	8.94	9829	-0.143	-0.148	0.092	0.142	1.382205	78.951069	1119.27	1996.23
5	GUIDE	589319376	9.11	9828	0.050	-0.071	0.098	0.156	5.425379	78.479458	-2194.33	2080.01
6	GUIDE	604251920	9.38	9828	0.038	0.047	0.079	0.127	359.732431	78.985756	2191.74	2393.15
7	GUIDE	589827232	9.55	9820	0.085	0.115	0.085	0.140	7.115440	79.300655	-1613.00	-1046.36

2.4 Star Slots

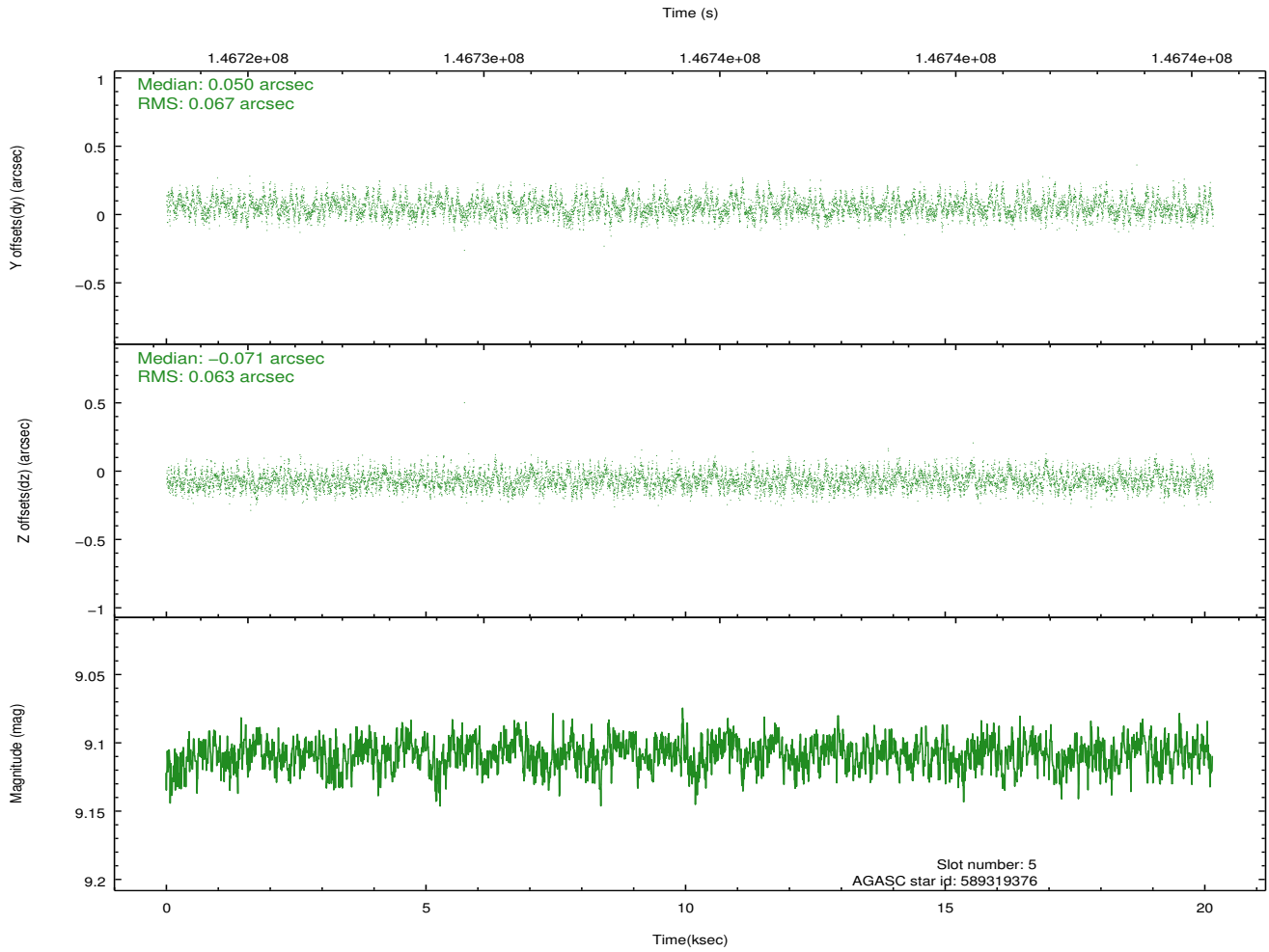
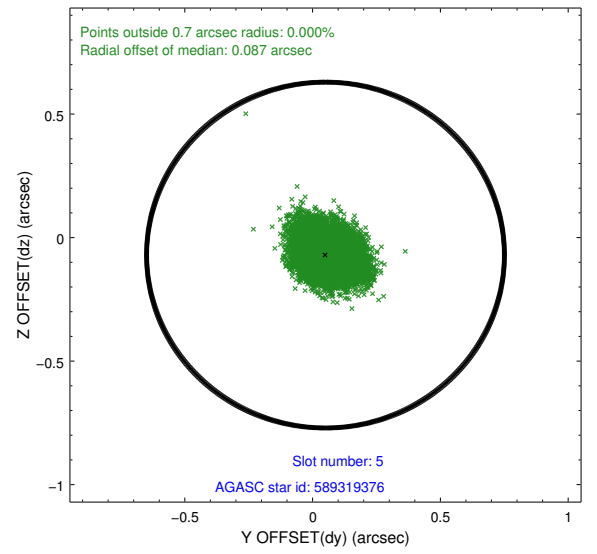
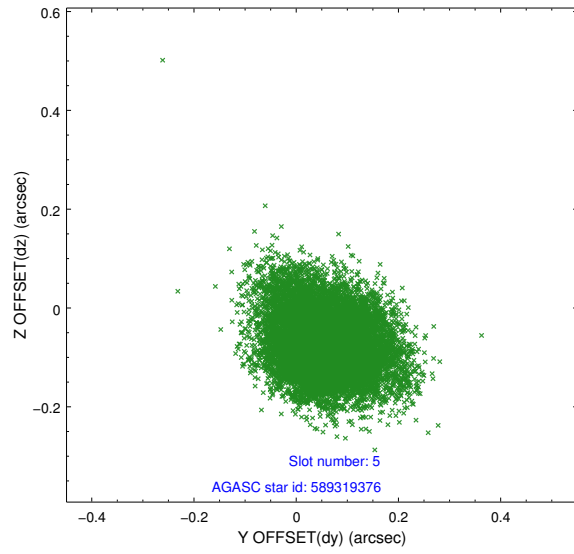
2.4.1 Slot 3



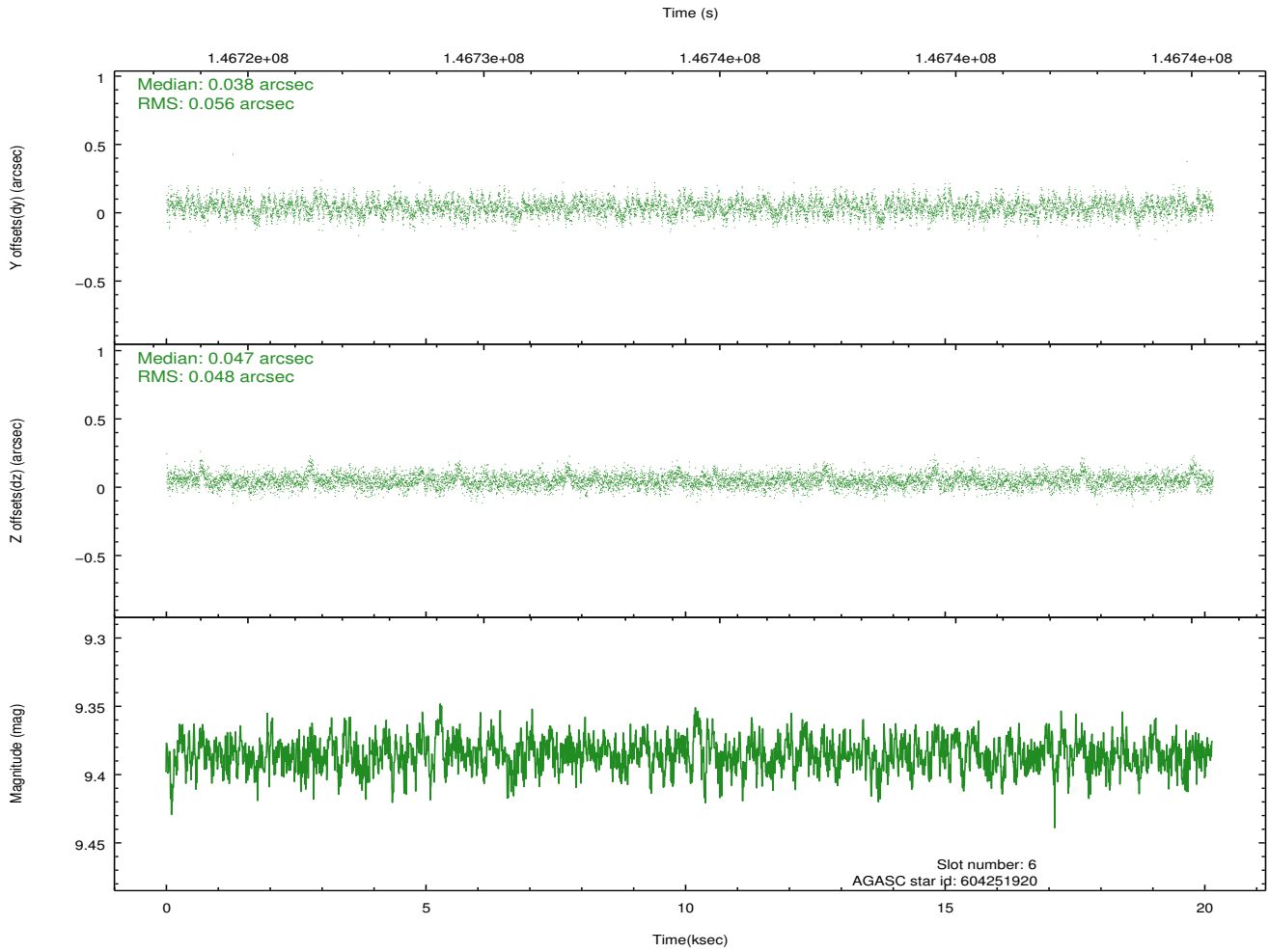
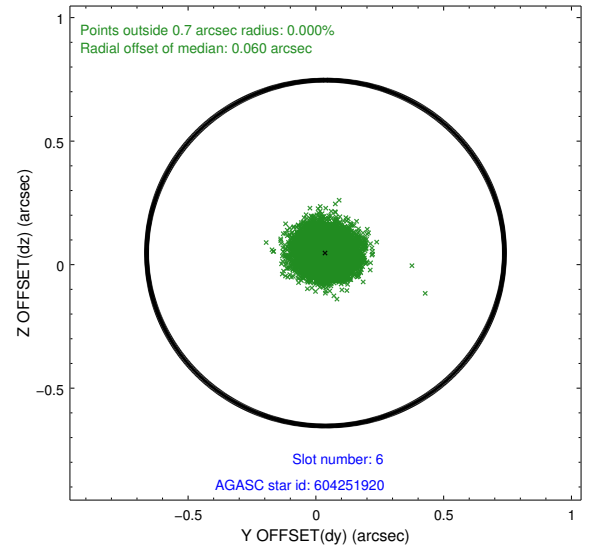
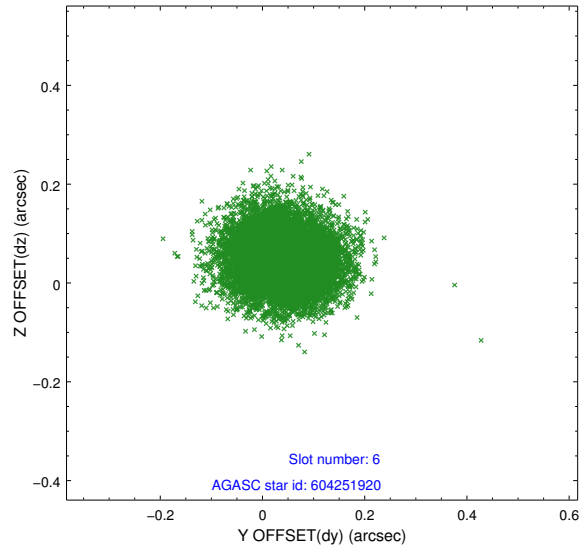
2.4.2 Slot 4



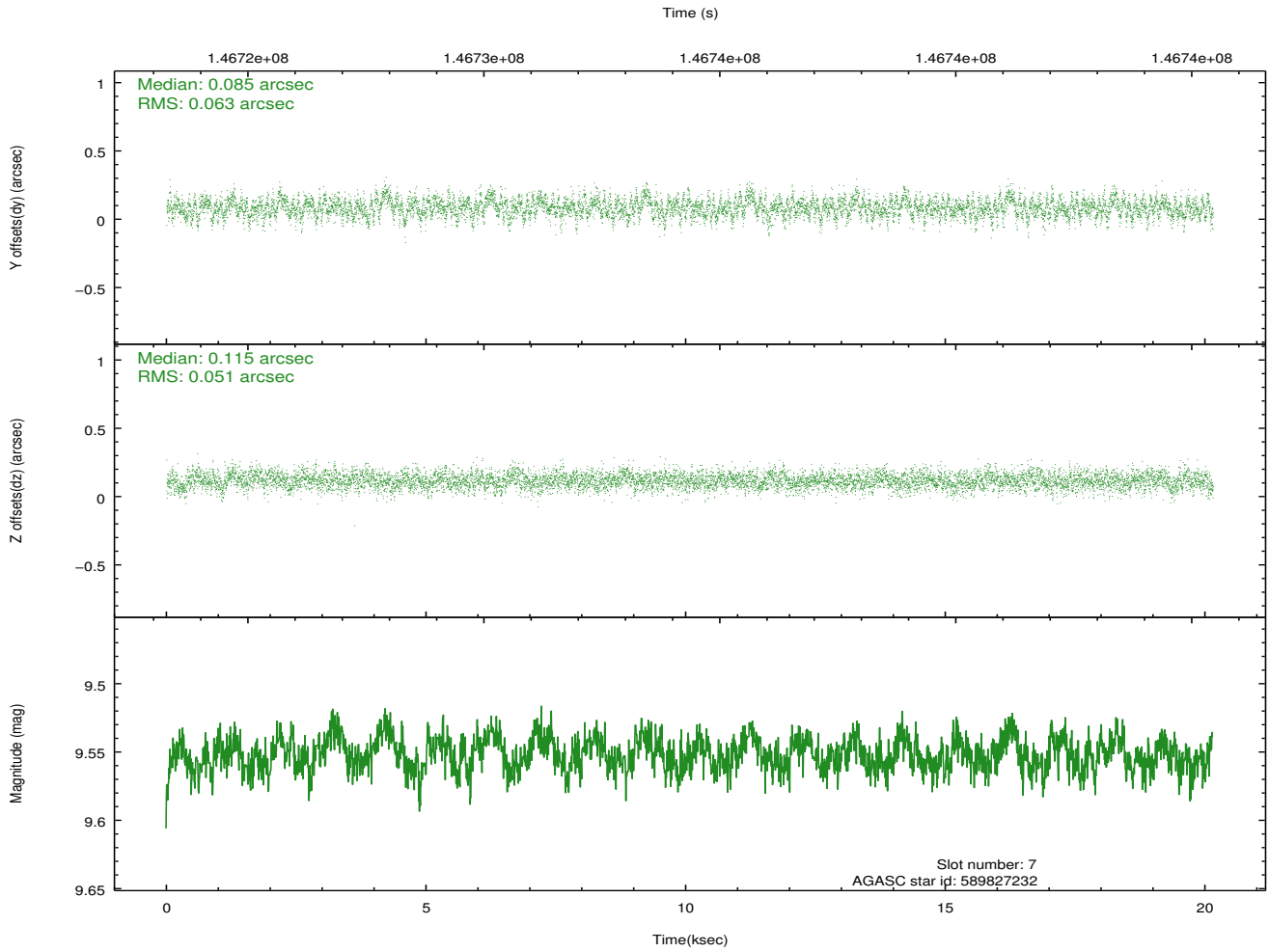
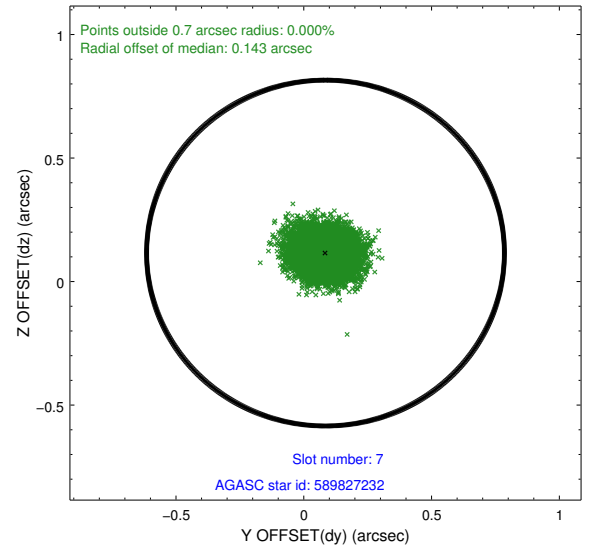
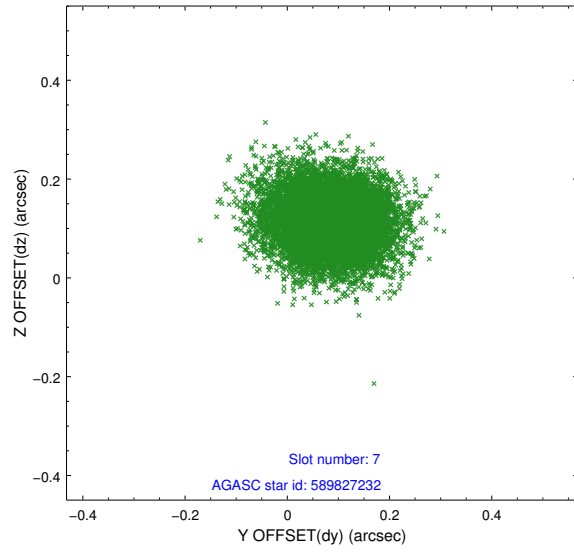
2.4.3 Slot 5



2.4.4 Slot 6

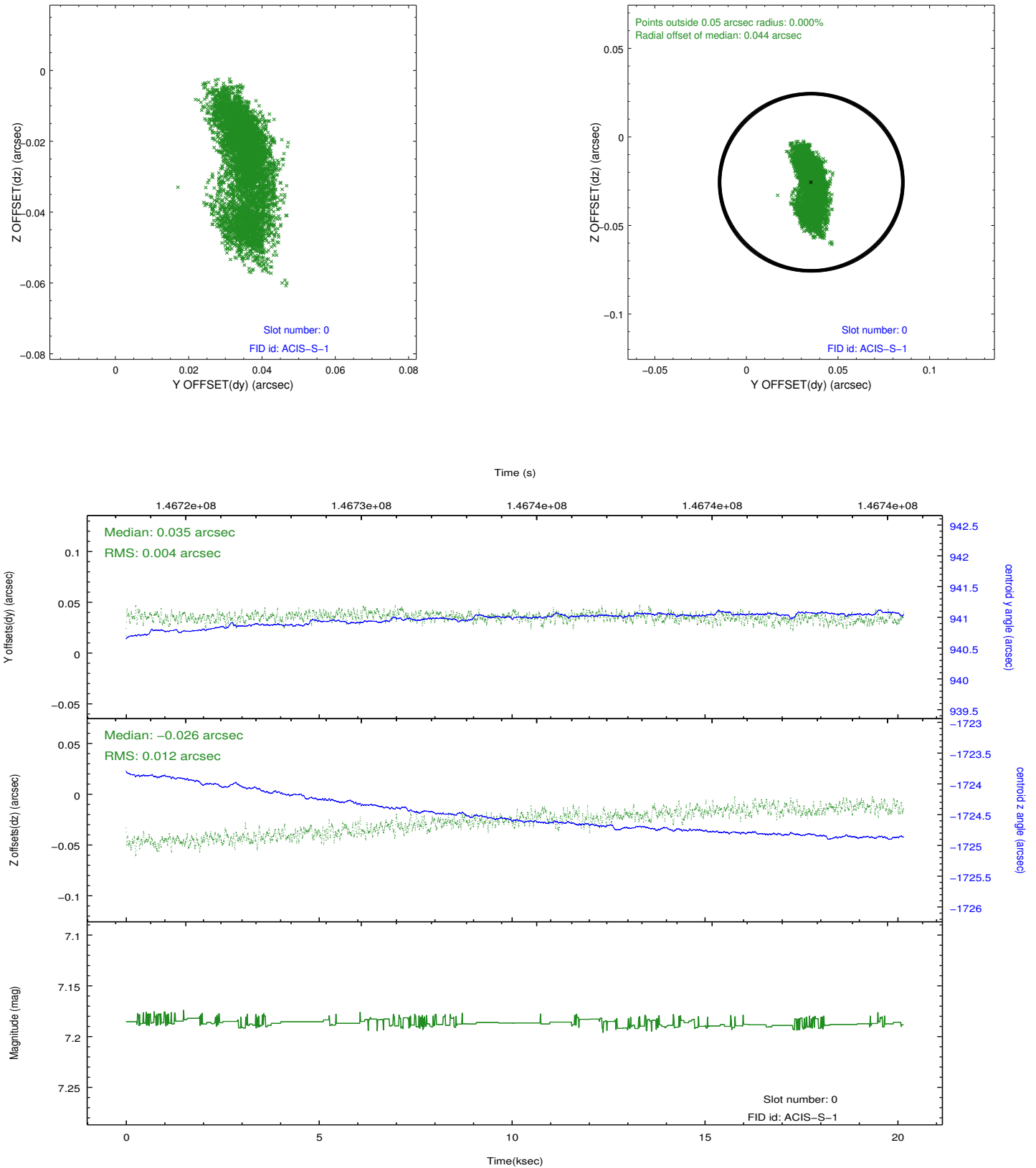


2.4.5 Slot 7

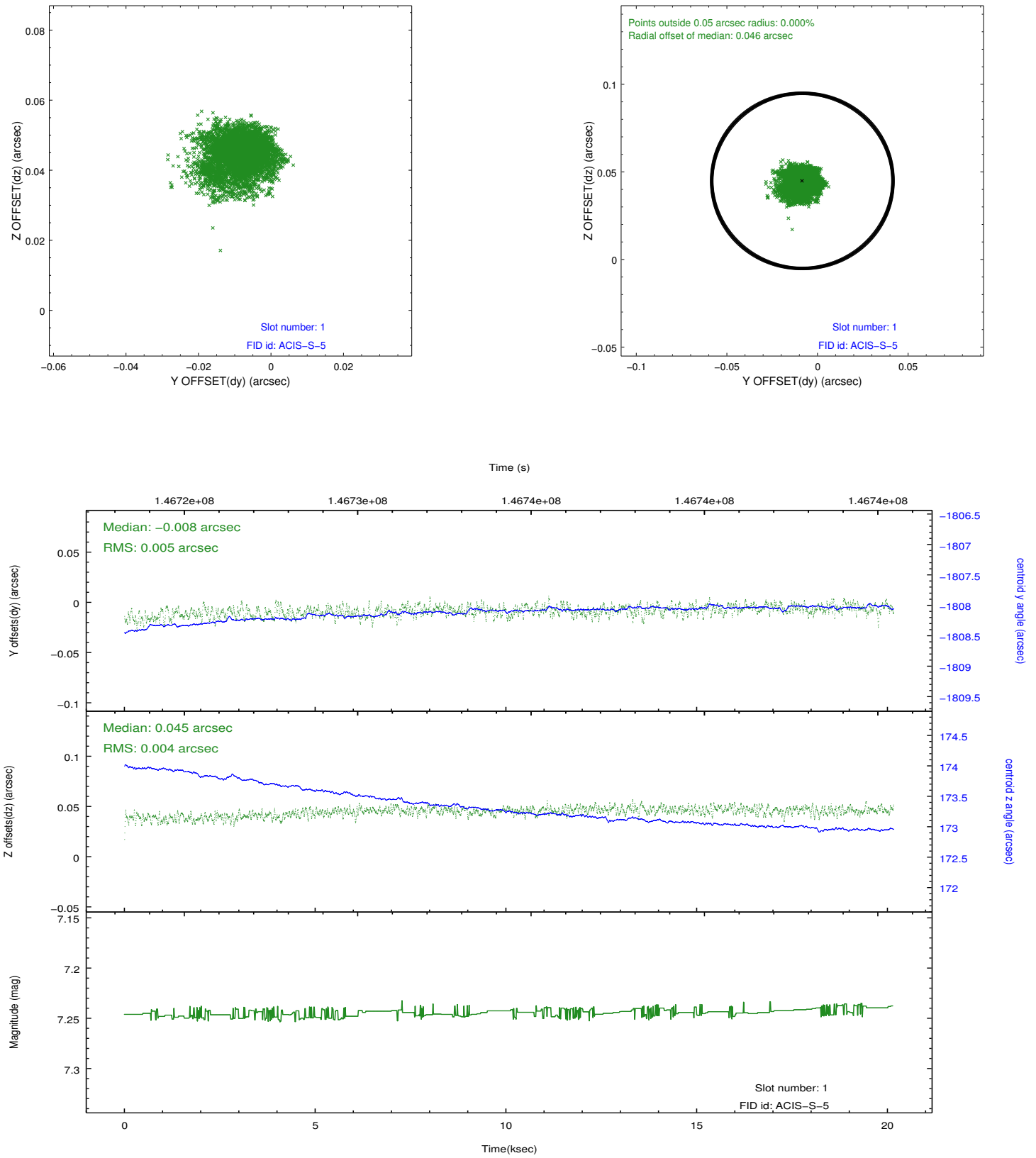


2.5 FID Slots

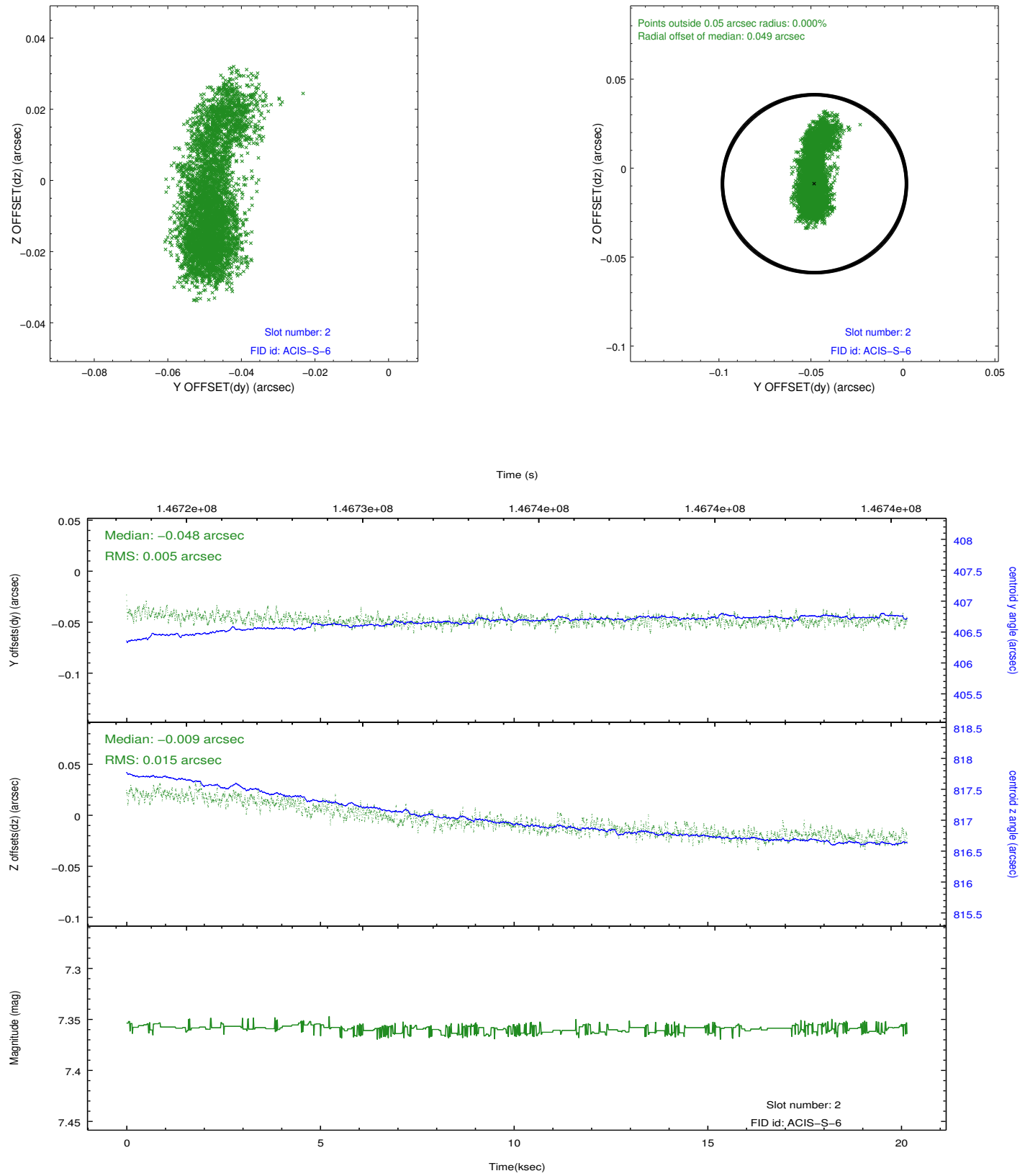
2.5.1 Slot 0



2.5.2 Slot 1



2.5.3 Slot 2



A Summary

A.1 Status

V&V Scientist	Jen Lauer
V&V Date (YYYY-MM-DD)	2012.10.23
V&V Edition	1
V&V Disposition and Status	OK
V&V Charge Time	20.153

A.2 Comments