

V&V Reference Report

L2 ASCDS Version : 8.4.5

Observation 3158 - L2 Version 3
Chandra X-Ray Center

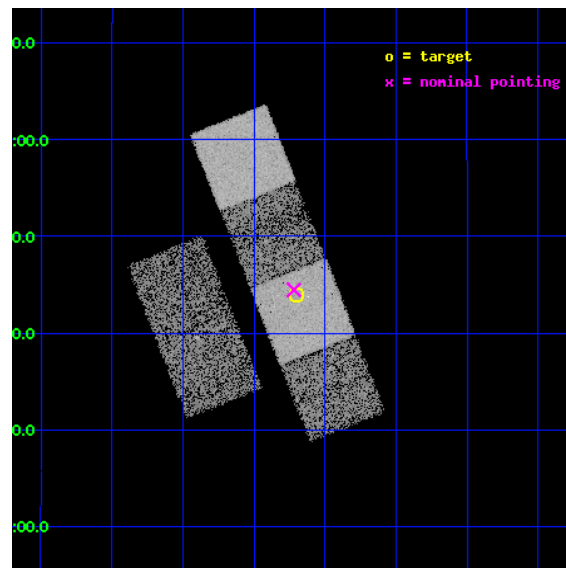
L2 Processing Date : Sep 30 2012

Contents

1	Front	2
2	OBI	3
2.1	OBI	3
2.1.1	Images	3
2.1.2	Bias	3
2.1.3	Parameters	4
2.1.4	Events	4
2.2	Compared Parameters	5
2.3	Aspect	6
2.4	Star Slots	9
2.4.1	Slot 3	9
2.4.2	Slot 4	10
2.4.3	Slot 5	11
2.4.4	Slot 6	12
2.4.5	Slot 7	13
2.5	FID Slots	14
2.5.1	Slot 0	14
2.5.2	Slot 1	15
2.5.3	Slot 2	16
A	Summary	17
A.1	Status	17
A.2	Comments	17

1 Front

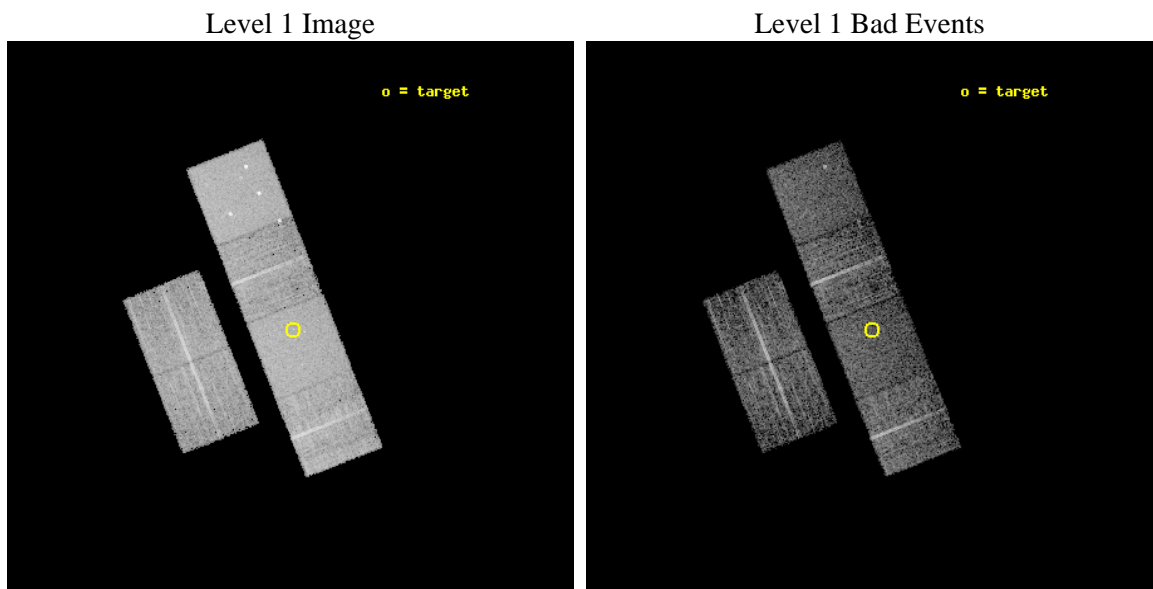
seq_num	700597	Sequence number
obs_id	3158	Observation id
title	A CHANDRA SURVEY OF THE MOST LUMINOUS QUASARS AT $Z > 4$	Proposal ti
observer	Professor Gordon Garmire	Principal investigator
object	PSS1326+0743	Source name
dtcycle	0	
cycle	P	events from which exps? Prim/Second/Both
ra_targ	201.549583	Observer's specified target RA [deg]
dec_targ	7.733056	Observer's specified target Dec [deg]
ra_nom	201.55475515458	Nominal RA [deg]
dec_nom	7.7413562276449	Nominal Dec [deg]
roll_nom	68.468576399704	Nominal Roll [deg]
revision	3	Processing version of data
ontime	5961.6000055373	Sum of GTIs [s]
livetime	5886.1106366226	Livetime [s]
ontime2	5961.6000055373	Sum of GTIs [s]
ontime3	5961.5305920541	Sum of GTIs [s]
ontime5	5961.6000055373	Sum of GTIs [s]
ontime6	5961.5716320574	Sum of GTIs [s]
ontime7	5961.6000055373	Sum of GTIs [s]
ontime8	5961.4895520508	Sum of GTIs [s]
l2events	76565	Number of level 2 events



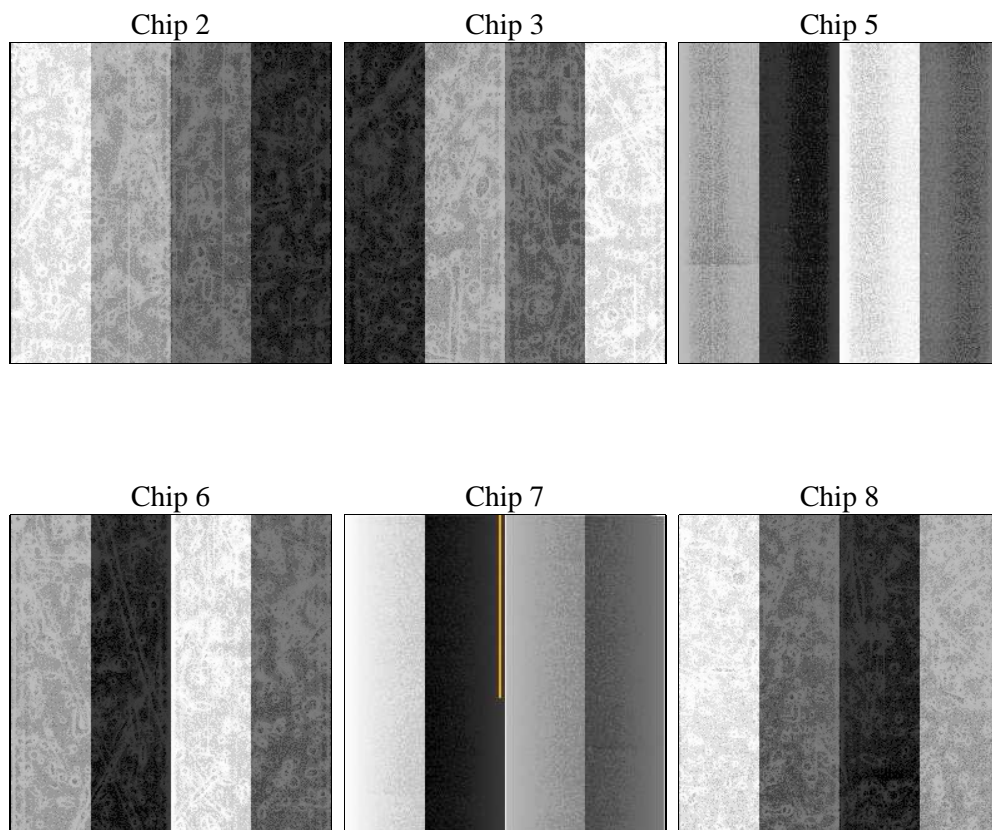
2 OBI

2.1 OBI

2.1.1 Images



2.1.2 Bias



2.1.3 Parameters

obi_num	0	Obi number	sched_exp_time	6000.000000	[s] Scheduled observation exposure time
ascdsver	8.4.5	Processing system revision	ontime	5961.6000055373	Sum of GTIs [s]
caldsver	4.5.2	 	ontime2	5961.6000055373	Sum of GTIs [s]
date	2012-09-30T03:54:02	Date and time of file creation	ontime3	5961.5305920541	Sum of GTIs [s]
revision	3	Processing version of data	ontime5	5961.6000055373	Sum of GTIs [s]
			ontime6	5961.5716320574	Sum of GTIs [s]
			ontime7	5961.6000055373	Sum of GTIs [s]
			ontime8	5961.4895520508	Sum of GTIs [s]
			l1events	292732	Number of level 1 events

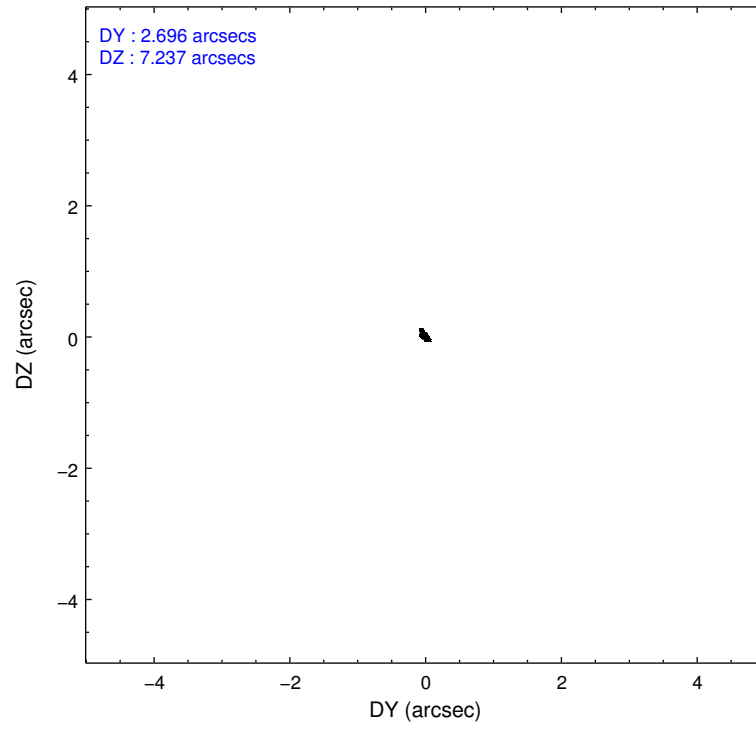
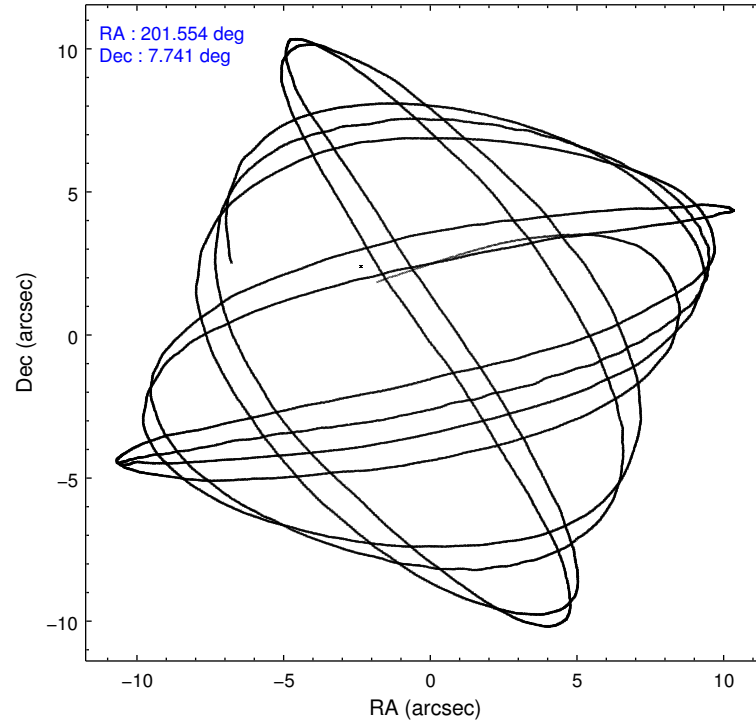
2.1.4 Events

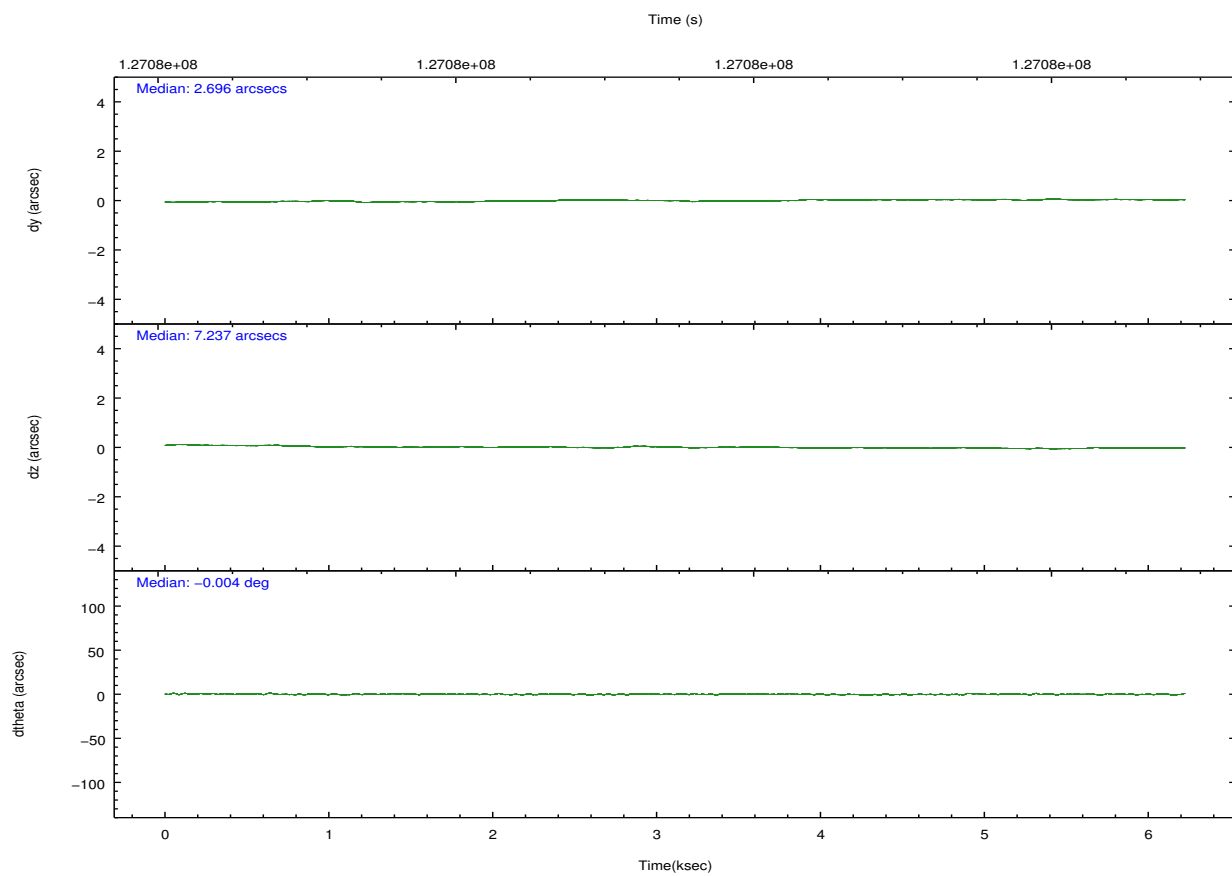
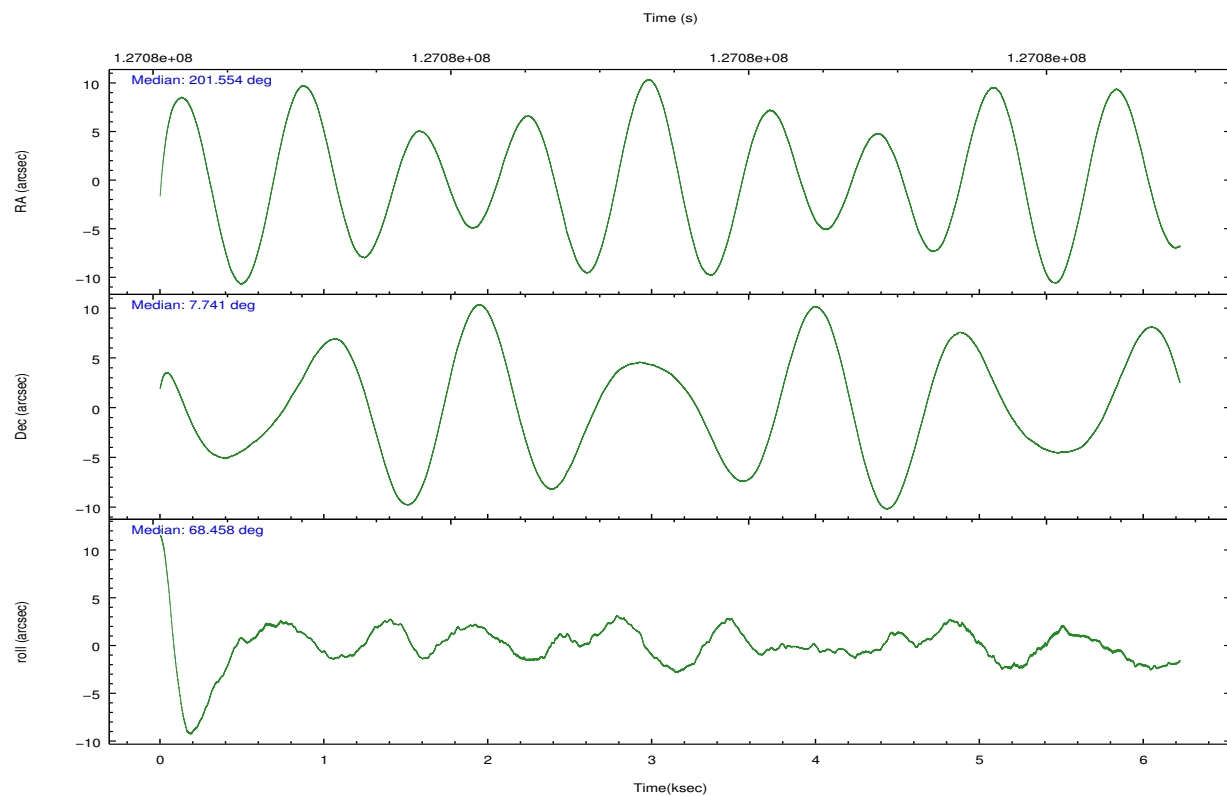
	ccd 2	ccd 3	ccd 5	ccd 6	ccd 7	ccd 8		ccd 2	ccd 3	ccd 5	ccd 6	ccd 7	ccd 8
level 1 events	40922	38849	61786	41550	55824	53801	grade 0 events	2674	2613	4903	3144	3021	5489
rejected events	35098	33221	30070	35154	28763	38604		6%	6%	7%	7%	5%	10%
rejected %	85%	85%	48%	84%	51%	71%	grade 1 events	23	19	124	26	38	35
								0%	0%	0%	0%	0%	0%
							grade 2 events	1323	1209	9118	1350	5253	2991
								3%	3%	14%	3%	9%	5%
							grade 3 events	423	445	1433	498	2322	1816
								1%	1%	2%	1%	4%	3%
							grade 4 events	449	442	1394	449	2393	1604
								1%	1%	2%	1%	4%	2%
							grade 5 events	1274	1461	4253	1569	4900	2125
								3%	3%	6%	3%	8%	3%
							grade 6 events	957	924	14905	964	14093	3307
								2%	2%	24%	2%	25%	6%
							grade 7 events	33799	31736	25656	33550	23804	36434
								82%	81%	41%	80%	42%	67%

2.2 Compared Parameters

Parameter	Planned	Actual	Parameter	Planned	Actual
Instrument	ACIS	ACIS	Obspar format version number	7	7
Detector	ACIS-235678	ACIS-235678	Obspar file type	PREDICTED	ACTUAL
Grating	NONE	NONE	Obspar update status	NONE	UPDATED
Data mode	FAINT	FAINT	Number of optional ACIS chips dropped	0	0
Observation mode	POINTING	POINTING	On-chip summing requested	N	N
[deg] Pointing RA	201.559119	201.5547551545842	Subarray requested	NONE	NONE
[deg] Pointing Dec	7.714415	7.741356227644928	Alternating exposures requested	N	N
[deg] Pointing Roll	68.311343	68.46857639970399	[s] Primary exposure time	0.000000	3.2
[mm] SIM focus pos	-0.684267	-0.6828225247311905			
[mm] SIM defocus	0	0.001444936568705701			
[mm] SIM translation stage pos	-190.132523	-190.1400660498719			
[mm] SIM translation stage offset	0	0.00754346686406393			
[s] Observation start time (MET)	127076584.184000	127075595.70831			
Observation start date	2002-01-10T19:02:00	2002-01-10T18:46:35			
[s] Observation end time (MET)	127082584.184000	127083229.90862			
Observation end date	2002-01-10T20:42:00	2002-01-10T20:53:49			
Read mode	TIMED	TIMED			

2.3 Aspect



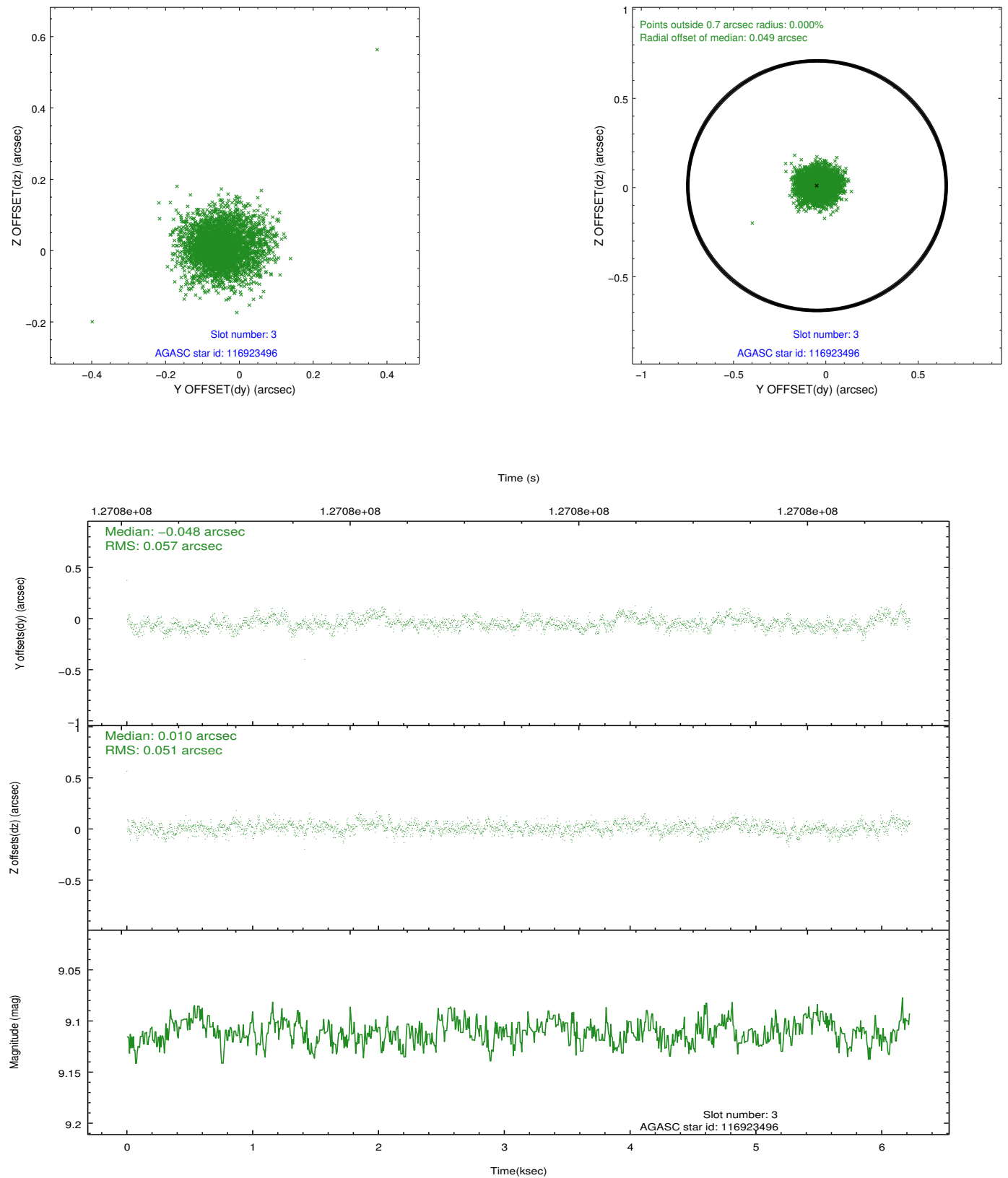


Slot Statistics

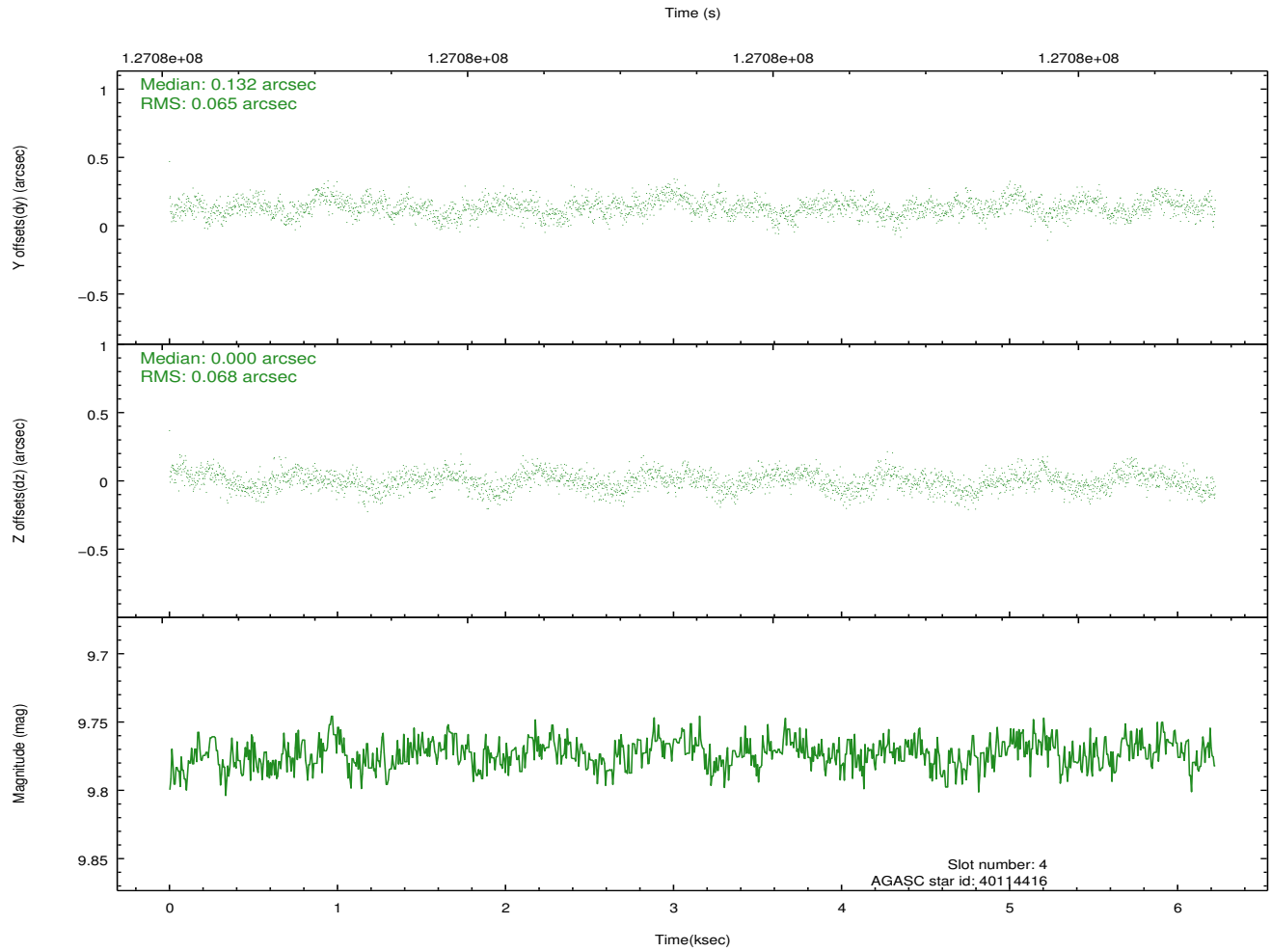
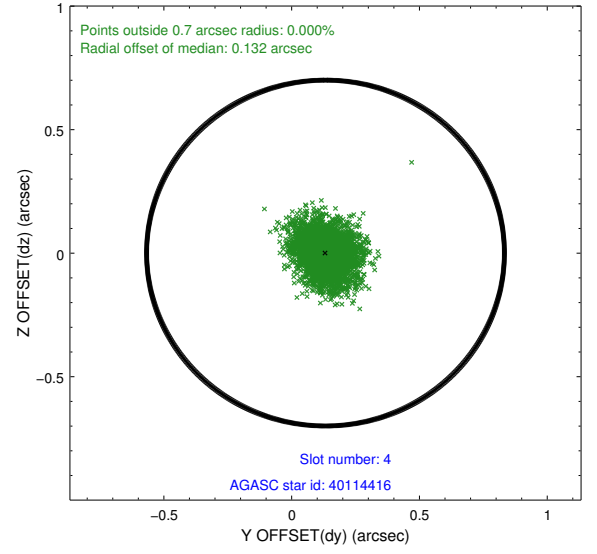
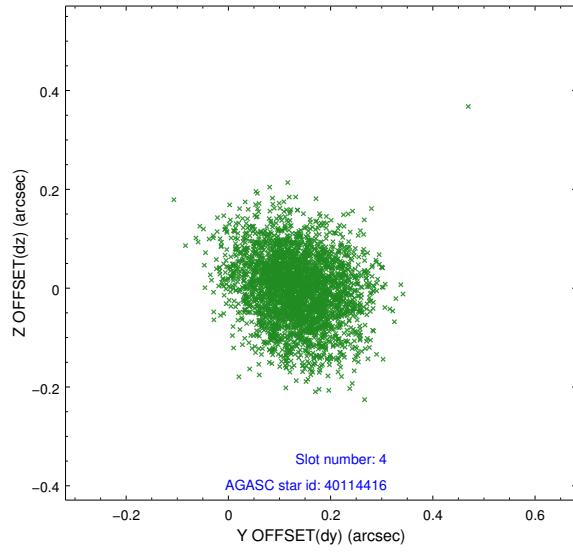
slot	status	id	mag	n_pts	med_dy	med_dz	dr1	dr2	ra	dec	mean_y	mean_z
0	FID	ACIS-S-2	7.11	1518	-0.011	0.007	0.006	0.010	0.000000	0.000000	-755.34	-1728.41
1	FID	ACIS-S-4	7.20	1518	-0.048	0.003	0.006	0.010	0.000000	0.000000	2157.48	179.09
2	FID	ACIS-S-5	7.23	1518	0.027	-0.002	0.007	0.010	0.000000	0.000000	-1806.92	173.84
3	GUIDE	116923496	9.11	3034	-0.048	0.010	0.080	0.131	202.027748	7.649396	402.90	-1640.58
4	GUIDE	40114416	9.77	3035	0.132	0.000	0.100	0.163	201.610541	7.400035	-982.09	-590.36
5	GUIDE	116791824	9.19	3033	-0.056	-0.191	0.080	0.127	201.287828	7.911044	301.27	1159.42
6	GUIDE	40113544	7.94	3036	0.097	0.000	0.060	0.099	201.675538	7.453262	-718.35	-734.01
7	GUIDE	116923528	9.77	3033	-0.136	0.183	0.122	0.194	202.304546	7.771186	1176.13	-2395.17

2.4 Star Slots

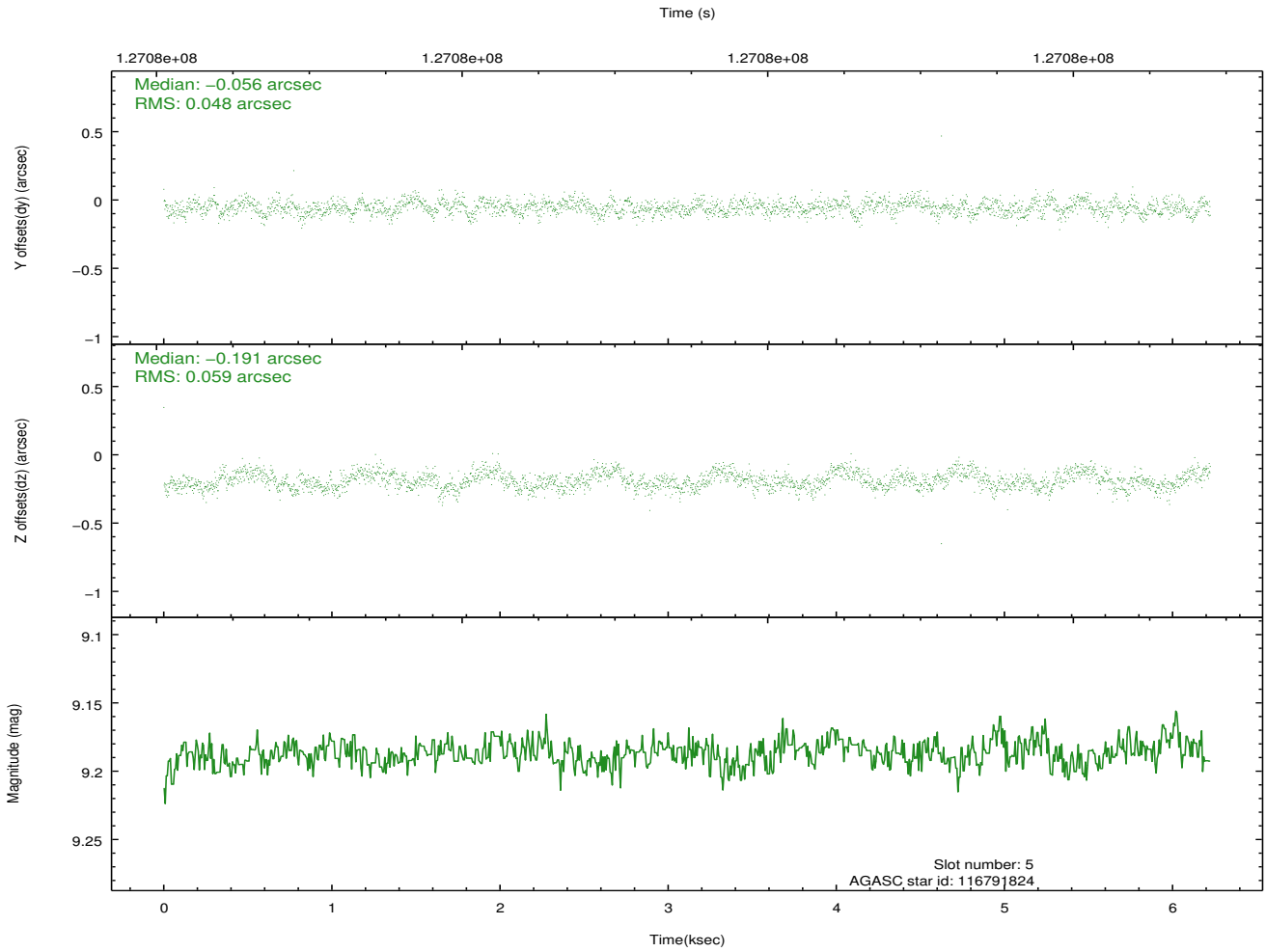
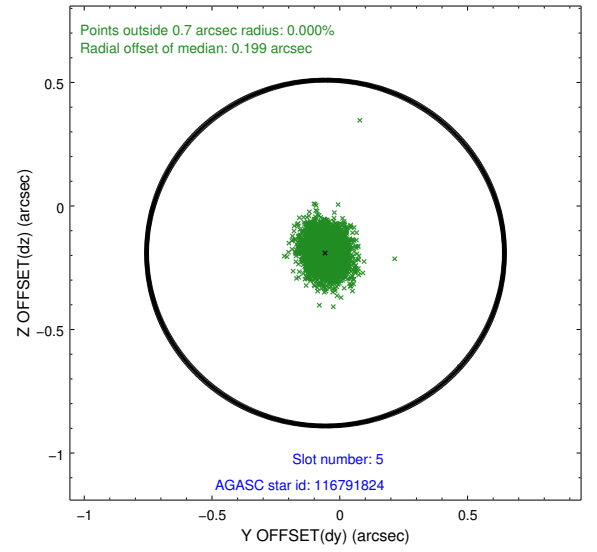
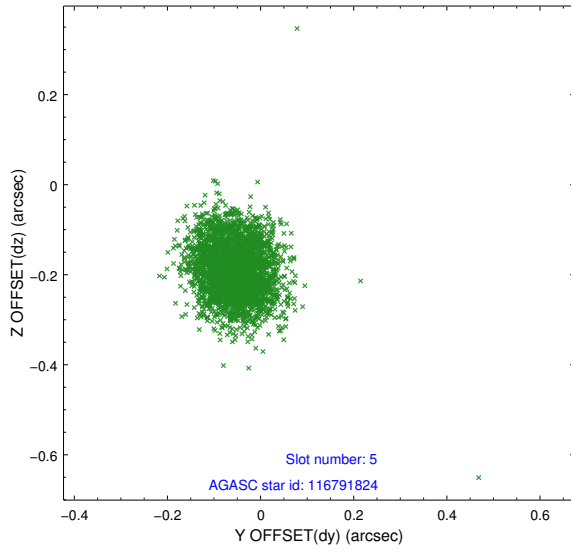
2.4.1 Slot 3



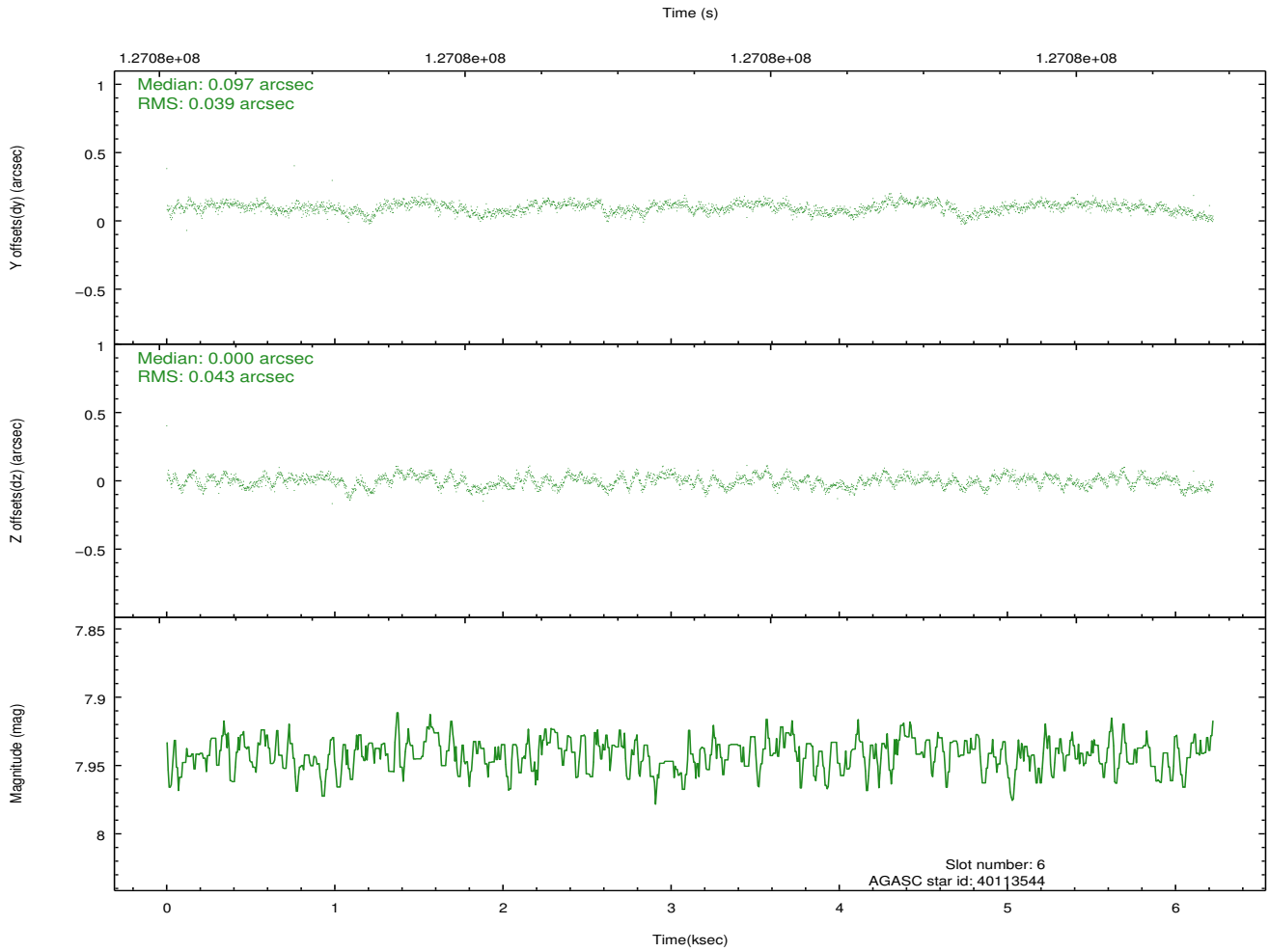
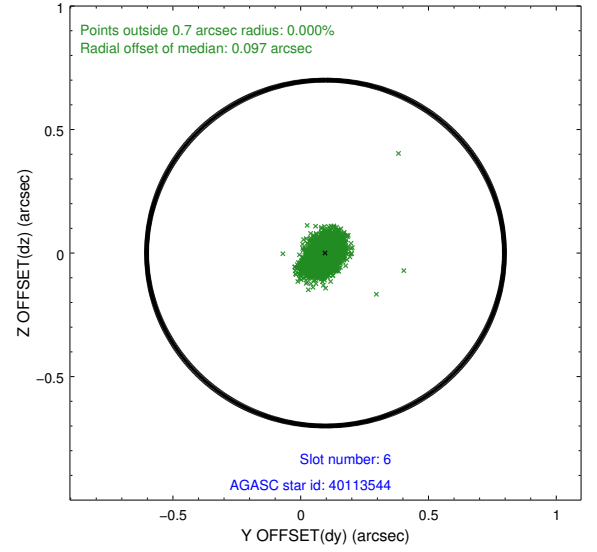
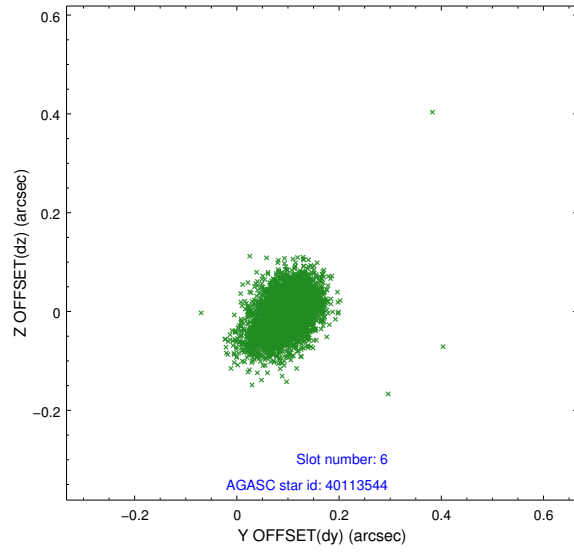
2.4.2 Slot 4



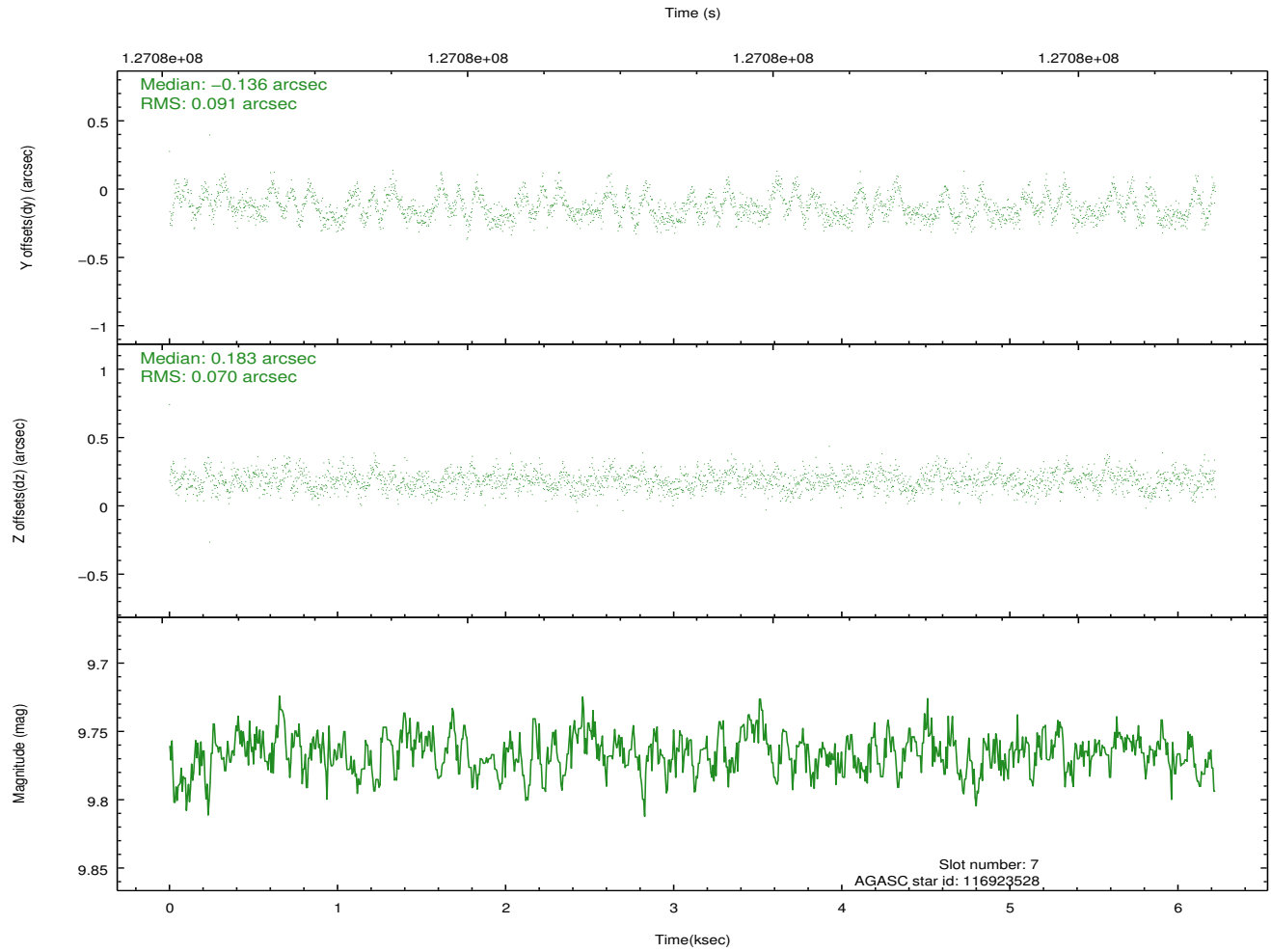
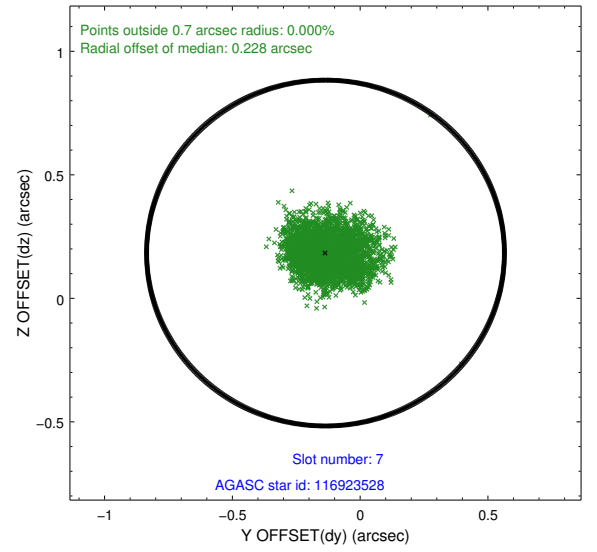
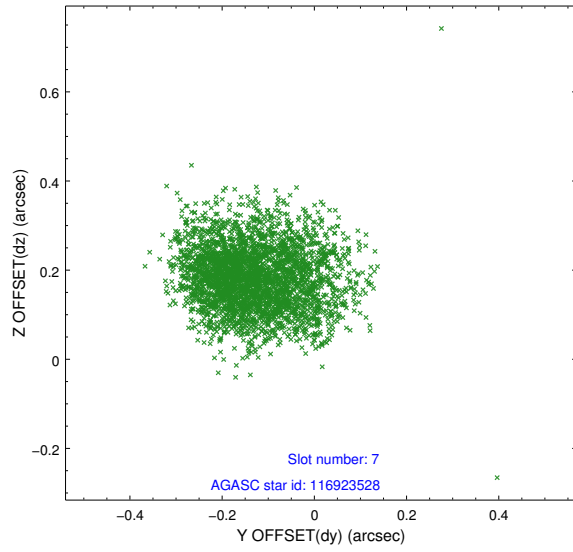
2.4.3 Slot 5



2.4.4 Slot 6

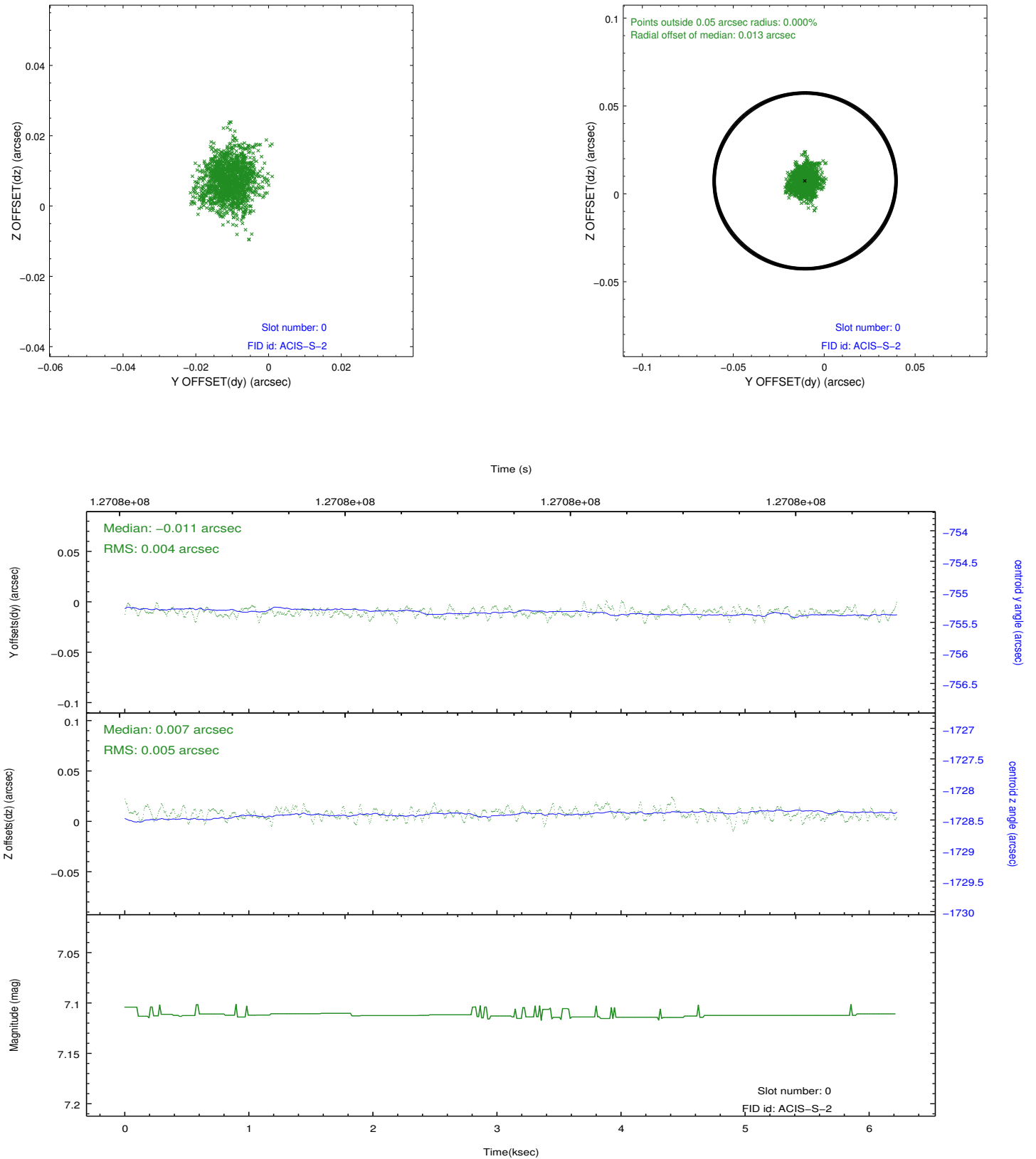


2.4.5 Slot 7

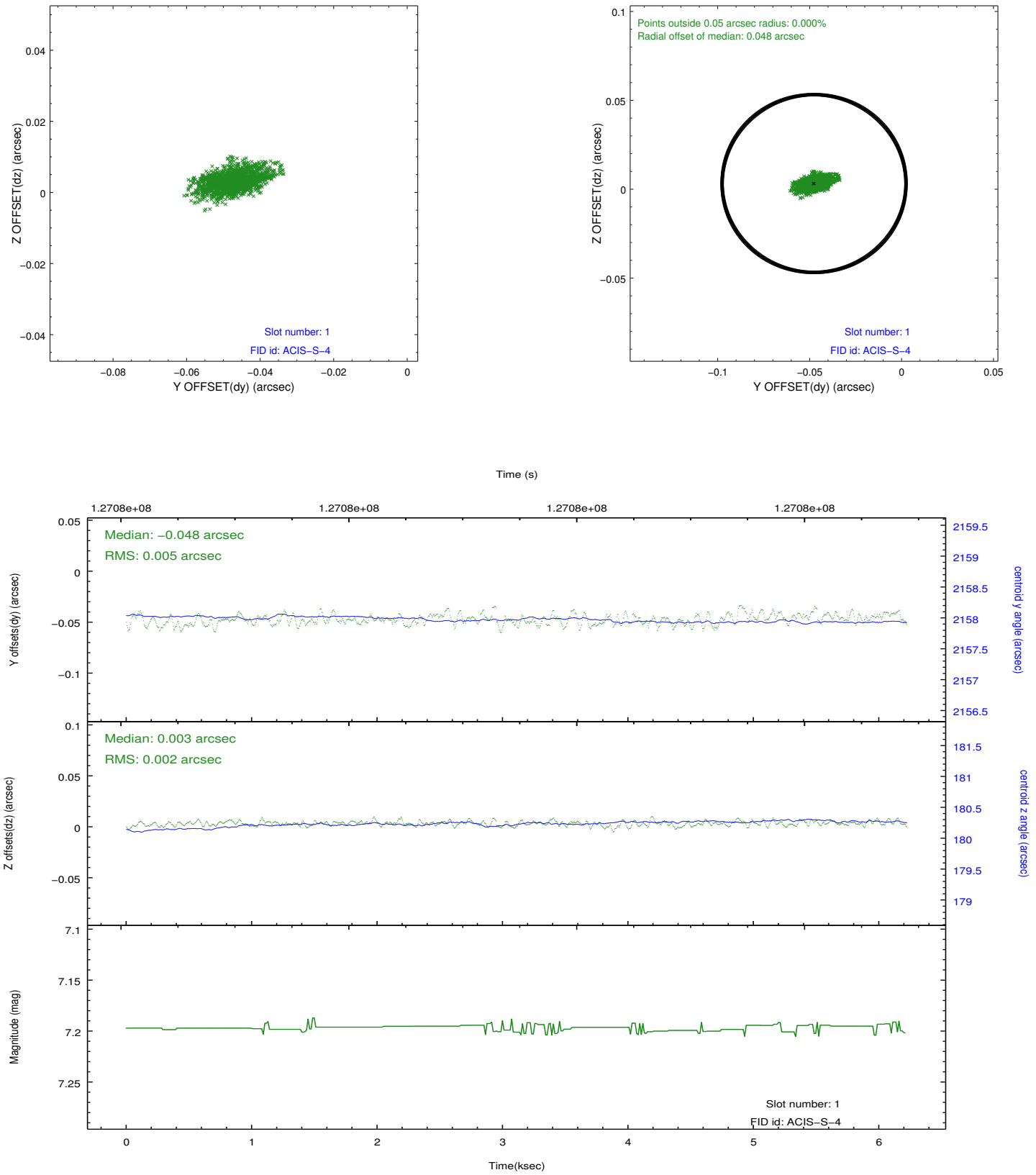


2.5 FID Slots

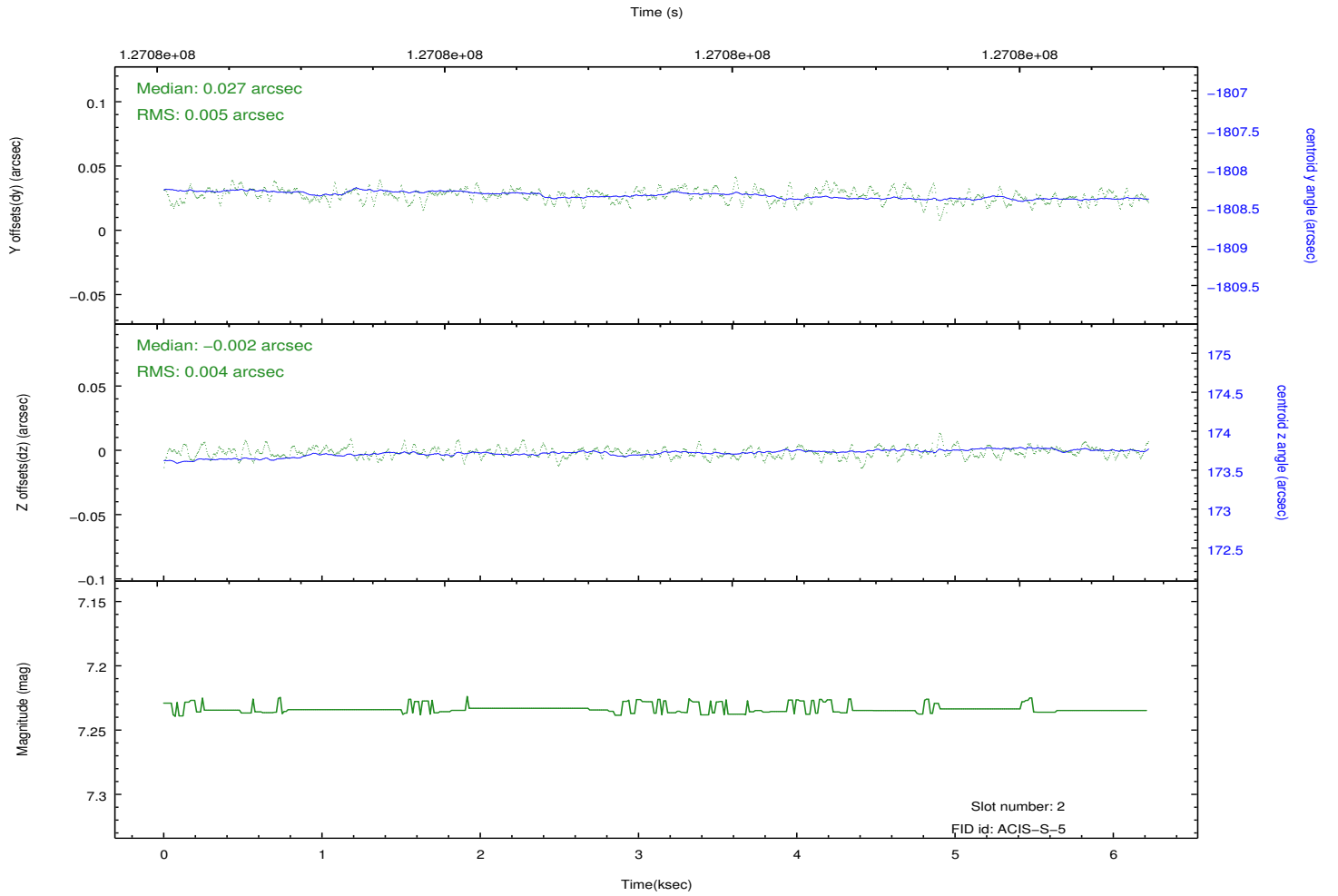
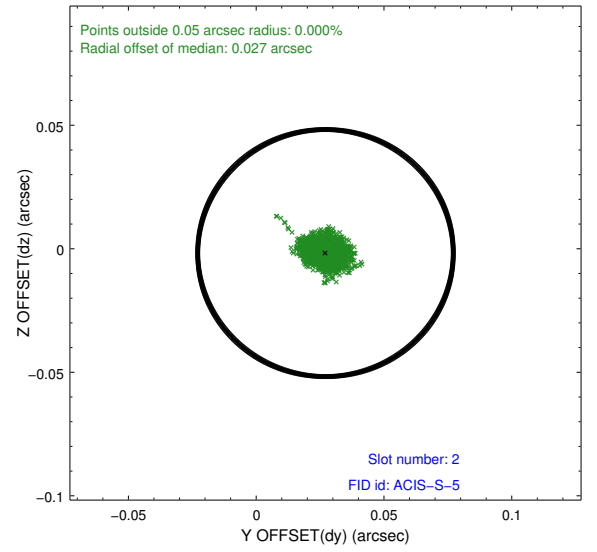
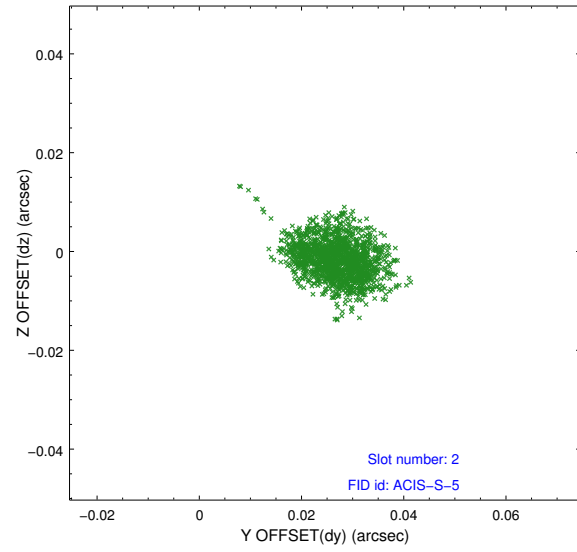
2.5.1 Slot 0



2.5.2 Slot 1



2.5.3 Slot 2



A Summary

A.1 Status

V&V Scientist	Jen Lauer
V&V Date (YYYY-MM-DD)	2012.10.02
V&V Edition	1
V&V Disposition and Status	OK
V&V Charge Time	5.964

A.2 Comments