

V&V Reference Report

L2 ASCDS Version : 8.4.5

Observation 3154 - L2 Version 3
Chandra X-Ray Center

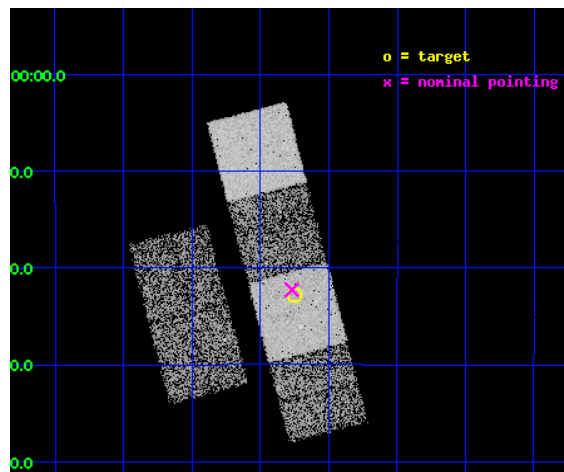
L2 Processing Date : Oct 14 2012

Contents

1	Front	2
2	OBI	3
2.1	OBI	3
2.1.1	Images	3
2.1.2	Bias	3
2.1.3	Parameters	4
2.1.4	Events	4
2.2	Compared Parameters	5
2.3	Aspect	6
2.4	Star Slots	9
2.4.1	Slot 3	9
2.4.2	Slot 4	10
2.4.3	Slot 5	11
2.4.4	Slot 6	12
2.5	FID Slots	13
2.5.1	Slot 0	13
2.5.2	Slot 1	14
2.5.3	Slot 2	15
A	Summary	16
A.1	Status	16
A.2	Comments	16

1 Front

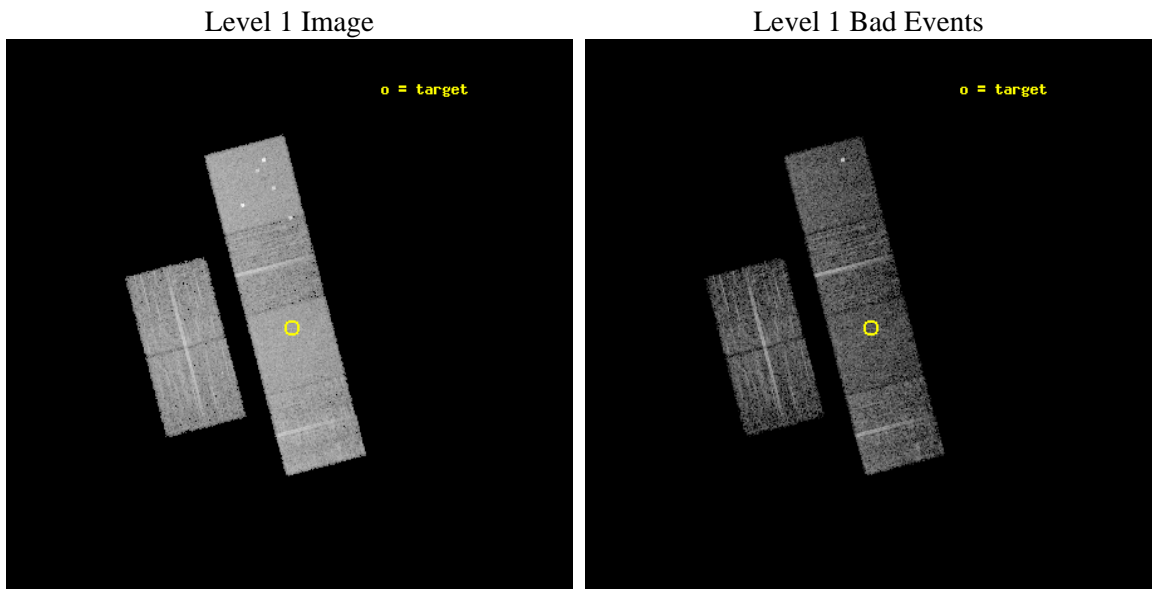
seq_num	700593	Sequence number
obs_id	3154	Observation id
title	A CHANDRA SURVEY OF THE MOST LUMINOUS QUASARS AT $Z > 4$	Proposal ti
observer	Professor Gordon Garmire	Principal investigator
object	BR0308-1734	Source name
dtcycle	0	
cycle	P	events from which exps? Prim/Second/Both
ra_targ	47.813333	Observer's specified target RA [deg]
dec_targ	-17.379833	Observer's specified target Dec [deg]
ra_nom	47.817494610589	Nominal RA [deg]
dec_nom	-17.371078225524	Nominal Dec [deg]
roll_nom	75.431069440031	Nominal Roll [deg]
revision	3	Processing version of data
ontime	6137.5999771357	Sum of GTIs [s]
livetime	6059.8819906061	Livetime [s]
ontime2	6137.5999771357	Sum of GTIs [s]
ontime3	6137.5999771357	Sum of GTIs [s]
ontime5	6137.5999771357	Sum of GTIs [s]
ontime6	6137.5999771357	Sum of GTIs [s]
ontime7	6137.5999771357	Sum of GTIs [s]
ontime8	6137.5999771357	Sum of GTIs [s]
l2events	59110	Number of level 2 events



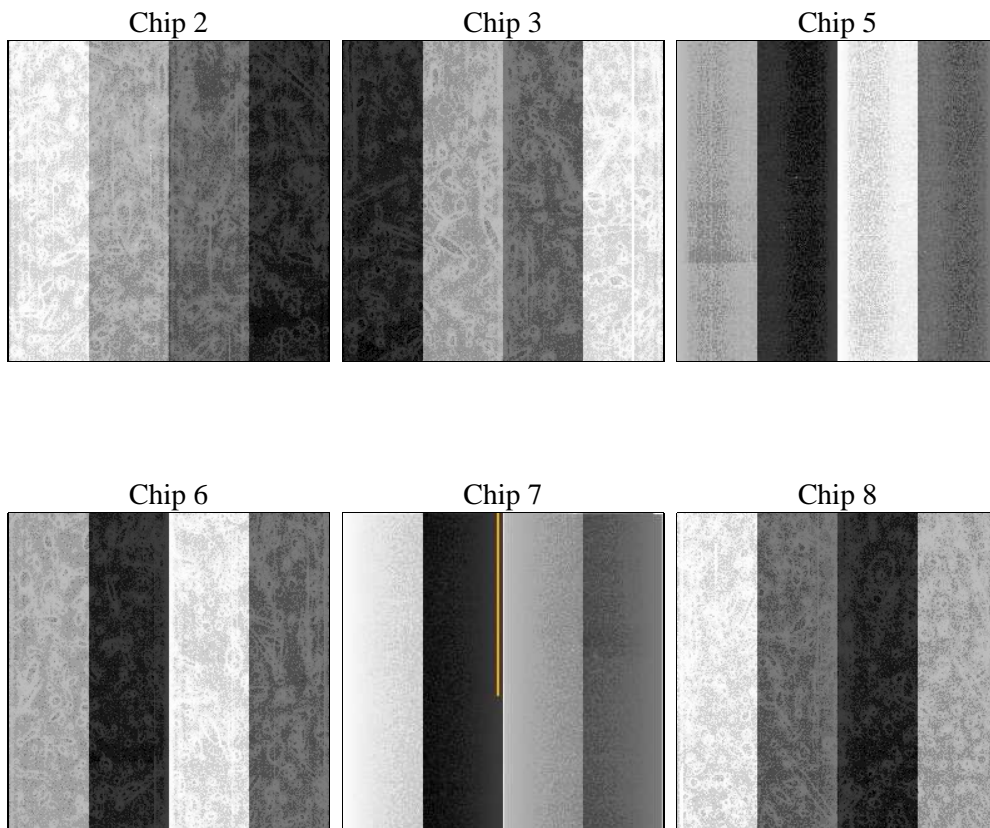
2 OBI

2.1 OBI

2.1.1 Images



2.1.2 Bias



2.1.3 Parameters

obi_num	0	Obi number	sched_exp_time	6000.000000	[s] Scheduled observation exposure time
ascdsver	8.4.5	Processing system revision	ontime	6137.5999771357	Sum of GTIs [s]
caldsver	4.5.2	 	ontime2	6137.5999771357	Sum of GTIs [s]
date	2012-10-14T18:45:36	Date and time of file creation	ontime3	6137.5999771357	Sum of GTIs [s]
revision	3	Processing version of data	ontime5	6137.5999771357	Sum of GTIs [s]
			ontime6	6137.5999771357	Sum of GTIs [s]
			ontime7	6137.5999771357	Sum of GTIs [s]
			ontime8	6137.5999771357	Sum of GTIs [s]
			l1events	343798	Number of level 1 events

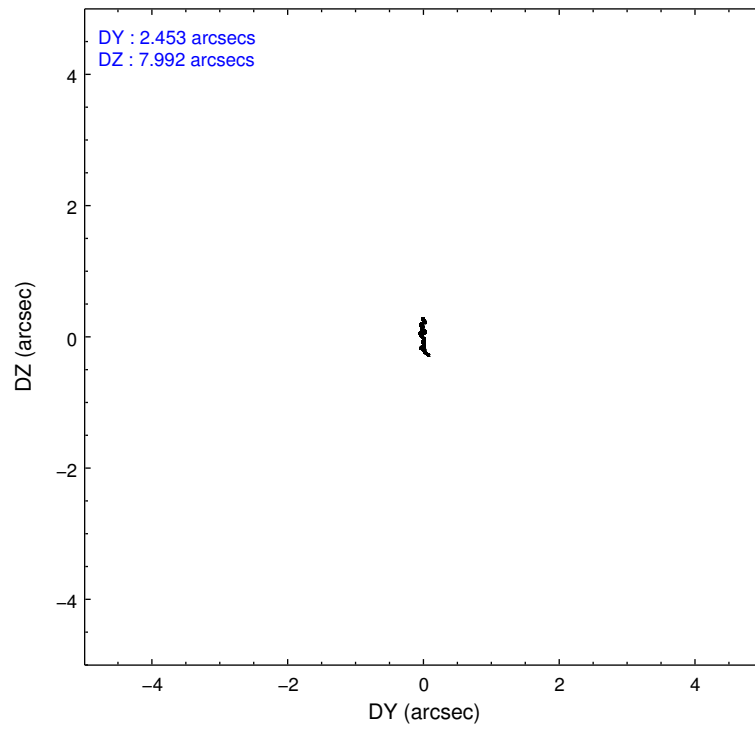
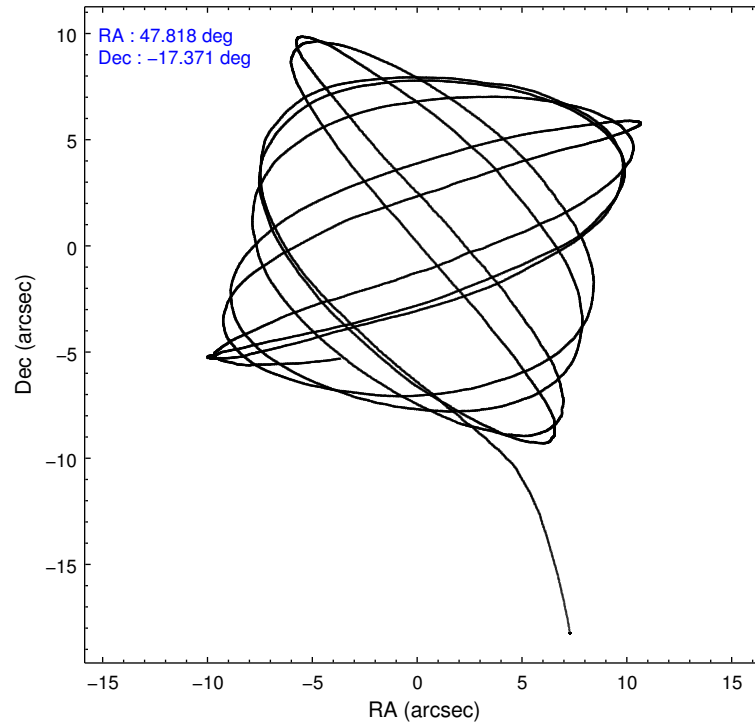
2.1.4 Events

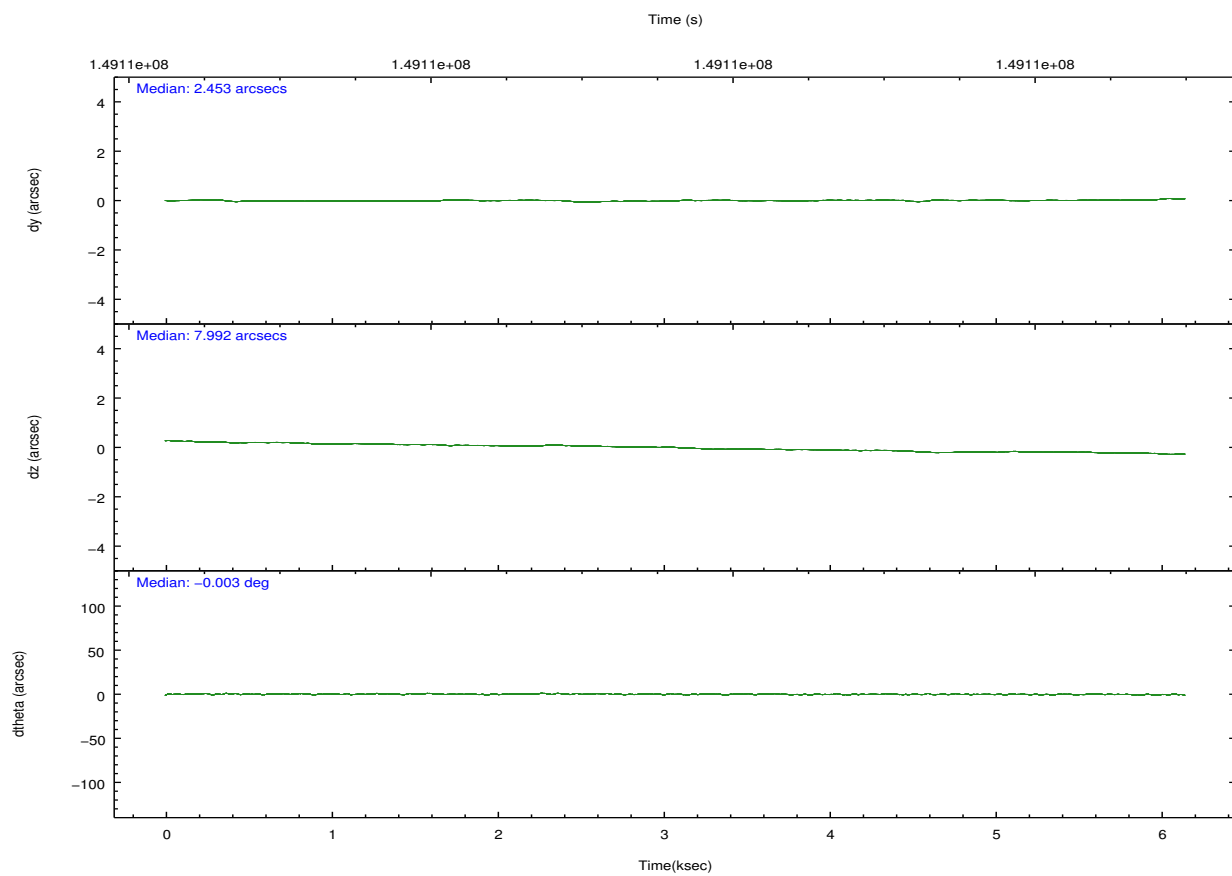
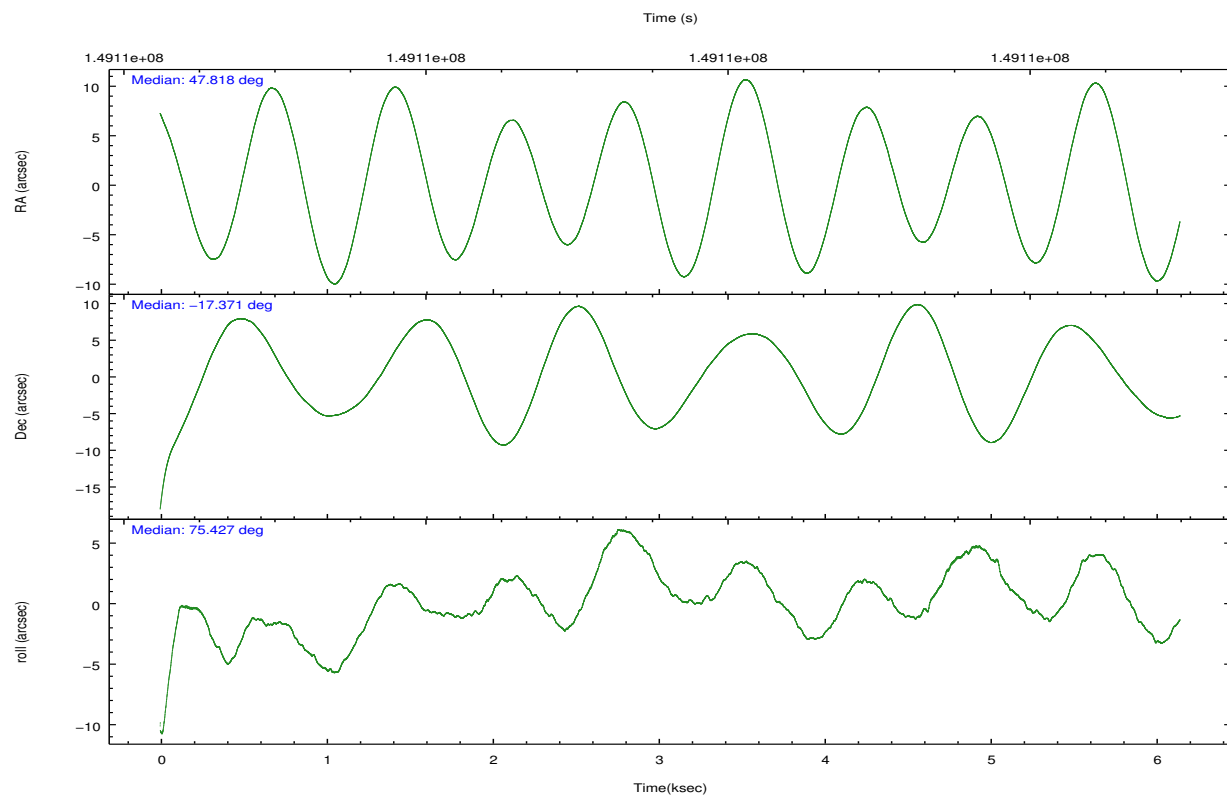
	ccd 2	ccd 3	ccd 5	ccd 6	ccd 7	ccd 8		ccd 2	ccd 3	ccd 5	ccd 6	ccd 7	ccd 8
level 1 events	49182	46054	74110	47995	63651	62806	grade 0 events	2393	2440	5755	2198	2431	4109
rejected events	44979	41737	46778	43539	43089	52710		4%	5%	7%	4%	3%	6%
rejected %	91%	90%	63%	90%	67%	83%	grade 1 events	25	31	95	27	65	46
								0%	0%	0%	0%	0%	0%
							grade 2 events	1042	1020	9742	1175	5031	2730
								2%	2%	13%	2%	7%	4%
							grade 3 events	566	522	1408	598	2415	1480
								1%	1%	1%	1%	3%	2%
							grade 4 events	536	537	1228	602	2384	1388
								1%	1%	1%	1%	3%	2%
							grade 5 events	1907	1970	5632	2167	6083	2940
								3%	4%	7%	4%	9%	4%
							grade 6 events	892	944	16815	1159	13988	3241
								1%	2%	22%	2%	21%	5%
							grade 7 events	41821	38590	33435	40069	31254	46872
								85%	83%	45%	83%	49%	74%

2.2 Compared Parameters

Parameter	Planned	Actual	Parameter	Planned	Actual
Instrument	ACIS	ACIS	Obspar format version number	7	7
Detector	ACIS-235678	ACIS-235678	Obspar file type	PREDICTED	ACTUAL
Grating	NONE	NONE	Obspar update status	NONE	UPDATED
Data mode	FAINT	FAINT	Number of optional ACIS chips dropped	0	0
Observation mode	POINTING	POINTING	On-chip summing requested	N	N
[deg] Pointing RA	47.825523	47.81749461058949	Subarray requested	NONE	NONE
[deg] Pointing Dec	-17.397191	-17.3710782255241	Alternating exposures requested	N	N
[deg] Pointing Roll	75.276852	75.43106944003139	[s] Primary exposure time	0.000000	3.2
[mm] SIM focus pos	-0.684267	-0.6828225247311905			
[mm] SIM defocus	0	0.001444936568705701			
[mm] SIM translation stage pos	-190.132523	-190.1400660498719			
[mm] SIM translation stage offset	0	0.00754346686406393			
[s] Observation start time (MET)	149108682.184000	149106803.61958			
Observation start date	2002-09-22T19:03:38	2002-09-22T18:33:23			
[s] Observation end time (MET)	149114682.184000	149115287.03243			
Observation end date	2002-09-22T20:43:38	2002-09-22T20:54:47			
Read mode	TIMED	TIMED			

2.3 Aspect



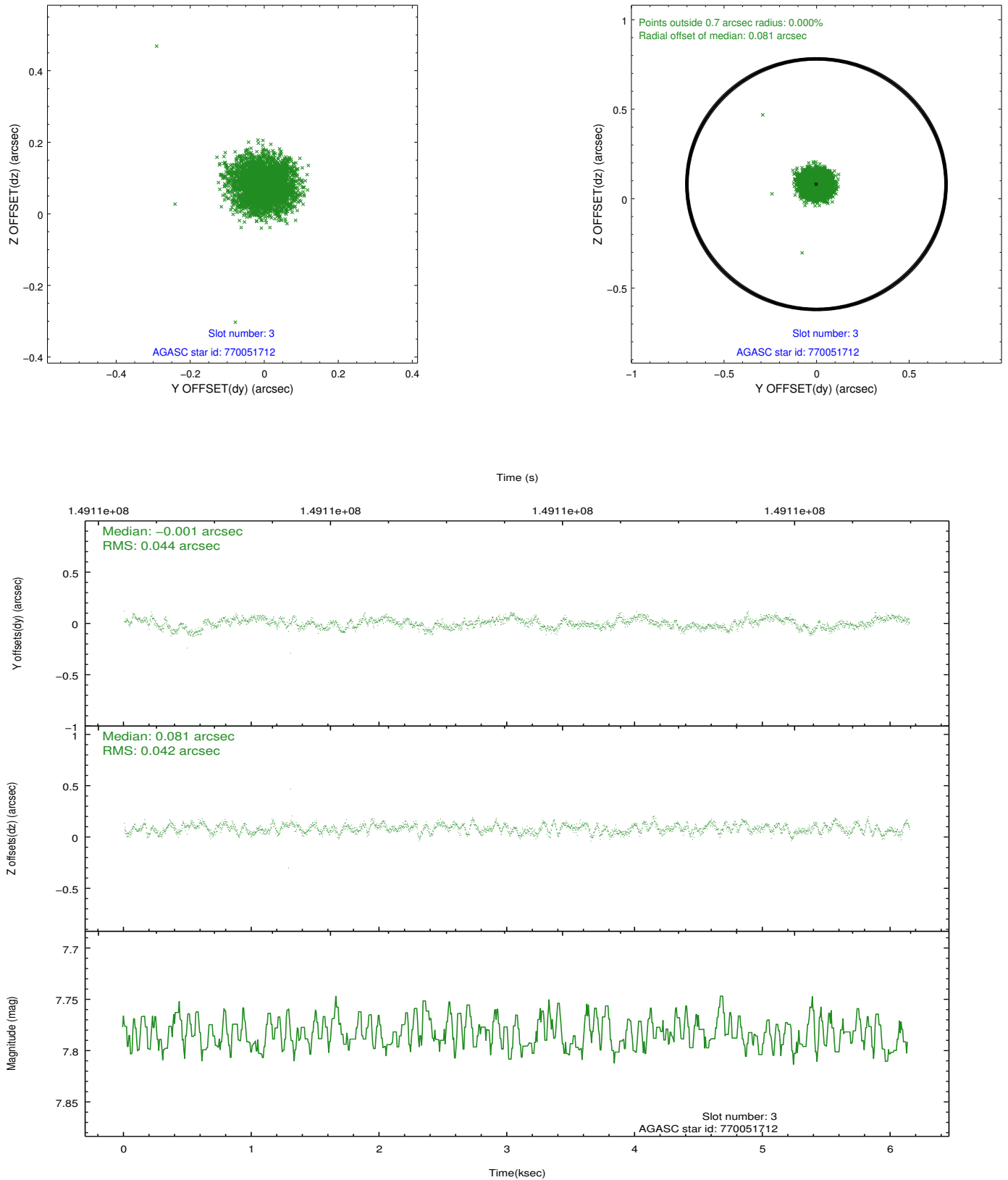


Slot Statistics

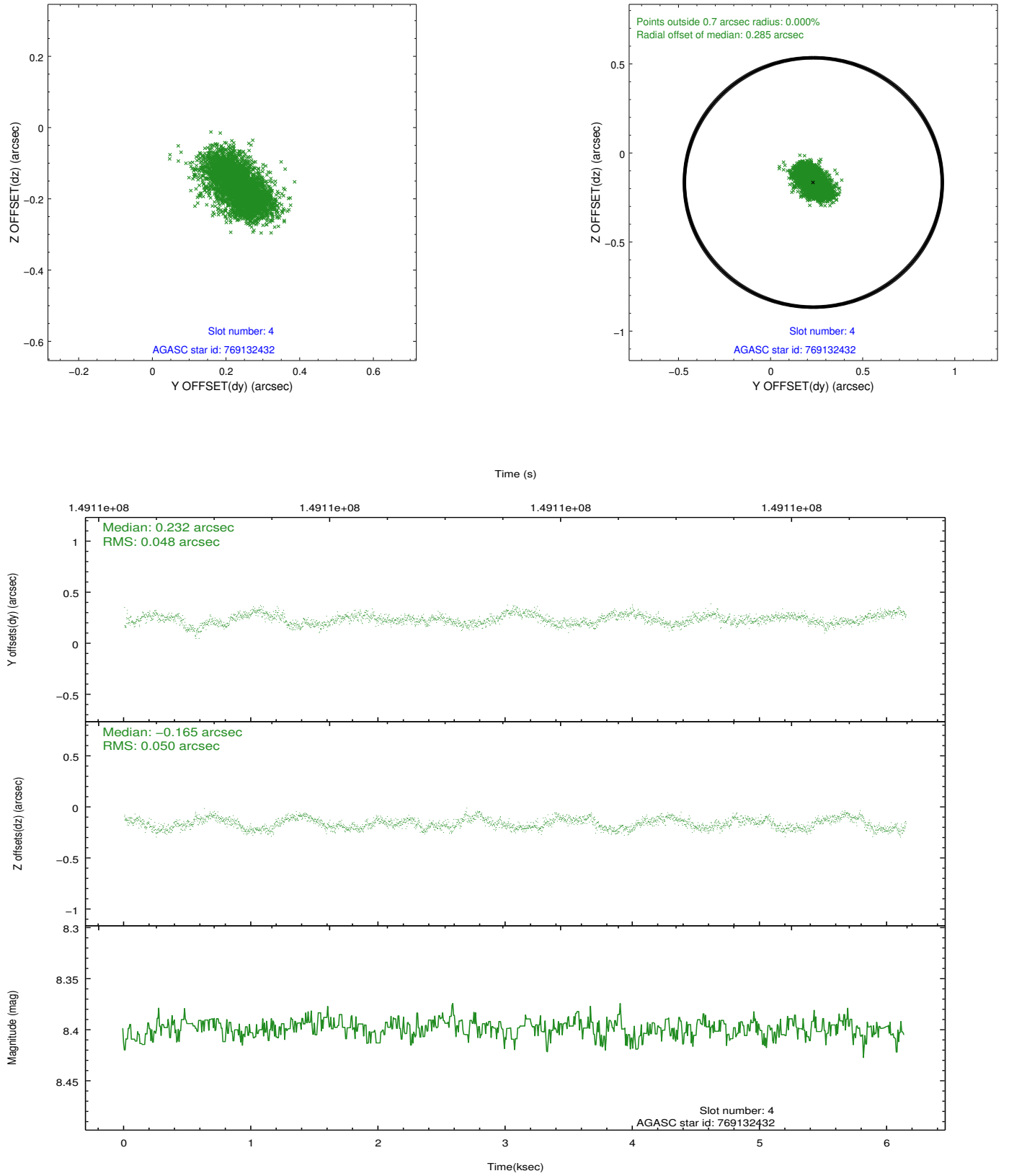
slot	status	id	mag	n_pts	med_dy	med_dz	dr1	dr2	ra	dec	mean_y	mean_z
0	FID	ACIS-S-2	7.11	1499	-0.010	0.003	0.007	0.012	0.000000	0.000000	-755.11	-1729.15
1	FID	ACIS-S-4	7.20	1499	-0.033	0.004	0.006	0.011	0.000000	0.000000	2157.73	178.31
2	FID	ACIS-S-5	7.24	1500	0.012	0.002	0.007	0.012	0.000000	0.000000	-1806.67	173.11
3	GUIDE	770051712	7.78	2997	-0.001	0.081	0.065	0.099	48.288664	-17.630346	-409.77	-1750.37
4	GUIDE	769132432	8.40	2999	0.232	-0.165	0.075	0.115	47.494994	-17.803592	-1703.90	723.08
5	GUIDE	769657384	8.93	2927	-0.129	0.032	0.090	0.139	48.151335	-16.777713	2440.87	-518.95
6	GUIDE	769659272	9.07	2996	-0.107	0.052	0.141	0.197	48.418304	-17.034498	1779.22	-1642.28
7	UNUSED		0.00	0	0.000	0.000	0.000	0.000	0.000000	0.000000	0.00	0.00

2.4 Star Slots

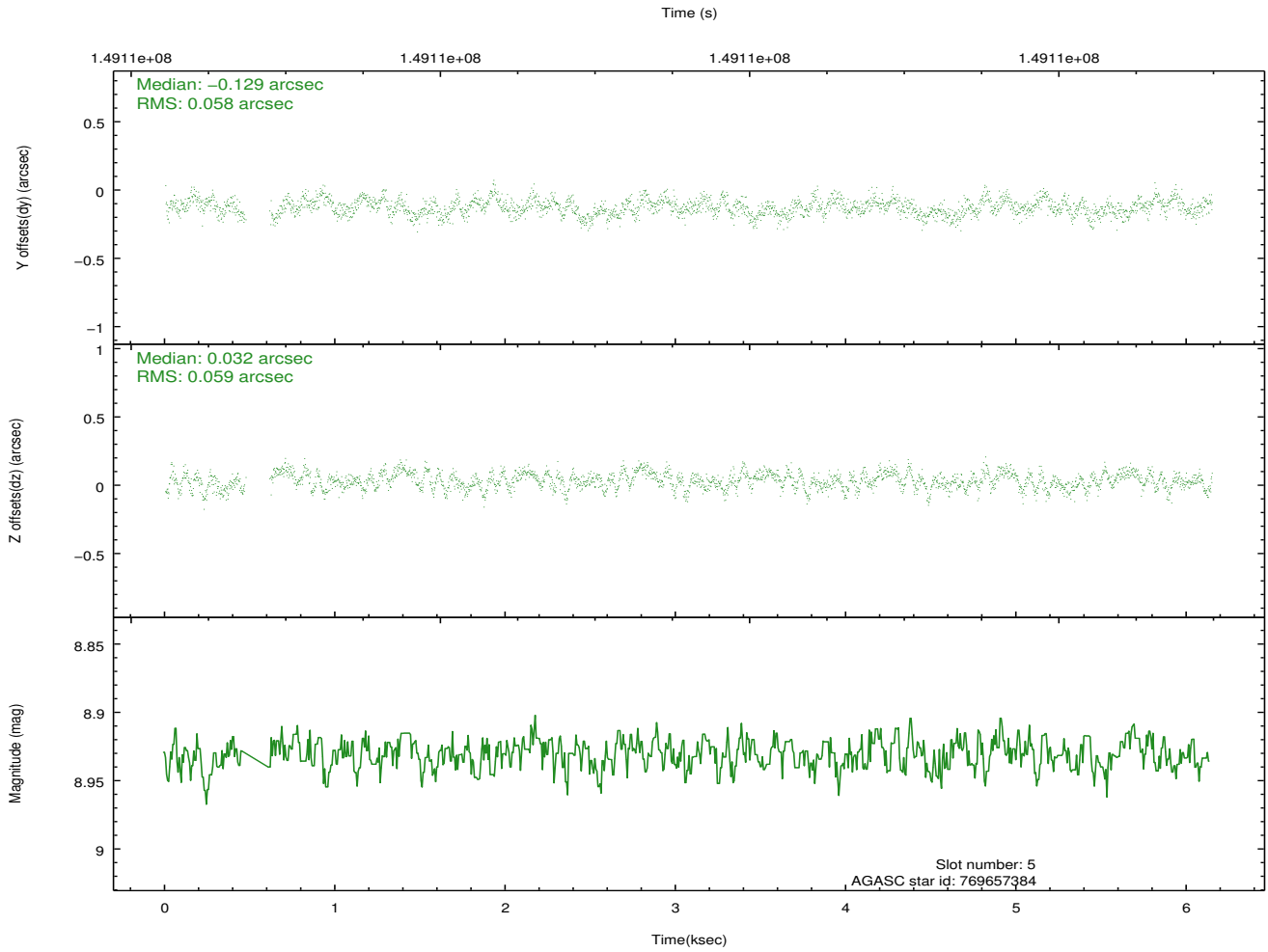
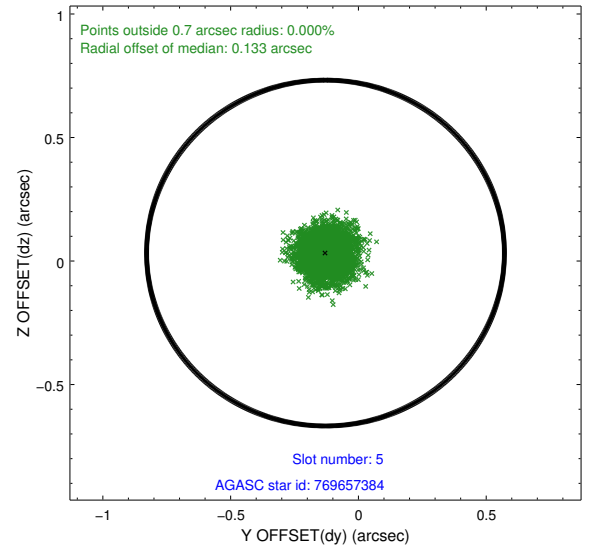
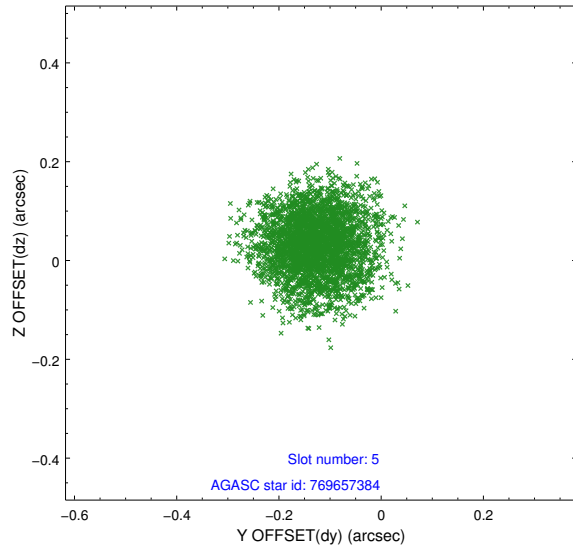
2.4.1 Slot 3



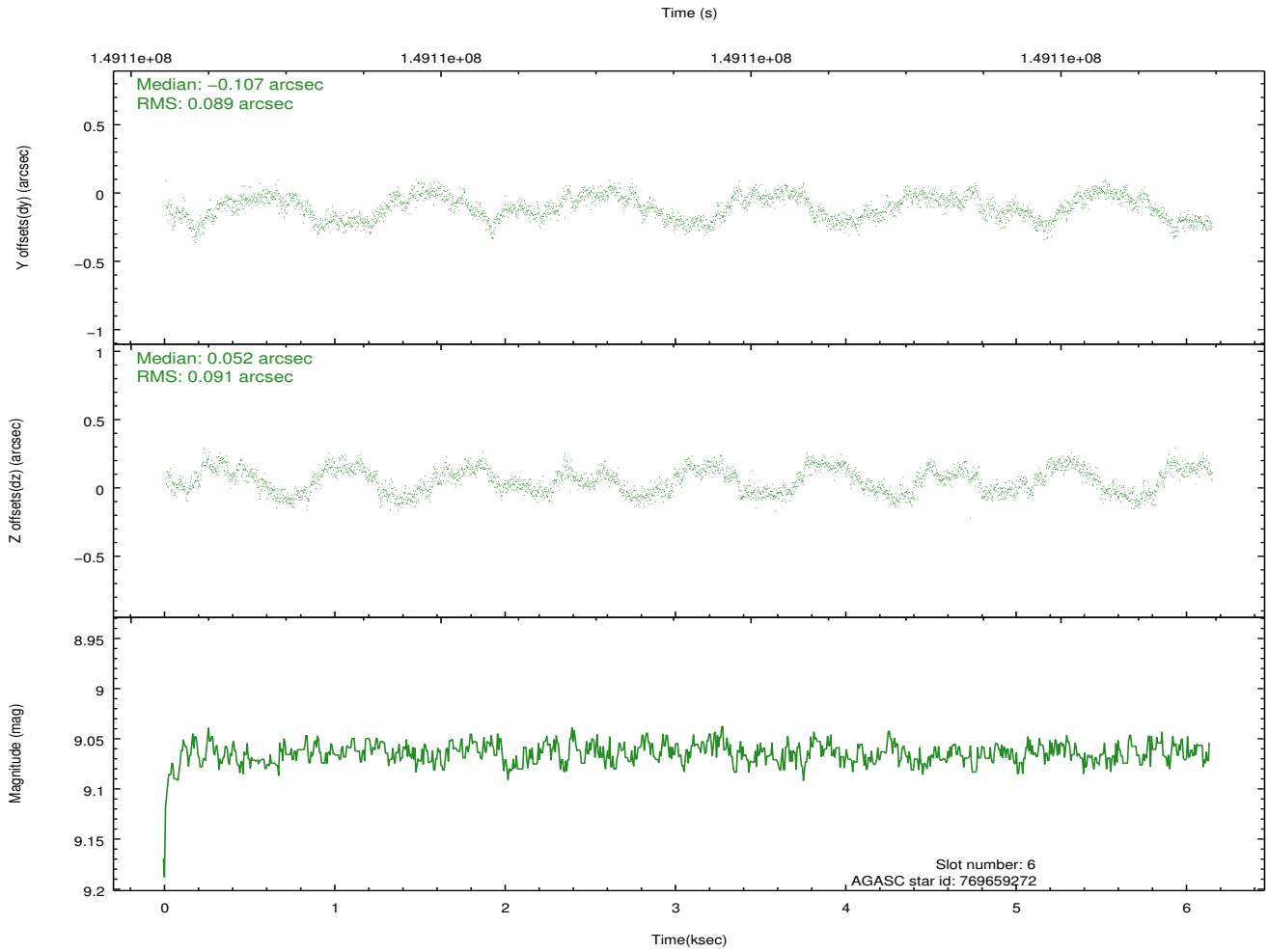
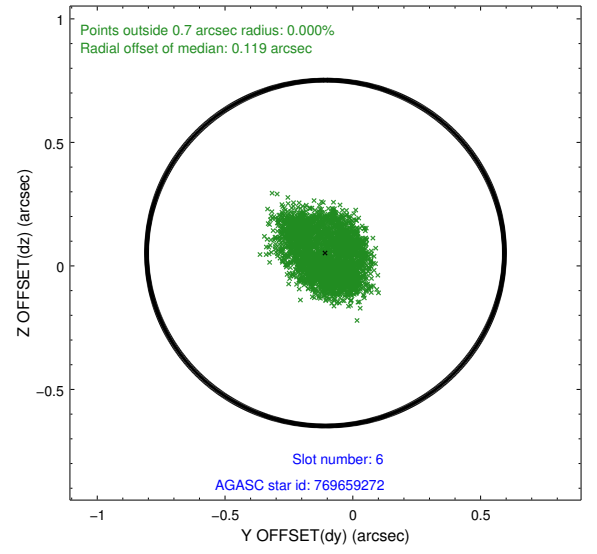
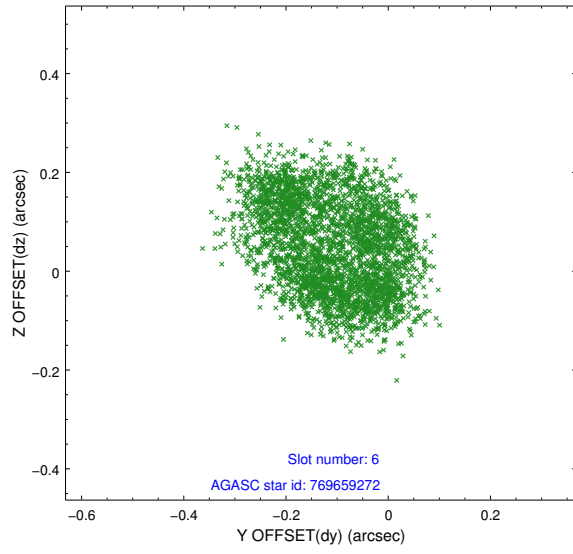
2.4.2 Slot 4



2.4.3 Slot 5

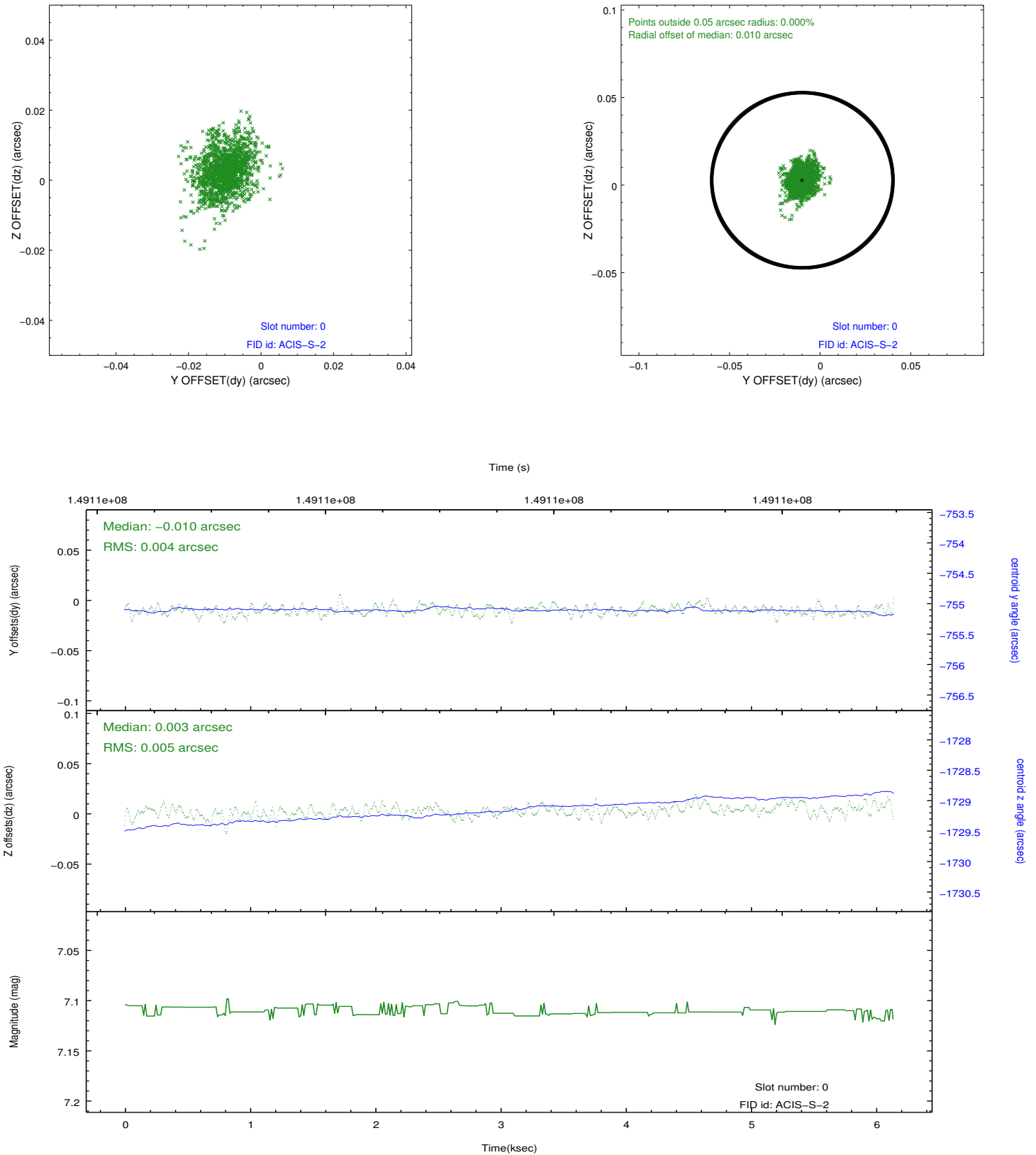


2.4.4 Slot 6

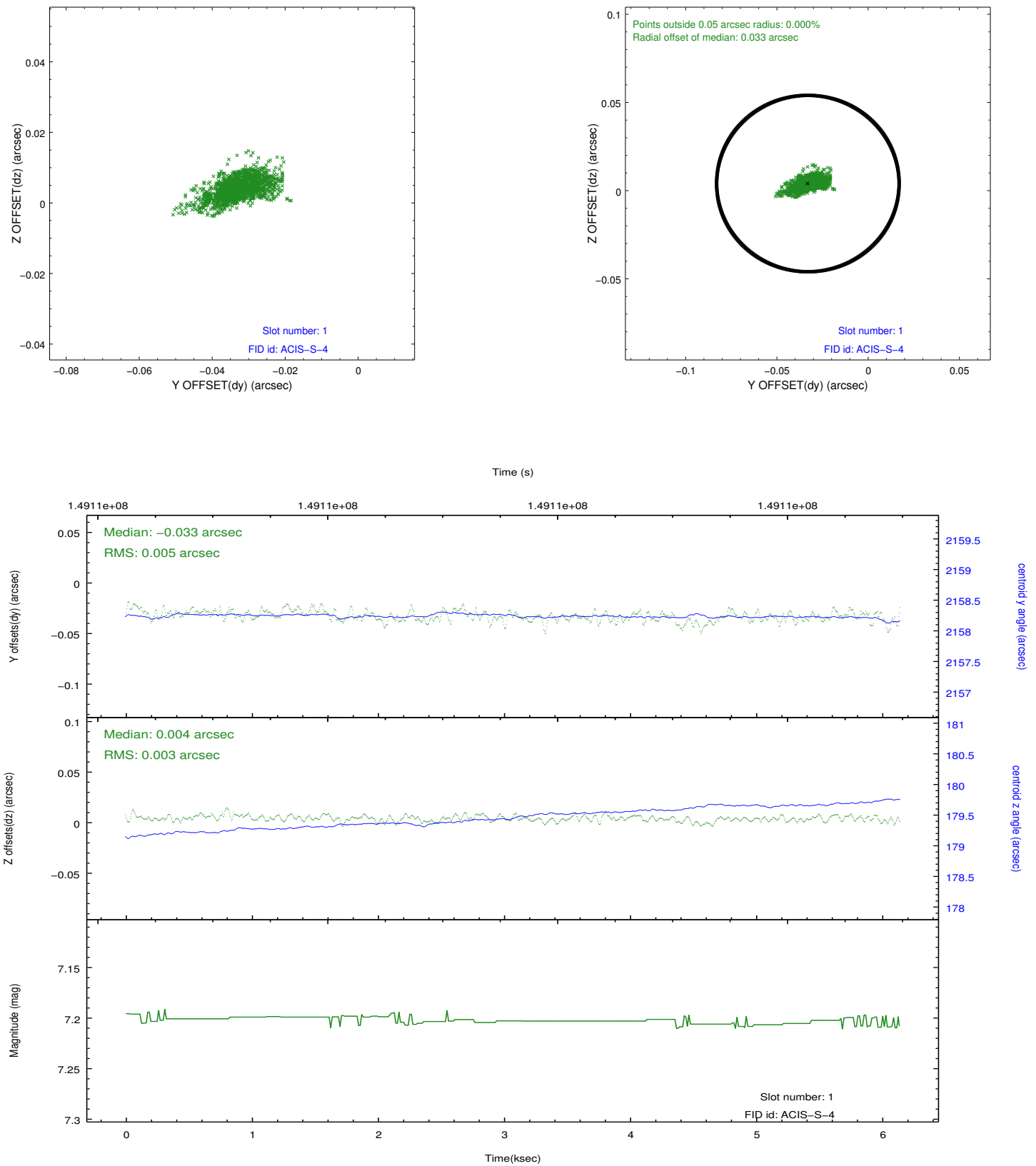


2.5 FID Slots

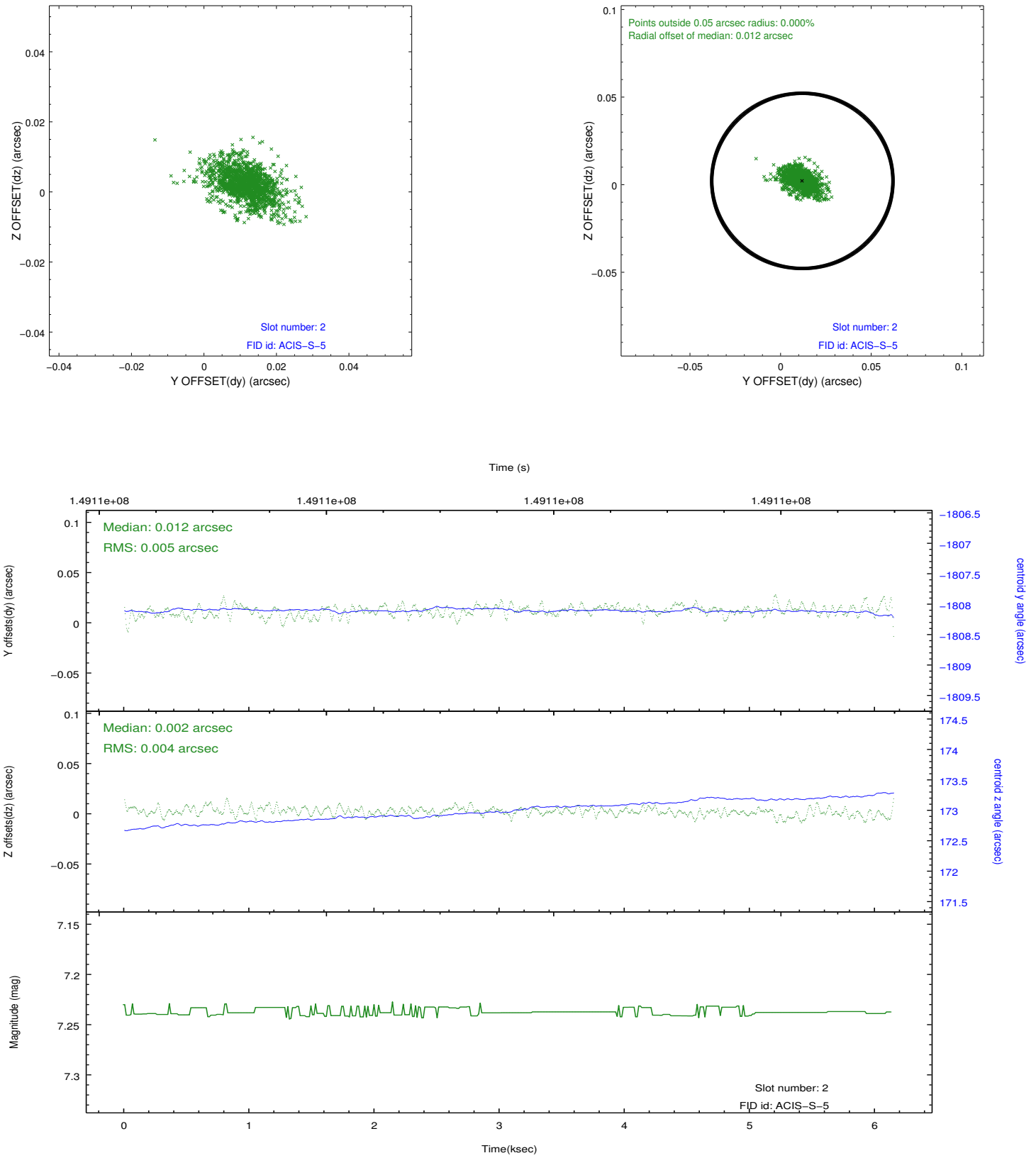
2.5.1 Slot 0



2.5.2 Slot 1



2.5.3 Slot 2



A Summary

A.1 Status

V&V Scientist	Jen Lauer
V&V Date (YYYY-MM-DD)	2012.10.23
V&V Edition	1
V&V Disposition and Status	OK
V&V Charge Time	6.137

A.2 Comments