

V&V Reference Report

L2 ASCDS Version : 7.6.8.1

Observation 3153 - L2 Version 001
Chandra X-Ray Center

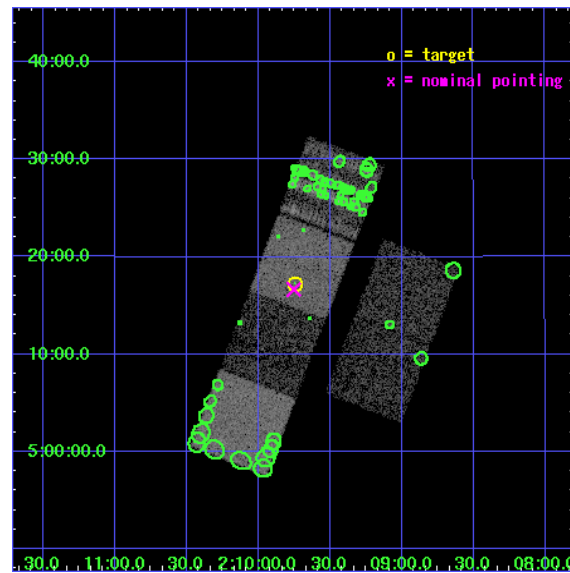
L2 Processing Date : Sep 1 2006

Contents

1	Front	2
2	OBI	3
2.1	OBI	3
2.1.1	Images	3
2.1.2	Bias	3
2.1.3	Parameters	4
2.1.4	Events	4
2.2	Compared Parameters	5
2.3	Aspect	6
2.4	Star Slots	9
2.4.1	Slot 3	9
2.4.2	Slot 4	10
2.4.3	Slot 5	11
2.4.4	Slot 6	12
2.4.5	Slot 7	13
2.5	FID Slots	14
2.5.1	Slot 0	14
2.5.2	Slot 1	15
2.5.3	Slot 2	16
3	Point Sources	17
A	Summary	18
A.1	Status	18
A.2	Comments	18

1 Front

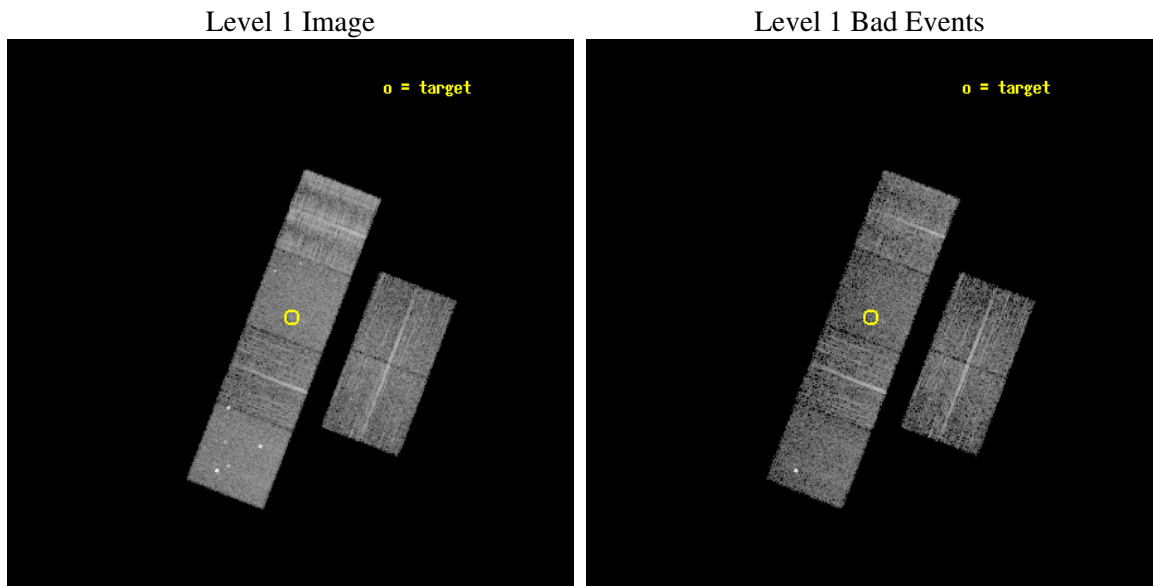
seq_num	700592
obs_id	3153
title	A CHANDRA SURVEY OF THE MOST LUMINOUS QUASARS AT $Z > 4$
observer	Professor Gordon Garmire
object	PSS0209+0517
dtcycle	0
cycle	P
ra_targ	32.43625
dec_targ	5.287222
ra_nom	32.438078507524
dec_nom	5.277609270795
roll_nom	291.01187094204
revision	2
ontime	5849.6000054479
livetime	5775.5288479726
ontime2	5849.6000054479
ontime3	5849.6000054479
ontime5	5849.6000054479
ontime6	5849.6000054479
ontime7	5849.6000054479
ontime8	5849.6000054479
l2events	70268



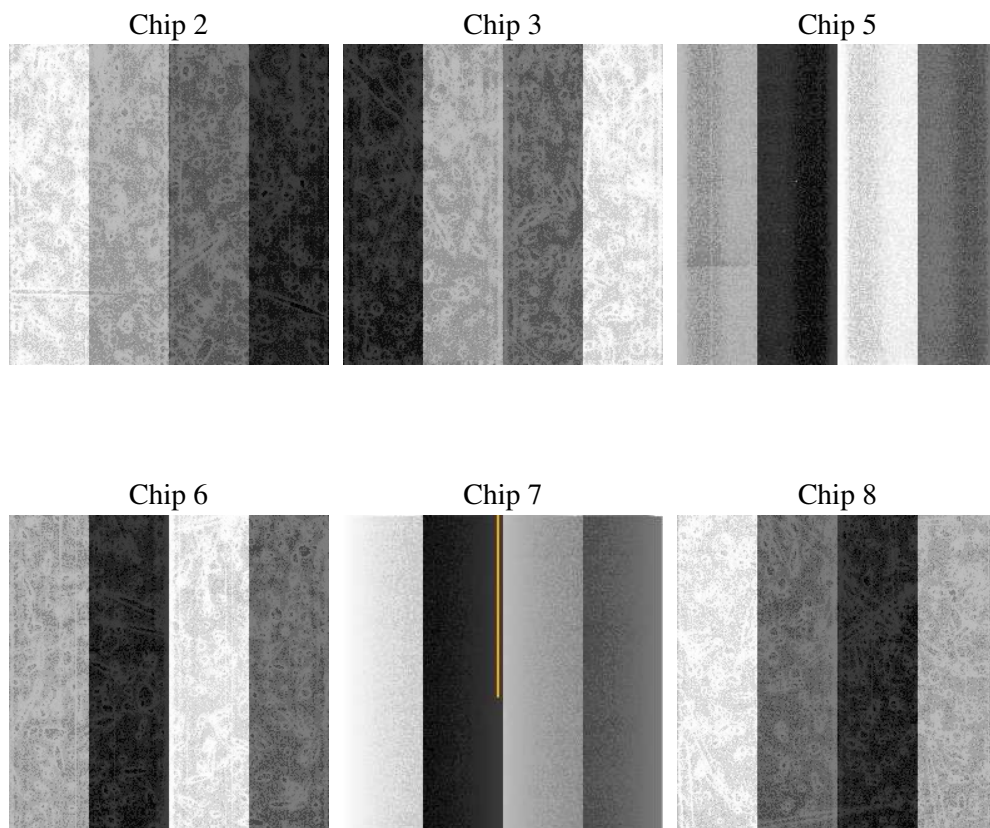
2 OBI

2.1 OBI

2.1.1 Images



2.1.2 Bias



2.1.3 Parameters

obi_num	0
ascdsver	7.6.8.1
caldbver	3.2.3
date	2006-09-01T12:59:29
revision	2

sched_exp_time	5700.000000
ontime	6294.0213333666
ontime2	6294.0213333666
ontime3	6294.0213333666
ontime5	6294.0213532746
ontime6	6294.0213333666
ontime7	6294.0213333666
ontime8	6294.0213333666
l1events	321074

2.1.4 Events

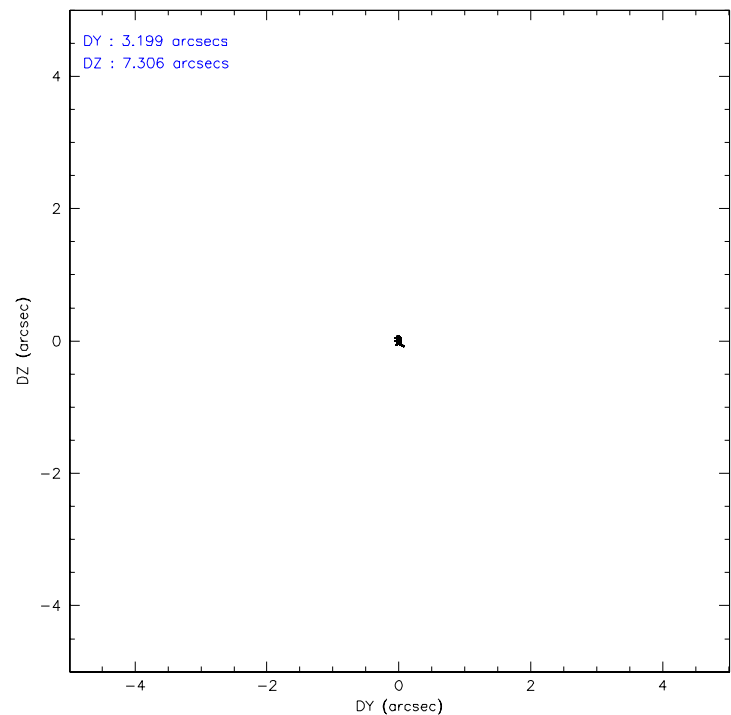
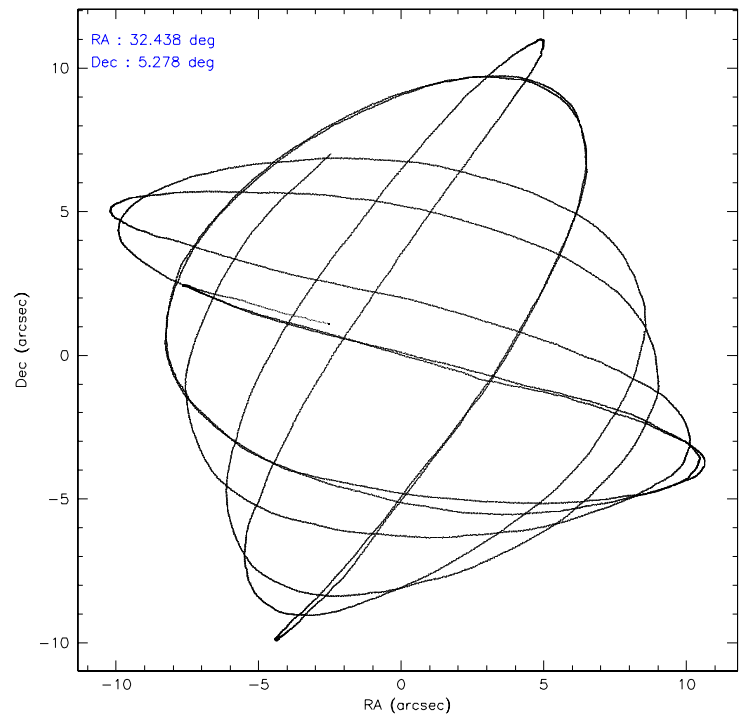
	ccd 2	ccd 3	ccd 5	ccd 6	ccd 7	ccd 8
level 1 events	44988	41822	61623	44456	53100	75085
rejected events	39149	36373	35434	38702	33157	45656
rejected %	87%	86%	57%	87%	62%	60%

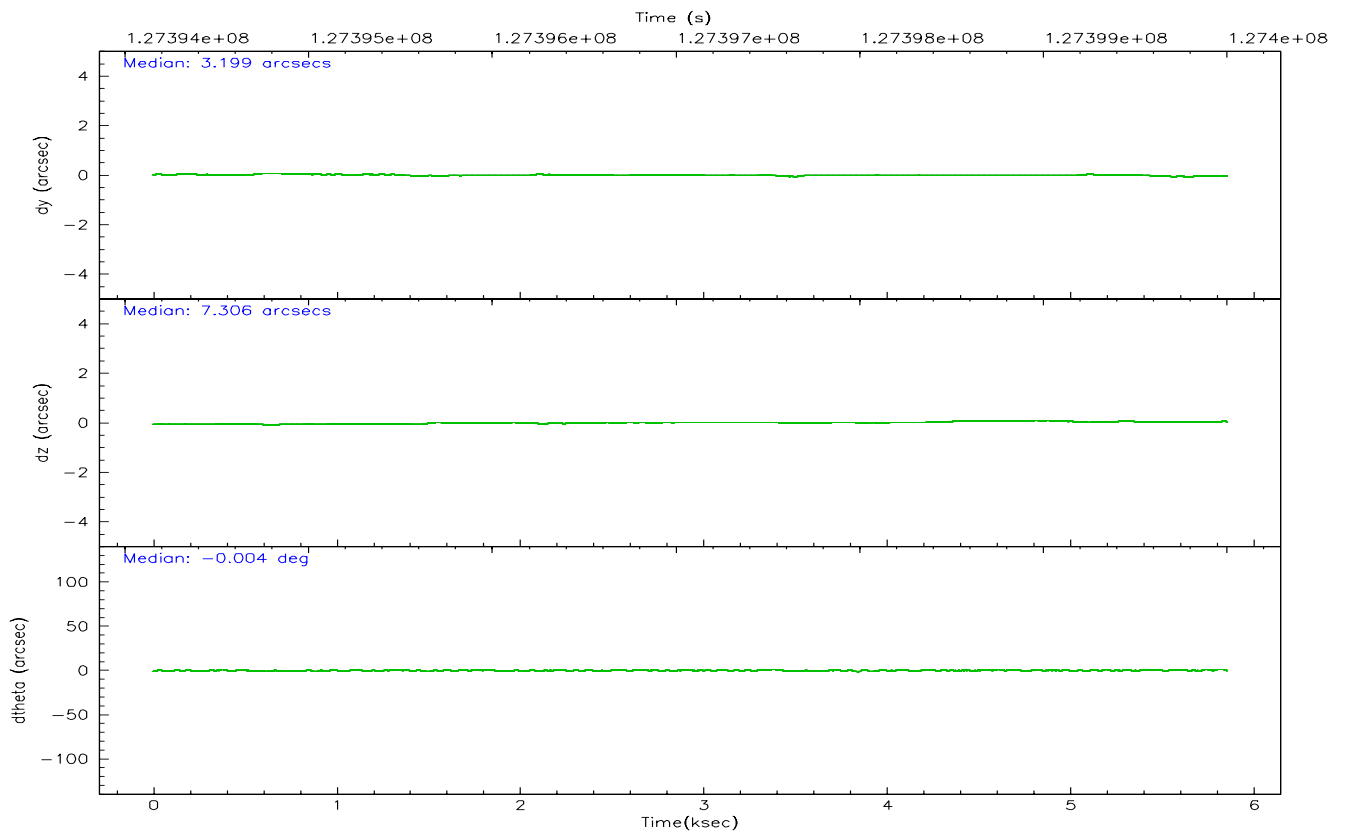
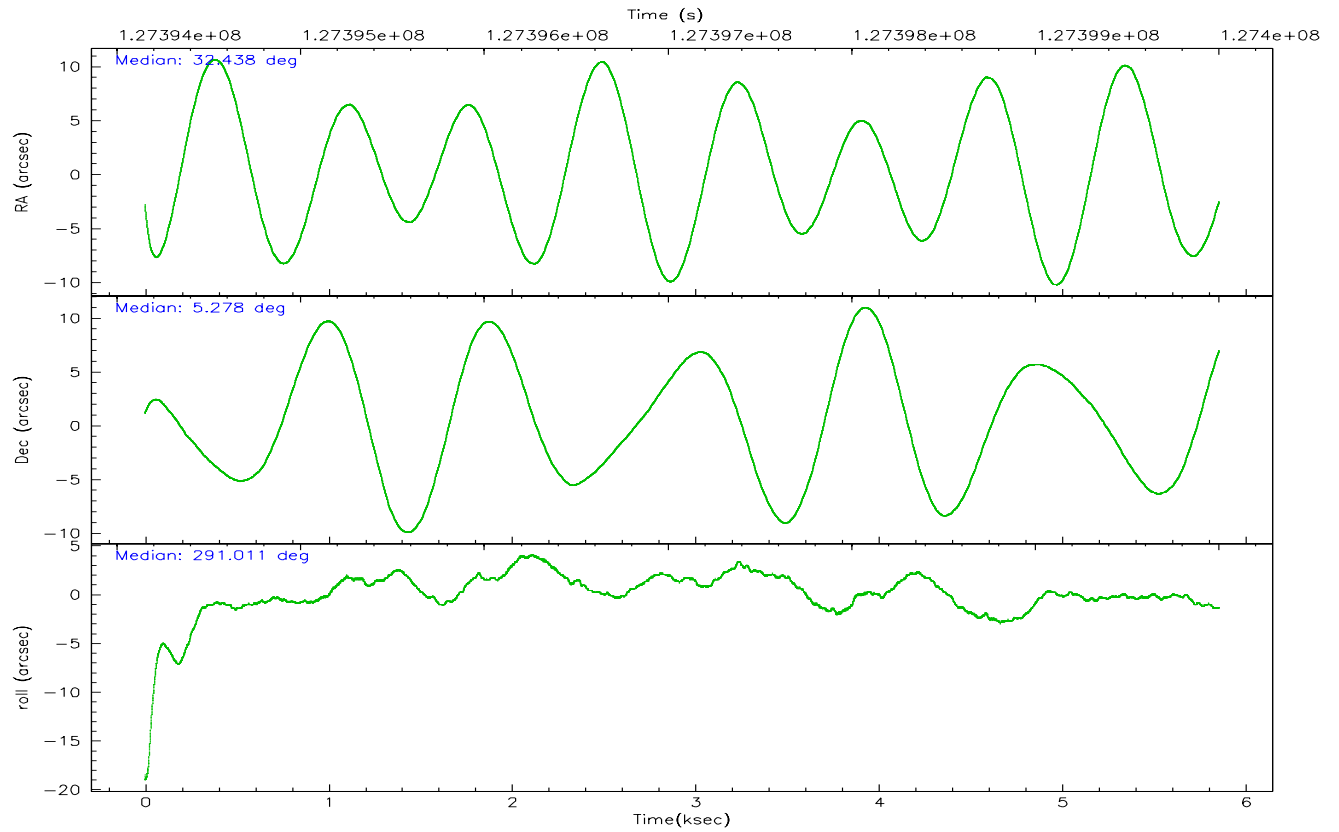
	ccd 2	ccd 3	ccd 5	ccd 6	ccd 7	ccd 8
grade 0 events	2725	2418	3394	2546	1488	9368
	6%	5%	5%	5%	2%	12%
grade 1 events	26	13	83	26	33	79
	0%	0%	0%	0%	0%	0%
grade 2 events	1496	1338	8549	1460	5440	5036
	3%	3%	13%	3%	10%	6%
grade 3 events	423	425	1005	457	1177	4921
	0%	1%	1%	1%	2%	6%
grade 4 events	502	448	846	455	1149	4471
	1%	1%	1%	1%	2%	5%
grade 5 events	1359	1496	3603	1648	3454	2347
	3%	3%	5%	3%	6%	3%
grade 6 events	1140	1198	14419	1217	12082	7516
	2%	2%	23%	2%	22%	10%
grade 7 events	37317	34486	29724	36647	28277	41347
	82%	82%	48%	82%	53%	55%

2.2 Compared Parameters

Parameter	Planned	Actual	Parameter	Planned	Actual
Instrument	ACIS	ACIS	Obspar format version number	6	6
Detector	ACIS-235678	ACIS-235678	Obspar file type	PREDICTED	ACTUAL
Grating	NONE	NONE	Obspar update status	NONE	UPDATED
Data mode	FAINT	FAINT	On-chip summing requested	N	N
Observation mode	POINTING	POINTING	Subarray requested	NONE	NONE
Pointing RA	32.416602	32.43807850752448	Alternating exposures requested	N	N
Pointing Dec	5.294568	5.277609270795041	Primary exposure time	0.000000	3.2
Pointing Roll	290.857249	291.0118709420407			
SIM focus pos (mm)	-0.684267	-0.6828225247311905			
SIM defocus (mm)	0	0.001444936568705701			
SIM translation stage pos (mm)	-190.132523	-190.1400660498719			
SIM translation stage offset (mm)	0	0.00754346686406393			
Observation start time	127394303.184000	127393028.99608			
Observation start date	2002-01-14T11:17:19	2002-01-14T10:57:08			
Observation end time	127400003.184000	127400735.97139			
Observation end date	2002-01-14T12:52:19	2002-01-14T13:05:35			
Read mode	TIMED	TIMED			

2.3 Aspect



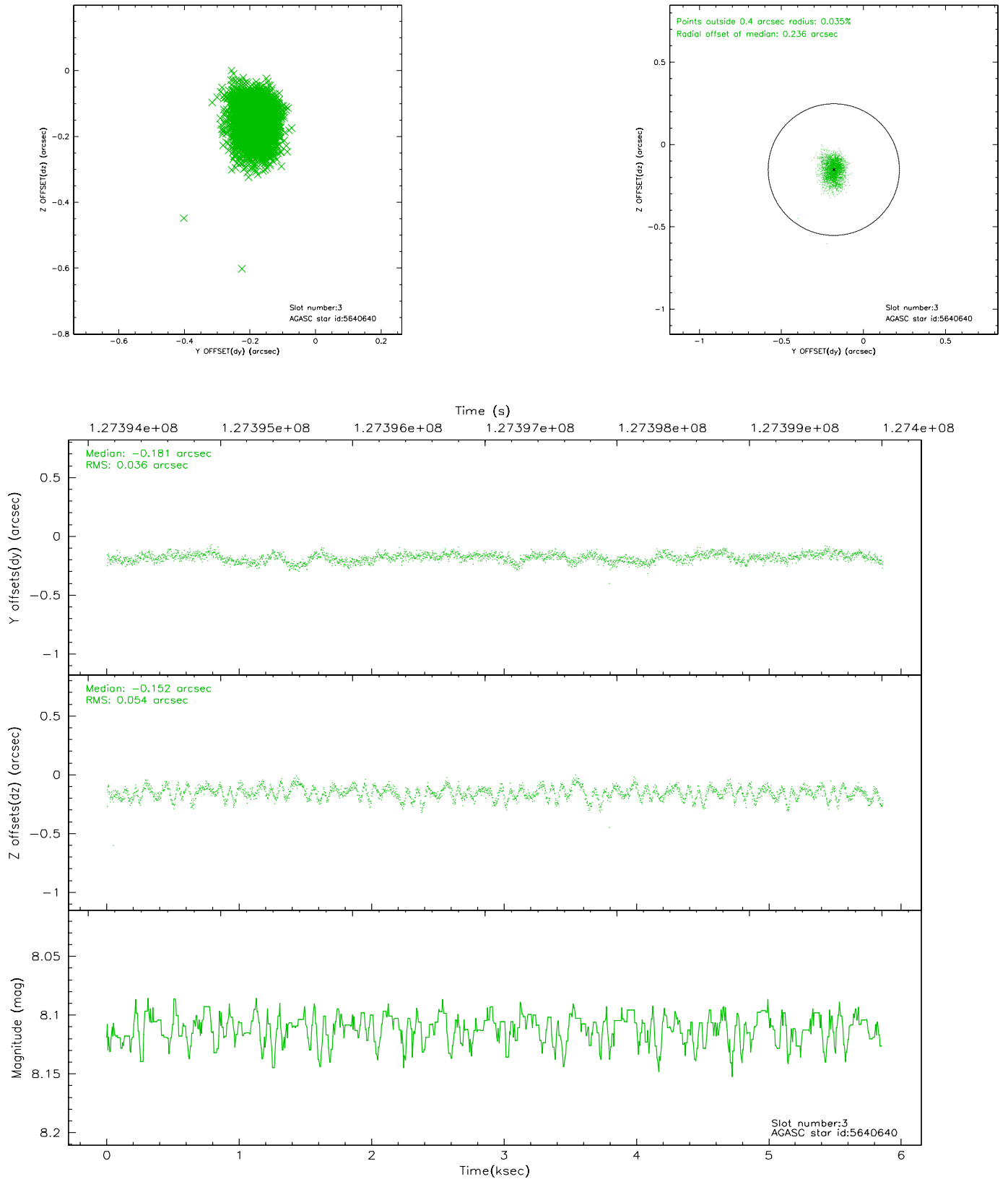


Slot Statistics

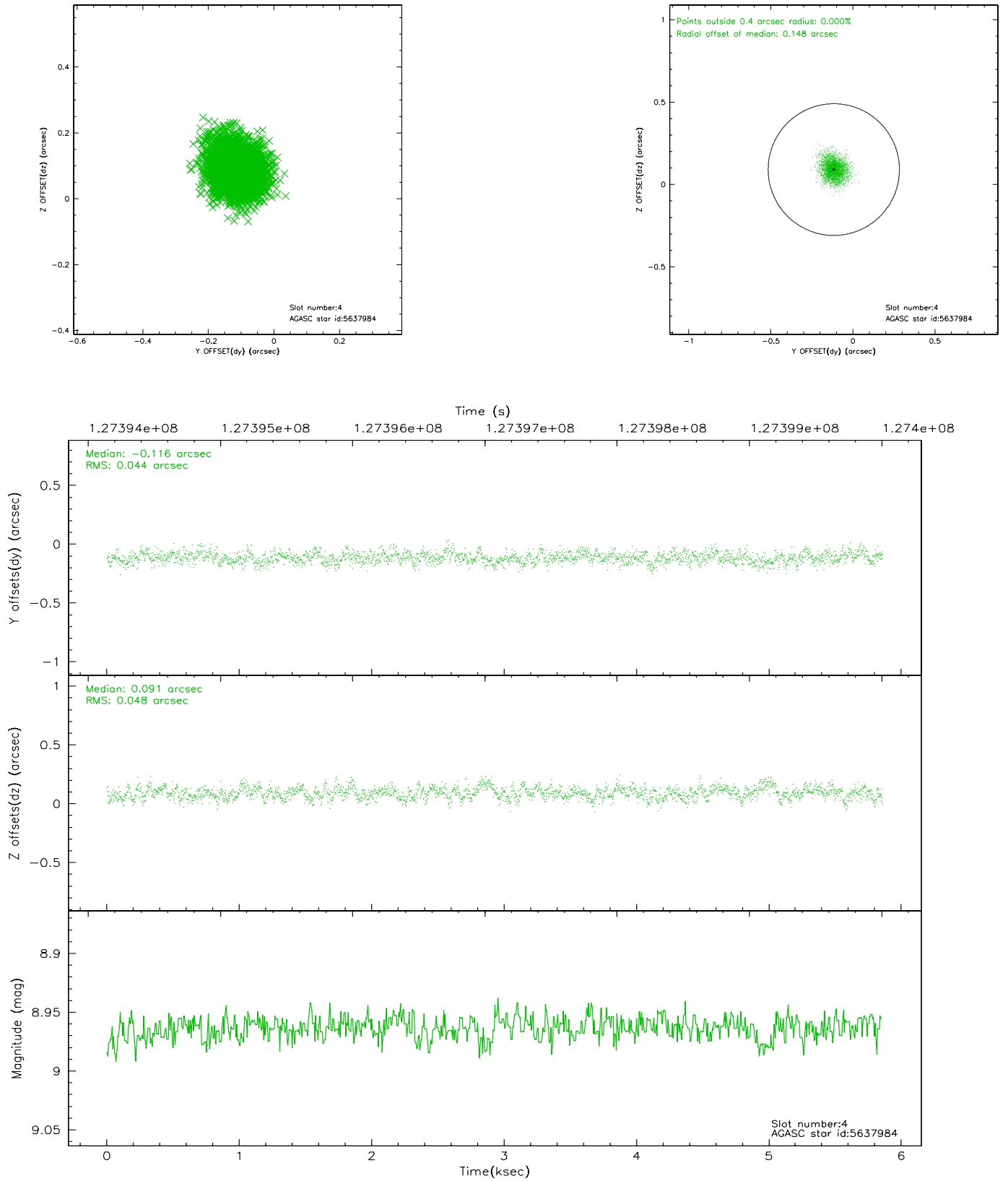
slot	status	id	mag	n_pts	med_dy	med_dz	dr1	dr2	ra	dec	mean_y	mean_z
0	FID	ACIS-S-2	7.11	1429	0.001	0.026	0.006	0.011	0.000000	0.000000	-755.85	-1728.45
1	FID	ACIS-S-4	7.20	1429	-0.065	-0.008	0.005	0.008	0.000000	0.000000	2156.90	178.94
2	FID	ACIS-S-5	7.24	1429	0.032	-0.010	0.006	0.011	0.000000	0.000000	-1807.35	173.77
3	GUIDE	5640640	8.11	2857	-0.181	-0.152	0.067	0.110	31.912872	5.626312	-1759.34	-1261.39
4	GUIDE	5637984	8.96	2858	-0.116	0.091	0.070	0.112	32.447738	5.931084	-2102.20	919.60
5	GUIDE	5773424	9.18	2857	0.121	0.051	0.086	0.135	32.733185	5.084933	1108.60	792.39
6	GUIDE	5637968	9.33	2853	0.018	-0.088	0.089	0.139	32.248313	5.104036	426.60	-808.13
7	GUIDE	5382072	9.57	2854	0.158	0.103	0.110	0.179	32.893349	4.763661	2394.98	917.73

2.4 Star Slots

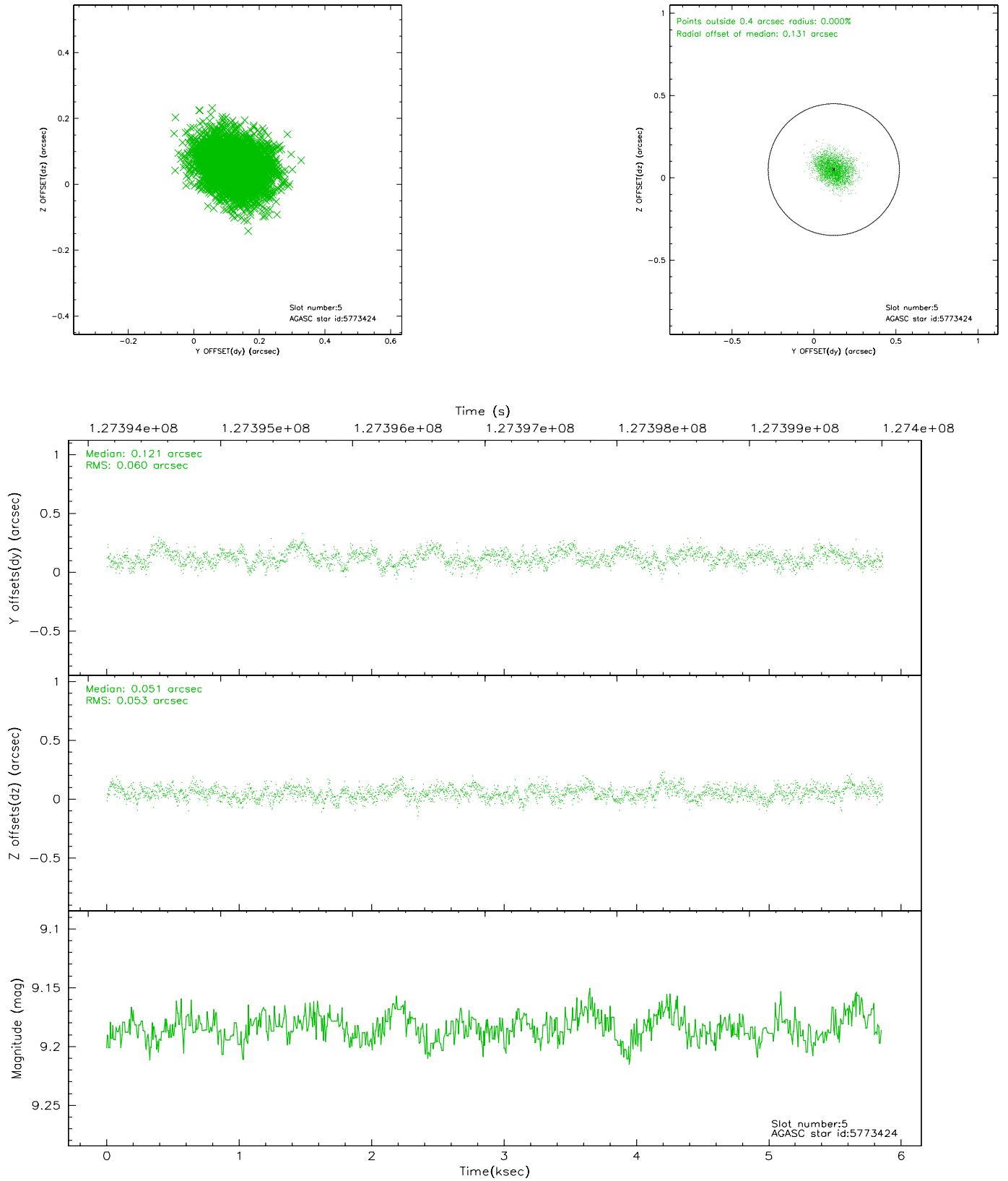
2.4.1 Slot 3



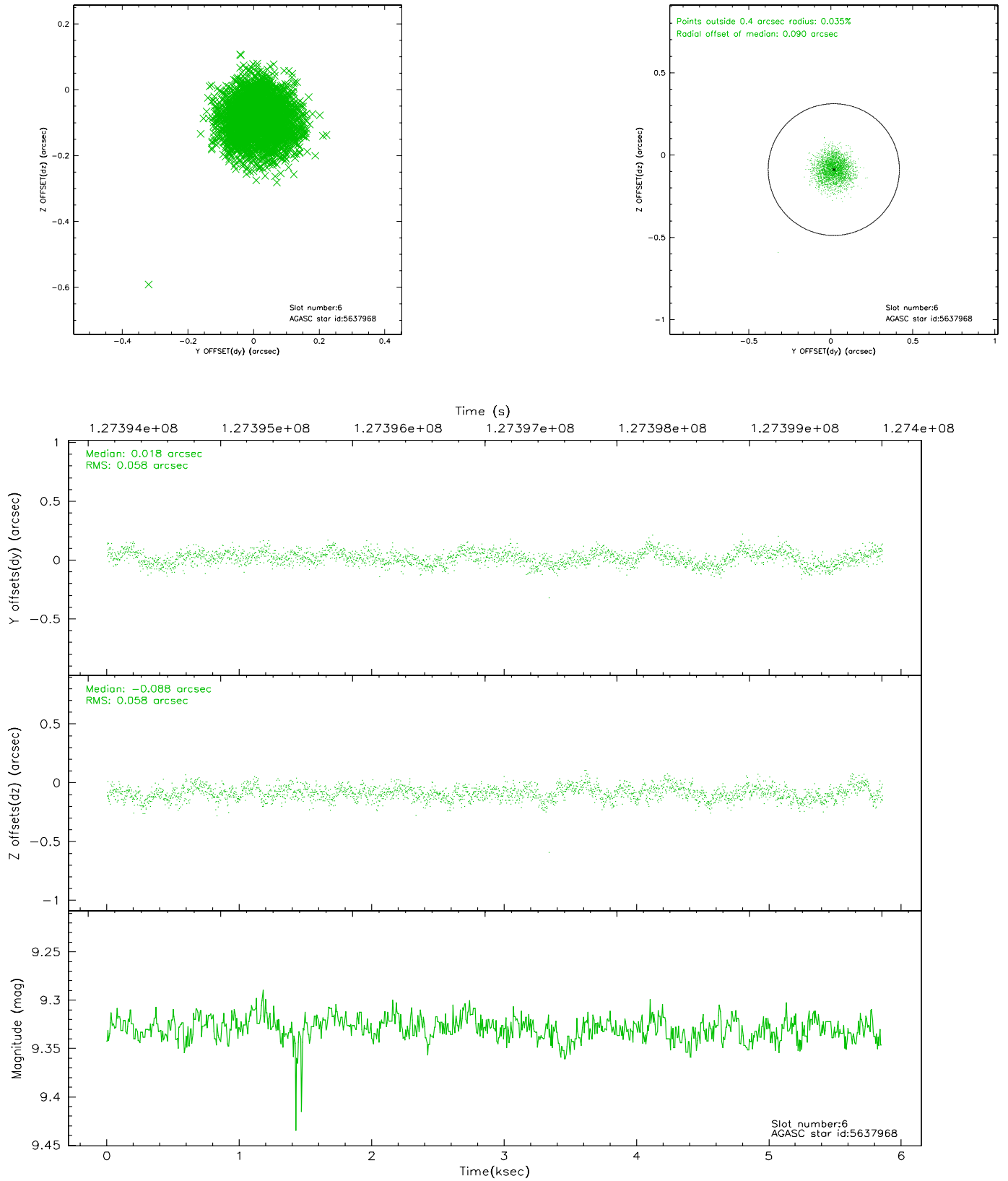
2.4.2 Slot 4



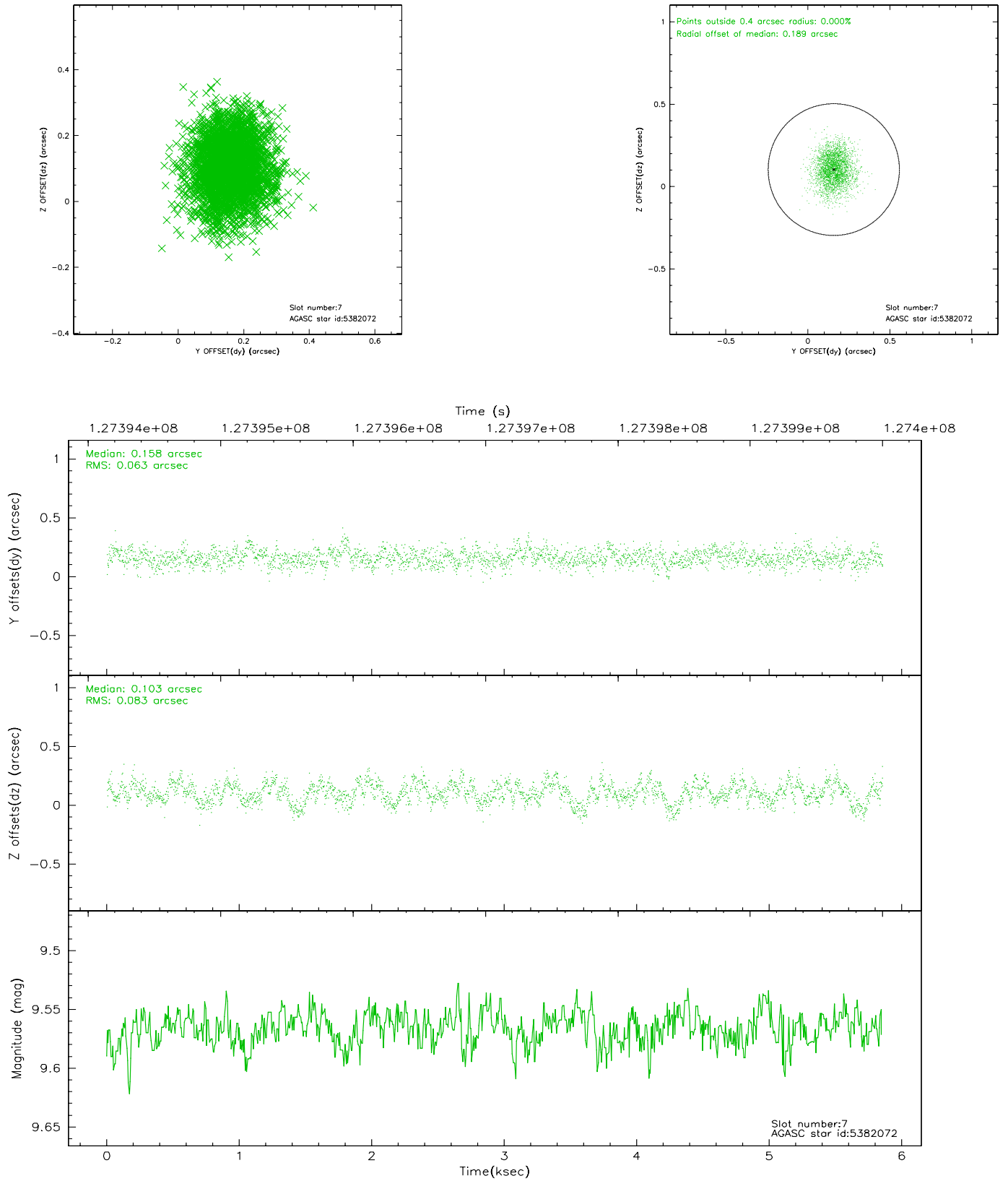
2.4.3 Slot 5



2.4.4 Slot 6

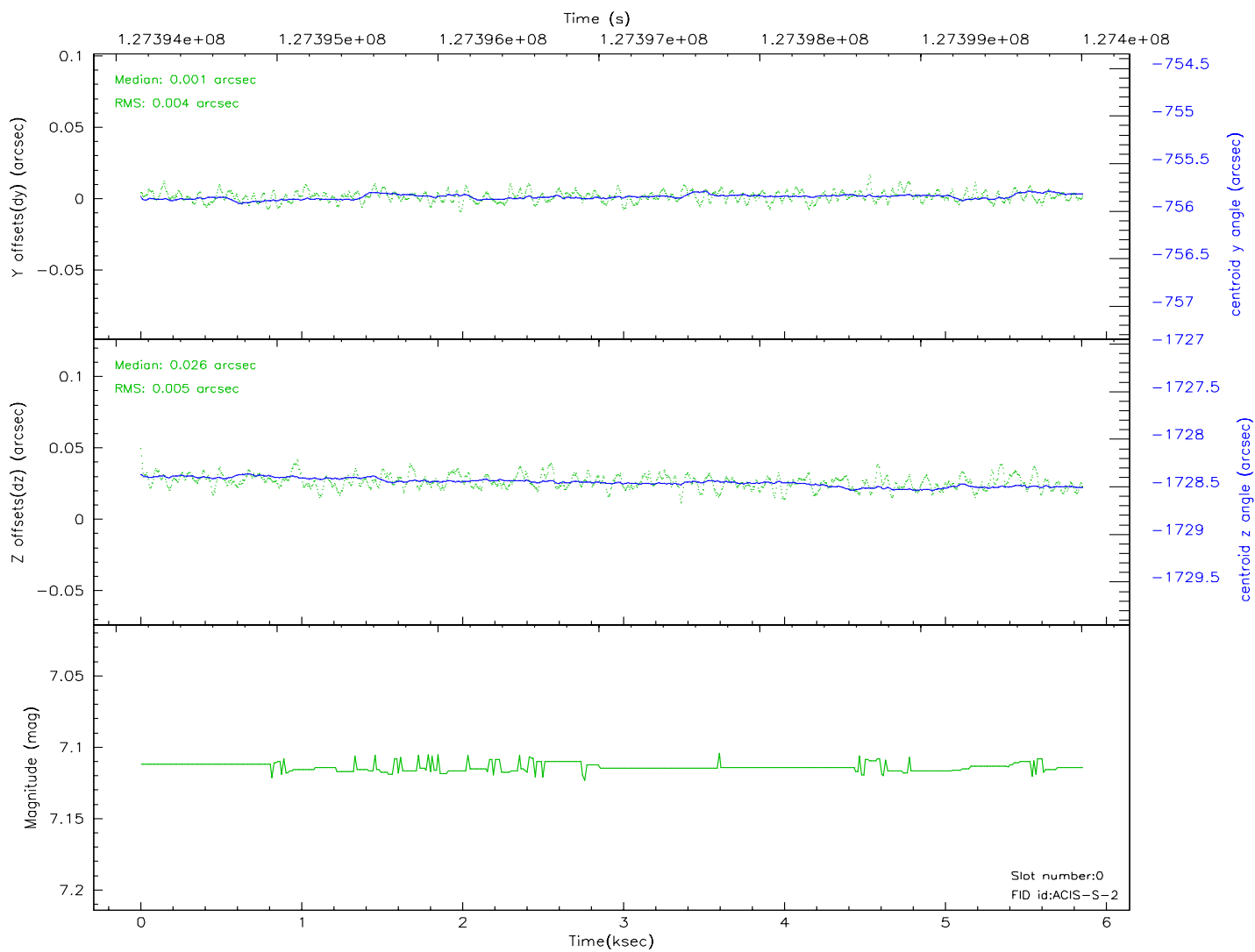
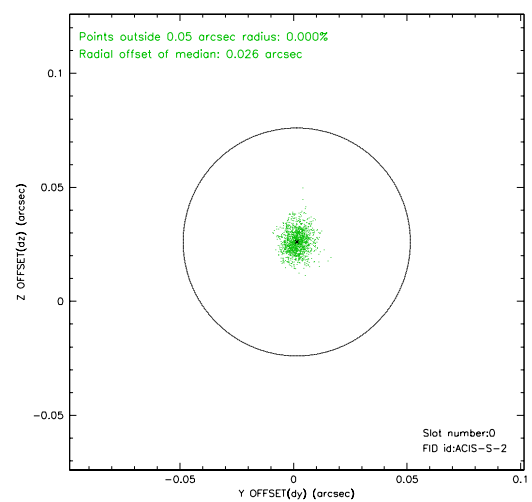
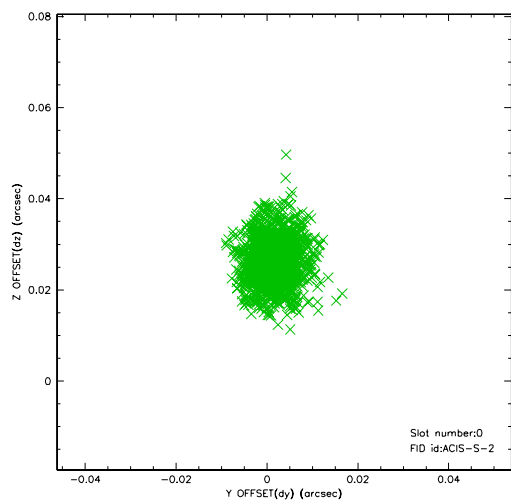


2.4.5 Slot 7

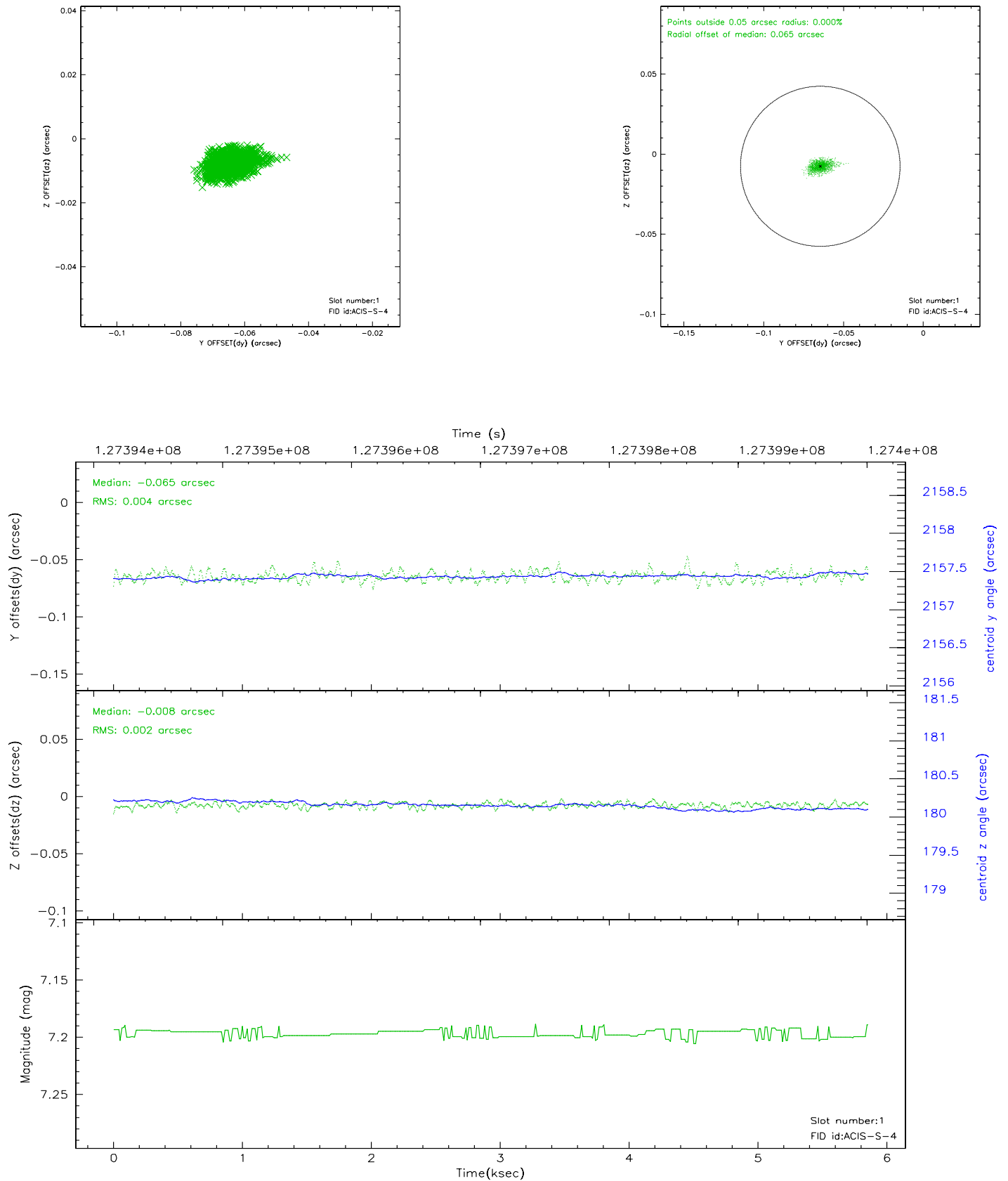


2.5 FID Slots

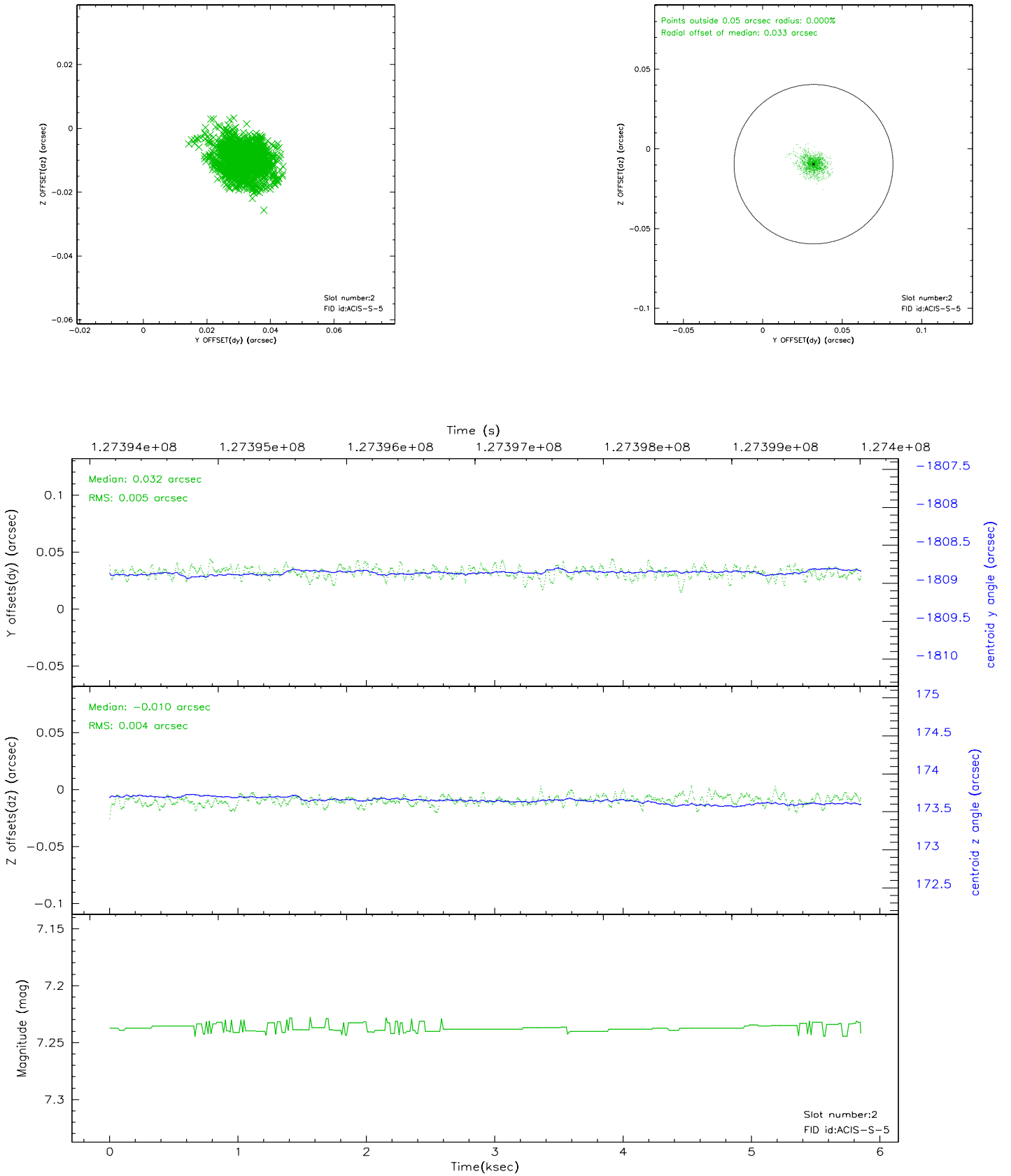
2.5.1 Slot 0



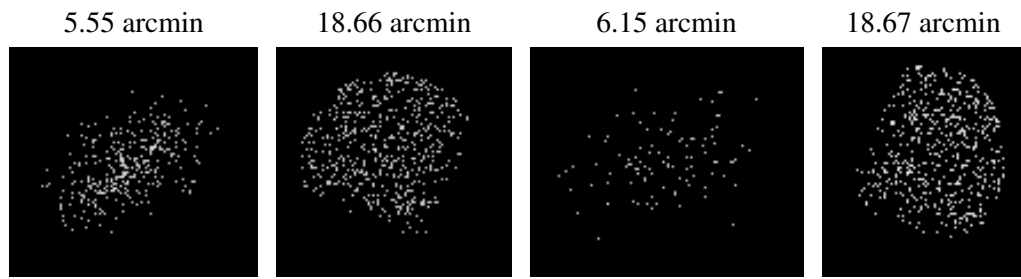
2.5.2 Slot 1



2.5.3 Slot 2



3 Point Sources



A Summary

A.1 Status

V&V Scientist	Beth Sundheim
V&V Date (YYYY-MM-DD)	2006.09.01
V&V Edition	1
V&V Disposition and Status	OK
V&V Charge Time	5.849

A.2 Comments