

V&V Reference Report

L2 ASCDS Version : 7.6.10

Observation 3152 - L2 Version 001
Chandra X-Ray Center

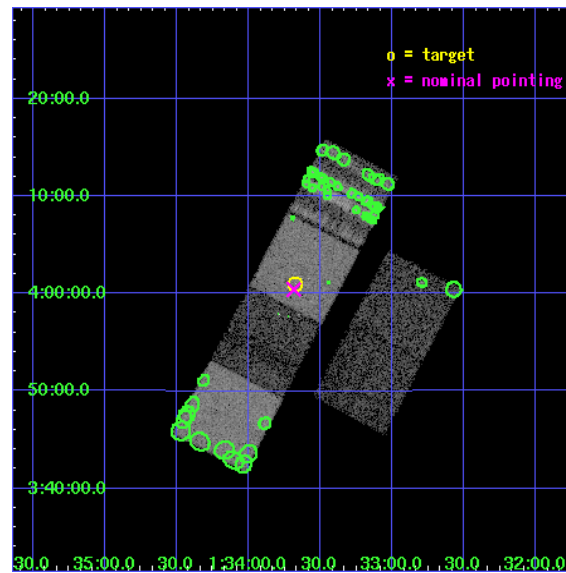
L2 Processing Date : Jan 21 2007

Contents

1	Front	2
2	OBI	3
2.1	OBI	3
2.1.1	Images	3
2.1.2	Bias	3
2.1.3	Parameters	4
2.1.4	Events	4
2.2	Compared Parameters	5
2.3	Aspect	6
2.4	Star Slots	9
2.4.1	Slot 3	9
2.4.2	Slot 4	10
2.4.3	Slot 5	11
2.4.4	Slot 6	12
2.4.5	Slot 7	13
2.5	FID Slots	14
2.5.1	Slot 0	14
2.5.2	Slot 1	15
2.5.3	Slot 2	16
3	Point Sources	17
A	Summary	18
A.1	Status	18
A.2	Comments	18

1 Front

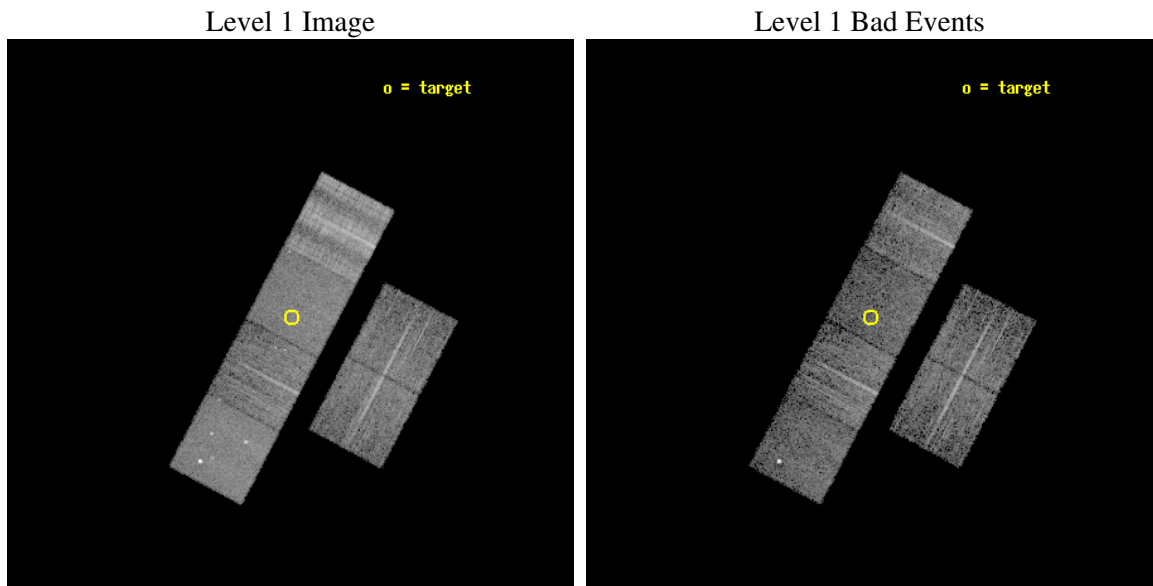
seq_num	700591
obs_id	3152
title	A CHANDRA SURVEY OF THE MOST LUMINOUS QUASARS AT $Z > 4$
observer	Professor Gordon Garmire
object	PSS0133+0400
dtcycle	0
cycle	P
ra_targ	23.418333
dec_targ	4.016389
ra_nom	23.421232411066
dec_nom	4.0071411306866
roll_nom	297.726279585
revision	2
ontime	6153.600005731
livetime	6075.6794172053
ontime2	6153.600005731
ontime3	6153.600005731
ontime5	6153.600005731
ontime6	6153.600005731
ontime7	6153.600005731
ontime8	6153.600005731
l2events	92111



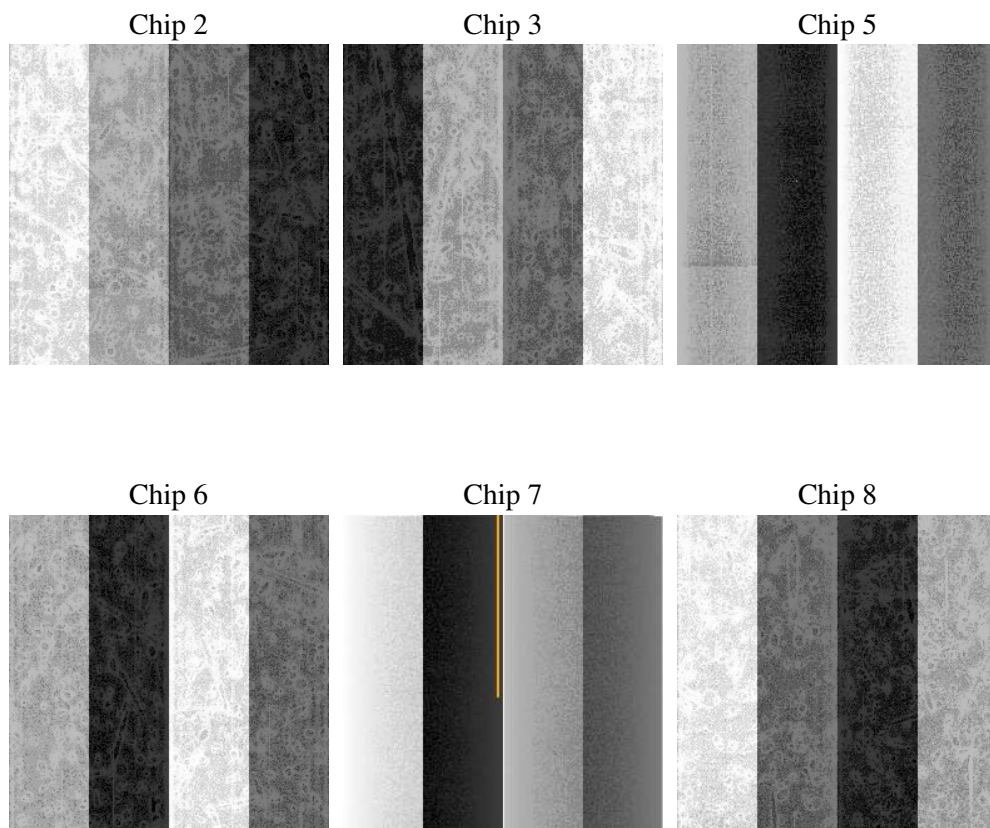
2 OBI

2.1 OBI

2.1.1 Images



2.1.2 Bias



2.1.3 Parameters

obi_num	1
ascdsver	7.6.10
caldsver	3.3.0
date	2007-01-20T09:44:44
revision	2

sched_exp_time	6000.000000
ontime	6153.600005731
ontime2	6153.600005731
ontime3	6153.600005731
ontime5	6153.600005731
ontime6	6153.600005731
ontime7	6153.600005731
ontime8	6153.600005731
l1events	607385

2.1.4 Events

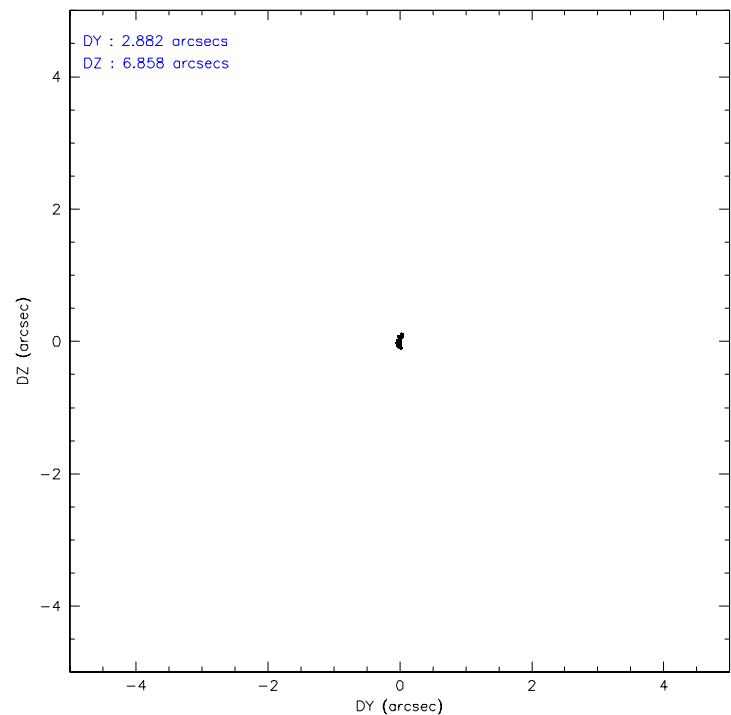
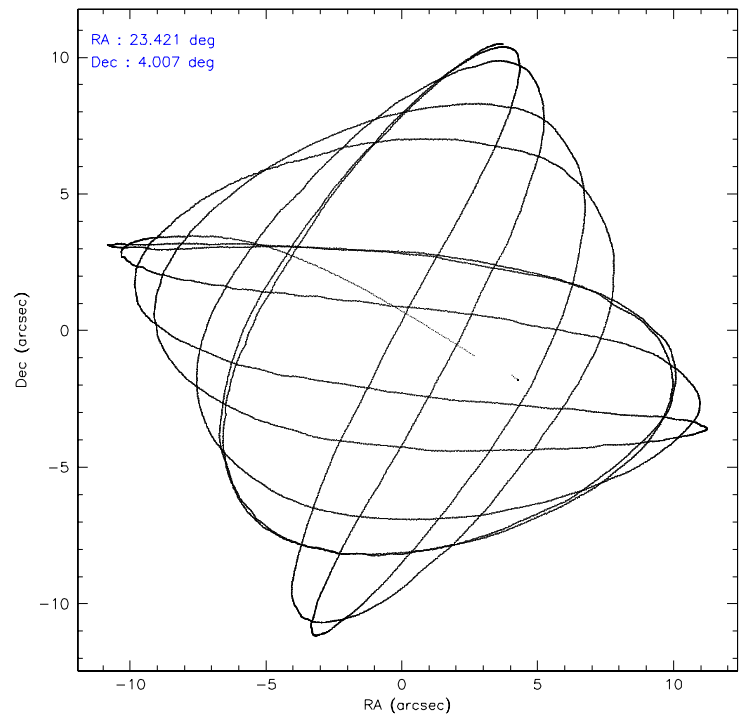
	ccd 2	ccd 3	ccd 5	ccd 6	ccd 7	ccd 8
level 1 events	75866	76895	126943	81803	120997	124881
rejected events	68533	70144	96321	73942	94587	82637
rejected %	90%	91%	75%	90%	78%	66%

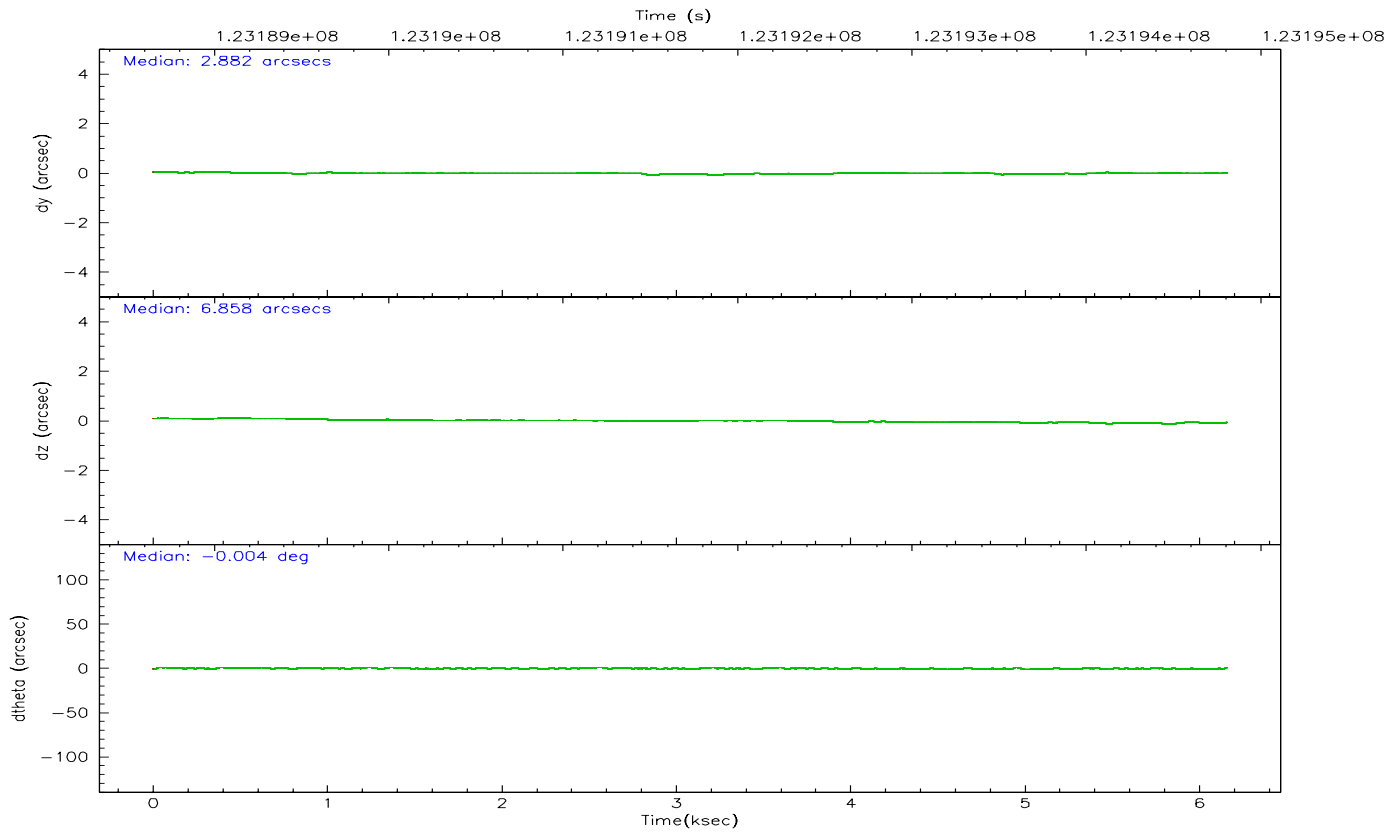
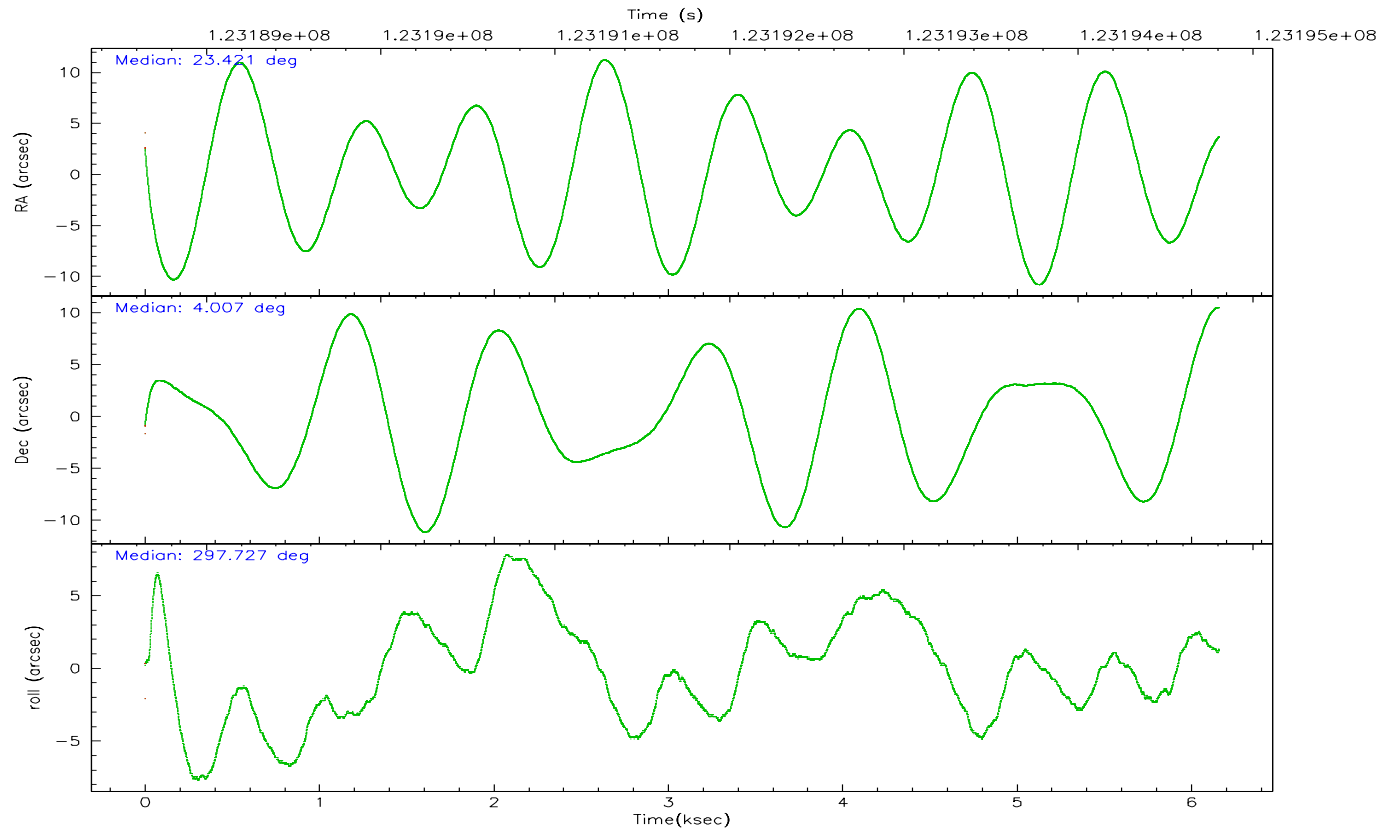
	ccd 2	ccd 3	ccd 5	ccd 6	ccd 7	ccd 8
grade 0 events	17171	17928	16395	18503	16833	29713
	22%	23%	12%	22%	13%	23%
grade 1 events	107	100	188	96	109	192
	0%	0%	0%	0%	0%	0%
grade 2 events	6311	6272	28165	6704	17976	11781
	8%	8%	22%	8%	14%	9%
grade 3 events	2029	2150	4900	2104	8071	8922
	2%	2%	3%	2%	6%	7%
grade 4 events	2201	2239	4947	2130	8306	8283
	2%	2%	3%	2%	6%	6%
grade 5 events	1674	1890	6684	2056	6201	2951
	2%	2%	5%	2%	5%	2%
grade 6 events	4851	4969	29706	5610	32746	13894
	6%	6%	23%	6%	27%	11%
grade 7 events	41522	41347	35958	44600	30755	49145
	54%	53%	28%	54%	25%	39%

2.2 Compared Parameters

Parameter	Planned	Actual	Parameter	Planned	Actual
Instrument	ACIS	ACIS	Obspar format version number	6	6
Detector	ACIS-235678	ACIS-235678	Obspar file type	PREDICTED	ACTUAL
Grating	NONE	NONE	Obspar update status	NONE	UPDATED
Data mode	FAINT	FAINT	Number of optional ACIS chips dropped	0	0
Observation mode	POINTING	POINTING	On-chip summing requested	N	N
Pointing RA	23.397995	23.4212324110657	Subarray requested	NONE	NONE
Pointing Dec	4.021401	4.007141130686612	Alternating exposures requested	N	N
Pointing Roll	297.571290	297.7262795850029	Primary exposure time	0.000000	3.2
SIM focus pos (mm)	-0.684267	-0.6828225247311905			
SIM defocus (mm)	0	0.001444936568705701			
SIM translation stage pos (mm)	-190.132523	-190.1400660498719			
SIM translation stage offset (mm)	0	0.00754346686406393			
Observation start time	123188806.184000	123186937.73991			
Observation start date	2001-11-26T19:05:42	2001-11-26T18:35:37			
Observation end time	123194806.184000	123195339.15274			
Observation end date	2001-11-26T20:45:42	2001-11-26T20:55:39			
Read mode	TIMED	TIMED			

2.3 Aspect



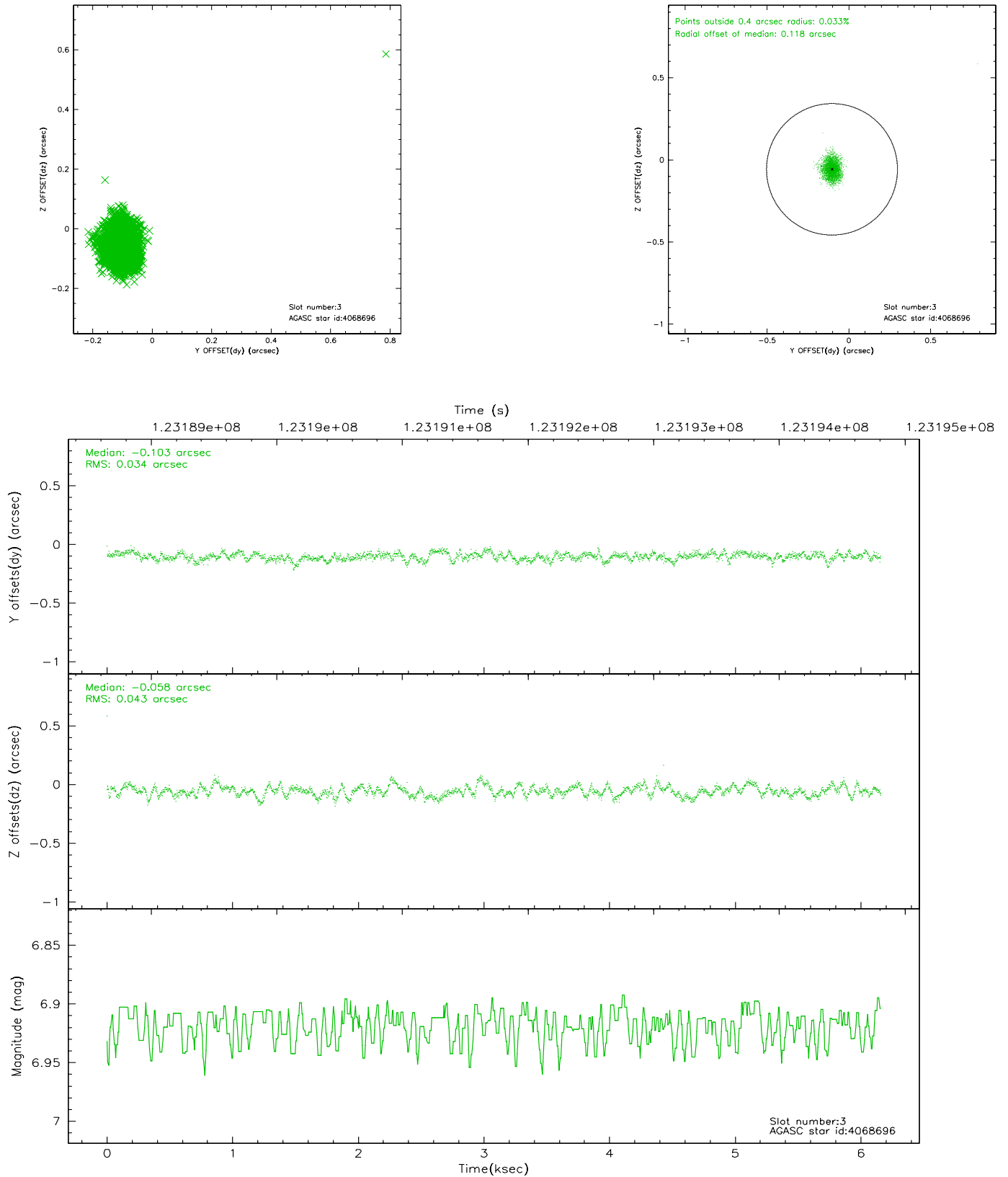


Slot Statistics

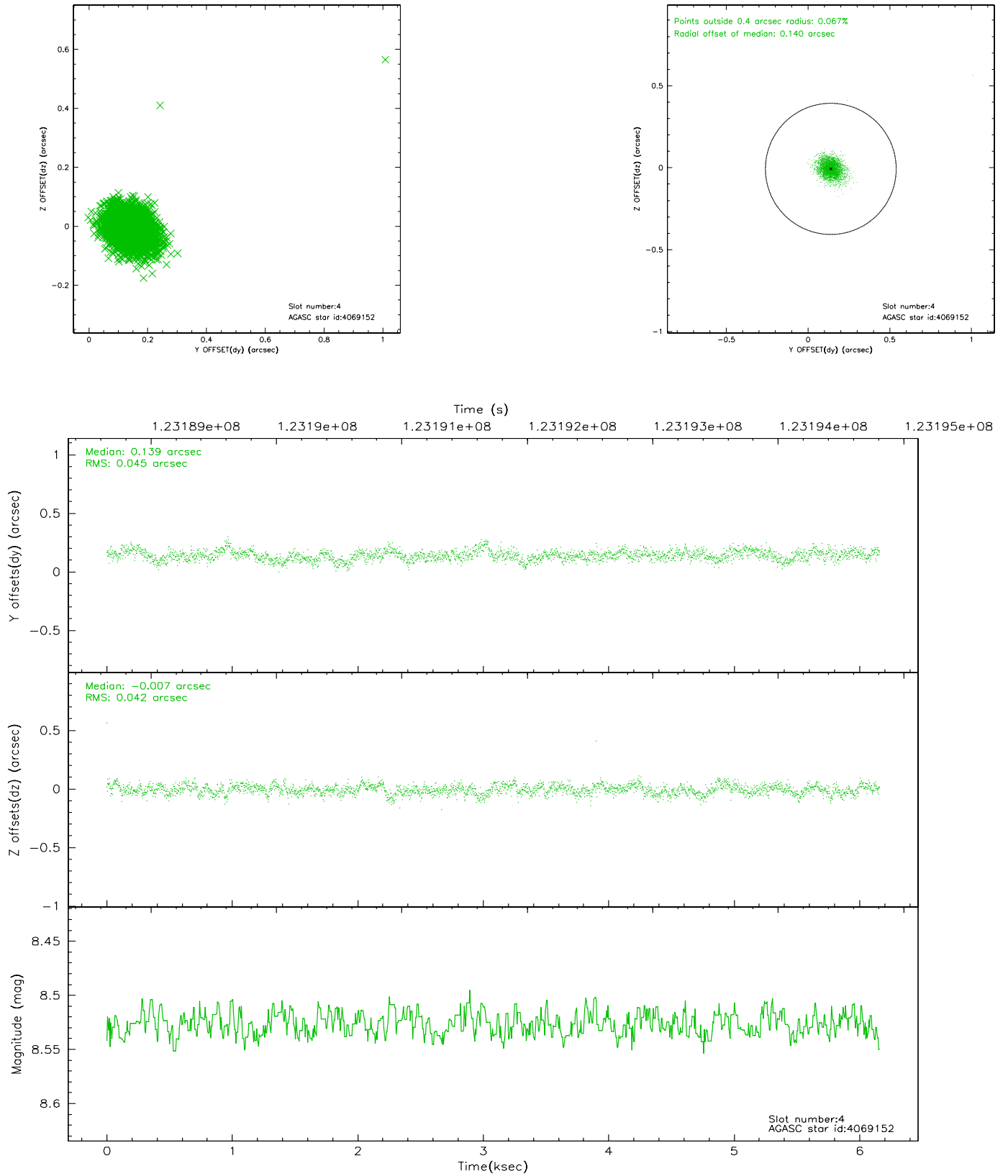
slot	status	id	mag	n_pts	med_dy	med_dz	dr1	dr2	ra	dec	mean_y	mean_z
0	FID	ACIS-S-2	7.11	1503	-0.004	0.040	0.006	0.010	0.000000	0.000000	-755.51	-1727.98
1	FID	ACIS-S-4	7.20	1503	-0.083	-0.009	0.005	0.009	0.000000	0.000000	2157.24	179.48
2	FID	ACIS-S-5	7.24	1503	0.056	-0.023	0.006	0.011	0.000000	0.000000	-1807.07	174.20
3	GUIDE	4068696	6.92	3006	-0.103	-0.058	0.055	0.089	23.062241	3.685161	513.34	-1629.95
4	GUIDE	4069152	8.53	3005	0.139	-0.007	0.061	0.102	23.439527	3.772164	863.72	-284.01
5	GUIDE	4072960	9.58	2999	0.003	0.088	0.134	0.219	23.864885	3.550178	2279.01	701.75
6	GUIDE	4069416	9.85	3001	-0.071	0.117	0.121	0.194	23.541357	4.773002	-2160.86	1708.23
7	GUIDE	4068320	9.87	3003	0.036	-0.146	0.107	0.169	22.964610	3.897864	-328.34	-1585.53

2.4 Star Slots

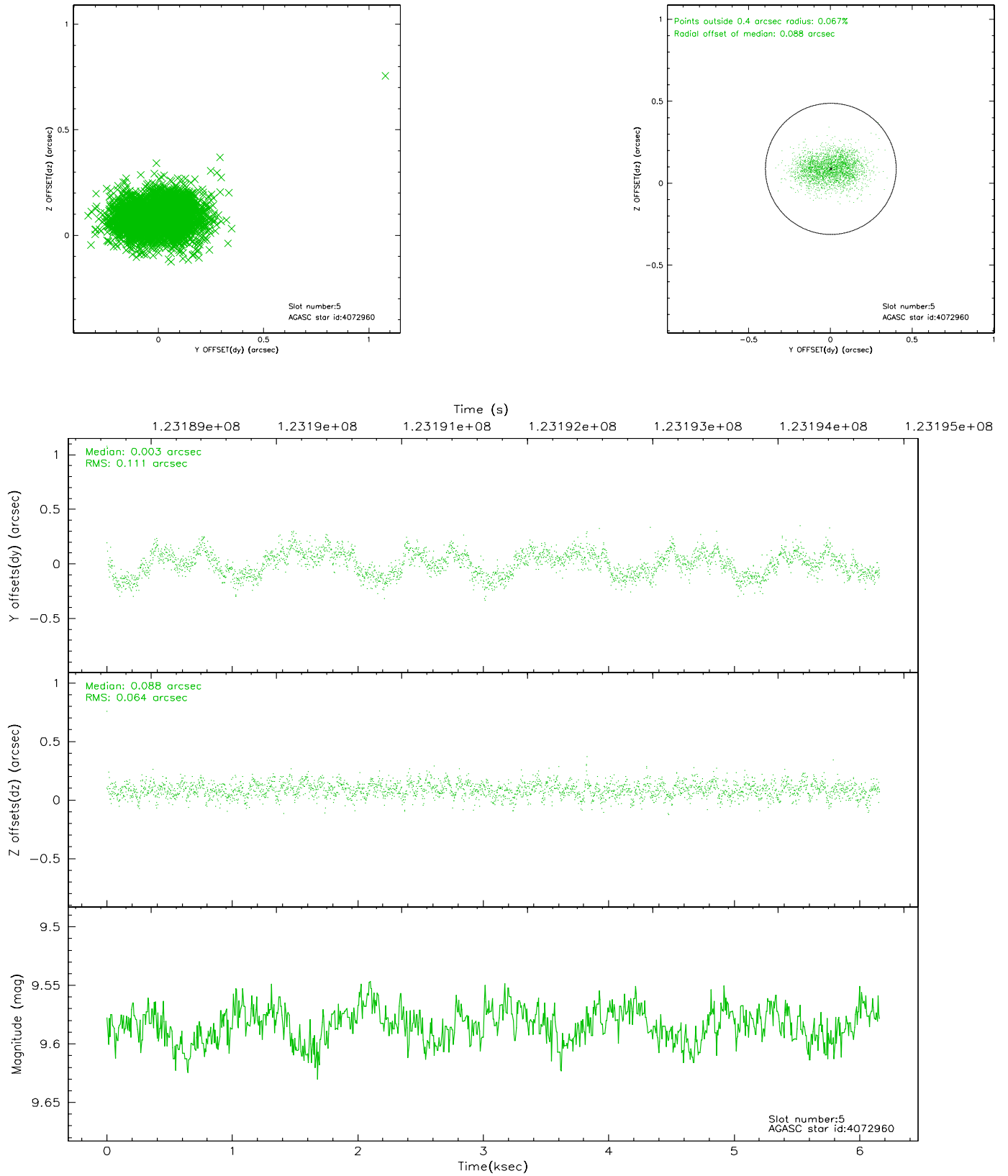
2.4.1 Slot 3



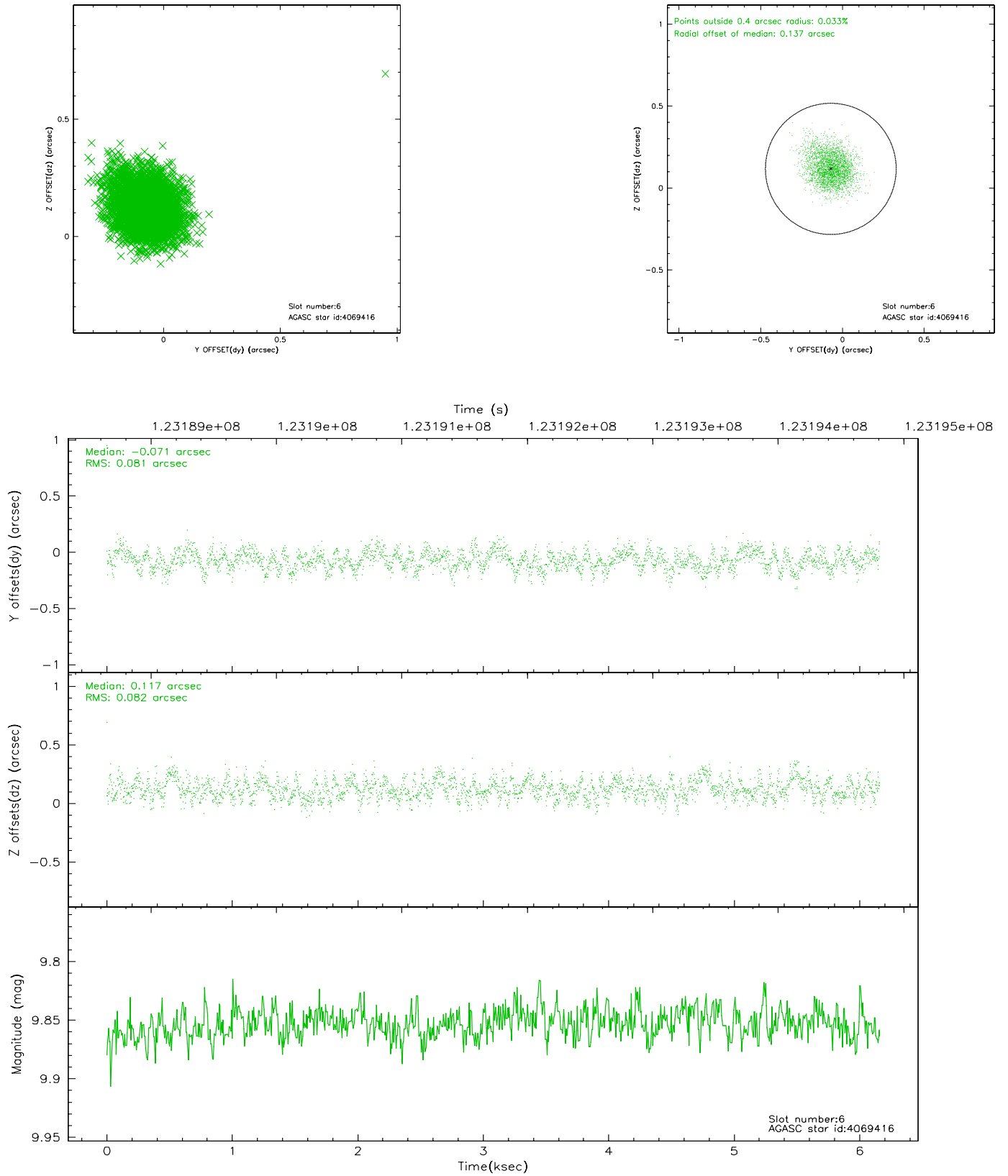
2.4.2 Slot 4



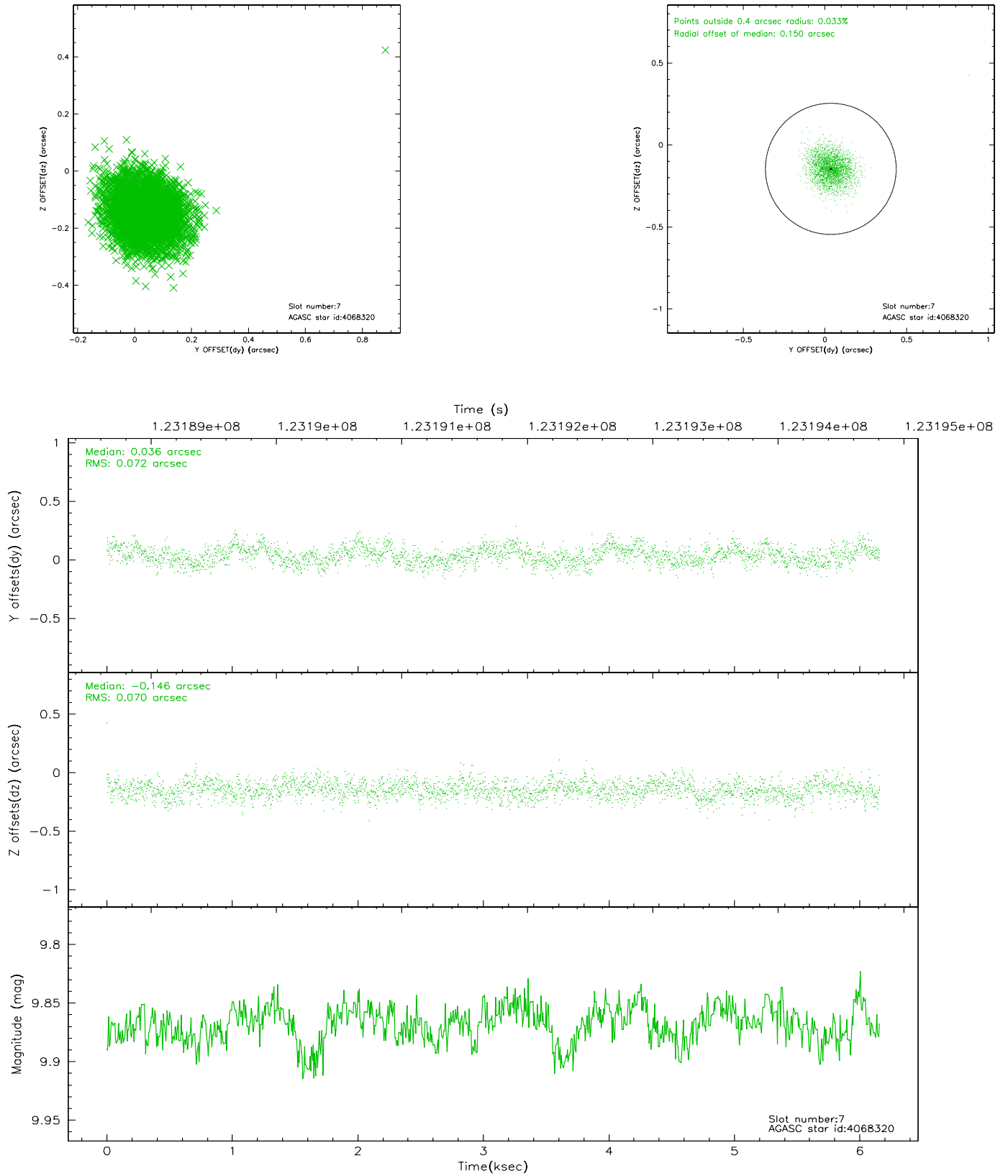
2.4.3 Slot 5



2.4.4 Slot 6

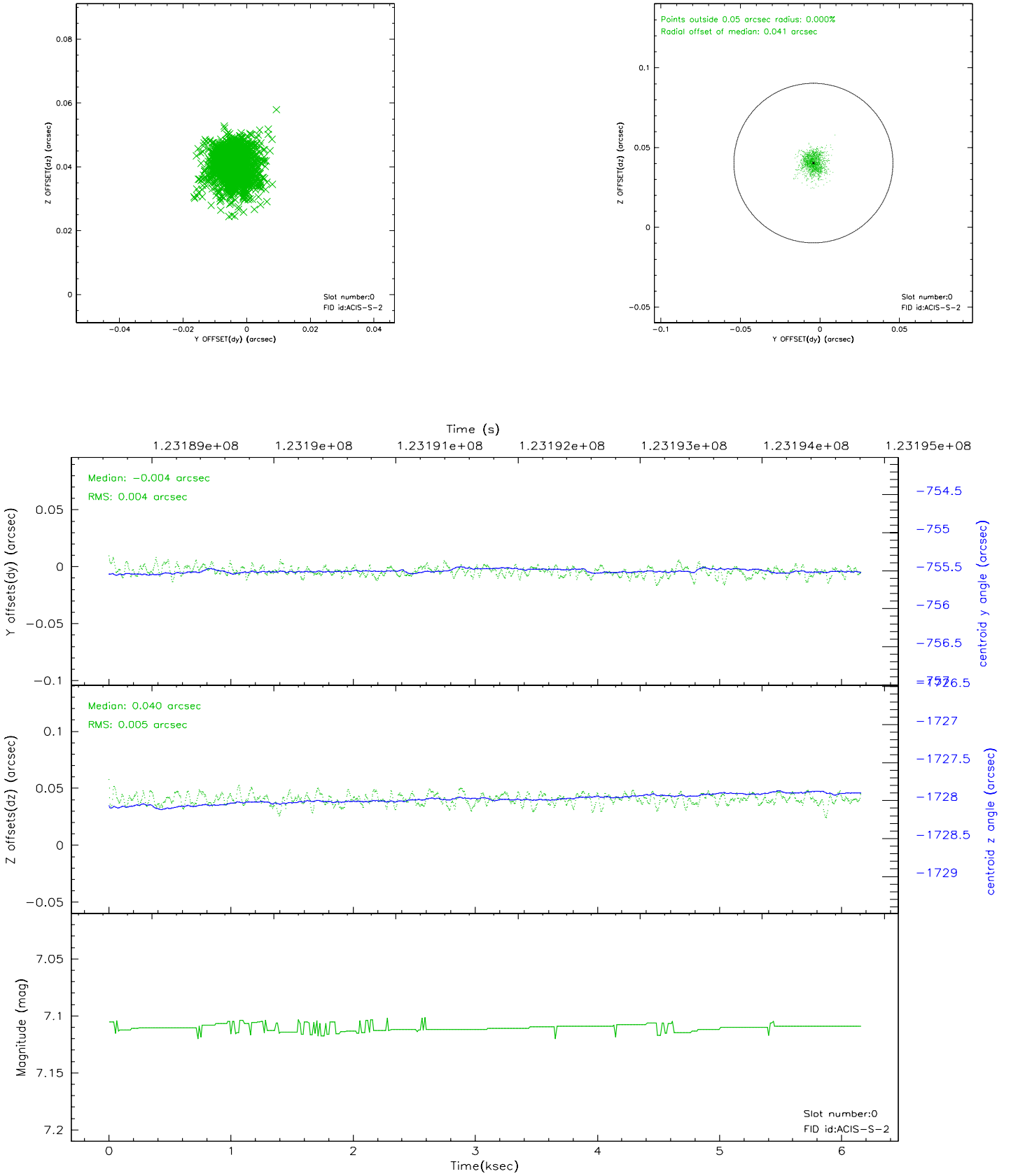


2.4.5 Slot 7

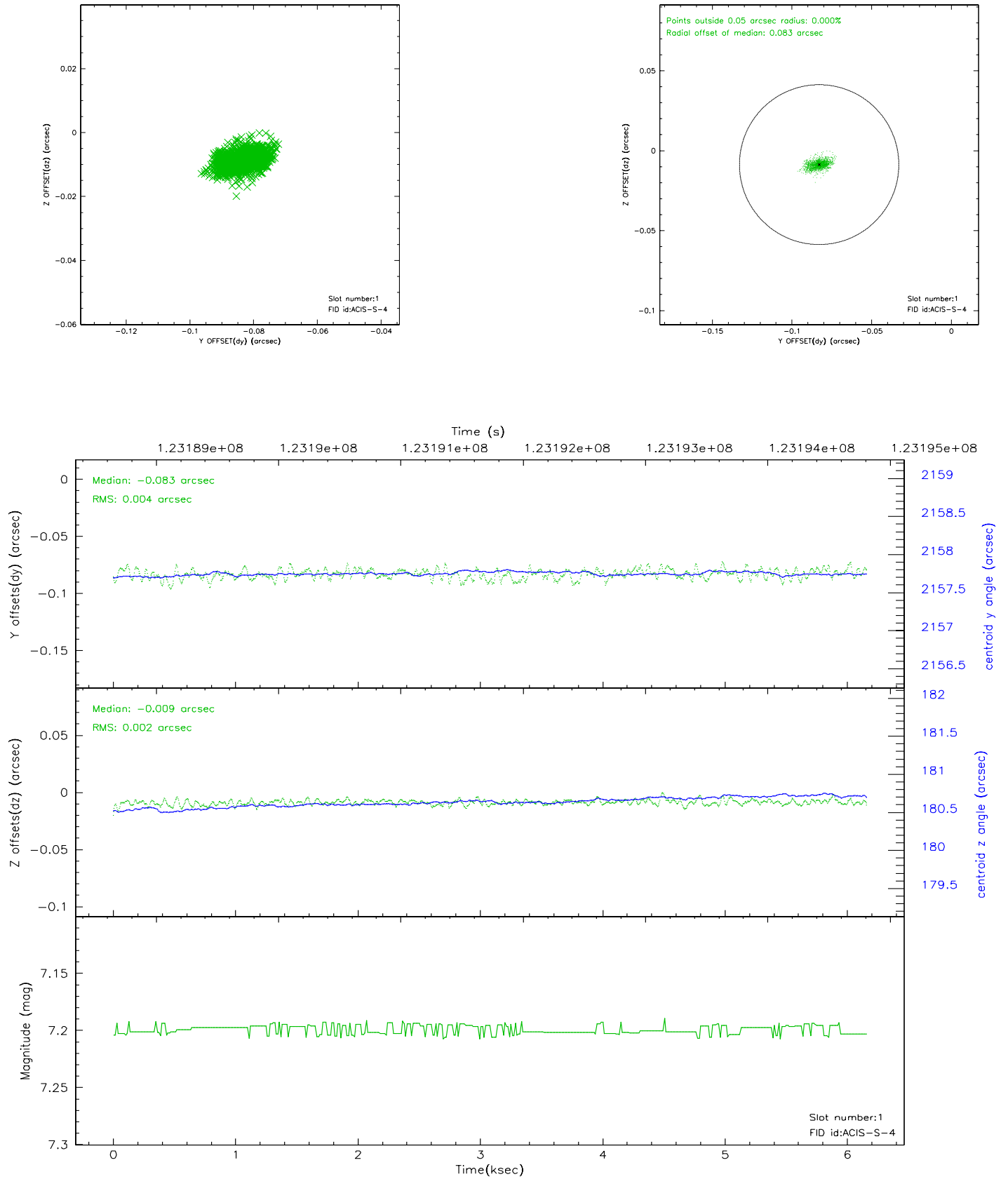


2.5 FID Slots

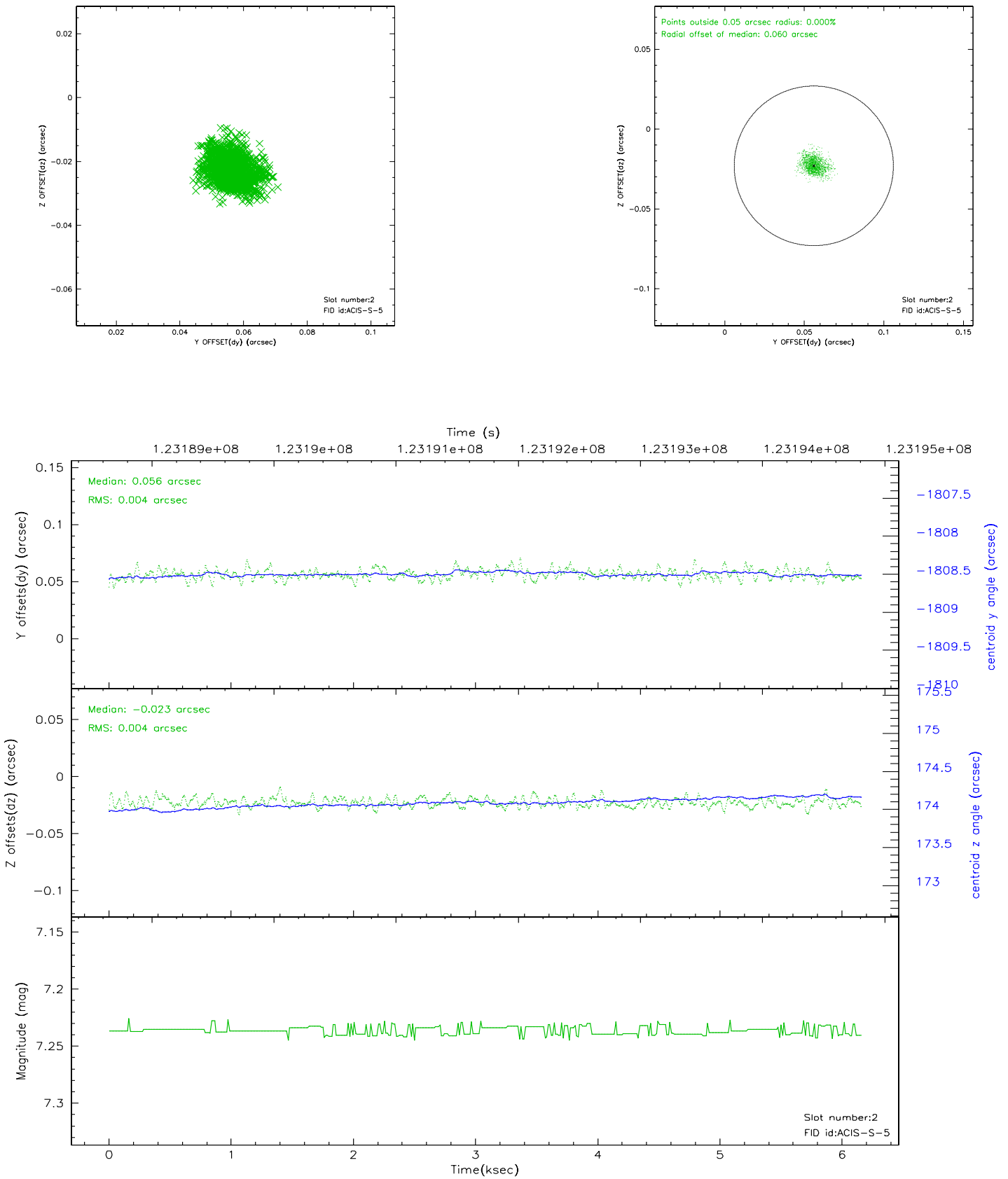
2.5.1 Slot 0



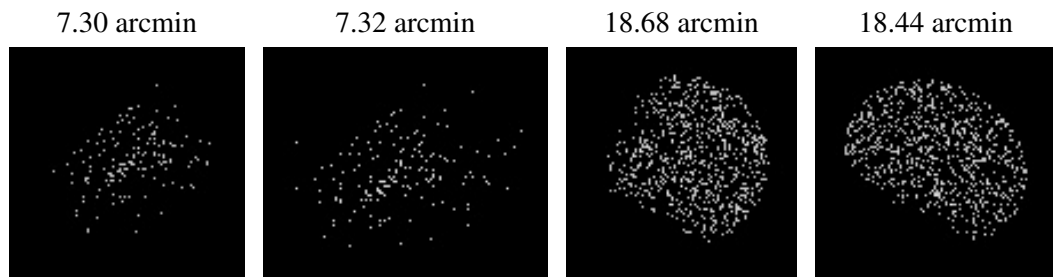
2.5.2 Slot 1



2.5.3 Slot 2



3 Point Sources



A Summary

A.1 Status

V&V Scientist	Beth Sundheim
V&V Date (YYYY-MM-DD)	2007.01.21
V&V Edition	1
V&V Disposition and Status	OK
V&V Charge Time	6.153

A.2 Comments