

# V&V Reference Report

## L2 ASCDS Version : 7.6.9

Observation 3139 - L2 Version 001  
Chandra X-Ray Center

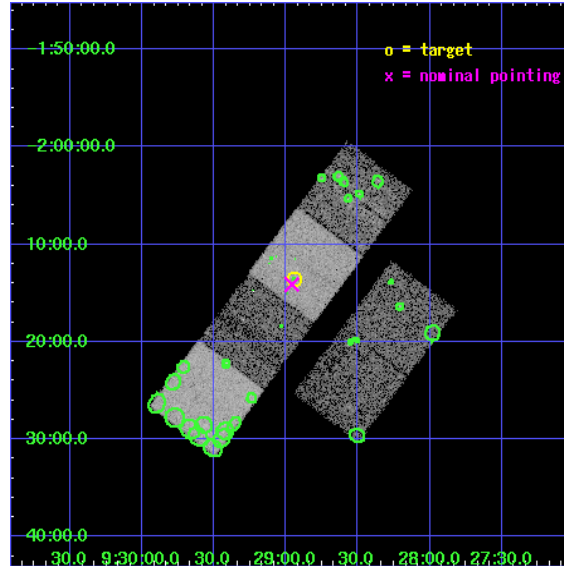
L2 Processing Date : Sep 21 2006

## Contents

<b>1</b>	<b>Front</b>	<b>2</b>
<b>2</b>	<b>OBI</b>	<b>3</b>
2.1	OBI . . . . .	3
2.1.1	Images . . . . .	3
2.1.2	Bias . . . . .	3
2.1.3	Parameters . . . . .	4
2.1.4	Events . . . . .	4
2.2	Compared Parameters . . . . .	5
2.3	Aspect . . . . .	6
2.4	Star Slots . . . . .	9
2.4.1	Slot 3 . . . . .	9
2.4.2	Slot 4 . . . . .	10
2.4.3	Slot 5 . . . . .	11
2.4.4	Slot 6 . . . . .	12
2.4.5	Slot 7 . . . . .	13
2.5	FID Slots . . . . .	14
2.5.1	Slot 0 . . . . .	14
2.5.2	Slot 1 . . . . .	15
2.5.3	Slot 2 . . . . .	16
<b>3</b>	<b>Point Sources</b>	<b>17</b>
<b>A</b>	<b>Summary</b>	<b>18</b>
A.1	Status . . . . .	18
A.2	Comments . . . . .	18

# 1 Front

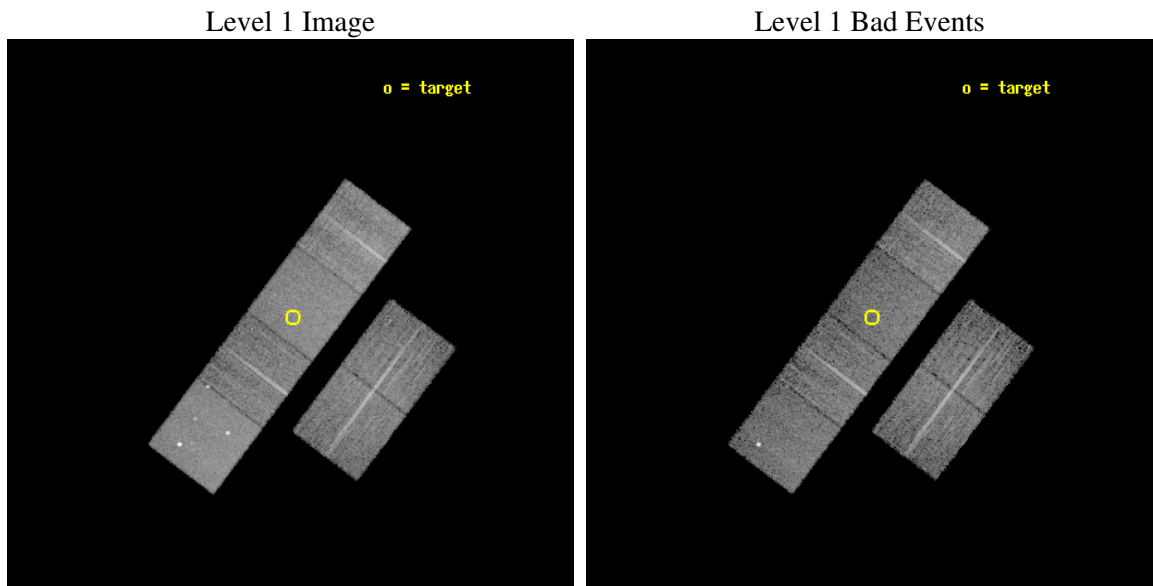
seq_num	700578
obs_id	3139
title	PROBING THE X-RAY EMISSION OF HIGH LUMINOSITY EMISSION LINE GALAXIES: QUASAR-2s AND THE STARBURST-AGN CONNECTION
observer	Prof. Paolo Coppi
object	QUEST 0928-0213
dtcycle	0
cycle	P
ra_targ	142.235417
dec_targ	-2.226528
ra_nom	142.23987112122
dec_nom	-2.2352081281365
roll_nom	306.9925431669
revision	4
ontime	8940.8000083268
livetime	8827.5862151179
ontime2	8940.8000083268
ontime3	8940.8000083268
ontime5	8940.8000083268
ontime6	8940.8000083268
ontime7	8940.8000083268
ontime8	8937.5590380579
l2events	94808



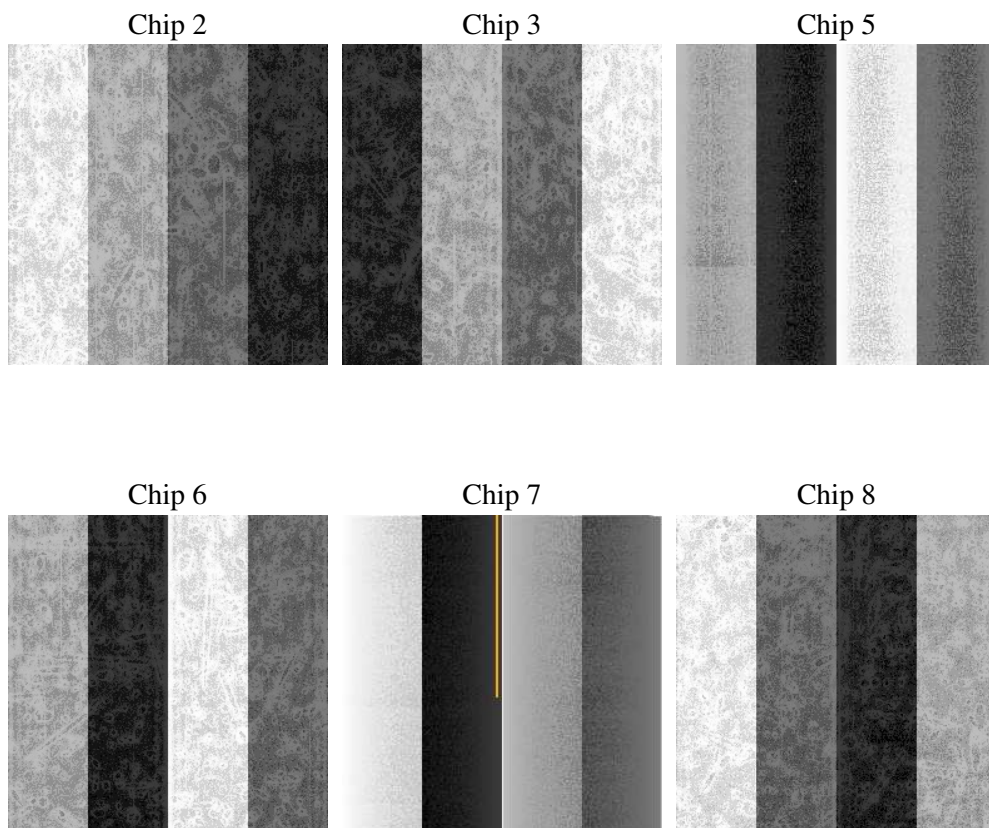
## 2 OBI

### 2.1 OBI

#### 2.1.1 Images



#### 2.1.2 Bias



### 2.1.3 Parameters

obi_num	0
ascdsver	7.6.9
caldbver	3.2.3
date	2006-09-21T14:16:35
revision	4

sched_exp_time	9200.000000
ontime	8945.170191139
ontime2	8945.170191139
ontime3	8945.170191139
ontime5	8945.170191139
ontime6	8945.170191139
ontime7	8945.170191139
ontime8	8941.9291012883
l1events	442999

### 2.1.4 Events

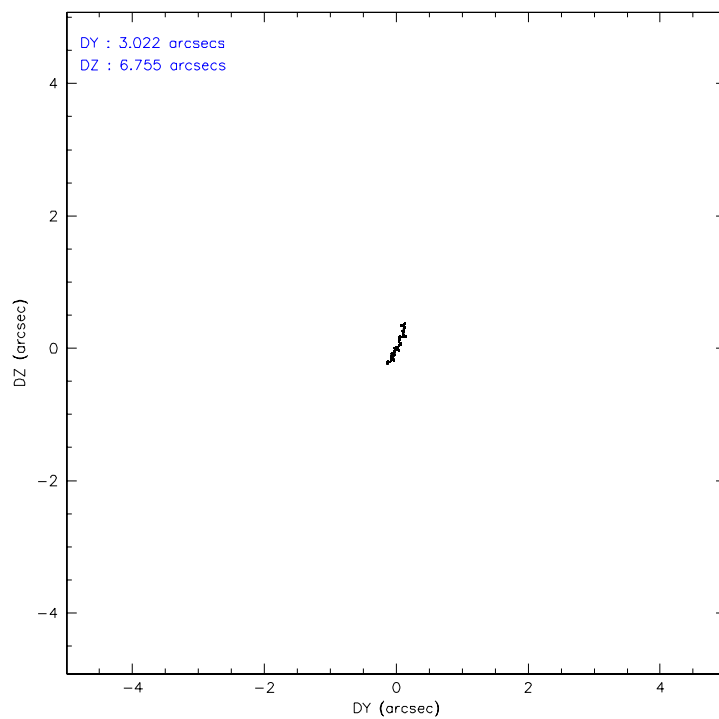
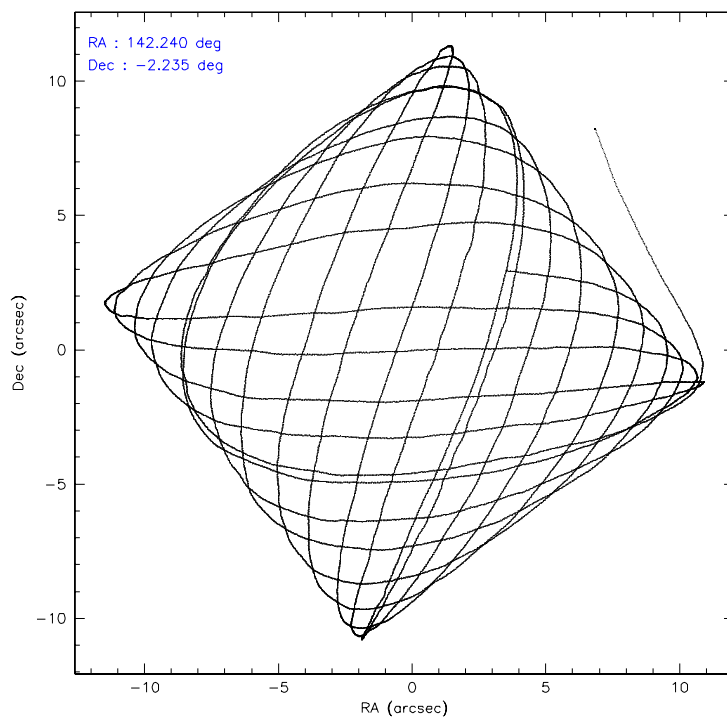
	ccd 2	ccd 3	ccd 5	ccd 6	ccd 7	ccd 8
level 1 events	62549	60050	90545	62839	79535	87481
rejected events	55050	52555	50431	55113	48733	65988
rejected %	88%	87%	55%	87%	61%	75%

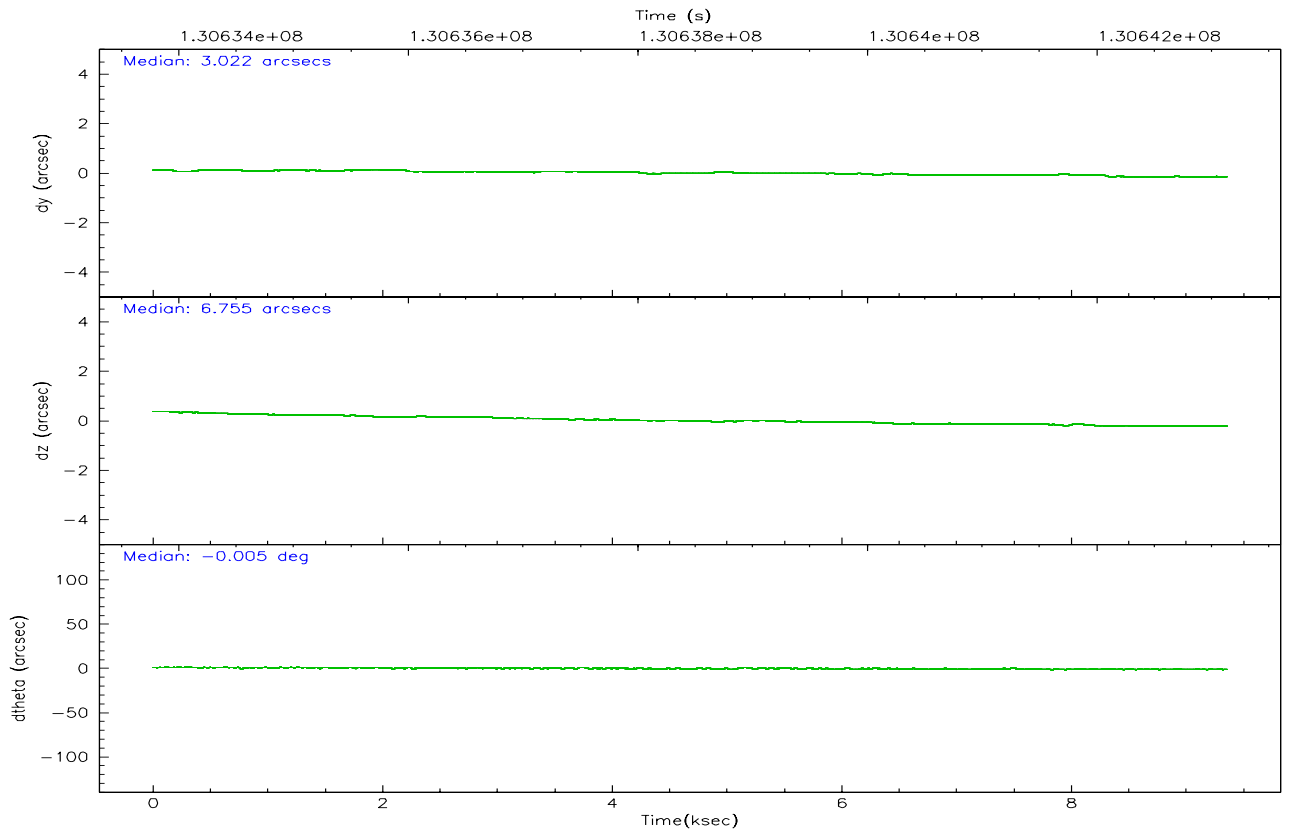
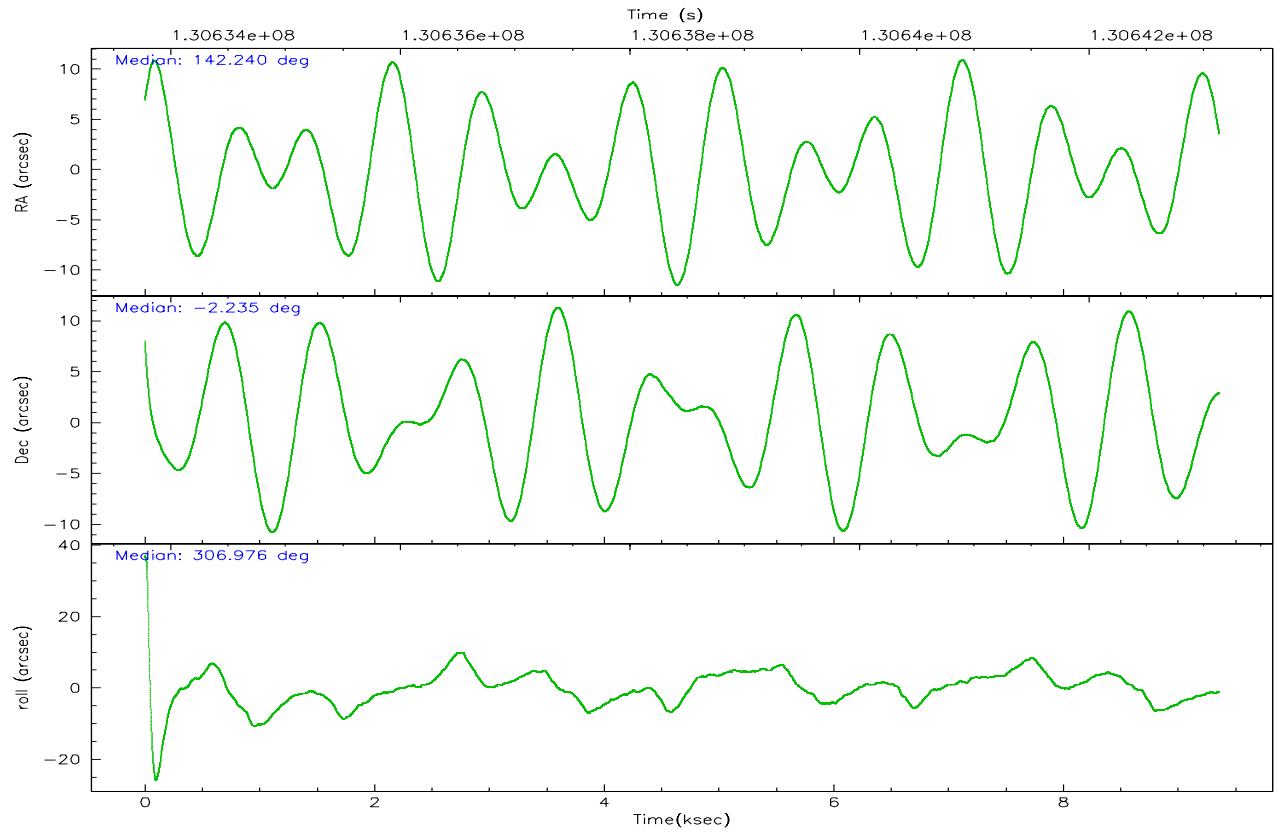
	ccd 2	ccd 3	ccd 5	ccd 6	ccd 7	ccd 8
grade 0 events	3134	3107	3911	3213	1953	7122
	5%	5%	4%	5%	2%	8%
grade 1 events	25	21	112	35	45	66
	0%	0%	0%	0%	0%	0%
grade 2 events	1697	1640	12412	1726	7632	4049
	2%	2%	13%	2%	9%	4%
grade 3 events	619	689	963	677	1590	2780
	0%	1%	1%	1%	1%	3%
grade 4 events	638	660	862	705	1502	2487
	1%	1%	0%	1%	1%	2%
grade 5 events	2182	2346	5643	2721	5279	3415
	3%	3%	6%	4%	6%	3%
grade 6 events	1415	1400	21984	1410	18138	5059
	2%	2%	24%	2%	22%	5%
grade 7 events	52839	50187	44658	52352	43396	62503
	84%	83%	49%	83%	54%	71%

## 2.2 Compared Parameters

Parameter	Planned	Actual	Parameter	Planned	Actual
Instrument	ACIS	ACIS	Obspar format version number	6	6
Detector	ACIS-235678	ACIS-235678	Obspar file type	PREDICTED	ACTUAL
Grating	NONE	NONE	Obspar update status	NONE	UPDATED
Data mode	FAINT	FAINT	Number of optional ACIS chips dropped	0	0
Observation mode	POINTING	POINTING	On-chip summing requested	N	N
Pointing RA	142.214564	142.2398711212207	Subarray requested	NONE	NONE
Pointing Dec	-2.224846	-2.235208128136483	Alternating exposures requested	N	N
Pointing Roll	306.834834	306.9925431668993	Primary exposure time	0.000000	3.2
SIM focus pos (mm)	-0.684267	-0.6828225247311905			
SIM defocus (mm)	0	0.001444936568705701			
SIM translation stage pos (mm)	-190.132523	-190.1425803651734			
SIM translation stage offset (mm)	0	0.01005778216563158			
Observation start time	130633933.184000	130633036.70169			
Observation start date	2002-02-20T23:11:09	2002-02-20T22:57:16			
Observation end time	130643133.184000	130643722.83962			
Observation end date	2002-02-21T01:44:29	2002-02-21T01:55:22			
Read mode	TIMED	TIMED			

## 2.3 Aspect





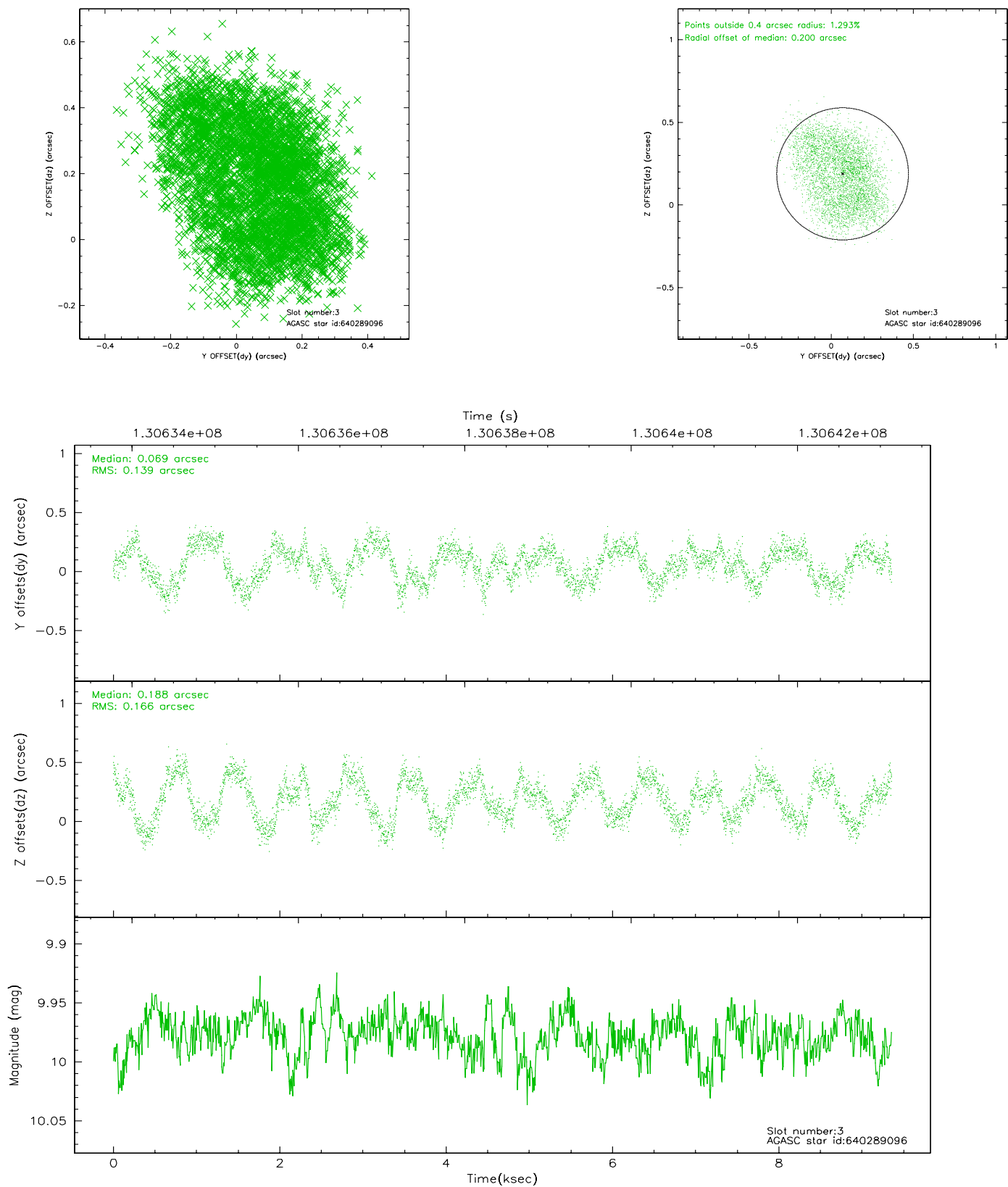
### Slot Statistics

slot	status	id	mag	n_pts	med_dy	med_dz	dr1	dr2	ra	dec	mean_y	mean_z
0	FID	ACIS-S-2	7.12	2283	-0.008	0.031	0.008	0.014	0.000000	0.000000	-755.66	-1727.87
1	FID	ACIS-S-4	7.20	2283	-0.068	-0.004	0.005	0.009	0.000000	0.000000	2157.28	180.01
2	FID	ACIS-S-5	7.24	2283	0.045	-0.018	0.008	0.015	0.000000	0.000000	-1807.73	174.29
3	GUIDE	640289096	9.98	4563	0.069	0.188	0.238	0.347	142.088285	-2.112130	-596.57	-121.46
4	GUIDE	640293800	10.28	4561	0.082	0.031	0.123	0.203	142.046495	-2.488056	396.58	-1052.92
5	GUIDE	640293968	8.48	4563	-0.129	0.131	0.096	0.152	142.391156	-2.909281	2353.41	-969.64
6	GUIDE	640299248	6.47	4566	-0.162	-0.287	0.072	0.122	142.351842	-2.205173	240.01	436.15
7	GUIDE	641865728	10.14	4552	0.143	-0.056	0.134	0.215	142.657425	-2.550701	1894.49	570.87

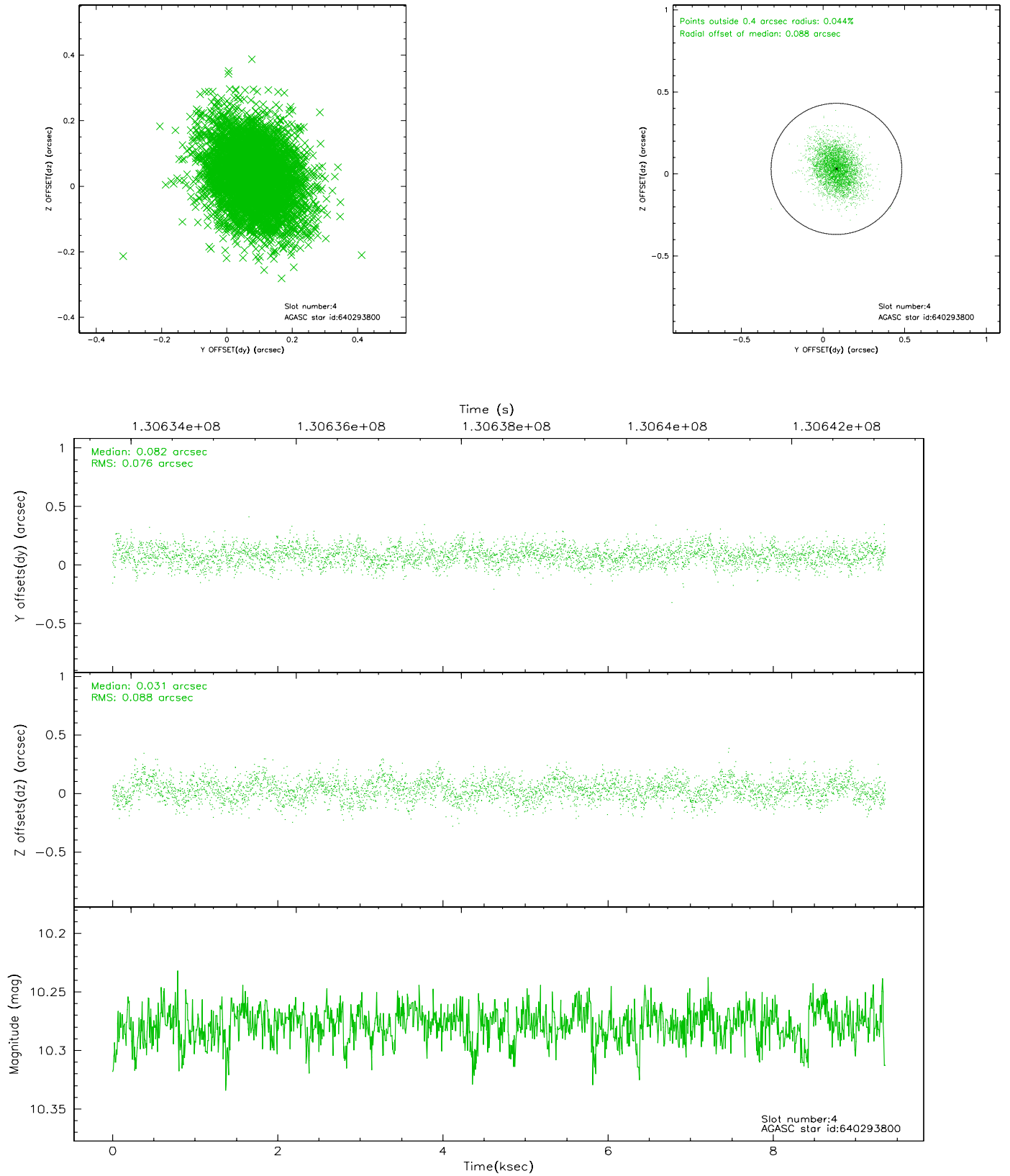


## 2.4 Star Slots

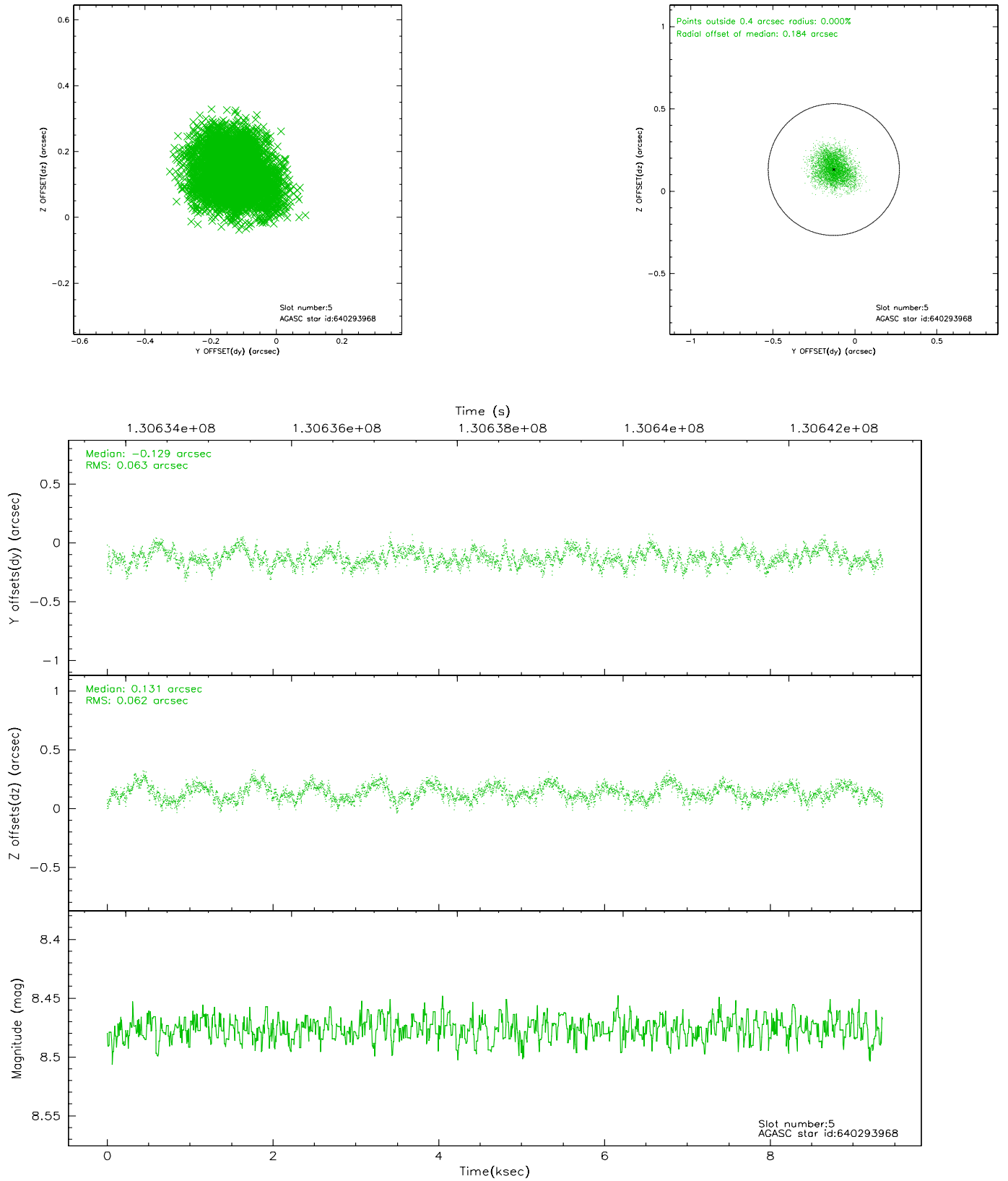
### 2.4.1 Slot 3



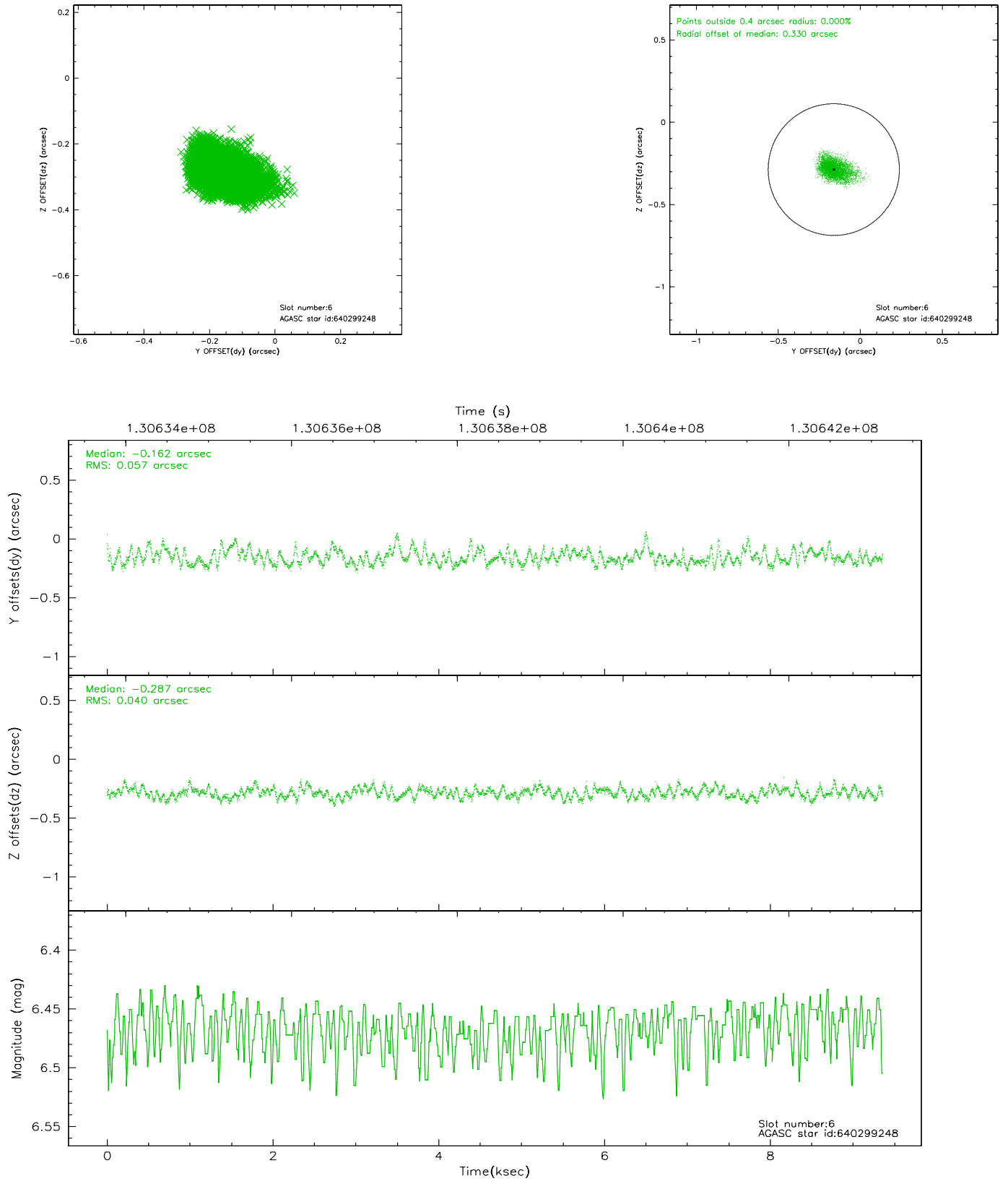
## 2.4.2 Slot 4



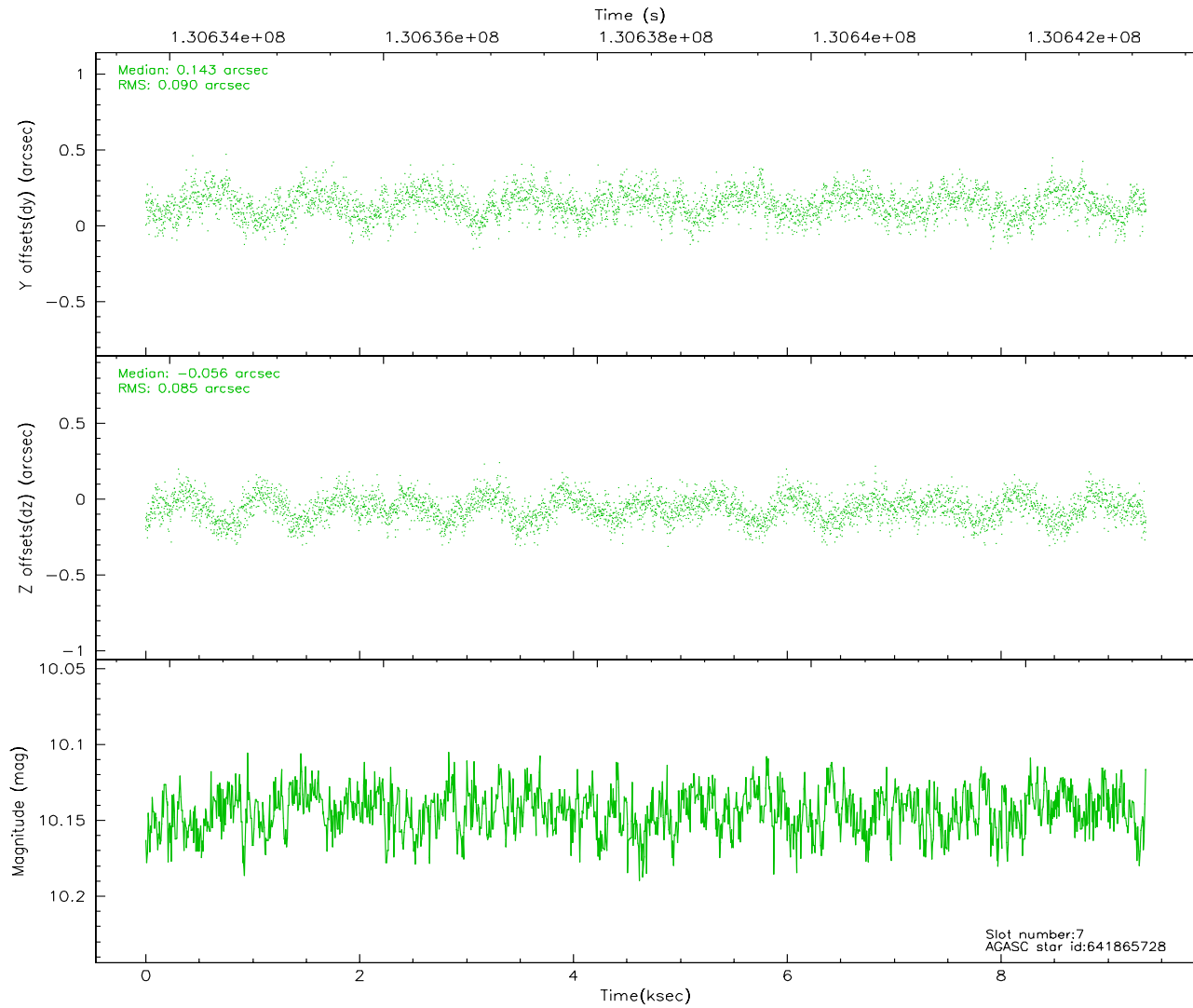
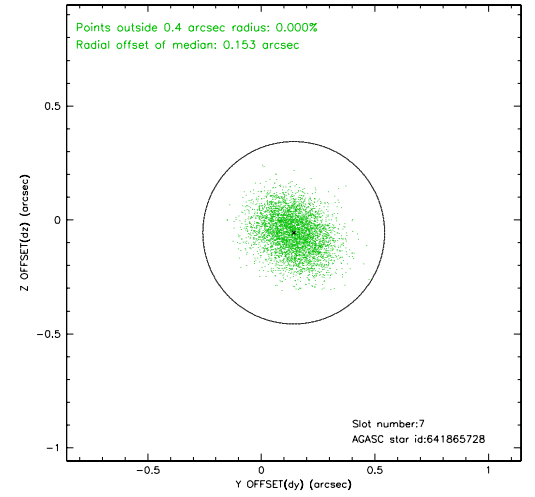
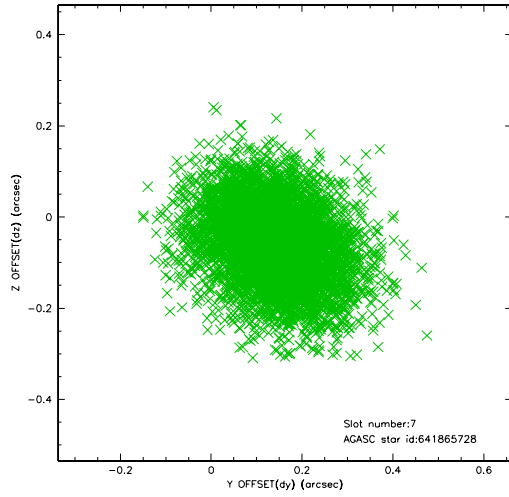
### 2.4.3 Slot 5



## 2.4.4 Slot 6

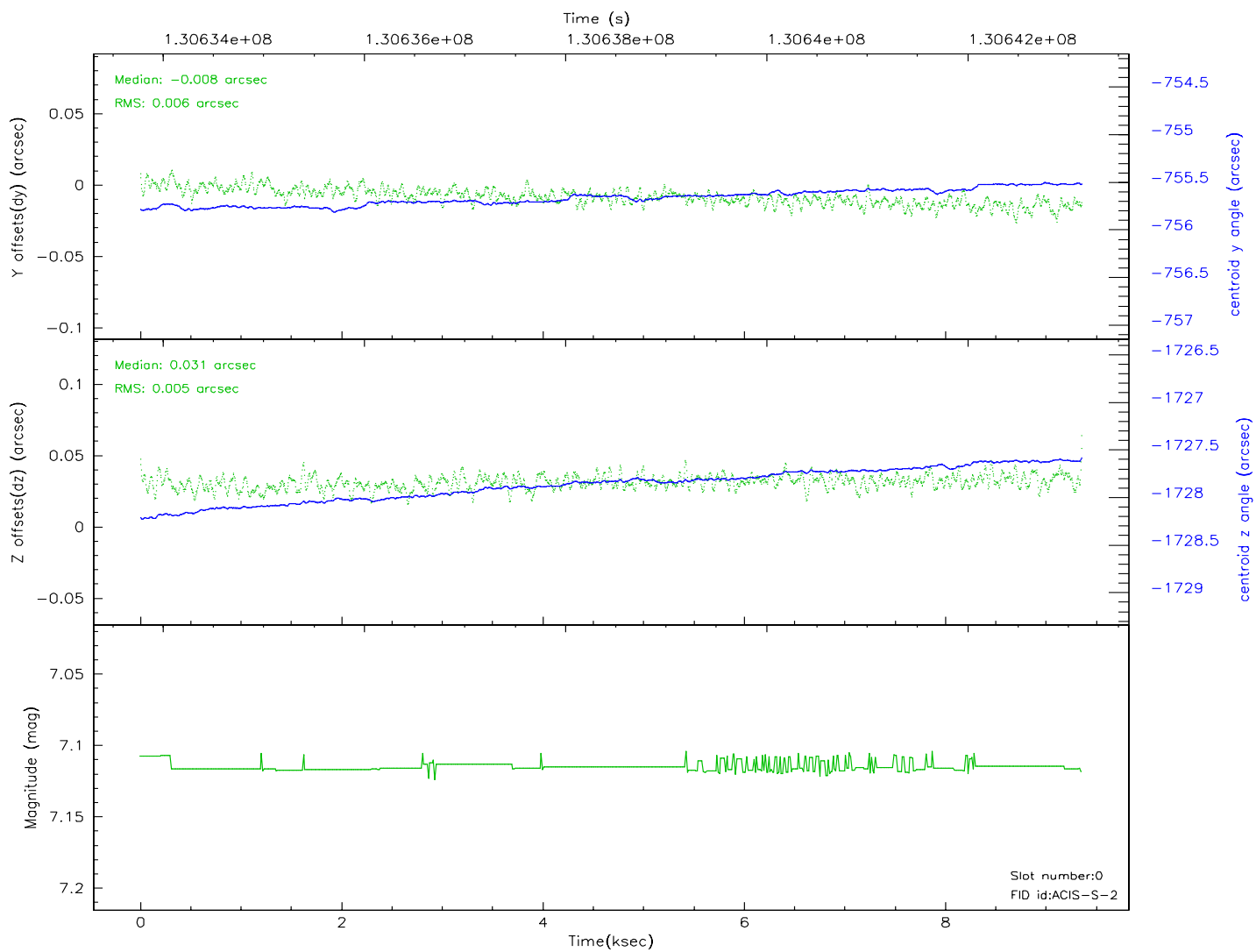
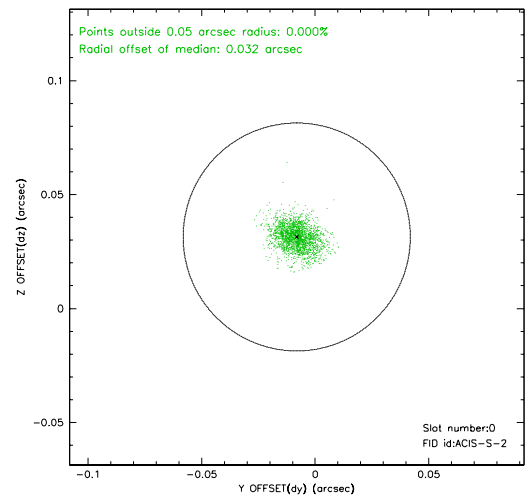
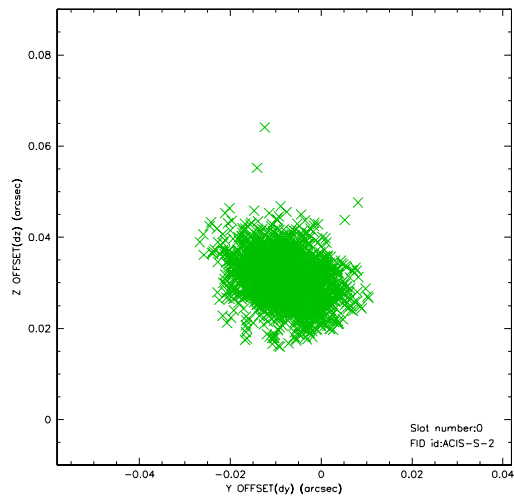


## 2.4.5 Slot 7

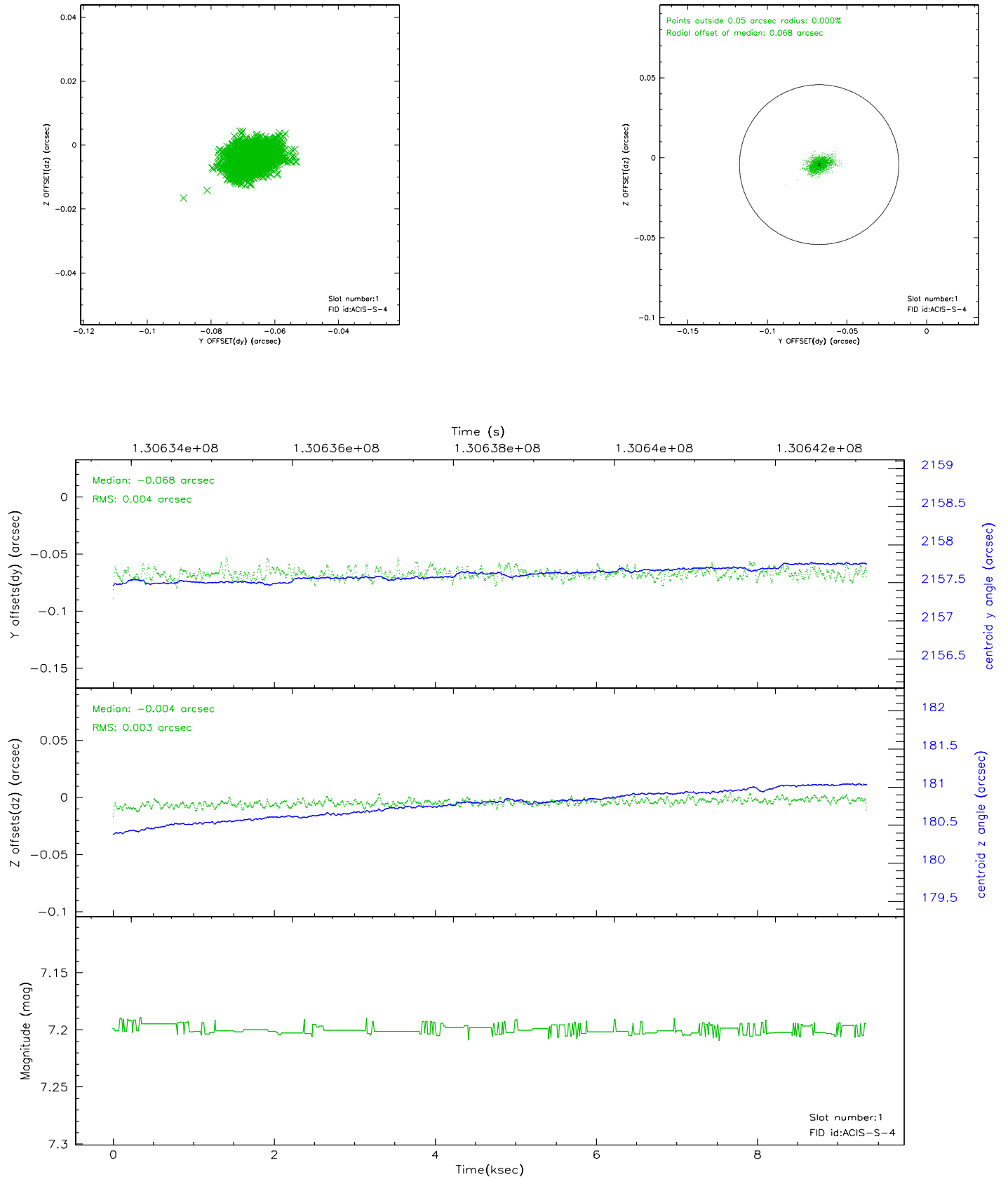


## 2.5 FID Slots

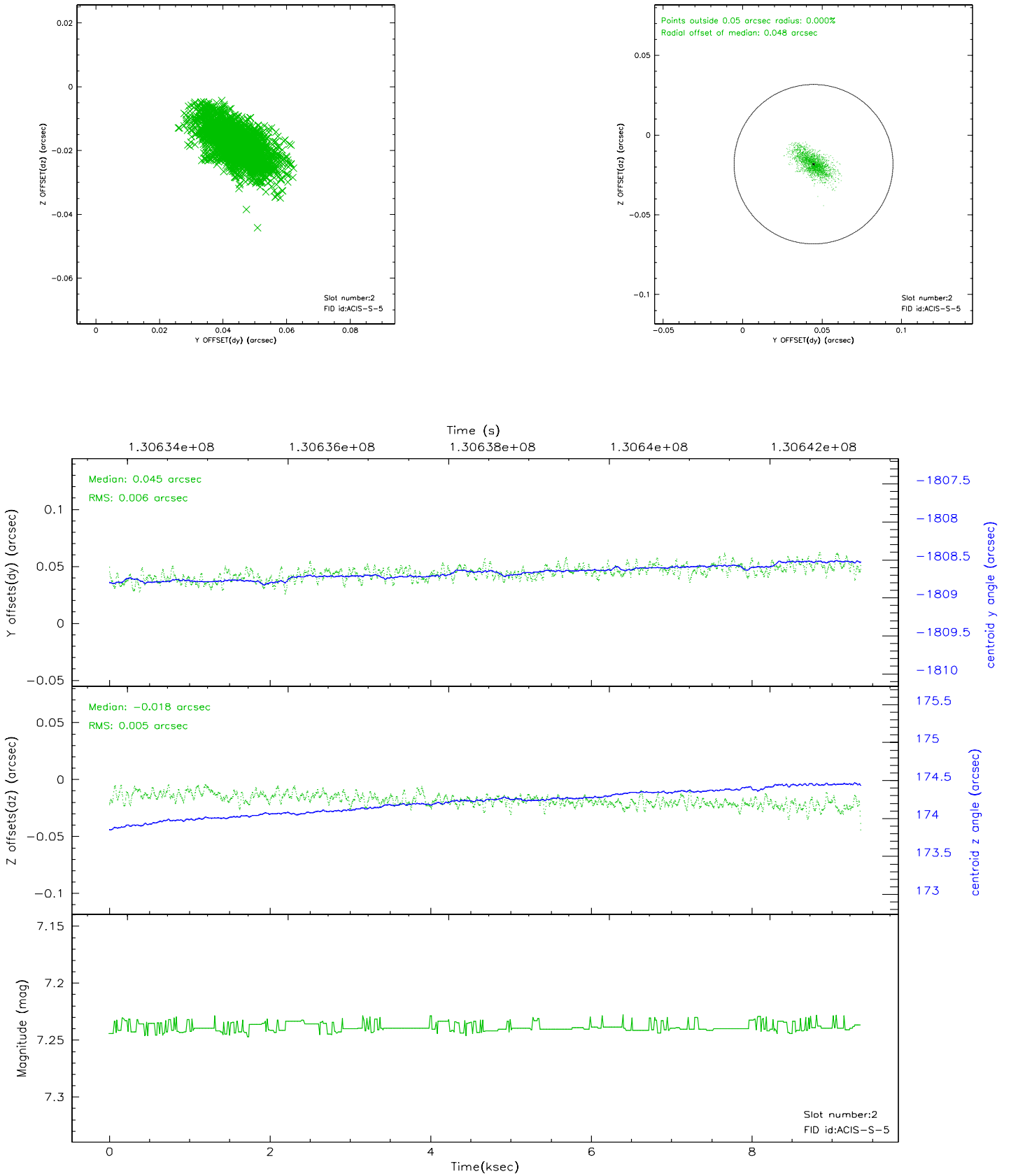
### 2.5.1 Slot 0



## 2.5.2 Slot 1

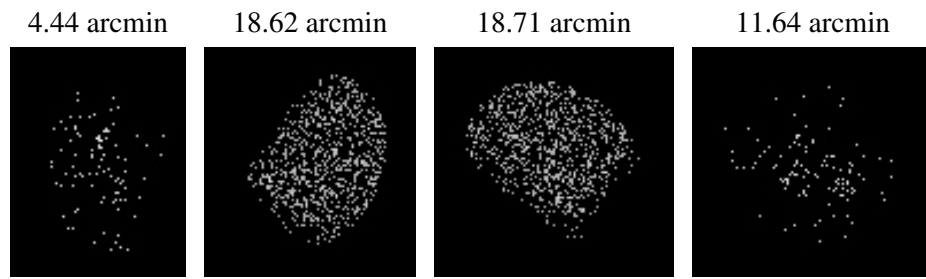


### 2.5.3 Slot 2





### 3 Point Sources



## A Summary

### A.1 Status

V&V Scientist	Beth Sundheim
V&V Date (YYYY-MM-DD)	2006.09.21
V&V Edition	1
V&V Disposition and Status	OK
V&V Charge Time	8.94

### A.2 Comments