

V&V Reference Report

L2 ASCDS Version : 8.4.5

Observation 3121 - L2 Version 3
Chandra X-Ray Center

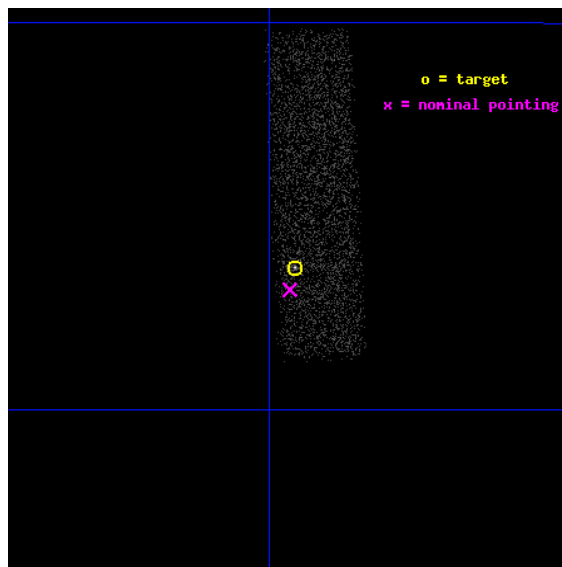
L2 Processing Date : Oct 10 2012

Contents

1	Front	2
2	OBI	3
2.1	OBI	3
2.1.1	Images	3
2.1.2	Bias	3
2.1.3	Parameters	4
2.1.4	Events	4
2.2	Compared Parameters	5
2.3	Aspect	6
2.4	Star Slots	9
2.4.1	Slot 3	9
2.4.2	Slot 4	10
2.4.3	Slot 5	11
2.4.4	Slot 6	12
2.4.5	Slot 7	13
2.5	FID Slots	14
2.5.1	Slot 0	14
2.5.2	Slot 1	15
2.5.3	Slot 2	16
A	Summary	17
A.1	Status	17
A.2	Comments	17

1 Front

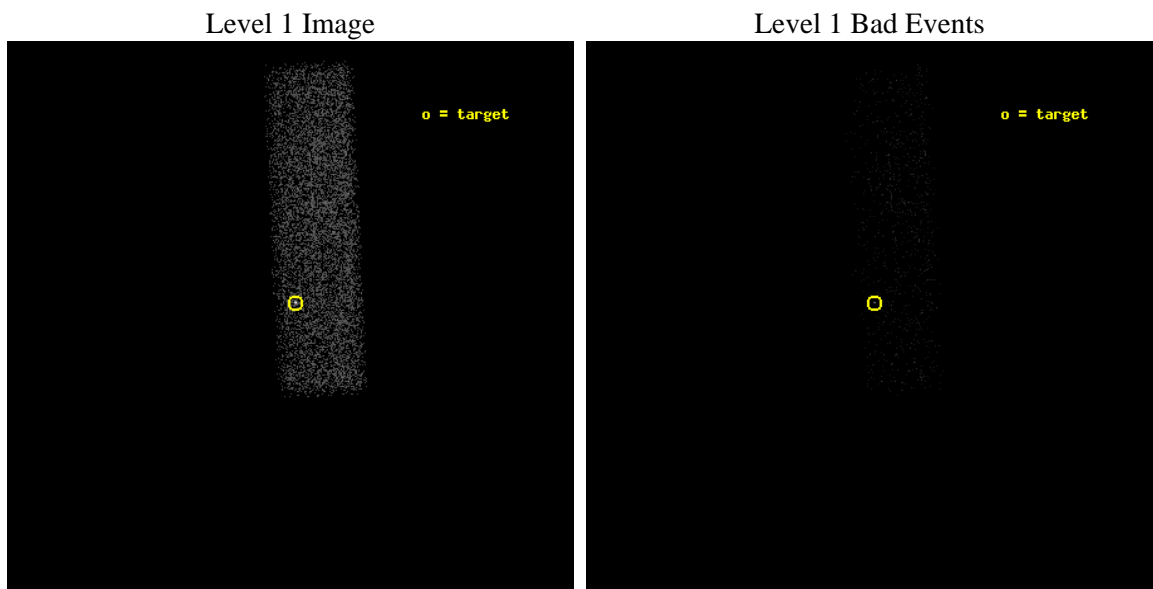
seq_num	700560	Sequence number
obs_id	3121	Observation id
title	A COMPLETE SURVEY FOR X-RAY EMISSION FROM RADIO JETS	Proposal titl
observer	Dr. Herman Marshall	Principal investigator
object	1424-418	Source name
dtcycle	0	
cycle	P	events from which exps? Prim/Second/Both
ra_targ	216.984583	Observer's specified target RA [deg]
dec_targ	-42.105389	Observer's specified target Dec [deg]
ra_nom	216.98771398751	Nominal RA [deg]
dec_nom	-42.115071372106	Nominal Dec [deg]
roll_nom	267.32097351249	Nominal Roll [deg]
revision	3	Processing version of data
ontime	4704.4312650263	Sum of GTIs [s]
livetime	4474.8704128473	Livetime [s]
ontime7	4704.4312650263	Sum of GTIs [s]
l2events	5622	Number of level 2 events



2 OBI

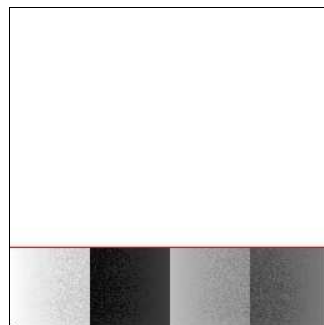
2.1 OBI

2.1.1 Images



2.1.2 Bias

Chip 7



2.1.3 Parameters

obi_num	0	Obi number	sched_exp_time	4850.000000	[s] Scheduled observation exposure time
ascdsver	8.4.5	Processing system revision	ontime	4704.4312650263	Sum of GTIs [s]
caldsver	4.5.2	 	ontime7	4704.4312650263	Sum of GTIs [s]
date	2012-10-10T03:53:57	Date and time of file creation	l1events	11589	Number of level 1 events
revision	3	Processing version of data			

2.1.4 Events

	ccd 7
level 1 events	11589
rejected events	5820
rejected %	50%

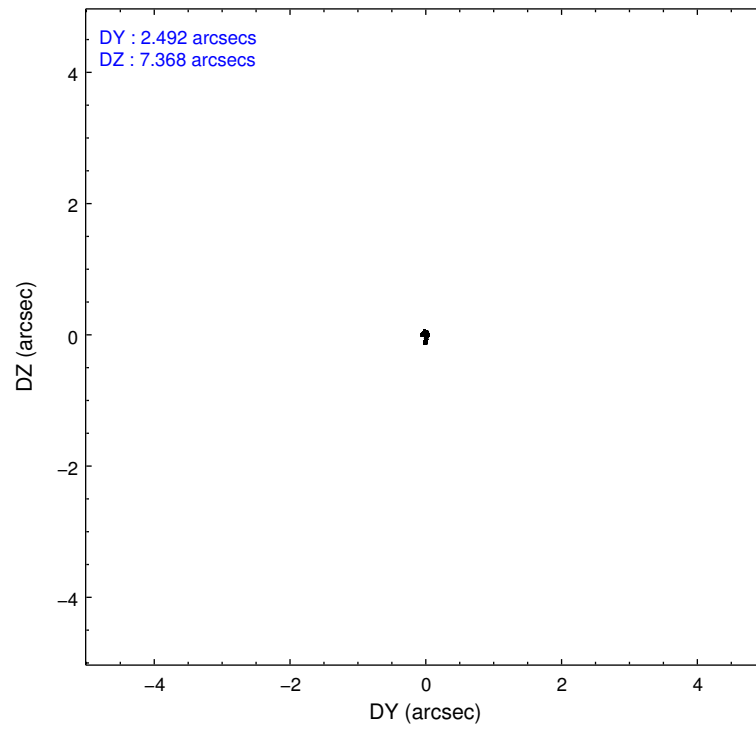
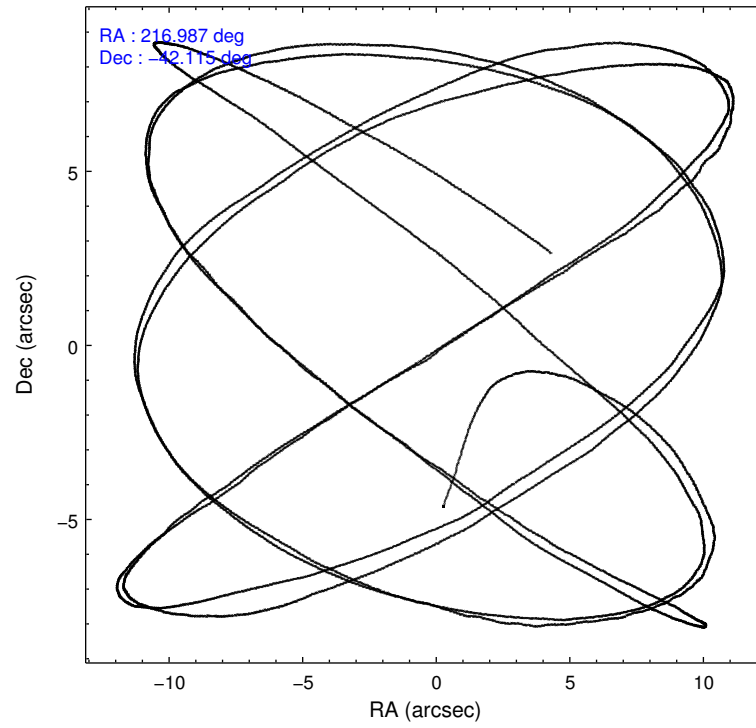
	ccd 7
grade 0 events	683
	5%
grade 1 events	15
	0%
grade 2 events	1273
	10%
grade 3 events	657
	5%
grade 4 events	664
	5%
grade 5 events	925
	7%
grade 6 events	2492
	21%
grade 7 events	4880
	42%

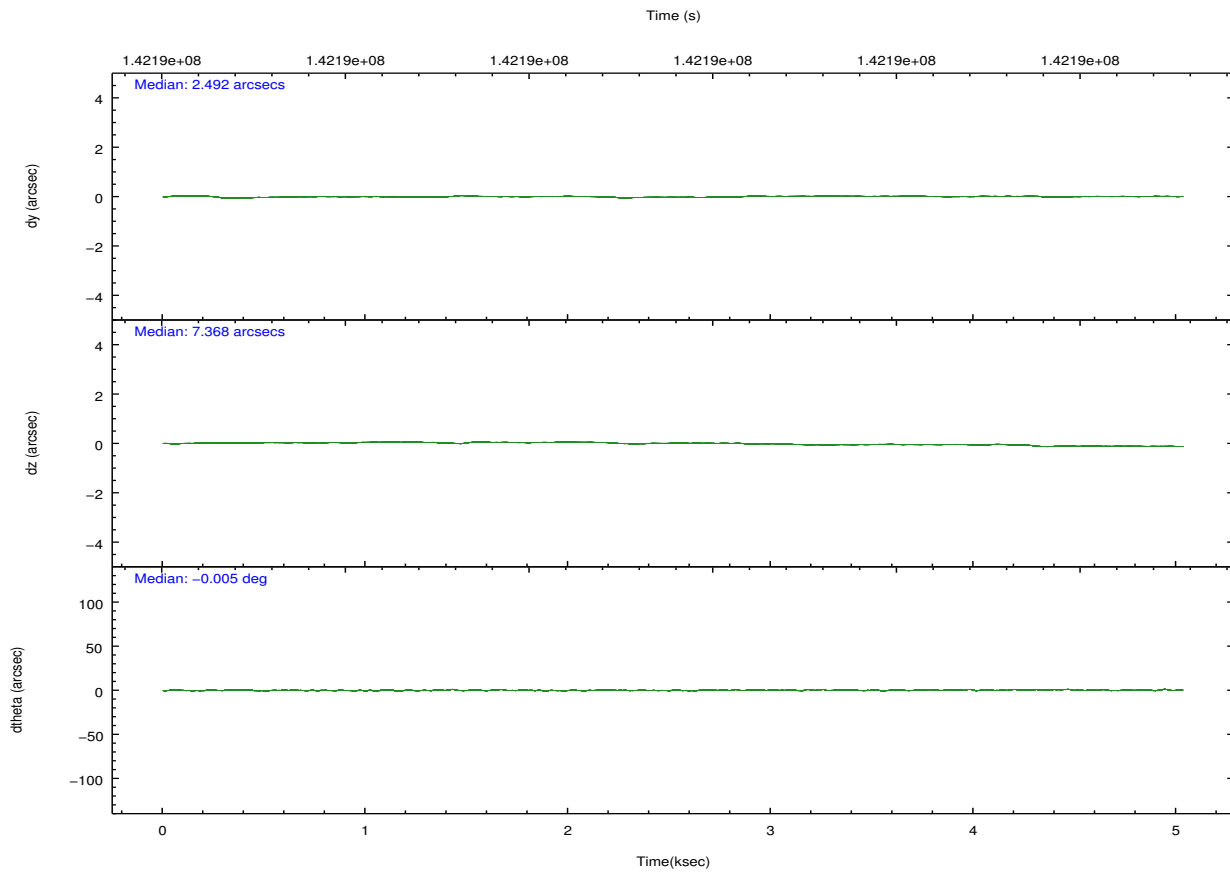
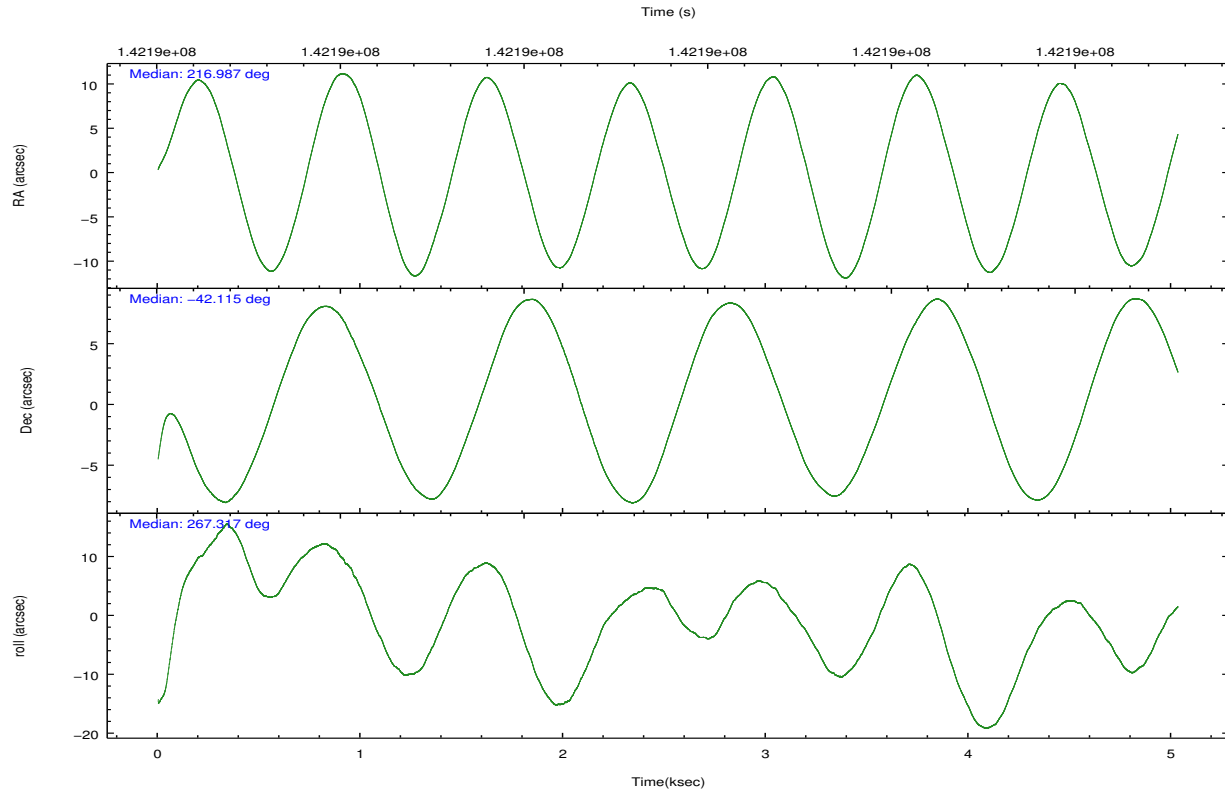
2.2 Compared Parameters

Parameter	Planned	Actual
Instrument	ACIS	ACIS
Detector	ACIS-7	ACIS-7
Grating	NONE	NONE
Data mode	FAINT	FAINT
Observation mode	POINTING	POINTING
[deg] Pointing RA	216.970397	216.9877139875081
[deg] Pointing Dec	-42.091013	-42.11507137210629
[deg] Pointing Roll	267.152767	267.3209735124861
[mm] SIM focus pos	-0.684267	-0.6828225247311905
[mm] SIM defocus	0	0.001444936568705701
[mm] SIM translation stage pos	-178.632523	-178.6395878605364
[mm] SIM translation stage offset	-11.5	-11.49293472247138
[s] Observation start time (MET)	142187451.184000	142186493.2845
Observation start date	2002-07-04T16:29:47	2002-07-04T16:14:53
[s] Observation end time (MET)	142192301.184000	142193003.57226
Observation end date	2002-07-04T17:50:37	2002-07-04T18:03:23
Read mode	TIMED	TIMED

Parameter	Planned	Actual
Obspar format version number	7	7
Obspar file type	PREDICTED	ACTUAL
Obspar update status	NONE	UPDATED
Number of optional ACIS chips dropped	0	0
On-chip summing requested	N	N
Subarray requested	CUSTOM	1/4
Subarray start row	1	1
Subarray row count	256	256
Alternating exposures requested	N	N
[s] Primary exposure time	0.000000	0.8

2.3 Aspect



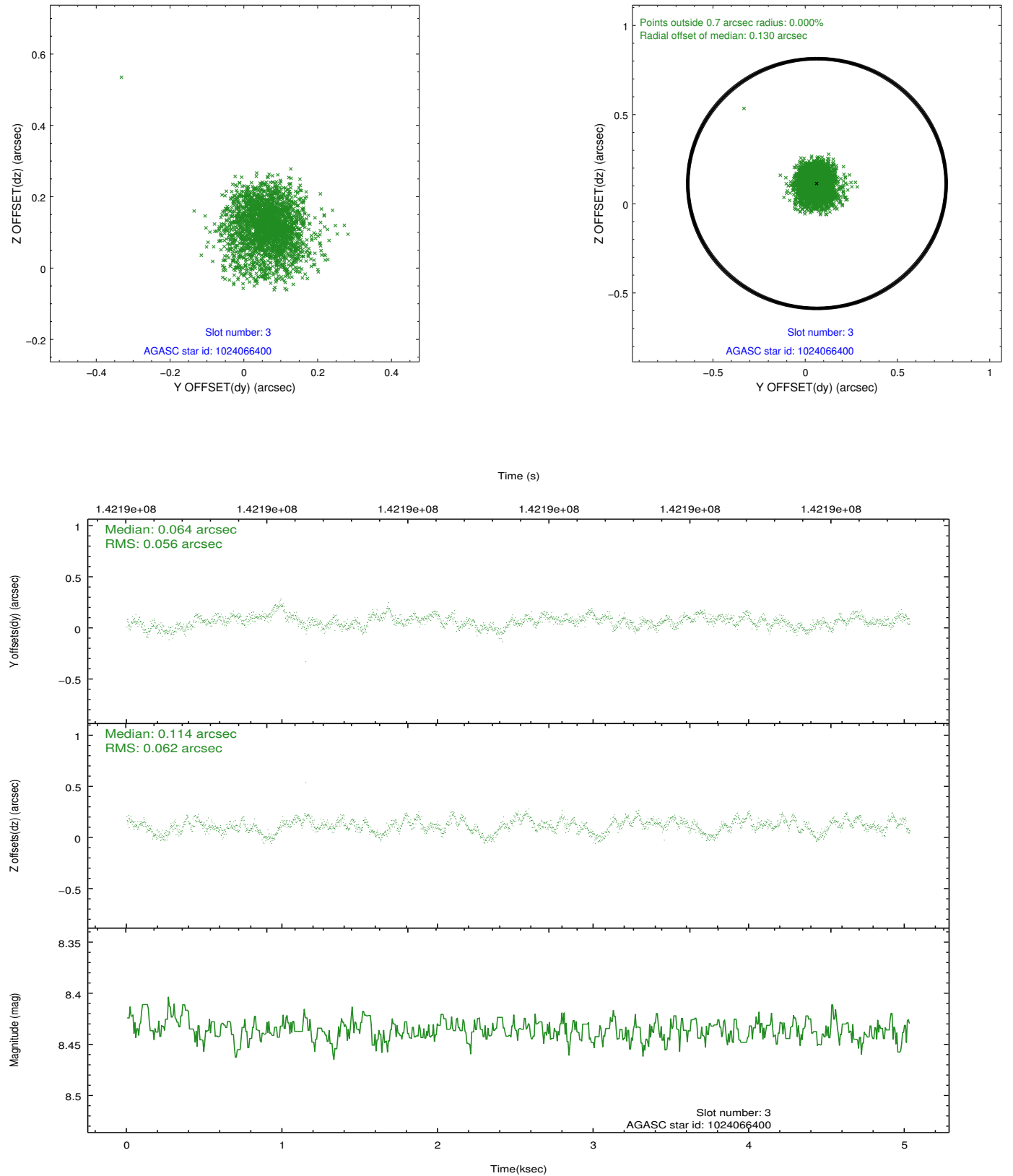


Slot Statistics

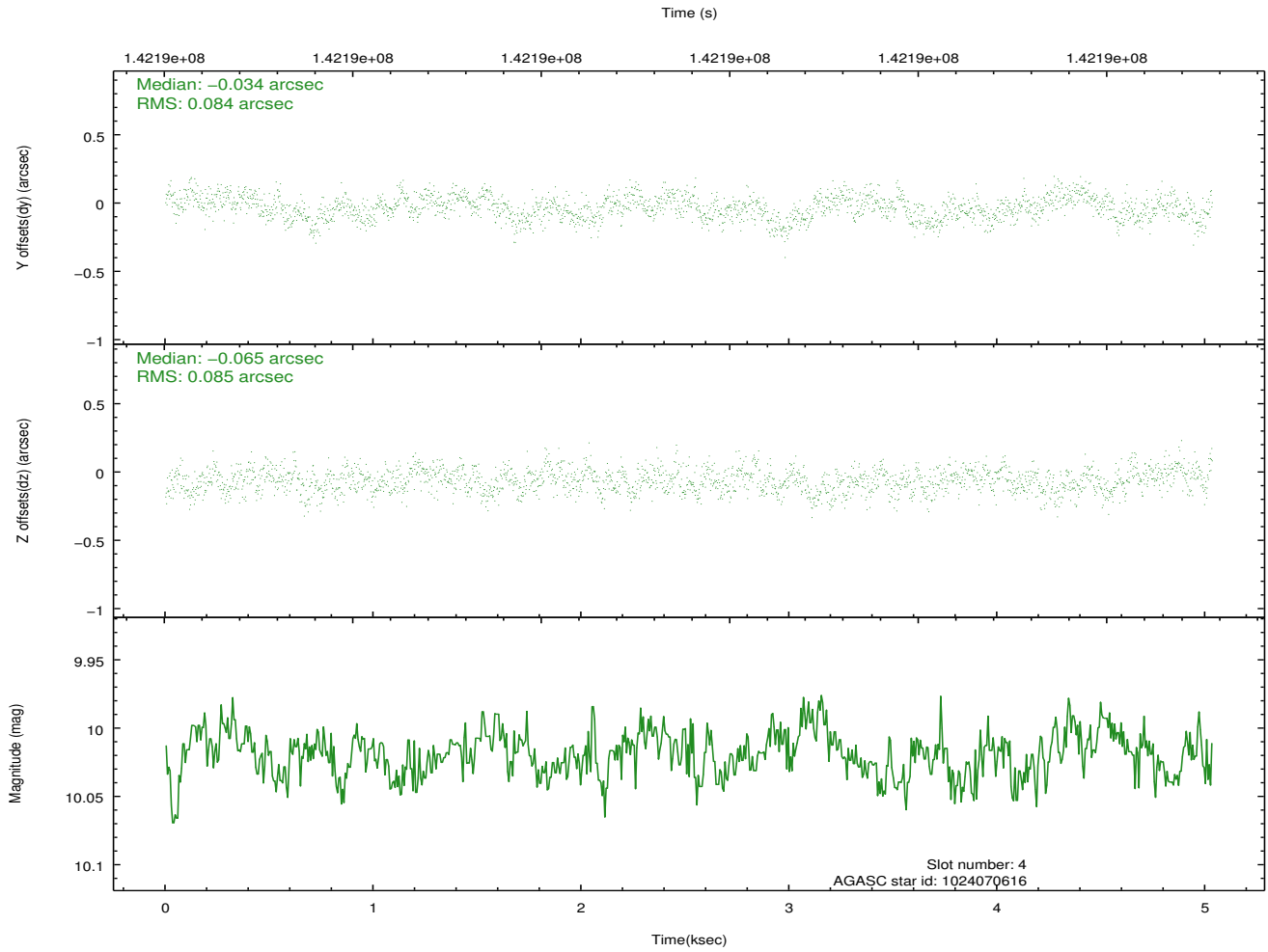
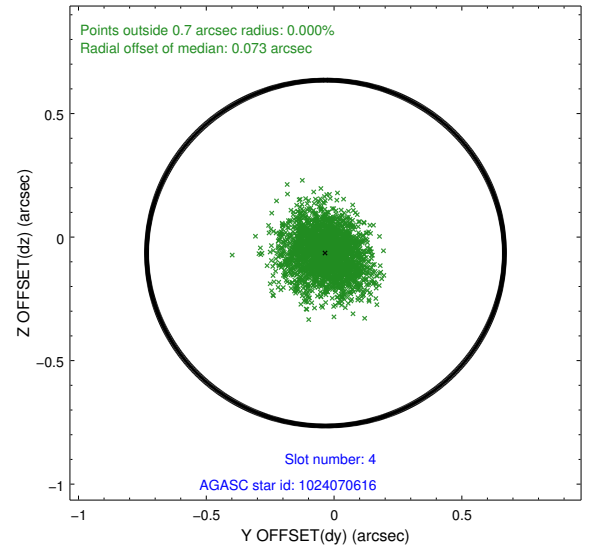
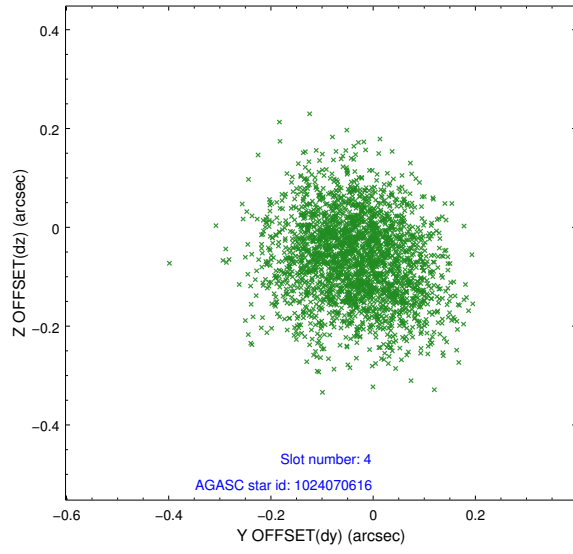
slot	status	id	mag	n_pts	med_dy	med_dz	dr1	dr2	ra	dec	mean_y	mean_z
0	FID	ACIS-S-2	7.08	1225	-0.079	-0.290	0.008	0.015	0.000000	0.000000	-754.31	-1965.42
1	FID	ACIS-S-4	7.17	1223	0.004	0.115	0.008	0.019	0.000000	0.000000	2158.47	-57.95
2	FID	ACIS-S-5	7.22	1226	0.043	0.182	0.007	0.013	0.000000	0.000000	-1805.50	-62.89
3	GUIDE	1024066400	8.44	2452	0.064	0.114	0.090	0.144	217.463660	-42.556265	1611.53	1391.15
4	GUIDE	1024070616	10.02	2454	-0.034	-0.065	0.128	0.205	216.223562	-42.147867	312.80	-1978.68
5	GUIDE	1024084280	10.19	2331	-0.018	-0.138	0.210	0.318	216.378485	-41.875864	-689.08	-1622.69
6	GUIDE	1024091968	9.65	2386	0.035	0.055	0.122	0.211	216.761165	-41.897524	-667.55	-593.99
7	GUIDE	1024083200	9.55	2452	-0.047	0.032	0.132	0.200	217.376090	-41.453728	-2343.69	980.23

2.4 Star Slots

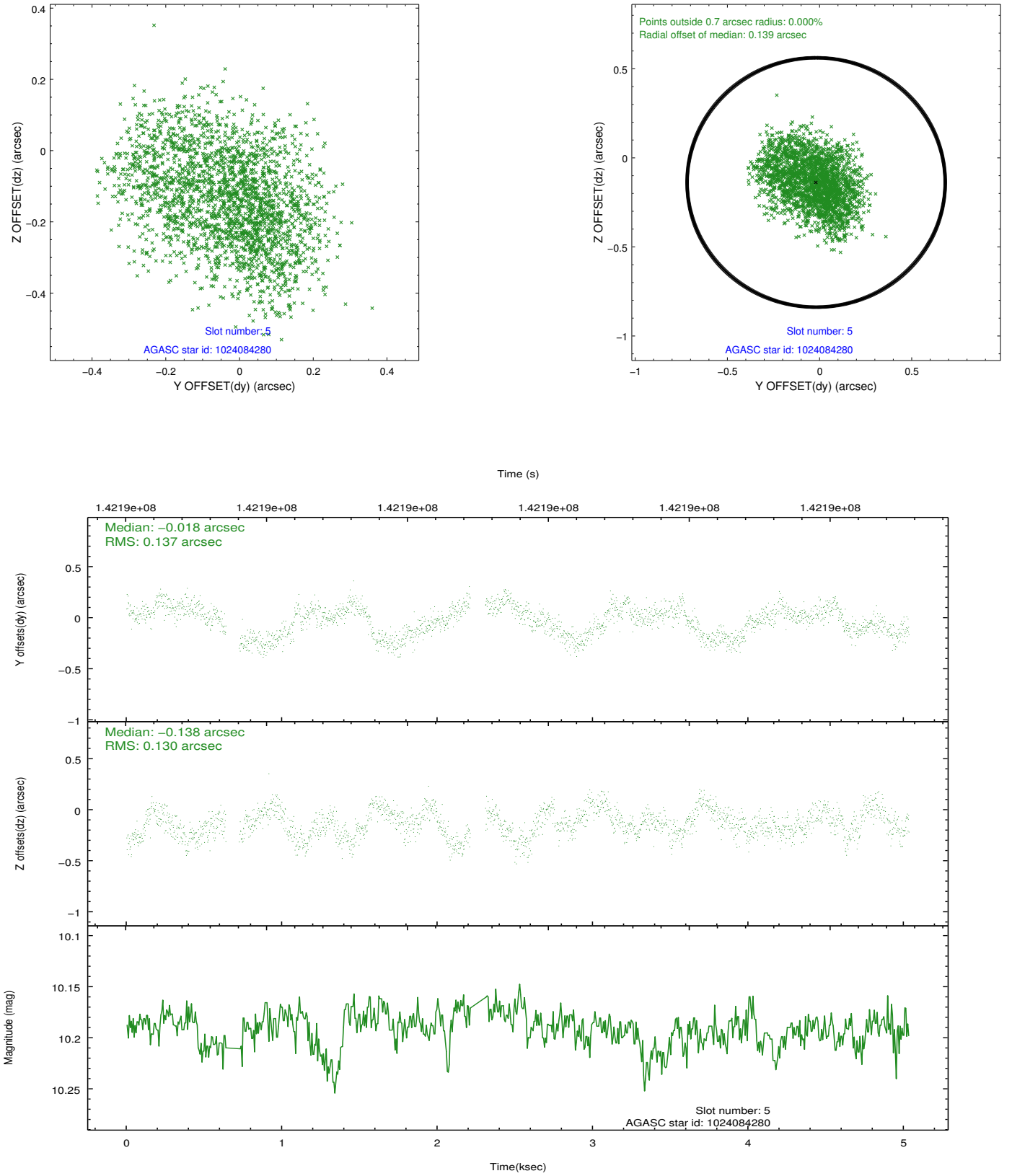
2.4.1 Slot 3



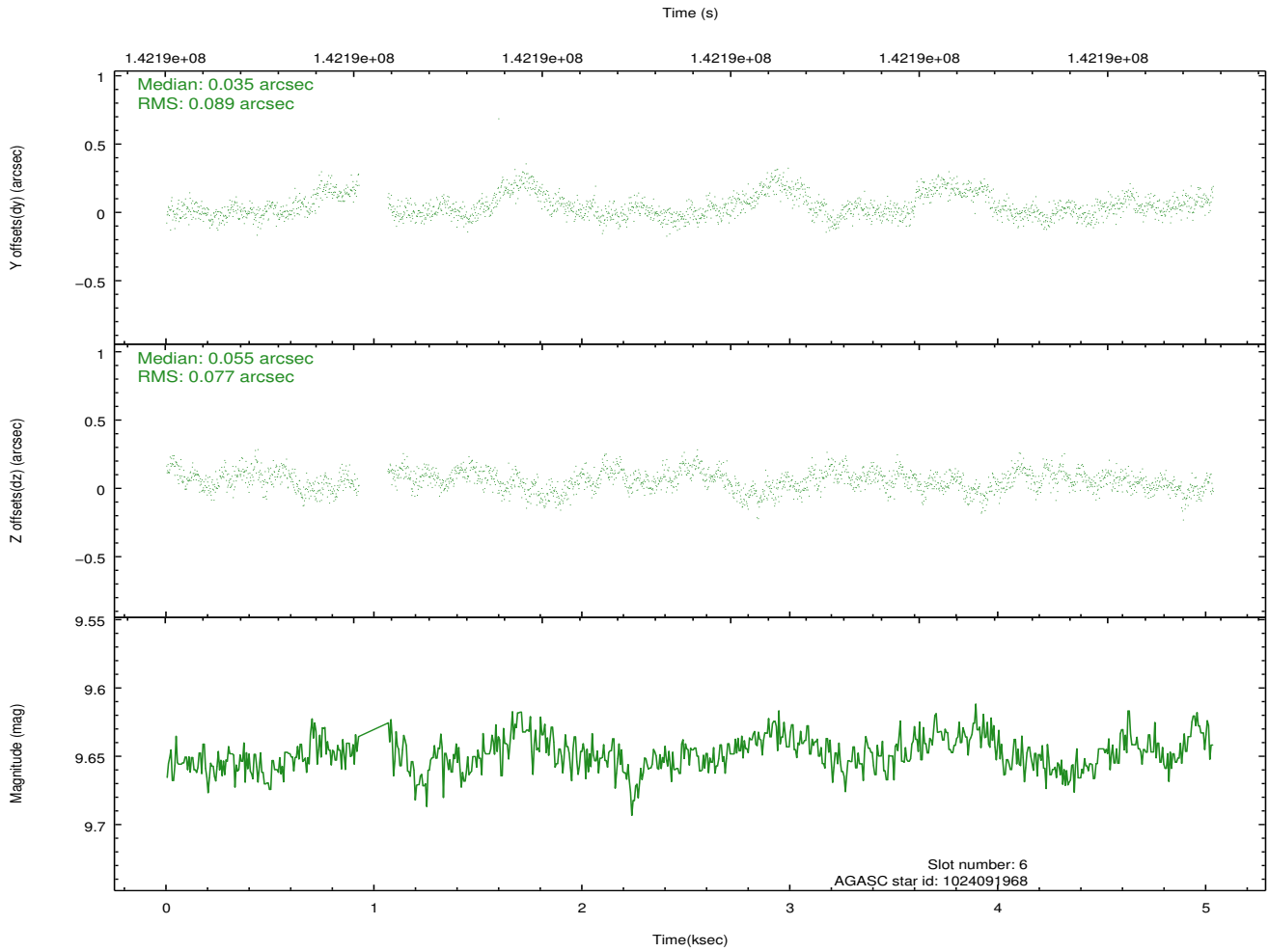
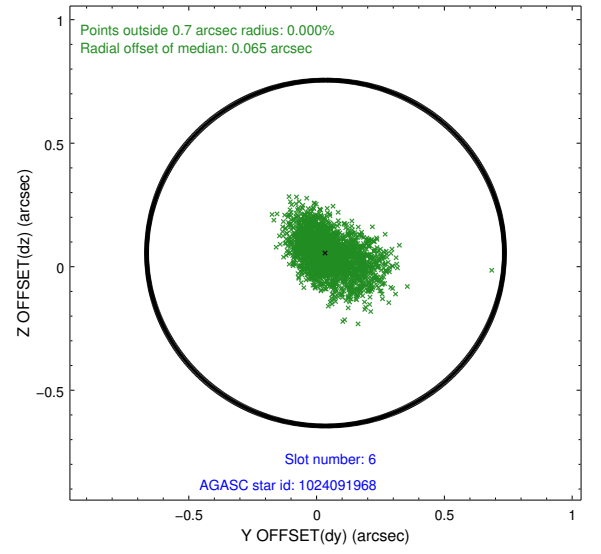
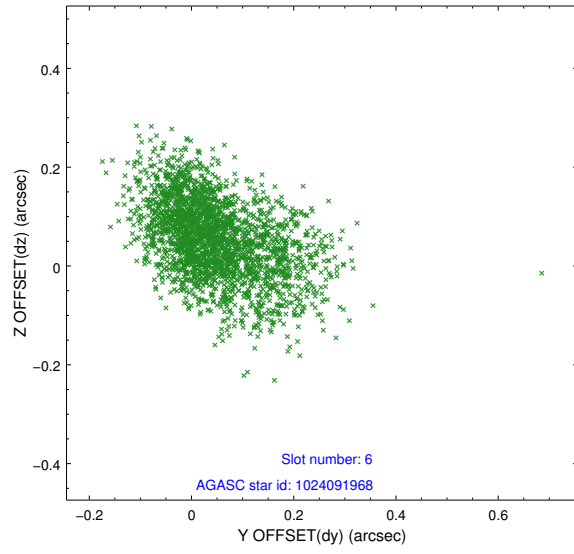
2.4.2 Slot 4



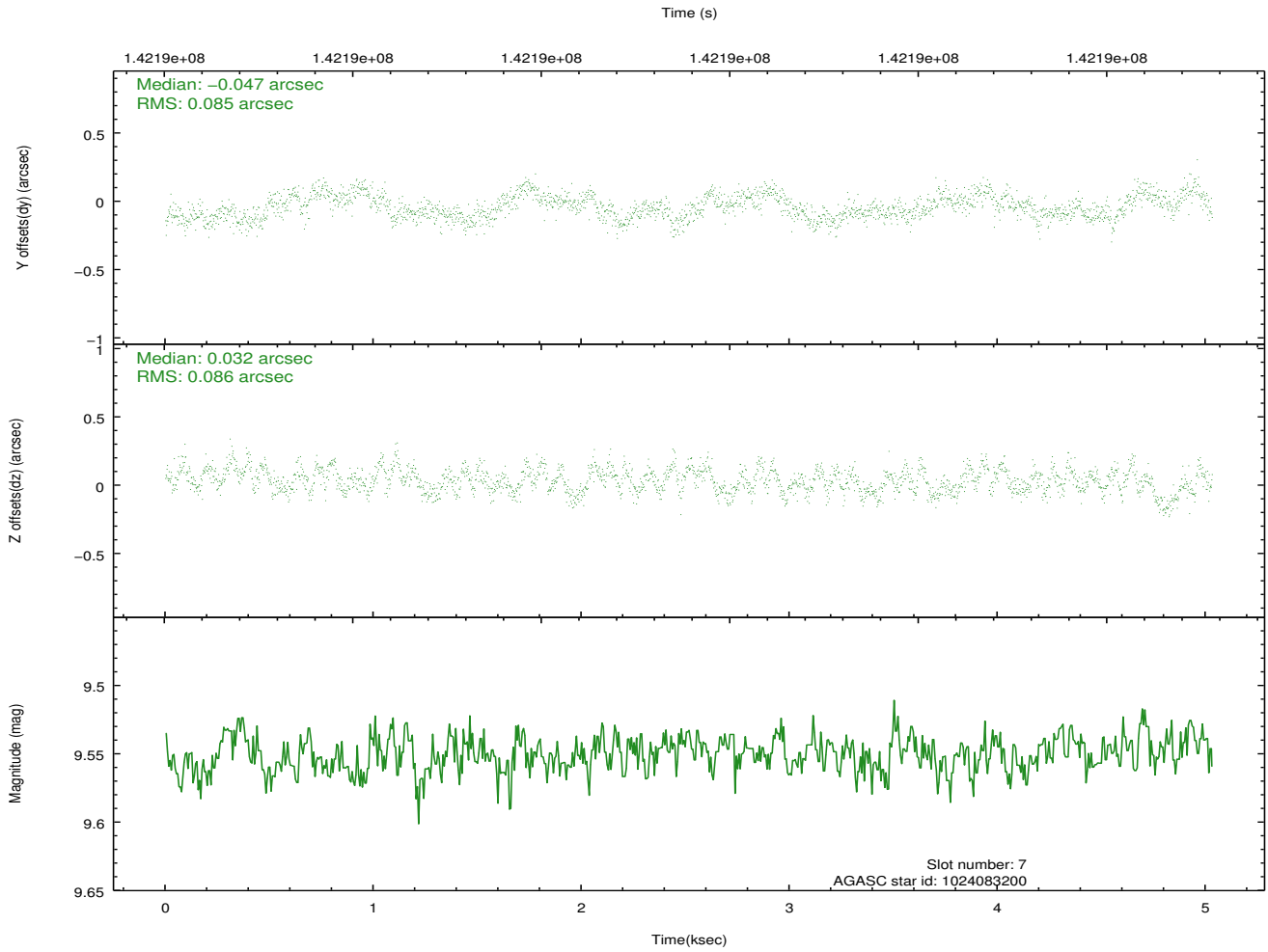
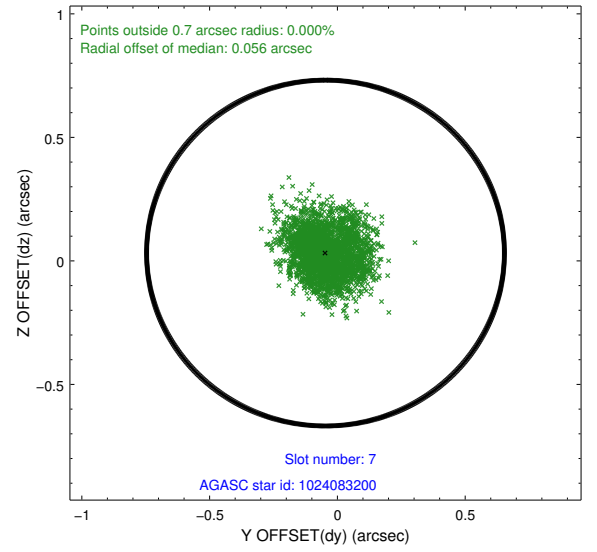
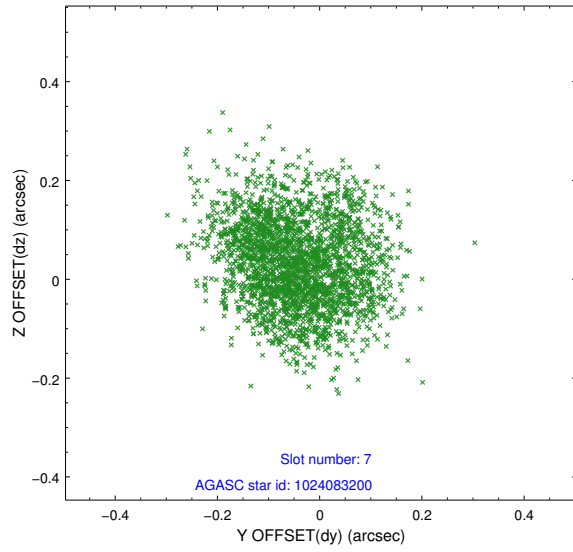
2.4.3 Slot 5



2.4.4 Slot 6

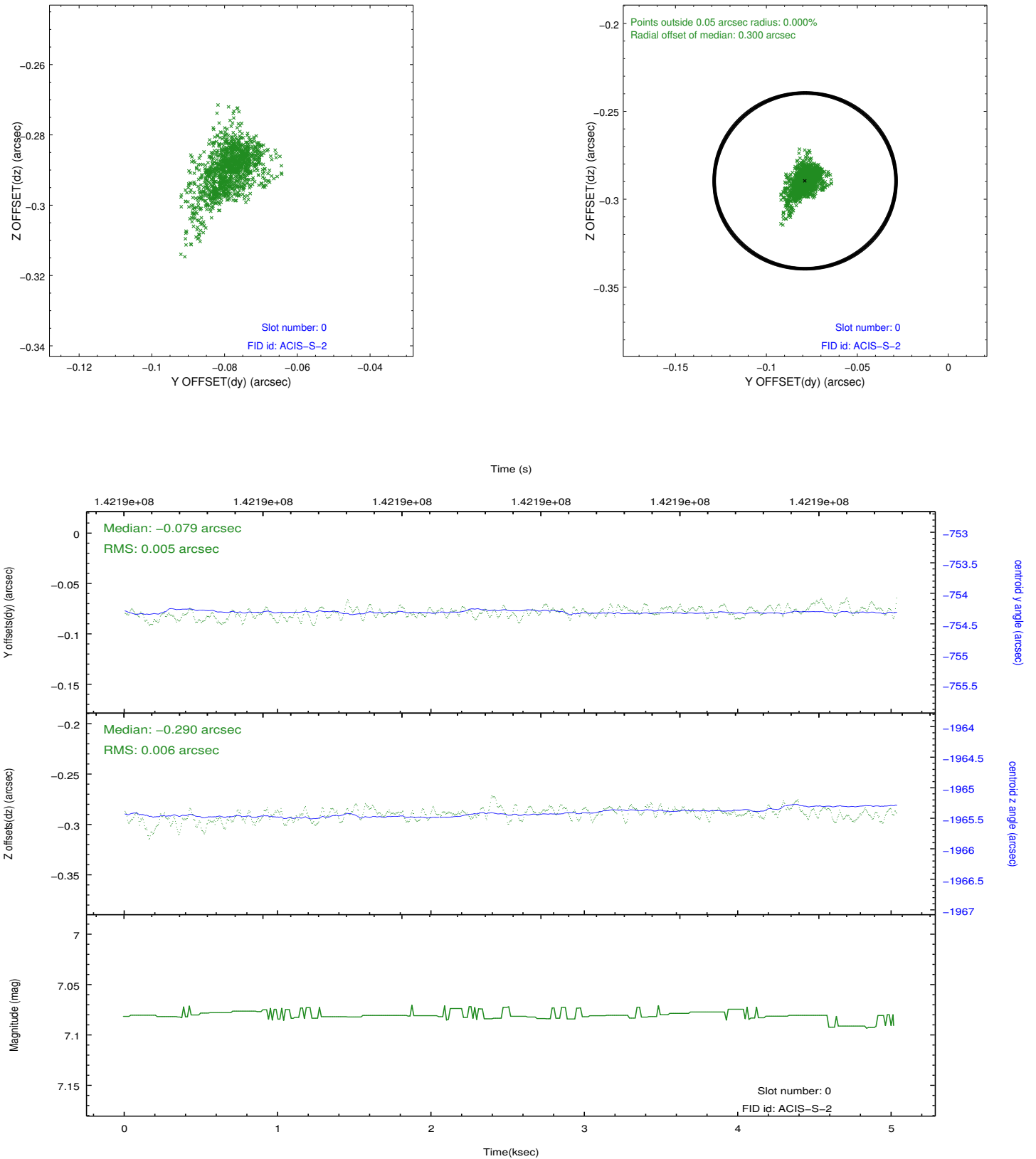


2.4.5 Slot 7

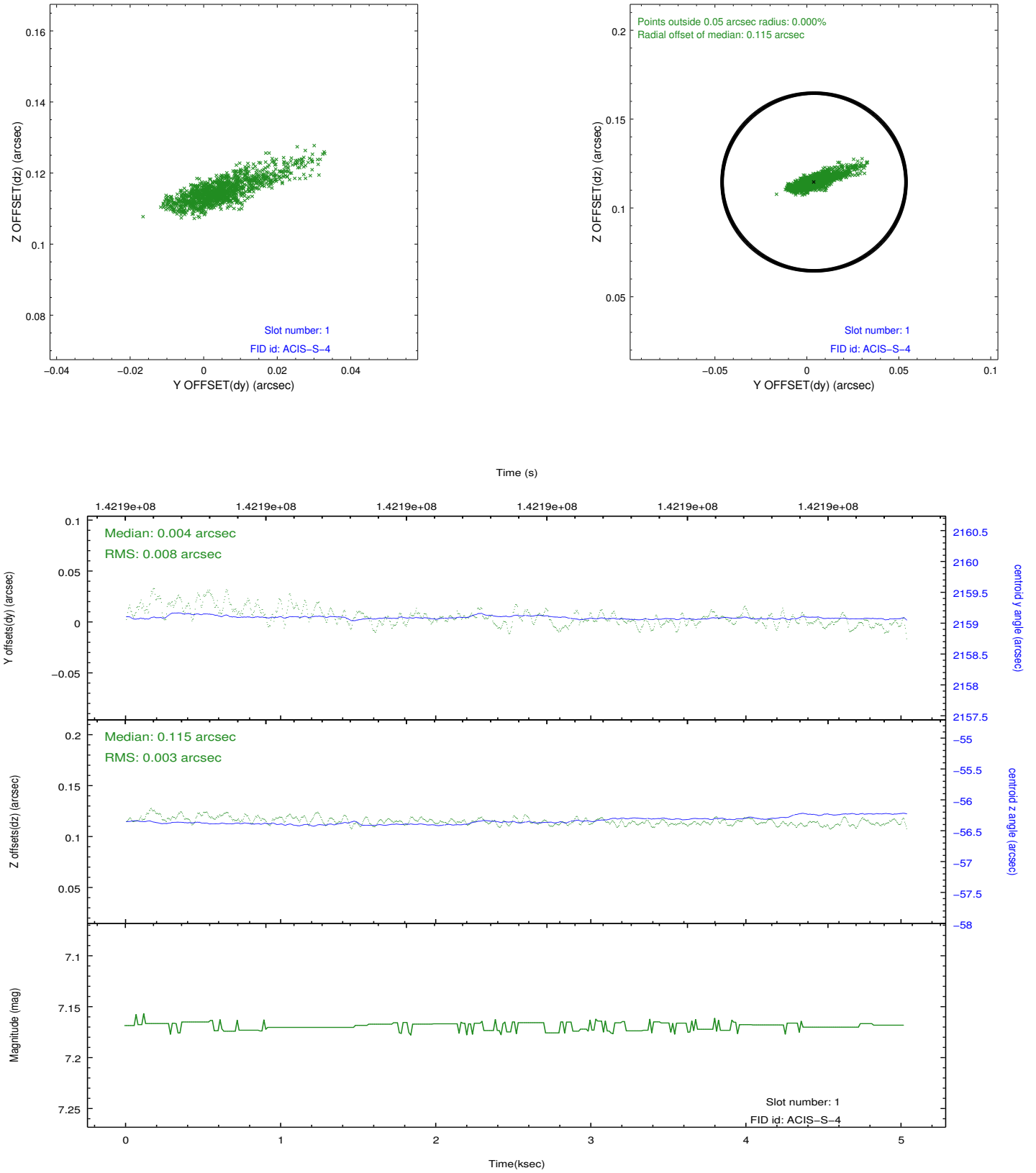


2.5 FID Slots

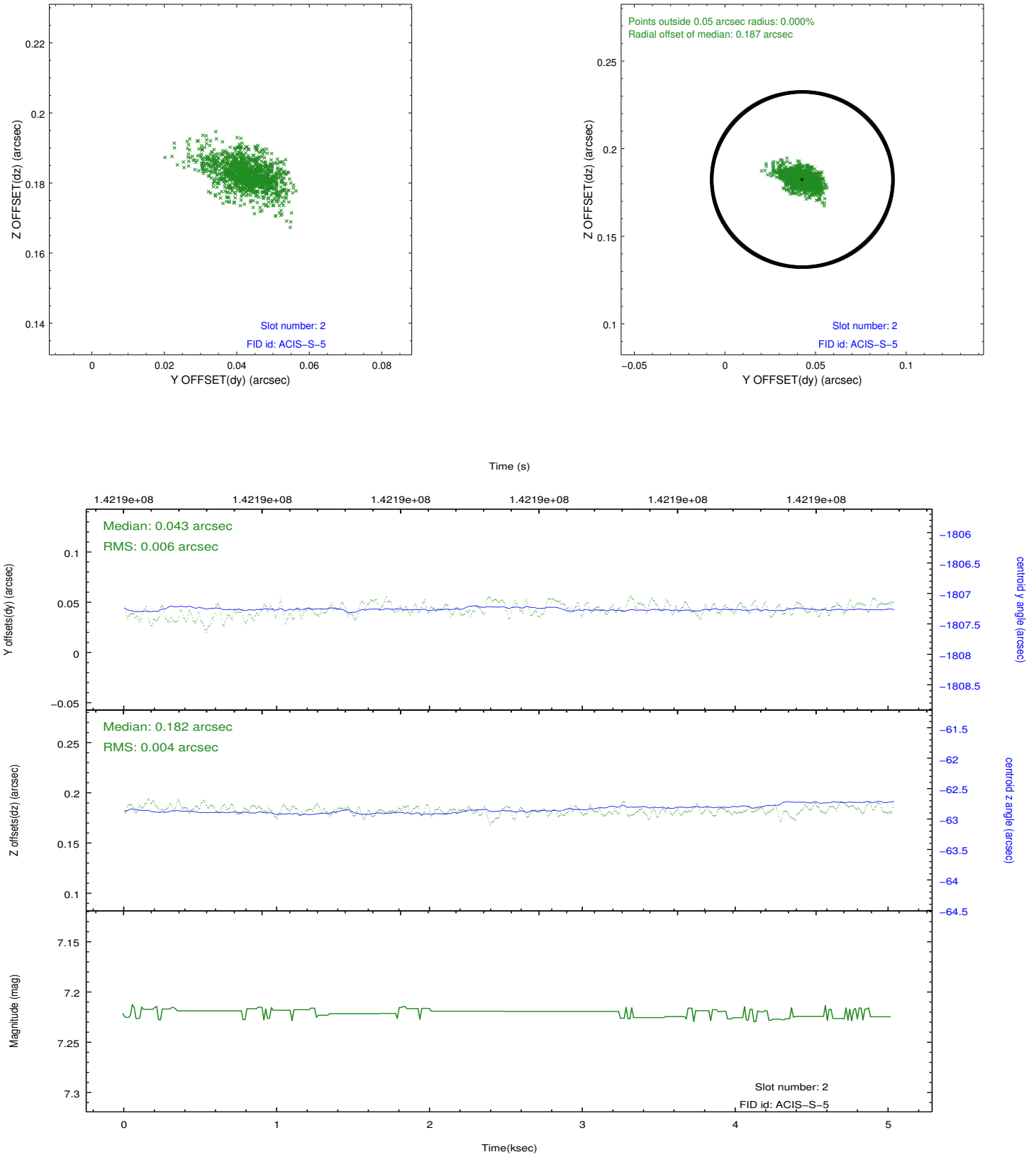
2.5.1 Slot 0



2.5.2 Slot 1



2.5.3 Slot 2



A Summary

A.1 Status

V&V Scientist	Jen Lauer
V&V Date (YYYY-MM-DD)	2012.10.19
V&V Edition	1
V&V Disposition and Status	OK
V&V Charge Time	4.704

A.2 Comments