

# V&V Reference Report

## L2 ASCDS Version : 7.6.9

Observation 3088 - L2 Version 001  
Chandra X-Ray Center

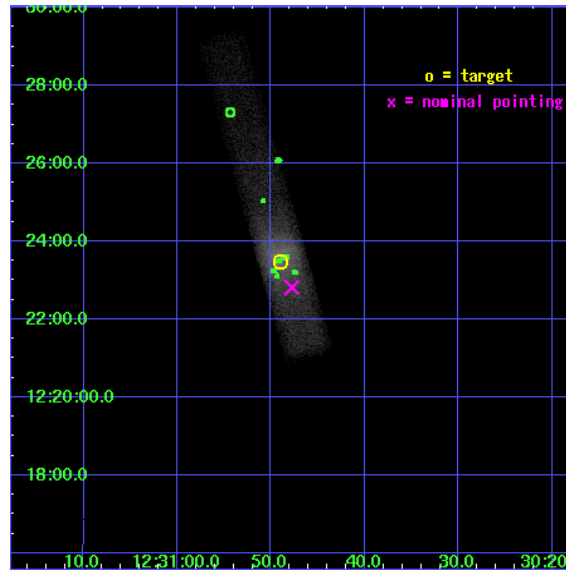
L2 Processing Date : Sep 26 2006

## Contents

<b>1</b>	<b>Front</b>	<b>2</b>
<b>2</b>	<b>OBI</b>	<b>3</b>
2.1	OBI . . . . .	3
2.1.1	Images . . . . .	3
2.1.2	Bias . . . . .	3
2.1.3	Parameters . . . . .	4
2.1.4	Events . . . . .	4
2.2	Compared Parameters . . . . .	5
2.3	Aspect . . . . .	6
2.4	Star Slots . . . . .	9
2.4.1	Slot 3 . . . . .	9
2.4.2	Slot 4 . . . . .	10
2.4.3	Slot 5 . . . . .	11
2.4.4	Slot 6 . . . . .	12
2.4.5	Slot 7 . . . . .	13
2.5	FID Slots . . . . .	14
2.5.1	Slot 0 . . . . .	14
2.5.2	Slot 1 . . . . .	15
2.5.3	Slot 2 . . . . .	16
<b>3</b>	<b>Point Sources</b>	<b>17</b>
<b>A</b>	<b>Summary</b>	<b>18</b>
A.1	Status . . . . .	18
A.2	Comments . . . . .	18

# 1 Front

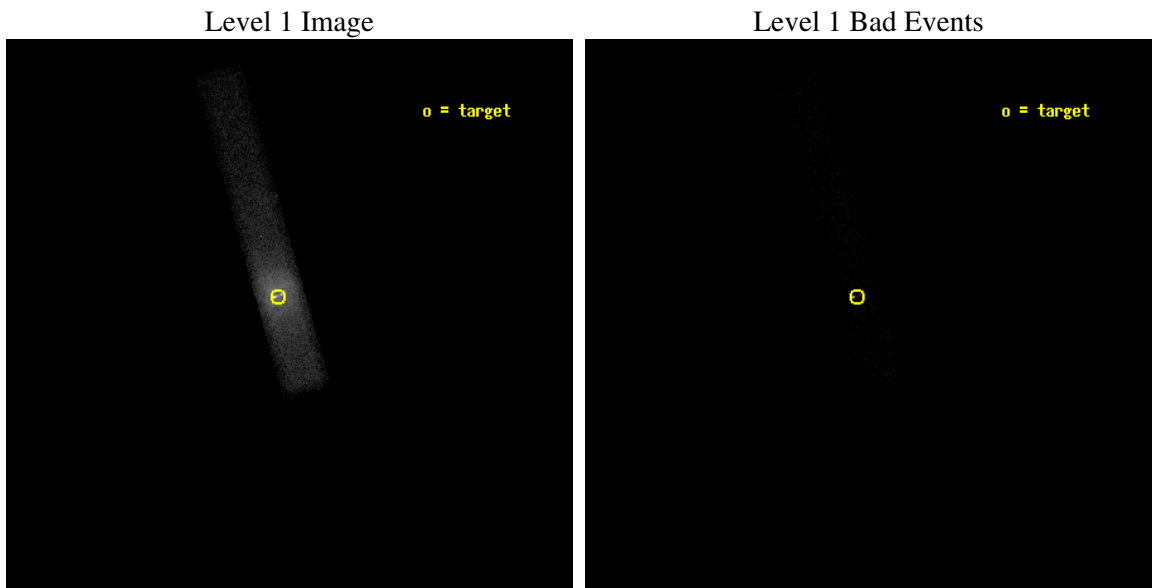
seq_num	700527
obs_id	3088
title	X-RAY VARIABILITY IN THE JET AND CORE OF M87
observer	Dr. Daniel Harris
object	M87
dtcycle	0
cycle	P
ra_targ	187.704167
dec_targ	12.391667
ra_nom	187.69914163405
dec_nom	12.380271172994
roll_nom	254.15833819924
revision	2
ontime	5191.5590373576
liveltime	4708.4700139285
ontime7	5191.5590373576
l2events	58748



## 2 OBI

### 2.1 OBI

#### 2.1.1 Images



#### 2.1.2 Bias

Chip 7



### 2.1.3 Parameters

obi_num	0
ascdsver	7.6.9
caldbver	3.2.3
date	2006-09-26T10:26:44
revision	2

sched_exp_time	5000.000000
ontime	6795.900249362
ontime7	6795.900249362
l1events	73686

### 2.1.4 Events

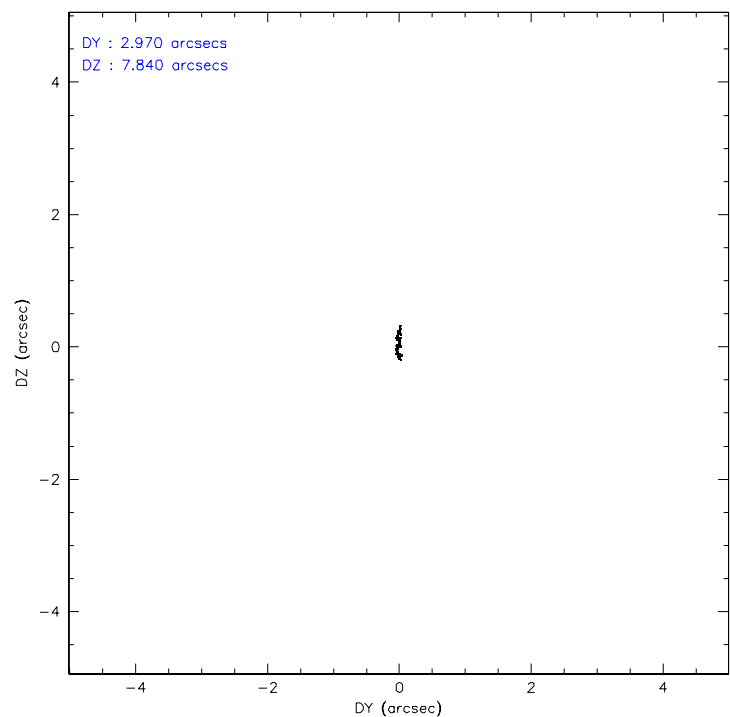
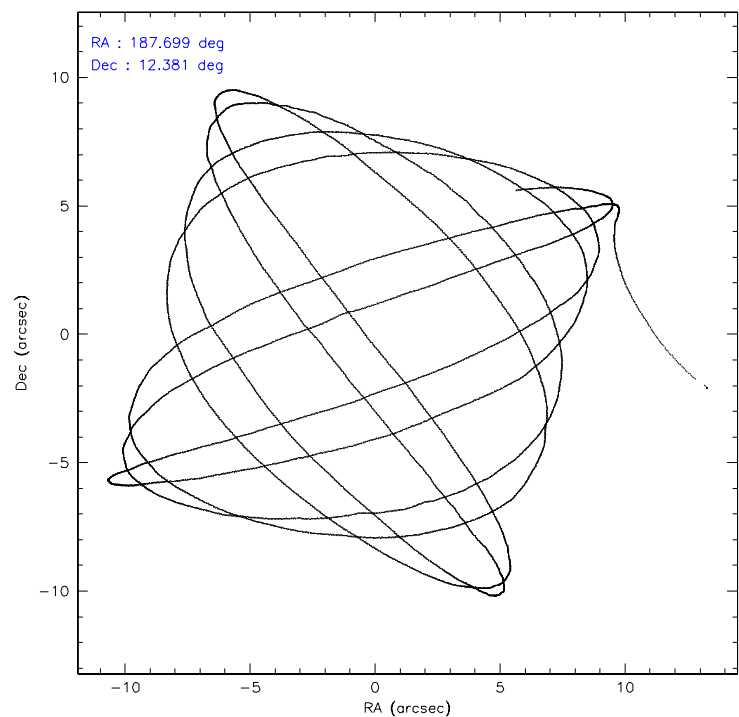
	<b>ccd 7</b>
level 1 events	73686
rejected events	14382
rejected %	19%

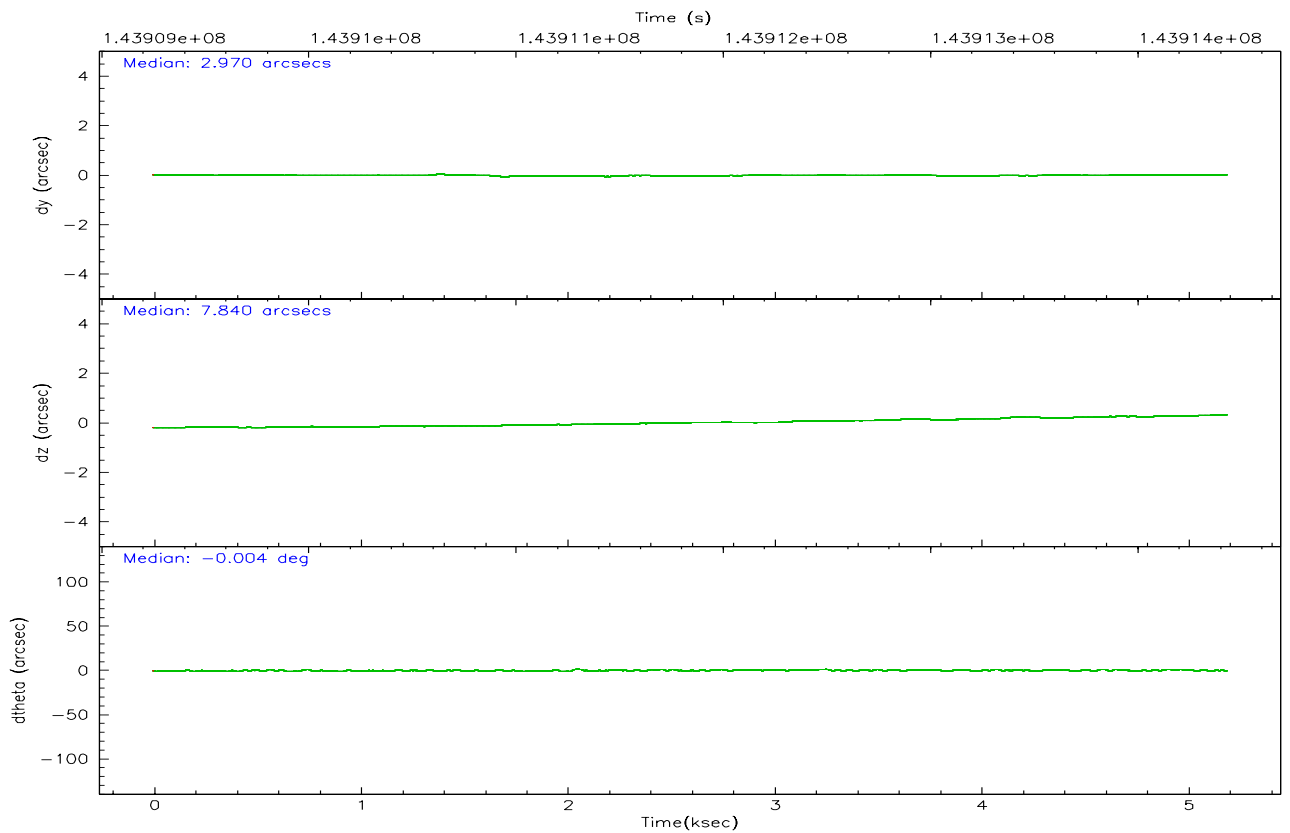
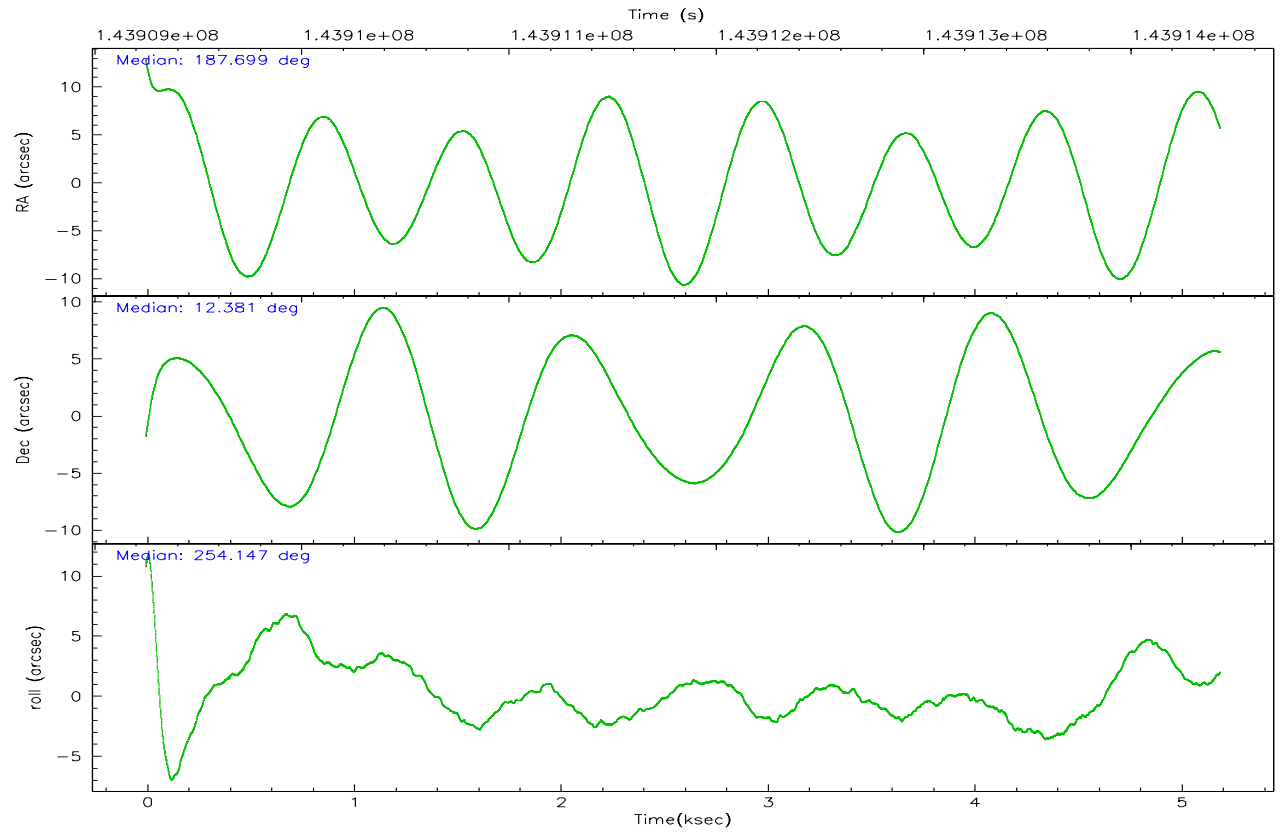
	<b>ccd 7</b>
grade 0 events	20588
	27%
grade 1 events	129
	0%
grade 2 events	18367
	24%
grade 3 events	7534
	10%
grade 4 events	7281
	9%
grade 5 events	1152
	1%
grade 6 events	14446
	19%
grade 7 events	4189
	5%

## 2.2 Compared Parameters

Parameter	Planned	Actual	Parameter	Planned	Actual
Instrument	ACIS	ACIS	Obspar format version number	6	6
Detector	ACIS-7	ACIS-7	Obspar file type	PREDICTED	ACTUAL
Grating	NONE	NONE	Obspar update status	NONE	UPDATED
Data mode	FAINT	FAINT	Number of optional ACIS chips dropped	0	0
Observation mode	POINTING	POINTING	On-chip summing requested	N	N
Pointing RA	187.691851	187.6991416340508	Subarray requested	1/8	1/8
Pointing Dec	12.406560	12.38027117299403	Subarray start row	0	449
Pointing Roll	254.003241	254.1583381992438	Subarray row count	1024	128
SIM focus pos (mm)	-0.684267	-0.6828225247311905	Alternating exposures requested	N	N
SIM defocus (mm)	0	0.001444936568705701	Primary exposure time	0.000000	0.4
SIM translation stage pos (mm)	-190.132523	-190.1400660498719			
SIM translation stage offset (mm)	0	0.00754346686406393			
Observation start time	143909434.184000	143907638.50518			
Observation start date	2002-07-24T14:49:30	2002-07-24T14:20:38			
Observation end time	143914434.184000	143915277.318			
Observation end date	2002-07-24T16:12:50	2002-07-24T16:27:57			
Read mode	TIMED	TIMED			

## 2.3 Aspect



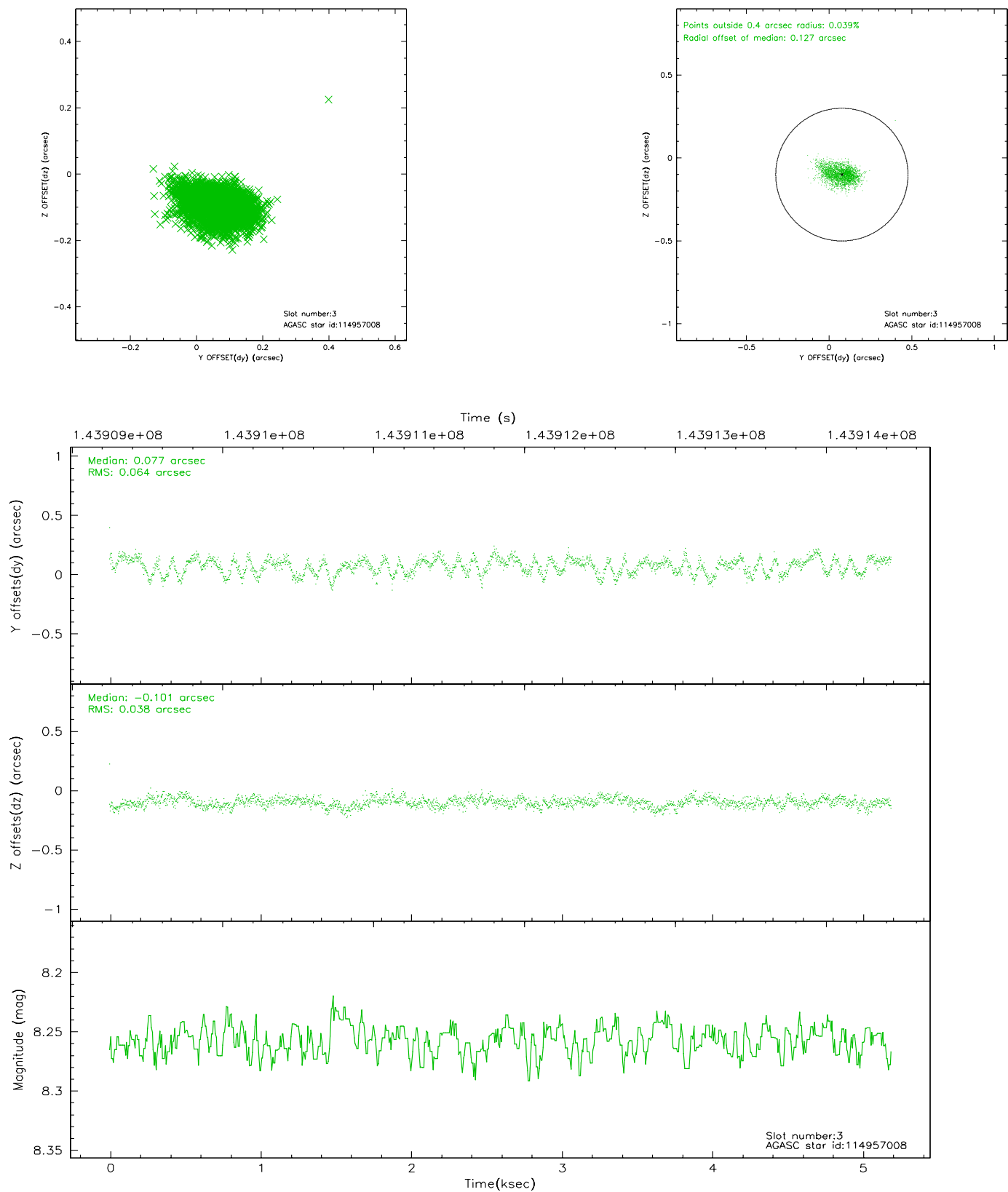


### Slot Statistics

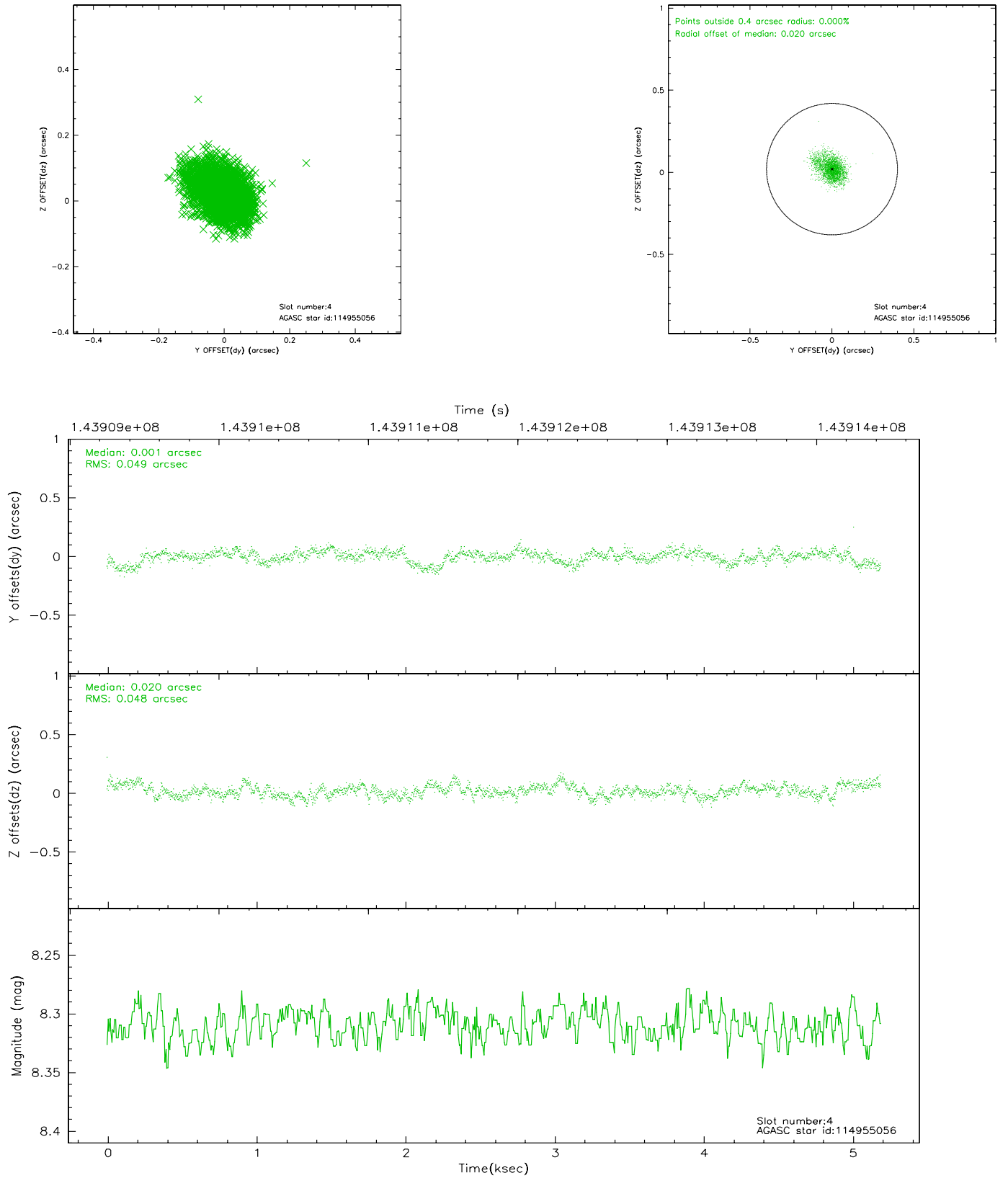
slot	status	id	mag	n_pts	med_dy	med_dz	dr1	dr2	ra	dec	mean_y	mean_z
0	FID	ACIS-S-2	7.11	1266	0.004	0.023	0.007	0.011	0.000000	0.000000	-755.61	-1729.01
1	FID	ACIS-S-4	7.20	1266	-0.061	-0.008	0.005	0.009	0.000000	0.000000	2157.09	178.21
2	FID	ACIS-S-5	7.24	1267	0.025	-0.006	0.006	0.011	0.000000	0.000000	-1806.92	173.24
3	GUIDE	114957008	8.26	2534	0.077	-0.101	0.077	0.131	186.894794	12.099160	1835.10	-2394.12
4	GUIDE	114955056	8.31	2534	0.001	0.020	0.073	0.123	187.914001	12.127854	750.68	1026.27
5	GUIDE	114954440	9.21	2533	0.006	-0.032	0.095	0.153	186.915066	12.219118	1400.31	-2442.48
6	GUIDE	114952424	9.33	2527	0.033	0.141	0.087	0.146	187.477948	11.953762	1776.53	-276.82
7	GUIDE	114952792	9.50	2527	-0.108	-0.031	0.103	0.165	187.070263	12.344747	816.50	-2041.85

## 2.4 Star Slots

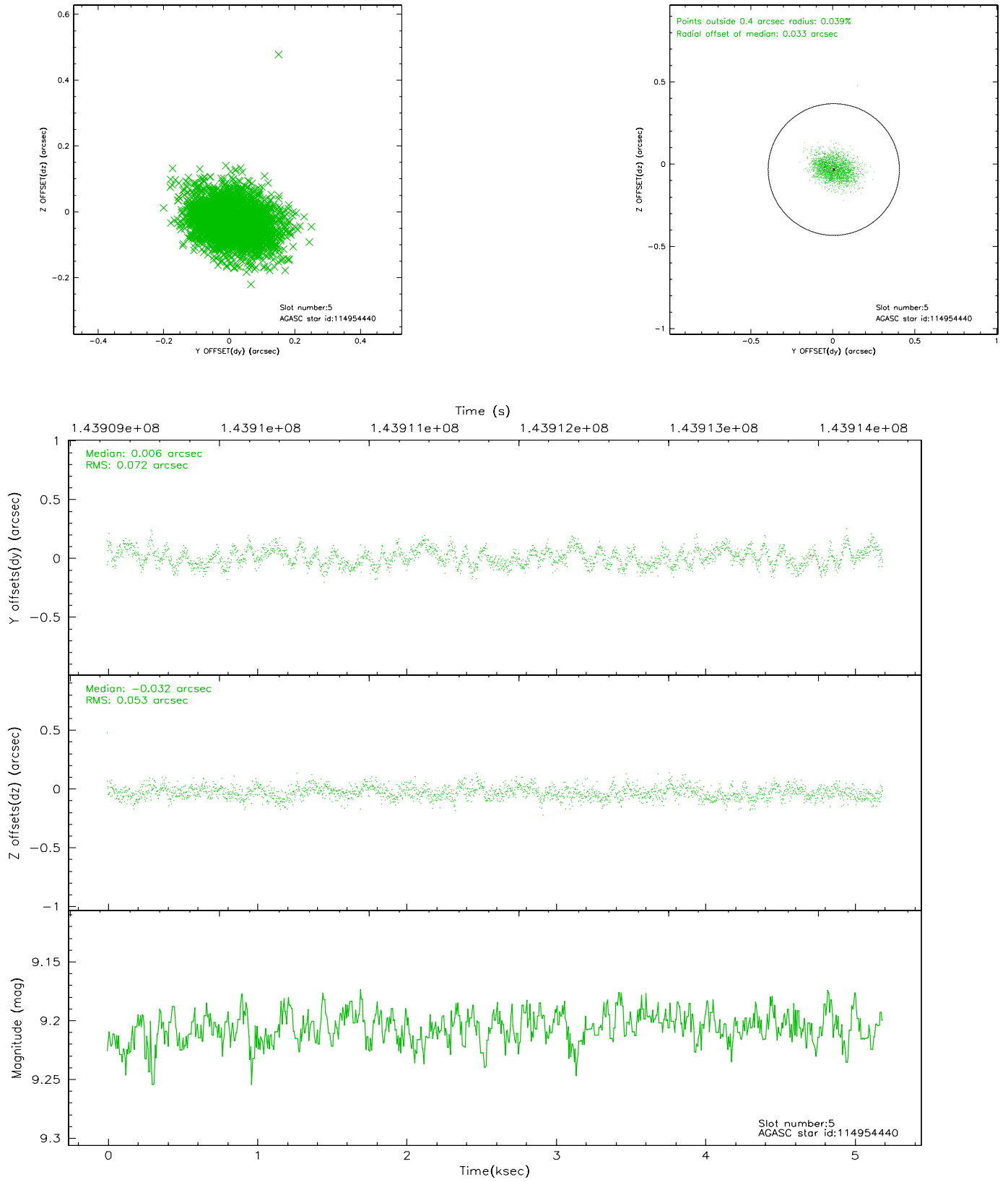
### 2.4.1 Slot 3



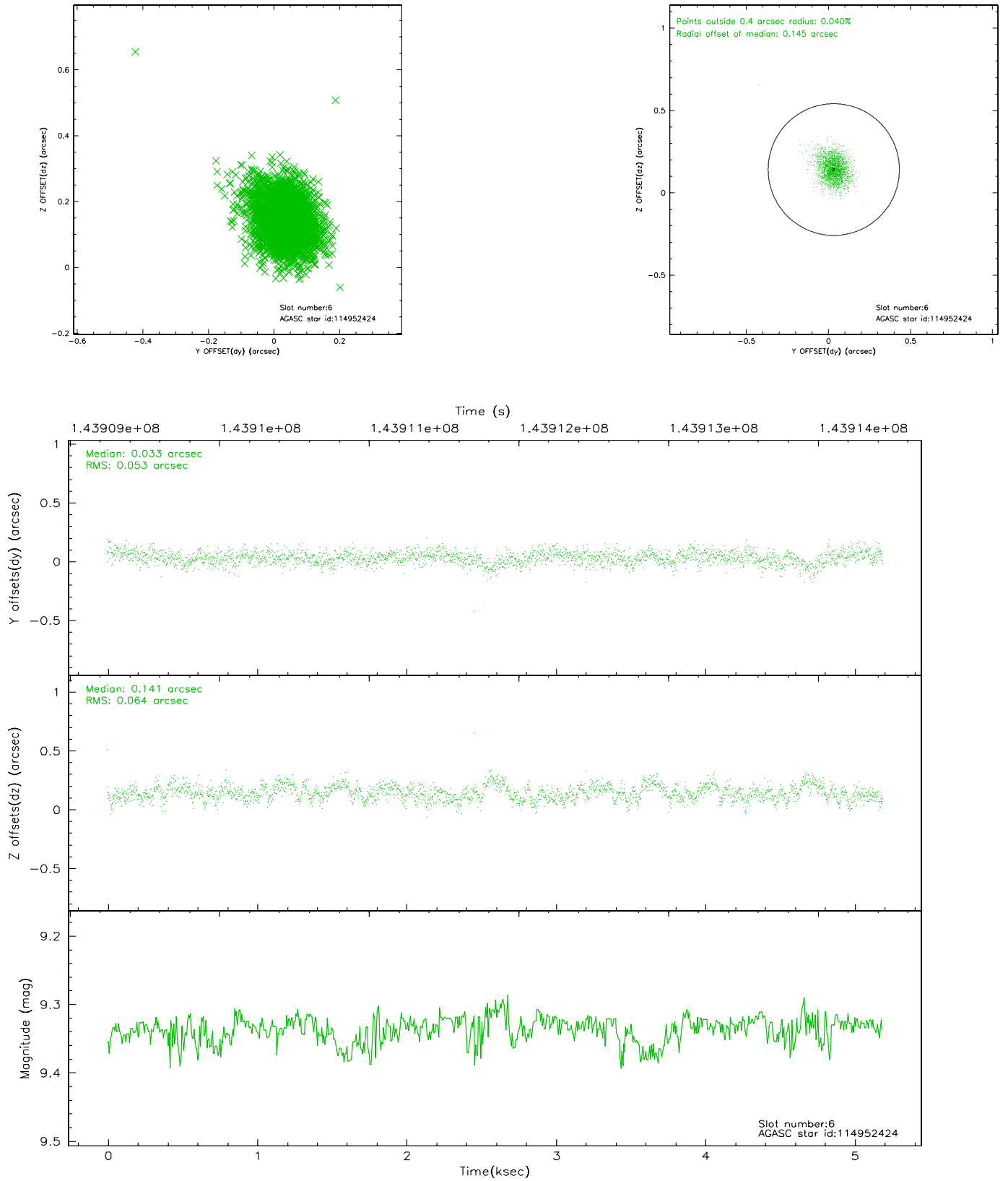
## 2.4.2 Slot 4



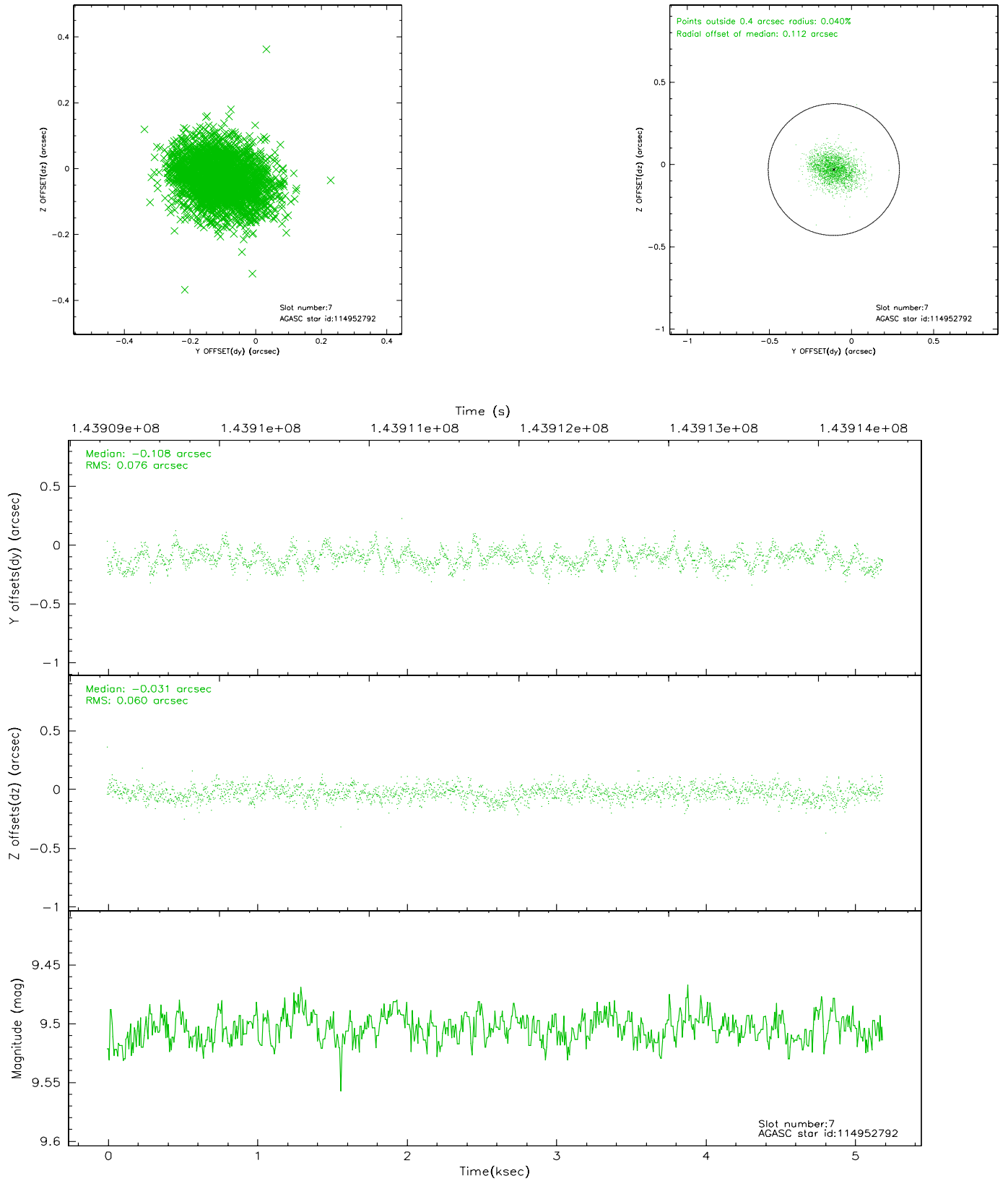
### 2.4.3 Slot 5



## 2.4.4 Slot 6

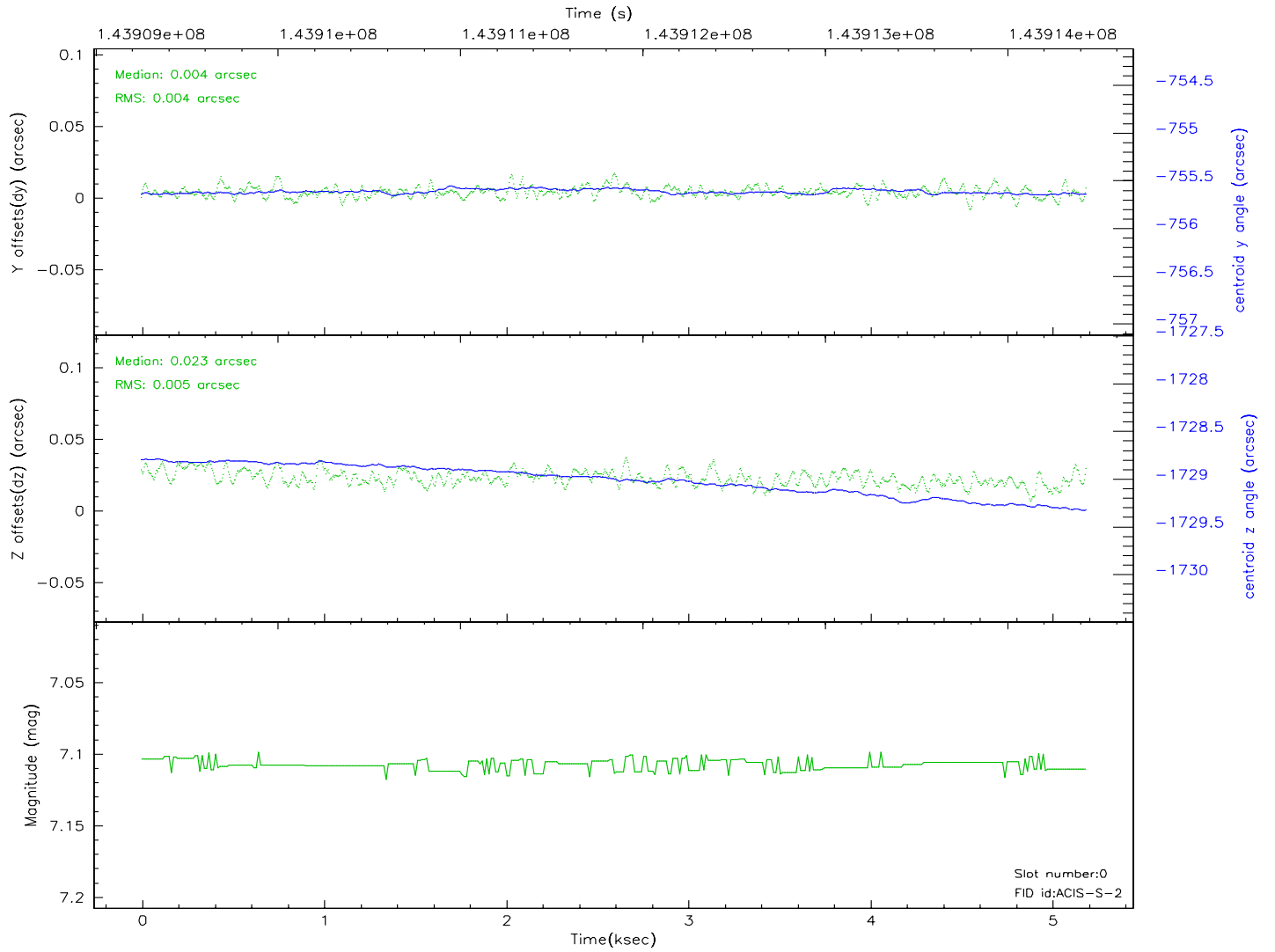
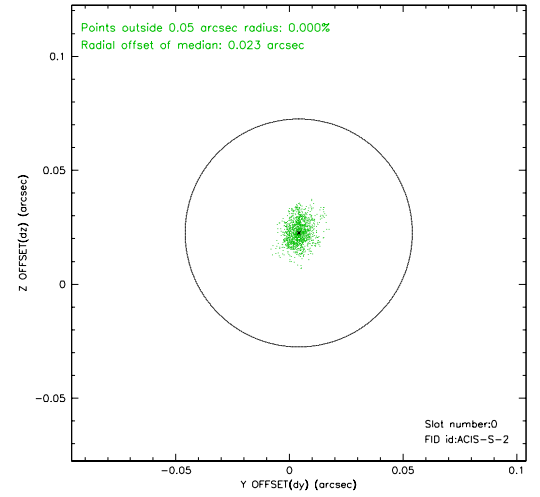
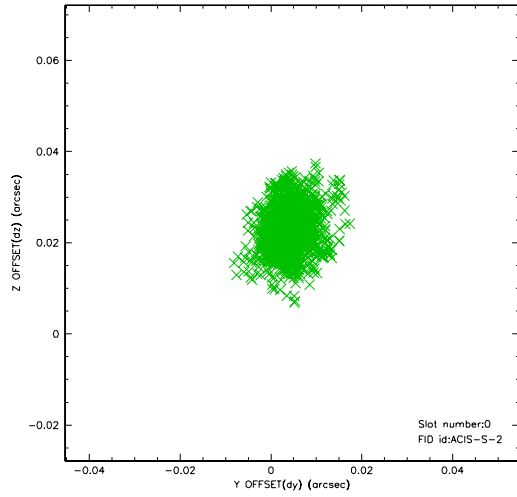


## 2.4.5 Slot 7

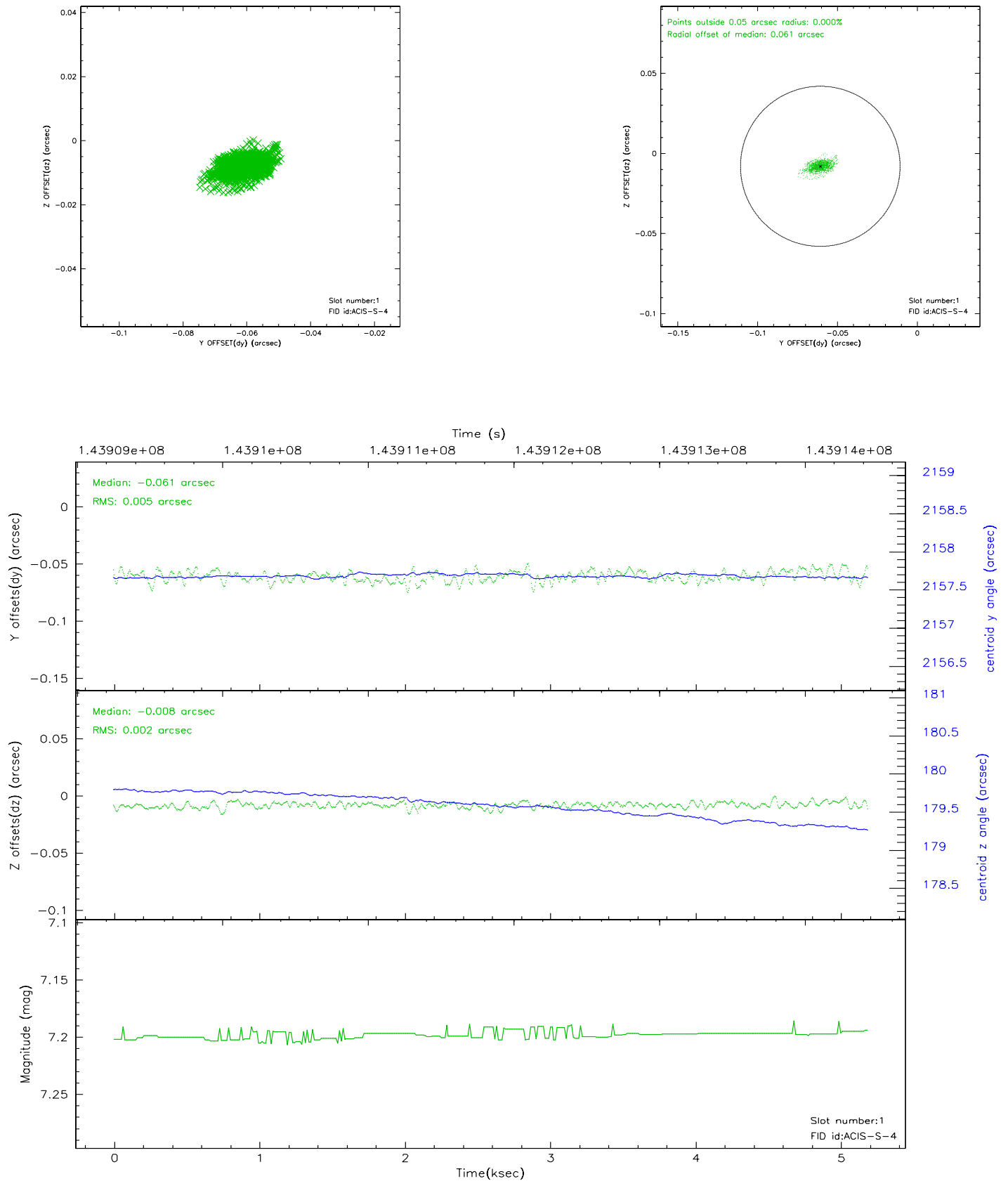


## 2.5 FID Slots

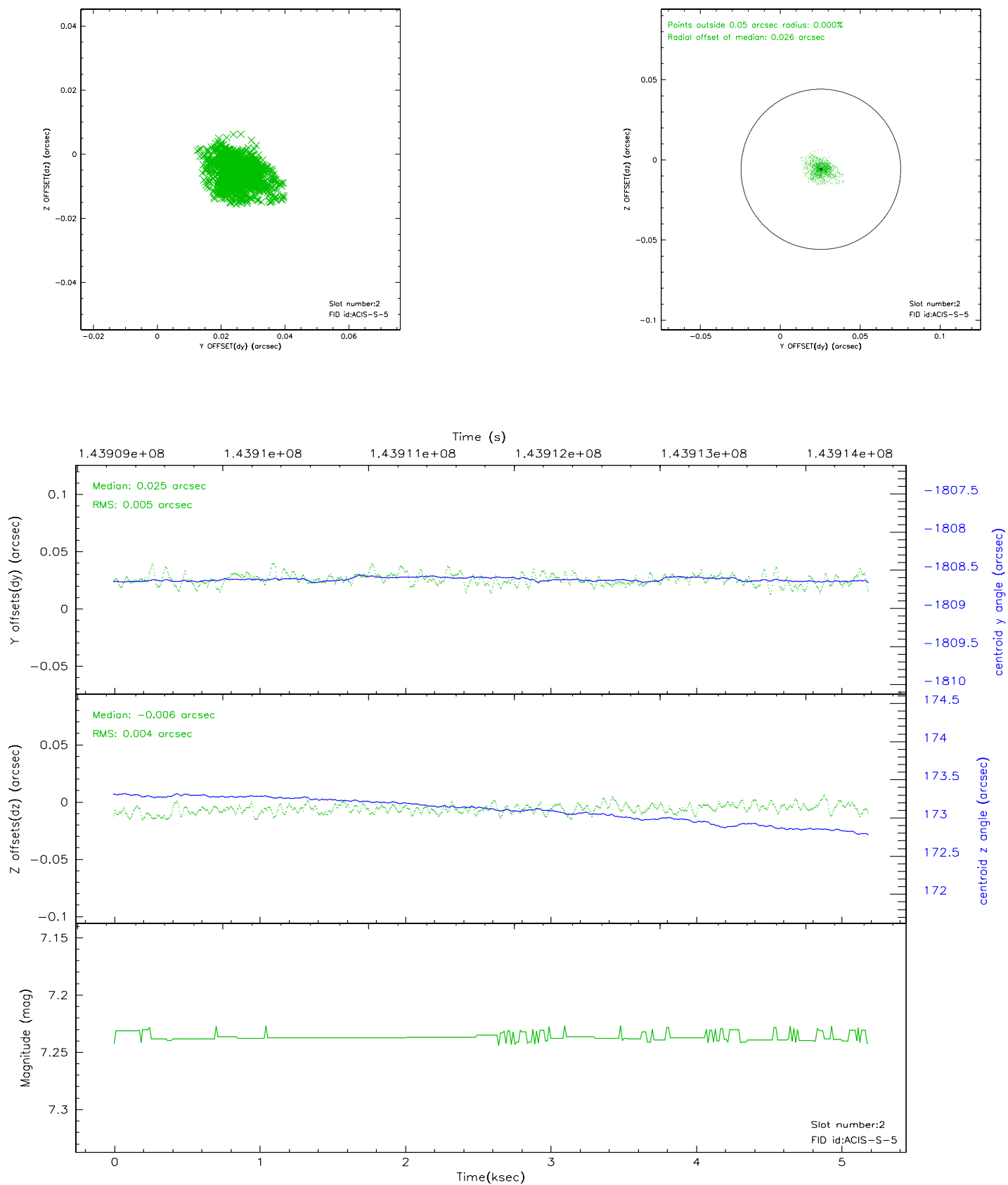
### 2.5.1 Slot 0



## 2.5.2 Slot 1

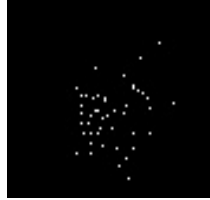


### 2.5.3 Slot 2



### 3 Point Sources

2.33 arcmin



## A Summary

### A.1 Status

V&V Scientist	Jen Lauer
V&V Date (YYYY-MM-DD)	2006.09.26
V&V Edition	1
V&V Disposition and Status	OK
V&V Charge Time	5.191

### A.2 Comments