

# V&V Reference Report

## L2 ASCDS Version : 7.6.9

Observation 3087 - L2 Version 001  
Chandra X-Ray Center

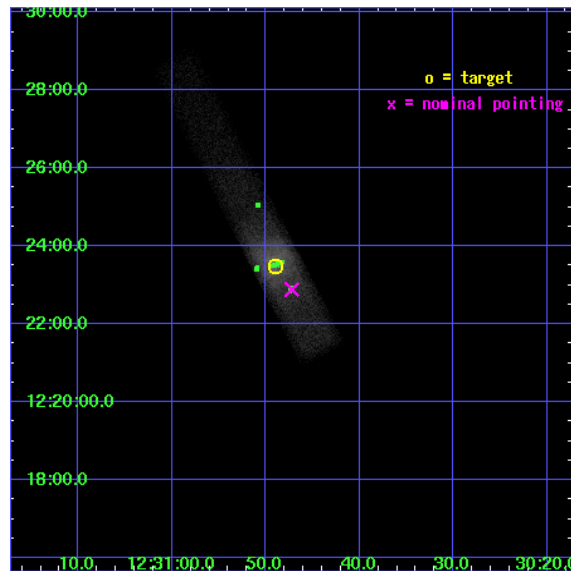
L2 Processing Date : Sep 19 2006

## Contents

<b>1</b>	<b>Front</b>	<b>2</b>
<b>2</b>	<b>OBI</b>	<b>3</b>
2.1	OBI . . . . .	3
2.1.1	Images . . . . .	3
2.1.2	Bias . . . . .	3
2.1.3	Parameters . . . . .	4
2.1.4	Events . . . . .	4
2.2	Compared Parameters . . . . .	5
2.3	Aspect . . . . .	6
2.4	Star Slots . . . . .	9
2.4.1	Slot 3 . . . . .	9
2.4.2	Slot 4 . . . . .	10
2.4.3	Slot 5 . . . . .	11
2.4.4	Slot 6 . . . . .	12
2.4.5	Slot 7 . . . . .	13
2.5	FID Slots . . . . .	14
2.5.1	Slot 0 . . . . .	14
2.5.2	Slot 1 . . . . .	15
2.5.3	Slot 2 . . . . .	16
<b>3</b>	<b>Point Sources</b>	<b>17</b>
<b>A</b>	<b>Summary</b>	<b>18</b>
A.1	Status . . . . .	18
A.2	Comments . . . . .	18

# 1 Front

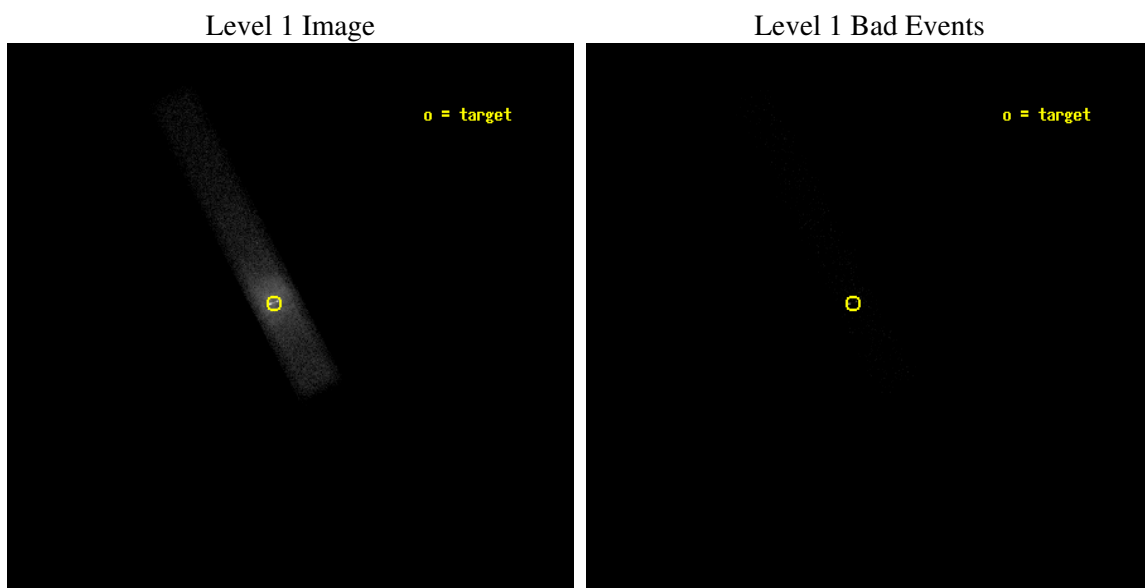
seq_num	700526
obs_id	3087
title	X-RAY VARIABILITY IN THE JET AND CORE OF M87
observer	Dr. Daniel Harris
object	M87
dtcycle	0
cycle	P
ra_targ	187.704167
dec_targ	12.391667
ra_nom	187.69681018172
dec_nom	12.38149719204
roll_nom	242.56515506462
revision	2
ontime	5483.200081706
livetime	4972.9730470761
ontime7	5483.200081706
l2events	60758



## 2 OBI

### 2.1 OBI

#### 2.1.1 Images



#### 2.1.2 Bias

Chip 7



### 2.1.3 Parameters

obi_num	1
ascdsver	7.6.9
caldbver	3.2.3
date	2006-09-19T07:58:18
revision	2

sched_exp_time	5000.000000
ontime	5860.0316095948
ontime7	5860.0316095948
l1events	67639

### 2.1.4 Events

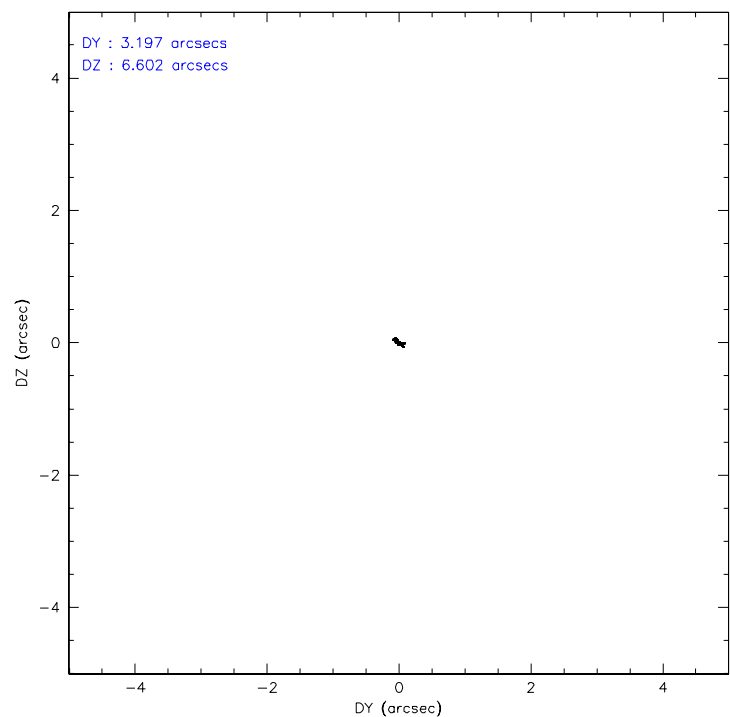
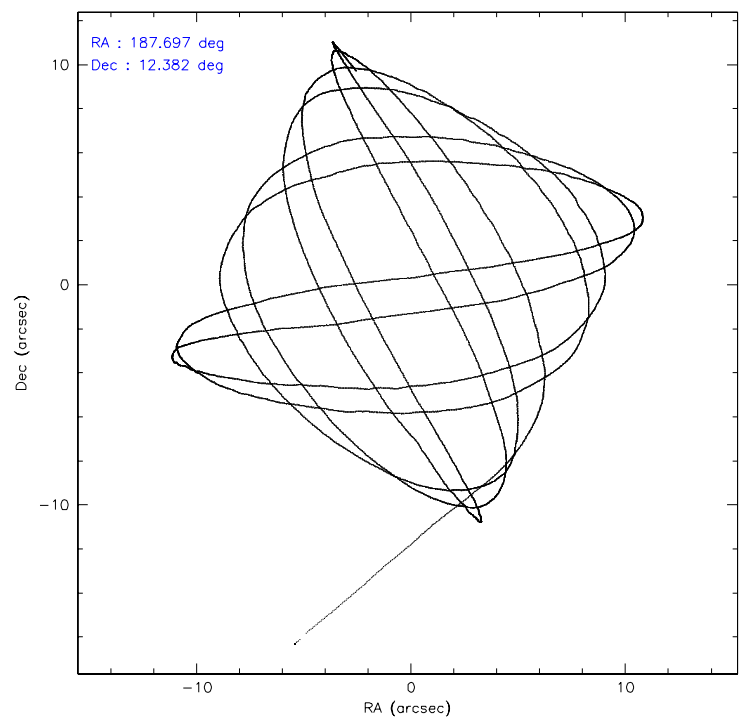
	<b>ccd 7</b>
level 1 events	67639
rejected events	6298
rejected %	9%

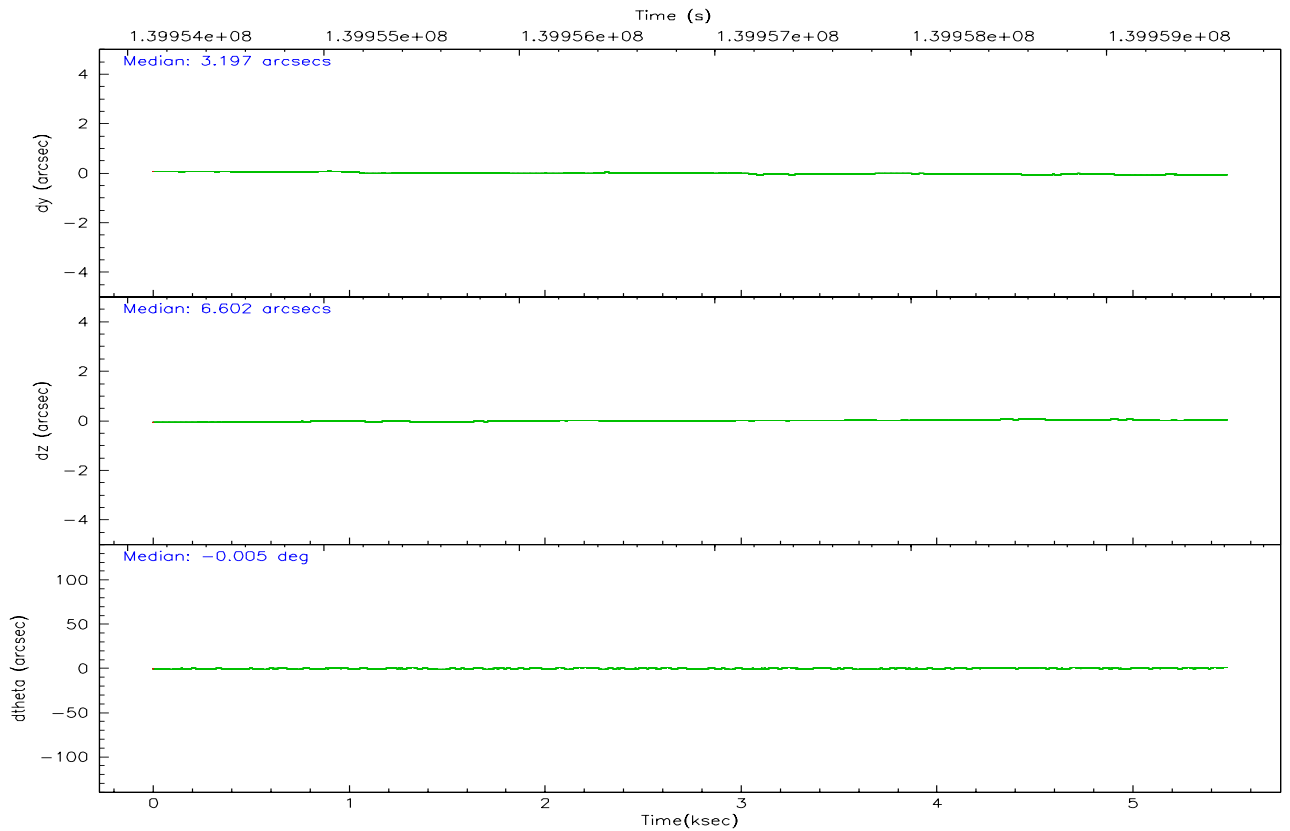
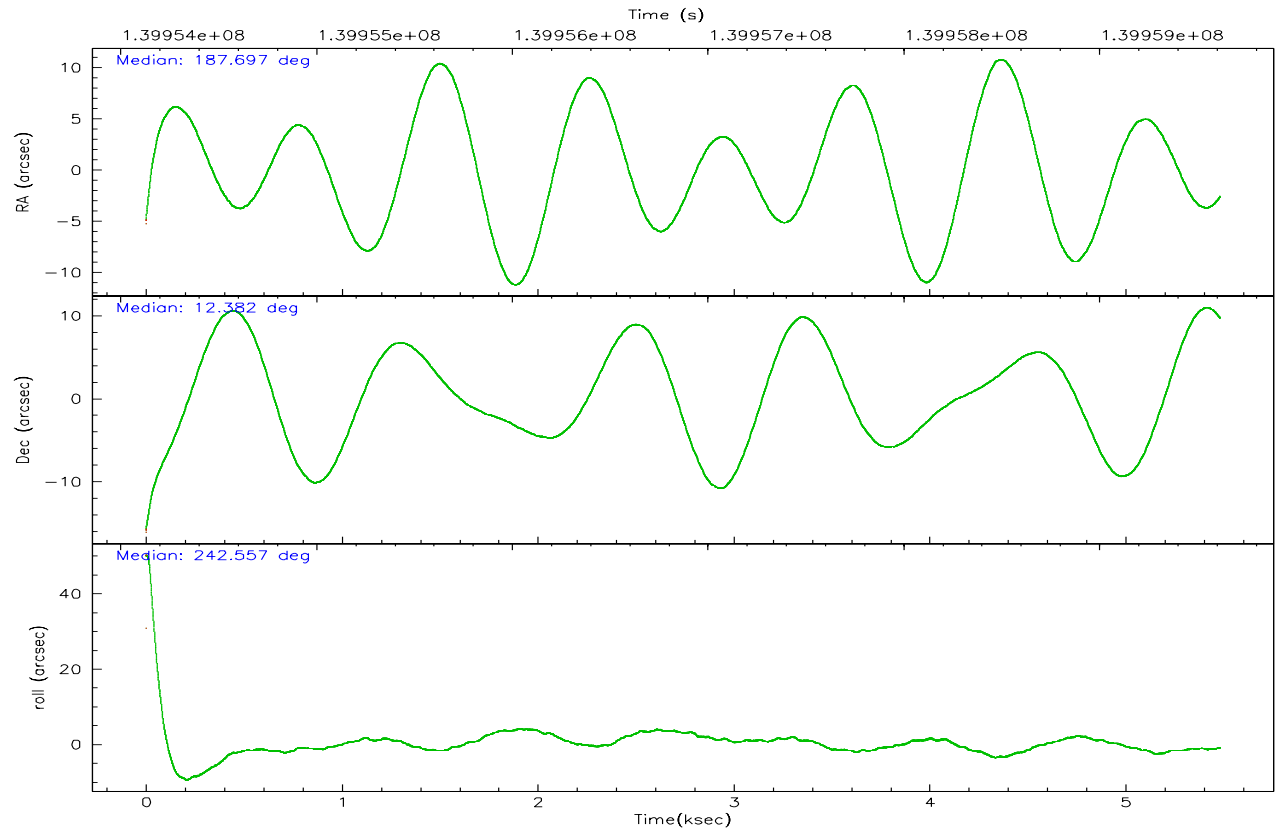
	<b>ccd 7</b>
grade 0 events	19971
	29%
grade 1 events	67
	0%
grade 2 events	17183
	25%
grade 3 events	7160
	10%
grade 4 events	7025
	10%
grade 5 events	950
	1%
grade 6 events	12006
	17%
grade 7 events	3277
	4%

## 2.2 Compared Parameters

Parameter	Planned	Actual	Parameter	Planned	Actual
Instrument	ACIS	ACIS	Obspar format version number	6	6
Detector	ACIS-7	ACIS-7	Obspar file type	PREDICTED	ACTUAL
Grating	NONE	NONE	Obspar update status	NONE	UPDATED
Data mode	FAINT	FAINT	Number of optional ACIS chips dropped	0	0
Observation mode	POINTING	POINTING	On-chip summing requested	N	N
Pointing RA	187.695169	187.6968101817152	Subarray requested	1/8	1/8
Pointing Dec	12.408668	12.38149719203989	Subarray start row	0	449
Pointing Roll	242.408747	242.5651550646212	Subarray row count	1024	128
SIM focus pos (mm)	-0.684267	-0.6828225247311905	Alternating exposures requested	N	N
SIM defocus (mm)	0	0.001444936568705701	Primary exposure time	0.000000	0.4
SIM translation stage pos (mm)	-190.132523	-190.1400660498719			
SIM translation stage offset (mm)	0	0.00754346686406393			
Observation start time	139954610.184000	139953485.59305			
Observation start date	2002-06-08T20:15:46	2002-06-08T19:58:05			
Observation end time	139959610.184000	139960038.41832			
Observation end date	2002-06-08T21:39:06	2002-06-08T21:47:18			
Read mode	TIMED	TIMED			

## 2.3 Aspect





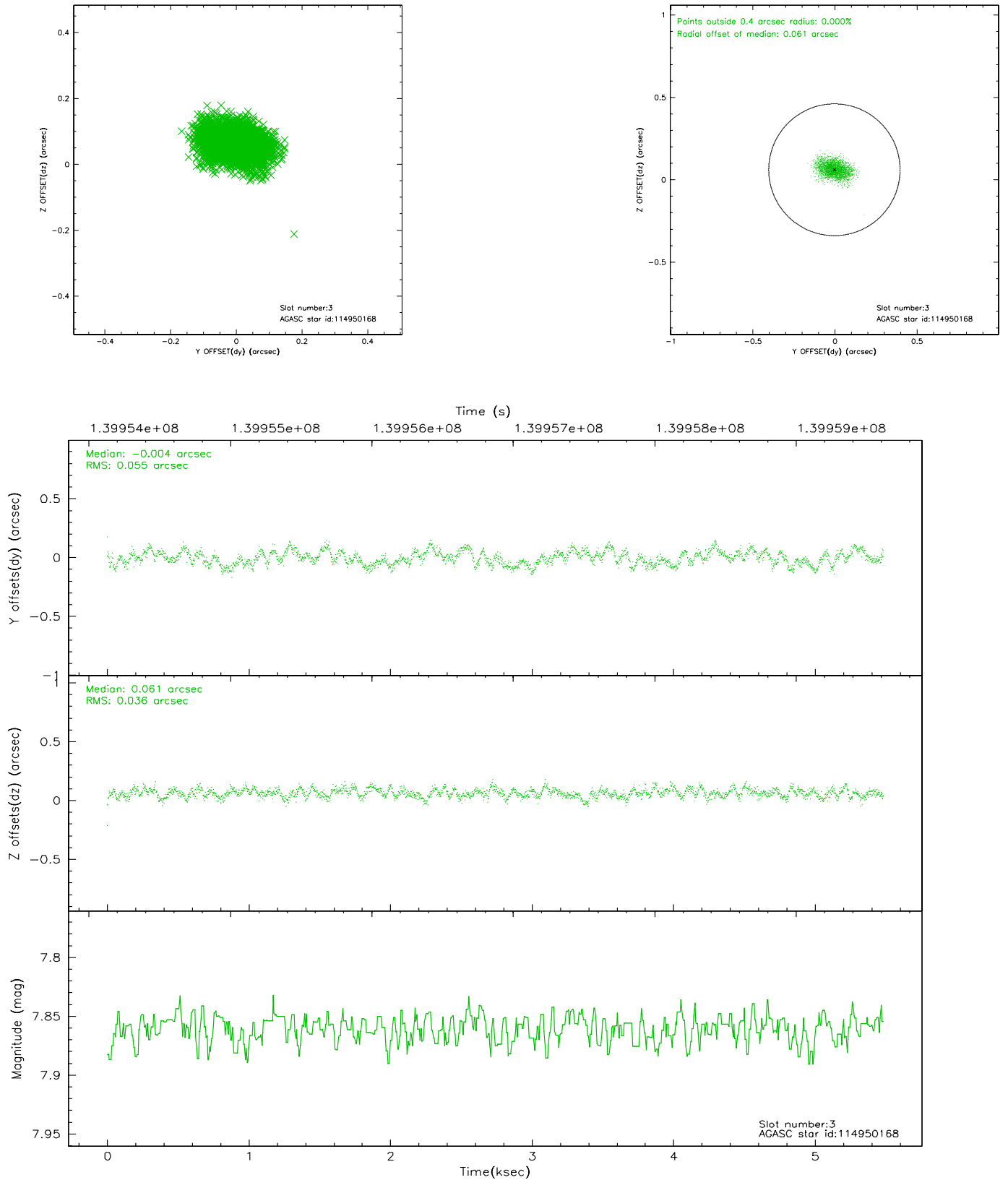
### Slot Statistics

slot	status	id	mag	n_pts	med_dy	med_dz	dr1	dr2	ra	dec	mean_y	mean_z
0	FID	ACIS-S-2	7.11	1338	-0.014	0.032	0.006	0.009	0.000000	0.000000	-755.83	-1727.74
1	FID	ACIS-S-4	7.20	1338	-0.046	-0.002	0.005	0.009	0.000000	0.000000	2156.90	179.62
2	FID	ACIS-S-5	7.24	1338	0.029	-0.021	0.006	0.011	0.000000	0.000000	-1807.24	174.47
3	GUIDE	114950168	7.86	2674	-0.004	0.061	0.070	0.114	187.143398	12.117441	1827.64	-1235.87
4	GUIDE	114957008	8.26	2675	0.141	-0.119	0.086	0.139	186.894794	12.099160	2290.43	-1982.88
5	GUIDE	114955056	8.32	2674	-0.059	0.038	0.070	0.109	187.914001	12.127854	540.07	1150.45
6	GUIDE	114952824	8.58	2676	-0.033	0.100	0.064	0.100	187.703904	12.486727	-262.56	-102.13
7	GUIDE	114952792	9.50	2669	-0.038	-0.079	0.086	0.140	187.070263	12.344747	1220.34	-1842.05

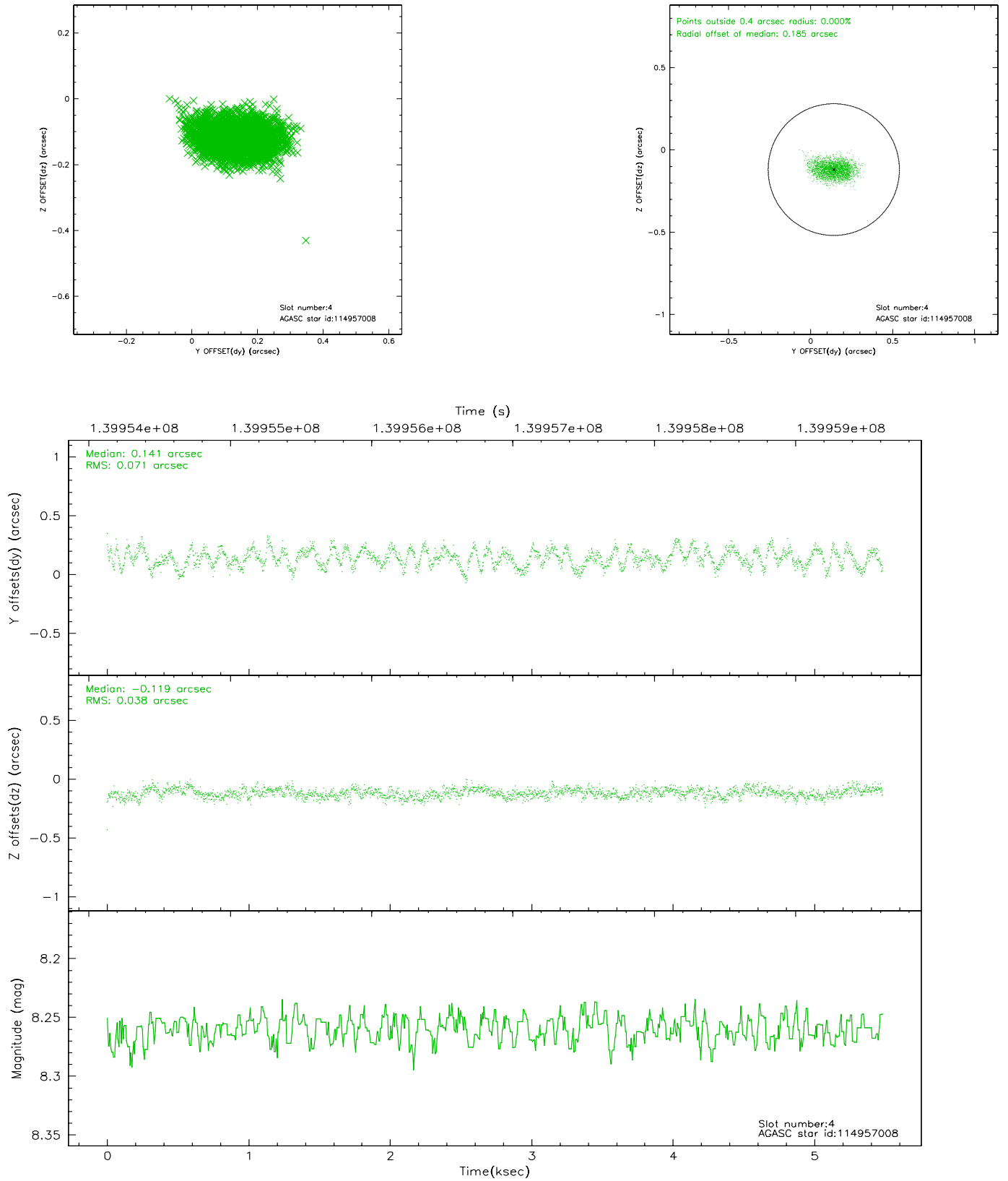


## 2.4 Star Slots

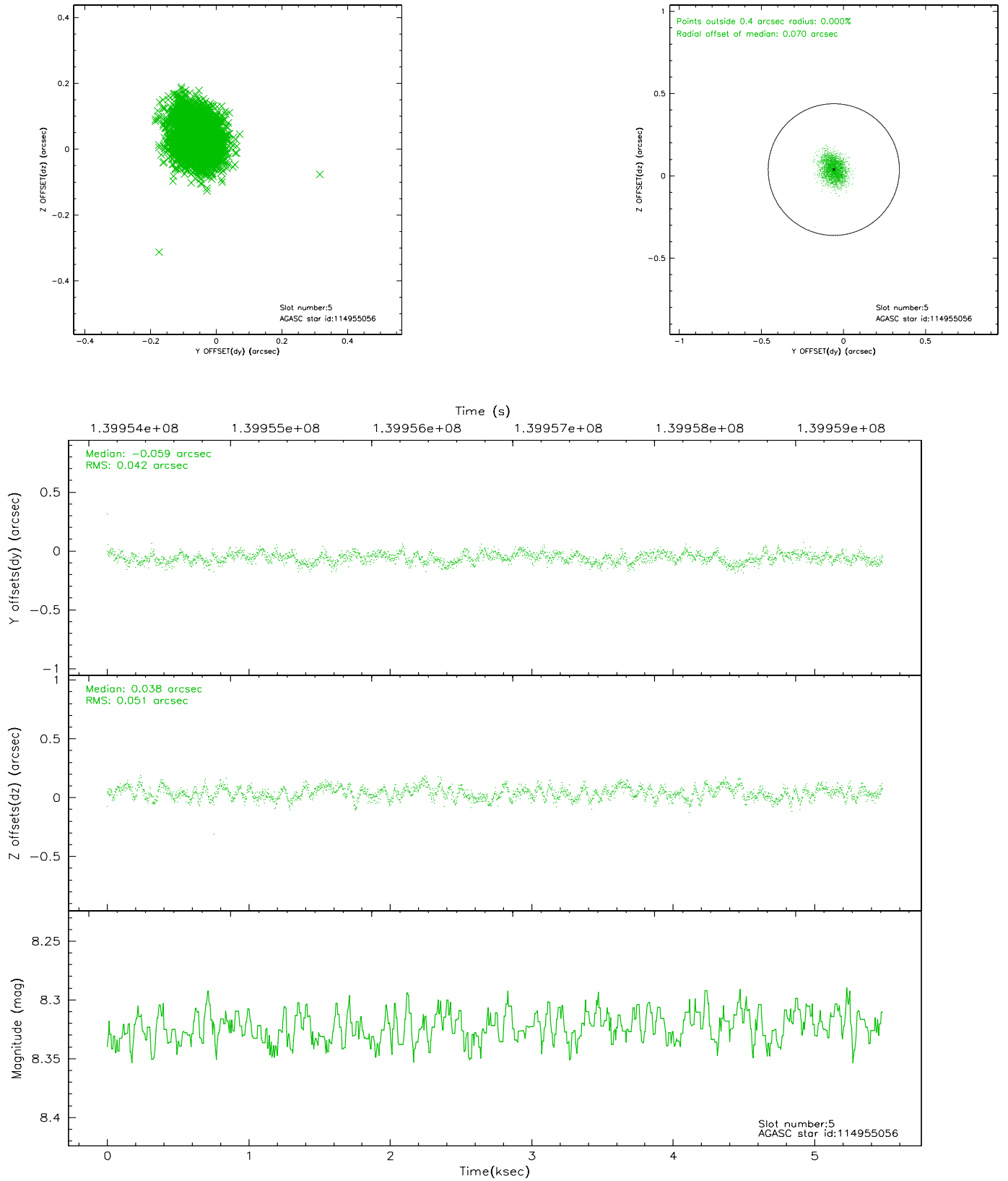
### 2.4.1 Slot 3



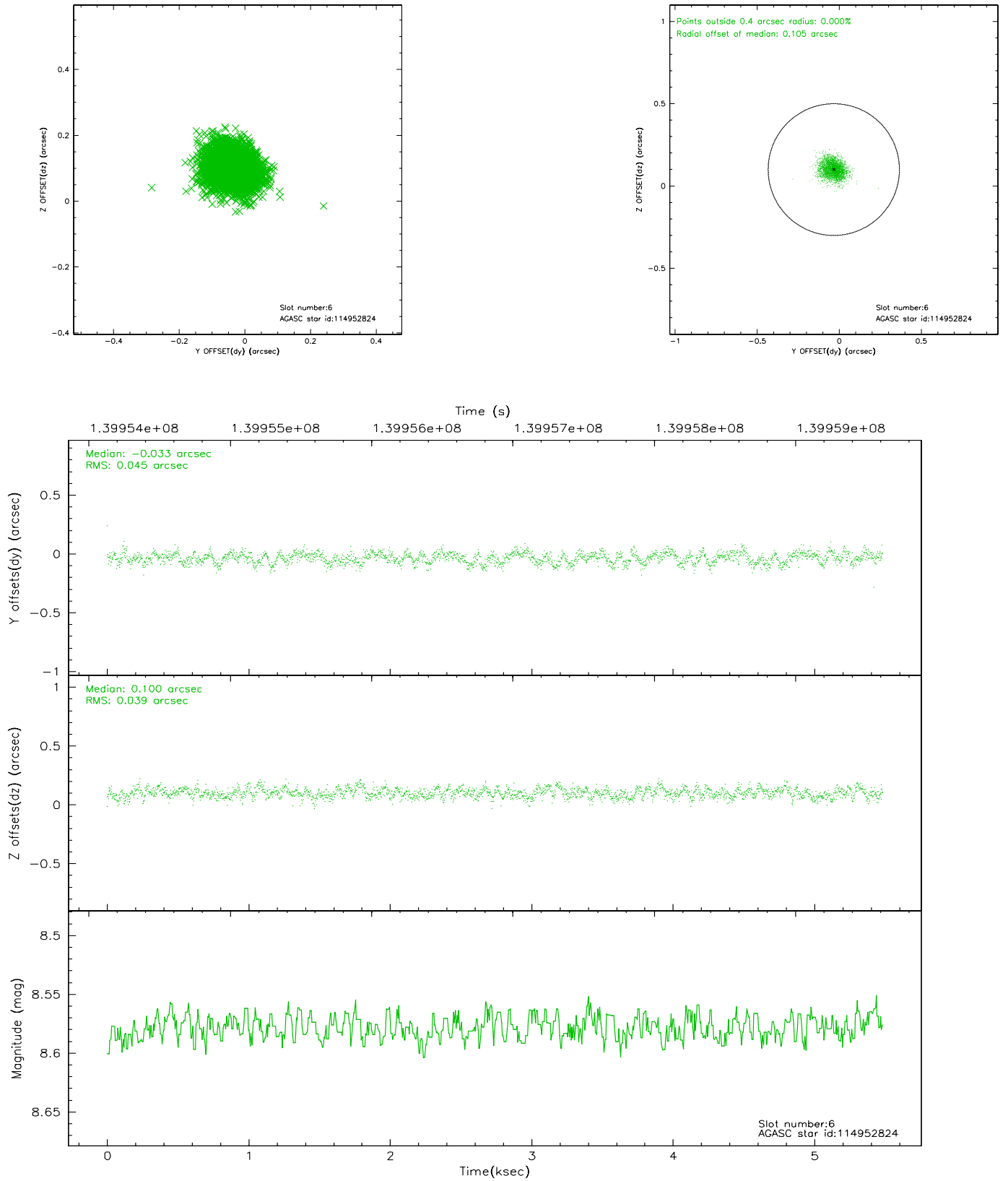
## 2.4.2 Slot 4



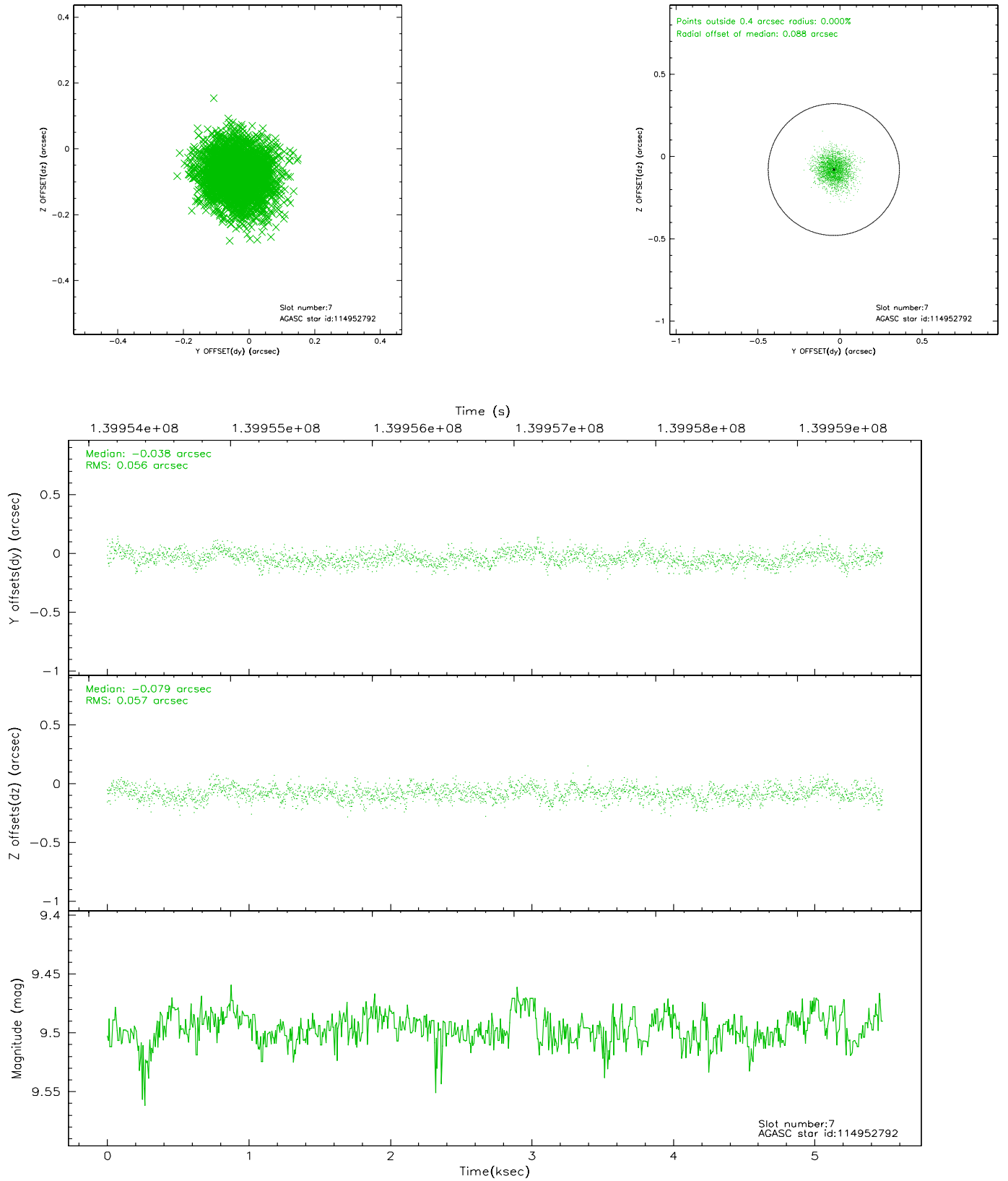
### 2.4.3 Slot 5



## 2.4.4 Slot 6

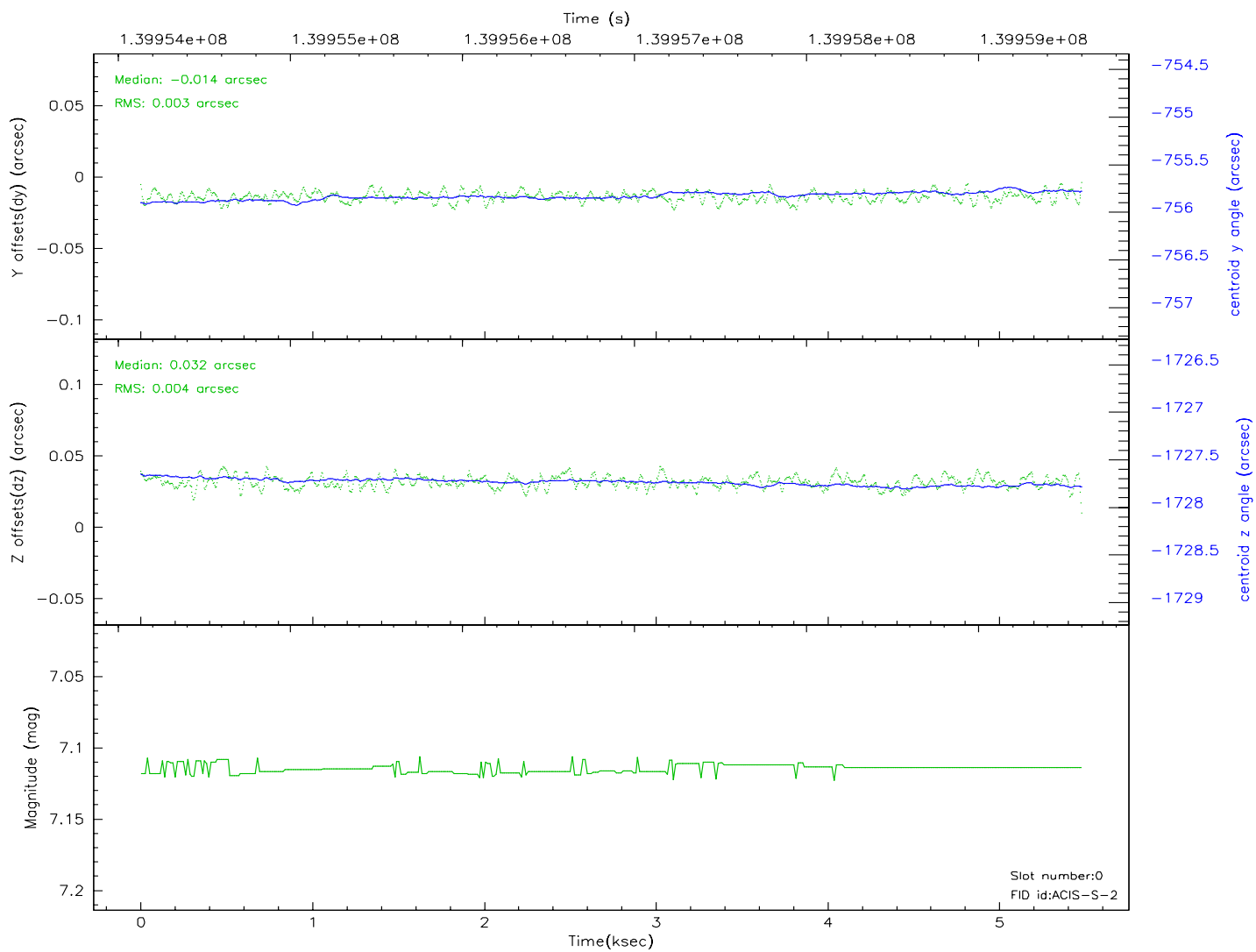
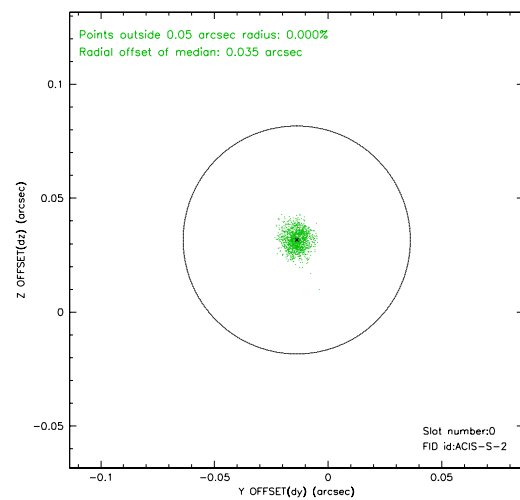
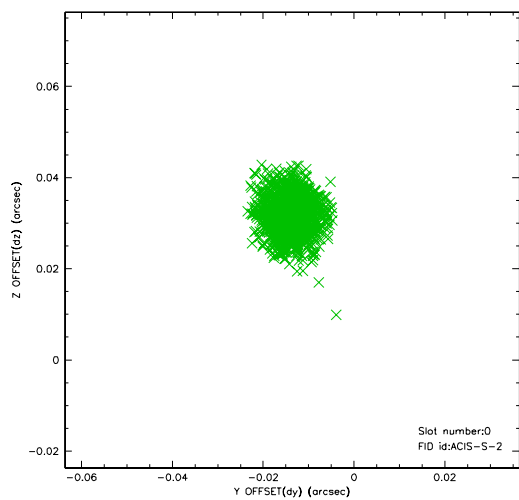


## 2.4.5 Slot 7

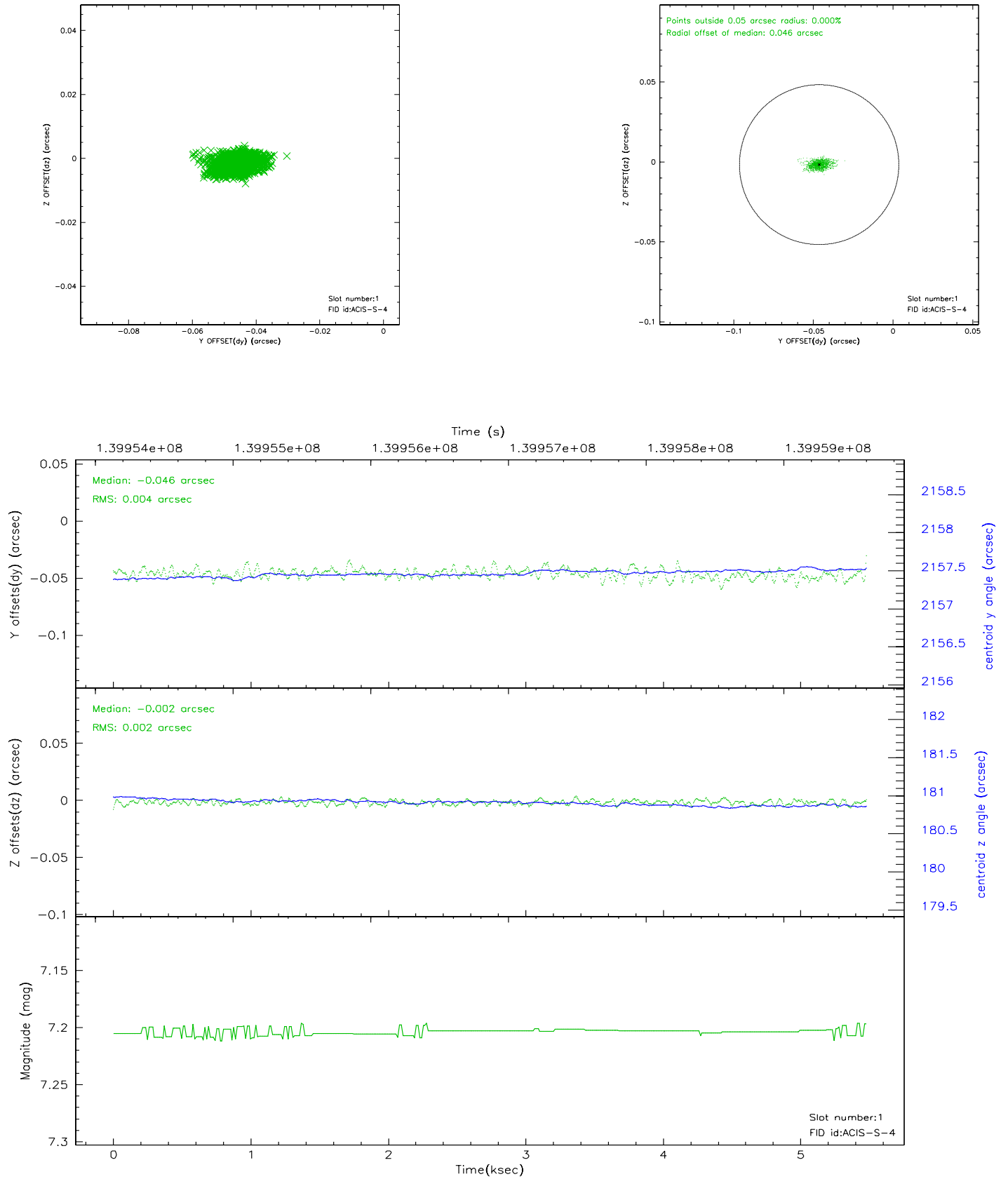


## 2.5 FID Slots

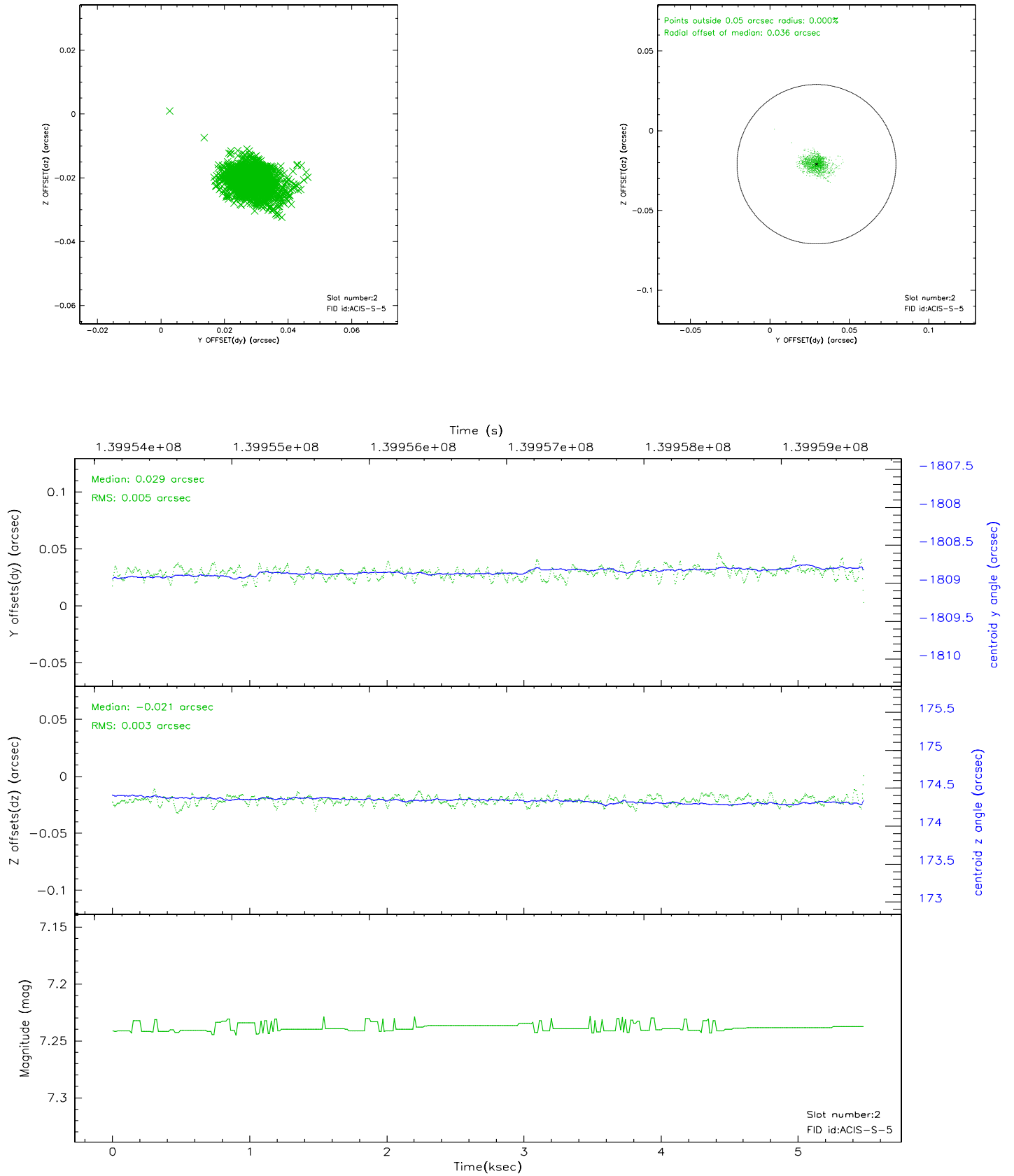
### 2.5.1 Slot 0



## 2.5.2 Slot 1



### 2.5.3 Slot 2





### 3 Point Sources

## A Summary

### A.1 Status

V&V Scientist	Jen Lauer
V&V Date (YYYY-MM-DD)	2006.09.19
V&V Edition	1
V&V Disposition and Status	OK
V&V Charge Time	5.483

### A.2 Comments

Monitor constraint met.