

V&V Reference Report

L2 ASCDS Version : 7.6.8.1

Observation 3085 - L2 Version 001
Chandra X-Ray Center

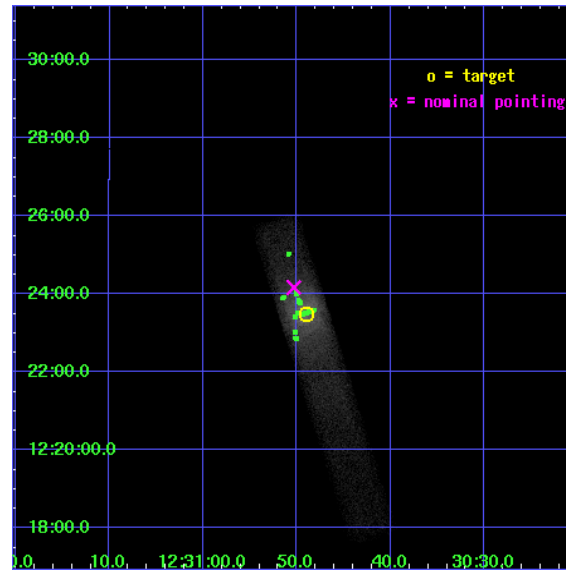
L2 Processing Date : Aug 26 2006

Contents

1	Front	2
2	OBI	3
2.1	OBI	3
2.1.1	Images	3
2.1.2	Bias	3
2.1.3	Parameters	4
2.1.4	Events	4
2.2	Compared Parameters	5
2.3	Aspect	6
2.4	Star Slots	9
2.4.1	Slot 3	9
2.4.2	Slot 4	10
2.4.3	Slot 5	11
2.4.4	Slot 6	12
2.4.5	Slot 7	13
2.5	FID Slots	14
2.5.1	Slot 0	14
2.5.2	Slot 1	15
2.5.3	Slot 2	16
3	Point Sources	17
A	Summary	18
A.1	Status	18
A.2	Comments	18

1 Front

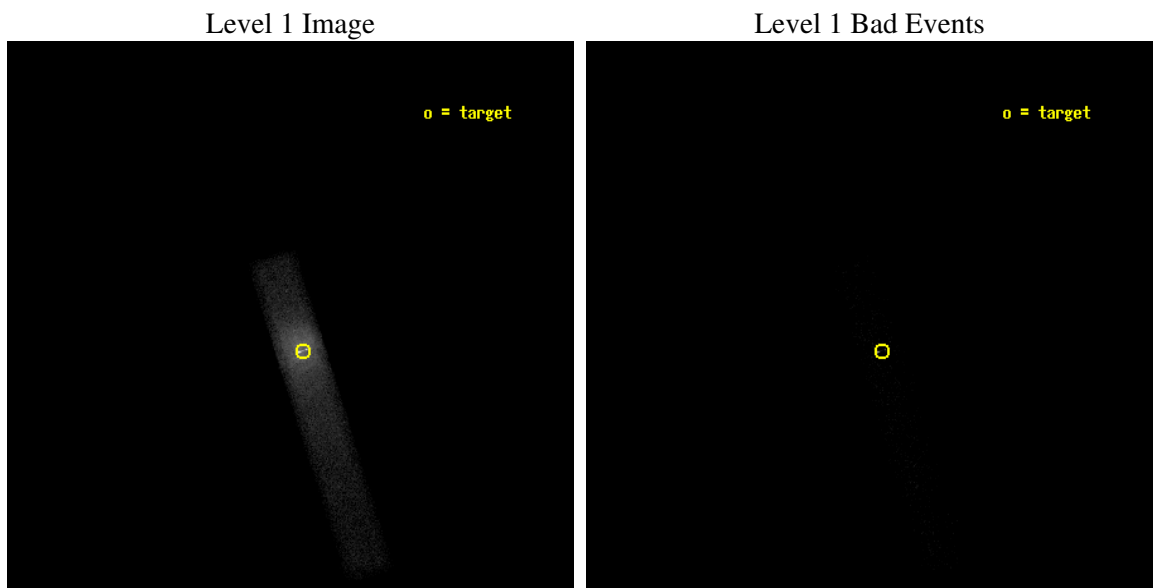
seq_num	700524
obs_id	3085
title	X-RAY VARIABILITY IN THE JET AND CORE OF M87
observer	Dr. Daniel Harris
object	M87
dtcycle	0
cycle	P
ra_targ	187.704167
dec_targ	12.391667
ra_nom	187.70971468087
dec_nom	12.402897014001
roll_nom	72.339294397919
revision	2
ontime	5390.4000803232
liveltime	4888.8083442075
ontime7	5390.4000803232
l2events	63411



2 OBI

2.1 OBI

2.1.1 Images



2.1.2 Bias

Chip 7



2.1.3 Parameters

obi_num	0
ascdsver	7.6.8.1
caldsver	3.2.3
date	2006-08-26T12:51:41
revision	2

sched_exp_time	4700.000000
ontime	5559.2407936603
ontime7	5559.2407936603
l1events	69822

2.1.4 Events

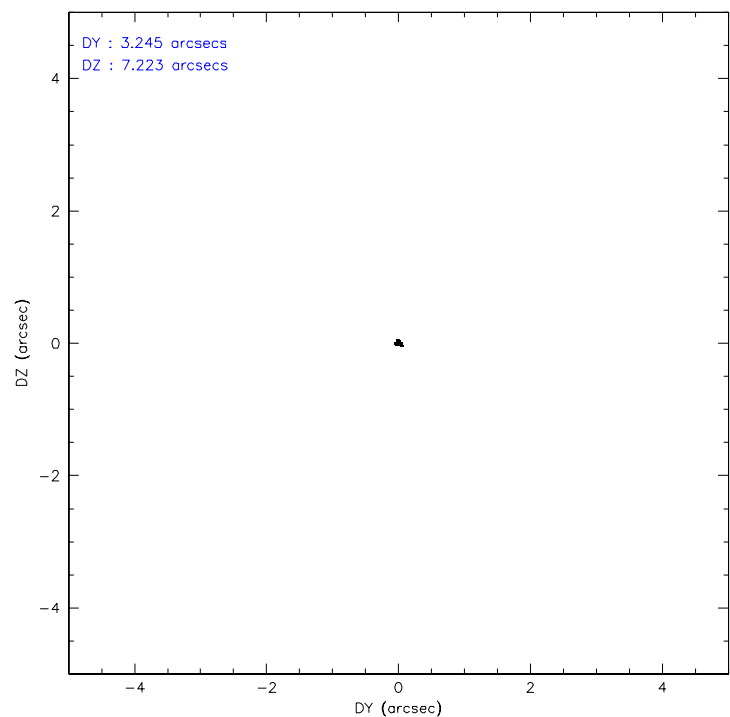
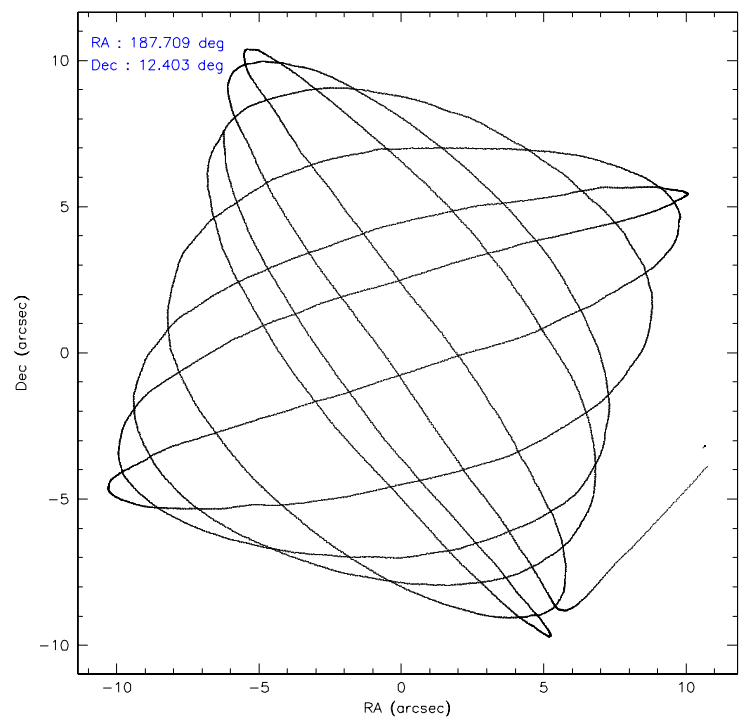
	ccd 7
level 1 events	69822
rejected events	5642
rejected %	8%

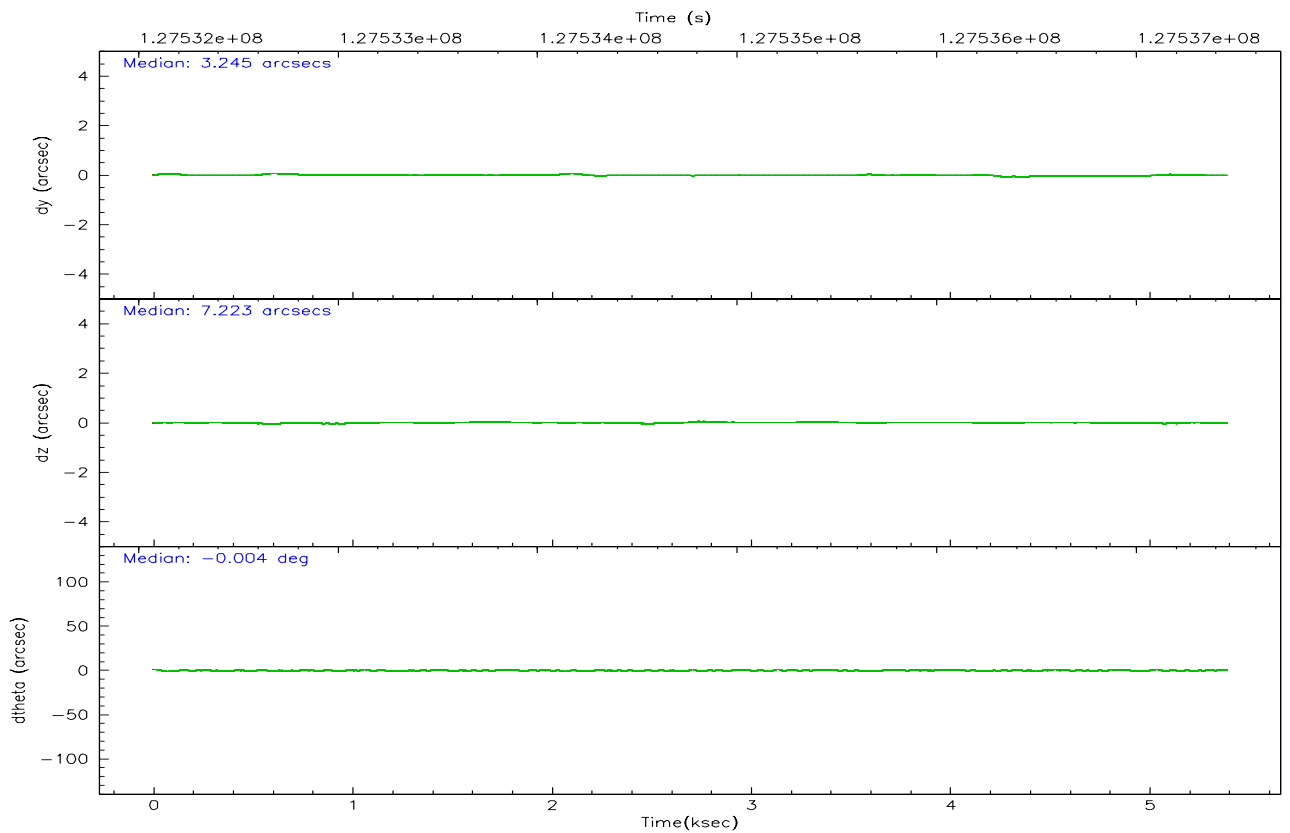
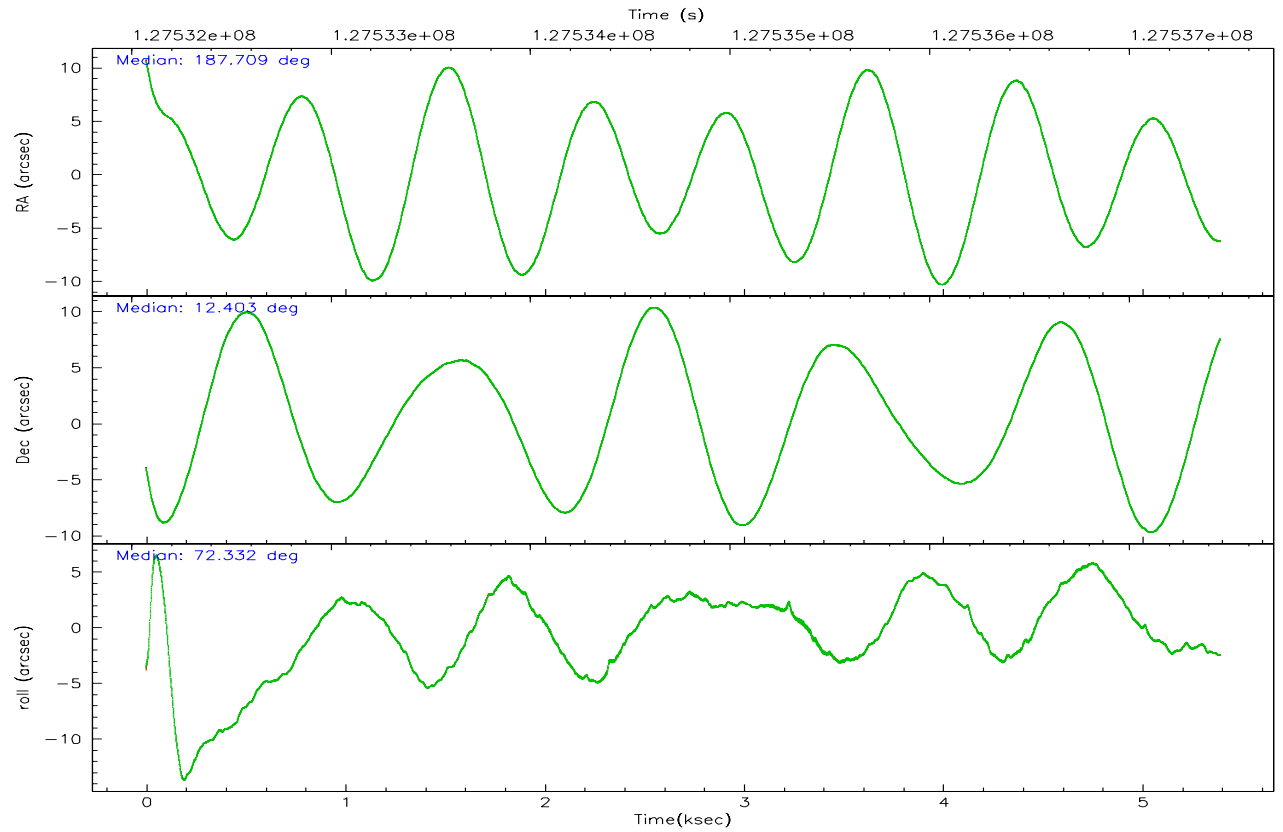
	ccd 7
grade 0 events	20340
	29%
grade 1 events	81
	0%
grade 2 events	17530
	25%
grade 3 events	7520
	10%
grade 4 events	7299
	10%
grade 5 events	933
	1%
grade 6 events	12937
	18%
grade 7 events	3182
	4%

2.2 Compared Parameters

Parameter	Planned	Actual	Parameter	Planned	Actual
Instrument	ACIS	ACIS	Obspar format version number	6	6
Detector	ACIS-7	ACIS-7	Obspar file type	PREDICTED	ACTUAL
Grating	NONE	NONE	Obspar update status	NONE	UPDATED
Data mode	FAINT	FAINT	On-chip summing requested	N	N
Observation mode	POINTING	POINTING	Subarray requested	1/8	1/8
Pointing RA	187.715989	187.7097146808657	Subarray start row	0	449
Pointing Dec	12.376398	12.40289701400098	Subarray row count	1024	128
Pointing Roll	72.181324	72.33929439791945	Alternating exposures requested	N	N
SIM focus pos (mm)	-0.684267	-0.6828225247311905	Primary exposure time	0.000000	0.4
SIM defocus (mm)	0	0.001444936568705701			
SIM translation stage pos (mm)	-190.132523	-190.1400660498719			
SIM translation stage offset (mm)	0	0.00754346686406393			
Observation start time	127532760.184000	127531551.08915			
Observation start date	2002-01-16T01:44:56	2002-01-16T01:25:51			
Observation end time	127537460.184000	127538211.53941			
Observation end date	2002-01-16T03:03:16	2002-01-16T03:16:51			
Read mode	TIMED	TIMED			

2.3 Aspect



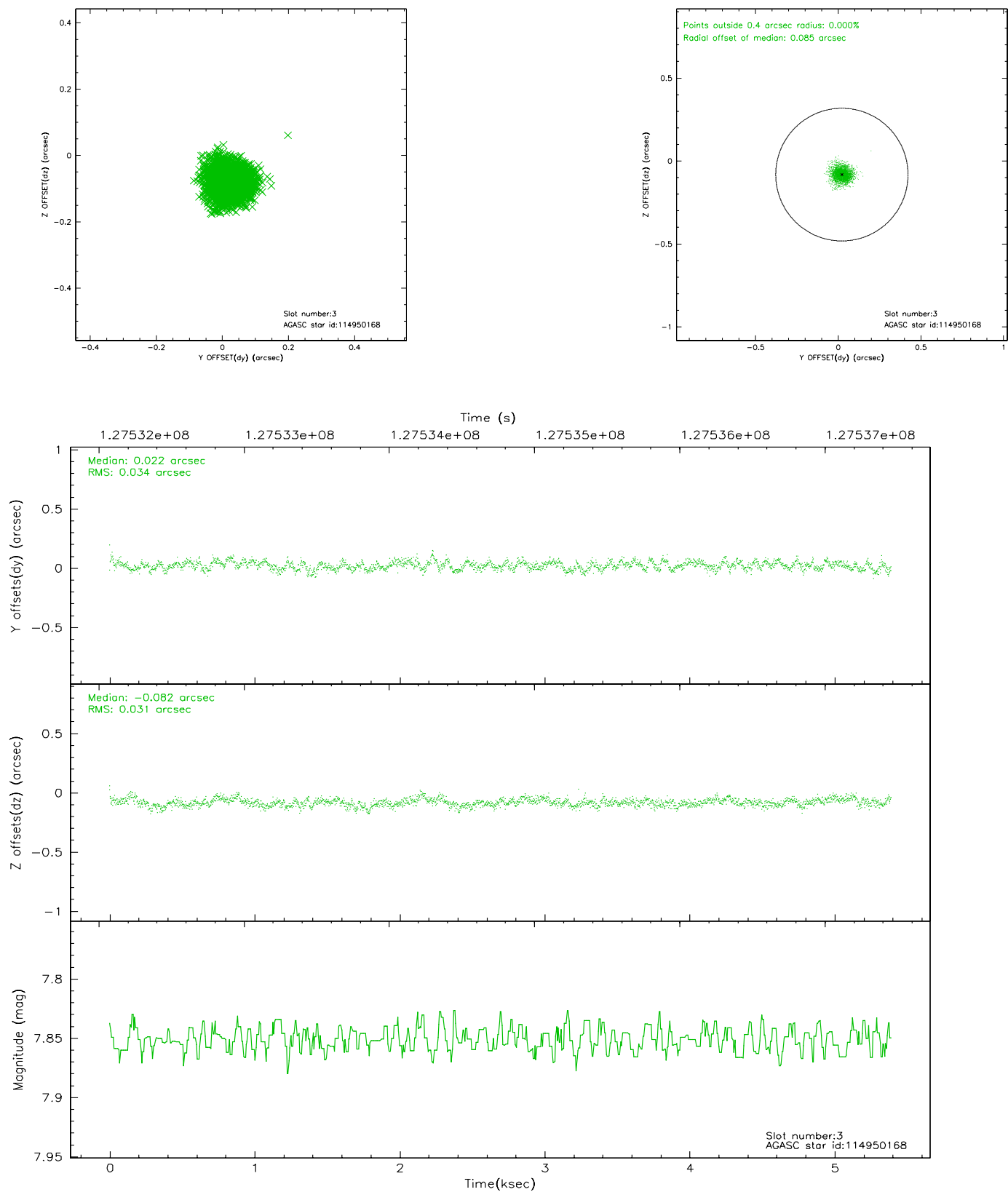


Slot Statistics

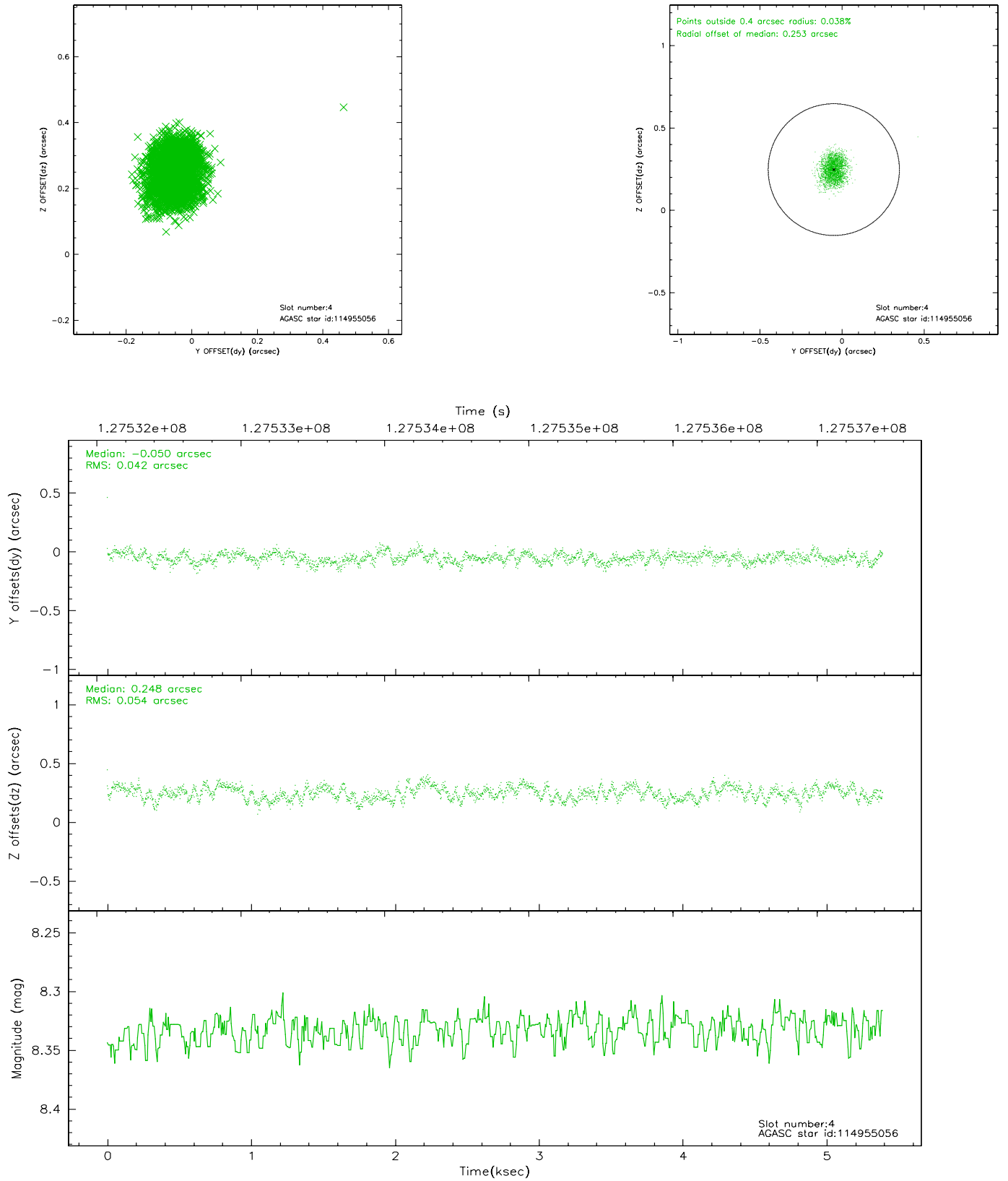
slot	status	id	mag	n_pts	med_dy	med_dz	dr1	dr2	ra	dec	mean_y	mean_z
0	FID	ACIS-S-2	7.11	1316	0.003	0.028	0.006	0.010	0.000000	0.000000	-755.89	-1728.37
1	FID	ACIS-S-4	7.20	1316	-0.066	-0.009	0.005	0.008	0.000000	0.000000	2156.81	178.93
2	FID	ACIS-S-5	7.24	1316	0.033	-0.010	0.006	0.010	0.000000	0.000000	-1807.26	173.86
3	GUIDE	114950168	7.85	2631	0.022	-0.082	0.049	0.079	187.143398	12.117441	-1500.98	1633.10
4	GUIDE	114955056	8.33	2631	-0.050	0.248	0.074	0.113	187.914001	12.127854	-637.35	-937.16
5	GUIDE	114952824	8.56	2629	-0.130	-0.023	0.065	0.110	187.703904	12.486727	366.19	160.98
6	GUIDE	114950584	9.19	2630	0.197	0.043	0.111	0.171	187.487323	11.827248	-2126.58	161.38
7	GUIDE	114952792	9.52	2625	-0.036	-0.186	0.083	0.133	187.070263	12.344747	-800.57	2127.09

2.4 Star Slots

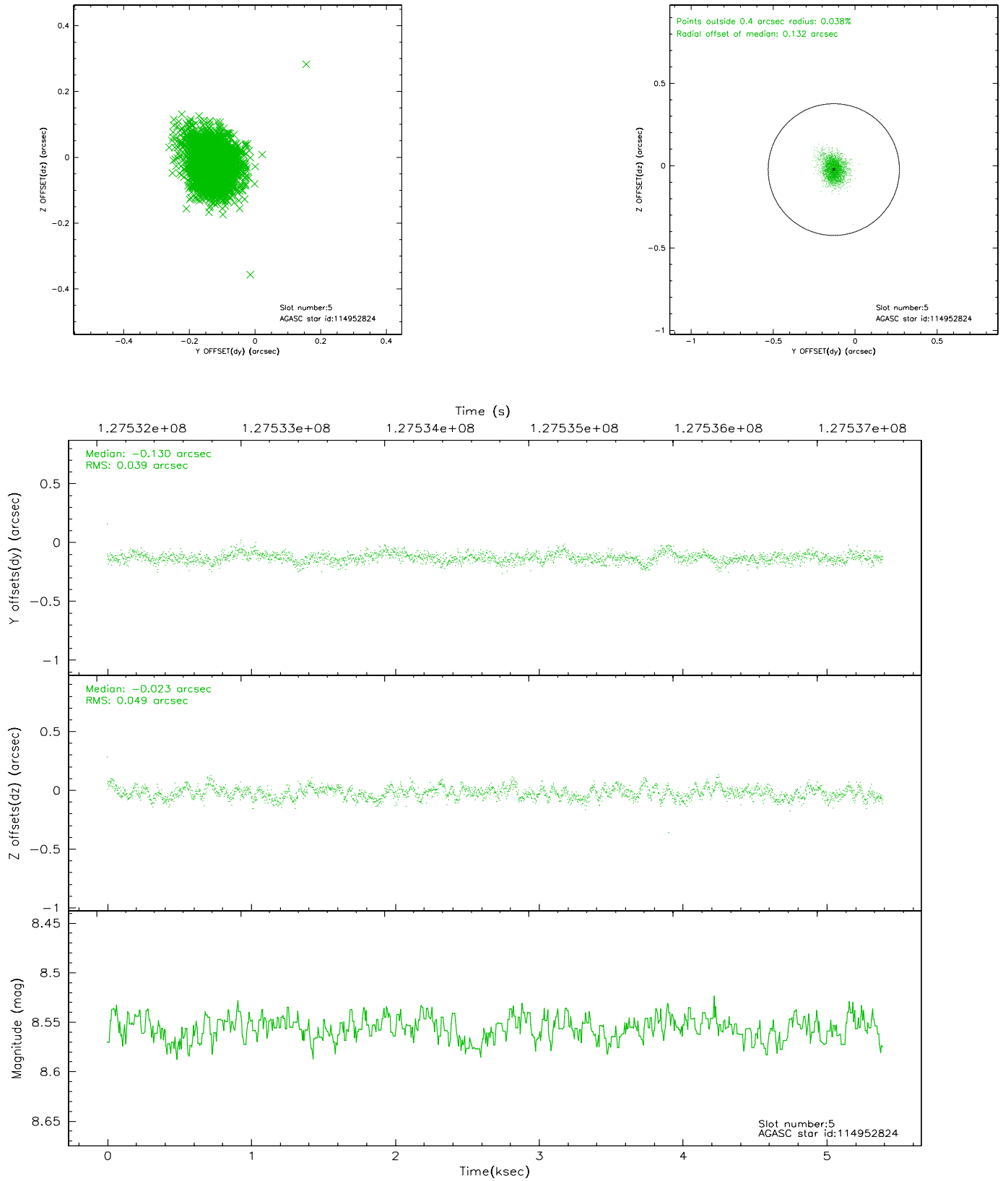
2.4.1 Slot 3



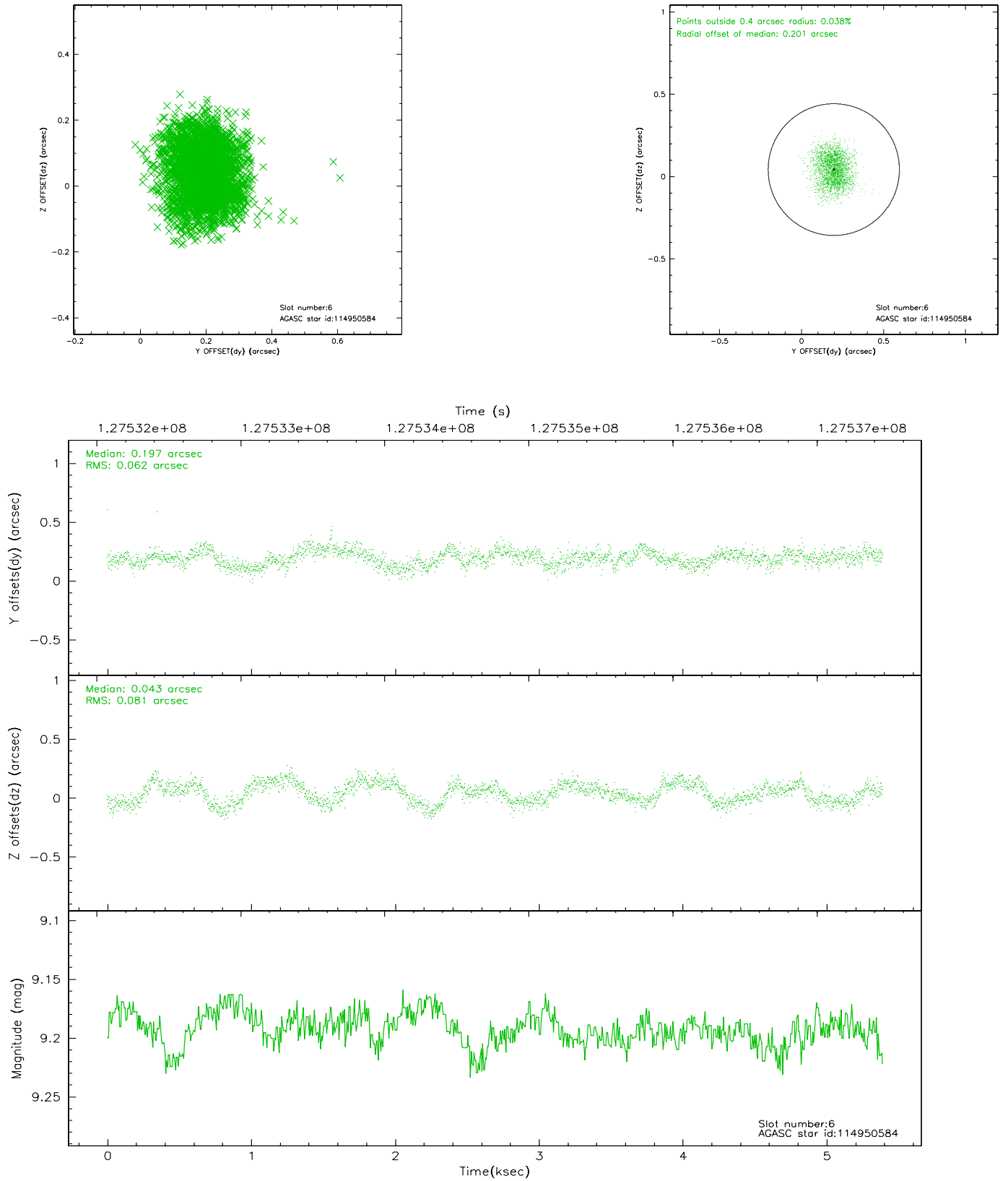
2.4.2 Slot 4



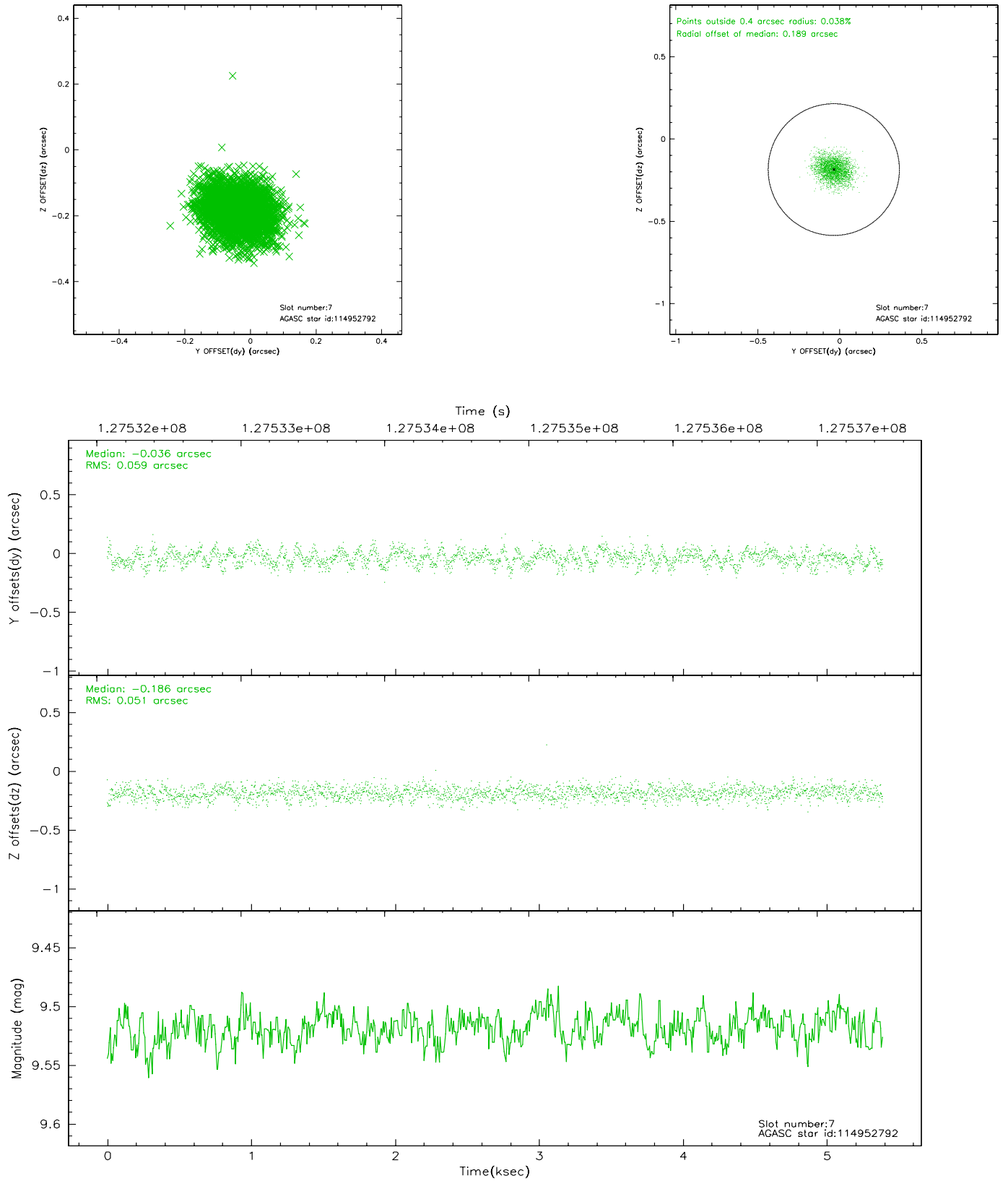
2.4.3 Slot 5



2.4.4 Slot 6

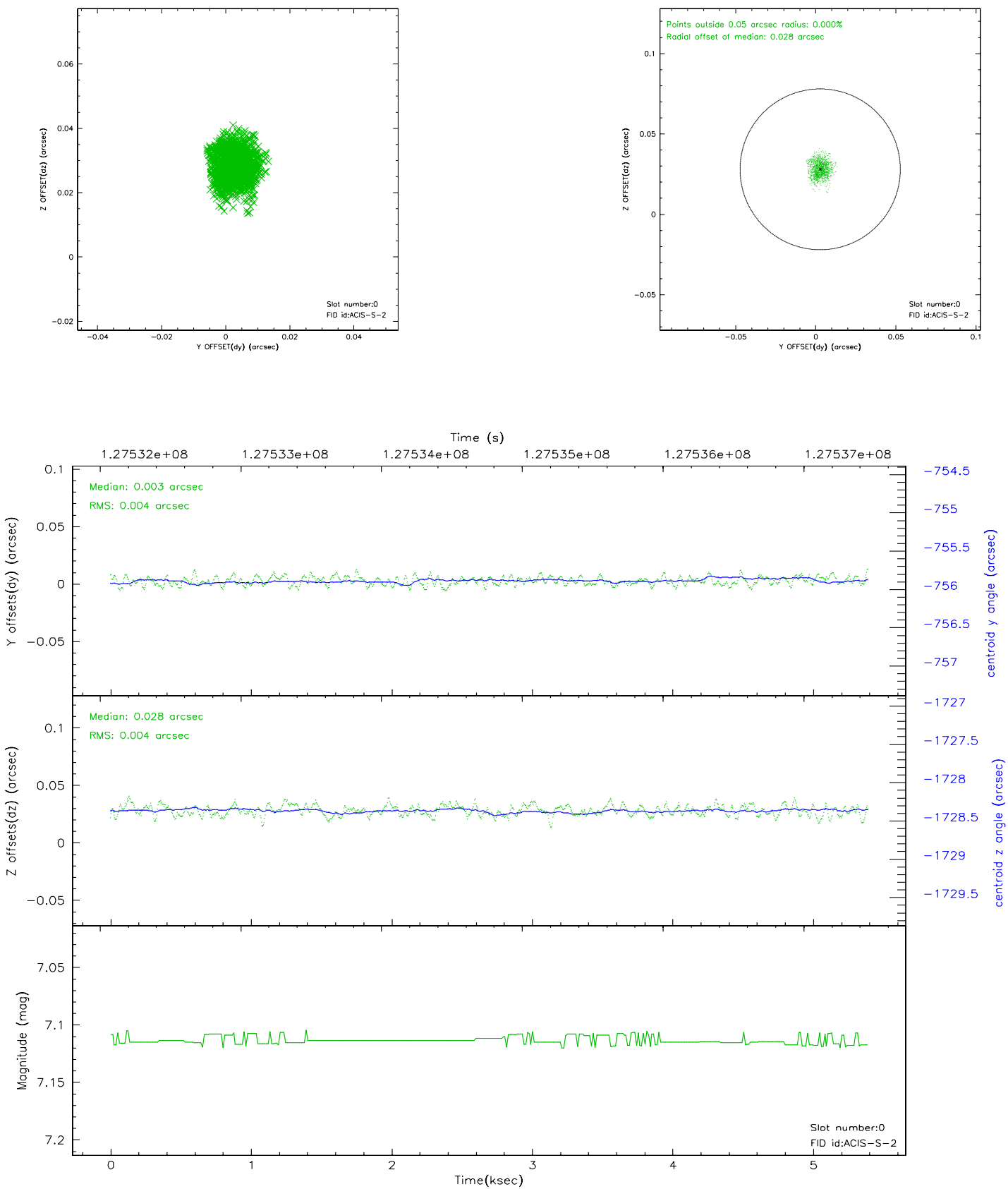


2.4.5 Slot 7

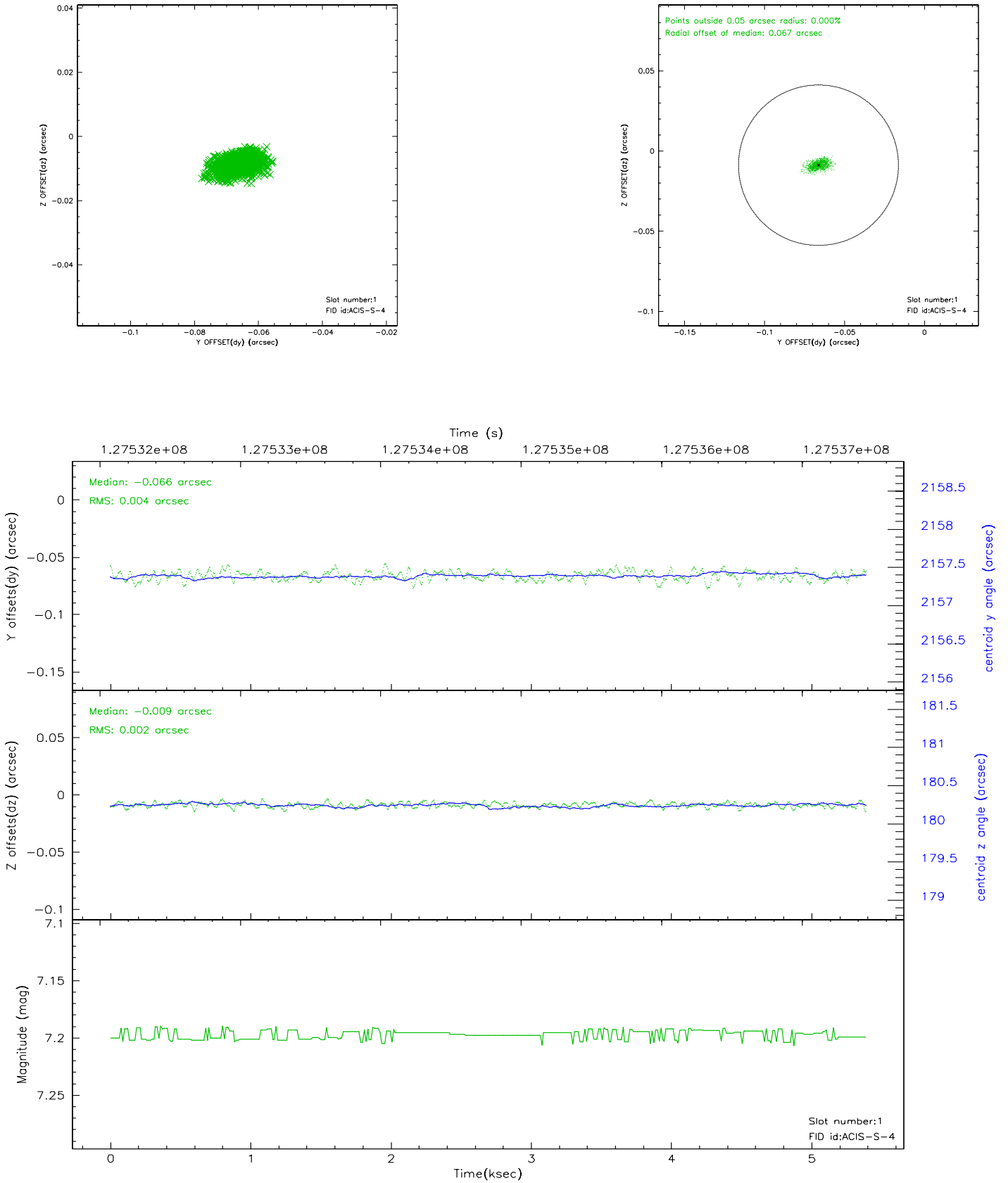


2.5 FID Slots

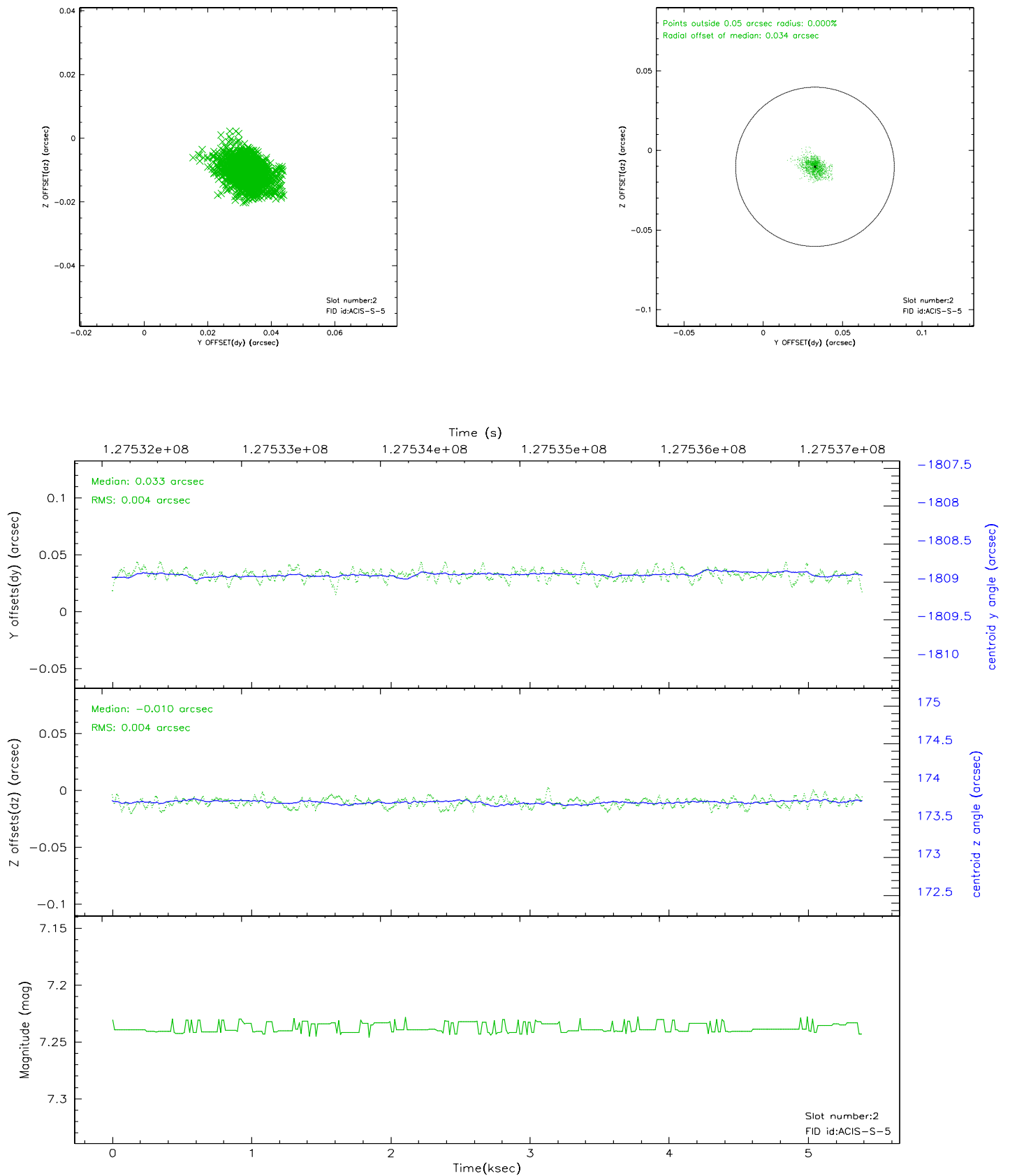
2.5.1 Slot 0



2.5.2 Slot 1



2.5.3 Slot 2



3 Point Sources

A Summary

A.1 Status

V&V Scientist	Beth Sundheim
V&V Date (YYYY-MM-DD)	2006.08.28
V&V Edition	1
V&V Disposition and Status	OK
V&V Charge Time	5.39

A.2 Comments