

V&V Reference Report

L2 ASCDS Version : 7.6.9

Observation 3081 - L2 Version 001
Chandra X-Ray Center

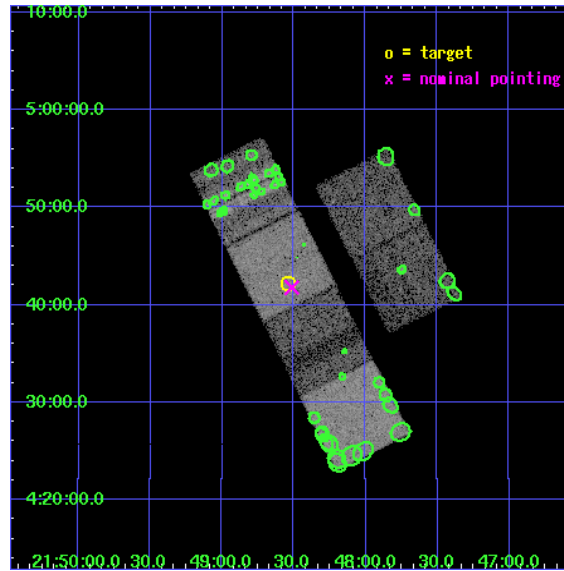
L2 Processing Date : Oct 2 2006

Contents

1	Front	2
2	OBI	3
2.1	OBI	3
2.1.1	Images	3
2.1.2	Bias	3
2.1.3	Parameters	4
2.1.4	Events	4
2.2	Compared Parameters	5
2.3	Aspect	6
2.4	Star Slots	9
2.4.1	Slot 3	9
2.4.2	Slot 4	10
2.4.3	Slot 5	11
2.4.4	Slot 6	12
2.4.5	Slot 7	13
2.5	FID Slots	14
2.5.1	Slot 0	14
2.5.2	Slot 1	15
2.5.3	Slot 2	16
3	Point Sources	17
A	Summary	18
A.1	Status	18
A.2	Comments	18

1 Front

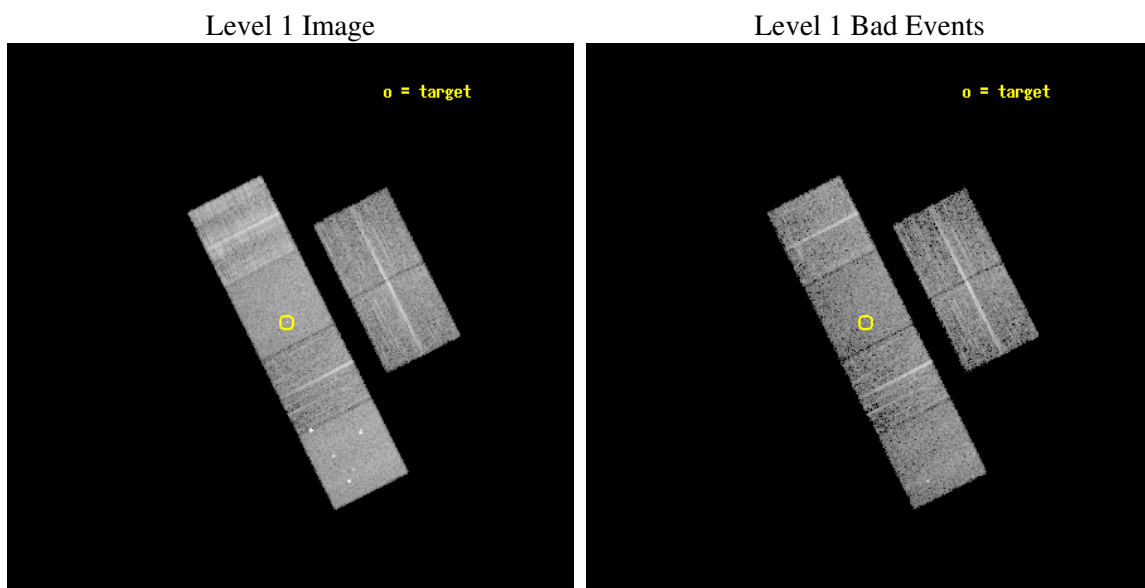
seq_num	700520
obs_id	3081
title	X-RAY WEAK BROAD-LINE QUASARS: ABSORPTION OR INTRINSIC X_RAY WEAKNESS ?
observer	Dr Guido Risaliti
object	HS 2146+0428
dtcycle	0
cycle	P
ra_targ	327.134167
dec_targ	4.704389
ra_nom	327.12834898068
dec_nom	4.696553166746
roll_nom	243.24574925764
revision	2
ontime	7612.7999716401
livetime	7516.4021145214
ontime2	7612.7999716401
ontime3	7612.7999716401
ontime5	7612.7999716401
ontime6	7612.7999716401
ontime7	7612.7999716401
ontime8	7612.7999716401
l2events	94923



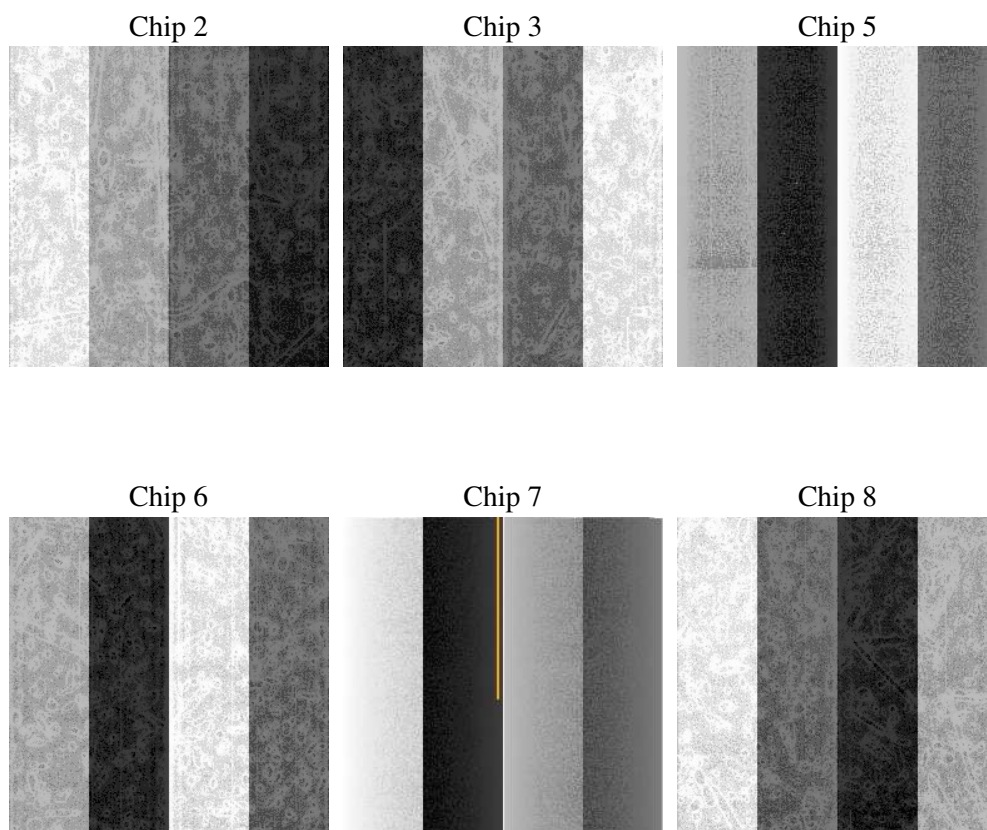
2 OBI

2.1 OBI

2.1.1 Images



2.1.2 Bias



2.1.3 Parameters

obi_num	1
ascdsver	7.6.9
caldbver	3.2.3
date	2006-10-02T23:08:01
revision	2

sched_exp_time	7600.000000
ontime	9486.4046419263
ontime2	8598.3786562979
ontime3	8634.0298470557
ontime5	9486.4046419263
ontime6	8659.9581870437
ontime7	9486.4046419263
ontime8	8695.6089489758
l1events	676301

2.1.4 Events

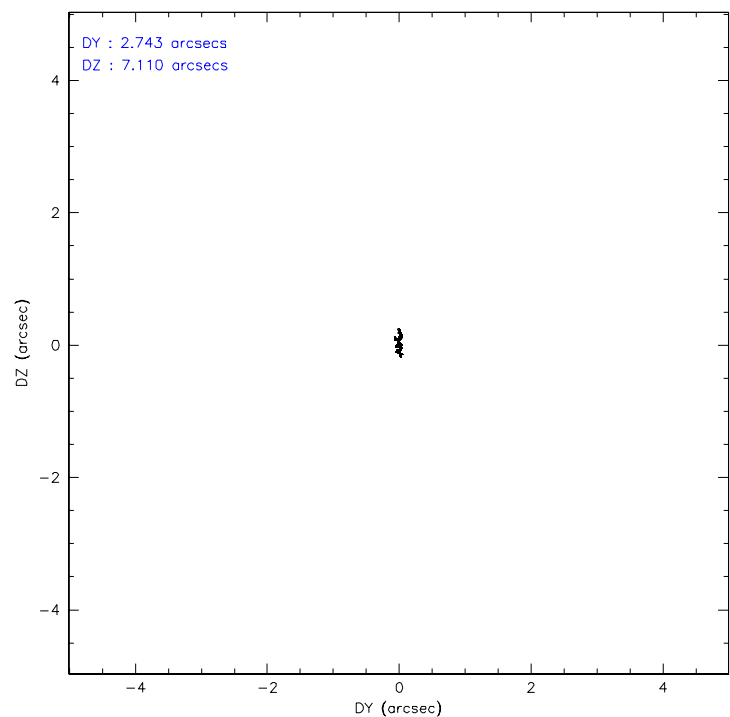
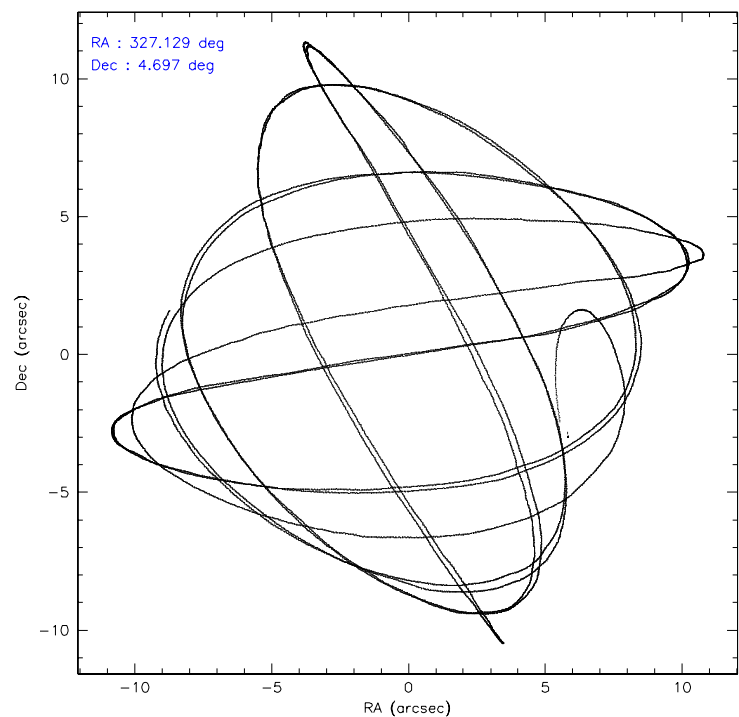
	ccd 2	ccd 3	ccd 5	ccd 6	ccd 7	ccd 8
level 1 events	86404	85121	146005	89706	142223	126842
rejected events	77623	76214	112767	80390	116523	89718
rejected %	89%	89%	77%	89%	81%	70%

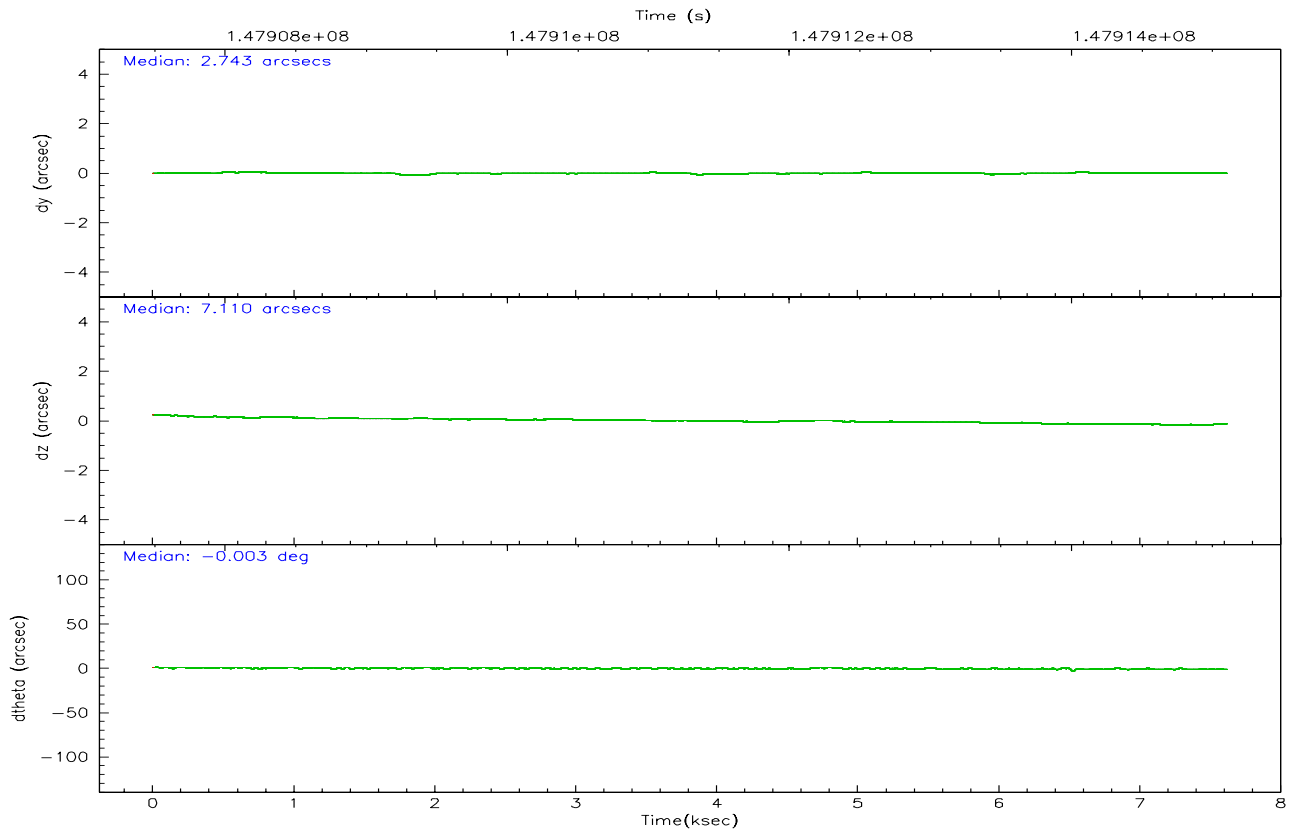
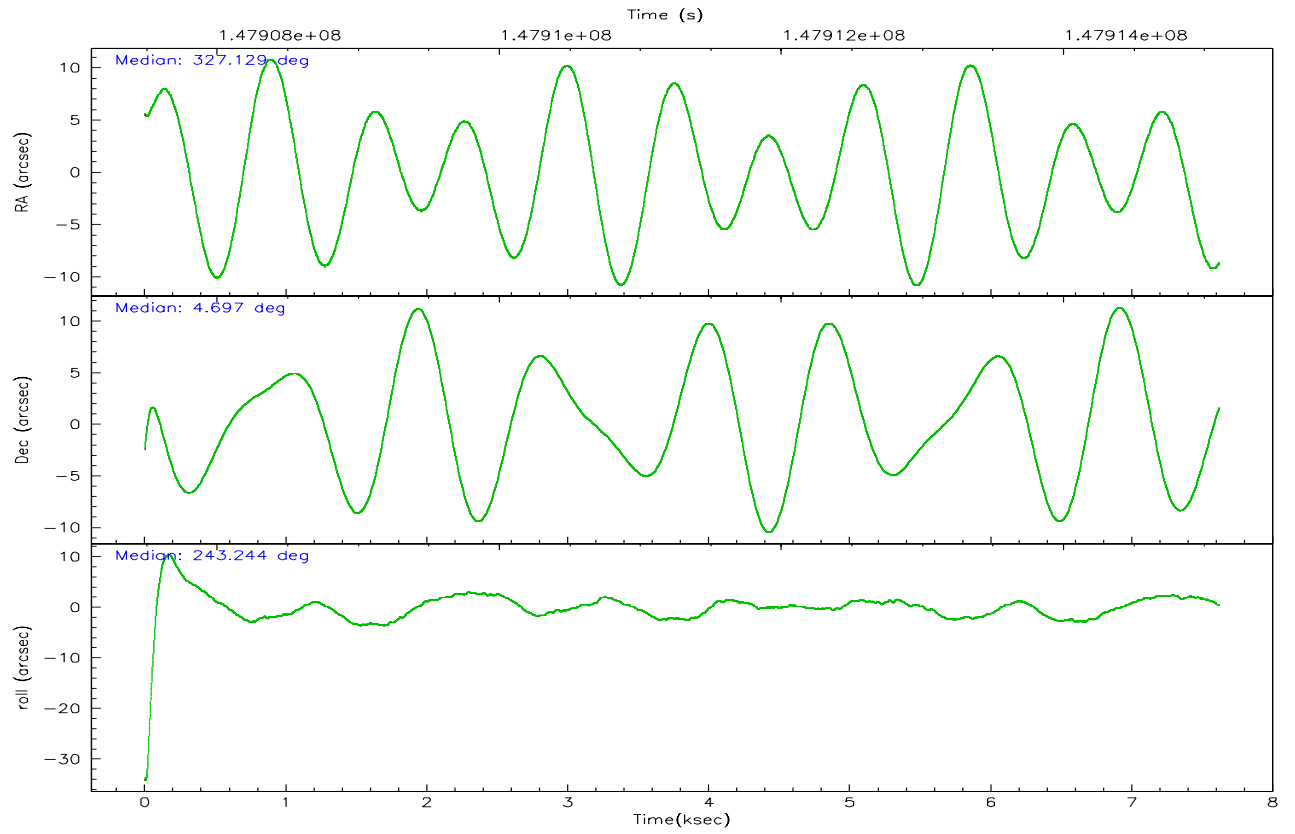
	ccd 2	ccd 3	ccd 5	ccd 6	ccd 7	ccd 8
grade 0 events	19499	19827	10893	20688	13393	31906
	22%	23%	7%	23%	9%	25%
grade 1 events	117	111	179	114	68	215
	0%	0%	0%	0%	0%	0%
grade 2 events	6576	7157	38337	7803	26258	10964
	7%	8%	26%	8%	18%	8%
grade 3 events	2296	2439	3309	2549	6331	8402
	2%	2%	2%	2%	4%	6%
grade 4 events	2444	2529	2985	2380	6219	7799
	2%	2%	2%	2%	4%	6%
grade 5 events	2112	2308	4841	2495	5560	3387
	2%	2%	3%	2%	3%	2%
grade 6 events	5430	5613	37828	6470	39767	10729
	6%	6%	25%	7%	27%	8%
grade 7 events	47930	45137	47633	47207	44627	53440
	55%	53%	32%	52%	31%	42%

2.2 Compared Parameters

Parameter	Planned	Actual	Parameter	Planned	Actual
Instrument	ACIS	ACIS	Obspar format version number	6	6
Detector	ACIS-235678	ACIS-235678	Obspar file type	PREDICTED	ACTUAL
Grating	NONE	NONE	Obspar update status	NONE	UPDATED
Data mode	FAINT	FAINT	Number of optional ACIS chips dropped	0	0
Observation mode	POINTING	POINTING	On-chip summing requested	N	N
Pointing RA	327.126429	327.128348980681	Subarray requested	NONE	NONE
Pointing Dec	4.723810	4.696553166745998	Alternating exposures requested	N	N
Pointing Roll	243.089346	243.2457492576417	Primary exposure time	0.000000	3.2
SIM focus pos (mm)	-0.684267	-0.6828225247311905			
SIM defocus (mm)	0	0.001444936568705701			
SIM translation stage pos (mm)	-190.132523	-190.1400660498719			
SIM translation stage offset (mm)	0	0.00754346686406393			
Observation start time	147907509.184000	147905623.49493			
Observation start date	2002-09-08T21:24:05	2002-09-08T20:53:43			
Observation end time	147915109.184000	147915886.30785			
Observation end date	2002-09-08T23:30:45	2002-09-08T23:44:46			
Read mode	TIMED	TIMED			

2.3 Aspect



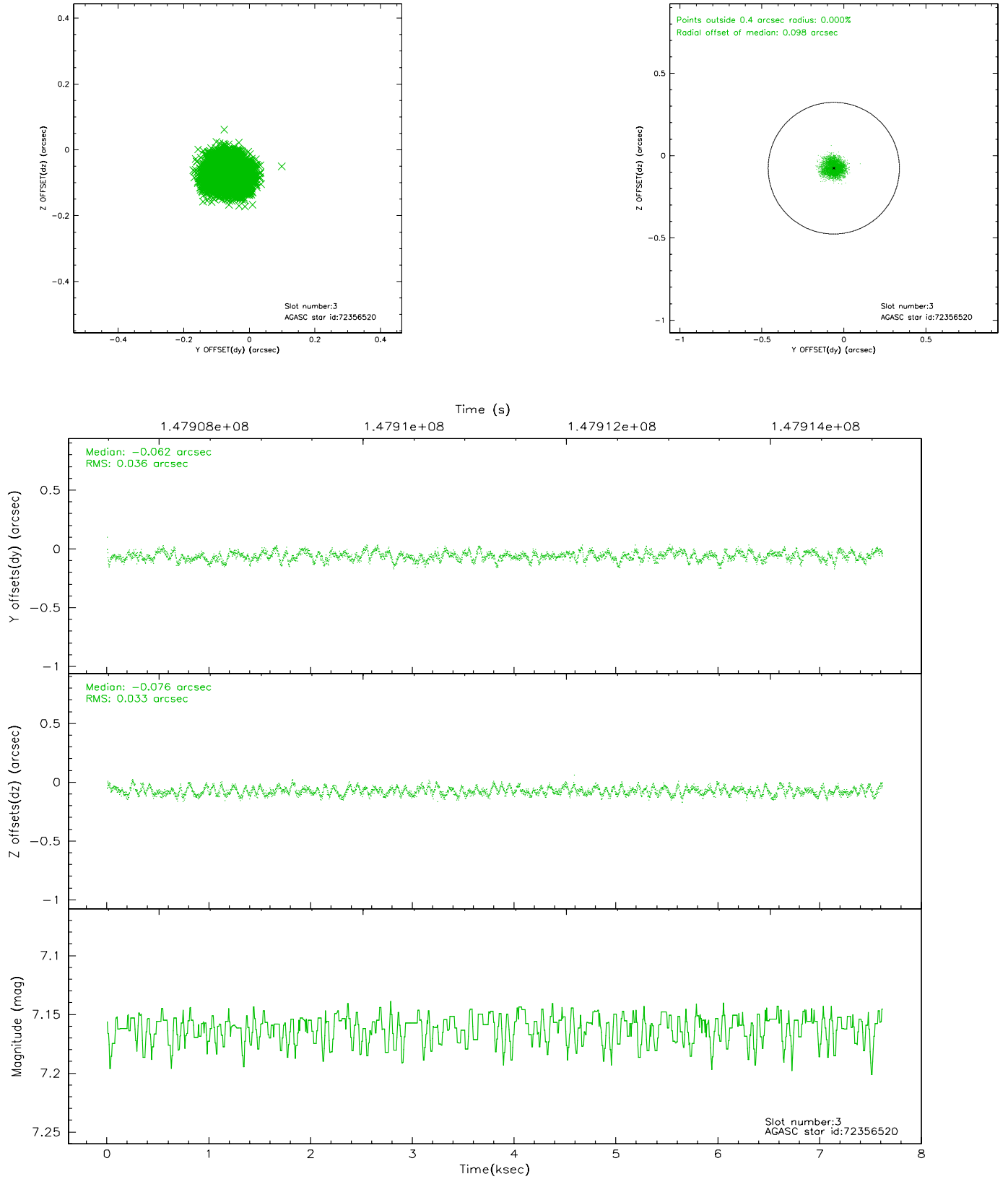


Slot Statistics

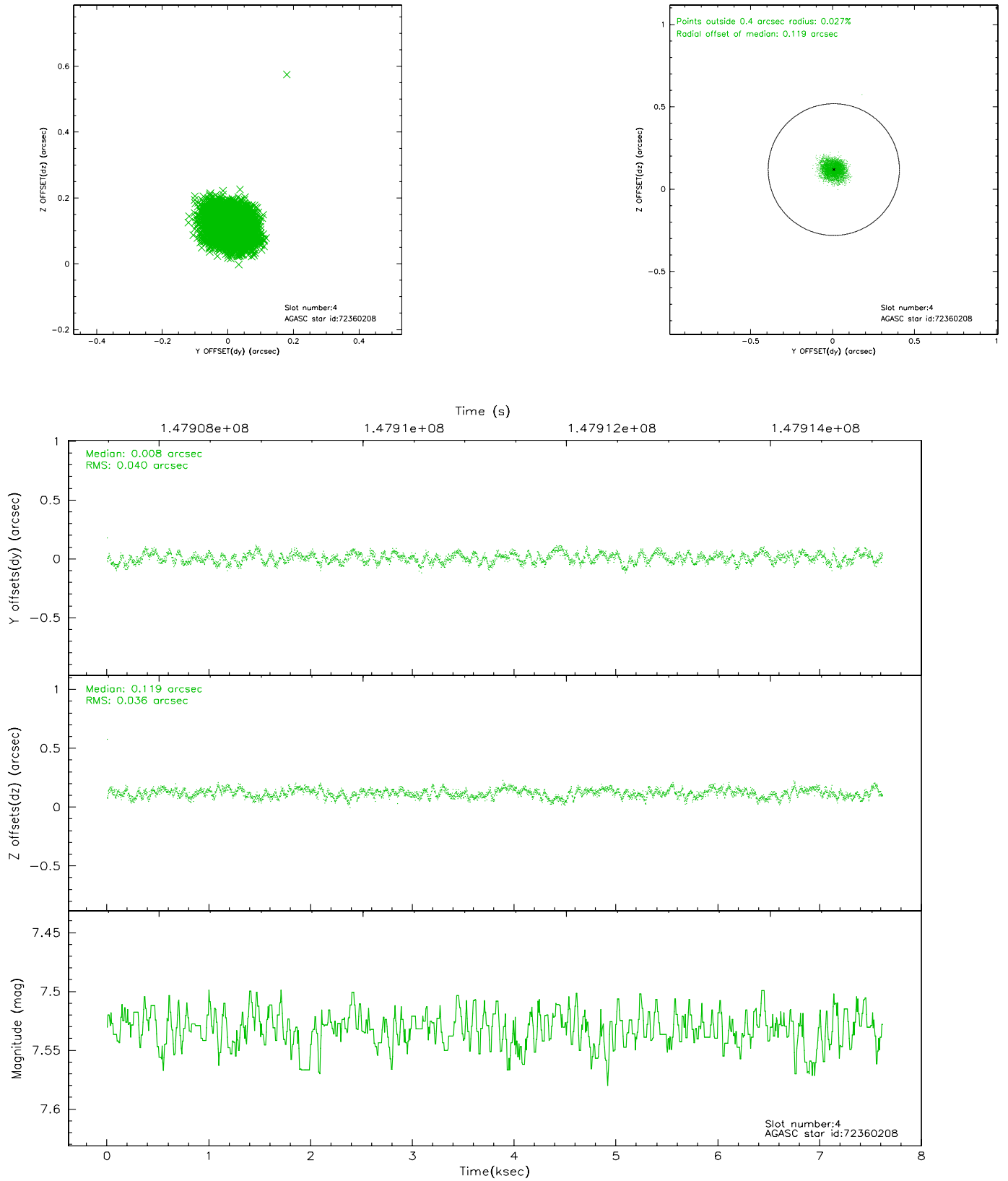
slot	status	id	mag	n_pts	med_dy	med_dz	dr1	dr2	ra	dec	mean_y	mean_z
0	FID	ACIS-S-3	7.35	1858	-0.090	-0.043	0.008	0.013	0.000000	0.000000	57.70	-1857.39
1	FID	ACIS-S-4	7.20	1858	-0.020	0.068	0.006	0.011	0.000000	0.000000	2157.98	179.39
2	FID	ACIS-S-5	7.24	1858	0.081	-0.015	0.006	0.010	0.000000	0.000000	-1807.18	173.96
3	GUIDE	72356520	7.16	3716	-0.062	-0.076	0.053	0.080	327.463585	5.212996	-2117.57	280.06
4	GUIDE	72360208	7.53	3715	0.008	0.119	0.058	0.090	326.793072	4.402962	1571.06	-544.56
5	GUIDE	72356496	8.89	3713	0.075	-0.142	0.060	0.097	327.114769	4.395959	1072.18	496.12
6	GUIDE	72358272	8.97	3716	0.033	0.060	0.080	0.124	327.447324	4.178563	1229.23	1915.44
7	GUIDE	72356680	9.29	3714	-0.055	0.042	0.082	0.133	327.043792	5.459679	-2227.66	-1463.16

2.4 Star Slots

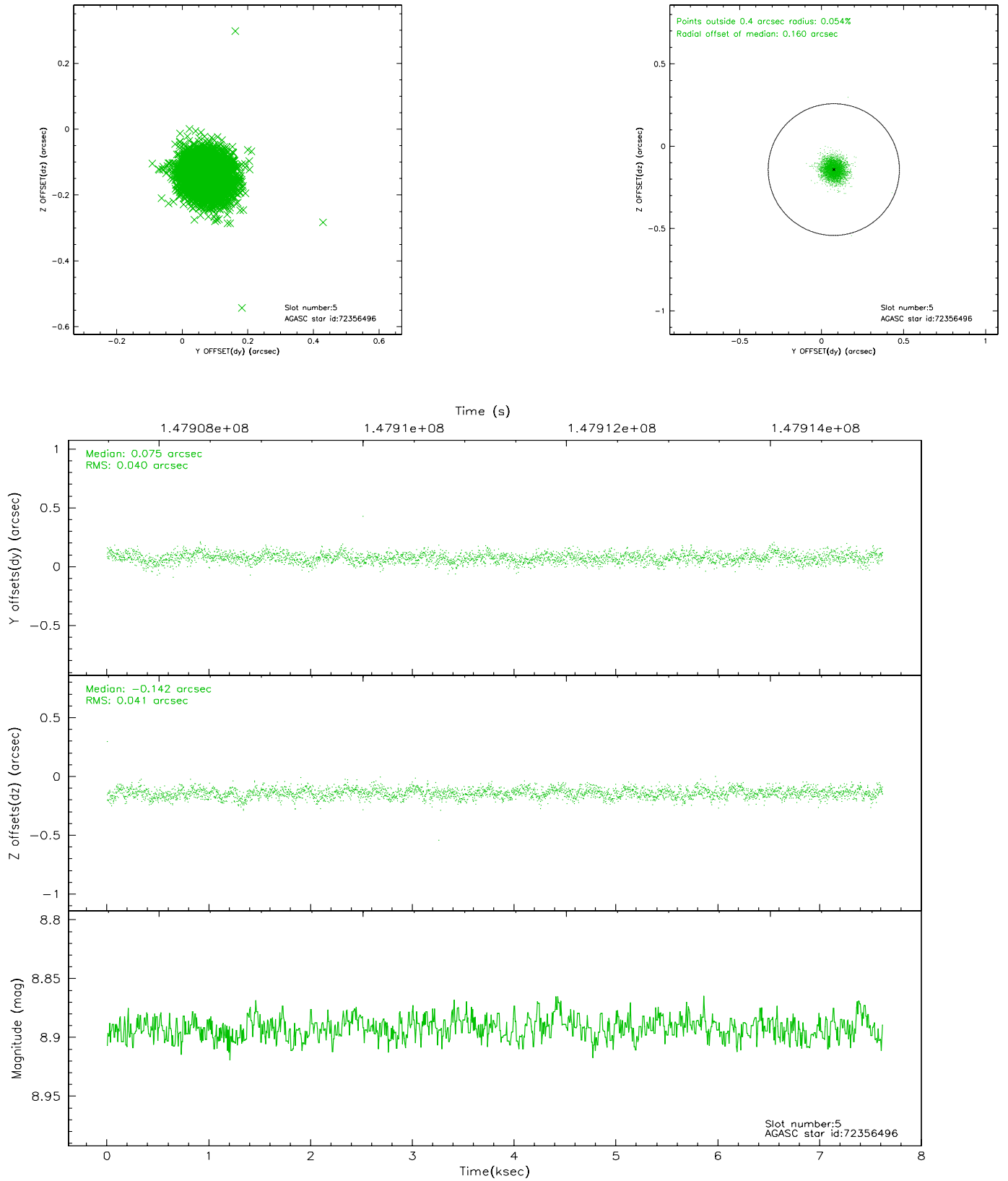
2.4.1 Slot 3



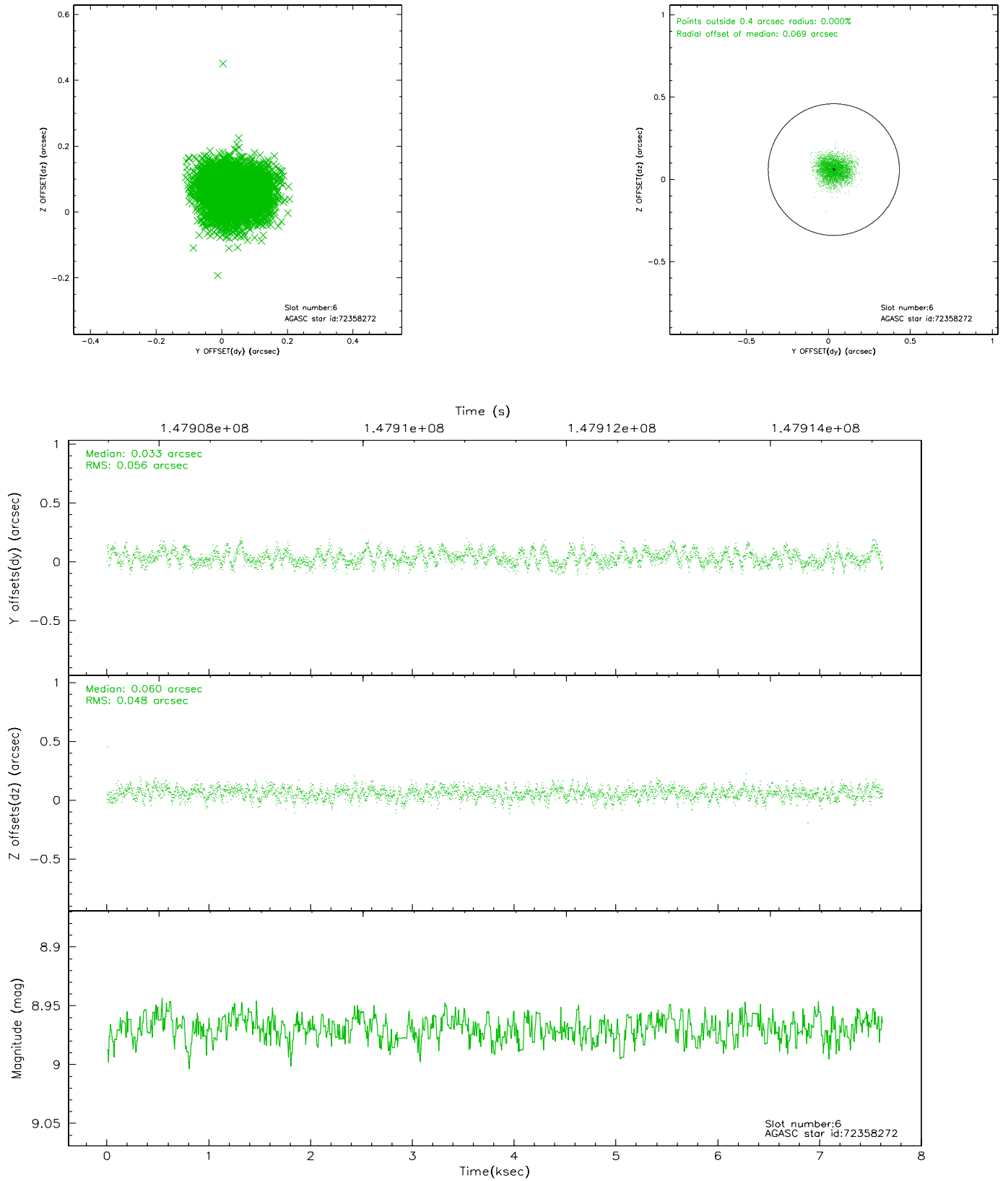
2.4.2 Slot 4



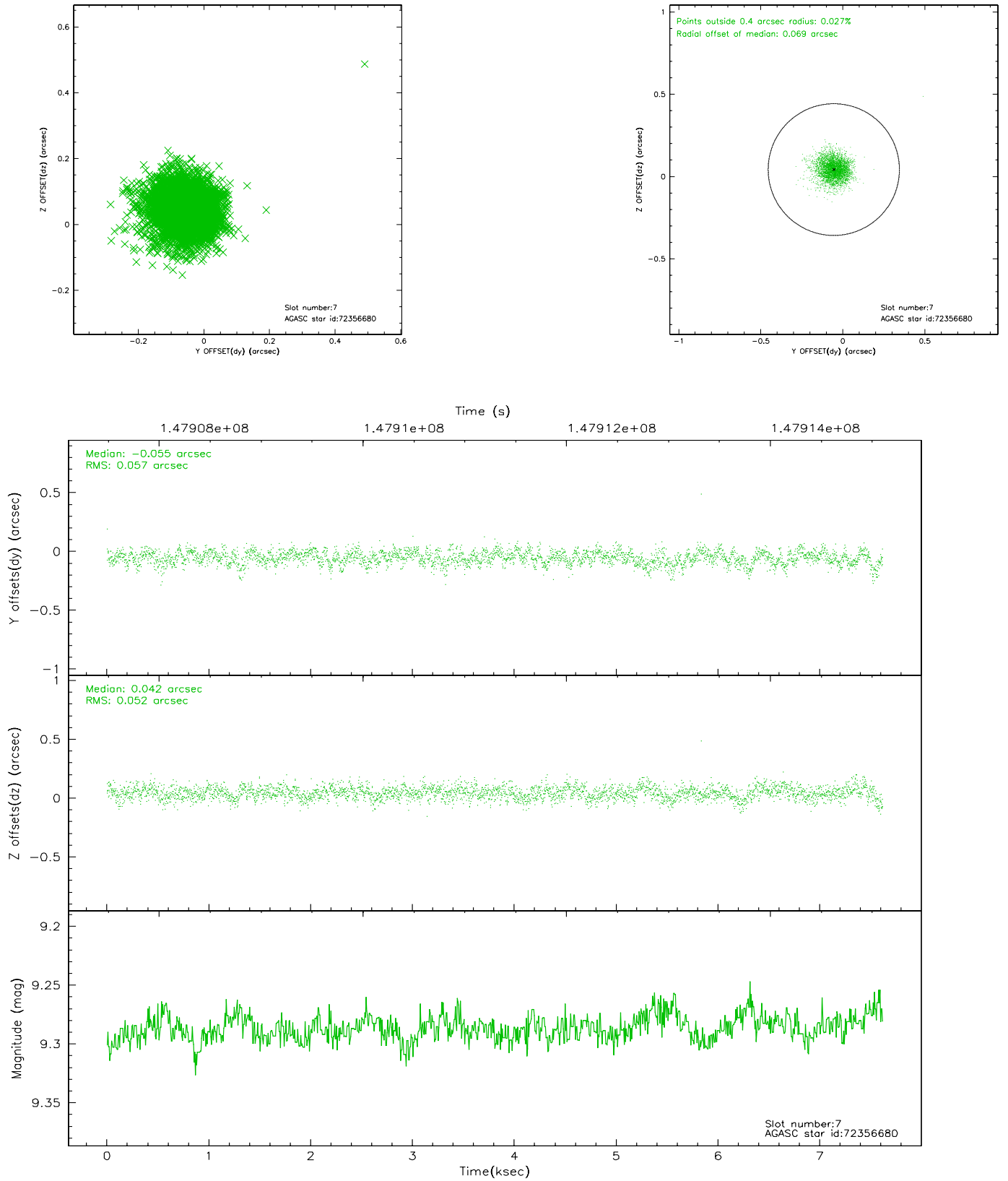
2.4.3 Slot 5



2.4.4 Slot 6

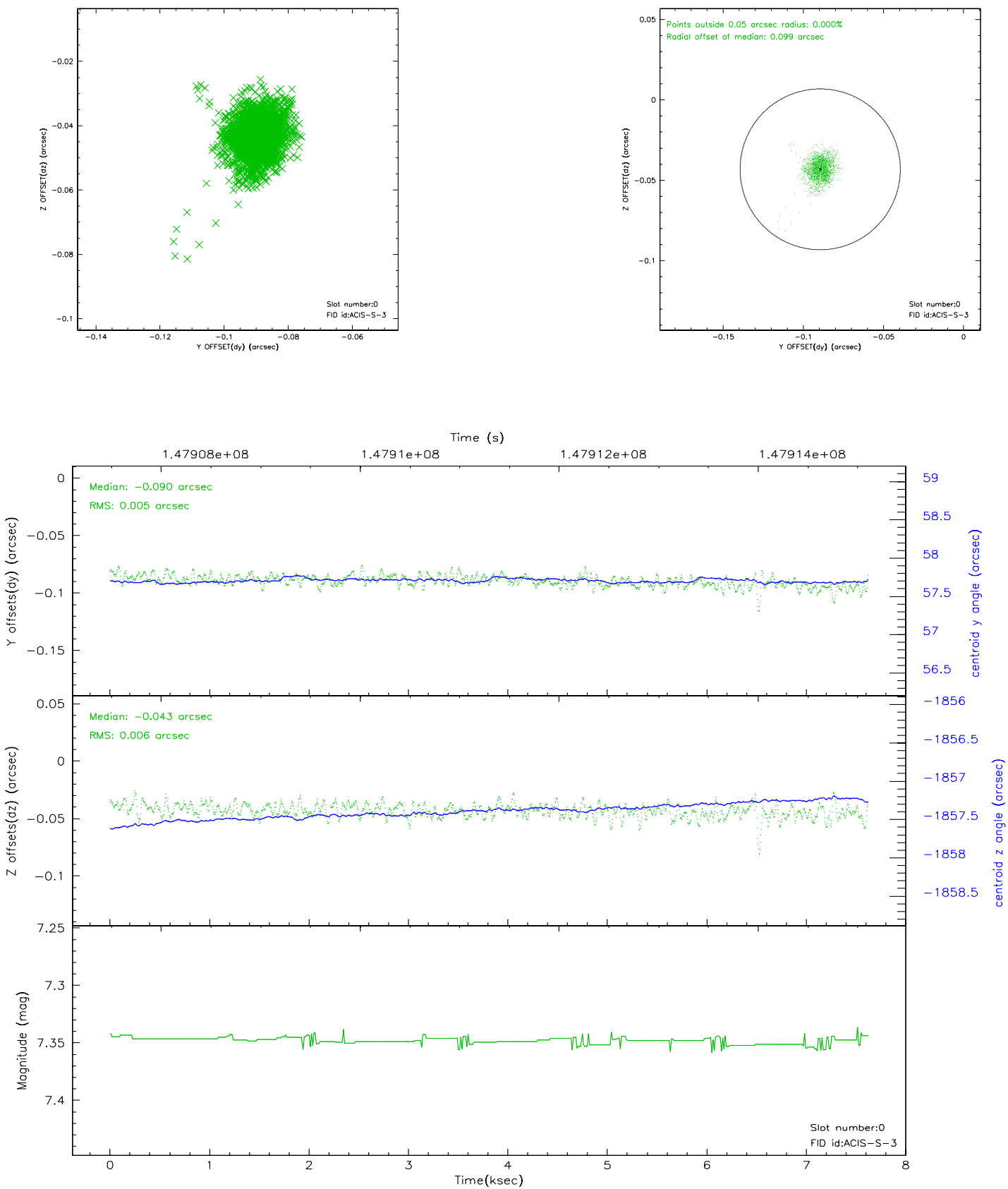


2.4.5 Slot 7

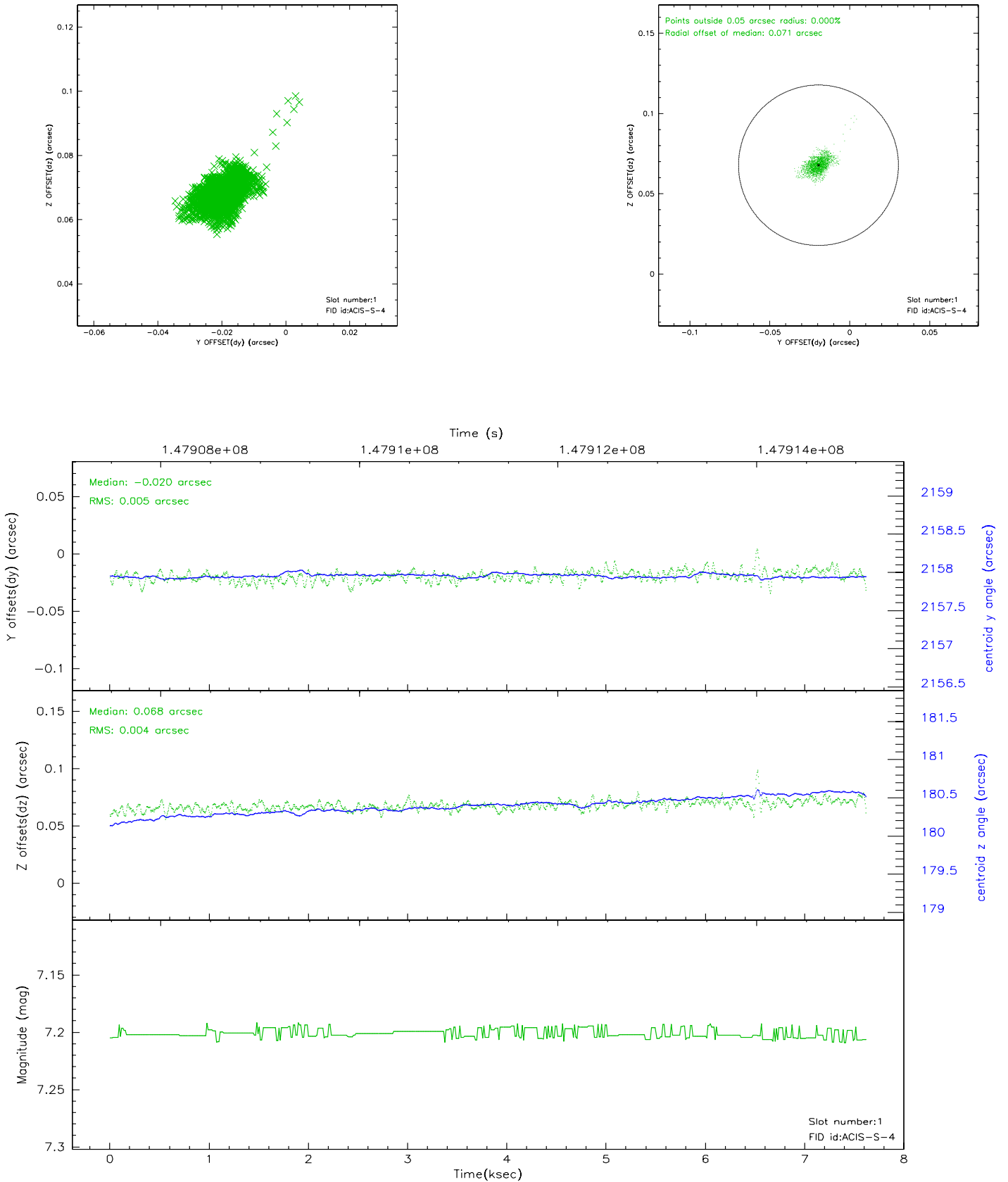


2.5 FID Slots

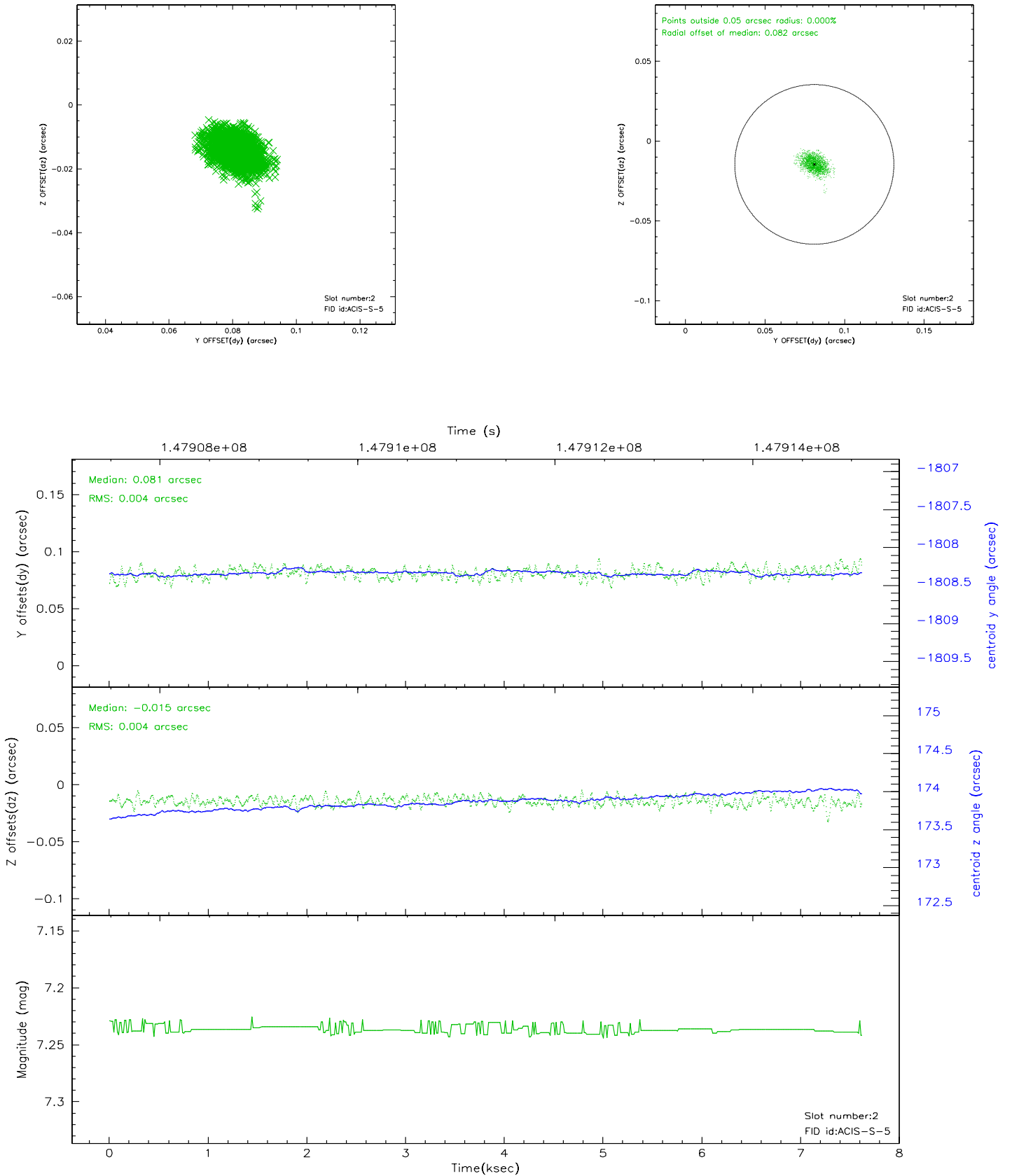
2.5.1 Slot 0



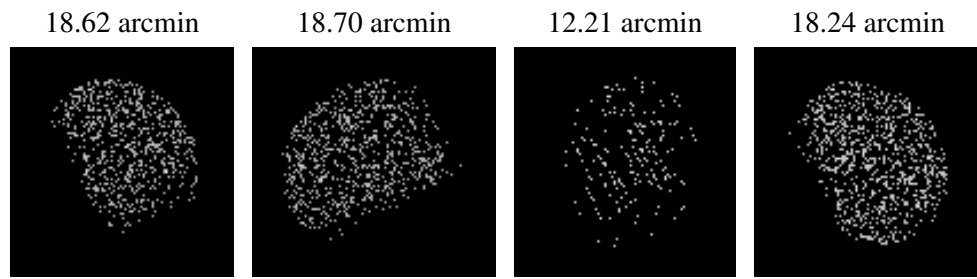
2.5.2 Slot 1



2.5.3 Slot 2



3 Point Sources



A Summary

A.1 Status

V&V Scientist	Beth Sundheim
V&V Date (YYYY-MM-DD)	2006.10.03
V&V Edition	1
V&V Disposition and Status	OK
V&V Charge Time	7.612

A.2 Comments