

V&V Reference Report

L2 ASCDS Version : 8.4.5

Observation 3079 - L2 Version 3
Chandra X-Ray Center

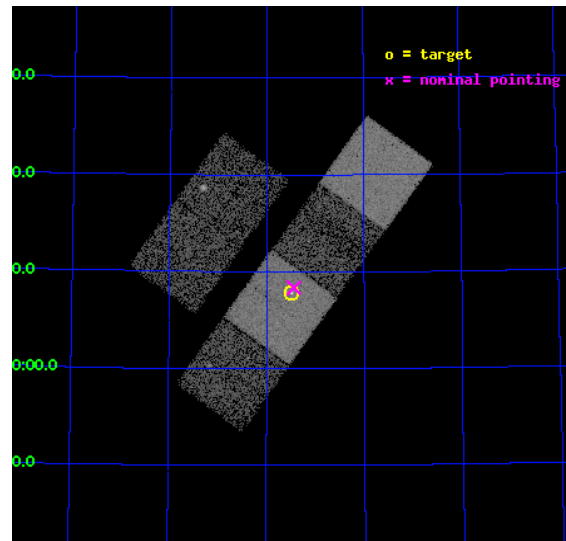
L2 Processing Date : Oct 8 2012

Contents

1	Front	2
2	OBI	3
2.1	OBI	3
2.1.1	Images	3
2.1.2	Bias	3
2.1.3	Parameters	4
2.1.4	Events	4
2.2	Compared Parameters	5
2.3	Aspect	6
2.4	Star Slots	9
2.4.1	Slot 3	9
2.4.2	Slot 4	10
2.4.3	Slot 5	11
2.4.4	Slot 6	12
2.4.5	Slot 7	13
2.5	FID Slots	14
2.5.1	Slot 0	14
2.5.2	Slot 1	15
2.5.3	Slot 2	16
A	Summary	17
A.1	Status	17
A.2	Comments	17

1 Front

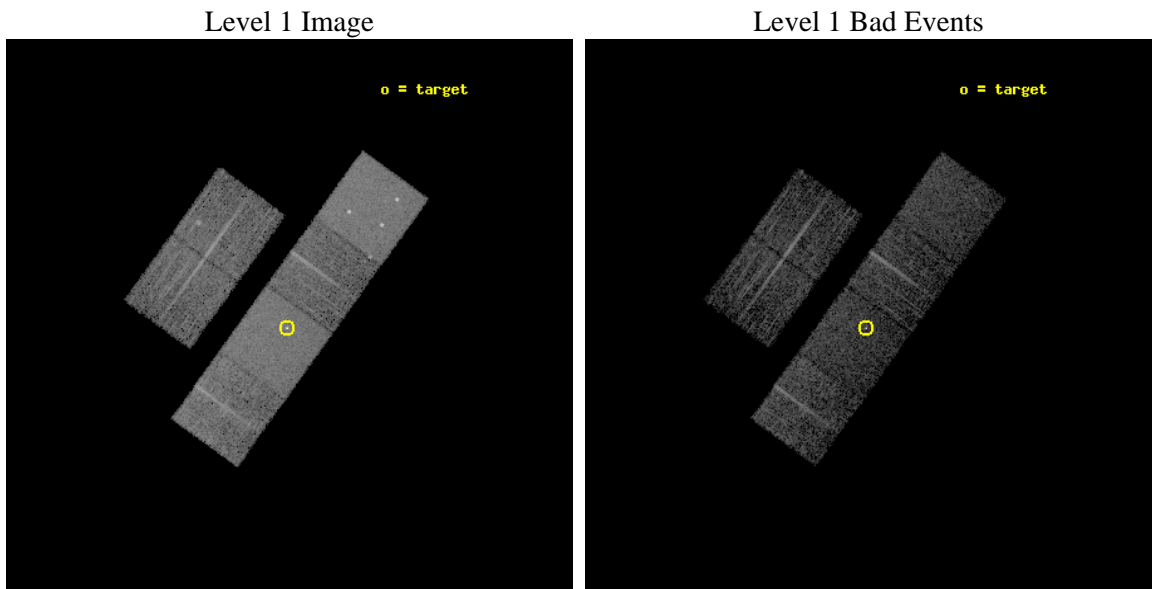
seq_num	700518	Sequence number
obs_id	3079	Observation id
title	X-RAY WEAK BROAD-LINE QUASARS: ABSORPTION OR INTRINSIC X_RAY WEAKNESS ?	Proposal title
observer	Dr Guido Risaliti	Principal investigator
object	HS 1939+7000	Source name
dtcycle	0	
cycle	P	events from which exps? Prim/Second/Both
ra_targ	294.872917	Observer's specified target RA [deg]
dec_targ	70.130278	Observer's specified target Dec [deg]
ra_nom	294.860432456	Nominal RA [deg]
dec_nom	70.139114328335	Nominal Dec [deg]
roll_nom	125.78467388847	Nominal Roll [deg]
revision	3	Processing version of data
ontime	4971.6632443666	Sum of GTIs [s]
livetime	4908.7090507903	Livetime [s]
ontime2	4971.7042843699	Sum of GTIs [s]
ontime3	4971.5401243567	Sum of GTIs [s]
ontime5	4971.6222043633	Sum of GTIs [s]
ontime6	4971.58116436	Sum of GTIs [s]
ontime7	4971.6632443666	Sum of GTIs [s]
ontime8	4968.2581042349	Sum of GTIs [s]
l2events	74405	Number of level 2 events



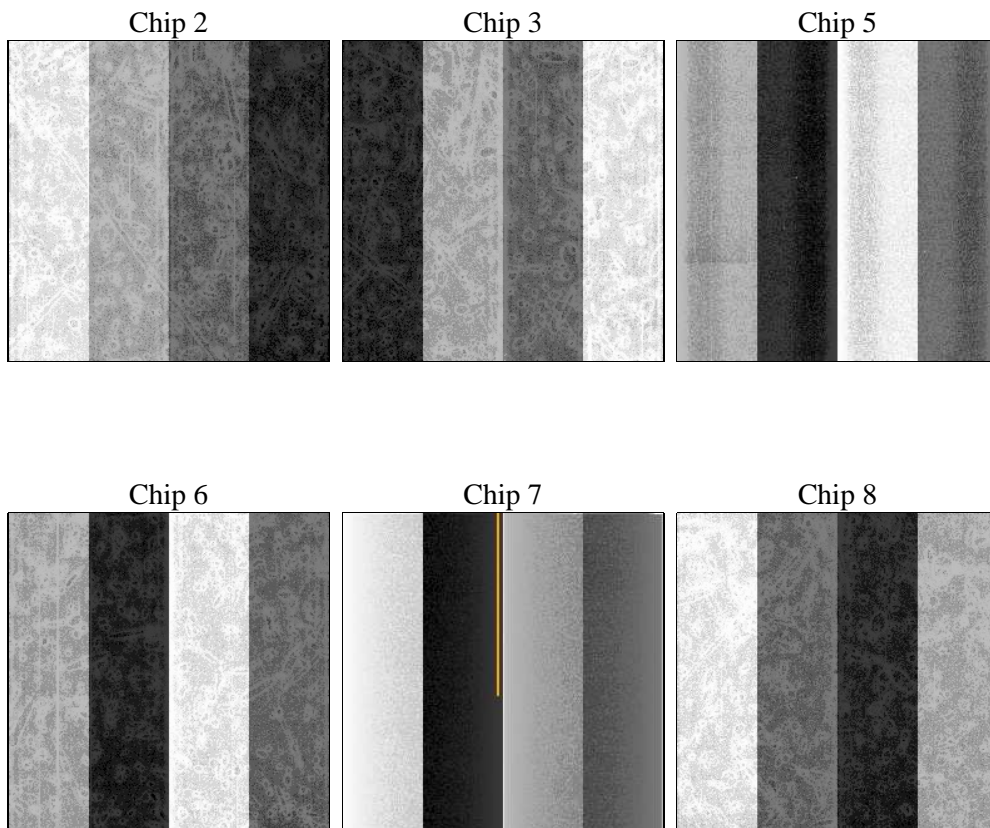
2 OBI

2.1 OBI

2.1.1 Images



2.1.2 Bias



2.1.3 Parameters

obi_num	0	Obi number	sched_exp_time	5007.979000	[s] Scheduled observation exposure time
ascdsver	8.4.5	Processing system revision	ontime	4971.6632443666	Sum of GTIs [s]
caldsver	4.5.2	 	ontime2	4971.7042843699	Sum of GTIs [s]
date	2012-10-08T05:34:42	Date and time of file creation	ontime3	4971.5401243567	Sum of GTIs [s]
revision	3	Processing version of data	ontime5	4971.6222043633	Sum of GTIs [s]
			ontime6	4971.58116436	Sum of GTIs [s]
			ontime7	4971.6632443666	Sum of GTIs [s]
			ontime8	4968.2581042349	Sum of GTIs [s]
			l1events	244423	Number of level 1 events

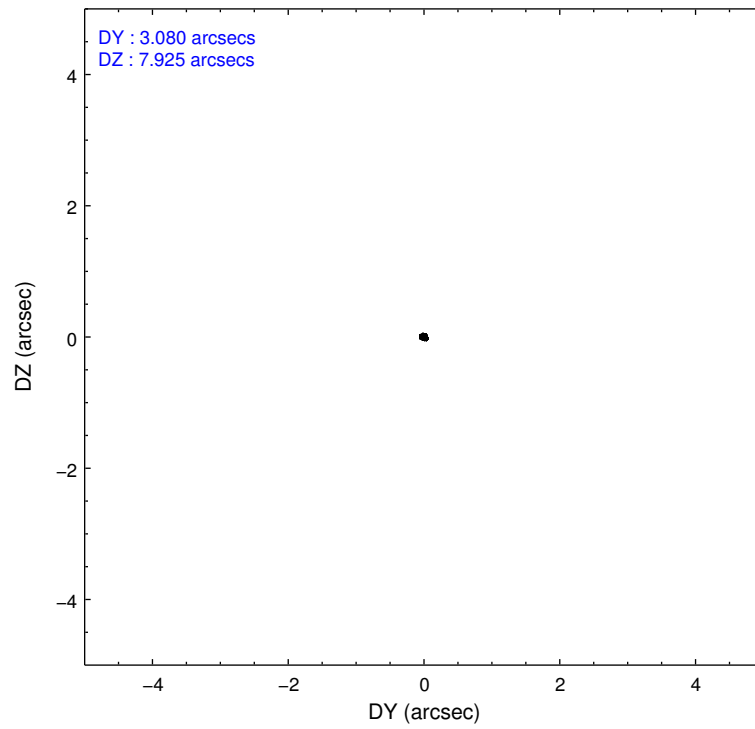
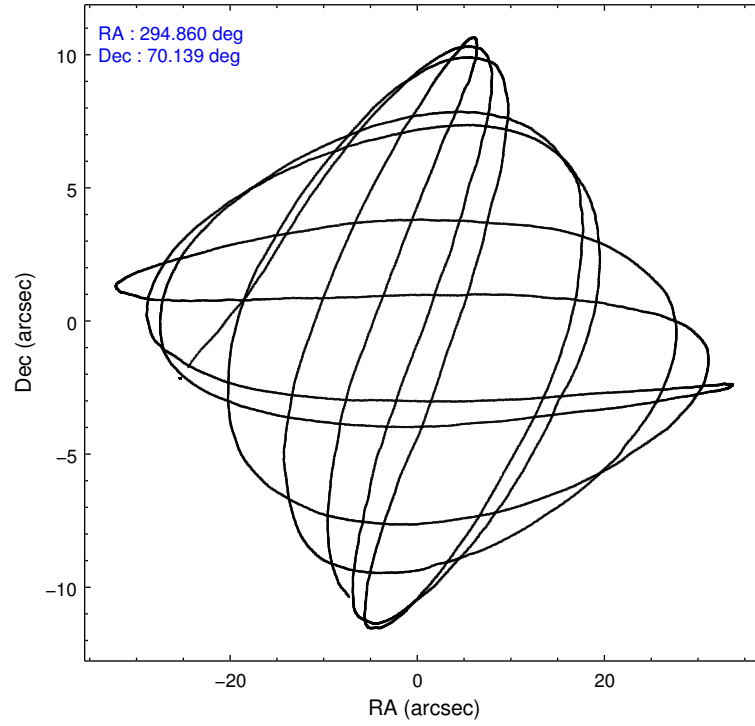
2.1.4 Events

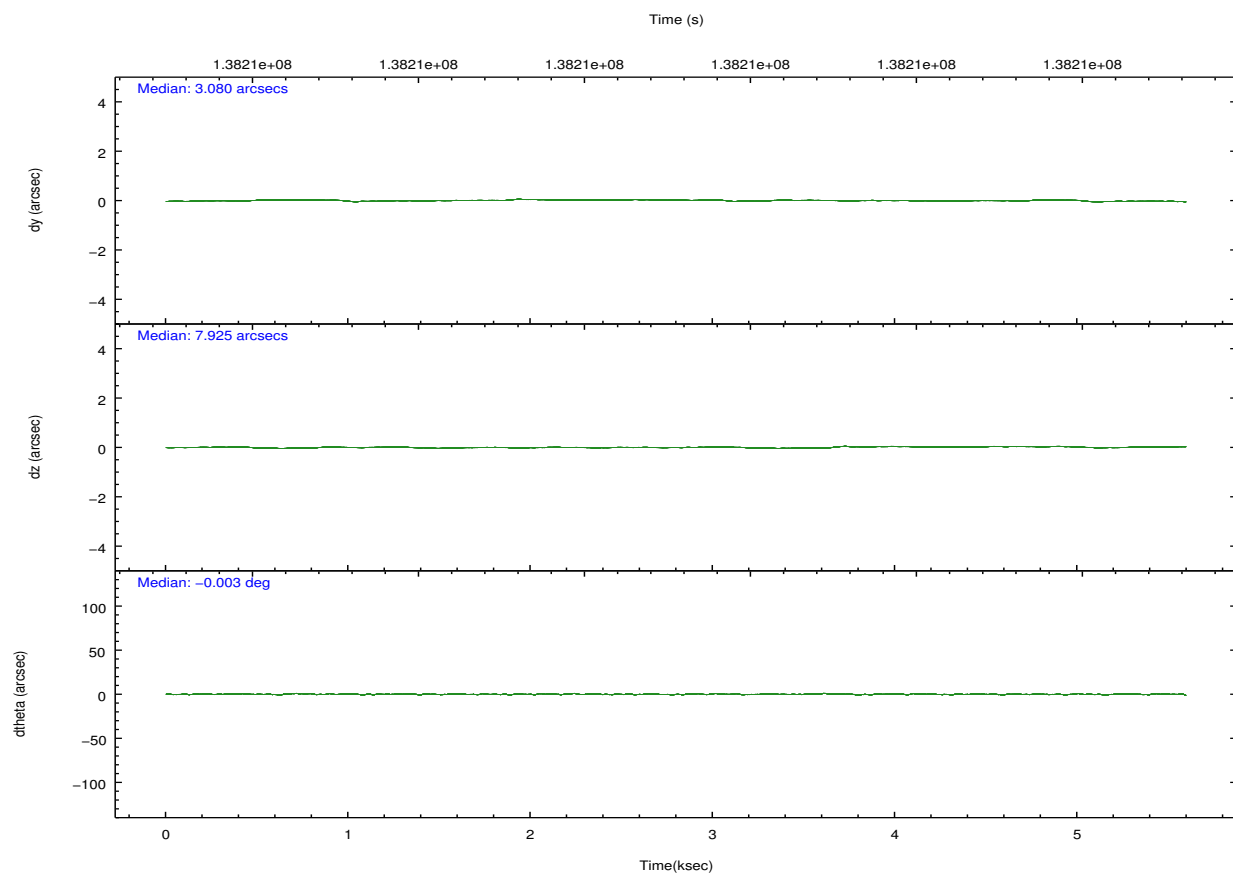
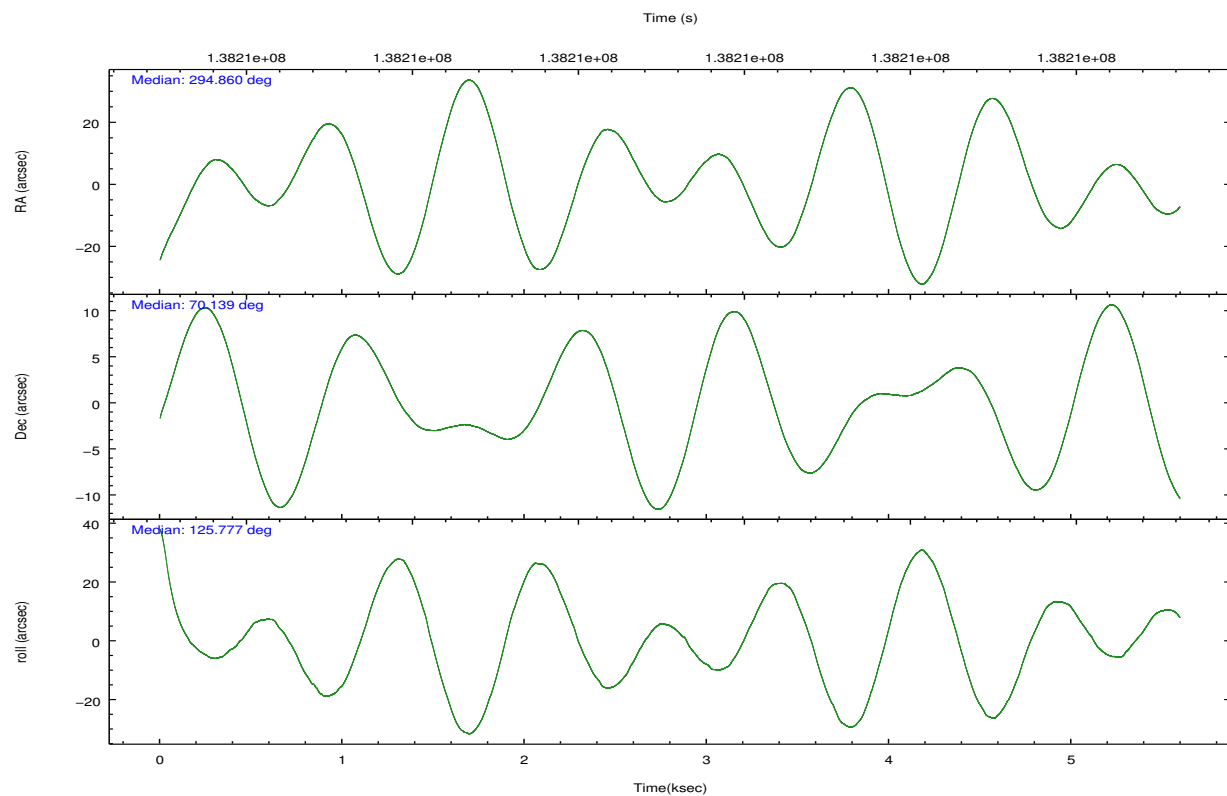
	ccd 2	ccd 3	ccd 5	ccd 6	ccd 7	ccd 8		ccd 2	ccd 3	ccd 5	ccd 6	ccd 7	ccd 8
level 1 events	32290	31322	56716	31932	50894	41269	grade 0 events	3017	2575	5898	2874	2873	4277
rejected events	26612	26162	24726	26150	24272	30362		9%	8%	10%	9%	5%	10%
rejected %	82%	83%	43%	81%	47%	73%	grade 1 events	19	22	157	34	89	18
								0%	0%	0%	0%	0%	0%
							grade 2 events	1163	1051	8828	1205	5077	2259
								3%	3%	15%	3%	9%	5%
							grade 3 events	344	370	1550	406	2314	1014
								1%	1%	2%	1%	4%	2%
							grade 4 events	394	379	1469	445	2222	1005
								1%	1%	2%	1%	4%	2%
							grade 5 events	1044	1271	3481	1304	4130	1655
								3%	4%	6%	4%	8%	4%
							grade 6 events	762	787	14266	856	14149	2356
								2%	2%	25%	2%	27%	5%
							grade 7 events	25547	24867	21067	24808	20040	28685
								79%	79%	37%	77%	39%	69%

2.2 Compared Parameters

Parameter	Planned	Actual	Parameter	Planned	Actual
Instrument	ACIS	ACIS	Obspar format version number	7	7
Detector	ACIS-235678	ACIS-235678	Obspar file type	PREDICTED	ACTUAL
Grating	NONE	NONE	Obspar update status	NONE	UPDATED
Data mode	FAINT	FAINT	Number of optional ACIS chips dropped	0	0
Observation mode	POINTING	POINTING	On-chip summing requested	N	N
[deg] Pointing RA	294.934079	294.8604324560033	Subarray requested	NONE	NONE
[deg] Pointing Dec	70.128132	70.139114328335	Alternating exposures requested	N	N
[deg] Pointing Roll	125.558756	125.7846738884705	[s] Primary exposure time	0.000000	3.2
[mm] SIM focus pos	-0.684267	-0.6828225247311905			
[mm] SIM defocus	0	0.001444936568705701			
[mm] SIM translation stage pos	-190.132523	-190.1400660498719			
[mm] SIM translation stage offset	0	0.00754346686406393			
[s] Observation start time (MET)	138209344.184000	138208179.58429			
Observation start date	2002-05-19T15:28:00	2002-05-19T15:09:39			
[s] Observation end time (MET)	138214351.184000	138214666.29706			
Observation end date	2002-05-19T16:51:27	2002-05-19T16:57:46			
Read mode	TIMED	TIMED			

2.3 Aspect



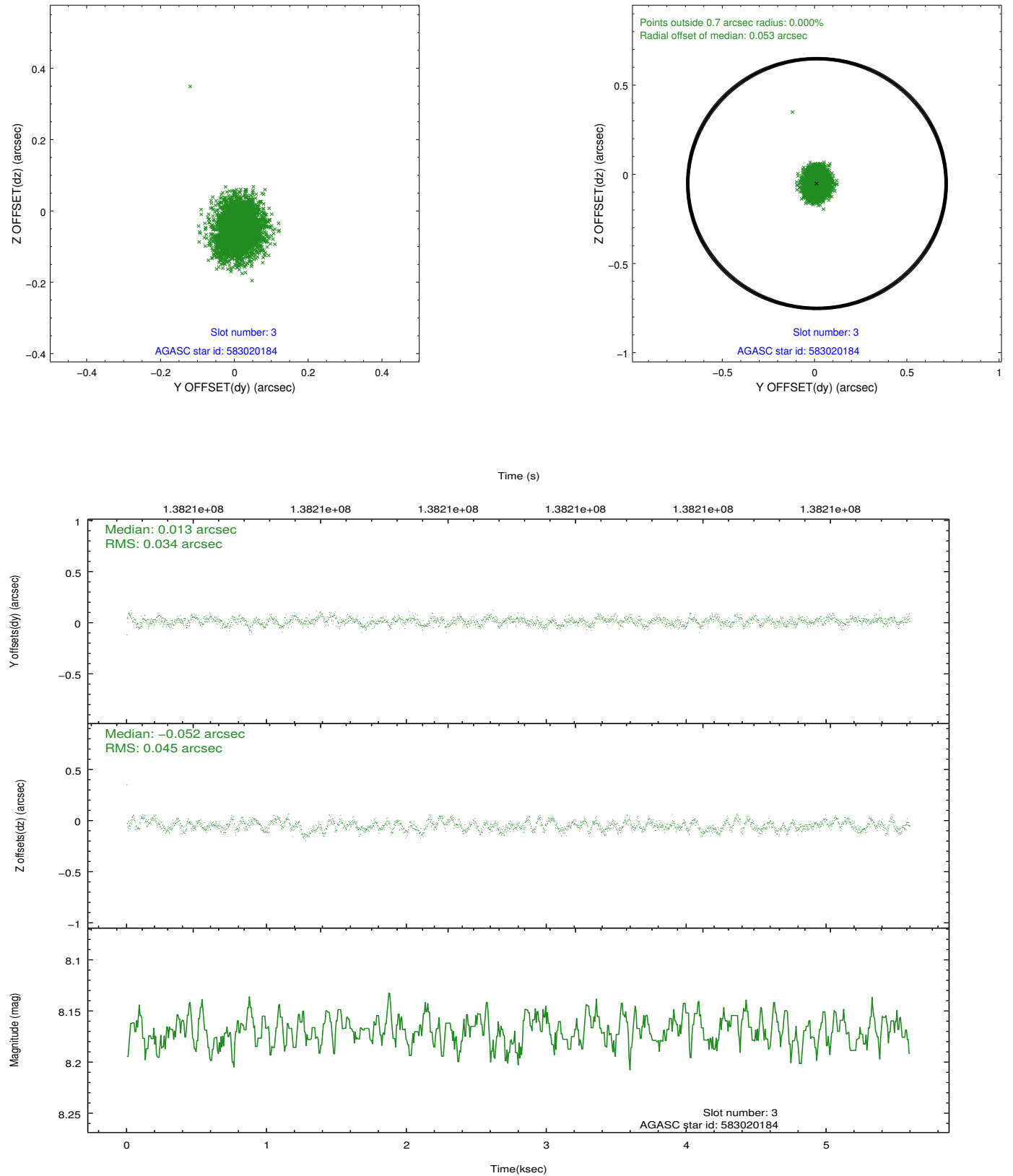


Slot Statistics

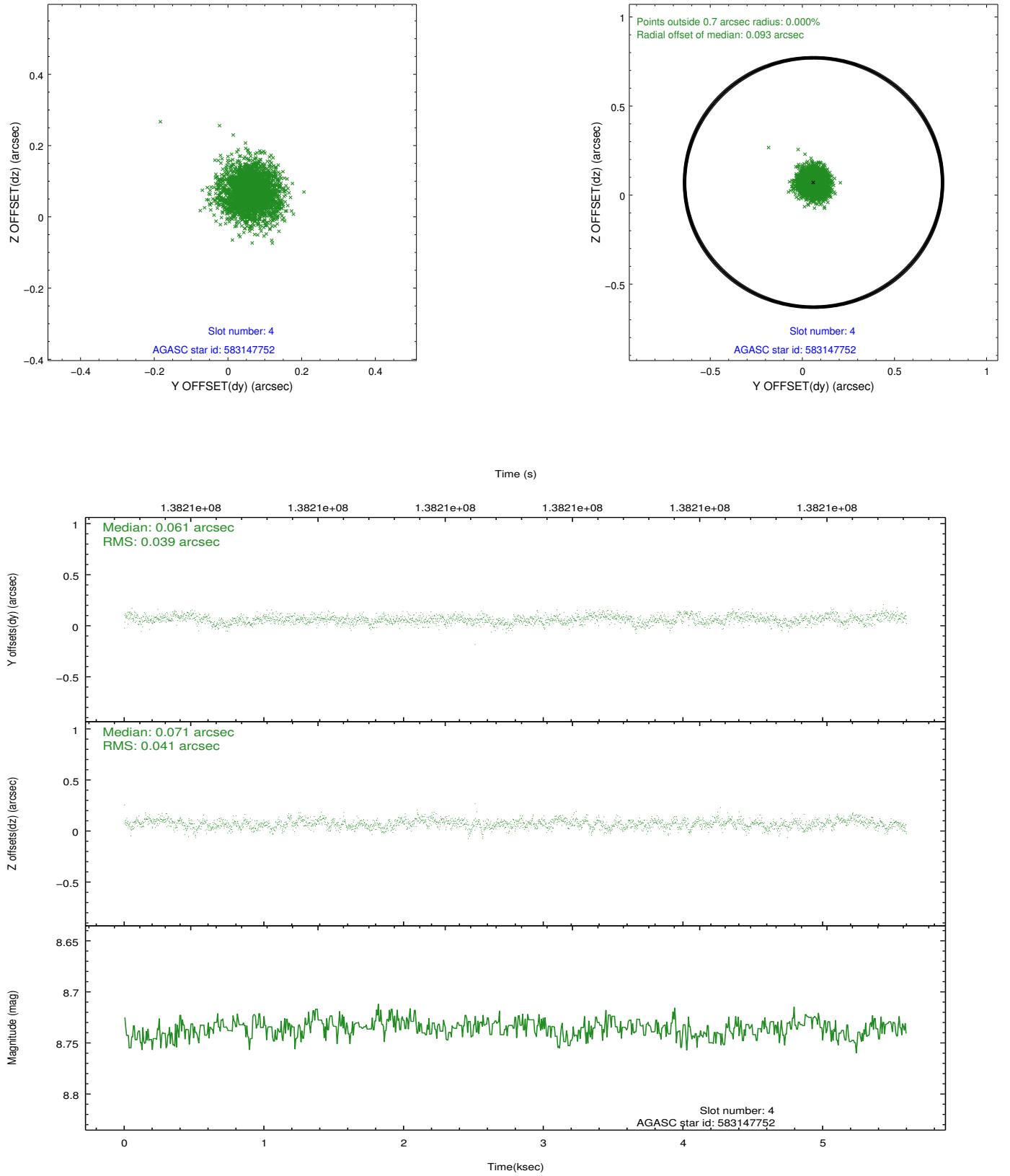
slot	status	id	mag	n_pts	med_dy	med_dz	dr1	dr2	ra	dec	mean_y	mean_z
0	FID	ACIS-S-2	7.11	1365	-0.004	-0.001	0.006	0.010	0.000000	0.000000	-755.75	-1729.11
1	FID	ACIS-S-4	7.20	1365	-0.025	0.002	0.005	0.010	0.000000	0.000000	2157.05	178.24
2	FID	ACIS-S-5	7.24	1364	-0.003	0.007	0.006	0.010	0.000000	0.000000	-1807.19	173.18
3	GUIDE	583020184	8.17	2726	0.013	-0.052	0.060	0.094	293.573245	70.259703	1362.72	1059.24
4	GUIDE	583147752	8.74	2730	0.061	0.071	0.060	0.098	296.288020	69.714483	-2177.95	-520.10
5	GUIDE	583151672	8.92	2729	0.012	-0.158	0.084	0.142	294.494525	69.462314	-1626.26	1843.11
6	GUIDE	583143752	9.14	2728	0.113	-0.007	0.092	0.150	295.552201	70.949752	1987.08	-2312.98
7	GUIDE	583144928	9.01	2730	-0.200	0.146	0.069	0.114	295.801788	70.748419	1224.80	-2142.02

2.4 Star Slots

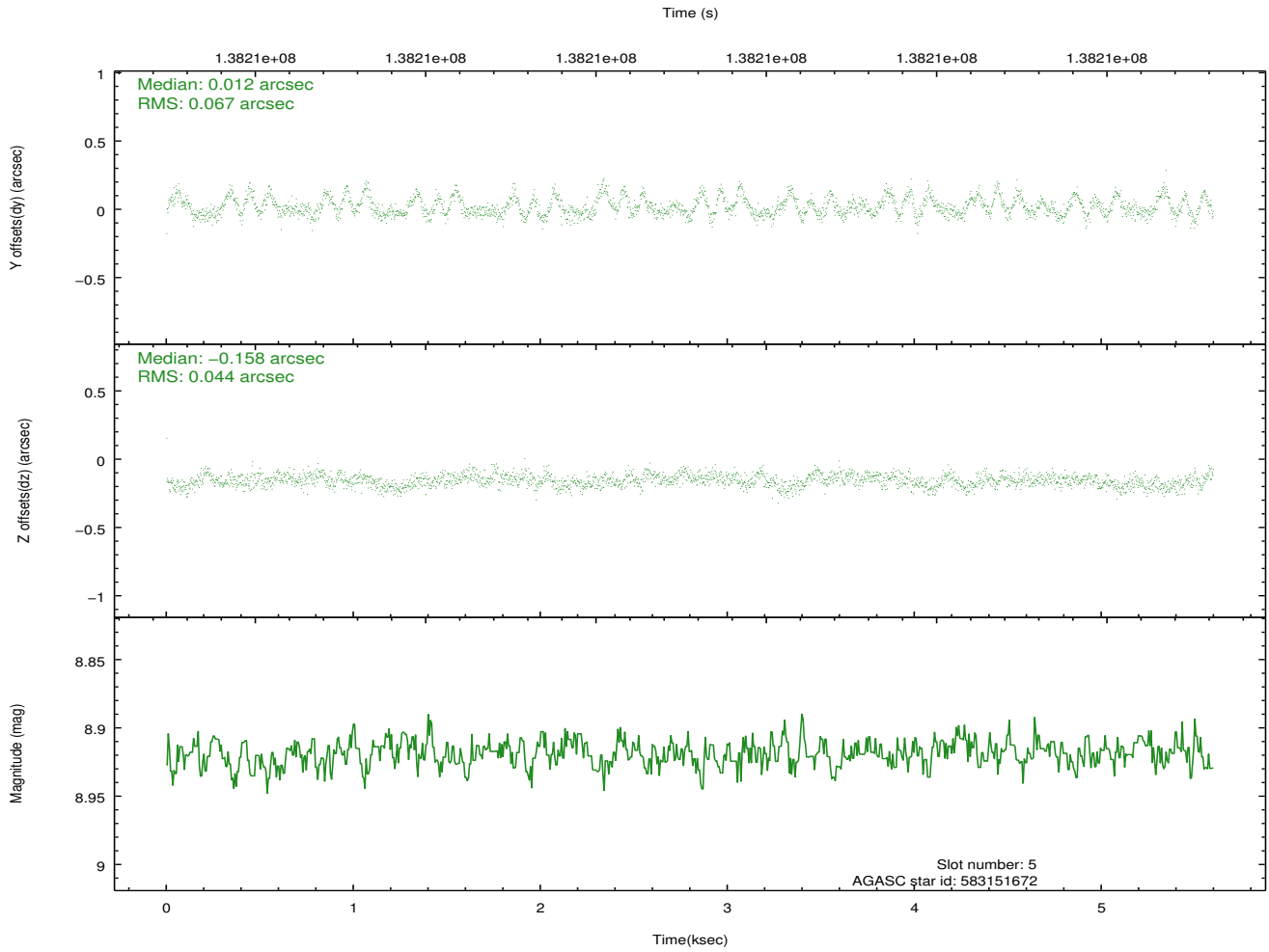
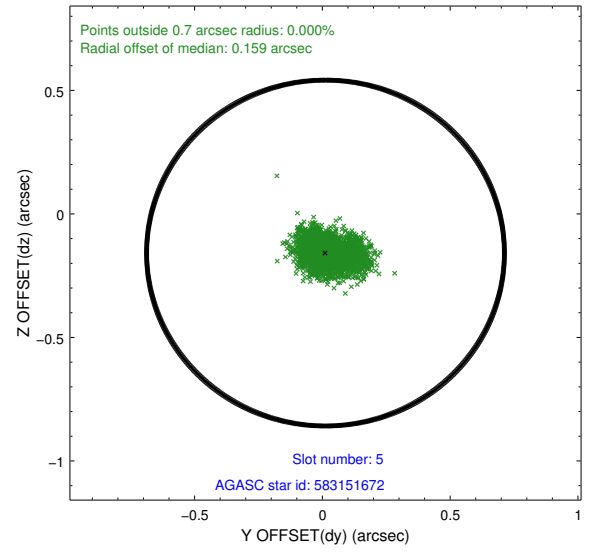
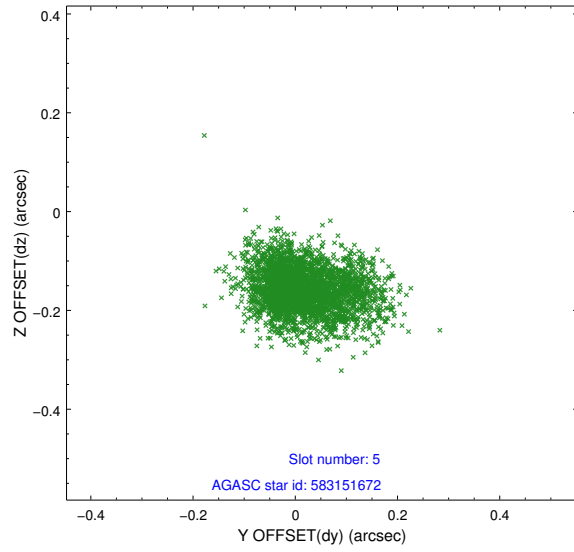
2.4.1 Slot 3



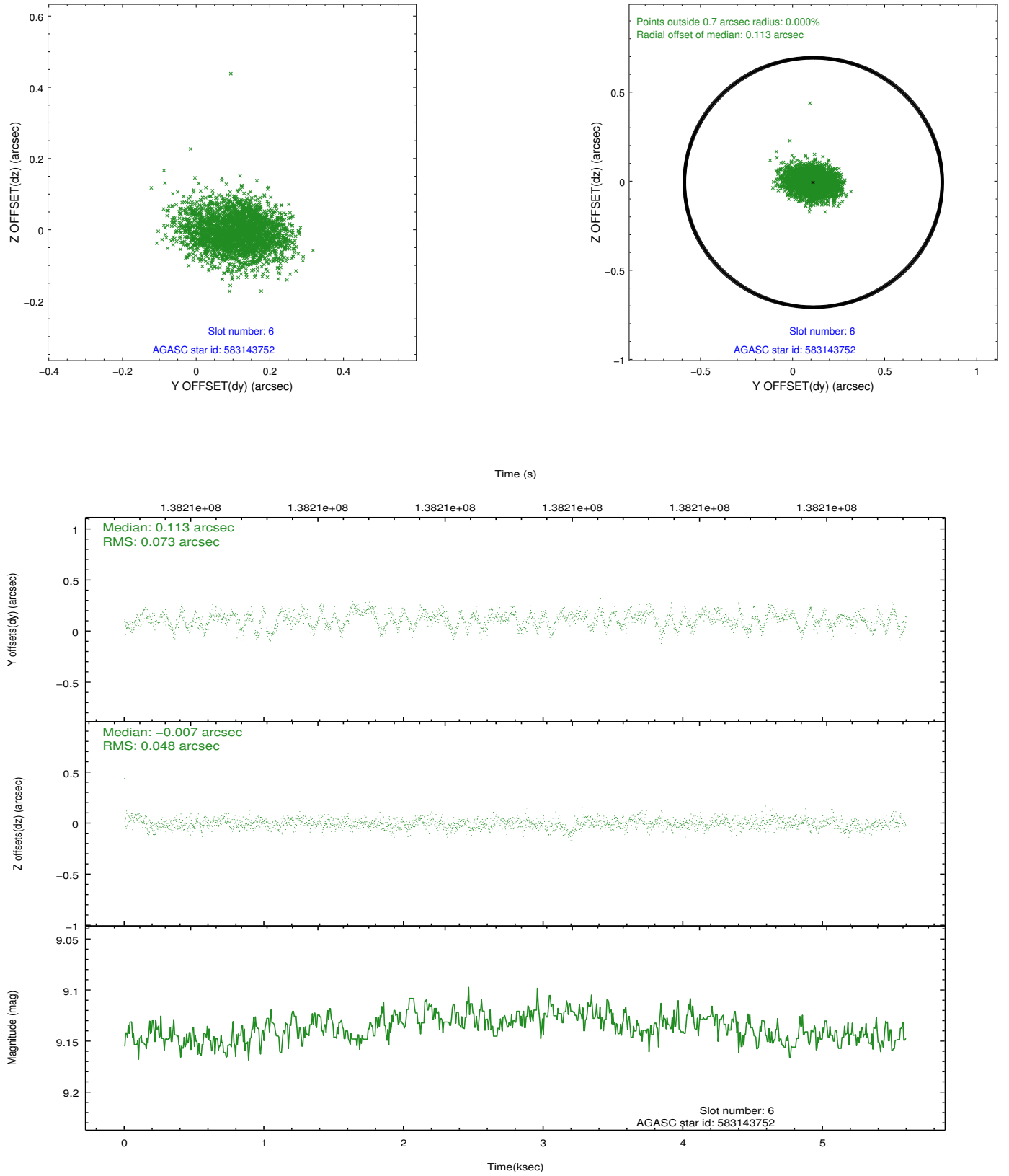
2.4.2 Slot 4



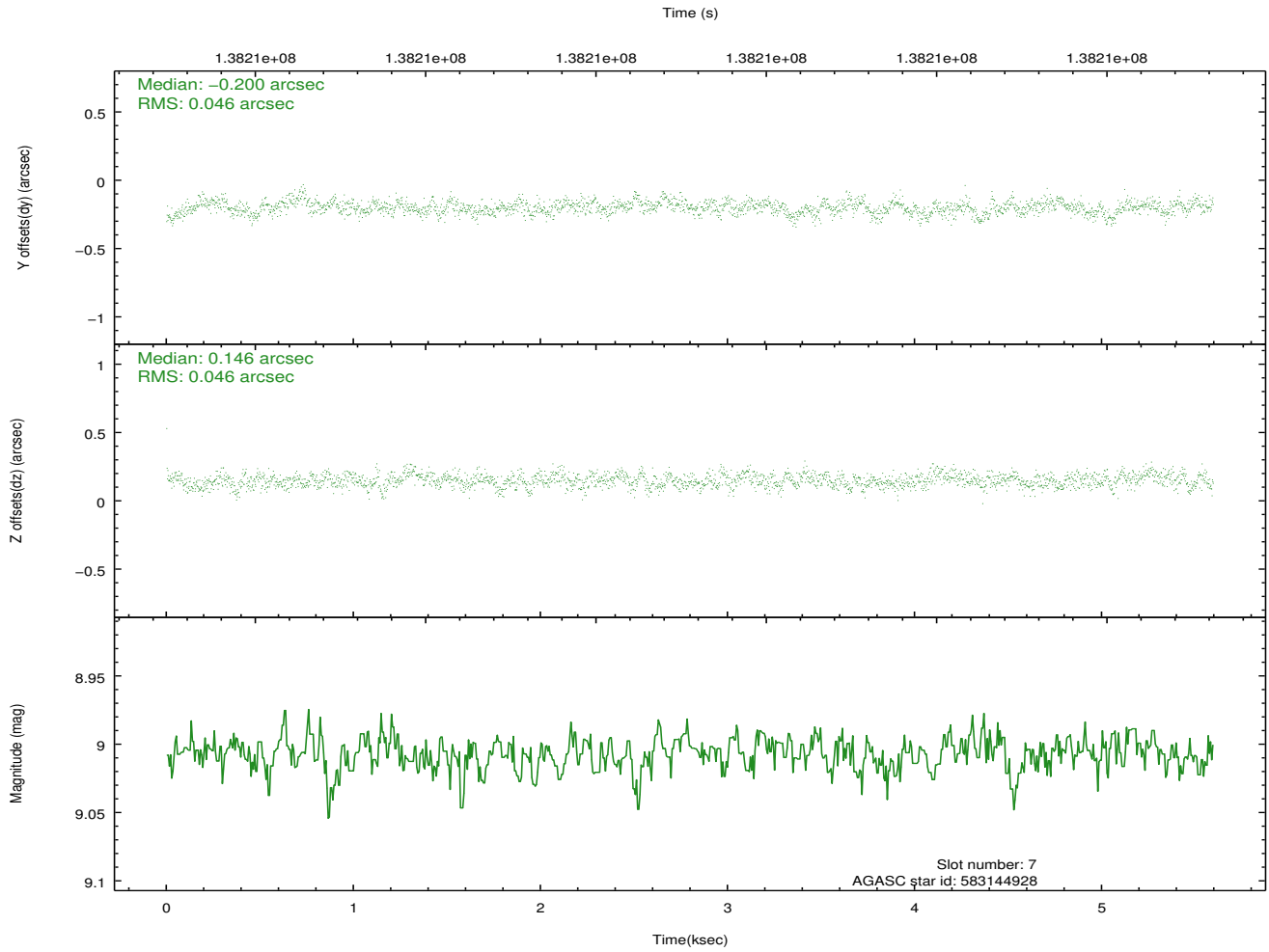
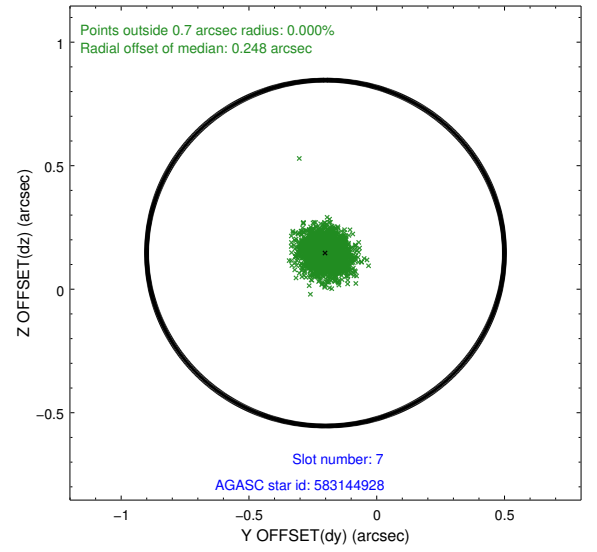
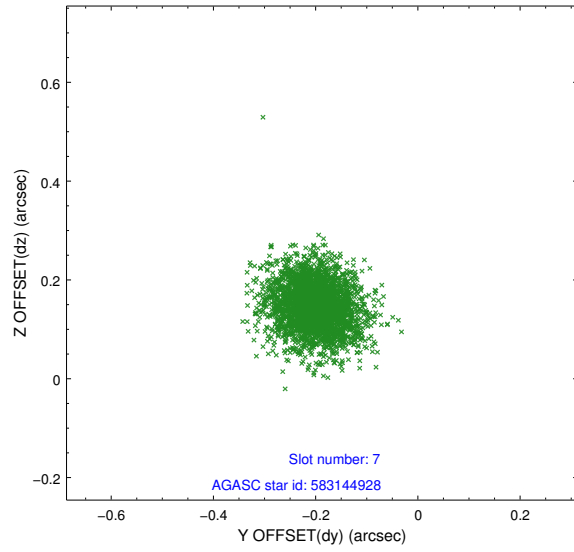
2.4.3 Slot 5



2.4.4 Slot 6

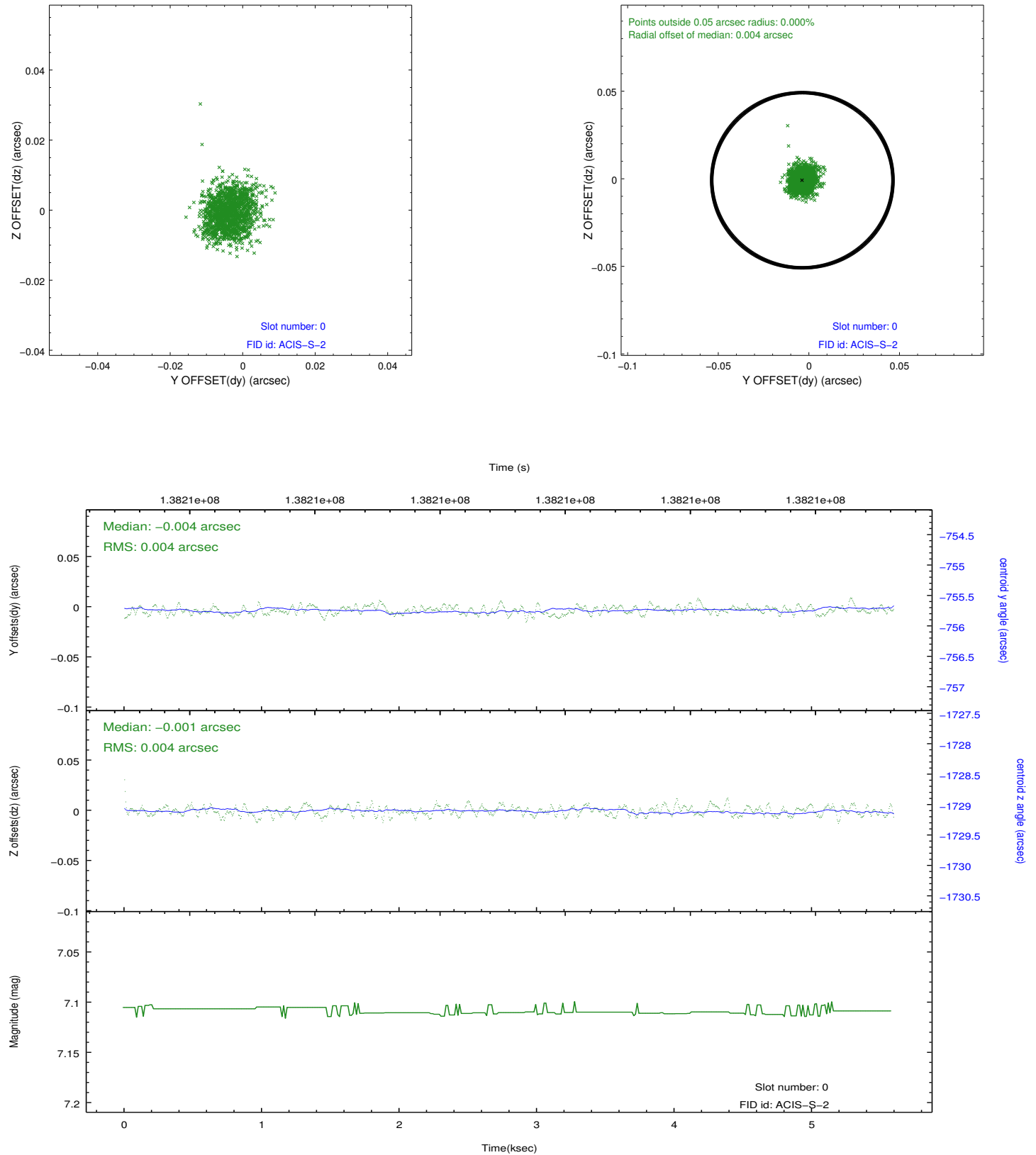


2.4.5 Slot 7

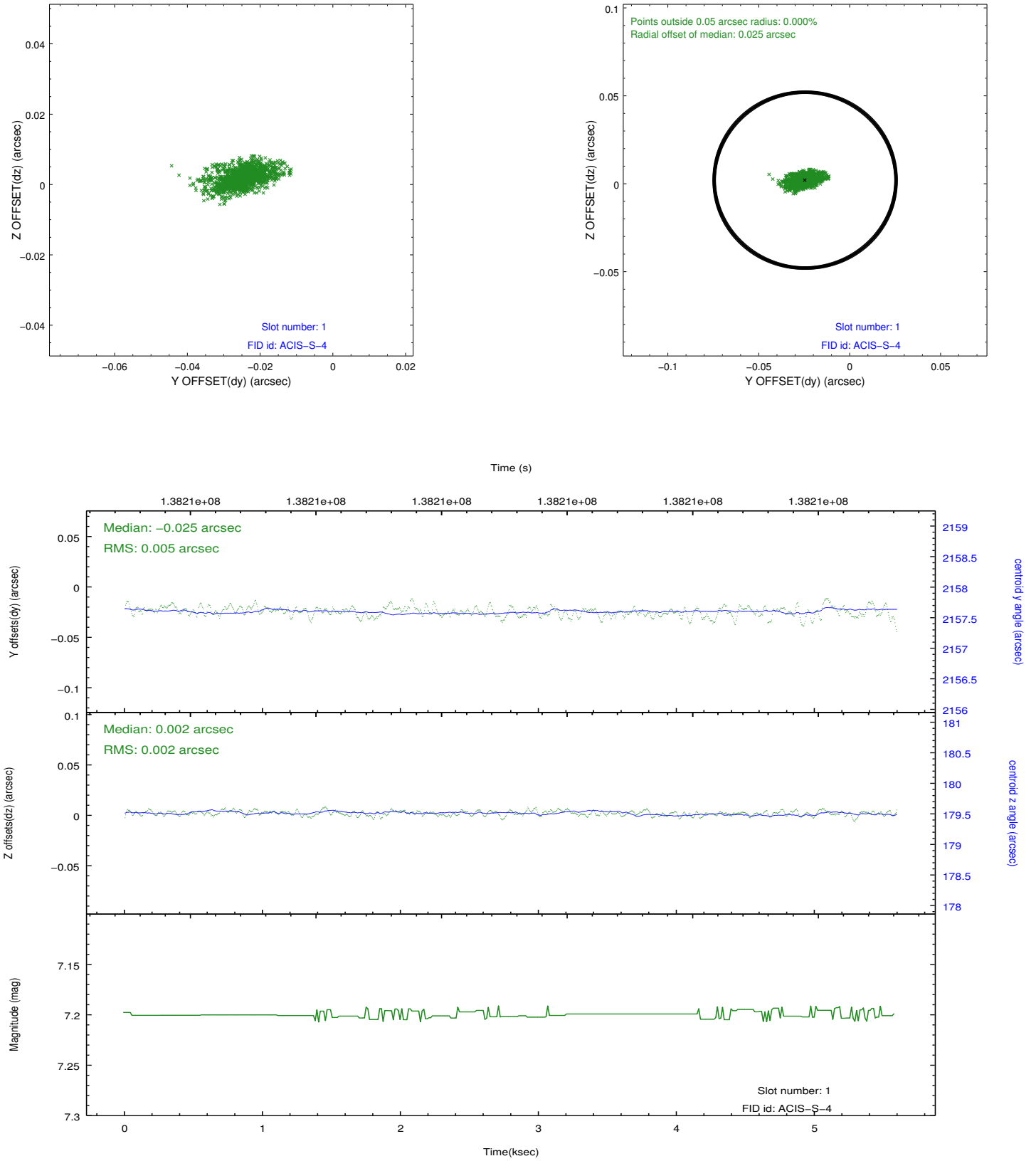


2.5 FID Slots

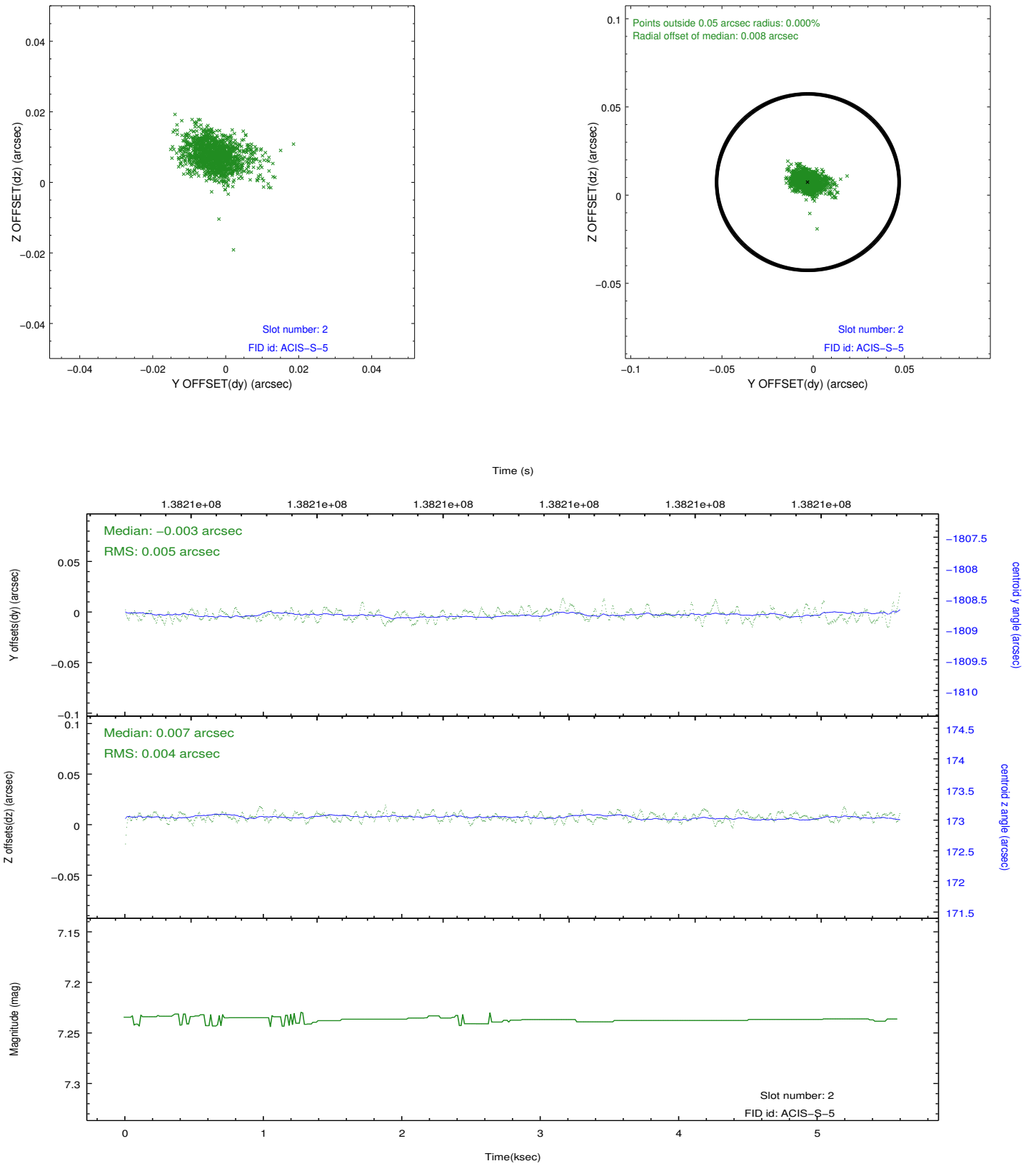
2.5.1 Slot 0



2.5.2 Slot 1



2.5.3 Slot 2



A Summary

A.1 Status

V&V Scientist	Jen Lauer
V&V Date (YYYY-MM-DD)	2012.10.17
V&V Edition	1
V&V Disposition and Status	OK
V&V Charge Time	4.973

A.2 Comments