

V&V Reference Report

L2 ASCDS Version : 8.4.5

Observation 3075 - L2 Version 3
Chandra X-Ray Center

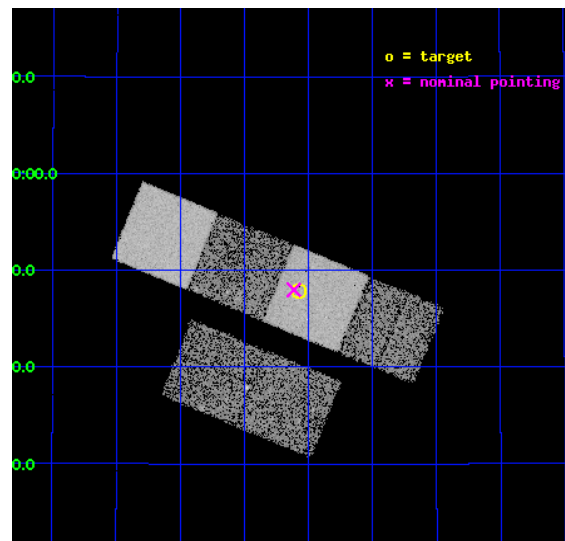
L2 Processing Date : Oct 17 2012

Contents

1	Front	2
2	OBI	3
2.1	OBI	3
2.1.1	Images	3
2.1.2	Bias	3
2.1.3	Parameters	4
2.1.4	Events	4
2.2	Compared Parameters	5
2.3	Aspect	6
2.4	Star Slots	9
2.4.1	Slot 3	9
2.4.2	Slot 4	10
2.4.3	Slot 5	11
2.4.4	Slot 6	12
2.4.5	Slot 7	13
2.5	FID Slots	14
2.5.1	Slot 0	14
2.5.2	Slot 1	15
2.5.3	Slot 2	16
A	Summary	17
A.1	Status	17
A.2	Comments	17

1 Front

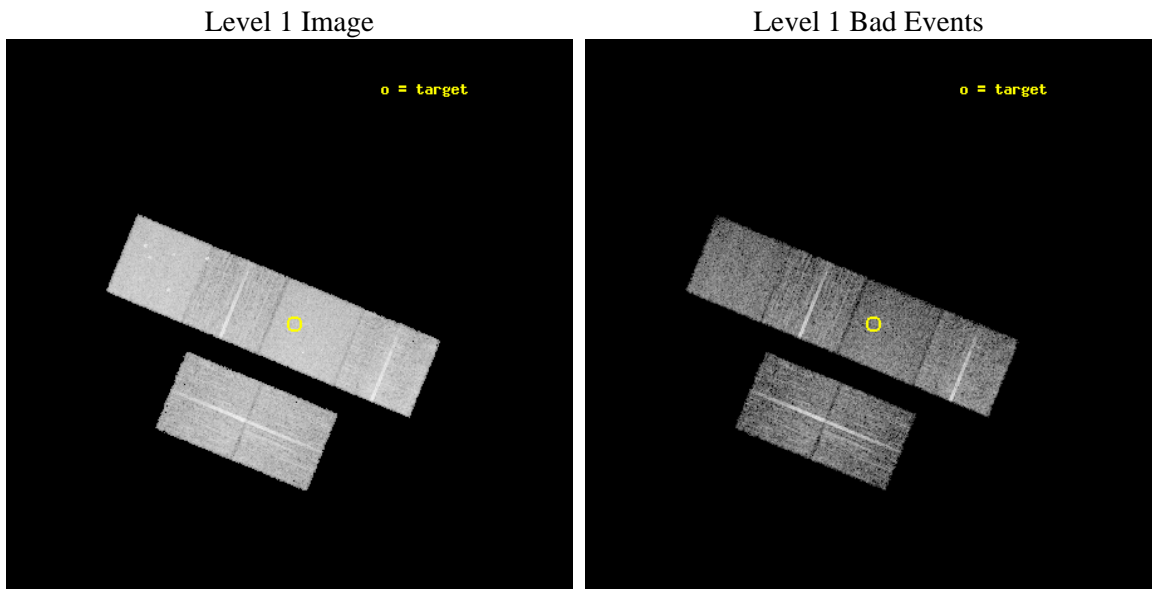
seq_num	700514	Sequence number
obs_id	3075	Observation id
title	X-RAY WEAK BROAD-LINE QUASARS: ABSORPTION OR INTRINSIC X_RAY WEAKNESS ?	Proposal title
observer	Dr Guido Risaliti	Principal investigator
object	HS 1415+2701	Source name
dtcycle	0	
cycle	P	events from which exps? Prim/Second/Both
ra_targ	214.392917	Observer's specified target RA [deg]
dec_targ	26.797778	Observer's specified target Dec [deg]
ra_nom	214.40348336635	Nominal RA [deg]
dec_nom	26.799810880683	Nominal Dec [deg]
roll_nom	22.340596547959	Nominal Roll [deg]
revision	3	Processing version of data
ontime	8721.8615946174	Sum of GTIs [s]
livetime	8611.4201314318	Livetime [s]
ontime2	8718.6616643667	Sum of GTIs [s]
ontime3	8721.7384746075	Sum of GTIs [s]
ontime5	8721.8205546141	Sum of GTIs [s]
ontime6	8721.7795146108	Sum of GTIs [s]
ontime7	8721.8615946174	Sum of GTIs [s]
ontime8	8718.4564842582	Sum of GTIs [s]
l2events	87308	Number of level 2 events



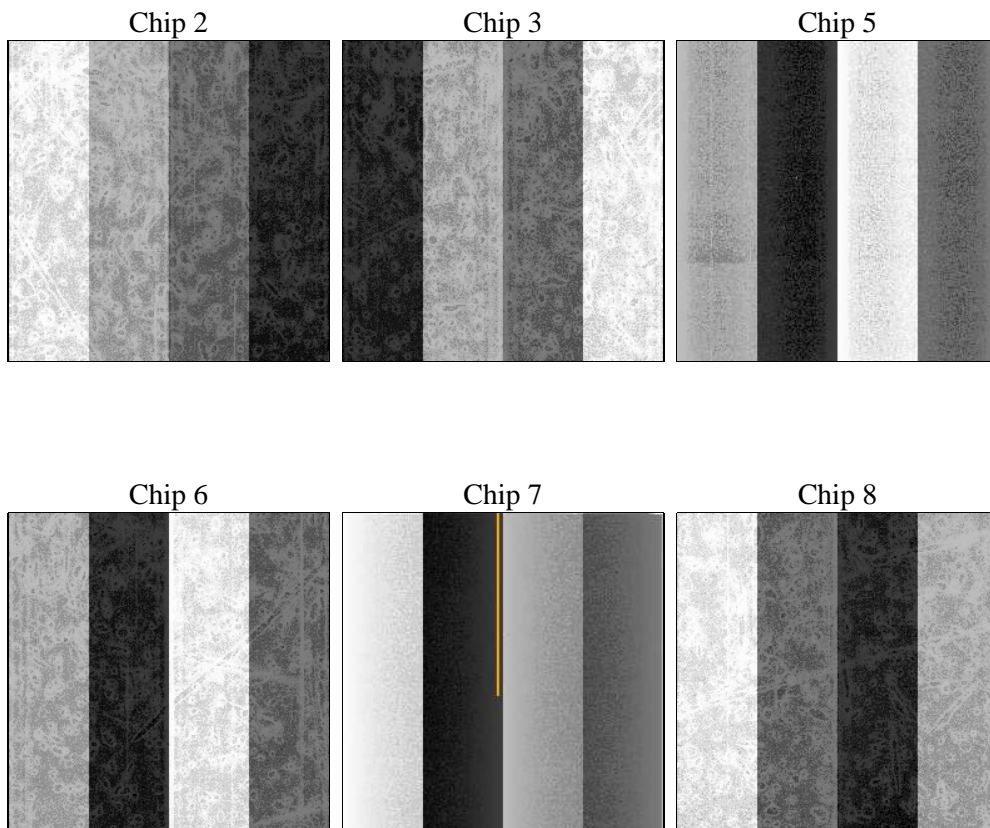
2 OBI

2.1 OBI

2.1.1 Images



2.1.2 Bias



2.1.3 Parameters

obi_num	3	Obi number	sched_exp_time	9000.000000	[s] Scheduled observation exposure time
ascdsver	8.4.5	Processing system revision	ontime	8721.8615946174	Sum of GTIs [s]
caldbver	4.5.2	 	ontime2	8718.6616643667	Sum of GTIs [s]
date	2012-10-17T12:00:37	Date and time of file creation	ontime3	8721.7384746075	Sum of GTIs [s]
revision	3	Processing version of data	ontime5	8721.8205546141	Sum of GTIs [s]
			ontime6	8721.7795146108	Sum of GTIs [s]
			ontime7	8721.8615946174	Sum of GTIs [s]
			ontime8	8718.4564842582	Sum of GTIs [s]
			l1events	392052	Number of level 1 events

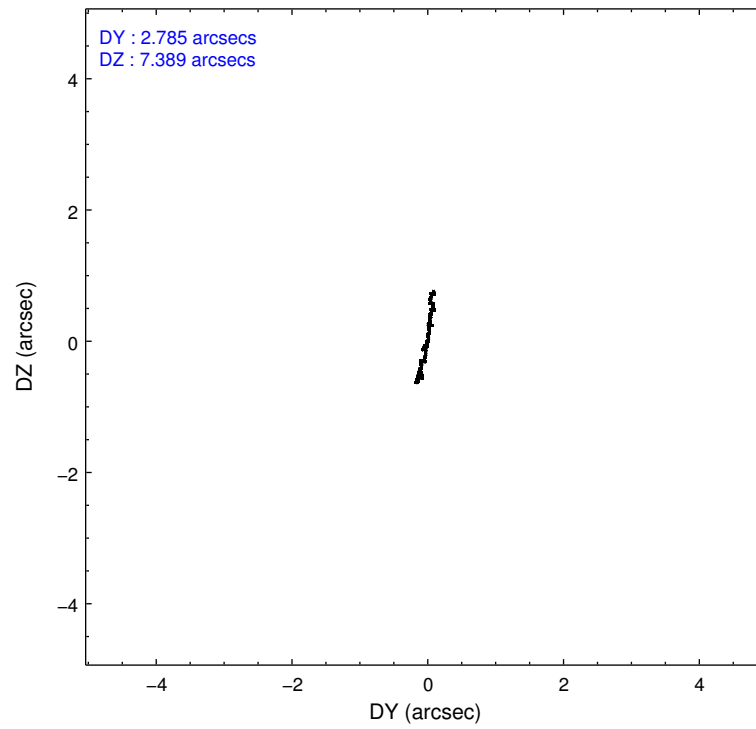
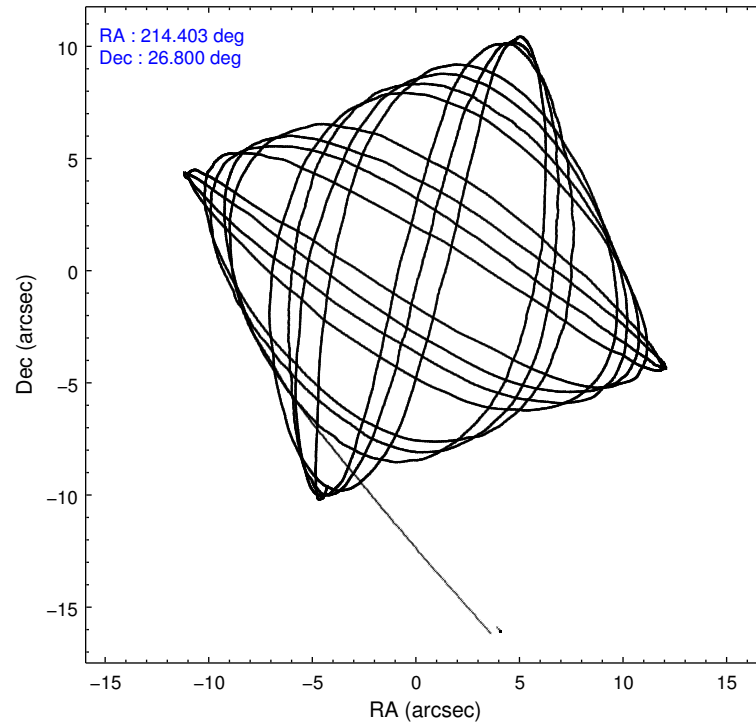
2.1.4 Events

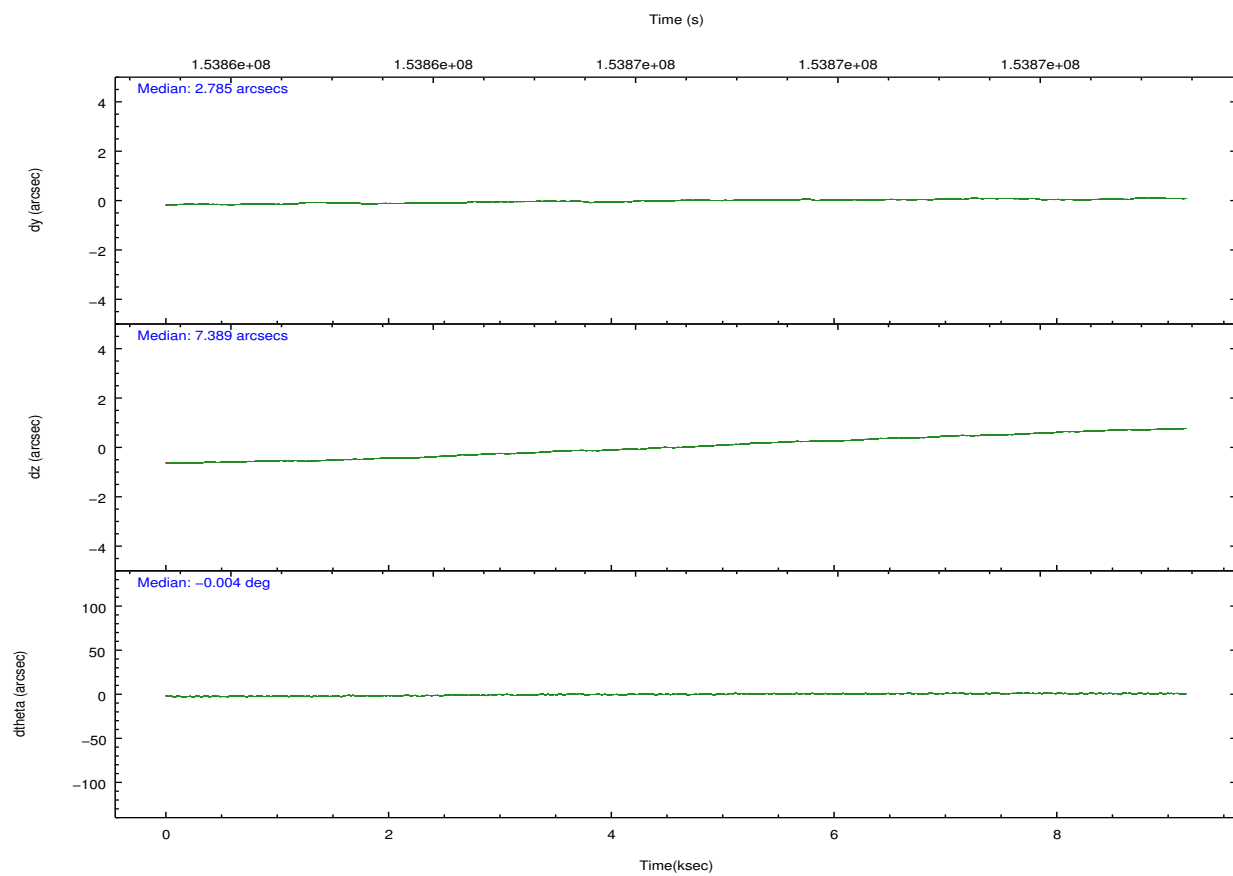
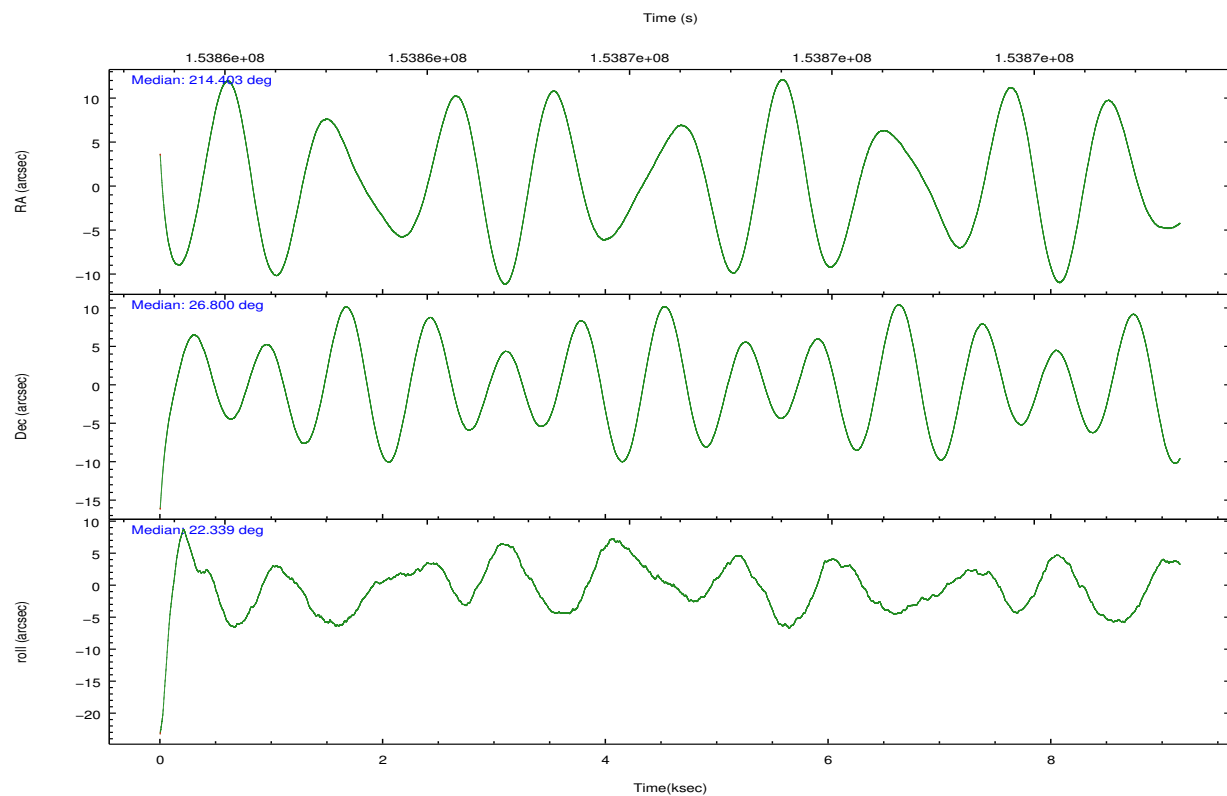
	ccd 2	ccd 3	ccd 5	ccd 6	ccd 7	ccd 8		ccd 2	ccd 3	ccd 5	ccd 6	ccd 7	ccd 8
level 1 events	55574	53716	80131	58292	73241	71098	grade 0 events	2994	2785	3202	2745	2972	4356
rejected events	49024	47409	43877	51724	42667	57106		5%	5%	3%	4%	4%	6%
rejected %	88%	88%	54%	88%	58%	80%	grade 1 events	39	43	131	24	62	43
								0%	0%	0%	0%	0%	0%
							grade 2 events	1237	1157	10650	1290	6023	3130
								2%	2%	13%	2%	8%	4%
							grade 3 events	642	633	1506	624	2721	1460
								1%	1%	1%	1%	3%	2%
							grade 4 events	648	621	1454	629	2710	1343
								1%	1%	1%	1%	3%	1%
							grade 5 events	2152	2237	5875	2548	6926	3307
								3%	4%	7%	4%	9%	4%
							grade 6 events	1033	1118	19461	1283	16175	3706
								1%	2%	24%	2%	22%	5%
							grade 7 events	46829	45122	37852	49149	35652	53753
								84%	84%	47%	84%	48%	75%

2.2 Compared Parameters

Parameter	Planned	Actual	Parameter	Planned	Actual
Instrument	ACIS	ACIS	Obspar format version number	7	7
Detector	ACIS-235678	ACIS-235678	Obspar file type	PREDICTED	ACTUAL
Grating	NONE	NONE	Obspar update status	NONE	UPDATED
Data mode	FAINT	FAINT	Number of optional ACIS chips dropped	0	0
Observation mode	POINTING	POINTING	On-chip summing requested	N	N
[deg] Pointing RA	214.385195	214.4034833663516	Subarray requested	NONE	NONE
[deg] Pointing Dec	26.778044	26.79981088068347	Alternating exposures requested	N	N
[deg] Pointing Roll	22.192233	22.34059654795933	[s] Primary exposure time	0.000000	3.2
[mm] SIM focus pos	-0.684267	-0.6828225247311905			
[mm] SIM defocus	0	0.001444936568705701			
[mm] SIM translation stage pos	-190.132523	-190.1400660498719			
[mm] SIM translation stage offset	0	0.00754346686406393			
[s] Observation start time (MET)	153861984.184000	153860935.75439			
Observation start date	2002-11-16T19:25:20	2002-11-16T19:08:55			
[s] Observation end time (MET)	153870984.184000	153871531.17983			
Observation end date	2002-11-16T21:55:20	2002-11-16T22:05:31			
Read mode	TIMED	TIMED			

2.3 Aspect



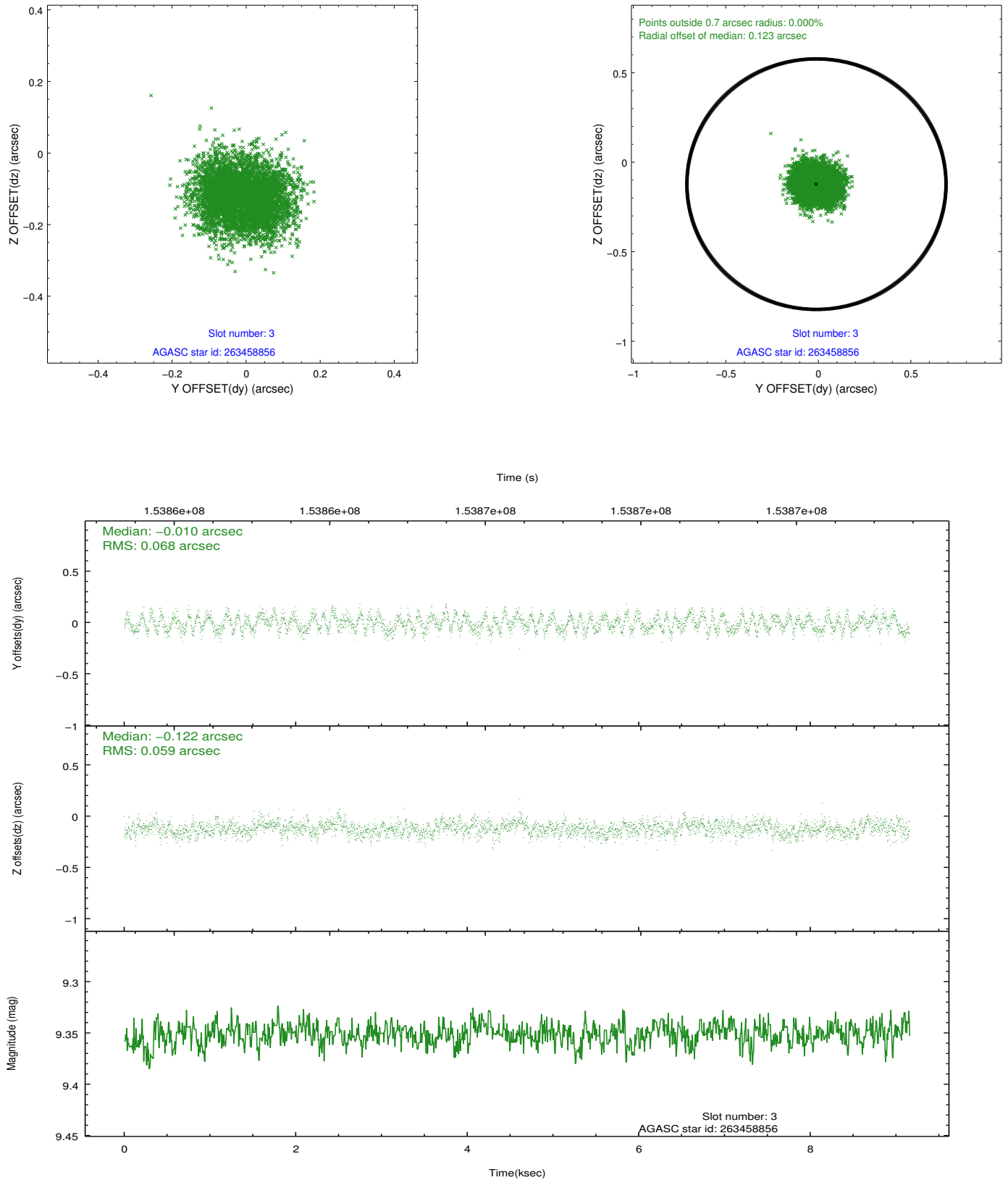


Slot Statistics

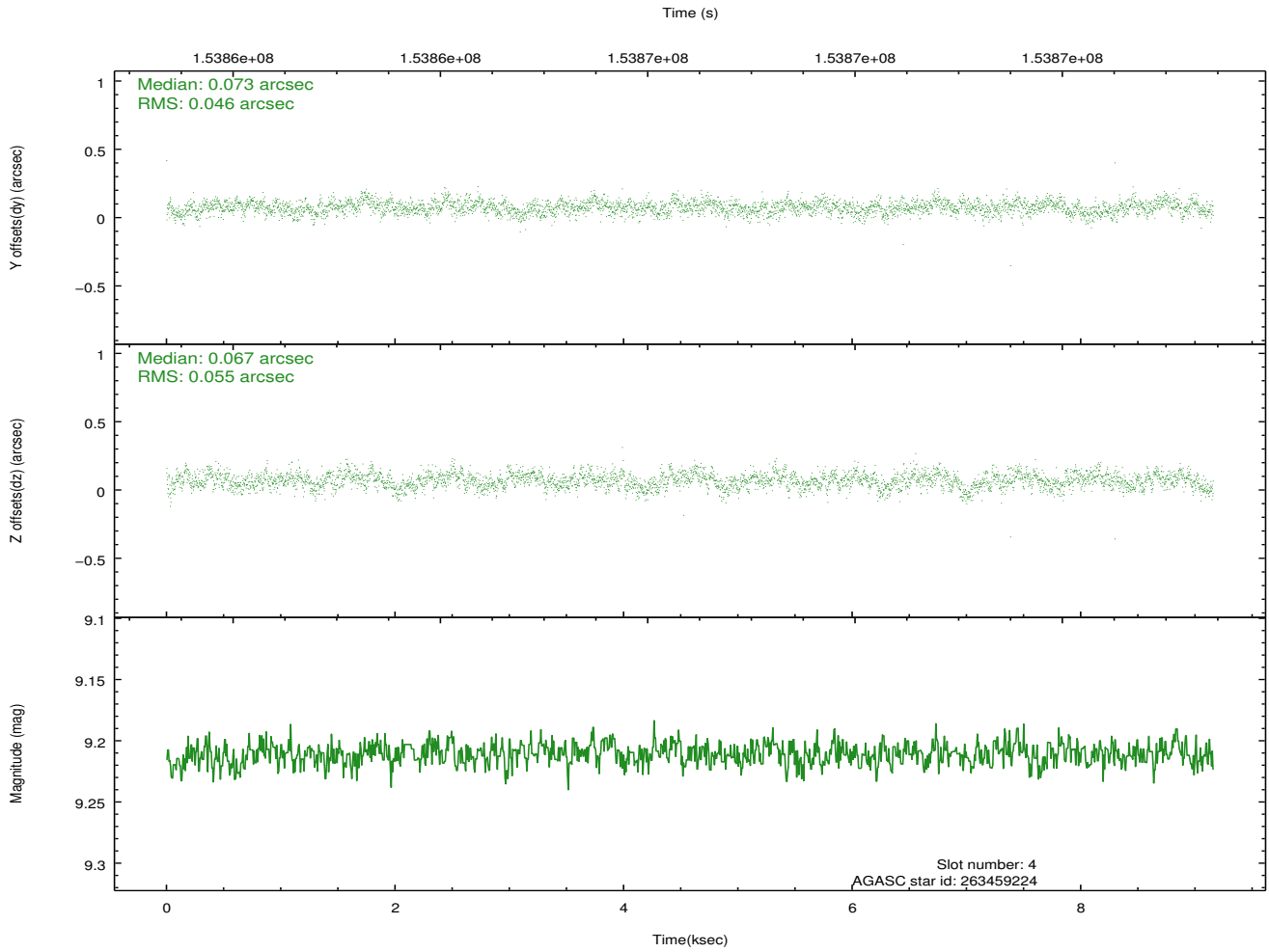
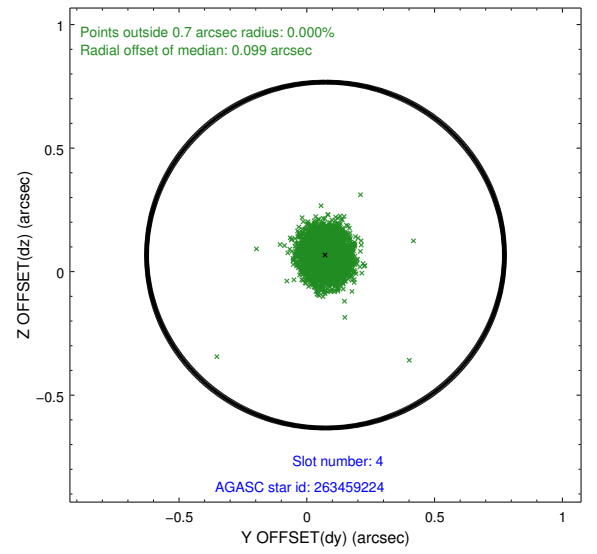
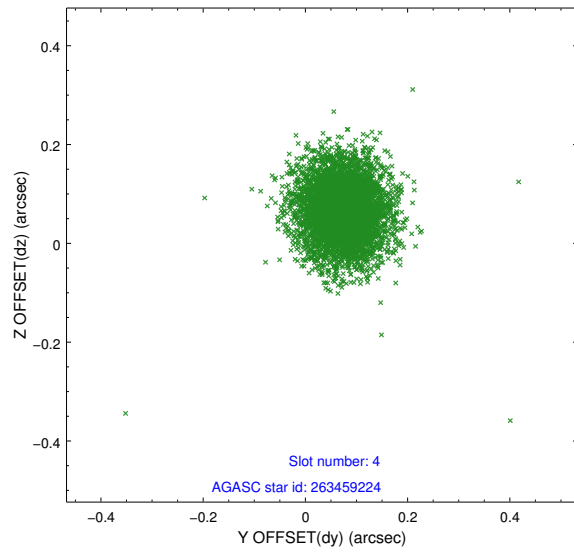
slot	status	id	mag	n_pts	med_dy	med_dz	dr1	dr2	ra	dec	mean_y	mean_z
0	FID	ACIS-S-2	7.11	2234	-0.017	-0.001	0.011	0.017	0.000000	0.000000	-755.42	-1728.59
1	FID	ACIS-S-4	7.20	2233	-0.009	0.009	0.006	0.010	0.000000	0.000000	2157.60	179.28
2	FID	ACIS-S-5	7.24	2233	-0.005	0.002	0.011	0.018	0.000000	0.000000	-1807.48	173.63
3	GUIDE	263458856	9.35	4465	-0.010	-0.122	0.097	0.149	214.297460	27.284111	429.32	1792.57
4	GUIDE	263459224	9.21	4467	0.073	0.067	0.074	0.121	214.219599	26.365853	-1053.61	-1171.87
5	GUIDE	263459608	10.04	4390	-0.098	-0.167	0.126	0.204	214.858921	27.290229	2101.40	1136.08
6	GUIDE	263464184	9.96	4461	0.182	0.148	0.107	0.176	214.167336	26.155562	-1496.27	-1808.46
7	GUIDE	263589920	9.40	4460	-0.149	0.076	0.095	0.158	215.086125	26.988335	2370.92	-143.21

2.4 Star Slots

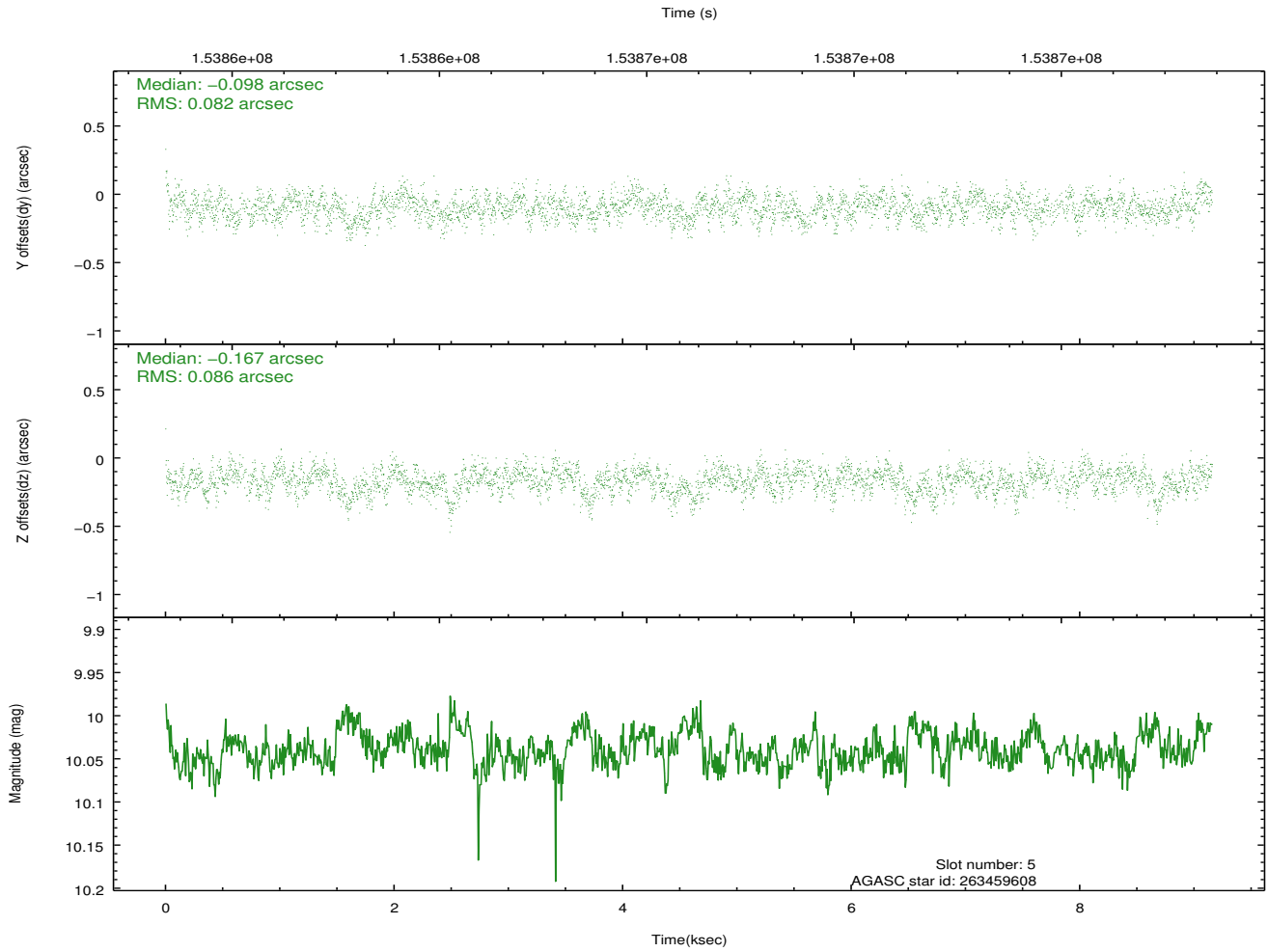
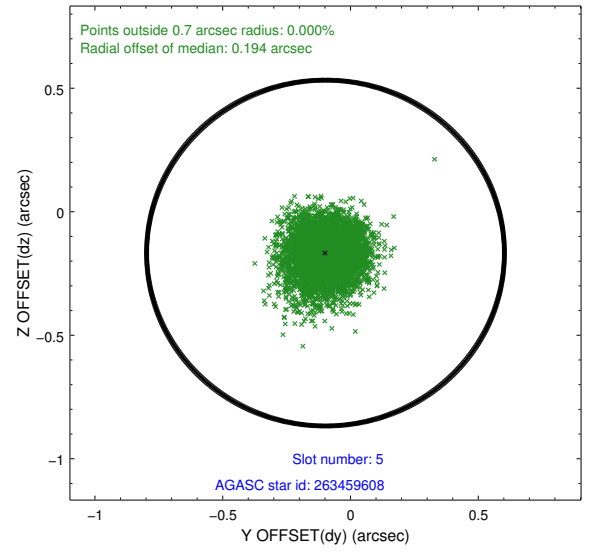
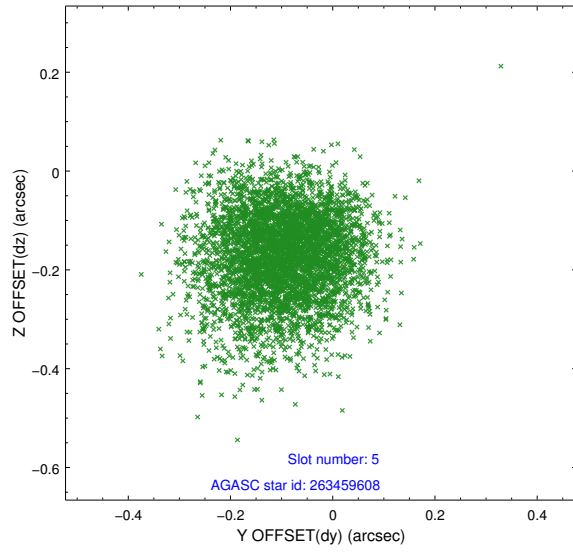
2.4.1 Slot 3



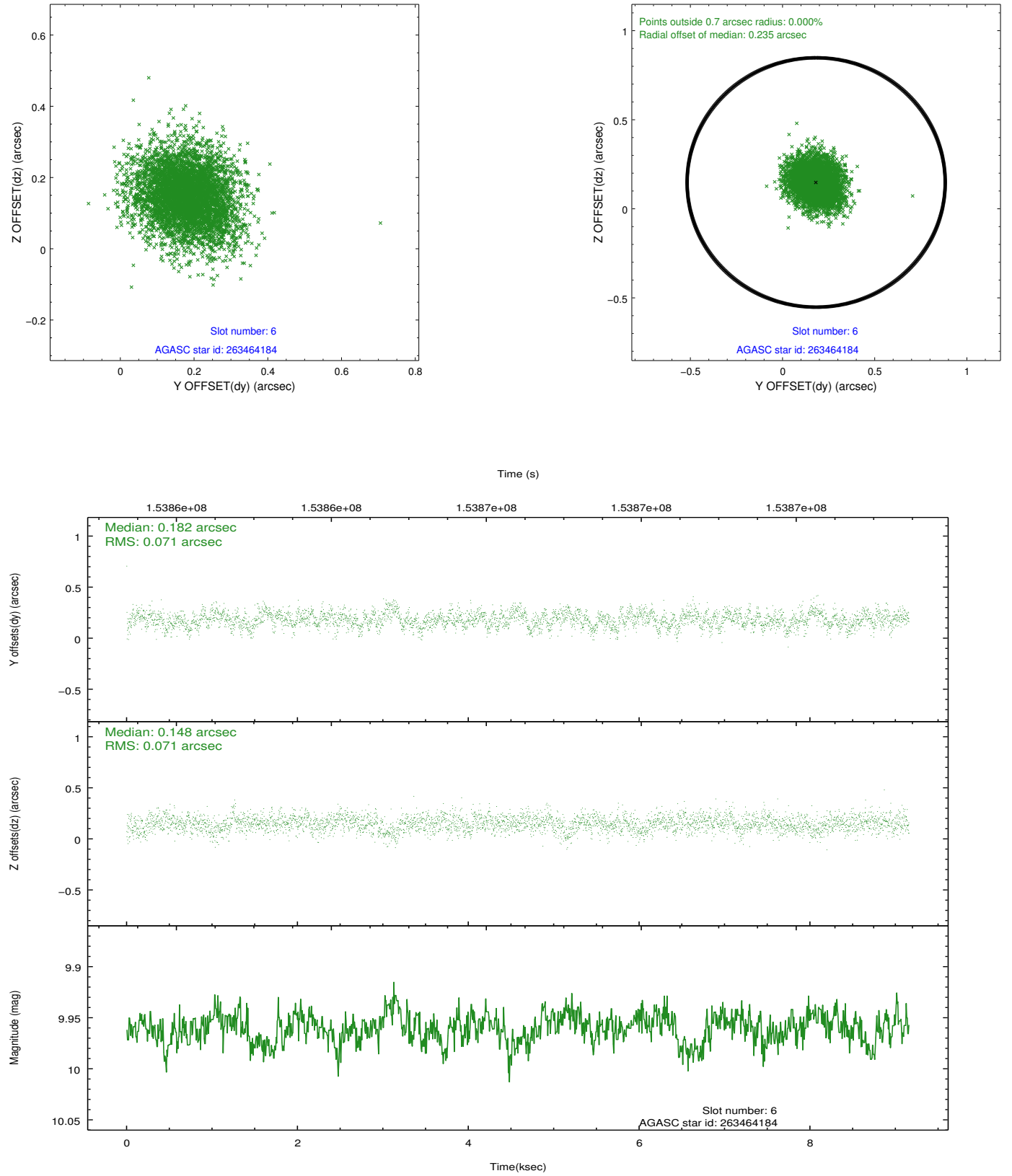
2.4.2 Slot 4



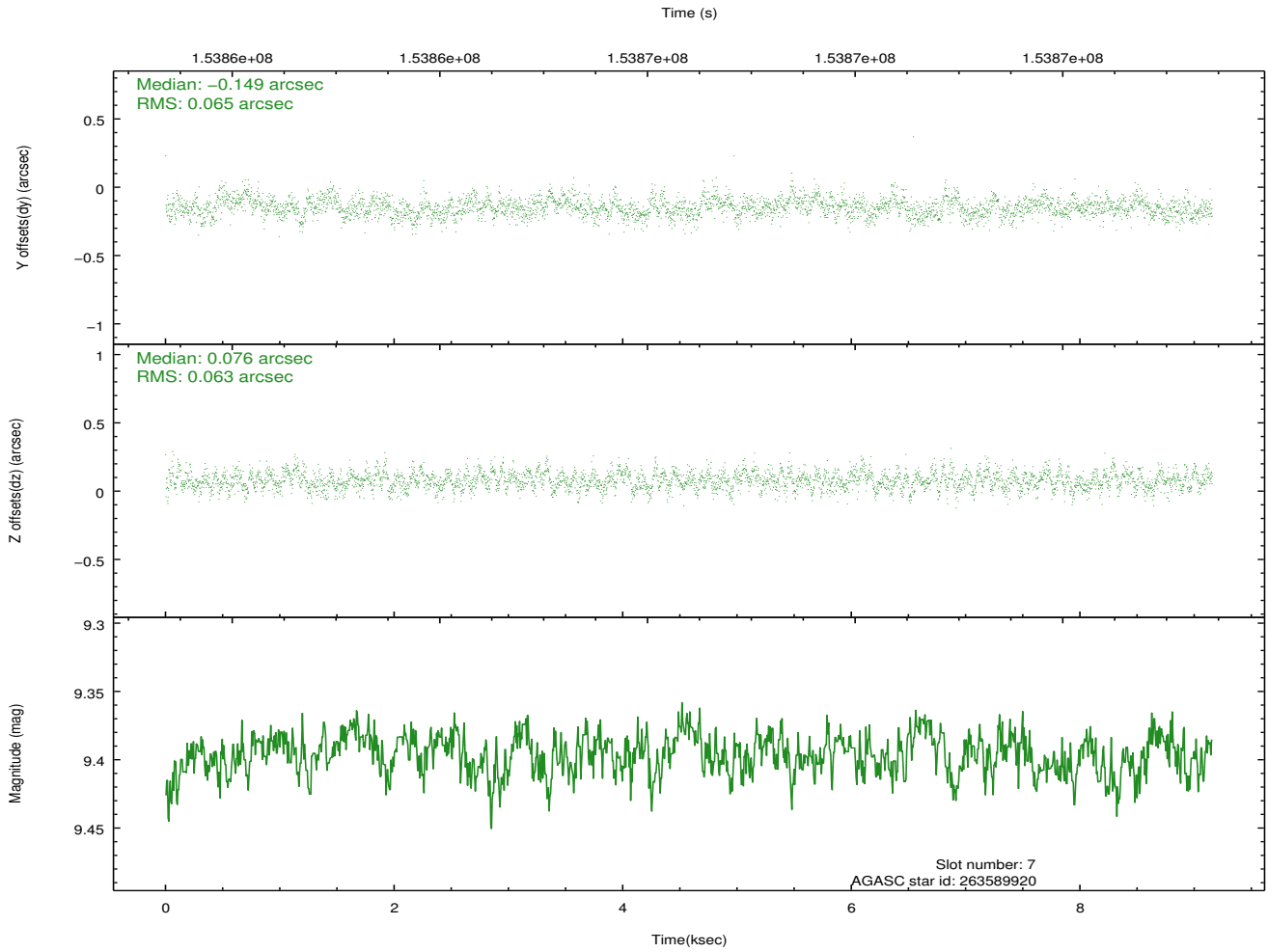
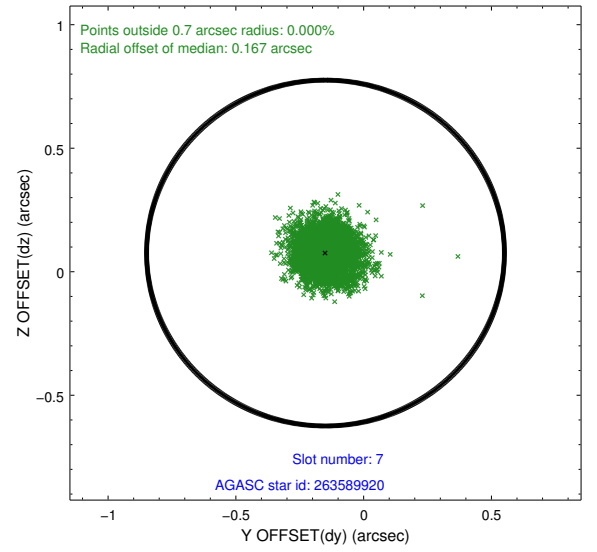
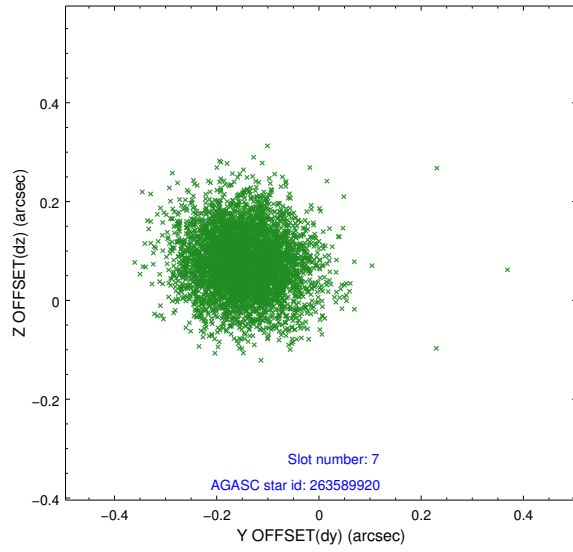
2.4.3 Slot 5



2.4.4 Slot 6

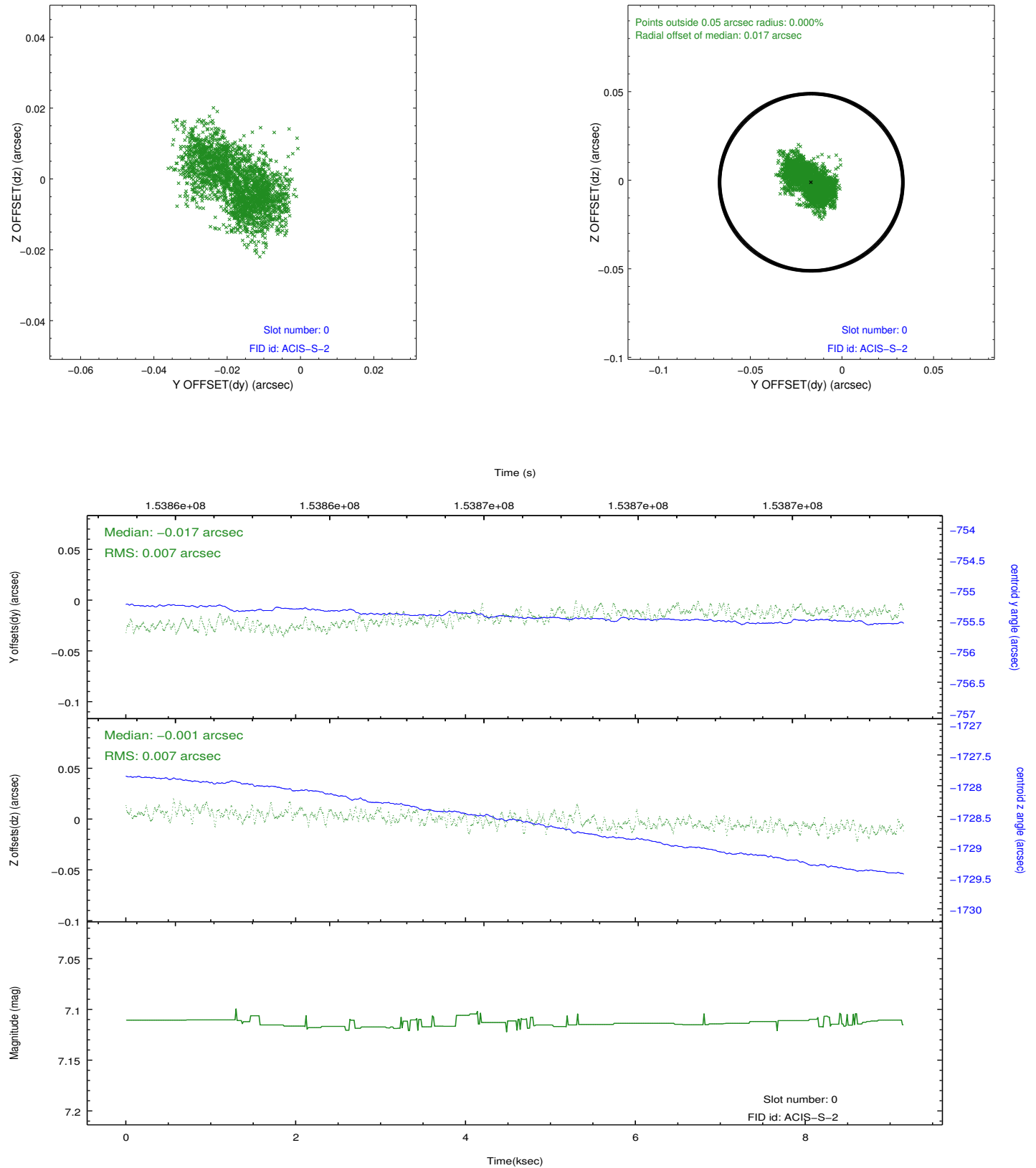


2.4.5 Slot 7

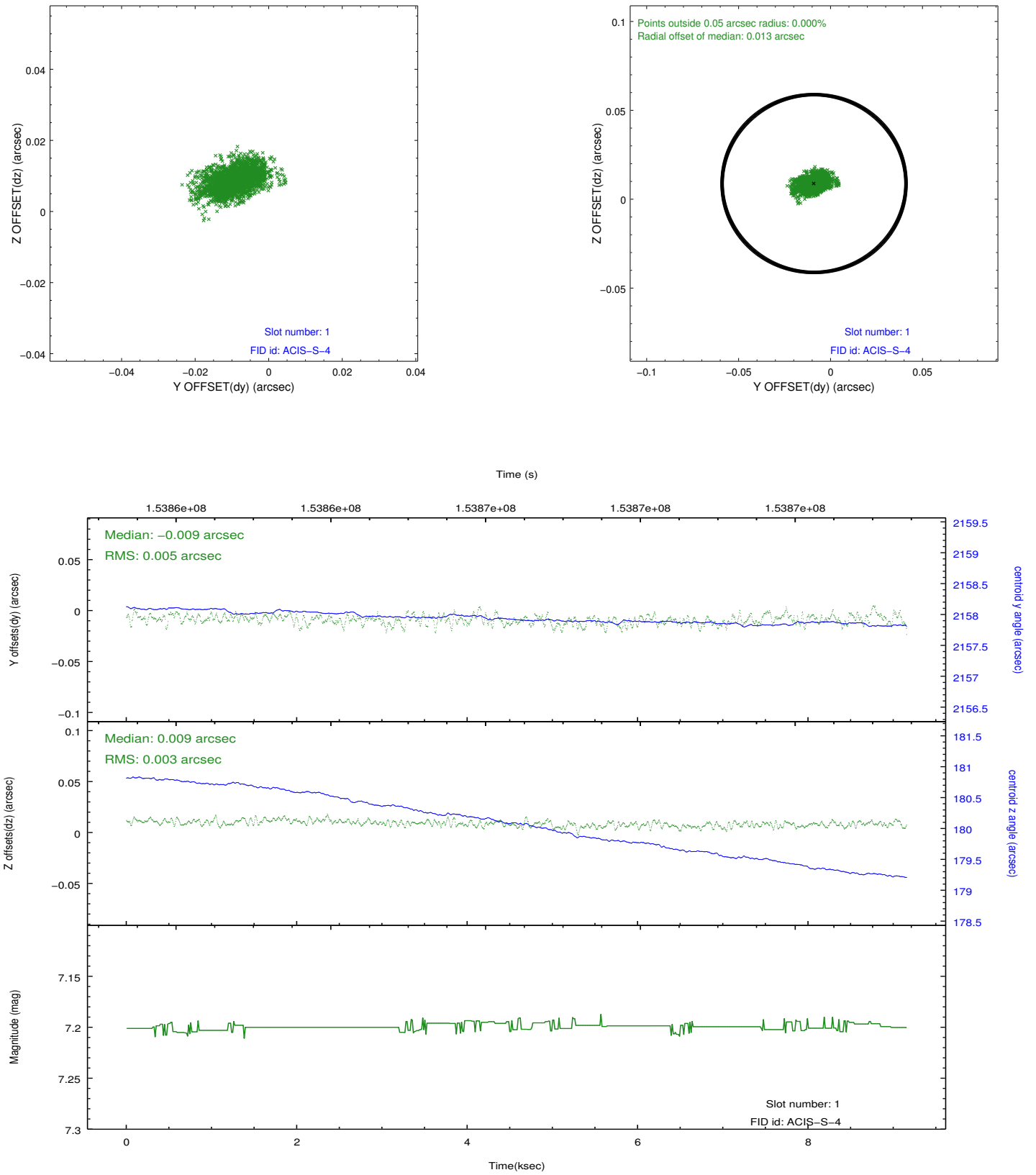


2.5 FID Slots

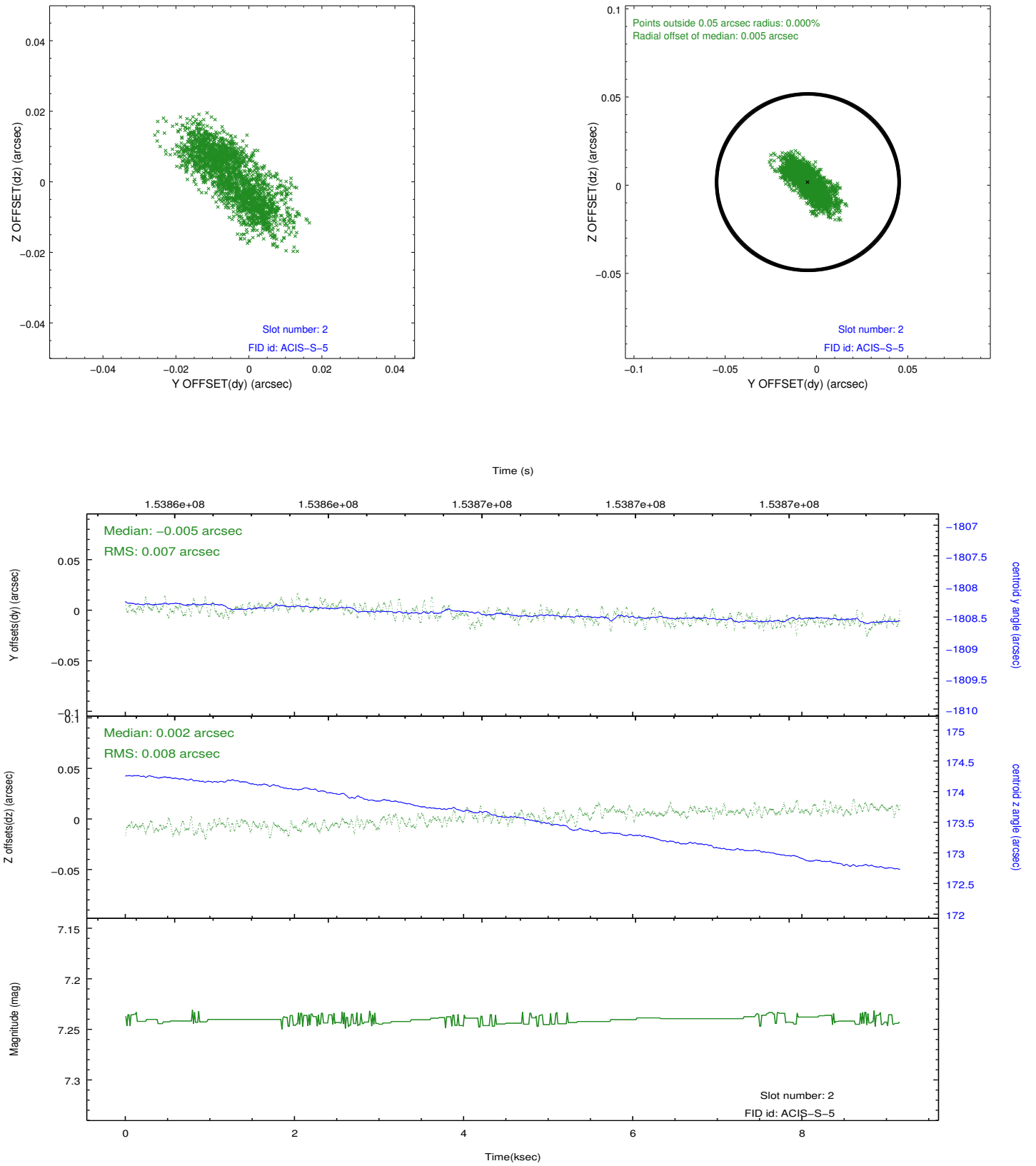
2.5.1 Slot 0



2.5.2 Slot 1



2.5.3 Slot 2



A Summary

A.1 Status

V&V Scientist	Jen Lauer
V&V Date (YYYY-MM-DD)	2012.10.26
V&V Edition	1
V&V Disposition and Status	OK
V&V Charge Time	8.723

A.2 Comments