

V&V Reference Report

L2 ASCDS Version : 7.6.9

Observation 3075 - L2 Version 001
Chandra X-Ray Center

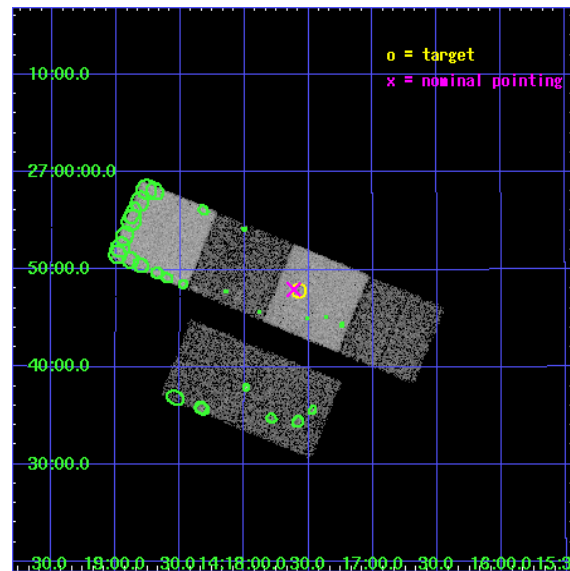
L2 Processing Date : Oct 9 2006

Contents

1	Front	2
2	OBI	3
2.1	OBI	3
2.1.1	Images	3
2.1.2	Bias	3
2.1.3	Parameters	4
2.1.4	Events	4
2.2	Compared Parameters	5
2.3	Aspect	6
2.4	Star Slots	9
2.4.1	Slot 3	9
2.4.2	Slot 4	10
2.4.3	Slot 5	11
2.4.4	Slot 6	12
2.4.5	Slot 7	13
2.5	FID Slots	14
2.5.1	Slot 0	14
2.5.2	Slot 1	15
2.5.3	Slot 2	16
3	Point Sources	17
A	Summary	18
A.1	Status	18
A.2	Comments	18

1 Front

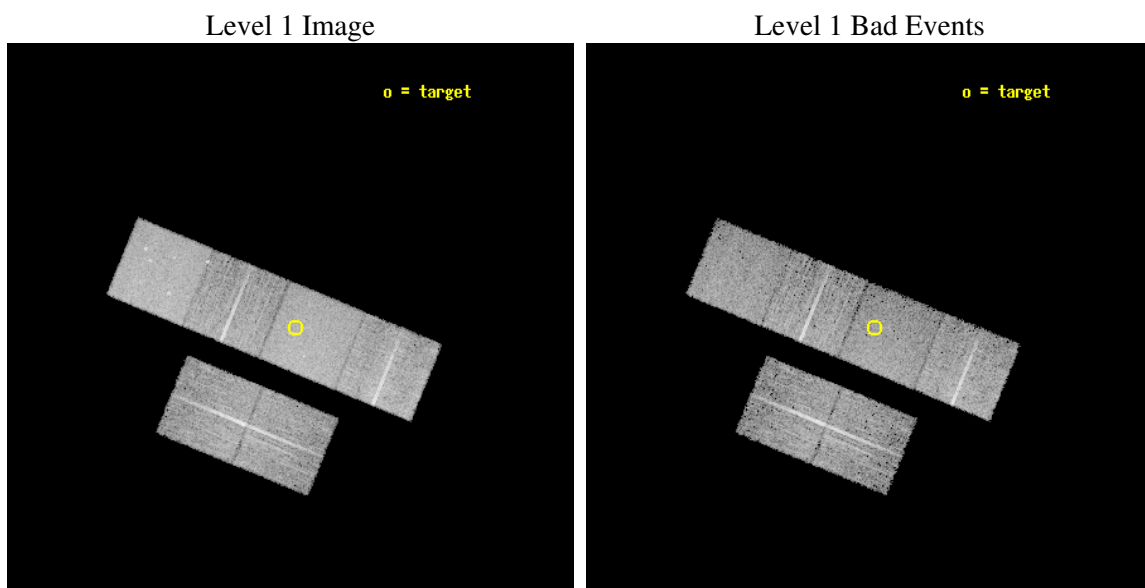
seq_num	700514
obs_id	3075
title	X-RAY WEAK BROAD-LINE QUASARS: ABSORPTION OR INTRINSIC X_RAY WEAKNESS ?
observer	Dr Guido Risaliti
object	HS 1415+2701
dtcycle	0
cycle	P
ra_targ	214.392917
dec_targ	26.797778
ra_nom	214.40348337049
dec_nom	26.799810877961
roll_nom	22.340596549874
revision	2
ontime	8723.1999675035
livetime	8612.7415570346
ontime2	8719.9589972496
ontime3	8723.1999675035
ontime5	8723.1999675035
ontime6	8723.1999675035
ontime7	8723.1999675035
ontime8	8719.9591266811
l2events	84092



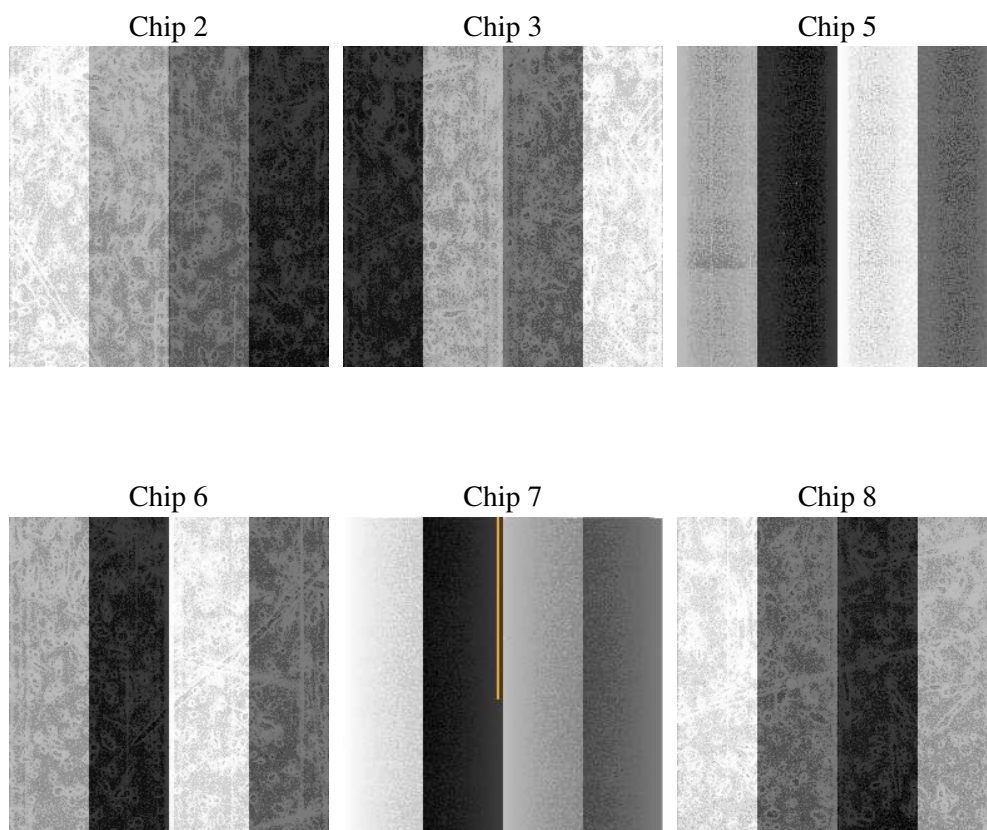
2 OBI

2.1 OBI

2.1.1 Images



2.1.2 Bias



2.1.3 Parameters

obi_num	3
ascdsver	7.6.9
caldbver	3.2.3
date	2006-10-09T15:22:20
revision	2

sched_exp_time	9000.000000
ontime	8728.0148828924
ontime2	8724.7739126384
ontime3	8728.0148828924
ontime5	8728.0148828924
ontime6	8728.0148828924
ontime7	8728.0148828924
ontime8	8724.7739325166
l1events	392052

2.1.4 Events

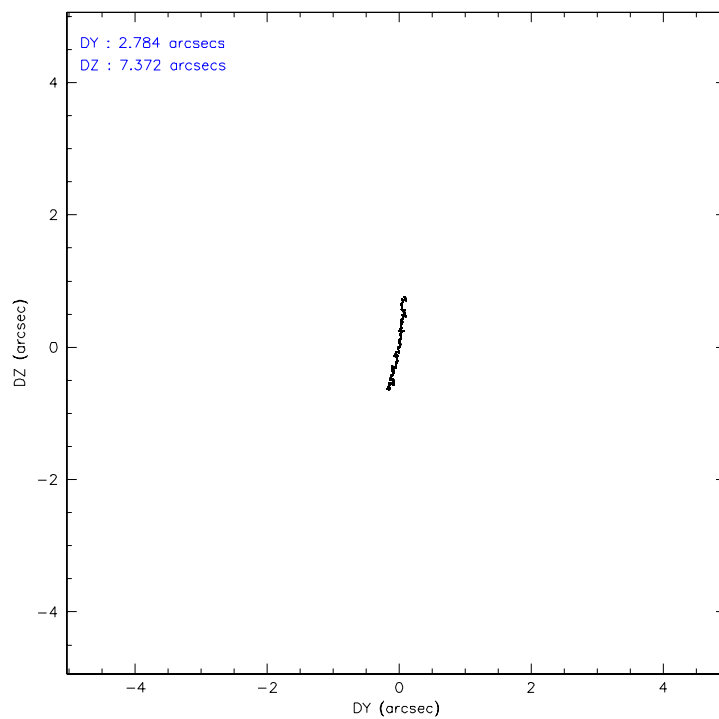
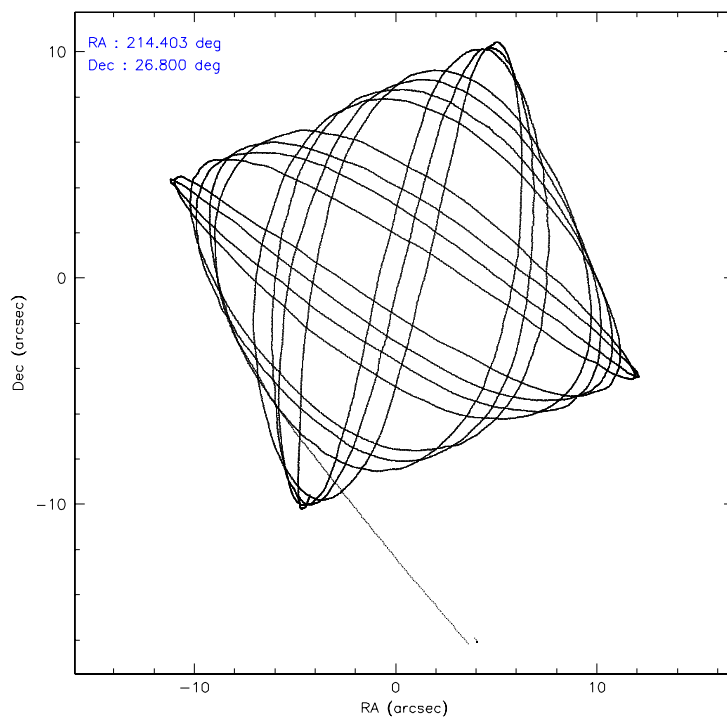
	ccd 2	ccd 3	ccd 5	ccd 6	ccd 7	ccd 8
level 1 events	55574	53716	80131	58292	73241	71098
rejected events	49022	47405	45090	51721	44986	57102
rejected %	88%	88%	56%	88%	61%	80%

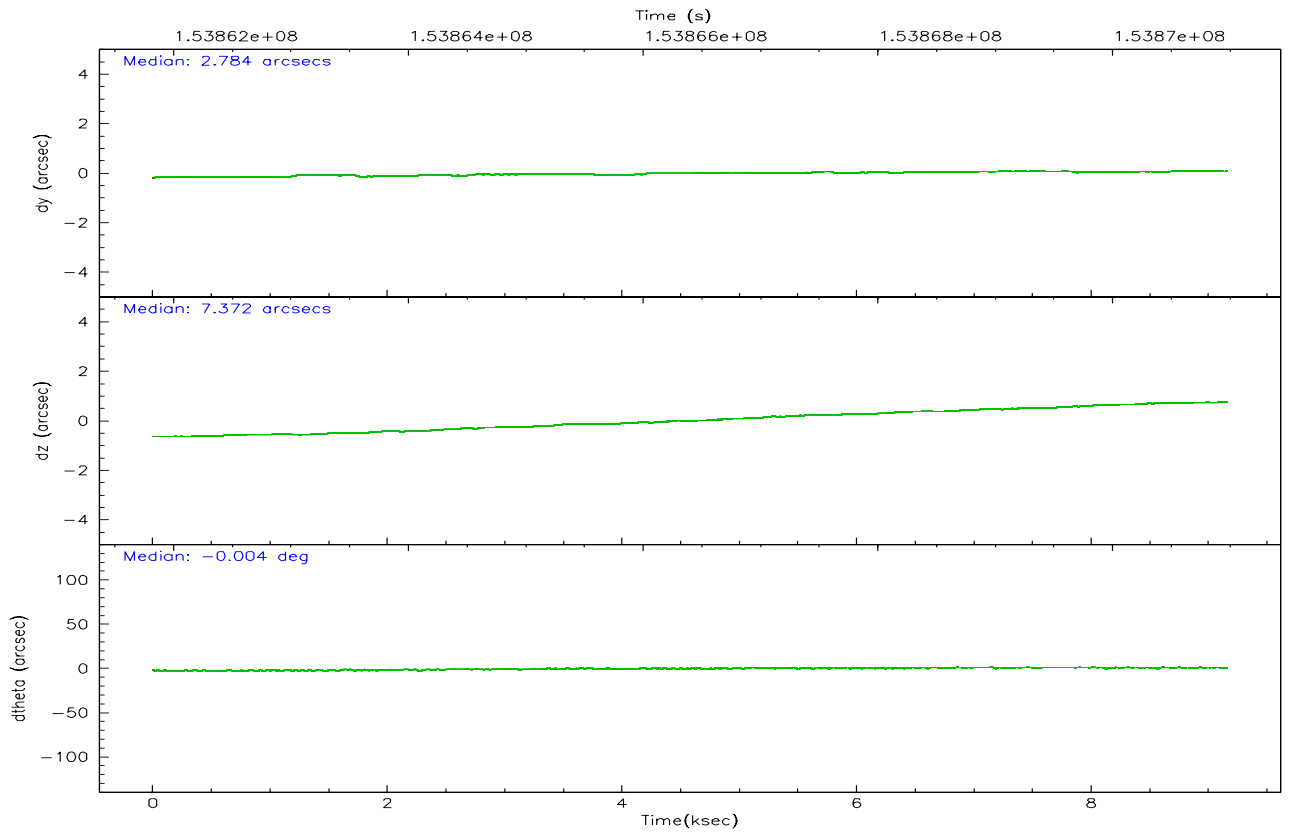
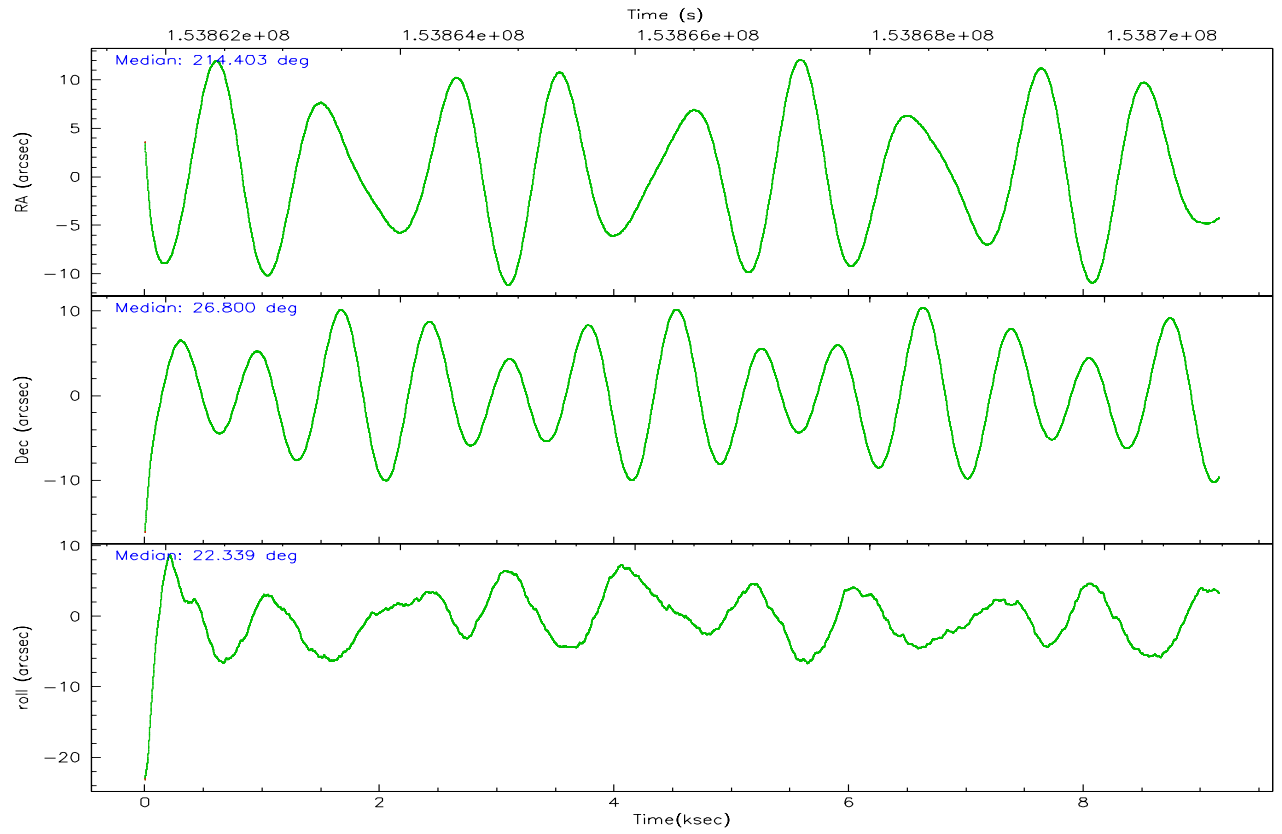
	ccd 2	ccd 3	ccd 5	ccd 6	ccd 7	ccd 8
grade 0 events	2994	2785	2276	2745	1792	4355
	5%	5%	2%	4%	2%	6%
grade 1 events	39	43	92	24	39	43
	0%	0%	0%	0%	0%	0%
grade 2 events	1237	1157	10751	1290	6975	3131
	2%	2%	13%	2%	9%	4%
grade 3 events	642	633	795	624	1480	1460
	1%	1%	0%	1%	2%	2%
grade 4 events	647	621	766	629	1402	1343
	1%	1%	0%	1%	1%	1%
grade 5 events	2149	2234	3748	2546	4871	3306
	3%	4%	4%	4%	6%	4%
grade 6 events	1035	1119	20459	1285	16617	3707
	1%	2%	25%	2%	22%	5%
grade 7 events	46831	45124	41244	49149	40065	53753
	84%	84%	51%	84%	54%	75%

2.2 Compared Parameters

Parameter	Planned	Actual	Parameter	Planned	Actual
Instrument	ACIS	ACIS	Obspar format version number	6	6
Detector	ACIS-235678	ACIS-235678	Obspar file type	PREDICTED	ACTUAL
Grating	NONE	NONE	Obspar update status	NONE	UPDATED
Data mode	FAINT	FAINT	Number of optional ACIS chips dropped	0	0
Observation mode	POINTING	POINTING	On-chip summing requested	N	N
Pointing RA	214.385195	214.403483370491	Subarray requested	NONE	NONE
Pointing Dec	26.778044	26.79981087796146	Alternating exposures requested	N	N
Pointing Roll	22.192233	22.3405965498744	Primary exposure time	0.000000	3.2
SIM focus pos (mm)	-0.684267	-0.6828225247311905			
SIM defocus (mm)	0	0.001444936568705701			
SIM translation stage pos (mm)	-190.132523	-190.1400660498719			
SIM translation stage offset (mm)	0	0.00754346686406393			
Observation start time	153861984.184000	153860935.75439			
Observation start date	2002-11-16T19:25:20	2002-11-16T19:08:55			
Observation end time	153870984.184000	153871531.17983			
Observation end date	2002-11-16T21:55:20	2002-11-16T22:05:31			
Read mode	TIMED	TIMED			

2.3 Aspect



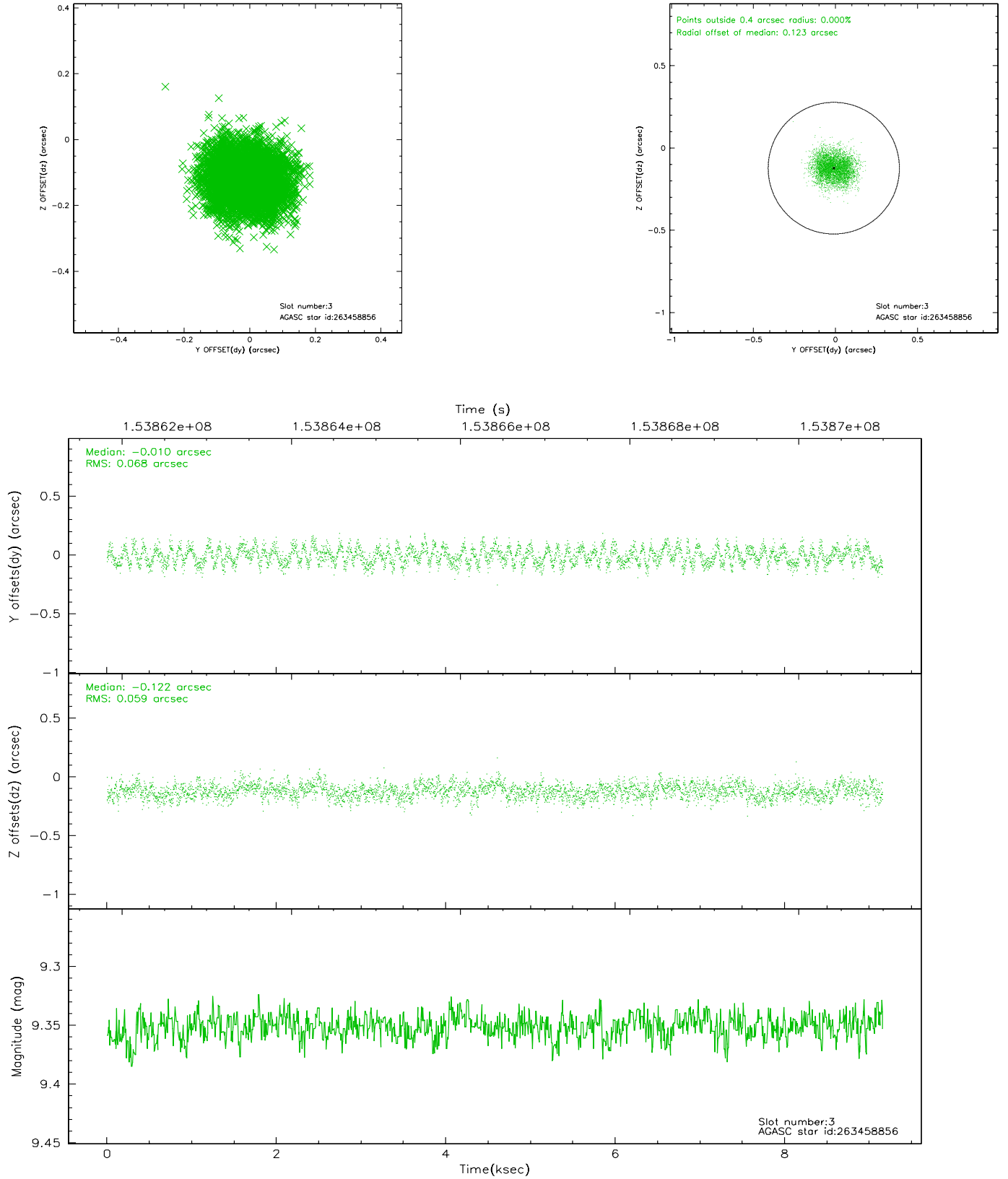


Slot Statistics

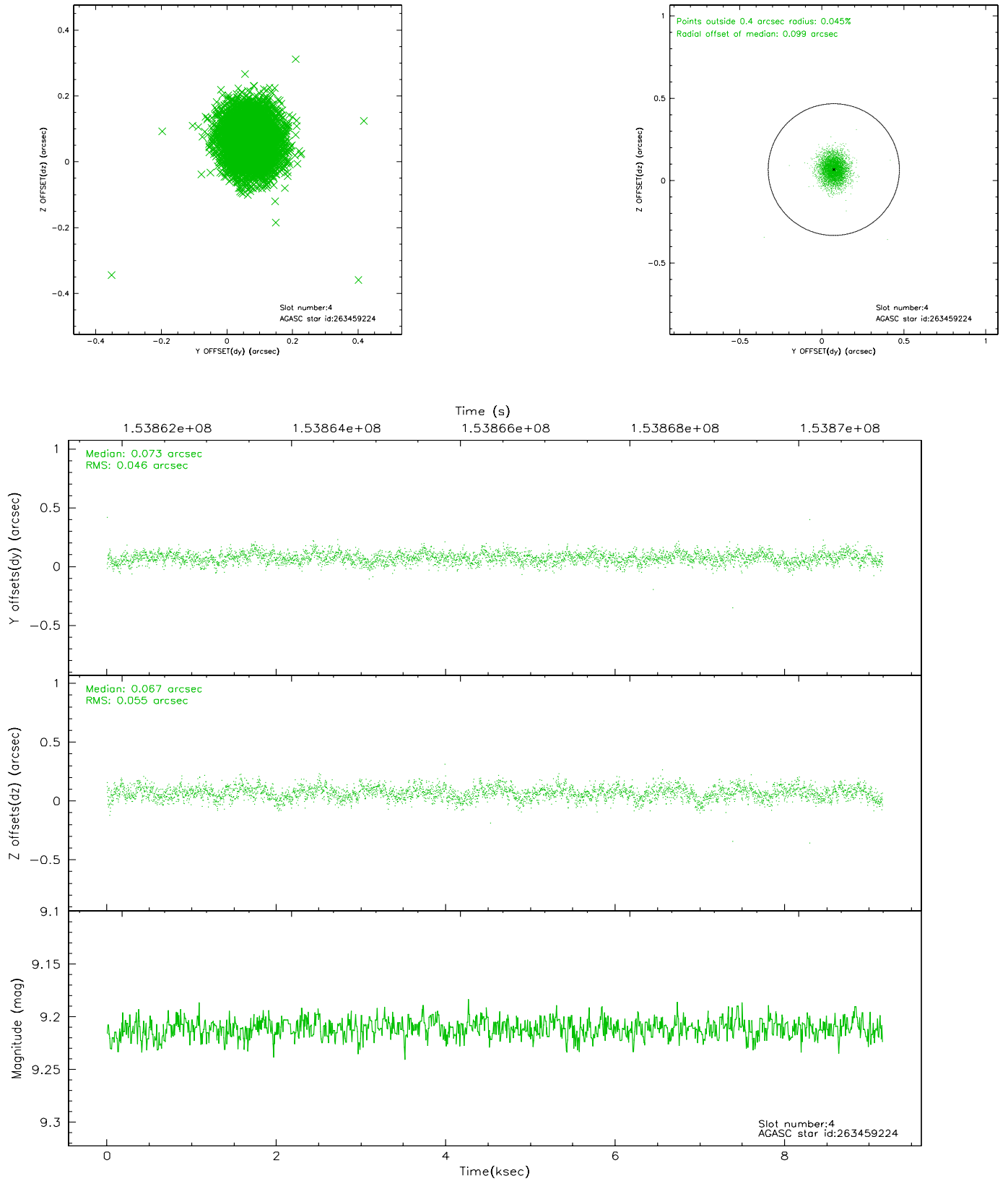
slot	status	id	mag	n_pts	med_dy	med_dz	dr1	dr2	ra	dec	mean_y	mean_z
0	FID	ACIS-S-2	7.11	2234	-0.005	0.022	0.011	0.017	0.000000	0.000000	-755.41	-1728.55
1	FID	ACIS-S-4	7.20	2233	-0.051	-0.003	0.005	0.009	0.000000	0.000000	2157.56	179.29
2	FID	ACIS-S-5	7.24	2233	0.026	-0.010	0.011	0.017	0.000000	0.000000	-1807.45	173.64
3	GUIDE	263458856	9.35	4465	-0.010	-0.122	0.097	0.149	214.297460	27.284111	429.32	1792.57
4	GUIDE	263459224	9.21	4467	0.073	0.067	0.074	0.121	214.219599	26.365853	-1053.61	-1171.87
5	GUIDE	263459608	10.04	4390	-0.098	-0.167	0.126	0.204	214.858921	27.290229	2101.40	1136.08
6	GUIDE	263464184	9.96	4461	0.182	0.148	0.107	0.176	214.167336	26.155562	-1496.27	-1808.46
7	GUIDE	263589920	9.40	4460	-0.149	0.076	0.095	0.158	215.086125	26.988335	2370.92	-143.21

2.4 Star Slots

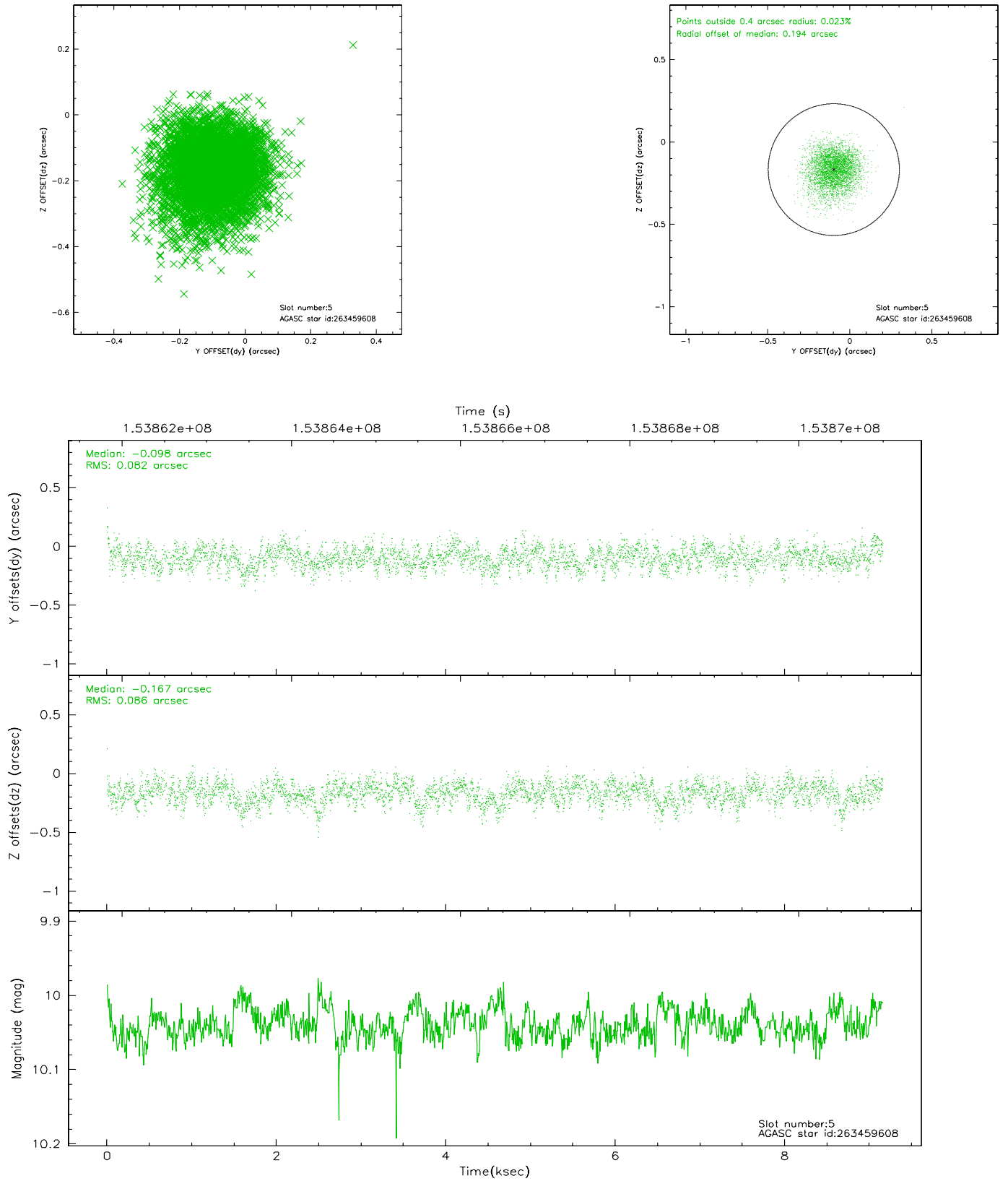
2.4.1 Slot 3



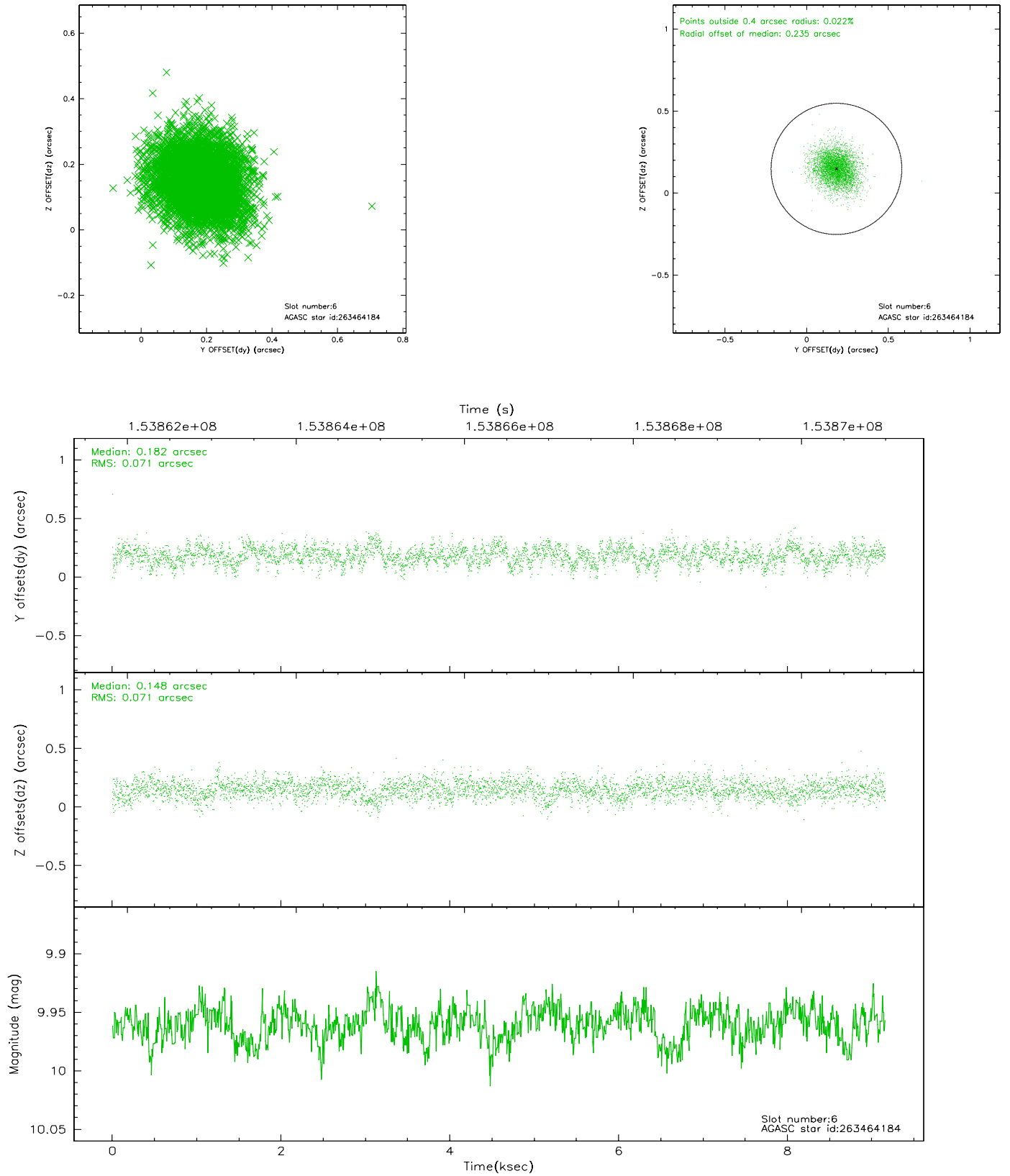
2.4.2 Slot 4



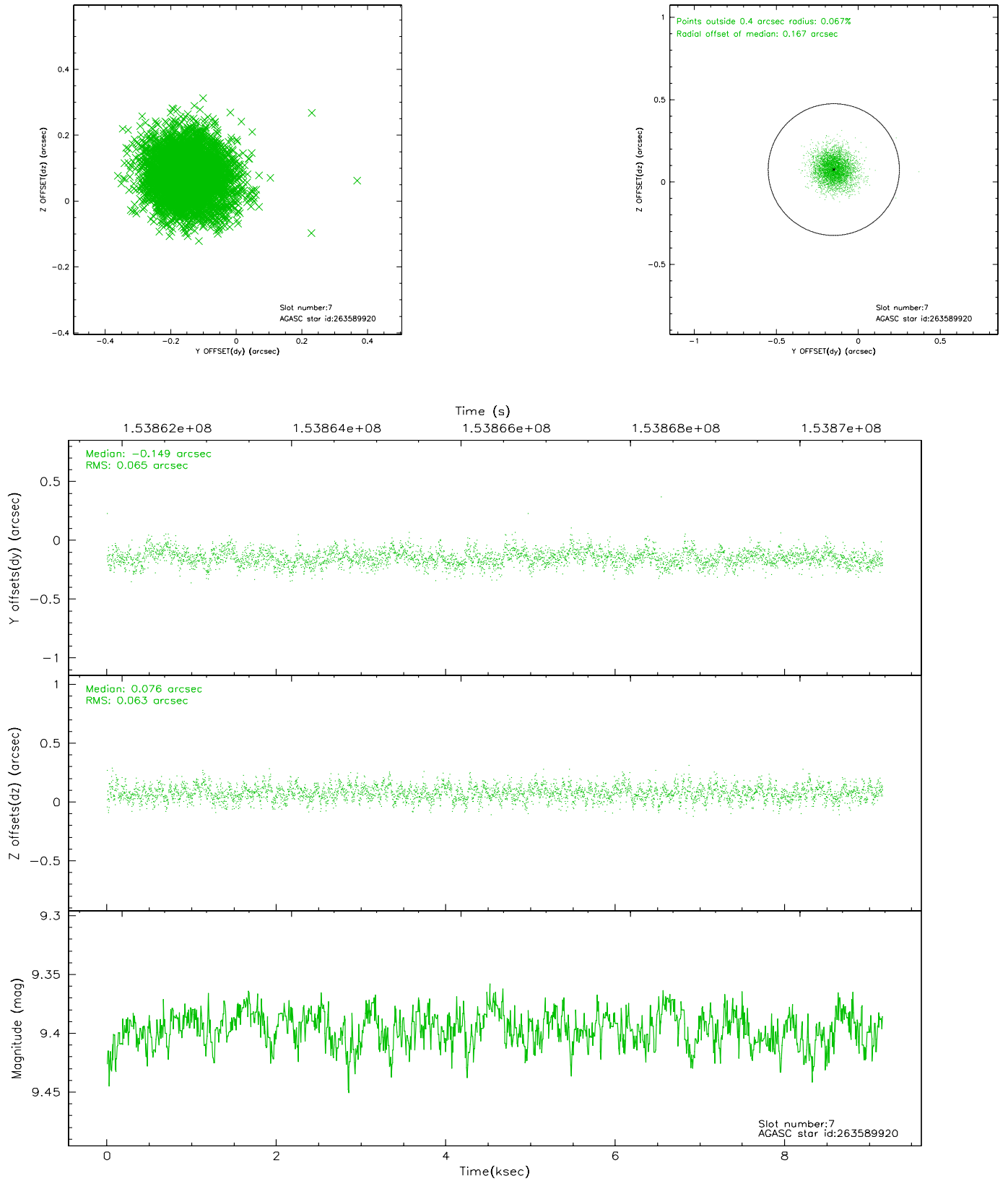
2.4.3 Slot 5



2.4.4 Slot 6

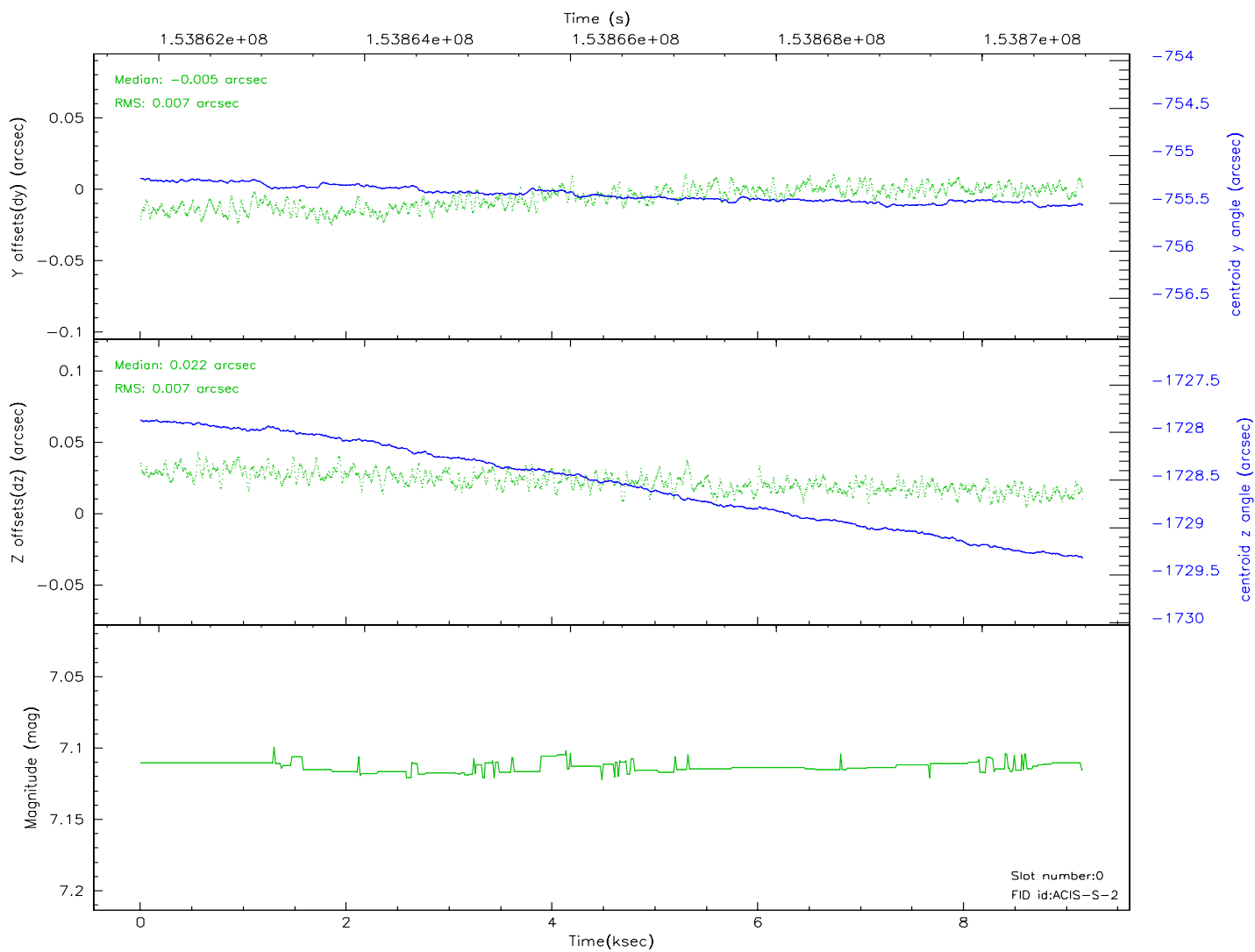
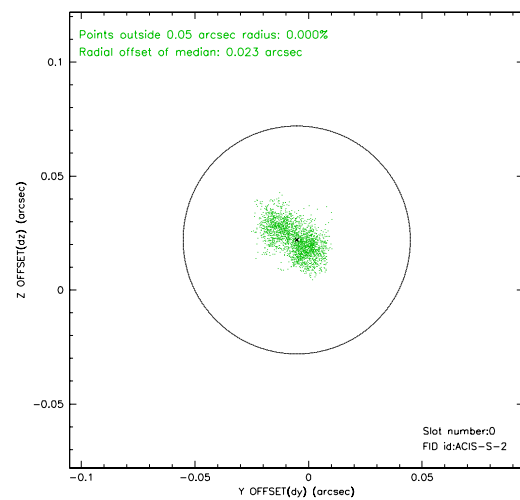
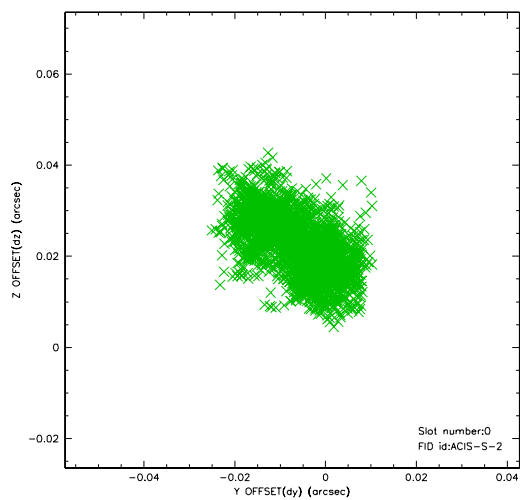


2.4.5 Slot 7

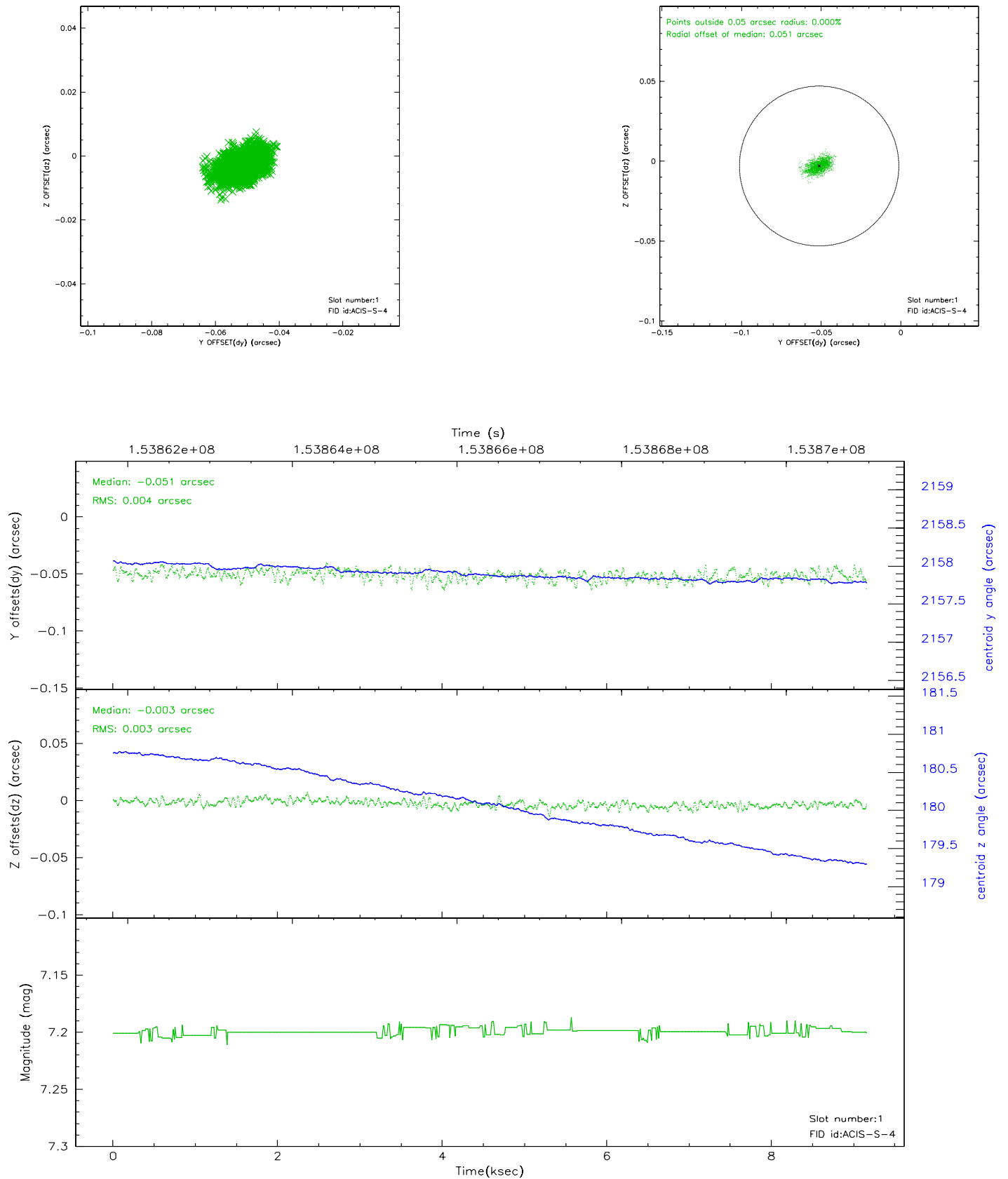


2.5 FID Slots

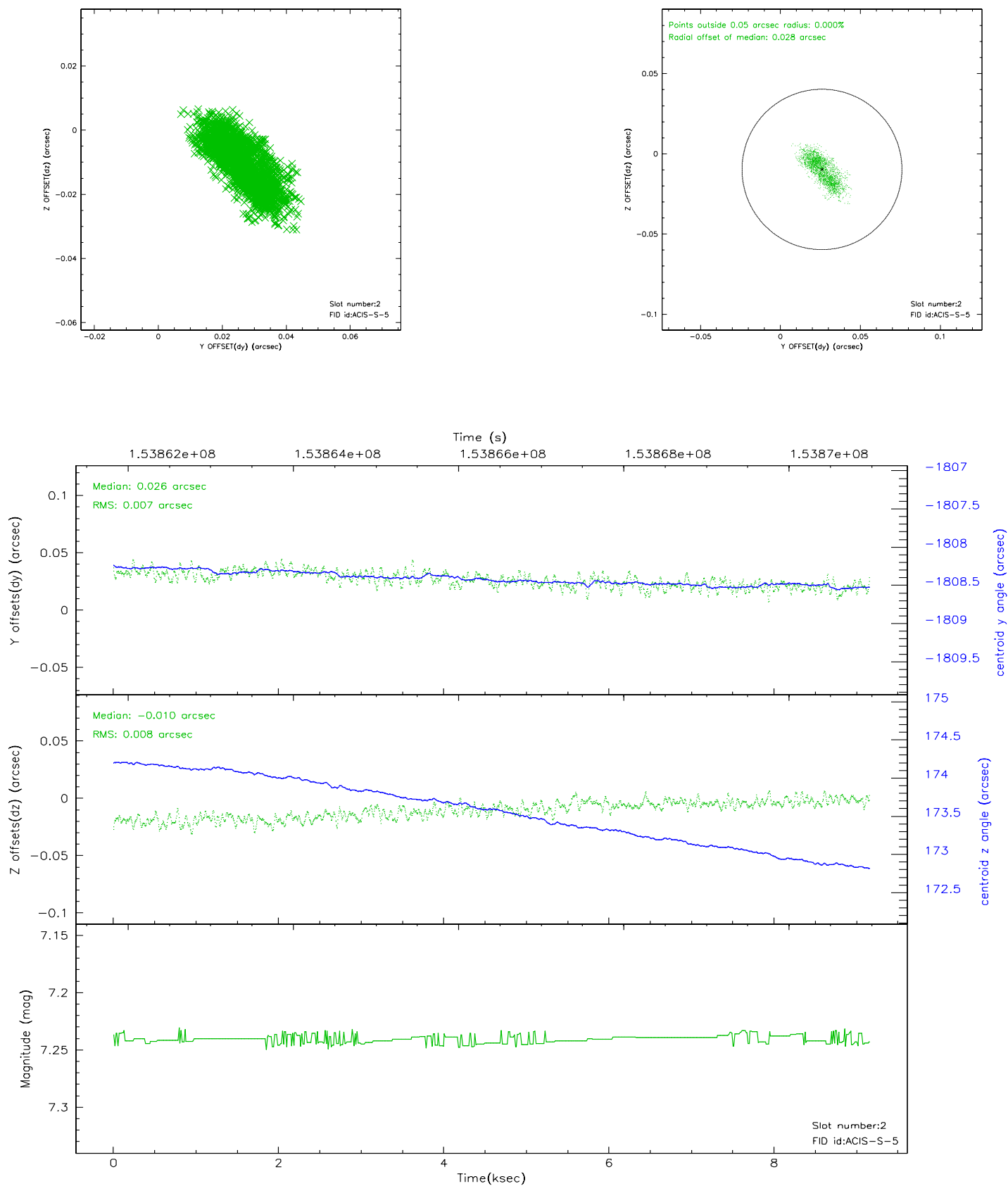
2.5.1 Slot 0



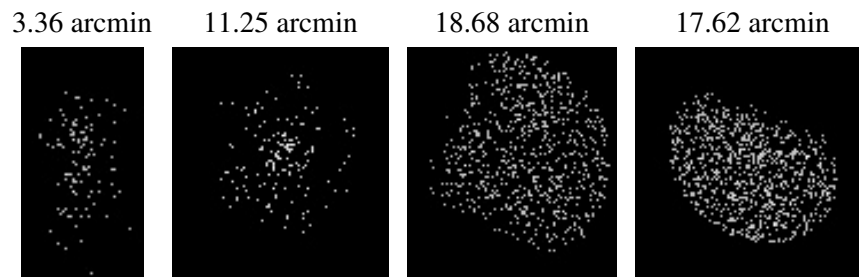
2.5.2 Slot 1



2.5.3 Slot 2



3 Point Sources



A Summary

A.1 Status

V&V Scientist	Beth Sundheim
V&V Date (YYYY-MM-DD)	2006.10.10
V&V Edition	1
V&V Disposition and Status	OK
V&V Charge Time	8.723

A.2 Comments