

# V&V Reference Report

## L2 ASCDS Version : 7.6.9

Observation 3061 - L2 Version 001  
Chandra X-Ray Center

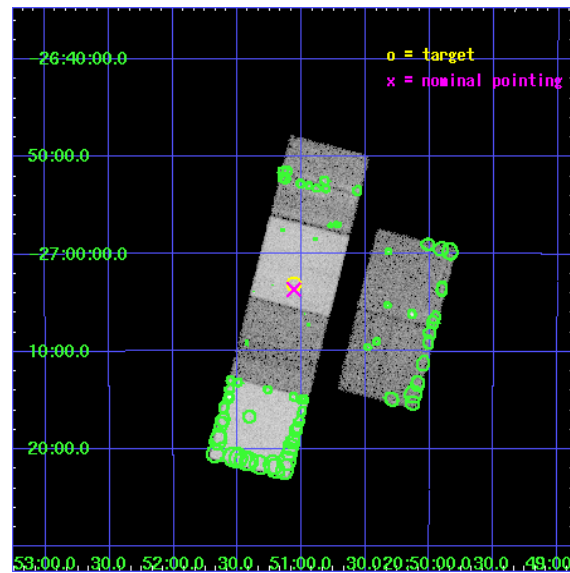
L2 Processing Date : Oct 9 2006

## Contents

<b>1</b>	<b>Front</b>	<b>2</b>
<b>2</b>	<b>OBI</b>	<b>3</b>
2.1	OBI . . . . .	3
2.1.1	Images . . . . .	3
2.1.2	Bias . . . . .	3
2.1.3	Parameters . . . . .	4
2.1.4	Events . . . . .	4
2.2	Compared Parameters . . . . .	5
2.3	Aspect . . . . .	6
2.4	Star Slots . . . . .	9
2.4.1	Slot 3 . . . . .	9
2.4.2	Slot 4 . . . . .	10
2.4.3	Slot 5 . . . . .	11
2.4.4	Slot 6 . . . . .	12
2.4.5	Slot 7 . . . . .	13
2.5	FID Slots . . . . .	14
2.5.1	Slot 0 . . . . .	14
2.5.2	Slot 1 . . . . .	15
2.5.3	Slot 2 . . . . .	16
<b>3</b>	<b>Point Sources</b>	<b>17</b>
<b>A</b>	<b>Summary</b>	<b>18</b>
A.1	Status . . . . .	18
A.2	Comments . . . . .	18

# 1 Front

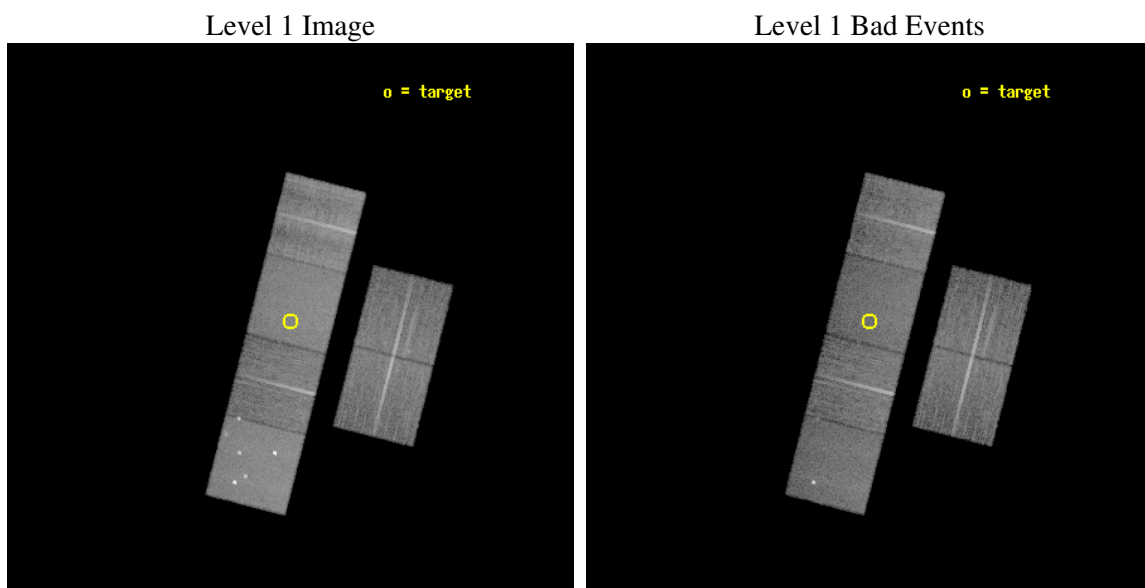
seq_num	700500
obs_id	3061
title	X-RAY STUDIES OF HIGH REDSHIFT RADIO GALAXIES
observer	Dr. Chris Carilli
object	2048-272
dtcycle	0
cycle	P
ra_targ	312.764167
dec_targ	-27.051278
ra_nom	312.76494511609
dec_nom	-27.060969495666
roll_nom	284.31229232685
revision	2
ontime	19555.199927151
livetime	19307.580210946
ontime2	19555.199927151
ontime3	19551.958956897
ontime5	19555.199927151
ontime6	19551.95893696
ontime7	19555.199927151
ontime8	19551.958956897
l2events	206660



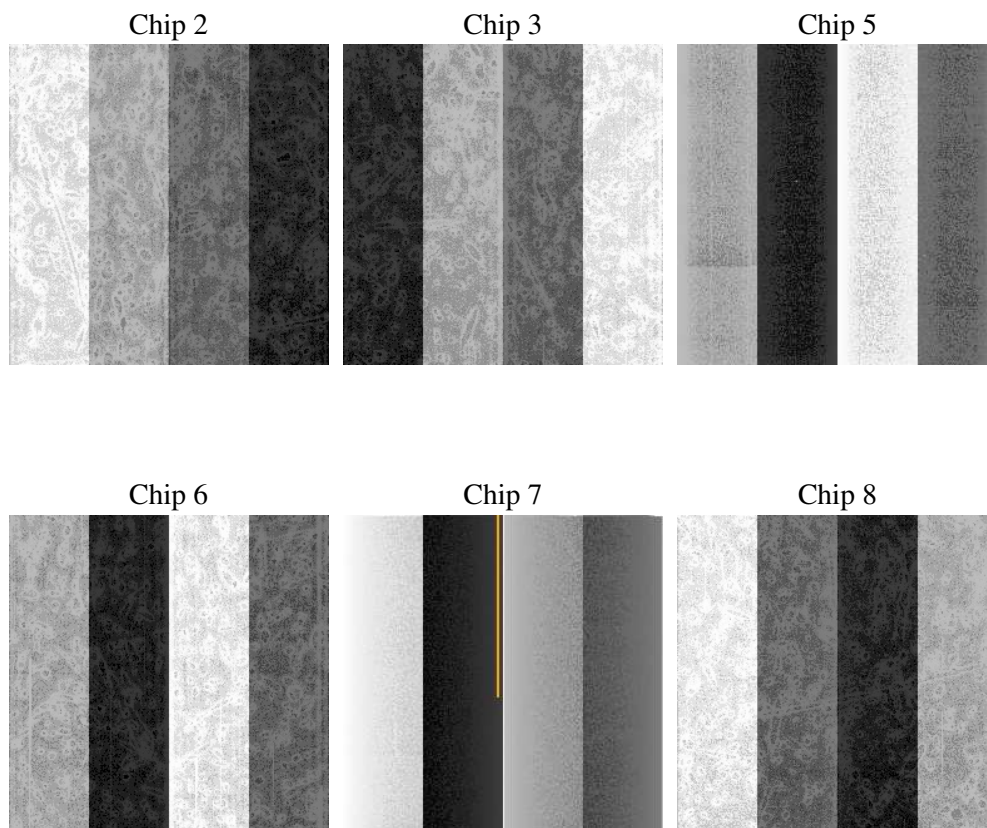
## 2 OBI

### 2.1 OBI

#### 2.1.1 Images



#### 2.1.2 Bias



### 2.1.3 Parameters

obi_num	1
ascdsver	7.6.9
caldsver	3.2.3
date	2006-10-09T11:42:23
revision	2

sched_exp_time	19500.000000
ontime	19614.531056076
ontime2	19614.531026155
ontime3	19611.290055901
ontime5	19614.531056076
ontime6	19611.290035963
ontime7	19614.531056076
ontime8	19611.290085822
l1events	901546

### 2.1.4 Events

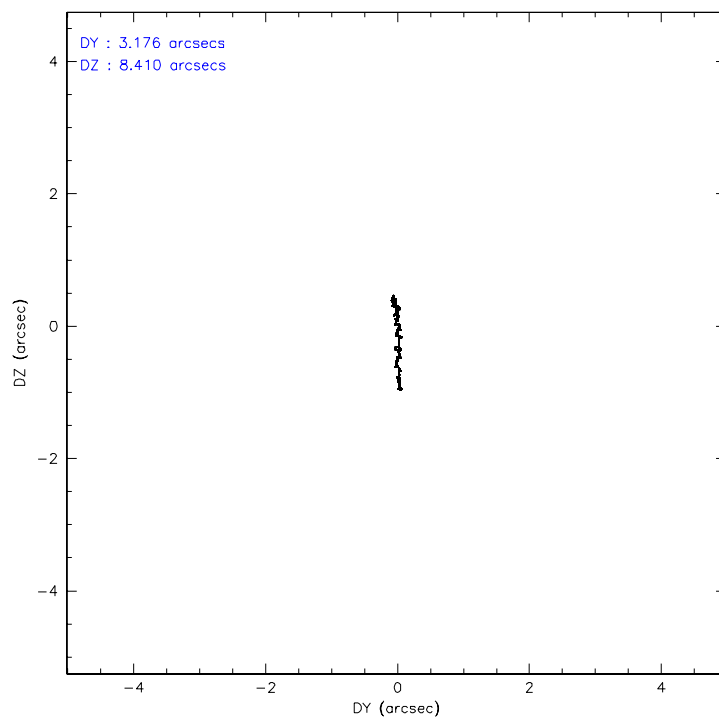
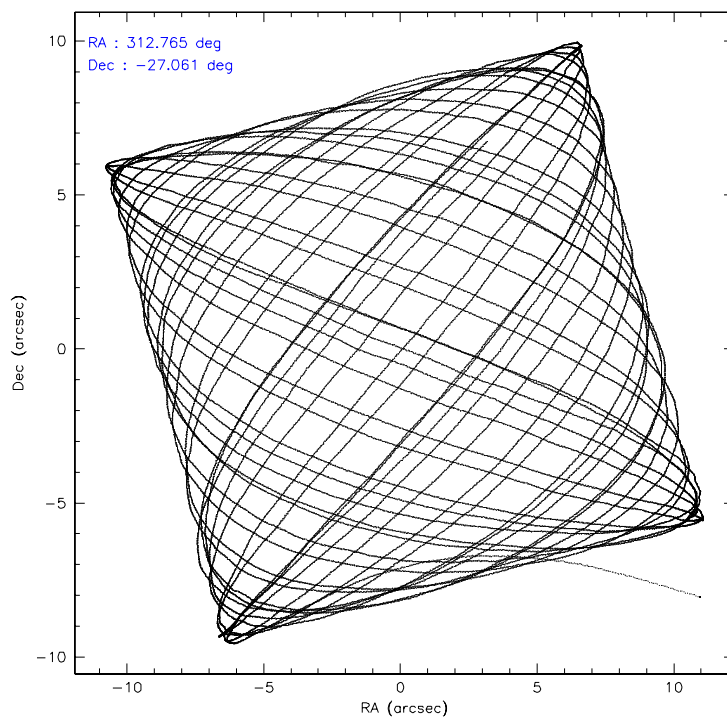
	ccd 2	ccd 3	ccd 5	ccd 6	ccd 7	ccd 8
level 1 events	127866	122180	189112	128281	163778	170329
rejected events	110695	105449	99557	110084	97973	120737
rejected %	86%	86%	52%	85%	59%	70%

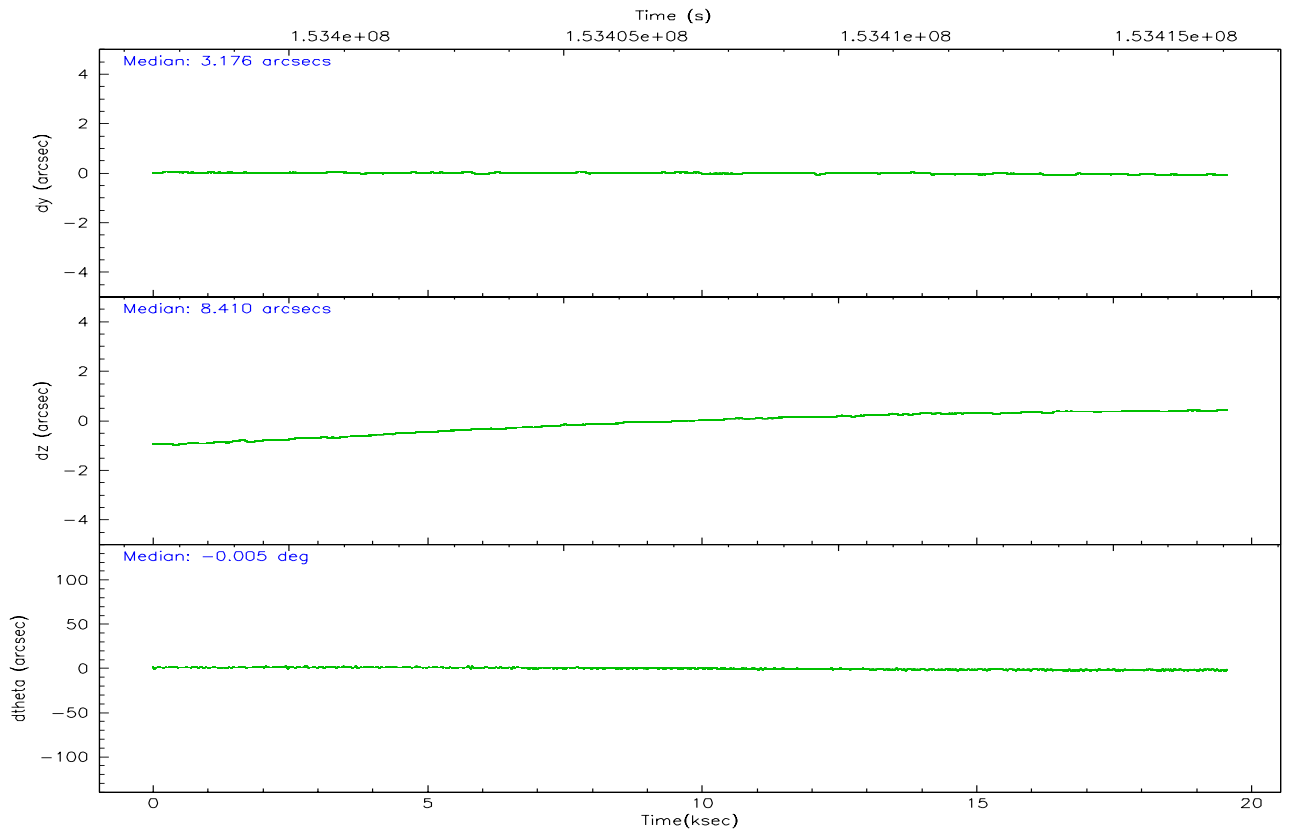
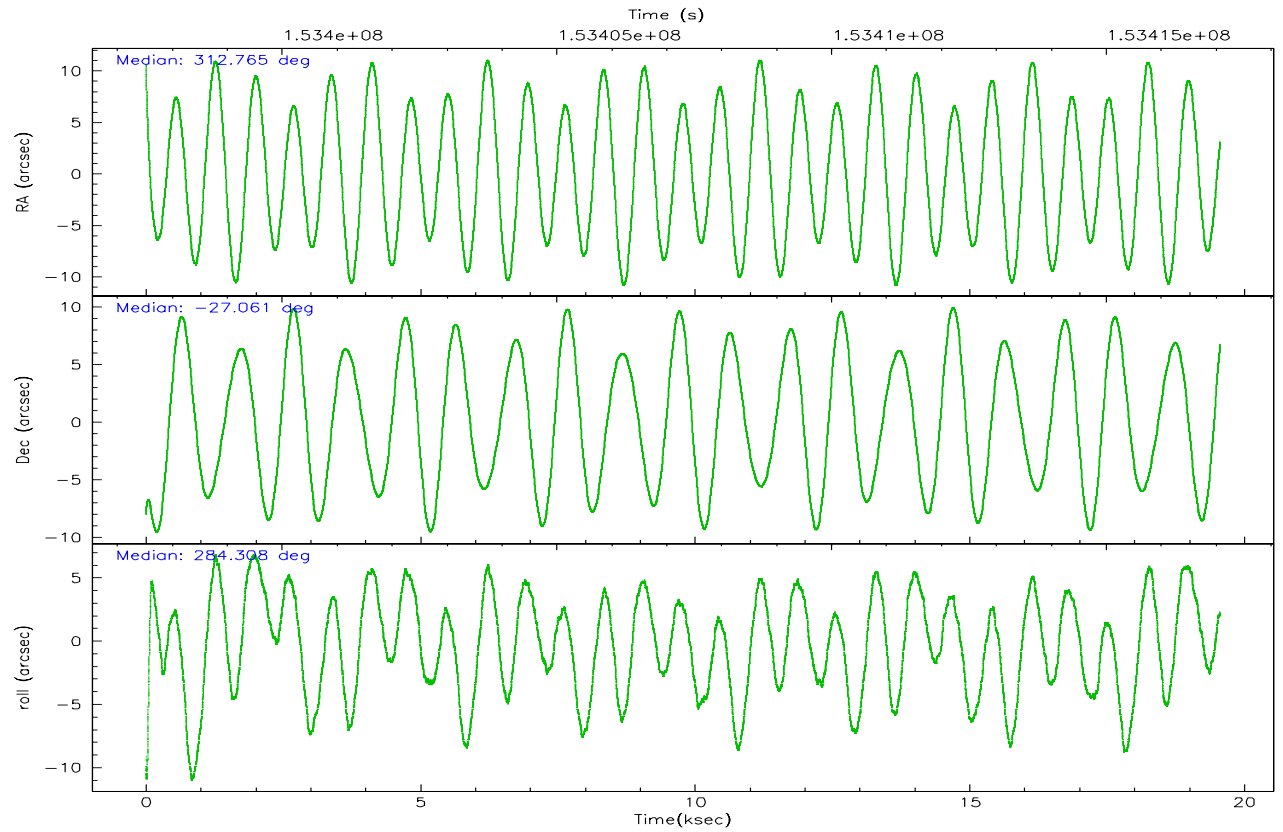
	ccd 2	ccd 3	ccd 5	ccd 6	ccd 7	ccd 8
grade 0 events	8226	7967	12976	8066	4107	16888
	6%	6%	6%	6%	2%	9%
grade 1 events	80	88	231	65	98	139
	0%	0%	0%	0%	0%	0%
grade 2 events	3574	3378	26256	4118	15967	9272
	2%	2%	13%	3%	9%	5%
grade 3 events	1393	1358	2646	1468	3444	6359
	1%	1%	1%	1%	2%	3%
grade 4 events	1432	1436	2116	1430	3250	5805
	1%	1%	1%	1%	1%	3%
grade 5 events	4635	5076	9544	5296	10371	7091
	3%	4%	5%	4%	6%	4%
grade 6 events	2611	2645	45837	3161	39256	11430
	2%	2%	24%	2%	23%	6%
grade 7 events	105915	100232	89506	104677	87285	113345
	82%	82%	47%	81%	53%	66%

## 2.2 Compared Parameters

Parameter	Planned	Actual	Parameter	Planned	Actual
Instrument	ACIS	ACIS	Obspar format version number	6	6
Detector	ACIS-235678	ACIS-235678	Obspar file type	PREDICTED	ACTUAL
Grating	NONE	NONE	Obspar update status	NONE	UPDATED
Data mode	FAINT	FAINT	Number of optional ACIS chips dropped	0	0
Observation mode	POINTING	POINTING	On-chip summing requested	N	N
Pointing RA	312.743316	312.7649451160939	Subarray requested	NONE	NONE
Pointing Dec	-27.041698	-27.06096949566579	Alternating exposures requested	N	N
Pointing Roll	284.145843	284.3122923268464	Primary exposure time	0.000000	3.2
SIM focus pos (mm)	-0.684267	-0.6828225247311905			
SIM defocus (mm)	0	0.001444936568705701			
SIM translation stage pos (mm)	-190.132523	-190.1400660498719			
SIM translation stage offset (mm)	0	0.00754346686406393			
Observation start time	153397578.184000	153396581.01008			
Observation start date	2002-11-11T10:25:14	2002-11-11T10:09:41			
Observation end time	153417078.184000	153417770.32346			
Observation end date	2002-11-11T15:50:14	2002-11-11T16:02:50			
Read mode	TIMED	TIMED			

## 2.3 Aspect





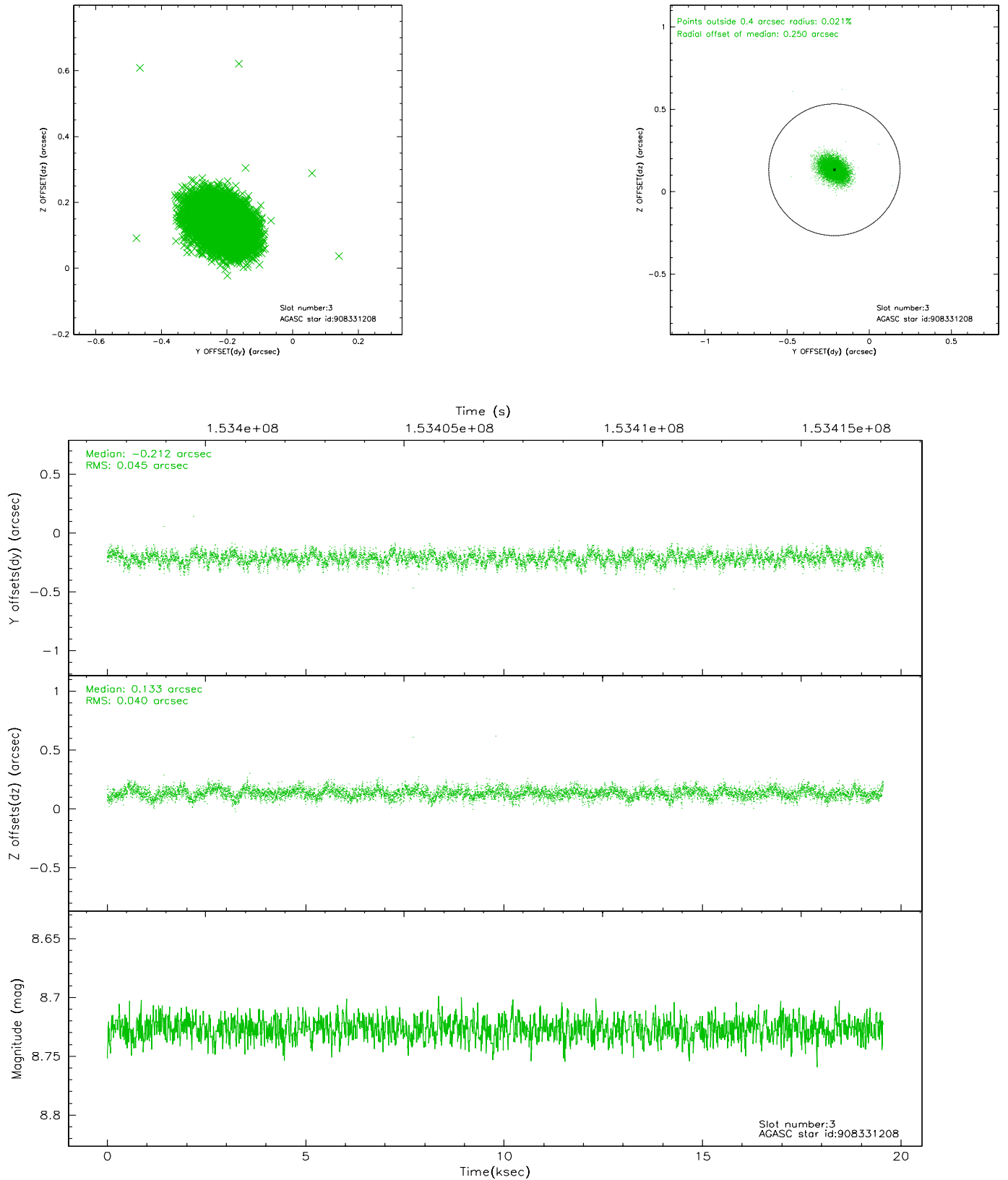
### Slot Statistics

slot	status	id	mag	n_pts	med_dy	med_dz	dr1	dr2	ra	dec	mean_y	mean_z
0	FID	ACIS-S-1	7.19	4771	0.016	0.026	0.021	0.041	0.000000	0.000000	940.22	-1725.12
1	FID	ACIS-S-5	7.24	4772	-0.007	0.034	0.009	0.014	0.000000	0.000000	-1808.67	172.27
2	FID	ACIS-S-6	7.36	4770	-0.030	-0.047	0.014	0.036	0.000000	0.000000	405.54	816.35
3	GUIDE	908331208	8.73	9540	-0.212	0.133	0.063	0.105	312.844396	-26.779792	-834.95	545.63
4	GUIDE	908334784	9.75	9525	0.145	-0.033	0.123	0.199	312.595222	-27.683804	2126.63	-1022.51
5	GUIDE	908335408	9.82	9536	0.068	-0.019	0.101	0.168	312.406524	-27.474218	1248.88	-1423.92
6	GUIDE	908330440	8.91	9539	-0.077	-0.053	0.075	0.117	312.139064	-26.993928	-635.71	-1838.75
7	GUIDE	908334944	6.91	9541	0.073	-0.028	0.069	0.104	312.890039	-27.244769	823.97	276.64

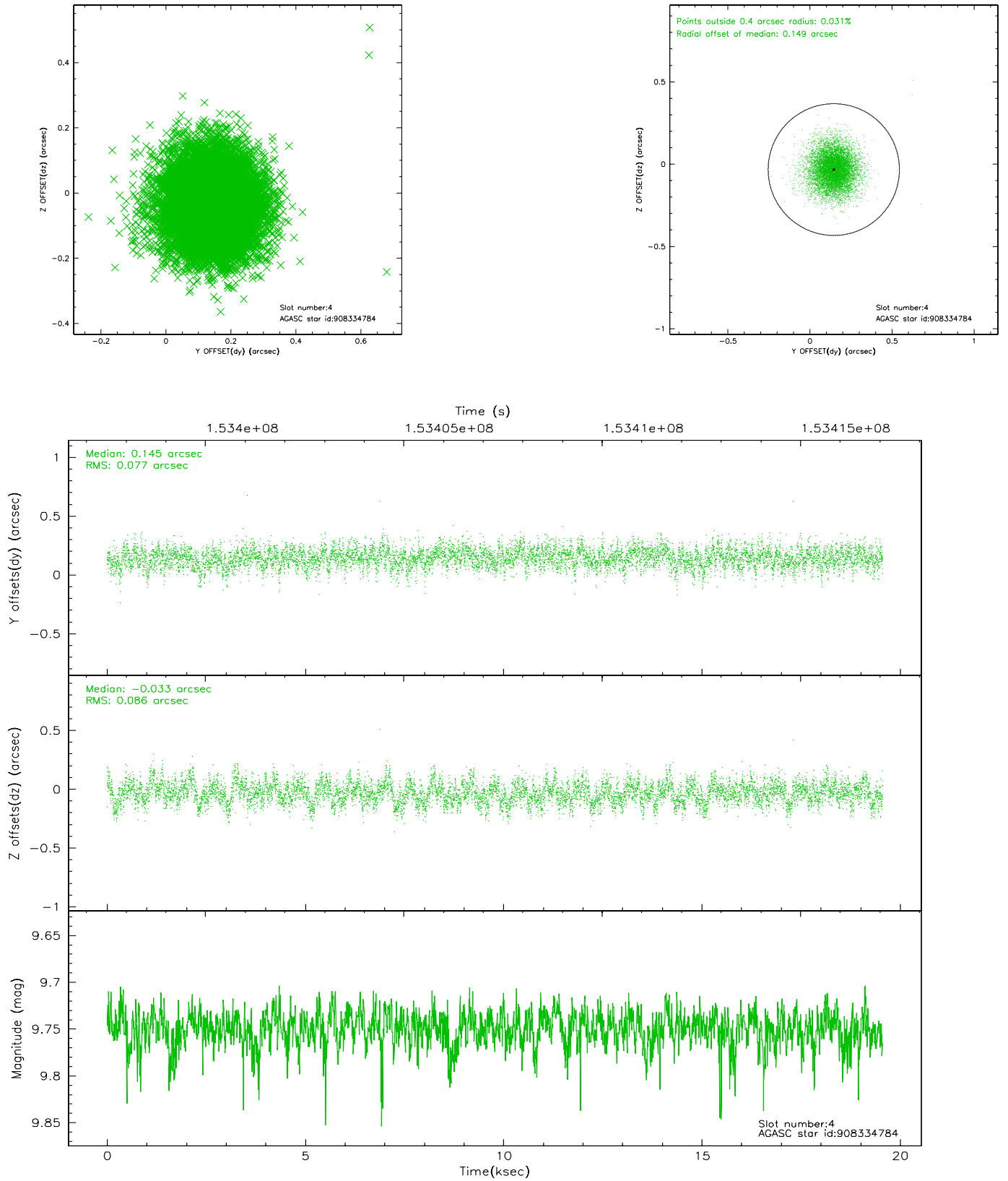


## 2.4 Star Slots

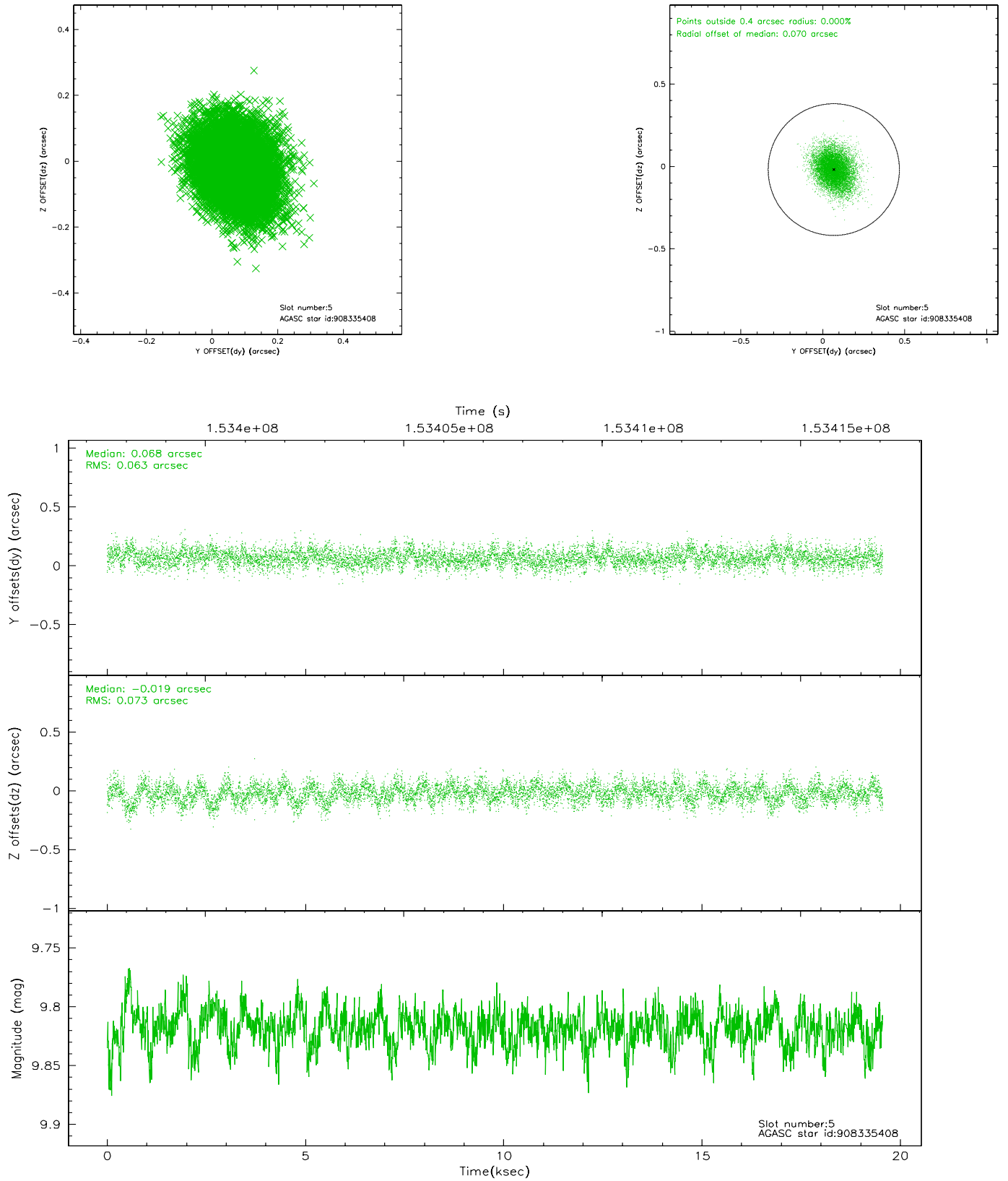
### 2.4.1 Slot 3



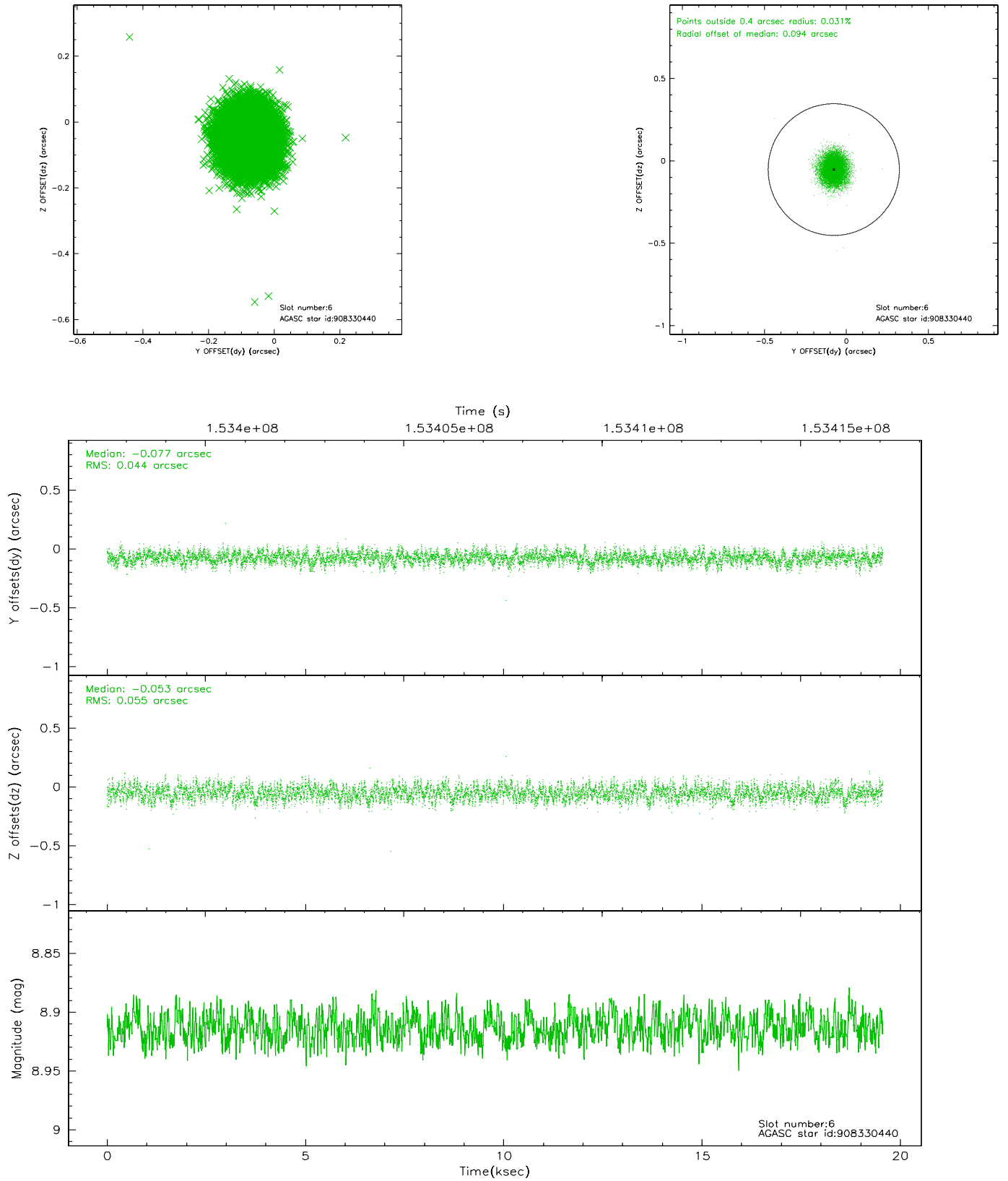
## 2.4.2 Slot 4



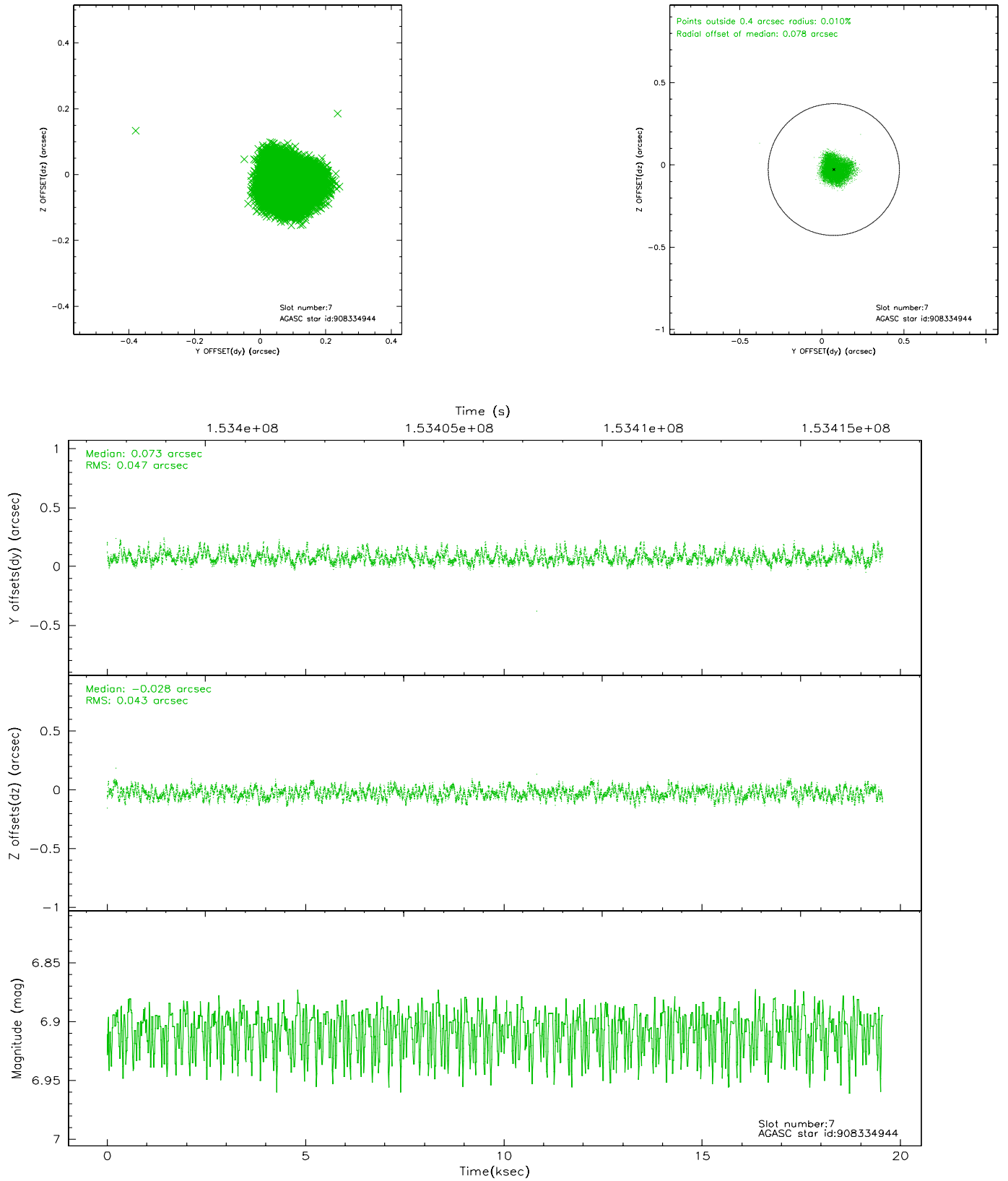
### 2.4.3 Slot 5



## 2.4.4 Slot 6

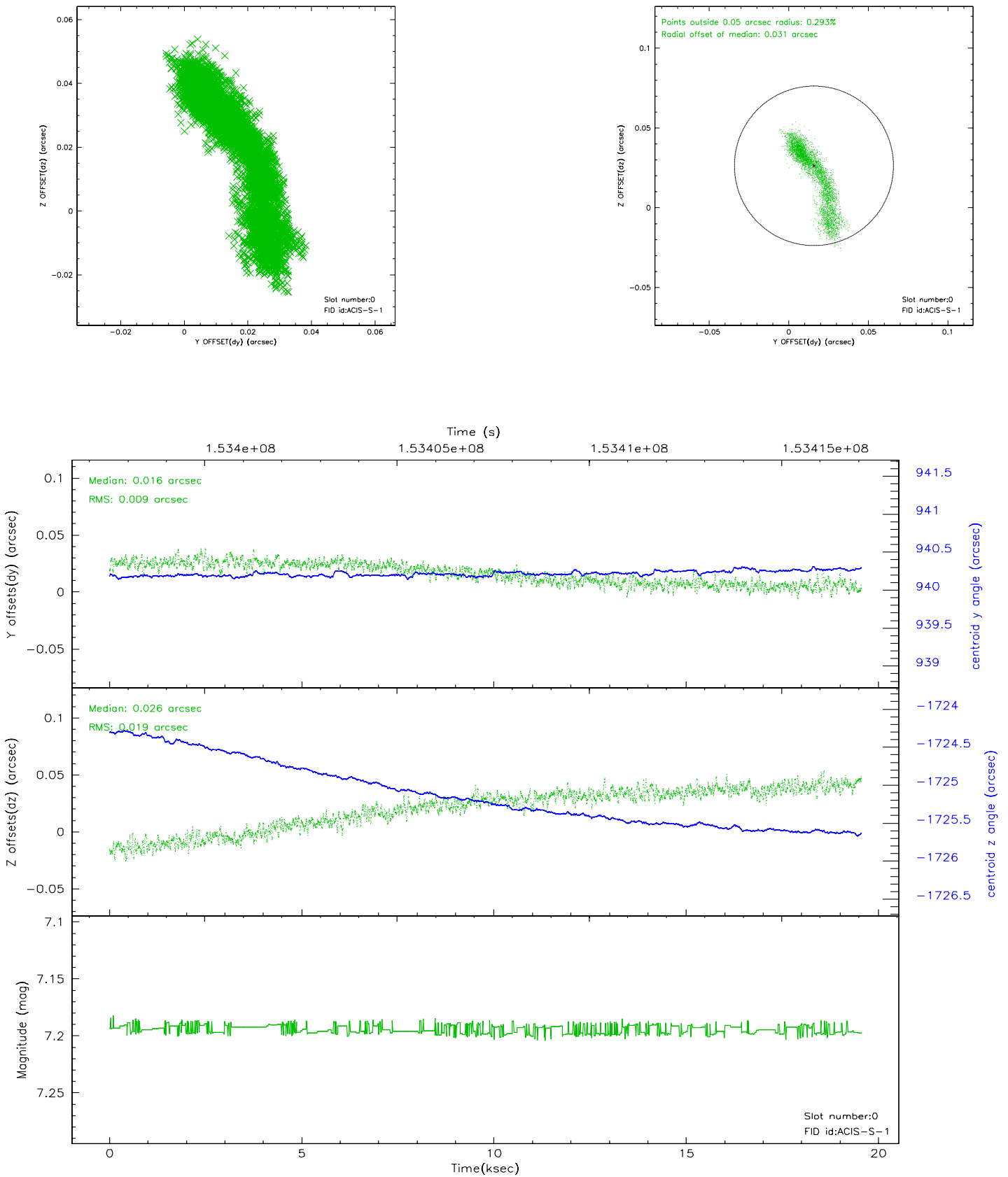


## 2.4.5 Slot 7

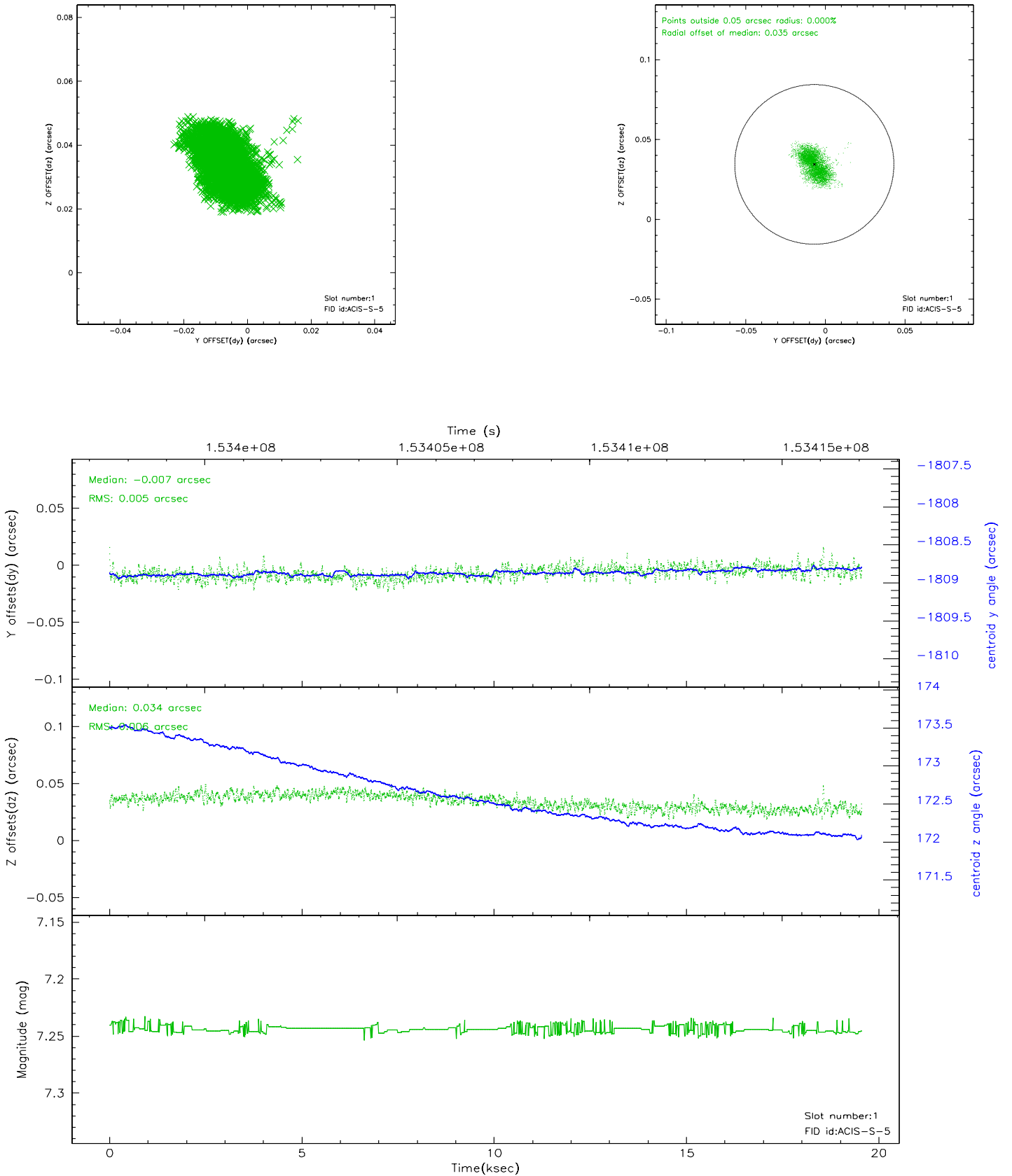


## 2.5 FID Slots

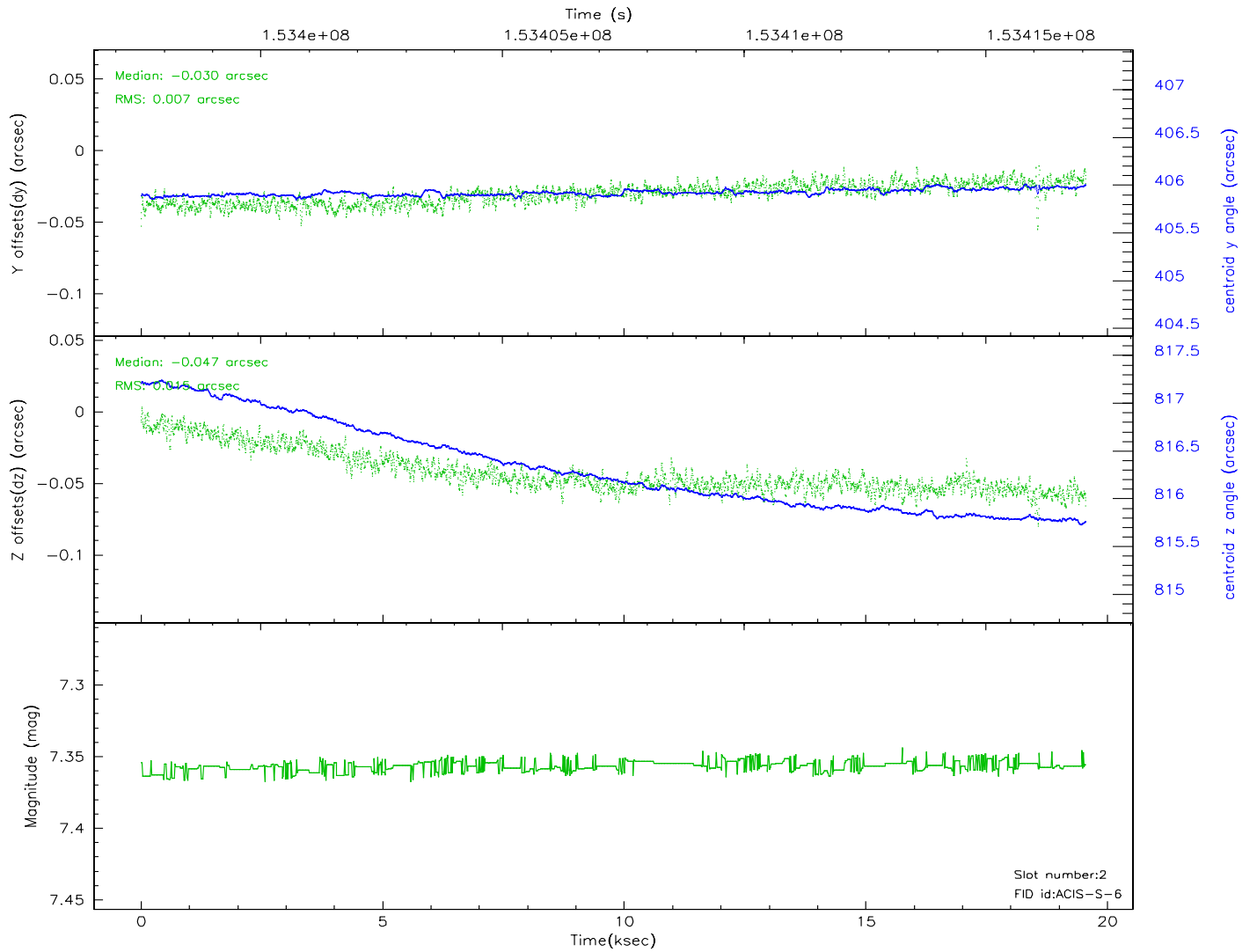
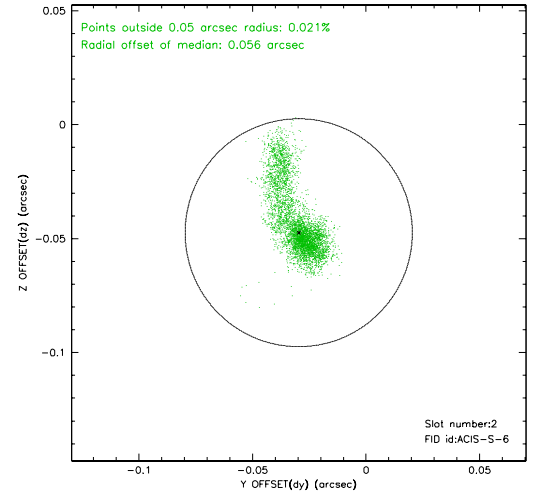
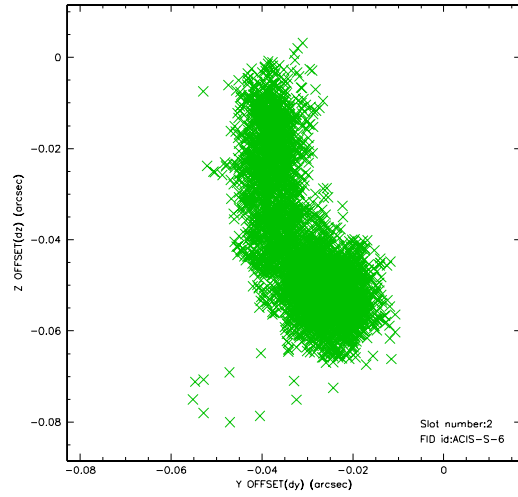
### 2.5.1 Slot 0



## 2.5.2 Slot 1

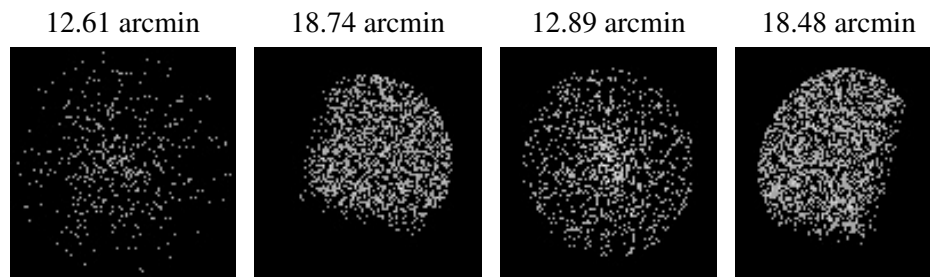


### 2.5.3 Slot 2





### 3 Point Sources



## A Summary

### A.1 Status

V&V Scientist	Jen Lauer
V&V Date (YYYY-MM-DD)	2006.10.10
V&V Edition	1
V&V Disposition and Status	OK
V&V Charge Time	19.555

### A.2 Comments