

V&V Reference Report

L2 ASCDS Version : 7.6.9

Observation 3056 - L2 Version 001
Chandra X-Ray Center

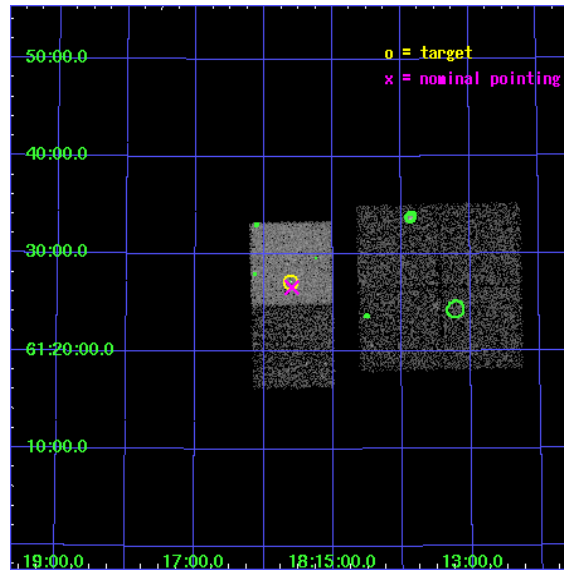
L2 Processing Date : Oct 4 2006

Contents

1	Front	2
2	OBI	3
2.1	OBI	3
2.1.1	Images	3
2.1.2	Bias	3
2.1.3	Parameters	4
2.1.4	Events	4
2.2	Compared Parameters	5
2.3	Aspect	6
2.4	Star Slots	9
2.4.1	Slot 3	9
2.4.2	Slot 4	10
2.4.3	Slot 5	11
2.4.4	Slot 6	12
2.4.5	Slot 7	13
2.5	FID Slots	14
2.5.1	Slot 0	14
2.5.2	Slot 1	15
2.5.3	Slot 2	16
3	Point Sources	17
A	Summary	18
A.1	Status	18
A.2	Comments	18

1 Front

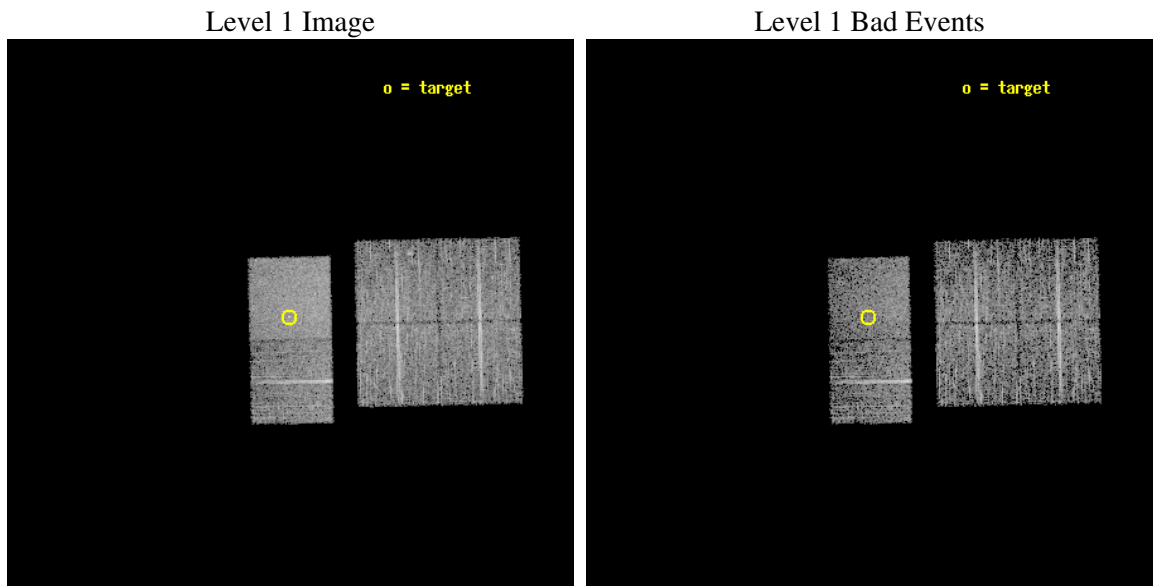
seq_num	700495
obs_id	3056
title	FRUSTRATED GPS QUASARS
observer	Dr. Willem De Vries
object	Q1815+614
dtcycle	0
cycle	P
ra_targ	273.902917
dec_targ	61.453194
ra_nom	273.89897567842
dec_nom	61.443623655196
roll_nom	268.76918369903
revision	2
ontime	4959.9999815226
livetime	4897.1934752031
ontime0	4959.9999815226
ontime1	4959.9999815226
ontime2	4959.9999815226
ontime3	4959.9999815226
ontime6	4959.9999815226
ontime7	4959.9999815226
l2events	31829



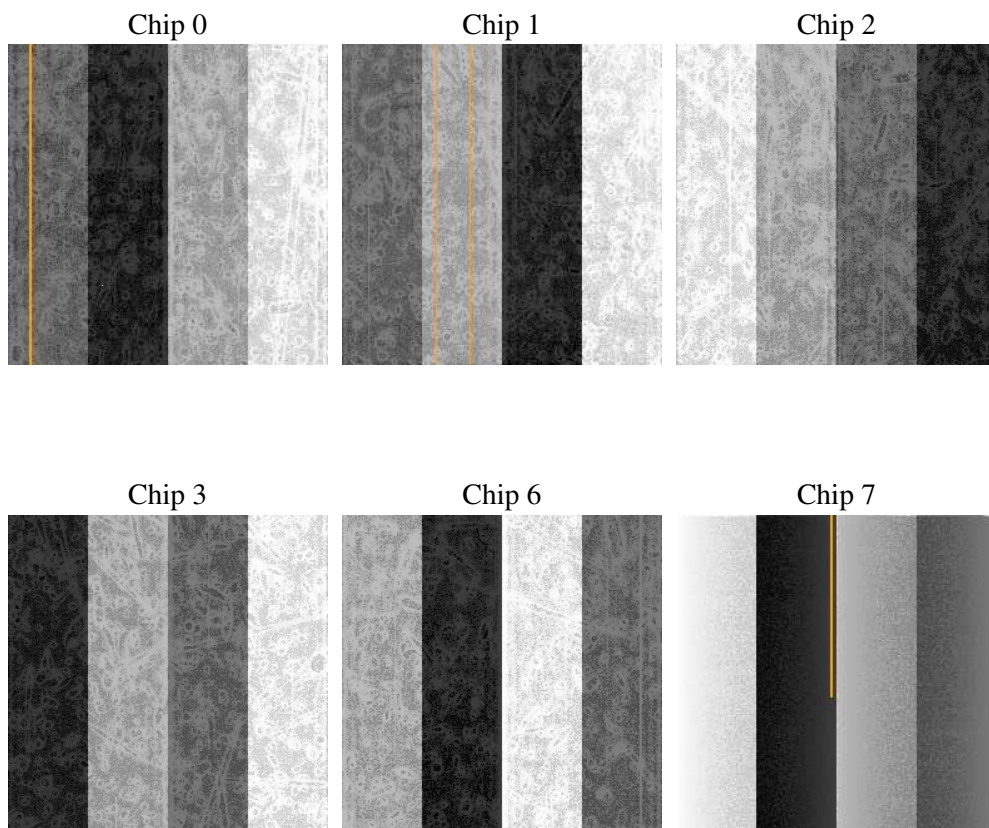
2 OBI

2.1 OBI

2.1.1 Images



2.1.2 Bias



2.1.3 Parameters

obi_num	0
ascdsver	7.6.9
caldsver	3.2.3
date	2006-10-04T17:58:01
revision	2

sched_exp_time	5000.000000
ontime	4965.2110756636
ontime0	4965.2110457718
ontime1	4965.2110756636
ontime2	4965.2110457718
ontime3	4965.2110756636
ontime6	4965.2110756636
ontime7	4965.2110756636
l1events	194962

2.1.4 Events

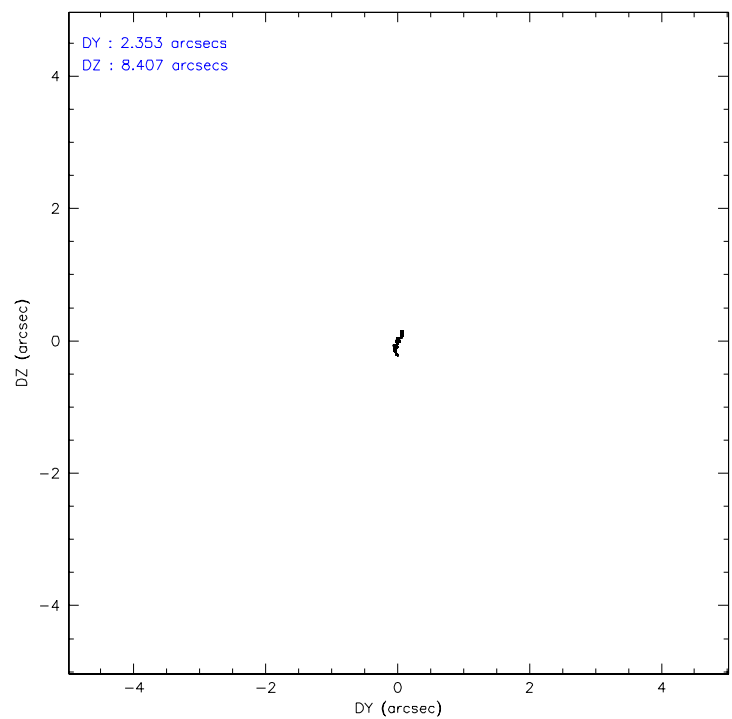
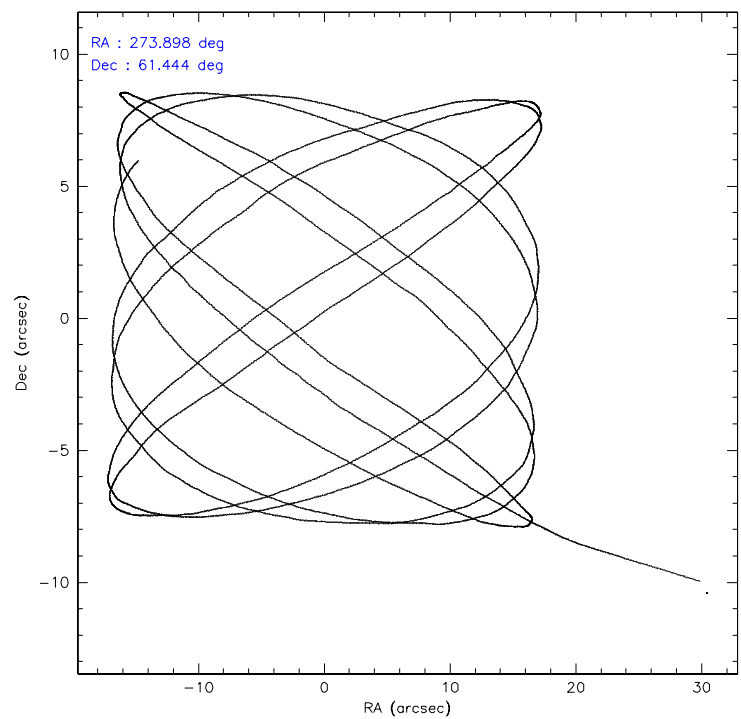
	ccd 0	ccd 1	ccd 2	ccd 3	ccd 6	ccd 7
level 1 events	30371	29269	32485	30720	30573	41544
rejected events	26527	25561	28790	26988	26879	25433
rejected %	87%	87%	88%	87%	87%	61%

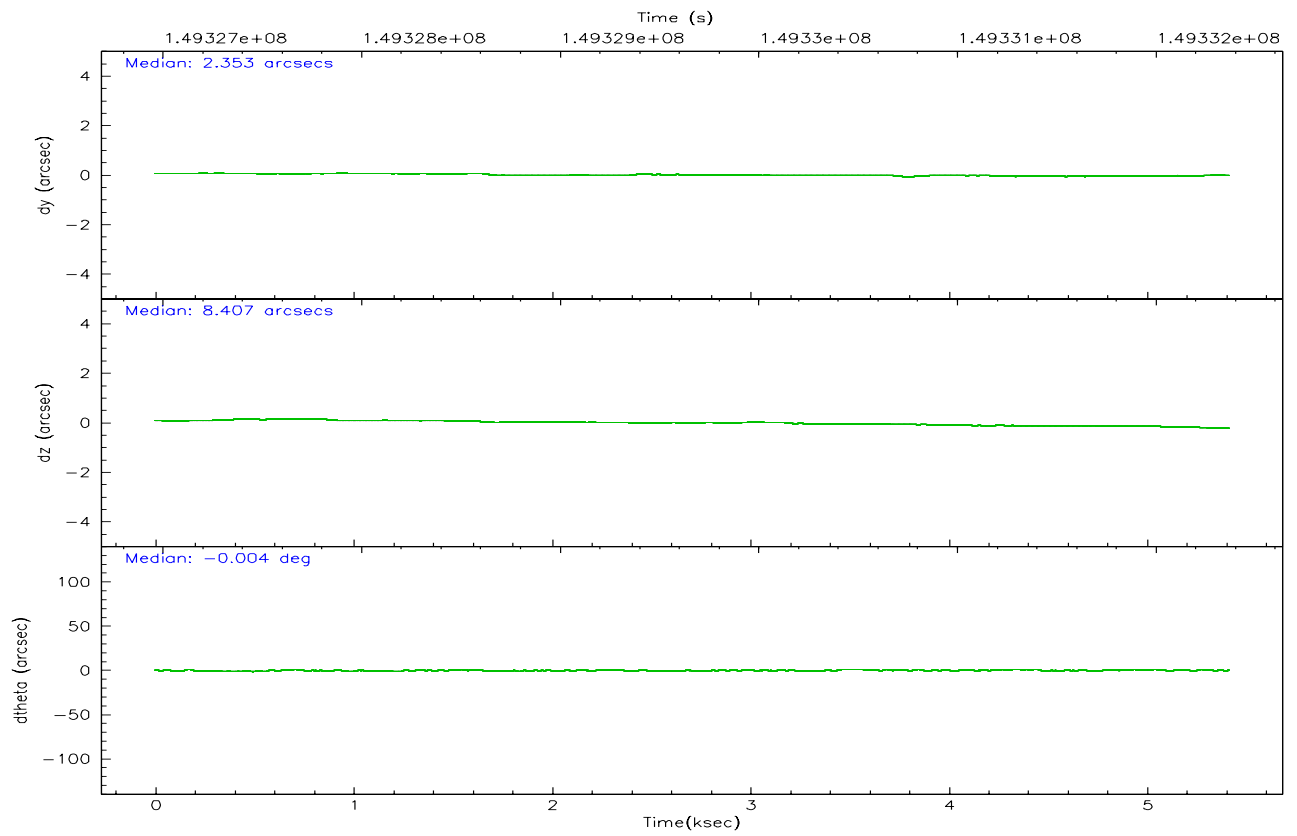
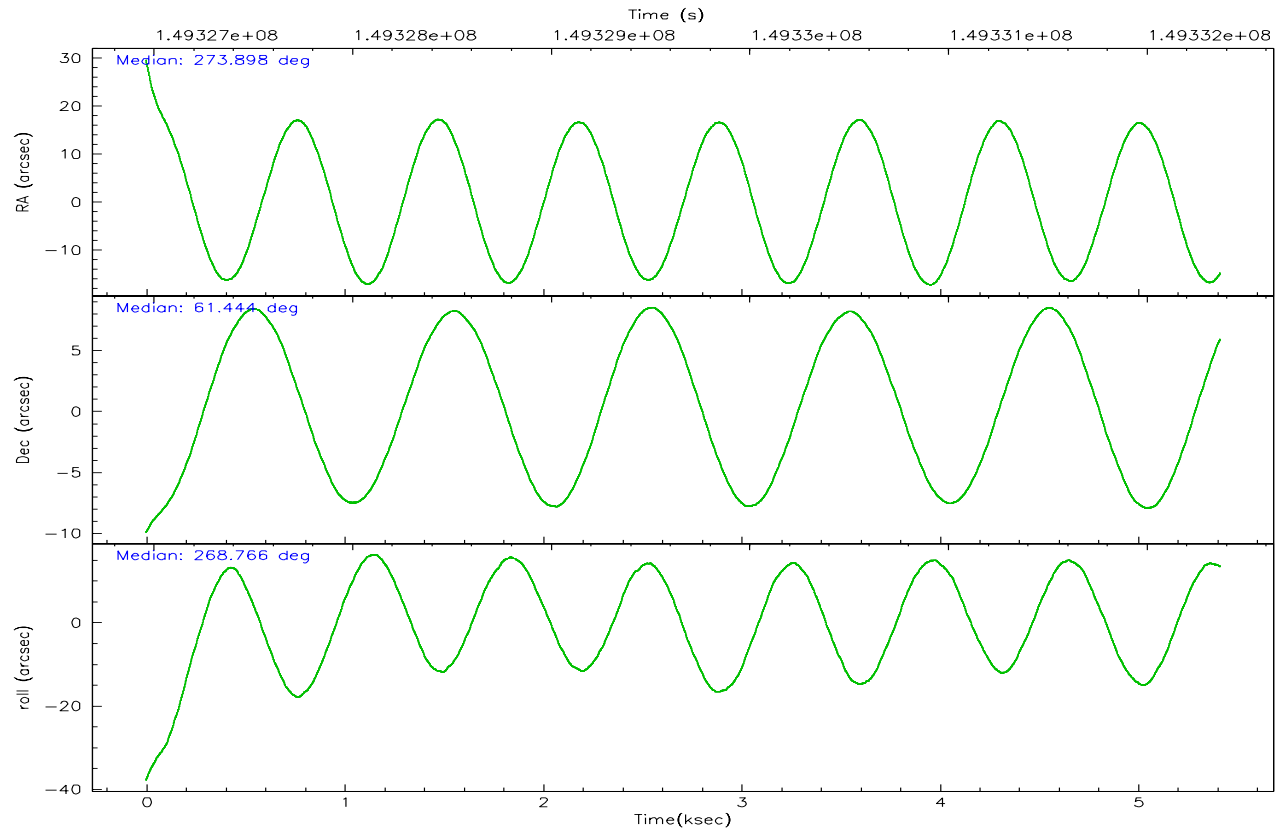
	ccd 0	ccd 1	ccd 2	ccd 3	ccd 6	ccd 7
grade 0 events	1641	1473	1674	1700	1527	1044
	5%	5%	5%	5%	4%	2%
grade 1 events	17	13	22	18	19	30
	0%	0%	0%	0%	0%	0%
grade 2 events	783	730	713	707	755	3812
	2%	2%	2%	2%	2%	9%
grade 3 events	401	389	359	348	364	917
	1%	1%	1%	1%	1%	2%
grade 4 events	353	417	339	367	373	883
	1%	1%	1%	1%	1%	2%
grade 5 events	1210	1252	1210	1321	1373	2796
	3%	4%	3%	4%	4%	6%
grade 6 events	669	707	616	614	680	9474
	2%	2%	1%	1%	2%	22%
grade 7 events	25297	24288	27552	25645	25482	22588
	83%	82%	84%	83%	83%	54%

2.2 Compared Parameters

Parameter	Planned	Actual	Parameter	Planned	Actual
Instrument	ACIS	ACIS	Obspar format version number	6	6
Detector	ACIS-012367	ACIS-012367	Obspar file type	PREDICTED	ACTUAL
Grating	NONE	NONE	Obspar update status	NONE	UPDATED
Data mode	VFAINT	VFAINT	Number of optional ACIS chips dropped	0	0
Observation mode	POINTING	POINTING	On-chip summing requested	N	N
Pointing RA	273.870831	273.8989756784159	Subarray requested	NONE	NONE
Pointing Dec	61.467398	61.4436236551963	Alternating exposures requested	N	N
Pointing Roll	268.637273	268.7691836990315	Primary exposure time	0.000000	3.2
SIM focus pos (mm)	-0.684267	-0.6828225247311905			
SIM defocus (mm)	0	0.001444936568705701			
SIM translation stage pos (mm)	-190.132523	-190.1400660498719			
SIM translation stage offset (mm)	0	0.00754346686406393			
Observation start time	149327371.184000	149326293.02866			
Observation start date	2002-09-25T07:48:27	2002-09-25T07:31:33			
Observation end time	149332371.184000	149333227.15395			
Observation end date	2002-09-25T09:11:47	2002-09-25T09:27:07			
Read mode	TIMED	TIMED			

2.3 Aspect



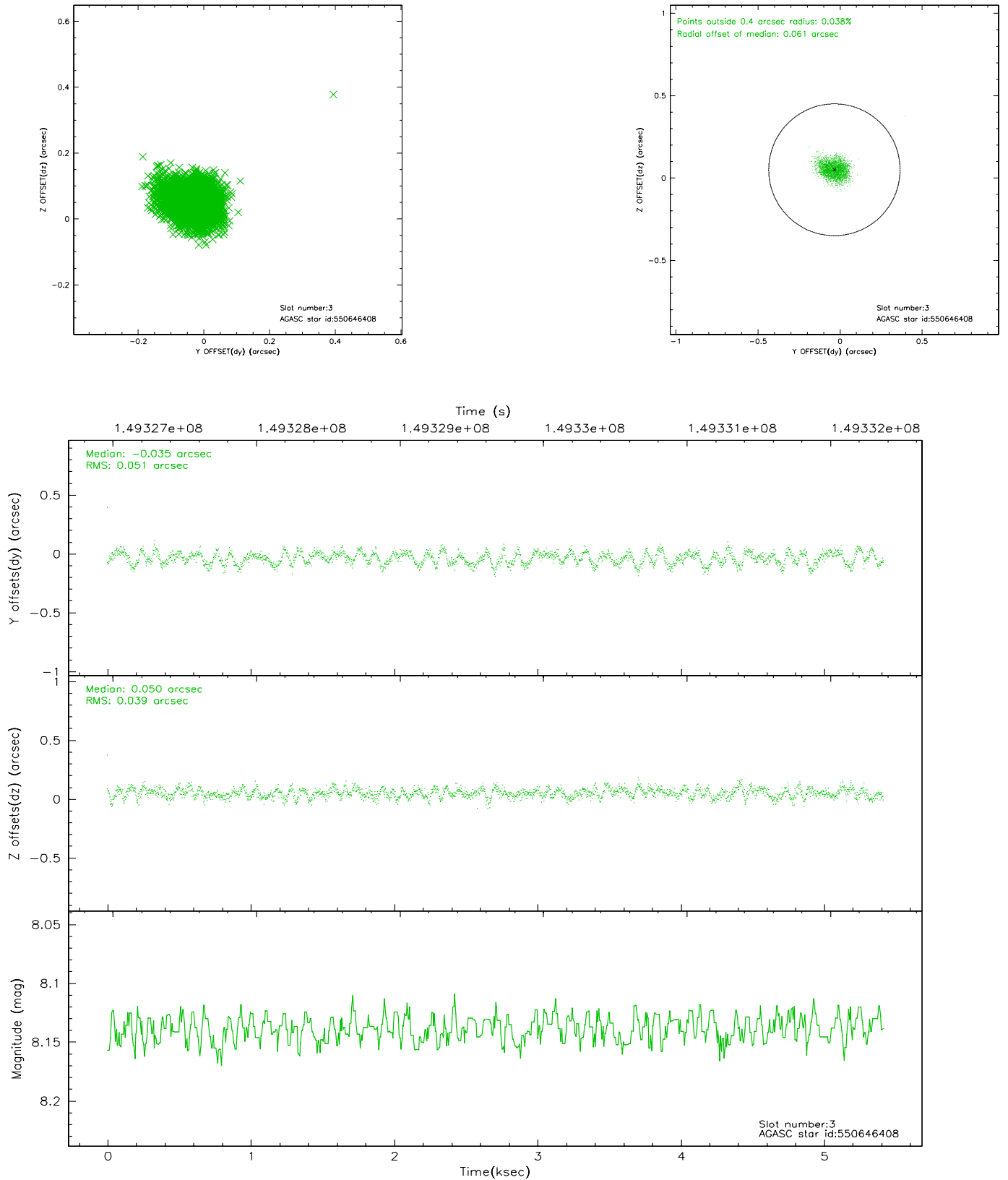


Slot Statistics

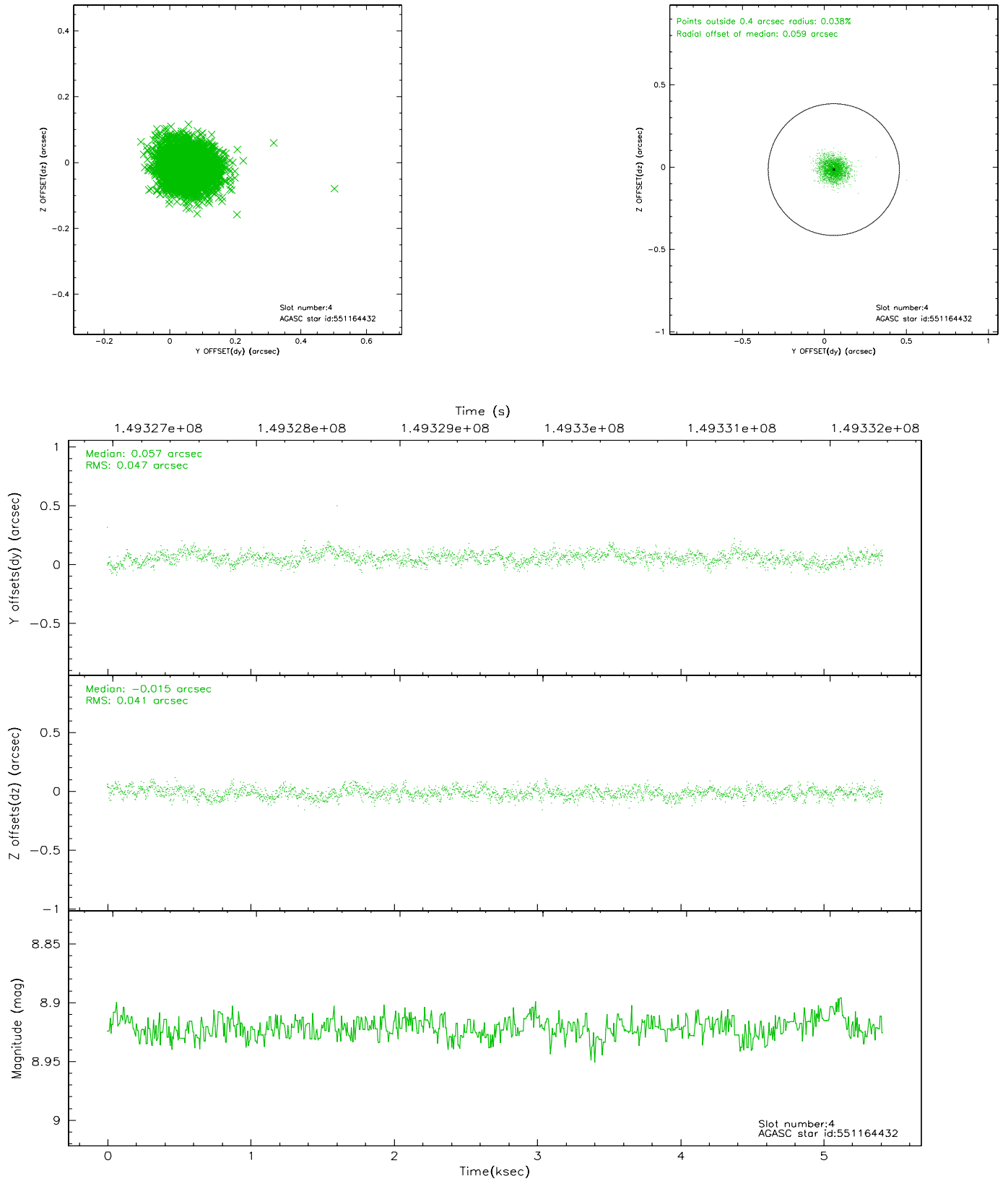
slot	status	id	mag	n_pts	med_dy	med_dz	dr1	dr2	ra	dec	mean_y	mean_z
0	FID	ACIS-S-2	7.11	1321	-0.002	0.026	0.007	0.010	0.000000	0.000000	-755.01	-1729.57
1	FID	ACIS-S-4	7.20	1321	-0.080	-0.006	0.006	0.010	0.000000	0.000000	2157.71	177.71
2	FID	ACIS-S-5	7.24	1321	0.051	-0.011	0.006	0.011	0.000000	0.000000	-1806.35	172.67
3	GUIDE	550646408	8.14	2640	-0.035	0.050	0.068	0.107	272.691132	61.184693	1048.19	-2021.66
4	GUIDE	551164432	8.92	2642	0.057	-0.015	0.066	0.106	273.687705	61.988399	-1867.25	-354.31
5	GUIDE	551159616	9.01	2642	0.002	0.051	0.085	0.140	272.723579	61.962135	-1751.68	-1983.01
6	GUIDE	552349808	9.07	2643	-0.072	-0.026	0.069	0.113	275.034401	60.904813	1957.77	2084.14
7	GUIDE	552348432	9.17	2642	0.052	-0.055	0.070	0.114	274.721615	61.641682	-670.23	1440.64

2.4 Star Slots

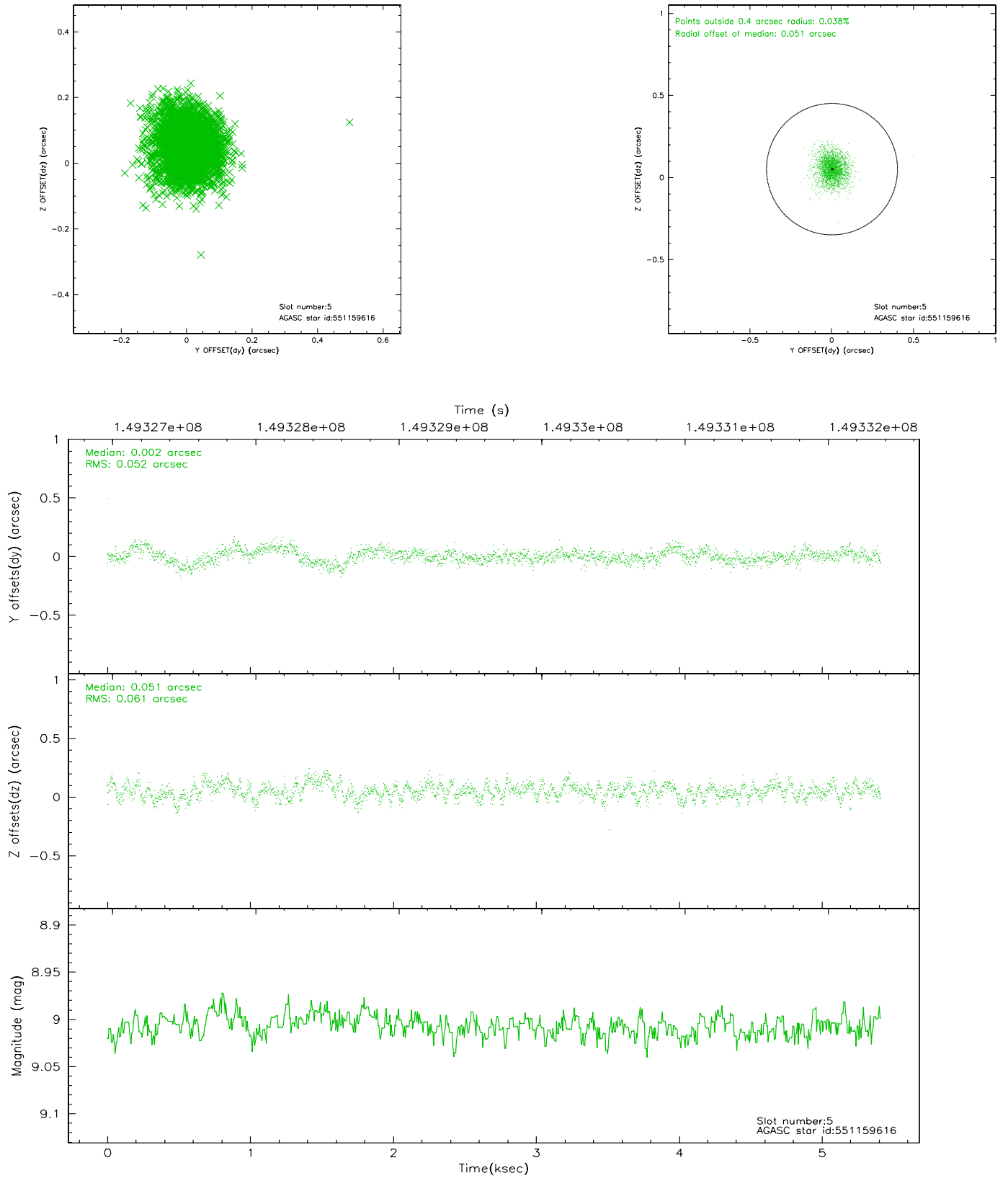
2.4.1 Slot 3



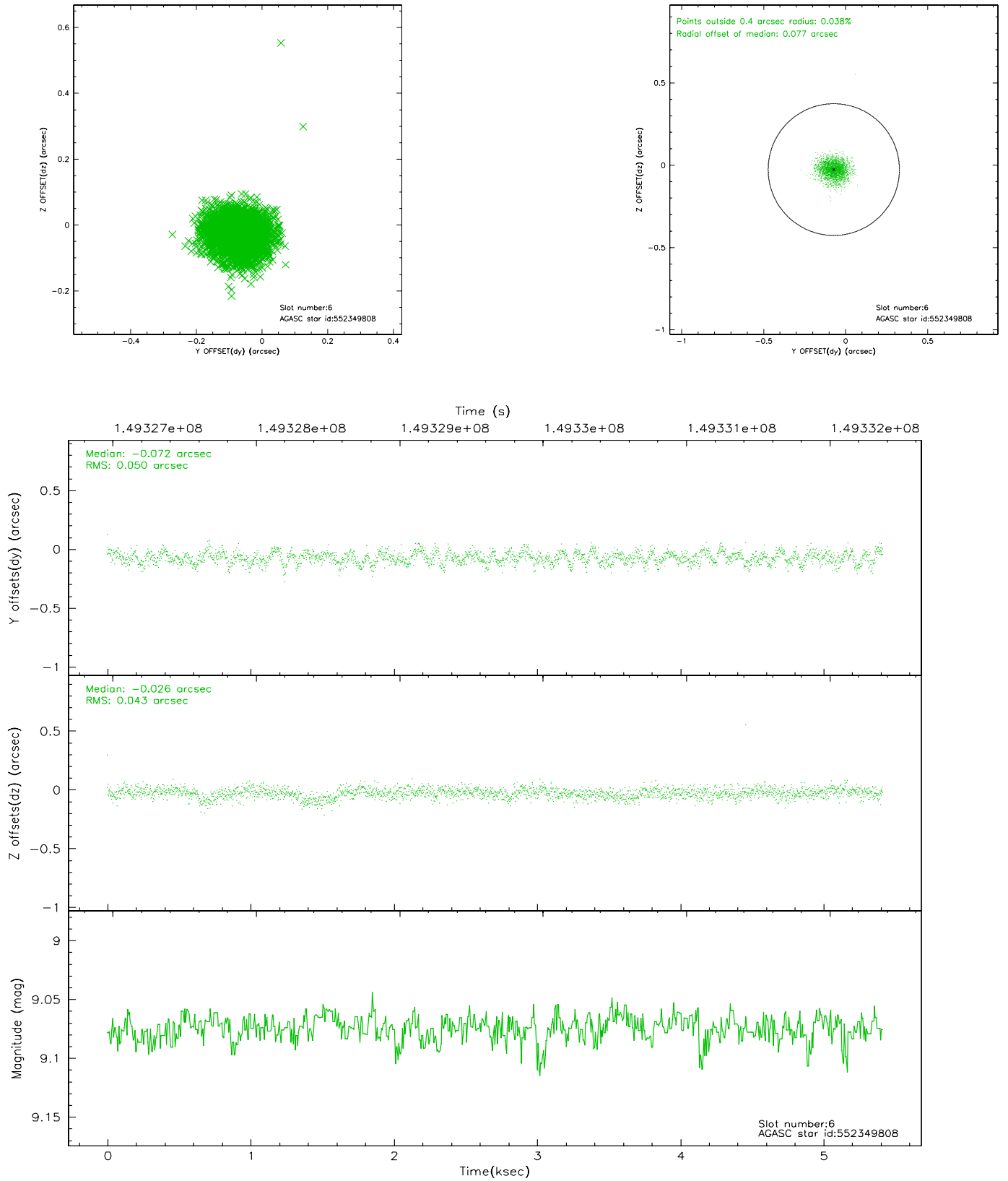
2.4.2 Slot 4



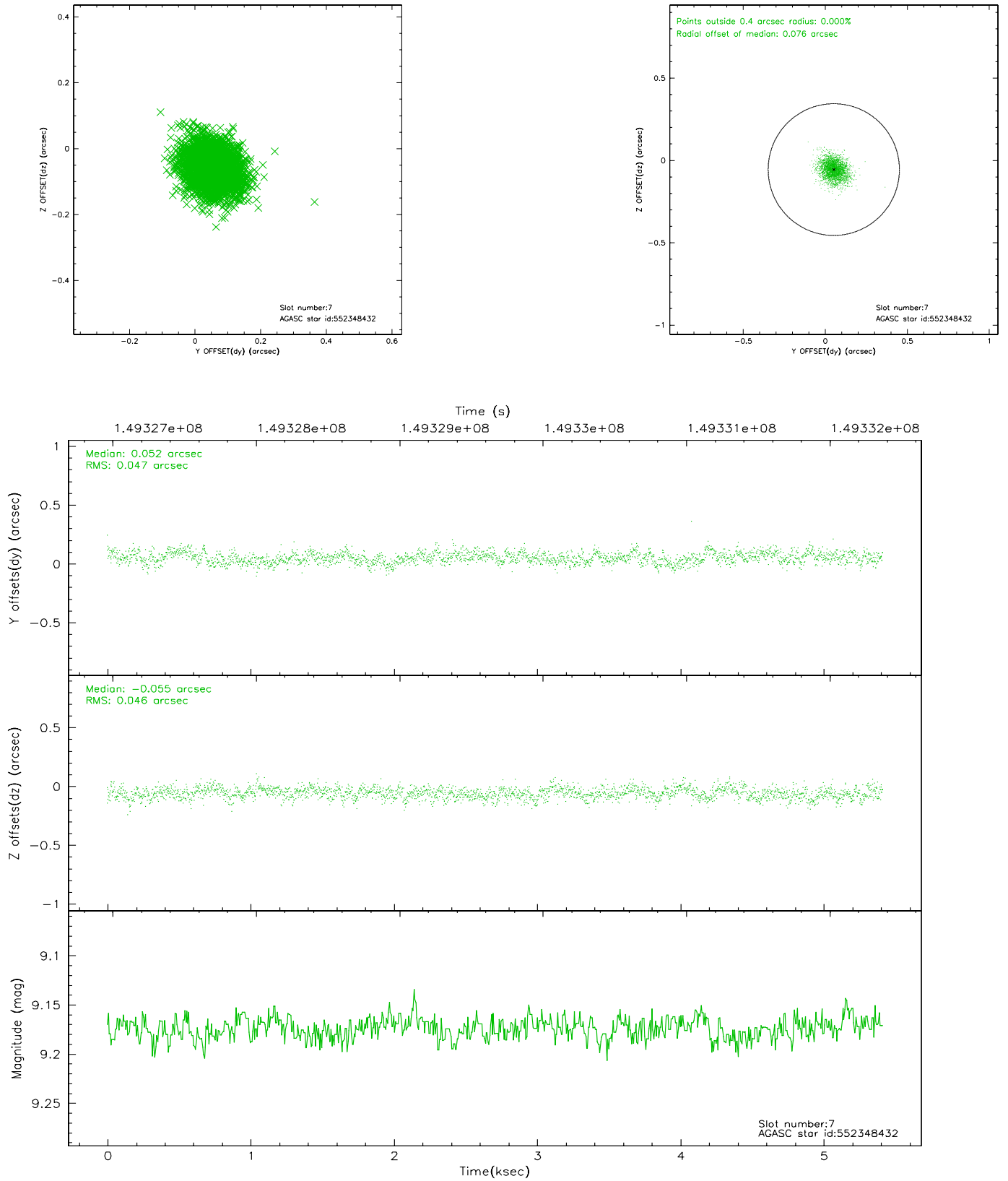
2.4.3 Slot 5



2.4.4 Slot 6

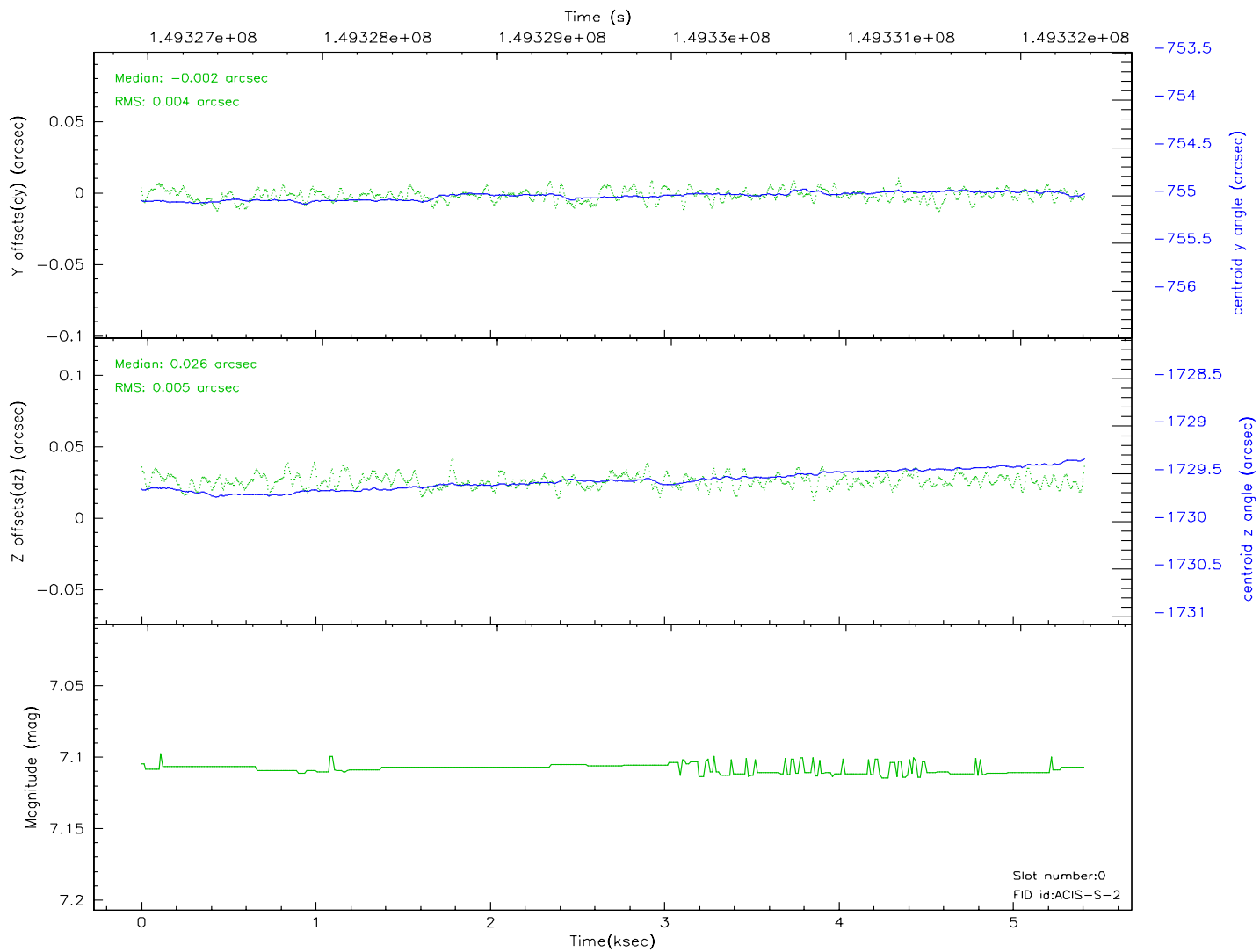
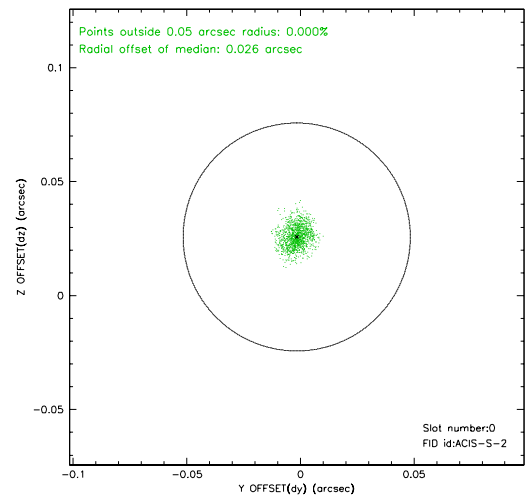
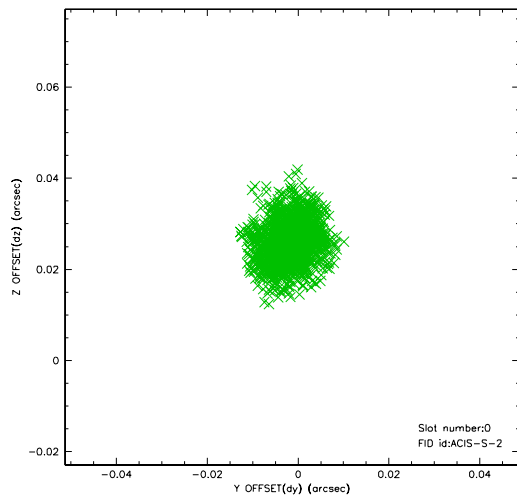


2.4.5 Slot 7

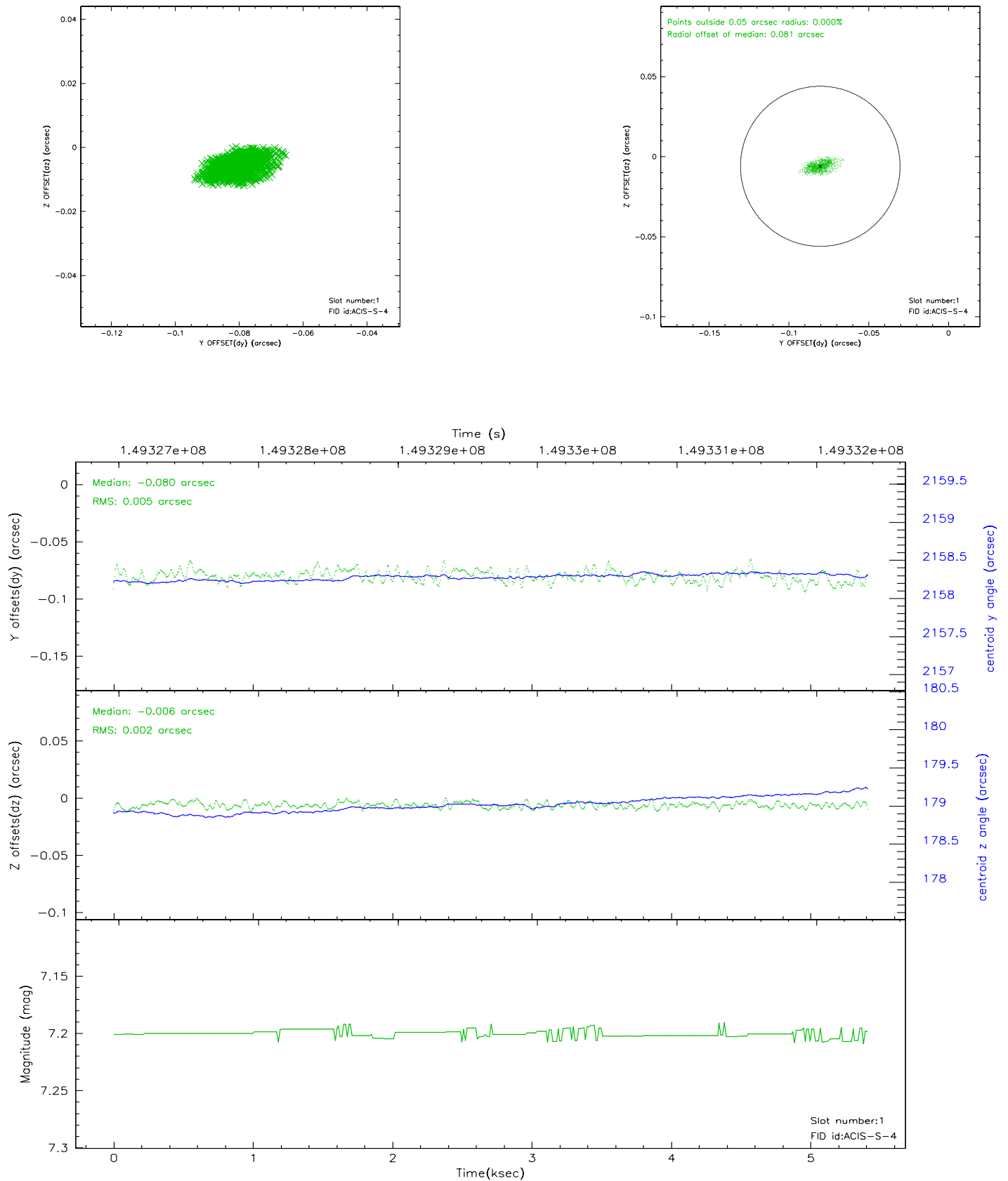


2.5 FID Slots

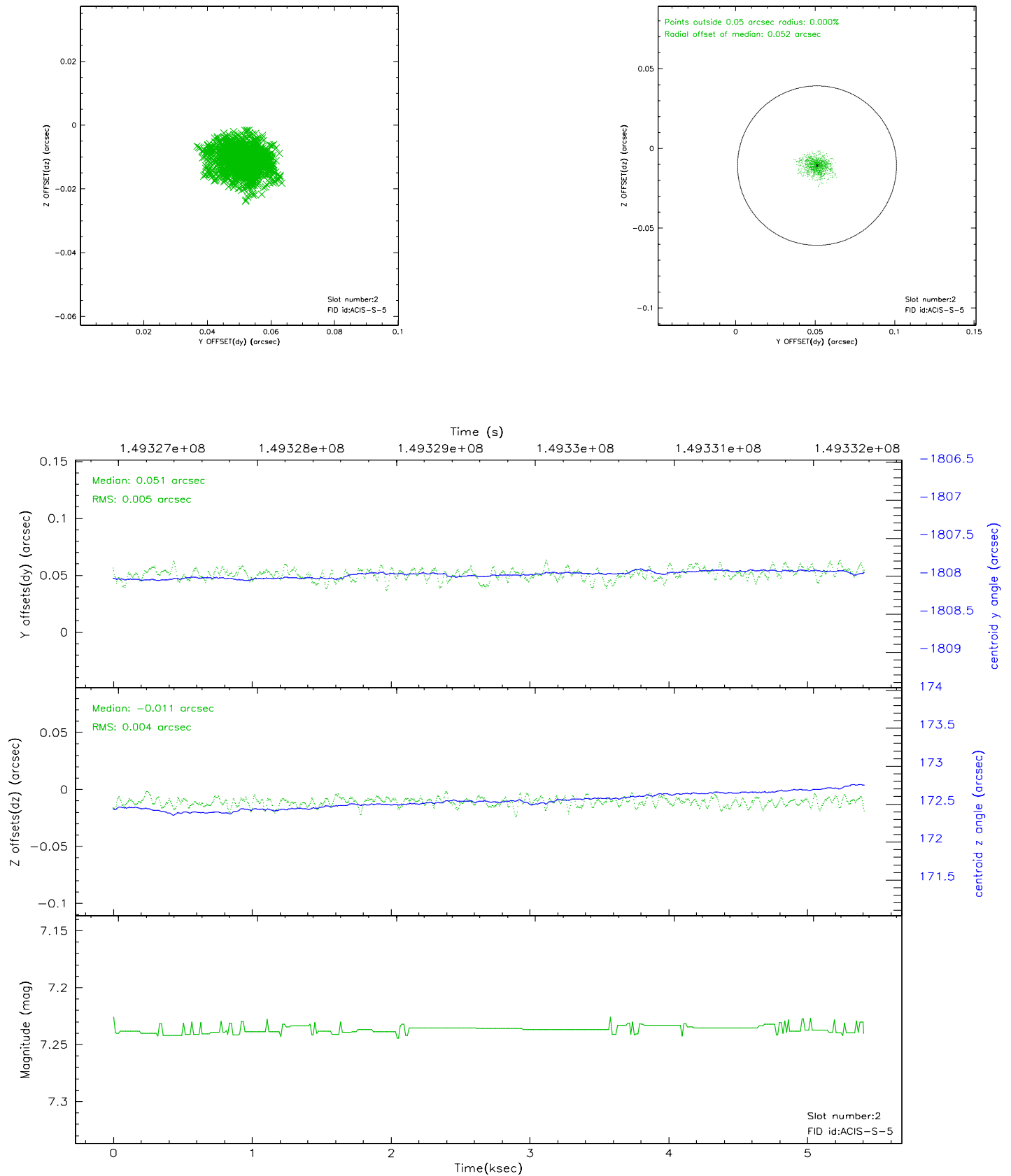
2.5.1 Slot 0



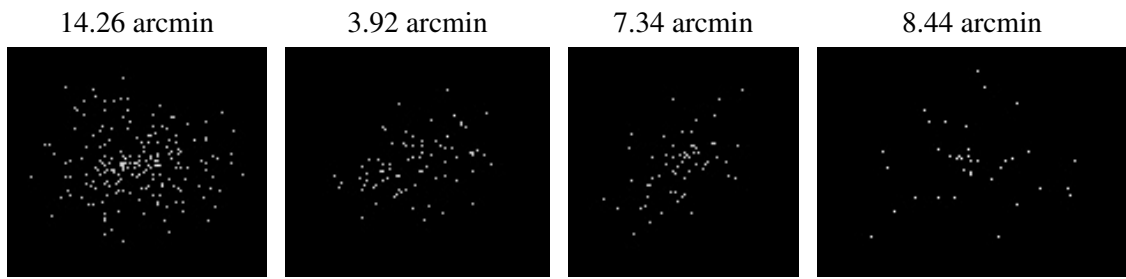
2.5.2 Slot 1



2.5.3 Slot 2



3 Point Sources



A Summary

A.1 Status

V&V Scientist	Jen Lauer
V&V Date (YYYY-MM-DD)	2006.10.04
V&V Edition	1
V&V Disposition and Status	OK
V&V Charge Time	4.963

A.2 Comments