

# V&V Reference Report

## L2 ASCDS Version : 7.6.8.1

Observation 3055 - L2 Version 001  
Chandra X-Ray Center

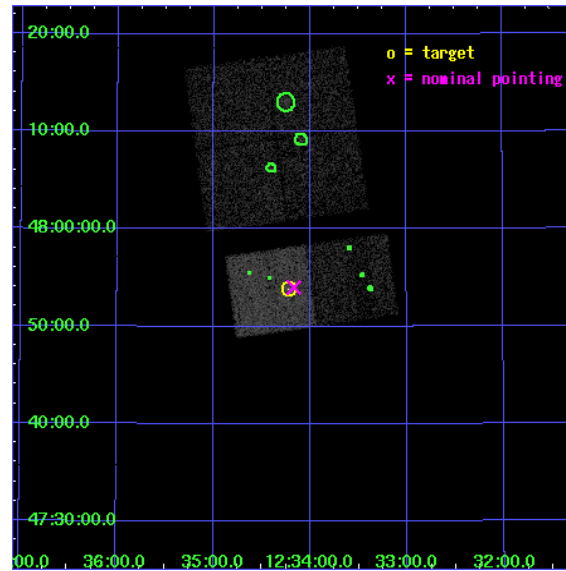
L2 Processing Date : Sep 8 2006

## Contents

<b>1</b>	<b>Front</b>	<b>2</b>
<b>2</b>	<b>OBI</b>	<b>3</b>
2.1	OBI . . . . .	3
2.1.1	Images . . . . .	3
2.1.2	Bias . . . . .	3
2.1.3	Parameters . . . . .	4
2.1.4	Events . . . . .	4
2.2	Compared Parameters . . . . .	5
2.3	Aspect . . . . .	6
2.4	Star Slots . . . . .	9
2.4.1	Slot 3 . . . . .	9
2.4.2	Slot 4 . . . . .	10
2.4.3	Slot 5 . . . . .	11
2.4.4	Slot 6 . . . . .	12
2.4.5	Slot 7 . . . . .	13
2.5	FID Slots . . . . .	14
2.5.1	Slot 0 . . . . .	14
2.5.2	Slot 1 . . . . .	15
2.5.3	Slot 2 . . . . .	16
<b>3</b>	<b>Point Sources</b>	<b>17</b>
<b>A</b>	<b>Summary</b>	<b>18</b>
A.1	Status . . . . .	18
A.2	Comments . . . . .	18

# 1 Front

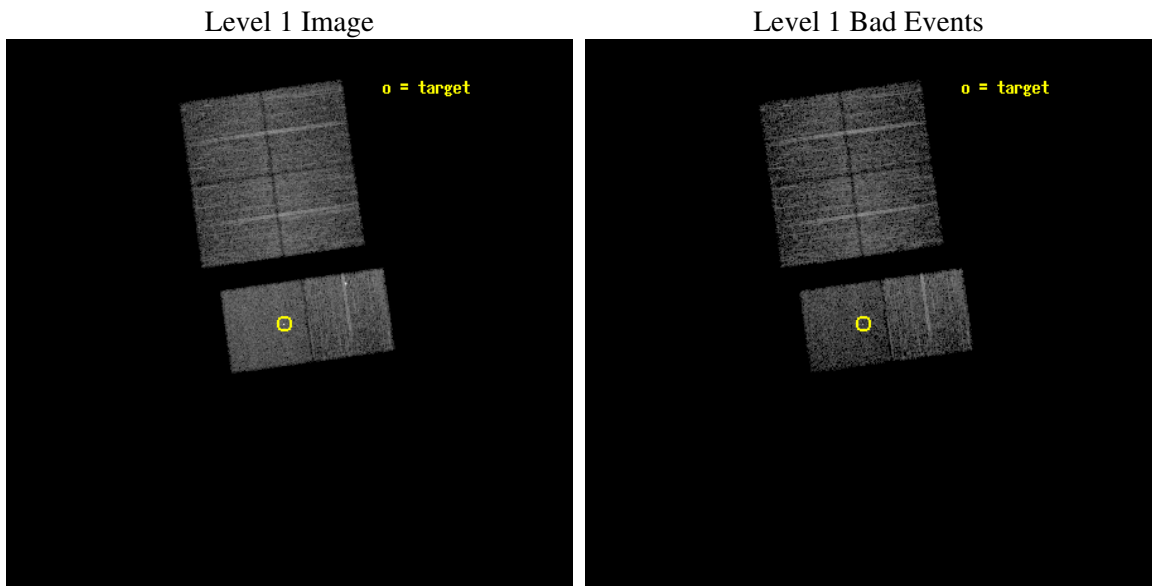
seq_num	700494
obs_id	3055
title	FRUSTRATED GPS QUASARS
observer	Dr. Willem De Vries
object	Q1231+481
dtcycle	0
cycle	P
ra_targ	188.555417
dec_targ	47.897444
ra_nom	188.54172826048
dec_nom	47.900400678017
roll_nom	171.97983439892
revision	2
ontime	4819.2000044882
livetime	4758.1763922575
ontime0	4819.2000044882
ontime1	4819.2000044882
ontime2	4819.2000044882
ontime3	4819.2000044882
ontime6	4819.2000044882
ontime7	4819.2000044882
l2events	37988



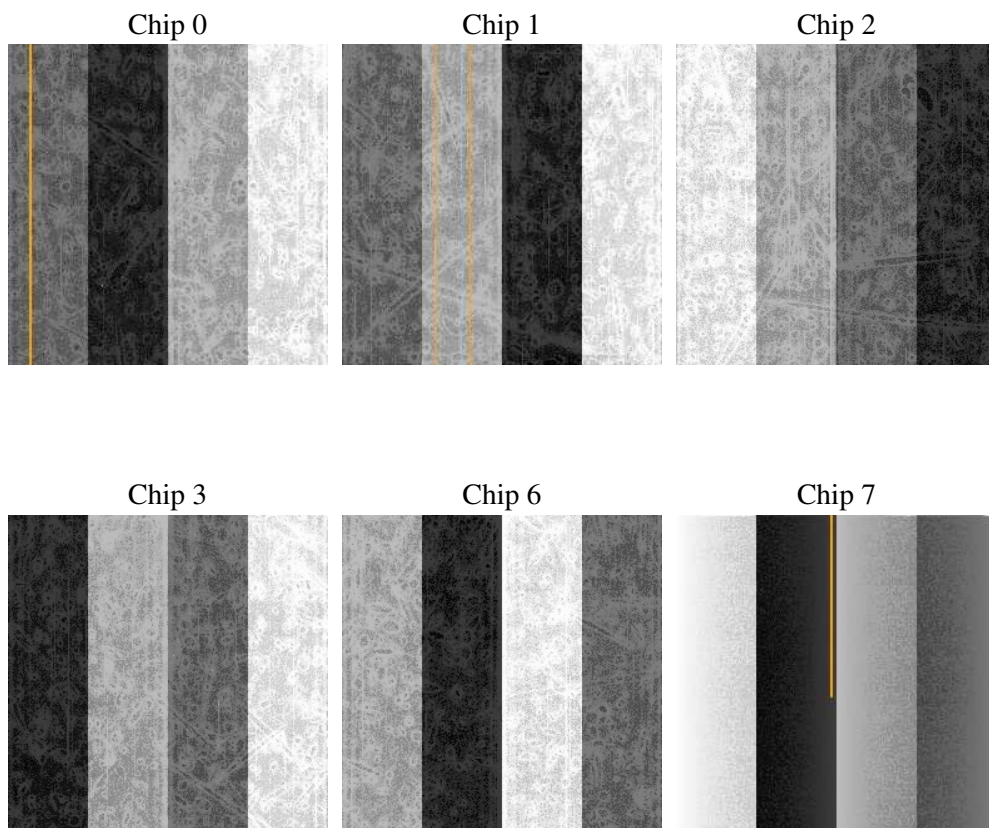
## 2 OBI

### 2.1 OBI

#### 2.1.1 Images



#### 2.1.2 Bias



### 2.1.3 Parameters

obi_num	1
ascdsver	7.6.8.1
caldsver	3.2.3
date	2006-09-08T08:32:27
revision	2

sched_exp_time	4700.000000
ontime	5013.8337532729
ontime0	5013.8337532729
ontime1	5013.8337532729
ontime2	5013.8337333351
ontime3	5013.8337532729
ontime6	5013.8337333351
ontime7	5013.8337532729
l1events	245505

### 2.1.4 Events

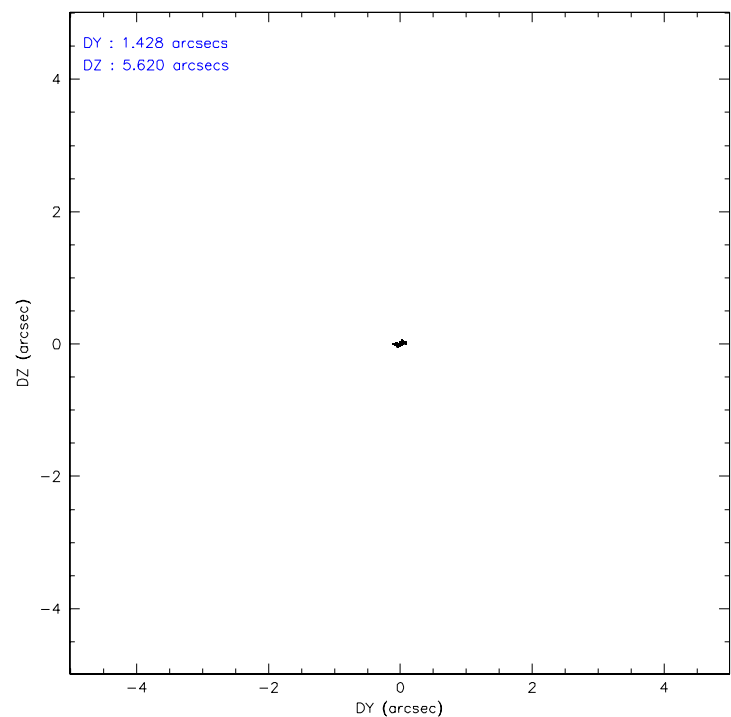
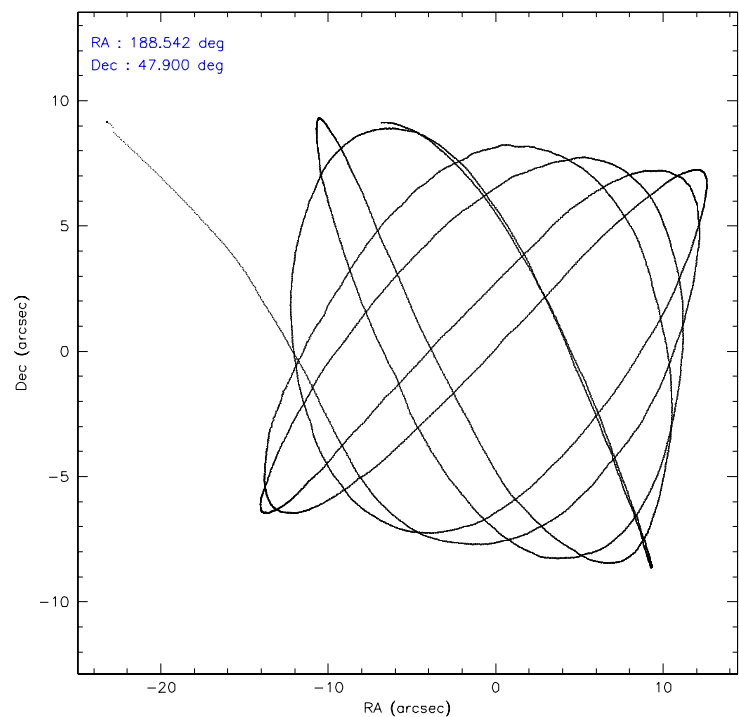
	ccd 0	ccd 1	ccd 2	ccd 3	ccd 6	ccd 7
level 1 events	36918	36625	43483	40127	44932	43420
rejected events	31146	31522	37517	35424	38651	26381
rejected %	84%	86%	86%	88%	86%	60%

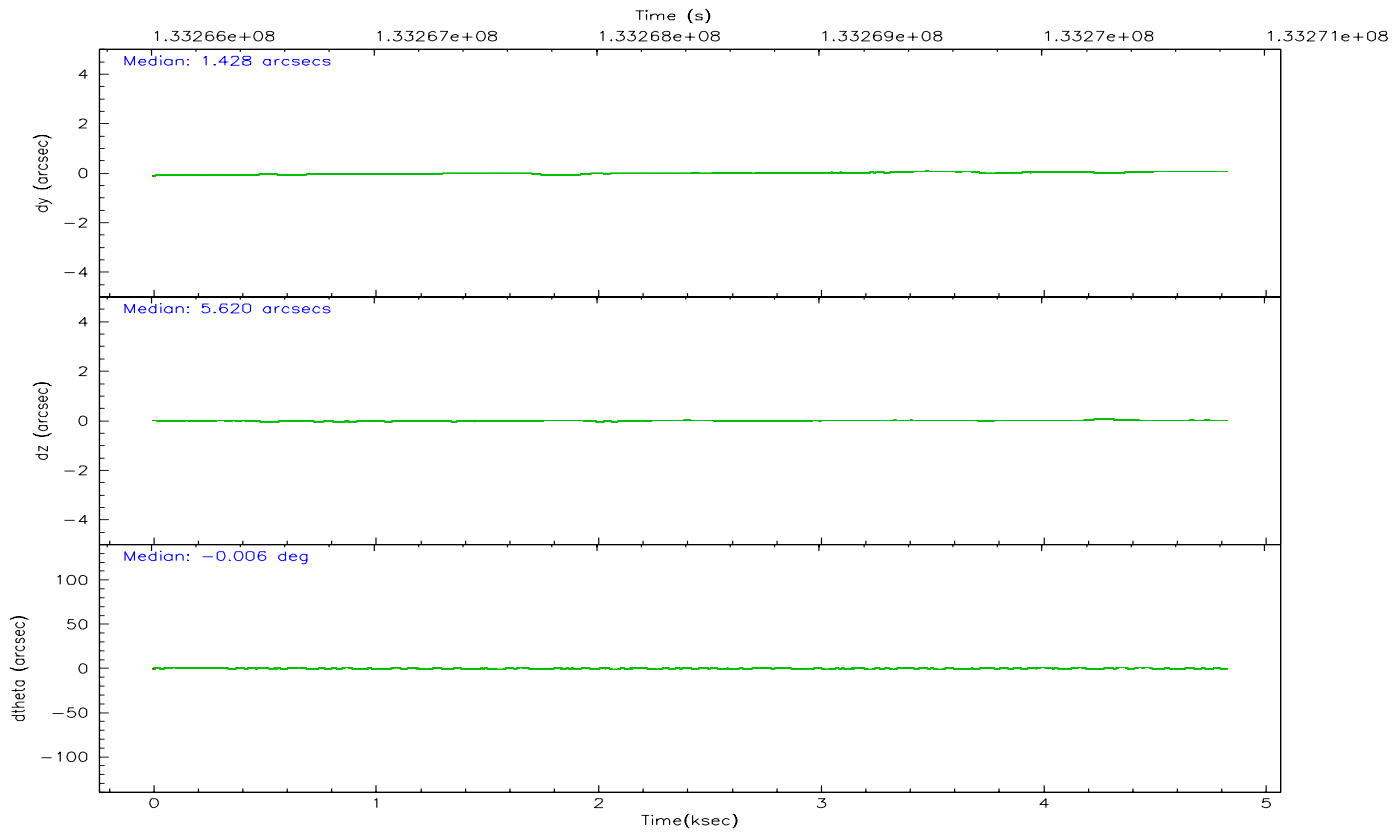
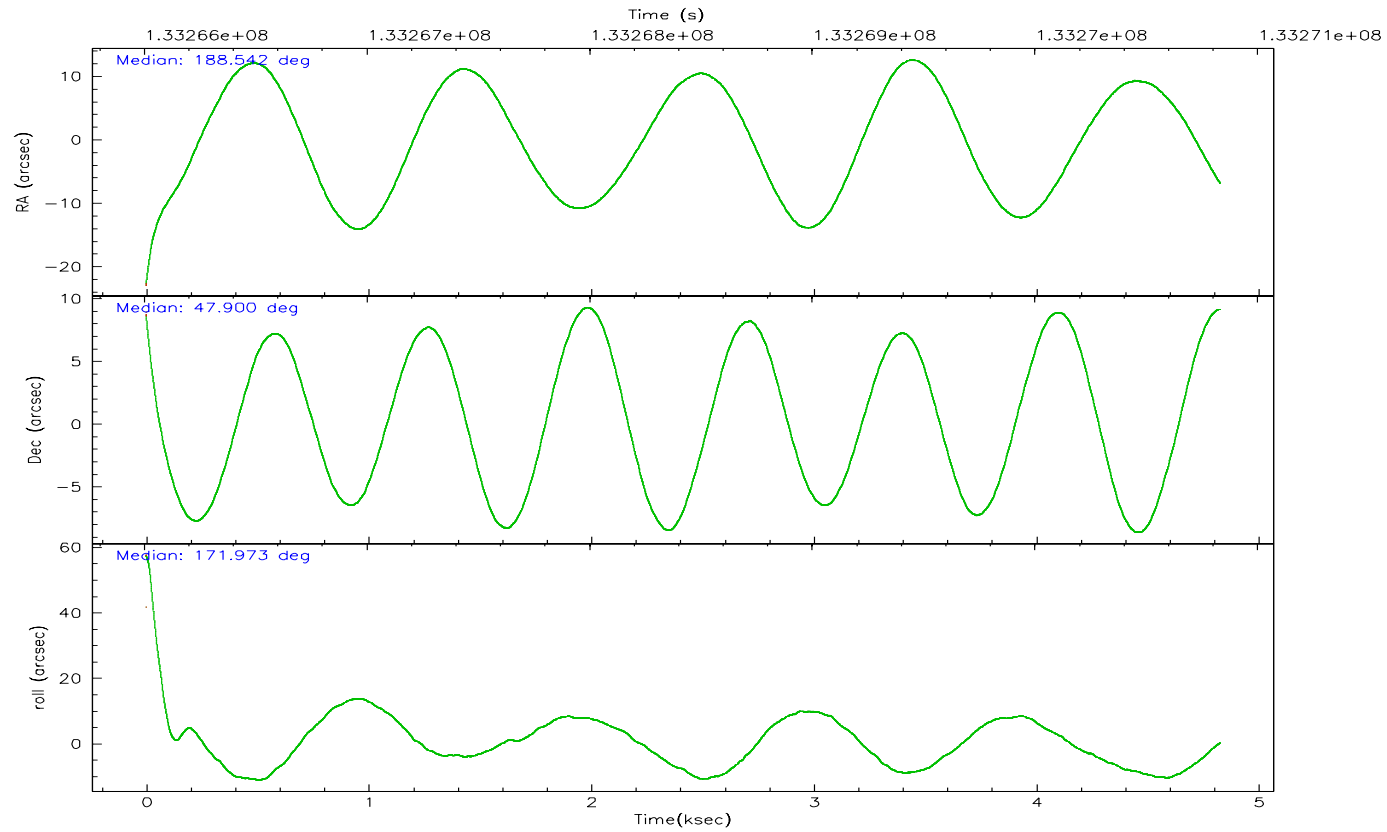
	ccd 0	ccd 1	ccd 2	ccd 3	ccd 6	ccd 7
grade 0 events	2324	1874	2522	1857	2839	1503
	6%	5%	5%	4%	6%	3%
grade 1 events	20	10	25	20	18	54
	0%	0%	0%	0%	0%	0%
grade 2 events	1877	1492	1832	1295	1858	4605
	5%	4%	4%	3%	4%	10%
grade 3 events	363	393	354	342	389	1084
	0%	1%	0%	0%	0%	2%
grade 4 events	348	410	445	349	377	1041
	0%	1%	1%	0%	0%	2%
grade 5 events	1175	1257	1115	1185	1341	2815
	3%	3%	2%	2%	2%	6%
grade 6 events	1099	1144	1016	1039	1054	9460
	2%	3%	2%	2%	2%	21%
grade 7 events	29712	30045	36174	34040	37056	22858
	80%	82%	83%	84%	82%	52%

## 2.2 Compared Parameters

Parameter	Planned	Actual	Parameter	Planned	Actual
Instrument	ACIS	ACIS	Obspar format version number	6	6
Detector	ACIS-012367	ACIS-012367	Obspar file type	PREDICTED	ACTUAL
Grating	NONE	NONE	Obspar update status	NONE	UPDATED
Data mode	VFAINT	VFAINT	On-chip summing requested	N	N
Observation mode	POINTING	POINTING	Subarray requested	NONE	NONE
Pointing RA	188.579176	188.5417282604826	Alternating exposures requested	N	N
Pointing Dec	47.910973	47.90040067801674	Primary exposure time	0.000000	3.2
Pointing Roll	171.795275	171.9798343989234			
SIM focus pos (mm)	-0.684267	-0.6828225247311905			
SIM defocus (mm)	0	0.001444936568705701			
SIM translation stage pos (mm)	-190.132523	-190.1425803651734			
SIM translation stage offset (mm)	0	0.01005778216563158			
Observation start time	133266133.184000	133264997.47069			
Observation start date	2002-03-23T10:21:09	2002-03-23T10:03:17			
Observation end time	133270833.184000	133271796.29597			
Observation end date	2002-03-23T11:39:29	2002-03-23T11:56:36			
Read mode	TIMED	TIMED			

2.3 Aspect





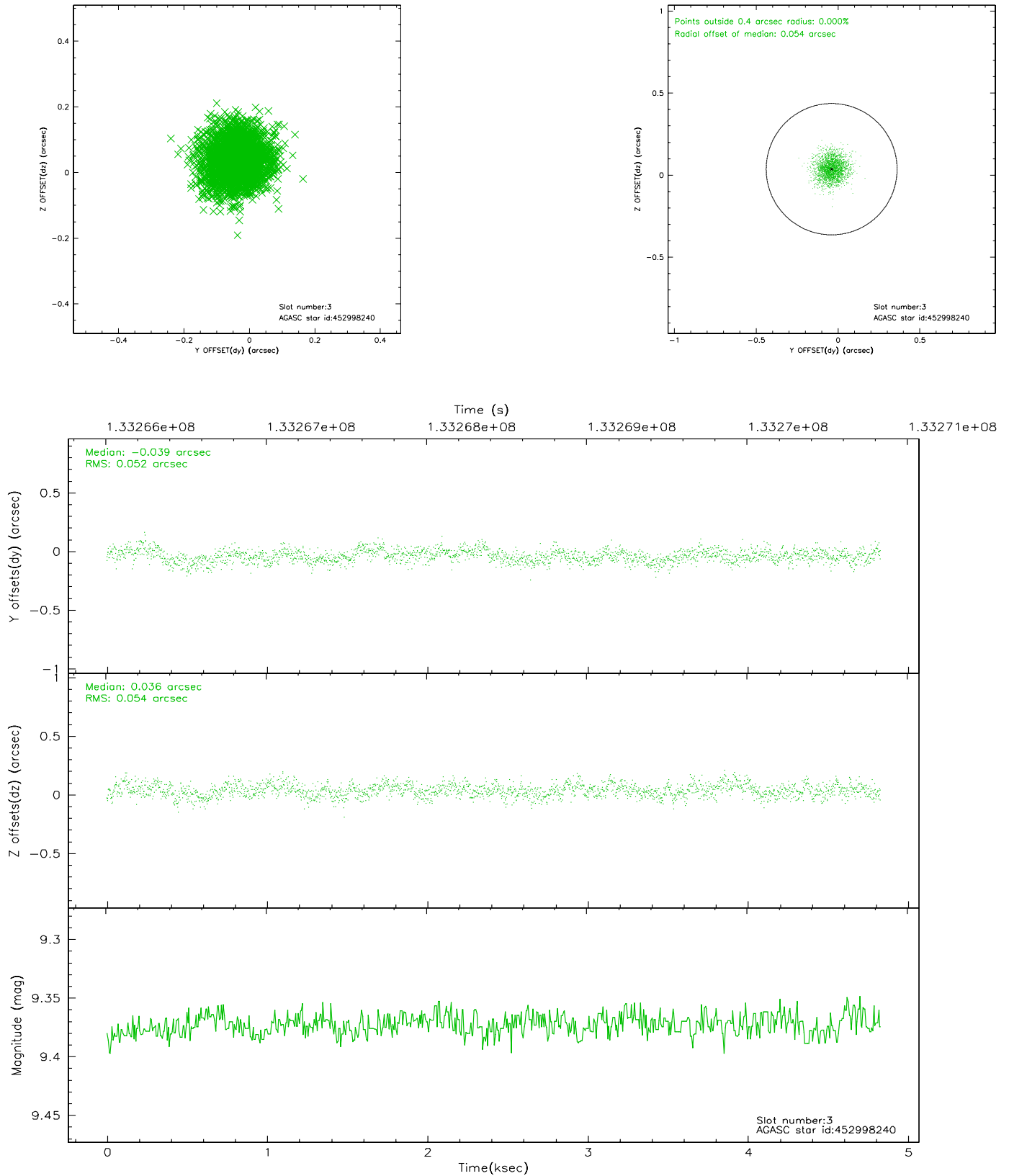
### Slot Statistics

slot	status	id	mag	n_pts	med_dy	med_dz	dr1	dr2	ra	dec	mean_y	mean_z
0	FID	ACIS-S-2	7.12	1178	-0.040	0.031	0.006	0.010	0.000000	0.000000	-754.02	-1726.69
1	FID	ACIS-S-4	7.21	1178	-0.053	0.011	0.005	0.009	0.000000	0.000000	2158.63	180.55
2	FID	ACIS-S-5	7.24	1178	0.063	-0.033	0.006	0.010	0.000000	0.000000	-1805.18	175.51
3	GUIDE	452998240	9.37	2356	-0.039	0.036	0.080	0.129	189.447374	48.065399	-1986.72	-860.82
4	GUIDE	452988904	9.49	2353	0.036	0.067	0.082	0.134	187.918892	48.028746	1633.57	-200.27
5	GUIDE	452999160	9.65	2356	-0.001	-0.008	0.097	0.158	187.764367	47.417786	1712.71	2029.89
6	GUIDE	452991344	9.75	2355	0.048	-0.068	0.113	0.194	188.989967	48.196898	-828.08	-1161.87
7	GUIDE	452990256	9.70	2353	-0.039	-0.032	0.128	0.202	187.913903	48.364787	1808.29	-1397.74

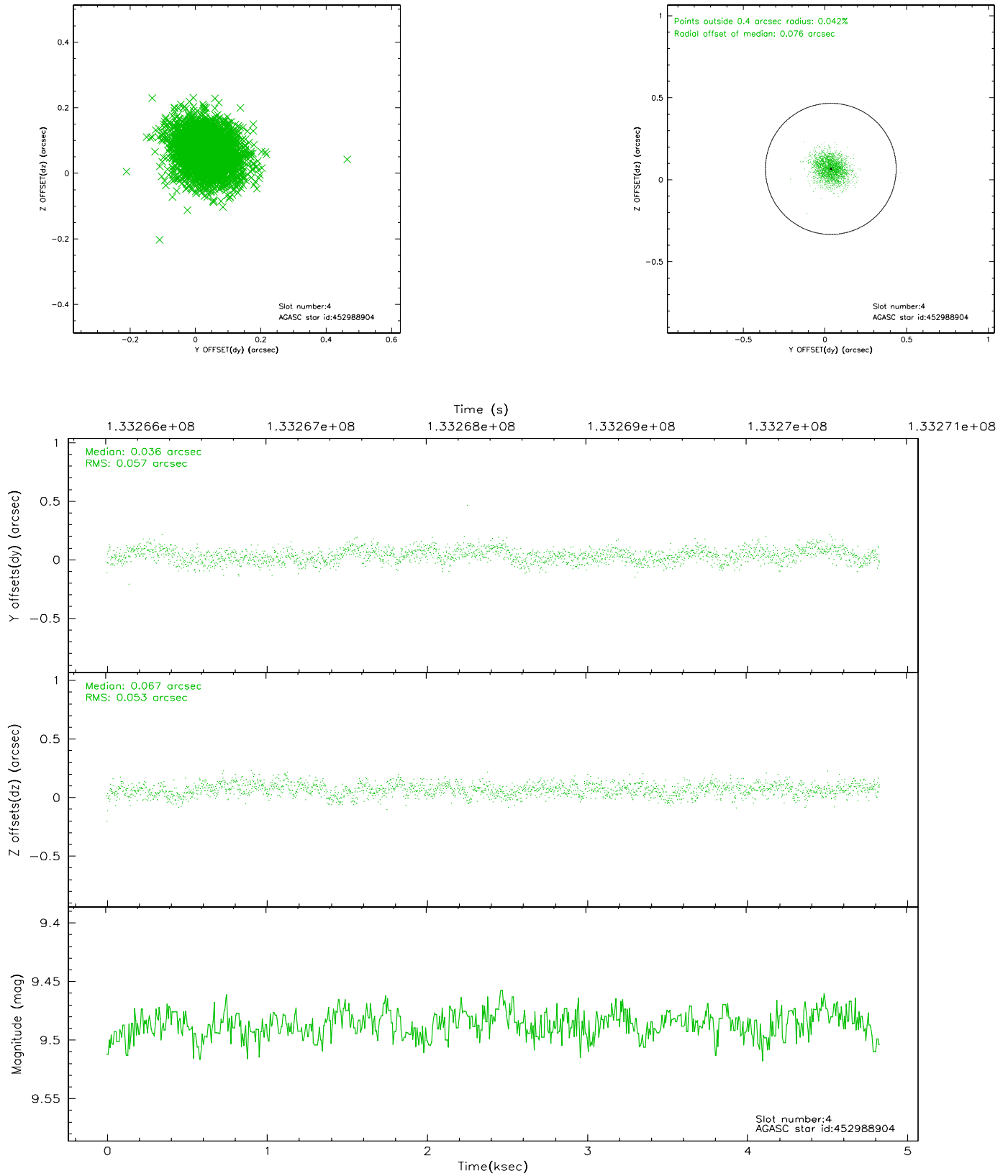


## 2.4 Star Slots

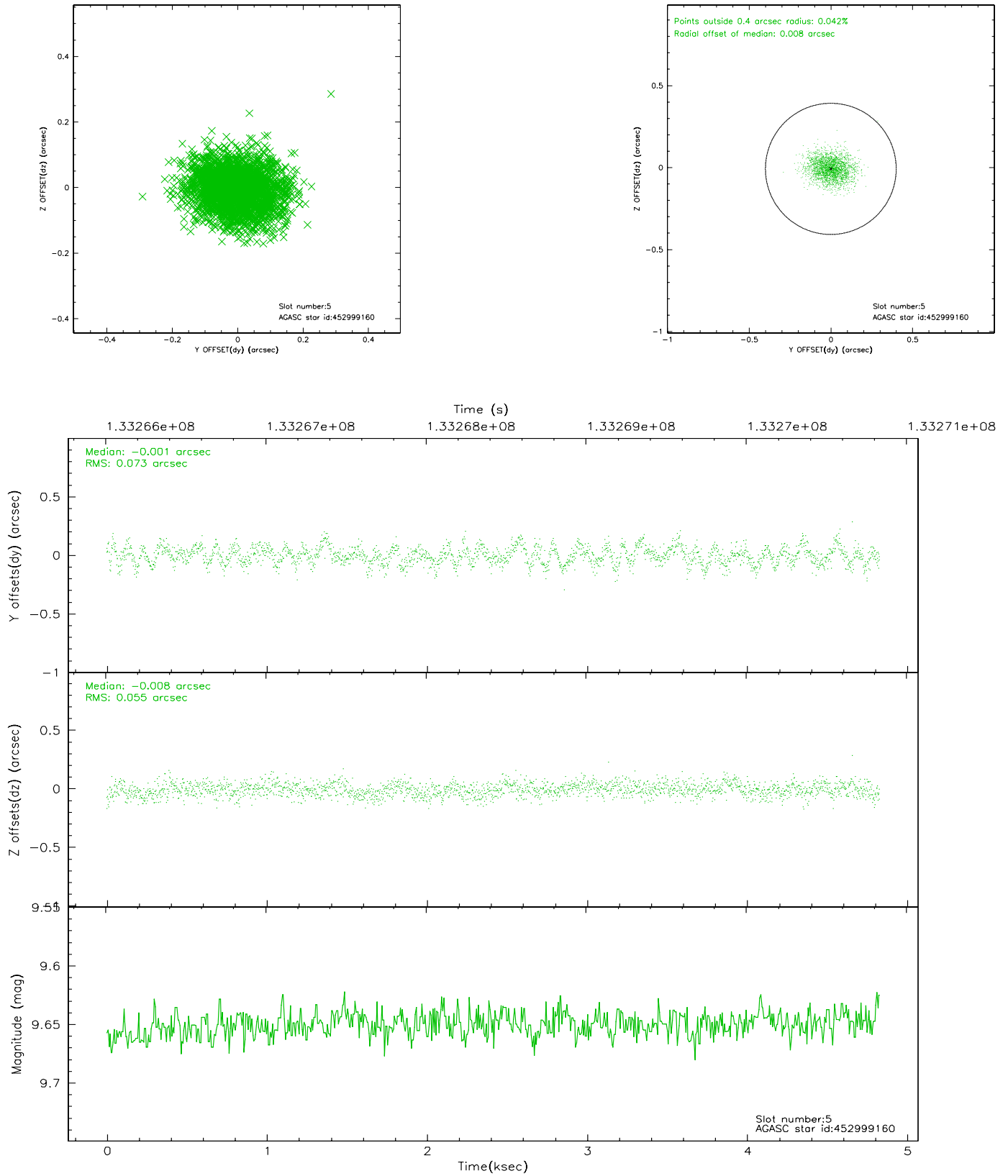
### 2.4.1 Slot 3



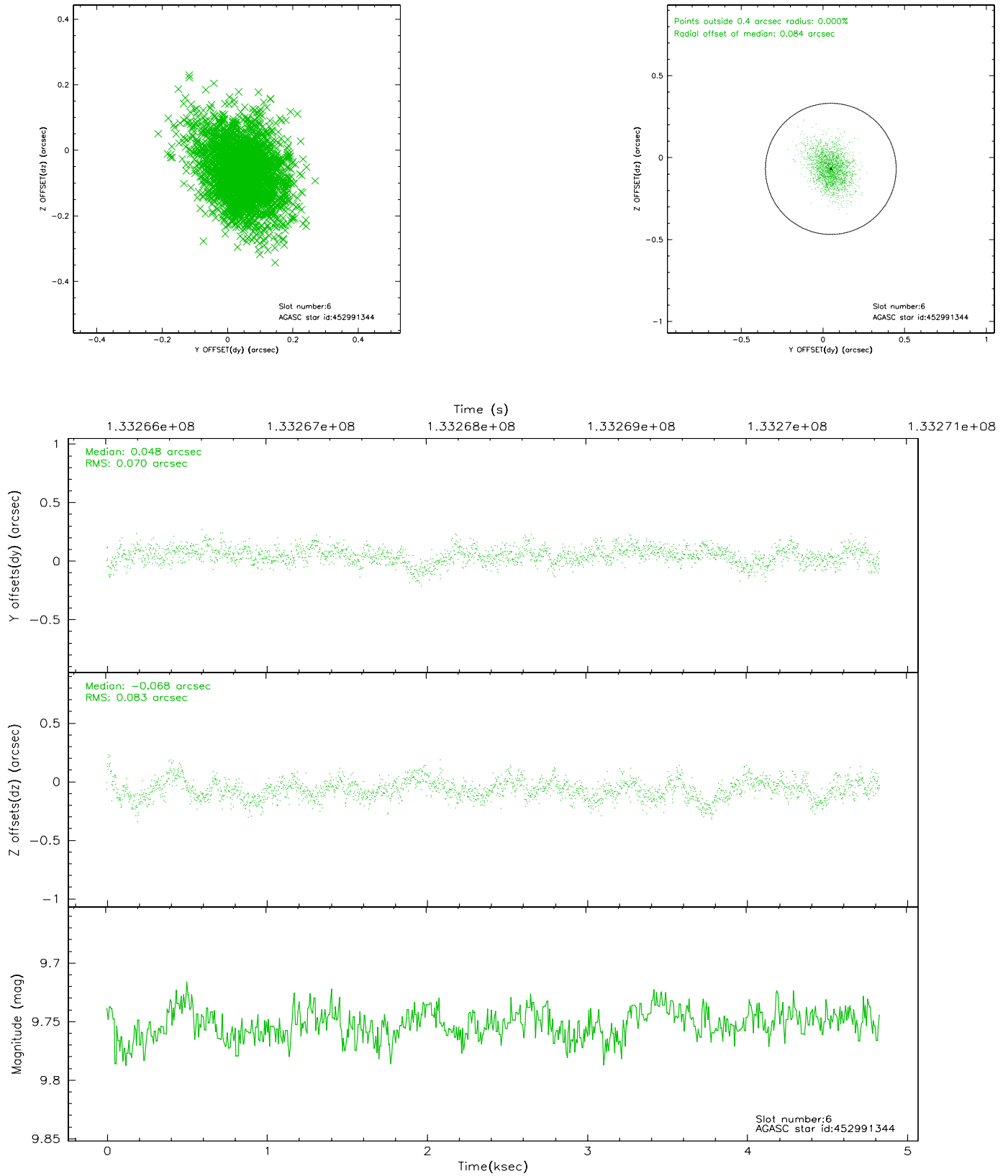
## 2.4.2 Slot 4



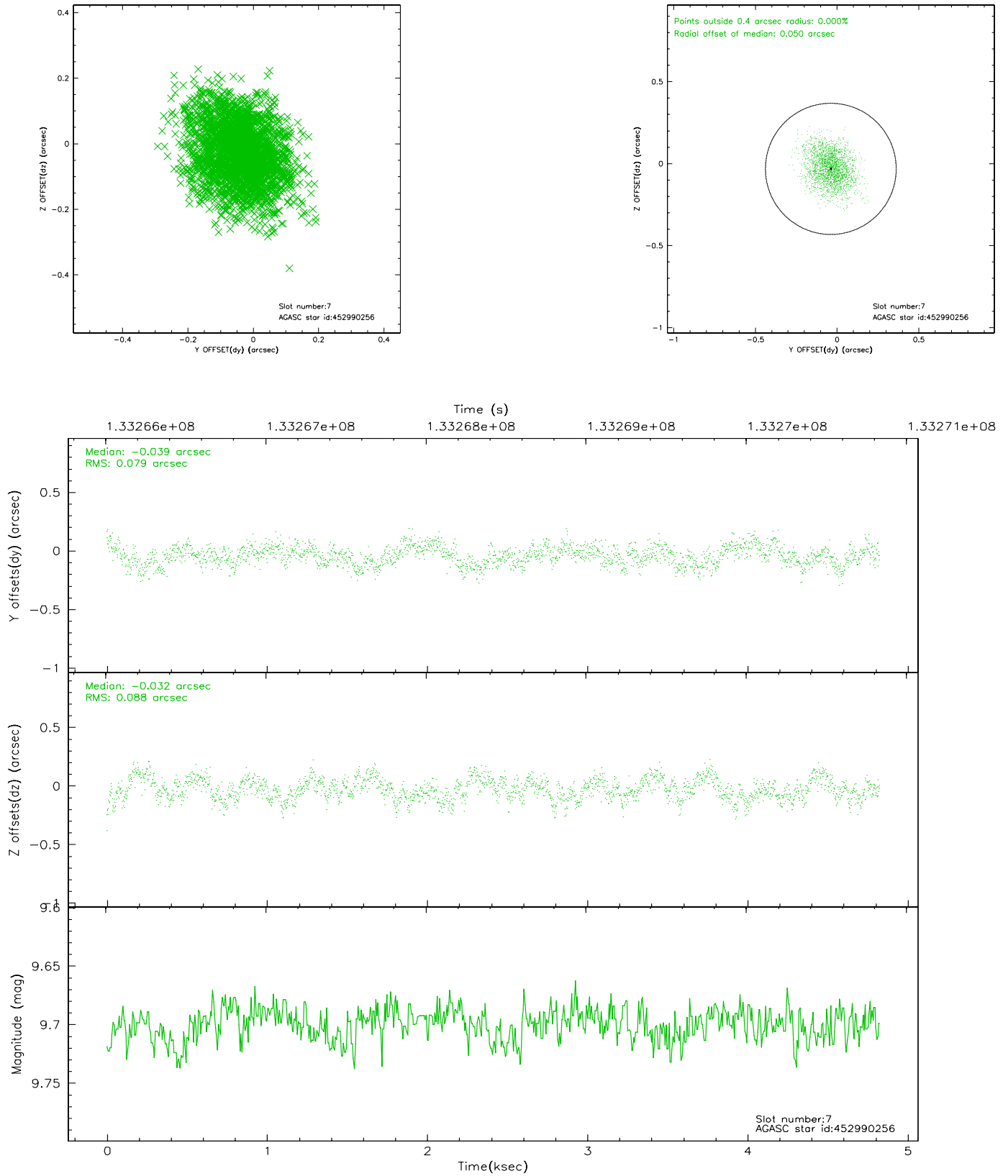
### 2.4.3 Slot 5



## 2.4.4 Slot 6

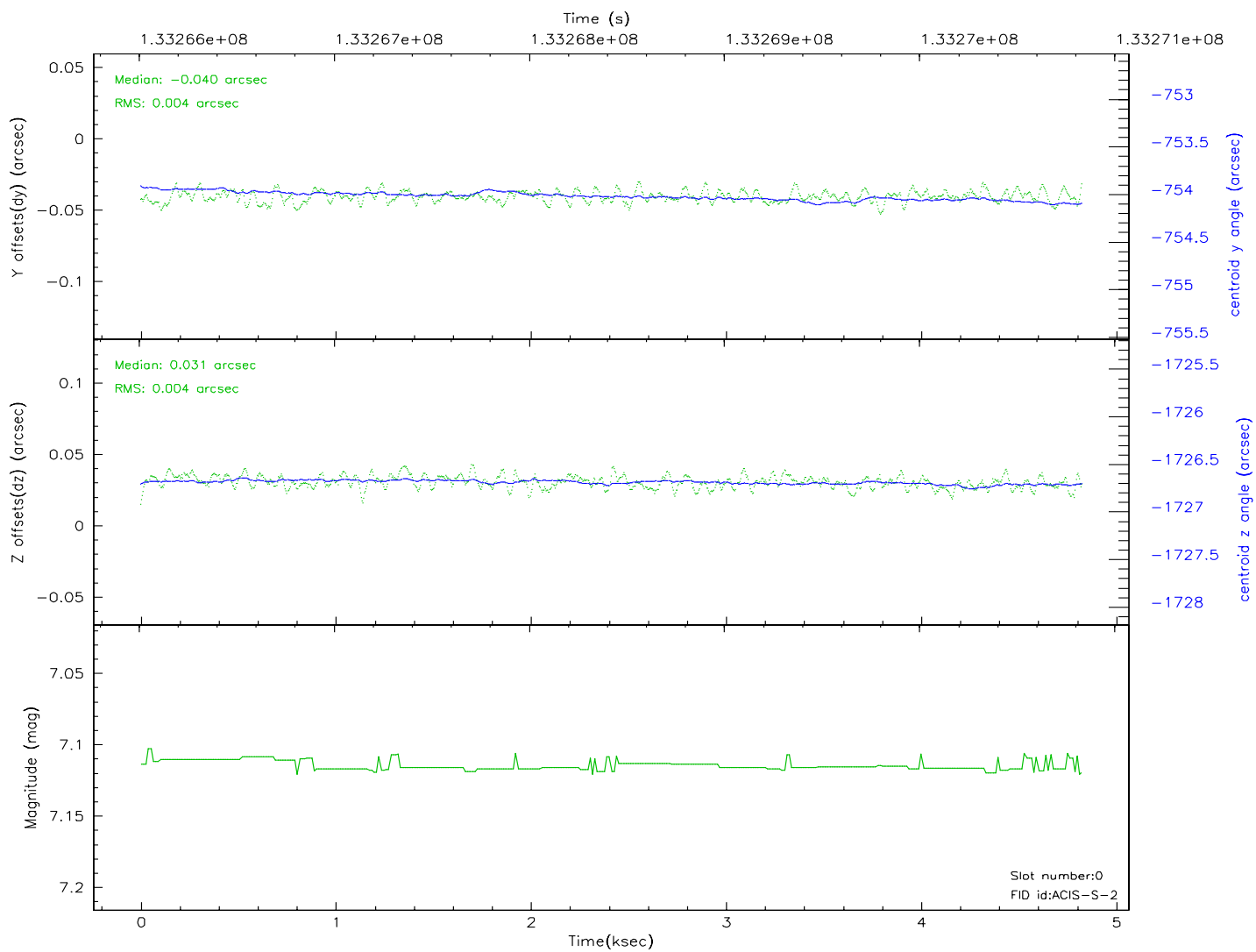
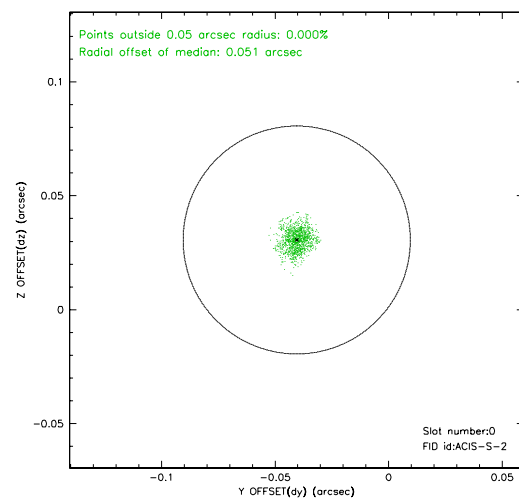
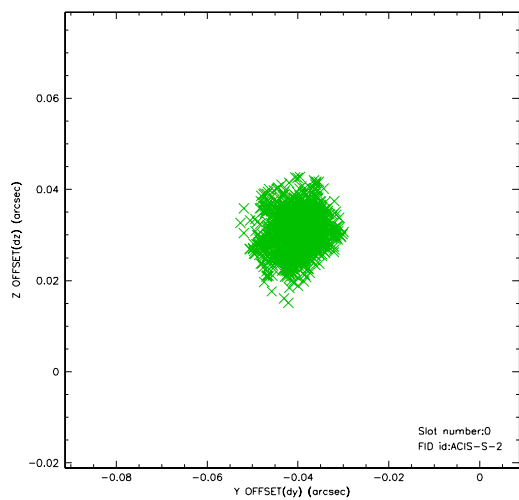


## 2.4.5 Slot 7

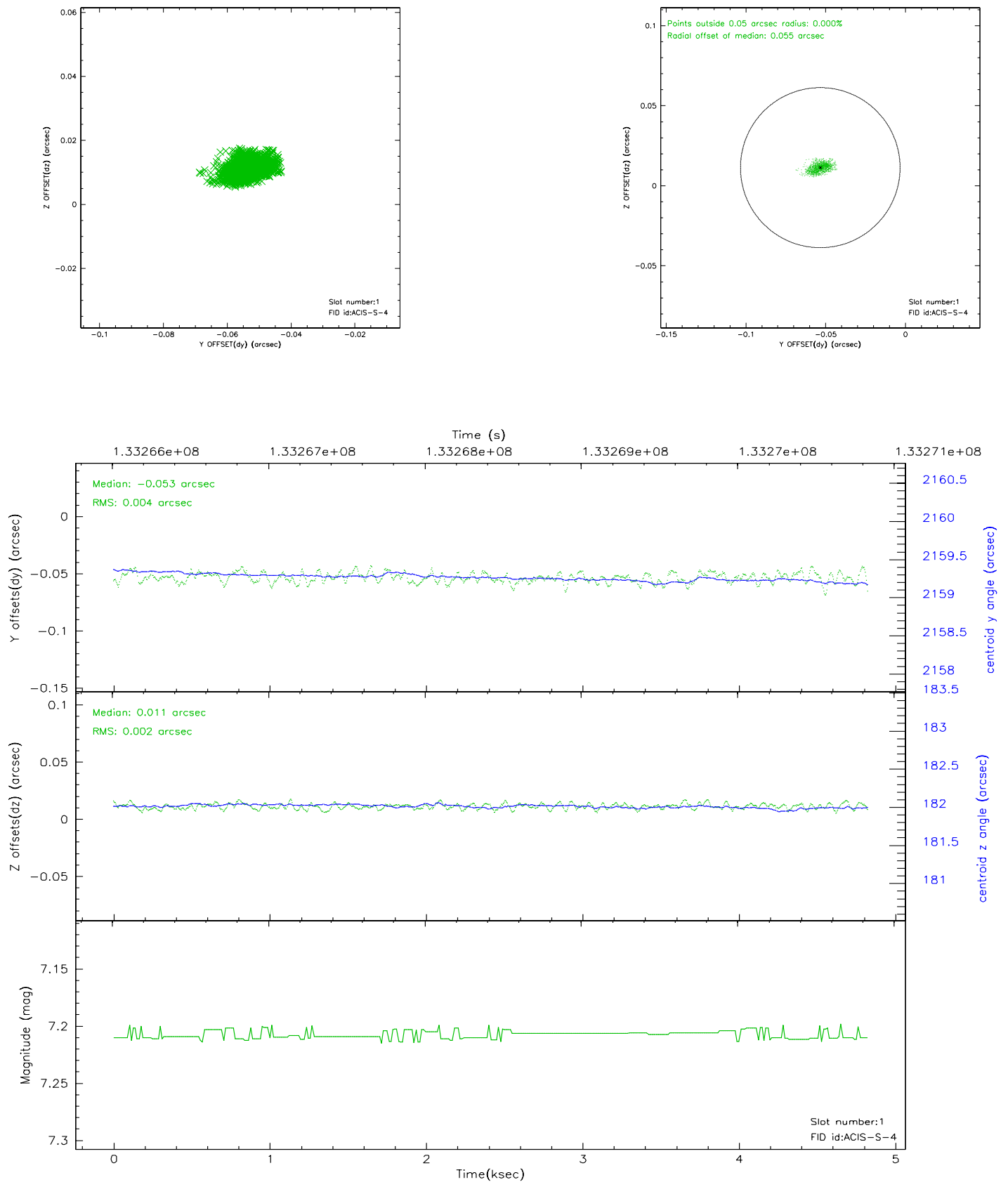


## 2.5 FID Slots

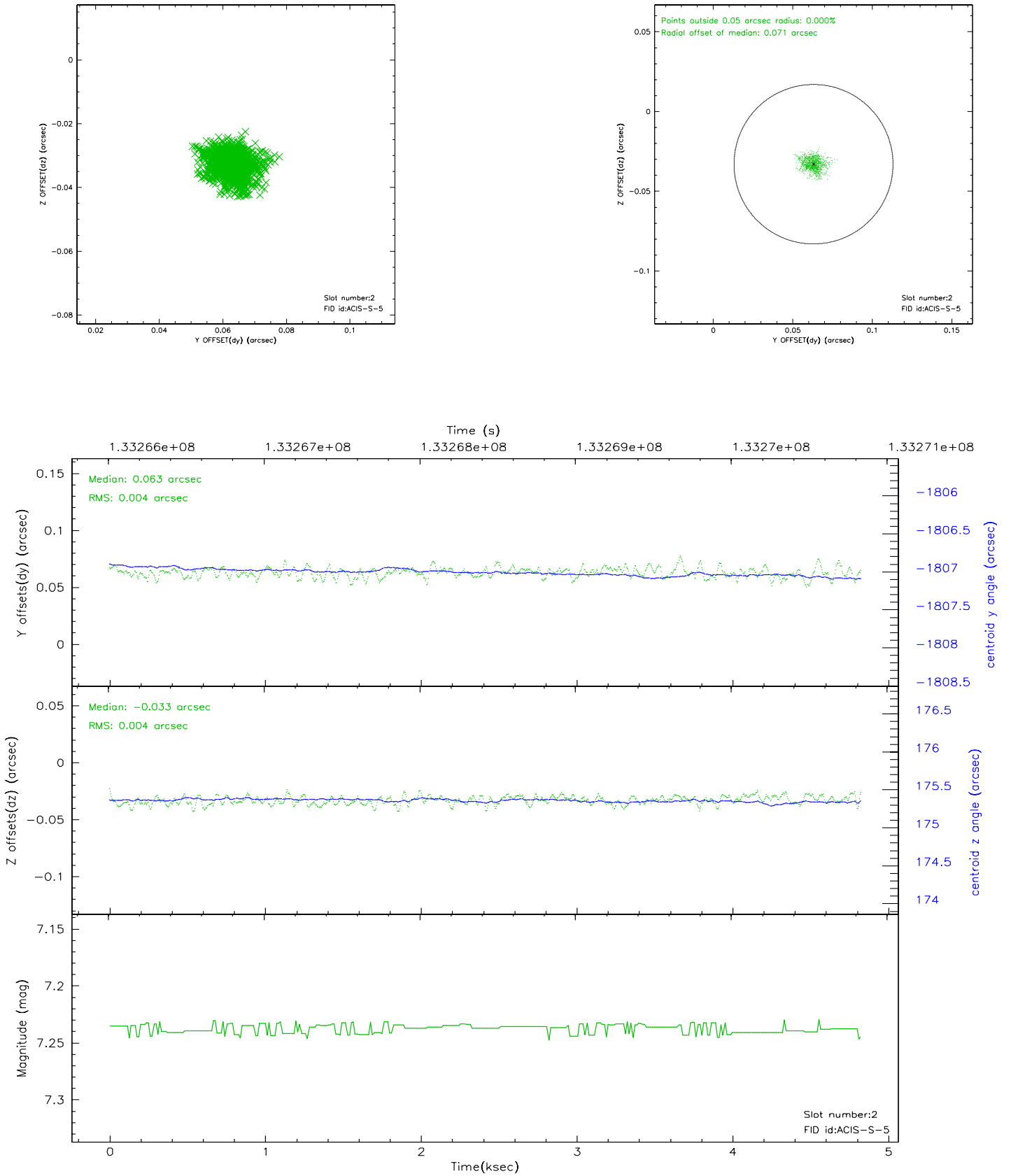
### 2.5.1 Slot 0



## 2.5.2 Slot 1

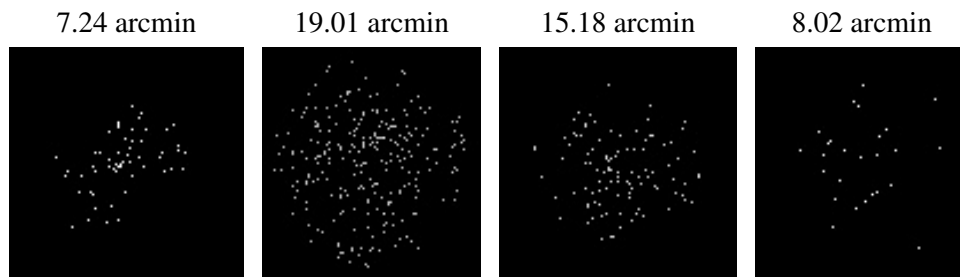


### 2.5.3 Slot 2





### 3 Point Sources



## A Summary

### A.1 Status

V&V Scientist	Jen Lauer
V&V Date (YYYY-MM-DD)	2006.09.08
V&V Edition	1
V&V Disposition and Status	OK
V&V Charge Time	4.819

### A.2 Comments