

V&V Reference Report

L2 ASCDS Version : 8.4.5

Observation 3054 - L2 Version 3
Chandra X-Ray Center

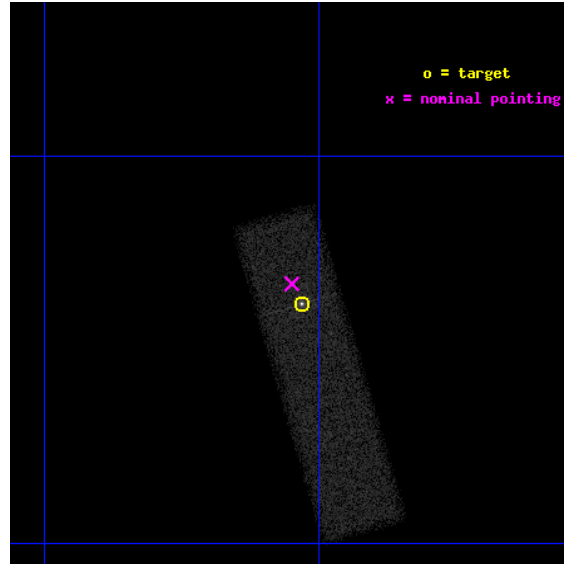
L2 Processing Date : Oct 20 2012

Contents

1	Front	2
2	OBI	3
2.1	OBI	3
2.1.1	Images	3
2.1.2	Bias	3
2.1.3	Parameters	4
2.1.4	Events	4
2.2	Compared Parameters	5
2.3	Aspect	6
2.4	Star Slots	9
2.4.1	Slot 3	9
2.4.2	Slot 4	10
2.4.3	Slot 5	11
2.4.4	Slot 6	12
2.4.5	Slot 7	13
2.5	FID Slots	14
2.5.1	Slot 0	14
2.5.2	Slot 1	15
2.5.3	Slot 2	16
A	Summary	17
A.1	Status	17
A.2	Comments	17

1 Front

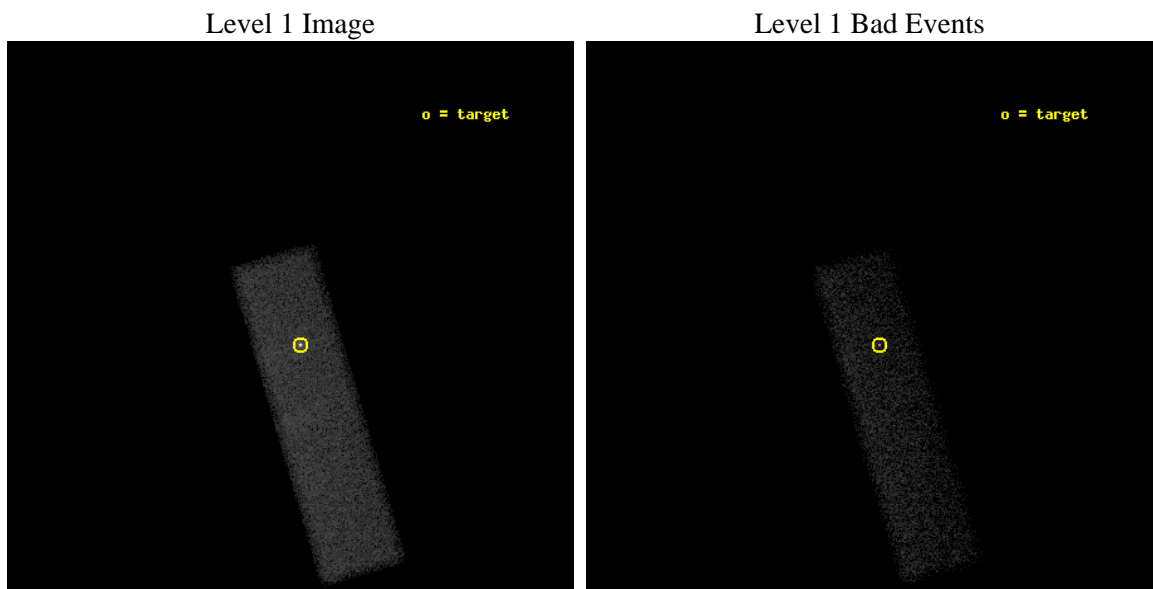
seq_num	700493	Sequence number
obs_id	3054	Observation id
title	THE DYNAMICS OF CLASSICAL DOUBLE RADIO SOURCES: TESTING SELF-SIMILAR MODELS	Proposal title
observer	Dr Martin Hardcastle	Principal investigator
object	3C215	Source name
dtcycle	0	
cycle	P	events from which exps? Prim/Second/Both
ra_targ	136.632917	Observer's specified target RA [deg]
dec_targ	16.769917	Observer's specified target Dec [deg]
ra_nom	136.63741102929	Nominal RA [deg]
dec_nom	16.778557885096	Nominal Dec [deg]
roll_nom	73.583298492932	Nominal Roll [deg]
revision	3	Processing version of data
ontime	35537.559509516	Sum of GTIs [s]
livetime	33803.442889295	Livetime [s]
ontime7	35537.559509516	Sum of GTIs [s]
l2events	47313	Number of level 2 events



2 OBI

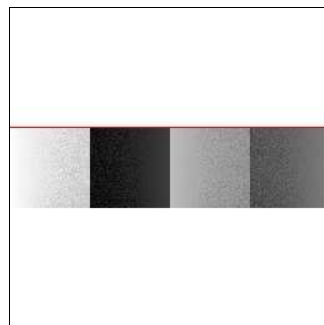
2.1 OBI

2.1.1 Images



2.1.2 Bias

Chip 7



2.1.3 Parameters

obi_num	1	Obi number	sched_exp_time	35000.000000	[s] Scheduled observation exposure time
ascdsver	8.4.5	Processing system revision	ontime	35537.559509516	Sum of GTIs [s]
caldsver	4.5.2	 	ontime7	35537.559509516	Sum of GTIs [s]
date	2012-10-20T17:23:59	Date and time of file creation	l1events	92108	Number of level 1 events
revision	3	Processing version of data			

2.1.4 Events

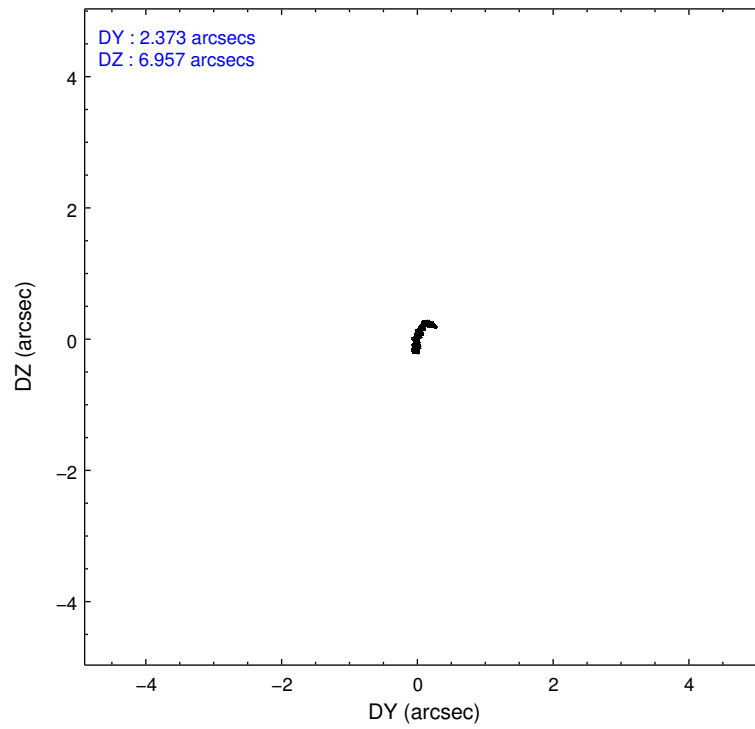
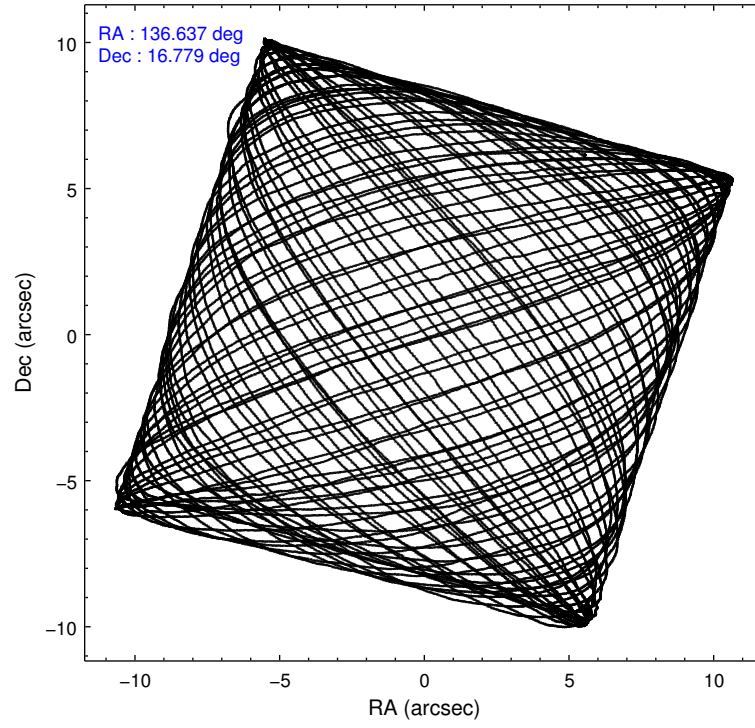
	ccd 7
level 1 events	92108
rejected events	43707
rejected %	47%

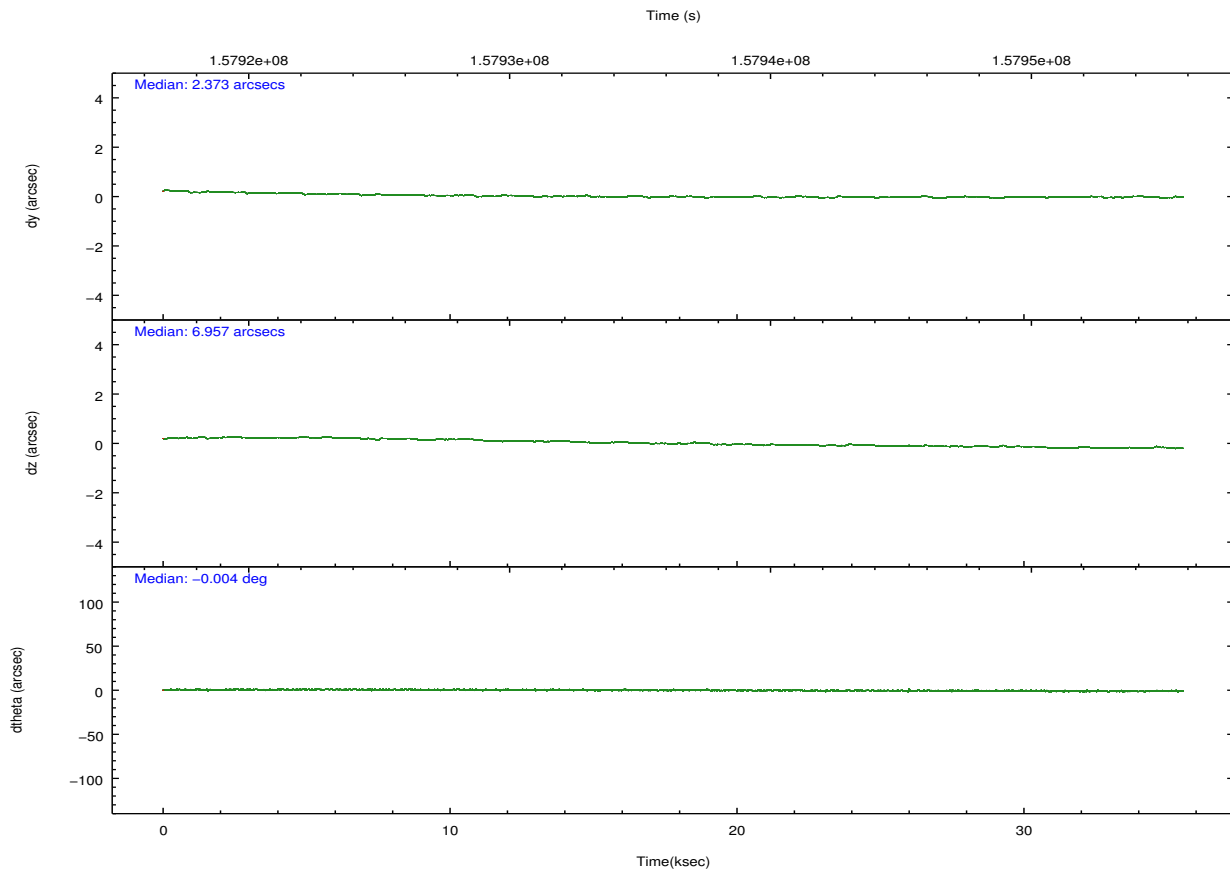
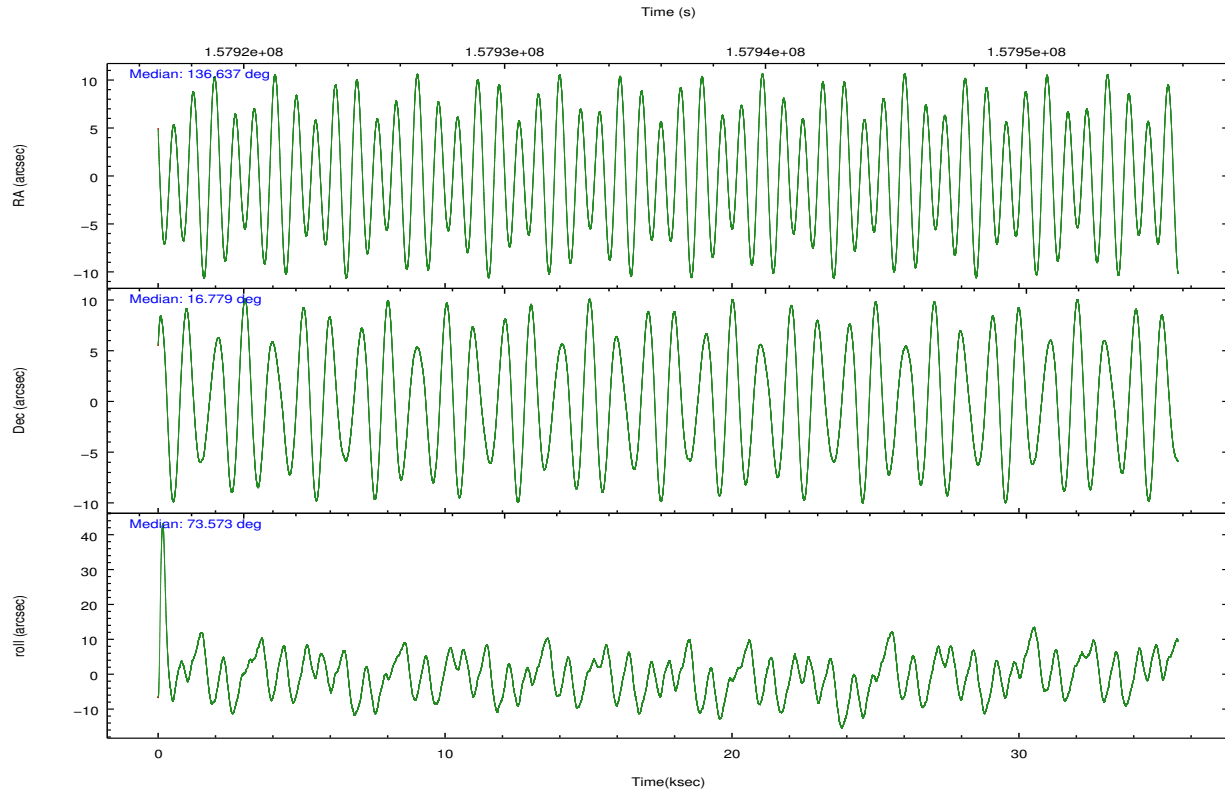
	ccd 7
grade 0 events	7862
	8%
grade 1 events	178
	0%
grade 2 events	10291
	11%
grade 3 events	5528
	6%
grade 4 events	5387
	5%
grade 5 events	7770
	8%
grade 6 events	19655
	21%
grade 7 events	35437
	38%

2.2 Compared Parameters

Parameter	Planned	Actual	Parameter	Planned	Actual
Instrument	ACIS	ACIS	Obspar format version number	7	7
Detector	ACIS-7	ACIS-7	Obspar file type	PREDICTED	ACTUAL
Grating	NONE	NONE	Obspar update status	NONE	UPDATED
Data mode	FAINT	FAINT	Number of optional ACIS chips dropped	0	0
Observation mode	POINTING	POINTING	On-chip summing requested	N	N
[deg] Pointing RA	136.644473	136.6374110292876	Subarray requested	CUSTOM	1/4
[deg] Pointing Dec	16.752190	16.77855788509599	Subarray start row	384	385
[deg] Pointing Roll	73.424651	73.58329849293192	Subarray row count	256	256
[mm] SIM focus pos	-0.684267	-0.6828225247311905	Alternating exposures requested	N	N
[mm] SIM defocus	0	0.001444936568705701	[s] Primary exposure time	0.000000	0.8
[mm] SIM translation stage pos	-190.132523	-190.1400660498719			
[mm] SIM translation stage offset	0	0.00754346686406393			
[s] Observation start time (MET)	157919038.184000	157917902.32362			
Observation start date	2003-01-02T18:22:54	2003-01-02T18:05:02			
[s] Observation end time (MET)	157954038.184000	157954898.16266			
Observation end date	2003-01-03T04:06:14	2003-01-03T04:21:38			
Read mode	TIMED	TIMED			

2.3 Aspect



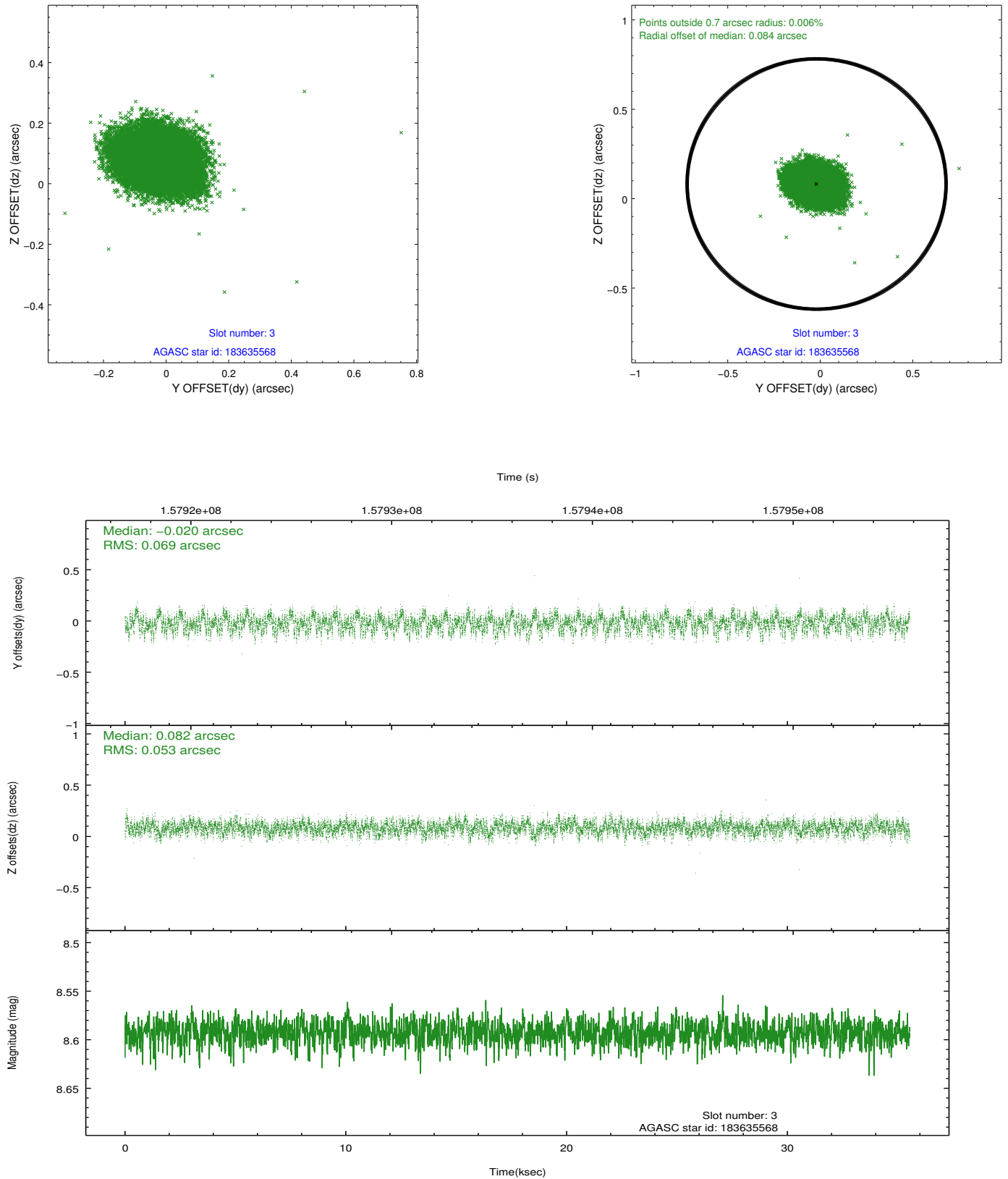


Slot Statistics

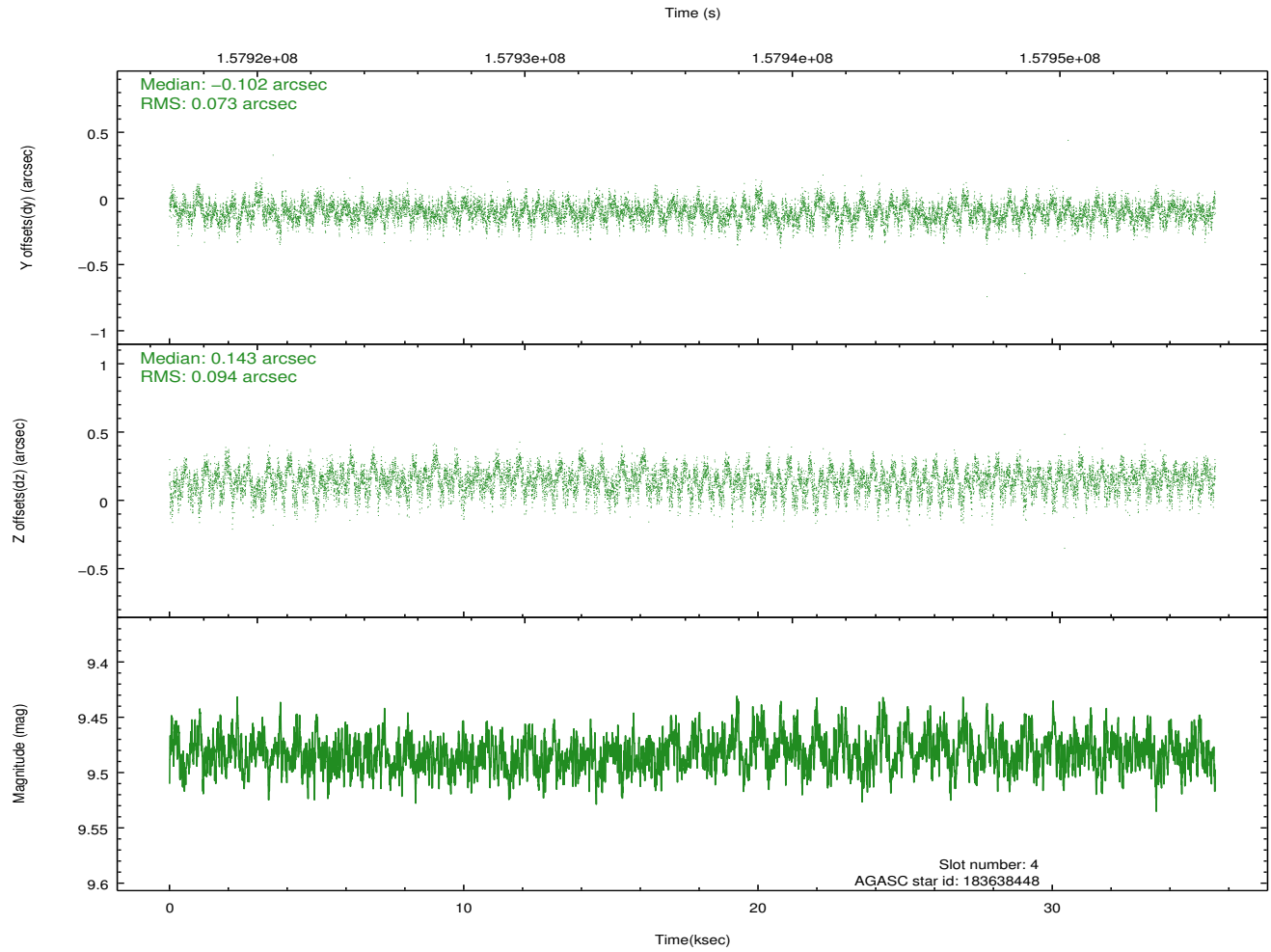
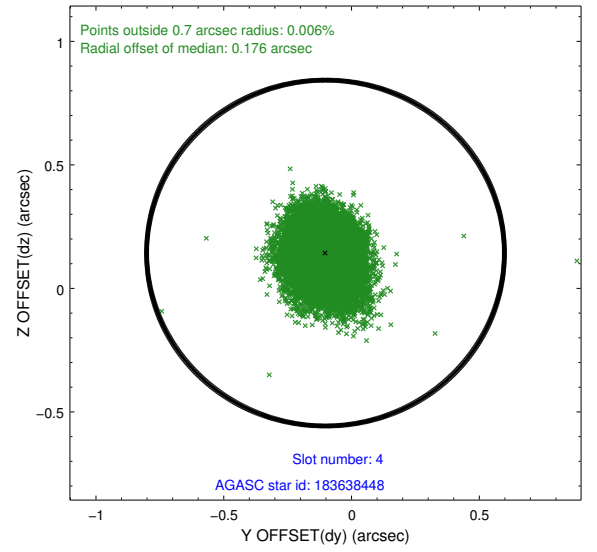
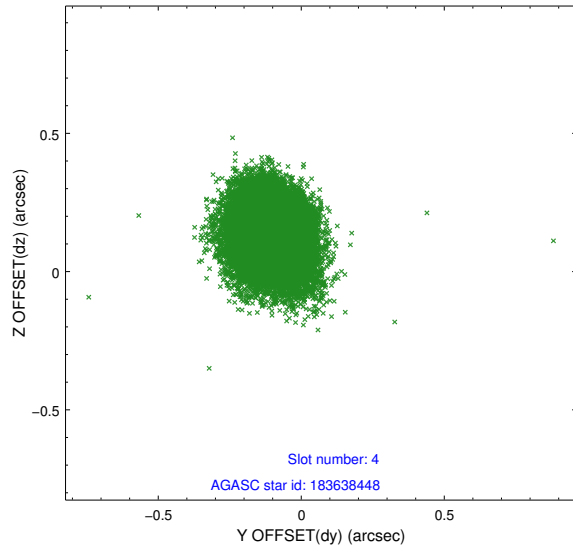
slot	status	id	mag	n_pts	med_dy	med_dz	dr1	dr2	ra	dec	mean_y	mean_z
0	FID	ACIS-S-2	7.12	8669	-0.032	-0.001	0.008	0.013	0.000000	0.000000	-755.05	-1728.15
1	FID	ACIS-S-4	7.20	8669	-0.012	0.016	0.006	0.010	0.000000	0.000000	2158.22	180.33
2	FID	ACIS-S-5	7.24	8669	0.014	-0.006	0.009	0.015	0.000000	0.000000	-1807.81	174.00
3	GUIDE	183635568	8.59	17332	-0.020	0.082	0.093	0.146	137.226478	17.234255	2237.30	-1421.46
4	GUIDE	183638448	9.48	17054	-0.102	0.143	0.127	0.203	137.310621	16.674120	390.24	-2280.73
5	GUIDE	183640504	9.76	16944	0.033	-0.149	0.124	0.200	136.133104	16.834453	-216.56	1773.75
6	GUIDE	183640984	8.47	17330	-0.067	-0.078	0.069	0.109	136.439691	17.390131	2000.66	1330.14
7	GUIDE	183645736	9.77	17328	0.151	0.010	0.126	0.196	136.797375	16.346106	-1249.67	-923.30

2.4 Star Slots

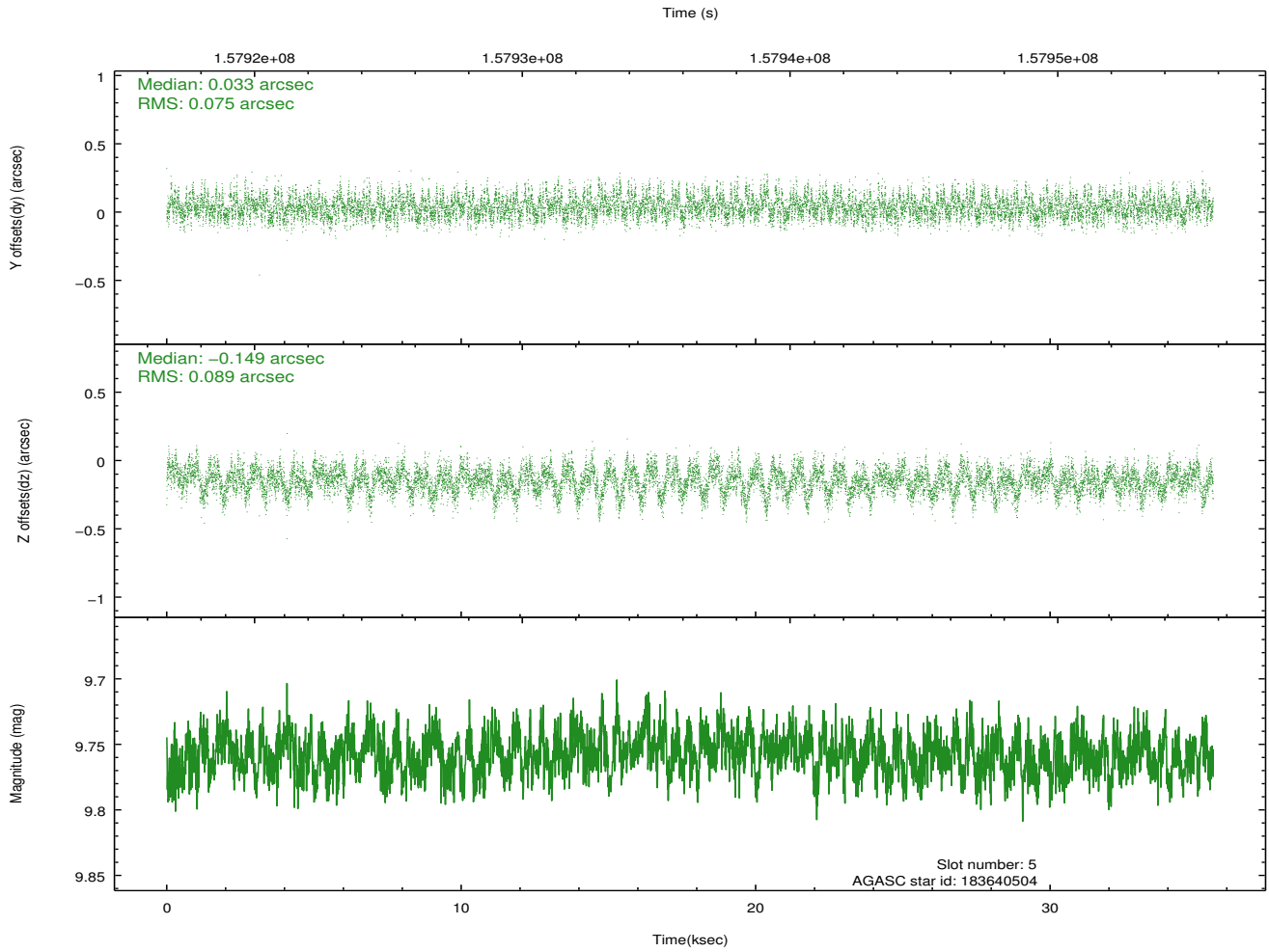
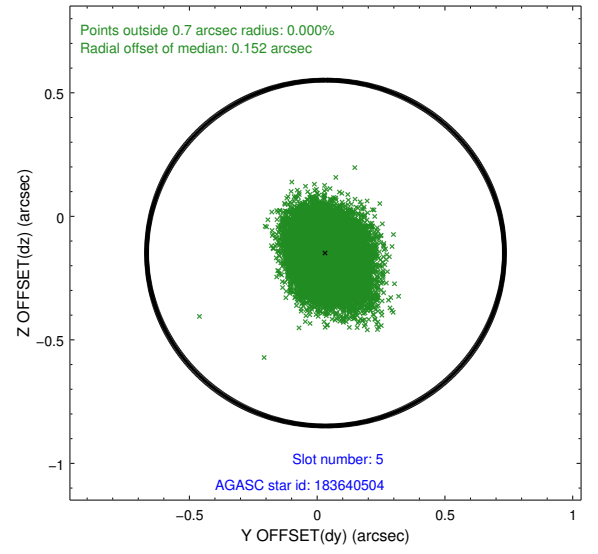
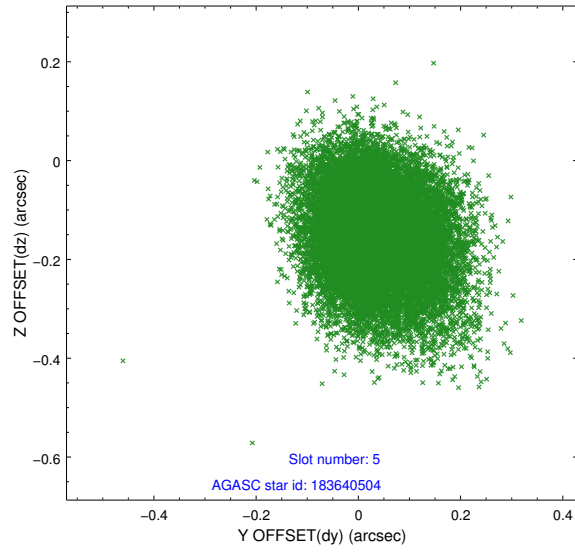
2.4.1 Slot 3



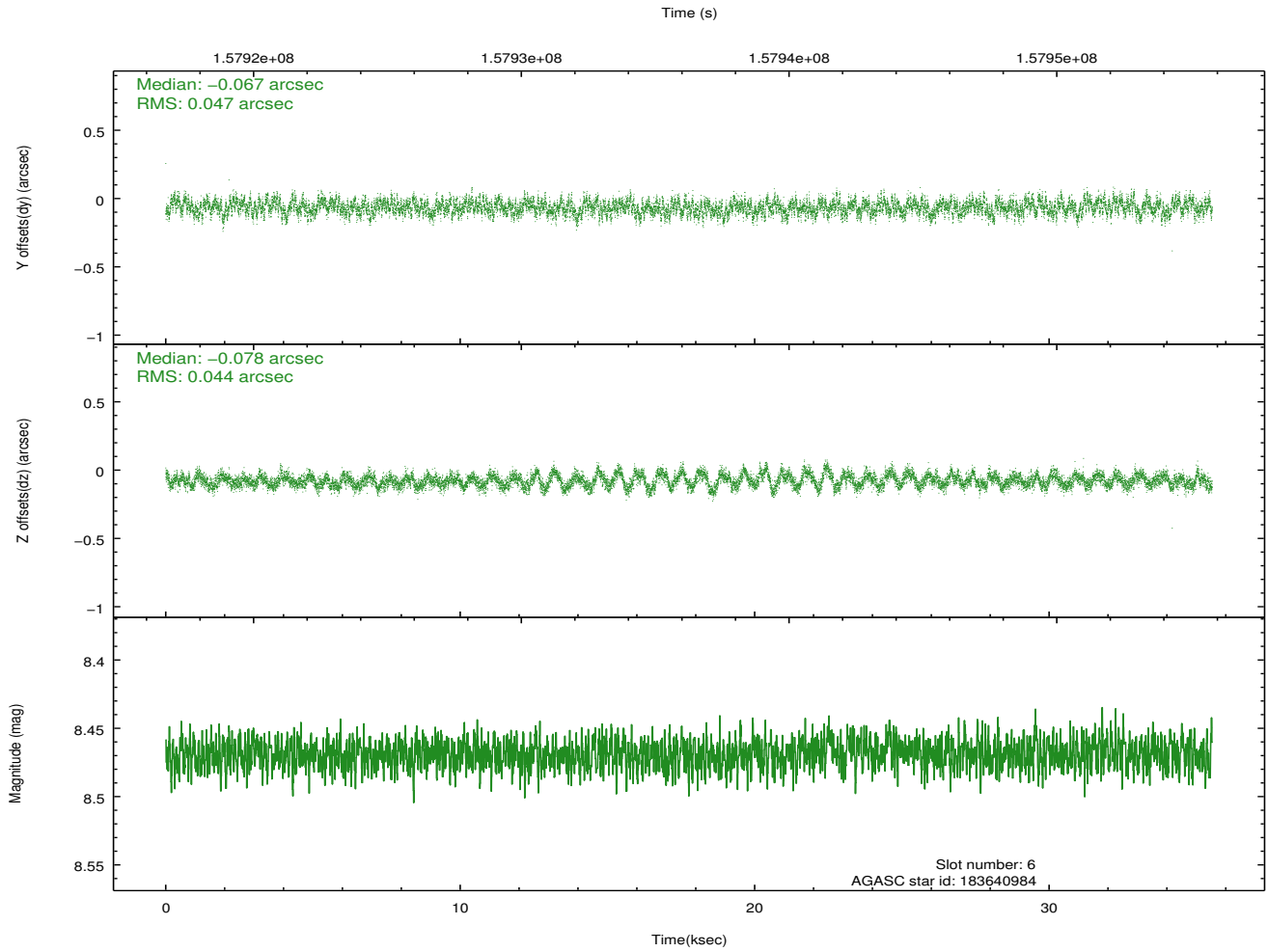
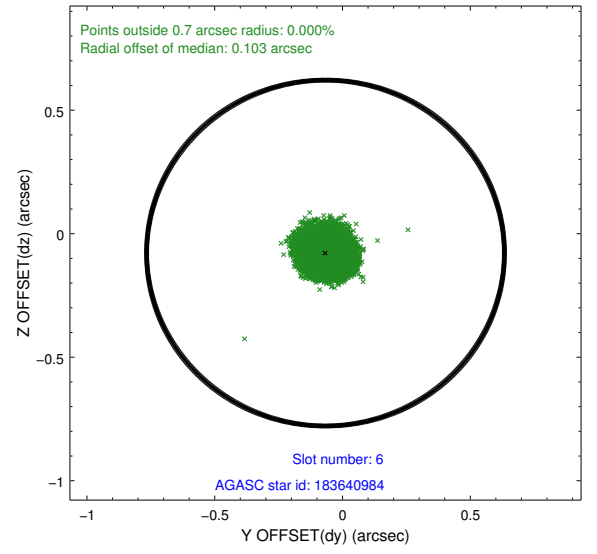
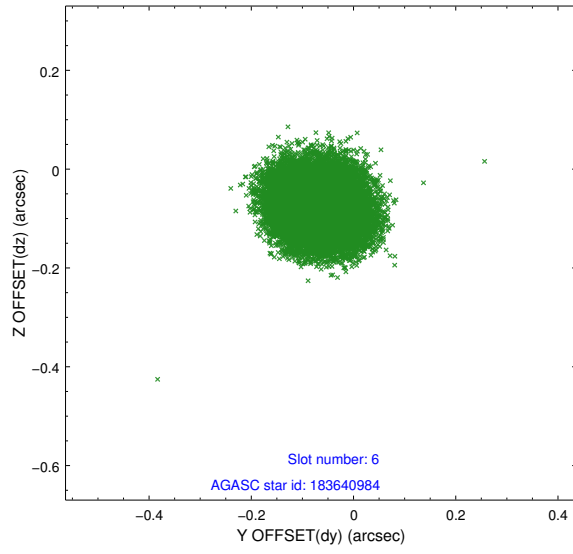
2.4.2 Slot 4



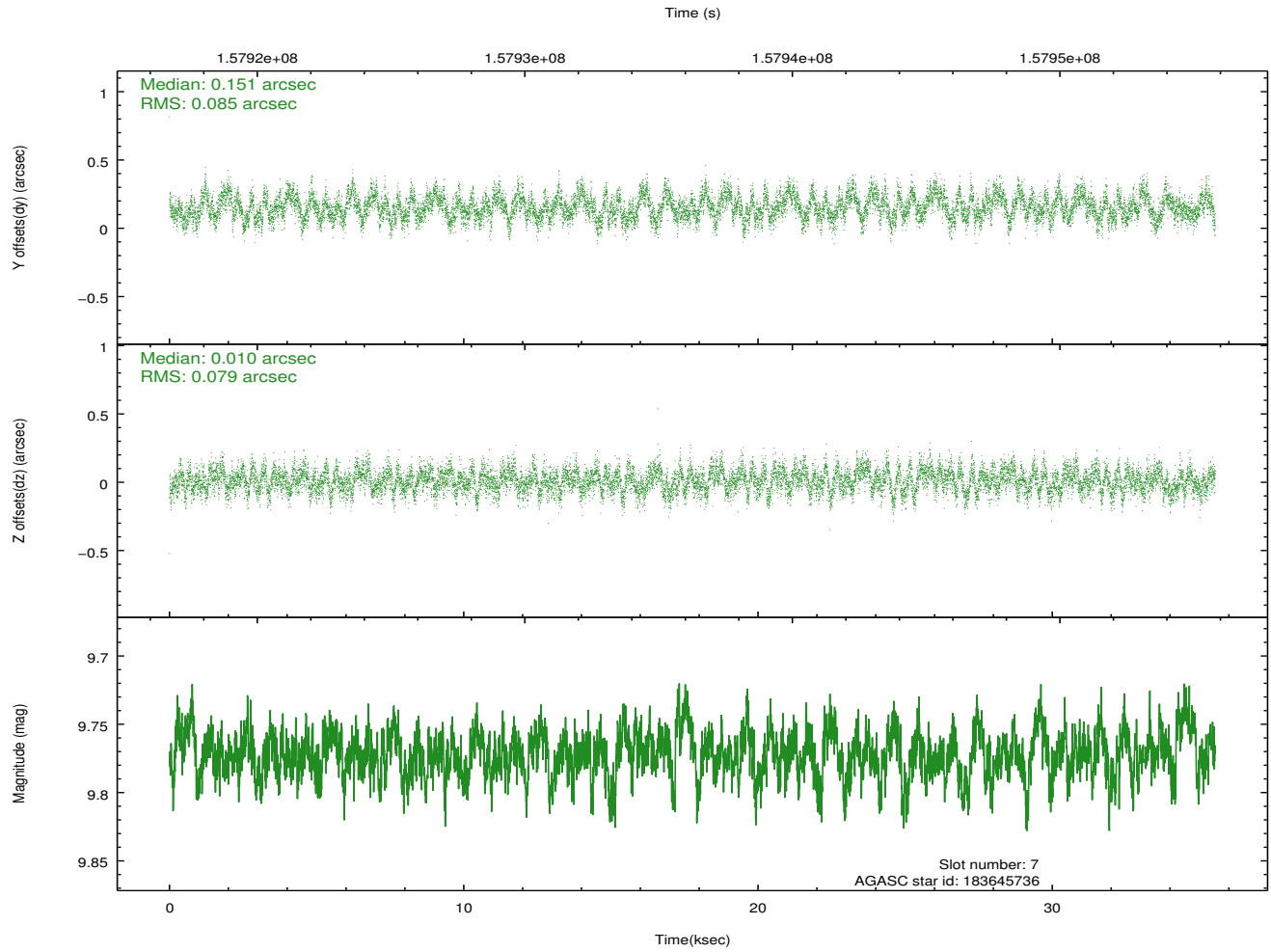
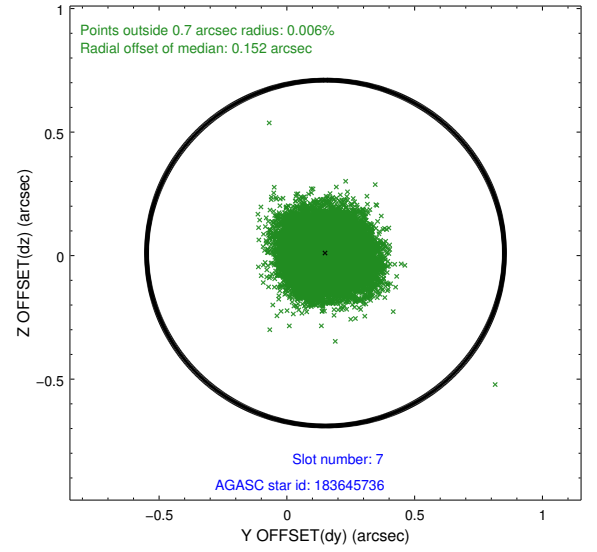
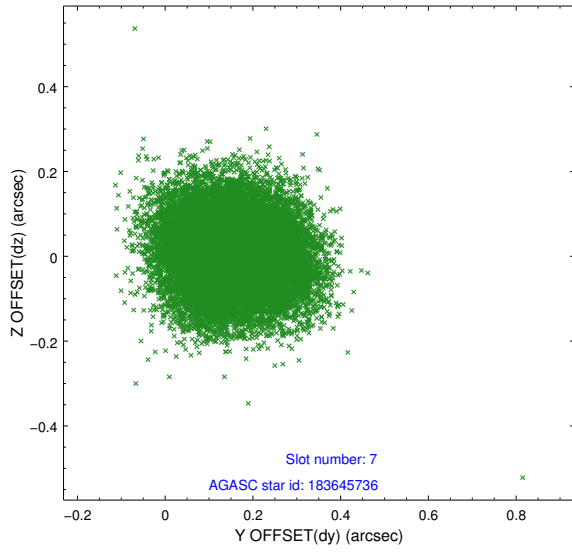
2.4.3 Slot 5



2.4.4 Slot 6

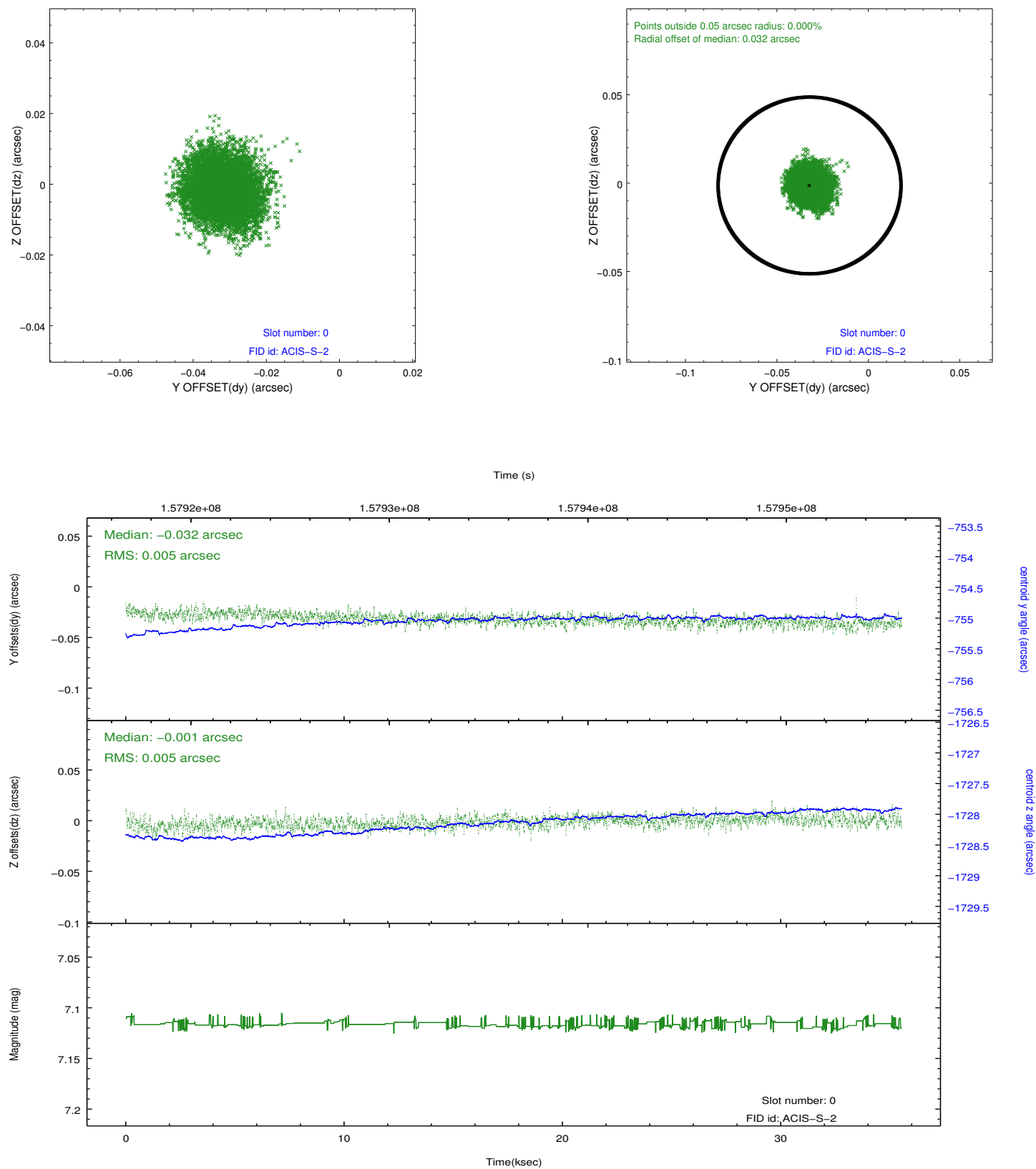


2.4.5 Slot 7

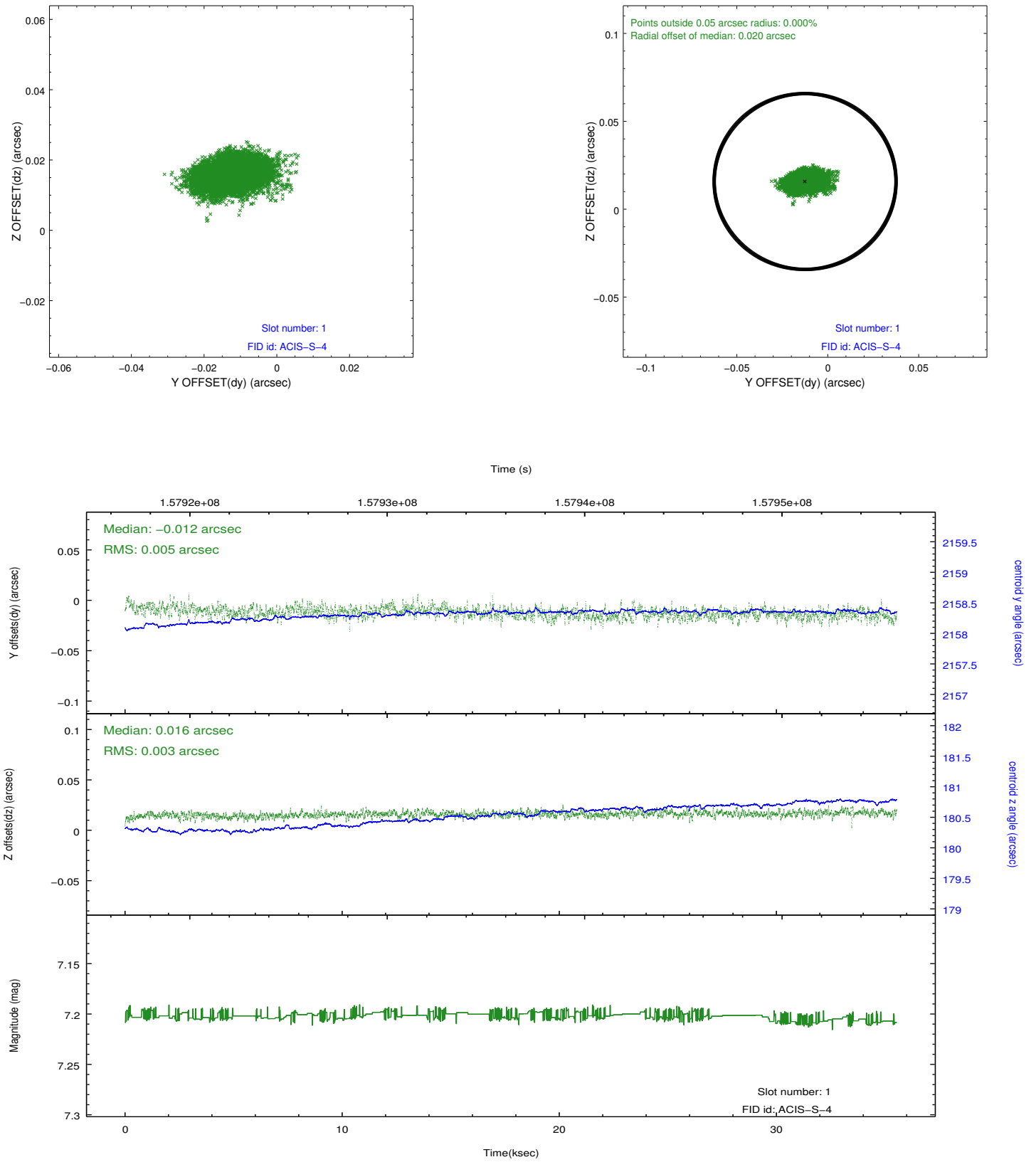


2.5 FID Slots

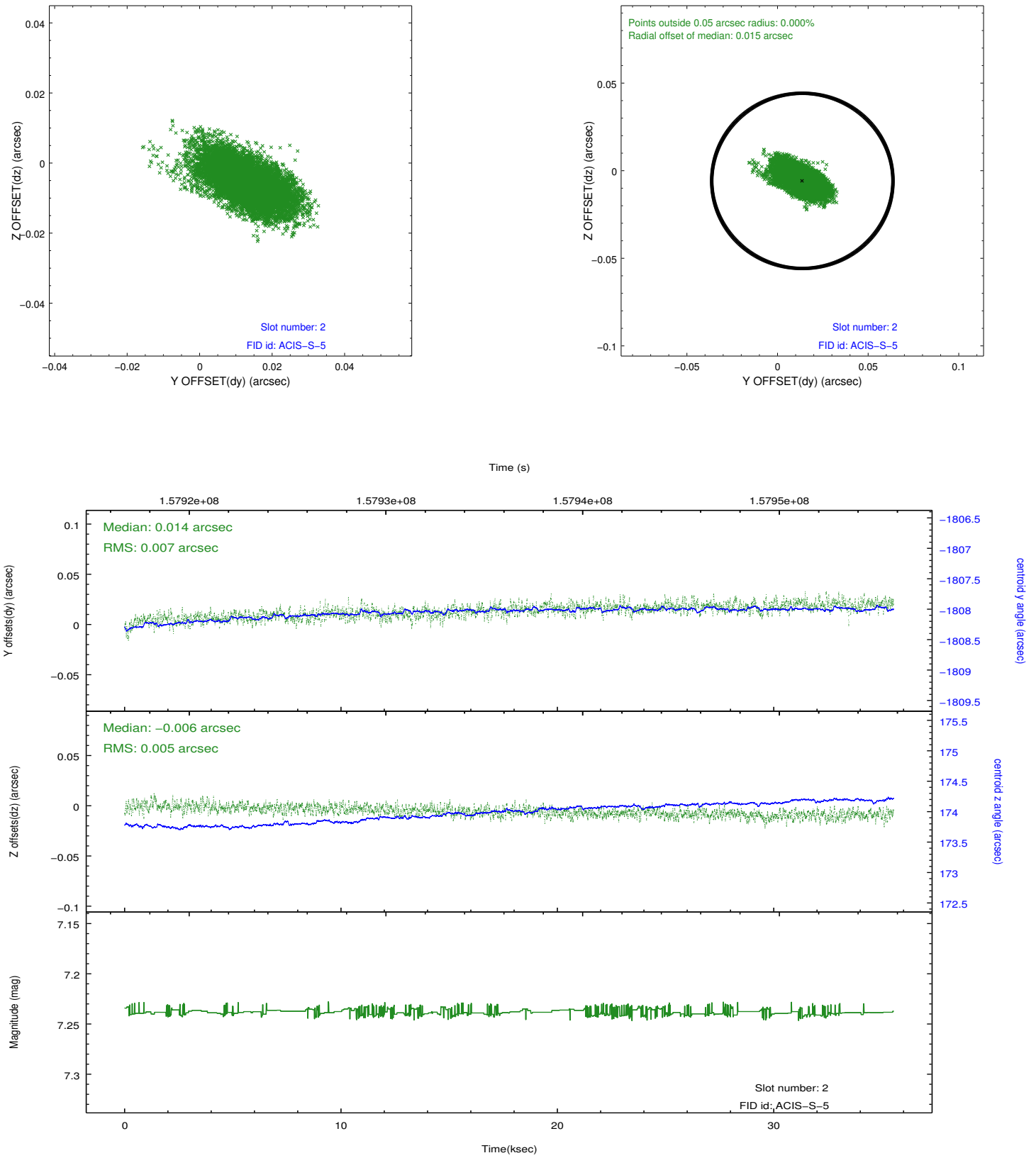
2.5.1 Slot 0



2.5.2 Slot 1



2.5.3 Slot 2



A Summary

A.1 Status

V&V Scientist	Jen Lauer
V&V Date (YYYY-MM-DD)	2012.12.06
V&V Edition	1
V&V Disposition and Status	OK
V&V Charge Time	35.537

A.2 Comments