

V&V Reference Report

L2 ASCDS Version : 7.6.9

Observation 3037 - L2 Version 001
Chandra X-Ray Center

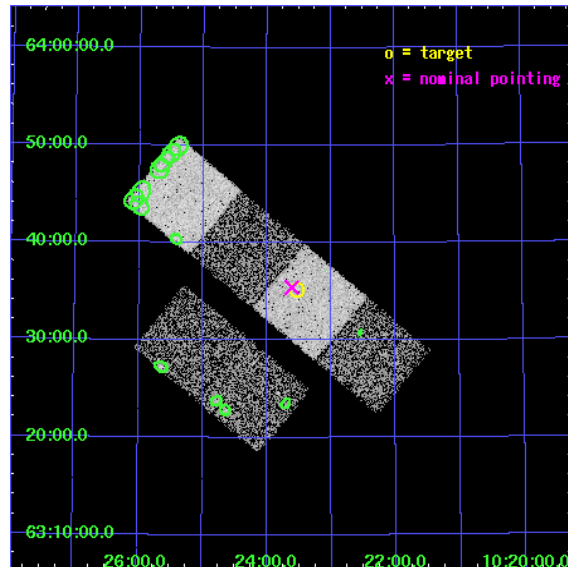
L2 Processing Date : Oct 5 2006

Contents

1	Front	2
2	OBI	3
2.1	OBI	3
2.1.1	Images	3
2.1.2	Bias	3
2.1.3	Parameters	4
2.1.4	Events	4
2.2	Compared Parameters	5
2.3	Aspect	6
2.4	Star Slots	9
2.4.1	Slot 3	9
2.4.2	Slot 4	10
2.4.3	Slot 5	11
2.4.4	Slot 6	12
2.4.5	Slot 7	13
2.5	FID Slots	14
2.5.1	Slot 0	14
2.5.2	Slot 1	15
2.5.3	Slot 2	16
3	Point Sources	17
A	Summary	18
A.1	Status	18
A.2	Comments	18

1 Front

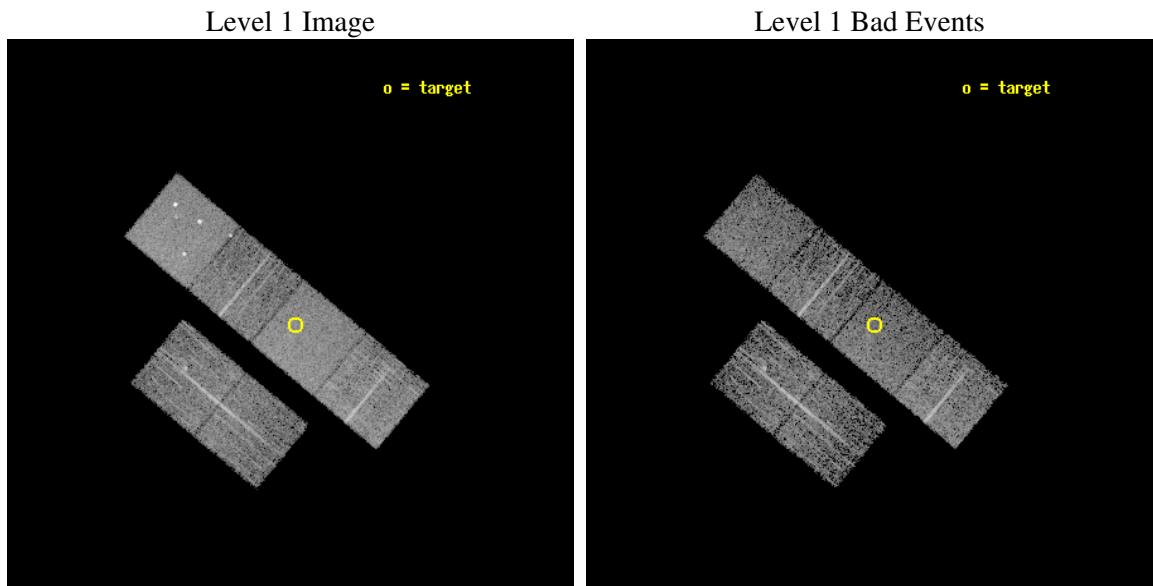
seq_num	700476
obs_id	3037
title	A CHANDRA AND XMM-NEWTON STUDY OF THE MOST DISTANT QUASARS: X-RAYING THE FIRST MASSIVE BLACK HOLES
observer	Prof. William Brandt
object	SDSS102332+633508
dtcycle	0
cycle	P
ra_targ	155.88375
dec_targ	63.585583
ra_nom	155.90276719059
dec_nom	63.590398975864
roll_nom	39.795260597372
revision	2
ontime	4755.1999822855
livetime	4694.9867768721
ontime2	4755.1999822855
ontime3	4755.1999822855
ontime5	4755.1999822855
ontime6	4755.1999822855
ontime7	4755.1999822855
ontime8	4751.9590220153
l2events	48658



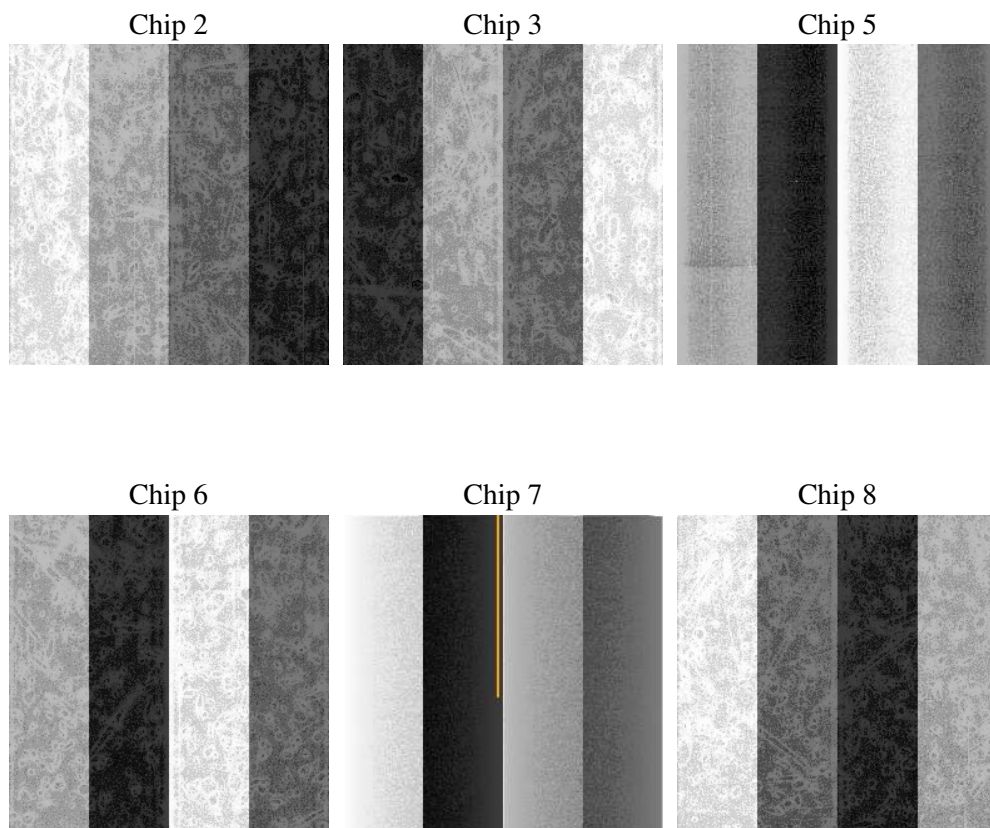
2 OBI

2.1 OBI

2.1.1 Images



2.1.2 Bias



2.1.3 Parameters

obi_num	0
ascdsver	7.6.9
caldsver	3.2.3
date	2006-10-05T22:23:17
revision	2

sched_exp_time	5000.000000
ontime	4757.7874567807
ontime2	4757.7873969674
ontime3	4761.0284170508
ontime5	4757.7874268889
ontime6	4761.0284170508
ontime7	4757.7874567807
ontime8	4757.7873570919
l1events	224841

2.1.4 Events

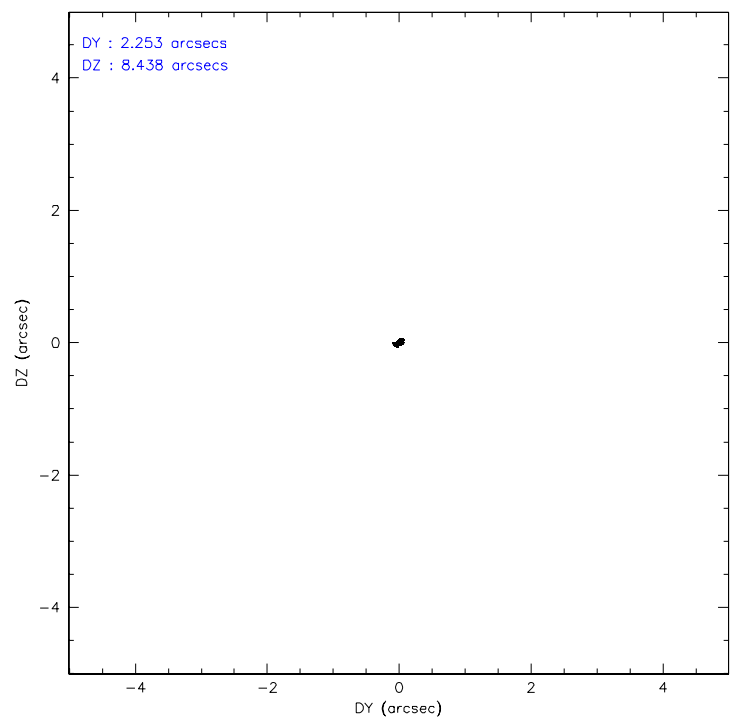
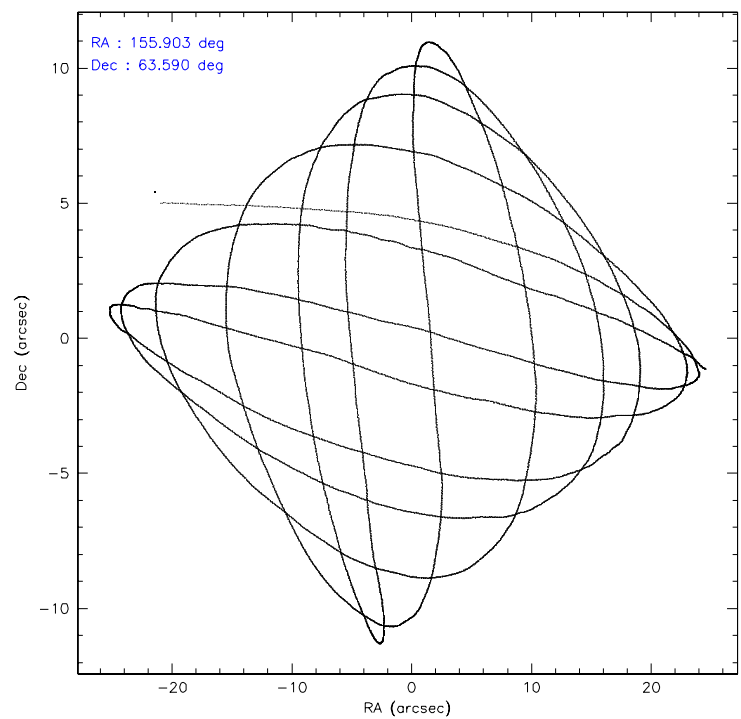
	ccd 2	ccd 3	ccd 5	ccd 6	ccd 7	ccd 8
level 1 events	32406	29481	47571	31242	41929	42212
rejected events	28604	25717	25084	27484	25393	34052
rejected %	88%	87%	52%	87%	60%	80%

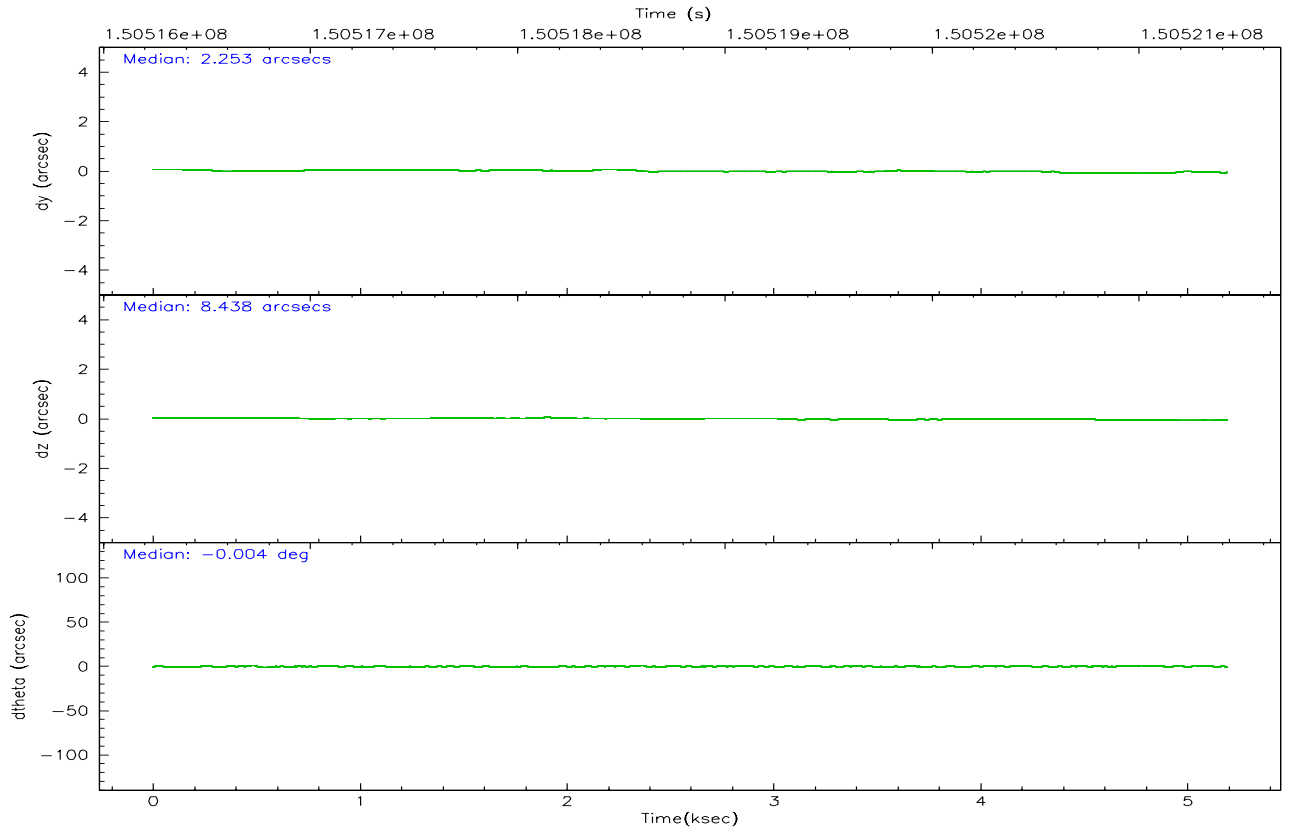
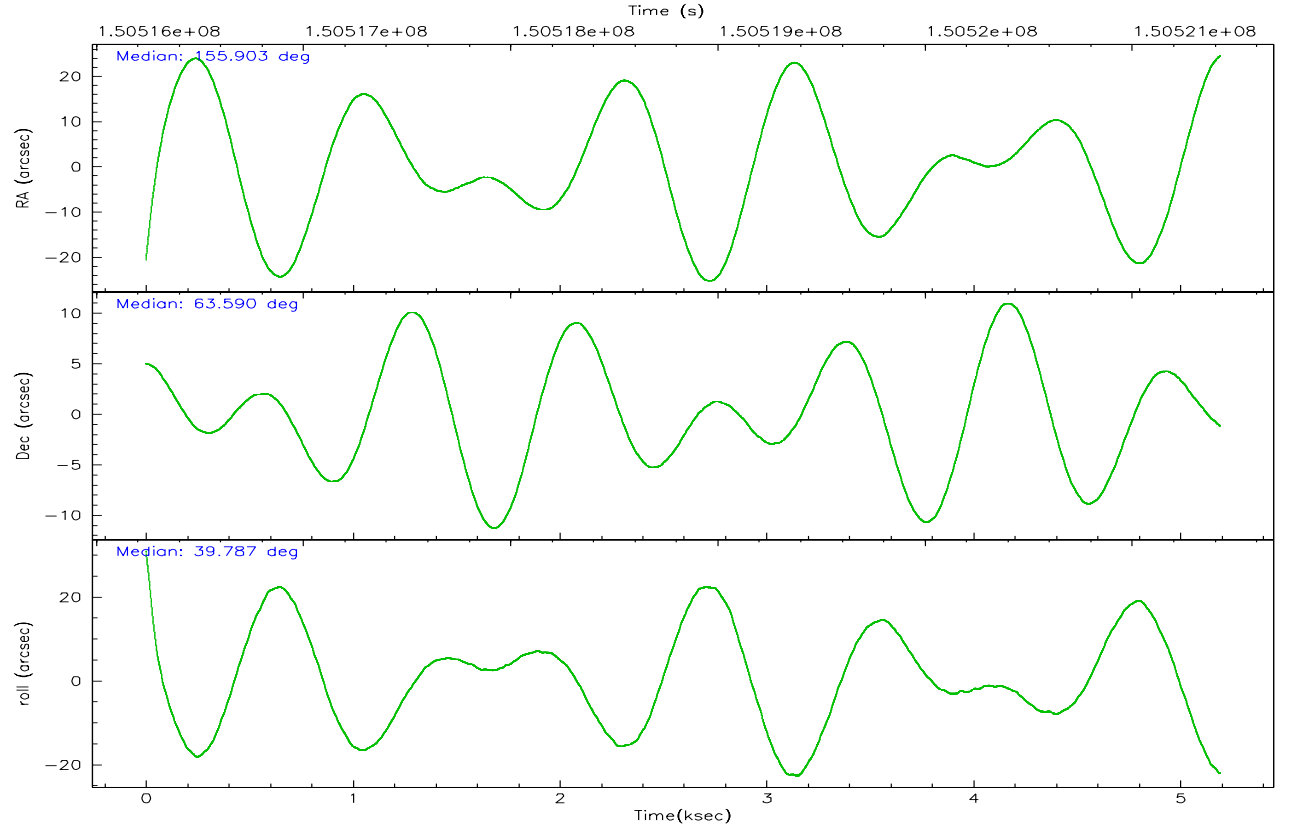
	ccd 2	ccd 3	ccd 5	ccd 6	ccd 7	ccd 8
grade 0 events	1699	1736	3135	1566	1031	2628
	5%	5%	6%	5%	2%	6%
grade 1 events	17	16	130	17	23	44
	0%	0%	0%	0%	0%	0%
grade 2 events	732	641	6802	758	4195	1678
	2%	2%	14%	2%	10%	3%
grade 3 events	361	355	488	385	888	908
	1%	1%	1%	1%	2%	2%
grade 4 events	384	388	470	349	877	859
	1%	1%	0%	1%	2%	2%
grade 5 events	1197	1339	2158	1416	2677	1716
	3%	4%	4%	4%	6%	4%
grade 6 events	627	652	11610	705	9555	2092
	1%	2%	24%	2%	22%	4%
grade 7 events	27389	24354	22778	26046	22683	32287
	84%	82%	47%	83%	54%	76%

2.2 Compared Parameters

Parameter	Planned	Actual	Parameter	Planned	Actual
Instrument	ACIS	ACIS	Obspar format version number	6	6
Detector	ACIS-235678	ACIS-235678	Obspar file type	PREDICTED	ACTUAL
Grating	NONE	NONE	Obspar update status	NONE	UPDATED
Data mode	FAINT	FAINT	Number of optional ACIS chips dropped	0	0
Observation mode	POINTING	POINTING	On-chip summing requested	N	N
Pointing RA	155.882273	155.9027671905864	Subarray requested	NONE	NONE
Pointing Dec	63.564699	63.59039897586442	Alternating exposures requested	N	N
Pointing Roll	39.656984	39.79526059737239	Primary exposure time	0.000000	3.2
SIM focus pos (mm)	-0.684267	-0.6828225247311905			
SIM defocus (mm)	0	0.001444936568705701			
SIM translation stage pos (mm)	-190.132523	-190.1400660498719			
SIM translation stage offset (mm)	0	0.00754346686406393			
Observation start time	150516430.184000	150515426.32791			
Observation start date	2002-10-09T02:06:06	2002-10-09T01:50:26			
Observation end time	150521430.184000	150521886.39067			
Observation end date	2002-10-09T03:29:26	2002-10-09T03:38:06			
Read mode	TIMED	TIMED			

2.3 Aspect



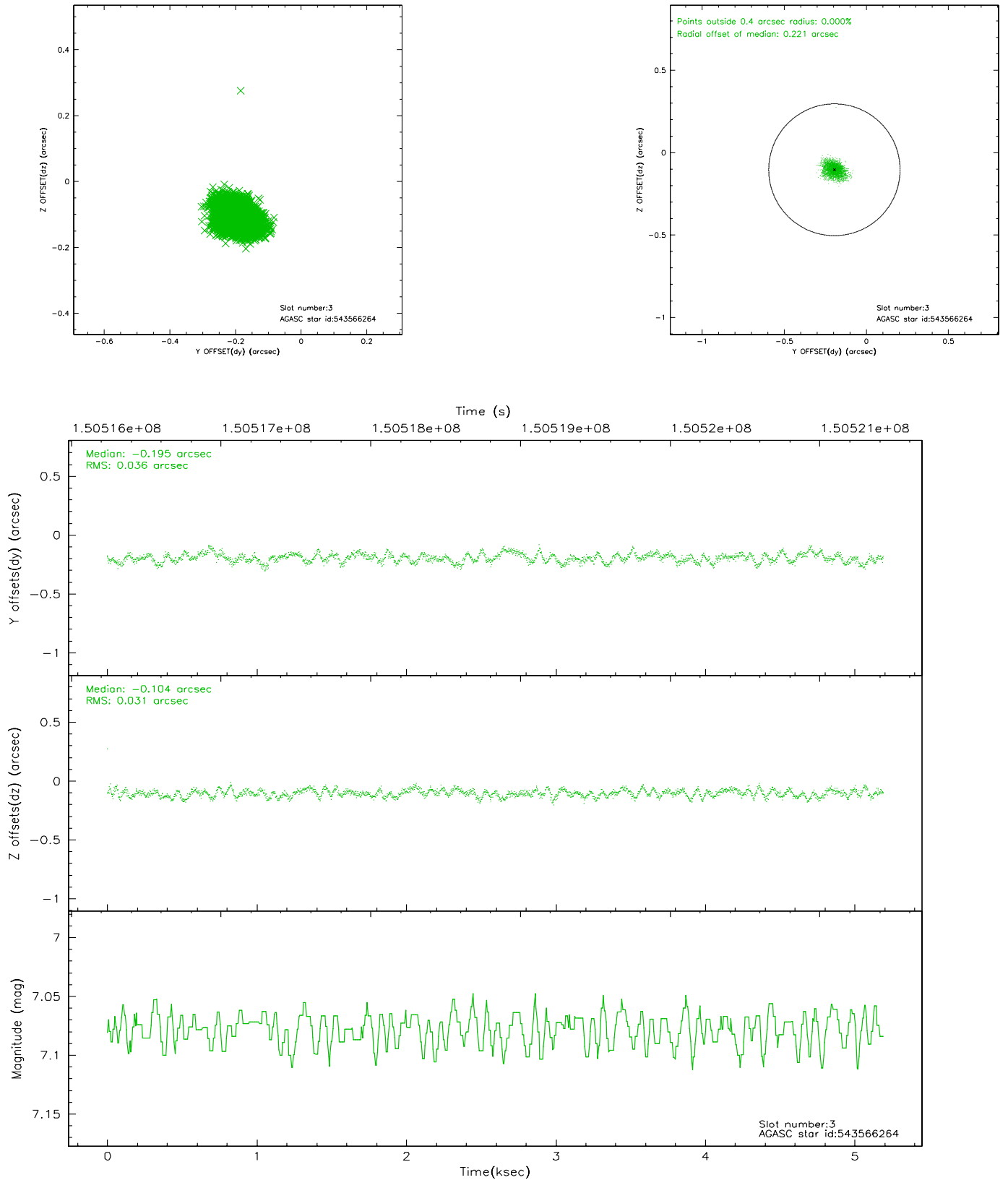


Slot Statistics

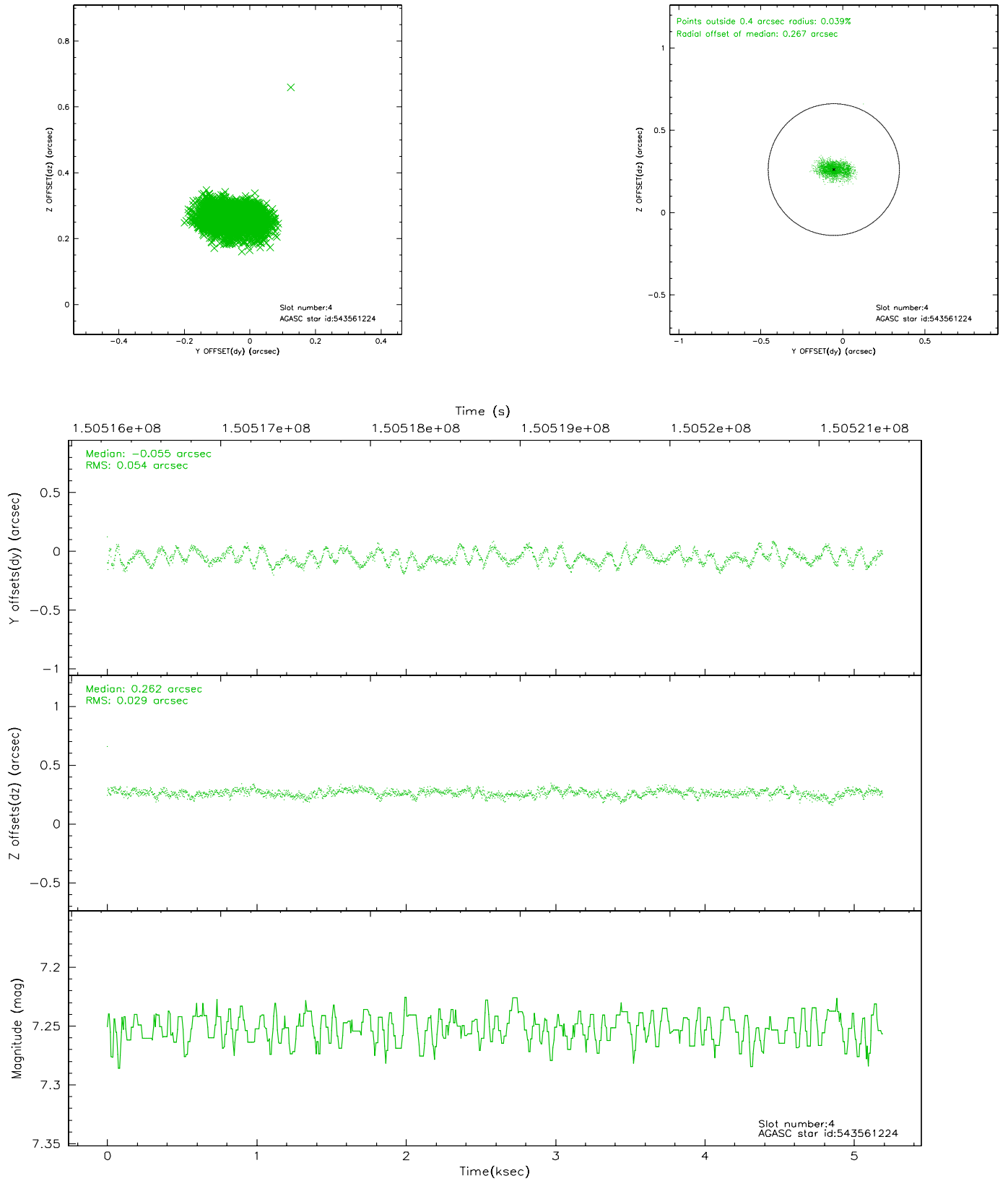
slot	status	id	mag	n_pts	med_dy	med_dz	dr1	dr2	ra	dec	mean_y	mean_z
0	FID	ACIS-S-2	7.10	1267	-0.018	0.007	0.007	0.011	0.000000	0.000000	-754.90	-1729.63
1	FID	ACIS-S-4	7.20	1266	-0.045	0.007	0.005	0.008	0.000000	0.000000	2157.83	177.63
2	FID	ACIS-S-5	7.23	1266	0.031	-0.005	0.006	0.011	0.000000	0.000000	-1806.18	172.64
3	GUIDE	543566264	7.08	2533	-0.195	-0.104	0.050	0.082	156.254271	64.157898	1812.39	1273.39
4	GUIDE	543561224	7.25	2534	-0.055	0.262	0.067	0.104	157.567163	63.348757	1621.69	-2305.82
5	GUIDE	543564984	8.51	2534	0.002	-0.069	0.056	0.090	156.329553	63.934042	1394.84	573.63
6	GUIDE	543562104	9.00	2531	0.119	-0.055	0.067	0.110	155.237007	63.724275	-421.84	1103.04
7	GUIDE	543559544	9.59	2532	0.124	-0.030	0.097	0.155	155.488993	63.856379	190.21	1208.84

2.4 Star Slots

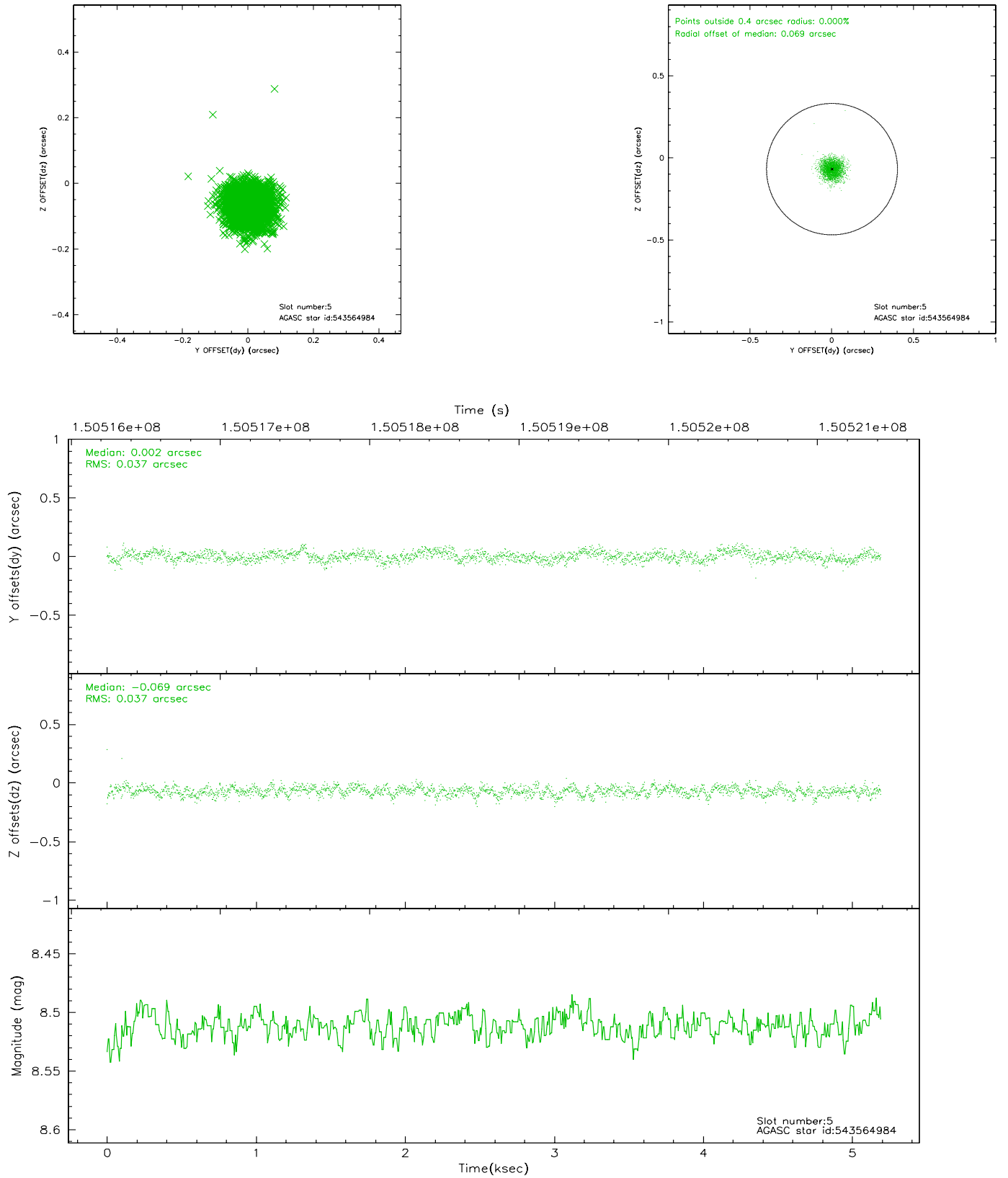
2.4.1 Slot 3



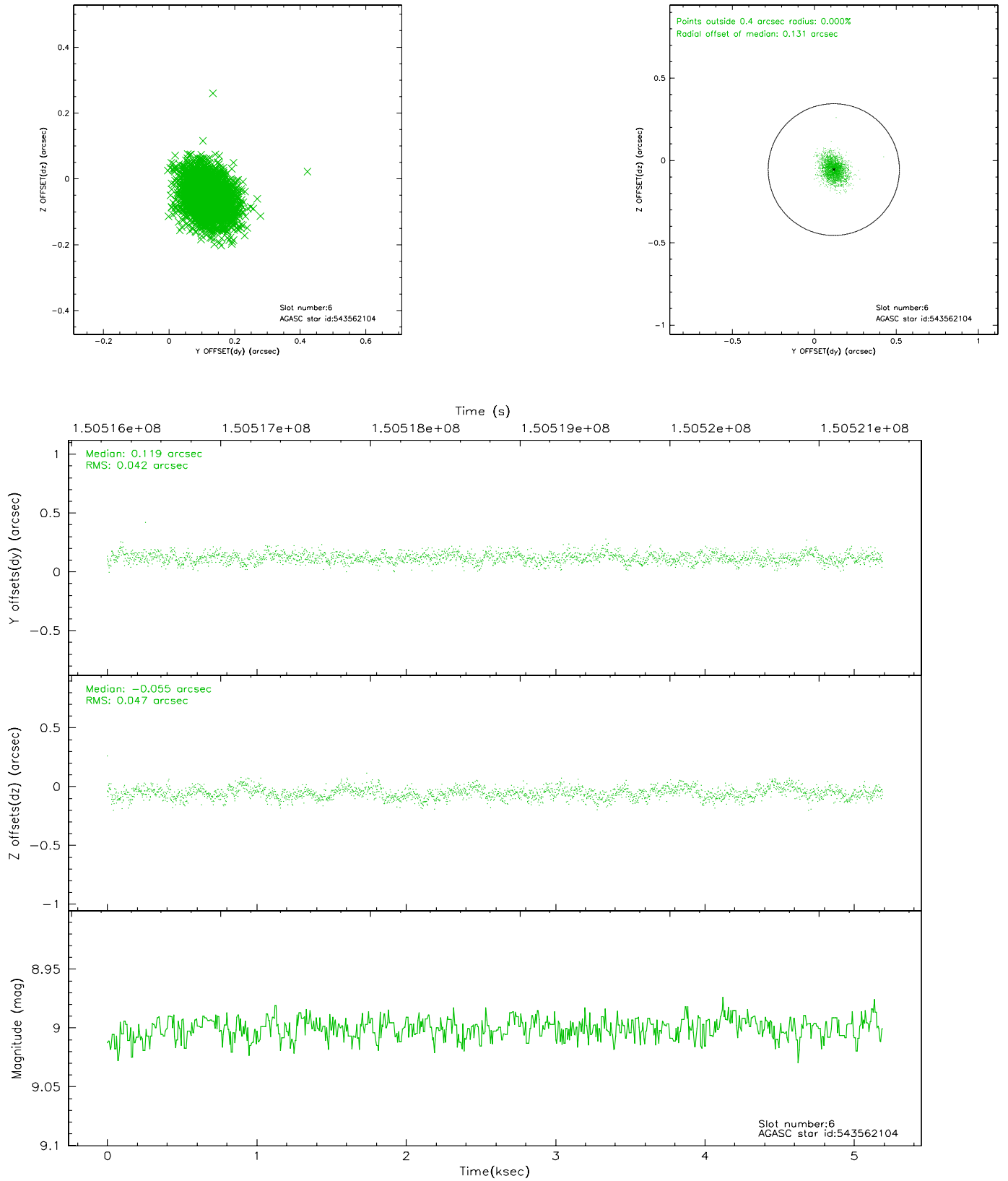
2.4.2 Slot 4



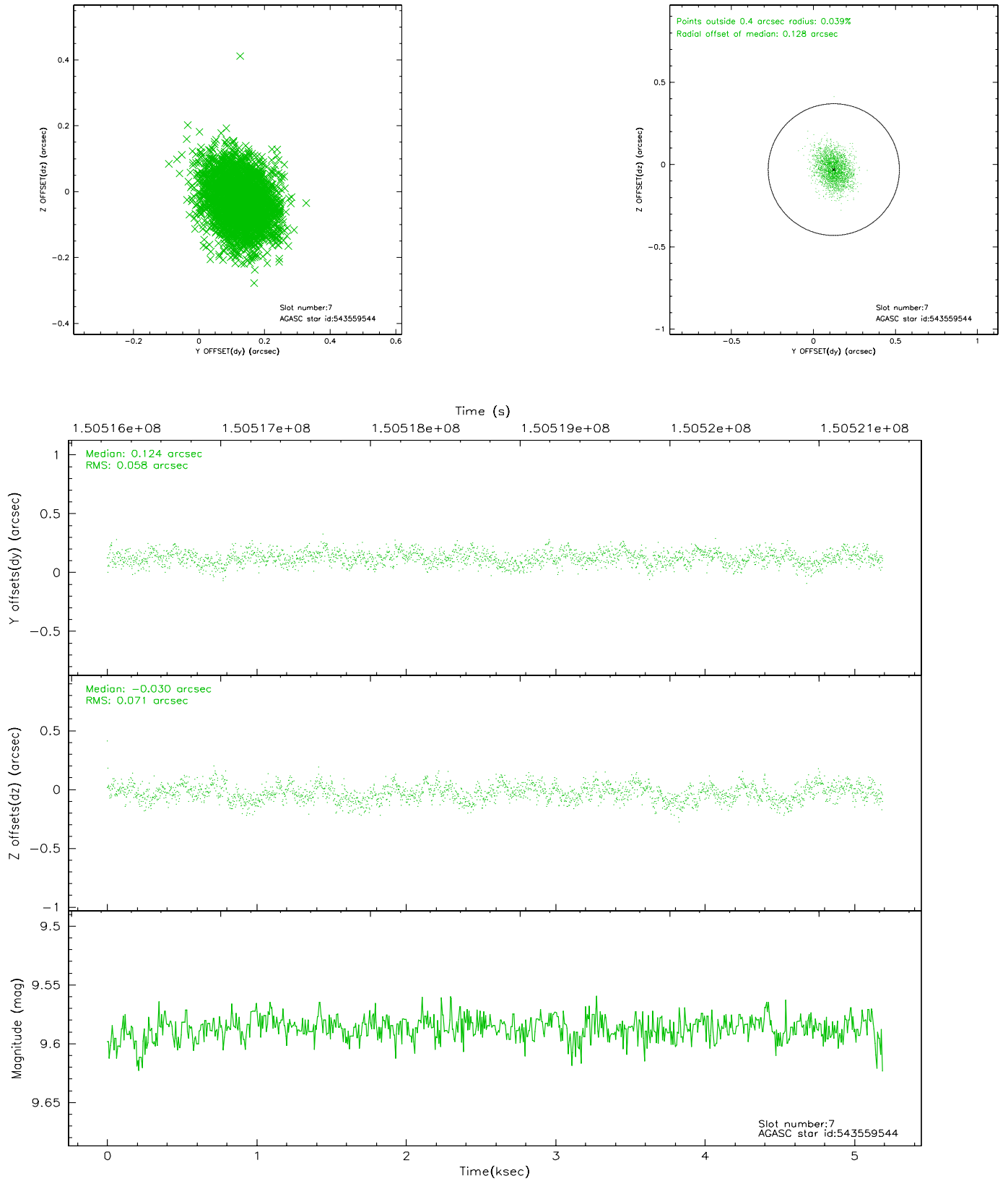
2.4.3 Slot 5



2.4.4 Slot 6

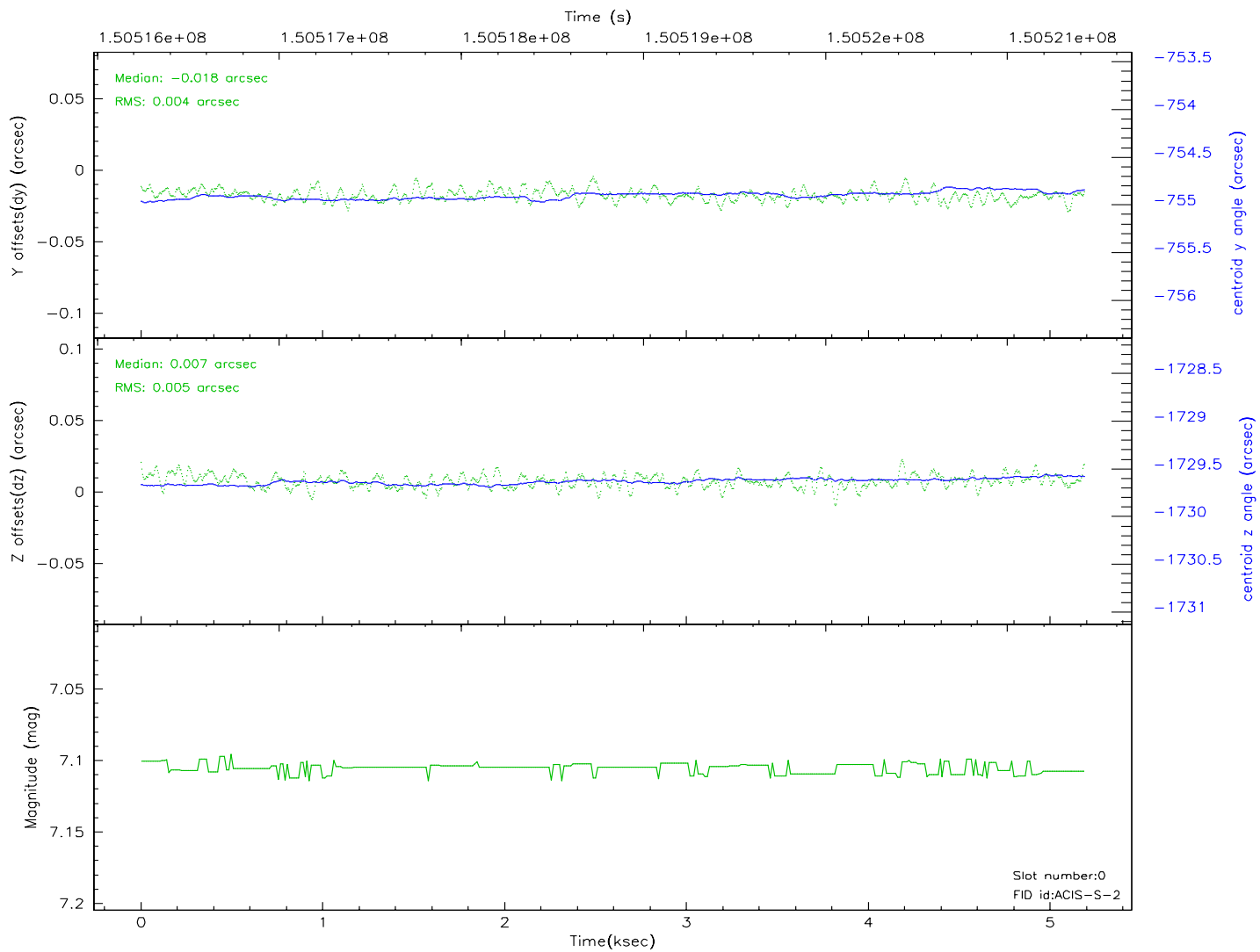
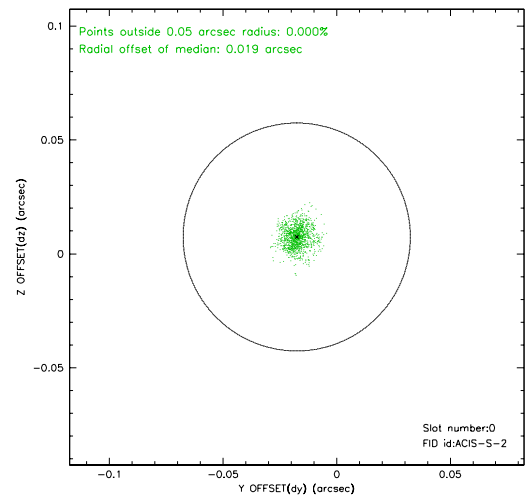
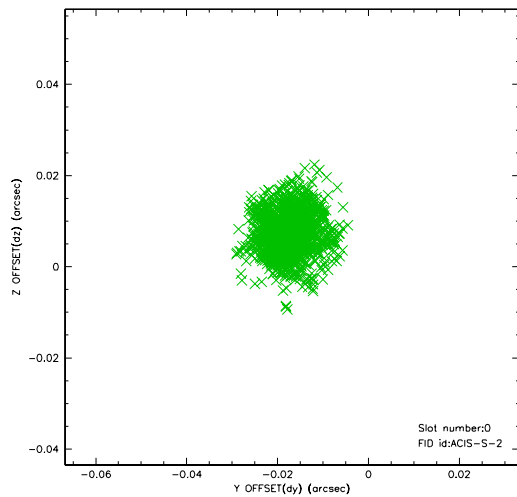


2.4.5 Slot 7

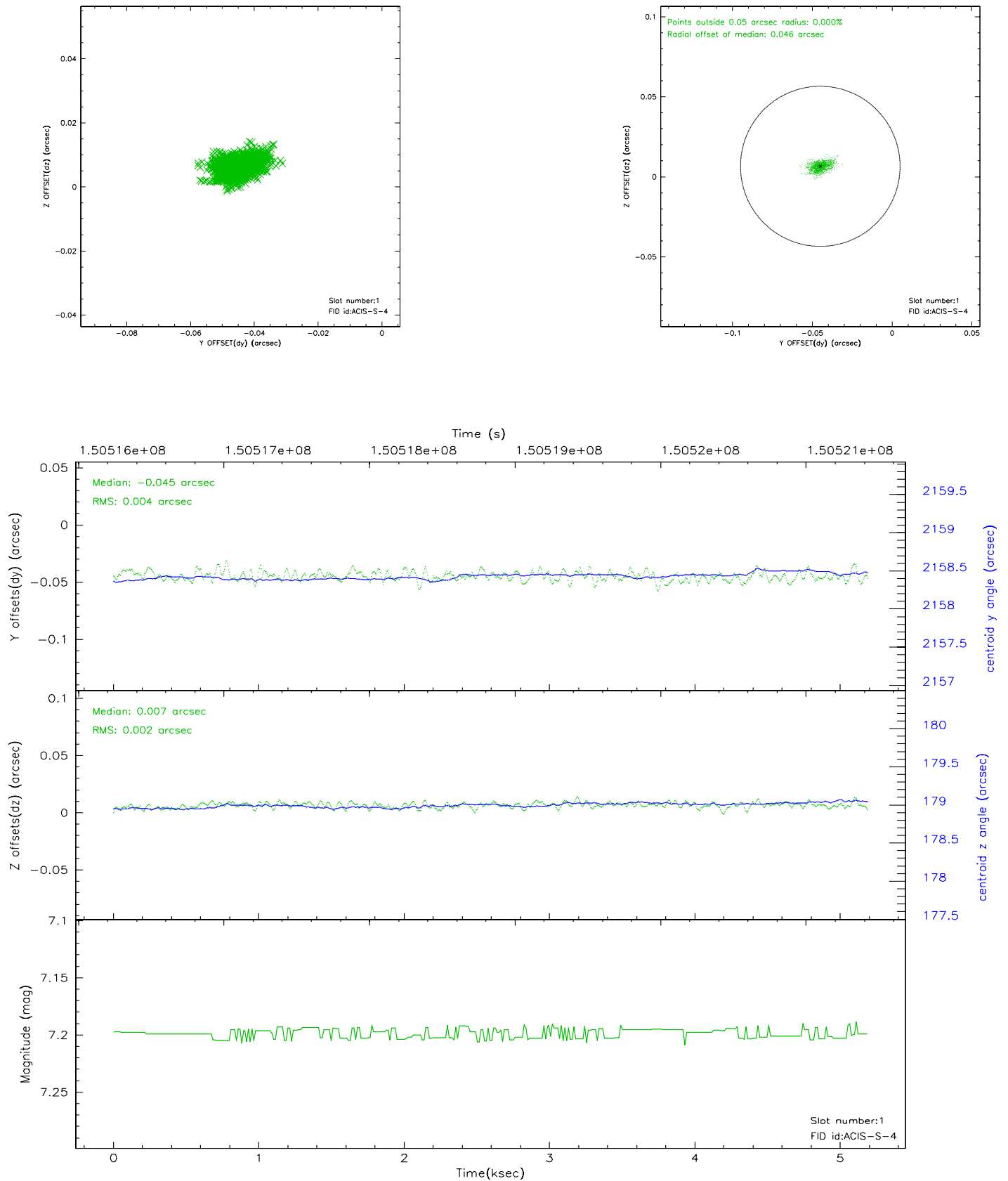


2.5 FID Slots

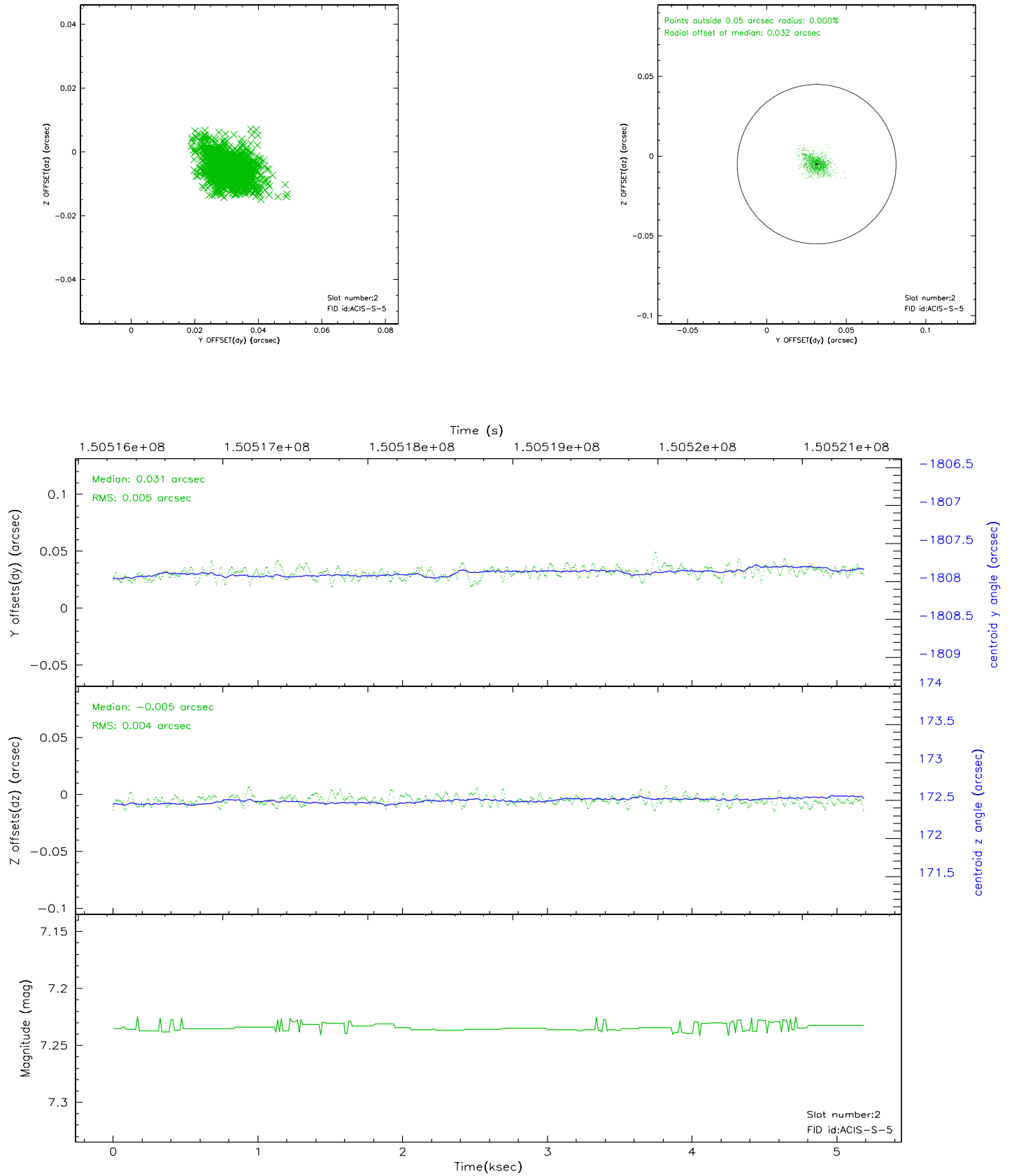
2.5.1 Slot 0



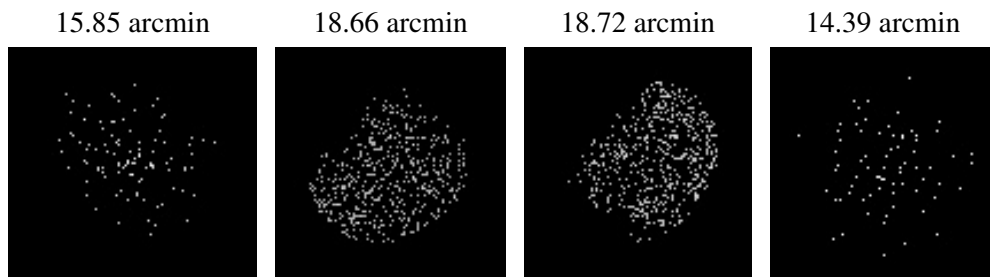
2.5.2 Slot 1



2.5.3 Slot 2



3 Point Sources



A Summary

A.1 Status

V&V Scientist	Beth Sundheim
V&V Date (YYYY-MM-DD)	2006.10.06
V&V Edition	1
V&V Disposition and Status	OK
V&V Charge Time	4.755

A.2 Comments