

V&V Reference Report

L2 ASCDS Version : 7.6.8.1

Observation 3036 - L2 Version 001
Chandra X-Ray Center

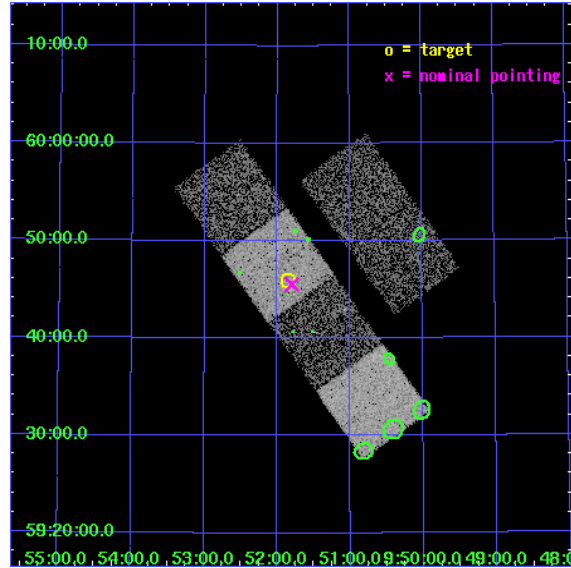
L2 Processing Date : Sep 11 2006

Contents

1	Front	2
2	OBI	3
2.1	OBI	3
2.1.1	Images	3
2.1.2	Bias	3
2.1.3	Parameters	4
2.1.4	Events	4
2.2	Compared Parameters	5
2.3	Aspect	6
2.4	Star Slots	9
2.4.1	Slot 3	9
2.4.2	Slot 4	10
2.4.3	Slot 5	11
2.4.4	Slot 6	12
2.4.5	Slot 7	13
2.5	FID Slots	14
2.5.1	Slot 0	14
2.5.2	Slot 1	15
2.5.3	Slot 2	16
3	Point Sources	17
A	Summary	18
A.1	Status	18
A.2	Comments	18

1 Front

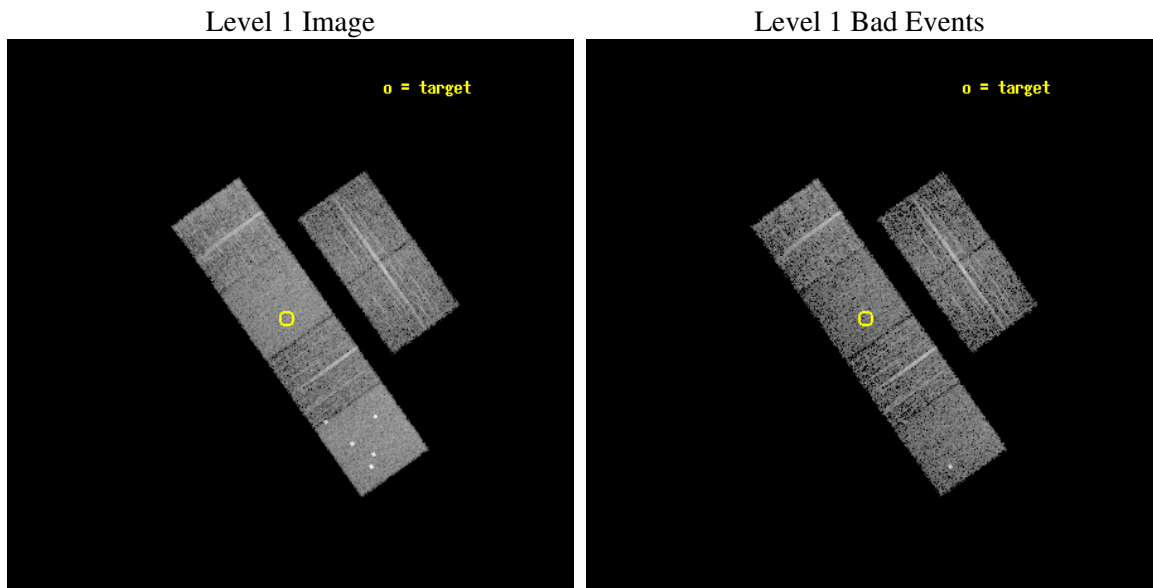
seq_num	700475
obs_id	3036
title	A CHANDRA AND XMM-NEWTON STUDY OF THE MOST DISTANT QUASARS: X-RAYING THE FIRST MASSIVE BLACK HOLES
observer	Prof. William Brandt
object	SDSS095151+594556
dtcycle	0
cycle	P
ra_targ	147.963333
dec_targ	59.765611
ra_nom	147.94976491428
dec_nom	59.758822423644
roll_nom	234.61113279311
revision	2
ontime	5190.3999806643
livetime	5124.6760108254
ontime2	5190.3999806643
ontime3	5190.3999806643
ontime5	5190.3999806643
ontime6	5190.3999806643
ontime7	5190.3999806643
ontime8	5190.3999806643
l2events	49077



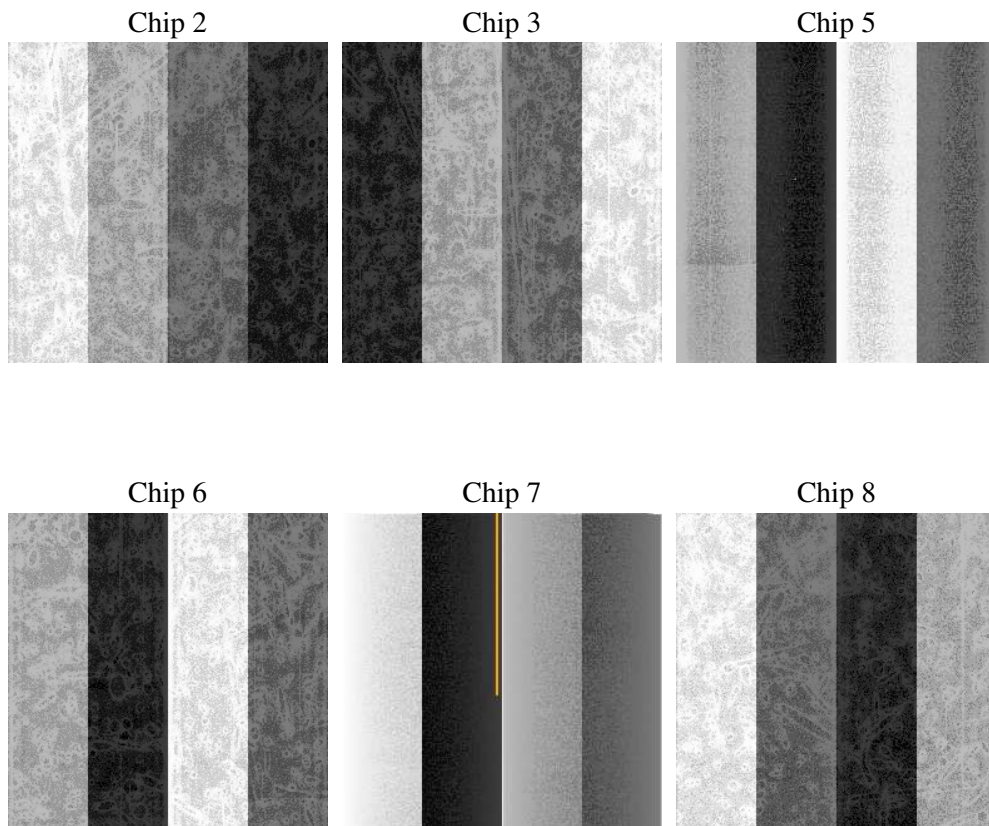
2 OBI

2.1 OBI

2.1.1 Images



2.1.2 Bias



2.1.3 Parameters

obi_num	2
ascdsver	7.6.8.1
caldbver	3.2.3
date	2006-09-11T05:53:51
revision	2

sched_exp_time	5000.000000
ontime	5409.2325101197
ontime2	5409.2325101197
ontime3	5409.2325101197
ontime5	5409.2325300276
ontime6	5409.2325101197
ontime7	5409.2325101197
ontime8	5409.2325101197
l1events	243089

2.1.4 Events

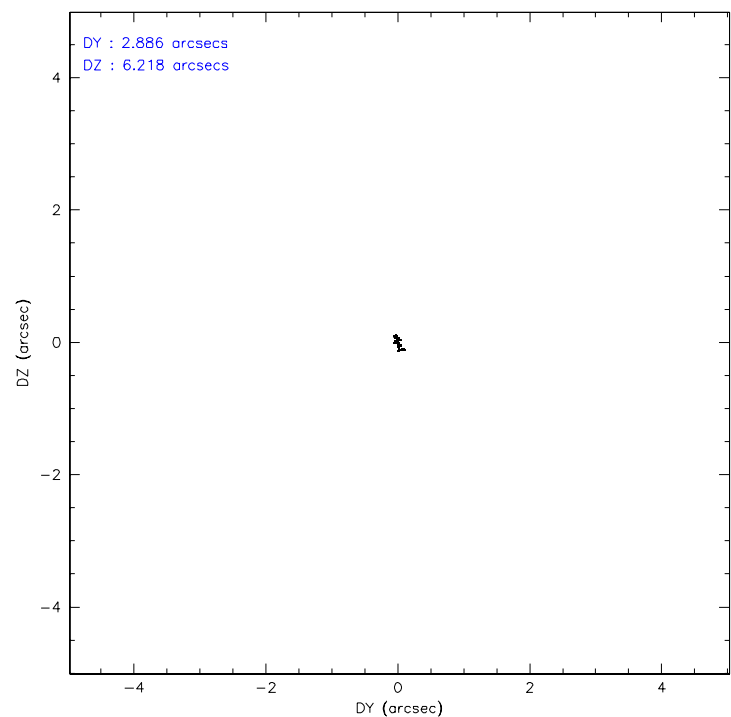
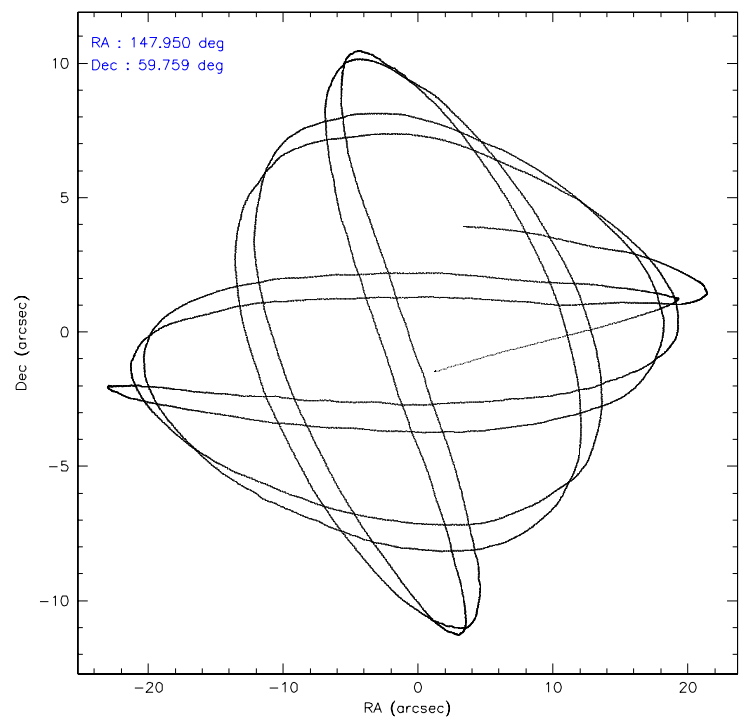
	ccd 2	ccd 3	ccd 5	ccd 6	ccd 7	ccd 8
level 1 events	34486	33511	52969	34586	44841	42696
rejected events	30757	29860	29285	30724	28421	34575
rejected %	89%	89%	55%	88%	63%	80%

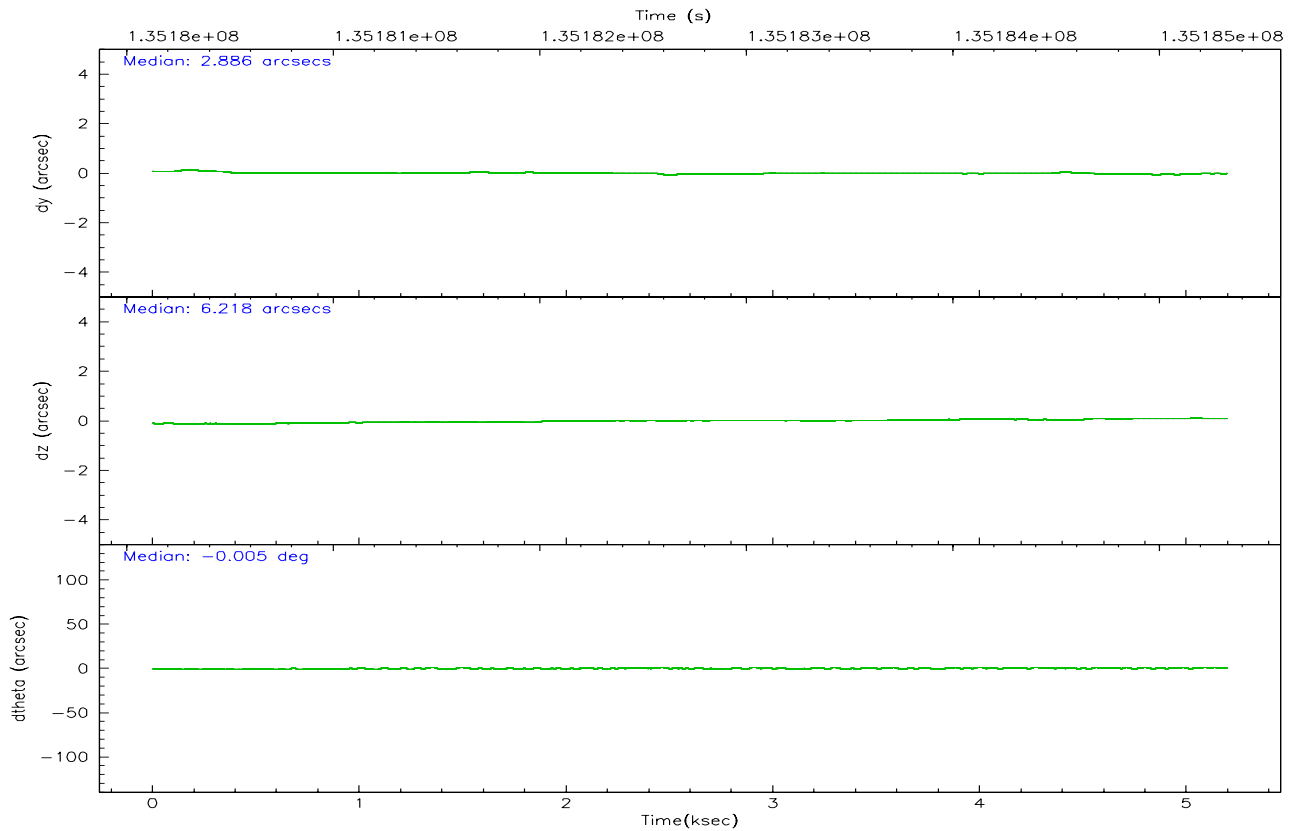
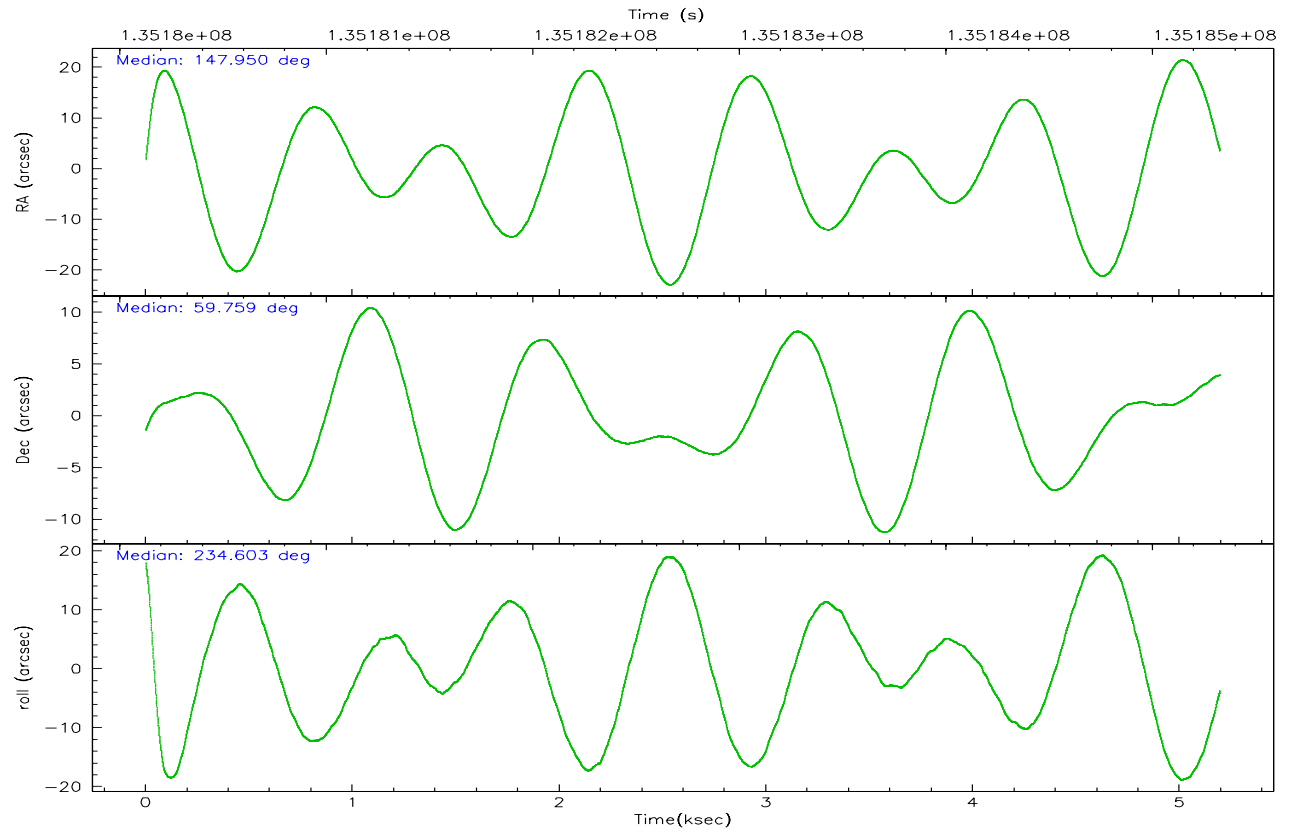
	ccd 2	ccd 3	ccd 5	ccd 6	ccd 7	ccd 8
grade 0 events	1657	1612	4217	1592	1081	2630
	4%	4%	7%	4%	2%	6%
grade 1 events	26	20	158	15	24	27
	0%	0%	0%	0%	0%	0%
grade 2 events	847	760	7123	813	4232	1845
	2%	2%	13%	2%	9%	4%
grade 3 events	348	368	481	381	847	894
	1%	1%	0%	1%	1%	2%
grade 4 events	339	378	473	399	844	790
	0%	1%	0%	1%	1%	1%
grade 5 events	1173	1459	2476	1412	2844	1897
	3%	4%	4%	4%	6%	4%
grade 6 events	704	695	12371	829	10085	2351
	2%	2%	23%	2%	22%	5%
grade 7 events	29392	28219	25670	29145	24884	32262
	85%	84%	48%	84%	55%	75%

2.2 Compared Parameters

Parameter	Planned	Actual	Parameter	Planned	Actual
Instrument	ACIS	ACIS	Obspar format version number	6	6
Detector	ACIS-235678	ACIS-235678	Obspar file type	PREDICTED	ACTUAL
Grating	NONE	NONE	Obspar update status	NONE	UPDATED
Data mode	FAINT	FAINT	On-chip summing requested	N	N
Observation mode	POINTING	POINTING	Subarray requested	NONE	NONE
Pointing RA	147.953995	147.9497649142805	Alternating exposures requested	N	N
Pointing Dec	59.785971	59.75882242364428	Primary exposure time	0.000000	3.2
Pointing Roll	234.450796	234.6111327931118			
SIM focus pos (mm)	-0.684267	-0.6828225247311905			
SIM defocus (mm)	0	0.001444936568705701			
SIM translation stage pos (mm)	-190.132523	-190.1425803651734			
SIM translation stage offset (mm)	0	0.01005778216563158			
Observation start time	135180326.184000	135179143.02337			
Observation start date	2002-04-14T14:04:22	2002-04-14T13:45:43			
Observation end time	135185326.184000	135185460.09863			
Observation end date	2002-04-14T15:27:42	2002-04-14T15:31:00			
Read mode	TIMED	TIMED			

2.3 Aspect



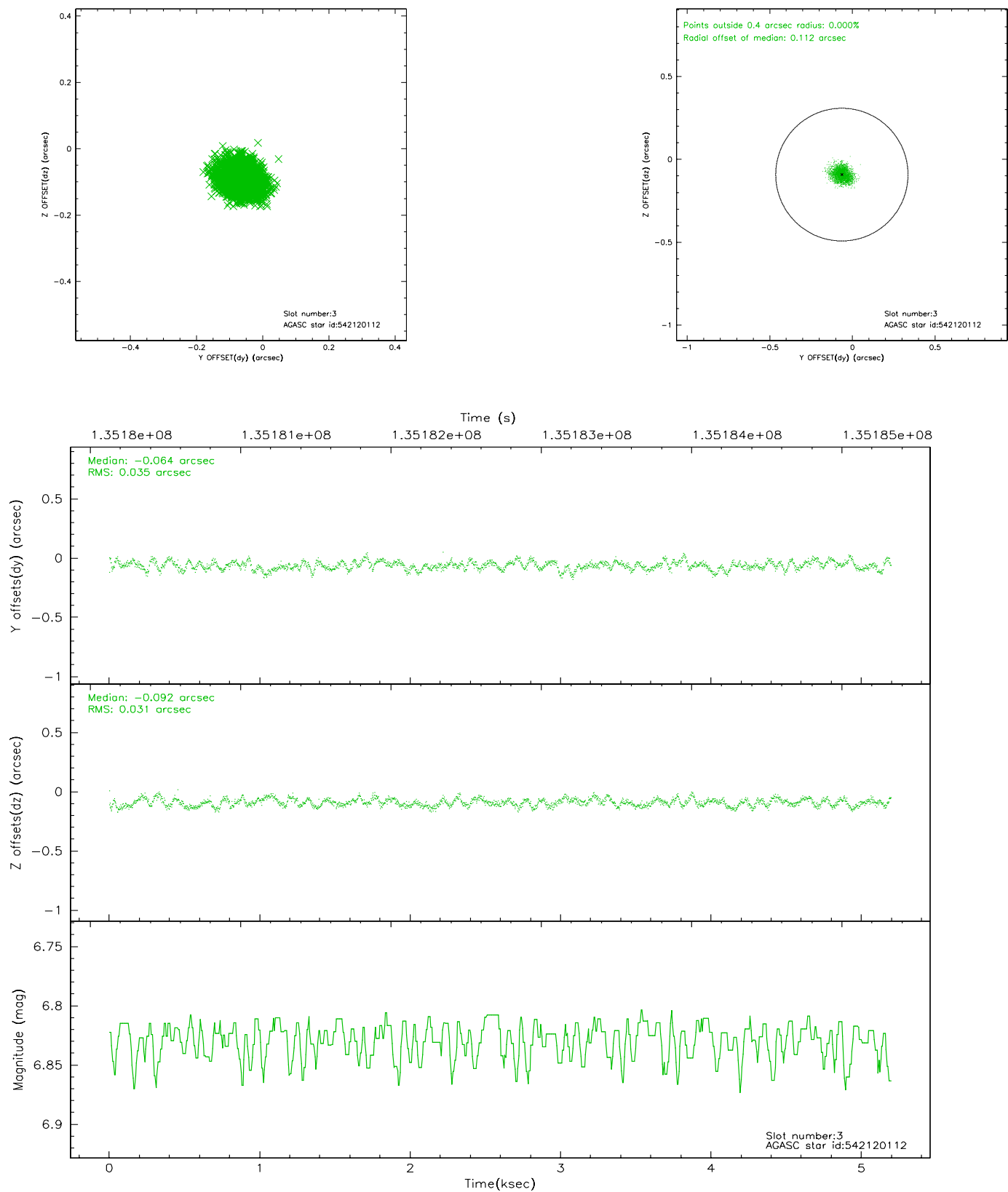


Slot Statistics

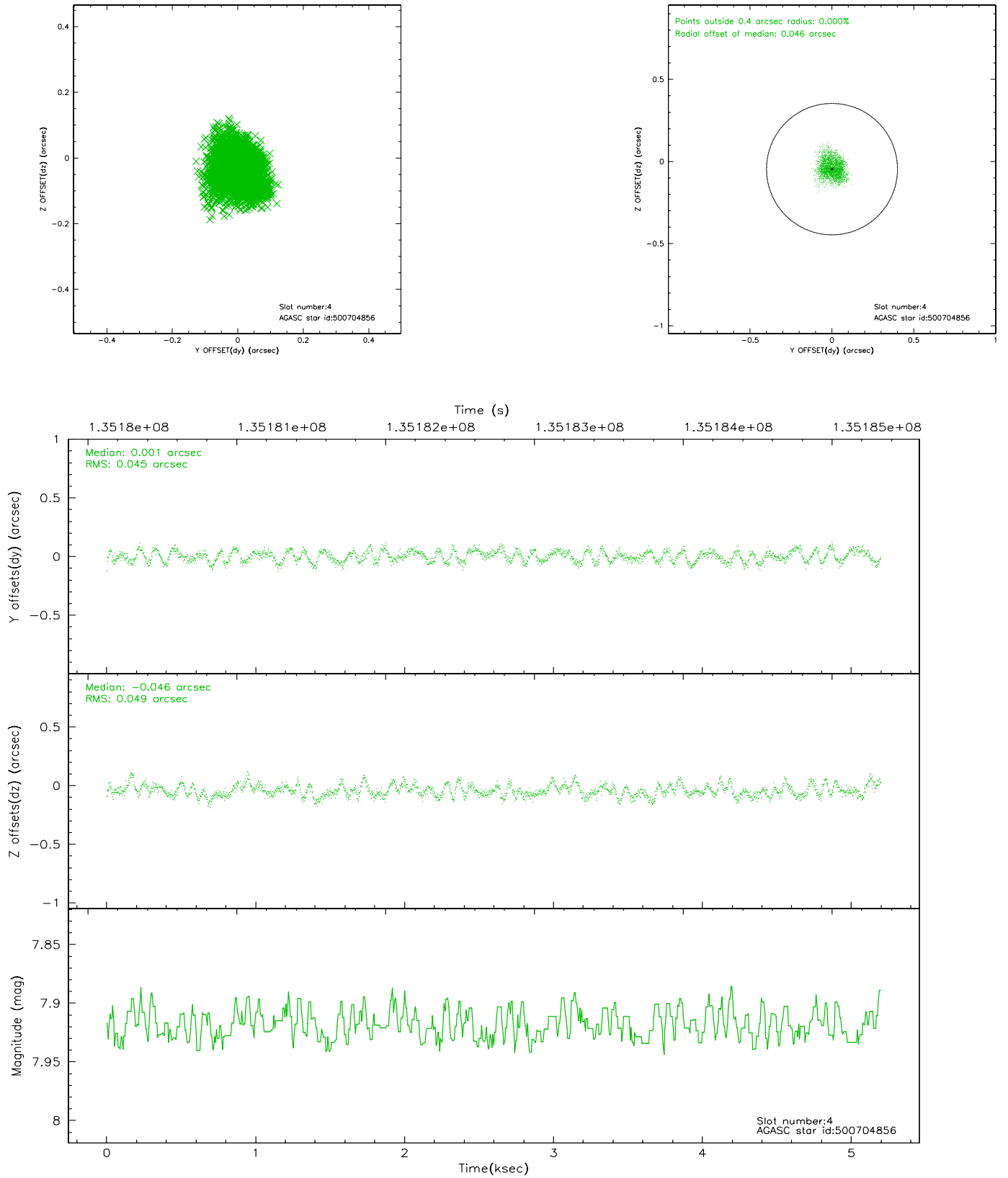
slot	status	id	mag	n_pts	med_dy	med_dz	dr1	dr2	ra	dec	mean_y	mean_z
0	FID	ACIS-S-2	7.12	1268	-0.024	0.034	0.006	0.010	0.000000	0.000000	-755.51	-1727.29
1	FID	ACIS-S-4	7.20	1268	-0.057	0.002	0.005	0.008	0.000000	0.000000	2157.17	180.03
2	FID	ACIS-S-5	7.24	1268	0.050	-0.028	0.006	0.010	0.000000	0.000000	-1806.82	174.91
3	GUIDE	542120112	6.83	2535	-0.064	-0.092	0.050	0.078	147.208497	60.096902	-138.03	-1744.37
4	GUIDE	500704856	7.92	2533	0.001	-0.046	0.071	0.111	149.095120	59.439271	-213.28	2413.39
5	GUIDE	542123488	9.02	2536	-0.069	-0.047	0.087	0.144	147.472275	60.346240	-1144.04	-1872.31
6	GUIDE	500702768	9.35	2533	0.114	0.072	0.086	0.137	146.907534	59.524990	1863.34	-1017.85
7	GUIDE	500699664	9.51	2535	0.014	0.111	0.078	0.128	148.622209	59.767149	-652.86	1020.50

2.4 Star Slots

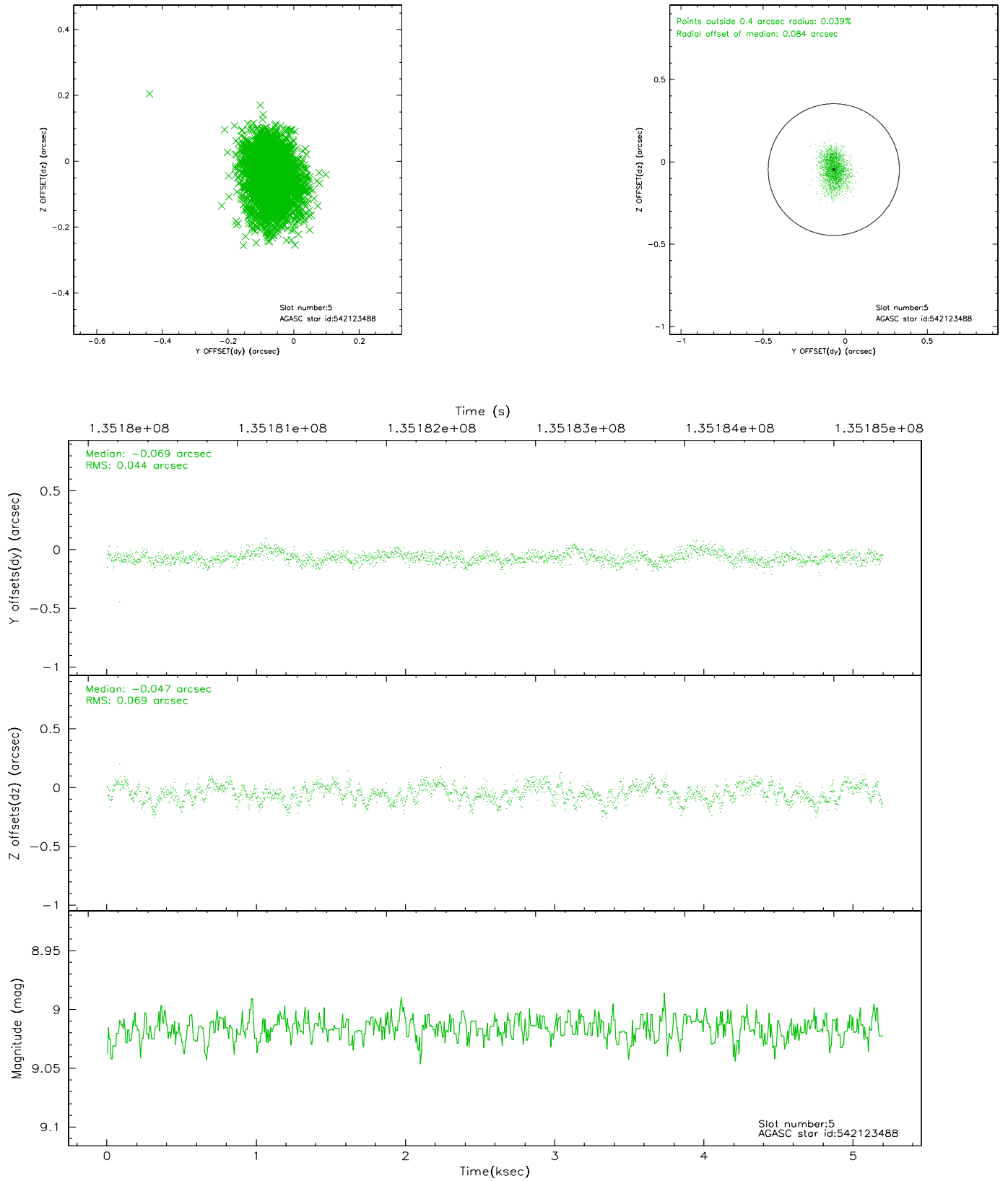
2.4.1 Slot 3



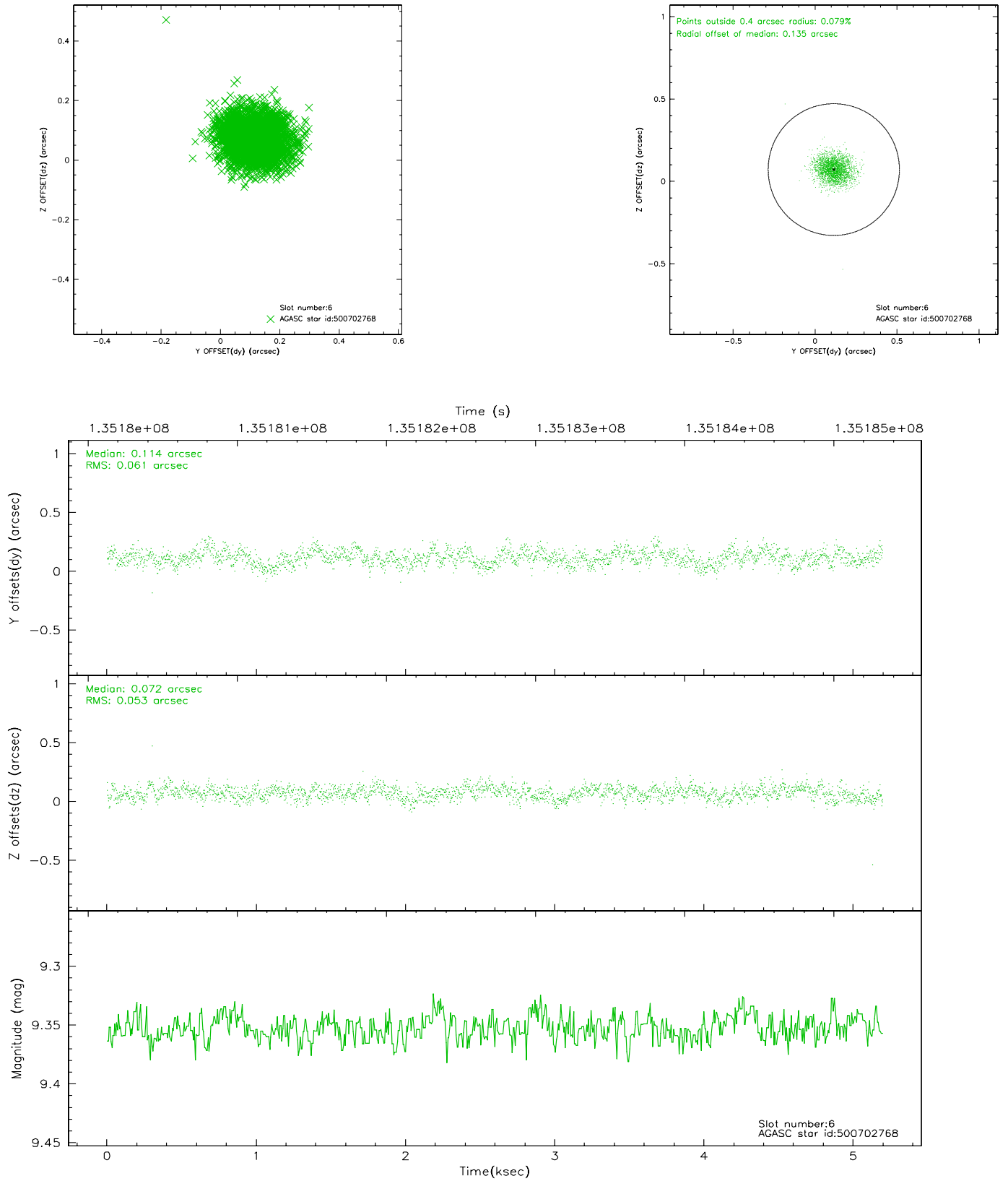
2.4.2 Slot 4



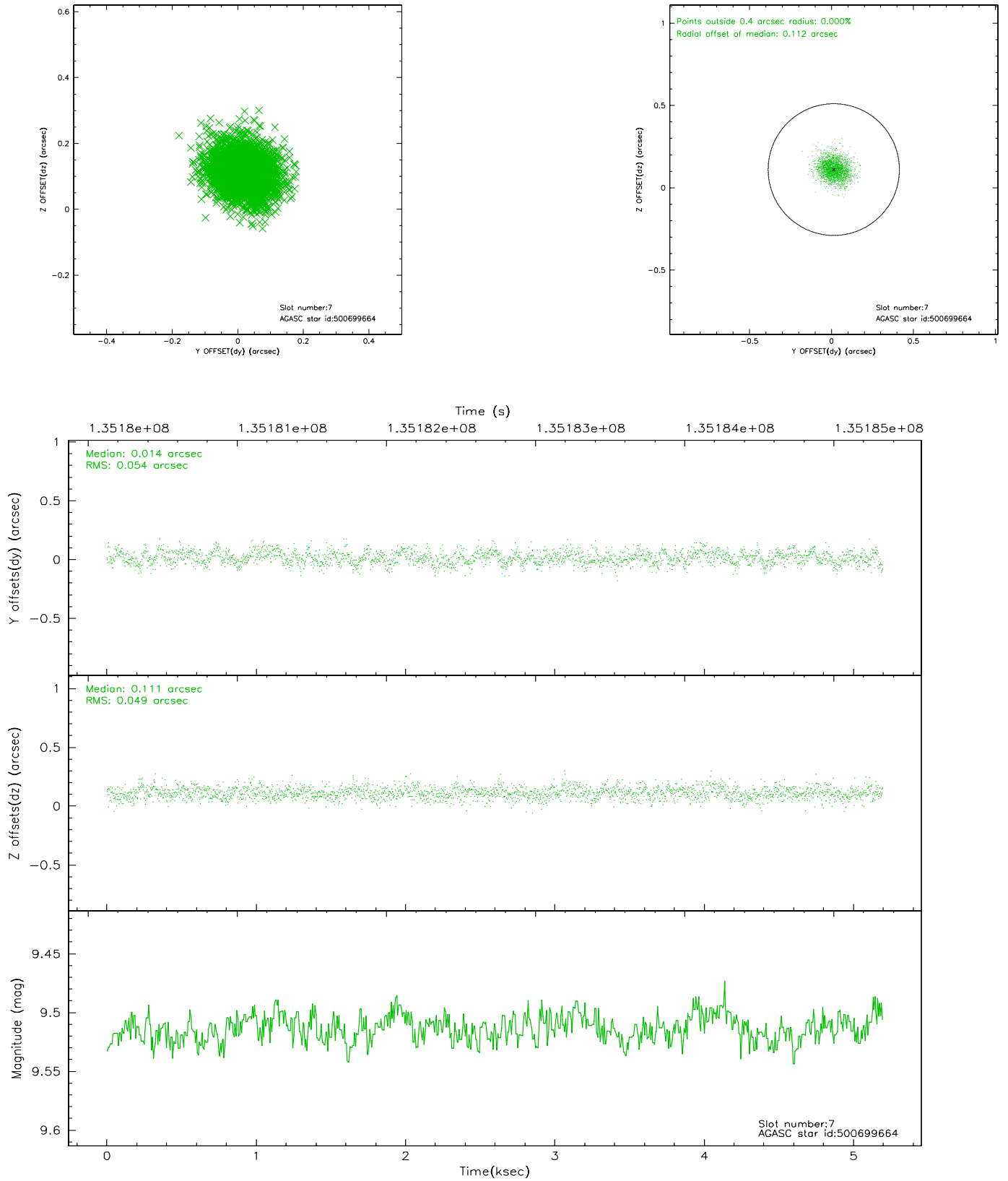
2.4.3 Slot 5



2.4.4 Slot 6

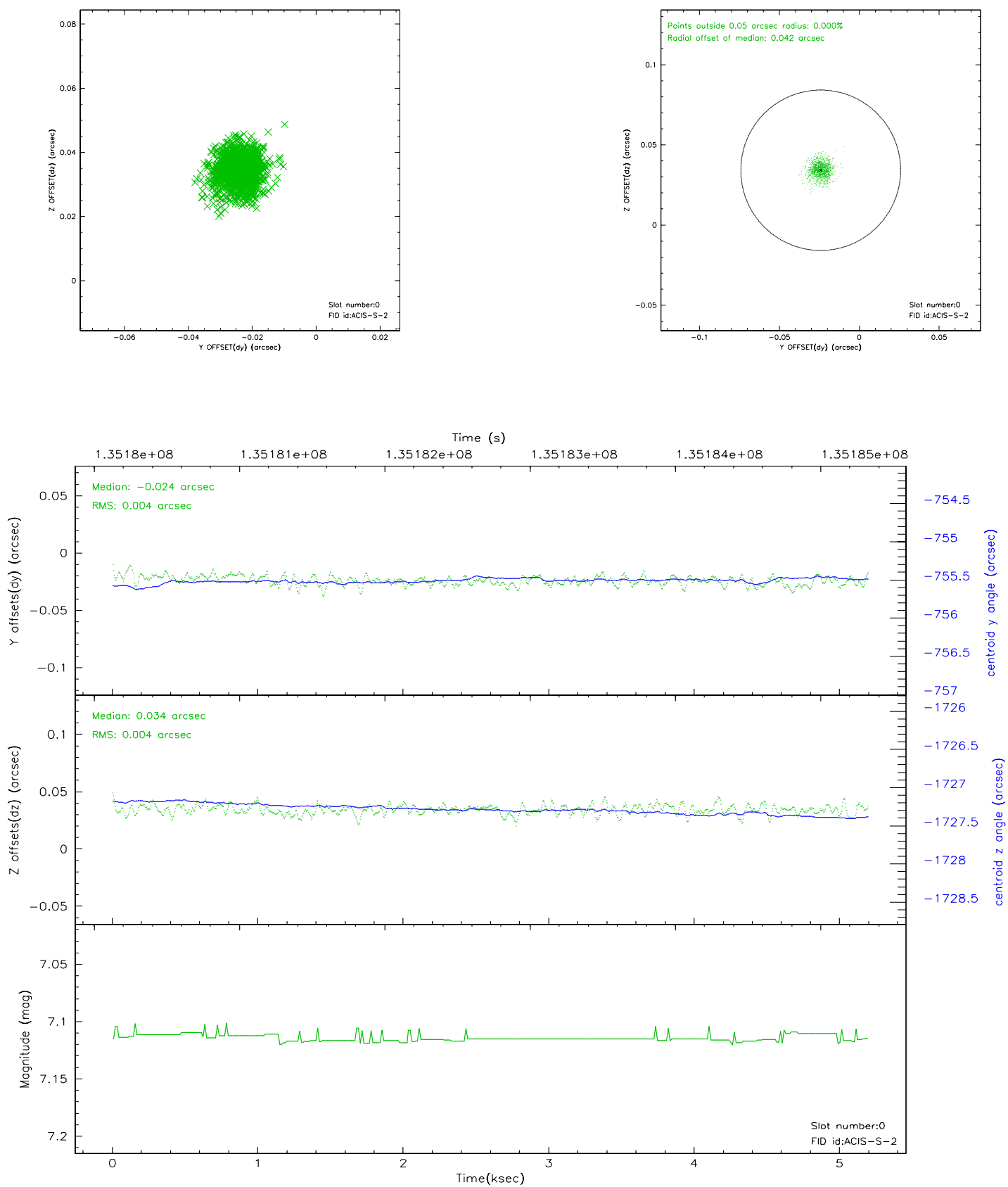


2.4.5 Slot 7

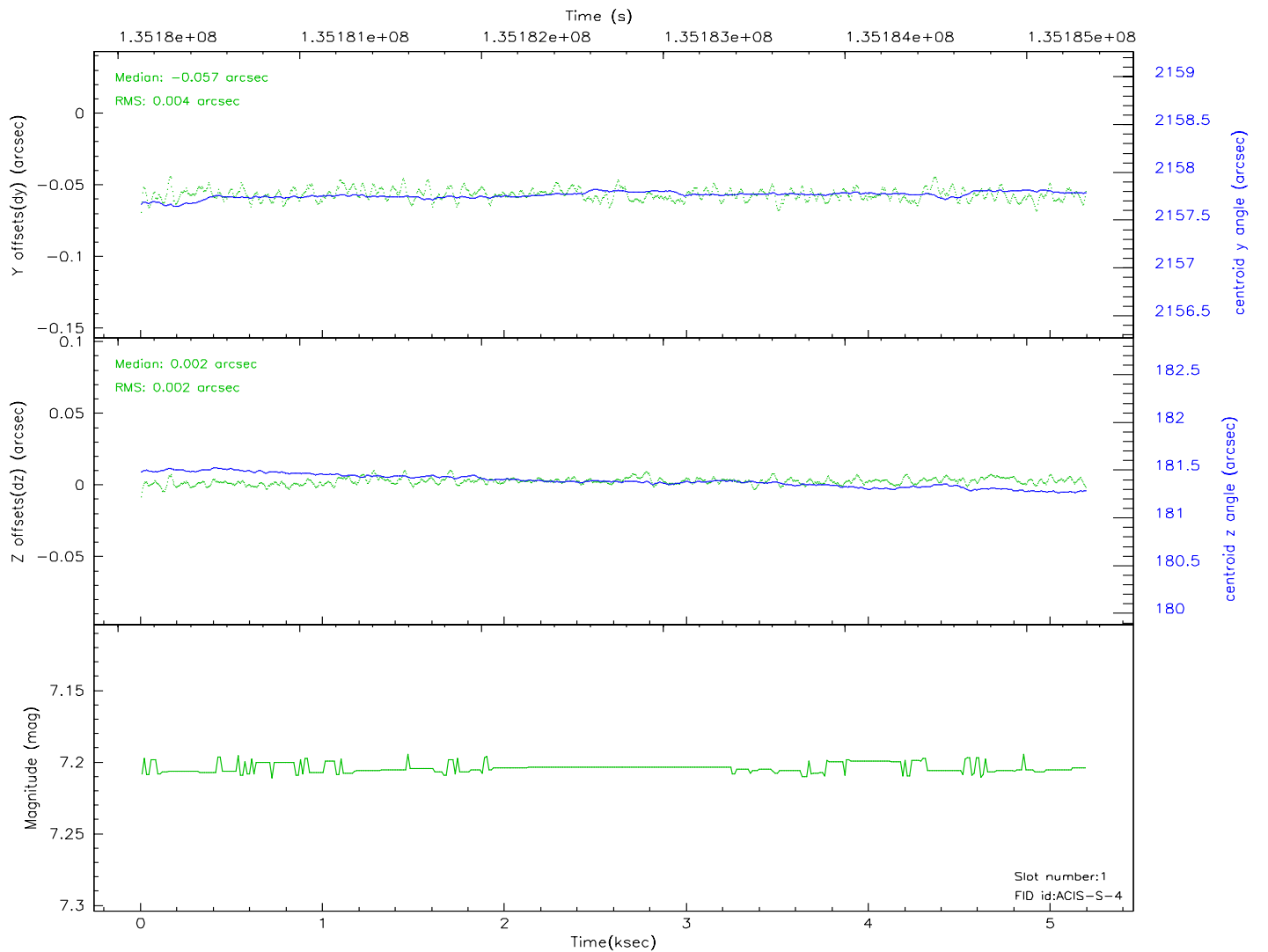
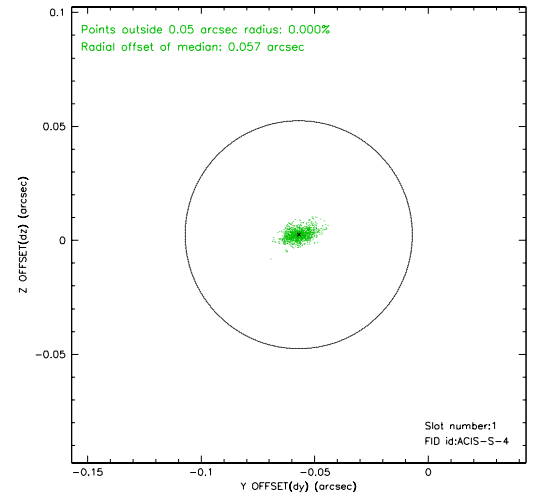
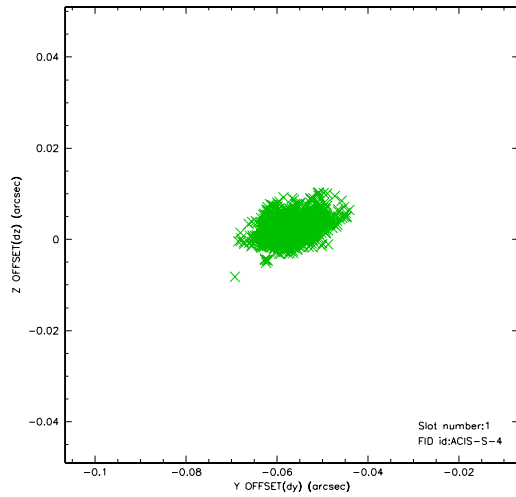


2.5 FID Slots

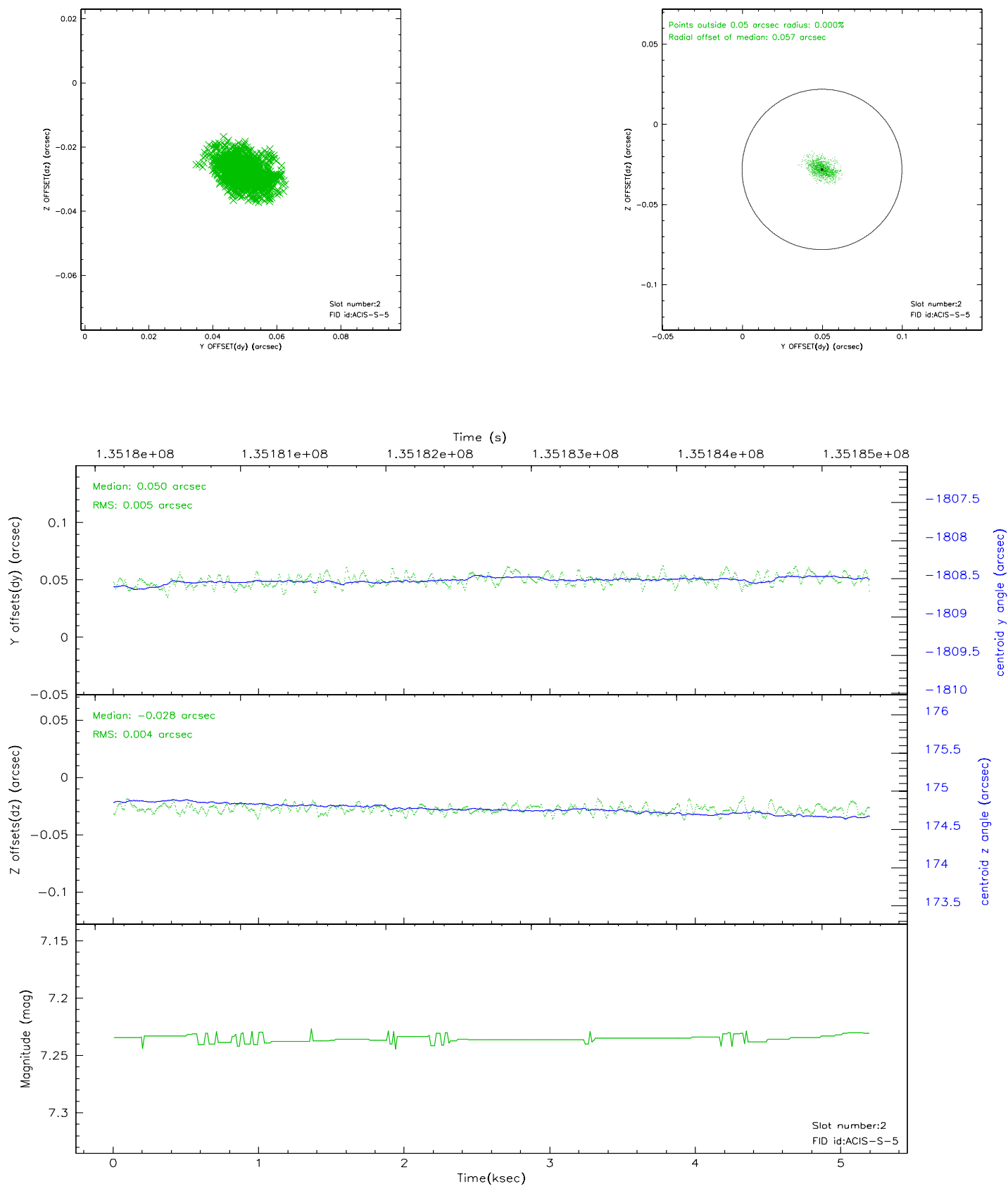
2.5.1 Slot 0



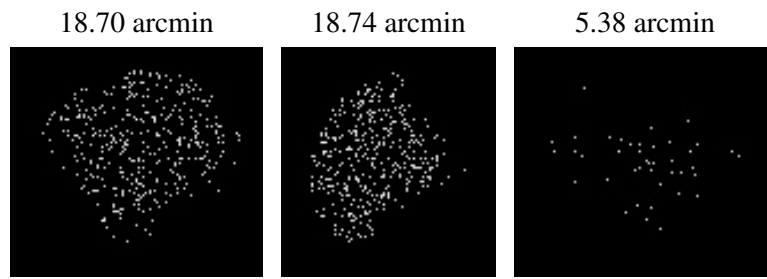
2.5.2 Slot 1



2.5.3 Slot 2



3 Point Sources



A Summary

A.1 Status

V&V Scientist	Jen Lauer
V&V Date (YYYY-MM-DD)	2006.09.11
V&V Edition	1
V&V Disposition and Status	OK
V&V Charge Time	5.19

A.2 Comments